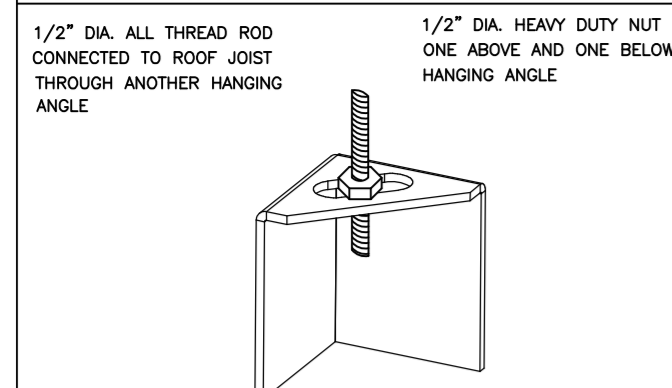


ND-2 HANGING ANGLE DETAIL



* ROD AND NUTS TO BE SUPPLIED BY INSTALLING CONTRACTOR
HANGING ANGLE IS PRE-FINISHED AT FACTORY

HANGING ANGLE LOCATIONS

HOOD STYLE	DIM FROM REAR	DIM FROM FRONT (24\"/>	
CANOPY ND2	4.166"	2.246"	2.246"
ND2-PSP-F	4.166"	2.246"	2.246"
BACKSHELF BD-2	4.166"	2.246"	-
VHB/VHB-G	36"x36"	42"x42"	48"x48"
FRONT/BACK DIMS BY SIZE	2.246"	2.246"	2.246"

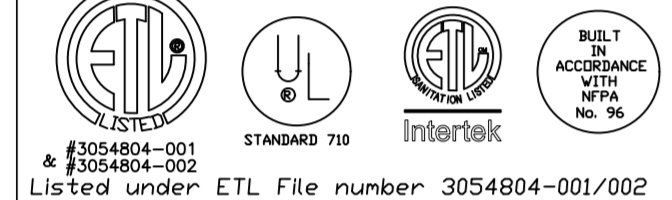
CALCULATIONS UTILIZED

EXHAUST CFM=LENGTH OF HOOD X CFM/LIN.FT. (LOAD)
SUPPLY CFM=EXHAUST CFM X PERCENTAGE REQUIRED
TOTAL DUCT AREA=144 X $\frac{CFM}{FPM}$
DUCT LENGTH= $\frac{TOTAL DUCT AREA}{DUCT DEPTH}$

* CAPTIVE-AIRE DUCT CONNECTION SIZES ARE CALCULATED USING AN EXHAUST VELOCITY OF 1500-1800 FPM AND A SUPPLY VELOCITY OF 300-400 FPM

BUILDING CODES

CAPTIVE-AIRE HOODS ARE BUILT IN COMPLIANCE WITH:



CLEARANCE TO COMBUSTIBLES

CAPTIVE-AIRE HOODS HAVE OPTIONAL CLEARANCE REDUCTION SYSTEMS AVAILABLE AS FOLLOWS:

MATERIAL	CLEARANCE REDUCTION SYSTEM
NON-COMBUSTIBLE	NONE REQUIRED
LIMITED-COMBUSTIBLE	3" UNINSULATED STANDOFF
COMBUSTIBLE	1" INSULATED STANDOFF

GENERAL NOTES

INSTALLATION

- ALL ELECTRICAL "FIELD" CONNECTIONS AND RELATED INTERCONNECTIONS BY ELECTRICAL CONTRACTORS.
- ALL PLUMBING "FIELD" CONNECTIONS AND RELATED INTERCONNECTIONS BY PLUMBING CONTRACTORS.
- HANGING BRACKETS LOCATED AND WELDED AS SHOWN ON PLANS. ALL OTHER HANGER MATERIALS PROVIDED BY INSTALLING CONTRACTORS.
- ALL CONNECTIONS FROM CAPTIVE-AIRE DUCT PER MECHANICAL CONTRACTORS' PLANS.
- COOKING EQUIPMENT TO SHUTOFF IN EVENT OF FIRE.
- EXHAUST FANS TO TURN ON IN EVENT OF FIRE.
- ALL LIGHTS FIXTURE SHOWN INSTALLED BY CAPTIVE-AIRE ARE FACTORY PREWIRED. INTERCONNECTIONS BETWEEN HOODS AND TO SWITCHES BY ELECTRICAL CONTRACTORS.
- LAMPS FOR LIGHT FIXTURES BY INSTALLING CONTRACTORS.
- SEISMIC RESTRAINTS ARE RESPONSIBILITY OF INSTALLING CONTRACTOR.
- INSTALLING CONTRACTORS ASSUME ALL RELATED RESPONSIBILITY FOR VERIFICATION OF DIMENSIONAL DATA CONTAINED ON THESE PLANS FOR ACCURACY, INTEGRATION, AND ADMINISTRATION OF CODE REQUIREMENTS IN EFFECT PRIOR TO ANY RELEASE FOR PRODUCTION OF EQUIPMENT SHOWN.

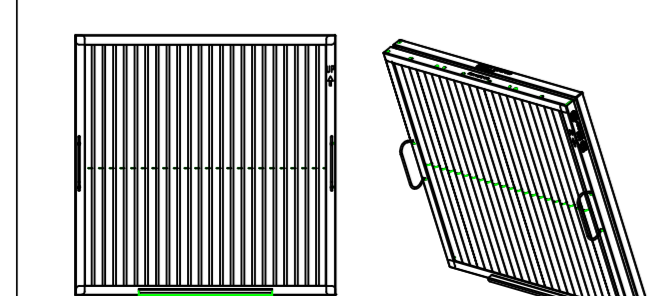
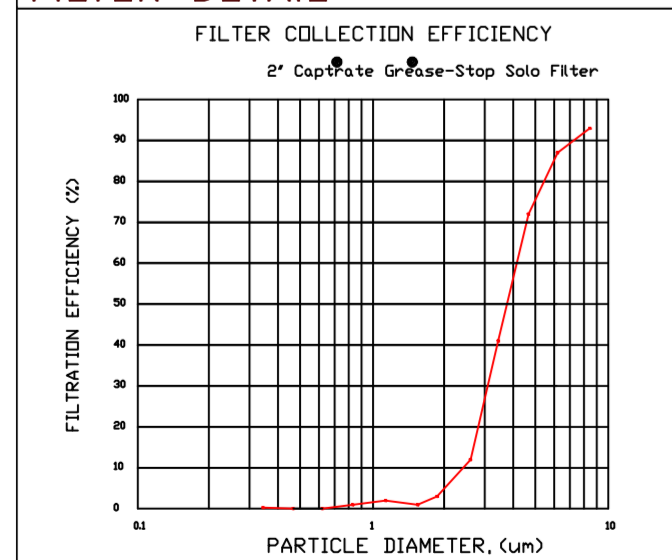
BALANCE

- KITCHEN HOODS MUST BE BALANCED WITH KITCHEN.
- KITCHEN SHALL BE NEGATIVE WITH RESPECT TO DINING AREA.
- RESTAURANT SHALL BE POSITIVE WITH RESPECT TO AMBIENT PRESSURE.

ADDITIONAL

- WRITTEN HOOD DIMENSIONS HAVE PRECEDENCE OVER SCALE.
- SIGNED AND "APPROVED" COPIES OF THIS DOCUMENT MUST BE RECEIVED BY THE FACTORY PRIOR TO COMMENCEMENT OF FABRICATION.

FILTER DETAIL



CaptiveAire Captrate Solo Filter
ETL Listed Grease Extracting Filter
Made From 430 Stainless Steel

HOOD INFORMATION - JOB#5537974

HOOD NO	TAG	MODEL	MANUFACTURER	LENGTH	MAX COOKING TEMP	TYPE	APPLIANCE DUTY	DESIGN CFM/FT	TOTAL EXH CFM	EXHAUST FLENUM (RISERS)	HOOD CONSTRUCTION	HOOD CONFIG
											END TO END	ROW
1	ITEM 33A	5424 ND-2	CAPTIVEAIRE	8' 0"	450 DEG	I	MEDIUM	200	1600	4" DIA 14" LENS 1600 1497 -0.734"	430 SS WHERE EXPOSED	ALDNE FRONT
2	ITEM 33B	5424 ND-2	CAPTIVEAIRE	5' 0"	450 DEG	I	MEDIUM	155	775	4" DIA 10" LENS 1421 -0.436"	430 SS WHERE EXPOSED	ALDNE ALDNE
3	ITEM 75	4224 VHB-G	CAPTIVEAIRE	3' 6"	700 DEG	II	N/A	150	525	4" DIA 10" LENS 963 -0.069"	304 SS 100%	ALDNE ALDNE

HOOD INFORMATION

HOOD NO	TAG	TYPE	QTY	HEIGHT	LENGTH	EFFICIENCY @ 7 MICRONS	QTY	TYPE	WIRE GUARD	LOCATION	SIZE	UTILITY CABINETS(S)			FIRE SYSTEM	HOOD HANGING WEIGHT	
												TYPE	SIZE	ELECTRICAL			
1	ITEM 33A	CAPTRATE SOLID FILTER	5	16"	16"	95% SEE FILTER SPEC	2	RECESSED ROUND	NO	LEFT	12"x54"x24"			DCV-2011	1 LIGHT 1 FAN	NO	521 LBS
2	ITEM 33B	CAPTRATE SOLID FILTER	3	16"	16"	95% SEE FILTER SPEC	2	RECESSED ROUND	NO							NO	308 LBS
3	ITEM 75						0									NO	161 LBS

HOOD OPTIONS

HOOD NO	TAG	OPTION
1	ITEM 33A	FIELD WRAPPER 18.00" HIGH FRONT, LEFT, RIGHT, BACK. LEFT QUARTER END PANEL 23" TOP WIDTH, 0" BOTTOM WIDTH, 23" HIGH 430 SS. RIGHT QUARTER END PANEL 23" TOP WIDTH, 0" BOTTOM WIDTH, 23" HIGH 430 SS. FINISHED BACK - GROUND/POLISH 96.00" LONG.
2	ITEM 33B	FIELD WRAPPER 18.00" HIGH FRONT, LEFT, RIGHT. RIGHT END PANEL 27" TOP WIDTH, 24" BOTTOM WIDTH, 39.5" HIGH 430 SS. LEFT QUARTER END PANEL 23" TOP WIDTH, 0" BOTTOM WIDTH, 23" HIGH 430 SS.
3	ITEM 75	FIELD WRAPPER 18.00" HIGH FRONT, LEFT, RIGHT.

SPECIFICATION: CAPTRATE® GREASE-STOP® SOLID FILTER

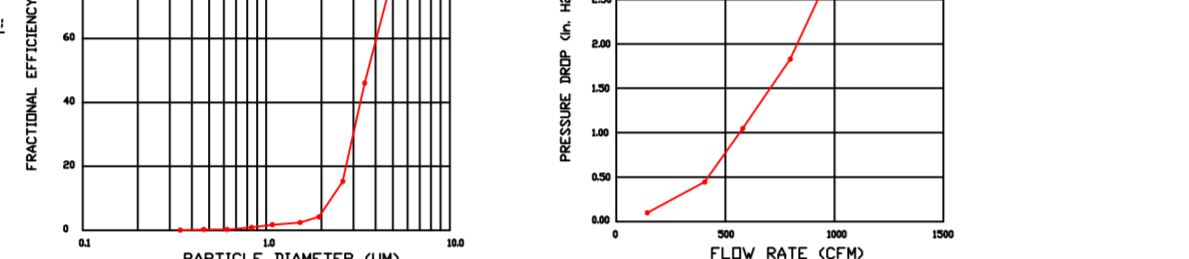
THE CAPTRATE GREASE-STOP SOLID FILTER IS A SINGLE-STAGE FILTER FEATURING A UNIQUE S-Baffle DESIGN IN CONJUNCTION WITH A SLOTTED REAR Baffle DESIGN, TO DELIVER EXCEPTIONAL FILTRATION EFFICIENCY.

FILTER IS STAINLESS STEEL CONSTRUCTION, AND SIZED TO FIT INTO STANDARD 2-INCH DEEP HOOD CHANNEL(S).

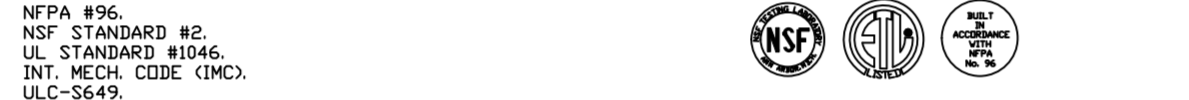
UNITS SHALL INCLUDE STAINLESS STEEL HANDLES AND A FASTENING DEVICE TO SECURE THE TWO COMPONENTS WHEN ASSEMBLED.

GREASE EXTRACTION EFFICIENCY PERFORMANCE SHALL REMOVE AT LEAST 75% OF GREASE PARTICLES FIVE MICRONS IN SIZE, AND 95% GREASE PARTICLES SEVEN MICRONS IN SIZE AND LARGER, WITH A CORRESPONDING PRESSURE DROP NOT TO EXCEED 10 INCHES OF WATER GAUGE.

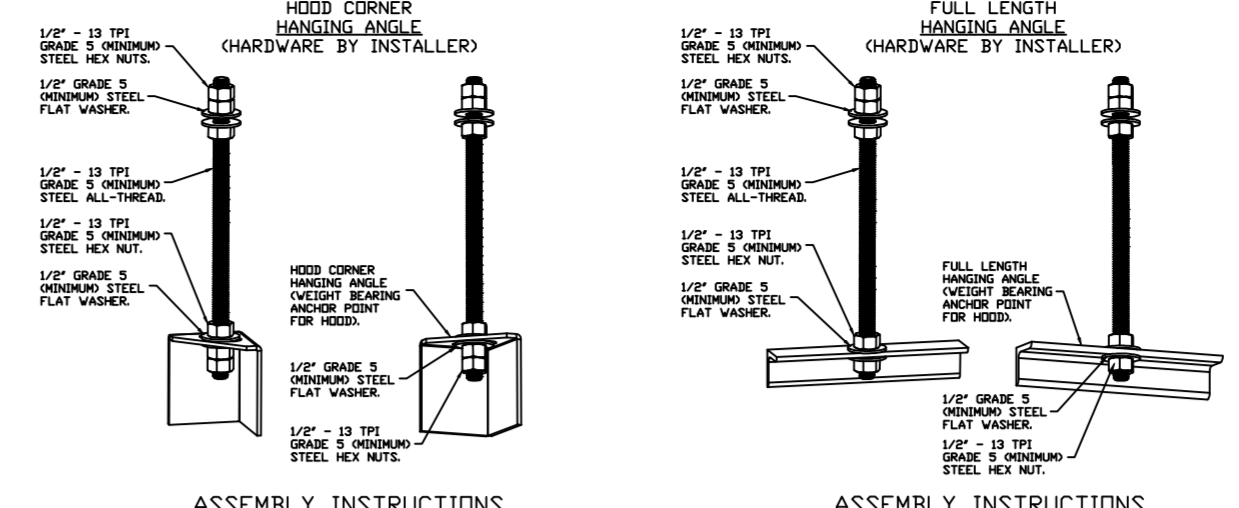
THE CAPTRATE GREASE-STOP SOLID WAS TESTED TO ASTM STANDARD ASTM F2619-05. MANUFACTURER APPROVED FOR USE IN SOLID FUEL APPLICATIONS AS A SPARK ARRESTER.



CAPTIVE FILTERS ARE BUILT IN COMPLIANCE WITH:
NFPA #96.
NSF STANDARD #2.
UL STANDARD #104.
INT. MECH. CODE (IMC).
ULC-5649.

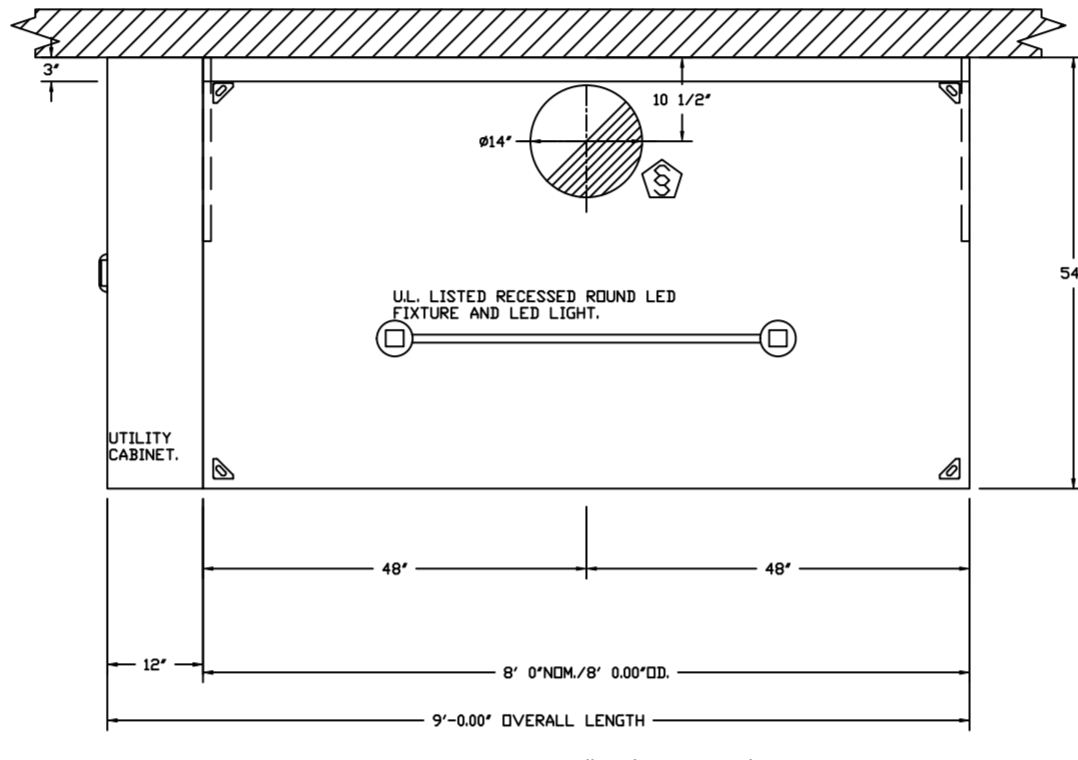


PATENT NUMBERS
EXHAUST HOODS ND-2/BD-2/SND-2 (CANADA) - CA PATENT 2520435 C.

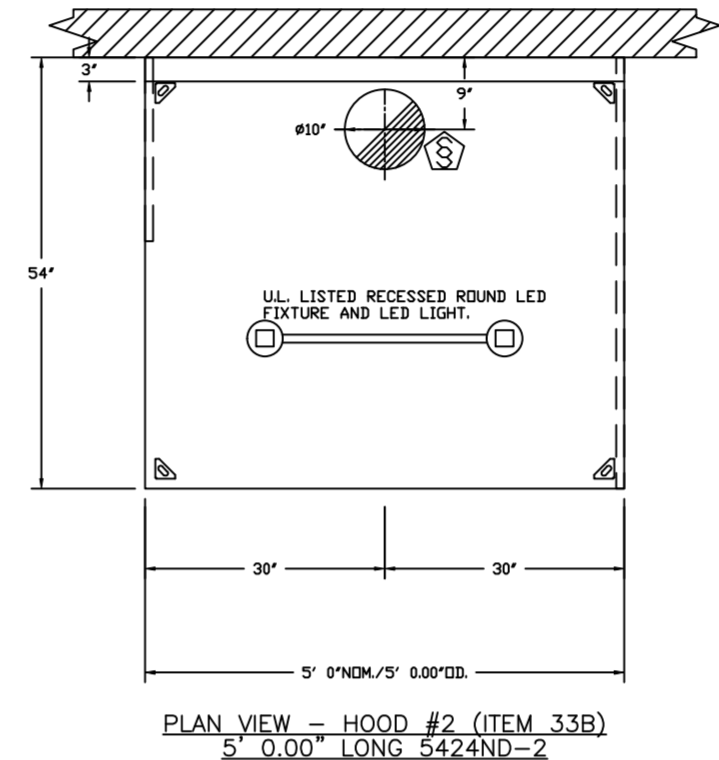


ASSEMBLY INSTRUCTIONS

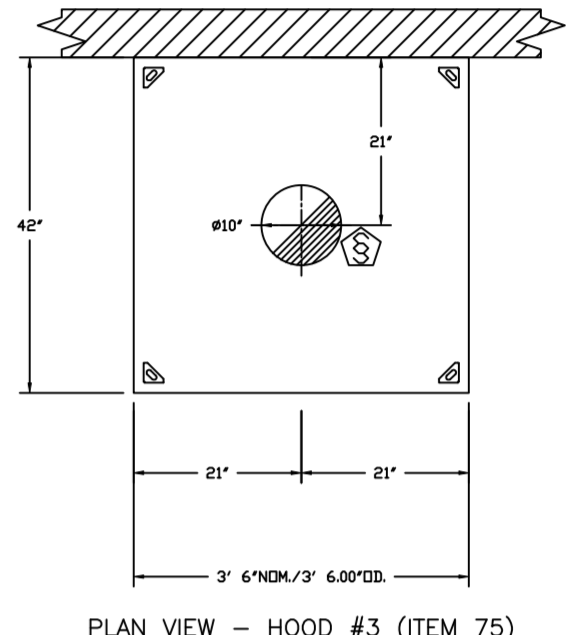
HANGING ANGLE MUST BE SUPPORTED WITH 1/2" - 13 TPI GRADE 5 (MINIMUM) ALL-THREAD, SANDWICH HANGING ANGLES AND CEILING ANCHOR POINTS WITH 1/2" GRADE 5 (MINIMUM) STEEL FLAT WASHERS AND 1/2" - 13 TPI GRADE 5 (MINIMUM) HEX NUTS AS SHOWN. MUST USE DOUBLED HEX NUT CONFIGURATION BENEATH HOOD HANGING ANGLES AND ABOVE CEILING ANCHORS. MAINTAIN 1/4" OF EXPOSED THREADS BENEATH BOTTOM HEX NUT. TORQUE ALL HEX NUTS TO 57 FT-LBS.



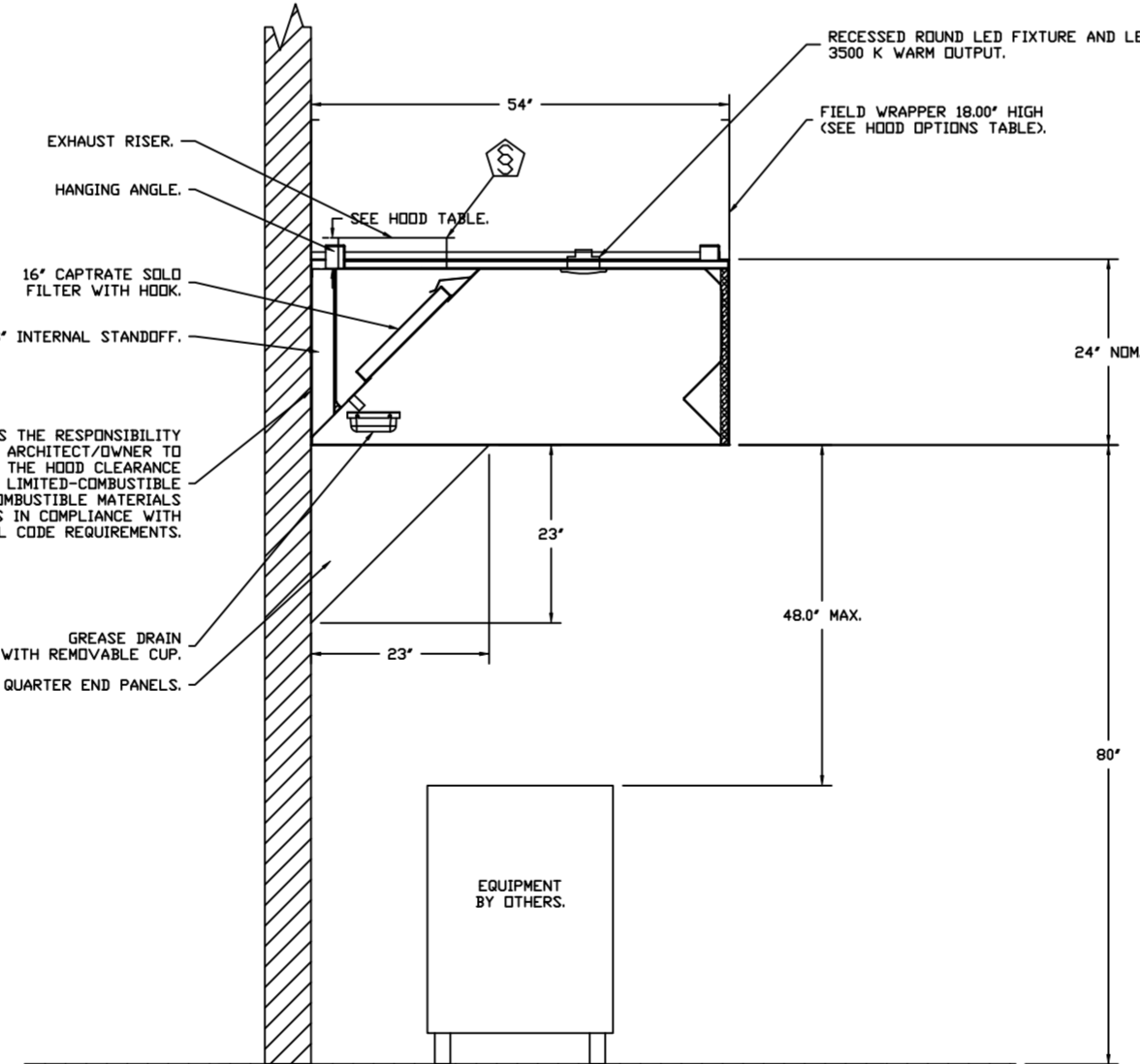
PLAN VIEW - HOOD #1 (ITEM 33A)
8' 0.00" LONG 5424ND-2



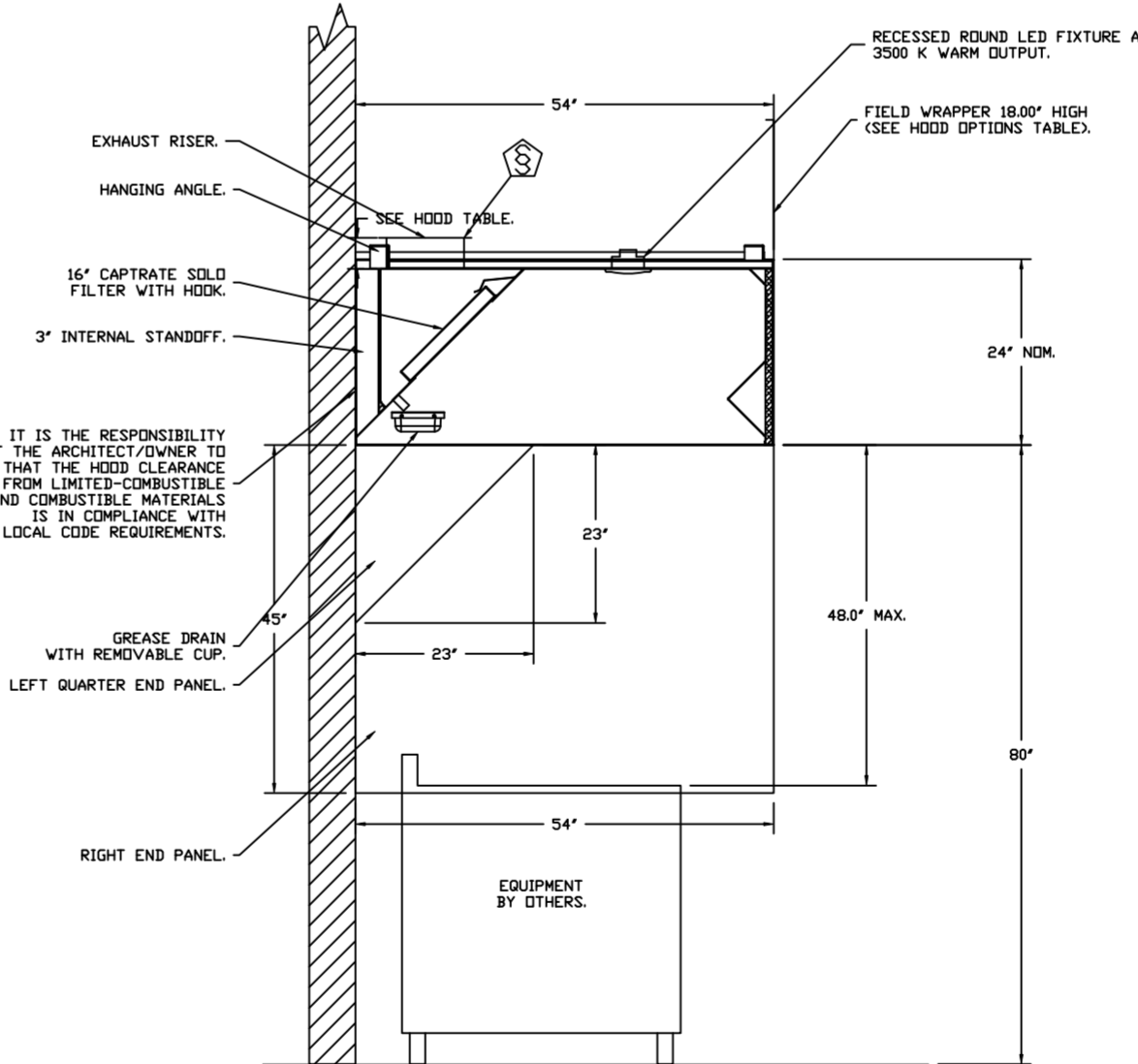
PLAN VIEW - HOOD #2 (ITEM 33B)
5' 0.00" LONG 5424ND-2



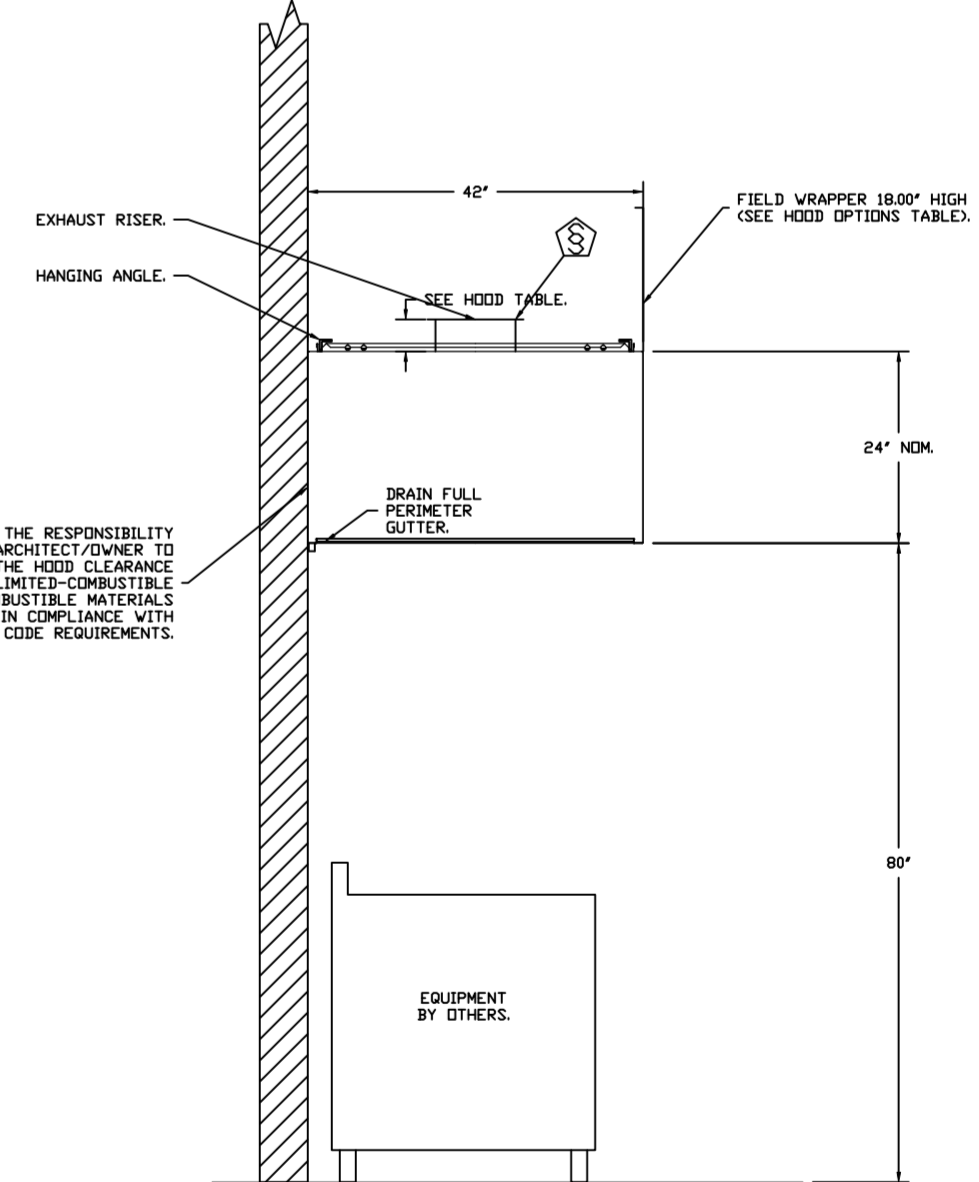
PLAN VIEW - HOOD #3 (ITEM 75)
3' 6.00" LONG 4224VHB-G



SECTION VIEW - MODEL 5424ND-2
HOOD - #1 (ITEM 33A)



SECTION VIEW - MODEL 5424ND-2
HOOD - #2 (ITEM 33B)



SECTION VIEW - MODEL 4224VHB-G
HOOD - #3 (ITEM 75)

FOR QUESTIONS, CALL THE:
KANSAS CITY REGIONAL OFFICE
1126 SWIFT STREET, KANSAS CITY, MO 64116
PHONE: (816) 221-8575
FAX: (816) 221-8311

CUSTOMER APPROVAL TO MANUFACTURE:

Approved as Noted
Approved with NO Exception Taken
Revise and Resubmit
SIGNATURE _____ Date _____
Your Title _____

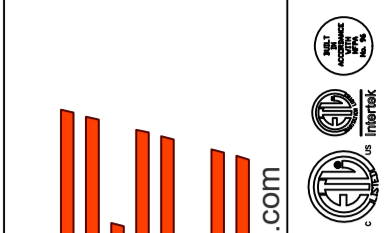
***** NOTE *****
ALL WALLS AND STRUCTURES THAT COME WITHIN 18" OF HOOD MUST BE METAL STUDS AND SHEETROCK. WOOD STUDS OR ANY OTHER COMBUSTIBLE MATERIAL WITHIN 18" OF HOOD NO ALLOWED.

***** NOTE *****
HOOD MANUFACTURER RECOMMENDS NO RETURNS OR 4-WAY DIFFUSERS WITHIN 10 FEET OF HOOD IN ALL DIRECTION.

***** NOTE *****
MAKEUP AIR SHALL BE DELIVERED INTO SPACE IN MANNER THAT WILL NOT DISRUPT HOODS ABILITY TO CAPTURE AND CONTAIN.

REVISIONS

DESCRIPTION	DATE:



www.captiveaire.com
www.captiveaire.com



Freddy's - West Columbia, SC
WEST COLUMBIA, SC, 29169

DATE: 6/30/2022

DWG.#:
5537974

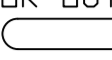
DRAWN BY: michael.co

SCALE:
1/2" = 1'-0"

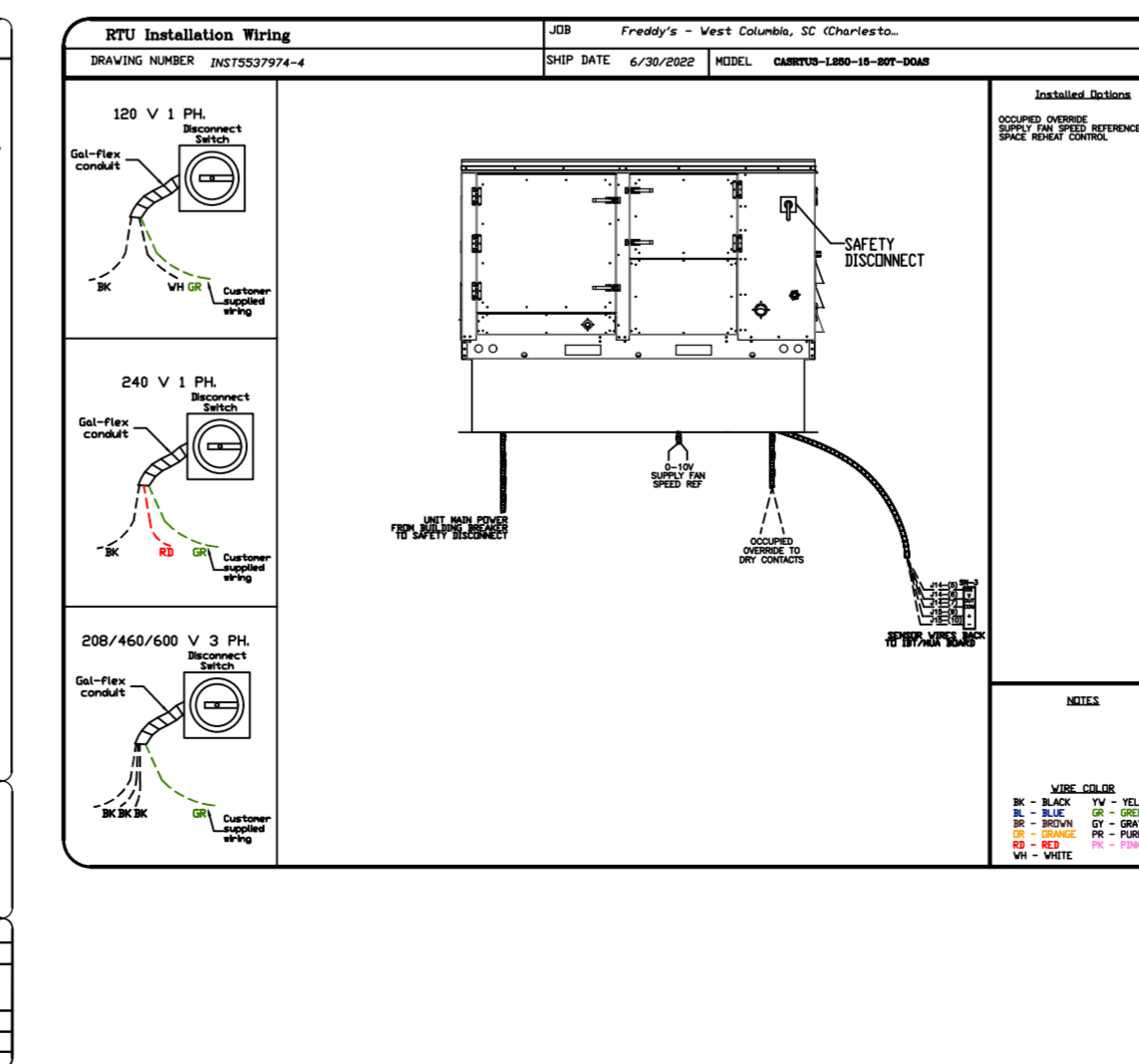
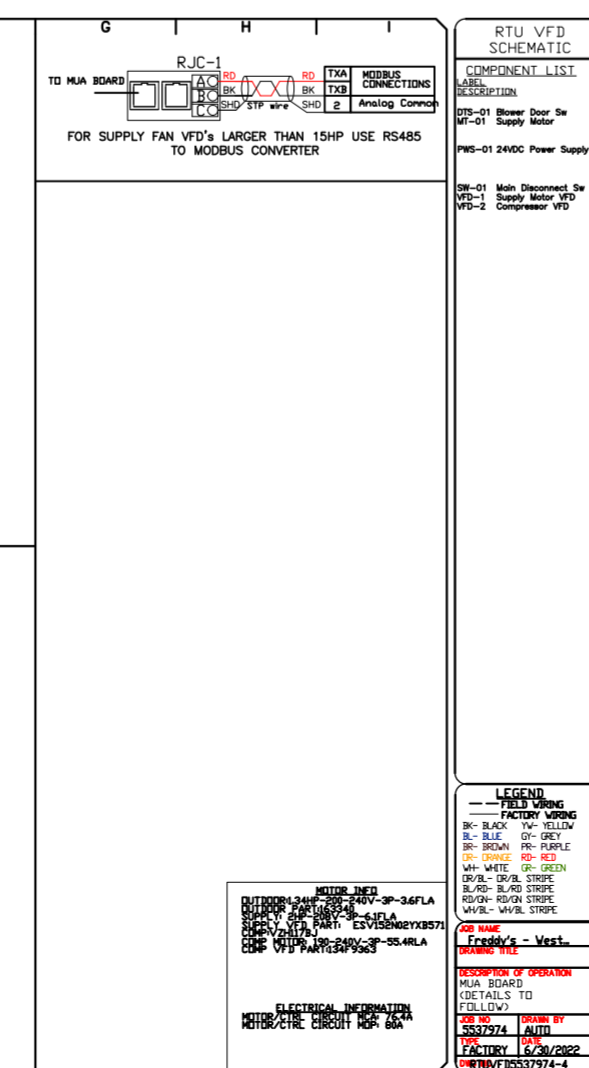
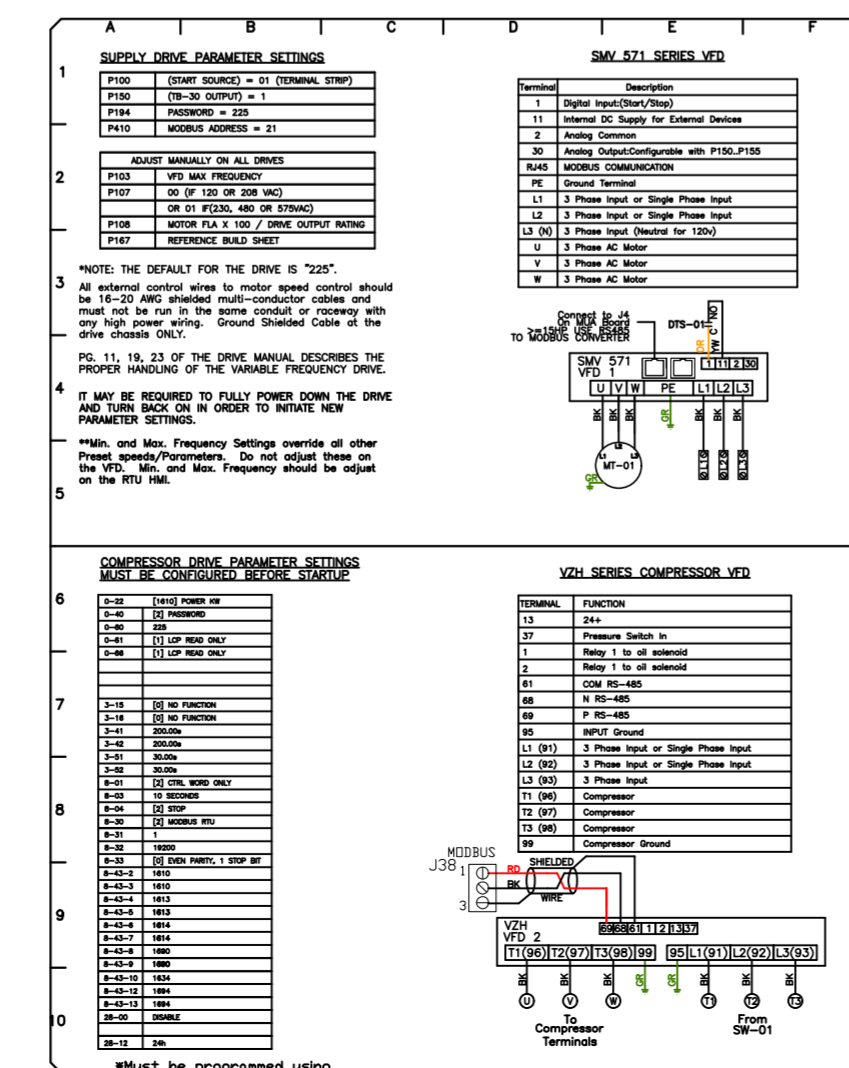
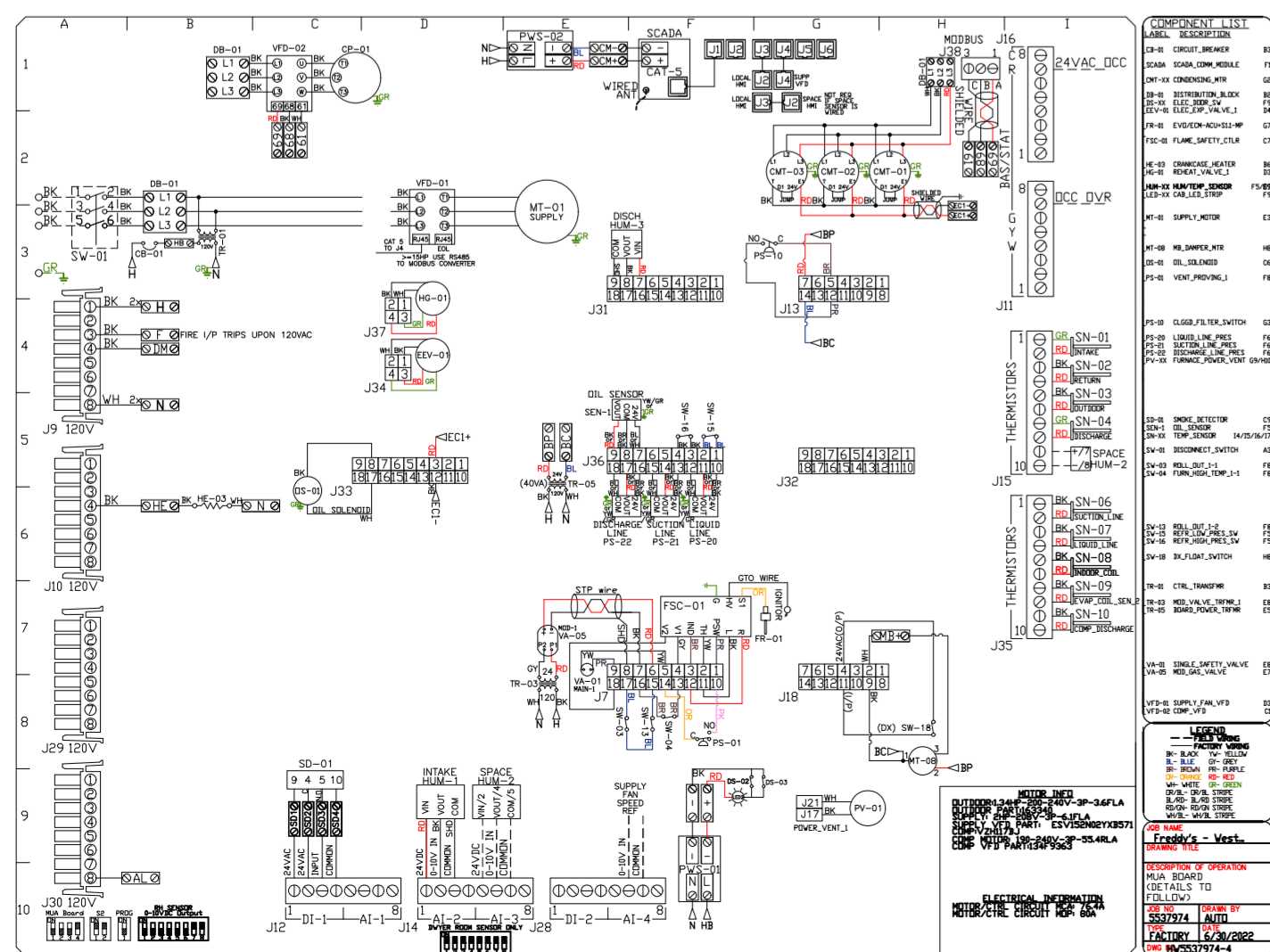
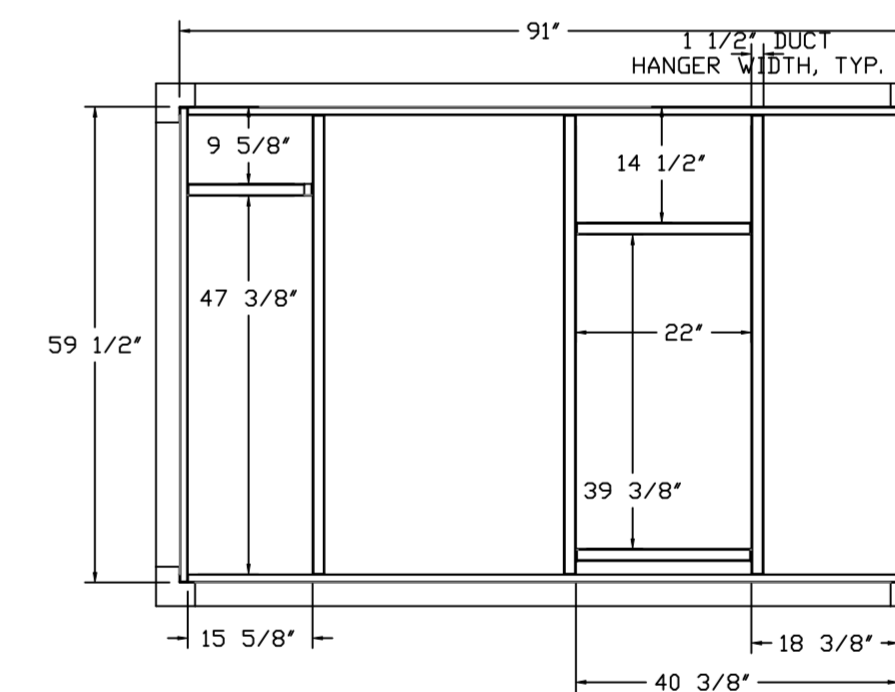
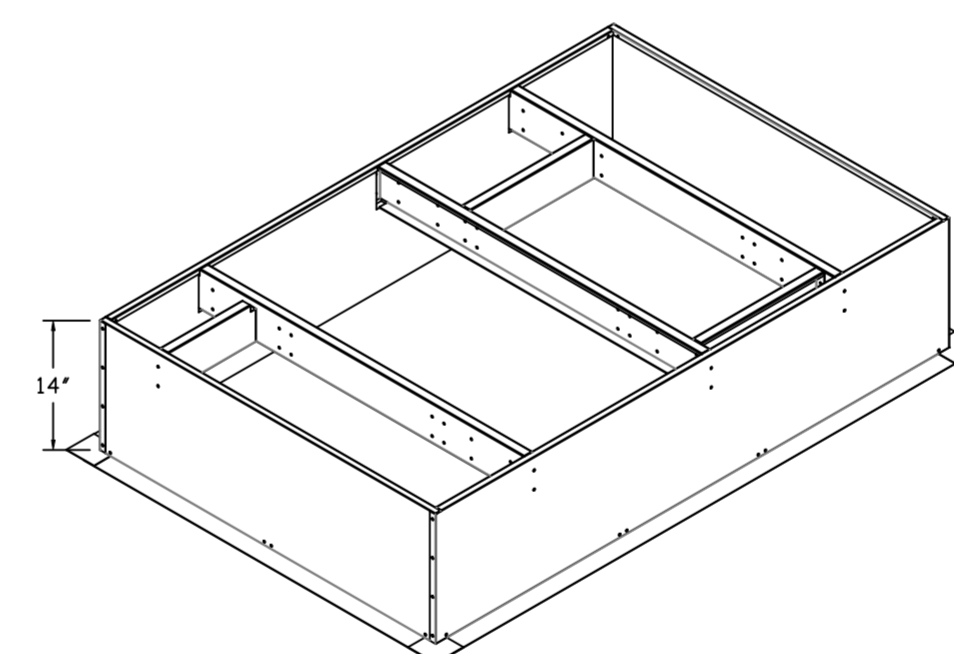
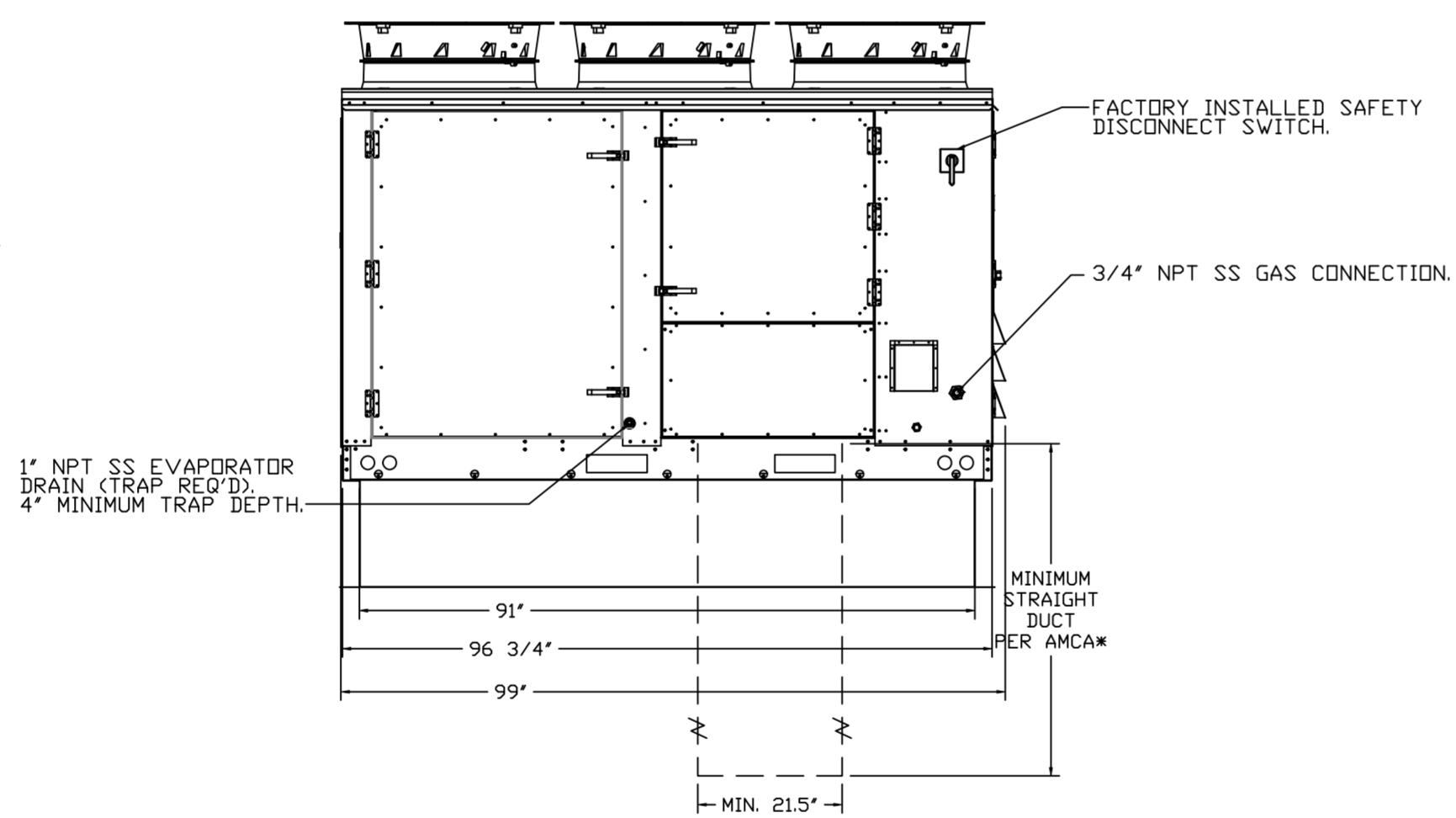
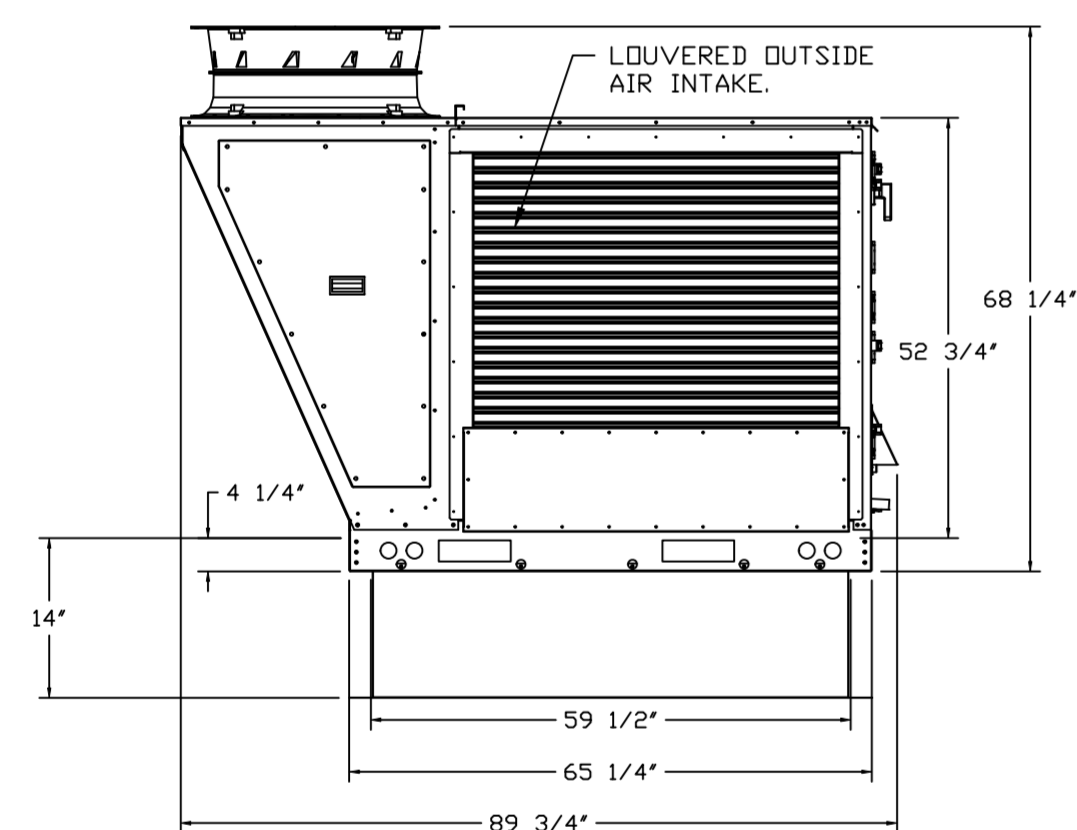
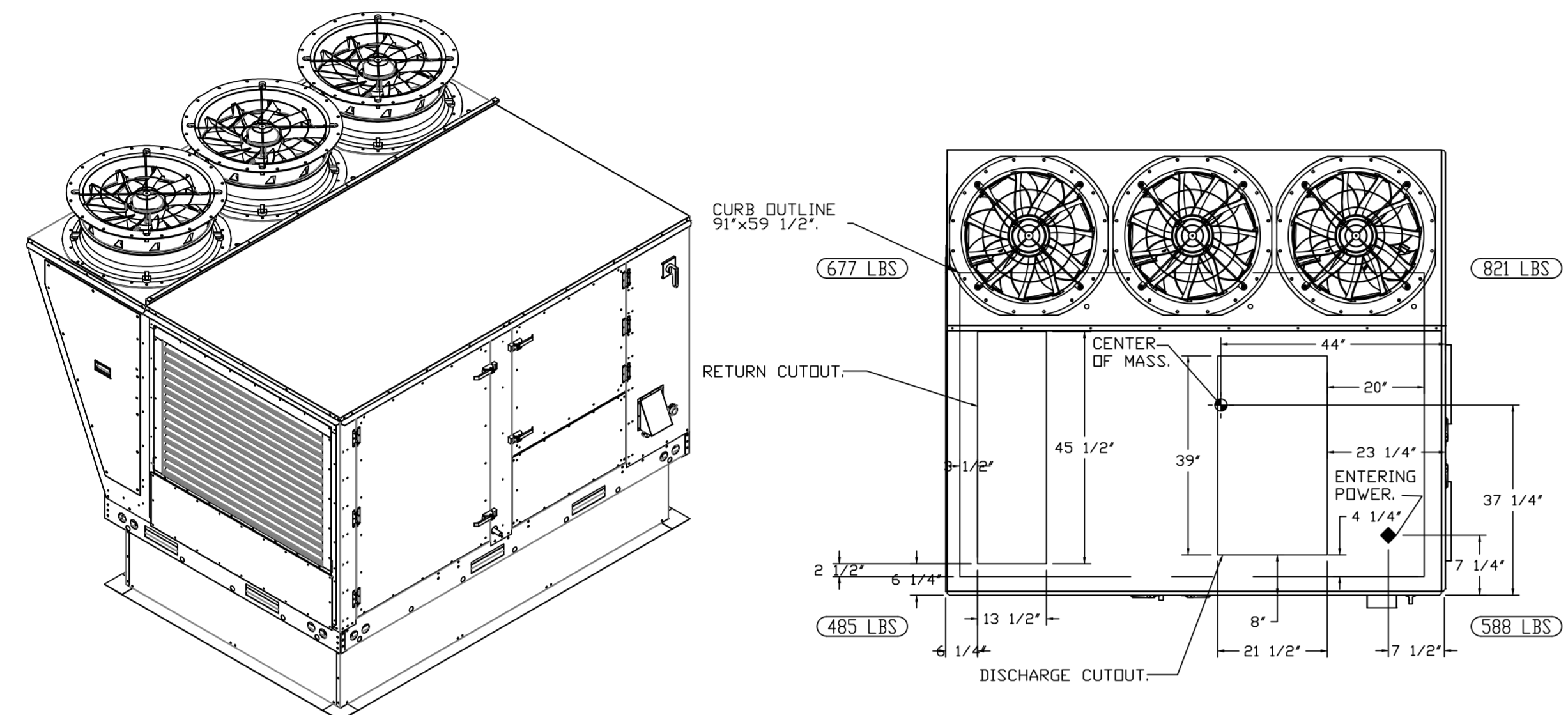
MASTER DRAWING

SHEET NO.
1

NOTES:

- DO NOT OBSTRUCT OUTSIDE AIR INLET, OUTSIDE AIR COIL OR OUTSIDE AIR FAN.
-  DENOTES CORNER WEIGHT.
- ROOF OPENING MUST BE 2' SMALLER THAN CURB DIMENSIONS IN BOTH DIRECTIONS.

*NOTE: SUPPLY DUCT MUST BE INSTALLED TO MEET SMACNA STANDARDS. A MINIMUM STRAIGHT DUCT LENGTH MUST BE MAINTAINED DOWNSTREAM OF UNIT DISCHARGE AS OUTLINED IN AMCA PUBLICATION 201. WHEN USING RECTANGULAR DUCTWORK, ELBOWS MUST BE RADIUS THROAT, RADIUS BACK WITH TURNING VANES. FLEXIBLE DUCTWORK AND SQUARE THROAT/SQUARE BACK ELBOWS SHOULD NOT BE USED. ANY TRANSITION AND/OR TURNS IN THE DUCTWORK WILL CAUSE SYSTEM EFFECT. SYSTEM EFFECT WILL DRASTICALLY INCREASE STATIC PRESSURE AND REDUCE AIRFLOW. DO NOT RELY ON UNIT TO SUPPORT DUCT IN ANY WAY. FAILURE TO PROPERLY SIZE DUCTWORK MAY CAUSE SYSTEM EFFECTS AND REDUCE PERFORMANCE OF THE EQUIPMENT. SUGGESTED STRAIGHT DUCT SIZE IS 21.5" x 39".



REVISIONS

DESCRIPTION	DATE

CAPTIVE

www.captiveair.com

HBT Foodservice

104 W 8th St Suite 204, Kansas City, MO, 64105 PHONE: (816) 221-8575 FAX: (816) 221-8311 EMAIL: reg9@captivair.com

Freddy's - West Columbia, SC

WEST COLUMBIA, SC, 29169

DATE: 6/30/2022

DWG.#: 5537974

DRAWN BY: michael.co

SCALE: 1/2" = 1'-0"

MASTER DRAWING

SHEET NO. 3

