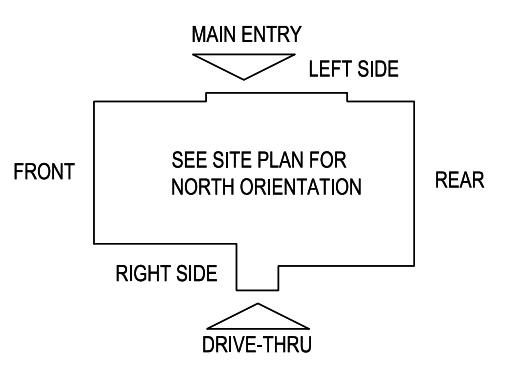


E5 HVAC PLAN
SCALE: 1/4" = 1'-0"



SUPPLY DUCTWORK SIZING TABLE*

| ROUND | | RECTANGULAR | |
|--|---------------|-------------|---------------|
| SIZE | CFM RANGE | SIZE | CFM RANGE |
| 8" | 115 - 235 | 8"x8" | 205 - 300 |
| 10" | 240 - 435 | 10"x8" | 305 - 400 |
| 12" | 440 - 710 | 10"x10" | 405 - 550 |
| 14" | 715 - 1,070 | 12"x10" | 555 - 700 |
| 16" | 1,075 - 1,530 | 12"x12" | 705 - 900 |
| 18" | 1,535 - 2,090 | 14"x12" | 905 - 1,105 |
| 20" | 2,095 - 2,760 | 16"x12" | 1,110 - 1,315 |
| 22" | 2,765 - 3,550 | 18"x12" | 1,320 - 1,520 |
| 24" | 3,555 - 4,470 | 20"x12" | 1,525 - 1,740 |
| *CONTRACTOR MAY SUBSTITUTE RECTANGULAR FOR ROUND DUCTWORK ON MAIN RUNS AT THEIR DISCRETION. BRANCHES TO DIFFUSERS TO REMAIN ROUND. | | | |
| | | 22"x12" | 1,745 - 1,950 |
| | | 24"x12" | 1,955 - 2,170 |
| | | 26"x12" | 2,175 - 2,400 |
| | | 28"x12" | 2,405 - 2,610 |
| | | 30"x12" | 2,615 - 2,840 |
| | | 32"x12" | 2,845 - 3,070 |
| | | 34"x12" | 3,075 - 3,290 |
| | | 36"x12" | 3,295 - 3,520 |
| | | 36"x14" | 3,525 - 4,420 |

DIFFUSER, REGISTER, AND GRILLE SCHEDULE

| TAG | SERVICE | TYPE | MATERIAL | THROW | FACE | NECK | MOUNTING | MANUFACTURER/MODEL | Notes |
|-----------------|----------|-----------------|----------|------------|----------|----------|----------|---------------------|---------|
| SD-1 | SUPPLY | LOUVERED | STEEL | 4-WAY | 24X24 | SEE PLAN | LAY-IN | RAYMON PRO2 | 2, 4 |
| SD-2 - NOT USED | | | | | | | | | |
| SD-3 | SUPPLY | LOUVERED | STEEL | 3-WAY | 12X12 | SEE PLAN | SURFACE | RAYMON PRO2/QMF/DAG | 2, 4 |
| SD-4 | SUPPLY | LOUVERED | STEEL | 4-WAY | 12X12 | SEE PLAN | SURFACE | RAYMON PRO2/QMF | 2, 4 |
| SD-5 | SUPPLY | PERFORATED | STEEL | PERFORATED | 24X24 | SEE PLAN | LAY-IN | RAYMON RPR | 2, 4 |
| RG-1 | RETURN | SQUARE EGGRATE | ALUMINUM | N/A | 24X24 | 22X22 | LAY-IN | RAYMON FGEC-TB1 | 2, 3, 4 |
| EG-1 | EXHAUST | LOUVERED GRILLE | ALUMINUM | N/A | 12X12 | SEE PLAN | SURFACE | RAYMON RA-HVD | 1, 2, 4 |
| TG-1 | TRANSFER | LOUVERED GRILLE | ALUMINUM | N/A | SEE PLAN | SEE PLAN | SURFACE | RAYMON RA-RH | 2, 4 |

DIFFUSER NOTES:

- PROVIDE w/ ADJUSTABLE OPPOSED BLADE DAMPER
- VERIFY ALL DIFFUSERS AND RETURN GRILLE COLORS WITH OWNER AND ARCHITECT
- PROVIDE w/ 22X22 PLENUM BOX.
- ALL DIFFUSERS AND RETURNS LOCATED IN BLACK CEILING SHALL BE FLAT BLACK FINISH.

NOTE: ALL DUCTWORK TO BE LOCATED IN TRUSS SPACE WHERE POSSIBLE. SEE FRAMING PLAN.
HVAC SETPOINTS RECOMMENDED BY CORPORATE OPERATIONAL GUIDELINES:
1. DINING: HEATING 70°, COOLING 72°
2. KITCHEN: HEATING 68°, COOLING 74°

© 2024

NEW CULVER'S RESTAURANT
500 Mathis Mill Road
Albertville, AL 35951
County of MARSHALL

Culver's
Culver Franchising System, Inc.
1240 Water Street
Prairie du Sac, WI 53578
608-843-7880

OWNER:
S & L PROPERTIES ALBERTVILLE LLC
2651 Kirling Court
Portage, WI 53901
Jeff Liegel, Realty Manager / Member
608-742-2893

OLLMANN ASSOCIATES ARCHITECTS, P.C.
200 South State Street
Belleville, Illinois 61008
815-544-7190 Phone
© OAA. All rights reserved. Any copying, transmission or disclosure subject to OAA written approval.

HVAC PLAN, DIFFUSER SCHEDULE

Revision: 04-05-2024
Date: 04-05-2024

2024-010
M101

GENERAL NOTES

- DEVIATIONS FROM THE HVAC PLANS ARE THE RESPONSIBILITY OF THE HVAC CONTRACTOR & WILL NOT RESULT IN ADDITIONAL COSTS TO THE OWNER UNLESS WRITTEN CHANGE ORDERS ARE APPROVED BY THE OWNER.
- ALL WORK TO BE PERFORMED TO STATE CODE & SMACNA GUIDELINES.
- INSTALL UNITS ACCORDING TO MANUFACTURERS GUIDELINES.
- PROVIDE OWNER W/ OPERATION & MAINTENANCE MANUALS & SYSTEM SCHEMATICS.
- CONTRACTOR TO CONFIRM VOLTAGES & PHASES OF EQUIPMENT PRIOR TO INSTALLATION.
- VERIFY ALL EXISTING CONDITIONS PRIOR TO INSTALLATION (DRAWINGS ARE DIAGRAMMATIC IN NATURE & DO NOT REFLECT EXACT LOCATIONS OF EQUIPMENT OR OTHER APPARATUSES.)
- PROVIDE SHOP DRAWINGS TO THE ARCHITECT/DESIGNER FOR EQUIPMENT, FANS, REGISTERS, ETC. PRIOR TO PROCUREMENT.
- PROVIDE OWNER W/ COLOR CHOICES FOR SWITCHES & OTHER APPARATUSES WHERE APPLICABLE.
- VENT OWNER WATER HEATER AS REQUIRED.
- VENT DRYER THRU SIDEWALL TO EXTERIOR AS REQUIRED. MAINTAIN CLEARANCE FROM INTAKES AS NOTED.
- HANG & SUPPORT MATERIALS SHALL BE INSTALLED THE LATEST EDITION OF THE ASHRAE HANDBOOK OF FUNDAMENTALS.
- MAINTAIN AT LEAST 10 FEET CLEARANCE FROM INTAKES OR WINDOWS ON ALL EXHAUST VENTS.
- TEST, ADJUST, & CALIBRATE CONTROL SYSTEMS AS REQUIRED. PROVIDE SCHEMATICS / DESCRIPTION TO THE OWNER PRIOR TO INSTALLATION.
- INSTALLER RESPONSIBLE FOR FINAL TEST & BALANCING DURING TRAINING WEEK. PROVIDE WRITTEN REPORT BY THIRD PARTY INDEPENDENT TAB CONTRACTOR.
- VERIFY W/ OWNER EXACT HEATER LOCATION TO AVOID BUILDING FUNCTION INTERFERENCE.
- REPLACE ALL AIR FILTERS PRIOR TO TURNING SYSTEM OPERATIONS OVER TO OWNER.
- HVAC CONTRACTOR IS RESPONSIBLE FOR A COMPLETE & FULLY WORKING SYSTEM.
- DUCT DIMENSIONS LISTED ARE NET FREE - CLEAR INSIDE DIMENSIONS.
- VERIFY DUCT LOCATIONS PRIOR TO FABRICATION. (VERIFY LIMITED AREA FOR DUCTWORK & OTHER APPARATUSES.)
- INSULATE DUCT WORK TO SMACNA GUIDELINES & STATE CODES.
- INSTALL VOLUME CONTROL DAMPERS AS INDICATED ON PLANS.
- FLEXIBLE ROUND DUCT WORK NOT TO EXCEED 8 FEET IN LENGTH, AVOID UNNECESSARY TURNS & SLACK.
- RETURN AIR DUCT WORK TO BE LINED FOR SOUND ATTENUATION.
- DUCT WORK TO BE STANDARD GAUGE SHEET METAL (FIBROUS DUCT NOT ALLOWED.)
- INSULATE EXHAUST DUCT FOR EXHAUST FAN TO EXTERIOR TERMINATION.
- COORDINATE WORK W/ GENERAL CONTRACTOR & OWNER TO MAXIMIZE CEILING HEIGHT & AVOID CONFLICTS.
- S/S WALL PANELS FOR THE KITCHEN AREA ARE TO BE FURNISHED AND INSTALLED BY THE HVAC CONTRACTOR. PANELS ARE TO BE 18 GA. TYPE 304 S/S. SEE DETAILS AND LOCATIONS ON THE A103 DRAWING.
- EXHAUST FANS AND FURNACE FANS TO RUN CONTINUOUSLY DURING OCCUPIED MODE.
- NIGHT SET BACK THERMOSTATS TO BE INSTALLED ON ALL HVAC EQUIPMENT.

2024-010 CULVER'S OF ALBERTVILLE, AL ALBERTVILLE, AL

| RTU SCHEDULES | | SUPPLY FAN | | | | | COOLING | | | | | | HEATING | | | | ELECTRICAL (1) | | MANUFACTURER, MODEL | | |
|---------------|-------------|-----------------|------------|------------|------------|-------|---------|------|----------------|-------|---------------|---------------|---------------|------------|-------------|------------|----------------|----------------|---------------------|---------|---------------------|
| | | SUPPLY FAN TYPE | SA FAN VFD | SUPPLY CFM | MIN OA CFM | ESP | OA TEMP | | MIXED AIR TEMP | | SUPPLY TEMP | | COIL CAPACITY | | GAS OR ELEC | OUTPUT MBH | OAT °FDB | HEATING STAGES | | VOLTAGE | PHASE |
| | | | | | | | °FDB | °FWB | °FDB | °FWB | COIL LAT °FDB | COIL LAT °FWB | SENSIBLE MBH | LATENT MBH | | | | | | | |
| RTU-1 | DINING ROOM | MSAV | YES | 6,150 | 1,750 | 0.75" | 91 | 75 | 79.55 | 66.77 | 55.00 | 54.71 | 160 | 65 | GAS | 169 | 9 | 2 | 208 | 3 | LENNOX, ENLIGHT LGT |
| RTU-2 | KITCHEN | MSAV | YES | 6,225 | 1,725 | 0.75" | 91 | 75 | 79.43 | 66.67 | 55.00 | 54.76 | 164 | 63 | GAS | 129 | 9 | 2 | 208 | 3 | LENNOX, ENLIGHT LGT |

ADDITIONAL FACTORY INSTALLED OPTIONS FOR BOTH UNITS:

- WEATHERPROOF DISCONNECT
- FACTORY INSTALLED/FIELD POWERED GFCI
- RETURN SMOKE DETECTOR
- DRAIN PAN OVERFLOW SWITCH
- SINGLE ENTHALPY ECONOMIZER W/ FAULT DETECTION DIAGNOSTICS
- BAROMETRIC RELIEF
- HAIL GUARDS
- 2" MERV 13 FILTERS
- SS HEAT EXCHANGER
- HOT GAS REHEAT

ADDITIONAL FIELD INSTALLED OPTIONS FOR BOTH UNITS:

- 14" DOWNFLOW HYBRID CURB
- PVC DRAIN TRAP KIT
- REMOTE TEMPERATURE AND HUMIDITY SENSORS
- LENNOX MODEL CS7500 PROGRAMMABLE THERMOSTAT
- OUTDOOR AIR CFM CONTROL

NOTES:

- NOTIFY ELECTRICAL CONTRACTOR OF BREAKER REQUIREMENTS AFTER SELECTION

PRV-1 RESTROOM EXHAUST FAN - REFER TO SHEET M204

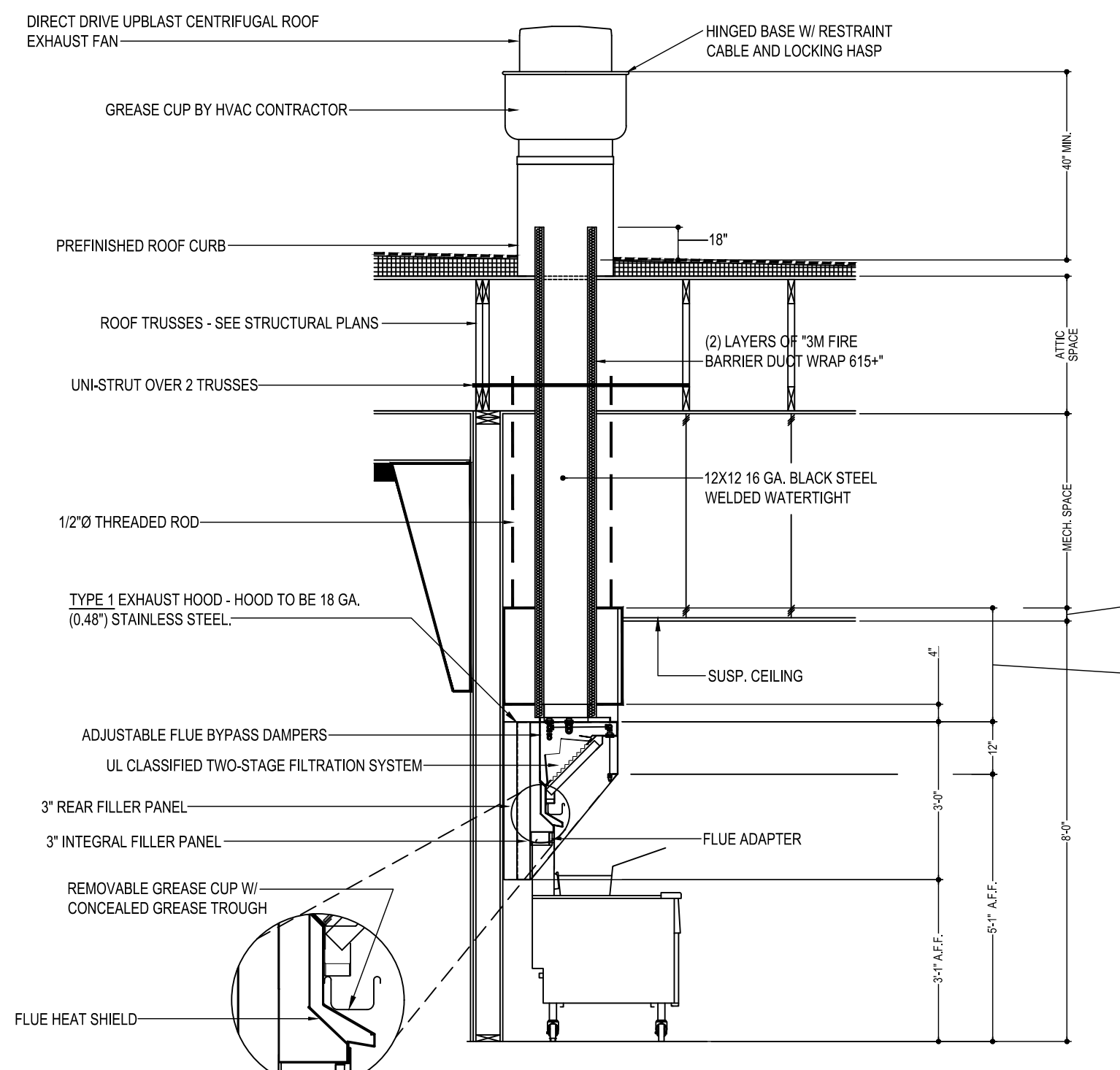
PRV-2 GRIDDLE EXHAUST FAN - REFER TO SHEET M202

PRV-3 FRYER EXHAUST FAN - REFER TO SHEET M203

EF-1A MOP ROOM EXHAUST FAN - REFER TO SHEET M204

ITEM #48A GRIDDLE HOOD - REFER TO SHEET M202

ITEM #59A FRYER HOOD - REFER TO SHEET M203



C3 KITCHEN HOOD EXHAUST DETAIL
SCALE: N.T.S.
VERIFY MOUNTING HEIGHTS W/ OWNER AND GENERAL CONTRACTOR

CONTROL NOTES

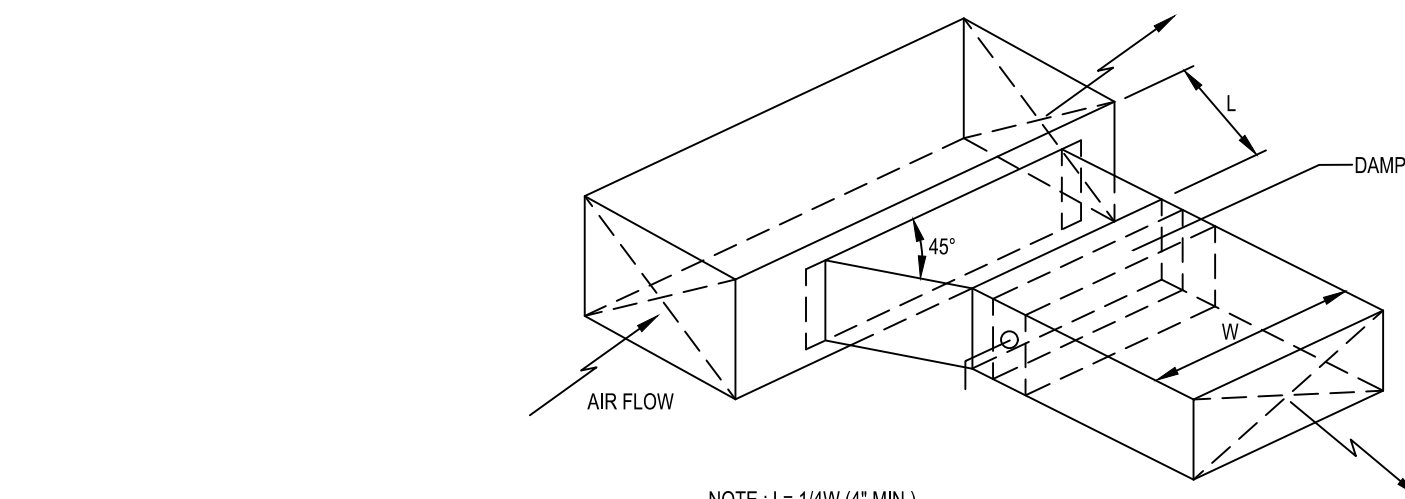
NOTE: KITCHEN HOODS SUPPLIED AND INSTALLED BY HVAC CONTRACTOR

- WIRE RTU-1, RTU-2 TO SHUT-DOWN & EXHAUST HOOD FANS TO CONTINUE TO RUN UPON ACTIVATION OF THE ANSUL SYSTEM.
- WIRE RTU-1 & RTU-2 TO SHUT-DOWN UPON ACTIVATION OF ANY IN-DUCT SMOKE DETECTOR.
- OCCUPIED MODE: FANS IN RTU-1 & RTU-2, EXHAUST FANS PRV-1, PRV-2, PRV-3 AND EF-1 TO RUN CONTINUOUSLY.
- UNOCCUPIED MODE: FANS IN RTU-1 & RTU-2 TO RUN ONLY WHEN COOLING OR HEATING IS CALLED FOR.

TEST & BALANCE NOTES

- ACCUREX WILL PROVIDE BALANCED AIRFLOW & FUNCTIONAL CHARACTERISTICS OF THE HVAC SYSTEM AS THEY RELATE TO AIRFLOW & AIR PRESSURE ONLY. SERVICES TO BE PERFORMED BY A CERTIFIED NEBB FIRM & ITS MANAGING GROUP NATIONAL TAB.
- SERVICES NOT INCLUDED: PULLEY / SHEAVE CHANGES, MOTOR CHANGE OUTS, OR RETURN TRIPS DUE TO DELAYS CAUSED BY JOB INCOMPLETENESS.
- ESTABLISH MINIMUM OUTSIDE AIR FLOW INDICATED ON SCHEDULES AT ALL SUPPLY FAN SPEEDS.

| AIR BALANCE TABLE | | | | |
|---|-------------|------------|------------|-----------------|
| EXHAUST AIR FLOW | | | | |
| EQUIPMENT TAG | SERVICE | CFM | | |
| PRV-1 | RESTROOMS | 400 | | |
| PRV-2 | ITEM #49 | 1,500 | | |
| PRV-3 | ITEM #59 | 1,500 | | |
| EF-1A | MOP ROOM | 75 | | |
| TOTAL = | | 3,475 | | |
| VENTILATION REQUIRED PER 2021 INTERNATIONAL MECHANICAL CODE | | | | |
| EQUIPMENT TAG | SERVICE | CFM | | |
| RTU-1 | DINING ROOM | 1,795 | | |
| RTU-2 | KITCHEN | 240 | | |
| TOTAL = | | 2,035 | | |
| 3,475 > 2,035 -> USE 3,475 CFM FOR OUTSIDE AIR CFM | | | | |
| OVERALL AIRFLOW SUMMARY | | | | |
| EQUIPMENT TAG | SERVICE | SUPPLY CFM | RETURN CFM | OUTSIDE AIR CFM |
| RTU-1 | DINING ROOM | 6,150 | 4,400 | 1,750 |
| RTU-2 | KITCHEN | 6,225 | 4,500 | 1,725 |
| TOTAL OUTSIDE AIR CFM = | | | | 3,475 |

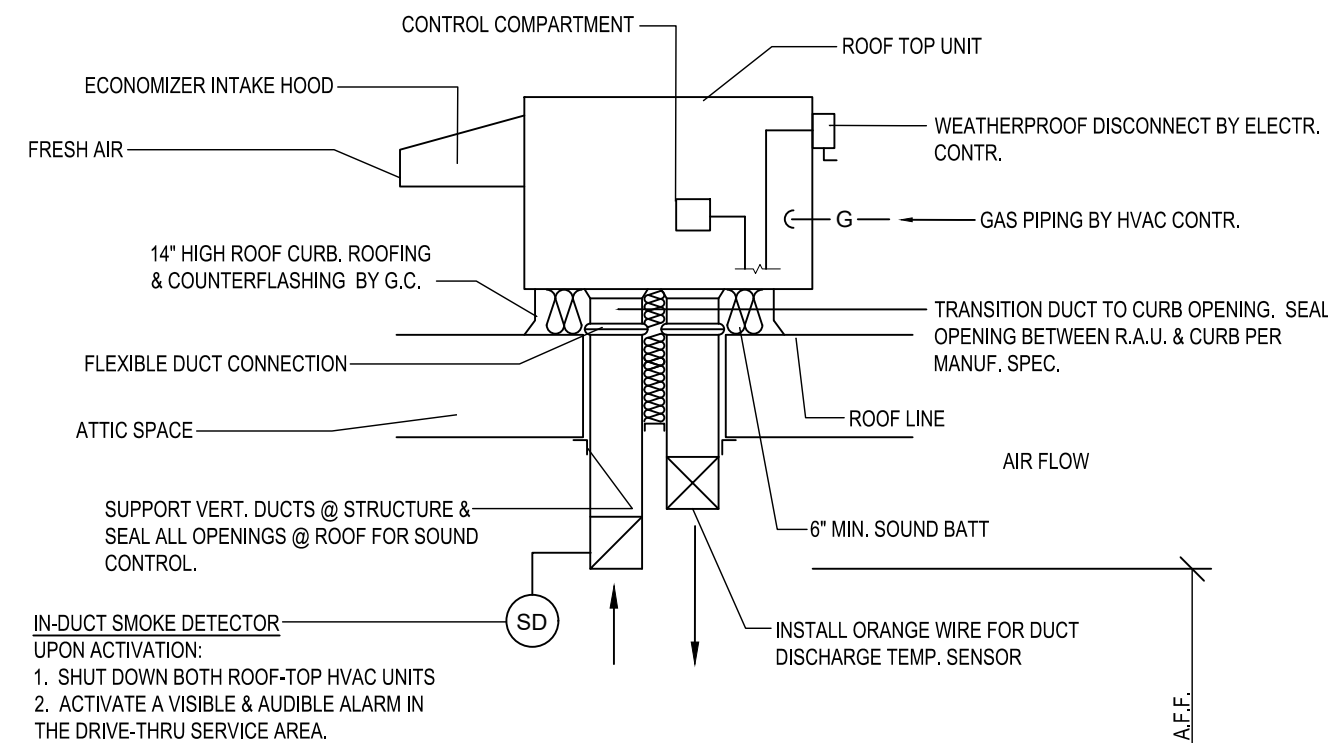


NOTE: L= 14W (4" MIN.)

C6 BRANCH DUCT TAKEOFF DETAILS
SCALE: N.T.S.

NATIONAL ACCOUNT PROGRAM

- LENNOX INDUSTRIES, INC.** - ROOFTOP HVAC EQUIPMENT
SALES: LennoxNationalAccounts@Lennoxind.com copy to Dave.Ebner@Lennoxind.com
NATIONAL ACCOUNT TECHNICAL SUPPORT: (800) 367-6286 Option #2 lennoxind.com
- ACCUREX/ GREENHECK FAN CORPORATION** - KITCHEN HOODS, EXHAUST FANS, ROOF CURBS, ANSUL SYSTEMS, ACCESSORIES AND TEST AND BALANCE
CONTACT PHILIP KRAFT: 1-282-227-7865 philip.kraft@accurex.com
SECONDARY CONTACT BRAD BORCHARDT: 1-715-551-0869 brad.borchardt@accurex.com
SECONDARY CONTACT ANDY JACOBS: andy.jacobs@accurex.com
ACCUREX WILL PROVIDE BALANCED AIRFLOW AND FUNCTIONAL CHARACTERISTICS OF THE HVAC AS THEY RELATE TO AIRFLOW AND RESISTANCE ONLY. SERVICES TO BE PERFORMED BY A CERTIFIED NEBB FIRM AND ITS MANAGING GROUP - NATIONAL TAB
- RAYMON AIR DISTRIBUTION EQUIPMENT** - DIFFUSERS AND GRILLES
NATIONAL ACCOUNTS SALES: HUNZICKER LLC, MARIE WILSON - (608) 945-9551 marie@hunzickercilic.com



A6 ROOFTOP HVAC UNIT
SCALE: N.T.S.

LENNOX SETTINGS FOR CULVERS

IN ORDER TO SET UP THE RTU'S YOU WILL NEED TO DOWNLOAD LENNOX CORE SERVICE APP, AND PAIR YOUR DEVICE WITH THE CORE CONTROLLER. ONCE PAIRED YOU WILL SEE THE OPERATION OVERVIEW SCREEN. SEE INSTALLATION MANUAL FOR INSTRUCTIONS ON DOWNLOADING THE APP, OR SCAN THE QR CODE ON THE FRONT COVER OF THE CONTROLLER

HEAT DELAY ADJUSTMENT

- HEAT DELAY WILL BE PR68 IN THE CORE CONTROLLER AND CHANGED IN THE APP AS SHOWN IN THE MENU PATH BELOW. DEFAULT IS SET AT 3600 SECONDS.
- TAP THE MENU BUTTON, (THREE LINES IN THE UPPER LEFT OF THE SCREEN) TO OPEN THE MENU.
 - TAP SETUP
 - TAP TEST AND BALANCE
 - TAP DAMPER

GLOBAL ECONOMIZER MODE (KITCHEN UNIT ONLY)

- THIS IS SET BY CHANGING CONFIGURATION ID#1 CHARACTER 2 TO G
- FROM THE MAIN SCREEN (OPERATION OVERVIEW) TAP THE MENU BUTTON (THREE LINES IN THE UPPER LEFT OF THE SCREEN) TO OPEN THE MENU
 - TAP INSTALL
 - TAP NEXT ON DATE AND TIME
 - TAP NEXT ON RTU NAME, MODEL NUMBER, SERIAL NUMBER AND CATEGORY IF ALREADY ENTERED, IF NOT PLEASE ENTER
 - TAP CONFIGURATION ID 1 AND CHANGE 2ND CHARACTER TO G

ECONOMIZER MINIMUM POSITION SET-UP

- THIS IS ADJUSTED THROUGH THE MENU FROM THE MAIN SCREEN
- TAP THE MENU BUTTON (THREE LINES IN THE UPPER LEFT OF THE SCREEN)
 - SCROLL DOWN AND TAP RTU OPTIONS
 - TAP EDIT PARAMETERS
 - CHOOSE FROM THE CATEGORY OF PARAMETERS LISTED (AIRFLOW)
 - CHOOSE THE PARAMETER TO ADJUST (132) MINIMUM FRESH AIR DAMPER POSITION DURING OCCUPIED OPERATION

OCCUPIED AND UNOCCUPIED

- USING 24V THERMOSTAT CONTROL, OCCUPIED/ UNOCCUPIED WILL BE DETERMINED BY INPUT ON P297-8 ON THE IM BOARD
- FOR (KITCHEN UNIT ONLY) BOTH THE THERMOSTAT AND HOOD FANS MUST BE TIED INTO P297-8 ON THE IM CONTROL BOARD

FRESH AIR TEMPERING (HEATING)

- THIS IS ADJUSTED THROUGH THE MENU FROM THE MAIN SCREEN
- TAP THE MENU BUTTON (THREE LINES IN THE UPPER LEFT OF THE SCREEN) TO OPEN THE MENU
 - TAP SETUP
 - TAP TEST AND BALANCE
 - TAP DAMPER
- THERE ARE SEVERAL SETTINGS TO SELECT IN THIS MENU PATH BEFORE REACHING THE DESIRED SETTING. FRESH AIR HEATING ENABLED =YES OR NO. AFTER ENABLING FAH THE NEXT SCREEN WILL ALLOW THE FAH SET POINT TO BE CONFIGURED. SUGGESTED FAH TEMPERATURE RANGES 65-67 DEGREES F. VERIFY WITH ENGINEER

FRESH AIR TEMPERING (COOLING)

- THIS IS ADJUSTED THROUGH THE MENU FROM THE MAIN SCREEN
- TAP THE MENU BUTTON (THREE LINES IN THE UPPER LEFT OF THE SCREEN) TO OPEN THE MENU
 - TAP SETUP
 - TAP TEST AND BALANCE
 - TAP DAMPER
- THERE ARE SEVERAL SETTINGS TO SELECT IN THIS MENU PATH BEFORE REACHING THE DESIRED SETTING. FRESH AIR HEATING ENABLED =YES OR NO. AFTER ENABLING FAH THE NEXT SCREEN WILL ALLOW THE FAH SET POINT TO BE CONFIGURED. SUGGESTED FAH TEMPERATURE RANGES 73-75 DEGREES F. VERIFY WITH ENGINEER

ENSURE THAT THE PROBE STYLE SENSOR GETS INSTALLED IN THE SUPPLY DUCTWORK FOR FAH/FACT TO OPERATE PROPERLY.

FOR HELP PLEASE CALL LENNOX NATIONAL ACCOUNT TECH SUPPORT AT 1-800-367-6285

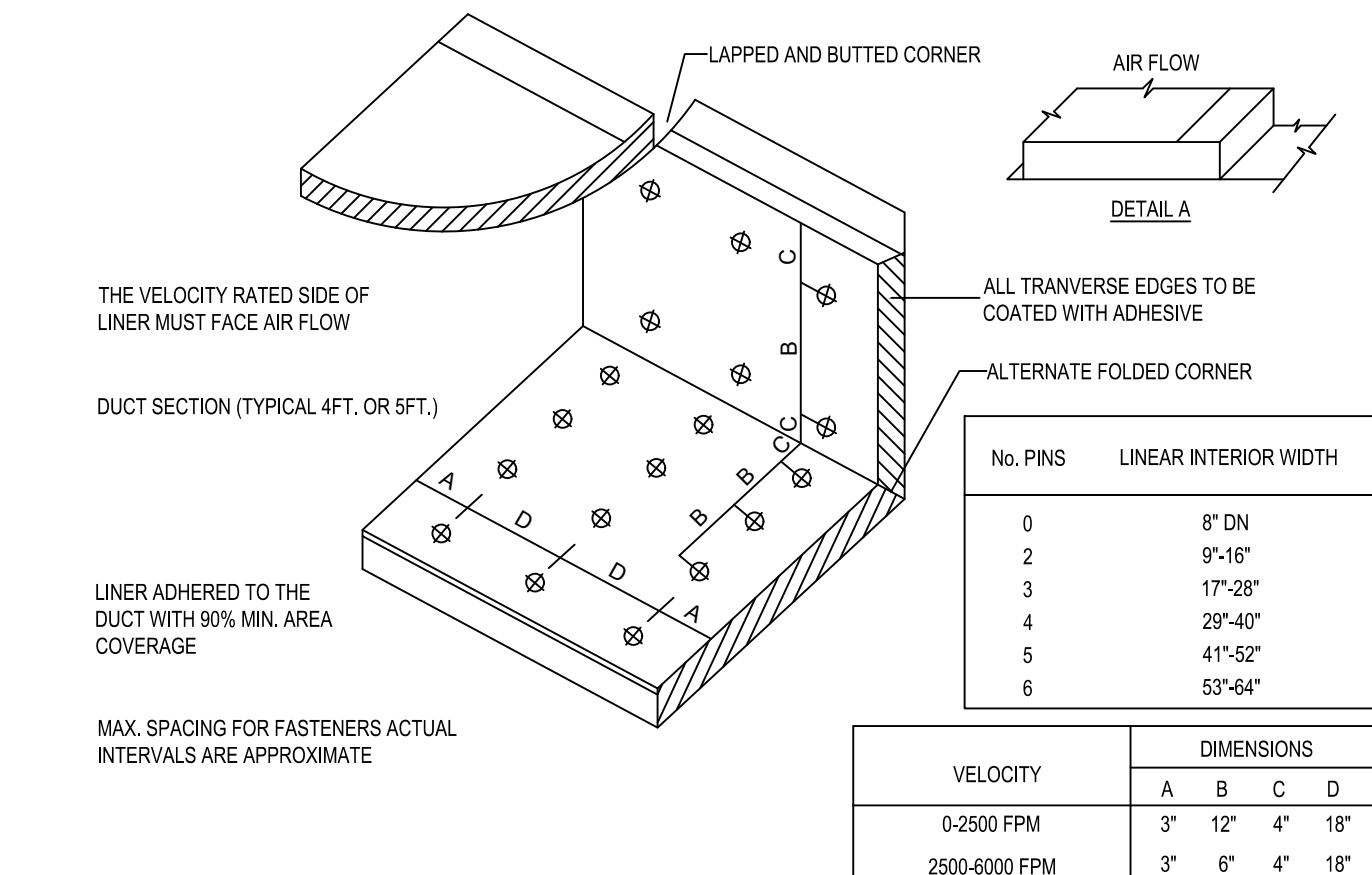
CHECK FOR CORRECT OPERATION AND WIRING OF ALL SENSORS

COOKING APPLIANCE / TYPE 1 HOOD INTERLOCK

- REMOTE SWITCH ON - POWER TO KITCHEN FAN CONTROL CENTER (KFCC)
- KFCC CONTROLS:
 - EXHAUST FANS PRV-2 (GRILLE) & PRV-3 (FRYERS) ARE STARTED.
 - OPENS OUTSIDE AIR INTAKE ON RTU-1 & RTU-2 TO MINIMUM FRESH AIR OPENING.
 - POWER TO OUTLETS #51 (GRILLE) & #60 (FRYERS).
- GRILLE & FRYER CAN BE STARTED.
- IN CASE OF FIRE:
 - SHUNT TRIP BREAK FOR GRILLE & FRYERS OUTLET TRIPS.
 - ANSUL SYSTEM IS ACTIVATED.
 - THE MECHANICAL GAS VALVES CLOSES.
 - SHUT DOWN RTU-1 & RTU-2 & CLOSE OUTSIDE AIR.
 - EXHAUST FANS PRV-2 & PRV-3 CONTINUE TO RUN.

GREASE HOOD FIRE SUPPRESSION SYSTEM

WET-CHEMICAL EXTINGUISHING SYSTEMS SHALL BE INSTALLED, MAINTAINED, PERIODICALLY INSPECTED AND TESTED IN ACCORDANCE WITH NFPA 17A AND THEIR LISTING.



E5 DUCT LINER INSTALLATION DETAIL
SCALE: N.T.S.
NOTE: USE ONLY ON VERTICAL DROP FROM RTU TO WITHIN 9'-10" A.F.F. DUCT LINER WILL NOT BE PERMITTED ON ANY HORIZ. RUNS.

© 2024

NEW CULVER'S RESTAURANT
500 Mathis Mill Road
Albertville, AL 35951
County of MARSHALL

Calver's
Culver Franchising System, Inc.
1240 Wale Street
Prairie du Sac, WI 53578
608-843-7880

OWNER:
S & L PROPERTIES ALBERTVILLE LLC
2651 Kirling Court
Portage, WI 53901
Jeff Liegel, Realty Manager / Member
608-742-2893

OLLMANN ASSOCIATES ARCHITECTS, P.C.
200 South State Street
Belvidere, Illinois 61008
815-544-7190 Phone
© OAA. All rights reserved. Any copying, transmission or disclosure subject to OAA written approval.

HVAC SCHEDULE & DETAILS

2024-010

M201

Date: 04-05-2024
Revision:

HOOD INFORMATION

| HOOD NO. | MARK | MODEL | HOOD DIMENSIONS (IN.) | | | HOOD CONSTR. | COOKING LOAD / DUTY RATING | TOTAL CFM | EXHAUST COLLAR(S) | | | | | SUPPLY | | TOTAL WEIGHT LBS. | SECTION LOCATION |
|----------|--------------|-----------|-----------------------|-----------------|-------------------|----------------------|----------------------------|-----------|-------------------|--------|------|------|-------|---------|--------|-------------------|------------------|
| | | | LENGTH | WIDTH | HEIGHT | | | | WIDTH | LENGTH | DIA. | CFM | S.P. | MUA CFM | AC CFM | | |
| 1 | GRIDDLE HOOD | XGEP-64-S | 64 | TOP 23 BOT 8 | FRT 12 BACK 36 | 430 SS WHERE EXPOSED | MEDIUM | 1500 | 12 | 12 | | 1500 | 1.918 | | | 137 | SINGLE |

HOOD INFORMATION

| HOOD NO. | MARK | LIGHTING DETAILS | | | GREASE FILTRATION DETAILS | | | UTILITY CABINET(S) | | | | |
|----------|--------------|------------------|------------------|-----|---------------------------|-----------------|----------|--------------------|------------|----------|-------------|----------|
| | | FIXTURE TYPE | BULB / LAMP INFO | QTY | FOOT CANDLES | TYPE / MODEL | MATERIAL | QTY | SIZE (IN.) | LOCATION | FIRE SYSTEM | CONTROLS |
| 1 | GRIDDLE HOOD | | | | | GREASE GRABBER | 4 | 16 | 16 | | | |
| | | | | | | STAINLESS STEEL | 0 | 20 | 16 | | | |

HOOD OPTIONS

UL 710 LISTED W/ OUT EXHAUST FIRE DAMPER - UL #R25625
 BACK NON-INTEGRAL AIR SPACE - 3 IN WIDE
 26 IN HIGH CEILING ENCLOSURES - FRONT LEFT RIGHT - FIELD INSTALLED
 FACTORY MOUNTED EXHAUST COLLAR(S)
 PERFORMANCE ENHANCING LIP (PEL) TECHNOLOGY
 STANDING SEAM CONSTRUCTION FOR SUPERIOR STRENGTH

SPECIAL DESIGN REQUESTS

SDR #K1100145 - FLUE BYPASS HOOD
 SDR #K1800144 - CULVERS 4VAT 2FIRE PROCESS - GRIDDLE HOOD

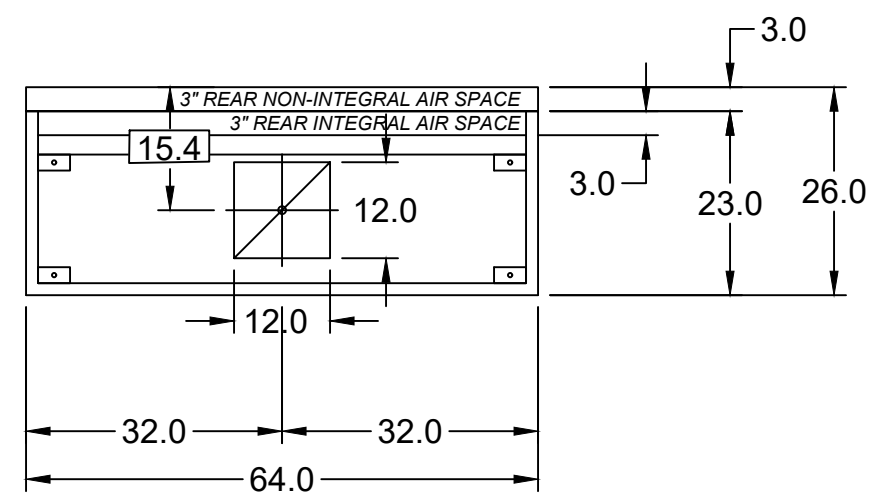
Direct Drive Upblast Centrifugal Roof Exhaust Fan

| MARK INFORMATION | | FAN INFORMATION | | | | | MOTOR INFORMATION | | | | | | |
|------------------|-------------------|-----------------|--------------|---------------------------|---------|----------------------|-------------------|-----------|----------|-----------|-----------|----------|----------|
| QTY | MARK | MODEL | VOLUME (CFM) | TOTAL EXTERNAL SP (IN WG) | FAN RPM | OPERATING POWER (HP) | WEIGHT (LB.) | SIZE (HP) | V/C/P | ENCLOSURE | MOTOR RPM | WINDINGS | NEC FLA* |
| 1 | PRV-2 Griddle Fan | XCUE-140-VG | 1,500 | 1.801 | 1,725 | 0.83 | 92 | 1 | 115/60/1 | OP | 1725 | 1 | 16 |

*NEC FLA - Based on table 430.250 or 430.248 of National Electrical Code 2020. Actual motor FLA may vary for sizing thermal overload, consult factory"

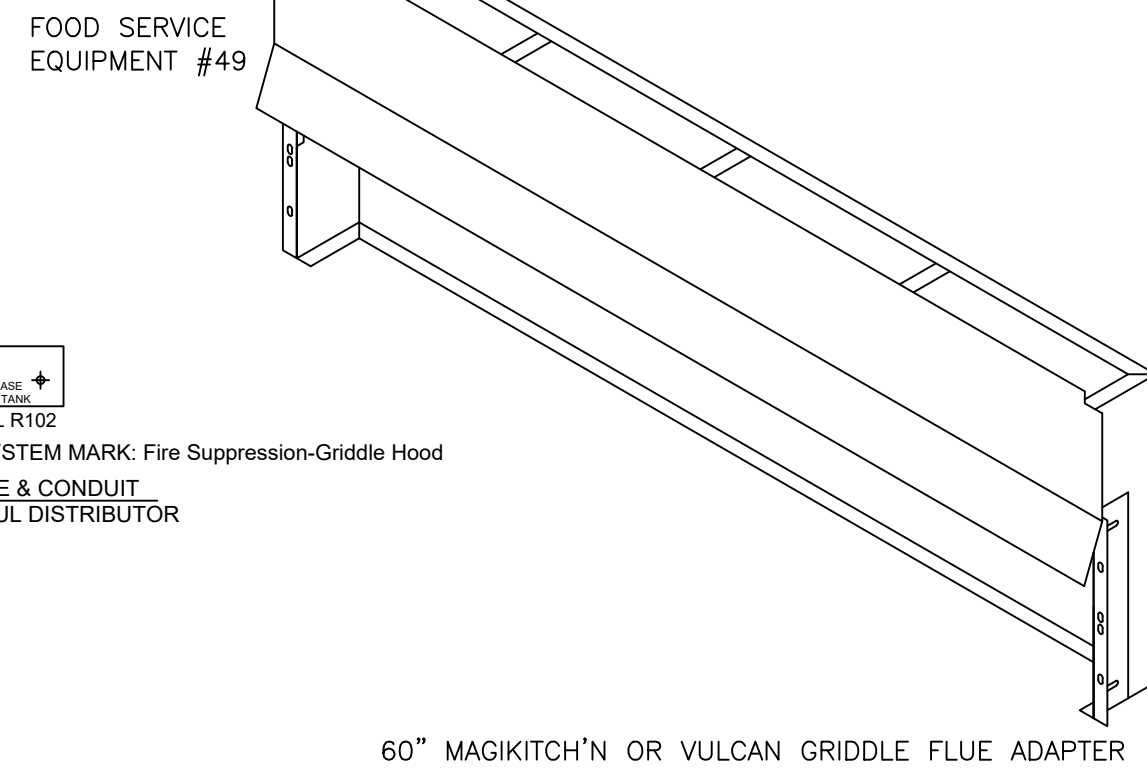
PRV-2 Griddle Fan : SELECTED OPTIONS AND ACCESSORIES

One piece fully welded windband
 Tapered bushing wheel hub
 Breather tube outlet area min. 4.4 sq. in. (sizes 99-480), 2.0 sq. in. (sizes 60-95)
 Min. windband material thickness: 0.051" aluminum (060-240), 0.064" aluminum (240HP, 240XP), 0.080" aluminum (sizes 300-480)
 Larger Curb Cap Size - 26 Square
 UL/cUL 705 Listed - Supplement SC - "Power Ventilators for Restaurant Exh. Appliances" (Formerly UL 762)
 Switch, NEMA-3R, Toggle,
 Hinge, Factory Installed
 High Temp Curb Seal Rated for Continuous Duty at 1500 F (Factory Attached)
 Grease Trap (PN 475538)
 Clean-out Port - Factory Installed
 Conduit Chase Qty 1



MARK: Griddle Hood - SECTION 1 PLAN VIEW

MUST USE WITH MAGIKITCH'N MODEL MKG-C-60 OR VULCAN MODEL VIG60-R3



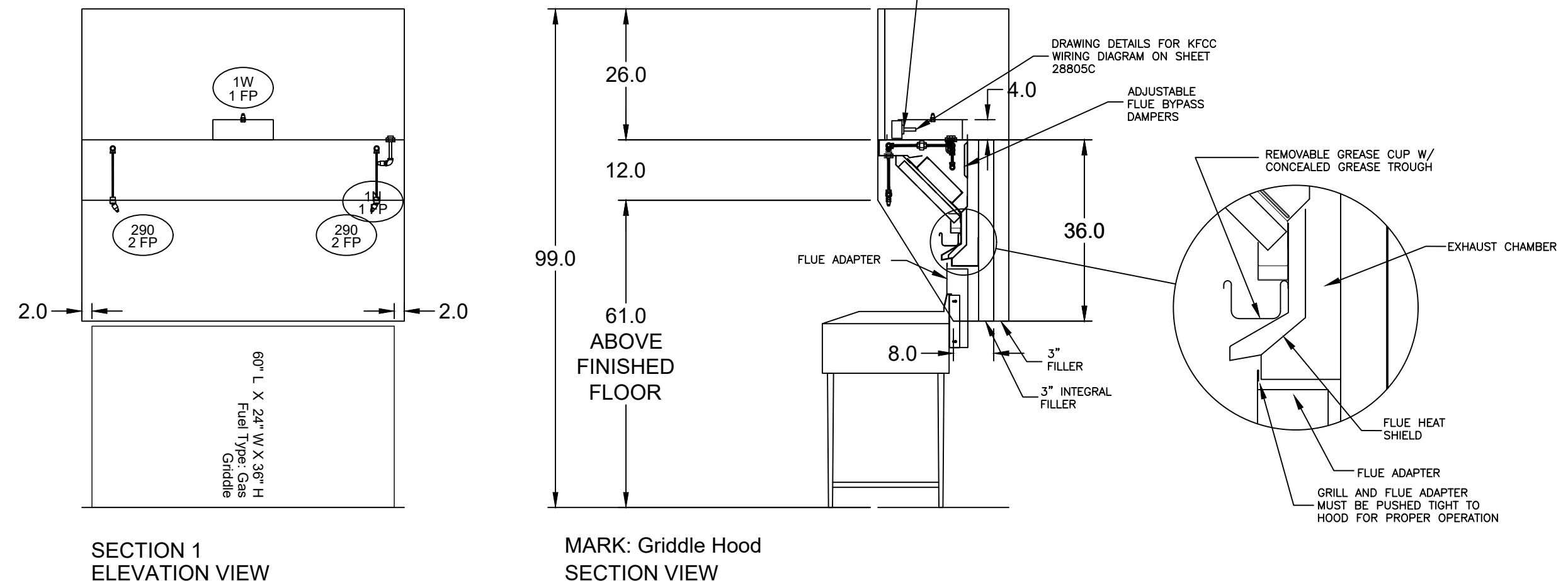
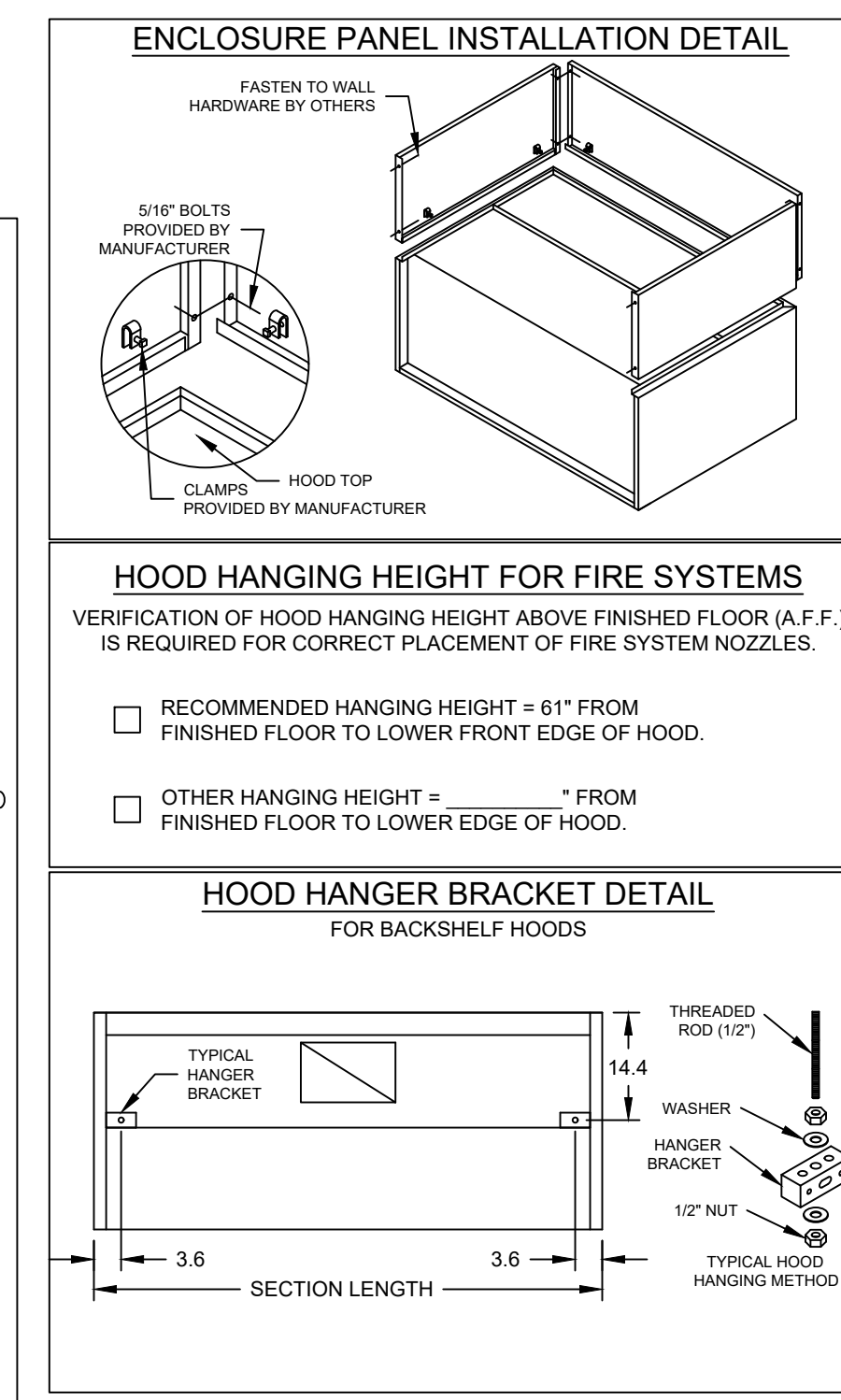
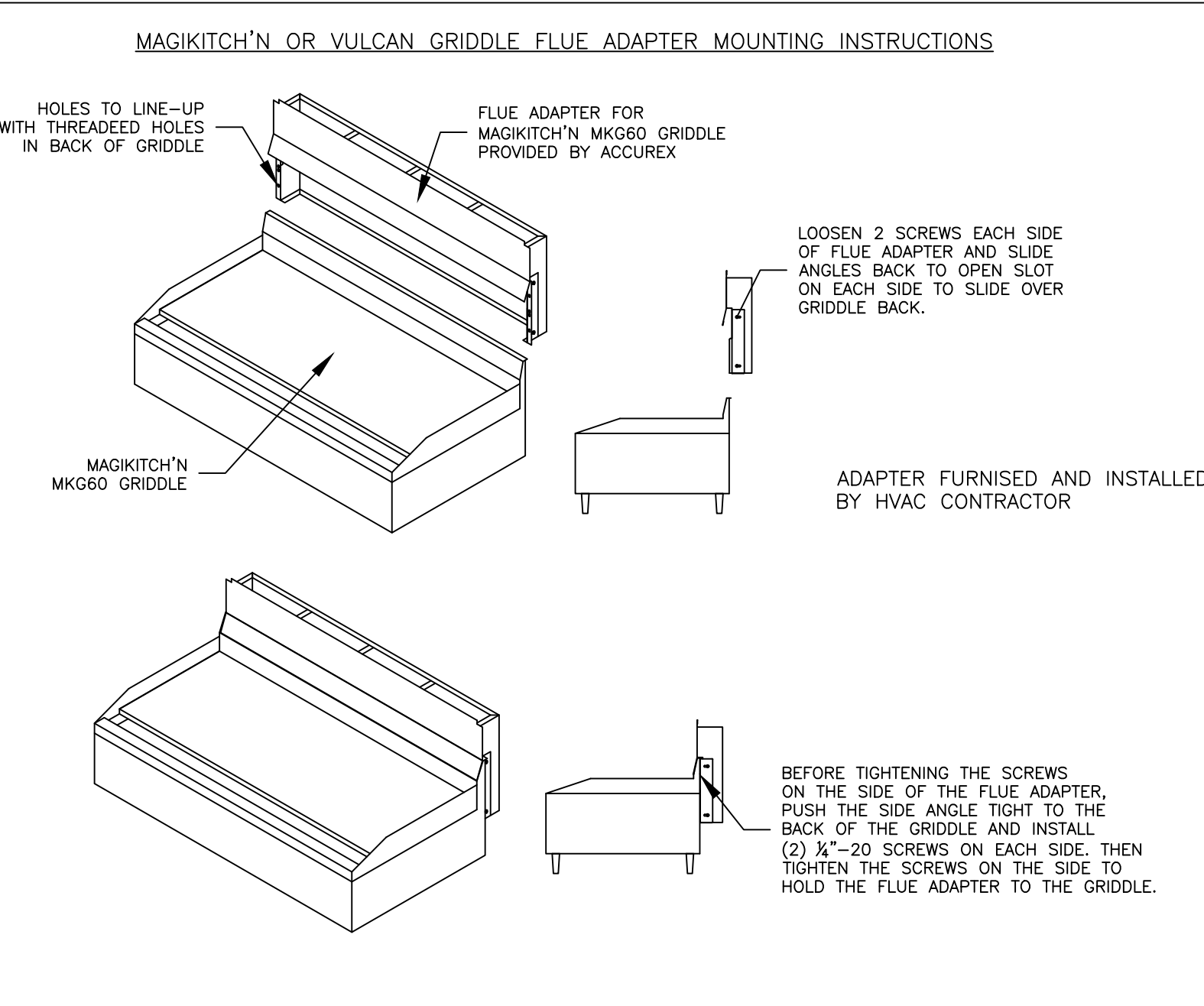
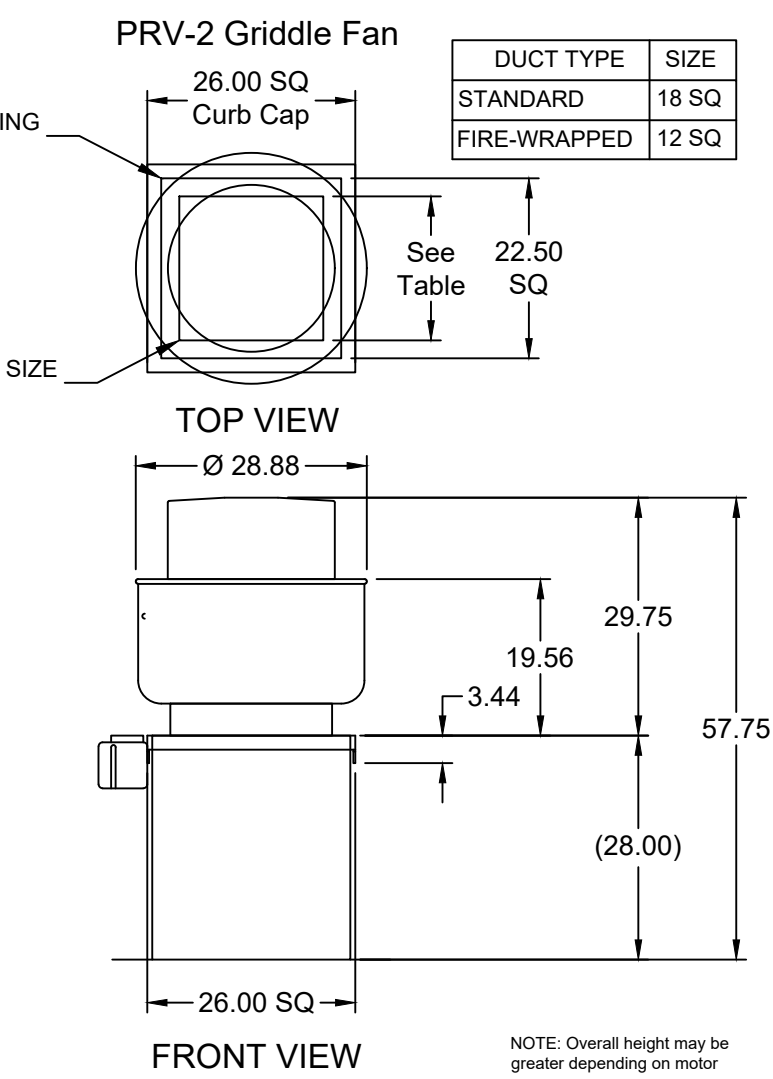
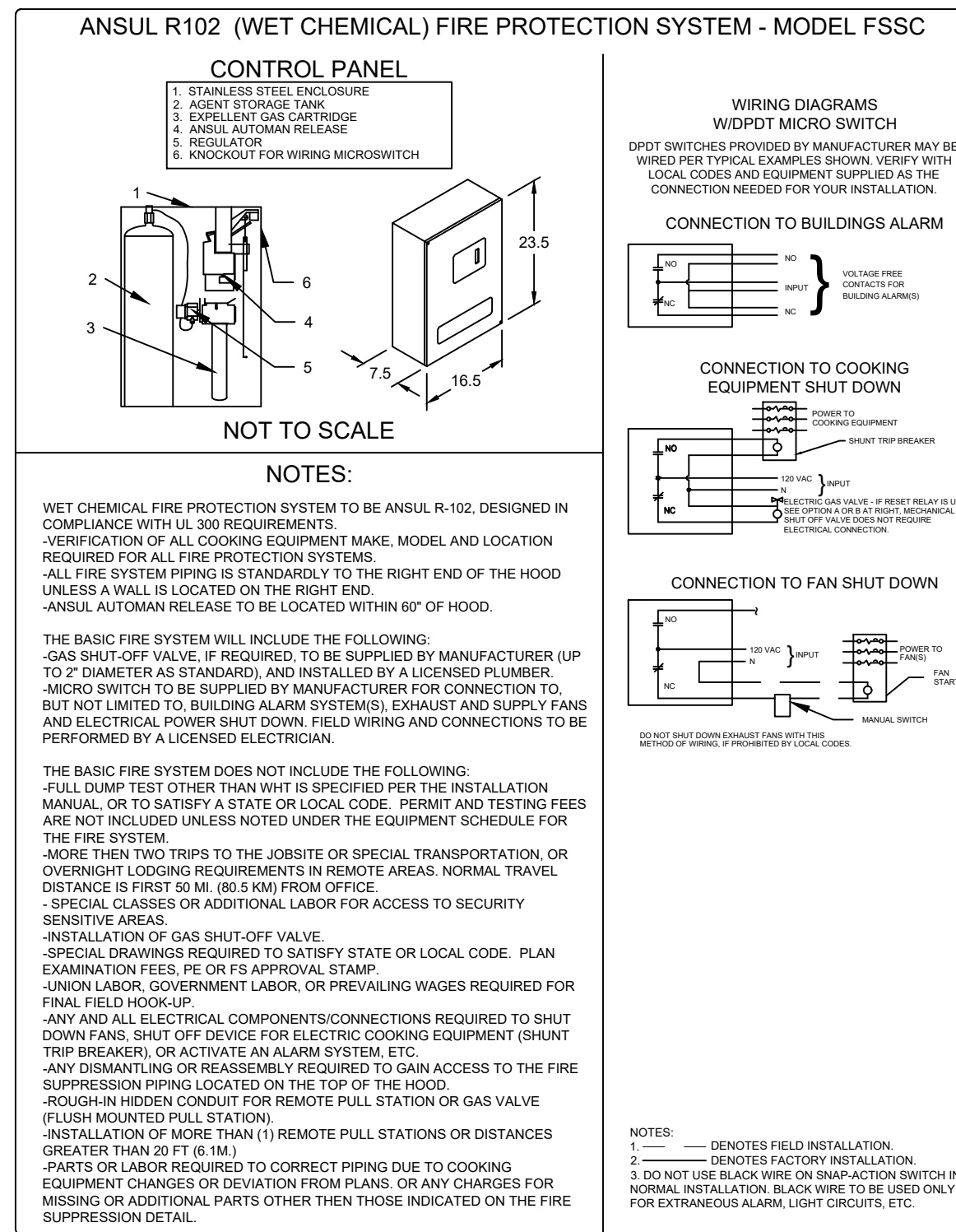
60" MAGIKITCH'N OR VULCAN GRIDDLE FLUE ADAPTER

FIRE SYSTEM INFORMATION

| MARK | MODEL | LOCATION | FLOW POINTS | | SUPPLY LINE | DETECTION | MARK(S) PROTECTED BY FIRE SYSTEM |
|-------------------------------|--------------------------|----------------|-------------|--------------|-------------|--------------|----------------------------------|
| | | | HOODS | PCU | | | |
| FIRE SUPPRESSION-GRIDDLE HOOD | ANSUL R-102 WET CHEMICAL | REMOTE MOUNTED | 6 UTILIZED | 11 AVAILABLE | CONTINUOUS | FUSIBLE LINK | GRIDDLE HOOD SECTION 1 |

FIRE SYSTEM OPTIONS AND ACCESSORIES

FULL INSTALLATION (INCLUDES PRE-PIPED HOOD(S) WITH DETECTION AND FACTORY COORDINATED INSTALL)
 CHROME SLEEVES FOR FACTORY PROVIDED APPLIANCES DROPS - INCLUDED
 METAL BLOW-OFF CAPS - INCLUDED
 HOOD SUPPRESSION AGENT - INCLUDED - 3 GAL. - ((1) 3.0 TANK(S))
 REMOTE PULL STATION - STANDARD - INSTALLATION AT SINGLE POINT OF EGRESS



ACCUREX

CULVERS - METRO L 2021 (S)
 GRIDDLE HOOD
 PRV-2 GRIDDLE FAN
 FIRE SUPPRESSION-GRIDDLE HOOD

ACCUREX - WI, IA
 PHILLIP KRAFT
 PHILLIP.KRAFT@ACCUREX.COM
 262-227-7865

© 2024

NEW CULVER'S RESTAURANT
 500 Mathis Mill Road
 Albertville, AL 35951
 County of MARSHALL

OWNER:
 S & L PROPERTIES ALBERTVILLE LLC
 2651 Kirling Court
 Portage, WI 53901
 Jeff Liegel, Realty Manager / Member
 605-742-2893

OLLMANN ASSOCIATES ARCHITECTS, P.C.
 200 South State Street
 Belvidere, Illinois 61008
 815-544-7790 Phone
 © OAA. All rights reserved. Any copying, transmission or disclosure subject to OAA written approval.

GRIDDLE HOOD/EXHAUST
 SCHEDULE & DETAILS

Date: 04-05-2024
 Revision: M202

2024-010

HOOD INFORMATION

| HOOD NO. | MARK | MODEL | HOOD DIMENSIONS (IN.) | | | HOOD CONSTR. | COOKING LOAD / DUTY RATING | EXHAUST | | | | | SUPPLY | | TOTAL WEIGHT LBS. | SECTION LOCATION |
|----------|------------|-----------|-----------------------|-----------------|-------------------|-----------------------|----------------------------|-----------|-----------|----|------|---------|--------|--|-------------------|------------------|
| | | | LENGTH | WIDTH | HEIGHT | | | TOTAL CFM | COLLAR(S) | | | MUA CFM | AC CFM | | | |
| 1 | FRYER HOOD | XXEP-83-S | 83 | TOP 23 BOT 3 | FRT 12 BACK 36 | 430 SS W/HERE EXPOSED | MEDIUM | 1500 | 12 | 12 | 1500 | 0.518 | | | 169 | SINGLE |

HOOD INFORMATION

| HOOD NO. | MARK | LIGHTING DETAILS | | | GREASE FILTRATION DETAILS | | | UTILITY CABINET(S) | | | | | |
|----------|------------|------------------|-----|--------------|----------------------------------|-----|------------|--------------------|-------------|----------|------|-------|-----------|
| | | FIXTURE TYPE | QTY | FOOT CANDLES | TYPE / MODEL | QTY | SIZE (IN.) | LOCATION | FIRE SYSTEM | CONTROLS | SIZE | MODEL | INTERFACE |
| 1 | FRYER HOOD | | | | X-TRACTOR (SPARK ARRESTOR INCL.) | 5 | 16 | | | | | | |
| | | | | | STAINLESS STEEL | 0 | 20 | | | | | | |

HOOD OPTIONS

UL 710 LISTED W/ OUT EXHAUST FIRE DAMPER - UL #R25625
 BACK NON-INTEGRAL AIR SPACE - 3 IN WIDE
 26 IN HIGH CEILING ENCLOSURES - FRONT LEFT RIGHT - FIELD INSTALLED
 FACTORY MOUNTED EXHAUST COLLAR(S)
 PERFORMANCE ENHANCING LIP (PEL) TECHNOLOGY
 STANDING SEAM CONSTRUCTION FOR SUPERIOR STRENGTH

SPECIAL DESIGN REQUESTS

SDR #K1100559 - NEW PITCO 4L FRYER FLUE BYPASS SYSTEM
 SDR #K1700974 - CULVERS 4VAT 2FIRE PROCESS - FRYER HOOD
 SDR #K2000140 - IF FRYMASTER FRYER FLUE BYPASS

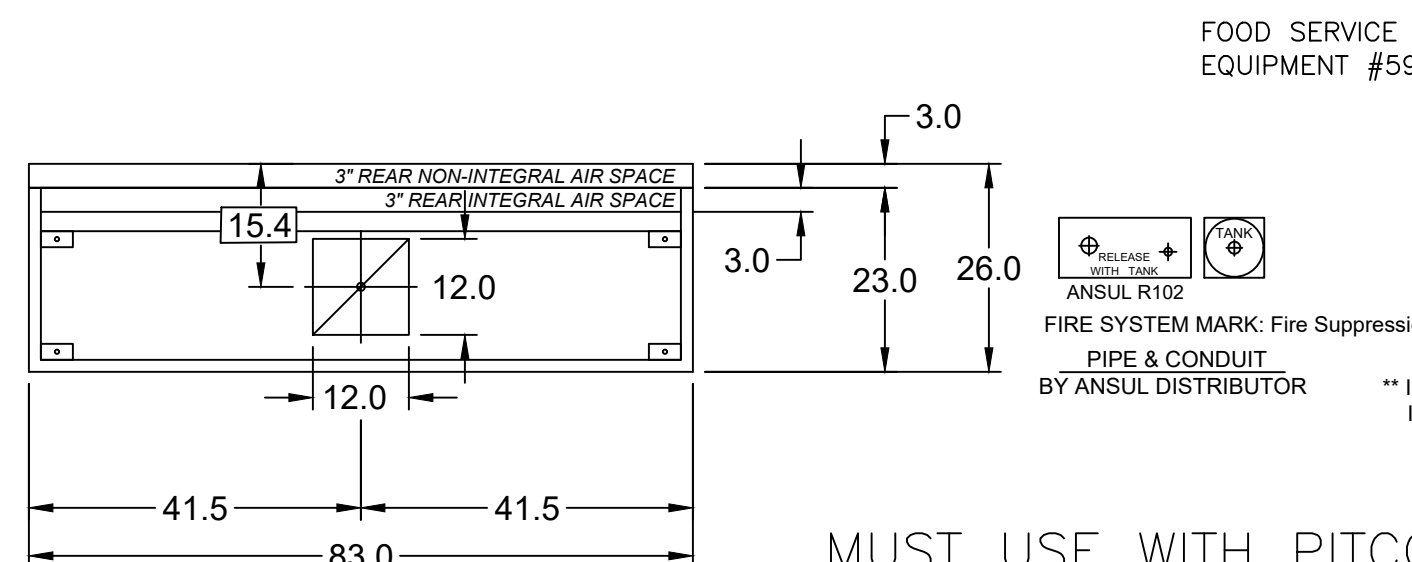
Direct Drive Upblast Centrifugal Roof Exhaust Fan

| MARK INFORMATION | | FAN INFORMATION | | | | MOTOR INFORMATION | | | | | | | |
|------------------|-----------------|-----------------|--------------|---------------------------|---------|----------------------|--------------|-----------|----------|-----------|-----------|----------|----------|
| QTY | MARK | MODEL | VOLUME (CFM) | TOTAL EXTERNAL SP (IN WG) | FAN RPM | OPERATING POWER (HP) | WEIGHT (LB.) | SIZE (HP) | V/C/P | ENCLOSURE | MOTOR RPM | WINDINGS | NEC FLA* |
| 1 | PRV-3 Fryer Fan | XCUE-140-VG | 1,500 | 1 | 1,365 | 0.46 | 92 | 1 | 115/60/1 | OP | 1725 | 1 | 16 |

*NEC FLA - Based on table 430.250 or 430.248 of National Electrical Code 2020. Actual motor FLA may vary for sizing thermal overload, consult factory"

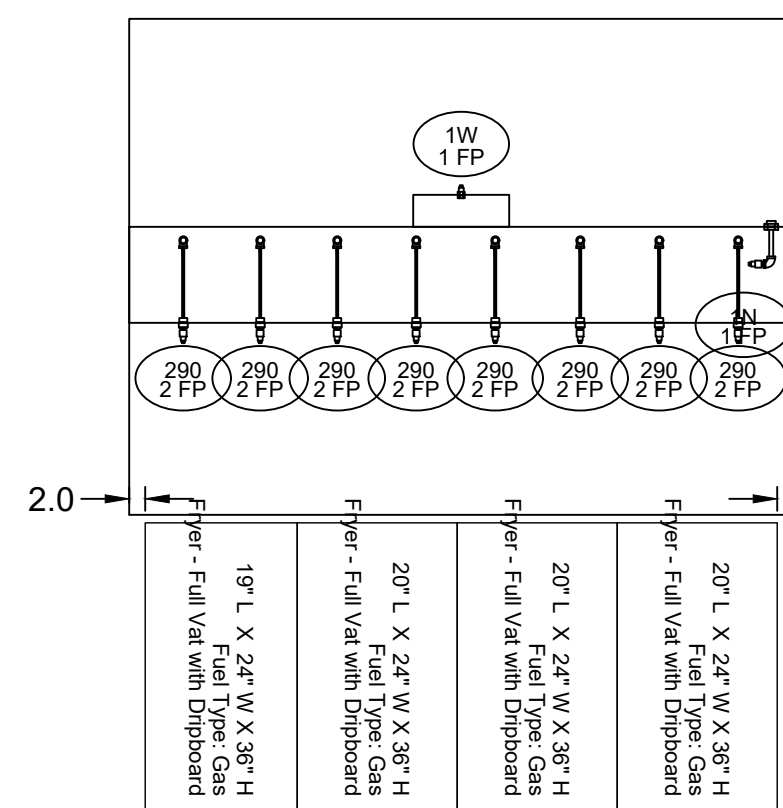
PRV-3 Fryer Fan : SELECTED OPTIONS AND ACCESSORIES

One piece fully welded windband
 Tapered bushing wheel hub
 Breather tube outlet area min. 4.4 sq. in. (sizes 99-480), 2.0 sq. in. (sizes 60-95)
 Min. windband material thickness: 0.051" aluminum (060-240), 0.064" aluminum (240HP, 240XP), 0.080" aluminum (sizes 300-480)
 Larger Curb Cap Size - 26 Square
 UL/cUL 705 Listed - Supplement SC - "Power Ventilators for Restaurant Exh. Appliances" (Formerly UL 762)
 Switch, NEMA-3R, Toggle,
 Hinge, Factory Installed
 High Temp Curb Seal Rated for Continuous Duty at 1500 F (Factory Attached)
 Grease Trap (PN 475538)
 Clean-out Port - Factory Installed
 Conduit Chase Qty 1

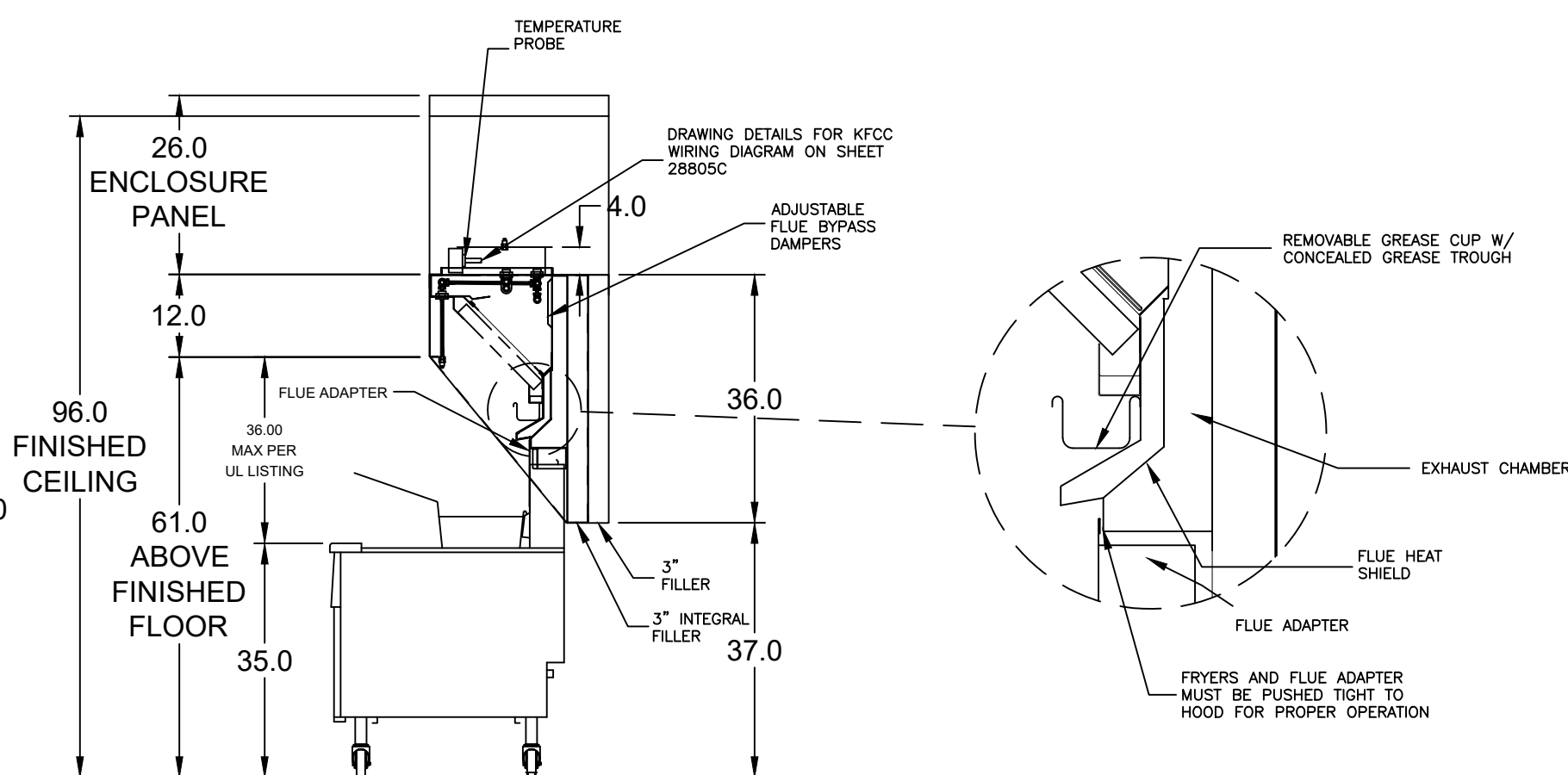


MARK: Fryer Hood
PLAN VIEW

MUST USE WITH PITCO
 MODEL CU-SSH60W/WR 4VAT FRYER
 IF FRYMASTER MODEL 41814GF-CFS
 IS BEING USED, NOTIFY ACCUREX REP



SECTION 1
ELEVATION VIEW



MARK: ITEM #59
SECTION VIEW

PITCO MODEL CU-SSH60W/WR 4-VAT FRYER FLUE ADAPTER
 OR FRYMASTER MODEL 41814GF-CFS

FIRE SYSTEM INFORMATION

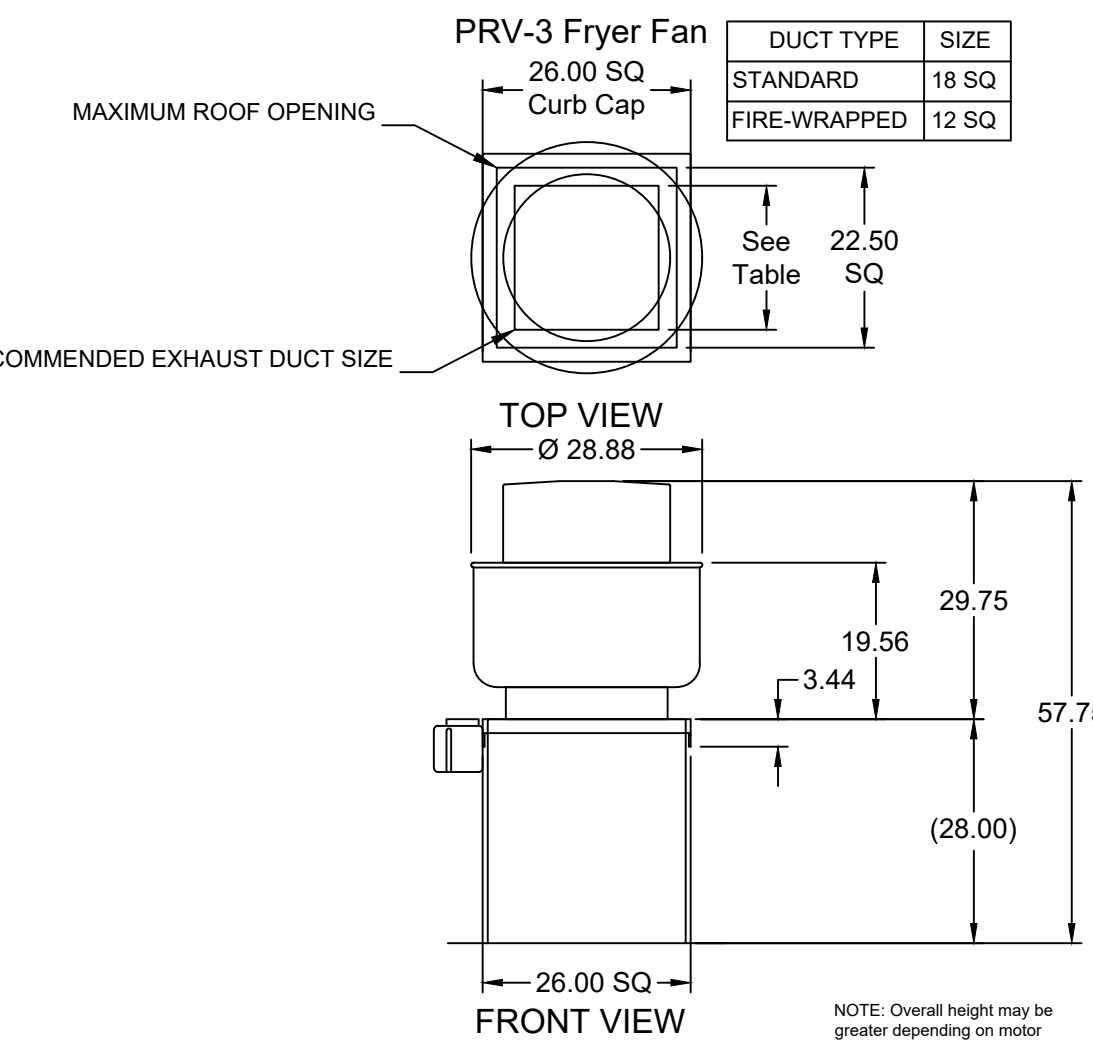
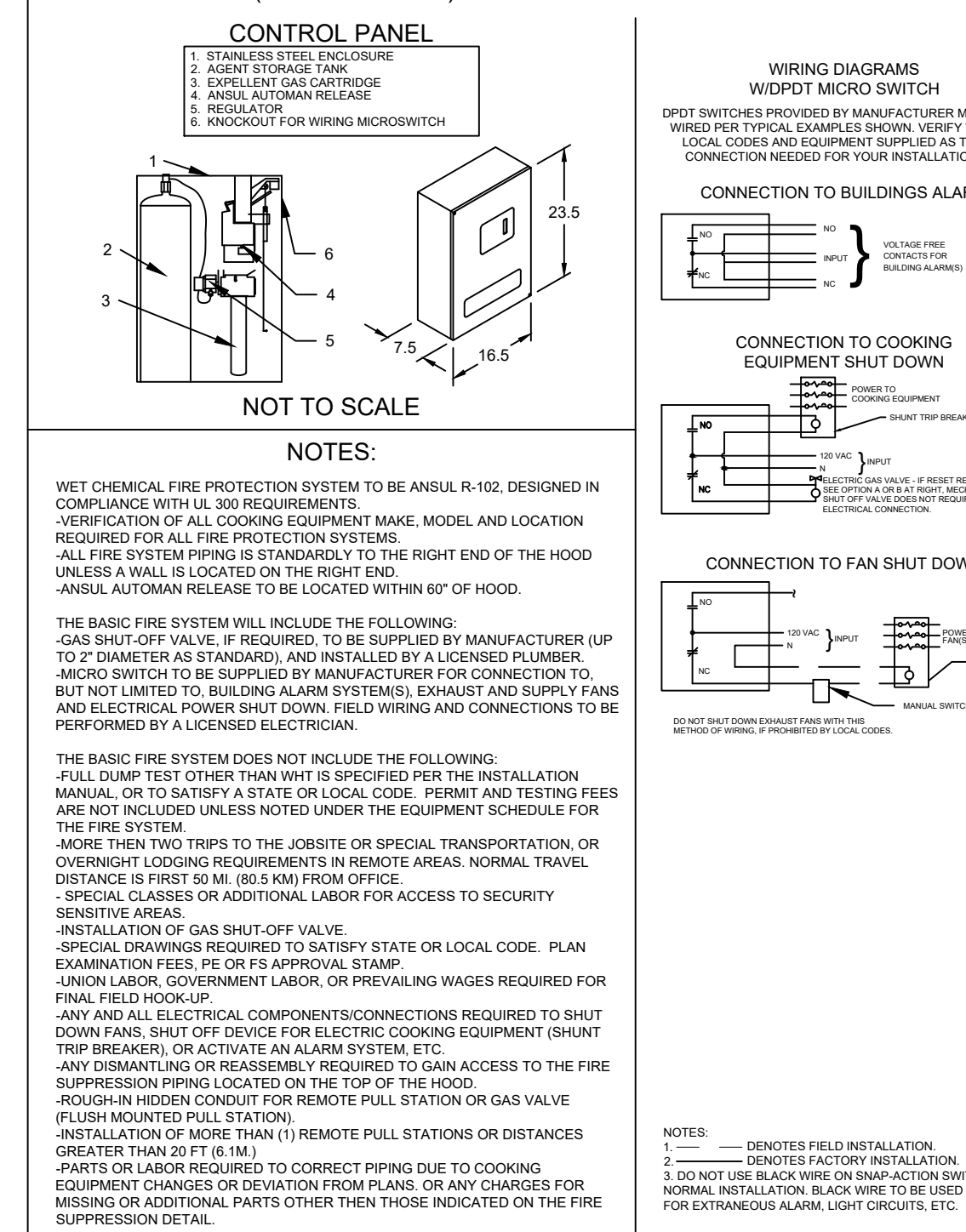
| MARK | MODEL | LOCATION | FLOW POINTS | | SUPPLY LINE | DETECTION | MARK(S) PROTECTED BY FIRE SYSTEM |
|-----------------------------|--------------------------|----------------|-------------|--------------|-------------|--------------|----------------------------------|
| | | | HOODS | PCU | | | |
| FIRE SUPPRESSION-FRYER HOOD | ANSUL R-102 WET CHEMICAL | REMOTE MOUNTED | 18 UTILIZED | 22 AVAILABLE | CONTINUOUS | FUSIBLE LINK | FRYER HOOD SECTION 1 |

FIRE SYSTEM OPTIONS AND ACCESSORIES

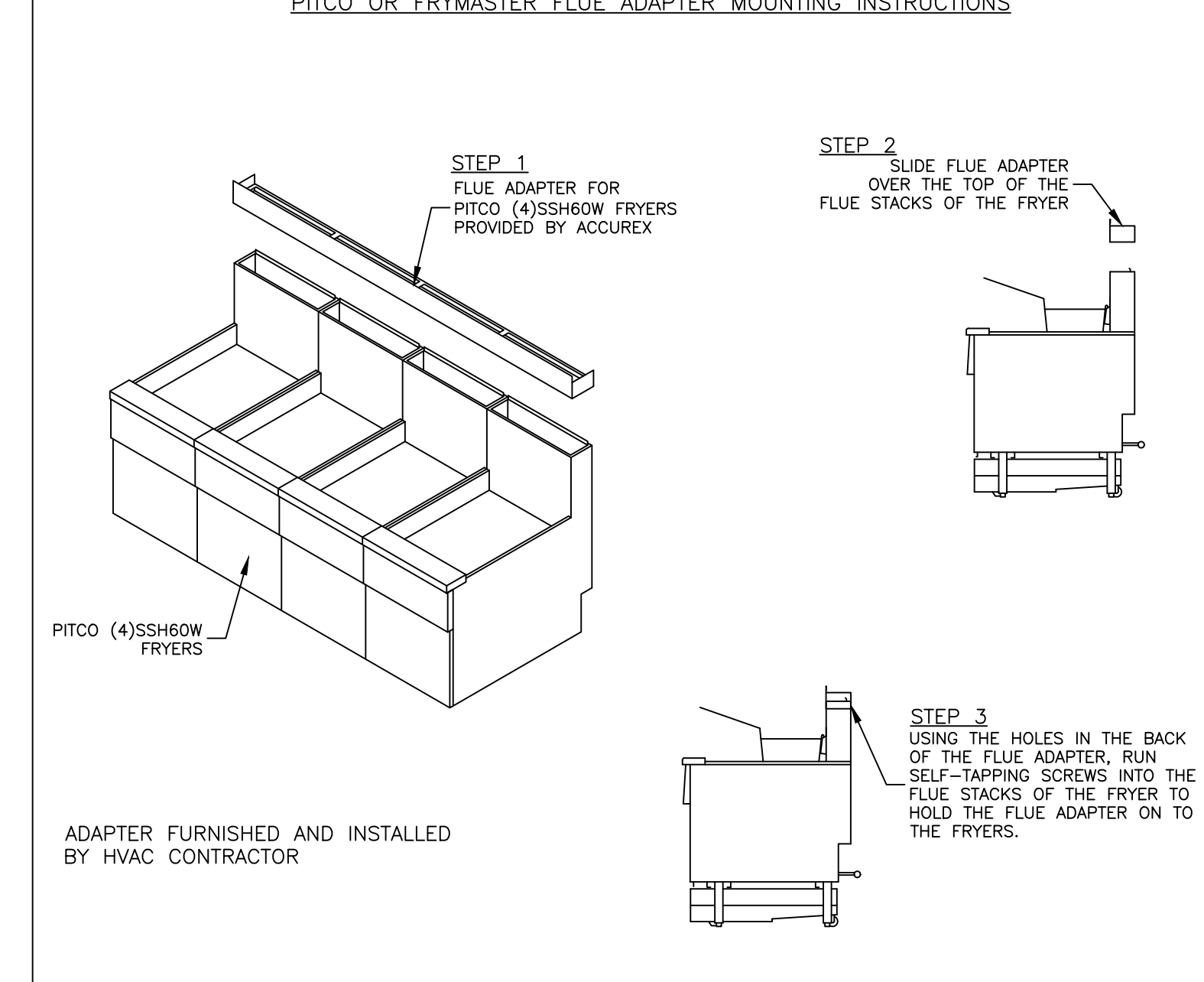
FULL INSTALLATION (INCLUDES PRE-PIPED HOOD(S) WITH DETECTION AND FACTORY COORDINATED INSTALL)
 CHROME SLEEVES FOR FACTORY PROVIDED APPLIANCES DROPS - INCLUDED
 METAL BLOW-OFF CAPS - INCLUDED
 PRE-TEST - INCLUDED

HOOD SUPPRESSION AGENT - INCLUDED - 6 GAL. - [(2) 3.0 TANK(S)]
 REMOTE PULL STATION - STANDARD - INSTALLATION AT SINGLE POINT OF EGRESS

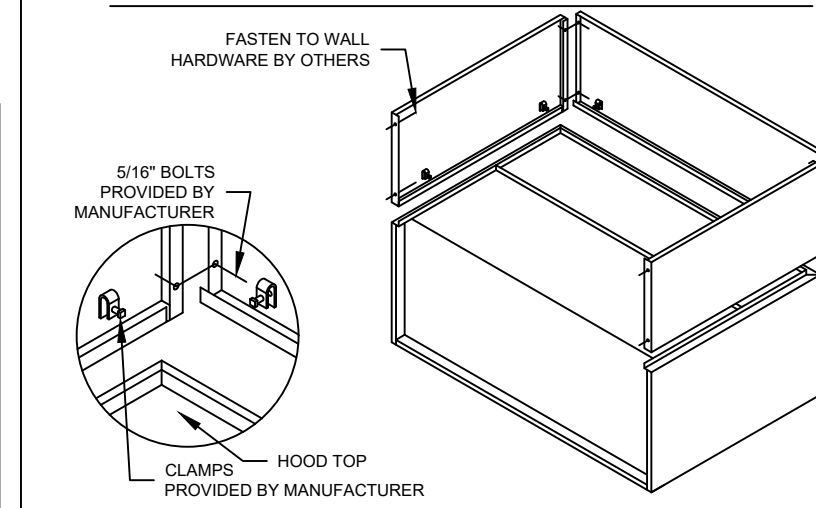
ANSUL R102 (WET CHEMICAL) FIRE PROTECTION SYSTEM - MODEL FSSC



PITCO OR FRYMASTER FLUE ADAPTER MOUNTING INSTRUCTIONS



ENCLOSURE PANEL INSTALLATION DETAIL



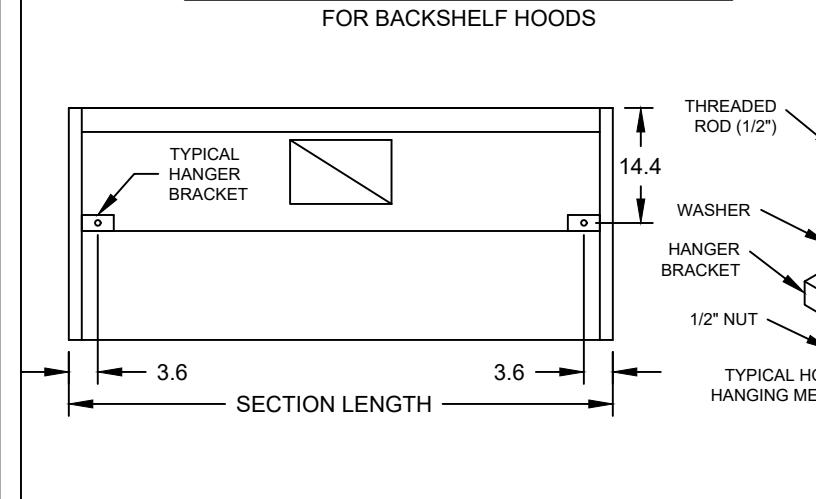
HOOD HANGING HEIGHT FOR FIRE SYSTEMS

VERIFICATION OF HOOD HANGING HEIGHT ABOVE FINISHED FLOOR (A.F.F.) IS REQUIRED FOR CORRECT PLACEMENT OF FIRE SYSTEM NOZZLES.

RECOMMENDED HANGING HEIGHT = 61" FROM FINISHED FLOOR TO LOWER FRONT EDGE OF HOOD.

OTHER HANGING HEIGHT = * FROM FINISHED FLOOR TO LOWER EDGE OF HOOD.

HOOD HANGER BRACKET DETAIL FOR BACKSHELF HOODS



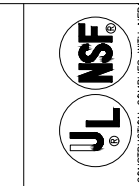
ACCUREX

CULVERS - METRO L 2021 (S)

PROJECT / 3/20/2024

ACCUREX - WI, IA
 PHILLIP KRAFT
 PHILLIP.KRAFT@ACCUREX.COM
 262-227-7865

FRYER HOOD
 PRV-3 FRYER FAN
 FIRE SUPPRESSION-FRYER HOOD



© 2024

NEW CULVER'S RESTAURANT
 500 Mathis Mill Road
 Albertville, AL 35951
 County of MARSHALL

OWNER:
 S & L PROPERTIES ALBERTVILLE LLC
 2651 Kirling Court
 Portage, WI 53901
 Jeff Liegel, Realty Manager / Member
 608-742-2893

OWNER:
 OLLMANN ASSOCIATES ARCHITECTS, P.C.
 200 South State Street
 Belvidere, Illinois 61008
 815-544-7190 Phone
 © OAA. All rights reserved. Any copying, transmission or disclosure subject to OAA written approval.

Revision:
 Date: 04-05-2024

2024-010
 M203

Ceiling Exhaust Fan

| MARK INFORMATION | | FAN INFORMATION | | | | | | MOTOR INFORMATION | | | | |
|------------------|-------|-----------------|--------------|---------------------------|---------|----------------------|--------------|-------------------|----------|-----------|-----------|----------|
| QTY | MARK | MODEL | VOLUME (CFM) | TOTAL EXTERNAL SP (IN WG) | FAN RPM | OPERATING POWER (HP) | WEIGHT (LB.) | SIZE (HP) | V/C/P | ENCLOSURE | MOTOR RPM | WINDINGS |
| 1 | EF-1A | XCR-B80 | 75 | 0.125 | 881 | 0.01 | 10 | 0 | 115/60/1 | OP | 900 | 1 |

EF-1A : SELECTED OPTIONS AND ACCESSORIES

UL/cUL 507 Listed - Electric Fan
 Solid State Speed Control, 6 Amp, Mounted and Wired Internally
 Round Hooded Wall Cap, (PN: WC-6) Shipped Loose
 Round Duct Connection
 Adjustable easy installation mounting bracket
 Standard Grille
 Polypropylene Wheel Material
 Can Be Used to Comply with: ASHRAE 62.2 and Washington State Energy Code

SPECIAL DESIGN REQUESTS

(1)-WC-4 Wall Cap (F1600858)

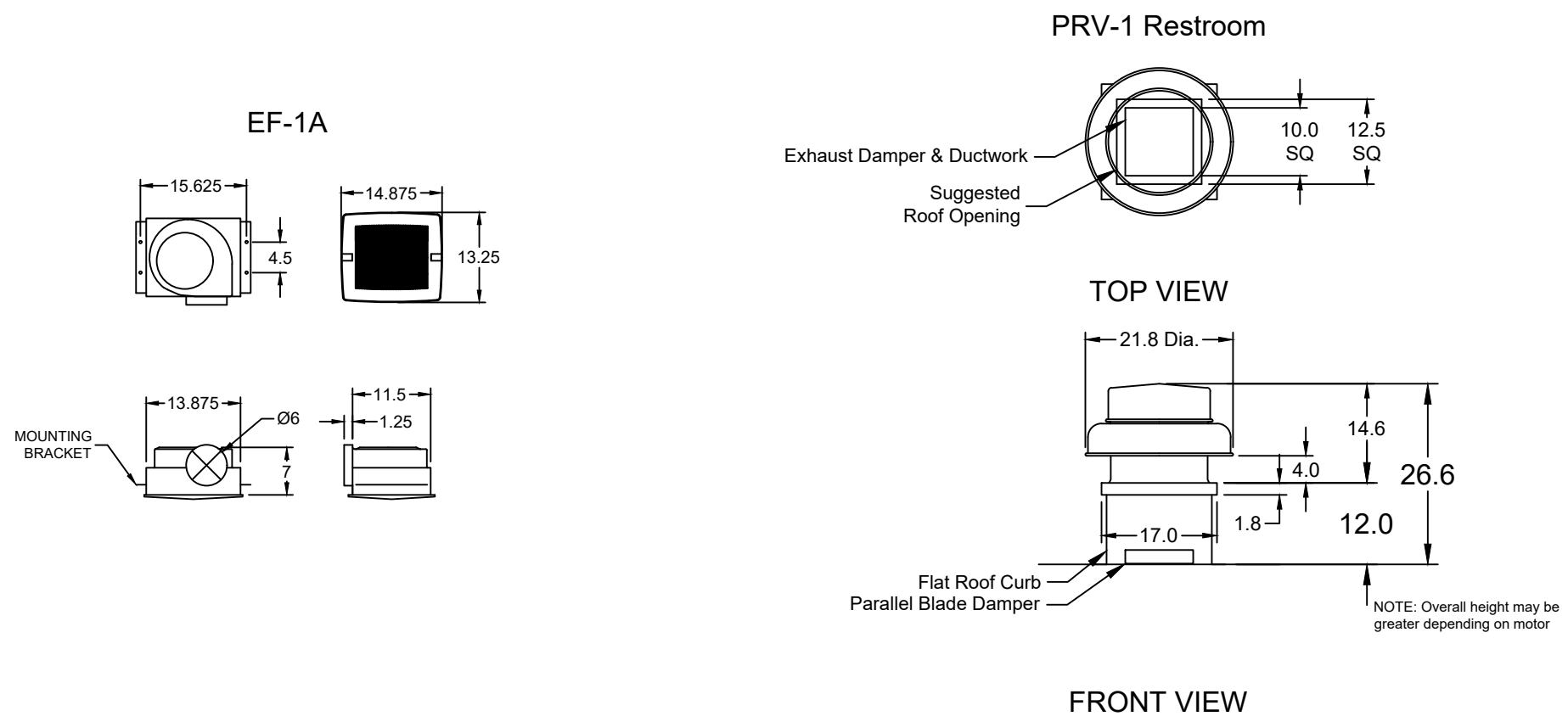
Direct Drive Centrifugal Roof Exhaust Fan

| MARK INFORMATION | | FAN INFORMATION | | | | | | MOTOR INFORMATION | | | | | |
|------------------|----------------|-----------------|--------------|---------------------------|---------|----------------------|--------------|-------------------|----------|-----------|-----------|----------|----------|
| QTY | MARK | MODEL | VOLUME (CFM) | TOTAL EXTERNAL SP (IN WG) | FAN RPM | OPERATING POWER (HP) | WEIGHT (LB.) | SIZE (HP) | V/C/P | ENCLOSURE | MOTOR RPM | WINDINGS | NEC FLA* |
| 1 | PRV-1 Restroom | XRED-090-VG | 400 | 0.5 | 1,466 | 0.06 | 40 | 0.1 | 115/60/1 | TN | 1725 | 1 | NA |

*NEC FLA - Based on table 430.250 or 430.248 of National Electrical Code 2020. Actual motor FLA may vary for sizing thermal overload, consult factory

PRV-1 Restroom : SELECTED OPTIONS AND ACCESSORIES

Standard Curb Cap Size - 17 Square
 UL/cUL 705 Listed - "Power Ventilators"
 Switch, NEMA-1, Toggle, Shipped with Unit
 Hinge, Factory Installed
 Damper Shipped Loose, BD-100-PB-10X10, Gravity Operated, Not Coated
 Birdscreen: Galvanized, nom. 84% Free Area
 Composite Wheel Material



CONTROL INFORMATION

| MARK | ELECTRICAL CONTROL PACKAGE | | USER INTERFACE | |
|----------|----------------------------|----------------------|------------------------|------------|
| | MODEL | LOCATION | TYPE | LOCATION |
| CONTROLS | XKC-CV-S-22-2-1-0 | SHIP LOOSE ENCLOSURE | FULL COLOR TOUCHSCREEN | SHIP LOOSE |

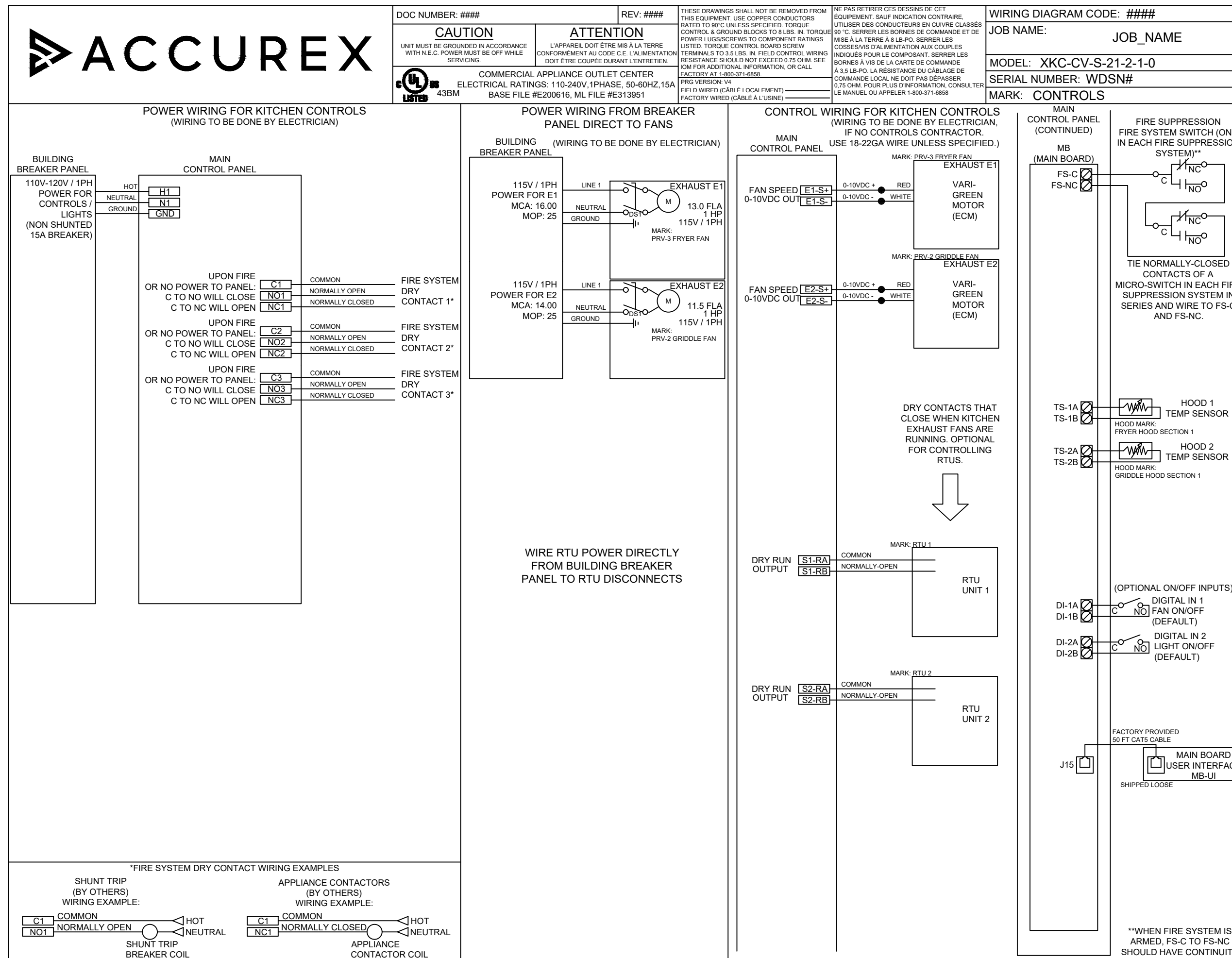
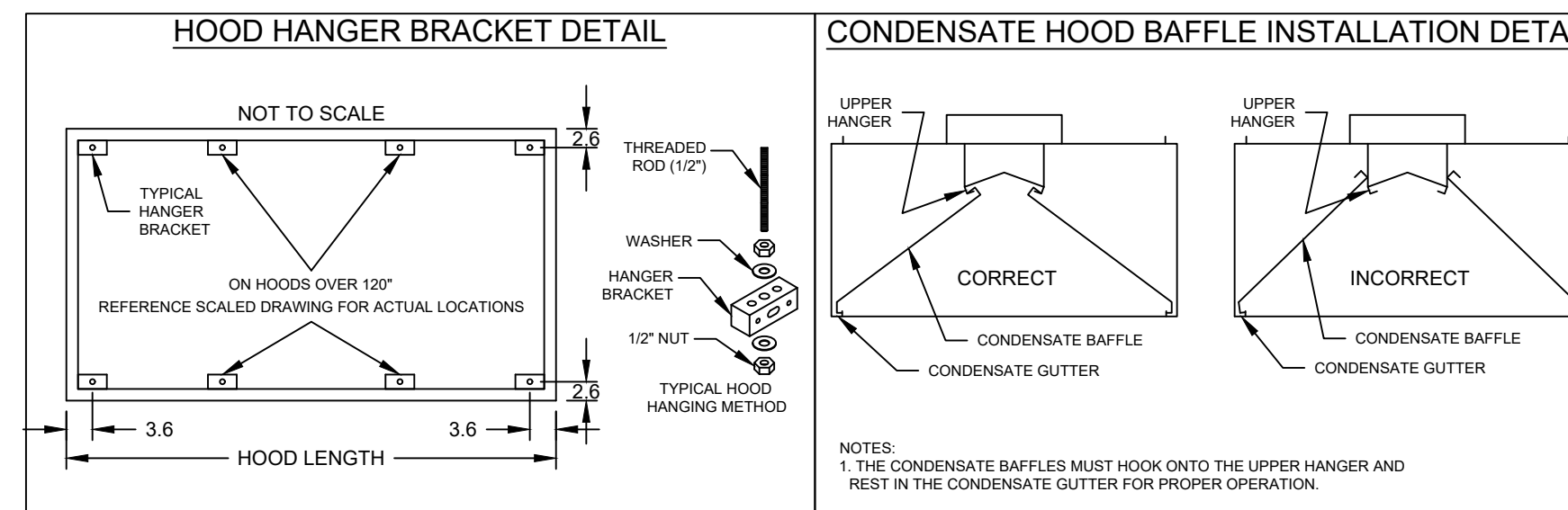
| FANS CONTROLLED | | | | | | | | | | | |
|-----------------|---------|-----|-------------------|------|------|----------|------------|-------|-------------|------------------------|--------------|
| FAN # | TYPE | FAN | FAN MARK | ZONE | CFM | MOTOR HP | MOTOR VOLT | CYCLE | MOTOR PHASE | MOTOR STARTER IN PANEL | VFD IN PANEL |
| 1 | SUPPLY | S1 | RTU-1 | 1 | 1500 | 1 | 208 | 60 | 3 | NO | NO |
| 2 | SUPPLY | S2 | RTU-2 | 2 | 1500 | 1 | 208 | 60 | 3 | NO | NO |
| 3 | EXHAUST | E1 | PRV-2 GRIDDLE FAN | 2 | 1497 | 1 | 115 | 60 | 1 | NO | NO |
| 4 | EXHAUST | E2 | PRV-3 FRYER FAN | 1 | 1500 | 1 | 115 | 60 | 1 | NO | NO |

CONTROL FEATURES

TEMP SENSORS (FACTORY INSTALLED) - QTY. 2
 DRY FIRE CONTACTS - QTY. 2
 EXHAUST MAX DURING FIRE
 SUPPLY OFF DURING FIRE

SPECIAL DESIGN REQUESTS

SDR #K2000462 - CULVERS CONTROL PANEL - EXTRA SET OF FIRE CONTACTS - REVISE WIRING DIAGRAMS



CULVERS - METROL 2021 (NC)
 1.27.2023

ITEM 25 CONDENSATE HOOD
 PRV-1 RESTROOM
 CONTROLS

PROJECT
 3/20/2024

MARK
 ACCUREX - W/LA
 PHILLIP KRAFT
 PHILLIP.KRAFT@ACCUREX.COM
 262-227-7865

OWNER:
 S & L PROPERTIES ALBERTVILLE LLC
 2651 Kirling Court
 Portage, WI 53901
 Jeff Liegel, Realty Manager / Member
 608-742-2893

OWNER:
 OLLMANN ASSOCIATES ARCHITECTS, P.C.
 200 South State Street
 Belvidere, Illinois 61008
 815-544-7790 Phone
 © OAA. All rights reserved. any copying, transmission or disclosure subject to OAA written approval.

ACCUREX

FAN SCHEDULE & DETAILS

Date: 04-05-2024
 Revision:

2024-010

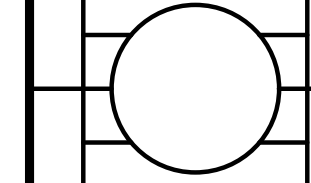
M204

NEW CULVER'S RESTAURANT
 500 Mathis Mill Road
 Albertville, AL 35951
 County of MARSHALL

Culver's
 Culver Franchising System, Inc.
 1240 Water Street
 Prairie du Sac, WI 53578
 608-843-7880

OWNER:
 S & L PROPERTIES ALBERTVILLE LLC
 2651 Kirling Court
 Portage, WI 53901
 Jeff Liegel, Realty Manager / Member
 608-742-2893

OWNER:
 OLLMANN ASSOCIATES ARCHITECTS, P.C.
 200 South State Street
 Belvidere, Illinois 61008
 815-544-7790 Phone
 © OAA. All rights reserved. any copying, transmission or disclosure subject to OAA written approval.



FAN SCHEDULE & DETAILS

Date: 04-05-2024
 Revision:

2024-010

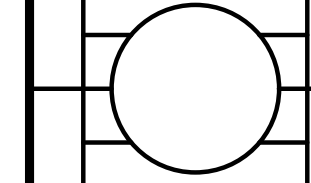
M204

NEW CULVER'S RESTAURANT
 500 Mathis Mill Road
 Albertville, AL 35951
 County of MARSHALL

Culver's
 Culver Franchising System, Inc.
 1240 Water Street
 Prairie du Sac, WI 53578
 608-843-7880

OWNER:
 S & L PROPERTIES ALBERTVILLE LLC
 2651 Kirling Court
 Portage, WI 53901
 Jeff Liegel, Realty Manager / Member
 608-742-2893

OWNER:
 OLLMANN ASSOCIATES ARCHITECTS, P.C.
 200 South State Street
 Belvidere, Illinois 61008
 815-544-7790 Phone
 © OAA. All rights reserved. any copying, transmission or disclosure subject to OAA written approval.



FAN SCHEDULE & DETAILS

Date: 04-05-2024
 Revision:

2024-010

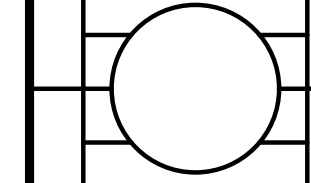
M204

NEW CULVER'S RESTAURANT
 500 Mathis Mill Road
 Albertville, AL 35951
 County of MARSHALL

Culver's
 Culver Franchising System, Inc.
 1240 Water Street
 Prairie du Sac, WI 53578
 608-843-7880

OWNER:
 S & L PROPERTIES ALBERTVILLE LLC
 2651 Kirling Court
 Portage, WI 53901
 Jeff Liegel, Realty Manager / Member
 608-742-2893

OWNER:
 OLLMANN ASSOCIATES ARCHITECTS, P.C.
 200 South State Street
 Belvidere, Illinois 61008
 815-544-7790 Phone
 © OAA. All rights reserved. any copying, transmission or disclosure subject to OAA written approval.



FAN SCHEDULE & DETAILS

Date: 04-05-2024
 Revision:

2024-010

M204