

SECTION 15732 - PACKAGED ROOFTOP AIR-CONDITIONING UNITS

PART 1 - GENERAL

1.1 SECTION REQUIREMENTS

- A. Submittals: Product Data and Shop Drawings.
B. Comply with ASHRAE 15.
C. EER: Equal to or greater than prescribed by the energy code adopted by the Authority Having Jurisdiction.
D. Warranties: Submit a written warranty, signed by the manufacturer, agreeing to the repair or replacement of components that fail within 5 years of Substantial Completion.

PART 2 - PRODUCTS

2.1 PACKAGED UNITS, 5 TO 20 TONS

- A. Factory assembled and tested, consisting of compressors, condensers, evaporator coils, condenser and evaporator fans, refrigeration and temperature controls, filters, and dampers.
1. Refer to Rooftop Heating/Cooling Unit Schedule on drawing M600 for capacities, and manufacturers.
2. Evaporator Fans: Belt or direct driven, forward curved centrifugal.
3. Exhaust/Relief Fans: Direct drive, forward curved centrifugal or propeller.
4. Condenser Fans: Direct drive propeller.
5. Refrigerant Coils: Aluminum fins and copper coil.
6. Compressors: Serviceable hermetic or fully hermetic, with safety controls, hot gas bypass, and timed off controls.
7. Heat Exchangers: Gas fired, with gas controls, electronic ignition, high limit cutout, and forced draft proving switch.
8. Economizer controls (Comparative Enthalpy, 100% capacity).
9. Smoke Detectors: Photoelectric in supply and/or return as called for in schedule on sheet M600.
10. Operating Controls: Two stage heating and two stage cooling on units 7-1/2 tons and over.
11. Roof curb.
12. Control Wiring from T-stat to rooftop unit: Shall be 18ga / 7 conductor, rated for plenum applications.
13. Control Wiring from T-stat to remote sensor: Shall be a separate 18ga / 2 conductor shielded, rated for plenum applications.

PART 3 - EXECUTION

3.1 INSTALLATION

- A. Install units level and plumb and firmly anchored.
B. Connect gas piping to burner with pipe same size as gas train inlet, and provide union with sufficient clearance for burner removal and service.
C. Install ducts to termination in roof mounting frames. Terminate ducts through roof structure.
D. Connect units to wiring systems and to ground.

END OF SECTION 15732

SECTION 15810 - DUCTS AND ACCESSORIES

PART 1 - GENERAL

1.1 SECTION REQUIREMENTS

- A. Submittals: Product Data for fire and smoke dampers.
B. Comply with NFPA 90A for systems serving spaces more than 25,000 cu. ft. in volume or building Types II, IV, and V construction more than 3 stories in height.
C. Comply with NFPA 90B for systems serving spaces in 1 or 2 family dwellings or serving spaces less than 25,000 cu. ft..
D. Comply with NFPA 96, "Ventilation Control and Fire Protection of Commercial Cooking Operations," for kitchen hood ducts.
E. Comply with UL 181 and UL 181A for ducts and closures.
F. Testing, Adjusting, and Balancing Agency Qualifications: AABC certified (to be furnished by Tenant).

PART 2 - PRODUCTS

2.1 DUCTS

- A. Spiral Duct: Spiral Lock Seam, without insulation, G90 galvanized finish, ASTM A-653/924
1. Basis of Design Manufacturers: Lindab SPIROsafe, alternates to the basis of design must be submitted for review.
2. Fittings: Factory produced standing seam construction with internal sealing. Fittings with a major axis of 36" or smaller shall be 20 gauge. Fittings with a major axis of 37"-48" shall be 18 gauge.
B. Galvanized Steel Sheet: Forming steel, ASTM A 653/653M, G90 coating designation.
C. Duct Liner: ASTM C 1071, Type II, with an airstream surface coated with a temperature resistant coating. Thickness: 1-1/2 inch. R-value : 8.
1. Adhesive: ASTM C 916, Type I.
2. Mechanical Fasteners: Galvanized steel pin, length as required to penetrate liner plus a 1/8 inch projection maximum into the airstream.
D. Joint and Seam Tape: Comply with UL 181A.
E. Joint and Seam Sealant: Comply with UL 181A.
F. Rectangular Metal Duct Fabrication: Comply with SMACNA's "HVAC Duct Construction Standard" for metal thickness, reinforcing types and intervals, tie rod applications, and joint types and intervals.

2.2 ACCESSORIES

- A. Volume-Control Dampers: Factory fabricated volume control dampers, complete with required hardware and accessories. Single blade and multiple opposed blade, standard leakage rating, and suitable for horizontal or vertical applications.
B. Fire Dampers: Factory-fabricated fire dampers, complete with required hardware and accessories. UL labeled according to UL 555, "Fire Dampers".
C. Flexible Connectors: Flame retardant or noncombustible fabrics, coatings, and adhesives complying with UL 181, Class 1.
D. Flexible Ducts: Factory fabricated, insulated, round duct, with an outer jacket enclosing 2 inch thick, glass fiber insulation, R-value: 6.0, around a continuous inner liner.

PART 3 - EXECUTION

3.1 INSTALLATION

- A. Duct System Pressure Class: Construct and install each duct system with 2 inch positive and negative duct pressure classifications.
B. Conceal ducts from view in finished and occupied spaces. Except where noted as exposed.
C. Avoid passing through electrical equipment spaces and enclosures.
D. Support and connect metal ducts according to SMACNA's "HVAC Duct Construction Standard".
E. Install duct accessories according to applicable portions of details of construction as shown in SMACNA standards.
F. Install liner and/or insulation on ductwork per the material schedule on sheet M010.
G. Install volume control dampers in lined duct with methods to avoid damage to liner and to avoid erosion of duct liner.
H. Install fire and smoke dampers according to manufacturer's UL approved written instructions.
I. Install fusible links in fire dampers.
J. Provide saddle taps at tees for exposed ductwork.

3.2 TESTING, ADJUSTING, AND BALANCING

- A. The Tenant will supply an independent balance agent to to balance and adjust the HVAC installation. The balance agent will be responsible for any pulley or belt changes required.
B. The GC is to have trained staffed available during the balancing to correct issues noted by the balance agent.
C. The balance agent is to balance airflow within distribution systems, including submains, branches, and terminals to indicated quantities +/- 10%. The hood exhaust system shall be balanced to a tolerance of -0+10% and the make-up air system to a tolerance of -10+0%.
D. The balance agent is to supply a copy of the balance report to the Tenant, engineer and general contractor for review.

END OF SECTION 15810

SECTION 15855 - DIFFUSERS, REGISTERS, AND GRILLES

PART 1 - GENERAL

1.1 SECTION REQUIREMENTS

- A. Submittals: None.

PART 2 - PRODUCTS

2.1 OUTLETS AND INLETS

- A. All air terminal devices:
1. Refer to Grills, Registers, and Diffusers Schedule for equipment schedule
2. Manufacturer: As scheduled (NO SUBSTITUTIONS)
3. Material: As scheduled.
4. Finish: As scheduled.
5. Mounting: As scheduled.

PART 3 - EXECUTION

3.1 INSTALLATION

- A. Coordinate location and installation with duct installation and installation of other ceiling and wall mounted items.
B. Locate ceiling diffusers, registers, and grilles, as indicated on the architectural "reflected ceiling plans." Unless otherwise indicated, locate units in center of acoustical ceiling panels.

END OF SECTION 15855

HVAC GENERAL NOTES

- A. GENERAL NOTES APPLY TO HVAC SHEETS.
B. WORK SHALL COMPLY WITH STATE AND LOCAL CODE REQUIREMENTS AS APPROVED AND AMENDED BY THE AUTHORITY HAVING JURISDICTION, INCLUDING APPLICABLE SECTIONS OF NFPA, THE MECHANICAL CODE, AND ANY INTERIM AMENDMENTS AT THE TIME OF THE PROPOSAL. PURCHASE PERMITS ASSOCIATED WITH THE WORK. OBTAIN INSPECTIONS REQUIRED BY CODE. SEE ARCHITECTURAL SHEETS FOR THE PREVAILING CODES.
C. CONTRACTOR AND SUBCONTRACTORS SHALL REVIEW A COMPLETE SET OF THE CONSTRUCTION DOCUMENTS.
D. COORDINATE WORK WITH THE WORK OF OTHER TRADES, EQUIPMENT FURNISHED BY OTHERS, REQUIREMENTS OF THE OWNER, AND OF THE EXISTING CONDITIONS AT THE PROJECT SITE.
E. DRAWINGS FOR THE MECHANICAL WORK ARE DIAGRAMMATIC, SHOWING THE GENERAL LOCATION, TYPE, LAYOUT, AND EQUIPMENT REQUIRED. THE DRAWING SHALL NOT BE SCALED FOR EXACT MEASUREMENTS, REFER TO ARCHITECTURAL DRAWINGS FOR DIMENSIONS. REFER TO MANUFACTURER'S STANDARD INSTALLATION DRAWINGS FOR EQUIPMENT CONNECTIONS AND INSTALLATION REQUIREMENTS. PROVIDE DUCTWORK, CONNECTIONS, OFFSETS, ACCESSORIES, AND MATERIALS NECESSARY FOR A COMPLETE SYSTEM.
F. DUCT DIMENSIONS ON PLANS INDICATE DIMENSIONS OF INTERNAL FREE AREA.
G. PERFORATED CEILING DIFFUSERS SHALL BE 4-WAY UNLESS NOTED OTHERWISE.
H. COORDINATE ROOF WORK WITH THE OWNER'S CONSTRUCTION MANAGER PRIOR TO CONSTRUCTION.
I. UNLESS NOTED OTHERWISE RECTANGULAR DUCT ELBOWS GREATER THAN 45° SHALL BE MITERED ELBOWS WITH DOUBLE-THICKNESS TURNING VANES AND RECTANGULAR DUCT ELBOWS 45° OR LESS SHALL BE RADIUSSED ELBOWS WITH AN INSIDE RADIUS OF AT LEAST 1/2 THE WIDTH OF THE DUCT.
J. REPLACE AIR FILTERS WITH NEW, CLEAN MERV 8 AIR FILTERS AT TURNOVER.
K. THE TERM "FURNISH" MEANS SUPPLY AND DELIVER TO THE PROJECT SITE, READY FOR UNLOADING, UNPACKING, ASSEMBLY, INSTALLATION, AND SIMILAR OPERATIONS. THE TERM "INSTALL" DESCRIBES THE OPERATIONS AT THE PROJECT SITE INCLUDING THE ACTUAL UNLOADING, UNPACKING, ASSEMBLY, ERECTING, PLACING, ANCHORING, APPLYING, WORKING TO DIMENSION, FINISHING, CURING, PROTECTING, CLEANING, AND SIMILAR OPERATIONS. THE TERM "PROVIDE" MEANS TO FURNISH AND INSTALL, COMPLETE AND READY FOR THE INTENDED USE.
L. INSTALL LABELING CALLED FOR IN THE MECHANICAL DRAWINGS USING ENGRAVED PHENOLIC PLATES (WHITE WITH BLACK LETTERING).
M. PROVIDE P3000 12 GA. UNISTRUT WITH PG FINISH FOR DUCT SUPPORTS AND OTHER UNISTRUT IN AREAS EXPOSED TO VIEW. SLOTTED UNISTRUT AND OTHER UNISTRUT WITH HOLES IS NOT ACCEPTABLE.

HVAC MATERIAL SCHEDULE

Table with 2 columns: APPLICATION and ALLOWABLE MATERIAL. Rows include CONCEALED, GENERAL EXHAUST; CONCEALED, RETURN; CONCEALED, SUPPLY; CONCEALED, TYPE I HOOD EXHAUST; EXPOSED GENERAL EXHAUST; EXPOSED RETURN; EXPOSED SUPPLY.

HVAC ABBREVIATIONS

- (E) EXISTING
ABV ABOVE
ADA AMERICANS WITH DISABILITIES ACT
AFF ABOVE FINISHED FLOOR
AFG ABOVE FINISHED GRADE
AHJ AUTHORITY HAVING JURISDICTION
BFF BELOW FINISHED FLOOR
BFG BELOW FINISHED GRADE
BOH BACK OF HOUSE
CLG CEILING
CTE CONNECT TO EXISTING
DN DOWN
EXT'G EXISTING
FLR FLOOR
FOH FRONT OF HOUSE
GYP GYPSUM BOARD
NTS NOT TO SCALE
O/H OVERHEAD
OBD OPPOSED BLADE DAMPER
TYP TYPICAL
U/G UNDERGROUND
UNO UNLESS NOTED OTHERWISE
VFD VARIABLE FREQUENCY DRIVE
VSC VARIABLE SPEED CONTROLLER
W/ WITH
WIC WALK-IN COOLER

- CO2AS TENANT'S CO2 ALARM SUPPLIER
GC GENERAL CONTRACTOR
HES TENANT'S HVAC EQUIPMENT SUPPLIER
HS TENANT'S HOOD SUPPLIER
KES TENANT'S KITCHEN EQUIPMENT SUPPLIER
LL LANDLORD
MSS TENANT'S MUSIC SYSTEMS SUPPLIER
SPS TENANT'S SODA POP SUPPLIER
TAB TENANT'S TEST AND BALANCE VENDOR
TCC TENANT'S CABLING CONTRACTOR
TDC TENANT'S DUCT CLEANER
TEMS TENANT'S ENERGY MANAGEMENT SYSTEM SUPPLIER
TLS TENANT'S LIGHT/LAMP SUPPLIER
TMB TENANT'S MENU BOARD SUPPLIER
TMS TENANT'S MILLWORK SUPPLIER
TP TENANT'S PHONE SUPPLIER
TPS TENANT'S PANELBOARD SUPPLIER
TRS TENANT'S RAILING SUPPLIER
TSV TENANT'S SIGN VENDOR
TUV TENANT'S UV SNATIZER SUPPLIER
WCS TENANT'S WALK-IN COOLER SUPPLIER
WHS TENANT'S WATER HEATER SUPPLIER

HVAC SYMBOLS

- CEILING DIFFUSER
CEILING-MOUNTED RETURN OR EXHAUST REGISTER
SUPPLY REGISTER
RETURN GRILLE
FLEXIBLE DUCT
MITERED CORNER WITH TURNING VANES
DUCTWORK INTERNAL FREE DIMENSIONS (WIDTH/HEIGHT)
RECTANGULAR TO ROUND DUCT TRANSITION
DUCT-MOUNTED SMOKE DETECTOR
MOTOR-OPERATED DAMPER
MANUAL VOLUME DAMPER
GREASE DUCT CLEANOUT
MITERED CORNER WITHOUT TURNING VANES
GRIDPOINT THERMOSTAT
GRIDPOINT ZONE SENSOR MODULE
GRIDPOINT SUPPLY PROBE
PLAN NOTE: SEE PLAN NOTES LISTED ON THE SAME SHEET FOR NOTE MEANING
CONNECT TO EXISTING
EQUIPMENT TAG: SEE EQUIPMENT SCHEDULE ON SHEET M600 FOR EQUIPMENT INFORMATION
AUDIO/VISUAL REMOTE SMOKE DETECTOR ANNUNCIATOR WITH REMOTE KEY OPERATED RESET
GRILL, REGISTER, OR DIFFUSER TAG: TAG, NECK SIZE, AIRFLOW [CFM]

Consultant:



4635 Trueman Blvd, Suite 250 Hilliard, Ohio 43026
Phone: (614) 751-9610
Fax: (614) 552-5240
Contact: Andy Janosik (614) 328-2028
ajanosik@nationalengineering.com

FOR CONSTRUCTION

COPYRIGHT 2024
THIS DRAWING IS AN INSTRUMENT OF SERVICE AND AS SUCH REMAINS THE PROPERTY OF CHIPOTLE MEXICAN GRILL, INC.. PERMISSION FOR USE OF THIS DOCUMENT IS LIMITED AND CAN BE EXTENDED ONLY BY WRITTEN AGREEMENT WITH CHIPOTLE MEXICAN GRILL, INC..



CHIPOTLE MEXICAN GRILL, INC.
PO BOX 182566
COLUMBUS, OH 43218-2566
TELEPHONE: 614.318.2400
INTERNET: WWW.CHIPOTLE.COM

STORE NO.: 5129
JEFFERSONVILLE 10TH ST.
3513 E. 10TH STREET
JEFFERSONVILLE, IN 47130

Issue Record table with columns: Date, Description, Status. Rows: 02.02.2024 PERMIT SET, 05.08.2024 BID SET, 07.17.2024 CONSTRUCTION SET

Revisions table with columns: No., Description, Date. Multiple empty rows.

Drawn: AJJ Checked: AJJ

Project No. 2301103

Contents:

HVAC SPECIFICATIONS

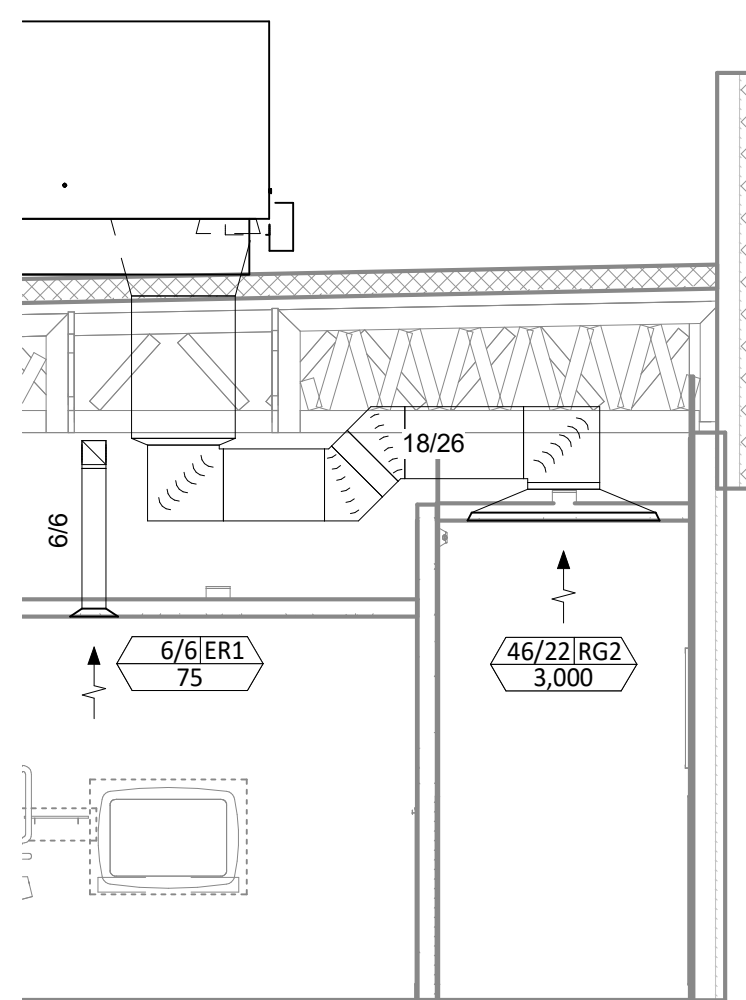
M010

### HVAC PLAN NOTES

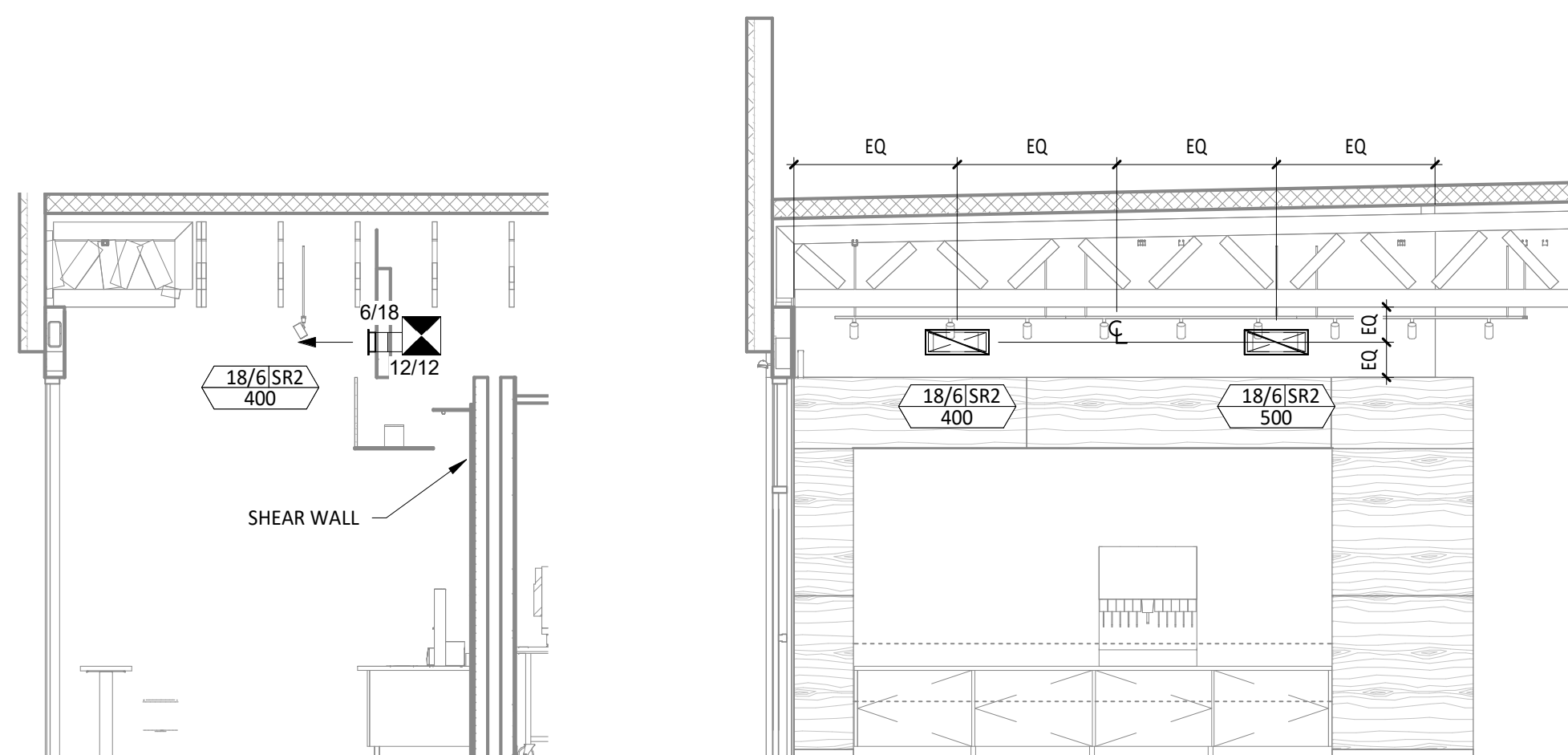
- 1 SEE ARCHITECTURAL REFLECTED CEILING PLAN FOR CEILING MOUNTED EQUIPMENT LOCATION. TYPICAL.
- 2 PAINT DUCTWORK VISIBLE THROUGH DINING ROOM SUPPLY REGISTERS BLACK. TYPICAL.
- 3 PENETRATIONS THROUGH SHEAR WALL SHALL BE LIMITED TO 10" DIAMETER (OR A GROUP OF PENETRATIONS ALL CONTAINED WITHIN 10" DIAMETER). IF LARGER PENETRATIONS OR GROUPS OF PENETRATIONS ARE REQUIRED COORDINATE WITH STRUCTURAL ENGINEER FOR APPROPRIATE BRACING. SEE STRUCTURAL DRAWINGS FOR SHEAR WALL LOCATION.
- 4 26/14 DUCT UP FOR TRANSITION TO RTU-1 RETURN CONNECTION IN ROOF CURB. RTU-1 SHALL HAVE AN INTEGRAL SMOKE DETECTOR MOUNTED IN THE RETURN AIR STREAM. INTERLOCK SMOKE DETECTOR TO RTU-1 OPERATION.
- 5 26/18 DUCT UP FOR TRANSITION TO RTU-2 RETURN CONNECTION IN ROOF CURB. RTU-2 SHALL HAVE AN INTEGRAL SMOKE DETECTOR MOUNTED IN THE RETURN AIR STREAM. INTERLOCK SMOKE DETECTOR TO RTU-2 OPERATION.
- 6 26/14 DUCT UP FROM BUILDING SUPPLY THROUGH ROOF. TRANSITION TO RTU-1 SUPPLY CONNECTION IN ROOF CURB.
- 7 30/16 DUCT UP FROM BUILDING SUPPLY TO RTU-2 SUPPLY CONNECTION. TRANSITION IN ROOF CURB.
- 8 14/14 DUCT UP THROUGH ROOF. TRANSITION TO MAU-1 SUPPLY CONNECTION IN ROOF CURB.
- 9 16/16 DUCT UP FROM HOOD THROUGH ROOF TO EF-1 COMPLIANT WITH NFPA 96. PROVIDE RADIUS ELBOWS WITH AN INSIDE RADIUS OF 0.5W AT ELBOWS IN GREASE DUCT.
- 10 8/6 DUCT UP THROUGH ROOF TO EF-2.
- 11 28/6 DUCT DOWN TO MAKEUP AIR PSP DUCT CONNECTION. TRANSITION TO SUPPLY PLENUM OPENING SIZE. TYPICAL FOR 3.
- 12 8" DIA. DUCT DOWN TO AC PSP DUCT CONNECTION. TRANSITION TO SUPPLY PLENUM OPENING SIZE. TYPICAL. CAP UNUSED DUCT CONNECTIONS.
- 13 INSTALL SINGLE-GANG VERTICAL J-BOX FOR GRIDPOINT THERMOSTATS FURNISHED BY TEMS FOR RTU-1 AND RTU-2 AT THIS LOCATION AT 48" AFF. COORDINATE WITH ELECTRICAL SWITCHING IN THIS AREA. PROVIDE WIRING AS SHOWN IN DETAIL 8/E710.
- 14 INSTALL GRIDPOINT ZONE SENSOR MODULE FURNISHED BY TEMS FOR RTU-1 AT THIS LOCATION 72" AFF DIRECTLY TO WALL (NO JUNCTION BOX). COORDINATE LOCATION WITH EQUIPMENT. PROVIDE WIRING AS SHOWN IN DETAIL 8/E710.
- 15 INSTALL GRIDPOINT ZONE SENSOR MODULE FURNISHED BY TEMS FOR RTU-2 AT THIS LOCATION 66" AFF DIRECTLY TO WALL (NO JUNCTION BOX). COORDINATE LOCATION WITH EQUIPMENT. PROVIDE WIRING AS SHOWN IN DETAIL 8/E710.
- 16 INSTALL GRIDPOINT SUPPLY PROBE FURNISHED BY TEMS FOR RTU-1 IN THE SUPPLY DUCTWORK UPSTREAM FROM THE FIRST BRANCH CONNECTION. PROVIDE WIRING AS SHOWN IN DETAIL 8/E710.
- 17 INSTALL GRIDPOINT SUPPLY PROBE FURNISHED BY TEMS FOR RTU-2 IN THE SUPPLY DUCTWORK UPSTREAM FROM THE FIRST BRANCH CONNECTION. PROVIDE WIRING AS SHOWN IN DETAIL 8/E710.
- 18 INSTALL REMOTE TEMPERATURE SENSOR FOR HOOD HD-1 AT THIS LOCATION 72" AFF. COORDINATE LOCATION WITH EQUIPMENT. PROVIDE (2) #18 G. THERMISTOR CABLE FROM TEMPERATURE SENSOR TO HOOD CONTROL PANEL.
- 19 INSTALL KITCHEN HOOD, HD-1. SUPPORT HOOD PER MANUFACTURER'S INSTALLATION INSTRUCTIONS AND AS DETAILED IN THE ARCHITECTURAL AND STRUCTURAL DRAWINGS. INSTALL HOOD ACCORDING TO THE REQUIREMENTS OF ITS LISTING, IN COMPLIANCE WITH NFPA 96, THE BUILDING CODE, AND AUTHORITIES HAVING JURISDICTION. HOOD SHALL HAVE AN INTEGRAL DUCT COLLAR TEMPERATURE SENSOR TO AUTOMATICALLY ENERGIZE THE EXHAUST AND MAKEUP AIR FANS IF COOKING TEMPERATURES ARE DETECTED. EXHAUST DUCT SYSTEM TO BE WELDED OR FACTORY-MANUFACTURED WATER AND AIR TIGHT. INSTALL CLEANOUTS PER CODE AND AS SHOWN. INSTALL HOOD PER DETAILS 2, 4, AND 9/M700. CHIPOTLE WILL PROVIDE AN INDEPENDENT TESTING AGENCY FOR TESTING THE INTEGRITY OF THE GREASE DUCT SYSTEM.

### HVAC PLAN NOTES

- 20 INSTALL REMOTE CONDENSING UNIT FOR WALK-IN COOLER ON ROOF AS DETAILED IN THE ARCHITECTURAL AND STRUCTURAL DRAWINGS. INSTALL REFRIGERANT LINE SET, THERMOSTATIC EXPANSION VALVE, SOLENOID VALVE, TEMPERATURE CONTROL, SIGHT GLASS, FILTER DRIER, PRESSURE CONTROL, LOW AMBIENT CONTROLS, AND WEATHERPROOF HOUSING. TRAP AND SLOPE REFRIGERANT LINES PER MANUFACTURER'S RECOMMENDATIONS. INSTALLATION SHALL COMPLY WITH ASHRAE/ANSI STANDARD 15. INSTALL THE REFRIGERANT LINE SET UNDER THE ROOF DECK TO WITHIN 3' OF THE CONDENSING UNIT. CUT 2-1/2" HOLE IN WALK-IN COOLER ROOF FOR REFRIGERANT LINE SET AND SEAL PER THE COOLER MANUFACTURER'S INSTALLATION INSTRUCTIONS AFTER LINE SET IS INSTALLED.
- 21 INSTALL REMOTE CONDENSER FOR ICE MACHINE ON ROOF AS DETAILED IN THE ARCHITECTURAL AND STRUCTURAL DRAWINGS. INSTALL REFRIGERANT LINE SET, THERMOSTATIC EXPANSION VALVE, SOLENOID VALVE, TEMPERATURE CONTROL, SIGHT GLASS, FILTER DRIER, PRESSURE CONTROL, LOW AMBIENT CONTROLS, AND WEATHERPROOF HOUSING. TRAP AND SLOPE REFRIGERANT LINES PER MANUFACTURER'S RECOMMENDATIONS. SEAL PIPING PENETRATIONS THROUGH ROOF. INSTALLATION SHALL COMPLY WITH ASHRAE/ANSI STANDARD 15. INSTALL THE REFRIGERANT LINE SET UNDER THE ROOF DECK TO WITHIN 3' OF THE REMOTE CONDENSER. IF REFRIGERANT PIPING TO ICE MAKER IS EXPOSED TO PUBLIC VIEW CONCEAL WITHIN A STAINLESS STEEL SHROUD AS SHOWN IN THE ARCHITECTURAL DRAWINGS.
- 22 INSTALL ROOFTOP EQUIPMENT PER MANUFACTURER'S INSTALLATION INSTRUCTIONS AND AS DETAILED IN THE ARCHITECTURAL AND STRUCTURAL DRAWINGS.
- 23 INSTALL EXHAUST FAN EF-1 PER DETAIL 5/M700 AND AS DETAILED IN THE ARCHITECTURAL AND STRUCTURAL DRAWINGS. INSTALL GREASE VIROGUARD SYSTEM FURNISHED BY CHIPOTLE ON EXHAUST FAN, EF-1.
- 24 PROVIDE SUPPLY DIFFUSER CONNECTION TO SUPPLY SYSTEM PER DETAIL 1/M700. TYPICAL.
- 25 PROVIDE AUDIO/VISUAL REMOTE SMOKE DETECTOR ANNUNCIATOR WITH REMOTE KEY OPERATED RESET. WIRE A UNIT BACK TO EACH SMOKE DETECTOR. MOUNT UNIT 60" AFF. TYPICAL.
- 26 INSTALL REME HALO AIR PURIFIER FURNISHED BY TUV IN RTU PER DETAIL 6/M700. SEE ELECTRICAL DRAWINGS FOR POWER CONNECTION INFORMATION. INSTALL UV WARNING STICKERS ON FACE OF ENCLOSURE PER DETAIL AND ON ANY RTU ACCESS DOOR(S) THROUGH WHICH THE REME HALO WOULD BE VISIBLE IF OPENED.
- 27 MAINTAIN 10" CLEARANCE BETWEEN WATER HEATER FLUE TERMINATION AND OUTSIDE AIR INTAKES. MAINTAIN 10" CLEARANCE BETWEEN WATER HEATER COMBUSTION AIR INTAKE AND EXHAUST FAN EF-1 DISCHARGE. SEE PLUMBING DRAWINGS FOR MORE INFORMATION ON WATER HEATER FLUE AND COMBUSTION AIR TERMINATIONS.
- 28 ADJUST SUPPLY REGISTERS SO THAT SUPPLY AIR HITS WALL ON OPPOSITE SIDE OF ROOM AT APPROXIMATELY 7' AFF WITH NO DRAFTS FELT IN THE DINING ROOM.

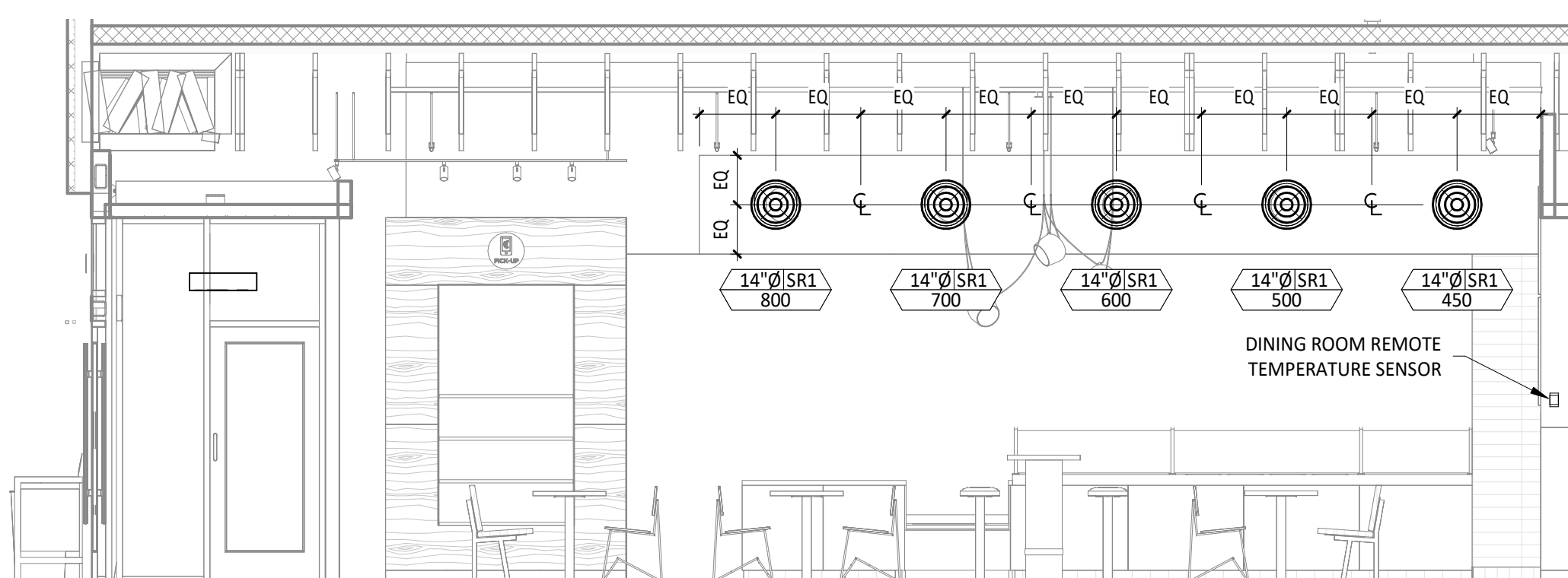


6 M100 HVAC DINING ROOM RETURN SECTION  
1/4" = 1'-0"

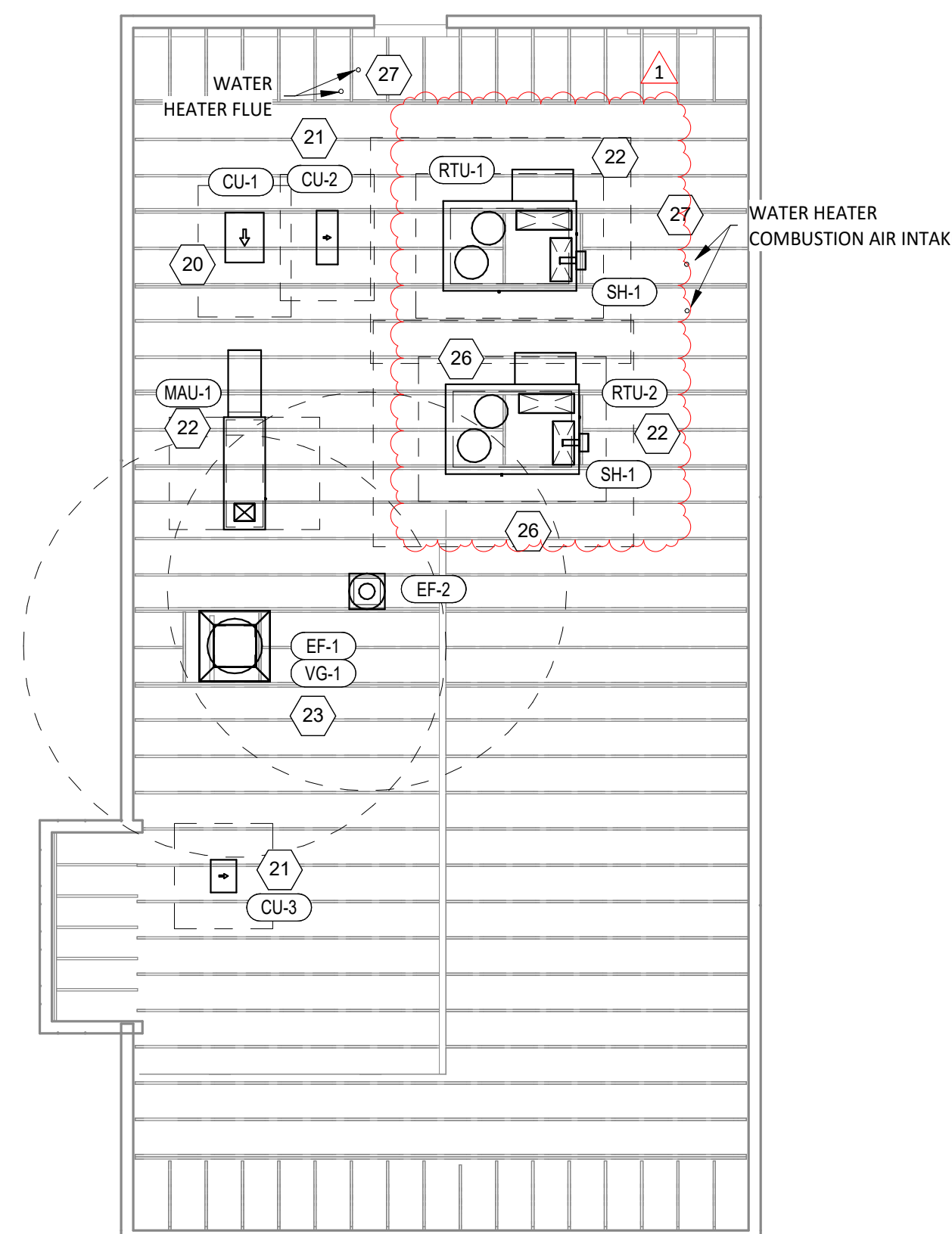


5 M100 HVAC DINING ROOM SECTION  
1/4" = 1'-0"

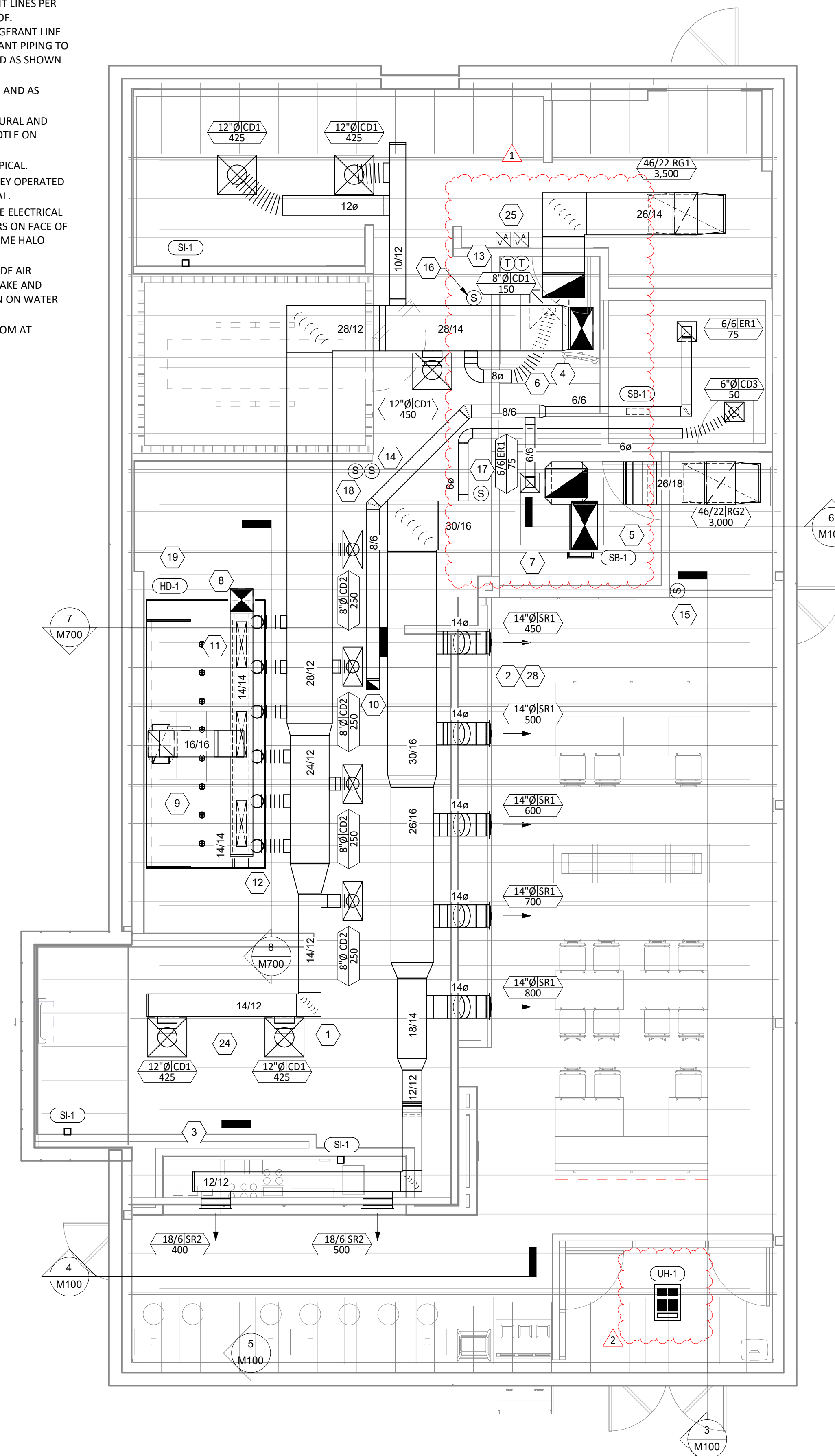
4 M100 HVAC DINING ROOM SECTION  
1/4" = 1'-0"



3 M100 HVAC DINING ROOM SECTION  
1/4" = 1'-0"



2 M100 HVAC ROOF PLAN  
1/8" = 1'-0"



1 M100 HVAC FLOOR PLAN  
1/4" = 1'-0"

Consultant:  
  
 4635 Trueman Blvd, Suite 250  
 Hilliard, Ohio 43026  
 Phone: (614) 751-9610  
 Fax: (614) 552-5240  
 Contact: Andy Janosik  
 (614) 328-2028  
 ajanosik@nationalengineering.com

FOR  
CONSTRUCTION

COPYRIGHT 2024  
 THIS DRAWING IS AN INSTRUMENT OF SERVICE  
 AND AS SUCH REMAINS THE PROPERTY OF  
 CHIPOTLE MEXICAN GRILL, INC. PERMISSION FOR  
 USE OF THIS DOCUMENT IS LIMITED AND CAN BE  
 EXTENDED ONLY BY WRITTEN AGREEMENT WITH  
 CHIPOTLE MEXICAN GRILL, INC.



CHIPOTLE MEXICAN GRILL, INC.  
 PO BOX 182566  
 COLUMBUS, OH 43218-2566  
 TELEPHONE: 614.318.2400  
 INTERNET: WWW.CHIPOTLE.COM

STORE NO.: 5129  
 JEFFERSONVILLE 10TH ST.  
 3513 E. 10TH STREET  
 JEFFERSONVILLE, IN 47130

| Issue Record: |                  |
|---------------|------------------|
| 02.02.2024    | PERMIT SET       |
| 05.08.2024    | BID SET          |
| 07.17.2024    | CONSTRUCTION SET |

| Revisions: |                             |
|------------|-----------------------------|
| 1          | 02.26.24 RTU UPDATE         |
| 2          | 05.08.24 UNIT HEATER UPDATE |

Drawn: AJJ  
 Checked: AJJ

Project No:  
 2301103

Contents:

HVAC PLAN

M100







2

### UNIT HEATER SCHEDULE

| TAG  | DESCRIPTION                 | MOUNTING | ELECTRICAL |          | FURNISHED BY | INSTALLED BY | BASIS FOR DESIGN |           | REMARKS   |
|------|-----------------------------|----------|------------|----------|--------------|--------------|------------------|-----------|---|
|      |                             |          | POWER [KW] | V/P/H    |              |              | MANUFACTURER     | MODEL     |   |
| UH-1 | CEILING-MOUNTED UNIT HEATER | CEILING  | 3          | 208/1/60 | HES          | GC           | INDEECO          | 931U0400V | FURNISHED WITH WHITE FINISH, DISCONNECT SWITCH, AND BUILT-IN TAMPERPROOF THERMOSTAT FOR RECESSED MOUNTING |

### SANITIZING EQUIPMENT SCHEDULE

| TAG  | COUNT | DESCRIPTION                    | FURNISHED BY | INSTALLED BY | BASIS FOR DESIGN        |              | REMARKS   |
|------|-------|--------------------------------|--------------|--------------|-------------------------|--------------|---|
|      |       |                                |              |              | MANUFACTURER            | MODEL        |   |
| SB-1 | 2     | BATHROOM AIR PURIFICATION UNIT | TUV          | GC           | RGF ENVIRONMENTAL GROUP | BRU ASSEMBLY | SEE ELECTRICAL SHEETS FOR CONNECTION INFORMATION    |
| SH-1 | 2     | HVAC AIR PURIFICATION UNIT     | TUV          | GC           | RGF ENVIRONMENTAL GROUP | REME-HALO    | SEE DETAIL 6/M700 FOR INSTALLATION INFORMATION.     |
| SI-1 | 3     | ICE MACHINE TREATMENT SYSTEM   | TUV          | GC           | RGF ENVIRONMENTAL GROUP | IMS-B-GA     | SEE PLUMBING DRAWINGS FOR INSTALLATION INFORMATION. |

### FAN SCHEDULE

| TAG  | DESCRIPTION                    | AIRFLOW   | E.S.P.     | WEIGHT | ELECTRICAL  |          | FURNISHED BY | INSTALLED BY | BASIS FOR DESIGN |          | REMARKS   |
|------|--------------------------------|-----------|------------|--------|-------------|----------|--------------|--------------|------------------|----------|---|
|      |                                |           |            |        | MOTOR POWER | V/P/H    |              |              | MANUFACTURER     | MODEL    |   |
| EF-1 | UPBLAST UL762 EXHAUST FAN      | 2,550 CFM | 1.20 in-wg | 400 lb | 2 hp        | 208/3/60 | HS           | GC           | CAPTIVE-AIRE     | DU180HFA | DIRECT DRIVE UL762 UPBLAST EXHAUST FAN FURNISHED WITH WEATHERPROOF DISCONNECT AND VENTED ROOF CURB                        |
| EF-2 | DOWNBLAST RESTROOM EXHAUST FAN | 150 CFM   | 0.60 in-wg | 100 lb | 0.18 hp     | 120/1/60 | HS           | GC           | CAPTIVE-AIRE     | DR12HFA  | DIRECT DRIVE DOWNBLAST RESTROOM EXHAUST FAN FURNISHED WITH INTEGRAL DISCONNECT, SPEED CONTROL, BACKDRAFT DAMPER, AND CURB |

### VIROGUARD SCHEDULE

| TAG  | COUNT | DESCRIPTION   | DUCT CONNECTION SIZE | FAN                   | FURNISHED BY | INSTALLED BY | BASIS FOR DESIGN |
|------|-------|---|----------------------|-----------------------|--------------|--------------|------------------|
| VG-1 | 1     | VIROGUARD HOOD EXHAUST FAN ROOFTOP CONTAINMENT SYSTEM | 16" X 16"            | CAPTIVE-AIRE DU180HFA | TDC          | GC           | ENVIROMATIC      |

### CONDENSING UNIT SCHEDULE

| TAG  | DESCRIPTION                               | NOMINAL CAPACITY | NUMBER OF   |          | REFRIGERANT |          | WEIGHT | ELECTRICAL |     |          | FURNISHED BY | INSTALLED BY | BASIS FOR DESIGN |               | REMARKS                       |
|------|---|------------------|-------------|----------|-------------|----------|--------|------------|-----|----------|--------------|--------------|------------------|---------------|-------------------------------|
|      |   |                  | COMPRESSORS | CIRCUITS | TYPE        | CHARGE   |        | MOCP       | FLA | V/P/H    |              |              | MANUFACTURER     | MODEL         |                               |
| CU-1 | CONDENSING UNIT - WALK-IN COOLER          |                  | 1           | 1        | R-404A      | 10.4 lb  | 250 lb | 15 A       | 9 A | 208/3/60 | WCS          | GC           | HARFORD          | KPCL99MZOP-3E | FURNISHED WITH WALK-IN COOLER |
| CU-2 | REMOTE CONDENSER - LOW CAPACITY ICE MAKER |                  | 0           | 1        | R-404A      | 11.46 lb | 100 lb |            |     | 120/1/60 | KES          | GC           | HOSHIZAKI        | URC-9F        | FURNISHED WITH ICE MAKER      |
| CU-3 | REMOTE CONDENSER - SODA MACHINE ICE MAKER |                  | 0           | 1        | R-404A      | 3.86 lb  | 100 lb |            |     | 120/1/60 | KES          | GC           | HOSHIZAKI        | URC-5F        | FURNISHED WITH ICE MAKER      |

### MAKEUP AIR UNIT SCHEDULE

| TAG   | DESCRIPTION                  | AIRFLOW   | E.S.P.     | HEATING       |               |       | WEIGHT | ELECTRICAL  |          | FURNISHED BY | INSTALLED BY | BASIS FOR DESIGN |              | REMARKS   |
|-------|------------------------------|-----------|------------|---------------|---------------|-------|--------|-------------|----------|--------------|--------------|------------------|--------------|---|
|       |                              |           |            | INPUT         | OUTPUT        | EAT   |        | MOTOR POWER | V/P/H    |              |              | MANUFACTURER     | MODEL        |   |
| MAU-1 | DIRECT-FIRED MAKEUP AIR UNIT | 1,300 CFM | 0.50 in-wg | 225,000 Btu/h | 220,000 Btu/h | 21 °F | 650 lb | 1 hp        | 208/3/60 | HS           | GC           | CAPTIVE-AIRE     | A1-D.250-15D | 12.5:1 MAX TURNDOWN. FURNISHED WITH DISCONNECT, ROOF CURB, SCREEN INTAKE, AND WASHABLE ALUMINUM FILTERS |

### KITCHEN HOOD SCHEDULE

| TAG  | DESCRIPTION  | MAX COOKING TEMP. | EXHAUST PLENUM |            |              |       |         |          | PERFORATED SUPPLY PLENUMS |          |            |           |           |    | NO. OF LIGHT FIXTURES | WEIGHT  | FURNISHED BY | INSTALLED BY | BASIS FOR DESIGN |          | REMARKS |    |              |                  |   |
|------|--|-------------------|----------------|------------|--------------|-------|---------|----------|---------------------------|----------|------------|-----------|-----------|----|-----------------------|---------|--------------|--------------|------------------|----------|---------|----|--------------|------------------|---|
|      |  |                   | AIRFLOW        | E.S.P.     | DUCT COLLARS |       | LENGTH  | WIDTH    | LENGTH                    | WIDTH    | MAU PLENUM |           | AC PLENUM |    |                       |         |              |              | MANUFACTURER     | MODEL    |         |    |              |                  |   |
|      |  |                   |                |            | NO.          | WIDTH |         |          |                           |          | NO.        | DIAMETER  |           |    |                       |         |              |              |                  |          |         |    |              |                  |   |
| HD-1 | TYPE I CANOPY HOOD WITH PERFORATED MAU AND AC SUPPLY PLENUMS | 600 °F            | 2,550 CFM      | 0.97 in-wg | 1            | 10"   | 2' - 0" | 12' - 9" | 4' - 3"                   | 13' - 9" | 1' - 7"    | 1,300 CFM | 3         | 6" | 2' - 4"               | 700 CFM | 6            | 8"           | 8                | 1,150 lb | HS      | GC | CAPTIVE-AIRE | 5424 ND-2-ACPS-P | MAT'L: 18 GA. TYPE 430 SS. FURNISHED WITH VERTICAL END PANELS, VAPORPROOF INCANDESCENT LIGHT FIXTURES, 16" TALL HE SS FILTERS, INTEGRAL UTILITY CABINET, KITCHEN EXHAUST SUPPRESSION SYSTEM, DUCT COLLAR TEMPERATURE SENSOR, PREWIRE PACKAGE, SPARE FIRE SYSTEM DRY CONTACT, AND 4-POLE 20A CONTACTOR |

### ROOFTOP UNIT SCHEDULE

| TAG   | DESCRIPTION              | NOMINAL CAPACITY | EER | AIRFLOW   |           | NET COOLING CAPACITY |           |          |           | HEATING CAPACITY |        |               | NUMBER OF     |          | REFRIGERANT |        | ELECTRICAL |         |          | FURNISHED BY | INSTALLED BY | BASIS FOR DESIGN |              | REMARKS |         |          |  |
|-------|--------------------------|------------------|-----|-----------|-----------|----------------------|-----------|----------|-----------|------------------|--------|---------------|---------------|----------|-------------|--------|------------|---------|----------|--------------|--------------|------------------|--------------|---------|---------|----------|--|
|       |                          |                  |     | TOTAL     | OA        | E.S.P.               | TOTAL     | SENSIBLE | COND. EAT | INPUT            | OUTPUT | EAT           | COMPRESSORS   | CIRCUITS | TYPE        | CHARGE | WEIGHT     | MOCP    | FLA      |              |              | V/P/H            | MANUFACTURER |         | MODEL   |          |  |
|       |                          |                  |     | DB        | WB        |                      |           |          |           |                  |        |               |               |          |             |        |            |         |          |              |              |                  |              |         |         |          |  |
| RTU-1 | KITCHEN ROOFTOP UNIT     | 10 ton           | 11  | 4,000 CFM | 500 CFM   | 0.80 in-wg           | 119 Btu/h | 74 Btu/h | 76 °F     | 67 °F            | 97 °F  | 250,000 Btu/h | 205,000 Btu/h | 60 °F    | 2           | 1      | R-410A     | 15.2 lb | 1,500 lb | 60 A         | 51 A         | 208/3/60         | HES          | GC      | CARRIER | 48FC_N12 | FURNISHED WITH HINGED ACCESS PANELS, STANDARD ECONOMIZER W/ DUAL ENTHALPY CONTROLS, BAROMETRIC RELIEF, RET. SMOKE DETECTOR W/ REMOTE KEYPAD ANNUNCIATOR/RESET, MERV-8 FILTERS, CURB, HAIL GUARD, DISCONNECT, & UNIT-MOUNTED NON-POWERED CONVENIENCE RECEPTACLE |
| RTU-2 | DINING ROOM ROOFTOP UNIT | 10 ton           | 11  | 4,000 CFM | 1,000 CFM | 0.80 in-wg           | 124 Btu/h | 73 Btu/h | 78 °F     | 69 °F            | 97 °F  | 250,000 Btu/h | 205,000 Btu/h | 52 °F    | 2           | 1      | R-410A     | 15.2 lb | 1,500 lb | 60 A         | 51 A         | 208/3/60         | HES          | GC      | CARRIER | 48FC_N12 | FURNISHED WITH HINGED ACCESS PANELS, STANDARD ECONOMIZER W/ DUAL ENTHALPY CONTROLS, BAROMETRIC RELIEF, RET. SMOKE DETECTOR W/ REMOTE KEYPAD ANNUNCIATOR/RESET, MERV-8 FILTERS, CURB, HAIL GUARD, DISCONNECT, & UNIT-MOUNTED NON-POWERED CONVENIENCE RECEPTACLE |

### AIR BALANCE SCHEDULE

| TAG                | SUPPLY FLOW | RETURN FLOW | EXHAUST FLOW | SUBTOTAL   |
|--------------------|-------------|-------------|--------------|------------|
| EF-1               | 0 CFM       | 0 CFM       | 2,550 CFM    | -2,550 CFM |
| EF-2               | 0 CFM       | 0 CFM       | 150 CFM      | -150 CFM   |
| MAU-1              | 1,300 CFM   | 0 CFM       | 0 CFM        | 1,300 CFM  |
| RTU-1              | 4,000 CFM   | 3,500 CFM   |              |            |
| RTU-2              | 4,000 CFM   | 3,000 CFM   |              |            |
| NET PRESSURIZATION |             |             |              | -1,400 CFM |

### AIR TERMINAL SCHEDULE

| TAG | DESCRIPTION                       | FACE SIZE     | MATERIAL | FINISH | MOUNTING       | FURNISHED BY | INSTALLED BY | BASIS FOR DESIGN |              | NOTES   |
|-----|-----------------------------------|---------------|----------|--------|----------------|--------------|--------------|------------------|--------------|---|
|     |                                   |               |          |        |                |              |              | MANUFACTURER     | MODEL        |   |
| CD1 | PERFORATED CEILING DIFFUSER       | 24" X 24"     | ALUMINUM | WHITE  | LAY-IN CEILING | GC           | GC           | NAILOR           | 4320A TYPE L | PROVIDE WITH INTEGRAL OBD                               |
| CD2 | PERFORATED CEILING DIFFUSER       | 24" X 12"     | ALUMINUM | WHITE  | LAY-IN CEILING | GC           | GC           | NAILOR           | 4320A TYPE L | PROVIDE WITH INTEGRAL OBD, REMOVE 4-WAY DEFLECTORS      |
| CD3 | PERFORATED CEILING DIFFUSER       | 12" X 12"     | ALUMINUM | WHITE  | SURFACE MOUNT  | GC           | GC           | NAILOR           | 4320A TYPE S | PROVIDE WITH INTEGRAL OBD                               |
| ER1 | PERFORATED CEILING EXHAUST        | 12" X 12"     | ALUMINUM | WHITE  | SURFACE MOUNT  | GC           | GC           | NAILOR           | 4330R TYPE S | PROVIDE INTEGRAL OBD                                    |
| RG1 | PERFORATED CEILING RETURN         | 48" X 24"     | ALUMINUM | WHITE  | LAY-IN CEILING | GC           | GC           | NAILOR           | 4330R TYPE L |   |
| RG2 | PERFORATED CEILING RETURN         | 48" X 24"     | ALUMINUM | WHITE  | SURFACE MOUNT  | GC           | GC           | NAILOR           | 4330R TYPE S |   |
| SR1 | ADJUSTABLE TURBO NOZZLE           | SEE NECK SIZE | ALUMINUM | WHITE  | WALL           | GC           | GC           | AIR CONCEPTS     | ANR-14       | PROVIDE WITH CONCEALED MOUNTING AND FACE-ACCESSIBLE OBD |
| SR2 | DOUBLE DEFLECTION SUPPLY REGISTER | SEE NECK SIZE | ALUMINUM | WHITE  | WALL           | GC           | GC           | NAILOR           | 51DH         | PROVIDE WITH INTEGRAL OBD                               |

### CONTROL FUNCTIONS

- THE MAIN COOKING EXHAUST FAN AND MAKE-UP AIR UNIT SHALL BE INTERLOCKED TO OPERATE TOGETHER. THIS CONTROL CIRCUIT IS ACTIVATED BY A SWITCH AND INCLUDES A FIRE PROTECTION OVERRIDE.
- THE TEMPERATURE IN EACH ZONE IS CONTROLLED BY SPACE TEMPERATURE SENSORS CONNECTED TO THE THERMOSTATS LOCATED IN THE OFFICE. ALL ZONES SHALL OPERATE WITH CONTINUOUS FAN OPERATION DURING OCCUPIED TIMES AND INTERMITTENTLY AS NEEDED TO MAINTAIN SET POINTS DURING UNOCCUPIED TIMES. OUTSIDE AIR DAMPERS SHALL BE OPEN CONTINUOUSLY WHEN EITHER IN OCCUPIED MODE OR WHEN THE HOOD SYSTEM IS ON AND SHALL BE CLOSED DURING UNOCCUPIED PERIODS.
- THE THERMOSTATS SHALL DETERMINE OCCUPIED/UNOCCUPIED STATUS BASED ON THE SCHEDULE IN THE ENERGY MANAGEMENT SYSTEM.

Consultant:  
  
**NATIONAL**  
 ENGINEERING  
 4635 Trueman Blvd. Suite 250  
 Hilliard, Ohio 43026  
 Phone: (614) 751-9610  
 Fax: (614) 552-5240  
 Contact: Andy Janosik  
 (614) 328-2028  
 ajanosik@nationalengineering.com

FOR  
 CONSTRUCTION

COPYRIGHT 2024  
 THIS DRAWING IS AN INSTRUMENT OF SERVICE AND AS SUCH REMAINS THE PROPERTY OF CHIPOTLE MEXICAN GRILL, INC.. PERMISSION FOR USE OF THIS DOCUMENT IS LIMITED AND CAN BE EXTENDED ONLY BY WRITTEN AGREEMENT WITH CHIPOTLE MEXICAN GRILL, INC..



CHIPOTLE MEXICAN GRILL, INC.  
 PO BOX 182566  
 COLUMBUS, OH 43218-2566  
 TELEPHONE: 614.318.2400  
 INTERNET: WWW.CHIPOTLE.COM

STORE NO.: 5129  
 JEFFERSONVILLE 10TH ST.  
 3513 E. 10TH STREET  
 JEFFERSONVILLE, IN 47130

Issue Record:  
 02.02.2024 PERMIT SET  
 05.08.2024 BID SET  
 07.17.2024 CONSTRUCTION SET

Revisions:  
 1 02.26.24 RTU UPDATE  
 2 05.08.24 UNIT HEATER UPDATE

Drawn: AJJ  
 Checked: AJJ

Project No.  
 2301103

Contents:  
 HVAC SCHEDULES

M600

