

KEY NOTES

- 1 MOUNT REMOTE SENSOR ON WALL AT 5'-0" AFF AND ROUTE WIRING BACK TO SUNCOAST TEMP CONTROL PANEL. SENSOR IN KITCHEN TO BE MOUNTED AT 6'-7" AFF TO TOP OF SENSOR.
- 2 8X8 CONNECTION TO HOOD#3 WITH HALTON MBD BALANCING DAMPER INSTALLED AT HOOD COLLAR. SEE DWG M21 FOR MORE INFORMATION.
- 3 BRANCH TAKE-OFFS ARE NOT TO BE LOCATED CLOSER THAN 3'-0" FROM ANY ELBOW INCLUDING THE SUPPLY AIR DROP FROM CURB.
- 4 TRANSITION IN VERTICAL DROP FROM FULL SIZE OF CURB OPENING TO SIZE SHOWN. PROVIDE TURNING VANES IN ELBOW.
- 5 TRANSITION IN VERTICAL DROP FROM FULL SIZE OF CURB OPENING TO SIZE SHOWN. NO TURNING VANES IN ELBOW.
- 6 R/A DUCT DROP TO BE FULL SIZE OF CURB CONNECTION. TERMINATE DROP 0'-5" ABOVE CEILING.
- 7 MOUNT LENNOX HUMIDITY SENSOR ON WALL ABOVE SPACE TEMP SENSOR AND ROUTE WIRING TO UNIT ON ROOF. SENSOR IN KITCHEN TO BE MOUNTED BESIDE SPACE TEMP SENSOR.
- 8 EF#1 AND EF#2 MUST BE LOCATED A MINIMUM OF 10 FT FROM PARAPETS.
- 9 SUPPLY AND RETURN DUCTWORK TO BE LOCATED IN THE UPPER HALF OF THE AVAILABLE SPACE ABOVE THE CEILING ON THE MULTI-PURPOSE ROOM SIDE OF THE WALL. CONDUIT AND PIPING TO BE LOCATED IN THE LOWER HALF OF THE AVAILABLE SPACE ABOVE THE CEILING.
- 10 MECHANICAL CONTRACTOR TO ADJUST PATTERN DEFLECTORS TO THROW STRAIGHT DOWN.
- 11 MOUNT REMOTE SENSOR FOR PLAYGROUND 10'-4" AFF. ROUTE WIRING BACK TO SUNCOAST TEMP CONTROL PANEL.
- 12 AIR CURTAIN MOUNTED OVER DOOR HEADER AT 7'-5" AFF TO BOTTOM OF UNIT. LOCATE MAGNETIC CONTACT TYPE MICROSWITCH IN DOOR FRAME ON STRIKE SIDE.
- 13 MECHANICAL CONTRACTOR TO COORDINATE THE LOCATION OF THE SUPPLY AND RETURN DUCT AND GRILLES WITH CONDUIT IN THIS AREA. SUPPLY AND RETURN GRILLES TO OCCUPY LOWER HALF OF THE AVAILABLE SPACE. CONDUIT TO OCCUPY UPPER HALF OF THE AVAILABLE SPACE. DUCT TO BE LOCATED ABOVE THE CEILING ON THE KITCHEN SIDE OF THE WALL.
- 14 SEE ELEVATIONS ON M-21 FOR C.J. FAN DUCTING REQUIREMENTS.
- 15 PROVIDE 8" GALVANIZED COMBUSTION AIR DUCT WITH VENT CAP AND ROOF JACK. OFFSET COMBUSTION AIR DUCT, MIN 18" AWAY FROM PARAPET. SEE ARCH ROOF PLAN FOR PARAPET LOCATIONS. WRAP DUCT ABOVE CEILING WITH 1/2" BATT INSULATION AND PROVIDE CHROME ESCUTCHEON AT WALL PENETRATION. TERMINATE COMBUSTION AIR DUCT AT SIDEWALL WITHIN 12" OF CEILING.
- 16 COMBUSTION AIR DUCT TO BE LOCATED IN THE UPPER HALF OF THE AVAILABLE SPACE ABOVE THE CEILING ON THE MULTI-PURPOSE ROOM SIDE OF THE WALL. COORDINATE WITH PLUMBING PIPING IN THE LOWER HALF OF THE AVAILABLE SPACE.
- 17 PROVIDE SEISMIC RESTRAINTS AT BEGINNING AND END OF GREASE EXHAUST DUCT HORIZONTAL RUNS. SEE DETAILS 6/M3-2 AND 7/M3-2 FOR RESTRAINT SYSTEM INSTALLATION.
- 18 TRANSITION FROM FULL SIZE OF CURB OPENING TO 16' X 52". TERMINATE DROP 0'-5" ABOVE CEILING.

LEGEND

A-12-400	TYPE - NECK SIZE - CFM	EF#1	EXHAUST FAN #1 (TYP.)
	SPIN-IN FITTING WITH MANUAL BALANCING DAMPER, WITHOUT SCOOP	ACH1	AIR CONDITIONING UNIT #1 (TYP.)
	SPIN-IN HARD ϕ FLEXIBLE ϕ DIFFUSER		RETURN/EXHAUST (TYP.)
	REMOTE TEMPERATURE SENSOR		SUPPLY DIFFUSER, SQ FACE (TYP.)
	HUMIDITY SENSOR		PLAN NOTE REFERENCE
	SMOKE DETECTOR		MANUAL VOLUME DAMPER
12X18	DUCT SIZE (REVERSE FOR ELEVATION VIEWS) 1ST NUMBER - HORIZONTAL DIMENSION 2ND NUMBER - VERTICAL DIMENSION		DIRECTION OF THROW ON DIFFUSER

- LENNOX FRESH AIR TEMPERING SETUP**
- INSTALL FRESH AIR TEMPERING KIT WIRING HARNESS AS RECOMMENDED BY LENNOX.
 - LOCATE SUPPLY AIR TEMPERATURE SENSOR IN SUPPLY DUCT DOWNSTREAM OF FIRST ELBOW. SECURE WIRING TO DUCT OR STRUCTURE WITH RUBBER COATED CLAMPS. DO NOT RUN WIRING INSIDE DUCT WORK. PROTECT ALL WIRING PENETRATIONS WITH RUBBER GROMMETS.
 - CHANGE ROOFTOP UNIT ECTO PARAMETER 6.20 TO A VALUE OF 145. THIS WILL PREVENT THE SUPPLY AIR TEMPERATURE FROM DROPPING BELOW 66F DEG DURING HEATING MODE WHEN THERMOSTAT IS NOT ACTIVELY CALLING FOR HEAT. ECTO PARAMETER 6.20 MUST BE CHANGED TO ACTIVATE THE FRESH AIR TEMPERING FEATURE.
 - CHANGE ROOFTOP UNIT ECTO PARAMETER 6.21 TO A VALUE OF 21 WHICH WILL MAKE THE DEADBAND VALUE EQUAL 14F.
 - CHANGE ROOFTOP UNIT ECTO PARAMETER 6.22 TO A VALUE OF 37 WHICH WILL MAKE THE CYCLE TIME VALUE EQUAL 5 MINUTES.

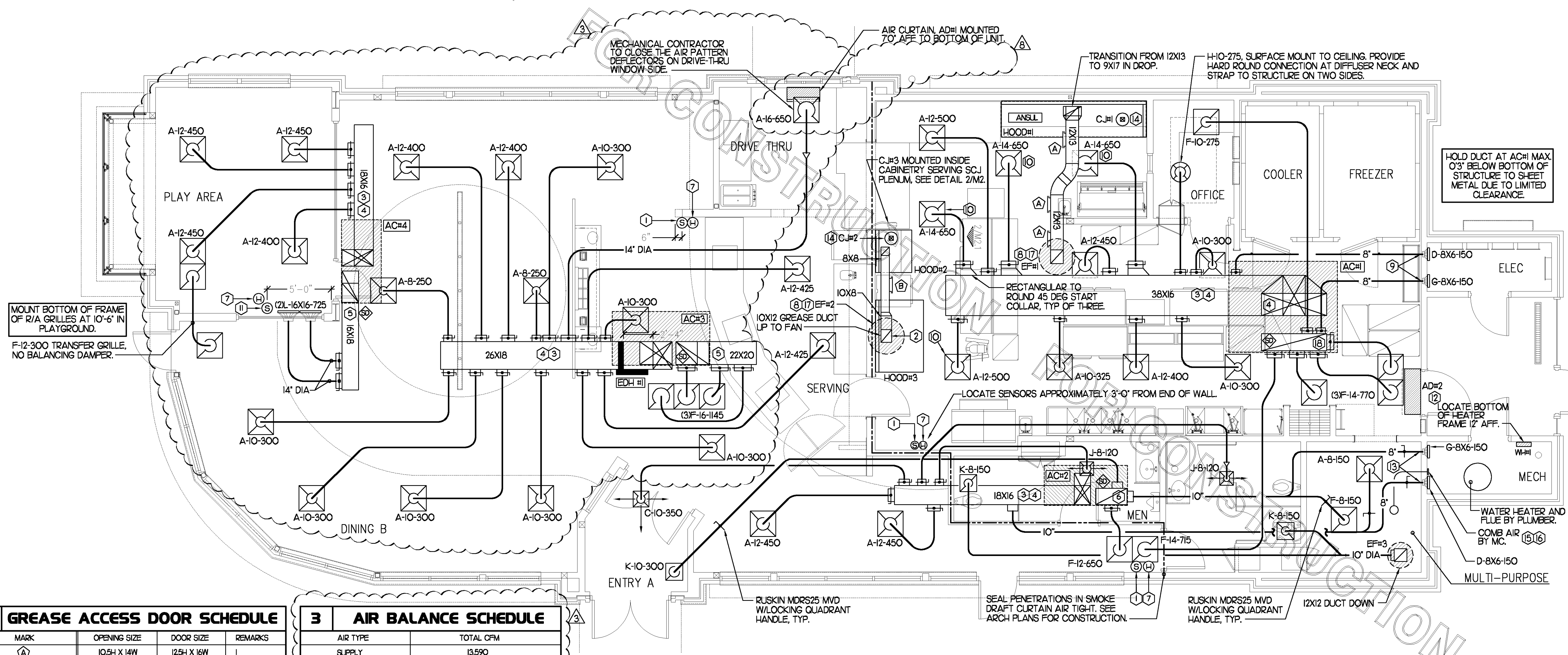
MECHANICAL EQUIPMENT COMPONENTS EARTHQUAKE LOAD RESISTANCE

LISTING OF EQUIPMENT AND SYSTEM COMPONENTS	SEISMIC USE GROUP (U)				SEISMIC DESIGN CATEGORY (D)			COMMENTS
	ANCHORAGE TO FLOORS, ROOFS, ETC.		SWAY BRACING		LOCATION OF PROFESSIONALLY SEALED ANCHORAGE AND SWAY BRACING DETAILS			
	Not Provided For Project	Provided For Project	Not Provided For Project	Provided For Project	ON CONST DOCUMENTS	SUBSEQUENT SUBMITTAL		
FIRE PROTECTION DETECTION & ALARM EQUIPMENT SYSTEM COMPONENTS					Drawing No. or Spec Section	Shop Drawings	Separate Permit & Plans	1
GREASE EXHAUST SYSTEMS					4/M3-2, 6/M3-2, 7/M3-2, 8/M3-2			2
OTHER EQUIPMENT & SYSTEM COMPONENTS NEEDED FOR CONTINUED OPERATION OF SEISMIC USE GROUP III FACILITIES OR WHOSE FAILURE COULD IMPAIR THEIR CONTINUED OPERATION								1
AIR TERMINAL DEVICES RR EXHAUST FAN ROOFTOP UNITS REFRIGERATION COND UNITS A/C DUCT					1/M3-1 5/M3-2 8/M3-1, 1/M3-2 2/M3-2, 3/M3-2 N/A			3 4 5 6

NOT APPLICABLE TO THIS PROJECT.
 1) IP = 15 FOR GREASE EXHAUST SYSTEMS.
 2) AIR TERMINAL DEVICES ARE SECURED TO THE GRID.
 3) UNIT WEIGHT LESS THAN 400 LBS. FLEXIBLE CONNECTOR PROVIDED.
 4) ROOFTOP UNIT ATTACHMENTS PROVIDED.
 5) REFRIGERATION UNITS AND RACK ATTACHMENTS PROVIDED.
 6) A/C DUCT IS LESS THAN 6 SQ FT.

SHEET NOTES

- DUCT SIZES SERVING DIFFUSERS AND GRILLES ARE SAME SIZE AS DIFFUSER OR GRILLE NECK UNLESS NOTED OTHERWISE.



4 GREASE ACCESS DOOR SCHEDULE

MARK	OPENING SIZE	DOOR SIZE	REMARKS
A	10.54 X 14W	12.54 X 16W	I
B	5.54 X 14W	7.54 X 16W	I

ACCESS DOORS SHALL BE U.L. 1978 LISTED OR FIELD FABRICATED, REQUIRE NO TOOLS FOR REMOVAL AND MEET THE REQUIREMENTS OF THE CURRENT EDITION OF THE IBC. ACCESS DOOR ASSEMBLY SHALL BE WELDED IN PLACE TO THE GREASE EXHAUST DUCT AND THE ACCESS DOOR SHALL BE SECURED WITH THUMB SCREWS. ACCESS DOORS SHALL BE SEALED WITH A MINIMUM 1500 DEGREE GASKET MATERIAL EQUIVALENT TO THAT MANUFACTURED BY BRETON INDUSTRIES, INC (800) 382-2491.

3 AIR BALANCE SCHEDULE

AIR TYPE	TOTAL CFM
SUPPLY	13,590
RETURN	9,585
EXHAUST	3,400
OUTSIDE AIR	4,005
BUILDING POSITIVE PRESSURE	605

MECHANICAL FLOOR PLAN
1/4"=1'-0"

5200 Buffington Rd.
Atlanta Georgia,
30349-2998

Revisions:

Mark	Date	By
42	7/15/2010	BUILDING AND HEALTH
48	9/2/2010	OWNER CHANGES

BENNER ENGINEERING, LLC
 9000 Longfibre Road
 Building 2400
 Norcross, GA 30071
 (770) 729-1422 bus
 (770) 729-0430 fax
 contact@bennereng.com

STORE: 2665
Chick-fil-A
FSU S08N104

11997 Manchester Rd
Des Peres, MO 63131

SHEET TITLE
MECHANICAL FLOOR PLAN

VERSION: 4
ISSUE DATE: 7-2009

Job No. : 10038
Store : 2665
Date : 5/27/10
Drawn By : JL/RW
Checked By : RDB

Sheet

M-11