

**Report By:**

National TAB  
1329 E. KEMPER ROAD  
SUITE 4210  
CINCINNATI, OH 45246



**Report: TAB REPORT**  
**Function: Test, Adjust, & Balance**  
**Date: 10/14/2025**  
**Completed By: National TAB**

**PROJECT**  
**10-06-25 QT #1423 TOLLESON, AZ**

1201 N. 91ST AVE

TOLLESON, AZ

**Client**

QUIKTRIP  
4705 SOUTH 129TH EAST AVENUE  
TULSA, OK 74134

# National TAB

Project: 10-06-25 QT #1423 TOLLESON, AZ

## Table Of Contents

Section	Page #
SUMMARY	3
REMARKS	4
BALANCE SCHEDULE	8
CHECKLISTS	10
AHU/RTU	16
FAN - Exhaust	25
Kitchen Hood Type I	29
GRD	31



## Project Summary

### Project Summary

The summary below provides a quick understanding of our scope of work and general testing procedures. Enclosed in the report are further details about your building performance including recommendations, asset data, and pictures. Our focus is to work with the trades to remedy any issues or deficiencies during the actual field balancing and not after the balancing has occurred to achieve a positive environment and outcome. The level of success is determined by the availability of the trades, possible parts needed, or time constraints.

### RTU's (Roof Top Units)

Each of the RTU's was measured with a flow hood to establish total flow. The total flow was then adjusted via the VFD so that airflow fell within design tolerances. All diffusers on the kitchen RTU were balanced to the engineer's design flow. The diffusers on the sales floor were only adjusted when there were noticeable issues present like drafting or dampers that were found completely closed. The Hoods On outside air rate was set by first establishing the typical QT set point at the Emerson controller and then making manually adjustments on the roof. The hoods off airflow setpoint was found by adjusting the damper position at the Emerson controller until the design airflow was achieved. Outside air was measured by reading the intake air opening with a velocity grid and multiplying by the free area. After completion of TAB all overrides were released.

### Kitchen Exhaust Hood & Associated Fans

The kitchen exhaust fan was measured at the hood filter bay utilizing a velocity matrix and a manufacturer's correction factor. Each filter velocity is multiplied by the manufacturer's corrected area. The sum of these readings equals the total flow of the exhaust fans. The total flow of the exhaust was then adjusted to within tolerance of the design flow.

### Restroom Exhaust Fans

The restroom exhaust fans were measured with a flow hood. The total flow was balanced for the fan with the exception of the new grille over the combi-oven which was balanced to the design.

### Final Building Tests

After completing the test and balance the final building pressure was measured. It was confirmed that the building pressure fell within acceptable tolerances and that the pressure measurement coincides with the actual and design net airflow. Any deviations from these standards are noted throughout the report. The hood capture was tested at the perimeter of the hood and the cook top level with the equipment heat on to ensure satisfactory hood capture and containment.

## Issue List

- DIRTY FINAL FILTERS
- EF1 IMPROPER INSTALL - CAUSED MALFUNCTION
- EF1 TOO HIGH ON LOWEST SETTING



**10-06-25 QT #1423 TOLLESON, AZ**

**Project Issue Information**

**Issue Name :** DIRTY FINAL FILTERS  
**Description :** All unit filters appear to be past change date and dirty. Picture added to RTU1 General section.  
**Created By :** National TAB                      **Assigned To :** National TAB - Dan Hertenstein  
**Status :** Closed  
**Priority :** InfoOnly                                      **Asset Tag :** RT-3  
**Originated Date :** 10/14/2025 - Christine Weale - National TAB

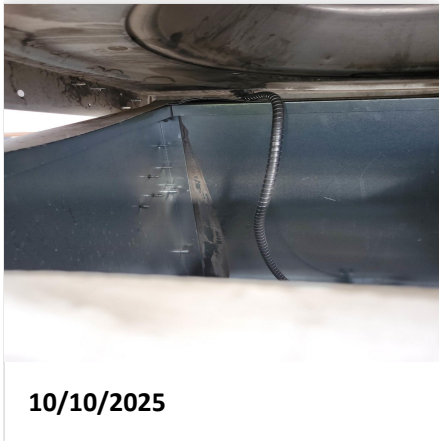


10-06-25 QT #1423 TOLLESON, AZ

**Project Issue Information**

**Issue Name :** EF1 IMPROPER INSTALL - CAUSED MALFUNCTION  
**Description :** The electrical conduit/hinge was improperly installed, so that when the unit was tilted by the hinge, the conduit was bent, there was a pop, and the motor stopped. UPDATE : Wire which was pulled loose fixed, conduit repaired and lengthened.  
**Created By :** National TAB                      **Assigned To :** National TAB - Dan Hertenstein  
**Status :** Closed  
**Priority :** Urgent                                      **Asset Tag :** EF1  
**Originated Date :** 10/10/2025 - Christine Weale - National TAB

Project Issue File Details





**10-06-25 QT #1423 TOLLESON, AZ**

**Project Issue Information**

**Issue Name :** EF1 TOO HIGH ON LOWEST SETTING  
**Description :** EF1 motor's speed controller was turned down to lowest point, still running at 4.0A and twice the air flow. 4.0A is too high for a low setting, recommend checking power supply to motor or checking wiring for HI vs. LO volts. 1.5 - 2.7A is typical. Not anticipated to cause any building issues.  
**Created By :** National TAB                      **Assigned To :** National TAB - Dan Hertenstein  
**Status :** Closed  
**Priority :** Low                                      **Asset Tag :** EF1  
**Originated Date :** 10/17/2025 - Christine Weale - National TAB

**National TAB**

**Project: 10-06-25 QT #1423 TOLLESON, AZ**

- [Open QT\\_1423\\_BalSched.xlsx](#)

### AIR BALANCE SCHEDULE

UNIT	AREA SERVED	HOOD ON OA		HOOD OFF OA		HOOD ON EXHAUST		HOOD OFF EXHAUST	
		DESIGN	ACTUAL	DESIGN	ACTUAL	DESIGN	ACTUAL	DESIGN	ACTUAL
RTU 1	SALES	800	804	350	385				
RTU-2	SALES	800	832	350	346				
RTU-3	BOH/KITCHEN	800	770	350	355				
EF-1	RR/JANITOR					750	1387	750	1387
EF-3	HOOD					1350	1435	0	268
<b>TOTALS</b>		2400	2406	1050	1086	2100	2822	750	1655

#### HOODS ON

##### NET AIRFLOW CALCULATION

TOTALS	DESIGN	ACTUAL
TOTAL OA	2400	2406
TOTAL EXHAUST	2100	2822
<b>NET AIRFLOW</b>	300	-416

DOOR TESTED	BUILDING PRESSURE MEASUREMENTS
FRONT	0.003
SIDE	0.009
REAR	0.007
<b>AVERAGE</b>	<b>0.0063</b>

#### HOODS OFF

##### NET AIRFLOW CALCULATION

TOTALS	DESIGN	ACTUAL
TOTAL OA	1050	1086
TOTAL EXHAUST	750	1655
<b>NET AIRFLOW</b>	300	-569

DOOR TESTED	BUILDING PRESSURE MEASUREMENTS
FRONT	0.006
SIDE	0.003
REAR	0.009
<b>AVERAGE</b>	<b>0.006</b>

NOTES:

## CheckList List

- 01: RTU's/AHU's
- 02: Exhaust Fans
- 03: Hoods
- 04: Final Tests



10-06-25 QT #1423 TOLLESON, AZ

CheckList Information

**Name :** 01: RTU's/AHU's **Status :** Completed

**Assigned Organization :** National TAB **Asset :**

**Requesting Organization :** National TAB

**Created Date :** 09/16/2025 - Trinity Dodds - National TAB

**Completed Date :** 10/15/2025 - Christine Weale - National TAB

CheckList Item Details

RTU's/AHU's

Evaporator coils are clean?	Pass
-----------------------------	------

Comment:

Condenser coils are clean?	Pass
----------------------------	------

Comment:

Gas piping is installed and valves are turned on?	Pass
---	------

Comment:

Unit free of noticeable noise and vibration	Pass
---	------

Comment:



10-06-25 QT #1423 TOLLESON, AZ

CheckList Information

**Name :** 02: Exhaust Fans **Status :** Completed

**Assigned Organization :** National TAB **Asset :**

**Requesting Organization :** National TAB

**Created Date :** 09/16/2025 - Trinity Dodds - National TAB

**Completed Date :** 10/15/2025 - Christine Weale - National TAB

CheckList Item Details

EF's

<b>Hinge kit installed installed on hood fan?</b>	Pass
---	------

**Comment:**

<b>Flex conduit is long enough so that fan can be completely tilted back?</b>	Pass
---	------

**Comment:**

Flex conduit and hinge installed incorrectly on EF-1 only.

<b>No major leakage around the fan base</b>	Pass
---	------

**Comment:**

<b>Unit is free of noise and vibration</b>	Pass
--	------

**Comment:**



10-06-25 QT #1423 TOLLESON, AZ

CheckList Information

**Name :** 03: Hoods **Status :** Completed

**Assigned Organization :** National TAB **Asset :**

**Requesting Organization :** National TAB

**Created Date :** 09/16/2025 - Trinity Dodds - National TAB

**Completed Date :** 10/15/2025 - Christine Weale - National TAB

CheckList Item Details

HOODS

Hood is free of alarms? Pass

Comment:

Hood is free of damage? Pass

Comment:

End panels are installed per prototype? Pass

Comment:



10-06-25 QT #1423 TOLLESON, AZ

CheckList Information

**Name :** 04: Final Tests **Status :** Completed

**Assigned Organization :** National TAB **Asset :**

**Requesting Organization :** National TAB

**Created Date :** 09/16/2025 - Trinity Dodds - National TAB

**Completed Date :** 10/15/2025 - Christine Weale - National TAB

CheckList Item Details

FINAL CHECKS

HOOD CAPTURE TEST

List kitchen equipment turned on for testing

Comment:

Fryer and ovens

List smoke candle type used

Comment:

45s, S102

Smoke test capture % - Perimeter of hood

Comment:

100%

Smoke test capture % - Top of cooking surface

Comment:

100%

WITNESS

Date test was completed

10/10/2025

**Comment:**

---

**TAB tech name / Firm**

**Comment:**

Christine Weale, NTI

---

**Site super name / Firm**

**Comment:**

T-Built

---

**Owner representative name / Firm (if Applicable)**

**Comment:**

---

**BUILDING PRESSURE**

---

**Do actual net building airflow, design net building airflow, and pressure coincide? If not why? (All three should either be positive or negative)**

Pass

**Comment:**

Avg pressure w/ hood on and hood off ~0.006. I'm assuming slightly higher than normal due to non-working EF1.

# National TAB

Project: 10-06-25 QT #1423 TOLLESON, AZ

System/Unit: AHU/RTU



Asset: RT-1

AREA:SALES FLOOR

Unit Data		
	Design	Actual
MFG	NA	AAON
Serial Num	-	202311-ANEK29504
Model Num	NA	RN-013-8-0-A0A-152
Type	-	RTU
Configuration	-	VERTICAL
Num OA Filters 1	-	1
OA Filter Size 1	-	45x22
Num Final Filter 1	-	2
Final Filter Size 1	-	46x19.5x2

Motor Data		
	Design	Actual
Motor MFG	-	NA
Frame	-	NL
Horsepower	-	3.0
Motor Rpm	-	1760
Phase	-	3
Rated Voltage	-	208
Rated Amperage	-	10.6

Drive Data	
	Actual
Motor Sheave Size	DD
Motor Bore Size	DD
Motor Sheave SetPt	DD
Fan Sheave Size	DD
Fan Sheave Bore	DD
Belt CL Distance	DD
Num of Belts	DD
Belt Size	DD
Belt Alignment	DD

Test Data		
	Design	Actual
SF CFM	4200	4279
SF RPM	-	42 HZ
RA CFM	3400	3475
OA CFM	800	804
RL Voltage	-	133.3
RL Amperage	-	7.3
SF Rotation	-	NA
SF System SetPt	-	42 HZ
RA Damper Position	-	54%
Min OA Damper Position	-	46%
Min OA Damper Type	-	ECONOMIZER
OA Enthalpy Setpt	-	NA

Performance Data		
	Design	Actual
MA Plenum SP	-	-0.65"
Fan Suction SP	-	-0.96"
Fan Discharge SP	-	0.34"
Total ESP	-	0.99"
Fan Total SP	-	1.30"

General	
	Actual
Fan Rotation Correct	YES
Unit Filters Clean	NO
Condensate Drain Installed	YES

Completed By: Christine Weale on 10/14/2025

## Unit Data - PHOTO LOG



10/14/2025

## Test Data - PHOTO LOG



10/14/2025

## General - PHOTO LOG



10/14/2025

# National TAB

Project: 10-06-25 QT #1423 TOLLESON, AZ

## AHU/RTU



**Diffuser Supply (GRD)**

**RT-1/SALES FLOOR**

Asset									
Asset Name	Location	Type	Size	DESIGN CFM	AK	CFM(1)	CFM(2)	FINAL CFM	% to design
SGRD1	ENTRANCE	LINEAR	10"	300	1	395	395	395	131.7
SGRD2	SALES	ES	10"	400	1	418	418	418	104.5
SGRD3	SALES	ES	10"	450	1	380	380	380	84.4
SGRD4	SALES	ES	12"	400	1	375	375	375	93.8
SGRD5	SALES	ES	12"	400	1	427	427	427	106.8
SGRD6	SALES	ES	10"	450	1	452	452	452	100.4
SGRD7	SALES	ES	12"	550	1		452	452	82.2
SGRD8	SALES	ES	12"	525	1	497	497	497	94.7
SGRD9	WOMEN'S RR	ES	10"	175	1	198	198	198	113.1
SGRD10	JANITOR AREA	ES	12"	300	1	444	444	444	148.0
SGRD11	MEN'S RR	ES	8"	250	1	241	241	241	96.4
Total				4200		3827	4279	4279	101.88%

# National TAB

Project: 10-06-25 QT #1423 TOLLESON, AZ

System/Unit: AHU/RTU



Asset: RT-2

AREA: SALES FLOOR

Unit Data		
	Design	Actual
MFG	NA	AAON
Serial Num	-	202311-ANEK29503
Model Num	NA	RN-013-8-0-HA0A-152
Type	-	RTU
Configuration	-	VERTICAL
Num OA Filters 1	-	1
OA Filter Size 1	-	45X22
Num Final Filter 1	-	2
Final Filter Size 1	-	46X19.5X2

Motor Data		
	Design	Actual
Motor MFG	-	NA
Frame	-	NL
Horsepower	-	3.0
Motor Rpm	-	1760
Phase	-	3
Rated Voltage	-	208
Rated Amperage	-	10.6

Drive Data	
	Actual
Motor Sheave Size	DD
Motor Bore Size	DD
Motor Sheave SetPt	DD
Fan Sheave Size	DD
Fan Sheave Bore	DD
Belt CL Distance	DD
Num of Belts	DD
Belt Size	DD
Belt Alignment	DD

Test Data		
	Design	Actual
SF CFM	4200	4082
SF RPM	-	42 HZ
RA CFM	3400	3250
OA CFM	800	832
RL Voltage	-	133.0
RL Amperage	-	7.1
SF Rotation	-	NA
SF System SetPt	-	42 HZ
RA Damper Position	-	54%
Min OA Damper Position	-	46%
Min OA Damper Type	-	ECONOMIZER
OA Enthalpy Setpt	-	NA

Performance Data		
	Design	Actual
MA Plenum SP	-	-0.54"
Fan Suction SP	-	-0.83"
Fan Discharge SP	-	0.29"
Total ESP	-	0.83"
Fan Total SP	-	1.12"

General	
	Actual
Fan Rotation Correct	YES
Unit Filters Clean	NO
Condensate Drain Installed	YES

Completed By: Christine Weale on 10/14/2025

Notes:

RTU2 GRD5 was installed in incorrect location, picture shows inaccessible. Air flow was diverted from it for testing, then the damper reopened after balancing.

Written By: Christine Weale on 10/17/2025

## Unit Data - PHOTO LOG



10/14/2025

## Test Data - PHOTO LOG



10/14/2025

# National TAB

Project: 10-06-25 QT #1423 TOLLESON, AZ

## AHU/RTU



**Diffuser Supply (GRD)**

**RT-2/SALES FLOOR**

Asset									
Asset Name	Location	Type	Size	DESIGN CFM	AK	CFM(1)	CFM(2)	FINAL CFM	% to design
SGRD1	ENTRANCE	LINEAR	10"	300	1	338	338	338	112.7
SGRD2	SALES	ES	10"	400	1	392	392	392	98.0
SGRD3	SALES	ES	12"	525	1	521	521	521	99.2
SGRD4	SALES	ES	12"	525	1	567	567	567	108.0
SGRD5	SALES	ES	8"	200	1	--	--		-
SGRD6	SALES	ES	12"	525	1	500	500	500	95.2
SGRD7	SIDE ENTRANCE	ES	10"	300	1	299	299	299	99.7
SGRD8	SALES	ES	12"	525	1	632	632	632	120.4
SGRD9	SERVICE COUNTER	ES	10"	450	1	502	502	502	111.6
SGRD10	SERVICE COUNTER	ES	10"	450	1	331	331	331	73.6
Total				4200		4082	4082	4082	97.19%

# National TAB

Project: 10-06-25 QT #1423 TOLLESON, AZ

System/Unit: AHU/RTU



Asset: RT-3

AREA:BOH/KITCHEN

Unit Data		
	Design	Actual
MFG	NA	AAON
Serial Num	-	202311-ANEK29505
Model Num	NA	RN-013-8-0-HA0A-152
Type	-	RTU
Configuration	-	VERTICAL
Num OA Filters 1	-	1
OA Filter Size 1	-	45X22
Num Final Filter 1	-	2
Final Filter Size 1	-	46X19.5X2

Motor Data		
	Design	Actual
Motor MFG	-	NA
Frame	-	NL
Horsepower	-	3.0
Motor Rpm	-	1760
Phase	-	3
Rated Voltage	-	208
Rated Amperage	-	10.6

Drive Data	
	Actual
Motor Sheave Size	DD
Motor Bore Size	DD
Motor Sheave SetPt	DD
Fan Sheave Size	DD
Fan Sheave Bore	DD
Belt CL Distance	DD
Num of Belts	DD
Belt Size	DD
Belt Alignment	DD

Test Data		
	Design	Actual
SF CFM	4200	4275
SF RPM	-	48 HZ
RA CFM	3400	3505
OA CFM	800	770
RL Voltage	-	170
RL Amperage	-	7.9
SF Rotation	-	NA
SF System SetPt	-	48 HZ
RA Damper Position	-	54%
Min OA Damper Position	-	46%
Min OA Damper Type	-	ECONOMIZER
OA Enthalpy Setpt	-	NA

Performance Data		
	Design	Actual
MA Plenum SP	-	-0.39"
Fan Suction SP	-	0.68"
Fan Discharge SP	-	0.22"
Total ESP	-	0.61"
Fan Total SP	-	0.90"

General	
	Actual
Fan Rotation Correct	YES
Unit Filters Clean	NO
Condensate Drain Installed	YES

Completed By: Christine Weale on 10/14/2025

## Unit Data - PHOTO LOG



10/14/2025

## Test Data - PHOTO LOG



10/14/2025

**National TAB**  
 Project:10-06-25 QT #1423 TOLLESON, AZ  
**AHU/RTU**



**Diffuser Supply (GRD)**

**RT-3/BOH/KITCHEN**

<b>Asset</b>									
<b>Asset Name</b>	<b>Location</b>	<b>Type</b>	<b>Size</b>	<b>DESIGN CFM</b>	<b>AK</b>	<b>CFM(1)</b>	<b>CFM(2)</b>	<b>FINAL CFM</b>	<b>% to design</b>
SGRD1	SUPPORT SERVICE	SI	12"	800	1	690			-
SGRD2	SUPPORT SERVICE	SI	12"	800	1	853			-
SGRD3	SUPPORT SERVICE	SI	12"	800	1	913			-
SGRD4	SUPPORT SERVICE	SI	12"	800	1	808			-
SGRD5	WORKROOM	ES	10"	500	1	520			-
SGRD6	WORKROOM	ES	10"	500	1	491			-
<b>Total</b>				4200		4275	0	0	0%

# National TAB

Project: 10-06-25 QT #1423 TOLLESON, AZ

System/Unit: FAN - Exhaust



Asset: EF1

AREA:RR/JANITOR

Unit Data		
	Design	Actual
MFG	NA	CAPTIVEAIRE
Model Num	NA	DR50HFA
Serial Num	-	5608941
Type	-	DOWNBLAST
Configuration	-	VERTICAL

Motor Data		
	Design	Actual
Motor MFG	-	HSSA
Frame	-	NL
Horsepower	-	0.5,0.75
Motor Rpm	-	1625
Phase	-	1
Voltage (rated)	-	115/230
Amperage (rated)	-	5.6/2.8,8.4/4.2
Service Factor	-	1.0

Test Data		
	Design	Actual
CFM	750	1387
Fan RPM	-	NA
Fan Rotation	-	CCW
Motor RPM	-	NA
System SetPt	-	LOW@SPD CTRLR
RL Voltage	-	NA
RL Amperage	-	4.0
Total ESP	-	0.46"
Fan Inlet SP	-	-0.46"
Fan Discharge SP	-	ATMS

Completed By: Christine Weale on 10/16/2025

## Unit Data - PHOTO LOG



10/14/2025

# National TAB

Project: 10-06-25 QT #1423 TOLLESON, AZ

## FAN - Exhaust



**Diffuser Ret/Exh (GRD)**

**EF1/RR/JANITOR**

<b>Asset</b>									
<b>Asset Name</b>	<b>Location</b>	<b>Type</b>	<b>Size</b>	<b>DESIGN CFM</b>	<b>AK</b>	<b>CFM(1)</b>	<b>CFM(2)</b>	<b>FINAL CFM</b>	<b>% to design</b>
EGRD1	MEN'S RR	EE	12"	300	1	830	554	554	184.7
EGRD2	JANITOR'S CLOSET	EE	6"	100	1	185	119	119	119.0
EGRD3	WOMEN'S RR	EE	10"	200	1	562	385	385	192.5
EGRD4	SUPPORT SERVICE	RI	8"	150	1	465	329	329	219.3
Total				750		2042	1387	1387	184.93%

# National TAB

Project: 10-06-25 QT #1423 TOLLESON, AZ  
System/Unit: FAN - Exhaust



Asset: EF3

AREA:KITCHEN HD

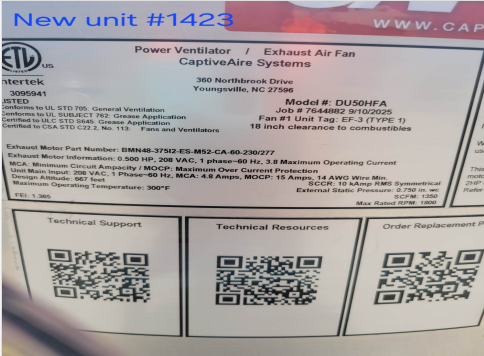
Unit Data		
	Design	Actual
MFG	NA	CAPTIVEAIRE
Model Num	NA	DU50HFA
Serial Num	-	7644879
Type	UPBLAST	UPBLAST
Configuration	VERTICAL	VERTICAL

Test Data		
	Design	Actual
CFM	1350	1435
Fan RPM	-	1326
Fan Rotation	-	CCW
Motor RPM	-	1326
System SetPt	-	69%
RL Voltage	-	216.3
RL Amperage	-	NA
Total ESP	-	0.39"
Fan Inlet SP	-	-0.39"
Fan Discharge SP	-	ATMS

Motor Data		
	Design	Actual
Motor MFG	-	NEMA
Frame	-	NL
Horsepower	1/2	0.5
Motor Rpm	-	1800
Phase	-	1
Voltage (rated)	-	208
Amperage (rated)	-	3.8
Service Factor	-	NL

Completed By: Christine Weale on 10/14/2025

## Unit Data - PHOTO LOG



10/14/2025



10/14/2025

## Test Data - PHOTO LOG



10/14/2025

# National TAB

Project: 10-06-25 QT #1423 TOLLESON, AZ

System/Unit: Kitchen Hood Type I



Asset: HD1

AREA:GRIDDLE

Unit Data		
	Design	Actual
MFG	CAPTIVEAIRE	CAPTIVEAIRE
Model Num	6030ND-2-F	6030ND-2-F
Job / Serial Num	-	7644882
Type	-	TYPE I CANOPY
Hood length	-	108"
Hood Width	-	60"

Test Data Exhaust		
	Design	Actual
Filter Type	-	CAPTRATE SOLO
Filter Size 1	-	16x20
Filter Qty 1	-	6
Filter AK factor size 1	-	2.08
Filter Total AK Area	-	12.48
Filter1 FPM	-	116
Filter2 FPM	-	114
Filter3 FPM	-	119
Filter4 FPM	-	117
Filter5 FPM	-	108
Filter6 FPM	-	114
Filter Ave FPM(corr)	-	115
CFM	1350	1435

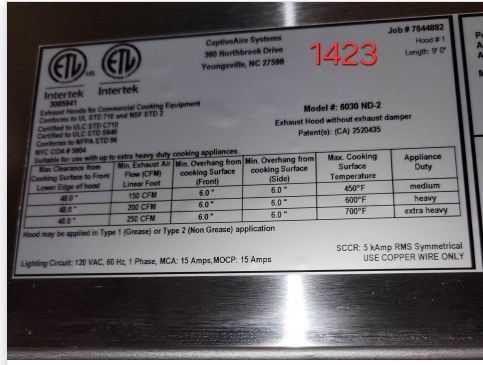
Cooking Equipment	
	Actual
Item 1	FRYER
Item 2	COMBIOVEN

Completed By: Christine Weale on 10/14/2025

# Unit Data - PHOTO LOG



10/14/2025



10/14/2025

**ETL** **ETL**  
 Intertek Intertek  
 CaptiveAir Systems  
 380 NorthBarek Drive  
 Youngsville, NC 27596  
 Job # 7844882  
 Hood # 1  
 Length: 9' 0"  
**1423**  
 Model # 6030 ND-2  
 Exhaust Hood without exhaust damper  
 Patents: (CA) 2526435

Max. Clearance from Cooking Surface to Front Lower Edge of Hood	Min. Exhaust Air Flow (CFM)	Min. Overhang from cooking Surface (front)	Min. Overhang from cooking Surface (side)	Max. Cooking Surface Temperature	Appliance Duty
48.0"	100 CFM	6.0"	6.0"	450°F	medium
48.0"	200 CFM	6.0"	6.0"	600°F	heavy
48.0"	250 CFM	6.0"	6.0"	750°F	extra heavy

Suitable for use with up to extra heavy duty cooking appliances.  
 Exhaust Hoods for Commercial Cooking Equipment  
 Certified to UL STD 719 and NSF STD 1  
 Certified to UL STD 308  
 Complies to NFPA STD 96  
 ETL CCR # 9889  
 Hood may be applied in Type 1 (Grease) or Type 2 (Non Grease) application  
 Lighting Circuit: 120 VAC, 60 Hz, 1 Phase, MCA: 15 Amps, MOCP: 15 Amps  
 SCCR: 5 kVmp RMS Symmetrical  
 USE COPPER WIRE ONLY

