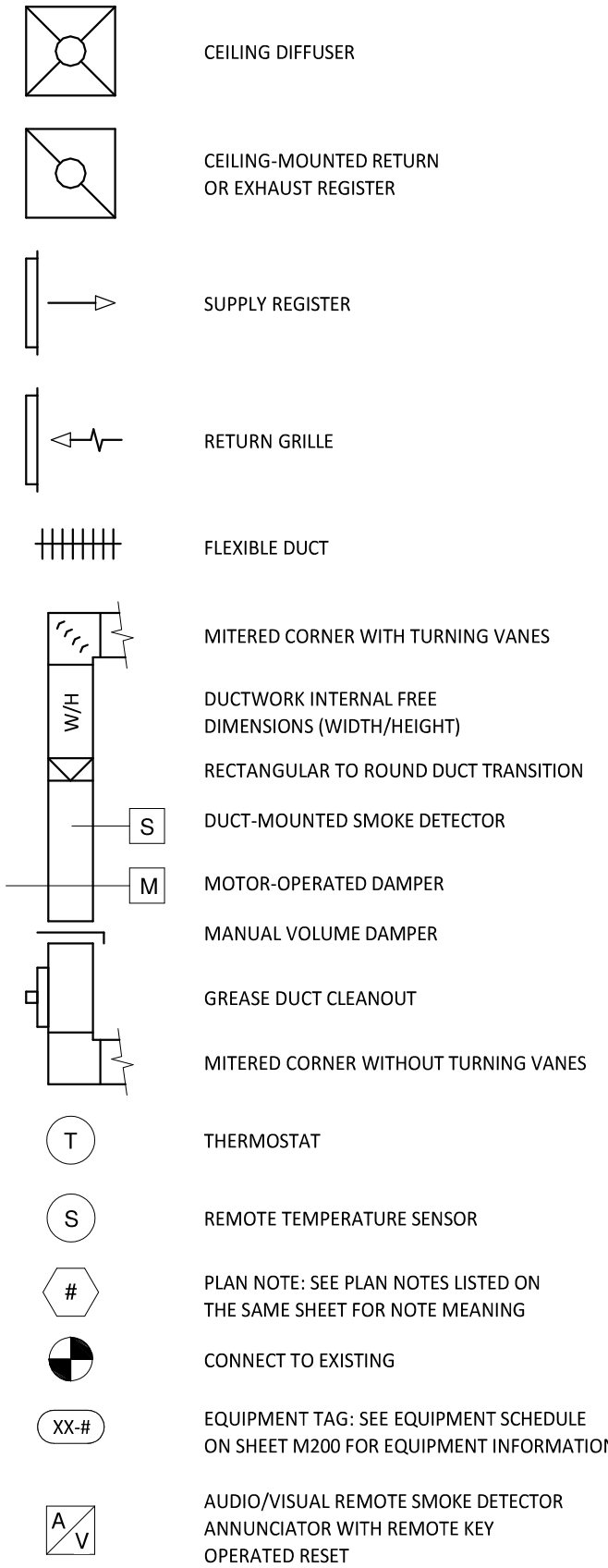


HVAC SYMBOLS



HVAC GENERAL NOTES

- A GENERAL NOTES APPLY TO HVAC SHEETS.
- B WORK SHALL COMPLY WITH STATE AND LOCAL CODE REQUIREMENTS AS APPROVED AND AMENDED BY THE AUTHORITY HAVING JURISDICTION, INCLUDING APPLICABLE SECTIONS OF NFPA, THE MECHANICAL CODE, AND ANY INTERIM AMENDMENTS AT THE TIME OF THE PROPOSAL. PURCHASE PERMITS ASSOCIATED WITH THE WORK. OBTAIN INSPECTIONS REQUIRED BY CODE. SEE SHEET A000 FOR THE PREVAILING CODES.
- C CONTRACTOR AND SUBCONTRACTORS SHALL REVIEW A COMPLETE SET OF THE CONSTRUCTION DOCUMENTS.
- D COORDINATE WORK WITH THE WORK OF OTHER TRADES, EQUIPMENT FURNISHED BY OTHERS, REQUIREMENTS OF THE OWNER, AND OF THE EXISTING CONDITIONS AT THE PROJECT SITE.
- E DRAWINGS FOR THE MECHANICAL WORK ARE DIAGRAMMATIC, SHOWING THE GENERAL LOCATION, TYPE, LAYOUT, AND EQUIPMENT REQUIRED. THE DRAWING SHALL NOT BE SCALED FOR EXACT MEASUREMENTS, REFER TO ARCHITECTURAL DRAWINGS FOR DIMENSIONS. REFER TO MANUFACTURER'S STANDARD INSTALLATION DRAWINGS FOR EQUIPMENT CONNECTIONS AND INSTALLATION REQUIREMENTS. PROVIDE DUCTWORK, CONNECTIONS, OFFSETS, ACCESSORIES, AND MATERIALS NECESSARY FOR A COMPLETE SYSTEM.
- F DUCT DIMENSIONS ON PLANS INDICATE DIMENSIONS OF INTERNAL FREE AREA.
- G PERFORATED CEILING DIFFUSERS SHALL BE 4-WAY UNLESS NOTED OTHERWISE.
- H COORDINATE ROOF WORK WITH THE OWNER'S CONSTRUCTION MANAGER PRIOR TO CONSTRUCTION.
- I UNLESS NOTED OTHERWISE RECTANGULAR DUCT ELBOWS GREATER THAN 45° SHALL BE MITERED ELBOWS WITH DOUBLE-THICKNESS TURNING VANES AND RECTANGULAR DUCT ELBOWS 45° OR LESS SHALL BE RADIUSSED ELBOWS WITH AN INSIDE RADIUS OF AT LEAST 1/2 THE WIDTH OF THE DUCT.
- J REPLACE AIR FILTERS WITH NEW, CLEAN MERV 8 AIR FILTERS AT TURNOVER.
- K THE TERM "FURNISH" MEANS SUPPLY AND DELIVER TO THE PROJECT SITE, READY FOR UNLOADING, UNPACKING, ASSEMBLY, INSTALLATION, AND SIMILAR OPERATIONS. THE TERM "INSTALL" DESCRIBES THE OPERATIONS AT THE PROJECT SITE INCLUDING THE ACTUAL UNLOADING, UNPACKING, ASSEMBLY, ERECTING, PLACING, ANCHORING, APPLYING, WORKING TO DIMENSION, FINISHING, CURING, PROTECTING, CLEANING, AND SIMILAR OPERATIONS. THE TERM "PROVIDE" MEANS TO FURNISH AND INSTALL, COMPLETE AND READY FOR THE INTENDED USE.
- L PROVIDE LABELING CALLED FOR IN THE HVAC DRAWINGS USING ENGRAVED PHENOLIC PLATES.

ABBREVIATIONS

- AFF ABOVE FINISHED FLOOR
- AFG ABOVE FINISHED GRADE
- CD CEILING DIFFUSER
- CU CONDENSING UNIT
- EF EXHAUST FAN
- ER EXHAUST REGISTER
- EXTG EXISTING
- HD HOOD
- MUA MAKEUP AIR UNIT
- OBD BLADE DAMPER
- RG RETURN GRILLE
- RTU ROOFTOP UNIT
- SR SUPPLY REGISTER
- VSC VARIABLE SPEED CONTROL
- CO2AS TENANT'S CO2 ALARM SUPPLIER
- GC GENERAL CONTRACTOR
- HES TENANT'S HVAC EQUIPMENT SUPPLIER
- TAB TENANT'S TEST AND BALANCE VENDOR
- TCC TENANT'S CABLING CONTRACTOR
- KEK TENANT'S KITCHEN EQUIPMENT SUPPLIER
- HS TENANT'S HOOD SUPPLIER
- TLS TENANT'S LIGHT/LAMP SUPPLIER
- TMB TENANT'S MENU BOARD SUPPLIER
- TMS TENANT'S MILLWORK SUPPLIER
- TP TENANT'S PHONE SUPPLIER
- TRS TENANT'S RAILING SUPPLIER
- TSV TENANT'S SIGN VENDOR
- WCS TENANT'S WALK-IN COOLER SUPPLIER

MATERIAL SCHEDULE

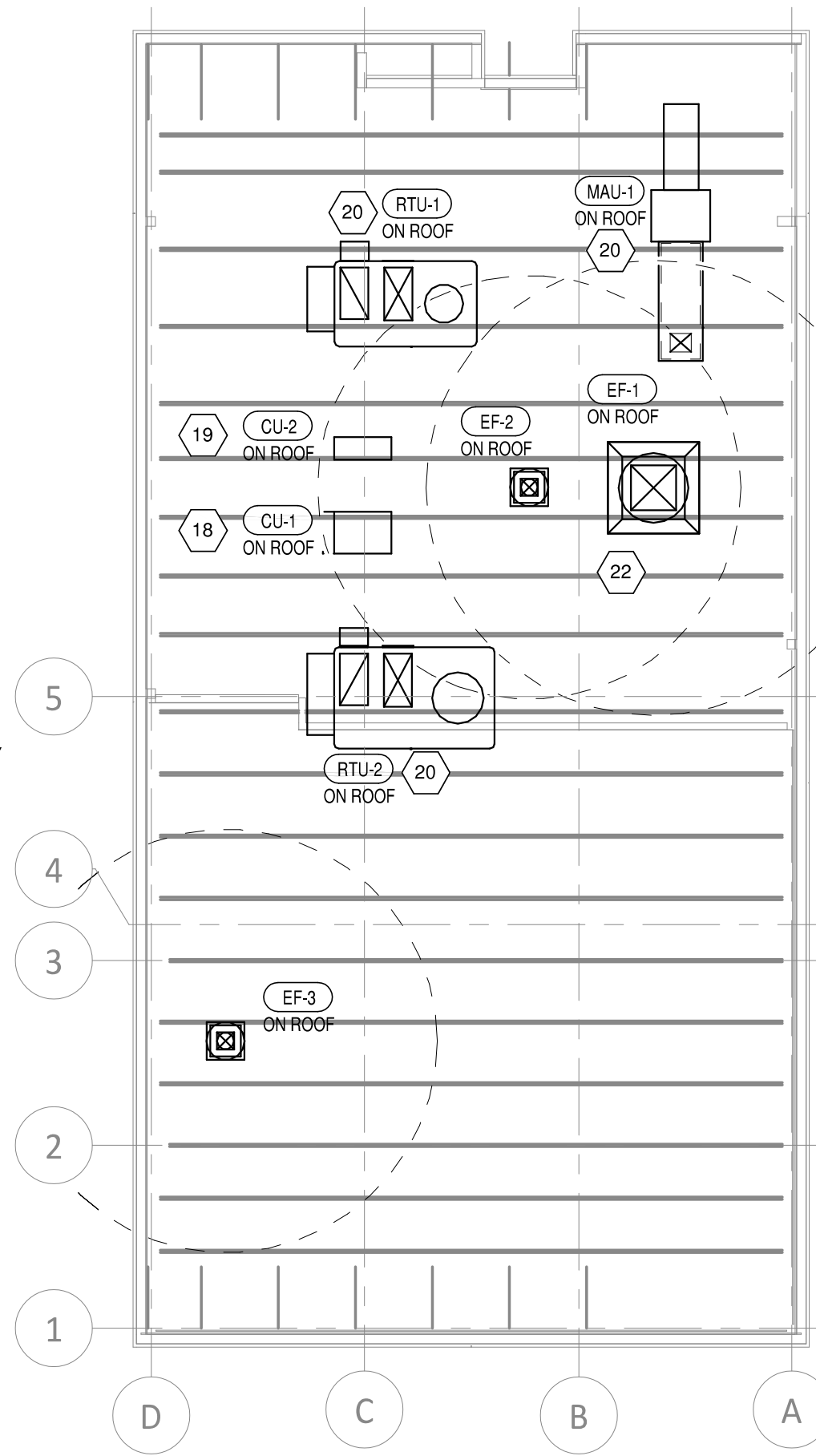
CATEGORY	APPLICATION	ALLOWABLE MATERIAL
DUCT	EXPOSED SUPPLY	RECT. LINED OR ROUND AS SHOWN, GALVANIZED
	EXPOSED RETURN	RECTANGULAR, GALVANIZED
	EXPOSED GEN. EXHAUST	RECTANGULAR, GALVANIZED
	CONCEALED, SUPPLY	RECT. OR ROUND AS SHOWN, LINED OR INSULATED
	CONCEALED, RETURN	RECT. OR ROUND AS SHOWN, LINED OR INSULATED
	CONCEALED, GEN. EXHAUST	RECT. OR ROUND AS SHOWN
	CONCEALED, TYPE I HOOD EXHAUST	RECTANGULAR 16 GA. BLACK IRON W/ WRAP OR UL 1978 FACTORY-MANUFACTURED DUCT W/ WRAP (SUBMIT SHOP DRAWINGS FOR FACTORY-MANUFACTURED DUCT PRIOR TO ORDERING FOR APPROVAL)

GRILLS, REGISTERS, AND DIFFUSERS SCHEDULE

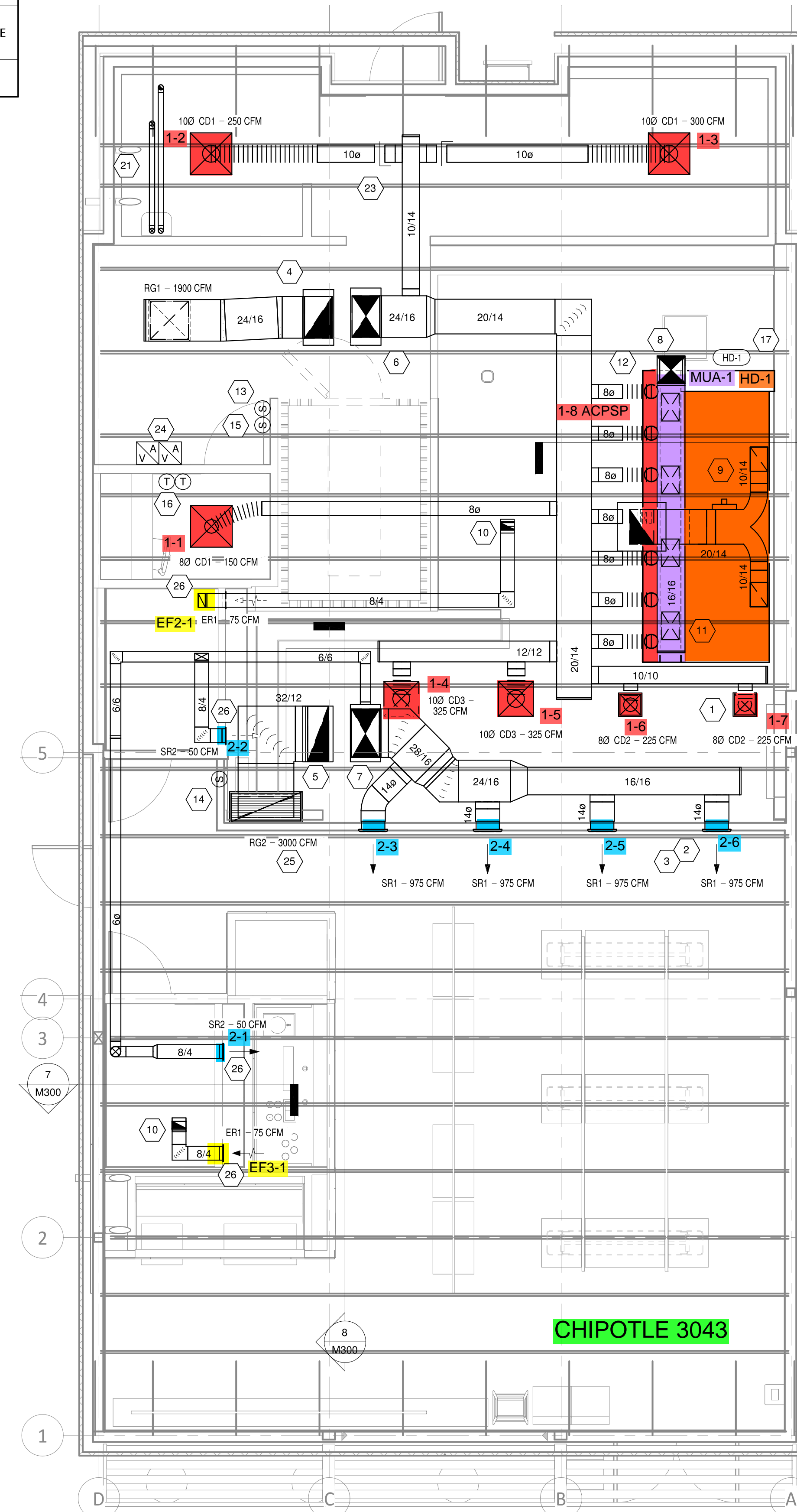
TAG	FURNISHE D BY	INSTALLED BY	MANUFACTURER	MODEL	DESCRIPTION	SIZE	MATERIAL	FINISH	MOUNTING	NOTES
CD1	GC	GC	NAILOR	4320A TYPE L	PERFORATED CEILING DIFFUSER	FACE: 24" x 24" NECK: VARIES	ALUMINUM	WHITE	LAY-IN CEILINGS	PROVIDE INTEGRAL OBD
CD2	GC	GC	NAILOR	4320A TYPE S	PERFORATED CEILING DIFFUSER	FACE: 12" x 12" NECK: 8"φ	ALUMINUM	WHITE	CEILING	PROVIDE INTEGRAL OBD, REMOVE 4-WAY DEFLECTOR
CD3	GC	GC	NAILOR	4320A TYPE S	PERFORATED CEILING DIFFUSER	FACE: 20" x 20" NECK: VARIES	ALUMINUM	WHITE	CEILING	PROVIDE INTEGRAL OBD
ER1	GC	GC	NAILOR	51FH	0" FIXED BLADE RETURN GRILLE	NECK: 8" x 4"	ALUMINUM	WHITE	WALL	PROVIDE INTEGRAL OBD
RG1	GC	GC	NAILOR	4330R TYPE L	PERFORATED CEILING RETURN	FACE: 24" x 24" NECK 22" x 22"	ALUMINUM	WHITE	LAY-IN CEILINGS	
RG2	GC	GC	NAILOR	51FH	0" FIXED BLADE RETURN GRILLE	Neck: 40" x 16"	ALUMINUM	WHITE	Wall	
SR1	GC	GC	SEIHO	NT14	ADJUSTABLE TURBO NOZZLE	NECK: 14"φ	ALUMINUM	WHITE	WALL	PROVIDE FACE-ACCESSIBLE OBD
SR2	GC	GC	NAILOR	51DH	DOUBLE DEFLECTION SUPPLY REGISTER	NECK: 8" x 4"	ALUMINUM	WHITE	WALL	PROVIDE INTEGRAL OBD

PLAN NOTES

- 1 SEE ARCHITECTURAL REFLECTED CEILING PLAN FOR CEILING MOUNTED EQUIPMENT LOCATION. TYPICAL.
- 2 PAINT DUCTWORK VISIBLE THROUGH DINING ROOM SUPPLY REGISTERS BLACK. TYPICAL.
- 3 REFER TO ARCHITECTURAL SHEETS FOR SUPPLY REGISTER ELEVATIONS AND LOCATIONS.
- 4 24/16 DUCT UP FOR TRANSITION TO RTU-1 RETURN CONNECTION IN ROOF CURB. RTU-1 SHALL HAVE AN INTEGRAL SMOKE DETECTOR MOUNTED IN THE RETURN AIR STREAM. INTERLOCK SMOKE DETECTOR TO RTU-1 OPERATION.
- 5 32/12 DUCT UP FOR TRANSITION TO RTU-2 RETURN CONNECTION IN ROOF CURB. RTU-2 SHALL HAVE AN INTEGRAL SMOKE DETECTOR MOUNTED IN THE RETURN AIR STREAM. INTERLOCK SMOKE DETECTOR TO RTU-2 OPERATION.
- 6 24/16 DUCT UP FROM BUILDING SUPPLY THROUGH ROOF. TRANSITION TO RTU-1 SUPPLY CONNECTION IN ROOF CURB.
- 7 28/16 DUCT UP FROM BUILDING SUPPLY TO RTU-2 SUPPLY CONNECTION. TRANSITION IN ROOF CURB.
- 8 16/16 DUCT UP THROUGH ROOF. TRANSITION TO MAU-1 SUPPLY CONNECTION IN ROOF CURB. COORDINATE DUCT LOCATION WITH CEILING ACCESS PANEL SO THAT SUPPLY DUCT DOES NOT INTERFERE WITH ACCESS TO THE TOP OF THE HOOD.
- 9 10/14 DUCTS UP FROM HOOD TO 20/14 DUCT THROUGH ROOF TO EF-1. COMPLIANT WITH NFPA 96. PROVIDE RADIUSSED ELBOWS WITH AN INSIDE RADIUS OF 0.5W AT ELBOWS IN GREASE DUCT.
- 10 8/4 DUCT UP THROUGH ROOF TO EF-2 AND EF-3.
- 11 16/10 DUCT DOWN TO MAKEUP AIR PSP DUCT CONNECTION. TRANSITION TO SUPPLY PLENUM OPENING SIZE. TYPICAL FOR 4.
- 12 8" DIA. DUCT DOWN TO AC PSP DUCT CONNECTION. TRANSITION TO SUPPLY PLENUM OPENING SIZE. TYPICAL. CAP UNUSED DUCT CONNECTIONS.
- 13 INSTALL REMOTE TEMPERATURE SENSOR FOR RTU-1 AT THIS LOCATION 60" AFF. COORDINATE LOCATION WITH EQUIPMENT.
- 14 INSTALL REMOTE TEMPERATURE SENSOR FOR RTU-2 AT THIS LOCATION 60" AFF. COORDINATE LOCATION WITH EQUIPMENT AND WALL MOUNTED ARTWORK.
- 15 INSTALL REMOTE TEMPERATURE SENSOR FOR HOOD HD-1 AT THIS LOCATION 60" AFF. COORDINATE LOCATION WITH EQUIPMENT. PROVIDE (2) #18 G. THERMISTOR CABLE FROM TEMPERATURE SENSOR TO HOOD CONTROL PANEL.
- 16 INSTALL "LIGHTSTAT" THERMOSTATS FOR RTU-1 AND RTU-2 AT THIS LOCATION AT 48" AFF. COORDINATE WITH ELECTRICAL SWITCHING IN THIS AREA AND EXTEND WIRING TO REMOTE TEMPERATURE SENSORS AND ROOFTOP UNITS. LABEL EACH THERMOSTAT ACCORDINGLY. COORDINATE THERMOSTAT LOCATION WITH WALL-MOUNTED EQUIPMENT SO THAT THERMOSTATS ARE NOT BLOCKED BY SHELVING, COAT RACKS, OR DOORS.
- 17 INSTALL KITCHEN HOOD, HD-1. SUPPORT HOOD PER MANUFACTURER'S INSTALLATION INSTRUCTIONS. INSTALL HOOD ACCORDING TO THE REQUIREMENTS OF ITS LISTING, IN COMPLIANCE WITH NFPA 96, THE BUILDING CODE, AND AUTHORITIES HAVING JURISDICTION. HOOD SHALL HAVE AN INTEGRAL DUCT COLLAR TEMPERATURE SENSOR TO AUTOMATICALLY ENERGIZE THE EXHAUST AND MAKEUP AIR FANS IF COOKING TEMPERATURES ARE DETECTED. EXHAUST DUCT SYSTEM TO BE WELDED OR FACTORY-MANUFACTURED WATER AND AIR TIGHT. INSTALL CLEANOUTS PER CODE AND AS SHOWN. INSTALL HOOD PER DETAILS 4, AND 5/M300. CHIPOTLE WILL PROVIDE AN INDEPENDENT TESTING AGENCY FOR TESTING THE INTEGRITY OF THE GREASE DUCT SYSTEM.
- 18 INSTALL REMOTE CONDENSING UNIT FOR WALK-IN COOLER ON ROOF. INSTALL REFRIGERANT LINE SET, THERMOSTATIC EXPANSION VALVE, SOLENOID VALVE, TEMPERATURE CONTROL, SIGHT GLASS, FILTER DRIER, PRESSURE CONTROL, LOW AMBIENT CONTROLS, AND WEATHERPROOF HOUSING. TRAP AND SLOPE REFRIGERANT LINES PER MANUFACTURER'S RECOMMENDATIONS. INSTALLATION SHALL COMPLY WITH ASHRAE/ANSI STANDARD 15. INSTALL THE REFRIGERANT LINE SET UNDER THE ROOF DECK TO WITHIN 3' OF THE CONDENSING UNIT. CUT 2-1/2" HOLE IN WALK-IN COOLER ROOF FOR REFRIGERANT LINE SET AND SEAL PER THE COOLER MANUFACTURER'S INSTALLATION INSTRUCTIONS AFTER LINE SET IS INSTALLED.
- 19 INSTALL REMOTE CONDENSER FOR ICE MACHINE ON ROOF. INSTALL REFRIGERANT LINE SET, THERMOSTATIC EXPANSION VALVE, SOLENOID VALVE, TEMPERATURE CONTROL, SIGHT GLASS, FILTER DRIER, PRESSURE CONTROL, LOW AMBIENT CONTROLS, AND WEATHERPROOF HOUSING. TRAP AND SLOPE REFRIGERANT LINES PER MANUFACTURER'S RECOMMENDATIONS. INSTALLATION SHALL COMPLY WITH ASHRAE/ANSI STANDARD 15. INSTALL THE REFRIGERANT LINE SET UNDER THE ROOF DECK TO WITHIN 3' OF THE REMOTE CONDENSER. IF REFRIGERANT PIPING TO ICE MAKER IS EXPOSED TO PUBLIC VIEW CONCEAL WITHIN A STAINLESS STEEL SHROUD AS SHOWN IN THE ARCHITECTURAL DRAWINGS.
- 20 INSTALL ROOFTOP EQUIPMENT PER MANUFACTURER'S INSTALLATION INSTRUCTIONS.
- 21 PROVIDE WATER HEATER COMBUSTION AIR AND FLUE VENTS THROUGH THE ROOF PER DETAIL 1/P300. MAINTAIN 10' MINIMUM SEPARATION BETWEEN FLUE VENT AND VENTILATION AIR INTAKES. TERMINATE PER THE WATER HEATER MANUFACTURER'S INSTALLATION INSTRUCTIONS.
- 22 INSTALL EXHAUST FAN EF-1 PER DETAIL 6/M300. INSTALL GREASE VIRGUARD SYSTEM FURNISHED BY CHIPOTLE ON EXHAUST FAN, EF-1.
- 23 PROVIDE SUPPLY DIFFUSER CONNECTION TO SUPPLY SYSTEM PER DETAIL 1/M300. TYPICAL.
- 24 PROVIDE AUDIO/VISUAL REMOTE SMOKE DETECTOR ANNUNCIATOR WITH REMOTE KEY OPERATED RESET. WIRE A UNIT BACK TO EACH SMOKE DETECTOR. MOUNT UNIT 60" AFF. TYPICAL.
- 25 INSTALL RETURN GRILLE IN TOP OF JOIST SHELVE. FACING THE DECK SO CONCEALED FROM VIEW FROM THE DINING ROOM.
- 26 PROVIDE SUPPLY AND EXHAUST REGISTERS CONCEALED IN RESTROOM COVE AS SHOWN IN SECTION 7/M300.



HVAC ROOF PLAN
1/8" = 1'-0"



HVAC FLOOR PLAN
1/4" = 1'-0"



788 Morrison Road
Columbus, Ohio 43230
Phone: (614) 751-9610
Fax: (614) 552-5240
Contact: Josh Everett
(614) 328-2029
jeverett@nationalengineering.com



Signed 10/11/2016
Expires 12/31/2017

COPYRIGHT 2016
THIS DRAWING IS AN INSTRUMENT OF SERVICE AND AS SUCH REMAINS THE PROPERTY OF CHIPOTLE MEXICAN GRILL, INC. PERMISSION FOR USE OF THIS DOCUMENT IS LIMITED AND CAN BE EXTENDED ONLY BY WRITTEN AGREEMENT WITH CHIPOTLE MEXICAN GRILL, INC.



CHIPOTLE MEXICAN GRILL, INC.
1401 WYNWOOD STREET, SUITE 500
DENVER, COLORADO 80202
TELEPHONE: (303) 595-4000
FAX: (303) 595-4034
INTERNET: WWW.CHIPOTLE.COM

STORE NO.: 3043
1-19 & IRVINGTON
1-19 & IRVINGTON RD.
TUSCON, AZ 85714

Issue Record
10.11.2016 LL Set
10.18.2016 Permit Set

Revisions:

Drawn: JAE
Checked: MPC

Project No:
1601099

Contents:

HVAC PLAN

M100

Date of Last Print:
10.18.2016

