

FOR QUESTIONS, CALL THE
 Highwoods Group
 REGION 40
 PHONE: (919) 875-0420
 EMAIL: reg40@captiveaire.com

EXHAUST FAN INFORMATION - JOB#5561283

FAN UNIT NO	TAG	QTY	FAN UNIT MODEL #	MANUFACTURER	CFM	ESP	RPM	MOTOR ENCL	HP	BHP	PHASE	VOLT	FLA	WEIGHT (LBS)	SDNES
1	EF-2	1	DR12HFA	CAPTIVEAIRE	150	0.600	1339	TEAD-ECM	0.250	0.0970	1	115	2.9	49	7.8

FAN OPTIONS

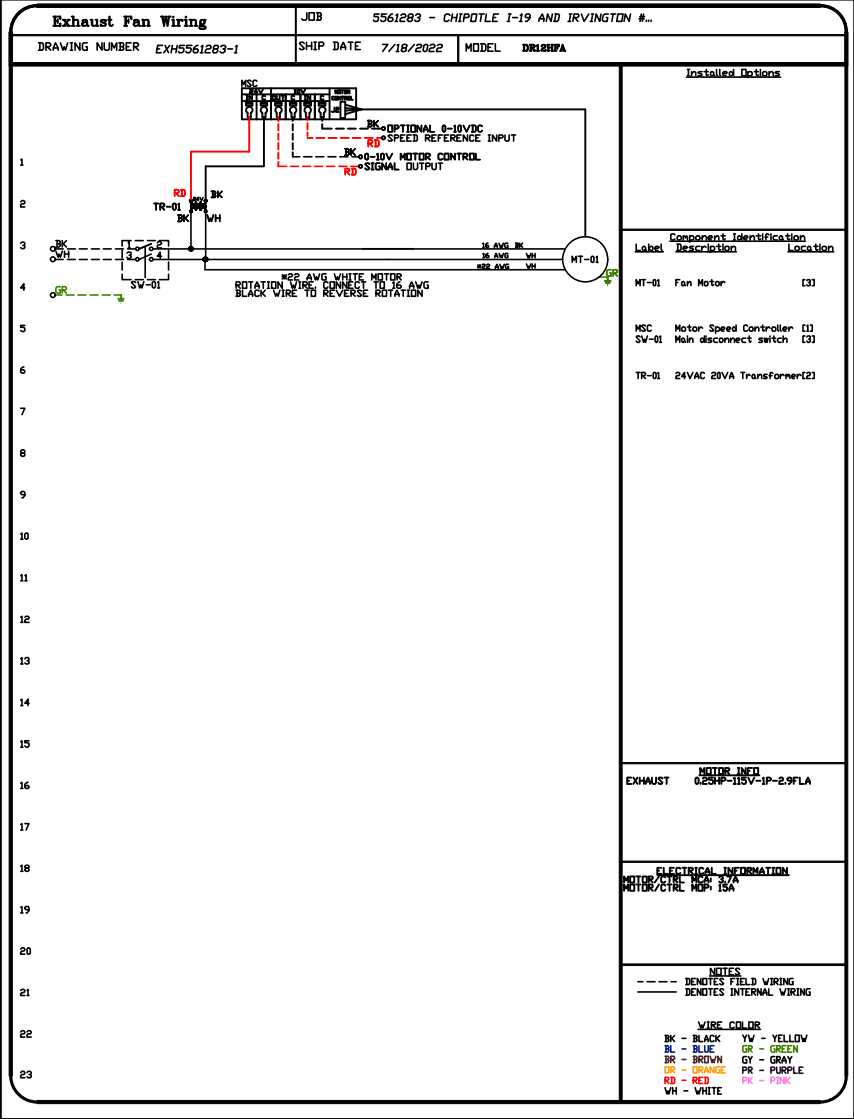
FAN UNIT NO	TAG	QTY	DESCRIPTION
1	EF-2	1	ECM WIRING PACKAGE - EXHAUST - MANUAL OR 0-10VDC REFERENCE SPEED CONTROL -MSC- (TELCD), CCW ROTATION
		1	I 12-BDD DAMPER
		1	2 YEAR PARTS WARRANTY

FAN ACCESSORIES

FAN UNIT NO	TAG	EXHAUST			SUPPLY			
		GREASE CUP	GRAVITY DAMPER	WALL MOUNT	SIDE DISCHARGE	GRAVITY DAMPER	MOTORIZED DAMPER	WALL MOUNT
1	EF-2		YES					

CURB ASSEMBLIES

NO	ON FAN	TAG	WEIGHT	ITEM	SIZE
1	# 1	EF-2	31 LBS	CURB	17.500"W X 17.500"L X 26.000"H ALONG LENGTH, RIGHT.



submittal review

This submittal review is only for general compliance with the project design concept. WD Partners assumes no responsibility for correctness of details, dimensions, or compliance with the construction documents and specifications.

No substitutions or deviations may be made from the construction documents and specifications without prior written approval by the Owner or WD Partners. No approval for substitutions/deviation is given or implied by WD Partners' submittal review. Items other than those specified are installed at Contractor's risk and are subject to removal and replacement at Contractor's own expense regardless of comments made during this review.

- | | |
|--|---|
| <input type="checkbox"/> REVIEWED/FURNISH AS SUBMITTED | <input type="checkbox"/> REJECTED |
| <input checked="" type="checkbox"/> REVIEWED/FURNISH AS NOTED | <input type="checkbox"/> SUBMIT PROPER ITEM |
| <input type="checkbox"/> REVIEWED/REVISE AND RESUBMIT AS NOTED | <input type="checkbox"/> NOT REVISED |
| <input type="checkbox"/> PRELIMINARY REVIEW/NOT FOR CONSTRUCTION | |

Corrections or comments made on the submittal do not relieve Contractor from compliance with requirements of the construction documents and specifications. The review of a specific item shall not include approval of an assembly of which the item is a component. The Contractor is responsible for confirming and correlating all quantities and dimensions; selecting fabrication processes and the means, methods, sequences, techniques, and procedures of construction; coordinating its work with that of all other trades; and performing its work in a safe and satisfactory manner.

Yasser Zaki **CMGCE0038**
 print name project #
Yasser Zaki **07/22/2022**
 signature date

WD PARTNERS
 7007 DISCOVERY BLVD. DUBLIN, OH 43017
 614.634.7000 T 614.634.7777 F

Comments:

1. Provide integrated Disconnect switch per construction documents equipment schedule.
2. Connect to the same controls device of the demolished exhaust fan.

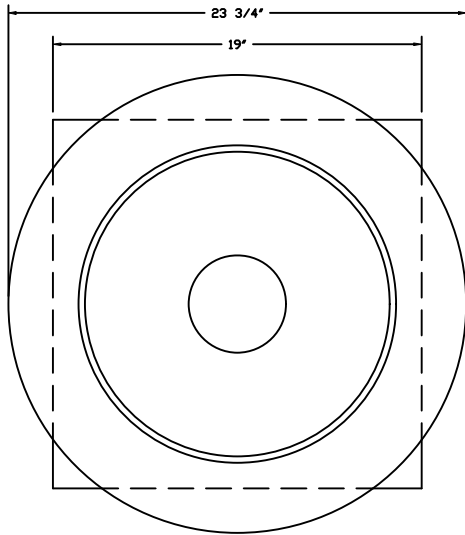
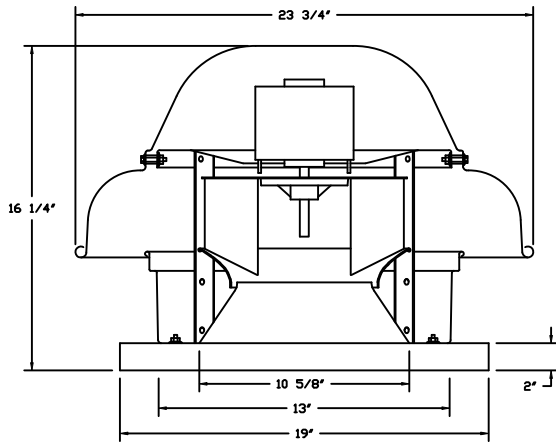


JOB CHIPOTLE I-19 AND IRVINGTON #3043	
LOCATION TUCSON, AZ, 85714	
DATE 7/18/2022	JOB # 5561283
DWG # 1	DRAWN BY JMB-40
REV.	SCALE 3/8" = 1'-0"

wd

WDPARTNERS.COM

FAN #1 DR12HFA - EXHAUST FAN (EF-2) ✓



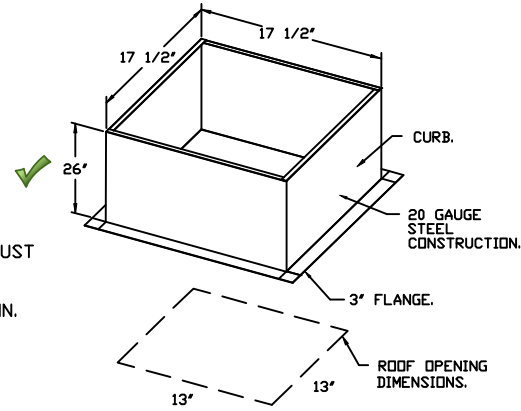
TOP VIEW

FEATURES:

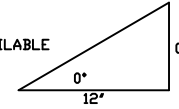
- DIRECT DRIVE CONSTRUCTION (NO BELTS/PULLEYS).
- ROOF MOUNTED FANS.
- UL705.
- SAFETY DISCONNECT.
- STANDARD BIRD SCREEN.
- SPEED CONTROL.

OPTIONS

- ECM WIRING PACKAGE - EXHAUST
- MANUAL OR 0-10VDC REFERENCE SPEED CONTROL
- MSC- (TELCD), CCW ROTATION.
- I 12-BDD DAMPER.
- 2 YEAR PARTS WARRANTY.

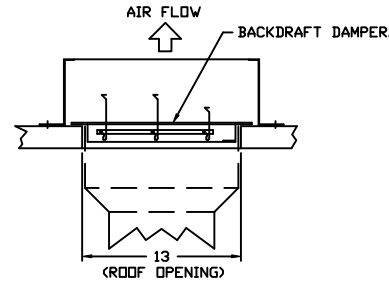


PITCHED CURBS ARE AVAILABLE FOR PITCHED ROOFS.



SPECIFY PITCH:
EXAMPLE: 7/12 PITCH = 30° SLOPE.

BACKDRAFT DAMPER INSTALLATION



CAPTIVEAIR

JOB CHIPOTLE I-19 AND IRVINGTON #3043	
LOCATION TUCSON, AZ, 85714	
DATE 7/18/2022	JOB # 5561283
DWG # 2	DRAWN BY JMB-40
REV.	SCALE 3/8" = 1'-0"