



01 mechanical hvac ceiling plan
SCALE 1/4" = 1'-0"

general notes

1. ALL CURB TO BE LEVELLED AND INSTALLED BY GENERAL CONTRACTOR.
2. ALL ROOF OPENINGS BY GENERAL CONTRACTOR.
3. GENERAL CONTRACTOR SHALL PROVIDE FRAMING AT ALL ROOF OPENINGS. FILED COORDINATE EXACT ROOF OPENINGS WITH G.C.
4. ENDS OF DUCTWORK SHALL BE SEALED FOR STORAGE AND DURING CONSTRUCTION AND ALL MECHANICAL EQUIPMENT ARE TO BE COVERED PER 2014 SHRM 191.18 STANDARDS.
5. ALL CONCEALED HVAC SUPPLY & RETURN DUCTWORK TO BE EXTERNALLY WRAPPED. REFER TO MECHANICAL GENERAL NOTES ON SHEET M0.1 FOR REQUIRED INSULATION.
6. DO NOT INSTALL REMOTE TEMPERATURE SENSORS CLOSE TO COOLER, HEAT PRODUCING APPLIANCES OR EQUIPMENT. COORDINATE FINAL LOCATIONS WITH FIT-OUT EQUIPMENT CONTRACTOR.
7. HVAC CONTRACTOR SHALL BE PRESENT ON SITE ON THE DATE OF THE STORE TURNOVER.
8. CONTRACTOR SHALL REPLACE ALL AC FILTERS AFTER FINAL CLEANING AND BEFORE FINAL AIR BALANCE.
9. ALL DUCT DIMENSIONS SHOWN ON DRAWINGS ARE CLEAR INSIDE DIMENSIONS.
10. COORDINATION OF EXACT LOCATIONS SHALL BE PERFORMED ON THE FIELD. THE DRAWINGS ARE NOT INTENDED TO BE SCALED. REFER TO THE ARCHITECTURAL DRAWINGS FOR DIMENSIONS AND LIMITATIONS OF THE BUILDING STRUCTURE OF FINISH AND TO THE MECHANICAL DRAWINGS FOR THE LOCATION OF EQUIPMENT OF THOSE TRADES REQUIRING ELECTRICAL SERVICE CONNECTIONS. ANY DISCREPANCY, CONFLICT, OR QUESTIONABLE POINT SHALL BE IMMEDIATELY REPORTED TO THE ARCHITECT.
11. EXPOSED DUCTWORK SHALL BE SINGLE-WALL WITH AN ACoustiLINE INSULATING LINER COATED TO PROTECT AGAINST EROSION AND MICROBIAL GROWTH. PROVIDE WITH INTERNAL VAPOR BARRIER. DUCTWORK SHALL BE CONSTRUCTED PER SMACNA PRACTICES.
12. PROVIDE GREASE DUCT CLEAN-OUT ACCESS AS REQUIRED PER 2021 INTERNATIONAL MECHANICAL CODE. ACCESS SHALL BE FIRE WRAPPED SIMILAR TO THE GREASE DUCT. REFER TO DUCT ACCESS DETAIL M0-1-18.
13. AFTER INSTALLING WALL, CEILING OR FLOOR INSULATION, THE INSTALLER SHALL POST IN A CONSPICUOUS LOCATION IN THE BUILDING A CERTIFICATE SIGNED BY INSTALLER STATING THAT THE INSTALLATION CONFORMS TO THE PLANS AND REQUIREMENTS OF LOCAL ENERGY CODES. THEIR CERTIFICATE SHALL ALSO STATE THE MANUFACTURER'S NAME AND MATERIAL IDENTIFICATION AND THE INSTALLED R-VALUE.
14. PROVIDE DUCT TURNING VANES PER SMACNA REQUIREMENTS) AT ALL HARD 90 DEGREE ELBOW TURN IN DUCT SYSTEM.
15. THE DUCT COVERINGS AND LININGS SHALL NOT FLAME, GLOW, SMOLDER OR SMOKE WHEN TESTED IN ACCORDANCE WITH ASTM C-41 AND SECTION 694.3 OF THE MECHANICAL CODE. FLEXIBLE DUCTS AND CONNECTORS SHALL BE TESTED IN ACCORDANCE WITH UL 181 AND BE LABELED WITH FLEXIBLE CONNECTORS BEING LIMITED TO A MAXIMUM LENGTH OF 5 FEET. THE JOINTS AND CONNECTIONS FOR THE DUCT SYSTEMS SHALL CONFORM TO THE APPLICABLE MATERIAL STANDARDS REFERENCED IN THE MECHANICAL CODE. ROOF DUCTS MUST BE SUPPORTED AT INTERVALS NOT EXCEEDING 10 FEET. ALL AIR FILTERS SHALL BE LISTED AND LABELED AND MEET THE APPLICABLE STANDARDS REFERENCED IN THE MECHANICAL CODE (603.5, 603.6, 603.9, 603.10, 604.3, 605.2).

mechanical key word notes

1. EXTEND FULL SIZED MAIN SUPPLY AND RETURN DUCTS UP TO ROOFTOP UNIT. PROVIDE FLEXIBLE DUCT CONNECTION PRIOR TO CONNECTING TO UNIT. PROVIDE EXACT SIZE OF MAIN DUCTS WITH RTU MANUFACTURER'S DATA AND TRANSITION IN CURB AS REQUIRED.
2. RTU MOUNTED SMOKE DETECTOR TO SHUT DOWN ROOFTOP UNIT UPON DETECTION AND SIGNAL BUILDING FIRE ALARM SYSTEM. SMOKE DETECTOR FURNISHED WITH RTU. WIRING TO FIRE ALARM PANEL BY ALARM CONTRACTOR.
3. WALL MOUNTED REMOTE ZONE TEMPERATURE AND HUMIDITY SENSORS WIRED BACK TO RESPECTIVE PROGRAMMABLE THERMOSTAT IN MANAGER'S OFFICE. MOUNT AT 6'0" ABOVE FINISHED FLOOR. PROVIDE WITH INSULATED SUBBASE WHEN MOUNTED ON AN EXTERIOR WALL. PROVIDE WITH LOCKING COVER.
4. RETURN AIR INTAKE OPENING SHALL HAVE A MINIMUM FREE AREA OF 12 SQUARE FEET FOR RTU-1 & RTU-2 AND 8 SQUARE FEET FOR RTU-3 MOUNTED ON THE SIDE OF THE RETURN AIR FLENUM FACING THE SUPPLY FLENUM. PROVIDE 1/4"x1/4" CORROSION RESISTANT WIRE MESH SCREEN OVER INTAKE.
5. BOTTOM OF SUPPLY AND RETURN FLENUMS SHALL BE AT 14'-7" AFF FROM ELEVATION 100'-0".
6. PROVIDE SYMMETRICAL TEE WITH TURNING VANES AND SPLITTER DAMPER. LARGER SIZE PREVAL. PROVIDE DUCT TRANSITION TO SMALLER SIZE DUCTS AS REQUIRED. BALANCE EACH BRANCH TO TOTAL, CONNECTED ARROWS AS INDICATED ON PLAN.
7. PROVIDE 2"x4" INTAKE BEVEL ON RETURN AIR DUCT ENTRANCE. SEE DETAIL M0-1-10.
8. PROVIDE 90° ELBOWS WITH TURNING VANES.
9. DROP DUCT TO LOWEST KEG GAGE SPACE. REFER TO ARCHITECTURAL PLANS FOR DIFFUSER HEIGHT.
10. GAS HEATERS. REFER TO PLUMBING DWGS FOR REQUIRED GAS CONNECTION AND DETAILS.
11. LINED SUPPLY UNIT DROP TRANSITION TO 24"x24". PROVIDE FLEXIBLE DUCT CONNECTION PRIOR TO CONNECTING TO UNIT.
12. LINED RETURN UNIT DROP TRANSITION TO 32"x24". PROVIDE FLEXIBLE DUCT CONNECTION PRIOR TO CONNECTING TO UNIT.
13. ALIGN 18" SUPPLY DUCT TO KEG GAGE OPENING. ALIGNMENT TO OCCUR AT THE DUCT TRANSITION BETWEEN THE 24" AND 18" SUPPLY DUCTS.
14. PAINT DIFFUSER IN BLACK.

architect + engineer



19100 VON KARMBAAVE
SUITE 600
IRVINE, CA 92612
949.753.7817
WDFPARTNERS.COM

project no. | USBJ0373

OWNER



project info

7151 W. RAY ROAD
CHANDLER, ARIZONA 85226

prototype:
PROTO - 2020 - PL

issue dates

PLANNING SUBMITTAL	08/17/2022
HEALTH SUBMITTAL	09/17/2022
BUILDING PERMIT CONSTRUCTION	07/01/2022

revisions: 088
07/29/2022

designed by: Y. ZHANG
checked by: F. AL-JANABI

seal

sheet info

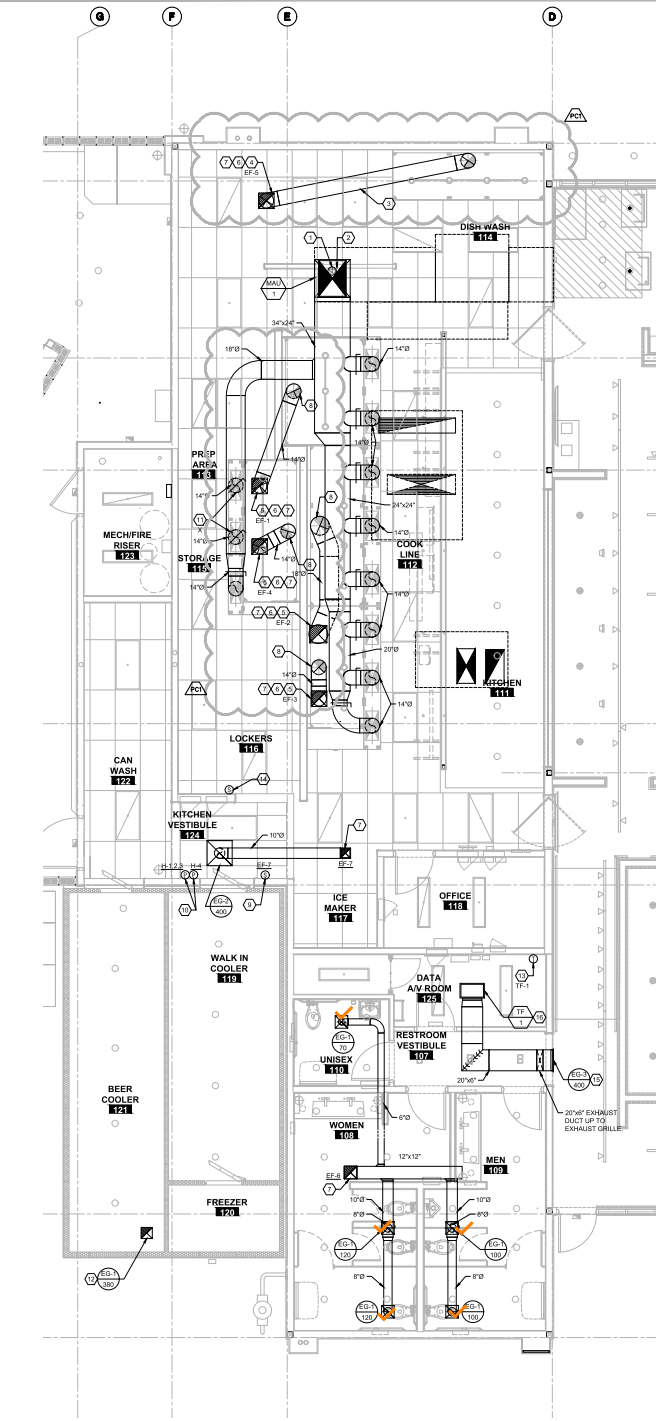
MECHANICAL HVAC - CEILING PLAN

M1.0

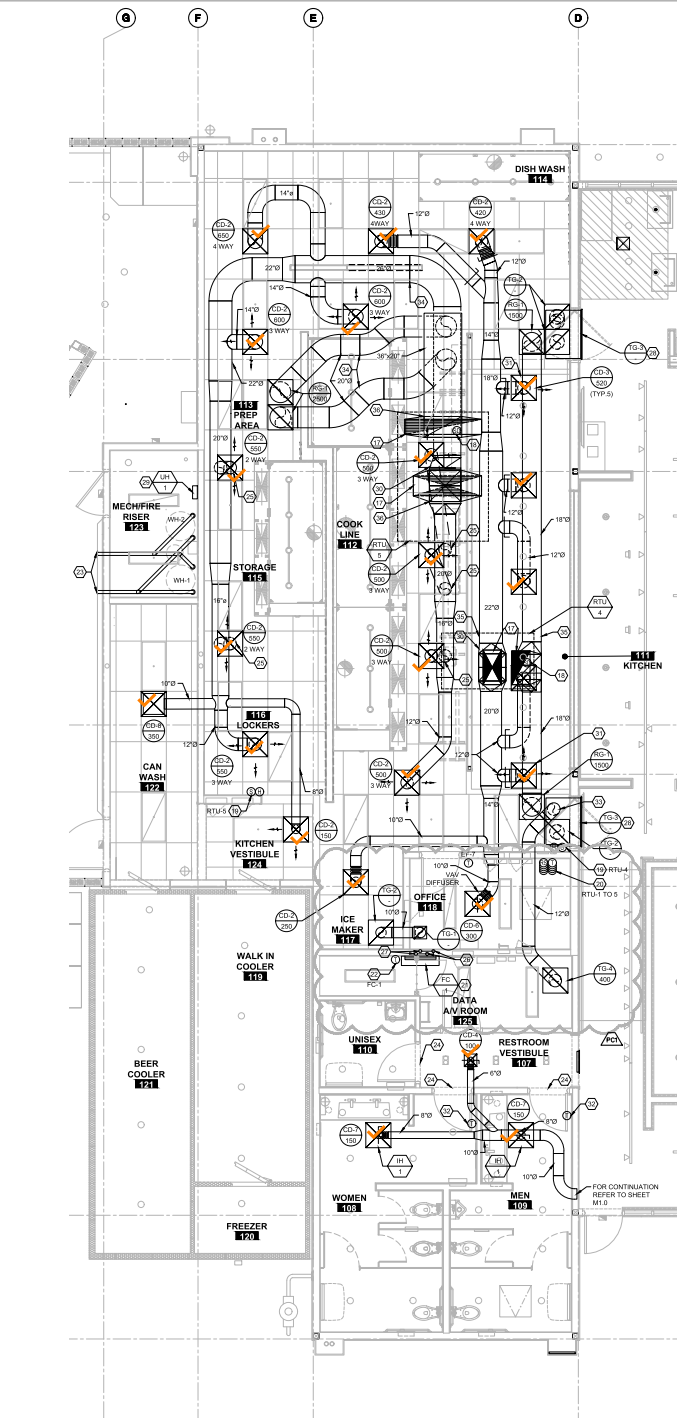
PROGRESS SET 08-08-2022 NOT FOR BIDS OR CONSTRUCTION

ANY CHANGES MADE TO THE DESIGN IDENTIFIED ON THESE DRAWINGS AND/OR ASSOCIATED SPECIFICATIONS SHALL BE SUBMITTED TO THE ENGINEER ARCHITECT OF RECORD FOR REVIEW AND APPROVAL PRIOR TO MAKING ANY MODIFICATIONS TO THE PROJECT. ANY LIABILITY AS A RESULT OF DESIGN MODIFICATIONS, AS WELL AS ANY COST ASSOCIATED WITH SUCH MODIFICATIONS, MADE WITHOUT THE WRITTEN APPROVAL OF THE ENGINEER ARCHITECT OF RECORD SHALL BECOME THE RESPONSIBILITY OF THE CONTRACTOR.





01 mechanical partial floor plan - kitchen exhaust & makeup
SCALE 1/4" = 1'-0"



02 mechanical partial floor plan - kitchen supply & return
SCALE 1/4" = 1'-0"

- general notes**
1. ALL CURB TO BE LEVELLED AND INSTALLED BY GENERAL CONTRACTOR.
 2. ALL ROOF OPENINGS BY GENERAL CONTRACTOR.
 3. GENERAL CONTRACTOR SHALL PROVIDE FRAMING AT ALL ROOF OPENINGS. FILED COORDINATE EXACT ROOF OPENINGS WITH G.C.
 4. ENDS OF DUCTWORK SHALL BE SEALED FOR STORAGE AND DURING CONSTRUCTION. ALL MECHANICAL EQUIPMENT ARE TO BE COVERED PER 2014 ASHRAE 151 STANDARDS.
 5. ALL CONCEALED HVAC SUPPLY & RETURN DUCTWORK TO BE EXTERNALLY WRAPPED. REFER TO MECHANICAL GENERAL NOTES ON SHEET M0 FOR REQUIRED INSULATION.
 6. DO NOT INSTALL REMOTE TEMPERATURE SENSORS CLOSE TO COOLER. HEAT PRODUCING APPLIANCES OR EQUIPMENT. COORDINATE FINAL LOCATIONS WITH HVAC EQUIPMENT CONTRACTOR.
 7. HVAC CONTRACTOR SHALL BE PRESENT ON SITE ON THE DATE OF THE STORE TURNOVER. CONTRACTOR SHALL REPLACE ALL AC FILTERS AFTER FINAL CLEANING AND BEFORE FINAL AIR BALANCE.
 8. ALL DUCT DIMENSIONS SHOWN ON DRAWINGS ARE CLEAR INSIDE DIMENSIONS.
 9. COORDINATION OF EXISTING LOCATIONS TO BE PERFORMED ON THE FIELD. THE DRAWINGS ARE NOT INTENDED TO BE SCALED. REFER TO THE ARCHITECTURAL DRAWINGS FOR DIMENSIONS AND LIMITATIONS OF THE BUILDING TO BE CONSTRUCTED AND TO THE MECHANICAL DRAWINGS FOR THE LOCATION OF EQUIPMENT OF THOSE TRADES REQUIRING ELECTRICAL SERVICE CONNECTIONS. ANY DISCREPANCY, CONFLICT, OR QUESTIONABLE POINT SHALL BE IMMEDIATELY REPORTED TO THE ARCHITECT.
 10. EXPOSED DUCTWORK SHALL BE SINGLE-WALL WITH AN ACoustiLINE INSULATING LINER COATED TO PROTECT AGAINST EROSION AND MICROBIAL GROWTH. PROVIDE WITH INTERNAL VAPOR BARRIER. DUCTWORK SHALL BE CONSTRUCTED IN ACCORDANCE WITH THE FOLLOWING STANDARDS:
 11. PROVIDE GREASE DUCT CLEAN-OUT ACCESS AS REQUIRED PER 2021 INTERNATIONAL MECHANICAL CODE. ACCESS SHALL BE FIRE WRAPPED SIMILAR TO THE GREASE DUCT.
 12. AFTER INSTALLING WALL CEILING, OR FLOOR INSULATION, THE INSTALLER SHALL POST IN A CONSPICUOUS LOCATION IN THE BUILDING A CERTIFICATE SIGNED BY INSTALLER STATING THAT THE INSTALLATION CONFORMS TO THE PLANS AND REQUIREMENTS OF LOCAL ENERGY CODES. THEIR CERTIFICATE SHALL ALSO STATE THE MANUFACTURER'S NAME AND MATERIAL IDENTIFICATION AND THE INSTALLED R-VALUE.
 13. PROVIDE DUCT TURNING VANES (PER SMACNA REQUIREMENTS) AT ALL HARD 90 DEGREE ELBOW TURNS IN DUCT SYSTEM.
 14. THE DUCT COVERINGS AND LININGS SHALL NOT FLAME, GLOW, SMOLDER OR SMOKE WHEN TESTED IN ACCORDANCE WITH ASTM E 814 AND SECTION 9.4.2 OF THE MECHANICAL CODE. FLEXIBLE DUCTS AND CONNECTORS SHALL BE TESTED IN ACCORDANCE WITH UL 181 AND BE LABELED WITH FLEXIBLE CONNECTORS BEING LIMITED TO A MAXIMUM LENGTH OF 8 FEET. THE JOINTS AND CONNECTIONS FOR THE DUCT SYSTEM SHALL CONFORM TO THE APPLICABLE MATERIAL STANDARDS REFERENCED IN THE MECHANICAL CODE. ROOF DUCTS SHALL BE SUPPORTED AT INTERVALS NOT EXCEEDING 10 FEET. ALL AIR FILTERS SHALL BE LISTED AND LABELED AND MEET THE APPLICABLE STANDARDS REFERENCED IN THE MECHANICAL CODE. 2014 ASHRAE 151 SHALL BE USED.
- mech. keyed notes - exhaust & makeup**
1. RTU MOUNTED SMOKE DETECTOR TO SHUT DOWN MAKEUP AIR UNIT UPON DETECTION OF SMOKE AND SIGNAL BUILDING FIRE ALARM SYSTEM. SMOKE DETECTOR FURNISHED WITH WALL WIRING TO FIRE ALARM PANEL BY ALARM CONTRACTOR.
 2. FULL SIZE SUPPLY DUCT DOWN THROUGH ROOF WITH FLEXIBLE CONNECTION UNIT. PROVIDE 90° ELBOW WITH TURNING VANES AND TRANSITION TO 36" DIA MAKEUP AIR DUCT. MOUNT DUCTWORK TO EXTERIOR WALL OR ROOF.
 3. ROUTE 14" DISHWASHER EXHAUST DUCT UP AND PROVIDE TRANSITION TO EXHAUST FAN ON ROOF.
 4. ROUTE COORDINATE EXHAUST DUCT AS SHOWN TO MAINTAIN CLEARANCE FROM ROOF PARAPET AND EXTEND UP TO ROOF MOUNTED EXHAUST FAN FIELD WITH ANY REQUIRED TRANSITIONS OR OFFSETS OF EXHAUST DUCT TO CLEAR ANY STRUCTURAL MEMBRANE. PITCH HORIZONTAL DUCT SECTION TO ROOF.
 5. PRE-MANUFACTURED ROUND HOOD EXHAUST DUCT PROVIDED BY CAPTIVE AIRE. REFER TO SHEETS M4 SERIES FOR SPECS AND DETAILS.
 6. REFER TO MECHANICAL SHEETS M4 SERIES FOR KITCHEN HOOD SYSTEM EQUIPMENT SCHEDULE AND HOOD DETAILS. ALL HOOD DUCTWORK AND REQUIRED DUCT TRANSITIONS FURNISHED AND INSTALLED BY CAPTIVE AIRE.
 7. EXTEND EXHAUST DUCT UP TO FAN ON ROOF.
 8. COORDINATE WITH ELECTRICAL CONTRACTOR FOR CONNECTION OF FACTORY MOUNTED HOOD DUCT HEAT SENSOR TO HOOD CONTROL BOARD. REFER TO SHEET M4 WIRING DIAGRAM.
 9. LINE VOLTAGE 1 STAT AND REMOTE TEMPERATURE SENSOR HONEYWELL MD0775 SERIES WITH TEMP. CONTROLLER (T7720240). TEMP SENSOR SHALL BE WALL MOUNTED AT 12" A.F.F. LOCATE THERMISTAT IN MANAGERS OFFICE. REFER TO SHEET M4 WIRING DIAGRAM.
 10. MANUAL PULL STATION FOR KITCHEN HOOD FIRE SUPPRESSION SYSTEM ACTIVATION AND GAS SUPPLY SHUT-OFF PROVIDED AND INSTALLED BY HOOD SUPPRESSION SYSTEM SUBCONTRACTOR HIRIED BY CAPTIVE AIRE. LOCATE PULL STATION OUTSIDE OF KITCHEN. COORDINATE FULL STATION REQUIREMENTS WITH HOOD SUPPRESSION SYSTEM SUBCONTRACTOR AND AUTHORITY HAVING JURISDICTION.
 11. DROP 14" ROUND DUCT FROM BOTTOM OF DUCT. PROVIDE MANUAL DAMPER FOR AIR BALANCE SAME SIZE AS THE DROP AT TAKE-OFF.
 12. FIELD CUT A 12"x12" HOLE IN THE COOLER ROOF. GENERAL CONTRACTOR TO PROVIDE CURB AND FLASHING AS REQUIRED. PROVIDE 10" VOLT EXHAUST DUCT AND CONNECT TO RTU 4.
 13. TRANSFER FAN TF-1 SHALL BE CONTROLLED BY 120 VOLT THERMOSTAT. REFER TO SHEET M2.0 FOR TEMPERATURE SET POINT.
 14. KITCHEN HOODS TEMPERATURE SENSOR INSTALLED AWAY FROM HEAT SOURCE PER IMC SECTION 902.2.1.1. COORDINATE WITH ELECTRICAL CONTRACTOR FOR CONNECTION TO HOODS CONTROL BOARD. SEE SHEET M4 S WIRING DIAGRAMS. FIELD COORDINATE EXACT LOCATION. PROVIDE WITH LOCKING COVER.
 15. EXHAUST TRANSFER GRILLE MOUNTED AT +1'-12" A.F.F. TO BOTTOM OF GRILLE. EXHAUST GRILLE ORIENTED TO EXHAUST HOT AIR UPWARDS.
 16. CEILING MOUNT TRANSFER FAN TF-1.
- mech. keyed notes - supply & return**
17. EXTEND MAIN SUPPLY AND RETURN DUCTS UP TO ROOFTOP UNIT. PROVIDE DUCT TRANSITION AND FLEXIBLE DUCT CONNECTION TO UNIT DUCT WORKING. COORDINATE EXACT SIZE OF DUCT TRANSITION WITH RTU MANUFACTURER'S DATA AND TRANSITION IN CURBS AS REQUIRED.
 18. RTU MOUNTED SMOKE DETECTOR TO SHUT DOWN ROOFTOP UNIT UPON DETECTION OF SMOKE AND SIGNAL BUILDING FIRE ALARM SYSTEM. SMOKE DETECTOR FURNISHED WITH WALL WIRING TO FIRE ALARM PANEL BY ALARM CONTRACTOR.
 19. WALL MOUNTED REMOTE ZONE TEMPERATURE AND HUMIDITY SENSORS WIRING BACK TO RESPECTIVE PROGRAMMABLE THERMOSTAT IN MANAGERS OFFICE. MOUNT AT 10' ABOVE FINISHED FLOOR. PROVIDE WITH INSULATED SUBBASE WHEN MOUNTED ON AN EXTERIOR WALL. PROVIDE WITH LOCKING COVER.
 20. PROGRAMMABLE THERMOSTATS AND DUCT SMOKE DETECTOR RESET STATIONS IN MANAGERS OFFICE TO BE VERTICALLY STACKED AND CLEARLY LABELED. VERIFY PLACEMENT WITH ARCHITECTURAL FLOOR PLAN AND INTERIOR ELEVATIONS. SEE THERMOSTAT MOUNTING DETAIL M3-1-2.
 21. MOUNT FC-1 AT 8' A.F.F. TO BOTTOM OF FAN COIL. PROVIDE A SECONDARY DRAIN PAN UNDER THE ENTIRE FAN COIL. REFER TO PLUMBING PLAN FOR CONDENSATE DRAIN PIPE ROUTING AND DISCHARGE LOCATION.
 22. TEMPERATURE CONTROLLER FOR FC-1 DUCTLESS FAN COIL UNIT. MOUNT ON WALL AT 4' A.F.F. REFER TO SHEET M2.0 FOR TEMPERATURE SET POINT.
 23. EXTEND 3" CPVC WATER HEATER VENT AND INTAKE FROM WATER HEATER AND TERMINATE THRU WALL. PROVIDE OFFSET AS REQUIRED. REFER TO SHEET M4.1-1.0. LINE UP BOTH WATER HEATER INTAKE TERMINALS ON ONE SIDE AND BOTH EXHAUST ON THE OTHER SIDE AS SHOWN WITH 4 FEET CLEARANCE BETWEEN THEM.
 24. 1" CLEAR UNDERDOOR RESTROOM DOOR.
 25. DROP 12" ROUND DUCT FROM BOTTOM OF DUCT. PROVIDE MANUAL DAMPER FOR AIR BALANCE SAME SIZE AS THE DROP AT TAKE-OFF.
 26. ROUTE (RL) & (RS) REFRIGERANT PIPING UP INSIDE WALL AND RUN UNDER ROOF.
 27. ROUTE (RL) & (RS) REFRIGERANT PIPING UP THROUGH ROOF TO CONDENSING UNIT.
 28. KITCHEN MAKEUP AIR TRANSFER. PROVIDE 20"x20"x30" SHEET METAL PLENUM FOR TRANSFER GRILLE HIGH ABOVE CEILING. CONDENSED 14" DUCTS FROM BOTTOM OF WATER HEATER TO CEILING GRILLES. MOUNT SIDEWALL TRANSFER GRILLE AT 15'0" A.F.F. TO BOTTOM OF GRILLE.
 29. PROVIDE SYMMETRICAL TEE WITH TURNING VANES AND SPLITTER DAMPER. LARGER SIZE PREVAL. PROVIDE DUCT TRANSITION TO SMALLER SIZE DUCTS AS REQUIRED. BALANCE EACH BRANCH TO TOTAL CONNECTED AREA AS INDICATED ON PLAN.
 30. PROVIDE WITH SECTORING BAFFLE.
 31. CD 7 (H) SENSOR BEHIND DOOR.
 32. 12" TRANSFER DUCT DOWN TO THE TOP OF THE PLENUM BOX.
 33. SUPPLY AND RETURN DUCTS TO BE INSTALLED BELOW MAKEUP SUPPLY DUCTS.
 34. DUCT TRANSITION FROM UNIT DUCT OPENINGS TO 36" DIA MAIN RETURN DUCT DROP AND 26"x20" MAIN SUPPLY DUCT DROP TO CLEAR SPACE FOR EACH OTHER DUCT RUNS.
 35. DUCT TRANSITION FROM MAIN RETURN DUCT DROP TO 26"x20" PROVIDE A 90 DEGREE ELBOW FOR HORIZONTAL DUCT RUN, AND DUCT TRANSITION FROM MAIN SUPPLY DUCT DROP TO 30"x30" DUCT DOWN TO CLEAR WALL BETWEEN KITCHEN AND COOK LINE.

ANY CHANGES MADE TO THE DESIGN IDENTIFIED ON THESE DRAWINGS AND/OR ASSOCIATED SPECIFICATIONS SHALL BE SUBMITTED TO THE ENGINEER ARCHITECT FOR REVIEW AND APPROVAL PRIOR TO MAKING ANY MODIFICATIONS TO THE PROJECT. ANY LIABILITY AS A RESULT OF DESIGN MODIFICATIONS, AS WELL AS ANY COST ASSOCIATED WITH SUCH MODIFICATIONS, MADE WITHOUT THE WRITTEN APPROVAL OF THE ENGINEER ARCHITECT OF RECORD SHALL BECOME THE RESPONSIBILITY OF THE CONTRACTOR.

architect + engineer

wd

19100 VON KARMBAAVE
SUITE 600
IRVINE, CA 92612
949.753.7817
WDFPARTNERS.COM

project no. | USBJ30373

OWNER

project info

7151 W. RAY ROAD
CHANDLER, ARIZONA 85226

PROTO: 2020 - PL

ISSUE DATES

submittal:	05/12/2022
PLANNING SUBMITTAL:	05/12/2022
HEALTH SUBMITTAL:	05/17/2022
BUILDING PERMIT CONSTRUCTION:	05/17/2022

revisions:

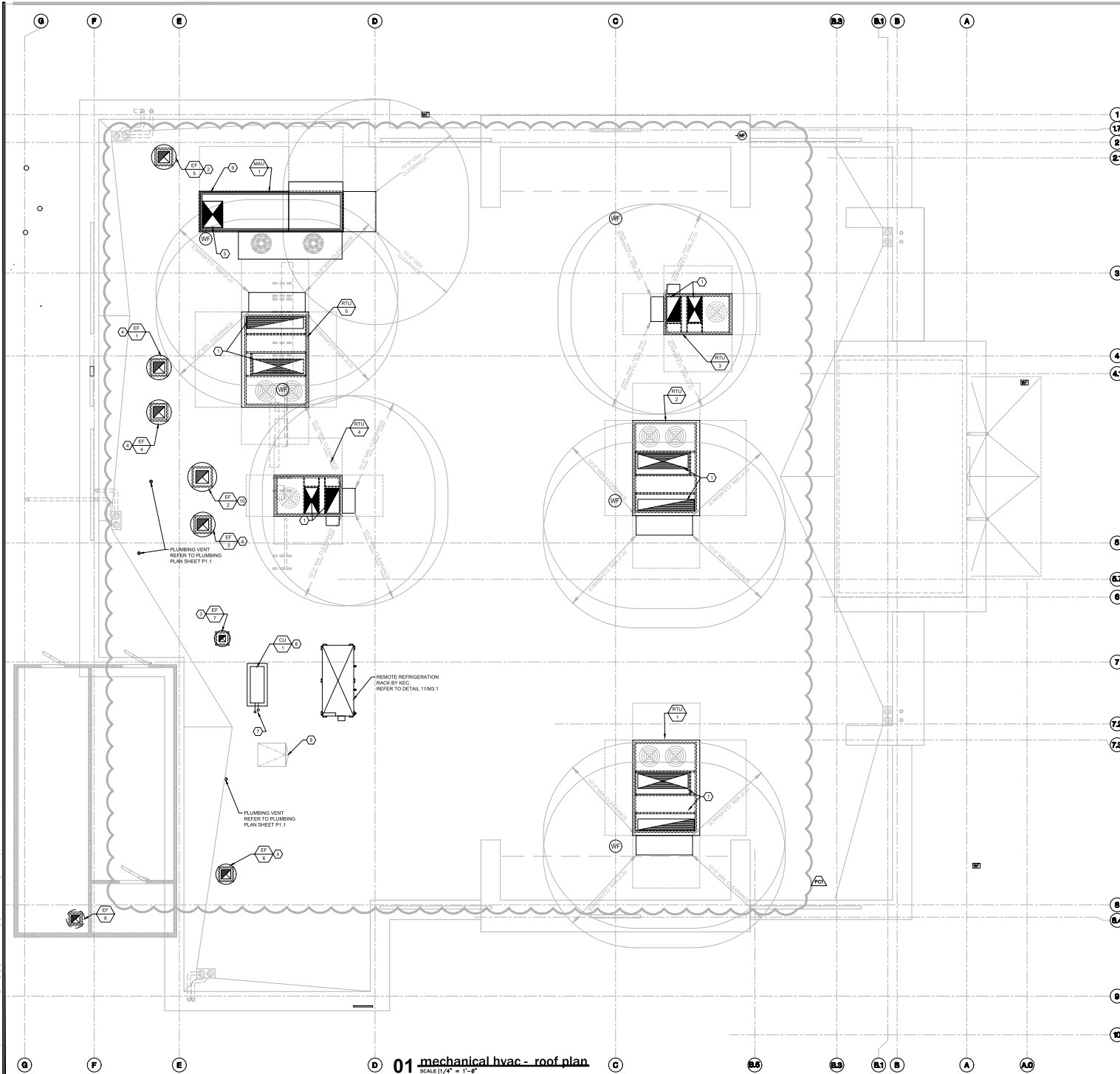
001:	07/26/2022
------	------------

designed by: Y. ZHANG
checked by: F. AL-JANABI

MECHANICAL HVAC - PARTIAL KITCHEN PLANS

M1.1

PROGRESS SET 08-08-2022 NOT FOR BIDS OR CONSTRUCTION



01 mechanical hvac - roof plan
SCALE 1/4" = 1'-0"

- general notes**
- FRESH AIR INTAKES SHALL BE 10'-0" MIN. AWAY FROM ALL EXHAUST OUTLETS, PLUMBING VENTS, AND FLEES.
 - ALL REFRIGERANT PIPING ON ROOF SHALL BE ROUTED ON MF-FAB RUBBER SUPPORT SERIES C3 & C4.
 - CONTRACTOR SHALL COORDINATE EXACT EQUIPMENT PAD SIZES AND LOCATIONS WITH OTHER TRADES PRIOR TO INSTALLATION.
 - MAINTAIN MANUFACTURER'S MIN. CLEARANCES ON ALL ROOF-TOP MECHANICAL EQUIPMENT.
 - CONTRACTOR SHALL CONFIRM FINAL REFRIGERANT PIPE SIZES UPON DETERMINATION OF ACTUAL DEVELOPED LENGTH. ALL PIPE MATERIALS SHALL BE PER MFG. GUIDELINES.
 - CONTRACTOR SHALL INSULATE ALL REFRIGERANT PIPING SUCTION LINES, AND PROVIDE WEATHER JACKETING FOR ALL REFRIGERANT PIPING.
 - CONTRACTOR SHALL PROVIDE SHOP DRAWINGS WITHIN 45 DAYS OF AWARD OF CONTRACT. SEE SPECIFICATIONS FOR REQUIREMENTS. IF SHOP DRAWINGS ARE NOT PROVIDED TO THE ENGINEER FOR APPROVAL, AND ANY CONFLICTS OCCUR BETWEEN TRADES DURING CONSTRUCTION, A ETC. THEN, THE CONTRACTOR SHALL BE RESPONSIBLE AND BEAR ALL COST INCURRED FOR ANY REVISIONS, AT NO ADDITIONAL COST TO THE DISTRICT. THE DISTRICT AND ENGINEER SHALL BE NOTIFIED IMMEDIATELY PRIOR TO FABRICATION AND INSTALLATION OF ANY CONFLICTS BETWEEN TRADES DURING CONSTRUCTION, & ETC.
 - ALL REFRIGERANT PIPING SHALL BE TYPE "ACR" COPPER.
 - GENERAL CONTRACTOR SHALL INSTALL LEVELED ROOF CURBS FOR ALL EQUIPMENT. MINIMUM CURB HEIGHT SHALL BE 14". REFER TO EQUIPMENT SCHEDULES FOR EACH EQUIPMENT CURB HEIGHT REQUIREMENT.
 - ALL MECHANICAL EQUIPMENT MUST BEAR THE LABEL OF AN APPROVED AGENCY IN ADDITION TO THE PROVISIONS ESTABLISHED IN THE CODES FOR SPECIFIC MECHANICAL EQUIPMENT. ALL EQUIPMENT MUST BE INSTALLED IN ACCORDANCE WITH THE INFORMATION ON THE LABEL AND THE MANUFACTURER'S INSTALLATION INSTRUCTIONS, WHICH MUST BE AVAILABLE AT THE JOB SITE.

- mechanical keyed notes**
- EXTEND FULL-SIZED SUPPLY AND RETURN MAIN DUCTS DOWN THRU ROOF.
 - 15"x15" EXHAUST DUCT DOWN THROUGH ROOF.
 - 10"x10" EXHAUST DUCT DOWN THROUGH ROOF.
 - 12"x12" EXHAUST DUCT DOWN THROUGH ROOF.
 - EXTEND FULL SIZE SUPPLY DUCT DOWN THROUGH ROOF.
 - EQUIPMENT PAD BY G.C., MINIMUM 6" HIGH ABOVE FINISH ROOF. REFER TO DETAIL M3.1-14.
 - FCU-1 REFRIGERANT LINES. REFER TO SHEET M1.0 FOR CONTINUATION. REFER TO DETAIL M3.1-11.
 - ACCESS TO ROOF MOUNTED EQUIPMENT.
 - EXTEND HEATING SECTION FLUE VERTICALLY UPWARD TO BE MIN. 3'-0" ABOVE ANY AIR INTAKE WITHIN 10'-0" RADIUS.
 - 18"x18" EXHAUST DUCT DOWN THROUGH ROOF.

ANY CHANGES MADE TO THE DESIGN IDENTIFIED ON THESE DRAWINGS AND/OR ASSOCIATED SPECIFICATIONS SHALL BE SUBMITTED TO THE ENGINEER/ARCHITECT OF RECORD FOR REVIEW AND APPROVAL PRIOR TO MAKING ANY MODIFICATIONS TO THE PROJECT. ANY LIABILITY AS A RESULT OF DESIGN MODIFICATIONS, AS WELL AS ANY COST ASSOCIATED WITH SUCH MODIFICATIONS, MADE WITHOUT THE WRITTEN APPROVAL OF THE ENGINEER/ARCHITECT OF RECORD SHALL BECOME THE RESPONSIBILITY OF THE CONTRACTOR.



19100 VON KARMAN AVE.
SUITE 600
IRVINE, CA 92612
949.753.7817
WDFPARTNERS.COM

project no. | BJSB.00373

OWNER



project info

7151 W. RAY ROAD
CHANDLER, ARIZONA 85226

prototype:
PROTO - 2020 - PL

issue dates

submission:	date
PLANNING SUBMITTAL	08/17/2022
HEALTH SUBMITTAL	08/17/2022
BUILDING PERMIT CONSTRUCTION	07/01/2022

revisions:	date
1	07/26/2022

designed by: Y. ZHANG
checked by: F. AL-JANABY

seal

sheet info

MECHANICAL HVAC - ROOF PLAN

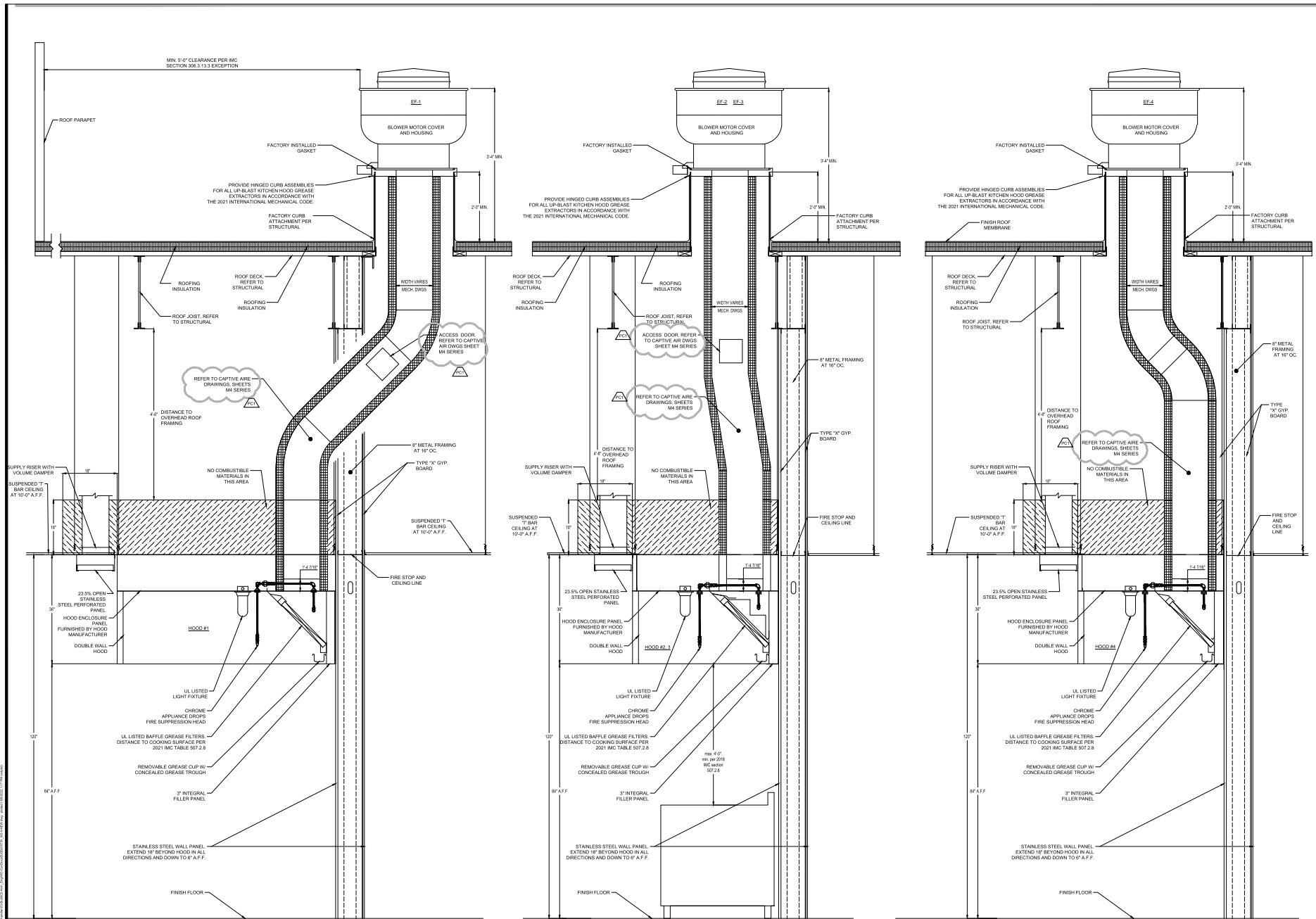
M1.2

PROGRESS SET 08-08-2022 NOT FOR BIDS OR CONSTRUCTION

ARCHITECTURE: ARCHITECT + ENGINEER
 MECHANICAL: WDF PARTNERS
 ELECTRICAL: WDF PARTNERS
 PLUMBING: WDF PARTNERS
 STRUCTURE: WDF PARTNERS
 CIVIL: WDF PARTNERS



PROGRESS SET 08-08-2022 NOT FOR BIDS OR CONSTRUCTION



01 hood section (item 100 - pizza)
SCALE 1/4"

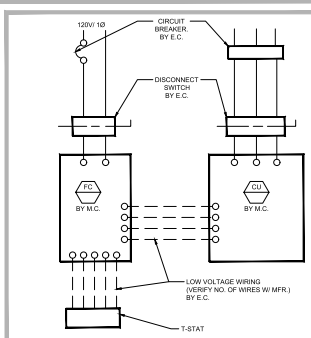
02 hood section (item 118 - main cookline)
SCALE 1/4"

03 hood section (item 90 - prep cooking)
SCALE 1/4"

TABLE 507.2.8 MINIMUM DISTANCE BETWEEN THE LOWEST EDGE OF A GREASE FILTER AND THE COOKING SURFACE OR THE HEATING SURFACE

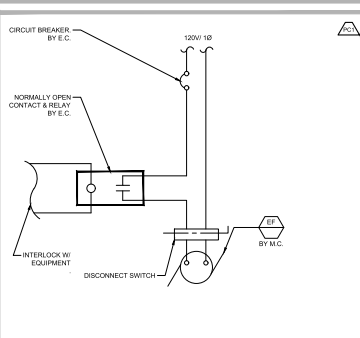
TYPE OF COOKING APPLIANCES	HEIGHT ABOVE COOKING SURFACE (INCHES)
Without exposed flame	0.5
Exposed flame and burners	2
Exposed charcoal and charcoal type	3.5

08/17/2022 09:45 AM C:\PROJECTS\22-0000\DWG\MECH\MECH_HOOD_DUCT_SECTION\M3.0.dwg



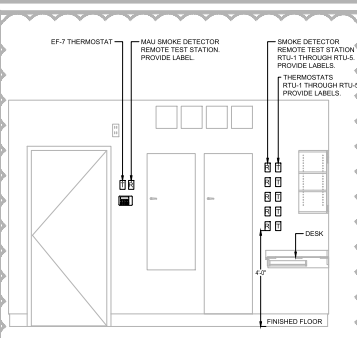
20 split system control

SCALE | none



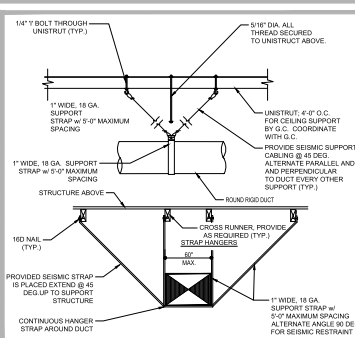
16 exhaust fan control

SCALE | none



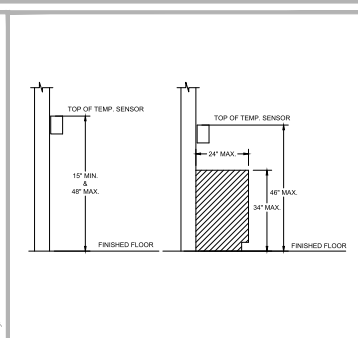
12 thermostat mounting detail in office

SCALE | none



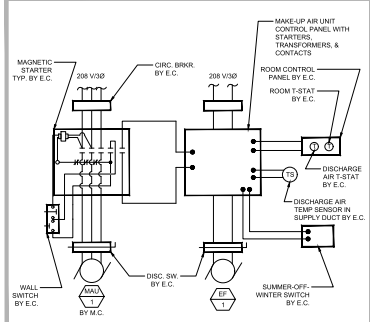
08 duct support detail

SCALE | none



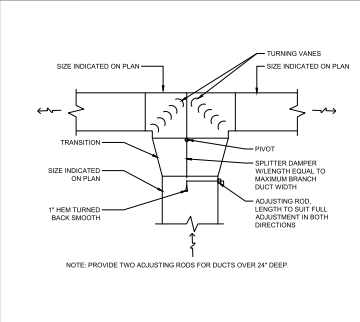
04 control device mounting detail

SCALE | none



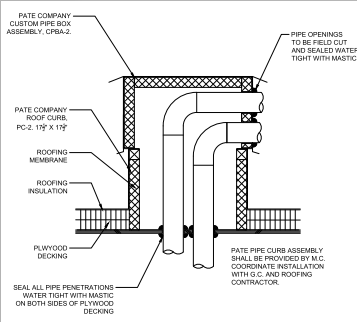
19 kitchen exhaust/make-up air control

SCALE | large



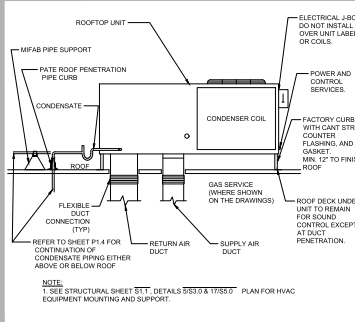
15 splitter damper detail

SCALE | none



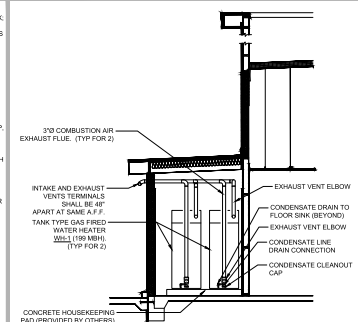
11 refrigerant piping through roof detail

SCALE | none



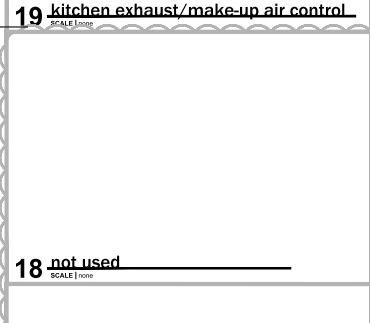
07 roof top unit detail

SCALE | none



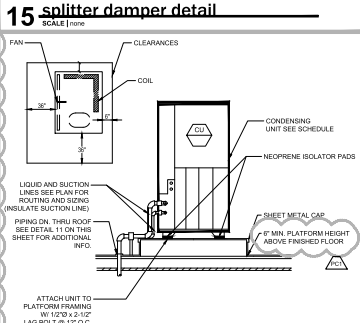
03 water heaters detail

SCALE | none



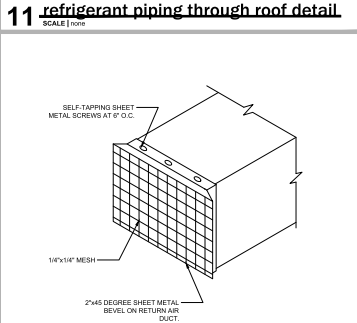
18 not used

SCALE | none



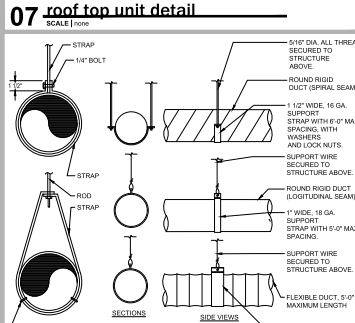
14 condensing unit mounting detail

SCALE | none



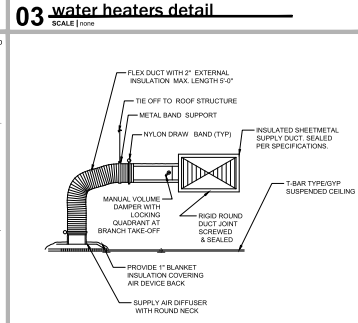
10 removable metal frame detail

SCALE | none



06 round duct hanger and support detail

SCALE | none



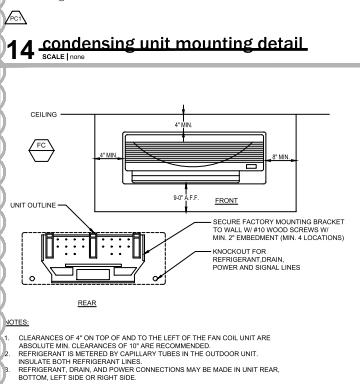
02 ceiling mounted supply air diffuser

SCALE | none



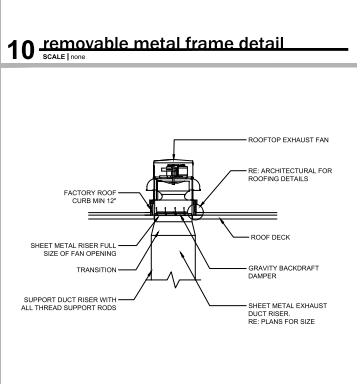
17 not used

SCALE | none



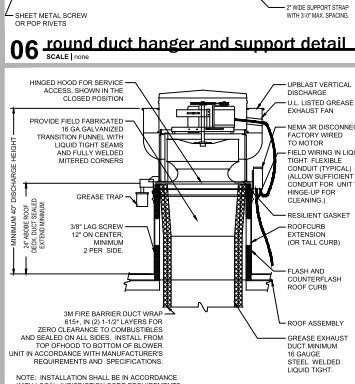
13 wall mounted fan coil unit detail

SCALE | none



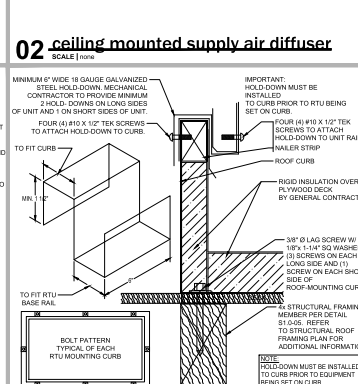
09 restroom fan detail

SCALE | none



05 roof mounted grease exhaust fan detail

SCALE | none



01 rtu roof mounting detail

SCALE | none

THE CONSTRUCTION DOCUMENT CONTAINED ON THIS SHEET WAS NOT PREPARED BY WD PARTNERS, INC. AND IS INCLUDED WITHIN THIS SET FOR REFERENCE ONLY FOR THE PURPOSES PERTAINING TO THIS PROJECT. WD PARTNERS DID NOT REVIEW THE CONSTRUCTION DOCUMENTATION ON THIS SHEET FOR ERRORS, OMISSIONS, ACCURACY, OR COMPLETENESS AND BY INCLUDING THIS SHEET WITHIN THE CONSTRUCTION SET, WD PARTNERS DOES NOT REPRESENT THAT SUCH INFORMATION ON THIS SHEET IS ACCURATE, COMPLETE, AND THAT THE INFORMATION HAS NOT BEEN OBTAINED OR THAT IT COMPLIES WITH ALL CURRENT APPLICABLE LOCAL CODES, RESTRICTIONS, AND REQUIREMENTS.

HOOD INFORMATION - JOB#5572930

HOOD NO	TAG	MODEL	MANUFACTURER	LENGTH	MAX COOKING TEMP	TYPE	APPLIANCE DUTY	DESIGN CFM/FT	TOTAL EXH CFM	EXHAUST PLENUM RISER(S)				TOTAL SUPPLY CFM	HOOD CONSTRUCTION	HOOD CONFIG		
										WIDTH	LENG	HEIGHT	DIA			CFM	VEL	SP
1	Item#100 - Pizza	7824 ND-2-PSP-F	CAPTIVEAIRE	8' 6"	450 DEG	I	MEDIUM	223	1894	4"	14"	1894	1772	-0.380"	1553	430 SS WHERE EXPOSED	ALONE	ALONE
2	Item#118-Main Right	5424 ND-2-PSP-F	CAPTIVEAIRE	12' 9"	600 DEG	I	HEAVY	265	3375	4"	18"	3375	1910	-1.205"	2350	430 SS WHERE EXPOSED	RIGHT	ALONE
3	Item#118 - Main left	5424 ND-2-PSP-F	CAPTIVEAIRE	9' 9"	450 DEG	I	MEDIUM	200	1950	4"	14"	1950	1824	-0.391"	1950	430 SS WHERE EXPOSED	LEFT	ALONE
4	Item #90	5424 ND-2-PSP-F	CAPTIVEAIRE	11' 3"	450 DEG	I	MEDIUM	160	1850	4"	14"	1850	1884	-0.313"	1750	430 SS WHERE EXPOSED	ALONE	BACK
5	Item #58	4824 ND-2	CAPTIVEAIRE	12' 0"	450 DEG	II	N/A	158	1900	4"	14"	1900	1777	-0.370"	0	304 SS 100%	ALONE	ALONE

PERFORATED SUPPLY PLENUM(S)

HOOD NO	TAG	POS	LENGTH	WIDTH	HEIGHT	RISER(S)				
						WIDTH	LENG	DIA	CFM	SP
1	Item#100 - Pizza	Front	104"	16"	6"	MUA	12"	28"	776	0.225"
2	Item#118-Main Right	Front	153"	16"	6"	MUA	12"	28"	783	0.225"
3	Item#118 - Main left	Front	137"	16"	6"	MUA	12"	28"	783	0.225"
4	Item #90	Front	148"	14"	6"	MUA	12"	28"	650	0.161"
						MUA	12"	28"	650	0.161"
						MUA	10"	28"	583	0.158"
						MUA	10"	28"	583	0.158"

HOOD INFORMATION

HOOD NO	TAG	TYPE	FILTER(S)		EFFICIENCY @ 7 MICRONS		LIGHT(S)		UTILITY CABINET(S)		FIRE SYSTEM PIPING	HOOD HANGING WEIGHT					
			QTY	HEIGHT	LENGTH	QTY	TYPE	LOCATION	SIZE	ELECTRICAL MODEL #			QUANTITY				
1	Item#100 - Pizza	SS BAFFLE WITH HANDLES	6	20"	16"	30%	3	L55 SERIES E28	NO		YES	515 LBS					
2	Item#118-Main Right	CAPTRATE SOLO FILTER	9	20"	16"	85% SEE FILTER SPEC	4	L55 SERIES E28	NO		YES	674 LBS					
3	Item#118 - Main left	SS BAFFLE WITH HANDLES	7	20"	16"	30%	3	L55 SERIES E28	NO	LEFT	20"X54"X24"	ANSUL R-102	3.0/3.0/3.0	SC-341110MA	1 LIGHT 1 FAN	YES	722 LBS
4	Item #90	SS BAFFLE WITH HANDLES	8	20"	16"	30%	4	L55 SERIES E28	NO	RIGHT	12"X54"X24"	ANSUL R-102	3.0			YES	725 LBS
5	Item #58	CONDENSATE BAFFLE	9	16"	16"	N/A	4	L55 SERIES E28	NO			NO	470 LBS				

HOOD OPTIONS

HOOD NO	TAG	OPTION
1	Item#100 - Pizza	FIELD WRAPPER 12.00" HIGH FRONT, RIGHT. LEFT END STANDOFF (FINISHED) 1" WIDE 78" LONG INSULATED.
2	Item#118-Main Right	FIELD WRAPPER 12.00" HIGH FRONT. RIGHT END STANDOFF (FINISHED) 1" WIDE 78" LONG INSULATED. RISER SENSOR INSTALL BIN PLEN.
3	Item#118 - Main left	FIELD WRAPPER 12.00" HIGH FRONT, LEFT. LEFT QUARTER END PANEL 28" TOP WIDTH, 0" BOTTOM WIDTH, 23" HIGH 430 SS. FIELD WRAPPER 12.00" HIGH FRONT, LEFT, RIGHT.
4	Item #90	LEFT END STANDOFF (FINISHED) 1" WIDE 54" LONG INSULATED. RISER SENSOR INSTALL BIN PLEN.
5	Item #58	RIGHT VERTICAL END PANEL 27" TOP WIDTH, 21" BOTTOM WIDTH, 84" HIGH INSULATED 430 SS. FIELD WRAPPER 12.00" HIGH FRONT, LEFT. FINISHED BACK-ISUREV INSTALL 144.00" LONG, (FILTERS TO THE FRONT). CONDENSATE GUTTER.

ETL - ND-2

ETL LISTING DESCRIPTION BLOCK
THE CAPTIVE AIRE MODEL ND-2 HAS BEEN U.L. 710 TESTED, LISTED, AND APPROVED TO EXHAUST A MINIMUM OF 150 CFM PER LINEAR FOOT OVER 450 DEGREE COOKING EQUIPMENT

ETL LISTING DESCRIPTION BLOCK
THE CAPTIVE AIRE MODEL ND-2 HAS BEEN U.L. 710 TESTED, LISTED, AND APPROVED TO EXHAUST A MINIMUM OF 200 CFM PER LINEAR FOOT OVER 600 DEGREE COOKING EQUIPMENT

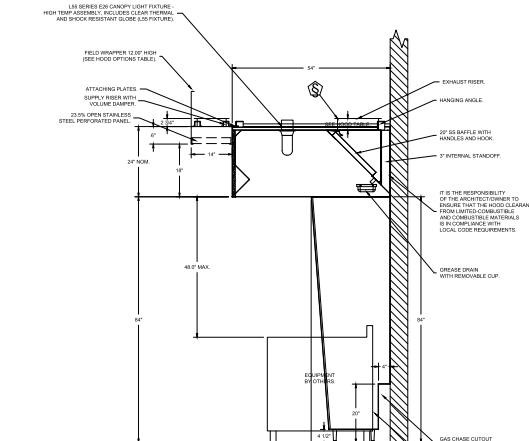
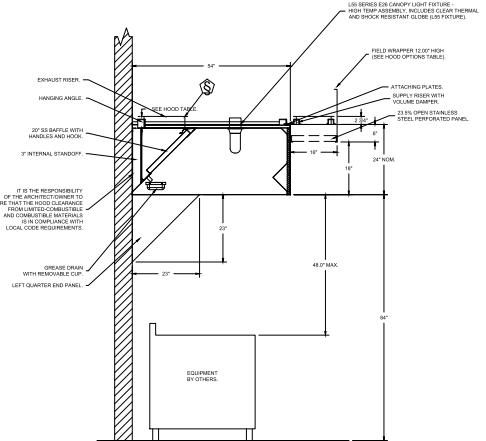
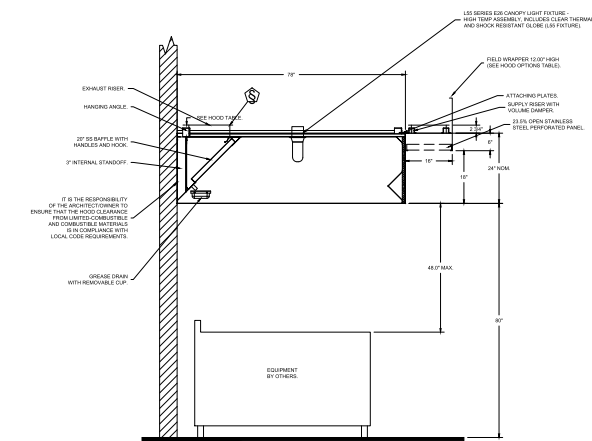
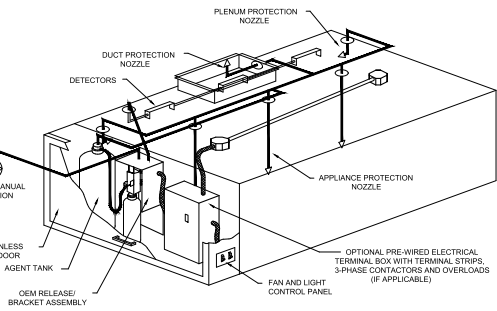
CAPTIVE-AIRE HOODS ARE BUILT IN COMPLIANCE WITH

NFPA #86
NSF

E.T.L. LISTED 102900319PRT-001 TO UL 710 & ULC710 STANDARDS

FIRE SYSTEM INFORMATION - JOB#5572930

FIRE SYSTEM NO	TAG	TYPE	SIZE	FLOW FRONT	SYSTEM	LOCATION ON HOOD
1	92	ANSUL R102	3.0	3.0/3.0/3.0	3	FIRE CABINET RIGHT
2	102	ANSUL R102	3.0/3.0/3.0	34	3	FIRE CABINET LEFT



REVISIONS

NO	DESCRIPTION	DATE

CAPTIVEAIRE
Southern California Office
3002 Dow Ave., Suite 410, Tustin, CA 92780 PH: (714) 857-1500 FAX: (949) 227-9975 EMAIL: nage@captivaire.com

OWNER
project no. | BUSR-0373

DESIGNER
architect + engineer

RESTAURANT BRAWOUSE

project info
7151 W. RAY ROAD
CHANDLER, ARIZONA 85226

prototype:
PROTO - 2020 - PL

issue dates

submission:	date:
PLANNING SUBMITTAL	08/17/2022
HEALTH SUBMITTAL	09/17/2022
BUILDING PERMIT CONSTRUCTION	07/01/2022

revisions:

NO	DATE
086	07/26/2022

DATE: 8/2/2022

DWG.#: 5572930

DRAWN BY: DAB

SCALE: 3/4" = 1'-0"

MASTER DRAWING

SHEET NO.
1

DISCLAIMER:
The construction documentation contained on this sheet was not prepared by WD Partners, Inc. and is included within the set for reference only.

project no. | BUSR-0373

OWNER



project info

7151 W. RAY ROAD
CHANDLER, ARIZONA 85226

prototype:
PROTO - 2020 - PL

issue dates

submission:	date:
PLANNING SUBMITTAL	08/17/2022
HEALTH SUBMITTAL	09/17/2022
BUILDING PERMIT CONSTRUCTION	07/01/2022

revisions:

NO	DATE
086	07/26/2022

DATE: 8/2/2022

DWG.#: 5572930

DRAWN BY: DAB

SCALE: 3/4" = 1'-0"

MASTER DRAWING

SHEET NO.

1

HOOD DETAILS
M4.0

THE CONSTRUCTION DOCUMENT CONTAINED ON THIS SHEET WAS NOT PREPARED BY WJD PARTNERS, INC. AND IS INCLUDED WITHIN THIS SET FOR REFERENCE ONLY FOR THE PURPOSES PERTAINING TO THIS PROJECT. WJD PARTNERS DOES NOT REVIEW THE CONSTRUCTION DOCUMENTATION ON THIS SHEET FOR ERRORS, OMISSIONS, ACCURACY, OR CORRECTNESS AND BY INCLUDING THIS SHEET WITHIN THIS CONSTRUCTION SET, WJD PARTNERS DOES NOT REPRESENT THAT SUCH INFORMATION ON THIS SHEET IS ACCURATE, COMPLETE AND THAT THAT INFORMATION HAS NOT BEEN OMITTED OR THAT IT COMPLIES WITH ALL CURRENT APPLICABLE LOCAL CODES, RESTRICTIONS AND REQUIREMENTS.

REVISIONS		
NO.	DESCRIPTION	DATE
Δ		
Δ		
Δ		

DISCLAIMER:
The construction documentation contained on this sheet was not prepared by WJD Partners, Inc. and is included within the set FOR REFERENCE ONLY.

project no. | BJSB.03373

OWNER



RESTAURANT BREWHOUSE

project info

7151 W. RAY ROAD
CHANDLER, ARIZONA 85226

prototype:
PROTO - 2020 - PL

issue dates

submission:	date:
PLANNING SUBMITTAL	08/17/2022
HEALTH SUBMITTAL	08/17/2022
BUILDING PERMIT CONSTRUCTION	07/01/2022

revisions: none

CAPITVE FIRE
www.capitivefire.com
Southern California Office
3002 Dow Ave. - Suite 410, Tustin, CA 92780 PHONE: (714) 857-1500 FAX: (818) 227-8975 EMAIL: nage@capitivefire.com

BJ's - Chandler, AZ - R2
7151 W. Ray rd.,
CHANDLER, AZ, 85226

DATE: 8/2/2022

DWG.#: 5572930

DRAWN BY: DAB

SCALE: 3/4" = 1'-0"

MASTER DRAWING

SHEET NO. 2

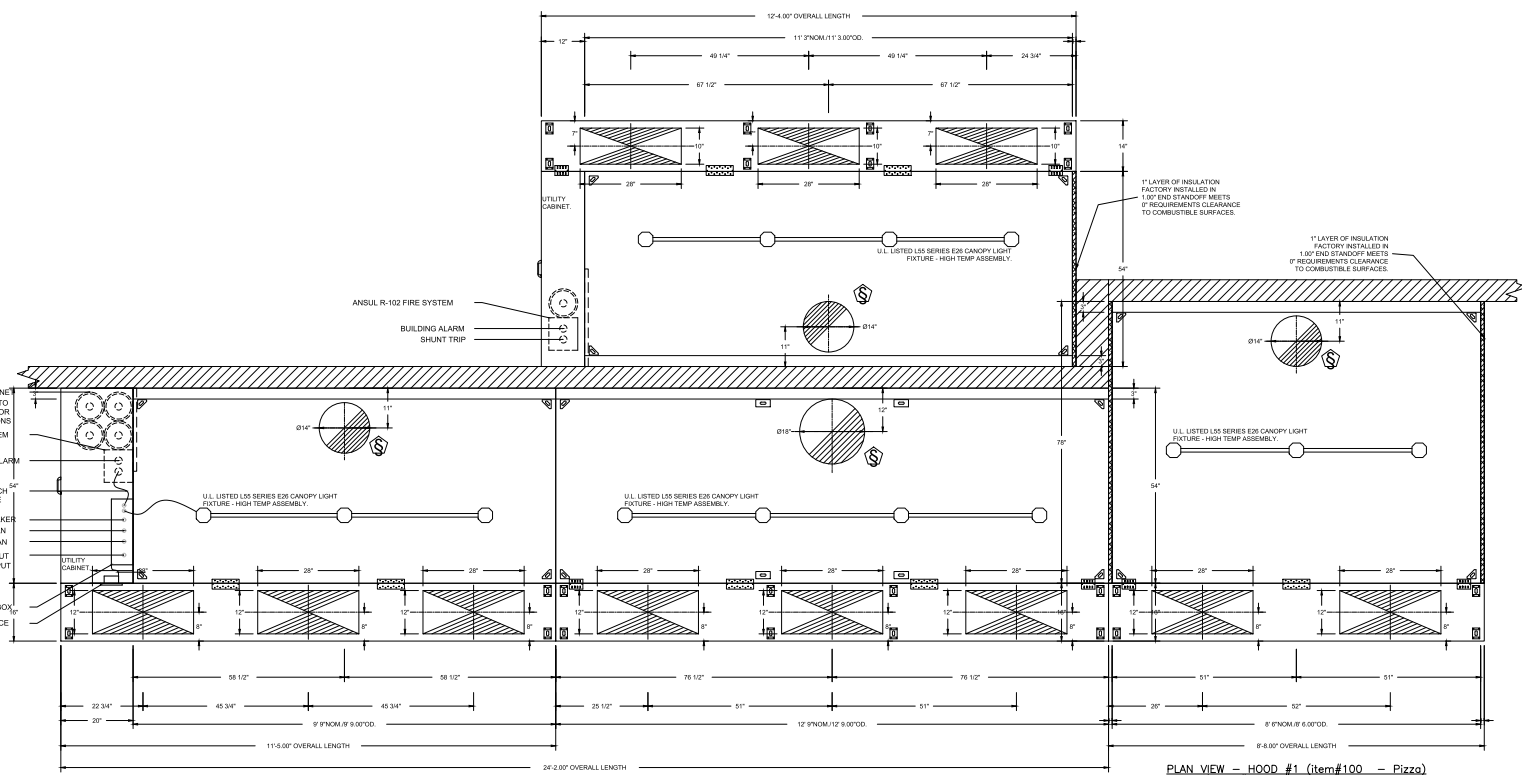
FOR REFERENCE ONLY

sheet info



PROGRESS SET 08-08-2022 NOT FOR BIDS OR CONSTRUCTION

PLAN VIEW - HOOD #4 (item #90)
11' 3.00" LONG 5424ND-2-PSP-F



PLAN VIEW - HOOD #3 (item #118 - Main left)
9' 9.00" LONG 5424ND-2-PSP-F

PLAN VIEW - HOOD #2 (item #118 - Main Right)
12' 9.00" LONG 5424ND-2-PSP-F

PLAN VIEW - HOOD #1 (item #100 - Pizza)
8' 6.00" LONG 7824ND-2-PSP-F

NOTE: ADDITIONAL HANGING ANGLES PROVIDED FOR HOODS 12 AND LONGER.

UTILITY CABINET (TYPICAL CONNECTIONS, REFER TO DETAILED WIRING DIAGRAMS FOR RESPONSIBILITY AND CONNECTIONS)
ANSUL R-102 FIRE SYSTEM
BUILDING ALARM
PRE-WIRED TO ANSUL MICROSWITCH WHEN BOTH PROVIDED BY CAPTIVEFIRE
SHUNT TRIP BREAKER INPUT FOR EXHAUST/SUPPLY FAN OUTPUT FOR EXHAUST/SUPPLY FAN
120V 15AMP LIGHT INPUT
120V 15AMP CONTROL INPUT
ELECTRICAL HOOD CONTROL BOX
LIGHT/FAN CONTROL INTERFACE

THE CONSTRUCTION DOCUMENT CONTAINED ON THIS SHEET WAS NOT PREPARED BY WD PARTNERS, INC. AND IS INCLUDED WITH THIS SET FOR REFERENCE ONLY FOR THE PURPOSES PERTAINING TO THIS PROJECT. WD PARTNERS DOES NOT REVIEW THE CONSTRUCTION DOCUMENTATION ON THIS SHEET FOR ERRORS, OMISSIONS, ACCURACY, OR CORRECTNESS AND BY INCLUDING THIS SHEET WITH THIS CONSTRUCTION SET, WD PARTNERS DOES NOT REPRESENT THAT SUCH INFORMATION ON THIS SHEET IS ACCURATE, COMPLETE AND THAT THAT INFORMATION HAS NOT BEEN OMITTED OR THAT IT COMPLES WITH ALL CURRENT APPLICABLE LOCAL CODES, RESTRICTIONS AND REQUIREMENTS.

EXHAUST FAN INFORMATION - JOB#5572930

FAN UNIT NO	TAG	QTY	FAN UNIT MODEL #	MANUFACTURER	CFM	ESP	RPM	MOTOR ENCL.	HP	BHP	PHASE	VOLT	FLA	DISCHARGE VELOCITY	WEIGHT (LBS)	SONES
1	EF-1 (PIZZA)	1	DUR8HFA	CAPITVEAIRE	1884	0.750	1279	TEAO-ECM	0.750	0.4030	1	115	8.9	569 FPM	93	12.1
2	EF-2 (MAIN RIGHT)	1	DU190HFA	CAPITVEAIRE	3375	1.600	1410	ODP-PREMIUM	3.000	1.9490	3	208	9.5	779 FPM	184	22
3	EF-3 (MAIN LEFT)	1	DUR8HFA	CAPITVEAIRE	1950	0.750	1298	TEAO-ECM	0.750	0.4220	1	115	8.9	617 FPM	93	12.6
4	EF-4 (PREP)	1	DUR8HFA	CAPITVEAIRE	1800	0.800	1182	TEAO-ECM	0.750	0.3180	1	115	8.9	870 FPM	93	10.6
5	EF-5 (DISH)	1	DUR8HFA	CAPITVEAIRE	1900	0.400	1128	ODP	0.750	0.2700	1	115	9.8	601 FPM	91	10.3
6	EF-6 (PUBLIC REST)	1	DR30HFA	CAPITVEAIRE	510	0.400	1109	ODP	0.250	0.0770	1	115	3.8		58	6.7
7	EF-7 (KITCHEN VEST)	1	DR10HFA	CAPITVEAIRE	400	0.250	1449	TEAO-ECM	0.166	0.0640	1	115	1.9		49	6.3
8	EF-8 (BEER COOLER)	1	DR12HFA	CAPITVEAIRE	380	0.400	1279	ODP	0.180	0.0910	1	115	1.9		48	7
9	TF-1 (DATA)	1	CFA 500CA	CAPITVEAIRE	400	0.250	891	GENERALPURPOSE	0.310	0.1880	1	115	2.2		34	N/A

FAN OPTIONS

FAN UNIT NO	TAG	QTY	DESCRIPTION
1	EF-1 (PIZZA)	1	GREASE BOX
		1	FAN BASE CERAMIC SEAL - INSTALLED AT PLANT - FOR GREASE DUCTS
		1	ECM WIRING PACKAGE - EXHAUST - MODBUS CONTROL -MSC- (TELCO), CCW ROTATION
		1	2 YEAR PARTS WARRANTY
2	EF-2 (MAIN RIGHT)	1	GREASE BOX
		1	EXHAUST FAN HEAT BAFFLE
		1	2 YEAR PARTS WARRANTY
		1	GREASE BOX
3	EF-3 (MAIN LEFT)	1	FAN BASE CERAMIC SEAL - INSTALLED AT PLANT - FOR GREASE DUCTS
		1	ECM WIRING PACKAGE - EXHAUST - MODBUS CONTROL -MSC- (TELCO), CCW ROTATION
		1	2 YEAR PARTS WARRANTY
		1	GREASE BOX
4	EF-4 (PREP)	1	FAN BASE CERAMIC SEAL - INSTALLED AT PLANT - FOR GREASE DUCTS
		1	ECM WIRING PACKAGE - EXHAUST - MODBUS CONTROL -MSC- (TELCO), CCW ROTATION
		1	2 YEAR PARTS WARRANTY
		1	2 YEAR PARTS WARRANTY
5	EF-5 (DISH)	1	2 YEAR PARTS WARRANTY
		1	15-BDD DAMPER
		1	2 YEAR PARTS WARRANTY
		1	12-BDD DAMPER
6	EF-6 (PUBLIC REST)	1	15-BDD DAMPER
		1	2 YEAR PARTS WARRANTY
		1	12-BDD DAMPER
		1	THERMOSTAT CONTROL
7	EF-7 (KITCHEN VEST)	1	ECM WIRING PACKAGE - MANUAL OR 0-10VDC REFERENCE SPEED CONTROL -RTC- (TELCO MOTOR), CCW ROTATION
		1	2 YEAR PARTS WARRANTY
		1	12-BDD DAMPER
		1	2 YEAR PARTS WARRANTY
8	EF-8 (BEER COOLER)	1	2 YEAR PARTS WARRANTY
		1	2 YEAR PARTS WARRANTY
9	TF-1 (DATA)	1	2 YEAR PARTS WARRANTY

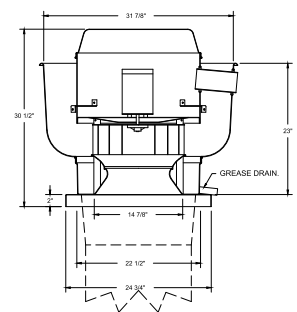
FAN ACCESSORIES

FAN UNIT NO	TAG	EXHAUST			SUPPLY			
		GREASE CUP	GRAVITY DAMPER	WALL MOUNT	SIDE DISCHARGE	GRAVITY DAMPER	MOTORIZED DAMPER	WALL MOUNT
1	EF-1 (PIZZA)	YES						
2	EF-2 (MAIN RIGHT)	YES						
3	EF-3 (MAIN LEFT)	YES						
4	EF-4 (PREP)	YES						
5	EF-5 (DISH)							
6	EF-6 (PUBLIC REST)		YES					
7	EF-7 (KITCHEN VEST)		YES					
8	EF-8 (BEER COOLER)		YES					
9	TF-1 (DATA)							

CURB ASSEMBLIES

NO	ON FAN	TAG	WEIGHT	ITEM	SIZE
1	#1	EF-1 (PIZZA)	41 LBS	CURB	23.000"W X 23.000"L X 24.000"H ALONG LENGTH, RIGHT VENTED HINGED.
2	#2	EF-2 (MAIN RIGHT)	37 LBS	CURB	26.500"W X 26.900"L X 20.000"H ALONG LENGTH, RIGHT VENTED.
3	#3	EF-3 (MAIN LEFT)	41 LBS	CURB	23.000"W X 23.000"L X 24.000"H ALONG LENGTH, RIGHT VENTED HINGED.
4	#4	EF-4 (PREP)	41 LBS	CURB	23.000"W X 23.000"L X 24.000"H ALONG LENGTH, RIGHT VENTED HINGED.
5	#5	EF-5 (DISH)	29 LBS	CURB	23.000"W X 23.000"L X 18.000"H ALONG LENGTH, RIGHT.
6	#6	EF-6 (PUBLIC REST)	24 LBS	CURB	19.500"W X 19.500"L X 18.000"H ALONG LENGTH, RIGHT HINGED.
7	#7	EF-7 (KITCHEN VEST)	22 LBS	CURB	17.500"W X 17.500"L X 18.000"H ALONG LENGTH, RIGHT.
8	#8	EF-8 (BEER COOLER)	22 LBS	CURB	17.500"W X 17.500"L X 18.000"H ALONG LENGTH, RIGHT.

FAN #1 (EF-1 (PIZZA)), #3 (EF-3 (MAIN LEFT)), #4 (EF-4 (PREP)), DUR8HFA EXHAUST FAN

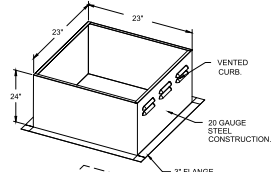


FEATURES:

- DIRECT DRIVE CONSTRUCTION (NO BELTS/PULLEYS).
 - ROOF MOUNTED FANS.
 - RESTAURANT MODEL.
 - UL705 AND UL762 AND UL6-848
 - VARIABLE SPEED CONTROL.
 - INTERNAL WIRING.
 - THERMAL OVERLOAD PROTECTION (SINGLE PHASE).
 - HIGH HEAT OPERATION 300°F (149°C).
 - GREASE CLASSIFICATION TESTING.
 - NEMA 3R SAFETY DISCONNECT SWITCH.
- NORMAL TEMPERATURE TEST**
EXHAUST FAN MUST OPERATE CONTINUOUSLY WHILE EXHAUSTING AIR AT 300°F (149°C) UNTIL ALL FAN PARTS HAVE REACHED THERMAL EQUILIBRIUM AND WITHOUT ANY DETRIMENTAL EFFECTS TO THE FAN WHICH WOULD CAUSE UNSAFE OPERATION.
- ABNORMAL FLAME-UP TEST**
EXHAUST FAN MUST OPERATE CONTINUOUSLY WHILE EXHAUSTING BURNING GREASE VAPORS AT 800°F (427°C) FOR A PERIOD OF 15 MINUTES WITHOUT THE FAN BECOMING DAMAGED TO ANY EXTENT THAT COULD CAUSE AN UNSAFE CONDITION.

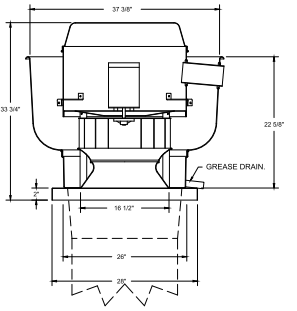
OPTIONS:

- GREASE BOX.
- FAN BASE CERAMIC SEAL - INSTALLED AT PLANT - FOR GREASE DUCTS.
- ECM WIRING PACKAGE - EXHAUST MODBUS CONTROL -MSC- (TELCO), CCW ROTATION.
- 2 YEAR PARTS WARRANTY.



PITCHED CURBS ARE AVAILABLE FOR PITCHED ROOFS.
SPECIFY PITCH: EXAMPLE: 7/12 PITCH = 30° SLOPE.

FAN #2 (DUR8HFA - EXHAUST FAN (EF-2 (MAIN RIGHT)))

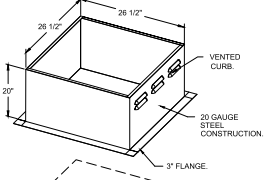


FEATURES:

- DIRECT DRIVE CONSTRUCTION (NO BELTS/PULLEYS).
 - ROOF MOUNTED FANS.
 - RESTAURANT MODEL.
 - UL705 AND UL762 AND UL6-848
 - VARIABLE SPEED CONTROL.
 - INTERNAL WIRING.
 - THERMAL OVERLOAD PROTECTION (SINGLE PHASE).
 - HIGH HEAT OPERATION 300°F (149°C).
 - GREASE CLASSIFICATION TESTING.
 - NEMA 3R SAFETY DISCONNECT SWITCH.
- NORMAL TEMPERATURE TEST**
EXHAUST FAN MUST OPERATE CONTINUOUSLY WHILE EXHAUSTING AIR AT 300°F (149°C) UNTIL ALL FAN PARTS HAVE REACHED THERMAL EQUILIBRIUM AND WITHOUT ANY DETRIMENTAL EFFECTS TO THE FAN WHICH WOULD CAUSE UNSAFE OPERATION.
- ABNORMAL FLAME-UP TEST**
EXHAUST FAN MUST OPERATE CONTINUOUSLY WHILE EXHAUSTING BURNING GREASE VAPORS AT 800°F (427°C) FOR A PERIOD OF 15 MINUTES WITHOUT THE FAN BECOMING DAMAGED TO ANY EXTENT THAT COULD CAUSE AN UNSAFE CONDITION.

OPTIONS:

- GREASE BOX.
- EXHAUST FAN HEAT BAFFLE.
- 2 YEAR PARTS WARRANTY.



PITCHED CURBS ARE AVAILABLE FOR PITCHED ROOFS.
SPECIFY PITCH: EXAMPLE: 7/12 PITCH = 30° SLOPE.

REVISIONS	
DESCRIPTION	DATE

CAPITVEAIRE
Southern California Office
www.capitveaire.com
3002 Dow Ave - Suite 410, Torrance, CA 90780 PH: (714) 857-1500 FAX: (919) 227-8975 EMAIL: rgs@capitveaire.com

BJ's - Chandler, AZ - R2
7151 W. Ray rd.,
CHANDLER, AZ, 85226

DATE: 8/2/2022
DWG.#: 5572930
DRAWN BY: DAB
SCALE: 3/4" = 1'-0"
MASTER DRAWING

SHEET NO. 4

DISCLAIMER:
The construction documentation contained on this sheet was not prepared by WD Partners, Inc. and is included within the set FOR REFERENCE ONLY.

project no. | BJSB.0373
OWNER



project info
7151 W. RAY ROAD
CHANDLER, ARIZONA 85226
prototype: PROTO - 2020 - PL

issue dates
submission: 08/17/2022
PLANNING SUBMITTAL: 08/17/2022
HEALTH SUBMITTAL: 08/17/2022
BUILDING PERMIT CONSTRUCTION: 07/01/2022

revisions: 088
07/26/2022

designed by:
checked by:

seal
FOR REFERENCE ONLY

sheet info
HOOD DETAILS
M4.3

THE CONSTRUCTION DOCUMENT CONTAINED ON THIS SHEET WAS NOT PREPARED BY W/D PARTNERS, INC. AND IS INCLUDED WITHIN THIS SET FOR REFERENCE ONLY FOR THE PURPOSES PERTAINING TO THIS PROJECT. W/D PARTNERS DID NOT REVIEW THE CONSTRUCTION DOCUMENTATION ON THIS SHEET FOR ERRORS, OMISSIONS, ACCURACY, OR CORRECTNESS AND BY INCLUDING THIS SHEET WITHIN THIS CONSTRUCTION SET, W/D PARTNERS DOES NOT REPRESENT THAT SUCH INFORMATION ON THIS SHEET IS ACCURATE, COMPLETE, AND THAT THAT INFORMATION HAS NOT BEEN OMITTED OR THAT IT COMPLIES WITH ALL CURRENT APPLICABLE LOCAL CODES, RESTRICTIONS, AND REQUIREMENTS.

DISCLAIMER:
The construction documentation contained on this sheet was not prepared by W/D Partners, Inc. and is included within the set FOR REFERENCE ONLY.

project no. | BJSB-R373
OWNER



project info
7151 W. RAY ROAD
CHANDLER, ARIZONA 85226

prototype:
PROTO - 2020 - PL

issue dates

PLANNING SUBMITTAL	08/17/2022
HEALTH SUBMITTAL	09/17/2022
BUILDING PERMIT CONSTRUCTION	07/01/2022

revisions: 088
07/26/2022

DATE: 8/2/2022
DWG.#: 5572930

DRAWN BY: DAB
SCALE: 3/4" = 1'-0"
MASTER DRAWING

SHEET NO.
5

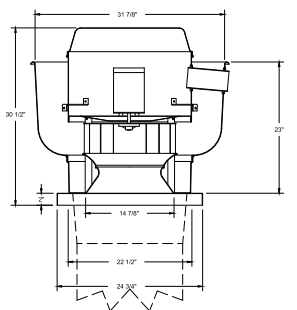
HOOD DETAILS
M4.4

REVISIONS

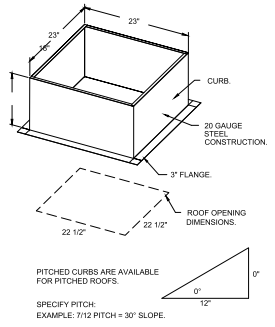
DESCRIPTION	DATE

CAPTIVE WIRE
Southern California Office
3002 Dow Ave., Suite 410, Tustin, CA 92780 PHONE: (714) 857-1500 FAX: (818) 227-8975 EMAIL: info@captivewire.com

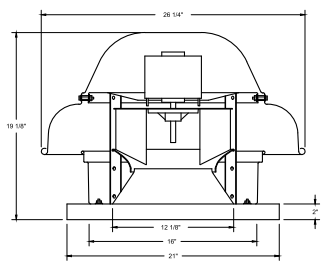
FAN #5 DR21NFA - EXHAUST FAN (ET-3) (R000)



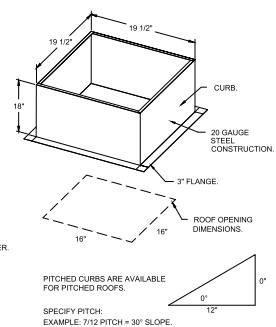
- FEATURES:**
- DIRECT DRIVE CONSTRUCTION (NO BELTS/PULLEYS)
 - ROOF MOUNTED FANS
 - RESTAURANT MODEL
 - UL705
 - VARIABLE SPEED CONTROL
 - INTERNAL WIRING
 - THERMAL OVERLOAD PROTECTION (SINGLE PHASE)
 - HIGH HEAT OPERATION 300°F (149°C)
 - NEMA 3R SAFETY DISCONNECT SWITCH
- NORMAL TEMPERATURE TEST:**
EXHAUST FAN MUST OPERATE CONTINUOUSLY WHILE EXHAUSTING AIR AT 300°F (149°C) UNTIL ALL FAN PARTS HAVE REACHED THERMAL EQUILIBRIUM, AND WITHOUT ANY DETRIMENTARY EFFECTS TO THE FAN WHICH WOULD CAUSE UNSAFE OPERATION.
- OPTIONS:**
2 YEAR PARTS WARRANTY.



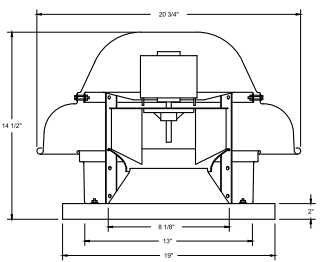
FAN #6 DR20RFA - EXHAUST FAN (ET-3) (PUBLIC REST)



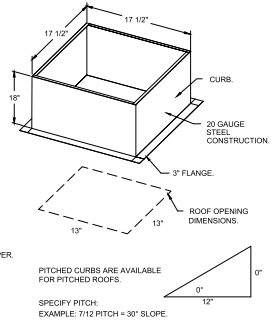
- FEATURES:**
- DIRECT DRIVE CONSTRUCTION (NO BELTS/PULLEYS)
 - ROOF MOUNTED FANS
 - UL705
 - SAFETY DISCONNECT
 - STANDARD BIRD SCREEN
 - SPEED CONTROL
- OPTIONS:**
1 1/2\"/>



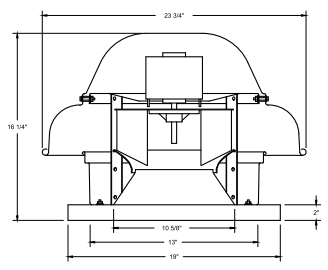
FAN #7 DR19RFA - EXHAUST FAN (ET-7) (KITCHEN VEST)



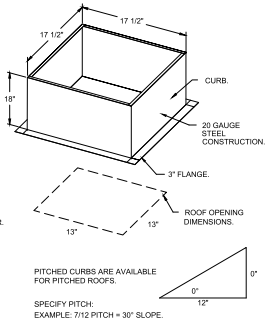
- FEATURES:**
- DIRECT DRIVE CONSTRUCTION (NO BELTS/PULLEYS)
 - ROOF MOUNTED FANS
 - UL705
 - SAFETY DISCONNECT
 - STANDARD BIRD SCREEN
 - SPEED CONTROL
- OPTIONS:**
1 1/2\"/>



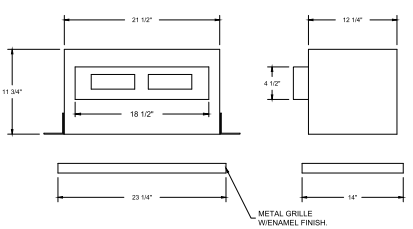
FAN #8 DR12NFA - EXHAUST FAN (ET-3) (BEER COOLER)



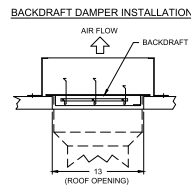
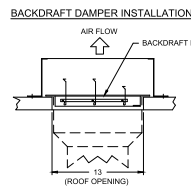
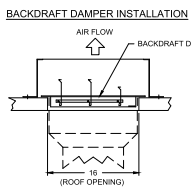
- FEATURES:**
- DIRECT DRIVE CONSTRUCTION (NO BELTS/PULLEYS)
 - ROOF MOUNTED FANS
 - UL705
 - SAFETY DISCONNECT
 - STANDARD BIRD SCREEN
 - SPEED CONTROL
- OPTIONS:**
1 1/2\"/>



FAN #9 CFA 300CA - EXHAUST FAN (IT-1) (DATA)

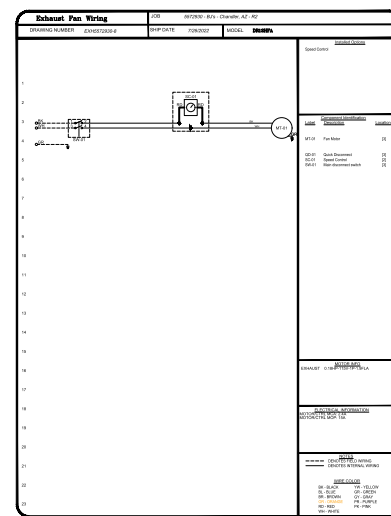
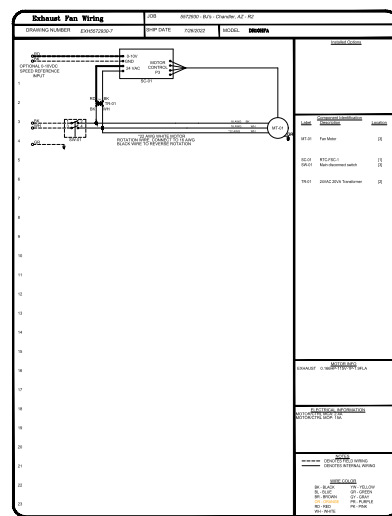
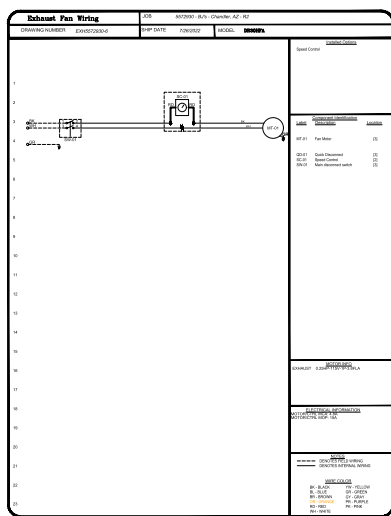
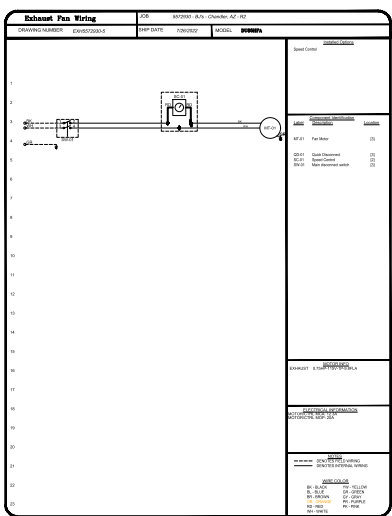
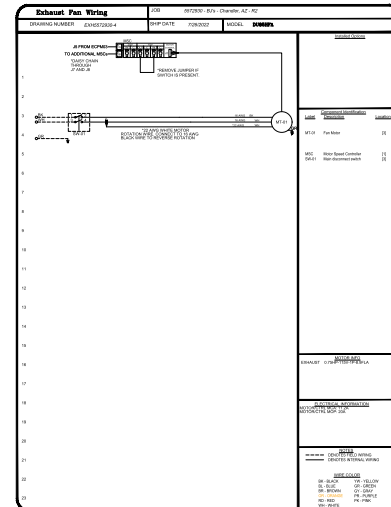
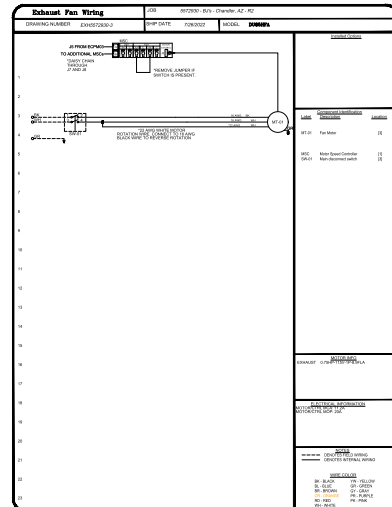
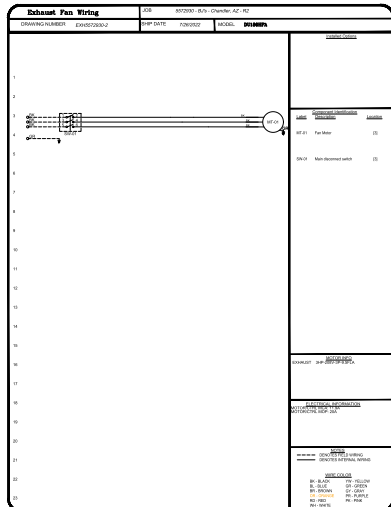
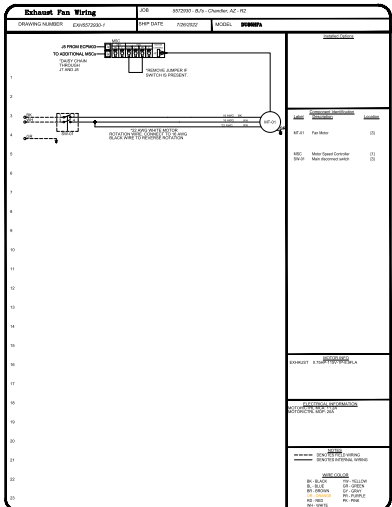


- FEATURES:**
- 1/2\"/>
- OPTIONS:**
2 YEAR PARTS WARRANTY.



PROGRESS SET 08-08-2022 NOT FOR BIDS OR CONSTRUCTION

THE CONSTRUCTION DOCUMENT CONTAINED ON THIS SHEET WAS NOT PREPARED BY WD PARTNERS, INC. AND IS INCLUDED WITHIN THIS SET FOR REFERENCE ONLY FOR THE PURPOSES PERTAINING TO THIS PROJECT. WD PARTNERS DID NOT REVIEW THE CONSTRUCTION DOCUMENTATION ON THIS SHEET FOR ERRORS, OMISSIONS, ACCURACY, OR COMPLETENESS AND BY INCLUDING THIS SHEET WITHIN THIS CONSTRUCTION SET, WD PARTNERS DOES NOT REPRESENT THAT SUCH INFORMATION ON THIS SHEET IS ACCURATE, COMPLETE AND THAT THAT INFORMATION WAS NOT BEEN OMITTED OR THAT IT COMPLIES WITH ALL CURRENT APPLICABLE LOCAL CODES, RESTRICTIONS AND REQUIREMENTS.



REVISIONS	DESCRIPTION	DATE
1		
2		
3		
4		
5		
6		
7		
8		
9		
10		
11		
12		
13		
14		
15		
16		
17		
18		
19		
20		
21		
22		
23		
24		
25		
26		
27		
28		
29		
30		

CAPTIVE WIRE
 Southern California Office
 3002 Dow Ave., Suite 410, Tustin, CA 92780 PHONE: (714) 857-1500 FAX: (818) 227-8975 EMAIL: info@captivewire.com

BJ's - Chandler, AZ - R2
 7151 W. Ray rd.,
 CHANDLER, AZ, 85226

DATE: 8/2/2022
 DWG.#: 5572930
 DRAWN BY: DAB
 SCALE: 3/4" = 1'-0"
 MASTER DRAWING

SHEET NO. 6

architect + engineer

DISCLAIMER:
 The construction documentation contained on this sheet was not prepared by WD Partners, Inc. and is included within this set FOR REFERENCE ONLY.

project no. | BJSB.00373
 OWNER



project info
 7151 W. RAY ROAD
 CHANDLER, ARIZONA 85226

prototype:
 PROTO - 2020 - PL

issue dates
 submission: 08/17/2022
 PLANNING SUBMITTAL: 08/17/2022
 HEALTH SUBMITTAL: 08/17/2022
 BUILDING PERMIT: 07/01/2022
 CONSTRUCTION: 07/01/2022

revisions: 08/07/2022

designed by
 checked by
 seal

FOR REFERENCE ONLY



PROGRESS SET 08-08-2022 NOT FOR BIDS OR CONSTRUCTION

THE CONSTRUCTION DOCUMENT CONTAINED ON THIS SHEET WAS NOT PREPARED BY WD PARTNERS, INC. AND IS INCLUDED WITHIN THIS SET FOR REFERENCE ONLY FOR THE PURPOSES PERTAINING TO THIS PROJECT. WD PARTNERS DID NOT REVIEW THE CONSTRUCTION DOCUMENTATION ON THIS SHEET FOR ERRORS, OMISSIONS, ACCURACY, OR CORRECTNESS AND BY INCLUDING THIS SHEET WITHIN THIS CONSTRUCTION SET, WD PARTNERS DOES NOT REPRESENT THAT SUCH INFORMATION ON THIS SHEET IS ACCURATE, COMPLETE, AND THAT THAT INFORMATION HAS NOT BEEN OMITTED OR THAT IT COMPLIES WITH ALL CURRENT APPLICABLE LOCAL CODES, RESTRICTIONS AND REQUIREMENTS.

architect + engineer

DISCLAIMER:
The construction documentation contained on this sheet was not prepared by WD Partners, Inc. and is included within the set FOR REFERENCE ONLY.

project no. | BJSB.0373

OWNER



RESTAURANT BREWHOUSE

project info

7151 W. RAY ROAD
CHANDLER, ARIZONA 85226

prototype:
PROTO - 2020 - PL

issue dates

submission:	date
PLANNING SUBMITTAL	08/17/2022
HEALTH SUBMITTAL	08/17/2022
BUILDING PERMIT CONSTRUCTION	07/01/2022

revisions:

no.	date
1	07/26/2022

designed by

checked by

seal

FOR REFERENCE ONLY

sheet info



PROGRESS SET 08-08-2022 NOT FOR BIDS OR CONSTRUCTION

REVISIONS	DESCRIPTION	DATE
1		
2		
3		
4		
5		
6		
7		
8		
9		
10		



3002 Dow Ave., Suite 410, Tustin, CA 92780 PHONE: (714) 857-1500 FAX: (818) 227-5975 EMAIL: info@capwire.com

CAPWIRE
Southern California Office
www.capwire.com

BJ's - Chandler, AZ - R2
7151 W. Ray rd.,
CHANDLER, AZ, 85226

DATE: 8/2/2022

DWG.#: 5572930

DRAWN BY: DAB

CHECKED BY:

SCALE: 3/4" = 1'-0"

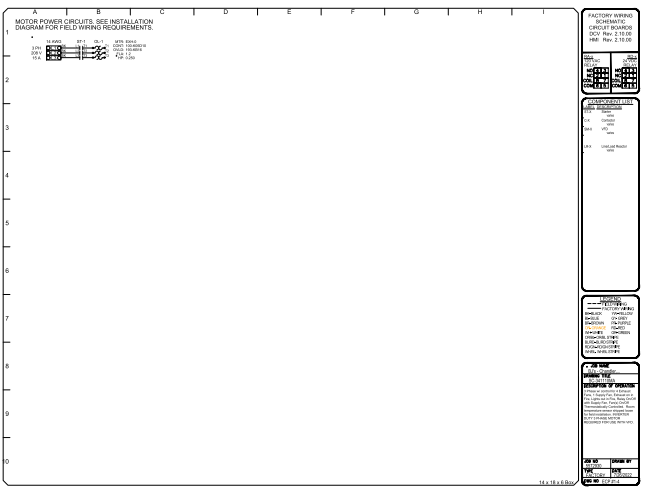
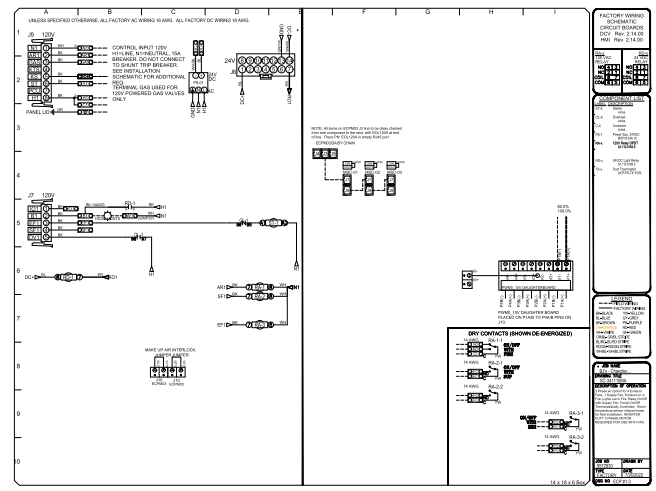
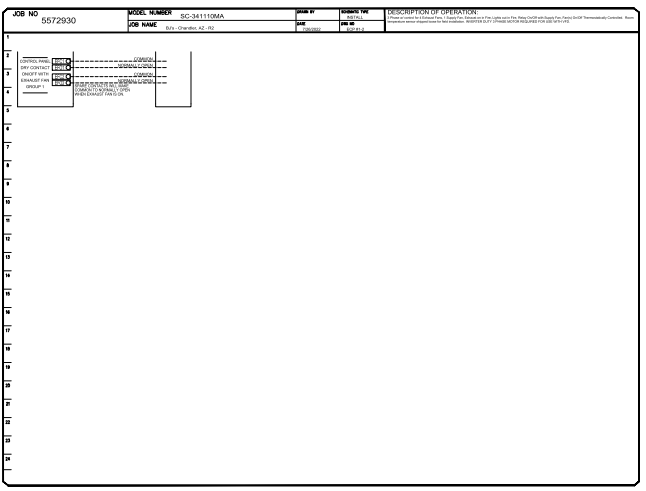
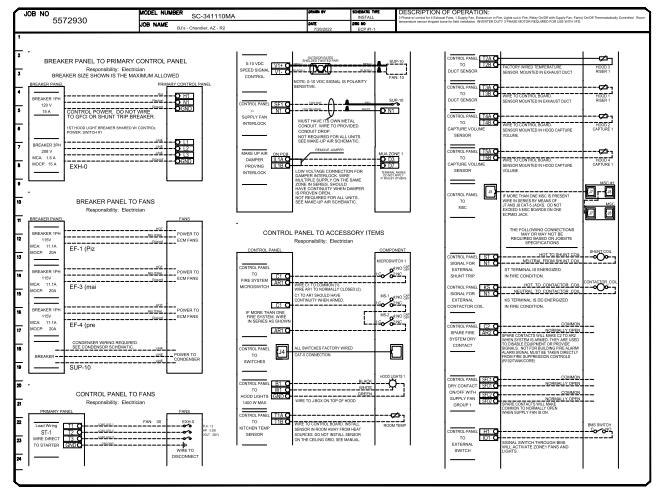
MASTER DRAWING

SHEET NO. 7

ELECTRICAL PACKAGE - JOB#5572930			
NO	TAG	PACKAGE #	LOCATION
1		SC-341109A	UTILITY CABINET LEFT

SWITCHES		OPTION	
LOCATION	QUANTITY		
03- UTILITY CABINET LEFT	1 LIGHT	SMART CONTROLS THERMOSTATIC CONTROL, W/ RELAY ON/OFF WITH SUPPLY	
HOOD # 3	1 FAN		

FANS CONTROLLED					
FAN TAG	TYPE	#	HP	VOL. F.T.	R.A.
EF-1 (PHS)	EXHAUST	1	0.750	115	8.8
EF-2 (PHS)	EXHAUST	1	0.750	115	8.8
EF-3 (PHS)	EXHAUST	1	0.750	115	8.8
EF-4 (PHS)	EXHAUST	1	0.750	115	8.8
EF-5 (PHS)	EXHAUST	3	0.250	300	1.2

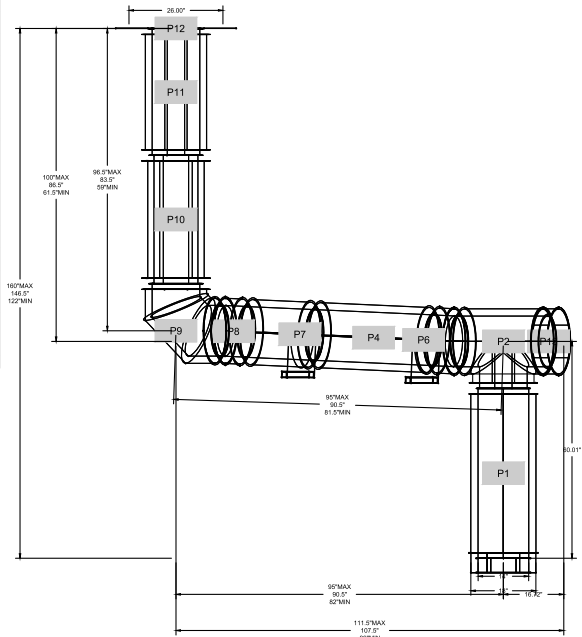


THE CONSTRUCTION DOCUMENT CONTAINED ON THIS SHEET WAS NOT PREPARED BY WD PARTNERS, INC. AND IS INCLUDED WITHIN THIS SET FOR REFERENCE ONLY FOR THE PURPOSES PERTAINING TO THIS PROJECT. WD PARTNERS DID NOT REVIEW THE CONSTRUCTION DOCUMENTATION ON THIS SHEET FOR ERRORS, OMISSIONS, ACCURACY, OR CORRECTNESS AND BY INCLUDING THIS SHEET WITHIN THIS CONSTRUCTION SET, WD PARTNERS DOES NOT REPRESENT THAT SUCH INFORMATION ON THIS SHEET IS ACCURATE, COMPLETE, AND THAT THAT INFORMATION HAS NOT BEEN OMITTED OR THAT IT COMPLIES WITH ALL CURRENT APPLICABLE LOCAL CODES, RESTRICTIONS AND REQUIREMENTS.

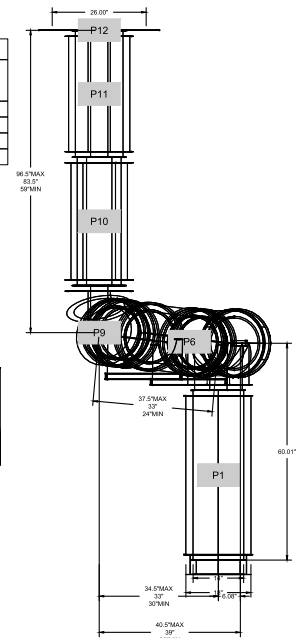
DUCTWORK #1 PARTS - JOB#5572930 DOUBLE WALL

TAG	PART #	CFM	GPM	ZON E	COVEREDBY	SP	WEIGHT	VELOCITY	QTY	DESCRIPTION
P1	DW1447DWLT-2R-S	1894			-0.022	62.39	1771.73		1	DOUBLE WALL DUCT - 14" INNER DUCT, 47" LONG - 2 LAYERS REDUCED CLEARANCE - 18" STAINLESS STEEL OUTER SHELL
P2	DW1402WVTEASY-2R-S	1894		1	-0.09	41.37	1771.73		1	DOUBLE WALL DUCT - 14" INNER TEE DUCT - 2 LAYERS REDUCED CLEARANCE - 18" STAINLESS STEEL OUTER SHELL
P3	DW1402WVWFFSETASY-2R-S	1894			-0.004	12.99	1771.73		1	DOUBLE WALL DUCT - 14" INNER DUCT RISER & 2 DEGREE OFFSET - 2 LAYERS REDUCED CLEARANCE - 18" STAINLESS STEEL OUTER SHELL
P4	DW1435DWLT-2R-S	1894			-0.0165	46.53	1771.73		1	DOUBLE WALL DUCT - 14" INNER DUCT, 35" LONG - 2 LAYERS REDUCED CLEARANCE - 18" STAINLESS STEEL OUTER SHELL
P5	DW1427DWJAJD-2R-S	1894			-0.0065	52.12	1771.73		1	DOUBLE WALL ADJUSTABLE DUCT - 14" INNER DUCT - 2 LAYERS REDUCED CLEARANCE - 18" STAINLESS STEEL OUTER SHELL. MIN LENGTH = 11' / MAX LENGTH = 24.5' / ADJUSTMENT = 13.5' / ADJUSTABLE SECTION MAY NEED TO BE CUT. INCLUDES SINGLE AND DOUBLE WALL "Y" CLAMPS.
P6	DW1822SADKIT					7.25				DUCT - HORIZONTAL SADDLE SUPPORT KIT, USED WITH 18" OD - INCLUDES UNI-STRUT CUT TO LENGTH, DW1822SAD & HARDWARE BAG 4
P7	DW1822SADKIT					7.25				DUCT - HORIZONTAL SADDLE SUPPORT KIT, USED WITH 18" OD - INCLUDES UNI-STRUT CUT TO LENGTH, DW1822SAD & HARDWARE BAG 4
P8	DW1402WVWFFSETASY-2R-S	1894			-0.004	12.99	1771.73		1	DOUBLE WALL DUCT - 14" INNER DUCT RISER & 2 DEGREE OFFSET - 2 LAYERS REDUCED CLEARANCE - 18" STAINLESS STEEL OUTER SHELL
P9	DW1490DWVASY-2R-S	1894			-0.126	33.30	1771.73		1	DOUBLE WALL DUCT - 14" INNER 90 DUCT - 2 LAYERS REDUCED CLEARANCE - 18" STAINLESS STEEL OUTER SHELL
P10	DW1447DWJAJD-2R-S	1894			-0.017	63.18	1771.73		1	DOUBLE WALL ADJUSTABLE DUCT - 14" INNER DUCT - 2 LAYERS REDUCED CLEARANCE - 18" STAINLESS STEEL OUTER SHELL. MIN LENGTH = 11' / MAX LENGTH = 48.5' / ADJUSTMENT = 30.5' / ADJUSTABLE SECTION MAY NEED TO BE CUT. INCLUDES SINGLE AND DOUBLE WALL "Y" CLAMPS.
P11	DW1435DWLTP-2R-S	1894			-0.016	48.06	1771.73		1	DOUBLE WALL DUCT - 14" INNER DUCT, 35" LONG - 2 LAYERS REDUCED CLEARANCE - 18" STAINLESS STEEL OUTER SHELL - USED WITH TRANSITION PLATE
P12	DW23514TP	1894				12.00	1771.73		1	DUCT TO CURB TRANSITION, 23.50" CURB TO 14" DUCT, 16 GA ALUMINIZED, MISC. NON-STANDARD TRANSITION PLATE
SYSTEM AT P12					0.8905	0.00				
P13	DW14DWACCDORCOV-2R-S					22.25			1	DOUBLE WALL DUCT - 14" INNER ACCESS DOOR & 18" ACCESS DOOR COVER WITH CLAMPS - 2 LAYERS REDUCED CLEARANCE - 18" STAINLESS STEEL OUTER SHELL
P14	3M-2009PLUS					0.80			3	DUCT - 3M FIRE BARRIER 2000 PLUS SILICONE - USED AS SEALANT TO SEAL DUCT JOINTS
P15	DW14DWCLASY-2R-S					7.21			4	DUCT - 14" DUCT - 18" DOUBLE "Y" CLAMP - 2R INSULATION & SINGLE "Y" CLAMP INCLUDED - REDUCED CLEARANCE.
TOTAL WEIGHT						452.92				

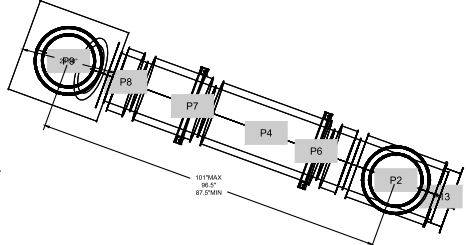
DUCTWORK #1 FRONT VIEW



DUCTWORK #1 SIDE VIEW



DUCTWORK #1 TOP VIEW



DOUBLE WALL FACTORY BUILT DUCTWORK

- ALL DUCTWORK IS REQUIRED TO BE INSTALLED WITH THE MAXIMUM SUPPORT SPACING LISTED BELOW.
- FOR A COMPLETE LIST OF APPROVED SUPPORT METHODS, SEE THE ENTIRE INSTALLATION AND OPERATION MANUAL.
- DUCTWORK SHALL SLOPE NOT LESS THAN 1/16" PER LINEAR FOOT TOWARDS THE HOOD OR AN APPROVED GREASE COLLECTION RESERVOIR.
- WHERE HORIZONTAL DUCTS EXCEED 75 FEET IN LENGTH, THE SLOPE SHALL NOT BE LESS THAN 3/16" PER LINEAR FOOT.

HORIZONTAL	
DUCT DIAMETER	SUPPORT SPACING (FT)
5"	7'
6"	7'
7"	7'
8"	7'
10"	7'
12"	7'
14"	7'
16"	7'
18"	5'
20"	5'
22"	5'
24"	5'
26"	5'
28"	5'
30"	5'
32"	5'
34"	5'
36"	5'

VERTICAL			
TYPE	WALL SUPPORT (FT)	CURB SUPPORT (FT)	FLOOR SUPPORT (FT)
2R & 2R HT (5"-16")	20'	24'	24'
2R (16")	18'	24'	24'
3R & 3Z (5"-24")	10'	24'	24'
3Z (26"-36")	10'	20'	20'

DO NOT LEAK TEST USING SMOKE BOMBS CONTAINING CHLORINES/CHLORIDES. CONSULT WITH CAPTIVEAIRE FOR PROPER LEAK TESTING METHODS.

REVISIONS		
NO.	DESCRIPTION	DATE

CAPTIVEAIRE
 Southern California Office
 3002 Dow Ave., Suite 410, Tustin, CA 92780 PHONE: (714) 857-5500 FAX: (818) 227-5975 EMAIL: info@captivaire.com

BJ's - Chandler, AZ - R2
 7151 W. Ray rd.,
 CHANDLER, AZ, 85226

DATE: 8/2/2022
 DWG.#: 5572930
 DRAWN BY: DAB
 SCALE: 3/4" = 1'-0"
 MASTER DRAWING

SHEET NO. 8

DISCLAIMER:
 The construction documentation contained on this sheet was not prepared by WD Partners, Inc. and is included within the set FOR REFERENCE ONLY.

project no. | RJSB.0373
 owner



project info
 7151 W. RAY ROAD
 CHANDLER, ARIZONA 85226
 prototype:
 PHOTO - 2020 - PL

issue dates

submission:	date
PLANNING SUBMITTAL	08/17/2022
HEALTH SUBMITTAL	08/17/2022
BUILDING PERMIT CONSTRUCTION	07/01/2022

designed by
 checked by

seal

FOR REFERENCE ONLY



THE CONSTRUCTION DOCUMENT CONTAINED ON THIS SHEET WAS NOT PREPARED BY WD PARTNERS, INC. AND IS INCLUDED WITHIN THIS SET FOR REFERENCE ONLY FOR THE PURPOSES PERTAINING TO THIS PROJECT. WD PARTNERS DID NOT REVIEW THE CONSTRUCTION DOCUMENTATION ON THIS SHEET FOR ERRORS, OMISSIONS, ACCURACY, OR CORRECTNESS AND BY INCLUDING THIS SHEET WITHIN THIS CONSTRUCTION SET, WD PARTNERS DOES NOT REPRESENT THAT SUCH INFORMATION ON THIS SHEET IS ACCURATE, COMPLETE, AND THAT THAT INFORMATION HAS NOT BEEN OMITTED OR THAT IT COMPLIES WITH ALL CURRENT APPLICABLE LOCAL CODES, RESTRICTIONS AND REQUIREMENTS.

DISCLAIMER:
The construction documentation contained on this sheet was not prepared by WD Partners, Inc. and is included within the set FOR REFERENCE ONLY.

project no. | BJSB.0373
OWNER



RESTAURANT BREWERY

project info
7151 W. RAY ROAD
CHANDLER, ARIZONA 85226

prototype:
PROTO - 2020 - PL

issue dates
submission: 08/17/2022
PLANNING SUBMITTAL: 08/17/2022
HEALTH SUBMITTAL: 08/17/2022
BUILDING PERMIT: 07/01/2022
CONSTRUCTION:

revisions: 08/17/2022

designed by:
checked by:
seal

FOR REFERENCE ONLY

sheet info

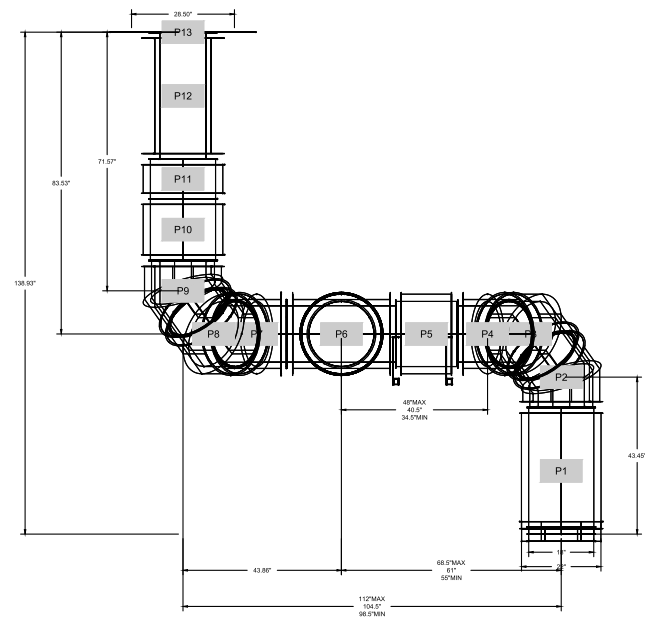
HOOD DETAILS
M4.8

PROGRESS SET 08-08-2022 NOT FOR BIDS OR CONSTRUCTION

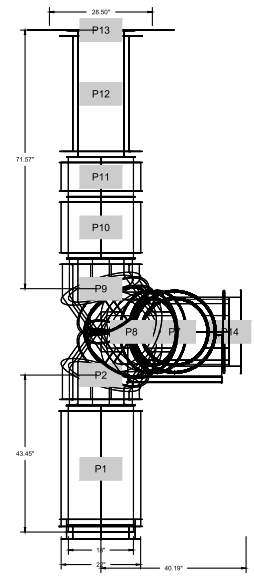
DUCTWORK #2 PARTS - JOB#5572930 DOUBLE WALL

TAG	PART #	CFM	GPM	ZON E	COVERED	SP	WEIGHT	VELOCITY	QTY	DESCRIPTION
P1	DW1835DWLT-2R-S	3375				-0.011	57.50	1909.86	1	DOUBLE WALL DUCT - 18" INNER DUCT, 35" LONG - 2 LAYERS REDUCED CLEARANCE - 22" STAINLESS STEEL OUTER SHELL.
P2	DW1845DWASY-2R-S	3375				-0.0442	28.22	1909.86	1	DOUBLE WALL DUCT - 18" INNER 45 DUCT - 2 LAYERS REDUCED CLEARANCE - 22" STAINLESS STEEL OUTER SHELL.
P3	DW1845DWASY-2R-S	3375				-0.0394	28.22	1909.86	1	DOUBLE WALL DUCT - 18" INNER 45 DUCT - 2 LAYERS REDUCED CLEARANCE - 22" STAINLESS STEEL OUTER SHELL.
P4	DW1845DWASY-2R-S	3375				-0.0394	28.22	1909.86	1	DOUBLE WALL DUCT - 18" INNER 45 DUCT - 2 LAYERS REDUCED CLEARANCE - 22" STAINLESS STEEL OUTER SHELL.
P5	DW1847DWLT-2R-S	3375				-0.015	77.58	1909.86	1	DOUBLE WALL DUCT - 18" INNER DUCT, 47" LONG - 2 LAYERS REDUCED CLEARANCE - 22" STAINLESS STEEL OUTER SHELL.
P6	DW1845DWASY-2R-S	3375				-0.068	28.22	1909.86	1	DOUBLE WALL DUCT - 18" INNER 45 DUCT - 2 LAYERS REDUCED CLEARANCE - 22" STAINLESS STEEL OUTER SHELL.
P7	DW1845DWASY-2R-S	3375				-0.0394	28.22	1909.86	1	DOUBLE WALL DUCT - 18" INNER 45 DUCT - 2 LAYERS REDUCED CLEARANCE - 22" STAINLESS STEEL OUTER SHELL.
P8	DW1845DWASY-2R-S	3375				-0.0394	28.22	1909.86	1	DOUBLE WALL DUCT - 18" INNER 45 DUCT - 2 LAYERS REDUCED CLEARANCE - 22" STAINLESS STEEL OUTER SHELL.
P9	DW1811DWLT-2R-S	3375				-0.0035	17.78	1909.86	1	DOUBLE WALL DUCT - 18" INNER DUCT, 11" LONG - 2 LAYERS REDUCED CLEARANCE - 22" STAINLESS STEEL OUTER SHELL.
P10	DW1817DWLT-2R-S	3375				-0.0055	27.78	1909.86	1	DOUBLE WALL DUCT - 18" INNER DUCT, 17" LONG - 2 LAYERS REDUCED CLEARANCE - 22" STAINLESS STEEL OUTER SHELL.
P11	ASSEMBLED WP-12	3375				-0.011	58.74	1909.86	1	DOUBLE WALL DUCT - 18" INNER DUCT, 35" LONG - 2 LAYERS REDUCED CLEARANCE - 22" STAINLESS STEEL OUTER SHELL - USED WITH TRANSITION PLATES
P12	ASSEMBLED WP-11	3375					10.58	1909.86	1	DUCT TO CURB TRANSITION, 26-1/2" CURB TO 18" DUCT, 16 GA ALUMINIZED. USED ON BDU18 & 20.
SYSTEM AT P12	DW2618TP					-1.5208	0.00			
P13	DW2226SADKIT						8.80		1	DUCT - HORIZONTAL SADDLE SUPPORT KIT, USED WITH 22" OD - INCLUDES UNI-STRUT CUT TO LENGTH, DW2226SAD, & HARDWARE BAG 4.
P14	DW2226SADKIT						8.80		1	DUCT - HORIZONTAL SADDLE SUPPORT KIT, USED WITH 22" OD - INCLUDES UNI-STRUT CUT TO LENGTH, DW2226SAD, & HARDWARE BAG 4.
	3M-2000PLUS						0.80		4	DUCT - 3M FIRE BARRIER 2000 PLUS SILICONE - USED AS SEALANT TO SEAL DUCT JOINTS.
	DW18DWCLASY-2R-S						8.70		10	DUCT - 18" DUCT - 22" DOUBLE "Y" CLAMP - 2R INSULATION & SINGLE "Y" CLAMP INCLUDED - REDUCED CLEARANCE.
TOTAL WEIGHT							515.09			

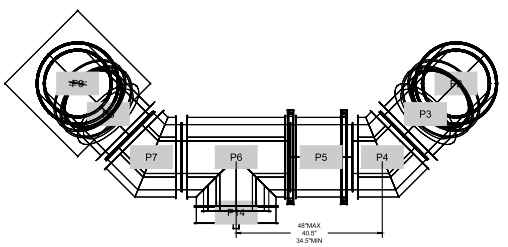
DUCTWORK #2 FRONT VIEW



DUCTWORK #2 SIDE VIEW



DUCTWORK #2 TOP VIEW



DOUBLE WALL FACTORY BUILT DUCTWORK

- ALL DUCTWORK IS REQUIRED TO BE INSTALLED WITH THE MAXIMUM SUPPORT SPACING LISTED BELOW.
- FOR A COMPLETE LIST OF APPROVED SUPPORT METHODS, SEE THE ENTIRE INSTALLATION AND OPERATION MANUAL.
- DUCTWORK SHALL SLOPE NOT LESS THAN 1/16" PER LINEAR FOOT TOWARDS THE HOOD OR AN APPROVED GREASE COLLECTION RESERVOIR.
- WHERE HORIZONTAL DUCTS EXCEED 75 FEET IN LENGTH, THE SLOPE SHALL NOT BE LESS THAN 3/16" PER LINEAR FOOT.

HORIZONTAL	
DUCT DIAMETER	SUPPORT SPACING (FT)
5"	7'
6"	7'
7"	7'
8"	7'
10"	7'
12"	7'
14"	7'
16"	7'
18"	6'
20"	6'
22"	6'
24"	6'
26"	6'
28"	6'
30"	6'
32"	6'
34"	6'
36"	6'

VERTICAL			
TYPE	WALL SUPPORT (FT)	CURB SUPPORT (FT)	FLOOR SUPPORT (FT)
2R & 2R HT (5"-16")	20'	24'	24'
2R (18")	16'	24'	24'
3R & 3Z (15"-24")	10'	24'	24'
3Z (26"-36")	10'	20'	20'

DO NOT LEAK TEST USING SMOKE BOMBS CONTAINING CHLORINES/CHLORIDES. CONSULT WITH CAPTIVEAIRE FOR PROPER LEAK TESTING METHODS.

REVISIONS

NO.	DESCRIPTION	DATE

CAPTIVEAIRE
Southern California Office
3002 Dow Ave., Suite 410, Tustin, CA 92780 PHONE: (714) 857-1500 FAX: (818) 227-8975 EMAIL: reg@captivaire.com

BJ's - Chandler, AZ - R2
7151 W. Ray rd.,
CHANDLER, AZ, 85226

DATE: 8/2/2022

DWG.#:
5572930

DRAWN BY: DAB

SCALE:
3/4" = 1'-0"

MASTER DRAWING

SHEET NO.
9

THE CONSTRUCTION DOCUMENT CONTAINED ON THIS SHEET WAS NOT PREPARED BY W.D. PARTNERS, INC. AND IS INCLUDED WITHIN THIS SET FOR REFERENCE ONLY FOR THE PURPOSES PERTAINING TO THIS PROJECT. W.D. PARTNERS DID NOT REVIEW THE CONSTRUCTION DOCUMENTATION ON THIS SHEET FOR ERRORS, OMISSIONS, ACCURACY, OR CORRECTNESS AND BY INCLUDING THIS SHEET WITHIN THIS CONSTRUCTION SET, W.D. PARTNERS DOES NOT REPRESENT THAT SUCH INFORMATION ON THIS SHEET IS ACCURATE, COMPLETE, AND THAT THAT INFORMATION HAS NOT BEEN OMITTED OR THAT IT COMPLIES WITH ALL CURRENT APPLICABLE LOCAL CODES, RESTRICTIONS AND REQUIREMENTS.

DUCTWORK #3 PARTS - JOB#5572930 DOUBLE WALL

TAG	PART #	CFM	OPM	ZON E	COVEREDBY	SP	WEIGHT	VELOCITY	QTY	DESCRIPTION
P1	DW14350WLT-2R-S	1950				-0.017	46.53	1824.11	1	DOUBLE WALL DUCT - 14" INNER DUCT, 30' LONG - 2 LAYERS REDUCED CLEARANCE - 18" STAINLESS STEEL OUTER SHELL.
P2	DW14450WASY-2R-S	1950				-0.0403	19.87	1824.11	1	DOUBLE WALL DUCT - 14" INNER 45 DUCT - 2 LAYERS REDUCED CLEARANCE - 18" STAINLESS STEEL OUTER SHELL.
P3	DW14470WJD-2R-S	1950				-0.013	93.18	1824.11	1	DOUBLE WALL ADJUSTABLE DUCT - 14" INNER DUCT - 2 LAYERS REDUCED CLEARANCE - 18" STAINLESS STEEL OUTER SHELL. MIN LENGTH = 11' / MAX LENGTH = 48.5' / ADJUSTMENT = 30.5' / ADJUSTABLE SECTION MAY NEED TO BE CUT. INCLUDES SINGLE AND DOUBLE WALL "V" CLAMPS.
P4	DW1822SADKIT						7.25		1	DUCT - HORIZONTAL SADDLE SUPPORT KIT, USED WITH 18" OD - INCLUDES UNI-STRUT CUT TO LENGTH, DW1822SAD & HANGWARE BAGS. L.
P5	DW14450WASY-2R-S	1950				-0.062	19.87	1824.11	1	DOUBLE WALL DUCT - 14" INNER 45 DUCT - 2 LAYERS REDUCED CLEARANCE - 18" STAINLESS STEEL OUTER SHELL.
P6	DW14470WJD-2R-S	1950				-0.014	93.18	1824.11	1	DOUBLE WALL ADJUSTABLE DUCT - 14" INNER DUCT - 2 LAYERS REDUCED CLEARANCE - 18" STAINLESS STEEL OUTER SHELL. MIN LENGTH = 11' / MAX LENGTH = 48.5' / ADJUSTMENT = 30.5' / ADJUSTABLE SECTION MAY NEED TO BE CUT. INCLUDES SINGLE AND DOUBLE WALL "V" CLAMPS.
P7	DW14350WLTTP-2R-S	1950				-0.017	46.06	1824.11	1	DOUBLE WALL DUCT - 14" INNER DUCT, 35' LONG - 2 LAYERS REDUCED CLEARANCE - 18" STAINLESS STEEL OUTER SHELL. USED WITH TRANSITION PLATE.
P8	DW23514TP	1950					12.00	1824.11	1	DUCT TO CURB TRANSITION, 23.50" CURB TO 14" DUCT, 16 GA ALUMINIZED. MISC. NON-STANDARD TRANSITION PLATE.
SYSTEM AT P8							-0.5543	0.00		
	3M-2000PLUS						0.80		2	DUCT - 3M FIRE BARRIER 2000 PLUS SILICONE - USED AS SEALANT TO SEAL DUCT JOINTS.
	DW1440WCLASY-2R-S						7.21		1	DUCT - 14" DUCT - 18" DOUBLE "V" CLAMP - 2R INSULATION & SINGLE "V" CLAMP INCLUDED - REDUCED CLEARANCE.
TOTAL WEIGHT							348.75			

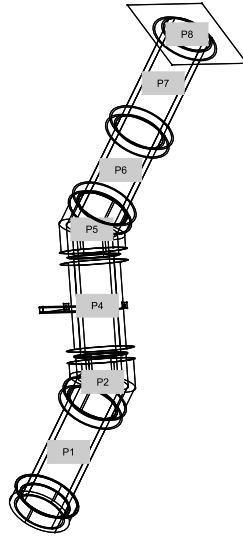
DOUBLE WALL FACTORY BUILT DUCTWORK

- ALL DUCTWORK IS REQUIRED TO BE INSTALLED WITH THE MAXIMUM SUPPORT SPACING LISTED BELOW.
- FOR A COMPLETE LIST OF APPROVED SUPPORT METHODS, SEE THE ENTIRE INSTALLATION AND OPERATION MANUAL.
- DUCTWORK SHALL SLOPE NOT LESS THAN 1/8" PER LINEAR FOOT TOWARDS THE HOOD OR AN APPROVED GREASE COLLECTION RESERVOIR.
- WHERE HORIZONTAL DUCTS EXCEED 75 FEET IN LENGTH, THE SLOPE SHALL NOT BE LESS THAN 3/16" PER LINEAR FOOT.

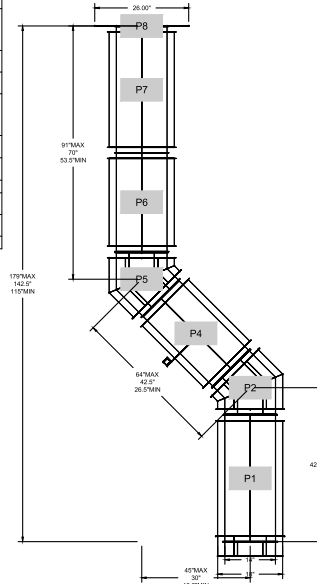
HORIZONTAL	
DUCT DIAMETER	SUPPORT SPACING (FT)
5"	7'
6"	7'
7"	7'
8"	7'
10"	7'
12"	7'
14"	7'
16"	7'
18"	5'
20"	5'
22"	5'
24"	5'
26"	5'
28"	5'
30"	5'
32"	5'
34"	5'
36"	5'

VERTICAL			
TYPE	WALL SUPPORT (FT)	CURB SUPPORT (FT)	FLOOR SUPPORT (FT)
2R & 2R HT (8'-16')	20'	24'	24'
2R (18')	18'	24'	24'
3R & 3Z (8'-24')	10'	24'	24'
3Z (28'-30')	10'	20'	20'

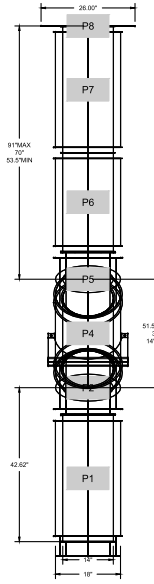
DUCTWORK #3 SE VIEW



DUCTWORK #3 FRONT VIEW

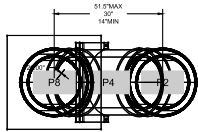


DUCTWORK #3 SIDE VIEW



DO NOT LEAK TEST USING SMOKE BOMBS CONTAINING CHLORINES/CHLORIDES. CONSULT WITH CAPTIVEAIRE FOR PROPER LEAK TESTING METHODS.

DUCTWORK #3 TOP VIEW



REVISIONS	
DESCRIPTION	DATE

CAPTIVEAIRE
Southern California Office
3002 Dow Ave., Suite 415, Torrance, CA 90503 PHONE: (714) 897-1500 FAX: (919) 227-5973 EMAIL: mg@captivaire.com

Bj's - Chandler, AZ - R2
7151 W. Ray rd.,
CHANDLER, AZ, 85226

DATE: 8/2/2022
DWG.#: 5572930

DRAWN BY: DAB
CHECKED BY: DAB
SCALE: 3/4" = 1'-0"
MASTER DRAWING

SHEET NO.
10

architect + engineer

DISCLAIMER:
The construction documentation contained on this sheet was not prepared by W.D. Partners, Inc. and is included within the set for reference only.

project no. | BJSB.00373

OWNER

Bj's RESTAURANT BREWHOUSE

progress set 08-08-2022 NOT FOR BIDS OR CONSTRUCTION

project info
7151 W. RAY ROAD
CHANDLER, ARIZONA 85226

prototype:
PROTO - 2020 - PL

issue dates

submission:	date
PLANNING SUBMITTAL	08/17/2022
HEALTH SUBMITTAL	08/17/2022
BUILDING PERMIT CONSTRUCTION	07/01/2022

revisions: 088
07/26/2022

FOR REFERENCE ONLY

sheet info
HOOD DETAILS
M4.9

THE CONSTRUCTION DOCUMENT CONTAINED ON THIS SHEET WAS NOT PREPARED BY WD PARTNERS, INC. AND IS INCLUDED WITHIN THIS SET FOR REFERENCE ONLY FOR THE PURPOSES PERTAINING TO THIS PROJECT. WD PARTNERS DID NOT REVIEW THE CONSTRUCTION DOCUMENTATION ON THIS SHEET FOR ERRORS, OMISSIONS, ACCURACY, OR CORRECTNESS AND BY INCLUDING THIS SHEET WITHIN THIS CONSTRUCTION SET, WD PARTNERS DOES NOT REPRESENT THAT SUCH INFORMATION ON THIS SHEET IS ACCURATE, COMPLETE, AND THAT THAT INFORMATION HAS NOT BEEN OMITTED OR THAT IT COMPLIES WITH ALL CURRENT APPLICABLE LOCAL CODES, RESTRICTIONS AND REQUIREMENTS.

DUCTWORK #4 PARTS - JOB#5572930 DOUBLE WALL

TAG	PART #	CFM	GPM	ZON E	COVERED BY	SP	WEIGHT	VELOCITY	QTY	DESCRIPTION
P1	DW143SDWLT-2R-S	1800				-0.015	46.53	1683.79	1	DOUBLE WALL DUCT - 14" INNER DUCT, 35" LONG - 2 LAYERS REDUCED CLEARANCE - 18" STAINLESS STEEL OUTER SHELL
P2	DW1445DWASY-2R-S	1800				-0.0351	19.87	1683.79	1	DOUBLE WALL DUCT - 14" INNER 45 DUCT - 2 LAYERS REDUCED CLEARANCE - 18" STAINLESS STEEL OUTER SHELL
P3	DW1447DWALJD-2R-S	1800				-0.011	93.18	1683.79	1	DOUBLE WALL ADJUSTABLE DUCT - 14" INNER DUCT - 2 LAYERS REDUCED CLEARANCE - 18" STAINLESS STEEL OUTER SHELL - MIN LENGTH = 11" MAX LENGTH = 48.9" ADJUSTMENT = 30.9" ADJUSTABLE SECTION MAY NEED TO BE CUT. INCLUDES SINGLE AND DOUBLE WALL "V" CLAMPS.
P4	DW1822SADKIT						7.25		1	DUCT - HORIZONTAL SADDLE SUPPORT KIT, USED WITH 18" OD - INCLUDES UNI-STRUT CUT TO LENGTH, DW1822SAD, & HARDWARE BAG 4.
P5	DW1445DWASY-2R-S	1800				-0.054	19.87	1683.79	1	DOUBLE WALL DUCT - 14" INNER 45 DUCT - 2 LAYERS REDUCED CLEARANCE - 18" STAINLESS STEEL OUTER SHELL
P6	DW1447DWALJD-2R-S	1800				-0.012	93.18	1683.79	1	DOUBLE WALL ADJUSTABLE DUCT - 14" INNER DUCT - 2 LAYERS REDUCED CLEARANCE - 18" STAINLESS STEEL OUTER SHELL - MIN LENGTH = 11" MAX LENGTH = 48.9" ADJUSTMENT = 30.9" ADJUSTABLE SECTION MAY NEED TO BE CUT. INCLUDES SINGLE AND DOUBLE WALL "V" CLAMPS.
P7	ASSEMBLED W/P8	DW143SDWLTTP-2R-S	1800			-0.015	46.06	1683.79	1	DOUBLE WALL ADJUSTABLE DUCT - 14" INNER DUCT, 35" LONG - 2 LAYERS REDUCED CLEARANCE - 18" STAINLESS STEEL OUTER SHELL - USED WITH TRANSITION PLATE.
P8	ASSEMBLED W/P7	DW23514TP	1800			12.00	1683.79	1	DUCT TO CURB TRANSITION, 23.50" CURB TO 14" DUCT, 16 GA ALUMINIZED, MISC. NON-STANDARD TRANSITION PLATE.	
SYSTEM AT P8						-0.4551	0.00			
	3M-2000PLUS						0.80		2	DUCT - 3M FIRE BARRIER 2000 PLUS SILICONE - USED AS SEALANT TO SEAL DUCT JOINTS.
	DW140WCLASY-2R-S						7.21		1	DUCT - 14" DUCT - 18" DOUBLE "V" CLAMP - 2R INSULATION & SINGLE "V" CLAMP INCLUDED - REDUCED CLEARANCE.
TOTAL WEIGHT							348.75			

DOUBLE WALL FACTORY BUILT DUCTWORK

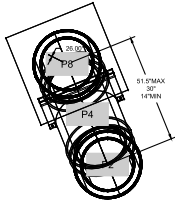
- ALL DUCTWORK IS REQUIRED TO BE INSTALLED WITH THE MAXIMUM SUPPORT SPACING LISTED BELOW.
- FOR A COMPLETE LIST OF APPROVED SUPPORT METHODS, SEE THE ENTIRE INSTALLATION AND OPERATION MANUAL.
- DUCTWORK SHALL SLOPE NOT LESS THAN 1/16" PER LINEAR FOOT TOWARDS THE HOOD OR AN APPROVED GREASE COLLECTION RESERVOIR.
- WHERE HORIZONTAL DUCTS EXCEED 75 FEET IN LENGTH, THE SLOPE SHALL NOT BE LESS THAN 3/16" PER LINEAR FOOT.

HORIZONTAL	
DUCT DIAMETER	SUPPORT SPACING (FT)
5"	7'
6"	7'
7"	7'
8"	7'
10"	7'
12"	7'
14"	7'
16"	7'
18"	8'
20"	8'
22"	8'
24"	8'
26"	8'
28"	8'
30"	8'
32"	8'
34"	8'
36"	8'

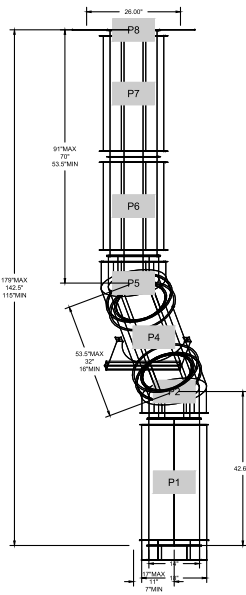
VERTICAL			
TYPE	WALL SUPPORT (FT)	CURB SUPPORT (FT)	FLOOR SUPPORT (FT)
2R & 2R HT (8"-18")	20'	24'	24'
2R (18")	18'	24'	24'
3R & 3Z (8"-24")	10'	24'	24'
3Z (26"-36")	10'	20'	20'

DO NOT LEAK TEST USING SMOKE BOMBS CONTAINING CHLORINES/CHLORIDES. CONSULT WITH CAPTIVEAIRE FOR PROPER LEAK TESTING METHODS.

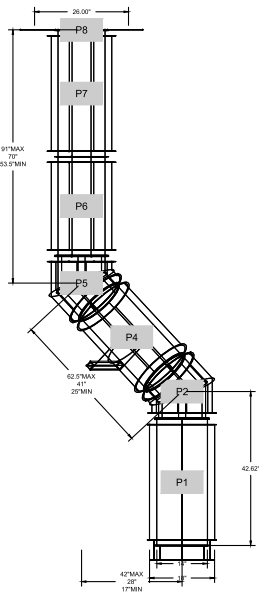
DUCTWORK #4 TOP VIEW



DUCTWORK #4 FRONT VIEW



DUCTWORK #4 SIDE VIEW



REVISIONS		
NO.	DESCRIPTION	DATE

CAPTIVEAIRE
Southern California Office
3002 Dow Ave., Suite 410, Torrance, CA 90780 PHONE: (714) 951-1500 FAX: (818) 221-5978 EMAIL: neg@captivaire.com

BJS - Chandler, AZ - R2
7151 W. Ray rd.,
CHANDLER, AZ, 85226

DATE: 6/2/2022
DWG.#: 5572930
DRAWN BY: DAB
SCALE: 3/4" = 1'-0"
MASTER DRAWING

SHEET NO. 11

architect + engineer

DISCLAIMER:
The construction documentation contained on this sheet was not prepared by WD Partners, Inc. and is included within the set FOR REFERENCE ONLY.

project no. | BJSB.0373

owner



project info
7151 W. RAY ROAD
CHANDLER, ARIZONA 85226

prototype:
PROTO - 2020 - PL

issue dates
submission: 06/01/2022
PLANNING SUBMITTAL: 06/17/2022
HEALTH SUBMITTAL: 06/17/2022
BUILDING PERMIT CONSTRUCTION: 07/01/2022

revisions: 08/07/2022

designed by:
checked by:
seal

FOR REFERENCE ONLY



PROGRESS SET 08-08-2022 NOT FOR BIDS OR CONSTRUCTION

THE CONSTRUCTION DOCUMENT CONTAINED ON THIS SHEET WAS NOT PREPARED BY WD PARTNERS, INC. AND IS INCLUDED WITHIN THIS SET FOR REFERENCE ONLY FOR THE PURPOSES PERTAINING TO THIS PROJECT. WD PARTNERS DID NOT REVIEW THE CONSTRUCTION DOCUMENTATION ON THIS SHEET FOR ERRORS, OMISSIONS, ACCURACY, OR CORRECTNESS AND BY INCLUDING THIS SHEET WITHIN THIS CONSTRUCTION SET, WD PARTNERS DOES NOT REPRESENT THAT SUCH INFORMATION ON THIS SHEET IS ACCURATE, COMPLETE, AND THAT THAT INFORMATION HAS NOT BEEN OMITTED OR THAT IT COMPLIES WITH ALL CURRENT APPLICABLE LOCAL CODES, RESTRICTIONS AND REQUIREMENTS.

DUCTWORK #5 PARTS - JOB#5572930

TAG	PART #	CFM	GPM	ZON E	COVEREDBY	SP	WEIGHT	VELOCITY	QTY	DESCRIPTION
P1	DW1435LT	1900				-0.016	16.34	1777.34	1	SINGLE WALL DUCT 14" DIAMETER, 35' LONG, FLANGE AT BOTH ENDS. STAINLESS STEEL.
P2	DW1490ASY	1900				-0.1092	10.62	1777.34	1	SINGLE WALL DUCT 90 DEGREE ELBOW, 14" DUCT, ASSEMBLY.
P3	DW1447LT	1900				-0.0221	21.79	1777.34	1	SINGLE WALL DUCT 14" DIAMETER, 47" LONG, FLANGE AT BOTH ENDS. STAINLESS STEEL.
P4	DW1447LT	1900				-0.0221	21.79	1777.34	1	SINGLE WALL DUCT 14" DIAMETER, 47" LONG, FLANGE AT BOTH ENDS. STAINLESS STEEL.
P5	DW1447LT	1900				-0.0221	21.79	1777.34	1	SINGLE WALL DUCT 14" DIAMETER, 47" LONG, FLANGE AT BOTH ENDS. STAINLESS STEEL.
P6	DW1448ADKIT	1900				-0.0138	26.62	1777.34	1	SINGLE WALL DUCT ADJUSTABLE, 14" DIAMETER, 47.5" LONG, FLANGE AT ONE END WITH A 14" ADJUSTABLE COLLAR. STAINLESS STEEL.
P7	DW145UBRASY						2.96		1	DUCT SUPPORT BRACKET KIT, 14" DUCT, USED FOR HANGING DUCT. 12 GA STEEL, CLEAR ZINC COATING. - 2 RINGS, 4 BRACKETS, & HARDWARE BAG 2.
P8	DW145UBRASY						2.96		1	DUCT SUPPORT BRACKET KIT, 14" DUCT, USED FOR HANGING DUCT. 12 GA STEEL, CLEAR ZINC COATING. - 2 RINGS, 4 BRACKETS, & HARDWARE BAG 2.
P9	DW1490ASY	1900				-0.091	10.62	1777.34	1	SINGLE WALL DUCT 90 DEGREE ELBOW, 14" DUCT, ASSEMBLY.
P10	DW1417LT	1900				-0.008	8.22	1777.34	1	SINGLE WALL DUCT 14" DIAMETER, 17" LONG, FLANGE AT BOTH ENDS. STAINLESS STEEL.
P11	DW1417LT	1900				-0.008	8.22	1777.34	1	SINGLE WALL DUCT 14" DIAMETER, 17" LONG, FLANGE AT BOTH ENDS. STAINLESS STEEL.
P12	ASSEMBLED W/P13	1900				-0.016	16.34	1777.34	1	SINGLE WALL DUCT 14" DIAMETER, 35' LONG, FLANGE AT BOTH ENDS. STAINLESS STEEL.
P13	ASSEMBLED W/P12	1900					5.82	1777.34	1	DUCT TO CURB TRANSITION, 19-1/2" CURB TO 14" DUCT, 16 GA ALUMINIZED. USED ON BDU11 & 13, DU30, 33 & 50.
SYSTEM AT P13						-0.0062	0.00			
	3M-2000PLUS						0.80		3	DUCT - 3M FIRE BARRIER 2000 PLUS SILICONE - USED AS SEALANT TO SEAL DUCT JOINTS.
	DW14CLASY						1.06		10	DUCT "V" CLAMP WITH NEW DESIGN 14 GA BRACKETS, 14" DUCT, ASSEMBLY.
TOTAL WEIGHT							167.09			

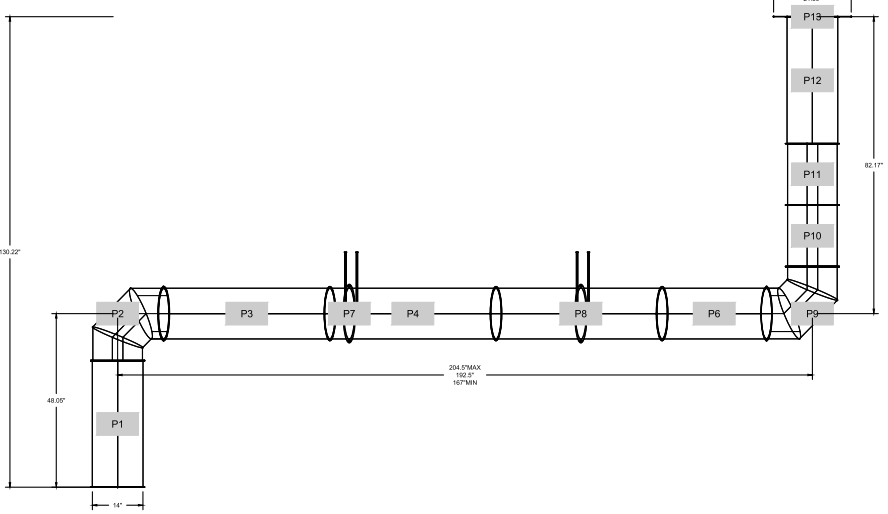
SINGLE WALL FACTORY BUILT DUCTWORK

- ALL DUCTWORK IS REQUIRED TO BE INSTALLED WITH THE MAXIMUM SUPPORT SPACING LISTED BELOW.
- FOR A COMPLETE LIST OF APPROVED SUPPORT METHODS, SEE THE INSTALLATION AND OPERATION MANUAL.
- DUCTWORK SHALL SLOPE NOT LESS THAN 1/16" PER LINEAR FOOT TOWARDS THE HOOD OR AN APPROVED GREASE COLLECTION RESERVOIR.
- WHERE HORIZONTAL DUCTS EXCEED 75 FEET IN LENGTH, THE SLOPE SHALL NOT BE LESS THAN 3/16" PER LINEAR FOOT.

DUCTWORK #5 FRONT VIEW

DUCT DIAMETER	HORIZONTAL SUPPORT (FT)	VERTICAL WALL SUPPORT (FT)	VERTICAL CURB SUPPORT (FT)
5"	10'	10'	24"
6"	10'	10'	24"
7"	10'	10'	24"
8"	10'	10'	24"
10"	10'	10'	24"
12"	10'	10'	24"
14"	10'	10'	24"
16"	10'	10'	24"
18"	10'	10'	24"
20"	10'	10'	24"
22"	10'	10'	24"
24"	10'	10'	24"
26"	10'	10'	24"
28"	10'	10'	24"
30"	10'	10'	24"
32"	10'	10'	24"
34"	10'	10'	24"
36"	10'	10'	24"

DO NOT LEAK TEST USING SMOKE BOMBS CONTAINING CHLORINES/CHLORIDES. CONSULT WITH CAPTIVEAIRE FOR PROPER LEAK TESTING METHODS.



REVISIONS

NO.	DESCRIPTION	DATE



BJ's - Chandler, AZ - R2
7151 W. Ray rd.,
CHANDLER, AZ, 85226

DATE: 8/2/2022
DWG.#: 5572930
DRAWN BY: DAB
CHECKED BY:
SCALE: 3/4" = 1'-0"
MASTER DRAWING

SHEET NO.
 12

DISCLAIMER:
 The construction documentation contained on this sheet was not prepared by WD Partners, Inc. and is included within this set for reference only.

project no. | RJSB.00373
 owner



project info
 7151 W. RAY ROAD
 CHANDLER, ARIZONA 85226

prototype:
 PROTO - 2020 - PL

issue dates
 submission: 08/17/2022
 PLANNING SUBMITTAL: 08/17/2022
 HEALTH SUBMITTAL: 08/17/2022
 BUILDING PERMIT: 07/01/2022
 CONSTRUCTION: 07/01/2022

revisions: 08/07/2022

designed by:
 checked by:
 seal

FOR REFERENCE ONLY

sheet info
HOOD DETAILS
M4.11

