

Report By:

**National TAB
1329 E. KEMPER ROAD
SUITE 4210
CINCINNATI, OH 45246**

NATIONAL

TAB

Comfort. Under control.

**Report: Gladstone Fire Station (Gladstone, MO)
Function: Test, Adjust, & Balance
Date: 09/28/2022**

**PROJECT
Gladstone Fire Station**

6569 PROSPECT AVE

KANSAS CITY, MO 64119

Client

QUALITY PLUMBING INC

1731 HOWELL ST

N KANSAS CITY, MO 64116

National TAB

Project: Gladstone Fire Station

Table Of Contents

Section	Page #
Certification	3
Equipment Calibrations	4
Abbreviations	5
GRD Layout	6
AHU/RTU	9
Energy Recovery Unit	19
Split Sys Furnace	22
FAN - Exhaust	23



CERTIFICATION



PROJECT: Gladstone Fire Station (Gladstone, MO)

The data presented in this report is a record of system measurements and final adjustments that have been obtained in accordance with the current edition of the NEBB *Procedural Standards for Testing, Adjusting, and Balancing of Environmental Systems*. Any variances from design quantities, which exceed NEBB tolerances, are noted in the Test-Adjust-Balance Report Project Summary.

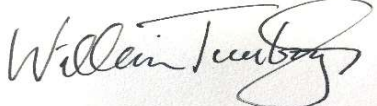
The air distribution system has been tested and balanced and final adjustments have been made in accordance with NEBB standards and the project specifications.

NEBB TAB FIRM: National TAB
REGISTRATION NO: 3768
CERTIFIED BY: Will Turnbough
DATE: 9/28/2022

The hydronic distribution system has been tested and balanced and final adjustments have been made in accordance with NEBB standards and the project specifications.

NEBB TAB FIRM: National TAB
REGISTRATION NO: 3768
CERTIFIED BY: Will Turnbough
DATE:

Submitted and Certified by:

NEBB TAB FIRM: National TAB
TAB PROFESSIONAL: Will Turnbough
SIGNATURE: 
REGISTRATION NO: 3768
CERTIFICATION EXP: 3/31/2023





National TAB

Testing, Adjusting, and Balancing Equipment

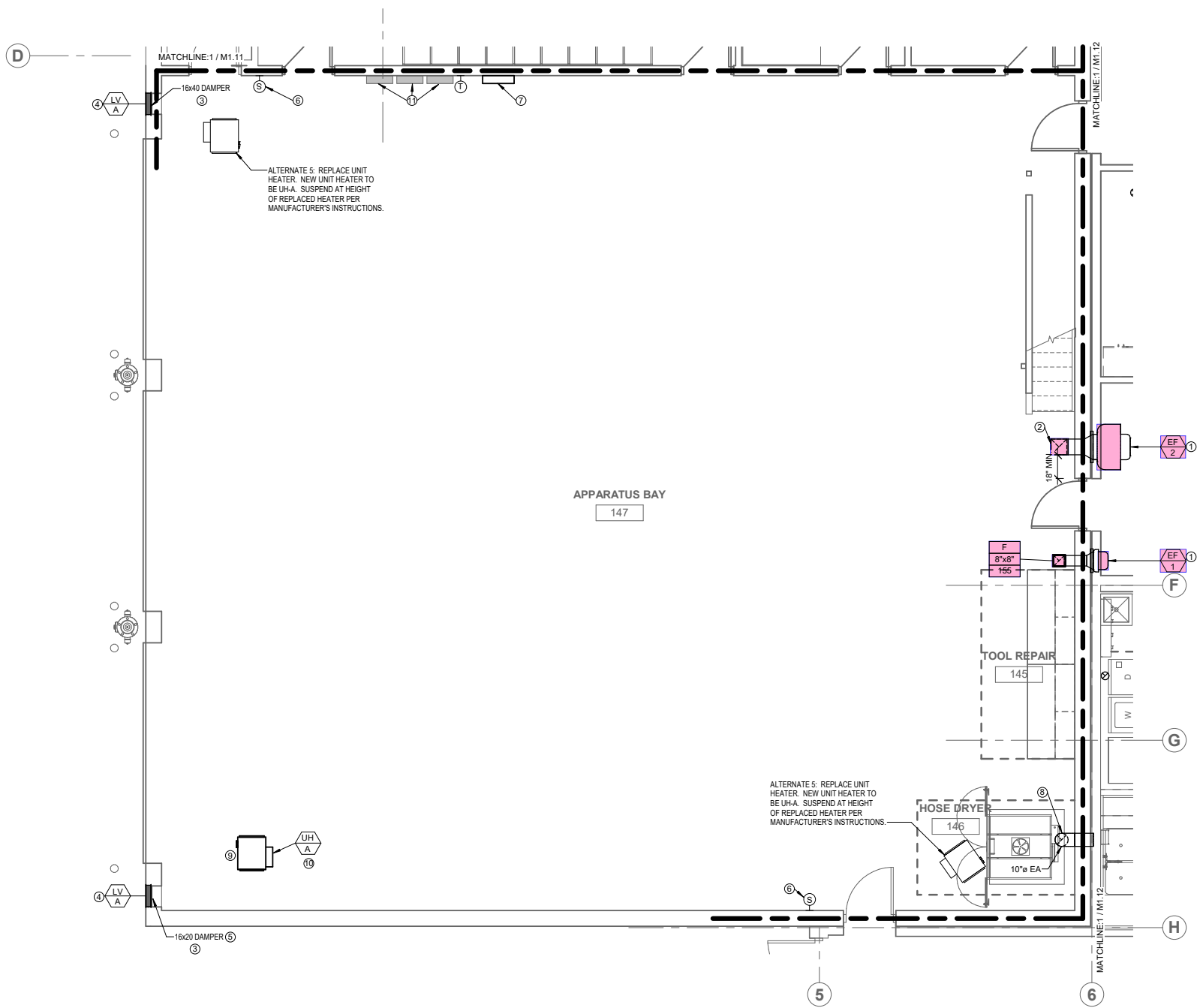


Function		Range	Minimum Accuracy	Instrument Information	Calibration Date	Date Due
AIR	AIR PRESSURE	0 in wg to 10 in wg	2% +/- 0.001 in wg	TSI EBT731 EBT732117009	8/12/2022	8/12/2023
	AIR VELOCITY INSTRUMENT	50 fpm to 3900 fpm	+/- 5 % +/- 7 fpm	Evergreen Telemetry CH-15D 1600185	5/20/2022	5/20/2023
	DIRECT HOOD READING	100 cfm to 2000 cfm	+/- 5 % +/- 7 cfm	Evergreen Telemetry CH-15D 1600185	5/20/2022	5/20/2023
TEMPERATURE	AIR METER	-20 F to 240 F	+/- .5 % 2 F	Cooper SRH77A S/N 100516003	8/12/2022	8/12/2023
	AIR PROBE	-20 F to 240 F	+/- .5 % 2 F	Cooper SRH77A S/N 100516003	8/12/2022	8/12/2023
	IMMERSION METER	-20 F to 240 F	+/- .5 % 2 F	Cooper SRH77A S/N 100516003	8/12/2022	8/12/2023
	IMMERSION PROBE	-20 F to 240 F	+/- .5 % 2 F	Cooper SRH77A S/N 100516003	8/12/2022	8/12/2023
	CONTACT METER	-20 F to 240 F	+/- .5 % 2 F	Cooper SRH77A S/N 100516003	8/12/2022	8/12/2023
	CONTACT PROBE	-20 F to 240 F	+/- .5 % 2 F	Cooper SRH77A S/N 100516003	8/12/2022	8/12/2023
HUMIDITY	HUMIDITY PROBE	10 % RH to 90 % RH	3% of reading	Cooper SRH77A S/N 100516003	8/12/2022	8/12/2023
ELECTRICAL	VOLTAGE MEASUREMENT	0 VAC to 600 VAC	2 % reading +/- 5 digits	Fluke 323 S/N 35491023WS	8/11/2022	8/11/2023
	AMPERAGE MEASUREMENT	0 Amperes to 100 Amperes	2 % reading +/- 5 digits	Fluke 323 S/N 35491023WS	8/11/2022	8/11/2023
ROTATION	ROTATION MEASUREMENT	60 rpm to 5000 rpm	2 % reading 2 rpm	Shimpo DT 207Lp S/N D1690029R	8/11/2022	8/11/2023
HYDRONIC	PRESSURE MEASUREMENT	-30 in Hg to 200 psi	±2% of reading +/- 1 psi	Hydronic Manometer - Dwyer 490W-6-HKIT S/N: 359515093207912	8/12/2022	8/12/2023
	DIFFERENTIAL PRESSURE MEASUREMENT	0 psi - 80 psi	±2% of reading +/- 1 psi	Hydronic Manometer - Dwyer 490W-6-HKIT S/N: 359515093207912	8/12/2022	8/12/2023

NEBB Fundamental Formulas

NEBB ABBREVIATIONS	
A = Area (ft ²) IP, (m ²) SI	M = Mass (lb) IP, (kg) SI
ACH = Air Changes per Hour	ma = Mixed Air
A _k = Effective Area	m = meter (metre)
AV = Average	m ³ /s = Volumetric Flow: Cubic Meters Per Second
BHP = Brake Horsepower (IP) HP	NLA = No Load Amperage
BP = Brake Power (SI) kW	NPSHA = Net Positive Suction Head Available
Btu = British Thermal Unit	oa = Outside Air
Btu/h = Btuh = BTUH = BTU/Hour	% _{oa} = % of Outside Air
ϕ = Center Distance (used in belt formula)	Ω = Ohm
°C = Degrees Celsius, °C	P = Pressure
C = Friction Loss Coefficient (For Duct Fittings)	P _a = Atmospheric Pressure
CCF = 100 Cubic Feet	P _{ab} = Absolute Pressure (Atmospheric Pressure + Gauge Pressure)
CFM = Volumetric Flow: Cubic Feet Per Minute	Pa = Pascals, Pressure SI
C _p = Specific Heat	π = 3.14
C _v = Flow Constant (IP)	PD = Sheave Pitch Diameter
ρ = Density (lb/ft ³) IP, (kg/m ³) SI	P _ϕ = Pressure at Pump Centerline
d = Diameter (in.) IP, (mm) SI	ppm = parts per million
Δ = Difference or Change (Final - Initial)	psi = Pounds Per Square Inch
d _{imp} = Impeller Diameter	psia = Pounds Per Square Inch Absolute
E = Volts	psig = Pounds Per Square Inch Gauge
Eff = Efficiency	P _{vp} = Absolute Vapor Pressure
EP = Pump Efficiency	Q (flow) = Volumetric Fluid Flow Rate: (i.e. CFM, GPM, m ³ /s, l/s, etc.)
°F = Degrees Fahrenheit, °F	Q (heat) = Heat Flow Rate (BTU/Hour) IP, (W or kW) SI
f = Friction Factor	°R = °Rankin = Degrees Rankin, °R
FLA = Full Load Amps	r = Radius (in) IP, (mm) SI
fpm = Feet per Minute (fpm)	% _{ra} = % of Return Air
ft = Foot	R = Resistance
g = Acceleration of Gravity	ra = Return Air
gal = Gallons	rad = Radians
GPM = Gallons Per Minute (GPM)	RH = Relative Humidity
h = Enthalpy (BTU/lb dry air) IP, (kJ/kg dry air) SI	RPM = Revolutions Per Minute
H = Head (in wc, ft wc, psi) IP, (Pa, kPa) SI	R _{value} = Thermal Resistance
Hg = Mercury	s = second
h _{ma} = Mixed Air Enthalpy	SHR = Sensible Heat Ratio
h _{oa} = Outside Air Enthalpy	SME = Sash Movement Effect Performance Rating (SME-XX yyy)
HP = Horsepower	SP = Static Pressure
hr = Hour	Sp Gr = Specific Gravity (for water use 1.00)
h _{ra} = Return Air Enthalpy	T = Temperature
HT = Height (in) IP, (mm) SI	T _a = Absolute Temperature (460° + T) or °R
I = Amps	T _{ma} = Mixed Air Temperature
J = Joules	T _{oa} = Outside Air Temperature
K = Kelvin, K	TP = Total Pressure
K _v = Flow constant (SI)	T _{ra} = Return Air Temperature
kg = Kilogram	TS = Tip Speed (fpm) IP, (m/s) SI
kJ = Kilojoule	U = Heat Transfer Coefficient
kPa = Kilopascal	μ = viscosity, dynamic
kW = Kilowatt = 1000 Watts	V = Velocity
l = Liter (Litre)	VP = Velocity Pressure
l/s = Volumetric Flow: Liters Per Second	W = Watt
lb = Pounds	WD = Width (in) IP, (mm) SI
lm = Lumens	wg = wc = water gauge = water column
ln = natural log	WHP = Water Horsepower (IP)
LG = Length (in) IP, (mm) SI	WP = Water Power (SI)
lx = Lux	ω = Humidity Ratio (lb or grains of water/lb of dry air) (g H ₂ O/kg dry air)





National TAB

Project: Gladstone Fire Station
System/Unit: AHU/RTU



Comfort. Under control.

Asset: RTU-1

AREA:110

Unit Data		
	Design	Actual
MFG	TRANE	TRANE
Serial Num	-	221810702D
Model Num	BELT	YHD150G3RHD4HX2
Configuration	VERTICAL	VERTICAL
Num OA Filters 1	-	1
OA Filter Size 1	-	59.5x17
Num PreFilter 1	-	4/4
PreFilter Size 1	-	20"x25"x2"/20"x20"x2"

Test Data		
	Design	Actual
SF CFM	4185	4250
SF RPM	750	584
RA CFM	3830	3927
OA CFM	355	323
RL Voltage	-	209
RL Amperage	-	6.8
OA Damper Position	-	0.0625"

Motor Data		
	Design	Actual
Motor MFG	-	MARATHON
Frame	-	56HZ
Horsepower	-	3.0
Motor Rpm	-	1740
Phase	-	3
Rated Voltage	-	208-230
Rated Amperage	-	9.4-9.2
Service Factor	-	NL

Performance Data		
	Design	Actual
MA Plenum SP	-	-0.16"
Fan Suction SP	-	-0.30"
Fan Discharge SP	-	0.39"
Total ESP	1.00	0.55"
Fan Total SP	-	0.69"

Drive Data		
	Design	Actual
Motor Sheave Size	-	4"
Motor Bore Size	-	7/8"
Motor Sheave SetPt	-	VFD
Fan Sheave Size	-	10.5"
Fan Sheave Bore	-	1-3/16"
Belt CL Distance	-	TENSIONER IN PLACE
Num of Belts	-	1
Belt Size	-	BX68

Completed By: Jacob Davidson

Notes:

National TAB

Project: Gladstone Fire Station

AHU/RTU



Comfort. Under control.

Diffuser Supply (GRD)

RTU-1/110

Asset									
Asset Name	Location	Type	Size	DESIGN CFM	AK	CFM(1)	CFM(2)	FINAL CFM	% to design
SGRD1	880	C	8"	200	1	252	282	279	139.5
SGRD2	880	C	8"	200	1	236	229	225	112.5
SGRD3	880	C	8"	200	1	182	215	212	106.0
SGRD4	880	C	8"	200	1	187	220	205	102.5
SGRD5	103	D	10"	295	1	364	319	317	107.5
SGRD6	103	D	10"	295	1	376	290	297	100.7
SGRD7	103	D	10"	295	1	307	347	274	92.9
SGRD8	103	D	10"	295	1	315	343	269	91.2
SGRD9	103	D	10"	295	1	267	295	277	93.9
SGRD10	103	D	10"	295	1	269	287	273	92.5
SGRD11	103	D	10"	295	1	284	305	281	95.3
SGRD12	103	D	10"	295	1	310	323	311	105.4
SGRD13	102	C	8"	150	1	122	140	146	97.3
SGRD14	102	C	8"	150	1	126	161	156	104.0
SGRD15	102	C	8"	150	1	106	102	141	94.0
SGRD16	102	C	8"	150	1	159	122	153	102.0
SGRD17	157	C	10"	300	1	317	311	315	105.0
SGRD18	106	D	6"	125	1	261	120	119	95.2

Completed By: Michael Gabbert on

Asset	Notes
SGRD1	No damper to adjust flow.
SGRD2	No damper to adjust flow.

National TAB

Project: Gladstone Fire Station
System/Unit: AHU/RTU



Comfort. Under control.

Asset: RTU-2

AREA:113

Unit Data		
	Design	Actual
MFG	TRANE	TRANE
Serial Num	-	221610161L
Model Num	DD	YHC067E3RHA27D6E1A10600A
Configuration	VERTICAL	VERTICAL
Num OA Filters 1	-	1 METAL MESH
OA Filter Size 1	-	15"X36"
Num PreFilter 1	-	4
PreFilter Size 1	-	16"X25"X2"

Test Data		
	Design	Actual
SF CFM	1600	1544
RA CFM	1405	1257
OA CFM	195	287
RL Voltage	-	209/209/211
RL Amperage	-	4.1/4.1/4.2
OA Damper Position	-	CLOSED HI / 0.5" LOW

Motor Data		
	Design	Actual
Motor MFG	-	GENTEQ
Frame	-	NL
Horsepower	-	1.0
Motor Rpm	-	1030
Phase	-	1
Rated Voltage	-	208/230
Rated Amperage	-	9.0
Service Factor	-	NL

Performance Data		
	Design	Actual
MA Plenum SP	-	-0.31"
Fan Suction SP	-	-0.62"
Fan Discharge SP	-	0.81"
Total ESP	1.00	1.12"
Fan Total SP	-	1.43"

Completed By: Jacob Davidson

Notes:

National TAB

Project: Gladstone Fire Station

AHU/RTU



Comfort. Under control.

Diffuser Supply (GRD)

RTU-2/113

Asset									
Asset Name	Location	Type	Size	DESIGN CFM	AK	CFM(1)	CFM(2)	FINAL CFM	% to design
SGRD1	110	D	10"	245	1	618	301	238	97.1
SGRD2	110	D	10"	245	1	389	239	262	106.9
SGRD3	109A	D	8"	145	1	110	137	144	99.3
SGRD4	109A	A	6"X6"	65	1	249	60	66	101.5
SGRD5	108	D	12"	230	1	65	108	209	90.9
SGRD6	111	D	6"	150	1	95	141	164	109.3
SGRD7	112	D	8"	185	1	97	164	160	86.5
SGRD8	113	D	8"	170	1	97	145	143	84.1
SGRD9	149	D	6"	90	1	116	163	83	92.2
SGRD10	148	D	6"	75	1	76	159	75	100.0

Diffuser Ret/Exh (GRD)

RTU-2/113

Asset								
Asset Name	Type	Size	DESIGN CFM	AK	CFM(1)	CFM(2)	FINAL CFM	% to design
EGRD1	B	10"X10"	345	1	15	161	111	32.2
EGRD2	B	8"X8"	150	1	100	102	56	37.3
EGRD3	B	8"X8"	185	1	86	81	51	27.6
EGRD4	B	8"X8"	170	1	101	110	83	48.8

Completed By: Michael Gabbert on

National TAB

Project: Gladstone Fire Station
System/Unit: AHU/RTU



Comfort. Under control.

Asset: RTU-3

AREA:120

Unit Data		
	Design	Actual
MFG	TRANE	TRANE
Serial Num	-	221610193L
Model Num	DD	YHC102F3RHA27D6E1A10600A
Configuration	VERTICAL	VERTICAL
Num OA Filters 1	-	1 METAL MESH
OA Filter Size 1	-	15"X36"
Num PreFilter 1	-	4
PreFilter Size 1	-	20"x25"x2"

Test Data		
	Design	Actual
SF CFM	2750	3009
RA CFM	2150	
OA CFM	600	578
RL Voltage	-	208/209/209
RL Amperage	-	2.7/2.7/2.8
OA Damper Position	-	1" high / 1.75" low

Motor Data		
	Design	Actual
Motor MFG	-	GENTEQ
Frame	-	NL
Horsepower	-	2.75
Motor Rpm	-	1232
Phase	-	3
Rated Voltage	-	208
Rated Amperage	-	7.3
Service Factor	-	NL

Performance Data		
	Design	Actual
MA Plenum SP	-	-0.25"
Fan Suction SP	-	-0.47"
Fan Discharge SP	-	0.42"
Total ESP	1.00	0.67"
Fan Total SP	-	0.89"

Completed By: Jacob Davidson

Notes:

National TAB

Project: Gladstone Fire Station

AHU/RTU



Comfort. Under control.

Diffuser Supply (GRD)

RTU-3/120

Asset									
Asset Name	Location	Type	Size	DESIGN CFM	AK	CFM(1)	CFM(2)	FINAL CFM	% to design
SGRD1	118	D	10"	400	1	593	413	380	95.0
SGRD2	118	D	10"	400	1	632	433	372	93.0
SGRD3	119	D	10"	400	1	694	495	436	109.0
SGRD4	119	D	10"	335	1	800	591	526	157.0
SGRD5	119	D	10"	325	1	742	552	473	145.5
SGRD6	120	D	14"X14"	290	1	651	460	262	90.3
SGRD7	120	C	10"	300	1	488	382	303	101.0
SGRD8	120	C	10"	300	1	397	306	257	85.7

Completed By: Michael Gabbert on

National TAB

Project: Gladstone Fire Station
System/Unit: AHU/RTU



Comfort. Under control.

Asset: RTU-4

AREA:144

Unit Data		
	Design	Actual
MFG	TRANE	TRANE
Serial Num	-	221610159L
Model Num	DD	YHC047E3RMA27D6E1A10600A
Configuration	VERTICAL	VERTICAL
Num OA Filters 1	-	1 METAL MESH
OA Filter Size 1	-	15"X36"
Num PreFilter 1	-	4
PreFilter Size 1	-	16"X25"X2"

Test Data		
	Design	Actual
SF CFM	1475	1454
RA CFM	1155	1146
OA CFM	320	308
RL Voltage	-	209
RL Amperage	-	0.6
OA Damper Position	-	0.5" high / 1.25" low

Motor Data		
	Design	Actual
Motor MFG	-	[1]
Frame	-	[1]
Horsepower	-	1.0
Motor Rpm	-	1026
Phase	-	1
Rated Voltage	-	208
Rated Amperage	-	7.3
Service Factor	-	NL

Performance Data		
	Design	Actual
MA Plenum SP	-	-0.13
Fan Suction SP	-	-0.31
Fan Discharge SP	-	0.33"
Total ESP	1.00	0.44"
Fan Total SP	-	0.64"

Completed By: Jacob Davidson

Notes:

National TAB

Project: Gladstone Fire Station

AHU/RTU



Comfort. Under control.

Diffuser Supply (GRD)

RTU-4/144

Asset									
Asset Name	Location	Type	Size	DESIGN CFM	AK	CFM(1)	CFM(2)	FINAL CFM	% to design
SGRD1	141	D	8"	205	1	223	298	225	109.8
SGRD2	142	A	6"X6"	85	0.12	69	102	80	94.1
SGRD3	143	A	6"X6"	55	1	56	66	51	92.7
SGRD4	140	A	6"X6"	50	1	79	73	55	110.0
SGRD5	144	A	6"X6"	70	1	90	101	77	110.0
SGRD6	138	D	6"	170	1	90	111	87	51.2
SGRD7	136	A	6"X6"	60	1	67	78	61	101.7
SGRD8	121	D	10"	245	0.43	425	308	240	98.0
SGRD9	121	D	10"	245	0.43	492	338	264	107.8
SGRD10	135	A	6"X6"	50	1	64	72	54	108.0
SGRD11	134	A	6"X6"	60	1	64	87	66	110.0
SGRD12	133	A	6"X6"	60	1	69	86	64	106.7
SGRD13	132	A	6"X6"	60	1	77	87	66	110.0
SGRD14	131	A	6"X6"	60	1	80	82	64	106.7

Diffuser Ret/Exh (GRD)

RTU-4/144

Asset								
Asset Name	Type	Size	DESIGN CFM	AK	CFM(1)	CFM(2)	FINAL CFM	% to design
EGRD1	B	10"X10"	395	1	111	111	111	28.1
EGRD2	B	6"X6"	70	1	51	51	51	72.9

Completed By: Michael Gabbert on

National TAB

Project: Gladstone Fire Station
System/Unit: AHU/RTU



Comfort. Under control.

Asset: RTU-5

AREA:132

Unit Data		
	Design	Actual
MFG	TRANE	TRANE
Serial Num	-	221610195L
Model Num	DD	YHC092F3RMA27D6E1A10600A
Configuration	VERTICAL	VERTICAL
Num OA Filters 1	-	1 METAL MESH
OA Filter Size 1	-	15"X36"
Num PreFilter 1	-	4
PreFilter Size 1	-	20"x25"x2"

Motor Data		
	Design	Actual
Motor MFG	-	UTO
Frame	-	UTO
Horsepower	-	2.75
Motor Rpm	-	1134
Phase	-	3
Rated Voltage	-	208
Rated Amperage	-	7.3
Service Factor	-	UTO

Test Data		
	Design	Actual
SF CFM	2400	2219
RA CFM	1850	1690
OA CFM	550	529
RL Voltage	-	209/209/208
RL Amperage	-	6.0/6.2/6.3
OA Damper Position	-	1" high / 3" low

Performance Data		
	Design	Actual
MA Plenum SP	-	-0.09"
Fan Suction SP	-	-0.25"
Fan Discharge SP	-	0.26"
Total ESP	1.00	0.35"
Fan Total SP	-	0.51"

Completed By: Jacob Davidson

Notes:

National TAB

Project: Gladstone Fire Station

AHU/RTU



Comfort. Under control.

Diffuser Supply (GRD)

RTU-5/132

Asset									
Asset Name	Location	Type	Size	DESIGN CFM	AK	CFM(1)	CFM(2)	FINAL CFM	% to design
SGRD1	122	D	8"	175	1	345	180	122	69.7
SGRD2	130	D	14"X14"	330	1	67	376	287	87.0
SGRD3	129	D	14"X14"	230	1	584	298	232	100.9
SGRD4	128	D	14"X14"	230	1	808	416	209	90.9
SGRD5	127	D	14"X14"	230	1	536	281	212	92.2
SGRD6	126	D	14"X14"	230	1	731	416	222	96.5
SGRD7	125	D	14"X14"	230	1	332	185	218	94.8
SGRD8	124	D	14"X14"	230	1	511	277	210	91.3
SGRD9	123	D	14"X14"	330	1	742	417	319	96.7
SGRD10	122	D	8"	185	1	443	252	188	101.6

Completed By: Michael Gabbert on

National TAB

Project: Gladstone Fire Station

System/Unit: Energy Recovery Unit



Comfort. Under control.

Asset: ERV1

AREA:117

Unit Data		
	Design	Actual
MFG	COOK	COOK
Model Num	ERV-1500	ERV-1500V
Serial Num	-	299SJ74888-00/0003101
Num Exh-Filters 1	-	1
Exh-Filter Size 1	-	20X24X2
Num Exh-Filters 2	-	1
Exh-Filter Size 2	-	12X24X2
Num OA-Filters 1	-	1/1
OA-Supply Size 1	-	20X24X2/12X24X2

Exhaust Fan Motor Data		
	Design	Actual
Motor MFG	-	MARATHON
Frame	-	56
Horsepower	0.33	1/3
Motor Rpm	-	1725
Phase	3	3
Voltage (rated)	208	208
Amperage (rated)	-	1.85
Service Factor	-	1.25

Exhaust Fan Drive Data		
	Design	Actual
Motor Sheave Size	-	3.25"
Motor Bore Size	-	5/8"
Fan Sheave Size	-	5"
Fan Sheave Bore	-	11/16"
Belt CL Distance	-	13.75"
Num of Belts	-	1
Belt Size	-	A36

OA Fan Motor Data		
	Design	Actual
Motor MFG	-	MARATHON
Frame	-	56
Horsepower	0.25	1/3
Motor Rpm	-	1725
Phase	3	3
Voltage (rated)	208	208
Amperage (rated)	-	1.85
Service Factor	-	1.25

Exhaust Fan Test Data		
	Design	Actual
Exh-ERU CFM	785	588
Exh-ERU RPM	-	952
Exh-ERU System SetPt	-	NA
RL Voltage	-	208
RL Amperage	-	1.9

Exhaust Fan Performance Data		
	Design	Actual
Exh-ERU Filter Delta SP	-	0.32"
Exh-ERU Wheel Delta SP	-	NOTES

OA Fan Test Data		
	Design	Actual
OA-ERU CFM	870	792
OA-ERU RPM	-	936
Motor Frequency	-	NA
RL Voltage	-	209
RL Amperage	-	2.0

OA Fan Performance Data		
	Design	Actual
OA-ERU Filter Delta SP	-	0.40"
OA-ERU Wheel Delta SP	-	NOTES

OA Fan Drive Data

	Design	Actual
Motor Sheave Size	-	3.25"
Motor Bore Size	-	5/8"
Fan Sheave Size	-	5"
Fan Sheave Bore	-	11/16"
Belt CL Distance	-	12.5"
Num of Belts	-	1
Belt Size	-	A36

Completed By: Jacob Davidson

Notes:

National TAB

Project: Gladstone Fire Station

Energy Recovery Unit



Comfort. Under control.

Diffuser Ret/Exh (GRD)

ERV1/117

Asset								
Asset Name	Type	Size	DESIGN CFM	AK	CFM(1)	CFM(2)	FINAL CFM	% to design
EGRD1	F	10"X10"	245	1	139			-
EGRD2	F	6"X6"	100	1	27			-
EGRD3	F	6"X6"	100	1	28			-
EGRD4	F	6"X6"	100	1	21			-
EGRD5	F	6"X6"	100	1	26			-
EGRD6	F	6"X6"	75	1	28			-
EGRD7	F	6"X6"	65	1	25			-

Completed By: Michael Gabbert on

National TAB

Project: Gladstone Fire Station

System/Unit: Split Sys Furnace



Comfort. Under control.

Asset: AC-2

AREA:

Unit Data		
	Design	Actual
MFG	TRANE	TRANE
Model Num	4TXC	4TTA7036A3
Serial Num	-	UTO
Configuration	-	HORIZONTAL
Filter Size Size 1	-	16"X24"X1

Motor Data		
	Design	Actual
Motor MFG	-	NL
Frame	-	NL
Horsepower	0.75	0.75
Motor Rpm	-	1075
Phase	3	1
Voltage	208	208-230
Amperage	-	15.0

Test Data		
	Design	Actual
SF CFM	975	989
Motor Speed SetPt	-	DEFAULT
RL Voltage	-	NOT SAFE
RL Amperage	-	NOT SAFE
RA CFM	-	989
OA CFM	-	0

Performance Data		
	Design	Actual
Suction ESP	-	-0.0196"
Discharge ESP	-	0.0278"
Total ESP	0.75	0.0474

Completed By: Jacob Davidson

Notes:

National TAB

Project: Gladstone Fire Station
System/Unit: FAN - Exhaust



Comfort. Under control.

Asset: EF-1

AREA:147

Unit Data		
	Design	Actual
MFG	NA	COOK
Model Num	DD	70ACWH70W17DEC
Serial Num	-	299SJ74888-00/0000701
Type	CENT WALL	CENT WALL

Test Data		
	Design	Actual
CFM	155	142
RL Voltage	-	NOT SAFE
RL Amperage	-	NOT SAFE
Total ESP	0.25"	UTO

Motor Data		
	Design	Actual
Motor MFG	-	COOK
Frame	-	NL
Horsepower	33W	1/6
Motor Rpm	1725	1725
Phase	1	1
Voltage (rated)	120	120
Amperage (rated)	-	2.36
Service Factor	-	NL

Completed By: Jacob Davidson

Notes:

National TAB

Project: Gladstone Fire Station
System/Unit: FAN - Exhaust



Comfort. Under control.

Asset: EF-2

AREA:147

Unit Data		
	Design	Actual
MFG	NA	COOK
Model Num	DD	150 ACW 150W13D
Serial Num	-	299SJ74888- 00/0001901
Type	CENT WALL	CENT WALL

Test Data		
	Design	Actual
CFM	2150	2300
RL Voltage	-	NOT SAFE
RL Amperage	-	NOT SAFE
Total ESP	0.25"	UTO

Motor Data		
	Design	Actual
Motor MFG	-	GENTEQ
Frame	-	NL
Horsepower	0.33	3/4
Motor Rpm	1300	1300
Phase	1	1
Voltage (rated)	120	115
Amperage (rated)	-	9.0
Service Factor	-	NL

Completed By: Jacob Davidson

Notes:

National TAB

Project: Gladstone Fire Station
System/Unit: FAN - Exhaust



Comfort. Under control.

Asset: EF-3

AREA:120

Unit Data		
	Design	Actual
MFG	NA	COOK
Model Num	CEILING	GC-146 SONEBUSTER
Serial Num	-	NL

Test Data		
	Design	Actual
CFM	75	98

Motor Data		
	Design	Actual
Motor MFG	-	QUEACE
Horsepower	34W	15W
Motor Rpm	900	900
Phase	1	1
Voltage (rated)	120	120
Amperage (rated)	-	0.40

Completed By: Jacob Davidson

Notes:

National TAB

Project: Gladstone Fire Station
System/Unit: FAN - Exhaust



Comfort. Under control.

Asset: EF-A-1

AREA:105

Unit Data		
	Design	Actual
MFG	NA	COOK
Model Num	NA	GC-146 SONEBUSTER
Serial Num	-	NL

Test Data		
	Design	Actual
CFM	75	50

Motor Data		
	Design	Actual
Motor MFG	-	QUEACE
Horsepower	34W	15W
Motor Rpm	900	1550
Phase	1	1
Voltage (rated)	120	115
Amperage (rated)	-	0.40

Completed By: Jacob Davidson

Notes: Fan is two-speed and is already set to high speed.

National TAB

Project: Gladstone Fire Station

System/Unit: FAN - Exhaust



Comfort. Under control.

Asset: EF-A-2

AREA:104

Unit Data		
	Design	Actual
MFG	COOK	COOK
Model Num	GC-146	GC-146 SONEBUSTER
Serial Num	-	NL

Test Data		
	Design	Actual
CFM	75	45

Motor Data		
	Design	Actual
Motor MFG	-	QUEACE
Horsepower	34W	15W
Motor Rpm	900	1550
Phase	1	1
Voltage (rated)	120	115
Amperage (rated)	-	0.40

Completed By: Jacob Davidson

Notes: Fan is two-speed and already set to high speed.

National TAB

Project: Gladstone Fire Station
System/Unit: FAN - Exhaust



Comfort. Under control.

Asset: EF-A-3

AREA:114

Unit Data		
	Design	Actual
MFG	COOK	COOK
Model Num	GC-146	GC-146 SONEBUSTER
Serial Num	-	NL

Test Data		
	Design	Actual
CFM	75	93

Motor Data		
	Design	Actual
Motor MFG	-	QUEACE
Horsepower	34W	15W
Motor Rpm	900	1550
Phase	1	1
Voltage (rated)	120	115
Amperage (rated)	-	0.40

Completed By: Jacob Davidson

Notes: