

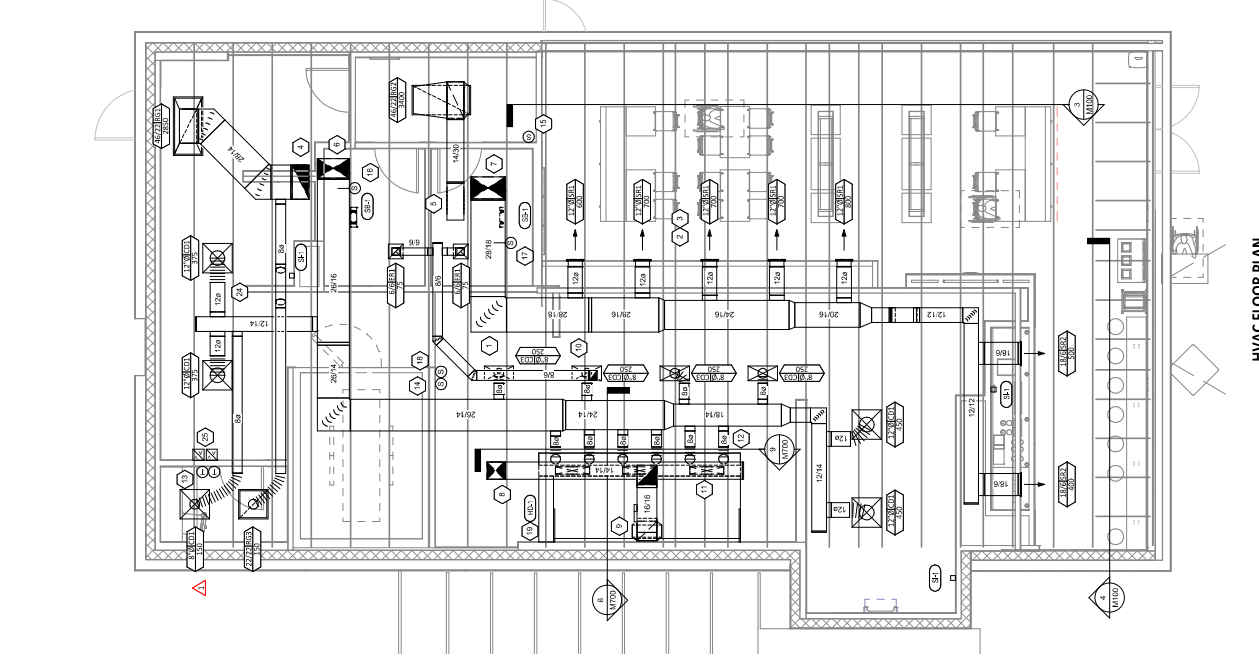
DATE REVISION	DESCRIPTION
02.15.24	PERMIT SET
07.01.24	CONSTRUCTION SET
08.15.24	CALL COMMENTS

DATE	REVISION
02.15.24	PERMIT SET
07.01.24	CONSTRUCTION SET
08.15.24	CALL COMMENTS

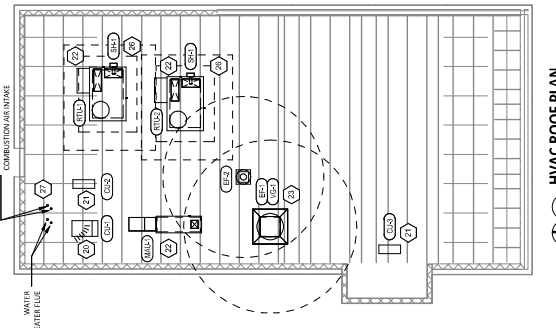
DATE	REVISION
02.15.24	PERMIT SET
07.01.24	CONSTRUCTION SET
08.15.24	CALL COMMENTS

HVAC PLAN NOTES

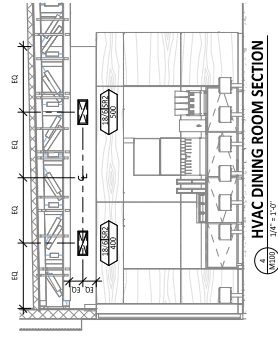
1. PROVIDE ALL WORK AS SHOWN UNLESS OTHERWISE NOTED. TYPICAL.
2. PAINT DUCTWORK UNLESS OTHERWISE NOTED. TYPICAL.
3. ADJUST SUPPLY AIR FLOW TO MATCH SUPPLY AND RETURN AIR FLOW. TYPICAL.
4. ADJUST SUPPLY AIR FLOW TO MATCH SUPPLY AND RETURN AIR FLOW. TYPICAL.
5. 3/4" DUCT UP FOR TRANSITION TO RTU-1. RETURN CONNECTION IN ROOF CURB.
6. 3/4" DUCT UP FOR TRANSITION TO RTU-2. RETURN CONNECTION IN ROOF CURB.
7. 2X6JN DUCT UP FROM BUILDING SUPPLY TO RTU-2. SUPPLY CONNECTION IN ROOF CURB. RTU-1 SHALL HAVE AN INTEGRAL SMOKE DETECTOR MOUNTED IN THE SUPPLY AIR STREAM. INTAKE SMOKE DETECTOR IN ROOF CURB. RTU-2 SHALL HAVE AN INTEGRAL SMOKE DETECTOR MOUNTED IN THE SUPPLY AIR STREAM. TRANSITION TO RTU-1. SUPPLY CONNECTION IN ROOF CURB.
8. 1/2" DUCT UP THROUGH ROOF TO RTU-1. COMPLIANT WITH NFPA 96. PROVIDE RADIUS ELBOWS WITH AN INSIDE RADIUS OF 0.5W AT ELBOWS IN GREASE DUCT.
9. 2" DUCT UP THROUGH ROOF TO RTU-2.
10. 2" DUCT DOWN TO A/C PPV DUCT CONNECTION. TRANSITION TO SUPPLY PLENUM OPENING SIZE. TYPICAL FOR 3.
11. 2" DUCT DOWN TO A/C PPV DUCT CONNECTION. TRANSITION TO SUPPLY PLENUM OPENING SIZE. TYPICAL. CAP UNUSED DUCT CONNECTIONS.
12. 2" DUCT DOWN TO A/C PPV DUCT CONNECTION. TRANSITION TO SUPPLY PLENUM OPENING SIZE. TYPICAL. CAP UNUSED DUCT CONNECTIONS.
13. INSTALL SINGLE GANGE VERTICAL BOX GROUNDING TERMINALS FURNISHED BY TEAMS FOR RTU-1 AND RTU-2 AT THIS LOCATION AT 18" AFF. COORDINATE WITH ELECTRICAL.
14. INSTALL GROUNDING ZONE SENSOR MODULE FURNISHED BY TEAMS FOR RTU-1. AT THIS LOCATION 12" AFF DIRECTLY TO WALL (NO JUNCTION BOX). COORDINATE LOCATION WITH EQUIPMENT. PROVIDE WIRING AS SHOWN IN DETAIL B6710.
15. INSTALL GROUNDING ZONE SENSOR MODULE FURNISHED BY TEAMS FOR RTU-2. AT THIS LOCATION 12" AFF DIRECTLY TO WALL (NO JUNCTION BOX). COORDINATE LOCATION WITH EQUIPMENT. PROVIDE WIRING AS SHOWN IN DETAIL B6710.
16. INSTALL GROUNDING ZONE SENSOR MODULE FURNISHED BY TEAMS FOR RTU-1. IN THE SUPPLY DUCTWORK UPSTREAM FROM THE FIRST BRANCH CONNECTION. PROVIDE WIRING AS SHOWN IN DETAIL B6710.
17. PROVIDE WIRING AS SHOWN IN DETAIL B6710.
18. INSTALL REMOTE TEMPERATURE SENSOR FOR HOOD-1. AT THIS LOCATION 72" AFF. COORDINATE LOCATION WITH EQUIPMENT. PROVIDE WIRING AS SHOWN IN DETAIL B6710.
19. INSTALL REMOTE TEMPERATURE SENSOR FOR HOOD-2. AT THIS LOCATION 72" AFF. COORDINATE LOCATION WITH EQUIPMENT. PROVIDE WIRING AS SHOWN IN DETAIL B6710.
20. INSTALL REMOTE TEMPERATURE SENSOR FOR HOOD-3. AT THIS LOCATION 72" AFF. COORDINATE LOCATION WITH EQUIPMENT. PROVIDE WIRING AS SHOWN IN DETAIL B6710.
21. INSTALL REMOTE TEMPERATURE SENSOR FOR HOOD-4. AT THIS LOCATION 72" AFF. COORDINATE LOCATION WITH EQUIPMENT. PROVIDE WIRING AS SHOWN IN DETAIL B6710.
22. INSTALL REMOTE TEMPERATURE SENSOR FOR HOOD-5. AT THIS LOCATION 72" AFF. COORDINATE LOCATION WITH EQUIPMENT. PROVIDE WIRING AS SHOWN IN DETAIL B6710.
23. INSTALL REMOTE TEMPERATURE SENSOR FOR HOOD-6. AT THIS LOCATION 72" AFF. COORDINATE LOCATION WITH EQUIPMENT. PROVIDE WIRING AS SHOWN IN DETAIL B6710.
24. INSTALL REMOTE TEMPERATURE SENSOR FOR HOOD-7. AT THIS LOCATION 72" AFF. COORDINATE LOCATION WITH EQUIPMENT. PROVIDE WIRING AS SHOWN IN DETAIL B6710.
25. PROVIDE AUDIO/VISUAL REMOTE SMOKE DETECTOR ANNUATOR WITH REMOTE KEY OPERATED RESET. WIRE A UNIT BACK TO EACH SMOKE DETECTOR. MOUNT UNIT 60" AFF. TYPICAL.
26. PROVIDE REMOTE SMOKE DETECTOR ANNUATOR WITH REMOTE KEY OPERATED RESET. WIRE A UNIT BACK TO EACH SMOKE DETECTOR. MOUNT UNIT 60" AFF. TYPICAL.
27. MAINTAIN 10" CLEARANCE BETWEEN WATER HEATER FUEL TERMINATION AND OUTSIDE AIR INTAKES. MAINTAIN 10" CLEARANCE BETWEEN WATER HEATER COMBUSTION AIR INTAKE AND EXHAUST FAN EX-1. DISCHARGE. SEE PLUMBING DRAWINGS FOR MORE INFORMATION ON WATER HEATER FUEL AND COMBUSTION AIR TERMINATIONS.



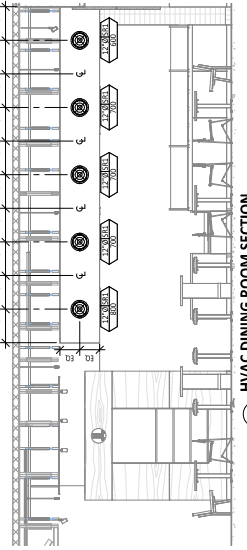
HVAC FLOOR PLAN
 1/4" = 1'-0"



HVAC ROOF PLAN
 1/8" = 1'-0"



HVAC DINING ROOM SECTION
 1/4" = 1'-0"



HVAC DINING ROOM SECTION
 1/4" = 1'-0"



REMARK SET
CONSTRUCTION SET
CALL COMMENTS

SANITIZING EQUIPMENT SCHEDULE

TAG COUNT	DESCRIPTION	FURNISH INSTALLED BY	MANUFACTURER	MODEL	REMARKS
SH-1	2 BATHROOM AIR PURIFICATION UNIT	GC	REF ENVIRONMENTAL GROUP	BRU ASSEMBLY	SEE ELECTRICAL SHEETS FOR CONNECTION INFORMATION
SH-2	2 KITCHEN ROOFTOP PURIFICATION UNIT	GC	REF ENVIRONMENTAL GROUP	RENE-HALO	SEE ELECTRICAL SHEETS FOR CONNECTION INFORMATION
SH-3	3 ICE MACHINE TREATMENT SYSTEM	GC	REF ENVIRONMENTAL GROUP	MNSR-6A	SEE PLUMBING DRAWINGS FOR INSTALLATION INFORMATION

VIROGUARD SCHEDULE

TAG QUANTITY	DESCRIPTION	DIUCT CONNECTION SIZE	FAN CAPACITY	FURNISHED BY	INSTALLED BY	BASIS FOR DESIGN
VGL-1	1 VIBRANT RATED ENCLAVOR HOOD EXHAUST FAN ROOFTOP CONTAMINANT SYSTEM	18" X 18"	100 CFM	GC	GC	ENVIRONMENTAL

GRILLS, REGISTERS, AND DIFFUSERS SCHEDULE

TAG	DESCRIPTION	FACE SIZE	MATERIAL	FINISH	MOUNTING	FURNISHED BY	INSTALLED BY	MODEL	NOTES
GD-1	PERFORATED CEILING DIFFUSER	24" X 24"	ALUMINUM	WHITE	LAY-IN CEILING	GC	GC	4330A TYPE L	PROVIDE INTEGRAL OGD
GD-2	PERFORATED CEILING DIFFUSER	24" X 12"	ALUMINUM	WHITE	LAY-IN CEILING	GC	GC	4330A TYPE L	PROVIDE INTEGRAL OGD, REMOVE 4 WAY
GR-1	PERFORATED CEILING EXHAUST	12" X 12"	ALUMINUM	WHITE	OPP CEILING	GC	GC	4330R TYPE S	PROVIDE INTEGRAL OGD
GR-2	PERFORATED CEILING RETURN	48" X 24"	ALUMINUM	WHITE	LAY-IN CEILING	GC	GC	4330R TYPE S	
GR-3	PERFORATED CEILING RETURN	48" X 24"	ALUMINUM	WHITE	OPP CEILING	GC	GC	4330R TYPE S	
GR-4	ADJUSTABLE TURBO NOZZLE	SEE NICK SIZE	ALUMINUM	WHITE	LAY-IN CEILING	GC	GC	4330R TYPE S	
SR-1	DOUBLE DEFLECTION SUPPLY REGISTER	SEE NICK SIZE	ALUMINUM	WHITE	WALL	GC	GC	4330R TYPE S	PROVIDE FACE ACCESSIBLE OGD
SR-2	DOUBLE DEFLECTION SUPPLY REGISTER	SEE NICK SIZE	ALUMINUM	WHITE	WALL	GC	GC	4330R TYPE S	PROVIDE INTEGRAL OGD

FAN SCHEDULE

TAG	DRIVE TYPE	EXHAUST FLOW (CFM)	E.S.P. (IN. W.C.)	WEIGHT (LBS)	MOTOR POWER (HP)	ELECTRICAL V/PH	FURNISHED BY	INSTALLED BY	MODEL	REMARKS
EF-1	DIRECT	1500	1.5	100	0.81 HP	208/230/3	GC	GC	4330R TYPE S	FURNISHED WITH RECONSTRUCTABLE WIND WARDER ROOF CURB DAMPER AND ROOF CURB
EF-2	DIRECT	1500	1.5	100	0.81 HP	208/230/3	GC	GC	4330R TYPE S	FURNISHED WITH DISCONNECT, VARIABLE SPEED CONTROLLER, BACKDRIFT DAMPER AND ROOF CURB

MAKEUP AIR UNIT SCHEDULE

TAG	DESCRIPTION	SUPPLY FLOW (CFM)	E.S.P. (IN. W.C.)	INPUT POWER (KWH)	OUTPUT (MBH)	HEATING CAPACITY (BTU/HOUR)	APPROXIMATE WEIGHT (LBS)	FURNISHED BY	INSTALLED BY	MODEL	REMARKS
MAU-1	MAKEUP AIR UNIT	1300	0.80	225	220	12.5-1	377 #	GC	GC	AL-12-261-15D	FURNISHED WITH DISCONNECT, ROOF CURB, SCREEN INTAKE, AND WASHABLE ALUMINUM FILTERS

CONDENSING UNIT SCHEDULE

TAG	DESCRIPTION	NOMINAL CAPACITY (TONS)	NUMBER OF COMPRESSORS	NUMBER OF CIRCUITS	REFRIGERANT TYPE	REFRIGERANT CHANGE (LBS)	WEIGHT (LBS)	ELECTRICAL M/KCP	FIA	V/PH	FURNISHED BY	INSTALLED BY	MODEL	REMARKS
CU-1	WALL MOUNTED CONDENSING UNIT	--	1	1	R-404A	11.1b, 7.4 oz	300	1.1 HP	13.4	208/230/3	GC	GC	FC300P-3	FURNISHED WITH WASH IN COOLER
CU-2	ICE DAMPER - REMOTE CONDENSER	--	0	1	R-404A	11.1b, 7.4 oz	300	1.1 HP	13.4	208/230/3	GC	GC	FC300P-3	FURNISHED WITH ICE MAKER
CU-3	ICE DAMPER - REMOTE CONDENSER	--	0	1	R-404A	11.1b, 7.4 oz	300	1.1 HP	13.4	208/230/3	GC	GC	FC300P-3	FURNISHED WITH ICE MAKER

KITCHEN HOOD SCHEDULE

TAG	DESCRIPTION	MAX COOKING TEMP. (600°F)	COOKING AIRFLOW (CFM)	OA ESP (IN. W.C.)	ESP (IN. W.C.)	SP AIRFLOW (CFM)	EXHAUST PLENUM DUCT COLLARS NO.	DUCT COLLARS NO.	DUCT COLLARS LENGTH (IN. W.C.)	DUCT COLLARS WIDTH (IN. W.C.)	DUCT COLLARS DEPT (IN. W.C.)	MAU PLENUM AIRFLOW (CFM)	MAU PLENUM DUCT COLLARS NO.	DUCT COLLARS NO.	DUCT COLLARS LENGTH (IN. W.C.)	DUCT COLLARS WIDTH (IN. W.C.)	DUCT COLLARS DEPT (IN. W.C.)	AC PLENUM AIRFLOW (CFM)	DUCT COLLARS NO.	DUCT COLLARS LENGTH (IN. W.C.)	DUCT COLLARS WIDTH (IN. W.C.)	DUCT COLLARS DEPT (IN. W.C.)	APPROXIMATE WEIGHT (LBS)	FURNISHED BY	INSTALLED BY	MODEL	REMARKS
HD-1	PERFORATED HOOD WITH WASH SUPPLY PLENUMS	600°F	2550	0.97	0.97	0.1	1	10"	24"	12" 9"	4" 3"	1300	3	3	6"	28"	28"	700	6	8"	60" A	49" A	1100	GC	GC	548R NO 2-KCSP F	WASH SUPPLY PLENUMS WITH VERTICAL END PANELS, 16" TALL HEAVY DUTY DUCT COLLAR TEMPERATURE SENSOR, 16" HEAVY DUTY PLENUM, SYSTEM DRY CONTACT, AND 4-POLE 20A CONTACTOR

ROOFTOP UNIT SCHEDULE

TAG	DESCRIPTION	NOMINAL CAPACITY (TONS)	EAER (CFM)	ESP (CFM)	OA ESP (IN. W.C.)	ESP (IN. W.C.)	SP AIRFLOW (CFM)	EXHAUST PLENUM DUCT COLLARS NO.	DUCT COLLARS NO.	DUCT COLLARS LENGTH (IN. W.C.)	DUCT COLLARS WIDTH (IN. W.C.)	DUCT COLLARS DEPT (IN. W.C.)	MAU PLENUM AIRFLOW (CFM)	MAU PLENUM DUCT COLLARS NO.	DUCT COLLARS NO.	DUCT COLLARS LENGTH (IN. W.C.)	DUCT COLLARS WIDTH (IN. W.C.)	DUCT COLLARS DEPT (IN. W.C.)	AC PLENUM AIRFLOW (CFM)	DUCT COLLARS NO.	DUCT COLLARS LENGTH (IN. W.C.)	DUCT COLLARS WIDTH (IN. W.C.)	DUCT COLLARS DEPT (IN. W.C.)	APPROXIMATE WEIGHT (LBS)	FURNISHED BY	INSTALLED BY	MODEL	REMARKS
RTU-1	KITCHEN ROOFTOP UNIT	10	12	3500	500	0.8	116	71	76	67	97	180	148	64	2	2	8-10A	25.6	1500	60" A	208/3/00	208/3/00	1100	GC	GC	486C_M12	FURNISHED WITH HINGED ACCESS PANELS, STANDARD ECONOMIZER W/ DUAL ENTHALPY CONTROLS, BAROMETRIC RELIEF, SUP. SMOKE DETECTOR W/ REMOTE RESET, ANTI-COIL OVERHEAT RESET, MERV 8 FILTERS, CORB HALL GUARD, DISCONNECT & UNIT MOUNTED AND COVERED CONVENIENCE RECEPTACLE	
RTU-2	DINING ROOM ROOFTOP UNIT	12.5	30.2	4400	1000	0.8	150	80	77	68	97	180	148	61	2	1	8-10A	19.5	1000	80" A	208/3/00	208/3/00	1100	GC	GC	486C_M14	FURNISHED WITH HINGED ACCESS PANELS, STANDARD ECONOMIZER W/ DUAL ENTHALPY CONTROLS, BAROMETRIC RELIEF, SUP. SMOKE DETECTOR W/ REMOTE RESET, ANTI-COIL OVERHEAT RESET, MERV 8 FILTERS, CORB HALL GUARD, DISCONNECT & UNIT MOUNTED AND COVERED CONVENIENCE RECEPTACLE	

AIR BALANCE SCHEDULE

Tag	Supply Flow (CFM)	Return Flow (CFM)	Exhaust Flow (CFM)	Subtotal (CFM)
EF-1	0	0	1500	1500
EF-2	0	0	1500	1500
MAU-1	1300	0	0	1300
RTU-1	3500	3500	0	7000
RTU-2	4500	3500	0	8000
Net Pressurization (CFM)	4800	7000	3000	14800

CONTROL FUNCTIONS

A. THE MAIN COOKING EXHAUST FAN AND MAKE-UP AIR UNIT SHALL BE INTRODUCED TO OPERATE TOGETHER. THIS CONTROLS CIRCUIT IS ACTIVATED BY THE COOKING HOODS. THE MAKE-UP AIR UNIT SHALL BE ACTIVATED BY THE COOKING HOODS.

B. THE TEMPERATURE IN EACH ZONE IS CONTROLLED BY SPACE TEMPERATURE SENSORS. THE TEMPERATURE SENSORS ARE LOCATED IN THE OFFICE AND DINING ROOMS. THE TEMPERATURE SENSORS IN THE OFFICE ARE OCCUPIED TIMES AND INTENTENTLY AS NEEDED TO MAINTAIN SET POINTS. THE TEMPERATURE SENSORS IN THE DINING ROOM ARE CONTINUOUSLY WHEN ENTERS UNOCCUPIED MODE ON WHEN THE HOOD SYSTEM ON AND SHALL BE CLOSED DURING UNOCCUPIED PERIODS.

C. THE MAKE-UP AIR UNIT SHALL BE CONTROLLED BY THE TEMPERATURE SENSORS IN THE OFFICE AND DINING ROOMS. THE MAKE-UP AIR UNIT SHALL BE CONTROLLED BY THE TEMPERATURE SENSORS IN THE OFFICE AND DINING ROOMS.