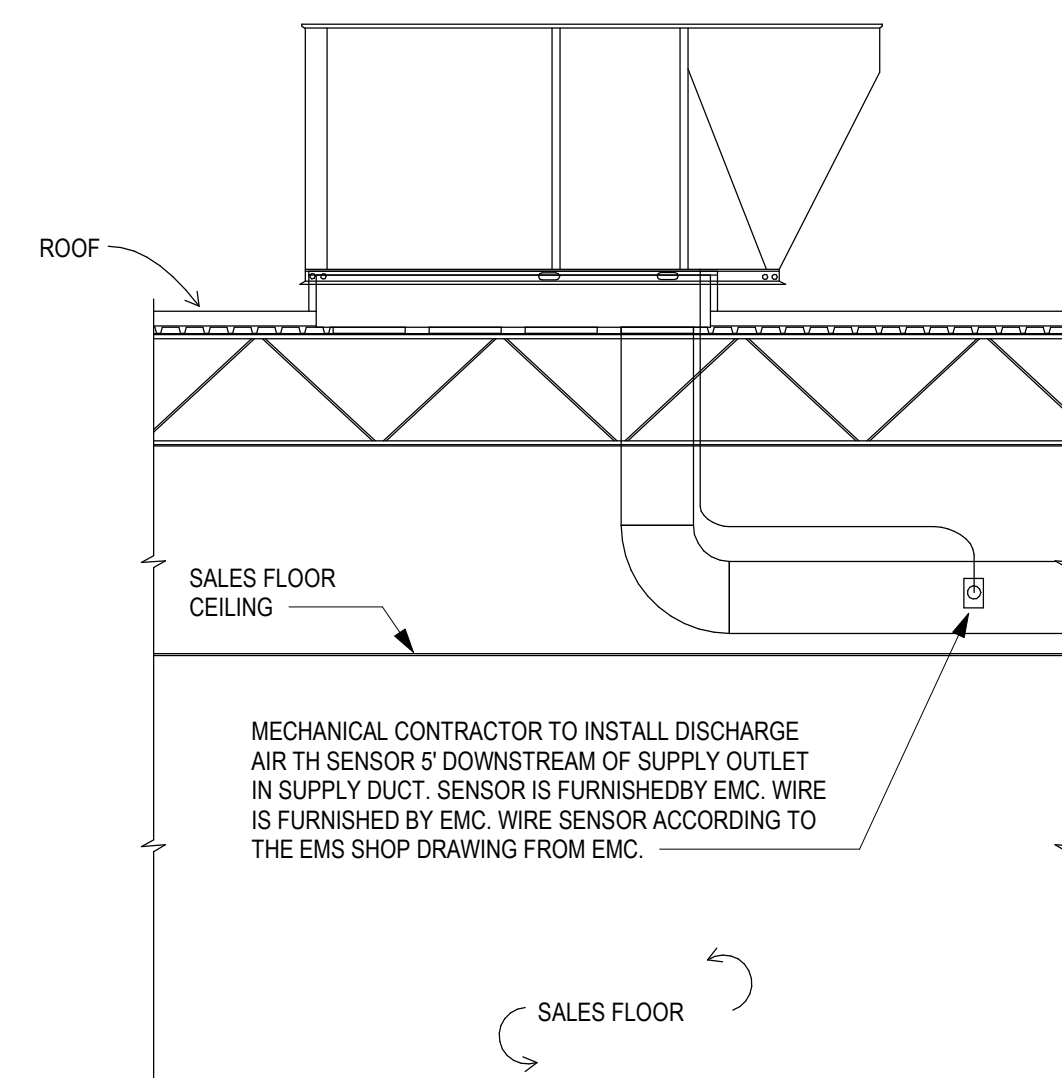


1 ROOF HVAC PLAN
M141 SCALE: 1/8" = 1'-0"

3 RTU-09 PARTIAL HVAC PLAN
M141 SCALE: 1/4" = 1'-0"



2 DISCHARGE AIR SENSOR AT MARKET RTU
M141 SCALE: NOT TO SCALE

MODEL	TONS	QUANTITY	SIZE
ZJZRZT 007	3	4	24 X 18 X 2
ZJZRZT 009	4	4	24 X 18 X 2
ZJZRZT 061	5	4	24 X 18 X 2
ZJZRZT 065	6.5	4	24 X 20 X 2
ZJZRZT 078	7.5	4	24 X 18 X 2
ZJZRZT 102	8.5	4	24 X 20 X 2
ZJZRZT 120	10	4	24 X 20 X 2
ZJZRZT 150	12.5	4	24 X 20 X 2
ZJZRZT 180	15	4	18 X 25 X 2
ZJZRZT 190	15	4	18 X 20 X 2
ZJZRZT 210	17.5	12	12 X 24 X 2
ZJZRZT 220	17.5	12	12 X 24 X 2
ZJZRZT 230	20	4	18 X 25 X 2
ZJZRZT 240	20	4	18 X 20 X 2
ZJZRZT 250	20	12	12 X 24 X 2
ZJZRZT 260	25	4	18 X 25 X 2
ZJZRZT 270	25	4	18 X 20 X 2
ZJZRZT 280	25	12	12 X 24 X 2
ZJZRZT 290	15	6	20 X 25 X 2
ZJZRZT 300	17.5	6	20 X 25 X 2
ZJZRZT 310	20	6	20 X 25 X 2
ZJZRZT 320	25	9	18 X 25 X 2
ZJZRZT 330	27.5	9	18 X 25 X 2

Unit No.	Nominal Cooling Tons (Tons)	Manufacturer	Model	Refrigeration Type	Supply										Cooling Design Conditions										Heating Design										Heating Performance										Electrical Data										Gas Pressure = 2.0 psi									
					Blower Type	SA (CFM)	Minimum OA (CFM)	ESP (IN. WC)	Fan Motor Nominal (HP)	SA Fan (RPM)	Outdoor Air D.B. (°F)	Mixed Air D.B. (°F)	Total (MBH)	Sensible (MBH)	Coil LAT D.B. (°F)	Coil W.B. (°F)	EER / SEER	Outdoor Air D.B. (°F)	Mixed Air D.B. (°F)	Fuel Type	Heating Input (MBH)	Heating Output (MBH)	LAT D.B. (°F)	Mech Thermal Eff	Voltage	MCA	Max Fuse	Operating Weight	Options																																			
RTU-01 - Food Service	6.5	York	Z407E	R410A	VFD	2380	305	0.90	1.00	889	97.3	77.0	63.3	75.6	96.2	50.0	51.1	11.9/15	6.8	60.0	NG	120	97	80.0	81%	460-3-60	20.4	25	1300	1-7, 10, 11, 12, 13, 14, 15, 16, 17, 18, 19, 20, 21, 22, 23, 24, 25, 26, 27, 28, 29, 30	EXIST																																	
RTU-02 - Office	5.0	York	Z407E	R410A	Constant	1750	260	0.90	1.00	960	97.3	77.5	63.7	76.9	42.9	54.0	51.6	12.2/14.5	6.8	58.0	NG	120	97	110.1	81%	460-3-60	12.3	15	1000	1-7, 10, 11, 12, 13, 14, 15, 16, 17, 18, 19, 20, 21, 22, 23, 24, 25, 26, 27, 28, 29, 30	EXIST																																	
RTU-03 - Grocery Pickup Storage	4.0	York	EXISTING TO REMAIN	R410A	Constant	1100	160	0.90	1.00	860	97.3	74.5	60.0	73.8	23.2	33.3	29.0	12.2/14.5	6.8	61.3	NG	60	49	110.3	82%	230-3-60	18.4	25	875	1-7, 8, 9, 10, 11, 12, 13, 14, 15, 16, 17, 18, 19, 20, 21, 22, 23, 24, 25, 26, 27, 28, 29, 30	EXIST																																	
RTU-04 - Office	3.0	York	Z407E	R410A	Constant	900	150	0.90	1.00	852	97.3	77.9	64.0	33.7	23.3	34.0	30.9	12.2/14.5	6.8	57.6	NG	60	49	108.0	82%	460-3-60	6.7	15	875	1-7, 8, 9, 10, 11, 12, 13, 14, 15, 16, 17, 18, 19, 20, 21, 22, 23, 24, 25, 26, 27, 28, 29, 30	EXIST																																	
RTU-05 - Guest Service	3.0	York	Z407E	R410A	Constant	900	150	0.90	1.00	852	97.3	77.9	64.0	33.7	23.3	34.0	30.9	12.2/14.5	6.8	57.6	NG	60	49	108.0	82%	460-3-60	6.7	15	875	1-7, 8, 9, 10, 11, 12, 13, 14, 15, 16, 17, 18, 19, 20, 21, 22, 23, 24, 25, 26, 27, 28, 29, 30	EXIST																																	
RTU-06 - Sales	12.5	York	EXISTING TO REMAIN	R410A	VFD	4000	0	1.00	3.00	1270	91.6	74.0	61.1	122.3	101.3	50.6	49.9	12/14.6	6.8	68.0	NG	160	144	101.3	80%	460-3-60	24.3	30	1900	1-7, 10, 11, 12, 13, 14, 15, 16, 17, 18, 19, 20, 21, 22, 23, 24, 25, 26, 27, 28, 29, 30	EXIST																																	
RTU-07 - Sales	15.0	York	Z4120	R410A	VFD	4000	0	1.00	3.00	990	97.3	74.0	61.1	122.3	101.3	50.6	49.9	12/14.6	6.8	68.0	NG	200	178.2	101.0	81%	460-3-60	40	60	2300	1-7, 10, 11, 12, 13, 14, 15, 16, 17, 18, 19, 20, 21, 22, 23, 24, 25, 26, 27, 28, 29, 30	EXIST																																	
RTU-08 - Sales/Market	15.0	York	Z4120	R410A	VFD	4000	0	1.00	3.00	1270	91.6	74.0	61.1	122.3	101.3	50.6	49.9	12/14.6	6.8	68.0	NG	160	144	101.3	80%	460-3-60	24.3	30	1325	1-7, 10, 11, 12, 13, 14, 15, 16, 17, 18, 19, 20, 21, 22, 23, 24, 25, 26, 27, 28, 29, 30	EXIST																																	
RTU-09 - Sales	10.0	York	Z4120	R410A	VFD	4000	0	1.00	3.00	1270	91.6	74.0	61.1	122.3	101.3	50.6	49.9	12/14.6	6.8	68.0	NG	160	144	101.3	80%	460-3-60	24.3	30	1325	1-7, 10, 11, 12, 13, 14, 15, 16, 17, 18, 19, 20, 21, 22, 23, 24, 25, 26, 27, 28, 29, 30	EXIST																																	
RTU-10 - Sales	10.0	York	Z4120	R410A	VFD	4000	0	1.00	3.00	1270	91.6	74.0	61.1	122.3	101.3	50.6	49.9	12/14.6	6.8	68.0	NG	160	144	101.3	80%	460-3-60	24.3	30	1325	1-7, 10, 11, 12, 13, 14, 15, 16, 17, 18, 19, 20, 21, 22, 23, 24, 25, 26, 27, 28, 29, 30	EXIST																																	
RTU-11 - Sales	10.0	York	Z4120	R410A	VFD	4000	0	1.00	3.00	1270	91.6	74.0	61.1	122.3	101.3	50.6	49.9	12/14.6	6.8	68.0	NG	160	144	101.3	80%	460-3-60	24.3	30	1325	1-7, 10, 11, 12, 13, 14, 15, 16, 17, 18, 19, 20, 21, 22, 23, 24, 25, 26, 27, 28, 29, 30	EXIST																																	
RTU-12 - Sales	10.0	York	Z4120	R410A	VFD	4000	0	1.00	3.00	1270	91.6	74.0	61.1	122.3	101.3	50.6	49.9	12/14.6	6.8	68.0	NG	160	144	101.3	80%	460-3-60	24.3	30	1325	1-7, 10, 11, 12, 13, 14, 15, 16, 17, 18, 19, 20, 21, 22, 23, 24, 25, 26, 27, 28, 29, 30	EXIST																																	
RTU-13 - Sales	10.0	York	Z4120	R410A	VFD	4000	0	1.00	3.00	1270	91.6	74.0	61.1	122.3	101.3	50.6	49.9	12/14.6	6.8	68.0	NG	160	144	101.3	80%	460-3-60	24.3	30	1325	1-7, 10, 11, 12, 13, 14, 15, 16, 17, 18, 19, 20, 21, 22, 23, 24, 25, 26, 27, 28, 29, 30	EXIST																																	
RTU-14 - Sales	10.0	York	EXISTING TO REMAIN	R410A	VFD	4000	0	1.00	3.00	1270	91.6	74.0	61.1	122.3	101.3	50.6	49.9	12/14.6	6.8	68.0	NG	160	144	101.3	80%	460-3-60	24.3	30	1325	1-7, 10, 11, 12, 13, 14, 15, 16, 17, 18, 19, 20, 21, 22, 23, 24, 25, 26, 27, 28, 29, 30	EXIST																																	
RTU-15 - Sales	10.0	York	Z4120	R410A	VFD	4000	0	1.00	3.00	1270	91.6	74.0	61.1	122.3	101.3	50.6	49.9	12/14.6	6.8	68.0	NG	160	144	101.3	80%	460-3-60	24.3	30	1325	1-7, 10, 11, 12, 13, 14, 15, 16, 17, 18, 19, 20, 21, 22, 23, 24, 25, 26, 27, 28, 29, 30	EXIST																																	
RTU-16 - Sales	10.0	York	Z4120	R410A	VFD	4000	0	1.00	3.00	1270	91.6	74.0	61.1	122.3	101.3	50.6	49.9	12/14.6	6.8	68.0	NG	160	144	101.3	80%	460-3-60	24.3	30	1325	1-7, 10, 11, 12, 13, 14, 15, 16, 17, 18, 19, 20, 21, 22, 23, 24, 25, 26, 27, 28, 29, 30	EXIST																																	
RTU-17 - Sales	10.0	York	Z4120	R410A	VFD	4000	0	1.00	3.00	1270	91.6	74.0	61.1	122.3	101.3	50.6	49.9	12/14.6	6.8	68.0	NG	160	144	101.3	80%	460-3-60	24.3	30	1325	1-7, 10, 11, 12, 13, 14, 15, 16, 17, 18, 19, 20, 21, 22, 23, 24, 25, 26, 27, 28, 29, 30	EXIST																																	
RTU-18 - Sales	10.0	York	Z4120	R410A	VFD	4000	0	1.00	3.00	1270	91.6	74.0	61.1	122.3	101.3	50.6	49.9	12/14.6	6.8	68.0	NG	160	144	101.3	80%	460-3-60	24.3	30	1325	1-7, 10, 11, 12, 13, 14, 15, 16, 17, 18, 19, 20, 21, 22, 23, 24, 25, 26, 27, 28, 29, 30	EXIST																																	
RTU-19 - Sales	10.0	York	Z4120	R410A	VFD	4000	0	1.00	3.00	1270	91.6	74.0	61.1	122.3	101.3	50.6	49.9	12/14.6	6.8	68.0	NG	160	144	101.3	80%	460-3-60	24.3	30	1325	1-7, 10, 11, 12, 13, 14, 15, 16, 17, 18, 19, 20, 21, 22, 23, 24, 25, 26, 27, 28, 29, 30	EXIST																																	
RTU-20 - Pharmacy	3.0	York	Z407E	R410A	Constant	925	100	0.90	1.00	824	97.3	78.5	63.0	33.8	23.2	33.3	49.9	12.2/14.5	6.8	61.3	NG	60	49	110.3	82%	230-3-60	18.4	25	875	1-7, 8, 9, 10, 11, 12, 13, 14, 15, 16, 17, 18, 19, 20, 21, 22, 23, 24, 25, 26, 27, 28, 29, 30	EXIST																																	
RTU-21 - New Offices	3.0	York	EXISTING TO REMAIN	R410A	Constant	925	100	0.90	1.00	824	97.3	78.5	63.0	33.8	23.2	33.3	49.9	12.2/14.5	6.8	61.3	NG	60	49	110.3	82%	230-3-60	18.4	25	875	1-7, 8, 9, 10, 11, 12, 13, 14, 15, 16, 17, 18, 19, 20, 21, 22, 23, 24, 25, 26, 27, 28, 29, 30	EXIST																																	
RTU-22 - Control Room	3.0	York	Z407E	R410A	VFD	1200	0	0.90	1.00	800	91.6	74.0	61.1	37.8	27.6	33.7	49.6	13.0/17	-	-	NG	-	-	-	-	460-3-60	12.4	15	997	1-7, 8, 9, 10, 11, 12, 13, 14, 15, 16, 17, 18, 19, 20, 21, 22, 23, 24, 25, 26, 27, 28, 29, 30	EXIST																																	

CONTRACTOR SHALL INSTALL ACCESSORIES SHIPPED LOOSE. REFER TO SHOP DRAWINGS FOR FIELD INSTALLED ITEMS ON EACH ROOFTOP UNIT. CONTRACTOR TO LABEL IN UNITS WITH 6" HIGH WEATHER RESISTANT LETTING IDENTIFYING RTU NUMBER AND NOMINAL TONNAGE.

- KEYNOTES:
1. INSTALL OWNER-FURNISHED ADAPTER CURB ON (E) RTU CURB. INSTALL OWNER-FURNISHED ROOFTOP UNIT ON ADAPTER CURB.
 2. EXTEND (E) GAS PIPING AND CONNECT TO ROOFTOP UNIT.
 3. INSTALL CURB CAP.
 4. VERIFY IF THERE ARE (E) DUCT SMOKE DETECTORS. IF THERE ARE NO DUCT SMOKE DETECTORS, INSTALL DUCT MOUNTED SMOKE DETECTOR IN THE RETURN DUCT (INSIDE THE STORE). SEE ELECTRICAL & RESPONSIBILITY MATRIX.
 5. NOT USED.
 6. NOT USED.
 7. NOT USED.
 8. NOT USED.
 9. INSTALL (N) OWNER-FURNISHED ROOFTOP UNIT ON (N) CURB.



Date	No.	Description
08/12/2022		2023 RTU EOL REPLACEMENT

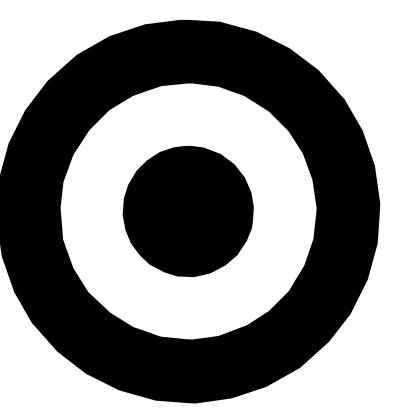


DATE: 08/12/2022 EXP: 12/31/22

TARGET
KANSAS CITY NORTH, MO
8420 N MADISON AVE, KANSAS CITY, MO 64155

Project Number: **T-1177**
Config: RR
Drawn By: **DJ**
Checked By: **MDW**

MECHANICAL ROOF PLAN
M141
9/12/2022 10:52:18 AM



TARGET
1000 NICOLLET MALL
MINNEAPOLIS, MN 55403



9100 49th Avenue N.
MINNEAPOLIS, MN 55428
Tel: (763) 367-7600
Fax: (763) 367-7601
Nelson-Rudie & Associates, Inc.
Structural - Mechanical - Electrical
Consulting Engineers

DEMOLITION GENERAL NOTES:

- A. ALL EXISTING DUCTWORK AND PIPING INDICATED ON PLAN WAS TAKEN FROM EXISTING MECHANICAL PLANS AND/OR LIMITED FIELD OBSERVATION. THE CONTRACTOR SHALL VERIFY LOCATION OF ALL EXISTING SYSTEMS PRIOR TO CONSTRUCTION AND SHALL NOTIFY THE ENGINEER OF ANY POTENTIAL CONFLICTS.
- B. CONTRACTOR SHALL HAVE A THOROUGH KNOWLEDGE OF ALL DRAWINGS, SPECIFICATIONS AND EXISTING CONDITIONS PRIOR TO BID. FAILURE TO ACQUIRE SUCH KNOWLEDGE WILL NOT RELIEVE THE RESPONSIBILITY OF THIS CONTRACTOR FOR PERFORMING THE WORK PROPERLY. NO ADDITIONAL COMPENSATION SHALL BE ALLOWED DUE TO THE CONTRACTORS FAILURE TO BECOME FAMILIAR WITH EXISTING CONDITIONS.
- C. FIELD VERIFY LOCATIONS AND QUANTITY OF ALL EXISTING EQUIPMENT, FIXTURES AND PIPING NECESSARY TO COMPLETE SCOPE OF WORK.
- D. INDICATED TO BE REMOVED - ALL REMOVED EQUIPMENT TO BE DISPOSED OF BY CONTRACTOR UNLESS NOTED AS RELOCATED/RETAINED IN DEMOLITION PLANS AND/OR KEYNOTES.
- E. INDICATES EXISTING CONDITIONS. CONTRACTOR SHALL VERIFY ALL EXISTING CONDITIONS.
- F. ARRANGE ALL REQUIRED WORK TO KEEP DISRUPTIONS TO STORE OPERATIONS TO A MINIMUM. COORDINATE ANY DISRUPTIONS WITH CONSTRUCTION MANAGER AND STORE MANAGER.
- G. SUBMIT (2) COPIES OF MARKED-UP AS-BUILT UPDATES. ONE COPY TO BE RETAINED AT THE STORE. RETURN SECOND COPY TO BE FORWARDED TO THE PROJECT CONSTRUCTION MANAGER.
- H. CONTRACTOR SHALL COORDINATE ALL PHASES OF DEMOLITION.
- I. RECLAIM ALC CONTROL MODULES AND SHIP TO TARGET. PRE-AND SHIPPING LABELS WILL BE PROVIDED. CONTACT eric.hansen@target.com (612) 696-8878
- J. REFER TO SPECIFICATION SECTION 01 7419 'EQUIPMENT RECYCLING FOR THIRD PARTY RECYCLING COORDINATION.
- K. RECLAIM EXTERNAL VFD'S LESS THAN 5 YEARS OLD AND SHIP TO EMC. CONTACT gwe@emccontrols.com (888) 822-3550 EXT. 115

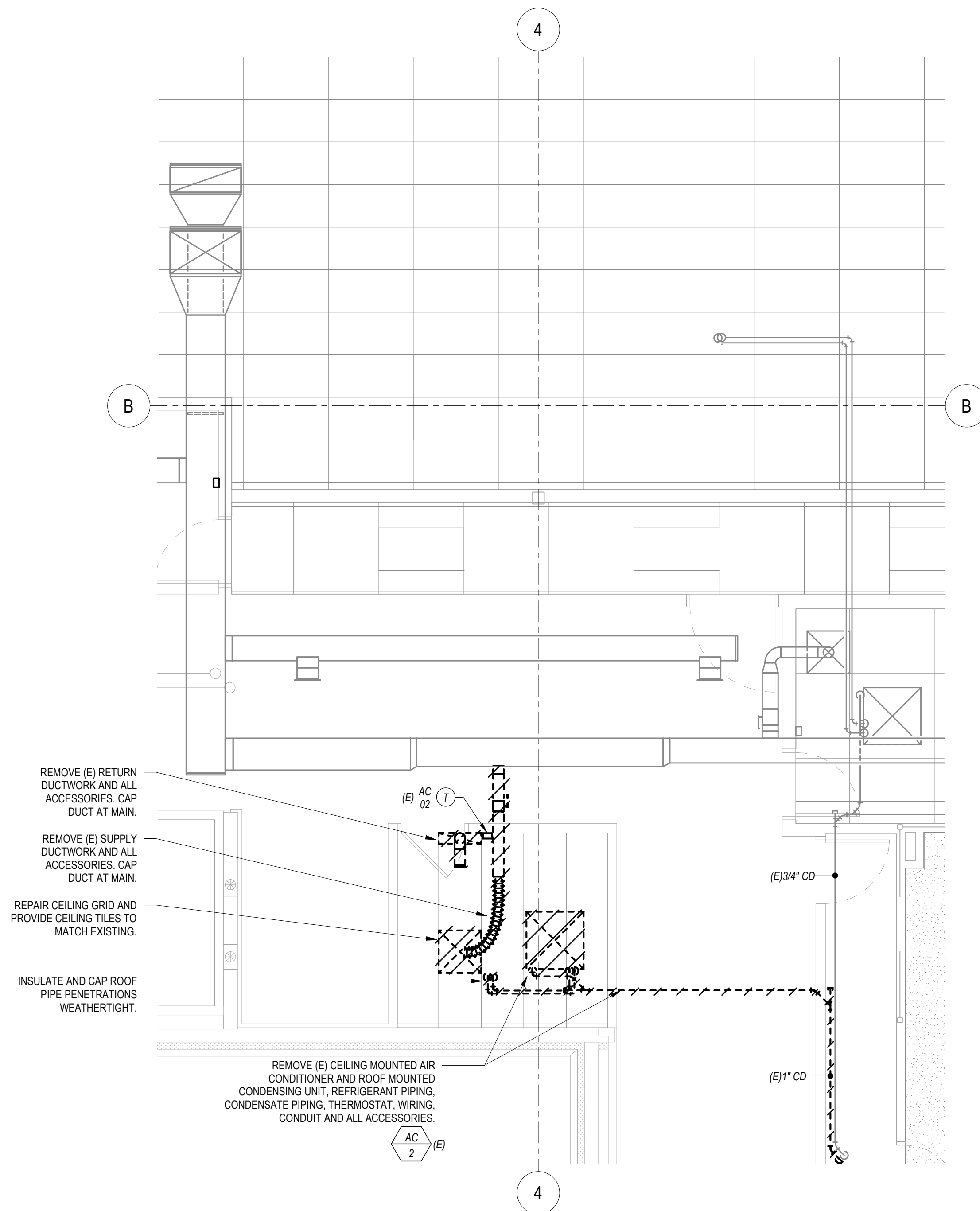
FLEXIBLE DUCTWORK INSTALLATION REQUIREMENTS:

- A. INSTALL FLEXIBLE DUCT ACCORDING TO LATEST EDITION OF SMACNA AND CURRENT STATE AND LOCAL CODES.
- B. HANG FROM ROOF JOISTS OR REST ON LAY-IN CEILING GRID BETWEEN LIGHT FIXTURES. PROVIDE SHEET METAL PLENUM ON HORIZONTAL FLEX DUCT CONNECTIONS.
- C. SUPPLY DIFFUSERS TO BE LOCATED IN FRONT OF SERVERS. DO NOT LOCATE DIFFUSERS DIRECTLY OVER EQUIPMENT PACKS.

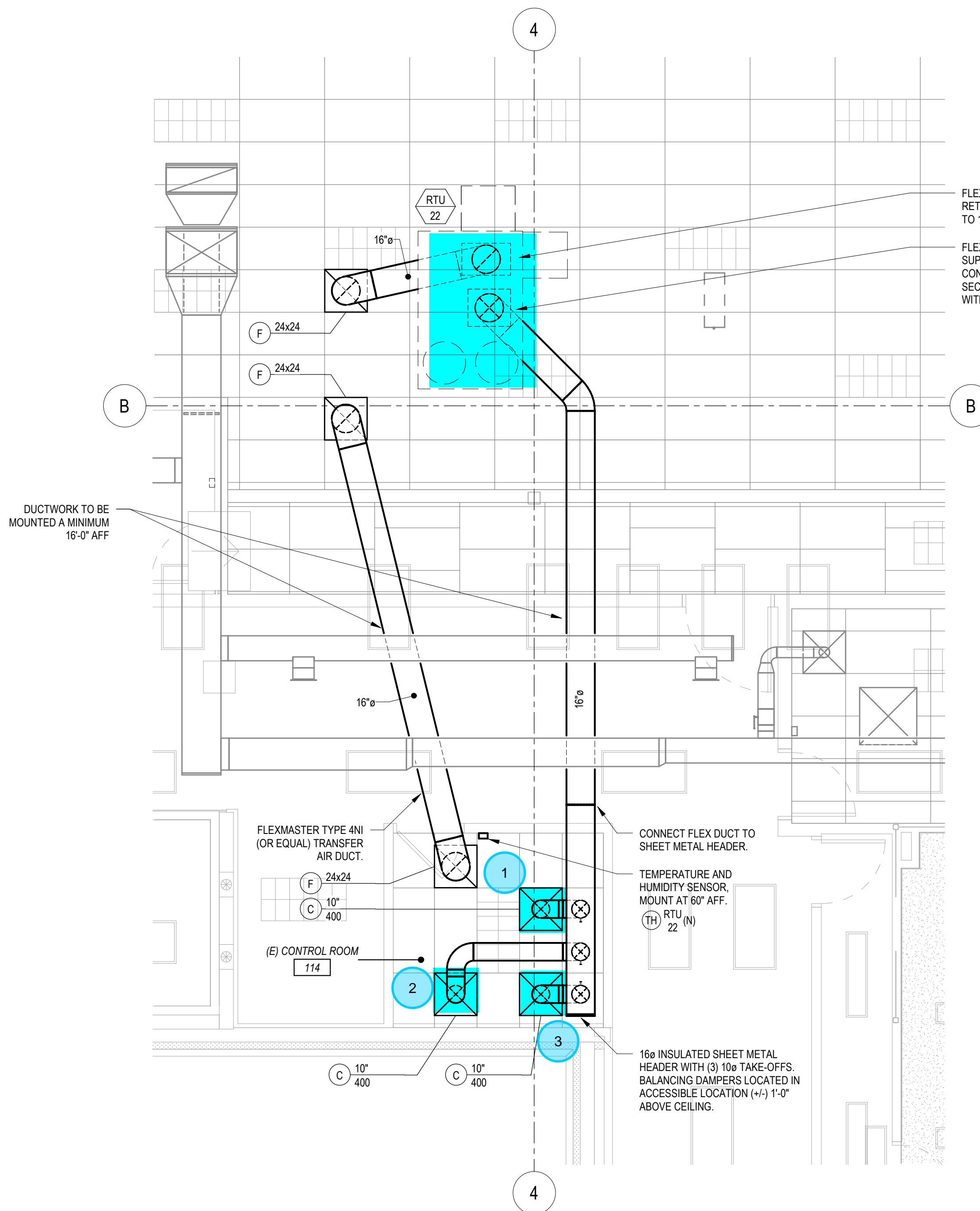
ELECTRICAL GENERAL NOTES:

- A. NEW UNIT IS EQUIPPED WITH FACTORY INSTALLED DISCONNECT SWITCH.
- B. EACH UNIT IS FURNISHED WITH FACTORY INSTALLED GFCI RECEPTACLE.

Date	No.	Description
08/12/2022		2023 RTU EOL REPLACEMENT

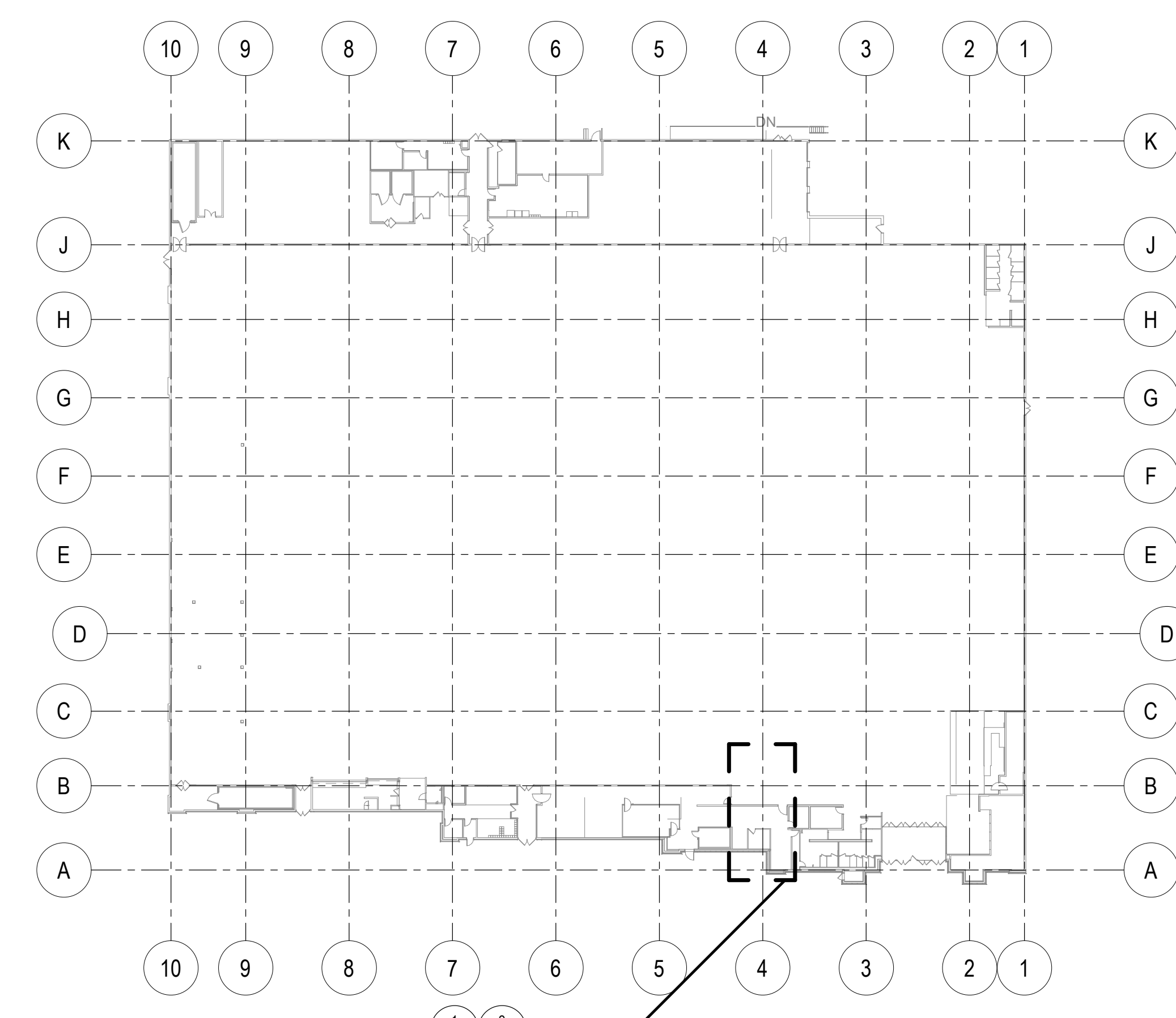


1 CONTROL ROOM HVAC DEMOLITION PLAN
SCALE: 1/4" = 1'-0"



2 CONTROL ROOM HVAC PLAN
SCALE: 1/4" = 1'-0"

EOL GRILLES, REGISTERS & DIFFUSERS SCHEDULE - CONTRACTOR FURNISHED									
TYPE	SERVICE	MAKE	MODEL	VOLUME DAMPER	FRAME	FINISH	MATERIAL	REMARKS	
F	RETURN/TRANSFER	TUTTLE & BAILEY	CRE30-SF-Q2-WH	---	LAY-IN	WHITE ENAMEL	ALUMINUM	SEE PLAN FOR FACE SIZE: 12" X 12" X 12" EGGRATE GRID	
C	CEILING DIFFUSER	TUTTLE & BAILEY	S120-LT-WH	---	LAY-IN	WHITE ENAMEL	STEEL	24"x24" MODULAR FULL-FACE DIFFUSER WITH ROUND NECK	



KEYPLAN



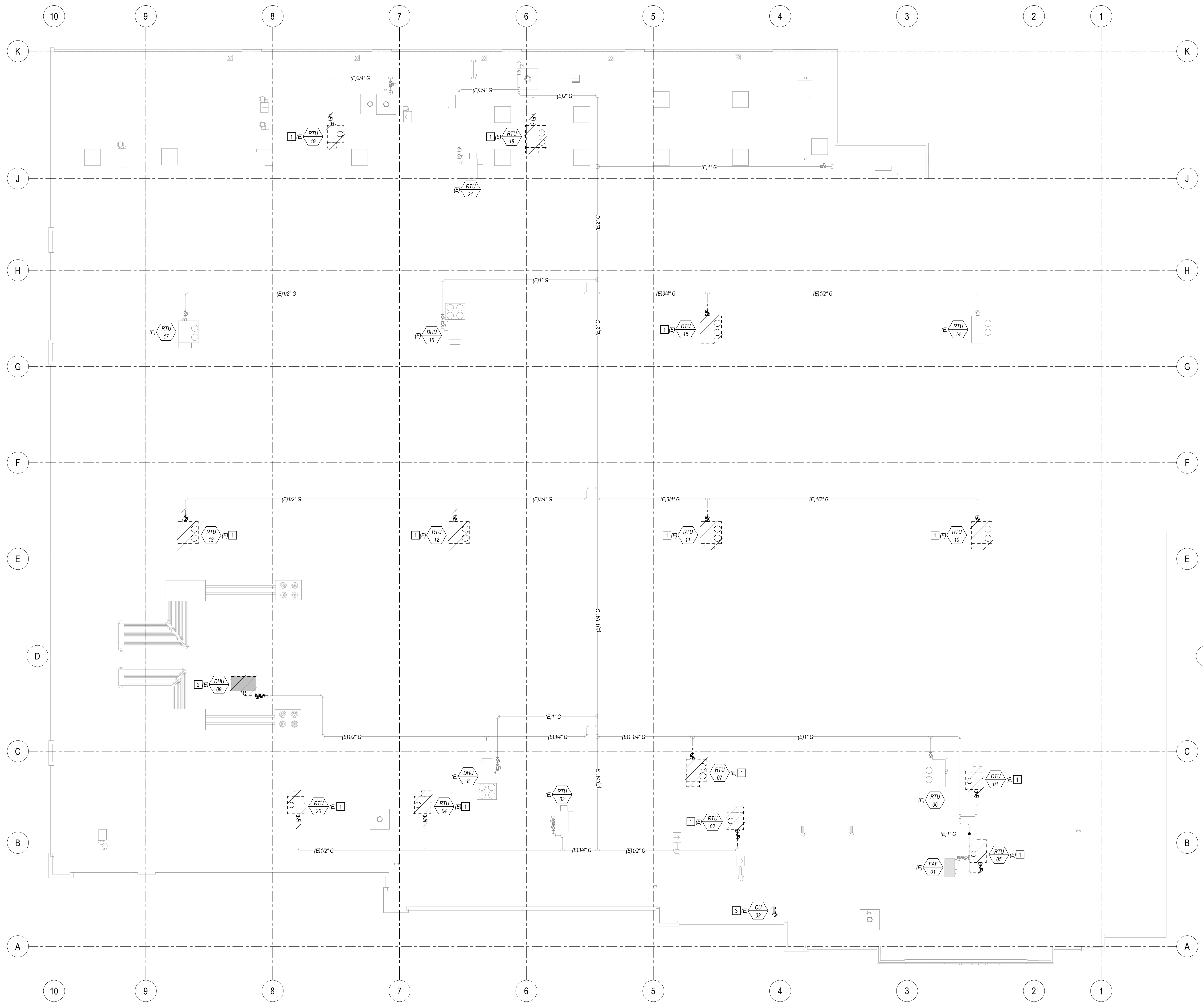
DATE: 08/12/2022 EXP: 12/31/22

TARGET
KANSAS CITY NORTH, MO
8420 N MADISON AVE, KANSAS CITY, MO 64155

Project Number **T-1177**
Config: RR
Drawn By **DJ**
Checked By **MDW**

**CONTROL ROOM
RTU RETROFIT
PLANS**

M112



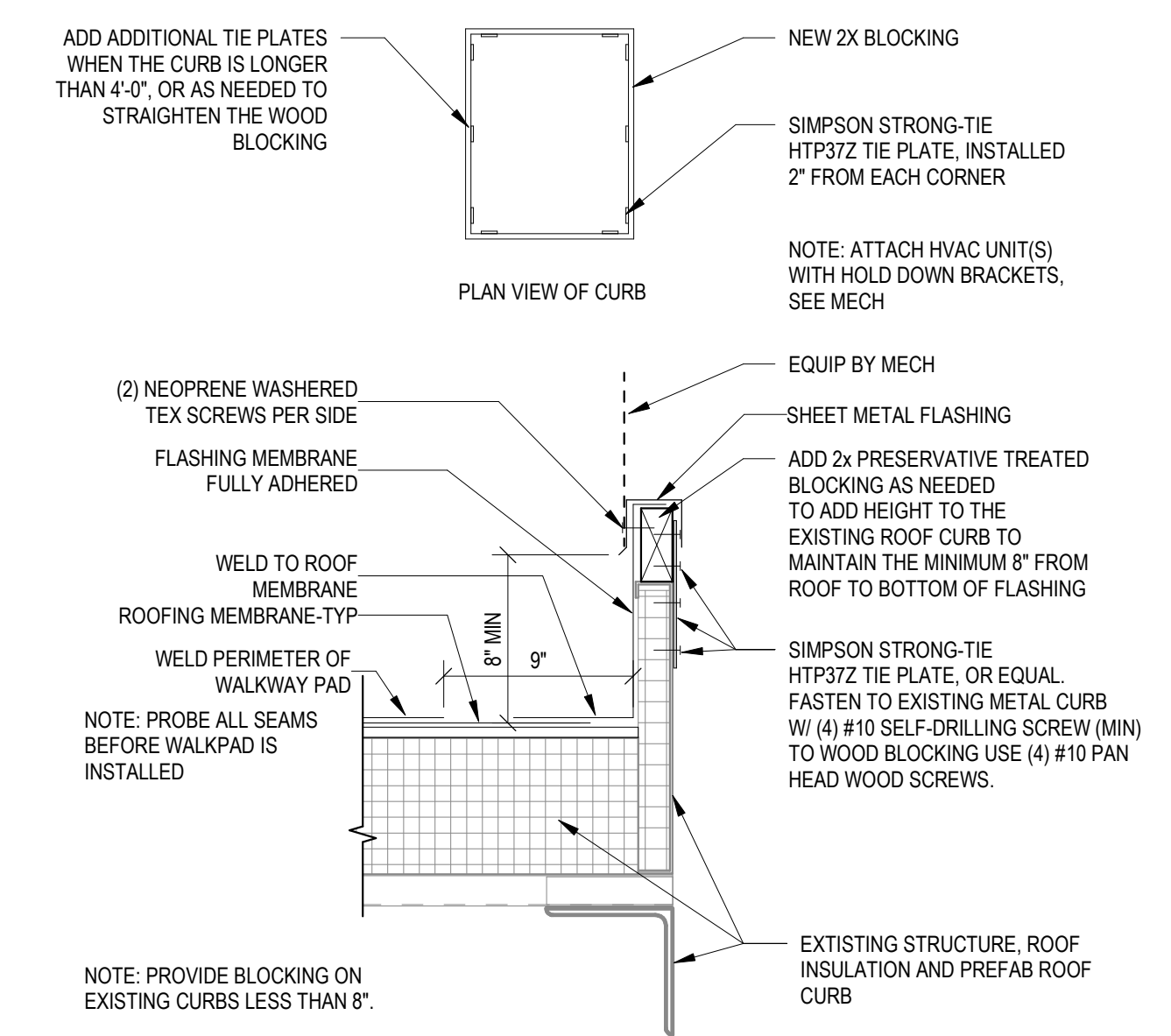
1 ROOF HVAC DEMOLITION PLAN
SCALE: 1/16" = 1'-0"

DEMOLITION GENERAL NOTES:

- A. ALL EXISTING DUCTWORK AND PIPING INDICATED ON PLAN WAS TAKEN FROM EXISTING MECHANICAL PLANS AND/OR LIMITED FIELD OBSERVATION. THE CONTRACTOR SHALL VERIFY LOCATION OF ALL EXISTING SYSTEMS PRIOR TO CONSTRUCTION AND SHALL NOTIFY THE ENGINEER OF ANY POTENTIAL CONFLICTS.
- B. CONTRACTOR SHALL HAVE A THOROUGH KNOWLEDGE OF ALL DRAWINGS, SPECIFICATIONS AND EXISTING CONDITIONS PRIOR TO BID. FAILURE TO ACQUIRE SUCH KNOWLEDGE WILL NOT RELIEVE THE RESPONSIBILITY OF THIS CONTRACTOR FOR PERFORMING THE WORK PROPERLY. NO ADDITIONAL COMPENSATION SHALL BE ALLOWED DUE TO THE CONTRACTOR'S FAILURE TO BECOME FAMILIAR WITH EXISTING CONDITIONS.
- C. FIELD VERIFY LOCATIONS AND QUANTITY OF ALL EXISTING EQUIPMENT, FIXTURES AND PIPING NECESSARY TO COMPLETE SCOPE OF WORK.
- D. [Hatched Area] INDICATED TO BE REMOVED - ALL REMOVED EQUIPMENT TO BE DISPOSED OF BY CONTRACTOR UNLESS NOTED AS RELOCATED/RETAINED IN DEMOLITION PLANS AND/OR KEYNOTES.
- E. [Dashed Area] INDICATES EXISTING CONDITIONS. [RTU] TYP TEXT OF EXISTING CONDITIONS - CONTRACTOR SHALL VERIFY ALL EXISTING CONDITIONS.
- F. ARRANGE ALL REQUIRED WORK TO KEEP DISRUPTIONS TO STORE OPERATIONS TO A MINIMUM. COORDINATE ANY DISRUPTIONS WITH CONSTRUCTION MANAGER AND STORE MANAGER.
- G. SUBMIT (2) COPIES OF MARKED-UP AS-BUILT UPDATES. ONE COPY TO BE RETAINED AT THE STORE. RETURN SECOND COPY TO BE FORWARDED TO THE PROJECT CONSTRUCTION MANAGER.
- H. CONTRACTOR SHALL COORDINATE ALL PHASES OF DEMOLITION.
- J. RECLAIM ALL CONTROLS, MODULES AND SHIP TO TARGET. PRE-PAD SHIPPING LABELS WILL BE PROVIDED. CONTACT: me.hahn@target.com (716) 686-8878
- K. REFER TO SPECIFICATION SECTION 01 7419 EQUIPMENT RECYCLING FOR THIRD PARTY RECYCLING COORDINATION.
- L. RECLAIM EXTERNAL VFD'S LESS THAN 8 YEARS OLD AND SHIP TO EMC. CONTACT: pavel@emc.com (800) 822-3555 EXT. 115

KEYNOTES:

- 1 REMOVE (E) RTU AND ALL ACCESSORIES. PREP CURB FOR (N) ADAPTER CURB. CAP GAS AND/OR CONDENSATE IF APPLICABLE AND RECONNECT PER M141.
- 2 REMOVE (E) RTU AND ALL ACCESSORIES. PREP CURB FOR (N) CURB CAP. CAP GAS AND/OR CONDENSATE IF APPLICABLE AT MAIN.
- 3 REMOVE (E) CONDENSING UNIT AND ACCESSORIES. INSULATE AND CAP ROOF PIPE PENETRATIONS WEATHERTIGHT.



2 EXTEND EXISTING ROOF CURB
NOT TO SCALE

Tag	Normal Cooling Capacity (Tons)	Exist Mfg	Exist Model	New Mfg	Connection to	New Model No.	Normal Cooling Capacity (Tons)	Operating Weight (Curb Adapter Not Included) (Tons)
1177 RTU-01 - Food Service	7.0	Axon	RK-7	York	EXIST CURB	ZJ078	6.5	1260
1177 RTU-02 - Office	5.0	Axon	RK-5	York	EXIST CURB	ZJ061	5.5	1020
1177 RTU-03 - Grocery Pick-up Storage	4.0	York	ZR049	York	EXIST CURB	ZJ037	4.0	EXIST
1177 RTU-04 - Office	1.0	Axon	RK-1	York	EXIST CURB	ZJ037	3.5	975
1177 RTU-05 - Guest Service	2.0	Axon	RK-2	York	EXIST CURB	ZJ037	3.0	975
1177 RTU-06 - Sales	12.5	Lennox	LGH1054BMG2	York	EXIST CURB	ZJ120	12.5	EXIST
1177 RTU-07 - Sales	10.0	Axon	RK-10	York	EXIST CURB	ZJ120	10.0	1235
1177 RTU-08 - Sales	35.0	Johnson	PRG4222CL	York	EXIST CURB	ZJ120	35.0	EXIST
1177 RTU-09 - Sales/Market	15.0	Axon	RK-15	York	NEW CURB	AY15	15.0	2200
1177 RTU-10 - Sales	10.0	Axon	RK-10	York	EXIST CURB	ZJ120	10.0	1235
1177 RTU-11 - Sales	10.0	Axon	RK-10	York	EXIST CURB	ZJ120	10.0	1235
1177 RTU-12 - Sales	10.0	Axon	RK-10	York	EXIST CURB	ZJ120	10.0	1235
1177 RTU-13 - Sales	10.0	Axon	RK-10	York	EXIST CURB	ZJ120	10.0	1235
1177 RTU-14 - Sales	12.5	Lennox	LGH1054BMG2	York	EXIST CURB	ZJ120	12.5	EXIST
1177 RTU-15 - Sales	10.0	Axon	RK-10	York	EXIST CURB	ZJ120	10.0	1235
1177 RTU-16 - Sales	35.0	Johnson	PRG4222CL	York	EXIST CURB	ZJ120	35.0	EXIST
1177 RTU-17 - Sales	12.5	Lennox	LGH1054BMG2	York	EXIST CURB	ZJ120	12.5	EXIST
1177 RTU-18 - Marketing	12.0	Axon	RK-13	York	EXIST CURB	ZJ160	12.5	1660
1177 RTU-19 - Stock	0.0	Axon	RK-0	York	EXIST CURB	ZJ160	0.0	1325
1177 RTU-20 - Pharmacy	1.0	Axon	RK-1	York	EXIST CURB	ZJ037	3.0	975
1177 RTU-21 - Inter Office	5.0	York	ZJ037	York	EXIST CURB	ZJ037	5.0	EXIST
1177 RTU-22 - Control Room	0.0	York	ZJ037	York	NEW CURB	ZJ037	3.0	1017
	228.5						228.0	
							Total Replacement	228.0



Date	No.	Description
08/12/2022		2023 RTU EOL REPLACEMENT



DATE: 08/12/2022 EXP: 12/31/22

TARGET
KANSAS CITY NORTH, MO
8420 N MADISON AVE, KANSAS CITY, MO 64155

Project Number **T-1177**
Config: RR
Drawn By **DJ**
Checked By **MDW**

MECHANICAL ROOF DEMOLITION PLAN

MD141