

1 MECHANICAL DEMOLITION PLAN  
M0.01 SCALE: 3/32" = 1'-0"

**DEMOLITION NOTES**

- MECHANICAL CONTRACTOR SHALL VERIFY EXISTING CONDITIONS PRIOR TO COMMENCING WITH DEMOLITION WORK. DIFFUSERS, GRILLES, DAMPERS, DUCT HEATERS, FANS, ETC. SHALL BE SALVAGED AS INDICATED ON PLAN FROM AREAS SCHEDULED FOR DEMOLITION.
- SALVAGED EQUIPMENT MAY BE RE-USED OR RELOCATED WHEN INDICATED PER SHEET M1.01. UNUSED ITEMS SHALL BE RETURNED TO DELHAIZE AMERICA SHARED SERVICES GROUP, LLC
- ALL EXISTING MECHANICAL EQUIPMENT SHALL REMAIN UNLESS NOTED OTHERWISE.
- WHEN FOOD LION DIRECTS THAT THE FIRE ALARM SYSTEM IS GETTING UPGRADED (VERIFY WITH SESCO), THE FIRE ALARM CONTRACTOR WILL INSTALL AND WIRE ALL NEW DUCT DETECTORS IN ACCORDANCE WITH LOCAL CODE. SESCO WILL TIE IN THE INTERFACE FROM THE FIRE ALARM SYSTEM TO THE ECP PANEL. ONCE DIRECTED BY SESCO THE MECHANICAL CONTRACTOR WILL BE RESPONSIBLE FOR REMOVING ALL OLD SMOKE DETECTORS. WIRING FROM DETECTORS IS TO BE REMOVED TO ASSOCIATED JUNCTION BOXES AND CAPPED OFF WITH WIRE NUTS. WIRING FROM ECP TERMINALS IS TO BE REMOVED TO TROUGH AND CAPPED OFF WITH WIRE NUTS.

**SYMBOL LEGEND**

- EXISTING DUCTWORK TO REMAIN - SIZE AS INDICATED. FIRST DIMENSION IS FACE OF DUCT SHOWN ON PLAN.
- EXISTING DUCTWORK TO BE REMOVED.
- MOTOR OPERATED DAMPER (MOD)
- MANUAL VOLUME DAMPER
- LIMIT OF REMOVED AND/OR ABANDONED DUCTWORK

**SENSOR LEGEND**

- SMOKE DETECTOR
- RELATIVE HUMIDITY
- TEMPERATURE
- AIR PRESSURE SWITCH
- THERMOSTAT
- DISCHARGE AIR SENSOR

**ABBREVIATIONS**

- AHU AIR HANDLING UNIT
- A.F.F. ABOVE FINISHED FLOOR
- O.A. OUTSIDE AIR
- S.A. SUPPLY AIR
- R.A. RETURN AIR
- RTU ROOFTOP UNIT (AIR CONDITIONING)

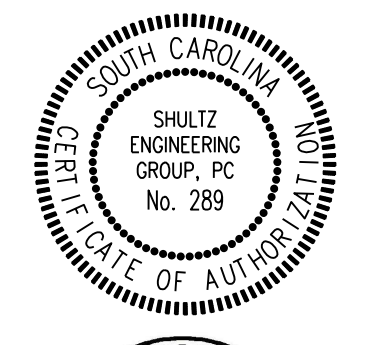
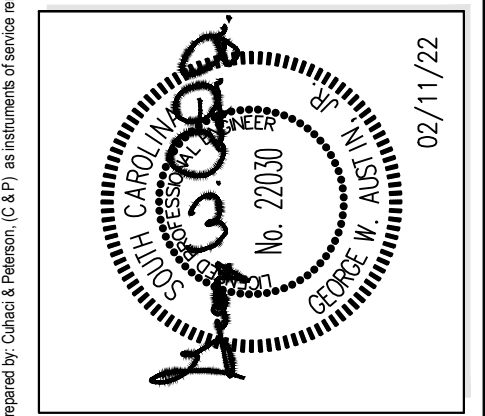
1925 Prospect Ave.  
Orlando, FL 32814  
P (407) 661-9100  
F (407) 661-9101  
www.ep.com  
Florida Corporate Certificate #AA 000028



**FOOD LION**  
2110 EXECUTIVE DRIVE  
SALISBURY, NC 28145  
PH: 704-633-8250 FX: 704-636-4940

PROJECT NAME  
**FOOD LION #2857**  
1370 CHESTNUT ST. NE  
ORANGEBURG, SC 29115  
2857FLMH22

SHEET TITLE  
**MECHANICAL DEMOLITION PLAN**



**SHULTZ ENGINEERING GROUP**  
212 N. McDowell St  
Suite 204  
Charlotte, NC 28204  
(P) 704-334-7363  
(F) 704-347-0993  
www.shultzeg.com  
SEG - 21-425

PROJECT NO.	2210856
DATE	02/11/2022
DRAWN	HMM
CHECKED	CCC
RELEASE	
PROJECT NO.	2210856
DATE	02/11/2022
DRAWN	HMM
CHECKED	CCC
PROJECT NO.	2210856
DATE	02/11/2022
DRAWN	HMM
CHECKED	CCC

2857M0.01\_00  
**M0.01**

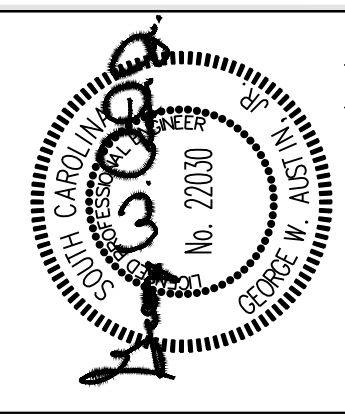
1925 Prospect Ave.  
Orlando, FL 32814  
P (407) 661-9100  
F (407) 661-5101  
www.ep.com



**FOOD LION**  
7110 EXECUTIVE DRIVE  
SALISBURY, NC 28145  
PH: 704-636-8250 FAX: 704-636-4940

PROJECT NAME  
**FOOD LION #2857**  
1370 CHESTNUT ST. NE  
ORANGEBURG, SC 29115  
2857FLM422

SHEET TITLE  
**MECHANICAL RENOVATION PLAN**



RELEASE

PROJECT NO.	2210866
DATE	02/11/2022
DRAWN	HMM
CHECKED	CCC

2857M1.01\_00  
**M1.01**

**RENOVATION NOTES**

- M.C. SHALL FIELD VERIFY ALL EXISTING CONDITIONS AT THE JOB SITE PRIOR TO BEGINNING WORK. NOTIFY FOOD LION SHARED SERVICES GROUP, L.L.C. Construction Manager OF ANY DISCREPANCIES.
- FOR TRANSVERSE JOINTS 12" WIDE AND LARGER, PROPRIETARY DUCT CONNECTORS SHALL BE DUCT MATE OR WARD AND INSTALLED IN COMPLETE ACCORDANCE WITH MANUFACTURERS RECOMMENDATIONS. DUCT SEALANT TO BE DUCT MATE 440 GASKET TYPE OR EQUAL. ALL DUCTWORK SHALL BE CONSTRUCTED TO A 2" PRESSURE CLASS. FOR TRANSVERSE JOINTS 11" WIDE OR SMALLER, THE ABOVE MAY BE USED, OR REFER TO SMACNA TO DETERMINE PROPER DUCT CONSTRUCTION FOR THE SPECIFIED PRESSURE CLASS.
- ALL DUCTWORK WITH A WIDTH DIMENSION OF 46" OR LARGER SHALL BE SUPPORTED WITH TRAPEZE TYPE HANGERS. SUPPORTS SHALL BE ATTACHED TO DUCTWORK PRIOR TO APPLICATION OF EXTERNAL INSULATION. INSULATION SHALL BE APPLIED TO COMPLETELY COVER DUCTWORK AND SUPPORTS.
- DUCTS CONNECTING TO NEW AND/OR RELOCATED DIFFUSERS SHALL BE INLET SIZE OF DIFFUSER. PROVIDE VOLUME DAMPER FOR BRANCH TAKEOFF AS INDICATED ON PLAN.
- ALL LONGITUDINAL SEAMS AND NON-GASKETED TRANSVERSE JOINTS SHALL BE EXTERNALLY SEALED WITH HIGH PRESSURE DUCT SEALER BY UNITED MCGILL OR EQUAL. SEALER SHALL BE APPLIED BY M.C. AND APPROVED BY FOOD LION CONSTRUCTION MANAGER BEFORE DUCT INSULATION IS INSTALLED.
- ALL NEW DUCT SIZES SHOWN ARE "INSIDE-CLEAR" DIMENSIONS. ALL NEW DUCTWORK SHALL HAVE 2", 3/4" PCF, EXTERNALLY WRAPPED INSULATION WITH VAPOR BARRIER (SEE SPECIFICATIONS). ROUTE ALL NEW DUCTWORK AS TIGHT TO ROOF JOISTS AS PRACTICAL. COORDINATE ROUTING TO AVOID CONFLICTS WITH OTHER TRADES.
- FLEXIBLE DUCT MAY BE USED AT END OF RUNOUTS IN LENGTHS NOT EXCEEDING 4'-0". INSTALL PER SMACNA STANDARDS (SEE SPECIFICATIONS).
- PROVIDE 90° METAL (24 GA. MINIMUM) DUCT ELBOW WITH 4 PIECE GORE AT ALL CEILING DIFFUSER/GRILLE-TO-FLEX DUCT CONNECTIONS.
- M.C. SHALL VERIFY SIZE OF EXISTING DUCTWORK SCHEDULED TO REMAIN. EQUIPMENT OPENINGS AS REQUIRED FOR PROPER CONNECTION OF NEW TO EXISTING.
- M.C. SHALL INSPECT AND REPAIR DUCTWORK AS REQUIRED TO PROVIDE A TIGHT AIR DISTRIBUTION SYSTEM. M.C. SHALL CAP AND INSULATE ALL OPEN DUCT TERMINATIONS AND OTHER OPENINGS IN EXISTING DUCTWORK DIRECTLY RESULTING FROM OR INCIDENTAL TO DEMOLITION. ALL SUPPLY AND RETURN OUTLETS SHALL BE BALANCED TO THE AIR FLOW QUANTITIES SHOWN ON DRAWINGS.
- M.C. SHALL COORDINATE ALL WORK WITH OTHER TRADES TO AVOID CONFLICTS.
- COORDINATE ALL DIFFUSER AND GRILLE LOCATIONS WITH CEILING GRID AS SHOWN ON ARCHITECTURAL DRAWINGS.
- TEMPERATURE AND HUMIDITY SENSORS AND CONTROLS SHALL BE MOUNTED @ 5'-8" A.F.F. U.N.O. VERIFY MOUNTING HEIGHTS, LOCATIONS, AND CONTROL SETTINGS WITH PROPER FOOD LION CONSTRUCTION MANAGER.
- CONTROL WIRING FOR NEW SENSORS, MOTORIZED DAMPERS, ETC. TO BE FURNISHED AND INSTALLED BY M.C. CONTROL WIRING SHALL BE ROUTED TO ECP/EMCC PANELS UNLESS OTHERWISE INDICATED. E.C. SHALL PROVIDE CONDUIT SYSTEM WITH PULL STRINGS. COORDINATE CONTROL WORK WITH PROPER FOOD LION CONSTRUCTION MANAGER.
- EXISTING MOTOR STARTER CONTROLS FOR THE MACHINE ROOM TO BE WIRED TO ECP.
- ALL SENSOR CONTROL WIRING SHALL BE SHIELDED (MINIMUM #22 AWG OR LARGER). CONTROL WIRING SHALL BE STRANDED (#14 AWG). DO NOT MIX SENSOR CABLE AND CONTROL WIRING IN SAME CONDUIT.
- M.C. TO COORDINATE DUCTWORK SIZES WITH CLEARANCES ABOVE CEILING. M.C. TO NOTIFY PROPER FOOD LION CONSTRUCTION MANAGER OF ANY CONFLICTS.
- REFER TO SPECIFICATIONS, DIVISION 23 SECTIONS FOR ADDITIONAL MECHANICAL REQUIREMENTS.
- MECHANICAL CONTRACTOR IS RESPONSIBLE FOR CONNECTING/RECONNECTING AHU DRAINS.
- ALL EXHAUST HOODS SHALL BE INSTALLED 6"-8" ABOVE FINISHED FLOOR UNLESS NOTED OTHERWISE.
- THE MECHANICAL CONTRACTOR SHALL BE RESPONSIBLE FOR ALL LABOR, MATERIAL AND WORKSMANSHIP INSTALLED BY HIM UNDER THE SPECIFICATIONS AND TO CORRECT ANY DEFICIENCIES ADJUDGED BY FOOD LION. THIS GUARANTEE SHALL EXTEND FOR A PERIOD OF NOT LESS THAN TWELVE (12) MONTHS FROM THE DATE OF THE FINAL PROJECT ACCEPTANCE BY FOOD LION SHARED SERVICES GROUP, L.L.C. AGAINST ANY DEFECTS OR SYSTEM FAILURE. ALL EQUIPMENT MANUFACTURERS' WARRANTIES WHICH EXTEND BEYOND THE FIRST TWELVE (12) MONTHS SHALL BE TRANSFERRED TO FOOD LION. HOWEVER, IT SHALL BE UNDERSTOOD BY ALL PARTIES CONCERNED THAT THE WARRANTIES PERTAIN ONLY TO FURNISHING OF MATERIAL BY THE MANUFACTURER AND SHALL NOT INCLUDE REPLACEMENT LABOR COSTS, UNLESS OTHERWISE DESCRIBED BY THE MANUFACTURER.
- ENGINEER OF RECORD TO PROVIDE ALL SEISMIC REQUIREMENTS WHEN APPLICABLE.

**SENSOR LEGEND**

- ⊖ THERMOSTAT
- ⊖<sub>RH</sub> RELATIVE HUMIDITY
- ⊖<sub>AP</sub> AIR PRESSURE SWITCH
- ⊖<sub>T</sub> TEMPERATURE
- ⊖<sub>SD</sub> SMOKE DETECTOR
- ⊖<sub>AS</sub> DISCHARGE AIR SENSOR

- NOTES:**
- THE E.C. IS RESPONSIBLE FOR PROVIDING COMMUNICATION CABLE FOR ALL REFRIGERATION CONTROLLERS AND THE HVAC CONTROLLER. THIS WILL BE IN THE FORM OF CAT5 CABLES FOR EACH CONTROLLER WITH STORES THAT HAVE E-2 CONTROLLERS OR 4-WIRE SHIELDED CABLE WITH STORES THAT HAVE EARLIER VERSIONS OF CPC CONTROLLERS. COORDINATE WITH SESCO OR ENERGY TEAM MEMBER.
  - M.C. SHALL PROVIDE (1) PAIR OF CONTROL WIRES FROM EACH EXISTING AND OR NEW REFRIGERATION RACK TO THE EXISTING AND/OR NEW ECP FOR RECLAIM HEAT STAGING. EC SHALL PROVIDE REQUIRED CONDUIT. EMS PERSONNEL SHALL MAKE FINAL TERMINATION AND PANEL MODIFICATIONS AS REQUIRED.
  - NEW AND/OR EXISTING SENSORS, CONTROLS, ETC. WITH NEW WIRING AND CONNECTIONS TO ECP/EMCC AS APPLICABLE.

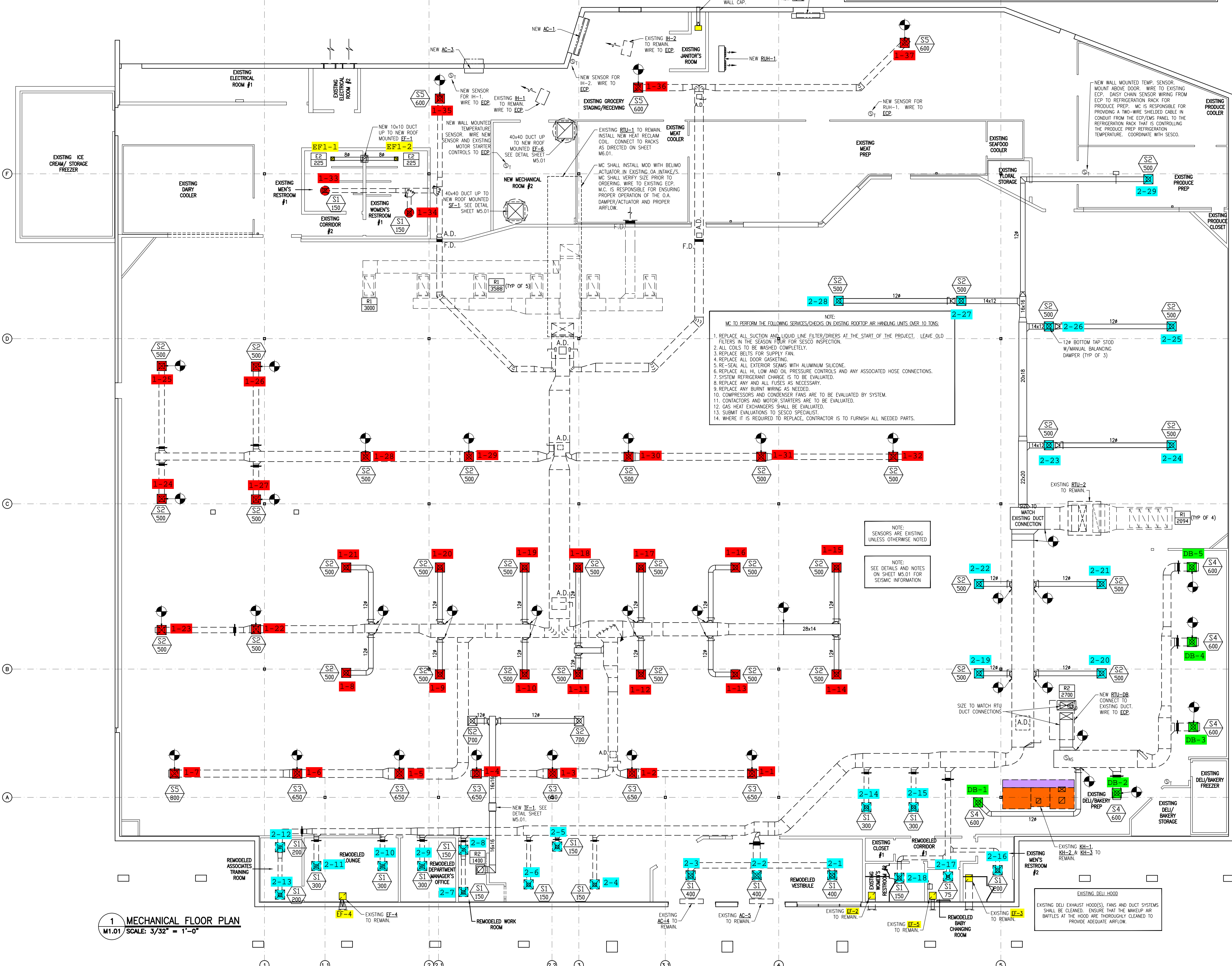
- ALL CONTROL WIRING PROVIDED BY THE MECHANICAL CONTRACTOR IS TO BE 14 GA. STRANDED. BX CABLE IS NOT ALLOWED. ALL SHIELDED CABLE IS TO BE 22 GA. OR LARGER. ALL WIRING SHALL BE IN CONDUIT PROVIDED BY ELECTRICIAN. SENSOR CABLE CANNOT BE IN THE SAME CONDUIT AS THE CONTROL WIRING. TERMINATIONS FOR THE MECHANICAL CONTROLS BY MECHANICAL CONTRACTOR.
- WHEN DIRECTED BY FOOD LION, M.C. WILL BE RESPONSIBLE FOR REMOVING ALL OLD SMOKE DETECTORS. ONCE SYSTEM HAS BEEN SWITCHED OVER TO FIRE ALARM CONTACT, SESCO WILL NOTIFY G.C. IN WRITING. M.C. WILL THEN REMOVE OLD DETECTORS. WIRING FROM DETECTORS IS TO BE REMOVED TO ASSOCIATED JUNCTION BOXES AND CAPPED OFF WITH WIRE NUTS. WIRING FROM ECP TERMINALS IS TO BE REMOVED TO WIRING TROUGH AND CAPPED OFF WITH WIRE NUTS.

**ABBREVIATIONS**

AHU	AIR HANDLING UNIT	OA	OUTSIDE AIR
AFF	ABOVE FINISHED FLOOR	RTU	ROOFTOP UNIT (AIR CONDITIONING)

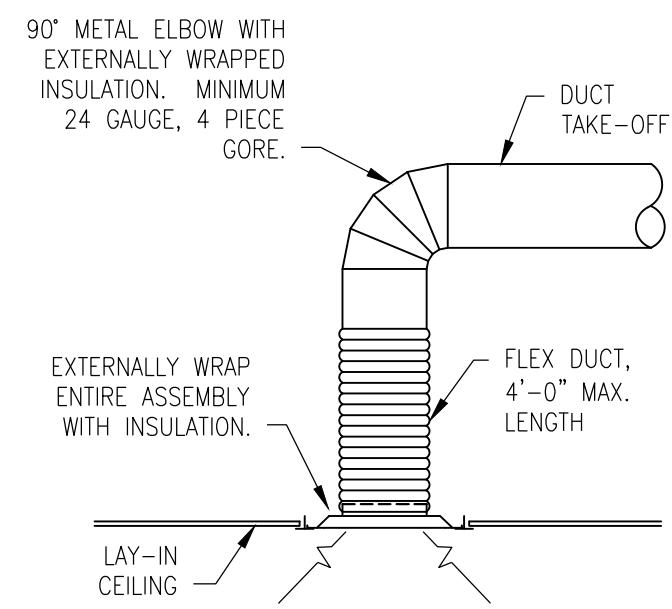
**SYMBOL LEGEND**

	NEW DUCTWORK - SIZE AS INDICATED FIRST DIMENSION IS FACE OF DUCT SHOWN ON PLAN.		EXISTING DUCTWORK RE-USED IN PLACE.
	ELECTRIC DUCT HEATER		MOTOR OPERATED DAMPER (NEW OR EXISTING AS INDICATED)
	VOLUME DAMPER		CONNECT TO EXISTING
	NEW SUPPLY DIFFUSER		UNDERCUT DOOR
	RE-USED/RELOCATED EXISTING DIFFUSER		NEW RETURN GRILLE

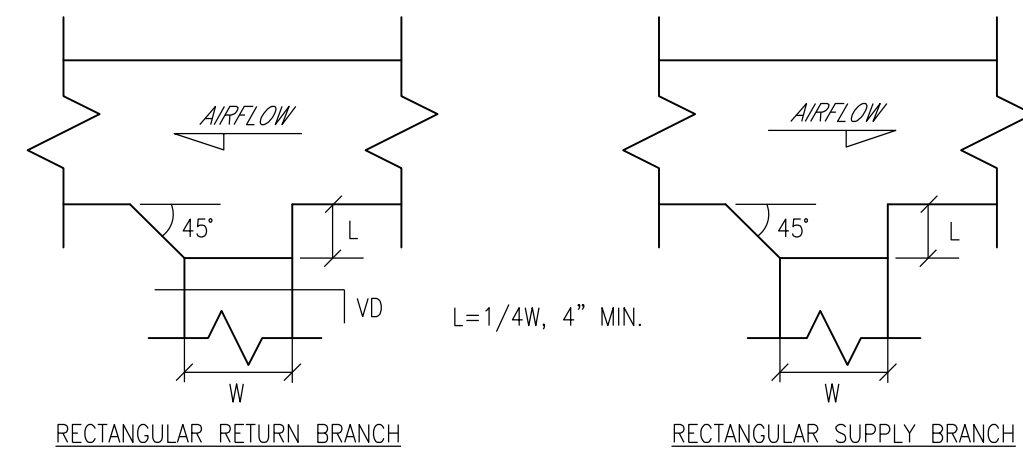


**1 MECHANICAL FLOOR PLAN**  
M1.01 SCALE: 3/32" = 1'-0"

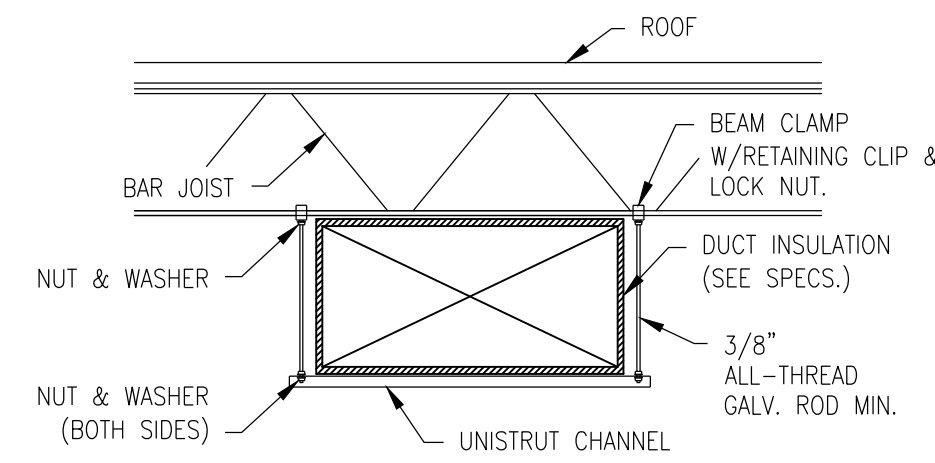
**SHULTZ ENGINEERING GROUP**  
212 N. McDowell St  
Suite 204  
Charlotte, NC 28204  
(704) 334-7363  
(704) 347-0093  
www.shultzeng.com  
SEG - 21-425



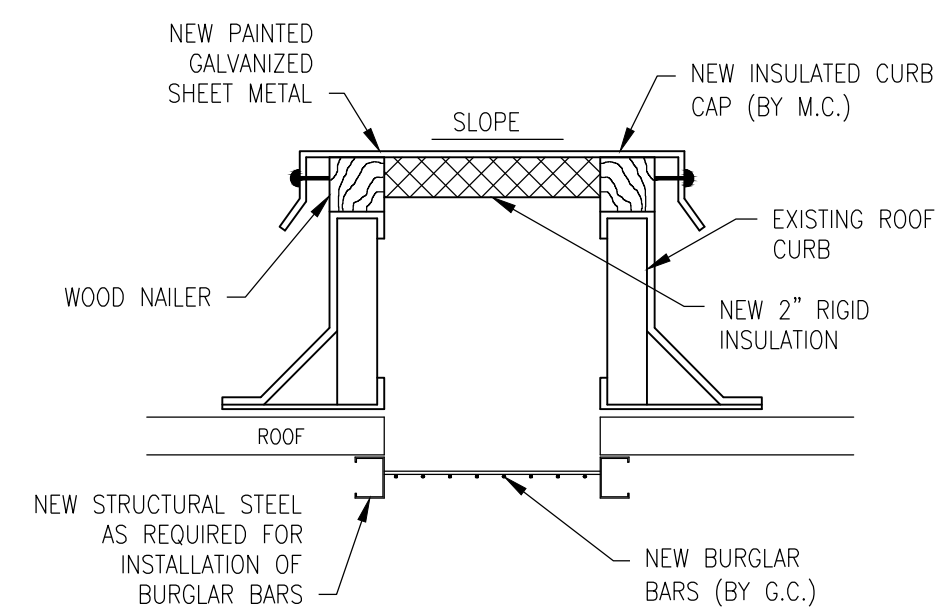
**1 SUPPLY DIFFUSER INSTALLATION DETAIL**  
M5.01 NOT TO SCALE



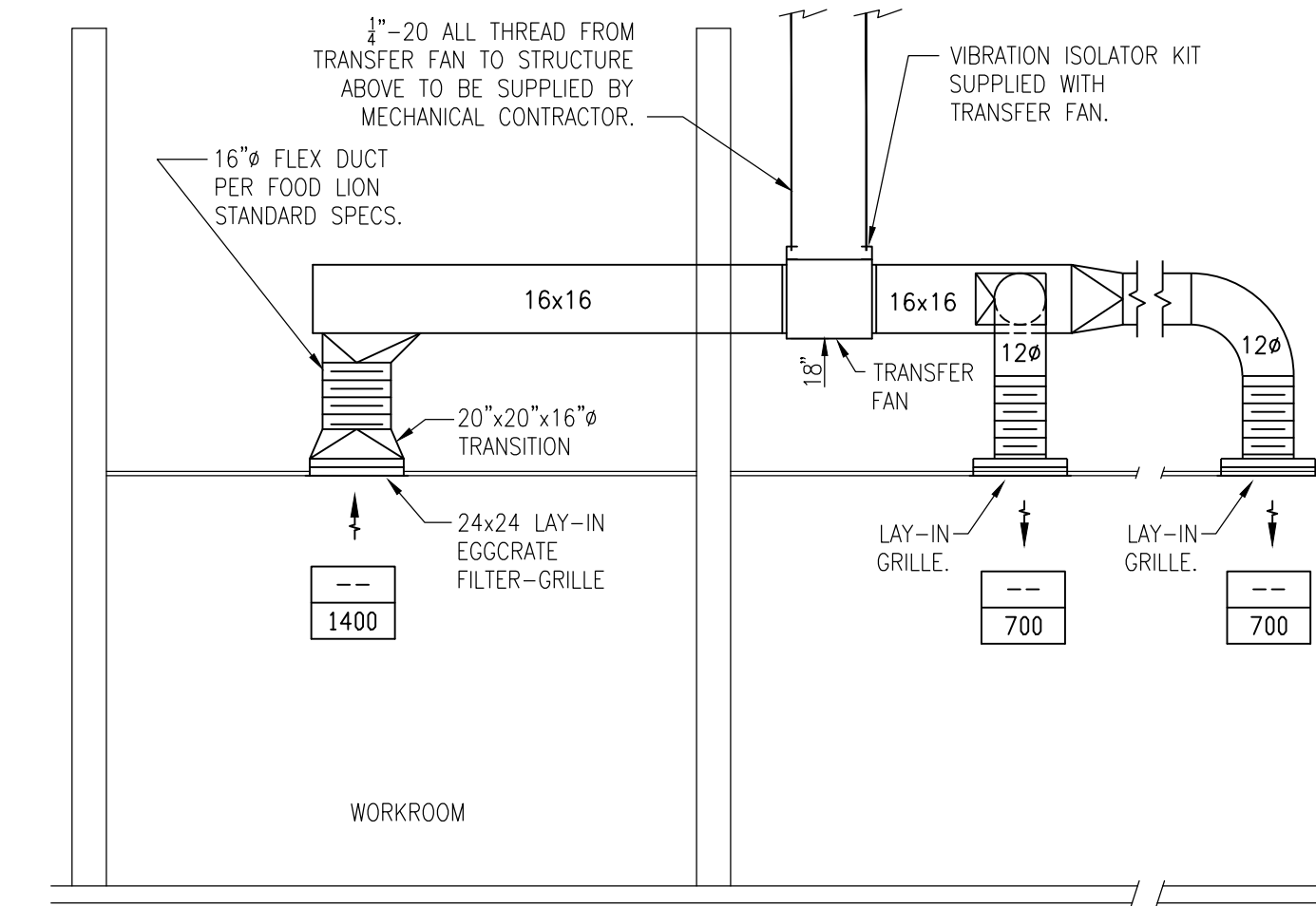
**2 TYPICAL DUCT BRANCH TAKEOFF**  
M5.01 NOT TO SCALE



**3 RECTANGULAR DUCT HANGER DETAIL**  
M5.01 NOT TO SCALE

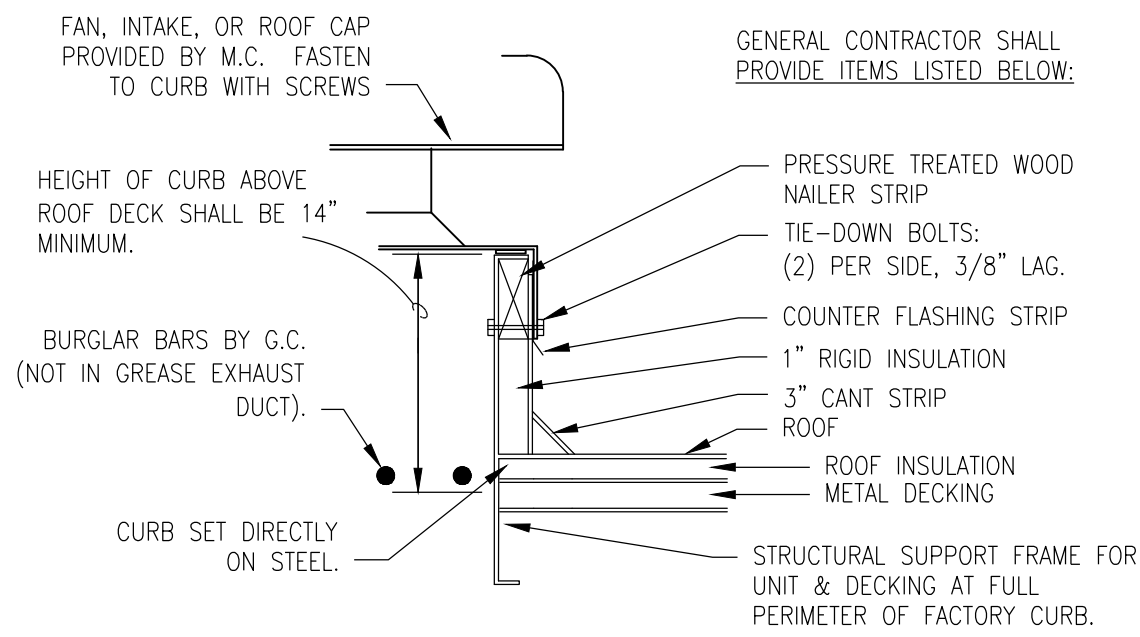


**4 WEATHERPROOF INSULATED CURB CAP DETAIL**  
M5.01 NOT TO SCALE

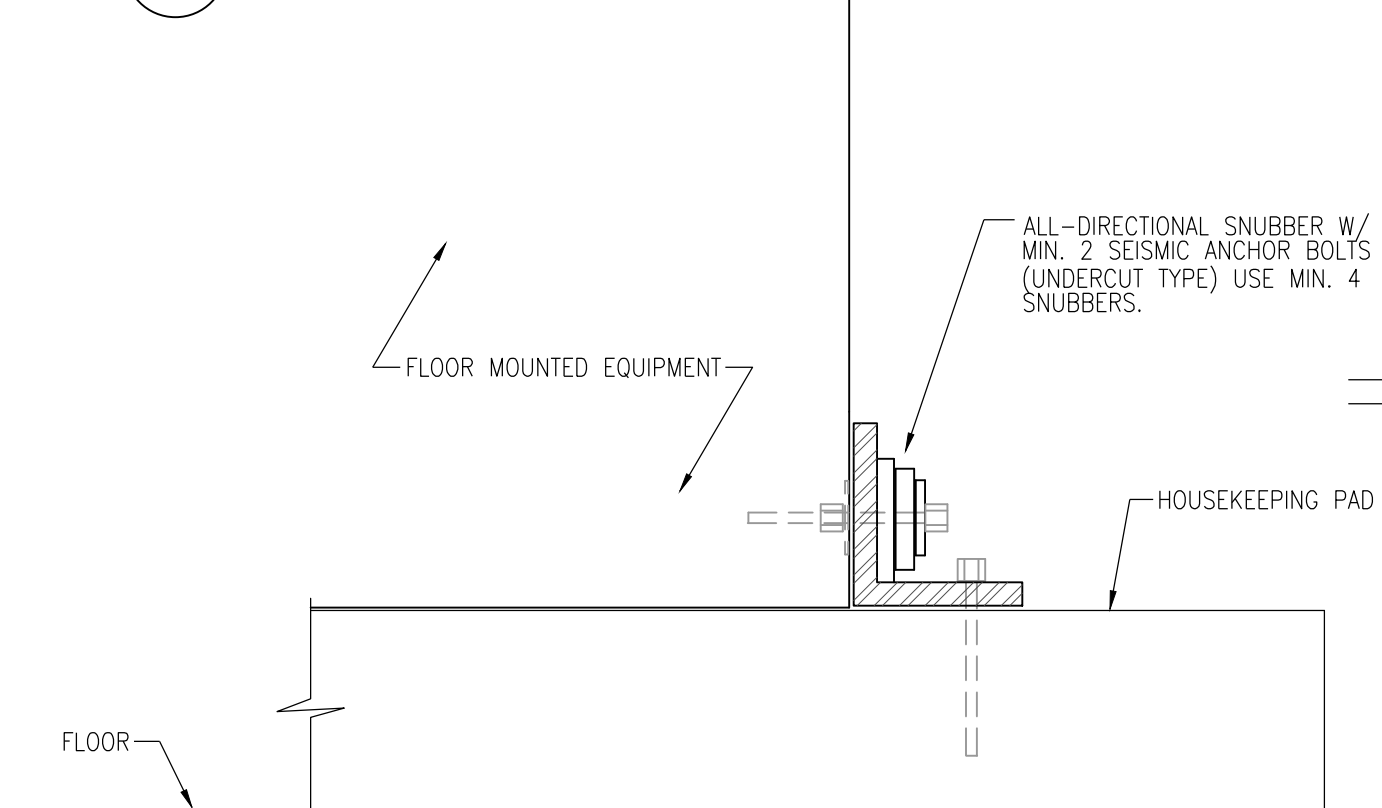


- NOTE:**
- TRANSFER FAN TO BE WIRED TO WORKROOM LIGHTING CIRCUIT. ENSURE THAT THE WORKROOM LIGHTING CIRCUIT IS ON EMS LOAD 1. IF THE CIRCUIT IS NOT ON LOAD 1, E.C. IS TO ADD IT AND A CONTACTOR (IF NEEDED) TO LOAD 1.
  - TRANSFER FAN SHALL BE MOUNTED OUTSIDE OF THE WORKROOM OFFICE PERIMETER.
  - SUPPLY DIFFUSERS TO BE A MINIMUM OF 10'-0" AWAY FROM DOOR.
  - BOTTOM OF TRANSFER FAN TO BE MOUNTED A MAXIMUM OF 18" ABOVE CEILING GRID FOR SERVICE ACCESS.
  - SUPPLY & RETURN DUCT TO BE INTERNALLY LINED WITH 1/2" THK. ARMACELL AP ARMAFLEX OR EQUAL.

**5 WORKROOM TRANSFER FAN INSTALLATION DETAIL**  
M5.01 NOT TO SCALE

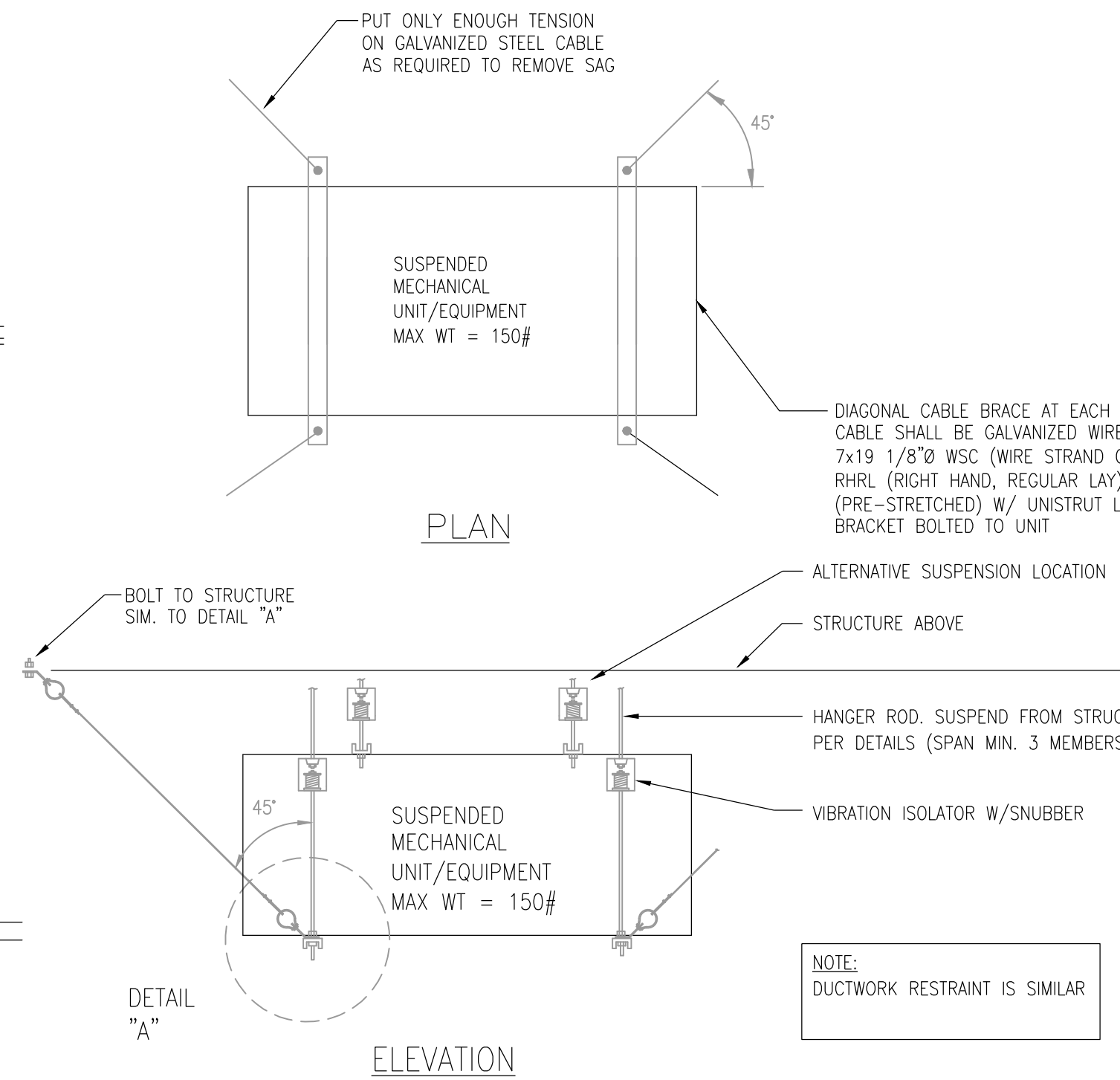


**6 EXHAUST FAN CURB INSTALLATION DETAIL**  
M5.01 NOT TO SCALE

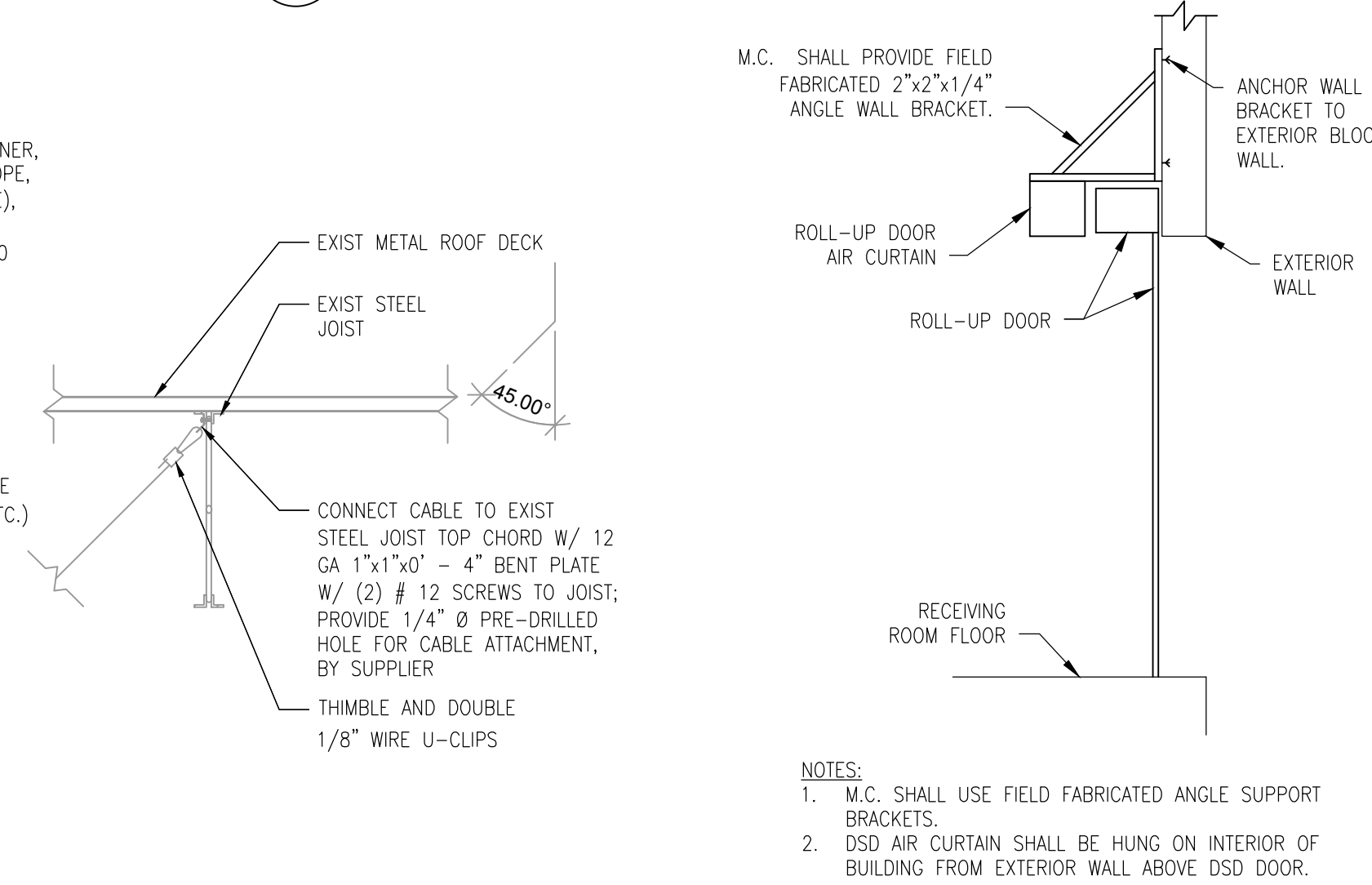


- NOTES:**
- LOCATE SUPPLY FAN A MINIMUM OF 10'-0" AWAY FROM ANY EXHAUST FANS OR PLUMBING VENTS.
  - LOCATE EXHAUST FAN A MINIMUM OF 10'-0" AWAY FROM SUPPLY FAN INTAKES.
  - COORDINATE DUCT LOCATION WITH REFRIGERANT RACKS & ROOF HATCH.
  - COORDINATE WITH OTHER TRADES TO AVOID PIPING & CONDUIT INTERFERENCES WITH DUCTWORK.

**7 MECHANICAL ROOM FAN INSTALLATION DETAIL**  
M5.01 NOT TO SCALE



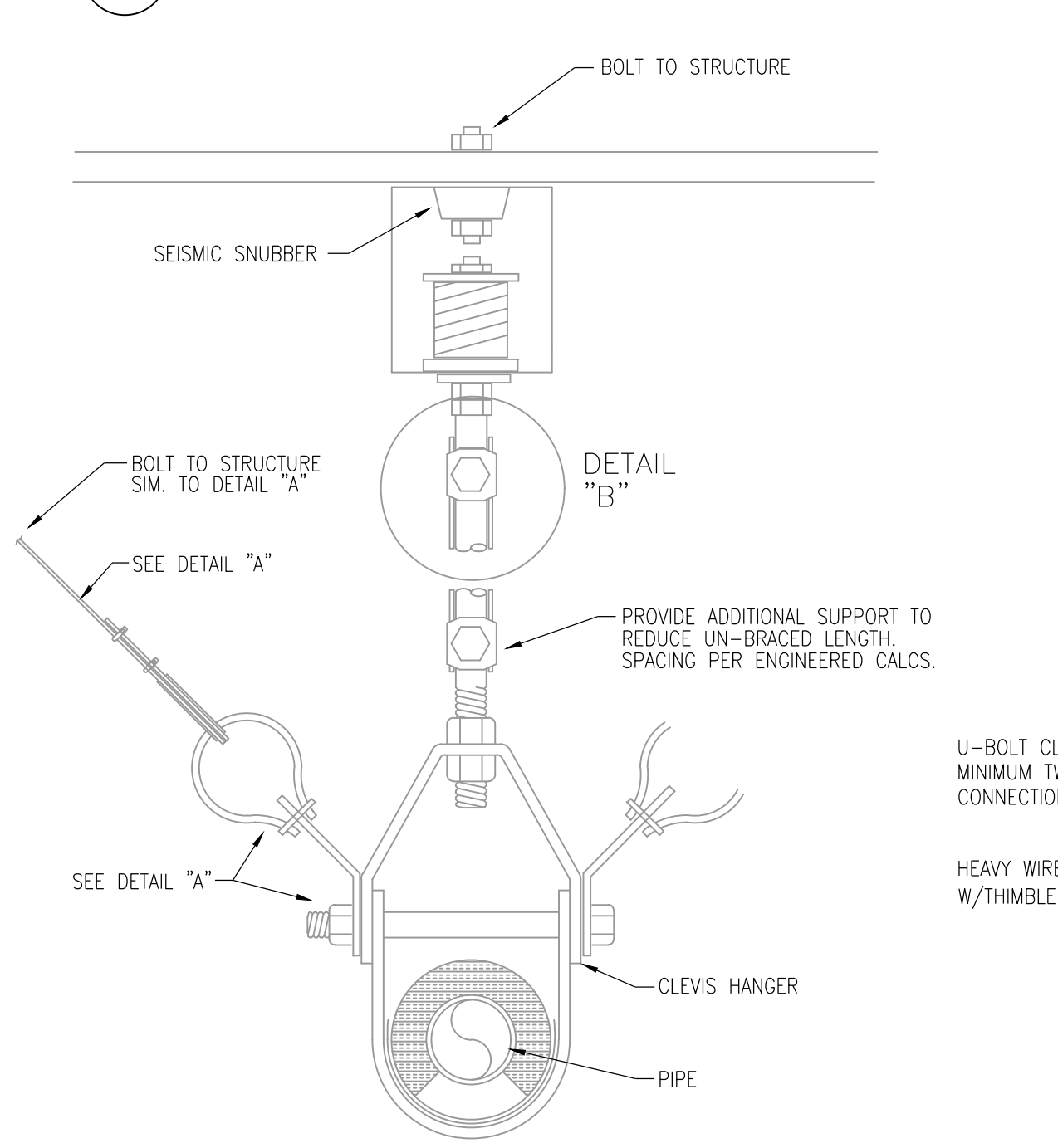
**8 SEISMIC RESTRAINT DETAIL - SUSPENDED EQUIPMENT**  
M5.01 NOT TO SCALE



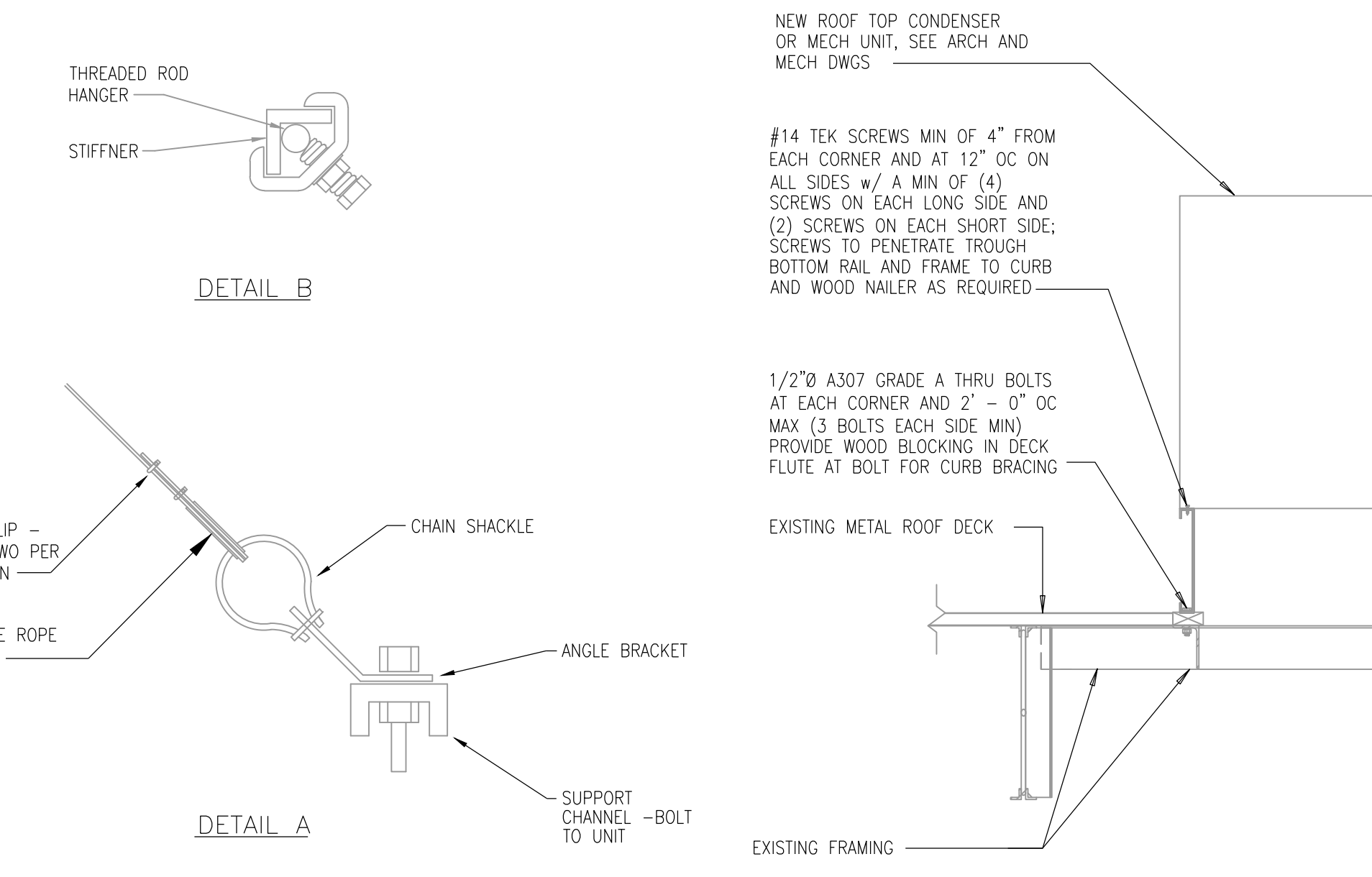
- NOTES:**
- M.C. SHALL USE FIELD FABRICATED ANGLE SUPPORT BRACKETS.
  - DSD AIR CURTAIN SHALL BE HUNG ON INTERIOR OF BUILDING FROM EXTERIOR WALL ABOVE DSD DOOR.

**9 ROLL UP DOOR AIR CURTAIN INSTALLATION DETAIL**  
M5.01 NOT TO SCALE

**10 SEISMIC RESTRAINT DETAIL - FLOOR MOUNTED EQUIPMENT**  
M5.01 NOT TO SCALE



**11 SEISMIC RESTRAINT DETAIL - PIPING**  
M5.01 NOT TO SCALE



**12 DETAIL A AND DETAIL B**  
M5.01 NOT TO SCALE

**13 RTU AND CURB SEISMIC BRACING DETAIL**  
M5.01 NOT TO SCALE

**NOTES ON SEISMIC BRACING**

IBC SHORT SEISMIC PERFORMANCE SPECIFICATION

UNLESS OTHERWISE SPECIFIED, ALL MECHANICAL, ELECTRICAL, AND PLUMBING EQUIPMENT, PIPE, AND DUCT SHALL BE RESTRAINED TO RESIST SEISMIC FORCES EXCEPT THOSE ITEMS SPECIFICALLY EXEMPTED BY CODE.

RESTRAINT DEVICES SHALL BE DESIGNED AND SELECTED TO MEET THE SEISMIC REQUIREMENTS AS DEFINED IN THE LATEST ISSUE OF THE IBC OR LOCAL JURISDICTION BUILDING CODE. SEISMIC RESTRAINT SUPPLIER SHALL PROVIDE SUBMITTALS WITH CALCULATIONS TO DETERMINE RESTRAINT LOADS RESULTING FROM SEISMIC FORCES PRESENTED IN THE IBC, CHAPTER 16 LATEST EDITION. SUBMITTALS TO INCLUDE ANCHOR CALCULATIONS FOR ALL FLOOR AND ROOF MOUNTED EQUIPMENT (INCLUDING WIND LOAD CALCULATIONS WHERE APPLICABLE), ALL SUSPENDED AND WALL MOUNTED EQUIPMENT 20 LBS OR GREATER (INCLUDING AIR TERMINALS), LAYOUT DRAWINGS INDICATING EXACT LOCATIONS OF RESTRAINTS FOR PIPING AND DUCTWORK.

SEISMIC CALCULATIONS AND LAYOUT DRAWINGS SHALL BE CERTIFIED & STAMPED BY AN ENGINEER IN THE EMPLOY OF THE SEISMIC EQUIPMENT MANUFACTURER WITH A MINIMUM 5 YEARS EXPERIENCE AND LICENSED IN THE PROJECT'S JURISDICTION. THE SEISMIC SUPPLIER SHALL PROVIDE A CERTIFICATE OF PROFESSIONAL LIABILITY INSURANCE FOR THE SEISMIC ENGINEER FOR AN AMOUNT NOT LESS THAN \$1,000,000.00.

THE PROFESSIONAL ENGINEER WORKING FOR THE SEISMIC RESTRAINT SUPPLIER SHALL PROVIDE A QUALITY ASSURANCE PLAN PER SECTION 1705 OF THE NCSC LATEST EDITION FOR THE SEISMIC RESTRAINT SYSTEM AND HE OR HIS DESIGNATED REPRESENTATIVE SHALL MAKE PERIODIC INSPECTIONS TO ASSIST THE INSTALLING CONTRACTOR IN COMPLYING WITH THE PLAN. ALL SEISMIC CABLE RESTRAINTS SHALL BE UL LISTED OR INDEPENDENTLY TESTED, CERTIFIED AND APPROVED BY AN OUTSIDE AGENCY AS A SYSTEM OF SEISMIC RESTRAINTS.

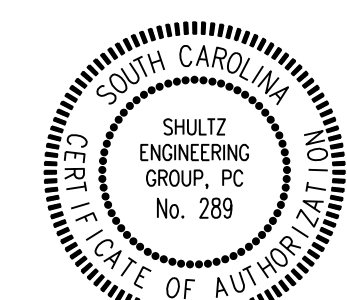
ALL ROOF CURBS FOR GAS FIRED RTU'S SHALL BE DESIGNED AND CERTIFIED BY A PROFESSIONAL ENGINEER TO RESIST THE REQUIRED SEISMIC LOADS. THE CURB SUPPLIER SHALL PROVIDE SUBMITTALS STAMPED BY AN ENGINEER LICENSED IN THE PROJECT JURISDICTION. MANUFACTURERS OF ALL EQUIPMENT REQUIRING SEISMIC RESTRAINT SHALL PROVIDE A CERTIFICATE OF COMPLIANCE TO THE SEISMIC ENGINEER FOR HIS REVIEW THAT THE EQUIPMENT WILL BE ABLE TO RESIST THE EXPECTED SEISMIC FORCES.

THIS PROJECT IS DETERMINED TO BE IN SEISMIC DESIGN CATEGORY - 'D'.

SEISMIC RESTRAINTS FOR FIRE PROTECTION SHOULD BE DESIGNED AND INSTALLED PER THE LATEST EDITION OF NFPA 13.

**GENERAL SEISMIC NOTES**

- SEISMIC RESTRAINTS SHALL BE PROVIDED ON ALL SUSPENDED MECHANICAL SYSTEMS/EQUIPMENT, AS WELL AS FLOOR MOUNTED MECHANICAL EQUIPMENT. RESTRAINTS AS MANUFACTURED BY MASON INDUSTRIES OR EQUAL. SEISMIC RESTRAINT CALCULATIONS SHALL BE SEALED BY THEIR REGISTERED ENGINEER AND SUBMITTED PRIOR TO APPROVAL AND INSTALLATION. MINIMUM DESIGN REQUIREMENTS PER SBC01 SECTION 1206, ASHRAE, SMACNA.
- SEISMIC RESTRAINTS SHALL BE PROVIDED ON ALL RECTANGULAR DUCT WITH A CROSS-SECTIONAL AREA GREATER THAN 6 SQUARE FEET AND LARGER, AND ALL ROUND DUCT 28" DIAMETER AND LARGER.
- ALL LAY-IN CEILING GRILLES, DIFFUSERS, AND EQUIPMENT SUSPENDED AT THE LAY-IN CEILING, SHALL BE PROVIDED WITH FOUR 12-GAUGE MIN. STEEL SUPPORT WIRES, TIED INDEPENDENTLY TO THE STRUCTURE. GRILLES, DIFFUSERS SHALL HAVE CEILING CLIPS PER ASTM E-580-91 REQUIREMENTS.
- SEISMIC RESTRAINTS ARE NOT REQUIRED FOR PIPING SYSTEMS WHERE:
  - PIPING SUSPENDED BY INDIVIDUAL HANGERS 12" OR LESS IN LENGTH FROM THE TOP OF THE PIPE TO THE SUPPORTING STRUCTURE.
  - PIPING IN BOILER AND MECHANICAL ROOM WHICH IS 1-1/4" INSIDE DIAMETER OR LESS.
  - PIPING IN OTHER AREAS WHICH IS 2-1/2" INSIDE DIAMETER OR LESS.
- SEISMIC RESTRAINTS ARE NOT REQUIRED FOR HVAC DUCTS WHERE:
  - DUCTS SUSPENDED BY HANGERS 12" OR LESS IN LENGTH FROM THE TOP OF THE DUCT TO THE SUPPORTING STRUCTURE.
  - DUCTS HAVING A CROSS-SECTIONAL AREA OF LESS THAN 6 SQUARE FEET.
- SEISMIC PIPING RESTRAINTS, WHERE REQUIRED, SHALL BE INSTALLED AT EACH HANGER AND AT EACH CHANGE OF DIRECTION. PIPE HANGER SPACING SHALL BE PER SPECIFICATIONS.
- PROVIDE FLEXIBLE JOINTS IN PIPES/HOSES AT SEISMIC BUILDING JOINTS AT PIPE/EQUIP. CONN. TO EQUIP., PER FLEXIBLE JOINT MFG. RECOMMENDATIONS AND PER PLANS.



**SHULTZ ENGINEERING GROUP**  
212 N. McDowell St  
Suite 204  
Charlotte, NC 28204  
(P) 704-334-7363  
(F) 704-347-0993  
www.shultzeng.com  
SEG-21-425

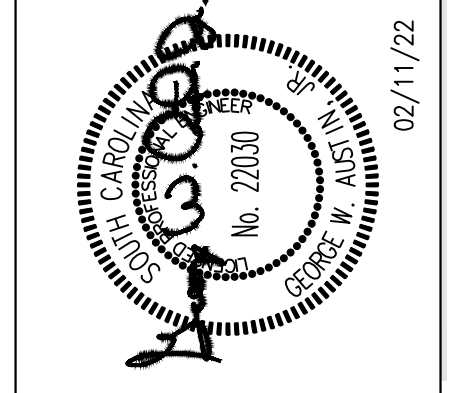
1925 Prospect Ave.  
Orlando, FL 32814  
P (407) 661-9100  
F (407) 661-9101  
www.cfp.com  
Florida Certified Professional Engineer No. 60005

**Chhaji & Peterson**  
Architects Engineers Planners

**FOOD LION**  
2110 EXECUTIVE DRIVE  
SALISBURY, NC 28145  
PH: 704-632-8250 FX: 704-632-4940

PROJECT NAME  
**FOOD LION #2857**  
1370 CHESTNUT ST., NE  
ORANGEBURG, SC 29115  
2857FLM122

SHEET TITLE  
**MECHANICAL DETAILS**



PROJECT NO.  
270866

DATE  
02/11/2022

DRAWN  
HMM

CHECKED  
CCC

2857M5.01\_00

**M5.01**

COPYRIGHT ©: All reports, plans, applications, contracts, fees, field data, notes and other documents are instruments of service prepared by Chhaji & Peterson, (C&P) an instrument of service under the authority of C&P, C&P Prof. Inc. - a common law, salisbury and other member firms. Any use or reproduction of this document without written permission of C&P is a violation of federal copyright laws.

