

FOR QUESTIONS, CALL THE
Highwoods Group
REGION 40
PHONE: (919) 875-0420
EMAIL: reg40@captiveaire.com

PATENT NUMBERS

AC-PSP (UNITED STATES) - US PATENT 7963830 B2.
AC-PSP WALL (CANADA) - CA PATENT 2820509.
AC-PSP ISLAND (CANADA) - CA PATENT 2520330.

HOOD INFORMATION - JOB#5747954

| HOOD NO | TAG | MODEL | MANUFACTURER | LENGTH | MAX COOKING TEMP | TYPE | APPLIANCE DUTY | DESIGN CFM/FT | TOTAL EXH CFM | EXHAUST PLENUM RISER(S) | | | | | MUA CFM | AC CFM | HOOD CONSTRUCTION | HOOD CONFIG | | |
|---------|-----|-------------------|--------------|--------|------------------|------|----------------|---------------|---------------|-------------------------|------|--------|------|------|---------|--------|-------------------|----------------------|-------|------------|
| | | | | | | | | | | WIDTH | LENG | HEIGHT | DIA | CFM | | | | VEL | SP | END TO END |
| 1 | | 5424 ND-2-ACPSP-F | CAPTIVEAIRE | 14' 3" | 600 DEG | I | HEAVY | 225 | 3200 | 10' | 15' | 4' | 1600 | 1536 | -0.854' | 2500 | 798 | 430 SS WHERE EXPOSED | ALONE | ALONE |

HOOD INFORMATION

| HOOD NO | TAG | FILTER(S) | | | | | LIGHT(S) | | | | | UTILITY CABINET(S) | | | FIRE SYSTEM PIPING | HOOD HANGING WEIGHT | |
|---------|-----|-----------------------|-----|--------|--------|------------------------|----------|----------------|------------|----------|-------------|--------------------|---------|--------------------|--------------------|---------------------|-------------------|
| | | TYPE | QTY | HEIGHT | LENGTH | EFFICIENCY @ 7 MICRONS | QTY | TYPE | WIRE GUARD | LOCATION | SIZE | FIRE SYSTEM TYPE | SIZE | ELECTRICAL MODEL # | | | SWITCHES QUANTITY |
| 1 | | CAPTRATE SOLID FILTER | 10 | 16" | 16" | 85% SEE FILTER SPEC | 10 | L55 SERIES E26 | ND | RIGHT | 12"x54"x24" | ANSUL R-102 | 3.0/3.0 | SC-31110MA | 1 LIGHT 1 FAN | YES | 1209 LBS |

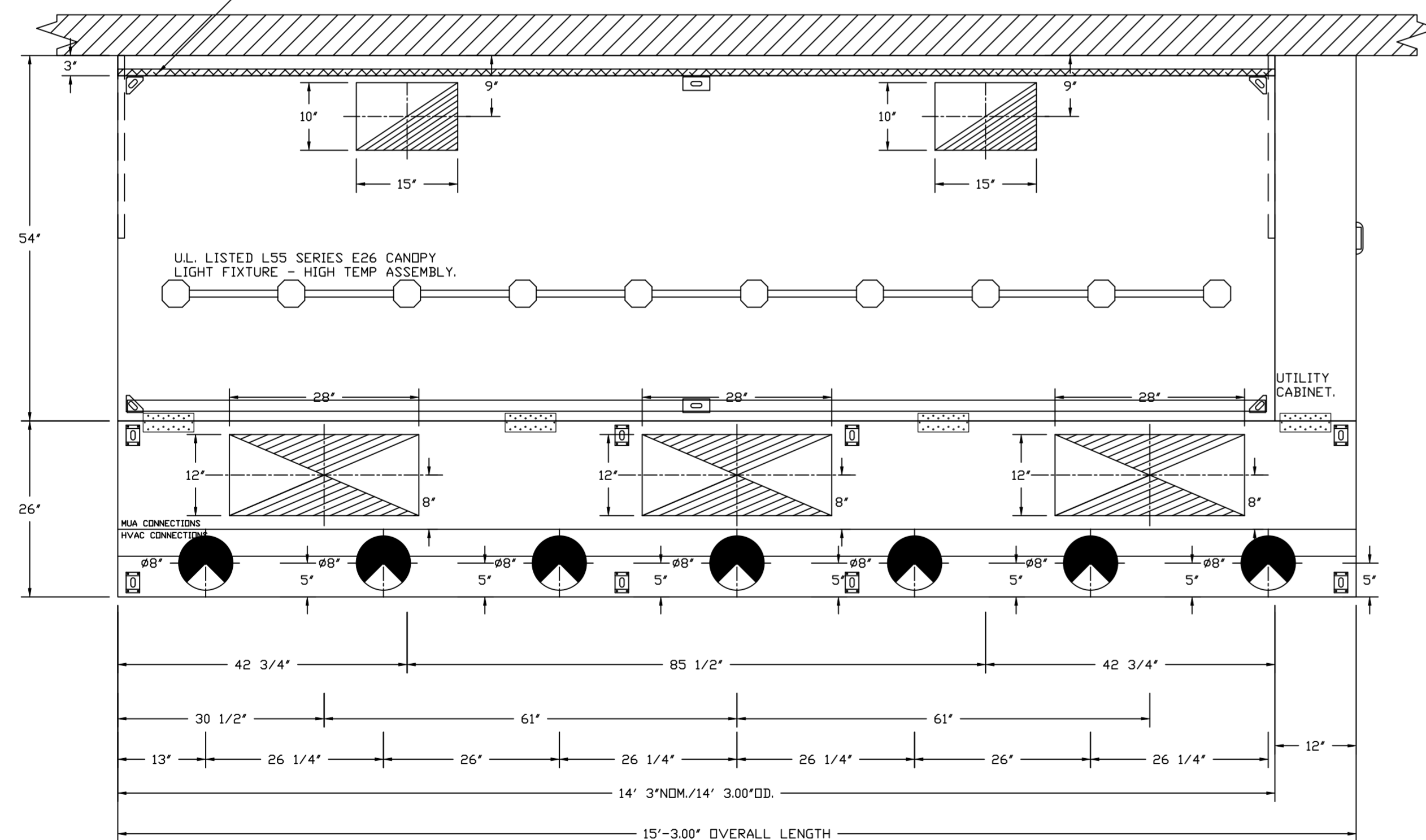
HOOD OPTIONS

| HOOD NO | TAG | OPTION |
|---------|-----|---|
| 1 | | FIELD WRAPPER 10.00' HIGH FRONT, LEFT, RIGHT. INSULATION FOR BACK OF HOOD. RISER SENSOR INSTALL 6IN PLEN. RIGHT VERTICAL END PANEL 27' TOP WIDTH, 21' BOTTOM WIDTH, 80' HIGH INSULATED 430 SS. LEFT VERTICAL END PANEL 27' TOP WIDTH, 21' BOTTOM WIDTH, 80' HIGH INSULATED 430 SS. FULL DIMENSION HANGING BRACKET - FRONT. |

PERFORATED SUPPLY PLENUM(S)

| HOOD NO | TAG | POS | LENGTH | WIDTH | HEIGHT | TYPE | RISER(S) | | | | |
|---------|-----|-------|--------|-------|--------|------|----------|------|-----|--------|--------|
| | | | | | | | WIDTH | LENG | DIA | CFM | SP |
| 1 | | Front | 183' | 26' | 6' | MUA | 12" | 28" | | 833 | 0.222' |
| | | | | | | MUA | 12" | 28" | | 833 | 0.222' |
| | | | | | | MUA | 12" | 28" | | 833 | 0.222' |
| | | | | | | AC | | 8" | 114 | 0.041' | |
| | | | | | | AC | | 8" | 114 | 0.041' | |
| | | | | | | AC | | 8" | 114 | 0.041' | |
| | | | | | | AC | | 8" | 114 | 0.041' | |
| | | | | | | AC | | 8" | 114 | 0.041' | |
| | | | | | | AC | | 8" | 114 | 0.041' | |
| | | | | | | AC | | 8" | 114 | 0.041' | |

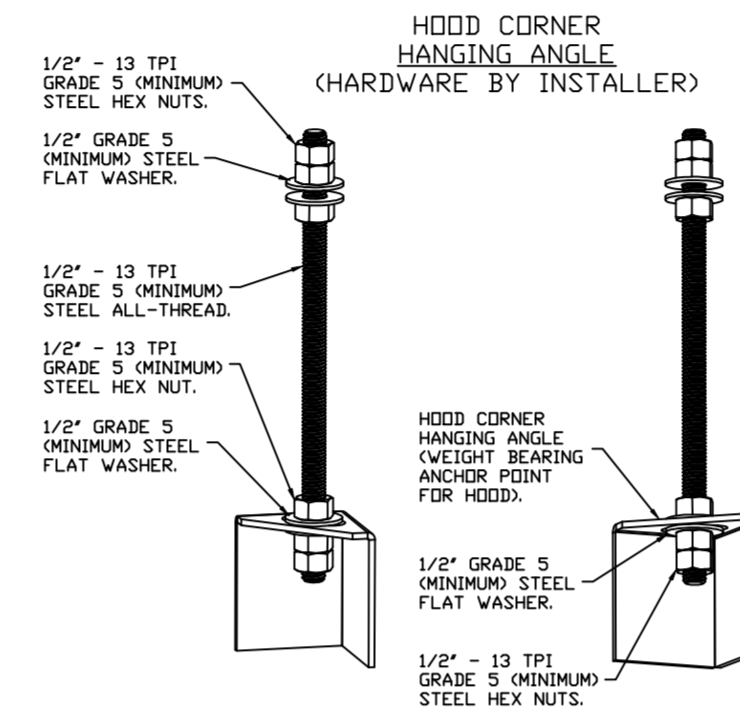
1" LAYER OF INSULATION FACTORY INSTALLED IN INTERNAL BACK STANDOFF. MEETS 0 INCH REQUIREMENTS FOR CLEARANCE TO COMBUSTIBLE SURFACES.



PLAN VIEW - HOOD #1

14' 3.00" LONG 5424ND-2-ACPSP-F
NOTE: ADDITIONAL HANGING ANGLES PROVIDED FOR HOODS 12' AND LONGER.

ACPSP SHIPS LOOSE FOR FIELD INSTALLATION



ASSEMBLY INSTRUCTIONS

HANGING ANGLE MUST BE SUPPORTED WITH 1/2" - 13 TPI GRADE 5 (MINIMUM) ALL-THREAD. SANDWICH HANGING ANGLES AND CEILING ANCHOR POINTS WITH 1/2" GRADE 5 (MINIMUM) STEEL FLAT WASHERS AND 1/2" - 13 TPI GRADE 5 (MINIMUM) HEX NUTS AS SHOWN. MUST USE DOUBLED HEX NUT CONFIGURATION BENEATH HOOD HANGING ANGLES AND ABOVE CEILING ANCHORS. MAINTAIN 1/4" OF EXPOSED THREADS BENEATH BOTTOM HEX NUT. TORQUE ALL HEX NUTS TO 57 FT-LBS.

SPECIFICATION: CAPTRATE® GREASE-STOP® SOLID FILTER

THE CAPTRATE GREASE-STOP SOLID FILTER IS A SINGLE-STAGE FILTER FEATURING A UNIQUE S-BAFFLE DESIGN IN CONJUNCTION WITH A SLOTTED REAR BAFFLE DESIGN, TO DELIVER EXCEPTIONAL FILTRATION EFFICIENCY.

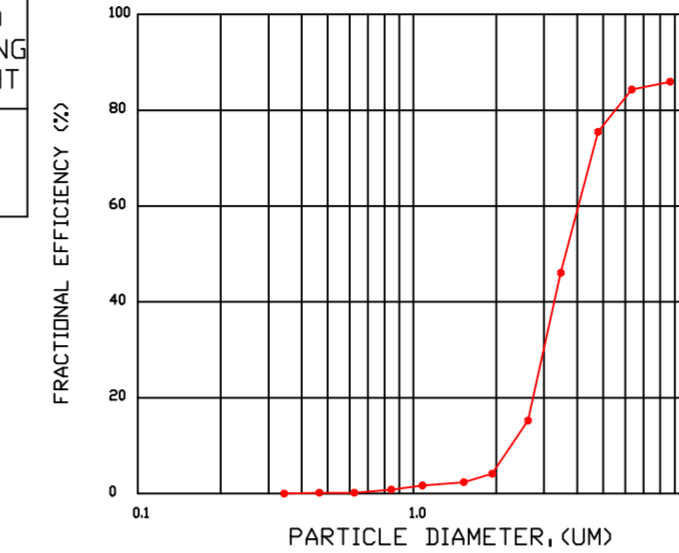
FILTER IS STAINLESS STEEL CONSTRUCTION, AND SIZED TO FIT INTO STANDARD 2-INCH DEEP HOOD CHANNEL(S).

UNITS SHALL INCLUDE STAINLESS STEEL HANDLES AND A FASTENING DEVICE TO SECURE THE TWO COMPONENTS WHEN ASSEMBLED.

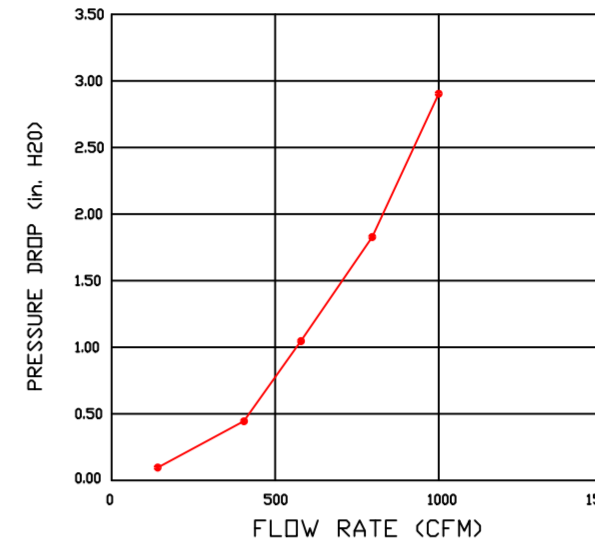
GREASE EXTRACTION EFFICIENCY PERFORMANCE SHALL REMOVE AT LEAST 75% OF GREASE PARTICLES FIVE MICRONS IN SIZE, AND 85% GREASE PARTICLES SEVEN MICRONS IN SIZE AND LARGER, WITH A CORRESPONDING PRESSURE DROP NOT TO EXCEED 1.0 INCHES OF WATER GAUGE.

THE CAPTRATE GREASE-STOP SOLID WAS TESTED TO ASTM STANDARD ASTM F2519-05, MANUFACTURER APPROVED FOR USE IN SOLID FUEL APPLICATIONS AS A SPARK ARRESTER.

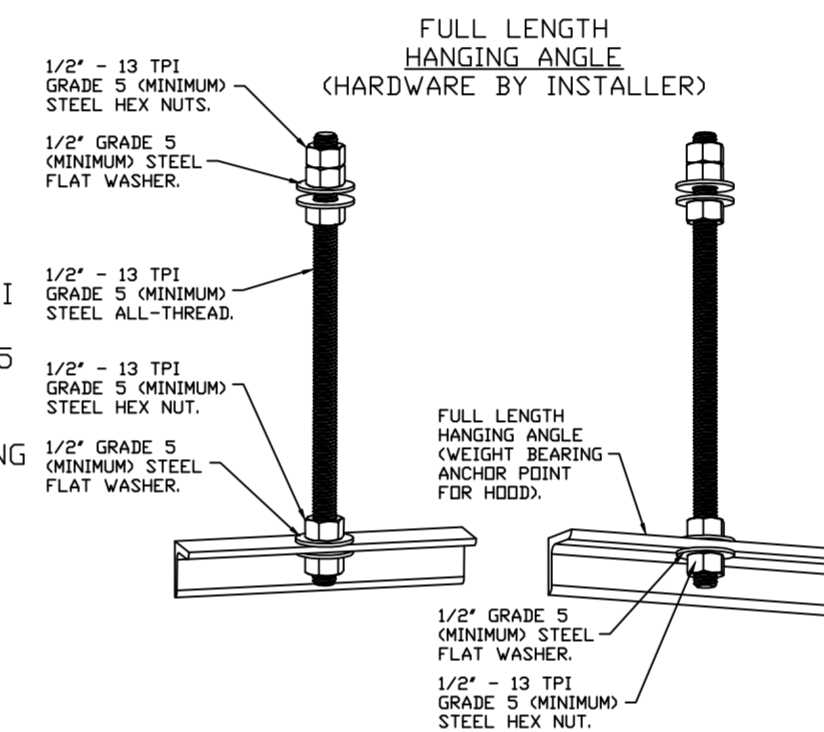
EFFICIENCY VS. PARTICLE DIAMETER



PRESSURE DROP VS. FLOW RATE

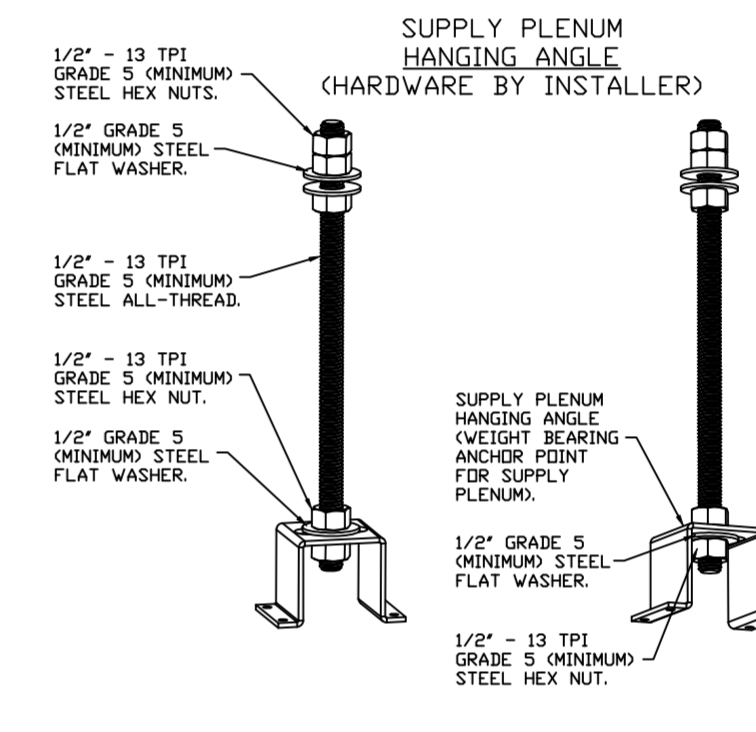


CAPTRATE FILTERS ARE BUILT IN COMPLIANCE WITH:
NFPA #96.
NSF STANDARD #2.
UL STANDARD #1046.
INT. MECH. CODE (IMC).
ULC-S649.



ASSEMBLY INSTRUCTIONS

HANGING ANGLE MUST BE SUPPORTED WITH 1/2" - 13 TPI GRADE 5 (MINIMUM) ALL-THREAD. SANDWICH HANGING ANGLES AND CEILING ANCHOR POINTS WITH 1/2" GRADE 5 (MINIMUM) STEEL FLAT WASHERS AND 1/2" - 13 TPI GRADE 5 (MINIMUM) HEX NUTS AS SHOWN. MUST USE DOUBLED HEX NUT CONFIGURATION ABOVE CEILING ANCHORS. SINGLE HEX NUT BENEATH HANGING ANGLE IS ACCEPTABLE FOR FULL LENGTH HANGING ANGLES. MAINTAIN 1/4" OF EXPOSED THREADS BENEATH BOTTOM HEX NUT. TORQUE ALL HEX NUTS TO 57 FT-LBS.

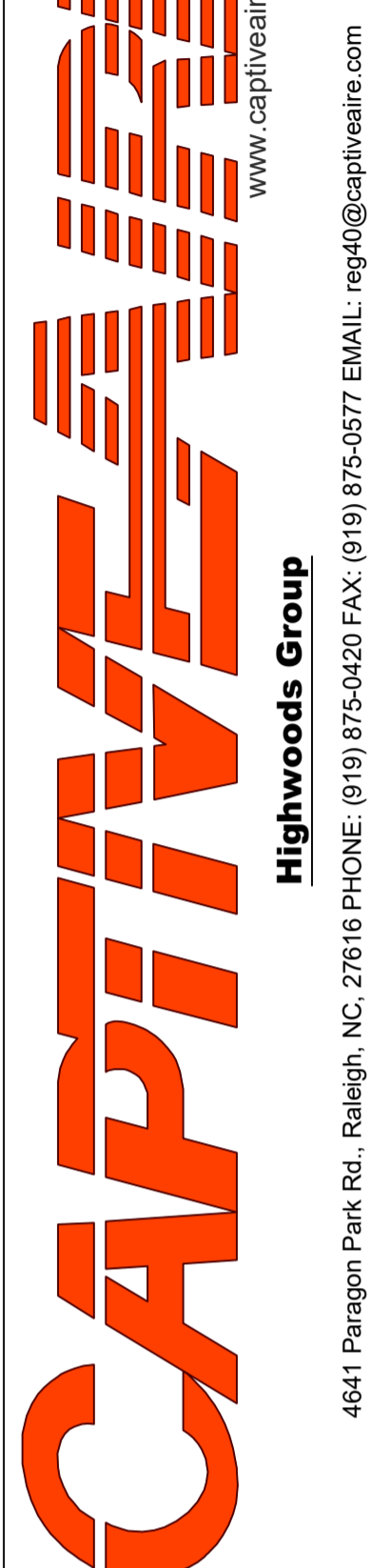
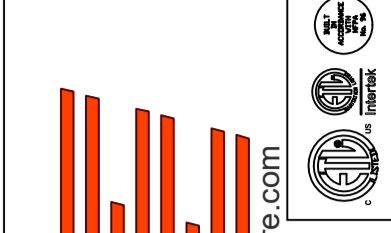


ASSEMBLY INSTRUCTIONS

HANGING ANGLE MUST BE SUPPORTED WITH 1/2" - 13 TPI GRADE 5 (MINIMUM) ALL-THREAD. SANDWICH HANGING ANGLES AND CEILING ANCHOR POINTS WITH 1/2" GRADE 5 (MINIMUM) STEEL FLAT WASHERS AND 1/2" - 13 TPI GRADE 5 (MINIMUM) HEX NUTS AS SHOWN. MUST USE DOUBLED HEX NUT CONFIGURATION ABOVE CEILING ANCHORS. SINGLE HEX NUT BENEATH HANGING ANGLE IS ACCEPTABLE FOR PSP HANGING ANGLES. MAINTAIN 1/4" OF EXPOSED THREADS BENEATH BOTTOM HEX NUT. TORQUE ALL HEX NUTS TO 57 FT-LBS.

REVISIONS

| DESCRIPTION | DATE |
|-------------|------|
| | |
| | |
| | |
| | |



CHIPOTLE LEASIDE #4733
101 LAIRD DRIVE,
TORONTO, ON, M4G 3T7

DATE: 4/20/2023

DWG.#:
5747954

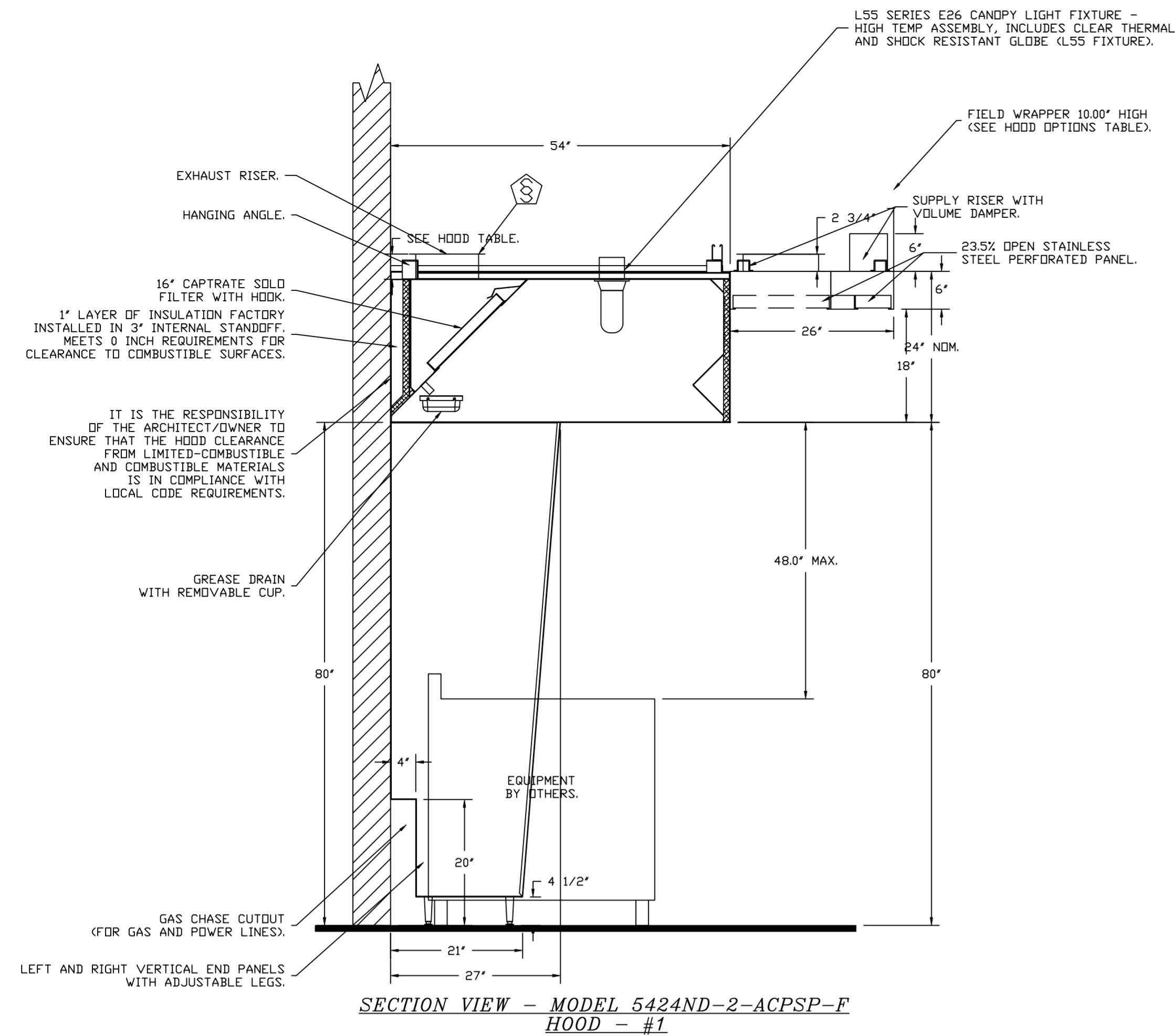
DRAWN BY:
JMB-40

SCALE:
3/4" = 1'-0"

MASTER DRAWING

SHEET NO.
1

Highwoods Group
4641 Paragon Park Rd., Raleigh, NC, 27616 PHONE: (919) 875-0420 FAX: (919) 875-0577 EMAIL: reg40@captiveaire.com



FIRE SYSTEM INFORMATION - JOB#5747954

| FIRE SYSTEM NO | TAG | TYPE | SIZE | FLOW POINTS | INSTALLATION | |
|----------------|-----|------------|---------|-------------|--------------------|------------------|
| | | | | | SYSTEM | LOCATION ON HOOD |
| 1 | | ANSUL R102 | 3.0/3.0 | 4 | FIRE CABINET RIGHT | RIGHT, HOOD 1 |

GAS VALVE(S)

| FIRE SYSTEM NO | TAG | TYPE | SIZE | SUPPLIED BY |
|----------------|-----|------------|-------|---------------------|
| 1 | | MECHANICAL | 1.500 | CAPTIVEAIRE SYSTEMS |

SYSTEM DESIGN VERIFICATION (SDV)

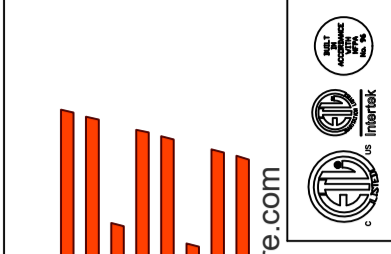
IF ORDERED, CAS SERVICE WILL PERFORM A SYSTEM DESIGN VERIFICATION (SDV) ONCE ALL EQUIPMENT HAS HAD A COMPLETE START UP PER THE OPERATION AND INSTALLATION MANUAL. TYPICALLY, THE SDV WILL BE PERFORMED AFTER ALL INSPECTIONS ARE COMPLETE.

ANY FIELD RELATED DISCREPANCIES THAT ARE DISCOVERED DURING THE SDV WILL BE BROUGHT TO THE ATTENTION OF THE GENERAL CONTRACTOR AND CORRESPONDING TRADES ON SITE. THESE ISSUES WILL BE DOCUMENTED AND FORWARDED TO THE APPROPRIATE SALES OFFICE. IF CAS SERVICE HAS TO RESOLVE A DISCREPANCY THAT IS A FIELD ISSUE, THE GENERAL CONTRACTOR WILL BE NOTIFIED AND BILLED FOR THE WORK. SHOULD A RETURN TRIP BE REQUIRED DUE TO ANY FIELD RELATED DISCREPANCY THAT CANNOT BE RESOLVED DURING THE SDV, THERE WILL BE ADDITIONAL TRIP CHARGES.

DURING THE SDV, CAS SERVICE WILL ADDRESS ANY DISCREPANCY THAT IS THE FAULT OF THE MANUFACTURER. SHOULD A RETURN TRIP BE REQUIRED, THE GENERAL CONTRACTOR AND APPROPRIATE SALES OFFICE WILL BE NOTIFIED. THERE WILL BE NO ADDITIONAL CHARGES FOR MANUFACTURER DISCREPANCIES.

REVISIONS

| DESCRIPTION | DATE |
|-------------|------|
| | |
| | |
| | |
| | |



CAPTIVE AIR
Highwoods Group
www.captiveaire.com
4641 Paragon Park Rd., Raleigh, NC 27616 PHONE: (919) 875-0420 FAX: (919) 875-0577 EMAIL: reg@captivair.com

CHIPOTLE LEASIDE #4733
101 LAIRD DRIVE,
TORONTO, ON, M4G 3T7

DATE: 4/20/2023

DWG.#: 5747954

DRAWN BY: JMB-40

SCALE: 3/4" = 1'-0"

MASTER DRAWING

SHEET NO. 2

EXHAUST FAN INFORMATION - JOB#5747954

| FAN UNIT NO | TAG | QTY | FAN UNIT MODEL # | MANUFACTURER | CFM | ESP | RPM | MOTOR ENCL | HP | BHP | PHASE | VOLT | FLA | DISCHARGE VELOCITY | WEIGHT (LBS) | SONES |
|-------------|------|-----|------------------|--------------|------|-------|-----|--------------|-------|--------|-------|------|-----|--------------------|--------------|-------|
| 1 | EF-1 | 1 | DU240HFA | CAPTIVEAIRE | 3200 | 1.500 | 858 | TEFC,PREMIUM | 3.000 | 1.6910 | 3 | 575 | 3.5 | 727 FPM | 348 | 14.3 |

MUA FAN INFORMATION - JOB#5747954

| FAN UNIT NO | TAG | QTY | FAN UNIT MODEL # | BLOWER | HOUSING | MIN CFM | DESIGN CFM | ESP | RPM | MOTOR ENCL | HP | BHP | PHASE | VOLT | FLA | MCA | MOCF | WEIGHT (LBS) | SONES |
|-------------|-------|-----|------------------|------------|----------|---------|------------|-------|------|-------------|-------|--------|-------|------|-----|------|------|--------------|-------|
| 2 | MAU-1 | 1 | A2-D.250-20D | 20MF-2-MDD | A2-D.250 | 2000 | 2500 | 0.500 | 1109 | DDP,PREMIUM | 2.000 | 0.7050 | 3 | 575 | 2.1 | 3.1A | 15A | 662 | 8.3 |

GAS FIRED MAKE-UP AIR UNIT(S)

| FAN UNIT NO | TAG | INPUT BTUs | OUTPUT BTUs | TEMP RISE | REQUIRED INPUT GAS PRESSURE | GAS TYPE | BURNER EFFICIENCY(%) |
|-------------|-------|------------|-------------|-----------|-----------------------------|----------|----------------------|
| 2 | MAU-1 | 294960 | 271363 | 110°F | 7 IN. W.C. - 14 IN. W.C. | NATURAL | 92 |

DOAS/RTU FAN SCHEDULE - JOB#5747954

| FAN UNIT NO | TAG | QTY | DOAS/RTU MODEL # | MANUFACTURER | ELECTRICAL INFORMATION | | | | | | | | | | COOLING INFORMATION | | | | | REHEAT INFORMATION | | | | GAS HEAT INFORMATION | | | | NOTES | | | | | | | |
|-------------|--------------|-----|---------------------|--------------|------------------------|----------------|---------------------|-----------|--------------|-------|------|-------|------|-------|---------------------|----------------|----------------|----------------|----------------|--------------------|----------|----------|------|----------------------|--------------|--------------|------------------|--------|--------------|-----------------------|----------|------------|-------------|--------------------------|-------------------------------------|
| | | | | | BLOWER | RETURN AIR CFM | MAX OUTSIDE AIR CFM | TOTAL CFM | WEIGHT (LBS) | ESP | HP | PHASE | VOLT | MCA | MOCF | OUTSIDE AIR DB | OUTSIDE AIR WB | LEAVING AIR DB | LEAVING AIR WB | LEAVING AIR DP | TOTAL | SENS. | IEER | ISMRE | DISCHARGE DB | DISCHARGE WB | CAPACITY DESIRED | | CAPACITY MAX | MOISTURE REMOVAL RATE | GAS TYPE | INPUT BTUs | OUTPUT BTUs | TEMP RISE | REQUIRED INPUT GAS PRESSURE |
| 3 | 1200 CFM MUA | 1 | CASRTU1-I.150-13-5T | CAPTIVEAIRE | 13P-1 | 0 | 1200 | 1200 | 1417 | 0.500 | 1.00 | 3 | 575 | 11.3A | 15A | 80.5°F | 73.9°F | 58.8°F | 57.6°F | 56.9°F | 66.0 MBH | 27.8 MBH | 17.9 | 6.1 | 70.0°F | 61.8°F | 14.8 MBH | 53 MBH | 34.6 LBS/HR | NATURAL | 130389 | 105615 | 72°F | 7 IN. W.C. - 14 IN. W.C. | 1,2,3,4,5,6,7,8,9,10,11,12,13,14,15 |

NOTES:

1. INVERTER SCROLL COMPRESSOR WITH INTEGRATED OIL SENSOR. DIGITAL OR STAGED SCROLL NOT AN APPROVED EQUAL
2. DIRECT DRIVE PLENUM BLOWER. BELT DRIVEN BLOWERS ARE NOT ACCEPTABLE
3. INTEGRATED MONITORING VIA CELLULAR CONNECTION BY MANUFACTURER
4. REFRIGERATION PRESSURE MONITORING ON HIGH AND LOW PRESSURE SIDE OF SYSTEM INCLUDED THROUGH DIGITAL INTERFACE
5. EC MOTOR CONDENSING FANS
6. ELECTRONIC EXPANSION VALVE. TXV NOT ACCEPTABLE
7. SUCTION LINE ACCUMULATOR
8. FACTORY COMMISSIONING WITH 5 YEAR PARTS WARRANTY, 25 YEAR WARRANTY ON STAINLESS STEEL HEAT EXCHANGER
9. AVERAGING INTAKE, EVAP AND DISCHARGE TEMPERATURE SENSORS (DISCHARGE SENSOR TO BE FACTORY MOUNTED WITHIN UNIT)
10. 81% EFFICIENT FURNACE, WITH MODULATING INDUCER TO MAINTAIN CONSTANT COMBUSTION EFFICIENCY ACROSS FIRING RANGE. 6:1 TURNDOWN WITH NG AND 5:1 TURNDOWN WITH LP
11. SUPPLY CFM MONITORING INTEGRAL TO UNIT WITH CFM MEASUREMENT INCLUDED THROUGH DIGITAL INTERFACE
12. FULLY MODULATING HOT GAS REHEAT
13. HAIL GUARD FOR CONDENSING COIL
14. 1" EXTERIOR DUAL-WALL CONSTRUCTION W/ R-4.3 INSULATION-MINIMUM 24GA EXTERIOR W/ 18GA BASE
15. DOWN DISCHARGE/NO RETURN

FAN OPTIONS

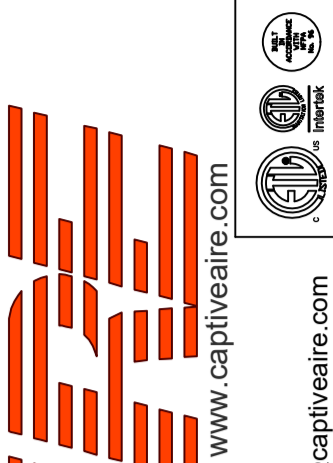
| FAN UNIT NO | TAG | QTY | DESCRIPTION |
|-------------|--|-----|--|
| 1 | EF-1 | 1 | GREASE BOX |
| | | 1 | REMOVE HINGE KIT LABEL FROM THE FAN BASE |
| | | 1 | LOAD REACTOR MOUNTED IN FAN |
| | | 1 | 2 YEAR PARTS WARRANTY |
| 2 | MAU-1 | 1 | SIZE 2 TEMPERED COMMERCIAL DOWN DISCHARGE FOR DIRECT DRIVE AHUS |
| | | 1 | INLET PRESSURE GAUGE, 0-35" |
| | | 1 | MANIFOLD PRESSURE GAUGE, -5 TO 15" WC |
| | | 1 | BUTTERFLY MOD VALVE OPTION FOR MOD SIZE 2 (1" MOD VALVE) |
| | | 1 | SHIP LOOSE GAS STRAINER 1" |
| | | 1 | UPSTREAM PILOT FOR SIZES 1-3 |
| | | 1 | MOTORIZED BACKDRAFT DAMPER FOR A2-D HOUSING - MEETS AMCA CLASS 1A RATING |
| | | 1 | SIZE 2 DIRECT FIRED HEATER LOW CFM PROFILE PACKAGE - USED ON HEATERS UNDER 2500 CFM |
| | | 1 | LOAD REACTOR MOUNTED IN FAN |
| | | 1 | UNIT MOUNTED VFD FOR USE WITH ECPM03 |
| 3 | 1200 CFM MUA | 1 | 2 YEAR PARTS WARRANTY |
| | | 1 | INLET PRESSURE GAUGE, 0-35" |
| | | 1 | MANIFOLD PRESSURE GAUGE, 0 TO 10" WC, 1 FURNACE |
| | | 1 | SHIP LOOSE GAS STRAINER 3/4" |
| | | 1 | SINGLE POINT ELECTRICAL CONNECTION FOR RTU. 750VA TRANSFORMER USED. IF A NON-DCV PREWIRE CONTROLS THIS UNIT, THE #28, #47, "MA", OR "E2" PREWIRE OPTION MUST BE SELECTED. DOES NOT PROVIDE SUPPLY STARTER IN PREWIRE |
| | | 1 | CASLINK BUILDING MONITORING SYSTEM - INTERNET OR CELLULAR CONNECTION REQUIRED |
| | | 1 | 2" MERV 13 FILTERS FOR RTU1 (QTY. 4) |
| | | 1 | 2" MERV 8 FILTERS FOR RTU1 (QTY. 4) |
| | | 1 | OVERHEAT STAT |
| | | 1 | VFD FACTORY MOUNTED AND WIRED IN RTU COMMERCIAL CONTROL VESTIBULE |
| | | 1 | RTU1 DOWN DISCHARGE |
| | | 1 | RTU FIXED 100% OA INTAKE CONTROL |
| | | 1 | RTU NO RETURN - 100% OA |
| | | 1 | REMOTE TEMPERATURE AND HUMIDITY SPACE SENSOR |
| | | 1 | OCCUPIED SCHEDULING |
| | | 1 | RTU1 CURB DUCT HANGER |
| | | 1 | DUCT MOUNTED SMOKE DETECTOR - SHIPS LOOSE |
| | | 1 | CONTROL PANEL ENCLOSURE HEATER - RECOMMENDED FOR WINTER DESIGN TEMPERATURES LESS THAN 0°F |
| | | 1 | CLOGGED FILTER SWITCH - NOTIFICATION ON HMI |
| | | 1 | RTU1 CONVENIENCE OUTLET (GFCI), 15 AMP - REQUIRES SEPARATE 120V CONNECTION. INCLUDES RECEPTACLE, COVER AND J BOX |
| | | 1 | 5 TON MODULATING COOLING OPTION, 575/600V. R410A REFRIGERANT, VARIABLE SPEED COMPRESSOR, ECM CONDENSING FAN |
| | | 1 | 5 TON MODULATING REHEAT OPTION - DISCHARGE DEWPOINT CONTROL |
| | | 1 | RTU SIZE 1 INTAKE HOOD, SHIPPED LOOSE |
| 1 | RTU1 HAIL GUARD | | |
| 1 | VAV PACKAGE W/ MANUAL/DDC CONTROL (571 VFD INCLUDED) | | |
| 1 | LOAD REACTOR MOUNTED IN FAN | | |
| 1 | 5 YEAR ENTIRE UNIT PARTS WARRANTY, 10 YEAR ENTIRE UNIT PARTS WARRANTY WITH REMOTE MONITORING AND CAPTIVEAIRE SERVICE CONTRACT, 25 YEAR STAINLESS STEEL FURNACE PARTS WARRANTY (SEE ADDITIONAL DETAILS) | | |

FAN ACCESSORIES

| FAN UNIT NO | TAG | EXHAUST | | | SUPPLY | | | |
|-------------|-------|------------|----------------|------------|----------------|----------------|------------------|------------|
| | | GREASE CUP | GRAVITY DAMPER | WALL MOUNT | SIDE DISCHARGE | GRAVITY DAMPER | MOTORIZED DAMPER | WALL MOUNT |
| 1 | EF-1 | YES | | | | | | |
| 2 | MAU-1 | | | | | | YES | |

REVISIONS

| DESCRIPTION | DATE |
|-------------|------|
| | |
| | |
| | |
| | |



CHIPOTLE LEASIDE #4733
101 LAIRD DRIVE,
TORONTO, ON, M4G 3T7

DATE: 4/20/2023

DWG.#:
5747954

DRAWN BY: JMB-40

SCALE:
3/4" = 1'-0"

MASTER DRAWING

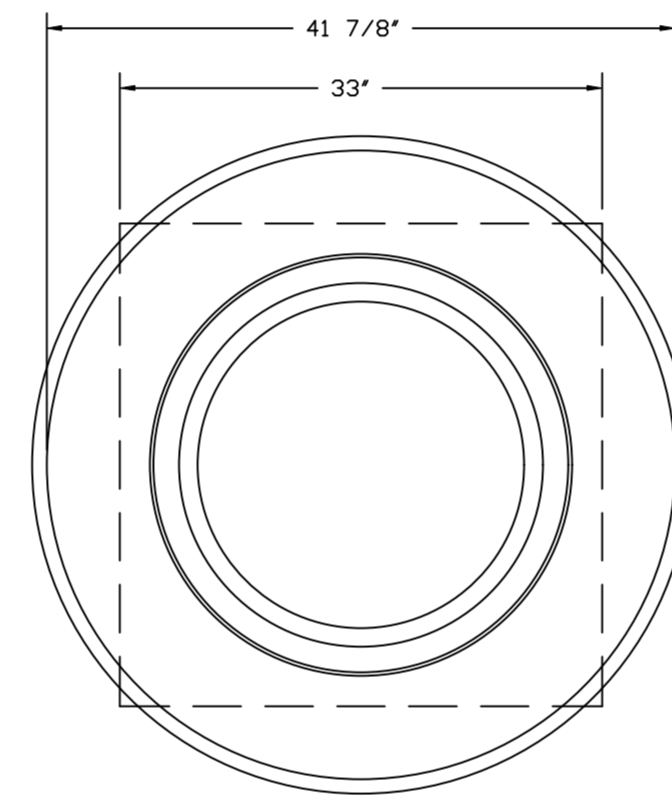
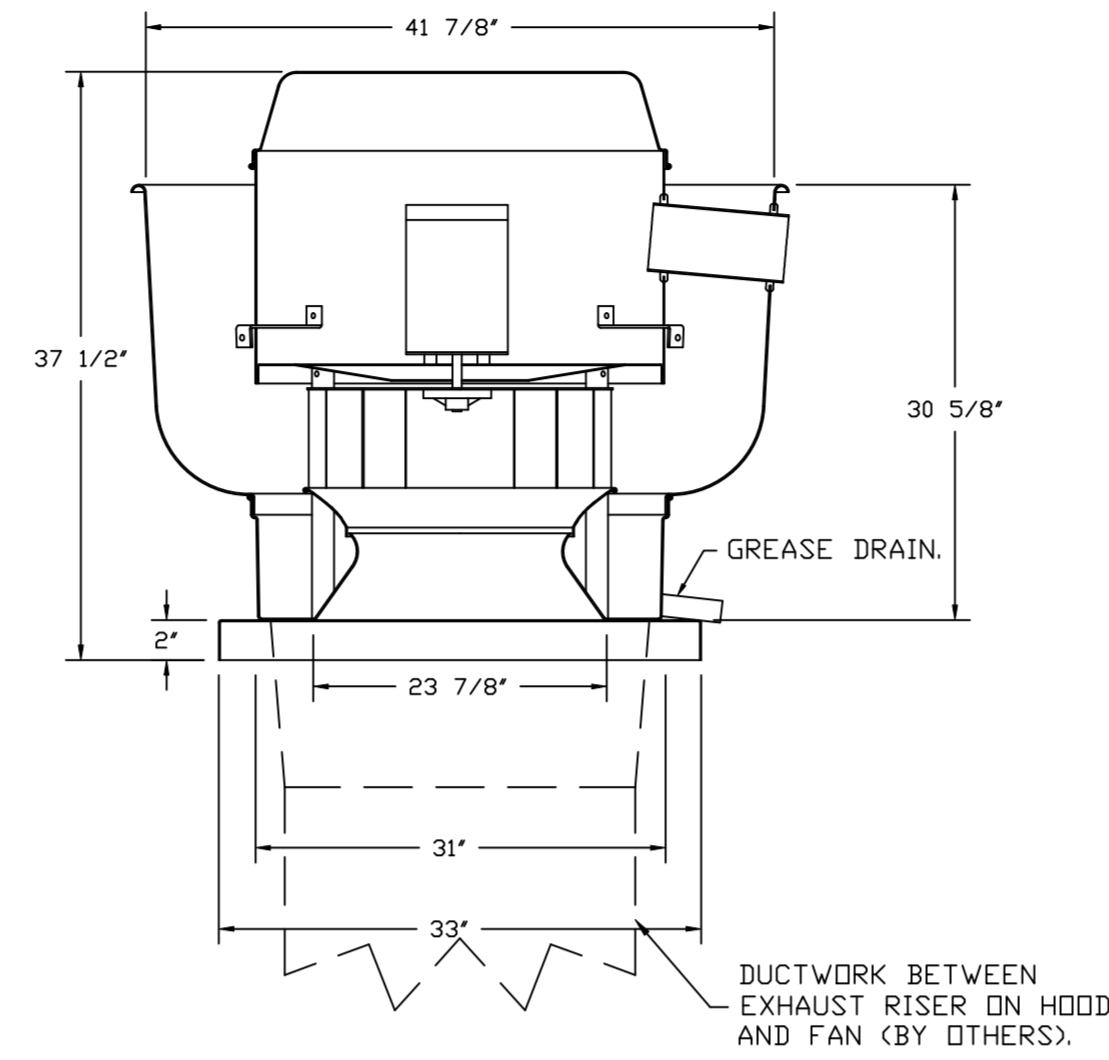
SHEET NO.
3

4441 Paragon Park Rd., Raleigh, NC. 27616 PHONE: (919) 875-0420 FAX: (919) 875-0577 EMAIL: reg10@captiveair.com

CURB ASSEMBLIES

| NO | ON FAN | TAG | WEIGHT | ITEM | SIZE |
|----|--------|--------------|---------|------|--|
| 1 | # 1 | EF-1 | 43 LBS | CURB | 31.500"W X 31.500"L X 20.000"H ALONG LENGTH, RIGHT VENTED. |
| 2 | # 2 | MAU-1 | 80 LBS | CURB | 31.000"W X 79.000"L X 20.000"H ALONG WIDTH, RIGHT INSULATED. |
| 3 | # 3 | 1200 CFM MUA | 103 LBS | CURB | 41.000"W X 71.000"L X 20.000"H ALONG WIDTH, RIGHT INSULATED. |

FAN #1 DU240HFA - EXHAUST FAN (EF-1)



TOP VIEW

FEATURES:

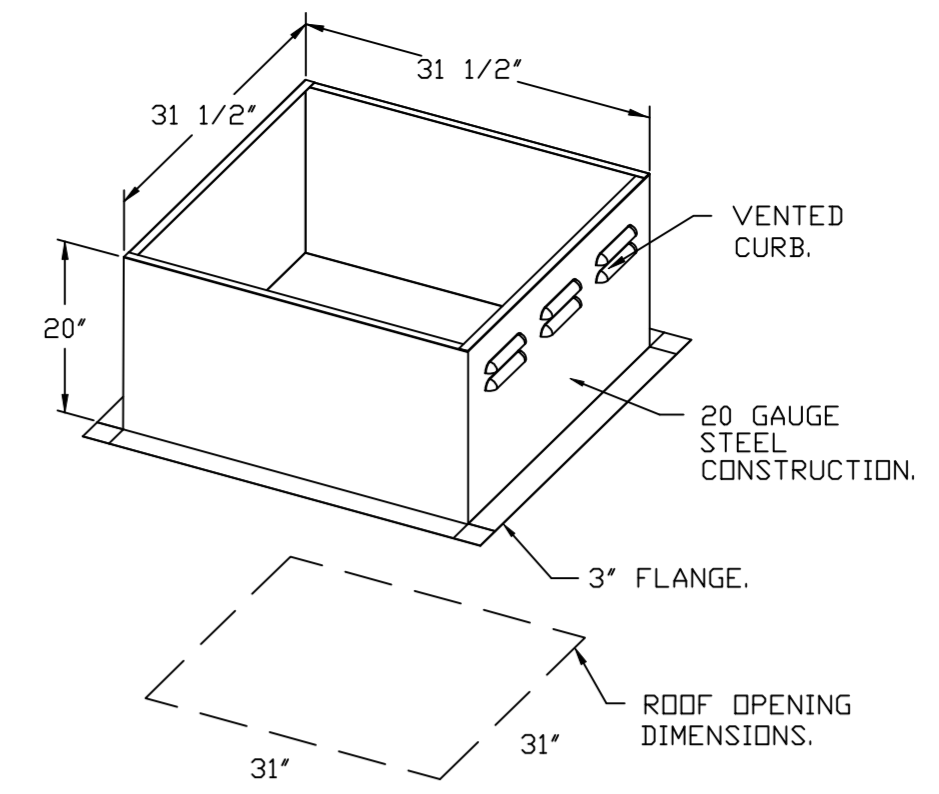
- DIRECT DRIVE CONSTRUCTION (NO BELTS/PULLEYS).
- ROOF MOUNTED FANS.
- RESTAURANT MODEL.
- UL705 AND UL762 AND ULC-S645
- VARIABLE SPEED CONTROL.
- INTERNAL WIRING.
- THERMAL OVERLOAD PROTECTION (SINGLE PHASE).
- HIGH HEAT OPERATION 300°F (149°C).
- GREASE CLASSIFICATION TESTING.
- NEMA 3R SAFETY DISCONNECT SWITCH.

NORMAL TEMPERATURE TEST
EXHAUST FAN MUST OPERATE CONTINUOUSLY WHILE EXHAUSTING AIR AT 300°F (149°C) UNTIL ALL FAN PARTS HAVE REACHED THERMAL EQUILIBRIUM, AND WITHOUT ANY DETERIORATING EFFECTS TO THE FAN WHICH WOULD CAUSE UNSAFE OPERATION.

ABNORMAL FLARE-UP TEST
EXHAUST FAN MUST OPERATE CONTINUOUSLY WHILE EXHAUSTING BURNING GREASE VAPORS AT 600°F (316°C) FOR A PERIOD OF 15 MINUTES WITHOUT THE FAN BECOMING DAMAGED TO ANY EXTENT THAT COULD CAUSE AN UNSAFE CONDITION.

OPTIONS

- GREASE BOX.
- REMOVE HINGE KIT LABEL FROM THE FAN BASE.
- LOAD REACTOR MOUNTED IN FAN.
- 2 YEAR PARTS WARRANTY.



REVISIONS

| DESCRIPTION | DATE: |
|-------------|-------|
| | |
| | |
| | |
| | |

CAPTIVE

Highwoods Group

4641 Paragon Park Rd., Raleigh, NC, 27616 PHONE: (919) 875-0420 FAX: (919) 875-0577 EMAIL: reg@captiveware.com

www.captiveware.com

CHIPOTLE LEASIDE #4733
101 LAIRD DRIVE,
TORONTO, ON, M4G 3T7

DATE: 4/20/2023

DWG.#:
5747954

DRAWN BY: JMB-40

SCALE:
3/4" = 1'-0"

MASTER DRAWING

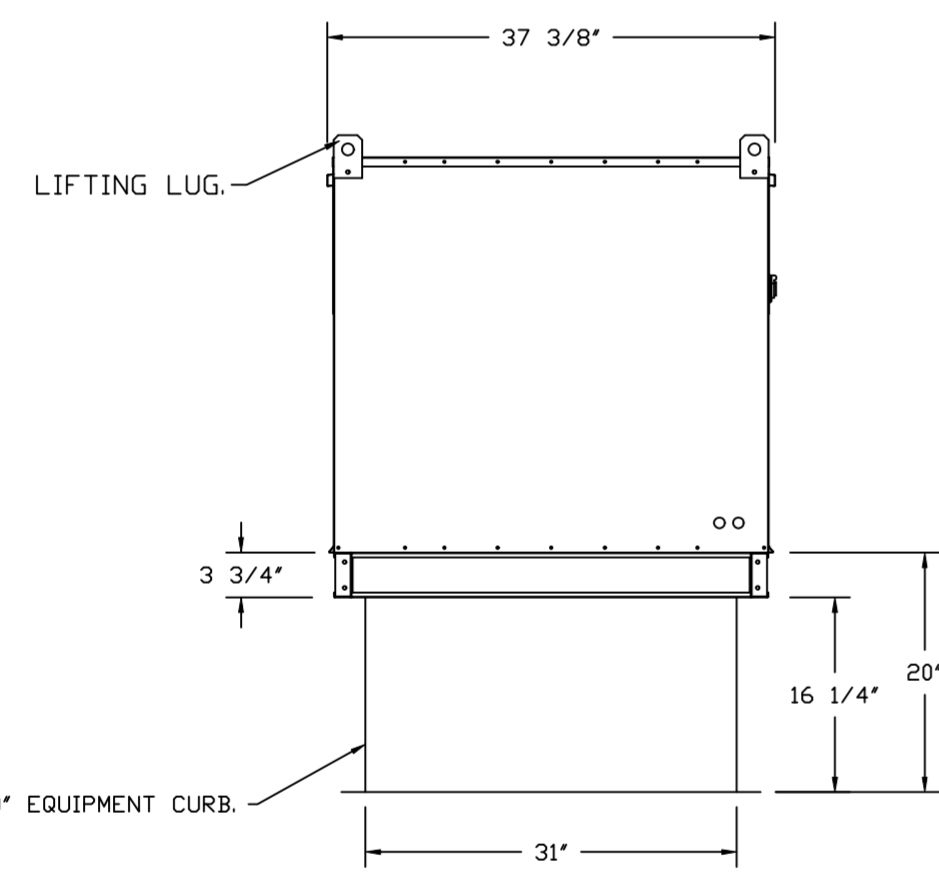
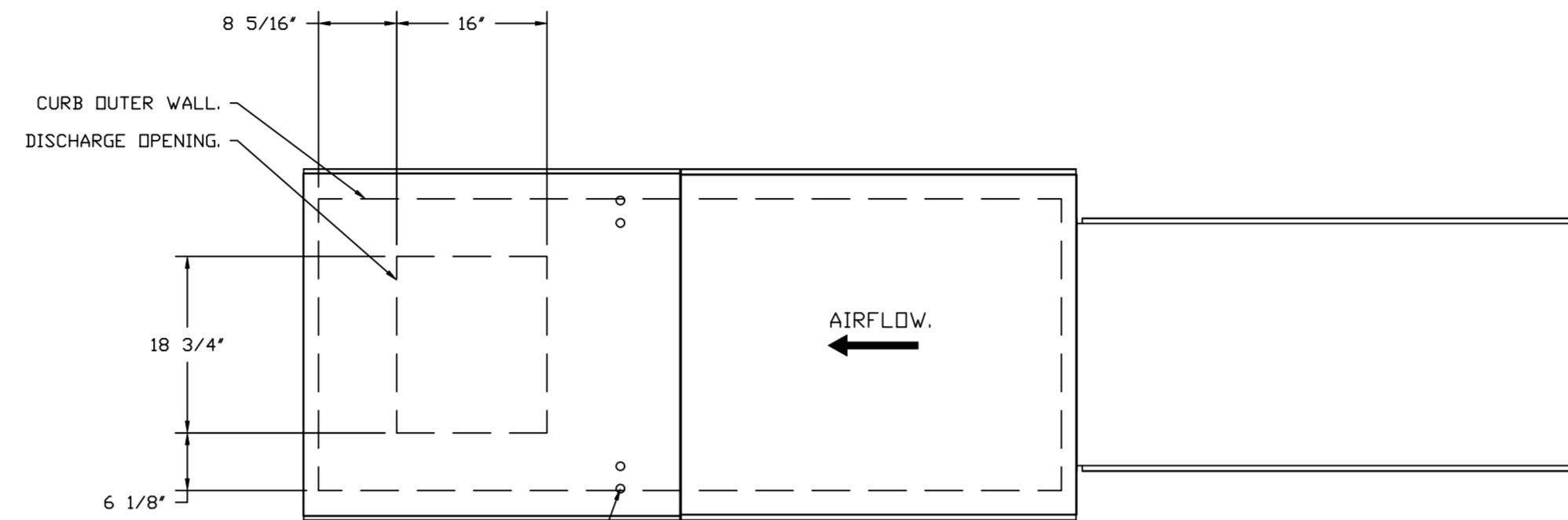
SHEET NO.
4

- FAN #2 A2-D250-20D - HEATER (MAU-1)
1. DIRECT GAS FIRED HEATED MAKE UP AIR UNIT WITH 20" MIXED FLOW DIRECT DRIVE FAN.
 2. INTAKE HOOD WITH EZ FILTERS.
 3. DOWN DISCHARGE - AIR FLOW RIGHT -> LEFT.
 4. DOWN DISCHARGE CONSTRUCTION FOR SIZE 2 DIRECT DRIVE AHUS.
 5. GAS PRESSURE GAUGE, 0-35", 2.5" DIAMETER, 1/4" THREAD SIZE.
 6. GAS PRESSURE GAUGE, -5 TO +15 INCHES WC, 2.5" DIAMETER, 1/4" THREAD SIZE.
 7. BUTTERFLY MOD VALVE OPTION FOR MOD SIZE 2 (1" MOD VALVE).
 8. SHIP LOOSE GAS STRAINER TO BE INSTALLED UPSTREAM OF UNIT CONNECTION, 1" CONNECTION.
 9. PILOT LOCATED UPSTREAM OF FIRST REDUNDANT SOLENOID VALVE OF SIZE 1-3 MAX GAS PRESSURE OF 14" WC.
 10. MOTORIZED BACK DRAFT DAMPER 22.75" X 24" FOR SIZE 2 STANDARD & MODULAR HEATER UNITS W/EXTENDED SHAFT, STANDARD GALVANIZED CONSTRUCTION, 3/4" REAR FLANGE, LOW LEAKAGE, LF120S ACTUATOR INCLUDED.
 11. PROFILE PLATE CONFIGURATION FOR SIZE 2 DIRECT FIRED UNIT FOR LOW CFM APPLICATIONS.
 12. MOUNT LEAD REACTOR IN FAN.
 13. UNIT MOUNTED VFD FOR USE WITH ECPM03.
 14. HINGED DOUBLE WALL INSULATED DDOOR ASSEMBLY (BURNER/BLOWER SECTION).
 15. 2 YEAR PARTS WARRANTY.

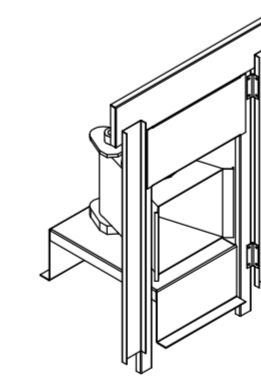
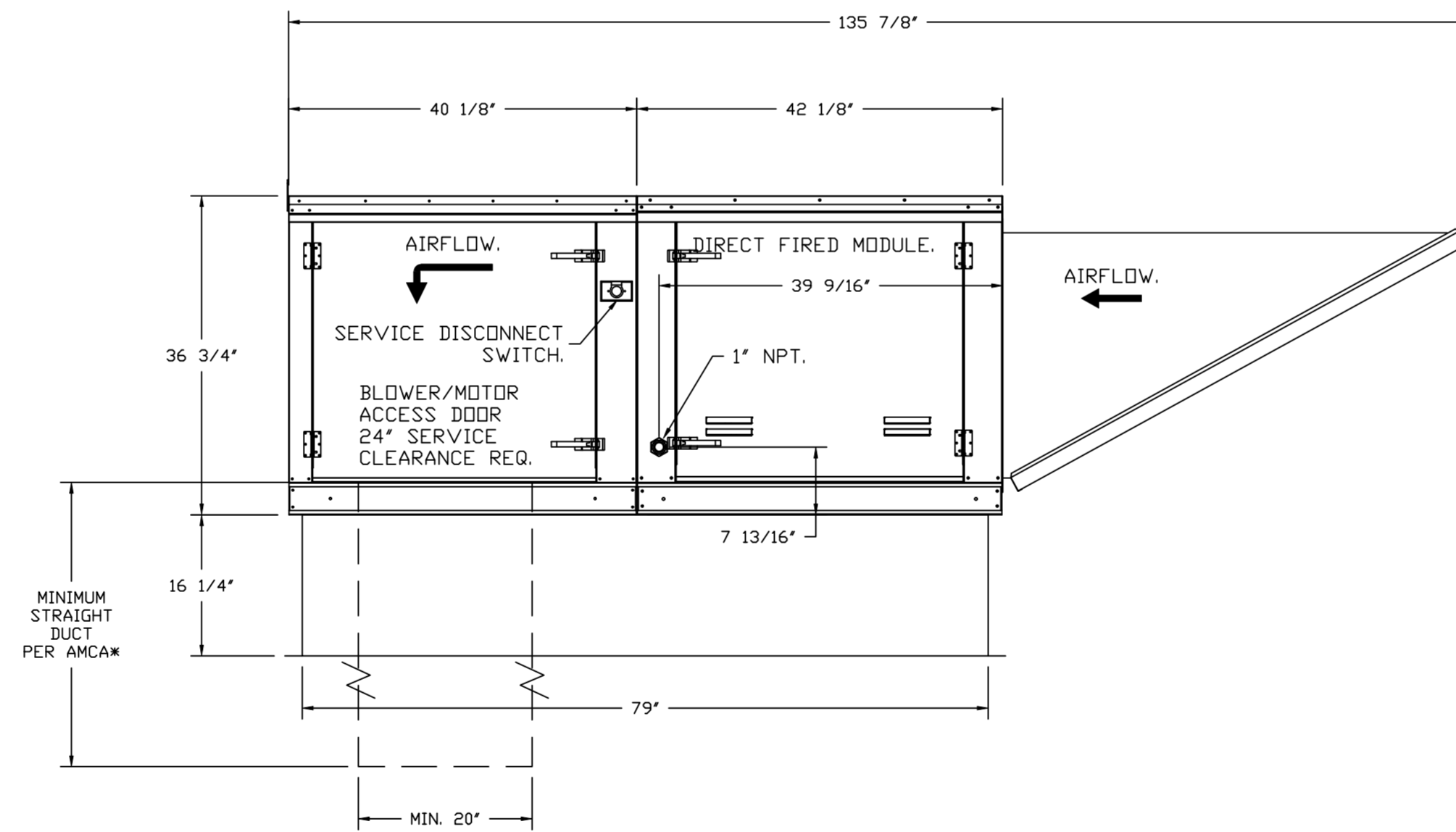
*NOTE: SUPPLY DUCT MUST BE INSTALLED TO MEET SMACNA STANDARDS. A MINIMUM STRAIGHT DUCT LENGTH MUST BE MAINTAINED DOWNSTREAM OF UNIT DISCHARGE AS OUTLINED IN AMCA PUBLICATION 201. WHEN USING RECTANGULAR DUCTWORK, ELBOWS MUST BE RADIUS THROAT, RADIUS BACK WITH TURNING VANES. FLEXIBLE DUCTWORK AND SQUARE THROAT/SQUARE BACK ELBOWS SHOULD NOT BE USED. ANY TRANSITION AND/OR TURNS IN THE DUCTWORK WILL CAUSE SYSTEM EFFECT. SYSTEM EFFECT WILL DRASTICALLY INCREASE STATIC PRESSURE AND REDUCE AIRFLOW. DO NOT RELY ON UNIT TO SUPPORT DUCT IN ANY WAY. FAILURE TO PROPERLY SIZE DUCTWORK MAY CAUSE SYSTEM EFFECTS AND REDUCE PERFORMANCE OF THE EQUIPMENT. SUGGESTED STRAIGHT DUCT SIZE IS 20" x 20".

SUPPLY SIDE HEATER INFORMATION:

WINTER TEMPERATURE = 1°F. TEMP. RISE = 110°F.
 BTUS CALCULATED OFF ACTUAL AIR DENSITY.
 OUTPUT BTUS AT ALTITUDE OF 0.0 FT. = 275260.
 INPUT BTUS AT ALTITUDE OF 0.0 FT. = 299196.
 OUTPUT BTUS AT ALTITUDE OF 394 FT. = 271363.
 INPUT BTUS AT ALTITUDE OF 394 FT. = 294960.



ROOF OPENING 2" SMALLER THAN CURB DIMENSION.



DIRECT FIRED (DF) PROFILE PLATE ASSEMBLY

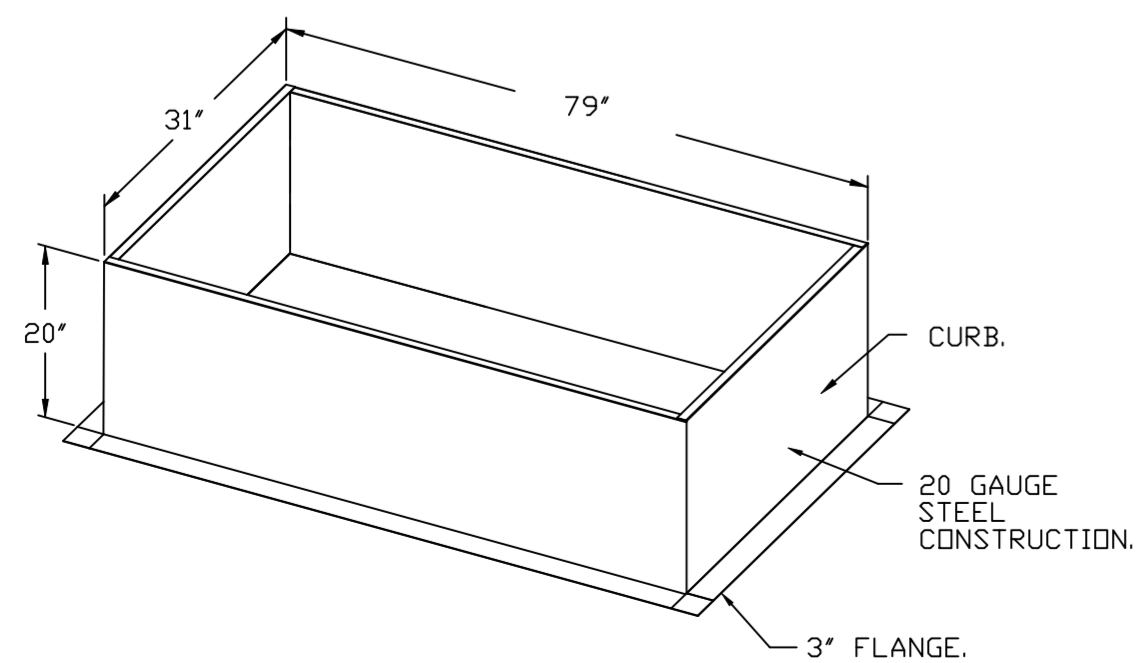
DIRECT FIRED PROFILE PLATE SPECIFICATIONS:

DESCRIPTION:
 DIRECT FIRED BURNERS SHALL HAVE PATENTED (US PATENT NO. US6699238B), SELF-ADJUSTING PROFILE PLATES DESIGNED TO ENSURE PROPER AIR VELOCITY AND PRESSURE DROP ACROSS THE BURNER. PROFILE PLATES SHALL ALLOW BURNERS TO ACHIEVE CLEAN COMBUSTION BY LIMITING BY-PRODUCT LEVELS TO A MAXIMUM OF 50PPM OF CARBON MONOXIDE (CO), AND 0.50PPM OF NITROGEN DIOXIDE (NO2). INDIRECT FIRED UNITS SHALL BE CONFIGURED WITH THE BLOWER MOUNTED DOWNSTREAM OF THE BURNER. THIS ARRANGEMENT WILL ENSURE A CONSISTENT AIRFLOW, REGARDLESS OF INLET AIR TEMPERATURE.

APPLICATION:
 SPRING-LOADED BURNER PROFILE PLATES ARE ENGINEERED TO AUTOMATICALLY REACT TO THE MOMENTUM OF A FRESH AIR STREAM, WITHOUT THE NEED FOR ANY MOTORS OR ACTUATORS TO MECHANICALLY ADJUST THEM. WITH THIS FEATURE, ALL DF UNITS ARE DESIGNED FOR DEMAND CONTROL VENTILATION (DCV) REQUIREMENTS.

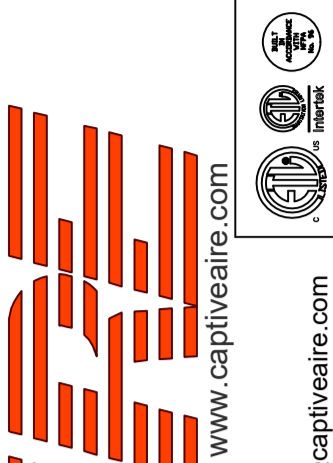
CERTIFICATIONS:
 ALL PROFILE PLATE ASSEMBLIES SHALL BE INCLUDED IN THE DF UNIT'S ETL LISTING AND COMPLY WITH COMBINED SAFETY STANDARDS ANSI Z83.4 AND CSA 3.7 (NON-RECIRCULATING DF HEATERS) AND ANSI Z83.18 (RECIRCULATING DF HEATERS).

GENERAL CONSTRUCTION:
 -PROFILE PLATES SHALL BE FORMED FROM G90 GALVANIZED STEEL.
 -PROFILE PLATES SHALL VARY IN SIZE PER UNIT.
 -PROFILE PLATES SHALL BE MOUNTED ALONG THE SAME PLANE AS THE DISCHARGE OF THE BURNER.
 -SECTION SHALL INCORPORATE PROPERLY TORQUED, PERMANENTLY MOUNTED SPRING HINGES.
 -SPRING HINGES SHALL BE MADE FROM PLATED STEEL.



REVISIONS

| DESCRIPTION | DATE |
|-------------|------|
| | |
| | |
| | |
| | |



CAPTIVE AIR
 Highwoods Group
 www.captiveair.com
 4641 Paragon Park Rd., Raleigh, NC, 27616 PHONE: (919) 875-0420 FAX: (919) 875-0577 EMAIL: reg10@captiveair.com

CHIPOTLE LEASIDE #4733
 101 LAIRD DRIVE,
 TORONTO, ON, M4G 3T7

DATE: 4/20/2023

DWG.#:
 5747954

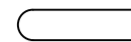
DRAWN BY: JMB-40

SCALE:
 3/4" = 1'-0"

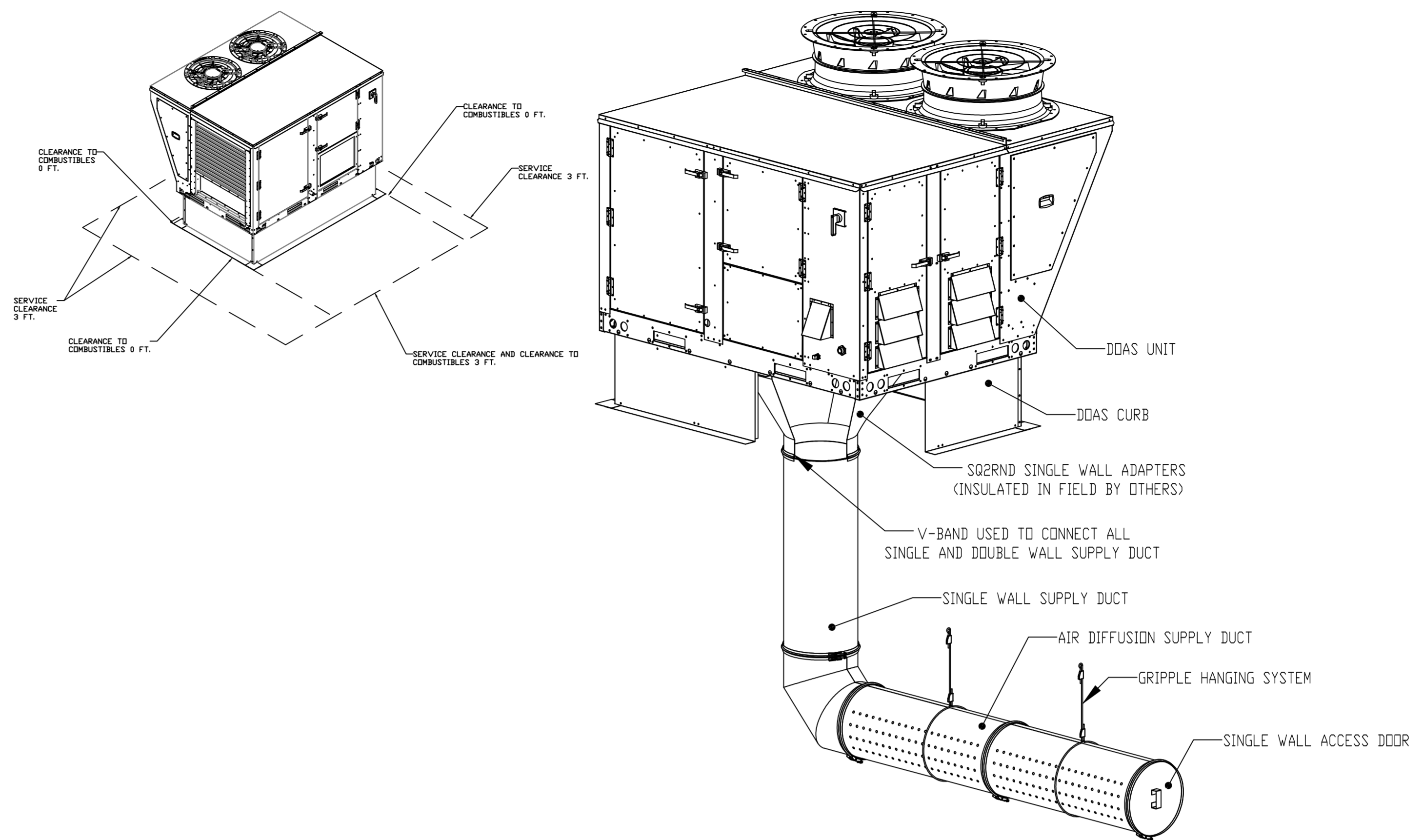
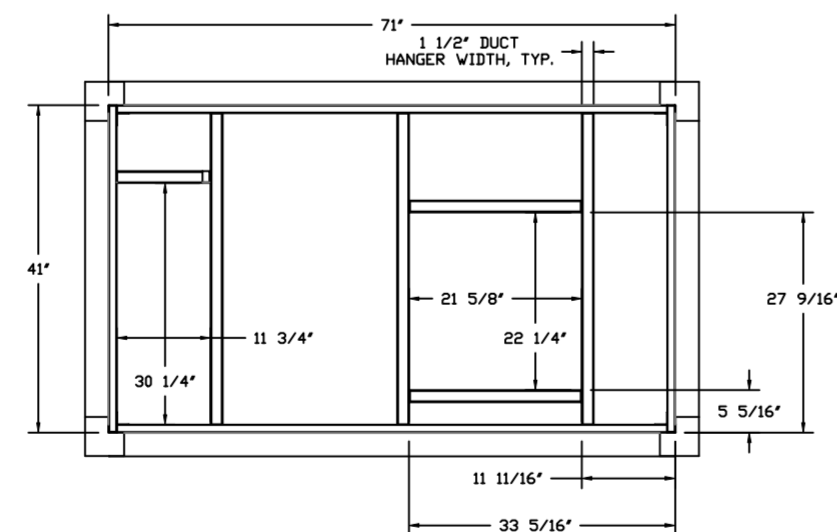
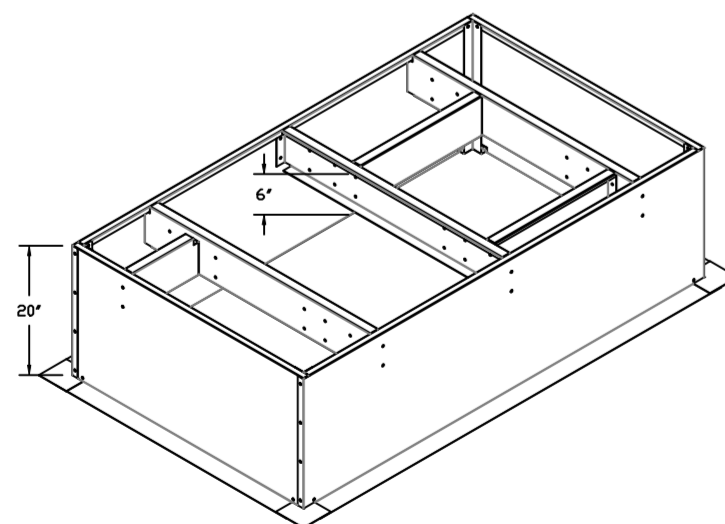
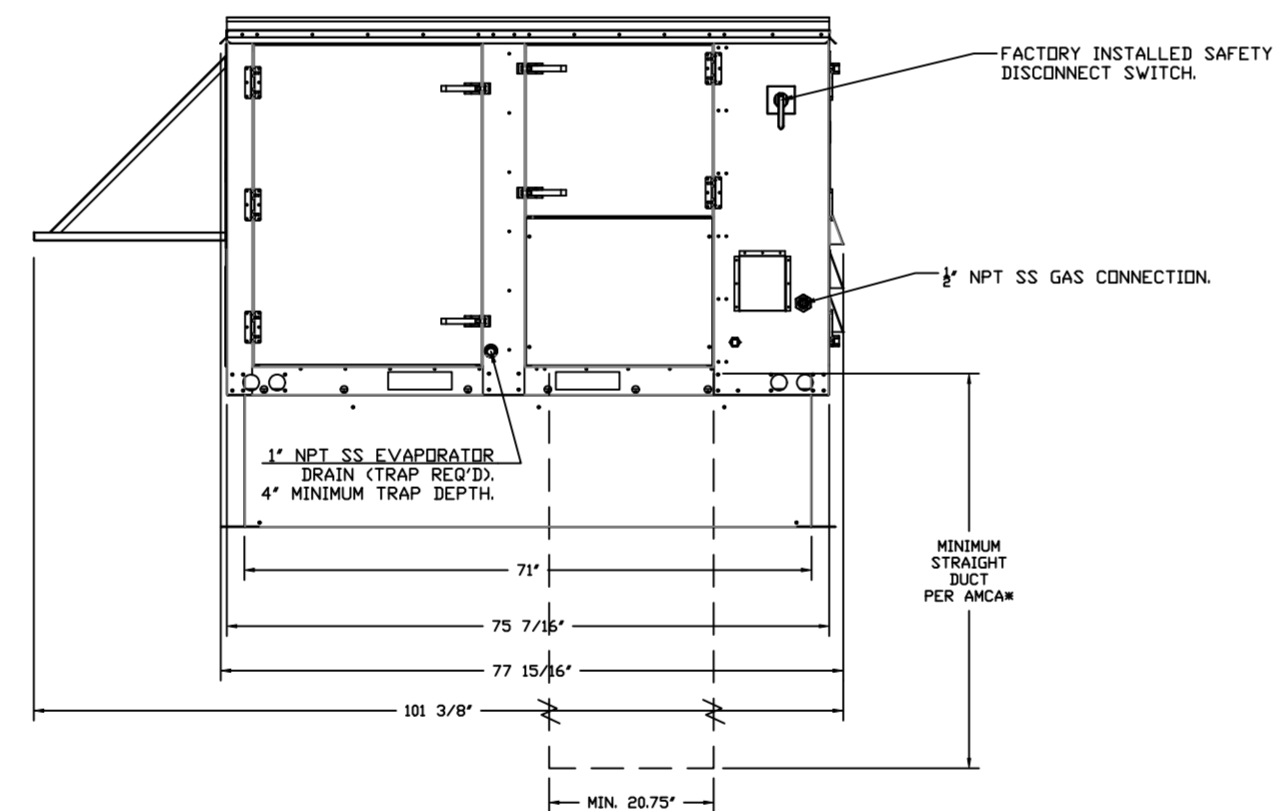
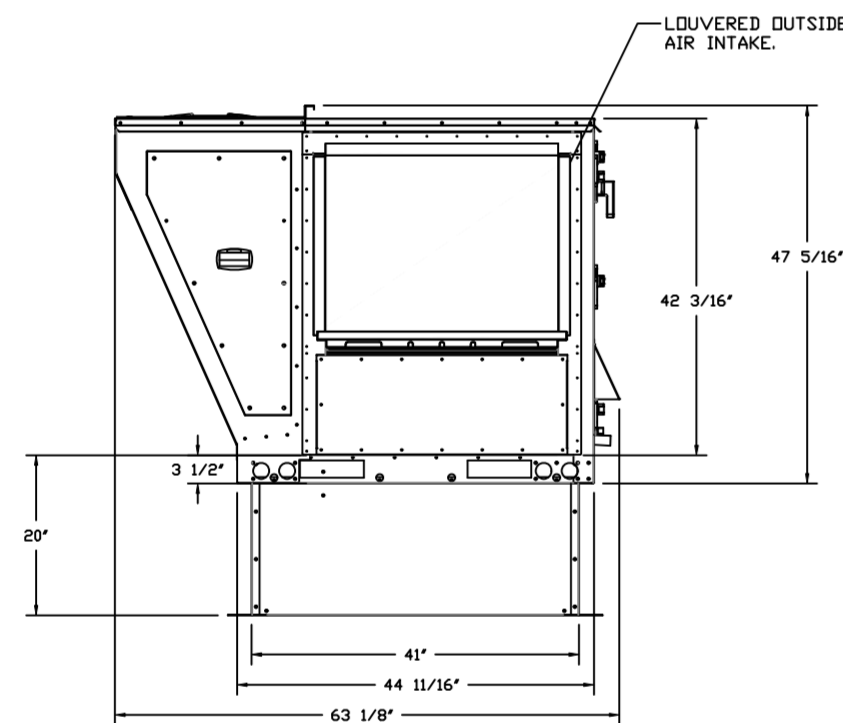
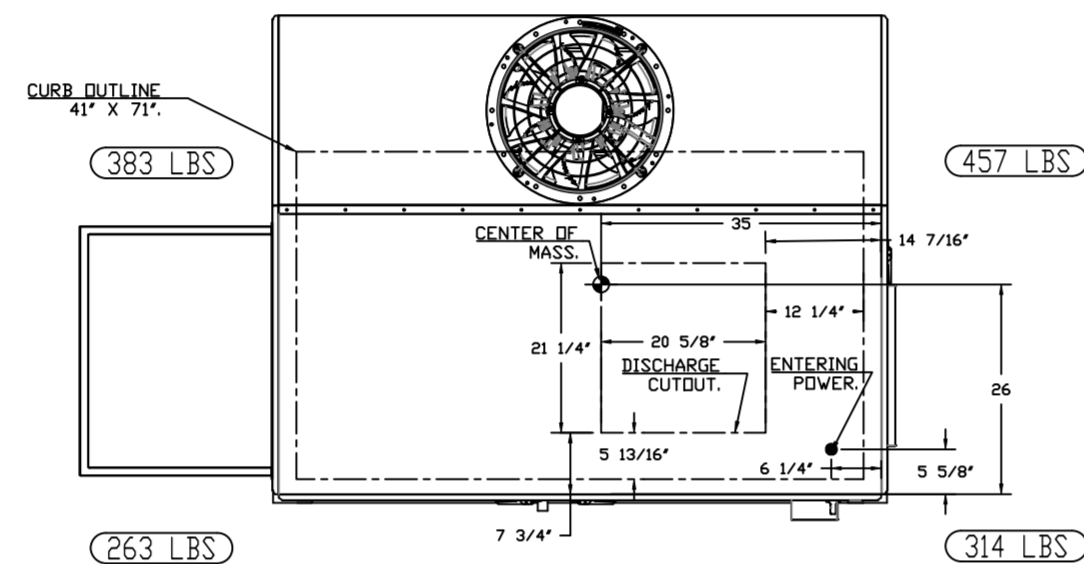
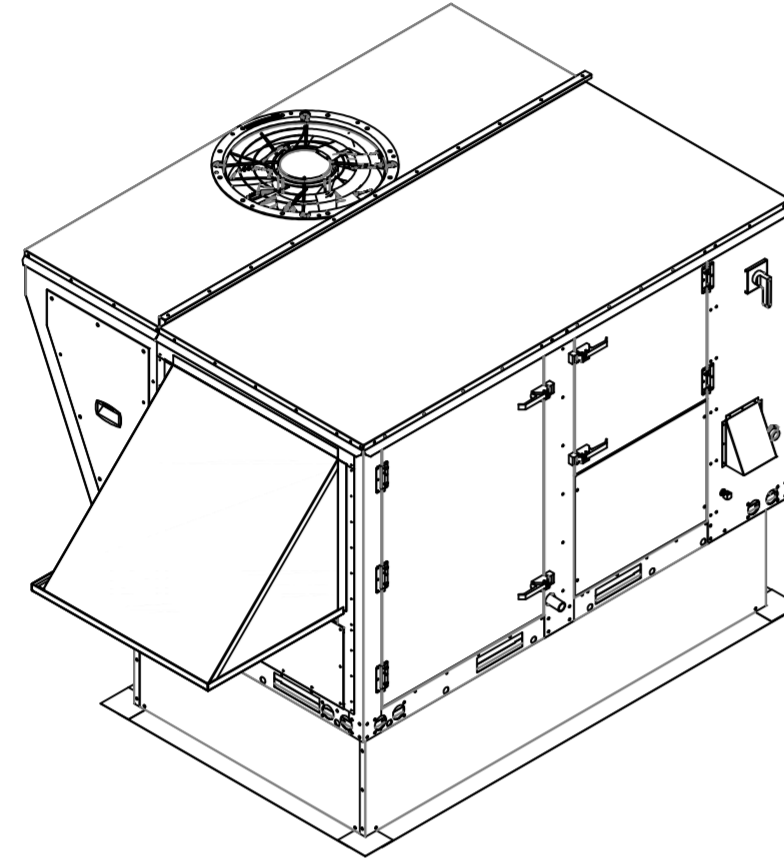
MASTER DRAWING

SHEET NO.
 5

NOTES:

- DO NOT OBSTRUCT OUTSIDE AIR INLET, OUTSIDE AIR COIL OR OUTSIDE AIR FAN.
-  DENOTES CORNER WEIGHT.
- ROOF OPENING MUST BE 2' SMALLER THAN CURB DIMENSIONS IN BOTH DIRECTIONS.

*NOTE: SUPPLY DUCT MUST BE INSTALLED TO MEET SMACNA STANDARDS. A MINIMUM STRAIGHT DUCT LENGTH MUST BE MAINTAINED DOWNSTREAM OF UNIT DISCHARGE AS OUTLINED IN AMCA PUBLICATION 201. WHEN USING RECTANGULAR DUCTWORK, ELBOWS MUST BE RADIUS THROAT, RADIUS BACK WITH TURNING VANES. FLEXIBLE DUCTWORK AND SQUARE THROAT/SQUARE BACK ELBOWS SHOULD NOT BE USED. ANY TRANSITION AND/OR TURNS IN THE DUCTWORK WILL CAUSE SYSTEM EFFECT. SYSTEM EFFECT WILL DRASTICALLY INCREASE STATIC PRESSURE AND REDUCE AIRFLOW. DO NOT RELY ON UNIT TO SUPPORT DUCT IN ANY WAY. FAILURE TO PROPERLY SIZE DUCTWORK MAY CAUSE SYSTEM EFFECTS AND REDUCE PERFORMANCE OF THE EQUIPMENT. SUGGESTED STRAIGHT DUCT SIZE IS 20.75' x 21.5'.



AIR DIFFUSION SUPPLY DUCT SPECIFICATIONS:
 PROVIDE AIR DIFFUSION SUPPLY DUCT EQUAL TO CAPTIVEAIRE SYSTEMS MODEL DW-S0(HC), DW-S90(HC), & DW-S180(HC). THREE DISTINCT HOLE PATTERN OPTIONS TO COVER A VARIETY OF CEILING HEIGHTS. NO ADDITIONAL DIFFUSERS REQUIRED, AS THE DUCT ITSELF PROVIDES AIR DIFFUSION. MADE OF HIGH QUALITY STAINLESS STEEL DESIGNED TO LAST 20+ YEARS. HIGH INDUCTION SUPPLY DUCT IS CONSTRUCTED USING 24 GAUGE, 430 SS - 5' THRU 24'. HIGH INDUCTION SUPPLY DUCT IS CONSTRUCTED USING 20 GAUGE, 430 SS - 26' THRU 36'. QUICK ONSITE ASSEMBLY USING EPDM GASKETS & UNIVERSAL V-BANDS. DOUBLE WALL SUPPLY DUCT AVAILABLE FOR INTERIOR AND EXTERIOR SPACES, EITHER CONDITIONED OR UNCONDITIONED. DOUBLE WALL SUPPLY DUCT AVAILABLE IN DW-1S, DW-2S, & DW-3S TO MEET SPECIFIC REGIONAL "R" VALUE REQUIREMENTS.

| Insulation R-Value Recommendations | | |
|------------------------------------|-----------------|---------------------------------------|
| Supply Duct Type | Minimum R-value | Space Type |
| Single Wall - S & -HC | N/A | Conditioned Space Only |
| Double Wall - 1S | R-4 | Unconditioned Interior Space Only |
| Double Wall - 2S | R-8 | Unconditioned Space Climate Zones 1-4 |
| Double Wall - 3S | R-12 | Unconditioned Space Climate Zones 5-8 |

DOUBLE WALL SUPPLY DUCT IS INSULATED WITH A 24 GAUGE 430 STAINLESS OUTER SHELL. AIR DIFFUSION SUPPLY DUCT COMPLIES WITH SMACNA (SHEET METAL AND AIR CONDITIONING CONTRACTORS) BEST PRACTICES. POSITIONING OF SPRINKLERS TO AVOID OBSTRUCTION TO DISCHARGE, SEE NFPA 13, TABLE 8.12.5.1.1.

TYPICAL DOAS/RTU ROOF MOUNTING INSTALLATION INSTRUCTIONS

- SECURE THE CURB TO THE ROOF FRAMING MEMBERS BY DRILLING 1/4" PILOT HOLES IN THE CURB FLANGES AT LOCATIONS SHOWN IN THE DIAGRAM BELOW. USING 3/8" X 2" ZINC PLATED STEEL LAG BOLTS, AND ZINC PLATED WASHERS, SCREW THROUGH THE CURB FLANGES AND INTO THE ROOF FRAMING MEMBERS. A MINIMUM OF (5) LAG BOLTS ON EACH SHORT SIDE, AND (7) LAG BOLTS ON EACH LONG SIDE IS REQUIRED.
- SECURE THE UNIT BASE TO THE SIDE WALLS OF THE CURB USING (24) 1/4"-14 X 2" SELF-DRILLING, STEEL ZINC PLATED SCREWS. PRE-PUNCHED HOLES HAVE BEEN PROVIDED FOR EACH SCREW LOCATION.

REVISIONS

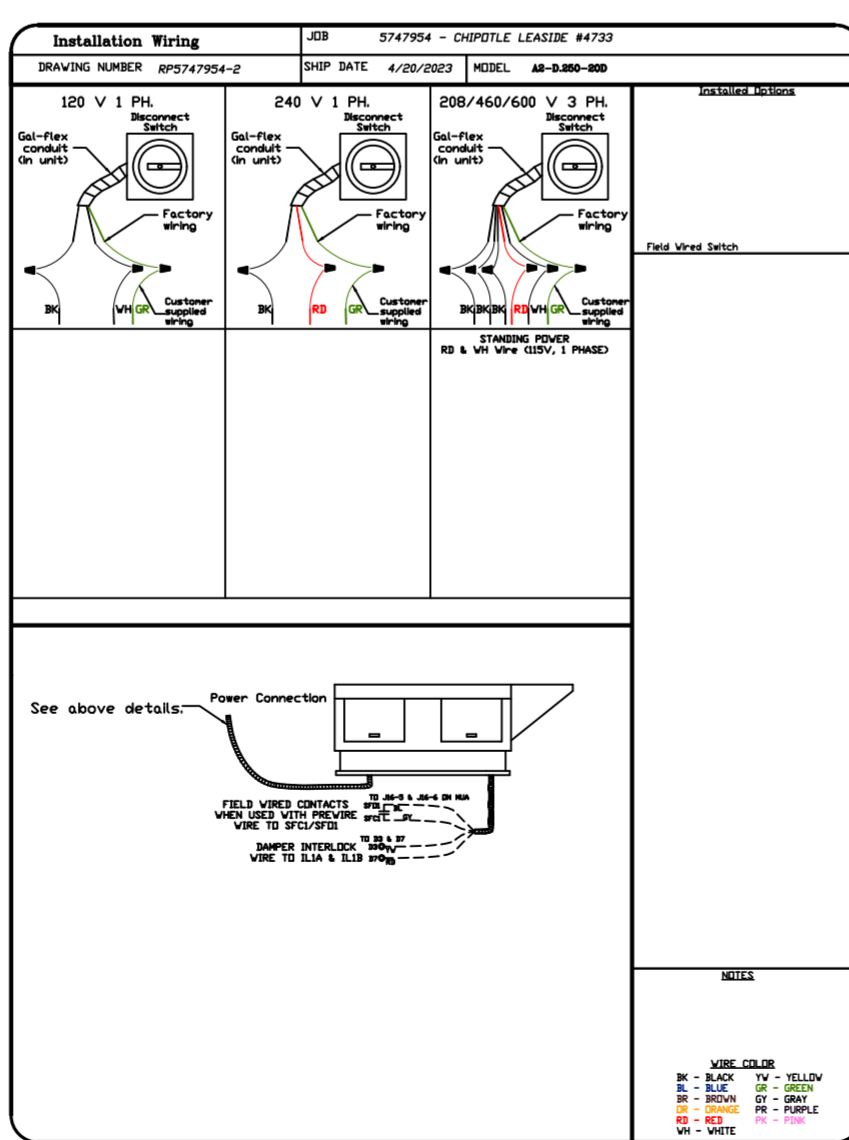
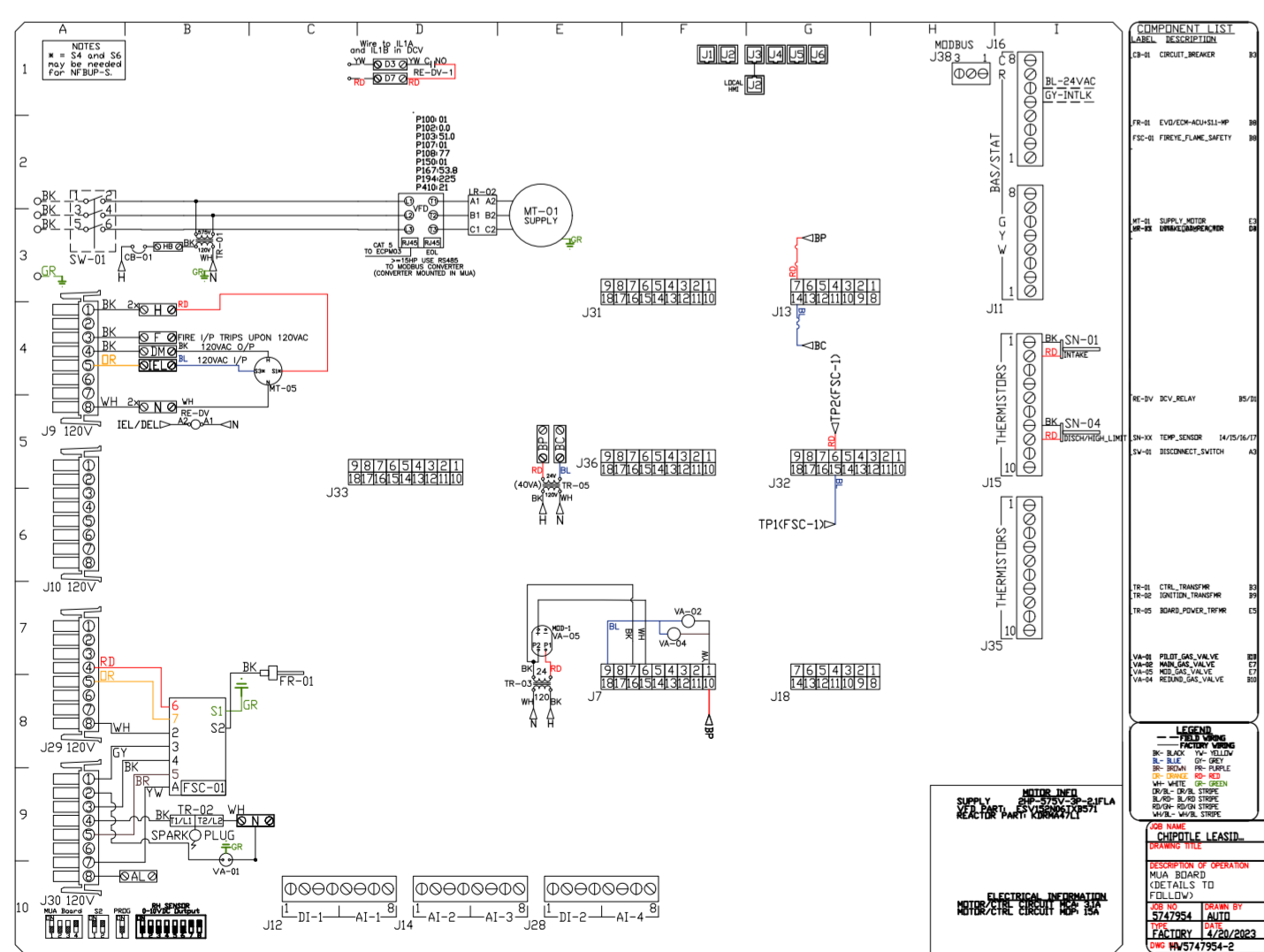
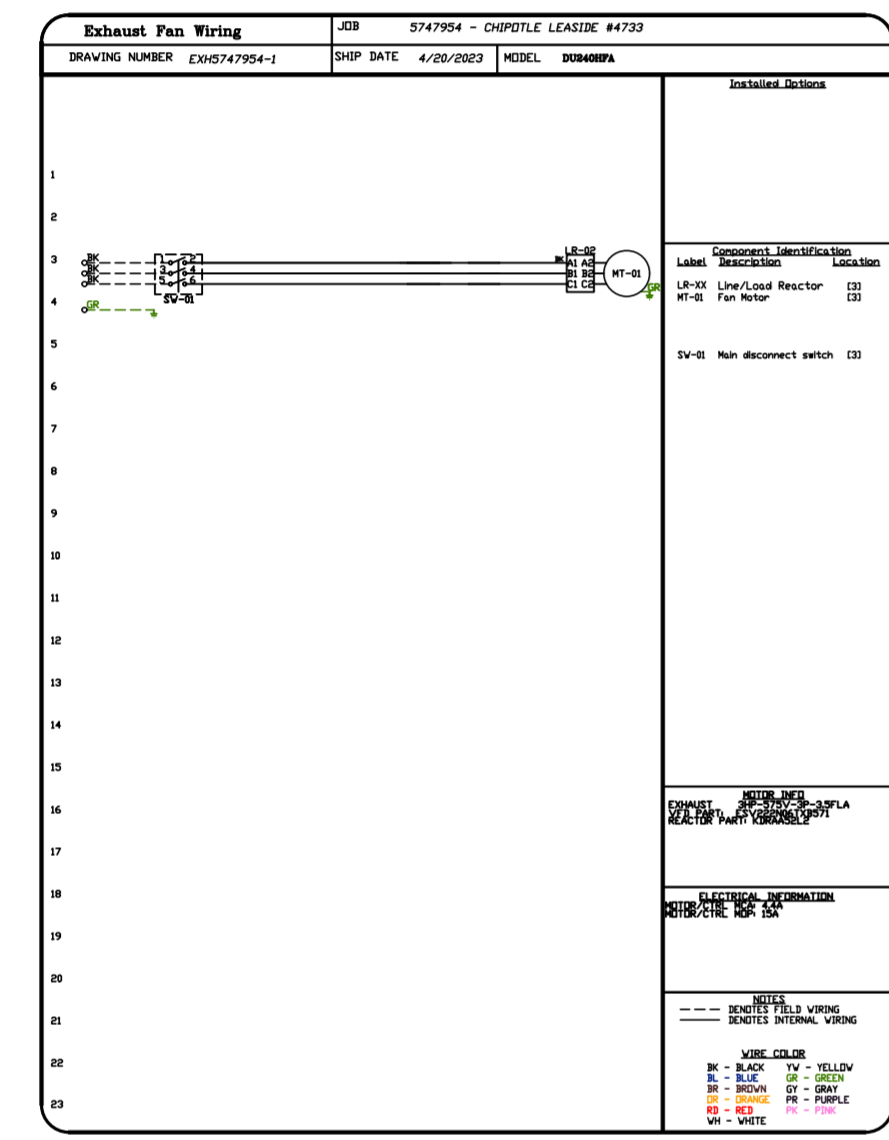
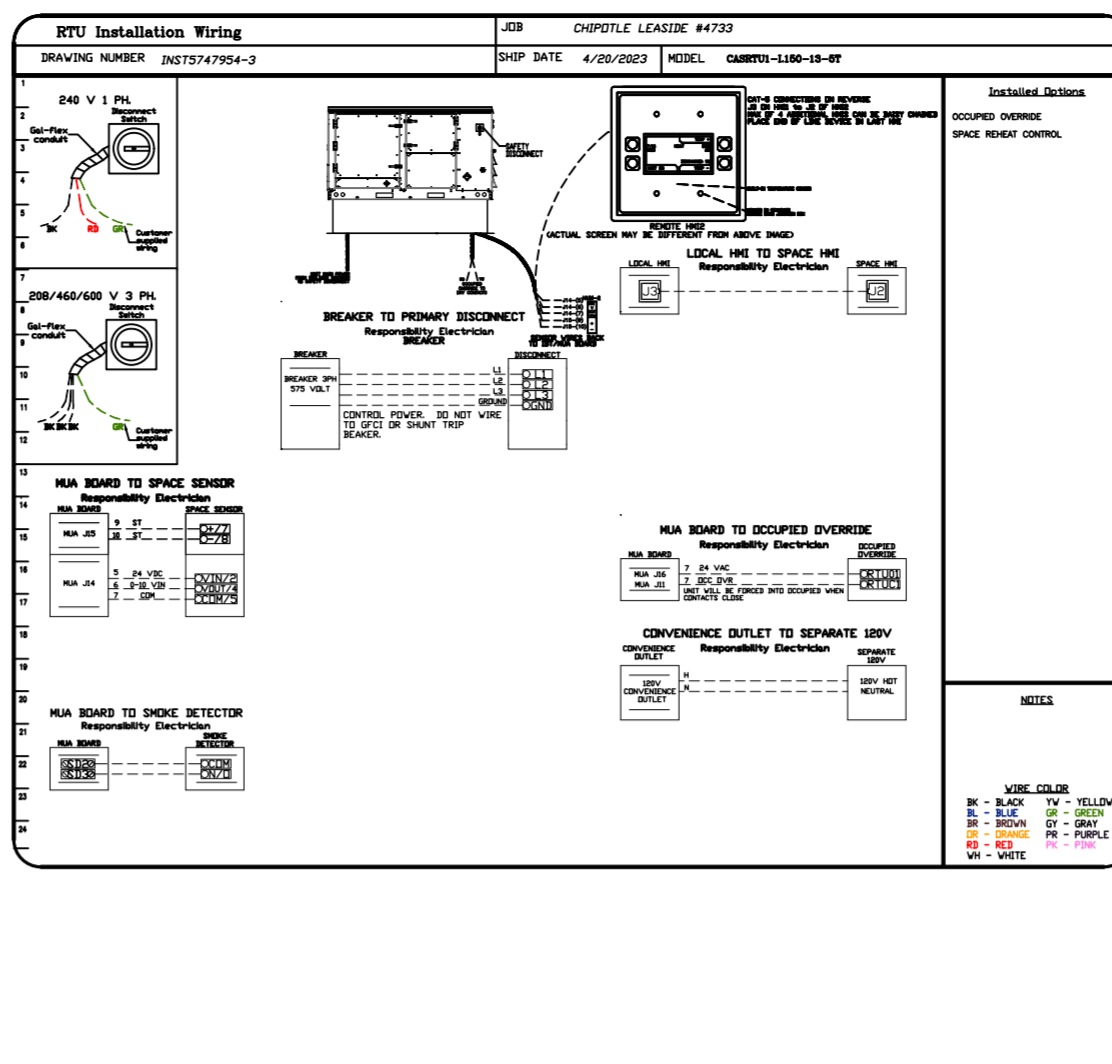
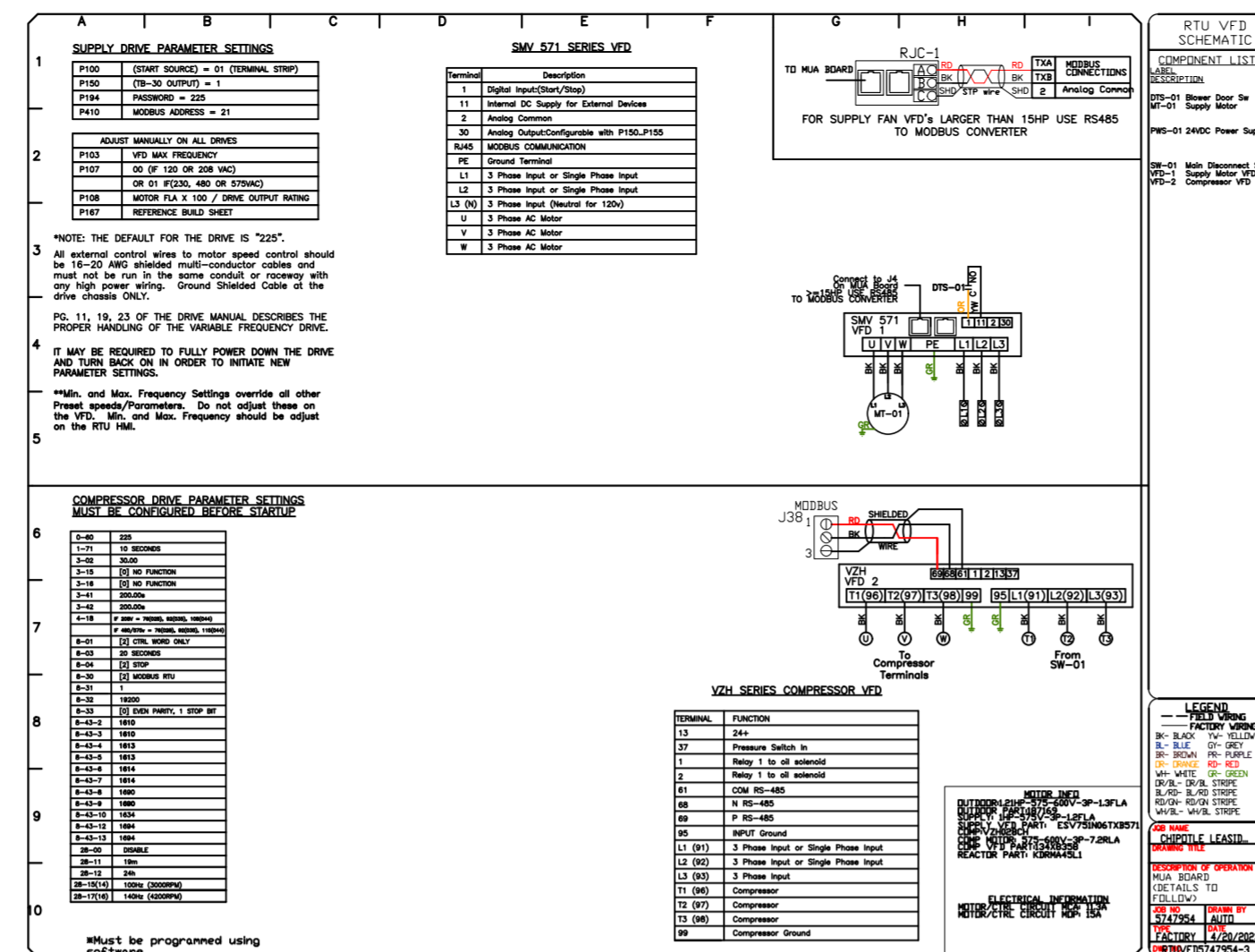
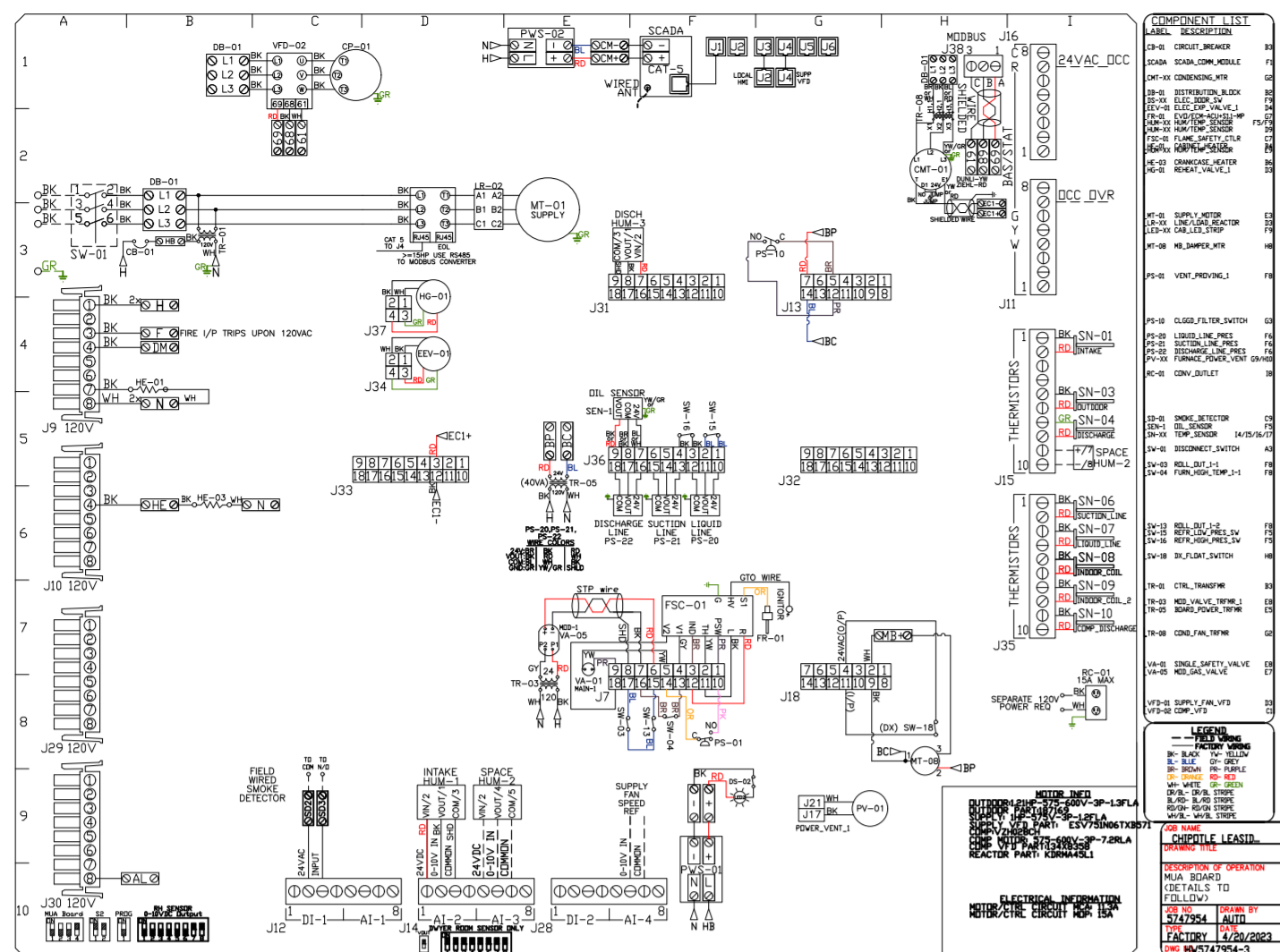
| DESCRIPTION | DATE: |
|-------------|-------|
| | |
| | |
| | |
| | |

CAPTIVEAIRE
 www.captiveaire.com
 Highwoods Group
 4641 Paragon Park Rd., Raleigh, NC 27616 PHONE: (919) 875-0420 FAX: (919) 875-0577 EMAIL: reg@captivair.com

CHIPOTLE LEASIDE #4733
 101 LAIRD DRIVE,
 TORONTO, ON, M4G 3T7

DATE: 4/20/2023
 DWG.#: 5747954
 DRAWN BY: JMB-40
 SCALE: 1/2" = 1'-0"
 MASTER DRAWING

SHEET NO.
 6



REVISIONS

| NO. | DESCRIPTION | DATE |
|-----|-------------|------|
| 1 | | |
| 2 | | |
| 3 | | |
| 4 | | |

CAPTIVE

www.captiveaire.com

Highwoods Group

4641 Paragon Park Rd., Raleigh, NC, 27616 PHONE: (919) 875-0420 FAX: (919) 875-0577 EMAIL: reg@captivair.com

CHIPOTLE LEASIDE #4733

101 LAIRD DRIVE,
TORONTO, ON, M4G 3T7

DATE: 4/20/2023

DWG.#:
5747954

DRAWN BY: JMB-40

SCALE:
1/2" = 1'-0"

MASTER DRAWING

SHEET NO.
7

