

Report By:

National TAB
1329 E. KEMPER ROAD
SUITE 4210
CINCINNATI, OH 45246



Report: TAB

Function: Test, Adjust, & Balance

Date: 08/08/2024

PROJECT

08-05-24 FIREBIRDS FORT MILL, SC

2147 WEST HWY 160

FORT MILL, SC 29708

Client

FIREBIRD RESTAURANTS

8700 Red Oak Blvd, Unit J

CHARLOTTE, NC 28217

National TAB

Project: 08-05-24 FIREBIRDS FORT MILL, SC

Table Of Contents

| Section | Page # |
|---------------------|---------------|
| SUMMARY | 3 |
| REMARKS | 4 |
| BALANCE SCHEDULE | 8 |
| Checklist Data | 9 |
| AHU/RTU | 27 |
| FAN - Exhaust | 35 |
| FAN - Supply | 42 |
| Kitchen Hood Type I | 43 |
| File Data | 47 |

Project Summary

The summary below provides a quick understanding of our scope of work and general testing procedures. Enclosed in the report is further detail about your building performance including recommendations, asset data, and pictures. Our focus is to work with the trades to remedy any issues or deficiencies during the actual field balancing and not after the balancing has occurred to achieve a positive environment and outcome. The level of success is determined by the availability of the trades, possible parts needed, or time constraints.

DOAS w/ Diffusers

Each of the DOAS were measured at their terminal devices or via traverse to establish a total flow for that unit. Each DOAS was adjusted to within tolerance of the engineer's design flow. Each outlet was then adjusted to within tolerance of the design flow. Outside air was measured by reading the intake air opening with a velocity grid and multiplying by the free area. The outside air damper was adjusted until the airflow was within the design requirements. Any equipment that fell outside of that tolerance is noted throughout the report.

Kitchen Exhaust Hood & Associated Fans

Each kitchen exhaust fan was measured at the hood filter bay utilizing a velocity matrix and a manufacturer's correction factor. Each filter velocity is multiplied by the manufacturer's corrected area. The sum of these readings equals the total flow of the exhaust fans. The total flow of the exhaust was then adjusted to within tolerance of the design flow. . Any EF's that fell outside of this tolerance is noted throughout the report.

General Exhaust Fans w/ Grilles

The general exhaust fans were measured by reading each air device with a flow hood. The total airflow for each fan is equivalent to the sum of these readings. Fan speed was then adjusted so that the airflow was within tolerance of design. Each terminal device was balanced to within tolerance of the design volume using the installed volume dampers. Any equipment that fell outside of this tolerance is noted throughout the report.

Final Building Tests

After completing the test and balance the final building pressure was measured. It was confirmed that the building pressure fell within acceptable tolerances of $-0.02''$ wc to $+0.02''$ wc and that the pressure measurement coincides with the actual and design net airflow. Any deviations from these standards are noted throughout the report.

The hood capture was tested at the perimeter of the hood and the cook top level with the equipment heat on to ensure satisfactory hood capture and containment.

Issue List

- Restroom fan
- RTU GAS
- Supply grill



08-05-24 FIREBIRDS FORT MILL, SC

Project Issue Information

Issue Name : Restroom fan
Description : Restroom fan has high flow. 125% over design (450cfm/200cfm). Speed dial at min balanced proportionately. Spoke with electrical and mechanical about not being able to control motor speed.
Created By : National TAB **Assigned To :** National TAB - Will Turnbough
Status : Open
Priority : High **Asset Tag :**
Originated Date : 08/08/2024 - Jearod Ferrette - National TAB



08-05-24 FIREBIRDS FORT MILL, SC

Project Issue Information

Issue Name : RTU GAS
Description : All RTU's gas is turned off.
Created By : National TAB **Assigned To :** National TAB - Will Turnbough
Status : Open
Priority : High **Asset Tag :**
Originated Date : 08/08/2024 - Jearod Ferrette - National TAB



08-05-24 FIREBIRDS FORT MILL, SC

Project Issue Information

Issue Name : Supply grill
Description : On RTU 2 grill 1 and 3 are the wrong size per design
Created By : National TAB **Assigned To :** National TAB - Will Turnbough
Status : Open
Priority : Medium **Asset Tag :**
Originated Date : 08/08/2024 - Jearod Ferrette - National TAB

National TAB

Project: 08-05-24 FIREBIRDS FORT MILL, SC

- [Open](#) BALANCE_SCHEDULE_LARGE_JOBS.xlsx

CheckList List

- TECH - SITE PICTURES
- TECH - STEP 1: INITIAL WALKTHROUGH
- TECH - STEP 2: UNIT DATA AND EVAL
- TECH - STEP 3: TEST, ADJUST AND BALANCE
- TECH - STEP 4: FINAL TESTS



08-05-24 FIREBIRDS FORT MILL, SC

CheckList Information

Name : TECH - SITE PICTURES **Status :** Completed

Assigned Organization : National TAB **Asset :**

Requesting Organization : National TAB

Created Date : 08/01/2024 - Brianna Biggs - National TAB

Completed Date : 08/07/2024 - Jearod Ferrette - National TAB

CheckList Item Details

STORE FRONT

Yes

Comment:



08/06/2024

DOAS-1

Yes

Comment:



RTU-1

Yes

Comment:



RTU-2

Yes

Comment:



RTU-3

Yes

Comment:



KEF-1

Yes

Comment:



08/06/2024

KEF-2

Yes

Comment:



08/07/2024

KEF-3

Yes

Comment:



08/07/2024

KEF-4

Yes

Comment:



08/07/2024

EF-DISH

Yes

Comment:



08/07/2024

MUA-1

Yes

Comment:



08/07/2024

HD-33 MAIN LEFT

Yes

Comment:



08/07/2024

HD-33 MAIN RIGHT

Yes

Comment:



08/07/2024

HD-38

Yes

Comment:



08/07/2024

HD-70

Yes

Comment:



08/07/2024



08-05-24 FIREBIRDS FORT MILL, SC

CheckList Information

Name : TECH - STEP 1: INITIAL WALKTHROUGH **Status :** Completed
Assigned Organization : National TAB **Asset :**
Requesting Organization : National TAB
Created Date : 08/01/2024 - Brianna Biggs - National TAB
Completed Date : 08/08/2024 - Jearod Ferrette - National TAB

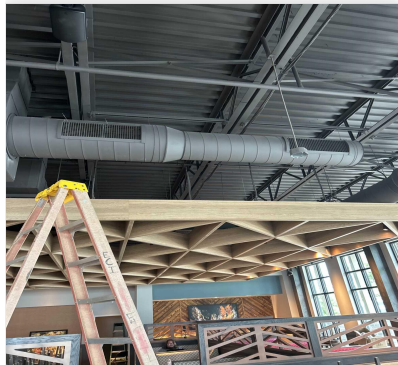
CheckList Item Details

INITIAL SITE WALKTHROUGH

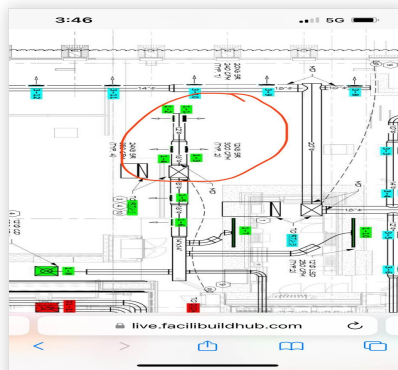
All diffusers and grilles are installed and match design? No

Comment:

ON RTU 2 GRILL 1 AND 3 ARE THE WRONG SIZE PER DESIGN.



08/08/2024



08/08/2024

All hood filters installed and accounted for? Yes

Comment:

Hoods are wired and have power? Yes

Comment:

Hood is free of alarms?

Yes

Comment:

Thermostats have power?

Yes

Comment:

Have trades/general contractor been notified about any issues and are they created on FaciliBuild?

Comment:

YES.GC AND MECHANICAL ON SITE AND THERE ADDRESSING THE ISSUES.



08-05-24 FIREBIRDS FORT MILL, SC

CheckList Information

Name : TECH - STEP 2: UNIT DATA AND EVAL **Status :** Completed
Assigned Organization : National TAB **Asset :**
Requesting Organization : National TAB
Created Date : 08/01/2024 - Brianna Biggs - National TAB
Completed Date : 08/08/2024 - Jearod Ferrette - National TAB

CheckList Item Details

UNIT DATA AND EVALUATION WHILE GATHERING UNIT DATA CHECK THE FOLLOWING:

RTU's/AHU's

Economizers are assembled and functional? Yes

Comment:

DCV Max damper opening position is set to minimum? Yes

Comment:

Free cooling enthalpy set point set for lowest setting (Typically "D") Yes

Comment:

Motors are all operating below the FLA rating? Yes

Comment:

Are belts tight?

Comment:

NA

If direct drive unit is the speed controller working.

Comment:

YES

Is gas piping installed and valves turned on?

No

Comment:

GAS NOT TURNED ON AT SITE

Unit free of noticeable noise and vibration

Yes

Comment:

EF's

Rotation is correct?

Yes

Comment:

Belts are tight?

Comment:

DD

Grease cup installed on hood fan?

Yes

Comment:

Hinge kit installed installed on hood fan?

Yes

Comment:

Lean fan back. Is grease duct installation adequate and is duct ran all the way to the base of the fan?

Yes

Comment:

Flex conduit is long enough so that fan can be completely tilted back?

Yes

Comment:

There is no major leakage around base of fan?

Yes

Comment:

NO LEAKAGE TO NOTE

Is the motor operating below the motor FLA rating?

Yes

Comment:

For restroom fan(s) is the back draft damper installed and can it fully open?

No

Comment:

BACK DRAFT DAMPER INSTALLED OPEN DUCTWORK PIPED DOWN TO THE RESTROOMS

Unit free of noticeable noise and vibration?

Yes

Comment:

MUA

Rotation is correct?

Yes

Comment:

Gas piping is installed and valves are in on position?

No

Comment:

GAS NOT TURNED ON

Heater tested and is functional?

No

Comment:

GAS NOT TURNED ON

Internal motorized damper is fully opening?

Yes

Comment:

Motor is operating below the FLA rating?

Yes

Comment:

Unit free of noticeable noise and vibration?

Yes

Comment:

HOODS

Kitchen equipment installed in proper places?

Yes

Comment:

Can kitchen equipment be turned on for final smoke test?

Yes

Comment:

DOCUMENTATION

Have trades/general contractor been notified about any issues and are they created on FaciliBuild?

Yes

Comment:



08-05-24 FIREBIRDS FORT MILL, SC

CheckList Information

Name : TECH - STEP 3: TEST, ADJUST AND BALANCE **Status :** Completed

Assigned Organization : National TAB **Asset :**

Requesting Organization : National TAB

Created Date : 08/01/2024 - Brianna Biggs - National TAB

Completed Date : 08/08/2024 - Jearod Ferrette - National TAB

CheckList Item Details

TEST, ADJUST, AND BALANCE ALL EQUIPMENT:

DURING TESTING MAKE NOTE OF THE FOLLOWING:

Is space free of drafting? Yes

Comment:

Is space comfortable in all areas? Yes

Comment:

Is the space free of ventilation noise? Yes

Comment:

If deviations from design were necessary to resolve 1-3 what were they? Otherwise put "NA".

Comment:

8/6-JEAROD-RESTROOM FAN HAS HIGH FLOW. 125% OVER DESIGN (450 CFM /200 CFM). SPEED DIAL AT MIN. BALANCED PROPORTIONATELY.



08-05-24 FIREBIRDS FORT MILL, SC

CheckList Information

Name : TECH - STEP 4: FINAL TESTS **Status :** Completed

Assigned Organization : National TAB **Asset :**

Requesting Organization : National TAB

Created Date : 08/01/2024 - Brianna Biggs - National TAB

Completed Date : 08/08/2024 - Jearod Ferrette - National TAB

CheckList Item Details

FINAL TESTS

HOOD CAPTURE TEST

List equipment turned on for testing

Comment:

NA/ NO GAS.

List smoke candle type used

Comment:

EMITTER

Smoke test capture - Perimeter of hood

Comment:

100%

Smoke test capture - Top of cooking surface

Comment:

100%

WITNESS

Date test was completed

08/08/2024

Comment:

TAB tech name / Firm

Comment:

JEAROD FERRETTE/ TONT FLORES

Site super name / Firm

Comment:

NA

Owner representative name / Firm (if Applicable)

Comment:

NA

Building pressure at front & back doors (All Systems On)

Comment:

FRONT DOOR 0.008/ REAR DOOR 0.01- ALL SYSTEMS ON

ADDITIONAL

Do actual net building airflow, design net building airflow, and pressure coincide? If not why? (All three should either be positive or negative)

Comment:

PASS

Thermostats are programmed?

Yes

Comment:

National TAB

Project: 08-05-24 FIREBIRDS FORT MILL, SC

System/Unit: AHU/RTU



Asset: DOAS-1

AREA:KITCHEN

| Unit Data | | |
|---------------------|----------------------|----------------------|
| | Design | Actual |
| MFG | CAPTIVEAIRE | CAPTIVEAIRE |
| Serial Num | - | 6607946 |
| Model Num | CASRTU3-I.400-24-30T | CASRTU3-I.400-24-30T |
| Type | DOAS | DOAS |
| Configuration | VERTICAL | VERTICAL |
| Num OA Filters 1 | - | 1 |
| OA Filter Size 1 | - | 31.5" x 45.5" |
| Num Final Filter 1 | - | 4 |
| Final Filter Size 1 | - | 19.5" x 24.5" |
| Num Final Filter 2 | - | 4 |
| Final Filter Size 2 | - | 19.5 x 24.5" |

| Motor Data | | |
|----------------|--------|--------|
| | Design | Actual |
| Motor MFG | - | TECO |
| Frame | - | 215T |
| Horsepower | 5 | 5 |
| Motor Rpm | - | 1165 |
| Phase | 3 | 3 |
| Rated Voltage | 208 | 230 |
| Rated Amperage | - | 14.3 |

| Drive Data | |
|--------------------|--------|
| | Actual |
| Motor Sheave Size | DD |
| Motor Bore Size | DD |
| Motor Sheave SetPt | DD |
| Fan Sheave Size | DD |
| Fan Sheave Bore | DD |
| Belt CL Distance | DD |
| Num of Belts | DD |
| Belt Size | DD |
| Belt Alignment | DD |

| Test Data | | |
|------------------------|--------|---------|
| | Design | Actual |
| SF CFM | 4500 | 4540 |
| SF RPM | - | DD/60HZ |
| RA CFM | 0 | 0 |
| OA CFM | 4500 | 4540 |
| RL Voltage | - | 210 |
| RL Amperage | - | 13.4 |
| SF Rotation | - | CCW |
| SF System SetPt | - | 60Hz |
| RA Damper Position | - | 0% |
| Min OA Damper Position | - | 100% |
| Min OA Damper Type | - | DOAS |
| OA Enthalpy Setpt | - | 100% OA |

| Performance Data | | |
|------------------|--------|---------|
| | Design | Actual |
| MA Plenum SP | - | -0.28" |
| Fan Suction SP | - | -1.20 " |
| Fan Discharge SP | - | 0.48" |
| Total ESP | 0.50" | 0.76" |
| Fan Total SP | - | 1.68" |

| General | |
|----------------------------|--------|
| | Actual |
| Fan Rotation Correct | YES |
| Unit Filters Clean | YES |
| Condensate Drain Installed | YES |

Completed By: Jearod Ferrette on 08/08/2024

National TAB

Project:08-05-24 FIREBIRDS FORT MILL, SC

AHU/RTU



Diffuser Supply (GRD)

DOAS-1/KITCHEN

| Asset | | | | | | | | | |
|------------|------------|------|------|------------|----|--------|--------|-----------|-------------|
| Asset Name | Location | Type | Size | DESIGN CFM | AK | CFM(1) | CFM(2) | FINAL CFM | % to design |
| SGRD1 | HALLWAY | CDK | 12" | 290 | 1 | 351 | 265 | 304 | 104.8 |
| SGRD2 | DISHWASH | CDK | 12" | 290 | 1 | 313 | 273 | 309 | 106.6 |
| SGRD3 | DISHWASH | CDK | 12" | 290 | 1 | 223 | 289 | 309 | 106.6 |
| SGRD4 | DISHWASH | CDK | 12" | 290 | 1 | 232 | 400 | 304 | 104.8 |
| SGRD5 | DISHWASH | CDK | 12" | 290 | 1 | 200 | 282 | 299 | 103.1 |
| SGRD6 | KITCHEN | CDK | 12" | 290 | 1 | 362 | 314 | 310 | 106.9 |
| SGRD7 | KITCHEN | CDK | 12" | 290 | 1 | 355 | 303 | 302 | 104.1 |
| SGRD8 | KITCHEN | CDK | 12" | 290 | 1 | 351 | 321 | 308 | 106.2 |
| SGRD9 | KITCHEN | CDK | 12" | 290 | 1 | 274 | 302 | 303 | 104.5 |
| SGRD10 | DRIVE THRU | CDK | 12" | 290 | 1 | 312 | 276 | 306 | 105.5 |
| SGRD11 | DRIVE THRU | CDK | 12" | 290 | 1 | 355 | 278 | 301 | 103.8 |
| SGRD12 | DRIVE THRU | CD | 8" | 150 | 1 | 174 | 140 | 155 | 103.3 |
| SGRD13 | KITCHEN | CDK | 12" | 290 | 1 | 298 | 306 | 307 | 105.9 |
| SGRD14 | KITCHEN | CDK | 12" | 290 | 1 | 147 | 234 | 303 | 104.5 |
| SGRD15 | KITCHEN | CDK | 12" | 290 | 1 | 269 | 369 | 302 | 104.1 |
| SGRD16 | KITCHEN | CDK | 12" | 290 | 1 | 257 | 323 | 299 | 103.1 |
| Total | | | | 4500 | | 4473 | 4675 | 4721 | 104.91% |

National TAB

Project: 08-05-24 FIREBIRDS FORT MILL, SC

System/Unit: AHU/RTU



Asset: RTU-1

AREA:

| Unit Data | | |
|---------------------|----------------------|----------------------|
| | Design | Actual |
| MFG | CAPTIVEAIRE | CAPTIVEAIRE |
| Serial Num | - | 6607946 |
| Model Num | CASRTU2-I.200-18-10T | CASRTU2-I.200-18-10T |
| Type | RTU | RTU |
| Configuration | VERTICAL | VERTICAL |
| Num OA Filters 1 | - | 1 |
| OA Filter Size 1 | - | 23.5" x 36.5" |
| Num Final Filter 1 | - | 4 |
| Final Filter Size 1 | - | 15.5" x 19.5" |
| Num Final Filter 2 | - | 4 |
| Final Filter Size 2 | - | 15.5" x 19.5" |

| Motor Data | | |
|----------------|--------|--------|
| | Design | Actual |
| Motor MFG | - | TECO |
| Frame | - | 184T |
| Horsepower | 5HP | 5HP |
| Motor Rpm | 1750 | 1750 |
| Phase | 3 | 3 |
| Rated Voltage | 208V | 208V |
| Rated Amperage | 13.6 | 13.6 |

| Drive Data | |
|--------------------|--------|
| | Actual |
| Motor Sheave Size | DD |
| Motor Bore Size | DD |
| Motor Sheave SetPt | DD |
| Fan Sheave Size | DD |
| Fan Sheave Bore | DD |
| Belt CL Distance | DD |
| Num of Belts | DD |
| Belt Size | DD |
| Belt Alignment | DD |

| Test Data | | |
|------------------------|--------|---------|
| | Design | Actual |
| SF CFM | 3000 | 2932 |
| SF RPM | - | DD/41HZ |
| RA CFM | 2000 | 1907 |
| OA CFM | 1000 | 1025 |
| RL Voltage | - | 211V |
| RL Amperage | - | 8.2 |
| SF Rotation | - | CCW |
| SF System SetPt | - | HZ41 |
| RA Damper Position | - | 4.5V |
| Min OA Damper Position | - | 5.5V |
| Min OA Damper Type | - | ECON |
| OA Enthalpy Setpt | - | S5 |

| Performance Data | | |
|------------------|--------|--------|
| | Design | Actual |
| MA Plenum SP | - | -0.21" |
| Fan Suction SP | - | -0.77" |
| Fan Discharge SP | - | 0.28" |
| Total ESP | 0.500" | 0.49" |
| Fan Total SP | - | 1.05" |

| General | |
|----------------------------|--------|
| | Actual |
| Fan Rotation Correct | YES |
| Unit Filters Clean | YES |
| Condensate Drain Installed | YES |

Completed By: Jearod Ferrette on 08/08/2024

National TAB

Project:08-05-24 FIREBIRDS FORT MILL, SC

AHU/RTU



Diffuser Supply (GRD)

RTU-1/

| Asset | | | | | | | | | |
|------------|----------|------|------|------------|------|--------|--------|-----------|-------------|
| Asset Name | Location | Type | Size | DESIGN CFM | AK | CFM(1) | CFM(2) | FINAL CFM | % to design |
| SGRD1 | DINING | SR | 12X8 | 300 | 1.21 | 393 | 307 | 307 | 102.3 |
| SGRD2 | DINING | SR | 24X8 | 350 | 1.21 | 392 | 364 | 345 | 98.6 |
| SGRD3 | DINING | SR | 12X8 | 300 | 1.21 | 635 | 321 | 304 | 101.3 |
| SGRD4 | DINING | SR | 24X8 | 350 | 1.21 | 424 | 345 | 345 | 98.6 |
| SGRD5 | DINING | SR | 24X8 | 350 | 1.21 | 517 | 351 | 333 | 95.1 |
| SGRD6 | DINING | SR | 24X8 | 350 | 1.21 | 670 | 355 | 337 | 96.3 |
| SGRD7 | BAR | LSD | 12" | 250 | 1 | 55 | 260 | 247 | 98.8 |
| SGRD8 | EXPO | CD | 12" | 350 | 1 | 225 | 283 | 320 | 91.4 |
| SGRD9 | BEVERAGE | CD | 8" | 145 | 1 | 116 | 140 | 135 | 93.1 |
| SGRD10 | BAR | LSD | 12" | 250 | 1 | 62 | 273 | 259 | 103.6 |
| Total | | | | 2995 | | 3489 | 2999 | 2932 | 97.9% |

Completed By: Jearod Ferrette on 08/08/2024

National TAB

Project: 08-05-24 FIREBIRDS FORT MILL, SC

System/Unit: AHU/RTU



Asset: RTU-2

AREA:

| Unit Data | | |
|---------------------|----------------------|----------------------|
| | Design | Actual |
| MFG | CAPTIVEAIRE | CAPTIVEAIRE |
| Serial Num | - | 6607946 |
| Model Num | CASRTU2-I.200-18-10T | CASRTU2-I.200-18-10T |
| Type | RTU | RTU |
| Configuration | VERTICAL | VERTICAL |
| Num OA Filters 1 | - | 1 |
| OA Filter Size 1 | - | 23.5" x 36.5" |
| Num Final Filter 1 | - | 4 |
| Final Filter Size 1 | - | 15.5" x 19.5" |
| Num Final Filter 2 | - | 4 |
| Final Filter Size 2 | - | 15.5" x 19.5" |

| Motor Data | | |
|----------------|--------|--------|
| | Design | Actual |
| Motor MFG | - | TECO |
| Frame | - | 184T |
| Horsepower | 5HP | 5HP |
| Motor Rpm | 1750 | 1750 |
| Phase | 3 | 3 |
| Rated Voltage | 208V | 208V |
| Rated Amperage | 13.6 | 13.6 |

| Drive Data | |
|--------------------|--------|
| | Actual |
| Motor Sheave Size | DD |
| Motor Bore Size | DD |
| Motor Sheave SetPt | DD |
| Fan Sheave Size | DD |
| Fan Sheave Bore | DD |
| Belt CL Distance | DD |
| Num of Belts | DD |
| Belt Size | DD |
| Belt Alignment | DD |

| Test Data | | |
|------------------------|--------|---------|
| | Design | Actual |
| SF CFM | 3000 | 3037 |
| SF RPM | - | DD/47HZ |
| RA CFM | 2000 | 2069 |
| OA CFM | 1000 | 968 |
| RL Voltage | - | 210 |
| RL Amperage | - | 9.5 |
| SF Rotation | - | CCW |
| SF System SetPt | - | 47HZ |
| RA Damper Position | - | 4.7V |
| Min OA Damper Position | - | 5.3V |
| Min OA Damper Type | - | ECON |
| OA Enthalpy Setpt | - | S5 |

| Performance Data | | |
|------------------|--------|--------|
| | Design | Actual |
| MA Plenum SP | - | -0.38" |
| Fan Suction SP | - | -0.96" |
| Fan Discharge SP | - | 0.40" |
| Total ESP | 0.500" | 0.78" |
| Fan Total SP | - | 1.66" |

| General | |
|----------------------------|--------|
| | Actual |
| Fan Rotation Correct | YES |
| Unit Filters Clean | YES |
| Condensate Drain Installed | YES |

Completed By: Jearod Ferrette on 08/08/2024

National TAB

Project:08-05-24 FIREBIRDS FORT MILL, SC

AHU/RTU



Diffuser Supply (GRD)

RTU-2/

| Asset | | | | | | | | | |
|------------|-----------|------|------|------------|----|--------|--------|-----------|-------------|
| Asset Name | Location | Type | Size | DESIGN CFM | AK | CFM(1) | CFM(2) | FINAL CFM | % to design |
| SGRD1 | DINING | SR | 24X8 | 575 | | 810 | 623 | 585 | 101.7 |
| SGRD2 | DINING | SR | 24X8 | 575 | | 883 | 679 | 579 | 100.7 |
| SGRD3 | DINING | SR | 24X8 | 575 | | 758 | 584 | 552 | 96.0 |
| SGRD4 | DINING | SR | 24X8 | 575 | | 561 | 431 | 605 | 105.2 |
| SGRD5 | WOMENS RR | CD | 6" | 90 | | 120 | 92 | 92 | 102.2 |
| SGRD6 | MENS RR | CD | 6" | 90 | | 116 | 89 | 89 | 98.9 |
| SGRD7 | DATA | CD | 8" | 150 | | 171 | 132 | 146 | 97.3 |
| SGRD8 | DATA | SR | 6x6 | 20 | | 123 | 95 | 20 | 100.0 |
| SGRD9 | EXPO | CD | 18" | 350 | | 452 | 348 | 369 | 105.4 |
| Total | | | | 3000 | | 3994 | 3073 | 3037 | 101.23% |

National TAB

Project: 08-05-24 FIREBIRDS FORT MILL, SC

System/Unit: AHU/RTU



Asset: RTU-3

AREA:

| Unit Data | | |
|---------------------|----------------------|----------------------|
| | Design | Actual |
| MFG | CAPTIVEAIRE | CAPTIVEAIRE |
| Serial Num | - | 6607946 |
| Model Num | CASRTU2-I.200-18-10T | CASRTU2-I.200-18-10T |
| Type | RTU | RTU |
| Configuration | VERTICAL | VERTICAL |
| Num OA Filters 1 | - | 1 |
| OA Filter Size 1 | - | 23.5" x 36.5" |
| Num Final Filter 1 | - | 4 |
| Final Filter Size 1 | - | 15.5" x 19.5" |
| Num Final Filter 2 | - | 4 |
| Final Filter Size 2 | - | 15.5" x 19.5" |

| Motor Data | | |
|----------------|--------|--------|
| | Design | Actual |
| Motor MFG | - | TECO |
| Frame | - | 184T |
| Horsepower | 5HP | 5HP |
| Motor Rpm | - | 1750 |
| Phase | 3 | 3 |
| Rated Voltage | 208V | 208V |
| Rated Amperage | - | 13.6 |

| Drive Data | |
|--------------------|--------|
| | Actual |
| Motor Sheave Size | DD |
| Motor Bore Size | DD |
| Motor Sheave SetPt | DD |
| Fan Sheave Size | DD |
| Fan Sheave Bore | DD |
| Belt CL Distance | DD |
| Num of Belts | DD |
| Belt Size | DD |
| Belt Alignment | DD |

| Test Data | | |
|------------------------|--------|---------|
| | Design | Actual |
| SF CFM | 3175 | 3186 |
| SF RPM | - | DD/52HZ |
| RA CFM | 2175 | 2133 |
| OA CFM | 1000 | 1053 |
| RL Voltage | - | 210 |
| RL Amperage | - | 10.6 |
| SF Rotation | - | CCW |
| SF System SetPt | - | 52HZ |
| RA Damper Position | - | 4.8V |
| Min OA Damper Position | - | 5.2V |
| Min OA Damper Type | - | ECON |
| OA Enthalpy Setpt | - | S5 |

| Performance Data | | |
|------------------|--------|--------|
| | Design | Actual |
| MA Plenum SP | - | -0.44" |
| Fan Suction SP | - | -1.07" |
| Fan Discharge SP | - | 0.44" |
| Total ESP | 0.500" | 0.88" |
| Fan Total SP | - | 1.51" |

| General | |
|----------------------------|--------|
| | Actual |
| Fan Rotation Correct | YES |
| Unit Filters Clean | YES |
| Condensate Drain Installed | YES |

Completed By: Jearod Ferrette on 08/08/2024

National TAB

Project:08-05-24 FIREBIRDS FORT MILL, SC

AHU/RTU



Diffuser Supply (GRD)

RTU-3/

| Asset | | | | | | | | | |
|------------|-----------|------|------|------------|------|--------|--------|-----------|-------------|
| Asset Name | Location | Type | Size | DESIGN CFM | AK | CFM(1) | CFM(2) | FINAL CFM | % to design |
| SGRD1 | VESTIBULE | LSD | 8" | 175 | 1 | 134 | 137 | 161 | 92.0 |
| SGRD2 | VESTIBULE | LSD | 8" | 175 | 1 | 137 | 139 | 164 | 93.7 |
| SGRD3 | WAITING | SR | 14X6 | 250 | 0.55 | 285 | 291 | 237 | 94.8 |
| SGRD4 | WAITING | SR | 14X6 | 250 | 0.55 | 230 | 235 | 241 | 96.4 |
| SGRD5 | WAITING | SR | 14X6 | 250 | 0.55 | 250 | 255 | 255 | 102.0 |
| SGRD6 | WAITING | SR | 14X6 | 250 | 0.55 | 232 | 237 | 257 | 102.8 |
| SGRD7 | TO-GO | CD | 8" | 145 | 1 | 115 | 117 | 140 | 96.6 |
| SGRD8 | HOSTESS | SR | 20X6 | 240 | 0.74 | 387 | 395 | 243 | 101.3 |
| SGRD9 | LOUNGE | SR | 20X6 | 240 | 0.74 | 286 | 292 | 235 | 97.9 |
| SGRD10 | LOUNGE | SR | 20X6 | 240 | 0.74 | 303 | 310 | 244 | 101.7 |
| SGRD11 | DINING | SR | 20X6 | 240 | 0.74 | 220 | 224 | 254 | 105.8 |
| SGRD12 | DINING | SR | 20X6 | 240 | 0.74 | 235 | 240 | 250 | 104.2 |
| SGRD13 | DINING | SR | 20X6 | 240 | 0.74 | 241 | 246 | 253 | 105.4 |
| SGRD14 | DINING | SR | 20X6 | 240 | 0.74 | 233 | 238 | 252 | 105.0 |
| Total | | | | 3175 | | 3288 | 3356 | 3186 | 100.35% |

National TAB

Project: 08-05-24 FIREBIRDS FORT MILL, SC

System/Unit: FAN - Exhaust



Asset: EF-DISH1

AREA:

| Unit Data | | |
|---------------|-------------|-------------|
| | Design | Actual |
| MFG | CAPTIVEAIRE | CAPTIVEAIRE |
| Model Num | DU33HFA | DU33HFA |
| Serial Num | - | 6607946 |
| Type | UPBLAST | UPBLAST |
| Configuration | VERTICAL | VERTICAL |

| Motor Data | | |
|------------------|---------|---------|
| | Design | Actual |
| Motor MFG | - | HSSA |
| Frame | - | NL |
| Horsepower | 0.333HP | 0.333HP |
| Motor Rpm | 1625 | 1625 |
| Phase | 1 | 1 |
| Voltage (rated) | 115V | 115V |
| Amperage (rated) | - | 3.8 |
| Service Factor | - | 1.0 |

| Test Data | | |
|------------------|--------|--------------------|
| | Design | Actual |
| CFM | 800 | 835 |
| Fan RPM | 1386 | DAIL SET AT LOWEST |
| Fan Rotation | - | CCW |
| Motor RPM | - | DAIL SET AT LOWEST |
| System SetPt | - | DAIL SET AT LOWEST |
| RL Voltage | - | 119 |
| RL Amperage | - | NA |
| Total ESP | 0.500" | 0.47" |
| Fan Inlet SP | - | -0.47" |
| Fan Discharge SP | - | ATMO |

Completed By: Jearod Ferrette on 08/08/2024

National TAB

Project: 08-05-24 FIREBIRDS FORT MILL, SC

System/Unit: FAN - Exhaust



Asset: KEF3

AREA:

| Unit Data | | |
|---------------|----------|----------|
| | Design | Actual |
| MFG | NA | DELHI |
| Model Num | NA | HRE-20 |
| Serial Num | - | 6607946 |
| Type | UPBLAST | UPBLAST |
| Configuration | VERTICAL | VERTICAL |

| Motor Data | | |
|------------------|--------|--------|
| | Design | Actual |
| Motor MFG | - | CANARM |
| Frame | - | 56 |
| Horsepower | 2HP | 2HP |
| Motor Rpm | 1750 | 1750 |
| Phase | 3 | 3 |
| Voltage (rated) | 208V | 208V |
| Amperage (rated) | - | 6.3 |
| Service Factor | - | 1.15 |

| Drive Data | |
|--------------------|---------------|
| | Actual |
| Motor Sheave Size | 4 1/8" |
| Motor Bore Size | 5/8" |
| Motor Sheave SetPt | 1 TURN OUT |
| Fan Sheave Size | 4-3/4" |
| Fan Sheave Bore | 1-3/16" |
| Belt CL Distance | 11-3/4" |
| Num of Belts | 1 |
| Belt Size | 17 x 915 B-36 |

| Test Data | | |
|---------------|--------|--------|
| | Design | Actual |
| CFM | 3200 | 3107 |
| Fan RPM | - | 2098 |
| Fan Rotation | - | CCW |
| Motor RPM | - | 1498 |
| RL Voltage | - | 208 |
| RL Amperage | - | 4.1 |
| Suction ESP | - | -1.1" |
| Discharge ESP | - | ATMO |
| Total ESP | - | 1.1" |

Completed By: Jearod Ferrette on 08/08/2024

Notes:

8/7-JEAROD- KEF3 IS BELT DRIVEN WITH A VFD. THE SETPT IS AT 52HZ AND GETTING CORRECT FLOW.

Written By: Jearod Ferrette on 08/07/2024

National TAB

Project: 08-05-24 FIREBIRDS FORT MILL, SC

System/Unit: FAN - Exhaust



Asset: KEF4

AREA:PREP

| Unit Data | | |
|---------------|-------------|-------------|
| | Design | Actual |
| MFG | CAPTIVEAIRE | CAPTIVEAIRE |
| Model Num | DU180HFA | DU180HFA |
| Serial Num | - | 6607946 |
| Type | UPBLAST | UPBLAST |
| Configuration | VERTICAL | VERTICAL |

| Motor Data | | |
|------------------|--------|--------|
| | Design | Actual |
| Motor MFG | - | WEG |
| Frame | - | 182/4T |
| Horsepower | 2HP | 2HP |
| Motor Rpm | 1170 | 1170 |
| Phase | 3 | 3 |
| Voltage (rated) | 208V | 208V |
| Amperage (rated) | - | 6.44 |
| Service Factor | - | 1.25 |

| Test Data | | |
|------------------|--------|-----------|
| | Design | Actual |
| CFM | 2200 | 2196 |
| Fan RPM | 1129 | DD/39.9HZ |
| Fan Rotation | - | CCW |
| Motor RPM | - | DD/39.9HZ |
| System SetPt | - | 39.9HZ |
| RL Voltage | - | 209 |
| RL Amperage | - | 5.0 |
| Total ESP | 1.4" | 1.0" |
| Fan Inlet SP | - | -1.0" |
| Fan Discharge SP | - | ATMO |

Completed By: Jearod Ferrette on 08/08/2024

National TAB

Project: 08-05-24 FIREBIRDS FORT MILL, SC

System/Unit: FAN - Exhaust



Asset: KEF-1

AREA:33 LEFT

| Unit Data | | |
|---------------|-------------|-------------|
| | Design | Actual |
| MFG | CAPTIVEAIRE | CAPTIVEAIRE |
| Model Num | DU180HFA | DU180HFA |
| Serial Num | - | 6607946 |
| Type | UPBLAST | UPBLAST |
| Configuration | VERTICAL | VERTICAL |

| Motor Data | | |
|------------------|--------|--------|
| | Design | Actual |
| Motor MFG | - | WEG |
| Frame | - | 182/4T |
| Horsepower | 2 | 2.0 |
| Motor Rpm | 1170 | 1170 |
| Phase | 3 | 3 |
| Voltage (rated) | 208V | 208V |
| Amperage (rated) | - | 6.44 |
| Service Factor | - | 1.25 |

| Test Data | | |
|------------------|--------|-----------|
| | Design | Actual |
| CFM | 2300 | 2379 |
| Fan RPM | 1212 | DD/34.2HZ |
| Fan Rotation | - | CCW |
| Motor RPM | - | DD/34.2HZ |
| System SetPt | - | 34.2HZ |
| RL Voltage | - | 208 |
| RL Amperage | - | 4.5 |
| Total ESP | 1.5" | 1.55" |
| Fan Inlet SP | - | -1.55" |
| Fan Discharge SP | - | ATMO |

Completed By: Jearod Ferrette on 08/08/2024

National TAB

Project: 08-05-24 FIREBIRDS FORT MILL, SC

System/Unit: FAN - Exhaust



Asset: KEF-2

AREA:33 RIGHT

| Unit Data | | |
|---------------|-------------|-------------|
| | Design | Actual |
| MFG | CAPTIVEAIRE | CAPTIVEAIRE |
| Model Num | DU180HFA | DU180HFA |
| Serial Num | - | 6607946 |
| Type | UPBLAST | UPBLAST |
| Configuration | VERTICAL | VERTICAL |

| Motor Data | | |
|------------------|--------|--------|
| | Design | Actual |
| Motor MFG | - | WEG |
| Frame | - | 182/4T |
| Horsepower | 2HP | 2HP |
| Motor Rpm | 1170 | 1170 |
| Phase | 3 | 3 |
| Voltage (rated) | 208V | 230V |
| Amperage (rated) | - | 6.44 |
| Service Factor | - | 1.25 |

| Test Data | | |
|------------------|--------|-----------|
| | Design | Actual |
| CFM | 2300 | 2229 |
| Fan RPM | 1212 | DD/38.2HZ |
| Fan Rotation | - | CCW |
| Motor RPM | - | DD/38.2HZ |
| System SetPt | - | 38.2HZ |
| RL Voltage | - | 208V |
| RL Amperage | - | 4.5 |
| Total ESP | 1.5" | 1.3" |
| Fan Inlet SP | - | -1.3" |
| Fan Discharge SP | - | ATM |

Completed By: Jearod Ferrette on 08/08/2024

National TAB

Project: 08-05-24 FIREBIRDS FORT MILL, SC

System/Unit: FAN - Exhaust



Asset: TEF1

AREA:RESTROOMS

| Unit Data | | |
|---------------|-------------|-------------|
| | Design | Actual |
| MFG | GREENHECK | PENNBERRY |
| Model Num | G-090 | DX10R |
| Serial Num | - | H30686001 |
| Type | CENTRIFUGAL | CENTRIFUGAL |
| Configuration | VERTICAL | VERTICAL |

| Motor Data | | |
|------------------|--------|--------|
| | Design | Actual |
| Motor MFG | - | FASCO |
| Frame | - | NL |
| Horsepower | 1/6 HP | 1/6 HP |
| Motor Rpm | 1550 | 1550 |
| Phase | 1 | 1 |
| Voltage (rated) | 115V | 115V |
| Amperage (rated) | - | 1.80 |
| Service Factor | - | NL |

| Test Data | | |
|------------------|--------|--------------------|
| | Design | Actual |
| CFM | 200 | 417 |
| Fan RPM | - | DD |
| Fan Rotation | - | CCW |
| Motor RPM | - | DD |
| System SetPt | - | DIAL SET AT LOWEST |
| RL Voltage | - | 119V |
| RL Amperage | - | NA |
| Total ESP | 0.3" | 0.26" |
| Fan Inlet SP | - | -0.26" |
| Fan Discharge SP | - | ATMO |

Completed By: Jearod Ferrette on 08/08/2024

Notes:

8/6-JEAROD-RESTROOM FAN HAS HIGH FLOW. 125% OVER DESIGN (450 CFM /200 CFM). SPEED DIAL AT MIN. BALANCED PROPORTIONATELY.

Written By: Jearod Ferrette on 08/08/2024

National TAB

Project:08-05-24 FIREBIRDS FORT MILL, SC

FAN - Exhaust



Diffuser Ret/Exh (GRD)

TEF1/RESTROOMS

| Asset | | | | | | | | | |
|------------|-----------|------|------|------------|----|--------|--------|-----------|-------------|
| Asset Name | Location | Type | Size | DESIGN CFM | AK | CFM(1) | CFM(2) | FINAL CFM | % to design |
| EGRD1 | WOMENS RR | EG | 8" | 100 | 1 | 217 | 220 | 208 | 208.0 |
| EGRD2 | MENS RR | EG | 8" | 100 | 1 | 197 | 196 | 209 | 209.0 |
| Total | | | | 200 | | 414 | 416 | 417 | 208.5% |

National TAB

Project: 08-05-24 FIREBIRDS FORT MILL, SC

System/Unit: FAN - Supply



Asset: MUA1

AREA:COOKLINE

| Unit Data | | |
|---------------|------------------|------------------|
| | Design | Actual |
| MFG | CAPTIVEAIRE | CAPTIVEAIRE |
| Model Num | A2-D.500-20D-MPU | A2-D.500-20D-MPU |
| Serial Num | - | 6607946 |
| Type | MUA | MUA |
| Configuration | VERTICAL | VERTICAL |

| Test Data | | |
|-----------------|--------|-----------|
| | Design | Actual |
| CFM | 4000 | 4253 |
| SF RPM | 1723 | DD/55.1HZ |
| Motor RPM | - | DD/55.1HZ |
| SF System SetPt | - | 55.1HZ |
| RL Voltage | - | 209V |
| RL Amperage | - | 9.8 |

| Motor Data | | |
|------------------|--------|--------|
| | Design | Actual |
| Motor MFG | - | TECO |
| Frame | - | 184T |
| Horsepower | 5HP | 5HP |
| Motor Rpm | 1750 | 1750 |
| Phase | 3 | 3 |
| Voltage (rated) | 208V | 208V |
| Amperage (rated) | - | 13.6 |
| Service Factor | - | 1.15 |

| General | |
|----------------------|--------|
| | Actual |
| Fan Rotation Correct | CCW |

| Gas Heat | | |
|---------------------------|--------|---------|
| | Design | Actual |
| Heater Operates (y/n) | - | NOTES |
| Flame Status (pass/fail) | - | NOTES |
| Inlet Air Temp SetPt | 55 | 55 |
| Discharge Air Temp SetPt | 60 | 60 |
| Air Flow Switch SP Actual | - | -0.4040 |

Completed By: Jearod Ferrette on 08/08/2024

Notes:

8/5-GAS OFF AT MUA

Written By: Jearod Ferrette on 08/05/2024

National TAB

Project: 08-05-24 FIREBIRDS FORT MILL, SC

System/Unit: Kitchen Hood Type I



Asset: HD-38

AREA:GRILL

| Unit Data | | |
|------------------|------------------|------------------|
| | Design | Actual |
| MFG | CAPTIVEAIRE | CAPTIVEAIRE |
| Model Num | 6030 ND-2 | 6030 ND-2 |
| Job / Serial Num | - | 6607946 |
| Type | TYPE I CANOPY | TYPE I CANOPY |
| Hood length | 98" | 98" |
| Hood Width | 60" | 60" |

| Test Data Exhaust | | |
|-------------------------|------------------|------------------|
| | Design | Actual |
| Filter Type | CAPTRATE SOLO | CAPTRATE SOLO |
| Filter Size 1 | 16X20 | 16X20 |
| Filter Qty 1 | 6 | 6 |
| Filter AK factor size 1 | 2.08 | 2.08 |
| Filter Total AK Area | 12.48 | 12.48 |
| Filter1 FPM | - | 254 |
| Filter2 FPM | - | 238 |
| Filter3 FPM | - | 246 |
| Filter4 FPM | - | 261 |
| Filter5 FPM | - | 253 |
| Filter6 FPM | - | 243 |
| Filter Ave FPM(corr) | - | 249 |
| CFM | 3200 | 3107 |

| Cooking Equipment | |
|-------------------|-----------------------|
| | Actual |
| Item 1 | COOLER/CHOPPING BLOCK |
| Item 2 | GRILL |

Completed By: Jearod Ferrette on 08/05/2024

Notes:
8/5- VFD 3 & 4 ARE SWAPPED. TO CONTROL HD4 USE VFD 3 AND HD3 USE VFD 4

Written By: Jearod Ferrette on 08/05/2024

National TAB

Project: 08-05-24 FIREBIRDS FORT MILL, SC

System/Unit: Kitchen Hood Type I



Asset: HD-33 L1

AREA:

| Unit Data | | |
|----------------------|-----------------|-----------------|
| | Design | Actual |
| MFG | CAPTIVEAIRE | CAPTIVEAIRE |
| Model Num | 5424 ND-2-PSP-F | 5424 ND-2-PSP-F |
| Job / Serial Num | - | 6607946 |
| Type | TYPE I CANOPY | TYPE I CANOPY |
| Hood length | 138" | 138" |
| Hood Width | 54" | 54" |
| Supply Plenum Width | 16" | 16" |
| Supply Plenum Length | 150" | 150" |

| Test Data Supply | | |
|------------------|--------|--------|
| | Design | Actual |
| Total AK Area | 16.67" | 16.67" |
| Kv factor (Vel) | 0.92" | 0.92" |
| Num of Readings | - | 9 |
| Reading1 FPM | - | 105 |
| Reading2 FPM | - | 106 |
| Reading3 FPM | - | 119 |
| Reading4 FPM | - | 128 |
| Reading5 FPM | - | 126 |
| Reading6 FPM | - | 119 |
| Reading7 FPM | - | 125 |
| Reading8 FPM | - | 126 |
| Reading9 FPM | - | 139 |
| Ave FPM(corr) | - | 121 |
| CFM | 2000 | 1856 |

| Test Data Exhaust | | |
|-------------------------|---------------|---------------|
| | Design | Actual |
| Filter Type | CAPTRATE SOLO | CAPTRATE SOLO |
| Filter Size 1 | 16X20 | 16X20 |
| Filter Qty 1 | 8 | 8 |
| Filter AK factor size 1 | 2.08 | 2.08 |
| Filter Total AK Area | 16.64 | 16.64 |
| Filter1 FPM | - | 143 |
| Filter2 FPM | - | 141 |
| Filter3 FPM | - | 146 |
| Filter4 FPM | - | 153 |
| Filter5 FPM | - | 148 |
| Filter6 FPM | - | 141 |
| Filter7 FPM | - | 141 |
| Filter8 FPM | - | 133 |
| Filter Ave FPM(corr) | - | 143 |
| CFM | 2300 | 2379 |

| Cooking Equipment | |
|-------------------|--------|
| | Actual |
| Item 1 | COOLER |
| Item 2 | FRYER |
| Item 3 | GRILL |

Completed By: Jearod Ferrette on 08/05/2024

National TAB

Project: 08-05-24 FIREBIRDS FORT MILL, SC

System/Unit: Kitchen Hood Type I



Asset: HD-33 R1

AREA:

| Unit Data | | |
|----------------------|-----------------|-----------------|
| | Design | Actual |
| MFG | CAPTIVEAIRE | CAPTIVEAIRE |
| Model Num | 5424 ND-2-PSP-F | 5424 ND-2-PSP-F |
| Job / Serial Num | - | 6607946 |
| Type | TYPE I CANOPY | TYPE I CANOPY |
| Hood length | 138" | 138" |
| Hood Width | 54" | 54" |
| Supply Plenum Width | 16" | 16" |
| Supply Plenum Length | 138" | 138" |

| Test Data Supply | | |
|------------------|--------|--------|
| | Design | Actual |
| Total AK Area | 15.33 | 15.33 |
| Kv factor (Vel) | 0.92 | 0.92 |
| Num of Readings | - | 9 |
| Reading1 FPM | - | 180 |
| Reading2 FPM | - | 146 |
| Reading3 FPM | - | 198 |
| Reading4 FPM | - | 163 |
| Reading5 FPM | - | 162 |
| Reading6 FPM | - | 183 |
| Reading7 FPM | - | 163 |
| Reading8 FPM | - | 149 |
| Reading9 FPM | - | 184 |
| Ave FPM(corr) | - | 170 |
| CFM | 2000 | 2397 |

| Test Data Exhaust | | |
|-------------------------|---------------|---------------|
| | Design | Actual |
| Filter Type | CAPTRATE SOLO | CAPTRATE SOLO |
| Filter Size 1 | 16X20 | 16X20 |
| Filter Qty 1 | 8 | 8 |
| Filter AK factor size 1 | 2.08 | 2.08 |
| Filter Total AK Area | 16.64 | 16.64 |
| Filter1 FPM | - | 127 |
| Filter2 FPM | - | 133 |
| Filter3 FPM | - | 138 |
| Filter4 FPM | - | 147 |
| Filter5 FPM | - | 143 |
| Filter6 FPM | - | 137 |
| Filter7 FPM | - | 129 |
| Filter8 FPM | - | 122 |
| Filter Ave FPM(corr) | - | 134 |
| CFM | 2300 | 2229 |

| Cooking Equipment | |
|-------------------|-----------------------|
| | Actual |
| Item 1 | COOLER/CHOPPING BLOCK |
| Item 2 | GRILL |
| Item 3 | FOOD HEATER/OVEN |

Completed By: Jearod Ferrette on 08/05/2024

National TAB

Project: 08-05-24 FIREBIRDS FORT MILL, SC

System/Unit: Kitchen Hood Type I



Asset: HD-70

AREA:PREP

| Unit Data | | |
|------------------|------------------|------------------|
| | Design | Actual |
| MFG | CAPTIVEAIRE | CAPTIVEAIRE |
| Model Num | 6024 ND-2 | 6024 ND-2 |
| Job / Serial Num | - | 6607946 |
| Type | TYPE I CANOPY | TYPE I CANOPY |
| Hood length | 132" | 132" |
| Hood Width | 60" | 60" |

| Test Data Exhaust | | |
|-------------------------|------------------|------------------|
| | Design | Actual |
| Filter Type | CAPTRATE SOLO | CAPTRATE SOLO |
| Filter Size 1 | 16X20 | 16X20 |
| Filter Qty 1 | 8 | 8 |
| Filter AK factor size 1 | 2.08 | 2.08 |
| Filter Total AK Area | 16.64 | 16.64 |
| Filter1 FPM | - | 118 |
| Filter2 FPM | - | 126 |
| Filter3 FPM | - | 122 |
| Filter4 FPM | - | 138 |
| Filter5 FPM | - | 149 |
| Filter6 FPM | - | 137 |
| Filter7 FPM | - | 131 |
| Filter8 FPM | - | 133 |
| Filter Ave FPM(corr) | - | 132 |
| CFM | 2200 | 2196 |

| Cooking Equipment | |
|-------------------|---------|
| | Actual |
| Item 1 | GRILL |
| Item 2 | SKILLET |

Completed By: Jearod Ferrette on 08/06/2024

Notes:
8/5- VFD 3 & 4 ARE SWAPPED. TO CONTROL HD4 USE VFD 3 AND HD3 USE VFD 4

Written By: Jearod Ferrette on 08/05/2024

