

DEMOLITION NOTES:

1. UN-USED AND DAMAGED MECHANICAL EQUIPMENT AND CONTROLS CURRENTLY SERVING TENANT SPACE ARE TO BE REMOVED, EXCEPT THOSE SHOWN ON PLANS TO REMAIN. THIS INCLUDES ALL ROOF-MT. CONDENSERS, WALL A/C UNITS, ROOF/WALL MOUNTED FANS, ETC. CONSULT OWNER PRIOR TO REMOVAL FROM JOBSITE.
2. ALL EXISTING DUCTS, HANGERS AND GRILLES TO BE REMOVED, EXCEPT THOSE SHOWN ON PLANS TO REMAIN.
3. ALL OPENINGS IN WALLS PENETRATED BY DUCTS OR PIPES THAT HAVE BEEN REMOVED ARE TO BE PATCHED & SEALED BY THE G.C.
4. ALL OPENINGS IN ROOFS PENETRATED BY DUCTS, PIPES OR OTHER MECHANICAL EQUIPMENT TO BE PATCHED AND SEALED BY G.C.

WORK NOTES:

1. REMOVE EXISTING GAS UNIT HEATER AND ASSOCIATED RELIEF VENTS LOCATED IN EXPANSION AREA. CAP GAS PIPING FOR FUTURE USE DURING UPFIT/RENOVATION PHASE. FIELD VERIFY EXISTING GAS LOADS OF EQUIPMENT, GAS PIPE SIZES AND NOTIFY ENGINEER.
2. REMOVE THE EXISTING EXHAUST FAN LOCATED IN THE IT CLOSET, INCLUDING ALL EXHAUST GRILLES AND DUCTWORK, SERVING SMALL CLOSET AREA.
3. REMOVE EXISTING INLINE EXHAUST FAN, INCLUDING ALL EXHAUST GRILLES AND DUCTWORK, SERVING SMALL CLOSET AREA.
4. FIELD VERIFY 6" RETURN DUCTWORK SERVING TENANT SPACE. REMOVE AND CAP IF NECESSARY. PATCH WALL PENETRATION FROM RETURN GRILLES.
5. REMOVE AND REPLACE RETURN GRILLES IN ROOM. SEE SHEET M101 AND M801 FOR SCHEDULED REPLACEMENTS.



BUFFALO SMALL ANIMAL HOSPITAL
1100 MAIN ST
BUFFALO, NY



RLARCHITECTURE, PLLC

PO Box 161
Davidson, NC 28036

ph. 704.756.3540
RLArchitecture.com



300 Pearl Street, Suite 130
Buffalo, NY 14202
716-551-6281
labellapc.com



DRAWING TITLE:
DEMO FIRST FLOOR DUCTWORK PLAN

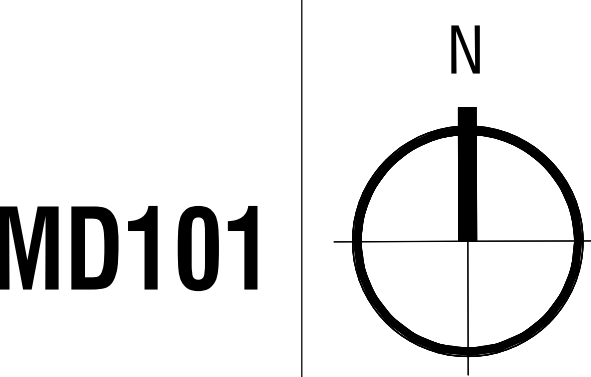
THIS DRAWING IS THE PROPERTY OF RLArchitecture, pllc AND IS NOT TO BE COPIED OR REPRODUCED IN PART OR WHOLE WITHOUT THE EXPRESSED WRITTEN PERMISSION OF RLArchitecture, pllc.

FOR CONSTRUCTION

REVISIONS	
NO.	DESCRIPTION

DATE: 12.16.2022
PROJECT #: 2022.69
SCALE: AS NOTED
DRAWN BY: MM

1 FIRST FLOOR DEMOLITION PLAN
MD101 1/4" = 1'-0"



- KEY NOTES:**
- 1 ROUTE 12" EXHAUST DUCT THROUGH EXTERIOR WALL AND TERMINATE W/ WALL LOUVER. SIZE LOUVERS FOR 18"x14" WALL LOUVERS TO BE RUSKIN MODEL EL13750X OR APPROVED EQUAL. PROVIDE W/ BIRD SCREEN & BACKDRAFT DAMPER. COORDINATE FINISH W/ ARCHITECT. FIELD COORDINATE EXACT LOCATION. MAINTAIN 10'-0" MIN. AWAY FROM C.A. INTAKES. MAINTAIN 3'-0" MIN. AWAY FROM BUILDING OPENINGS.
 - 2 ROUTE 12" O.A. DUCT THROUGH EXTERIOR WALL AND TERMINATE W/ WALL LOUVER. SIZE LOUVERS FOR 18"x14" WALL LOUVERS TO BE RUSKIN MODEL EL13750X OR APPROVED EQUAL. PROVIDE W/ INSECT SCREEN, BACKDRAFT & MANUAL BALANCING DAMPER. COORDINATE FINISH W/ ARCHITECT. FIELD COORDINATE EXACT LOCATION. MAINTAIN 10'-0" FROM EXHAUST OUTLETS & PLUMBING VENTS.
 - 3 M.C. SHALL MOUNT MECHANICAL EQUIPMENT AS HIGH AS POSSIBLE AND MAINTAIN MANUFACTURER'S RECOMMENDED CLEARANCES.
 - 4 TIE O.A. DUCT INTO RETURN DUCT. PROVIDE BACKDRAFT DAMPER AND MANUAL BALANCING DAMPER.
 - 5 ROUTE CONDENSATE FROM AHU TO DAYLIGHT. PROVIDE W/ CONDENSATE PUMP IF NECESSARY. TERMINATE TO SPLASH BLOCK.
 - 6 MOUNT IDU-1 4" BELOW CEILING. ROUTE 1" CONDENSATE TO DAYLIGHT. PROVIDE W/ CONDENSATE PUMP IF NECESSARY. TERMINATE TO SPLASH BLOCK.
 - 7 PROVIDE SECONDARY 4" DRYER LINT TRAP FOR NEW STACKED WASHER-DRYER (FRANTCH MODEL DR1740). FIELD VERIFY EXISTING CONDITIONS OF DRYER EXHAUST. CLEAN OUT AND REPAIR/REPLACE DUCTWORK AS NEEDED. NOTIFY ENGINEER OF ANY DISCREPANCIES.
 - 8 FIELD COORDINATE EXACT LOCATION AND SIZE OF HEAT PUMP ON ROOF. INSTALL PER MANUFACTURER INSTRUCTIONS AND REFRIGERANT LINESET LENGTH ALLOWANCES.



1 FIRST FLOOR DUCTWORK PLAN
M101 1/4" = 1'-0"



BUFFALO SMALL ANIMAL HOSPITAL
1100 MAIN ST
BUFFALO, NY



RLARCHITECTURE, PLLC
PO Box 161
Davidson, NC 28036
ph. 704.756.3540
RLArchitecture.com



300 Pearl Street, Suite 130
Buffalo, NY 14202
716-551-6281
labellapc.com



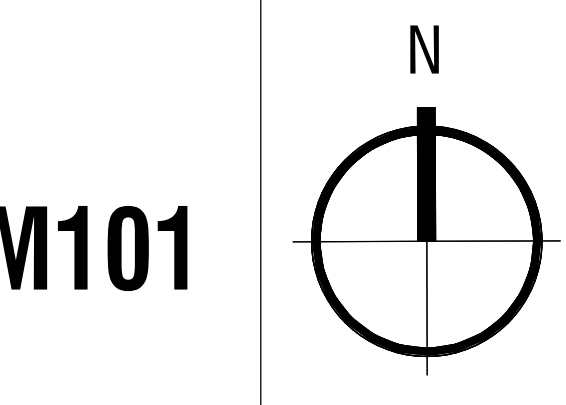
DRAWING TITLE:
FIRST FLOOR DUCTWORK PLAN

THIS DRAWING IS THE PROPERTY OF RLArchitecture, pllc AND IS NOT TO BE COPIED OR REPRODUCED IN PART OR WHOLE WITHOUT THE EXPRESSED WRITTEN PERMISSION OF RLArchitecture, pllc.

FOR CONSTRUCTION

REVISIONS	
NO.	DESCRIPTION

DATE: 12.16.2022
PROJECT #: 2022.69
SCALE: AS NOTED
DRAWN BY: MM





NVA
BUFFALO SMALL ANIMAL HOSPITAL
 1100 MAIN ST
 BUFFALO, NY



RLARCHITECTURE, PLLC

PO Box 161
 Davidson, NC 28036

ph. 704.756.3540
 RLArchitecture.com



300 Pearl Street, Suite 130
 Buffalo, NY 14202
 716-551-6281
 labellapp.com



MECHANICAL DETAILS

DRAWING TITLE:

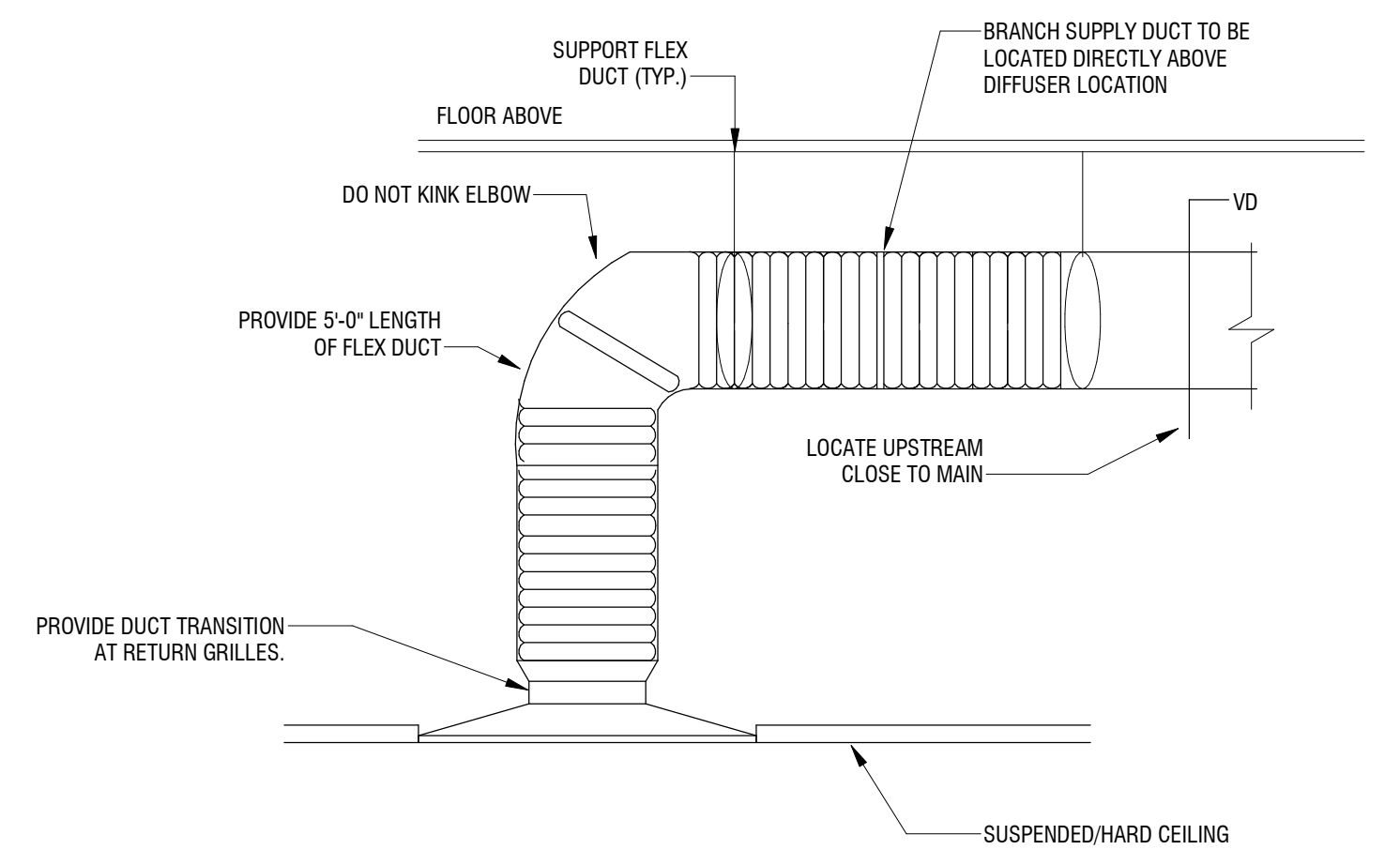
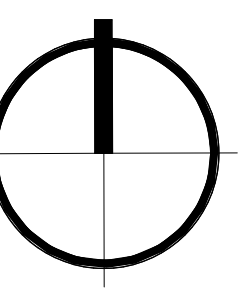
THIS DRAWING IS THE PROPERTY OF RLArchitecture, pllc AND IS NOT TO BE COPIED OR REPRODUCED IN PART OR WHOLE WITHOUT THE EXPRESSED WRITTEN PERMISSION OF RLArchitecture, pllc.

FOR CONSTRUCTION

REVISIONS		
NO.	DATE	DESCRIPTION

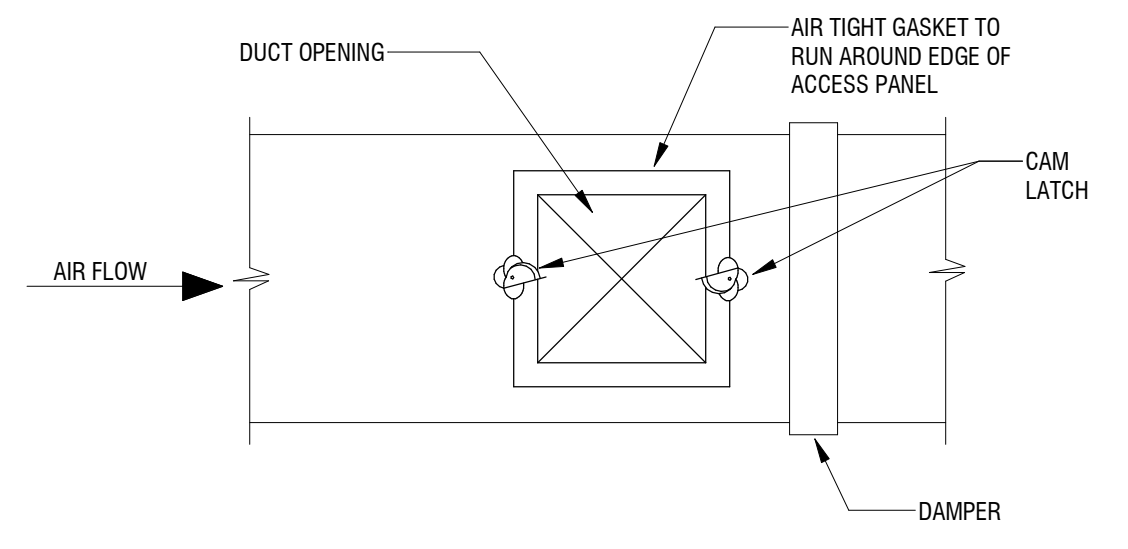
DATE: 12.16.2022
 PROJECT #: 2022.69
 SCALE: AS NOTED
 DRAWN BY: MM

M501



- NOTES:**
1. ALL DUCTWORK AND DIFFUSER CONNECTIONS SHALL MEET SMACNA STANDARDS.
 2. EXCESSIVE USE OF FLEX DUCTWORK AND OFFSETS IN EXCESS OF 45 DEGREES WILL BE REJECTED AT TIME OF PROJECT INSPECTION AND RE-INSTALLED AT THE CONTRACTORS EXPENSE.
 3. COORDINATE DIFFUSER AND BRANCH DUCTWORK LOCATIONS WITH REFLECTED CEILING PLAN.
 4. PROVIDE RETURN GRILLES WITH FLEX DUCT IN SIMILAR FASHION (FOR PLENUM RETURN, WHEN SHOWN ON PLANS TO BE DUCTED RETURN, CONNECT TO HARD DUCT).

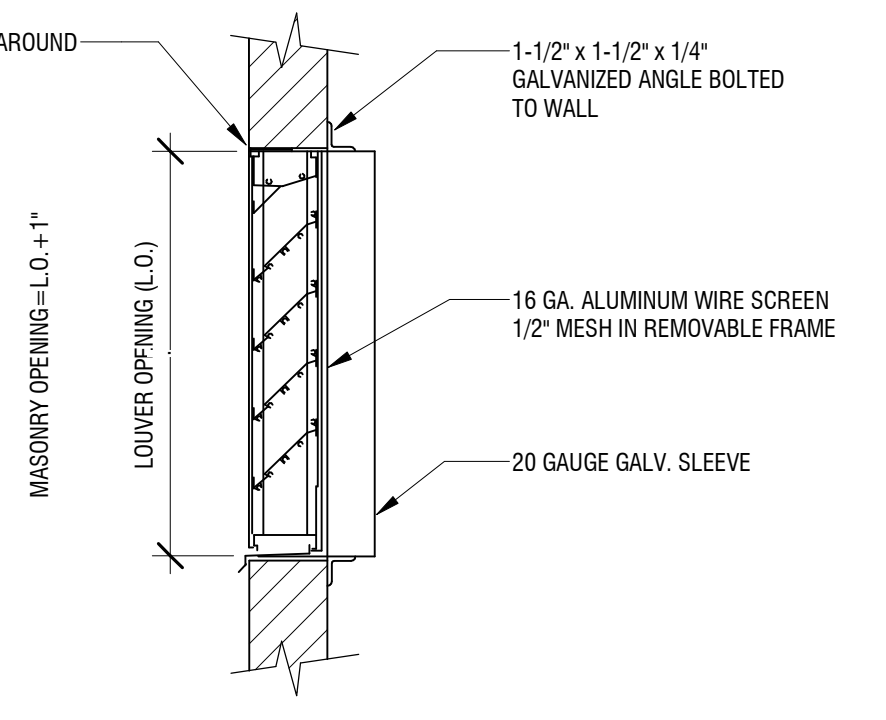
4 DUCT - AT - DIFFUSER AND RETURN GRILLE CONNECTION DETAIL
 M501 NOT TO SCALE



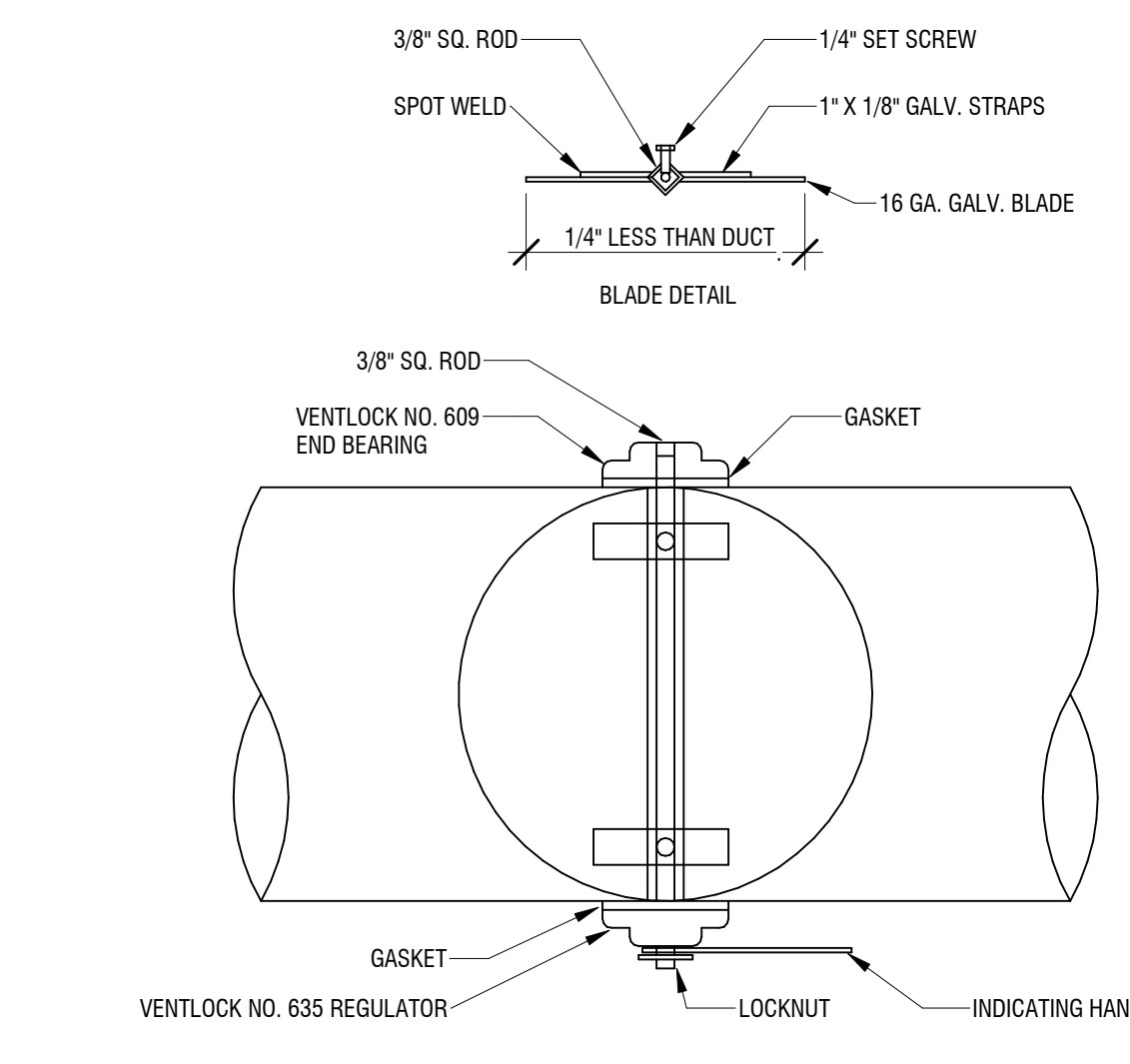
ACCESS PANEL SIZE SCHEDULE	
DUCT SIZE	ACCESS PANEL SIZE
6" TO 15"	10" W x (DAMPER DEPTH-2") D
15" TO 21"	12" W x (DAMPER DEPTH-2") D
21" AND ABOVE	18" W x (DAMPER DEPTH-2") D

ALL OTHER ACCESS PANELS TO BE A MINIMUM OF 15" x 15" WHERE DUCT SIZE ALLOWS. USE FOUR CAM LATCHES ON PANELS LARGER THAN 18" x 18" SIZE.

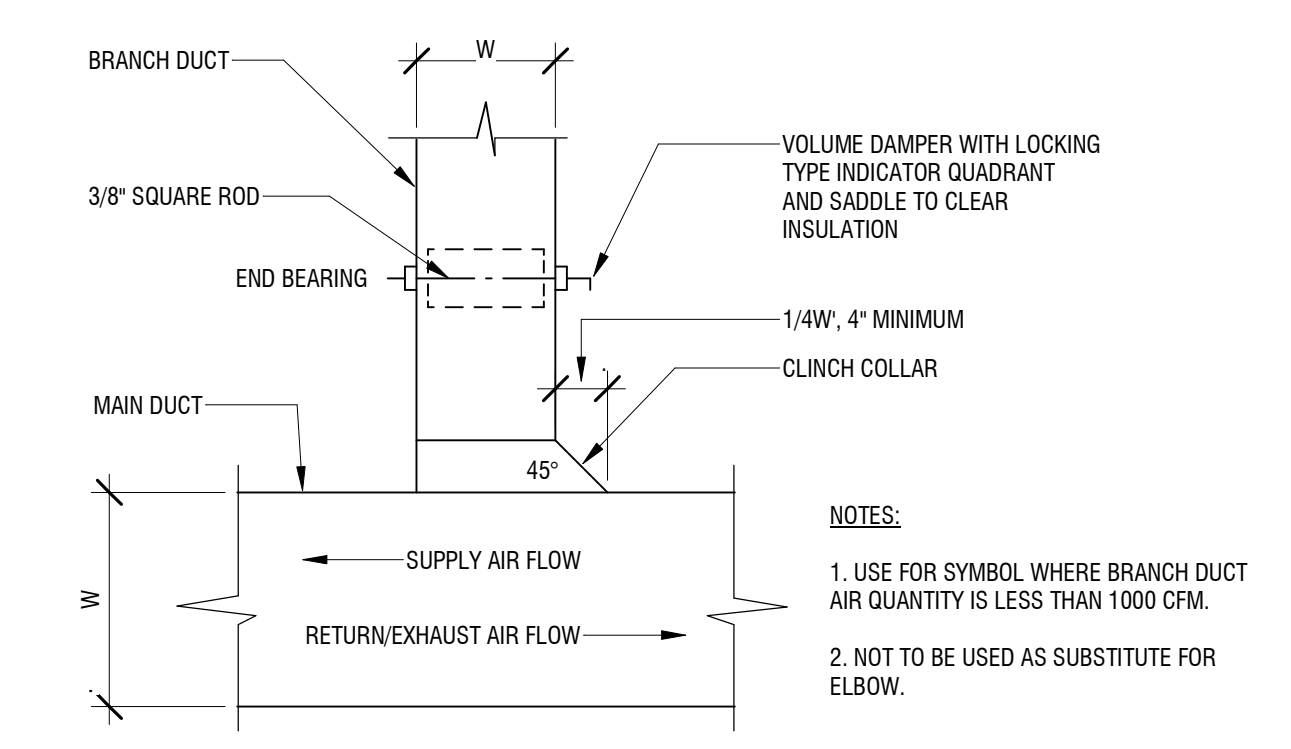
3 DUCT - ACCESS PANEL DETAIL
 M501 NOT TO SCALE



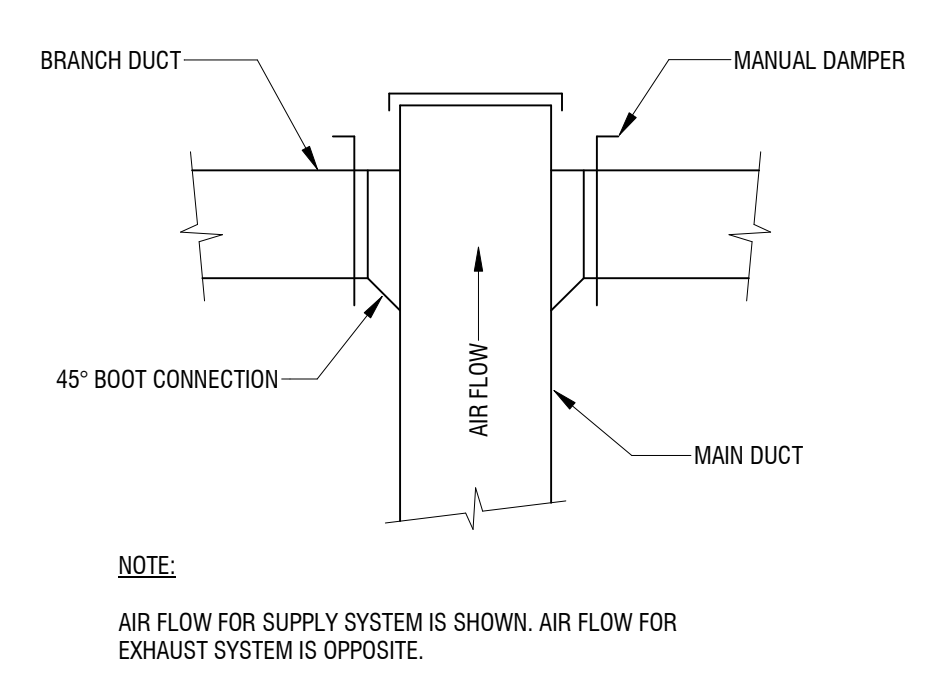
2 AE - LOUVER DETAIL
 M501 NOT TO SCALE



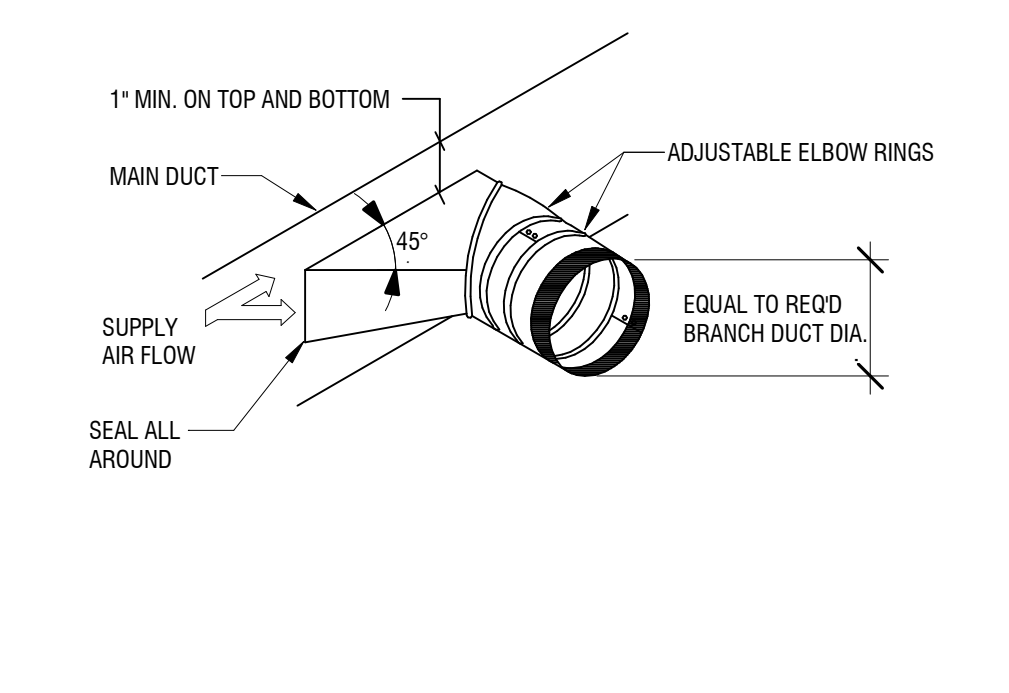
8 DUCT - ROUND VOLUME DAMPER DETAIL
 M501 NOT TO SCALE



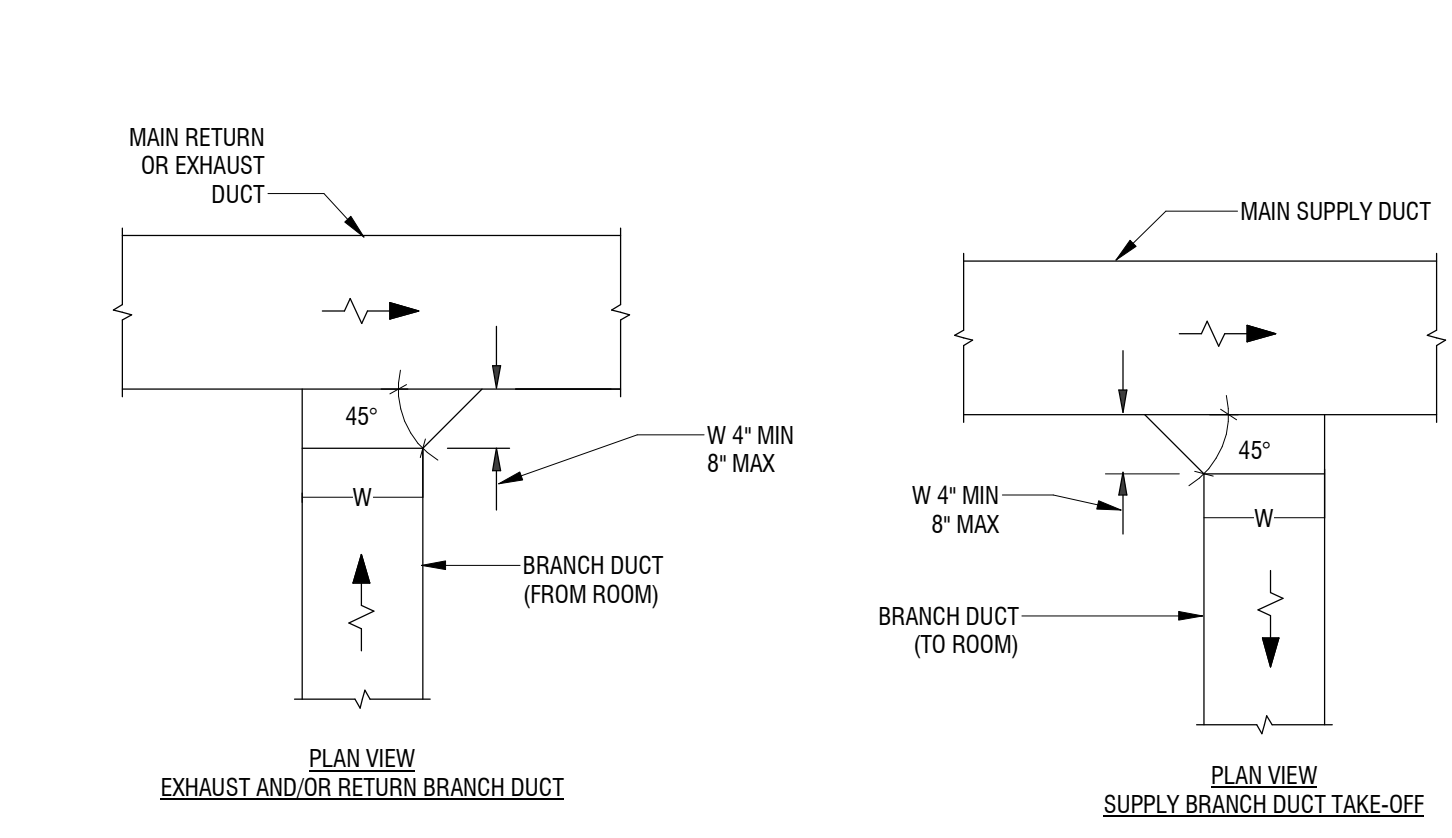
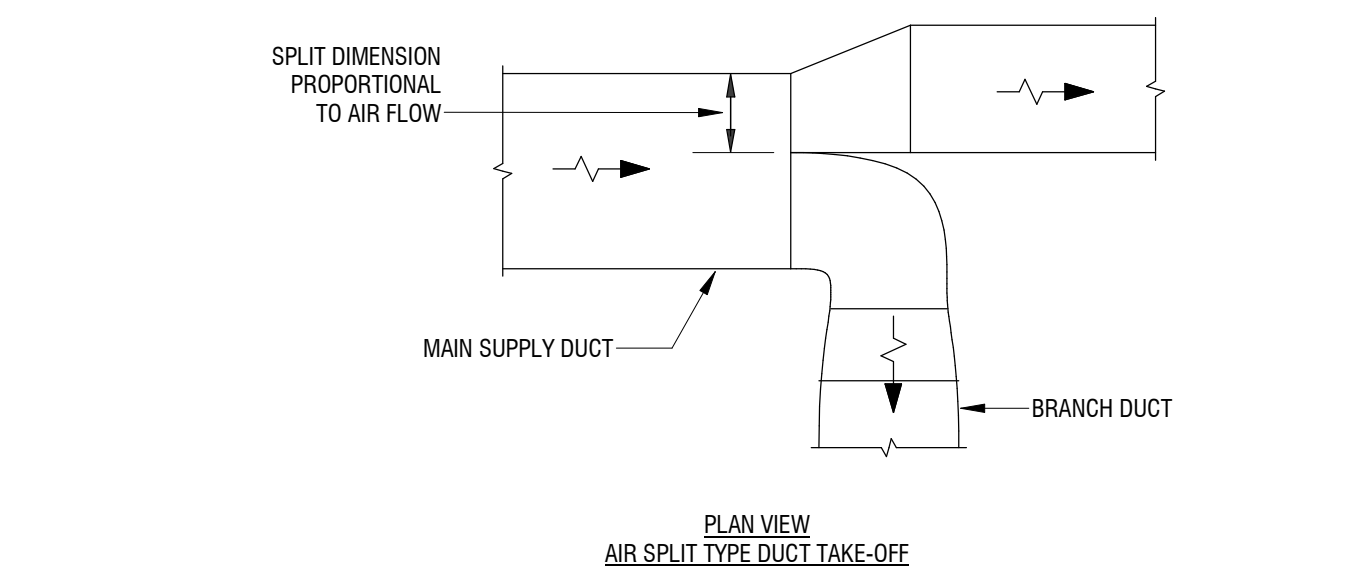
7 DUCT - RECTANGULAR BRANCH CONNECTION DETAIL
 M501 NOT TO SCALE



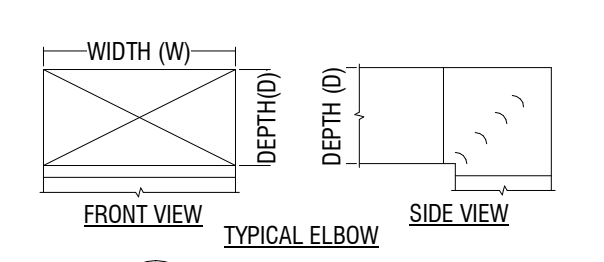
6 DUCT - DUCT TEE BRANCH TAKE-OFF DETAIL
 M501 NOT TO SCALE



5 DUCT - BRANCH TAKE-OFF DETAIL
 M501 NOT TO SCALE

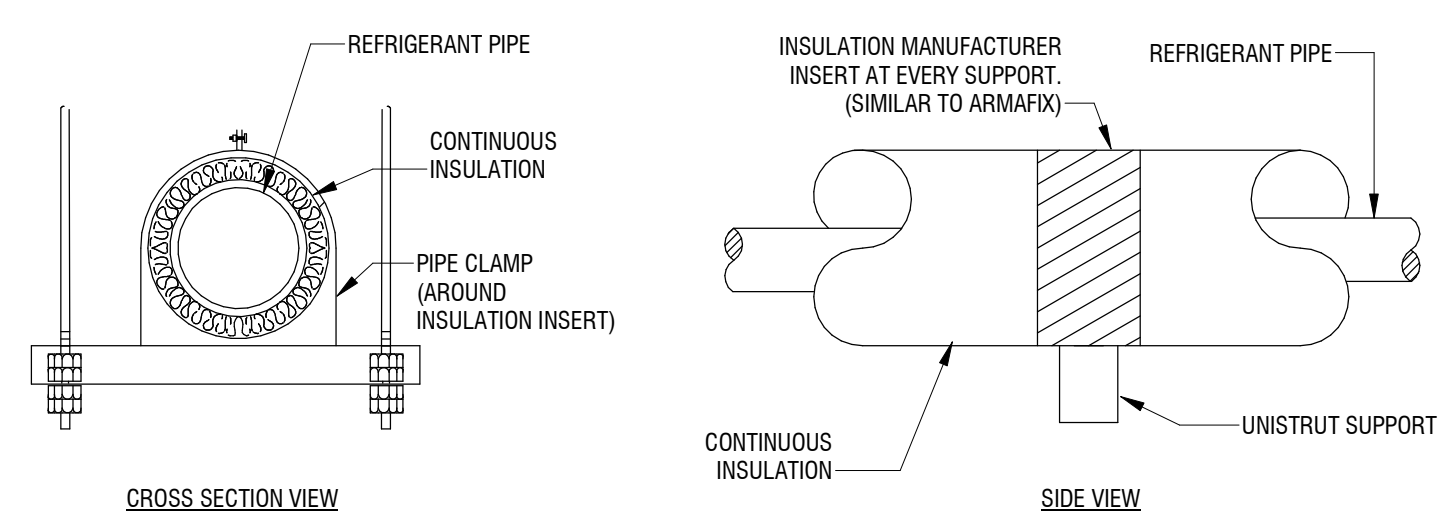


11 DUCT - TYPICAL DUCTWORK DETAILS
 M501 NOT TO SCALE



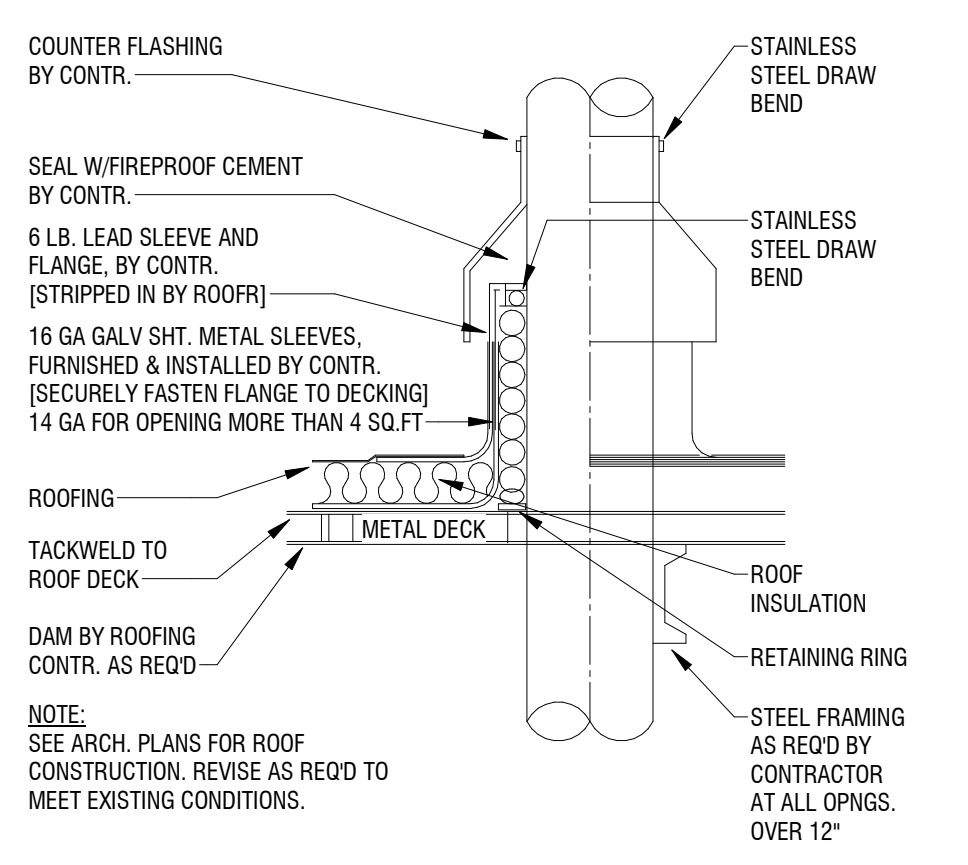
- NOTES:**
1. ALL SQUARE OR RECTANGULAR ELBOWS SHALL HAVE ONE OF THE TWO TYPES OF TURNING VANES SHOWN ABOVE. SINGLE VANE ELBOWS SHALL NOT BE PERMITTED.
 2. CONSTRUCT, SUPPORT, AND FASTEN ALL VANES AS RECOMMENDED BY SMACNA.
 3. ALL SQUARE OR RECTANGULAR ELBOWS SHOWN ON PLANS FOR EXHAUST OR RETURN DUCT MAY BE MADE RADIUS ELBOWS, PROVIDED THAT SPACE PERMITS RADIUS INSTALLATION.
 4. ALL SQUARE OR RECTANGULAR ELBOWS SHOWN ON PLANS FOR SUPPLY DUCT MAY BE MADE RADIUS ELBOWS, PROVIDED THAT SPACE PERMITS RADIUS INSTALLATION AND/OR THERE IS NO OUTLET OR TAKE-OFF WITHIN 5D ON THE DOWNSTREAM SIDE OF THE ELBOW.

10 DUCT - SQUARE OR RECTANGULAR ELBOWS
 M501 NOT TO SCALE

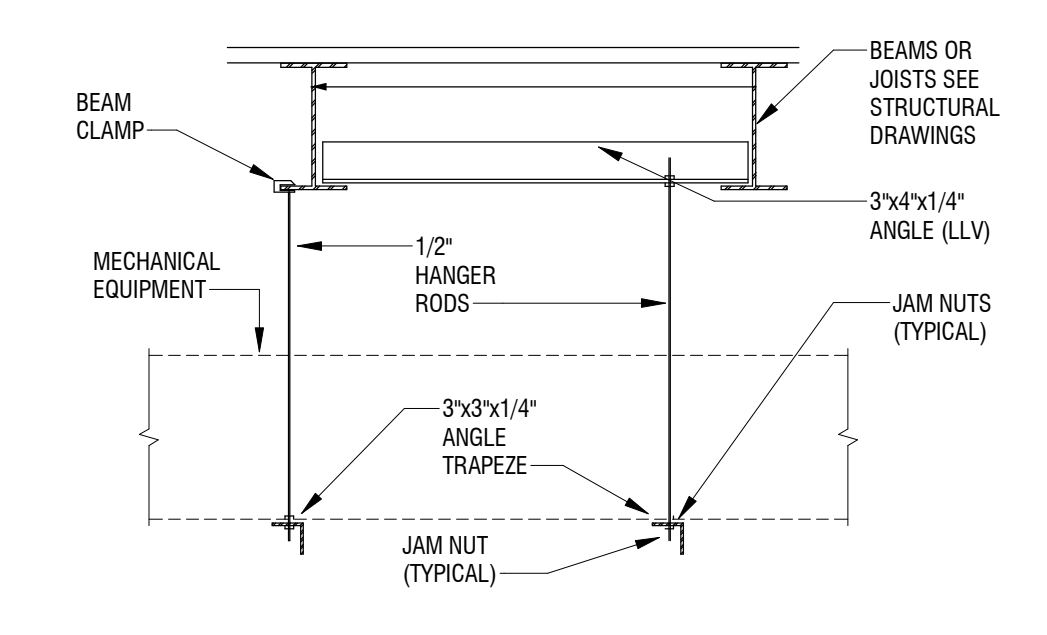


- NOTES:**
1. PROVIDE INSULATION CONTINUOUS THROUGH SUPPORT.
 2. PROVIDE MANUFACTURERS INSULATION INSERT AT EACH PIPE CLAMP.
 3. PROVIDE CLAMP AROUND INSULATION INSERT.
 4. INSTALL INSULATION/INSERT PER MANUFACTURERS RECOMMENDATION.
 5. PROVIDE PVC JACKET AROUND PIPE IN ALL EXPOSED LOCATIONS AND EXTERIOR INSTALLATION.

9 PIPE - REFRIGERANT PIPING SUPPORT DETAIL
 M501 NOT TO SCALE

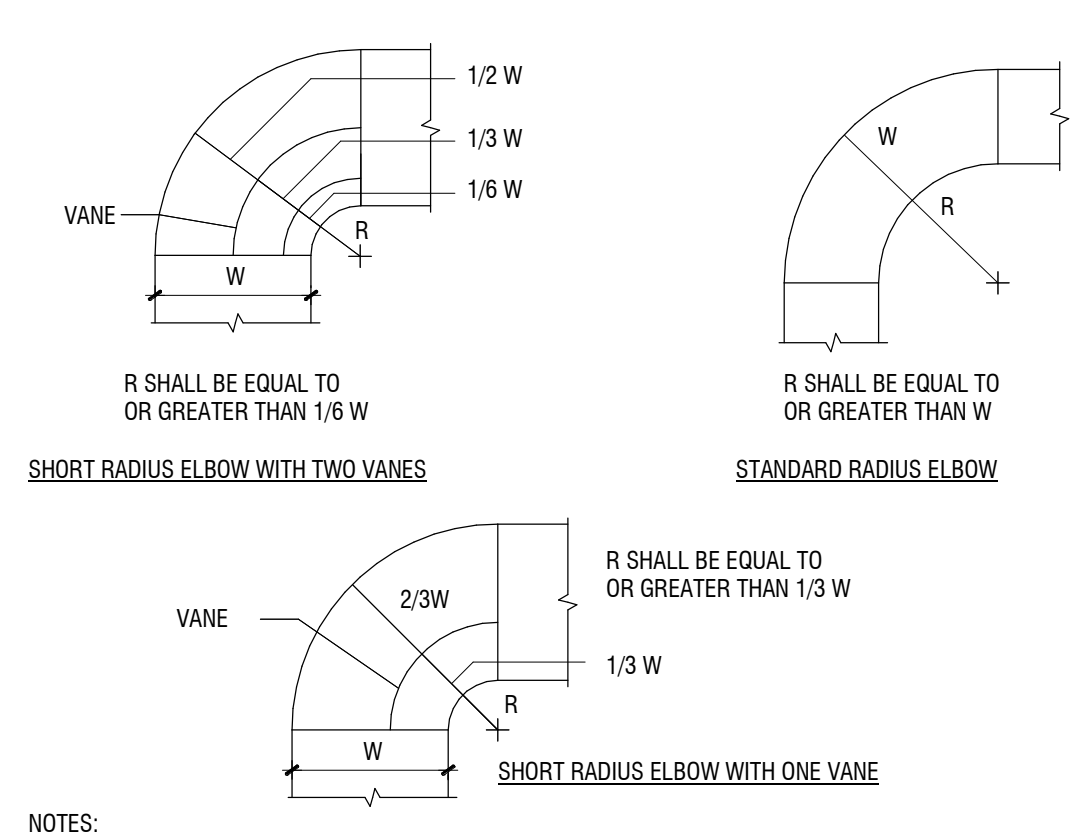


14 PIPE - PIPE ROOF PENETRATION DETAIL
 M501 NOT TO SCALE



- NOTES:**
1. MAXIMUM LOAD PER HANGER ASSEMBLY = 750 POUNDS.
 2. LOCATE HANGERS AS REQUIRED FOR PROPER SUPPORT OF EQUIPMENT.
 3. PROVIDE EXTERNAL VIBRATION ISOLATORS ONLY IF FAN EQUIPMENT HAS NOT BEEN PROVIDED WITH INTERNAL VIBRATION ISOLATION.

13 S - TYPICAL MECHANICAL EQUIPMENT HANGER DETAIL
 M501 NOT TO SCALE



- NOTES:**
1. MAKE THE INTERIOR SURFACE OF ALL RADIUS ELBOWS ROUND.
 2. MAKE ALL STANDARD RADIUS ELBOWS SHOWN ON PLANS SHORT RADIUS ELBOWS. ALL SHORT RADIUS ELBOWS HAVE VANES, AND VANES ARE CONSTRUCTED, SUPPORTED AND FASTENED IN ACCORDANCE WITH SMACNA.

12 DUCT - TYPICAL RADIUS ELBOWS
 M501 NOT TO SCALE

1 S - EQUIPMENT RAIL DETAIL - ROOF MOUNTED
 M501 NOT TO SCALE

