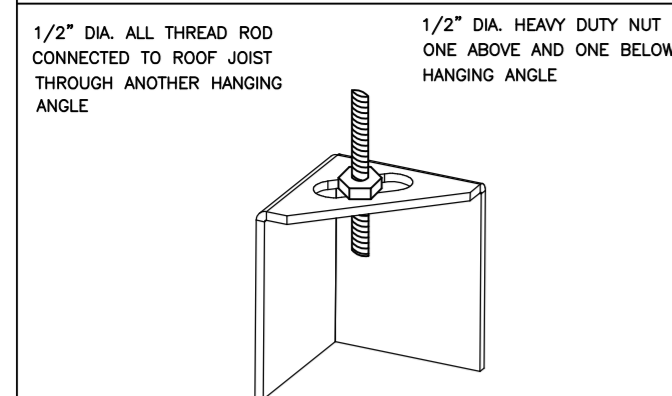


**ND-2 HANGING ANGLE DETAIL**



\*ROD AND NUTS TO BE SUPPLIED BY INSTALLING CONTRACTOR HANGING ANGLE IS PRE-FINISHED AT FACTORY.

**HANGING ANGLE LOCATIONS**

HOOD STYLE	DIM FROM REAR	DIM FROM (24\"/>	
CANOPY ND2	4.166"	2.246"	2.246"
ND2-PSP-F	4.166"	2.246"	2.246"
BACKSHELF BD-2	4.166"	2.246"	-
VHB/VHB-G	36"X36"	42"X42"	48"X48"
FRONT/BACK DIMS BY SIZE	2.246"	2.246"	2.246"

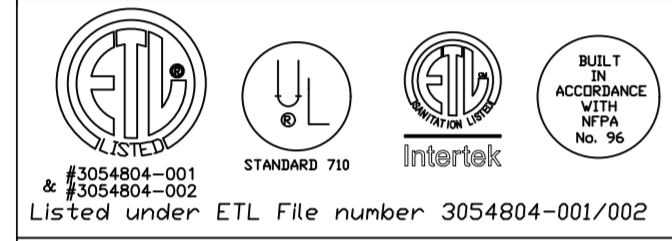
**CALCULATIONS UTILIZED**

EXHAUST CFM=LENGTH OF HOOD X CFM/IN.FT. (LOAD)  
 SUPPLY CFM=EXHAUST CFM X PERCENTAGE REQUIRED  
 TOTAL DUCT AREA=144 X  $\frac{CFM}{FPM}$   
 DUCT LENGTH=  $\frac{TOTAL DUCT AREA}{DUCT DEPTH}$

\*CAPTIVE-AIRE DUCT CONNECTION SIZES ARE CALCULATED USING AN EXHAUST VELOCITY OF 1500-1800 FPM AND A SUPPLY VELOCITY OF 300-400 FPM

**BUILDING CODES**

CAPTIVE-AIRE HOODS ARE BUILT IN COMPLIANCE WITH:



**CLEARANCE TO COMBUSTIBLES**

CAPTIVE-AIRE HOODS HAVE OPTIONAL CLEARANCE REDUCTION SYSTEMS AVAILABLE AS FOLLOWS:

MATERIAL	CLEARANCE REDUCTION SYSTEM
NON-COMBUSTIBLE	NONE REQUIRED
LIMITED-COMBUSTIBLE	3" UNINSULATED STANDOFF
COMBUSTIBLE	1" INSULATED STANDOFF

**GENERAL NOTES**

**INSTALLATION**

- ALL ELECTRICAL "FIELD" CONNECTIONS AND RELATED INTERCONNECTIONS BY ELECTRICAL CONTRACTORS.
- ALL PLUMBING "FIELD" CONNECTIONS AND RELATED INTERCONNECTIONS BY PLUMBING CONTRACTORS.
- HANGING BRACKETS LOCATED AND WELDED AS SHOWN ON PLANS. ALL OTHER HANGER MATERIALS PROVIDED BY INSTALLING CONTRACTOR.
- ALL CONNECTIONS FROM CAPTIVE-AIRE DUCT PER MECHANICAL CONTRACTOR'S PLANS.
- COOKING EQUIPMENT TO SHUTOFF IN EVENT OF FIRE.
- EXHAUST FANS TO TURN ON IN EVENT OF FIRE.
- ALL LIGHTS FIXTURE SHOWN INSTALLED BY CAPTIVE-AIRE ARE FACTORY PREWIRED. INTERCONNECTIONS BETWEEN HOODS AND TO SWITCHES BY ELECTRICAL CONTRACTORS.
- LAMPS FOR LIGHT FIXTURES BY INSTALLING CONTRACTORS.
- SEISMIC RESTRAINTS ARE RESPONSIBILITY OF INSTALLING CONTRACTOR.
- INSTALLING CONTRACTORS ASSUME ALL RELATED RESPONSIBILITY FOR VERIFICATION OF DIMENSIONAL DATA CONTAINED ON THESE DOCUMENTS FOR ACCURACY, INTEGRATION, AND ADMINISTRATION OF CODE REQUIREMENTS IN EFFECT PRIOR TO ANY RELEASE FOR PRODUCTION OF EQUIPMENT SHOWN.

**BALANCE**

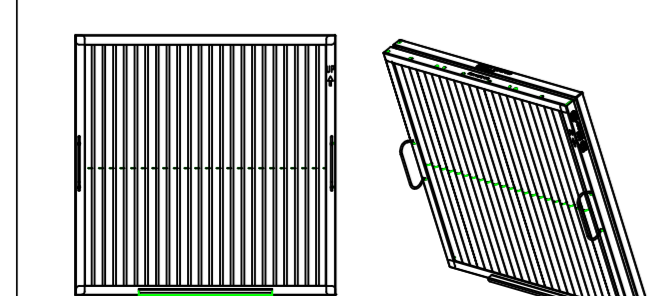
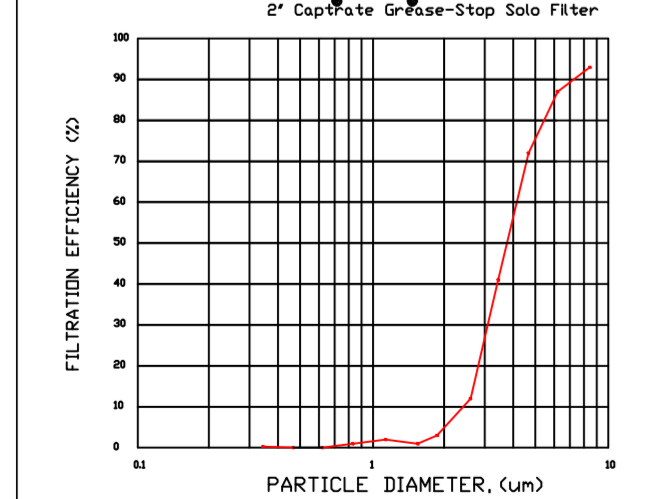
- KITCHEN HOODS MUST BE BALANCED WITH KITCHEN.
- KITCHEN SHALL BE NEGATIVE WITH RESPECT TO DINING AREA.
- RESTAURANT SHALL BE POSITIVE WITH RESPECT TO AMBIENT PRESSURE.

**ADDITIONAL**

- WRITTEN HOOD DIMENSIONS HAVE PRECEDENCE OVER SCALE.
- SIGNED AND "APPROVED" COPIES OF THIS DOCUMENT MUST BE RECEIVED BY THE FACTORY PRIOR TO COMMENCEMENT OF FABRICATION.

**FILTER DETAIL**

2" Captrate Grease-Stop Solo Filter



CaptiveAire Captrate Solo Filter  
 ETL Listed Grease Extracting Filter  
 Made From 430 Stainless Steel

**HOOD INFORMATION - JOB#5215759**

HOOD NO	TAG	MODEL	MANUFACTURER	LENGTH	MAX COOKING TEMP	TYPE	APPLIANCE DUTY	DESIGN CFM/FT	TOTAL EXH CFM	EXHAUST FLENUM RISER(S)	HOOD CONSTRUCTION	HOOD CONFIG END TO END	ROW
1	ITEM 33A	5424 ND-2	CAPTIVEAIRE	8' 6"	450 DEG	I	MEDIUM	200	1700	4" 14" 1700 1590 -0.828"	430 SS WHERE EXPOSED	ALDNE	FRONT
2	ITEM 33B	5424 ND-2	CAPTIVEAIRE	5' 0"	450 DEG	I	MEDIUM	155	775	4" 10" 775 1421 -0.436"	430 SS WHERE EXPOSED	ALDNE	ALDNE
3	ITEM 75	4224 VHB-G	CAPTIVEAIRE	3' 6"	700 DEG	II	N/A	150	525	4" 10" 525 963 -0.069"	304 SS 100%	ALDNE	ALDNE

**HOOD INFORMATION**

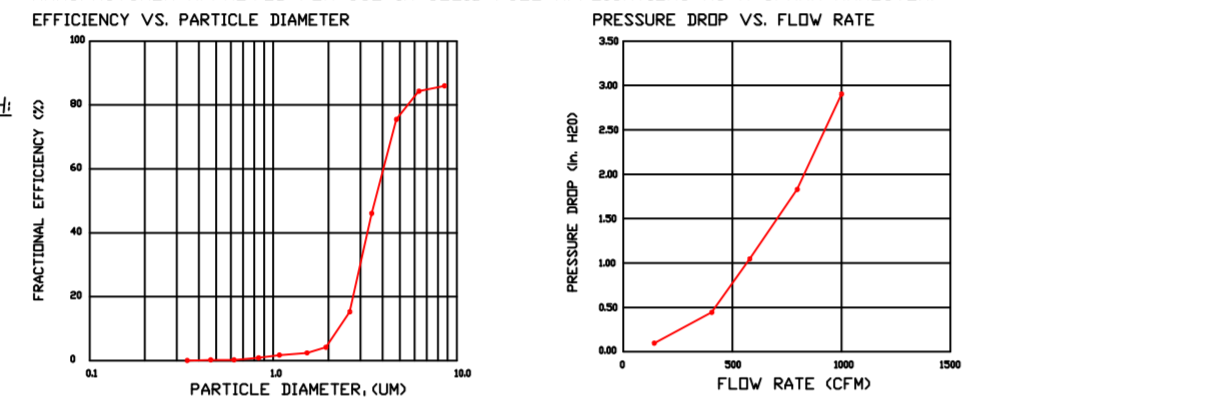
HOOD NO	TAG	TYPE	FILTER(S)		LIGHT(S)		UTILITY CABINET(S)			FIRE SYSTEM	HOOD SYSTEM	HOOD WEIGHT	
			QTY	HEIGHT	EFFICIENCY @ 7 MICRONS	QTY	TYPE	LOCATION	SIZE				TYPE
1	ITEM 33A	CAPTRATE SOLID FILTER	6	16"	16"	85% SEE FILTER SPEC	3	RECESSED ROUND	NO	LEFT	12"x54"x24"	NO	541 LBS
2	ITEM 33B	CAPTRATE SOLID FILTER	3	16"	16"	85% SEE FILTER SPEC	2	RECESSED ROUND	NO			NO	310 LBS
3	ITEM 75						0					NO	161 LBS

**HOOD OPTIONS**

HOOD NO	TAG	OPTION
1	ITEM 33A	FIELD WRAPPER 18.00" HIGH FRONT, LEFT, RIGHT. LEFT QUARTER END PANEL 23" TOP WIDTH, 0" BOTTOM WIDTH, 23" HIGH 430 SS. RIGHT QUARTER END PANEL 23" TOP WIDTH, 0" BOTTOM WIDTH, 23" HIGH 430 SS. RISER SENSOR INSTALL 3IN DBL.
2	ITEM 33B	FIELD WRAPPER 18.00" HIGH FRONT, LEFT, RIGHT. LEFT QUARTER END PANEL 27" TOP WIDTH, 24" BOTTOM WIDTH, 39.5" HIGH 430 SS. RIGHT QUARTER END PANEL 23" TOP WIDTH, 0" BOTTOM WIDTH, 23" HIGH 430 SS. RISER SENSOR INSTALL 3IN DBL.
3	ITEM 75	FIELD WRAPPER 18.00" HIGH FRONT, LEFT, RIGHT.

**SPECIFICATION: CAPTRATE® GREASE-STOP® SOLID FILTER**

THE CAPTRATE GREASE-STOP SOLID FILTER IS A SINGLE-STAGE FILTER FEATURING A UNIQUE S-Baffle DESIGN IN CONJUNCTION WITH A FITTED REAR Baffle DESIGN TO DELIVER EXCEPTIONAL FILTRATION EFFICIENCY. FILTER IS STAINLESS STEEL CONSTRUCTION, AND SIZED TO FIT INTO STANDARD 2-INCH DEEP HOOD CHANNELS. UNITS SHALL INCLUDE STAINLESS STEEL HANDLES AND A FASTENING DEVICE TO SECURE THE TWO COMPONENTS WHEN ASSEMBLED. GREASE EXTRACTION EFFICIENCY PERFORMANCE SHALL REMOVE AT LEAST 75% OF GREASE PARTICLES FIVE MICRONS IN SIZE, AND 85% GREASE PARTICLES SEVEN MICRONS IN SIZE AND LARGER, WITH A CORRESPONDING PRESSURE DROP NOT TO EXCEED 1.0 INCHES" OF WATER GAUGE. THE CAPTRATE GREASE-STOP SOLID WAS TESTED TO ASTM STANDARD ASTM F2519-05. MANUFACTURER APPROVED FOR USE IN SOLID FUEL APPLICATIONS AS A SPARK ARRESTER. EFFICIENCY VS. PARTICLE DIAMETER

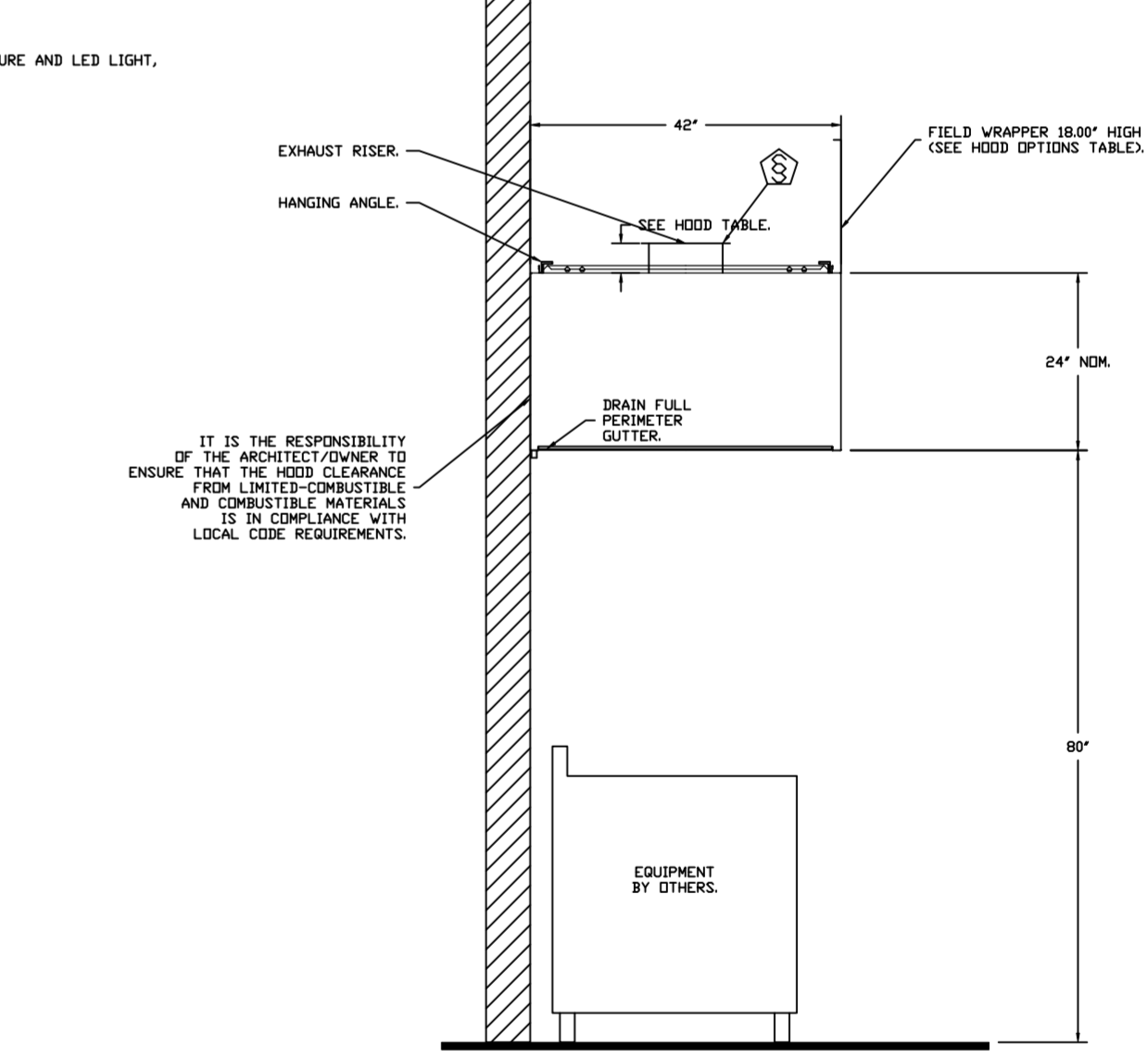
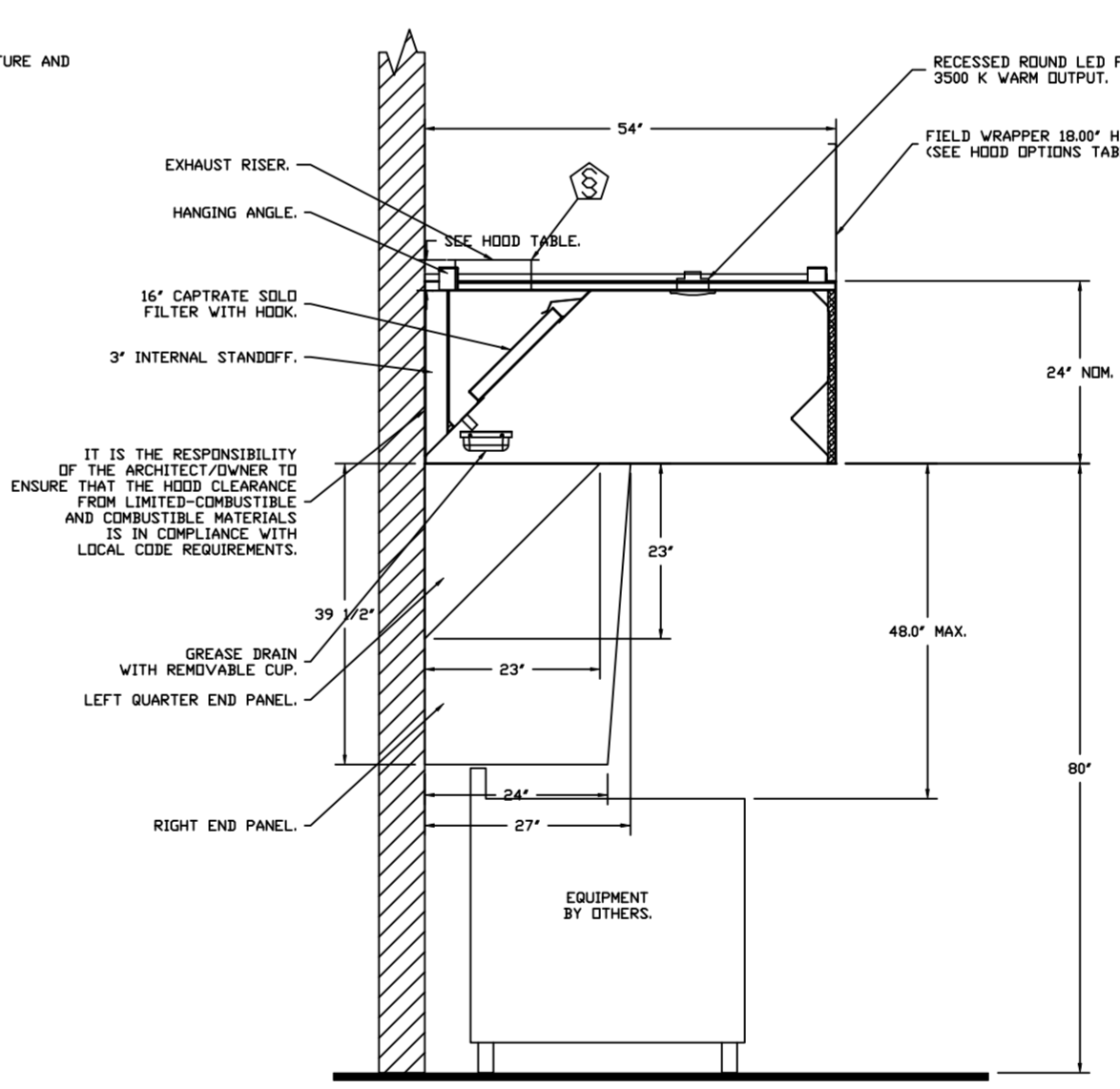
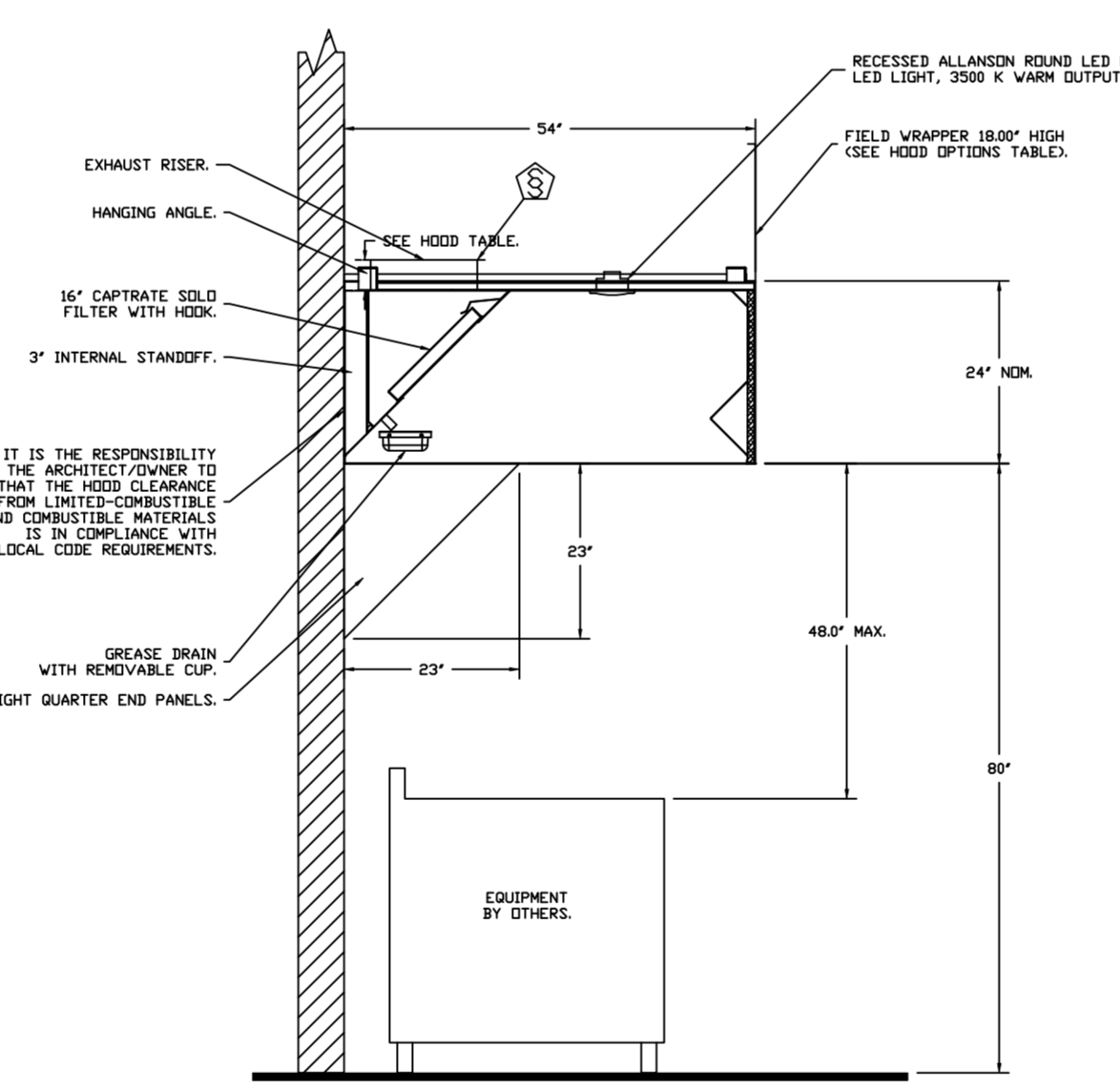
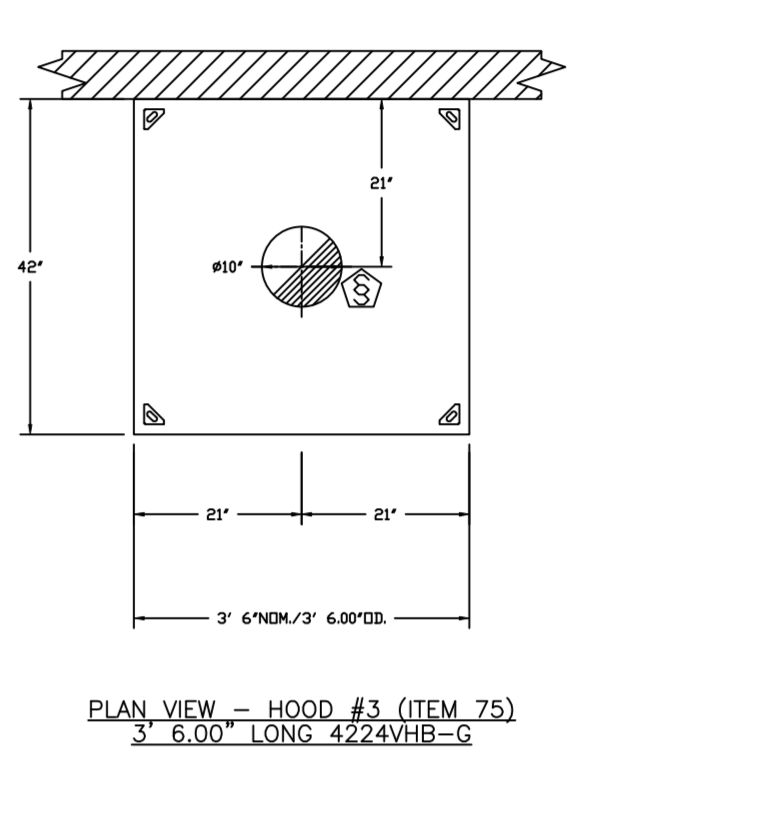
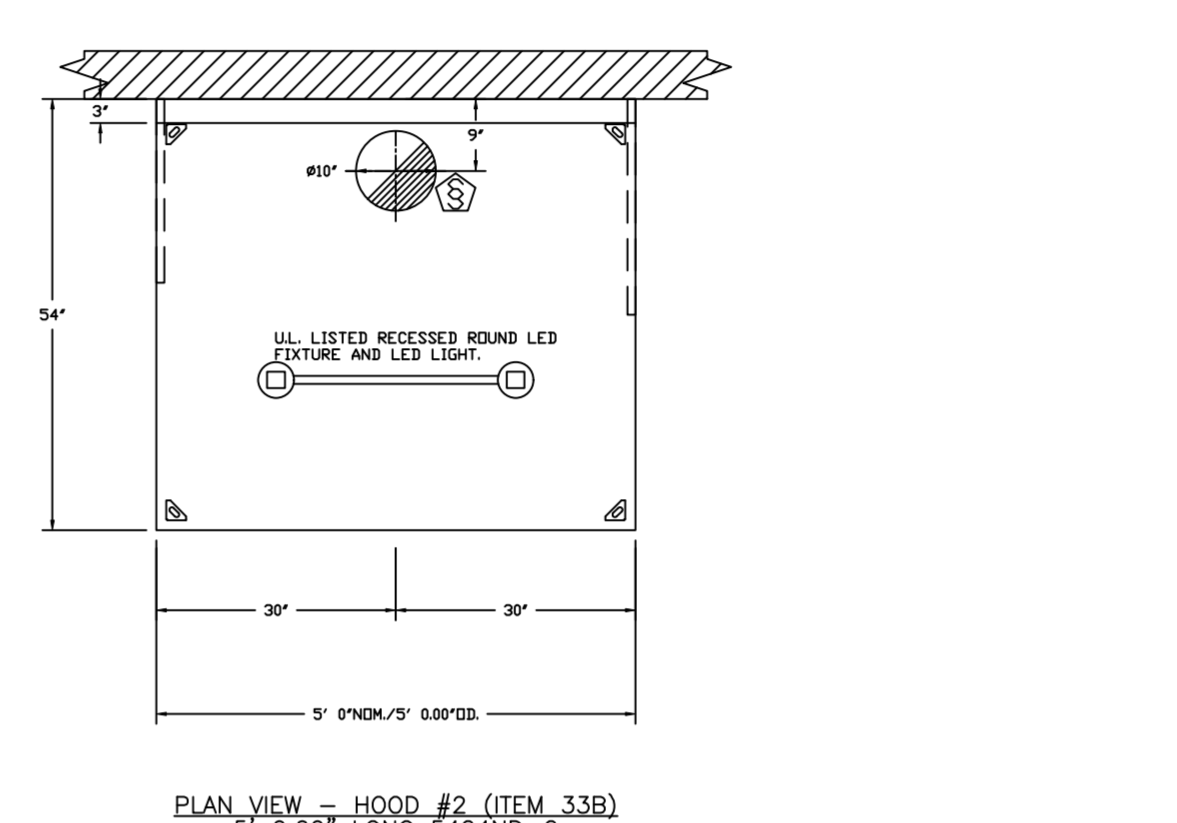
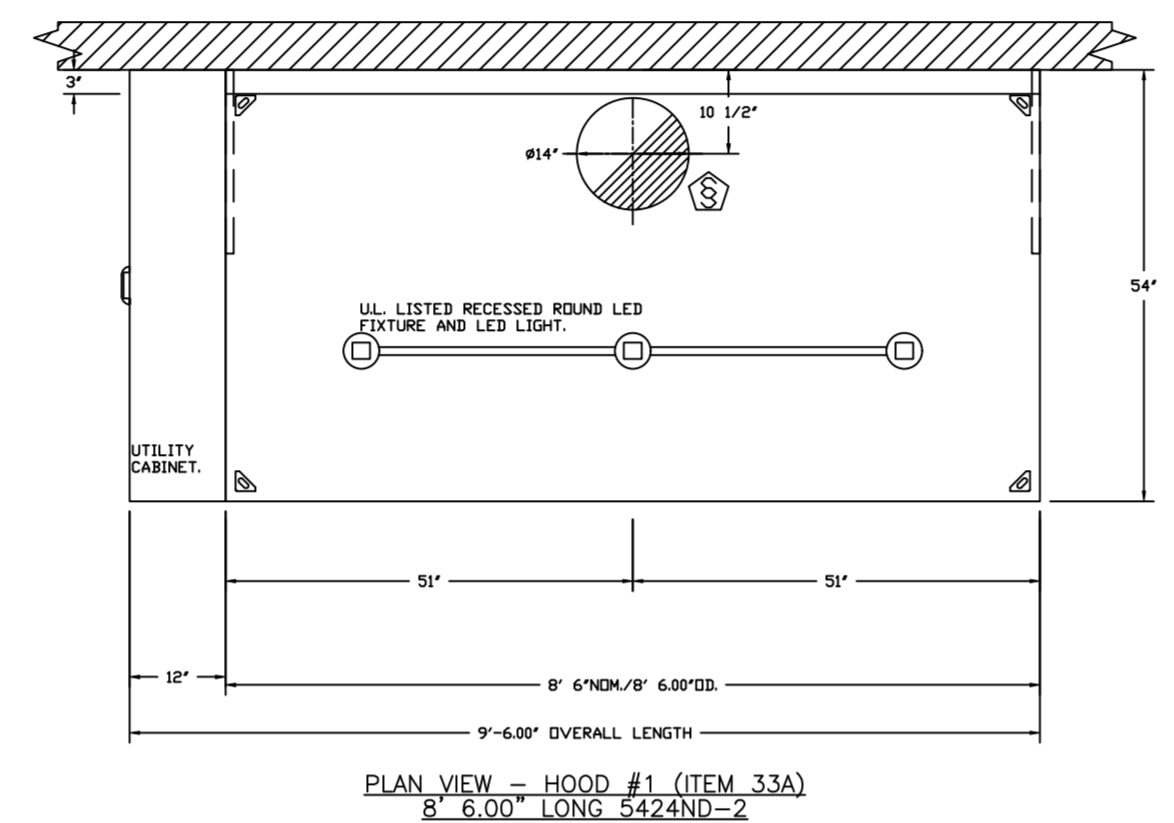


CAPTIVE FILTERS ARE BUILT IN COMPLIANCE WITH: NFPA #96, NSF STANDARD #2, UL STANDARD #1046, INT. MECH. CODE (IMC), ULC-S649.



**PATENT NUMBERS**

EXHAUST HOODS ND-2/BD-2/SND-2 (CANADA) - CA PATENT 2520435 C.



FOR QUESTIONS, CALL THE: KANSAS CITY REGIONAL OFFICE  
 1126 SWIFT STREET, KANSAS CITY, MO 64116  
 PHONE: (816) 221-8575  
 FAX: (816) 221-8311

CUSTOMER APPROVAL TO MANUFACTURE:

Approved as Noted   
 Approved with NO Exception Taken   
 Revise and Resubmit   
 SIGNATURE \_\_\_\_\_ Date \_\_\_\_\_  
 Your Title \_\_\_\_\_

**\*\*\* NOTE \*\*\***  
 ALL WALLS AND STRUCTURES THAT COME WITHIN 18" OF HOOD MUST BE METAL STUDS AND SHEETROCK. WOOD STUDS OR ANY OTHER COMBUSTIBLE MATERIAL WITHIN 18" OF HOOD NO ALLOWED.

**\*\*\* NOTE \*\*\***  
 HOOD MANUFACTURER RECOMMENDS NO RETURNS OR 4-WAY DIFFUSERS WITHIN 10 FEET OF HOOD IN ALL DIRECTION.

**\*\*\* NOTE \*\*\***  
 MAKEUP AIR SHALL BE DELIVERED INTO SPACE IN MANNER THAT WILL NOT DISRUPT HOODS ABILITY TO CAPTURE AND CONTAIN.

**SYSTEM DESIGN VERIFICATION (SDV)**

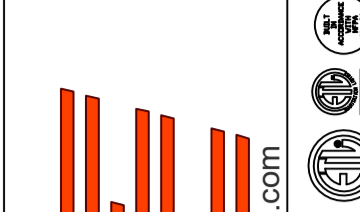
IF ORDERED, CAS SERVICE WILL PERFORM A SYSTEM DESIGN VERIFICATION (SDV) ONCE ALL EQUIPMENT HAS HAD A COMPLETE START UP PER THE OPERATION AND INSTALLATION MANUAL. TYPICALLY, THE SDV WILL BE PERFORMED AFTER ALL INSPECTIONS ARE COMPLETE.

ANY FIELD RELATED DISCREPANCIES THAT ARE DISCOVERED DURING THE SDV WILL BE BROUGHT TO THE ATTENTION OF THE GENERAL CONTRACTOR AND CORRESPONDING TRADES ON SITE. THESE ISSUES WILL BE DOCUMENTED AND FORWARDED TO THE APPROPRIATE SALES OFFICE. IF CAS SERVICE HAS TO RESOLVE A DISCREPANCY THAT IS A FIELD ISSUE, THE GENERAL CONTRACTOR WILL BE NOTIFIED AND BILLED FOR THE WORK. SHOULD A RETURN TRIP BE REQUIRED DUE TO ANY FIELD RELATED DISCREPANCY THAT CANNOT BE RESOLVED DURING THE SDV, THERE WILL BE ADDITIONAL TRIP CHARGES.

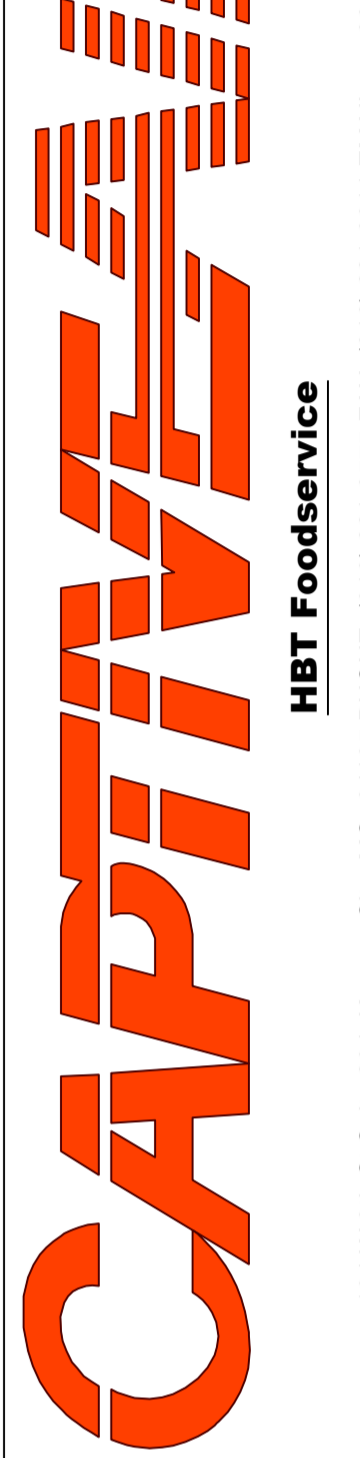
DURING THE SDV, CAS SERVICE WILL ADDRESS ANY DISCREPANCY THAT IS THE FAULT OF THE MANUFACTURER. SHOULD A RETURN TRIP BE REQUIRED, THE GENERAL CONTRACTOR AND APPROPRIATE SALES OFFICE WILL BE NOTIFIED. THERE WILL BE NO ADDITIONAL CHARGES FOR MANUFACTURER DISCREPANCIES.

**REVISIONS**

DESCRIPTION	DATE:



www.captiveaire.com  
 HBT Foodservice



Freddy's - Tolleson, AZ  
 TOLLESON, AZ, 85353

DATE: 12/3/2021

DWG.#: 5215759

DRAWN BY: michael.co

SCALE: 1/2" = 1'-0"

MASTER DRAWING

SHEET NO. 1

**EXHAUST FAN INFORMATION - JOB#5215759**

FAN UNIT NO	TAG	QTY	FAN UNIT MODEL #	MANUFACTURER	CFM	ESP	RPM	MOTOR ENCL	HP	BHP	PHASE	VOLT	FLA	DISCHARGE VELOCITY	WEIGHT (LBS)	SDNES
1	ITEM 74.1	1	CASRE18DD	CAPTIVEAIRE	1700	1.400	1118	DDP-PREMIUM	1.000	0.6590	3	208	3.8	986 FPM	282	13.9
2	ITEM 74.2	1	DU50HFA	CAPTIVEAIRE	775	1.250	1532	TEAD-ECM	0.500	0.3950	1	115	6.3	295 FPM	101	16.6
3	ITEM 75.1	1	DU33HFA	CAPTIVEAIRE	585	0.800	1500	TEAD-ECM	0.333	0.2000	1	115	4.3	260 FPM	67	14.7

**DDAS/RTU FAN SCHEDULE - JOB#5215759**

FAN UNIT NO	TAG	QTY	DDAS/RTU MODEL #	MANUFACTURER	BLDWR	RETURN AIR CFM	MAX OUTSIDE AIR CFM	TOTAL CFM	ESP	HP	BHP	PHASE	VOLT	MCA	MDCP	WEIGHT (LBS)
4	DDAS-1	1	CASRTU3-1150-18-20T-DDAS	CAPTIVEAIRE	18P-3	0	2900	2900	0.500	3.000	1.8710	3	208	102.8A	110A	2605

**DDAS/RTU COOLING SCHEDULE**

FAN UNIT NO	TAG	COMPRESSOR	OUTDOOR FAN	INDOOR COIL	OUTSIDE AIR DB TEMP	OUTSIDE AIR WB TEMP	MIXED AIR DB TEMP	MIXED AIR WB TEMP	LEAVING DB TEMP	LEAVING WB TEMP	LEAVING DP TEMP	TOTAL CAPACITY	SENSIBLE CAPACITY	LATENT CAPACITY	REHEAT LEAVING DB TEMP	REHEAT LEAVING WB TEMP	DESIGNED REHEAT CAPACITY	MAX REHEAT CAPACITY	REHEAT LEAVING RELATIVE HUMIDITY	MOISTURE REMOVAL RATE	IEER							
4	DDAS-1	20	190-240	3	200-240	3	60	3	7	11.9	SDFT	83.8°F	75.8°F	83.8°F	75.8°F	48.1°F	45.8°F	43.8°F	264.0 MBH	107.3 MBH	156.7 MBH	70.0°F	55.3°F	69.5 MBH	129.6 MBH	39	141.5 LBS/HR	18.2

**DDAS/RTU HEATING SCHEDULE**

FAN UNIT NO	TAG	INPUT BTUs	OUTPUT BTUs	TEMP RISE	REQUIRED INPUT GAS PRESSURE	GAS TYPE	BURNER EFFICIENCY(%)
4	DDAS-1	148565	118852	37°F	7 IN. W.C. - 14 IN. W.C.	NATURAL	80

**FAN OPTIONS**

FAN UNIT NO	TAG	QTY	DESCRIPTION
1	ITEM 74.1	1	UTILITY SET GREASE CUP.
		1	REIB - DISCHARGE EXTENSION ASSEMBLY WITH HARDWARE.
		1	2 YEAR PARTS WARRANTY.
2	ITEM 74.2	1	GREASE BOX.
		1	UPBLAST FAN WHEEL ACCESS PORT.
		1	36" TALL STRAIGHT WIND BAND EXTENSION 13 (SHIPS LOOSE).
3	ITEM 75.1	1	GUY LINE EYE BOLTS - USED FOR 3 GUY LINE TIE OFF POINTS.
		1	ECM WIRING PACKAGE - PWM SIGNAL FROM ECM/D3 PREWIRE (TELCD MOTOR), CCW ROTATION.
		1	2 YEAR PARTS WARRANTY.
4	DDAS-1	1	ECM WIRING PACKAGE - EXHAUST - MANUAL OR 0-10VDC REFERENCE SPEED CONTROL -MSC-(TELCD), CCW ROTATION.
		1	SCR-11 BIRD SCREEN.
		1	1 15-BBD DAMPER.
		1	2 YEAR PARTS WARRANTY.
		1	INLET PRESSURE GAUGE, 0-35".
		1	MANIFOLD PRESSURE GAUGE, 0 TO 10" W.C., 1 FURNACE.
		1	RTU TOTAL CFM MONITORING.
		1	SINGLE POINT ELECTRICAL CONNECTION FOR RTU 750VA TRANSFORMER USED. IF A NON-DCV PREWIRE CIRCUIT THIS UNIT, THE REB, #47, MAX, OR #24 PREWIRE OPTION MUST BE SELECTED. DOES NOT PROVIDE SUPPLY STARTER IN PREWIRE.
		1	CASLINK BUILDING MONITORING SYSTEM - INTERNET OR CELLULAR CONNECTION REQUIRED.
		1	RTU3 DOWN DISCHARGE.
		1	2" MERV 13 FILTERS FOR RTU3 (QTY. 4).
		1	2" MERV 8 FILTERS FOR RTU3 (QTY. 4).
		1	OVERHEAT STAT.
		1	VFD FACTORY MOUNTED AND WIRED IN RTU COMMERCIAL CONTROL VESTIBULE.
		1	HIGH AMBIENT - 20 TON MODULATING COOLING OPTION, 208/230V, R410A REFRIGERANT, VARIABLE SPEED COMPRESSOR, ECM CONDENSING FANS. USED FOR SUMMER CONDITIONS ABOVE 110° DEGREES.
1	20 TON MODULATING REHEAT OPTION - SPACE BEVPOINT CONTROL.		
1	RTU3 CURB DUCT HANGER.		
1	OCCUPIED SCHEDULING.		
1	CLOGGED FILTER SWITCH - NOTIFICATION ON HMI.		
1	RTU INTAKE/RETURN DAMPER - SCHEDULED OA PERCENTAGE CONTROL.		
1	RTU3 DOWN RETURN.		
1	VAV PACKAGE W/ 0-10VDC INPUT CONTROL (571 VFD INCLUDED).		
1	RTU RETURN MOUNTED SMOKE DETECTOR AND SAMPLING TUBE - FACTORY INSTALLED.		
1	RTU3 HAIL GUARD.		
1	5 YEAR ENTIRE UNIT PARTS WARRANTY, 10 YEAR ENTIRE UNIT PARTS WARRANTY WITH REMOTE MONITORING AND CAPTIVEAIRE SERVICE CONTRACT, 25 YEAR STAINLESS STEEL FURNACE PARTS WARRANTY (SEE ADDITIONAL DETAILS).		

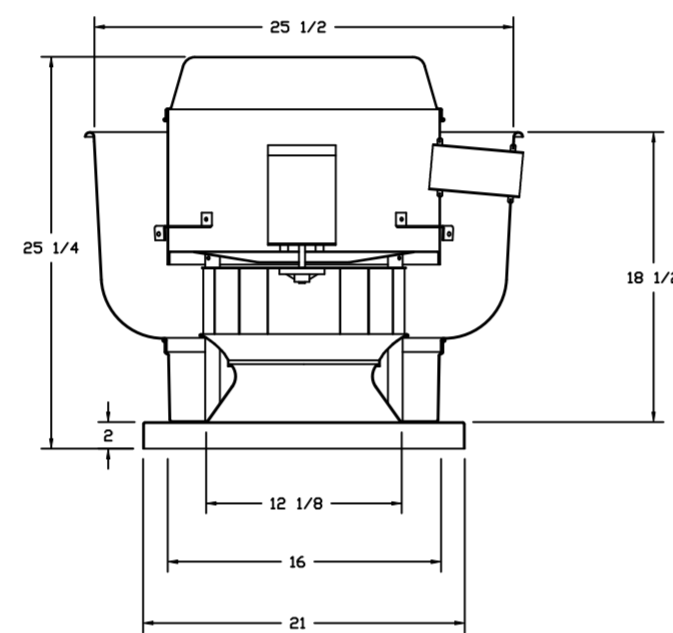
**FAN ACCESSORIES**

FAN UNIT NO	TAG	EXHAUST			SUPPLY			
		GREASE CUP	GRAVITY DAMPER	WALL MOUNT	SIDE DISCHARGE	GRAVITY DAMPER	MOTORIZED DAMPER	WALL MOUNT
1	ITEM 74.1	YES						
2	ITEM 74.2	YES						
3	ITEM 75.1	YES						

**CURB ASSEMBLIES**

NO	DN FAN	TAG	WEIGHT	ITEM	SIZE
1	# 1	ITEM 74.1	38 LBS	CURB	26.500"W X 26.500"L X 24.000"H ALONG LENGTH, RIGHT VENTED HINGED.
2	# 2	ITEM 74.2	31 LBS	CURB	19.500"W X 19.500"L X 20.000"H ALONG LENGTH, RIGHT VENTED HINGED.
3	# 3	ITEM 75.1	27 LBS	CURB	19.500"W X 19.500"L X 20.000"H ALONG LENGTH, RIGHT VENTED.
4	# 4	DDAS-1	78 LBS	CURB	59.500"W X 91.000"L X 14.000"H ALONG WIDTH, RIGHT INSULATED.

FAN #3 DU33HFA - EXHAUST FAN (ITEM 75.1)

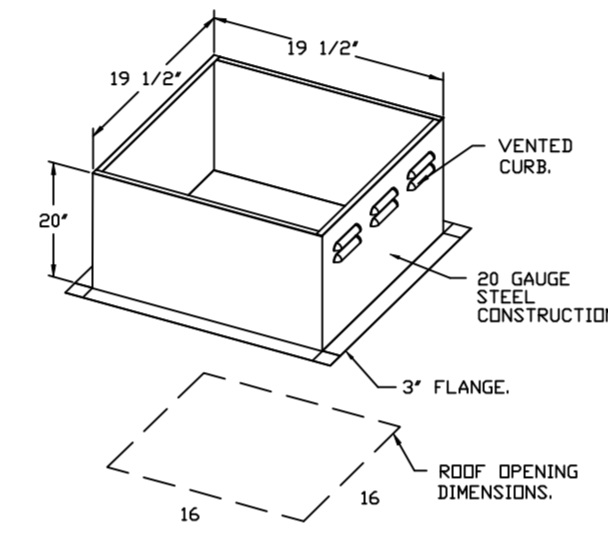


**FEATURES:**

- DIRECT DRIVE CONSTRUCTION (NO BELTS/PULLEYS).
- ROOF MOUNTED FANS.
- UL-705.
- VARIABLE SPEED CONTROL.
- INTERNAL WIRING.
- THERMAL OVERLOAD PROTECTION (SINGLE PHASE).
- NEMA 3R SAFETY DISCONNECT SWITCH.

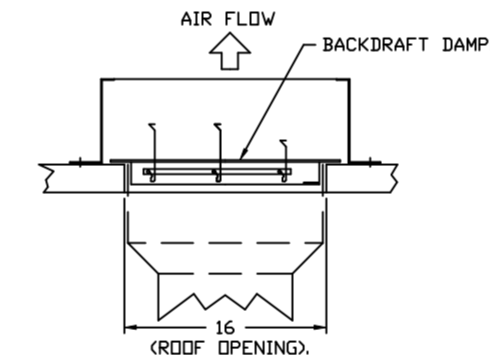
**OPTIONS**

- ECM WIRING PACKAGE - EXHAUST - MANUAL OR 0-10VDC REFERENCE SPEED CONTROL -MSC-(TELCD), CCW ROTATION.
- SCR-11 BIRD SCREEN.
- 1 15-BBD DAMPER.
- 2 YEAR PARTS WARRANTY.

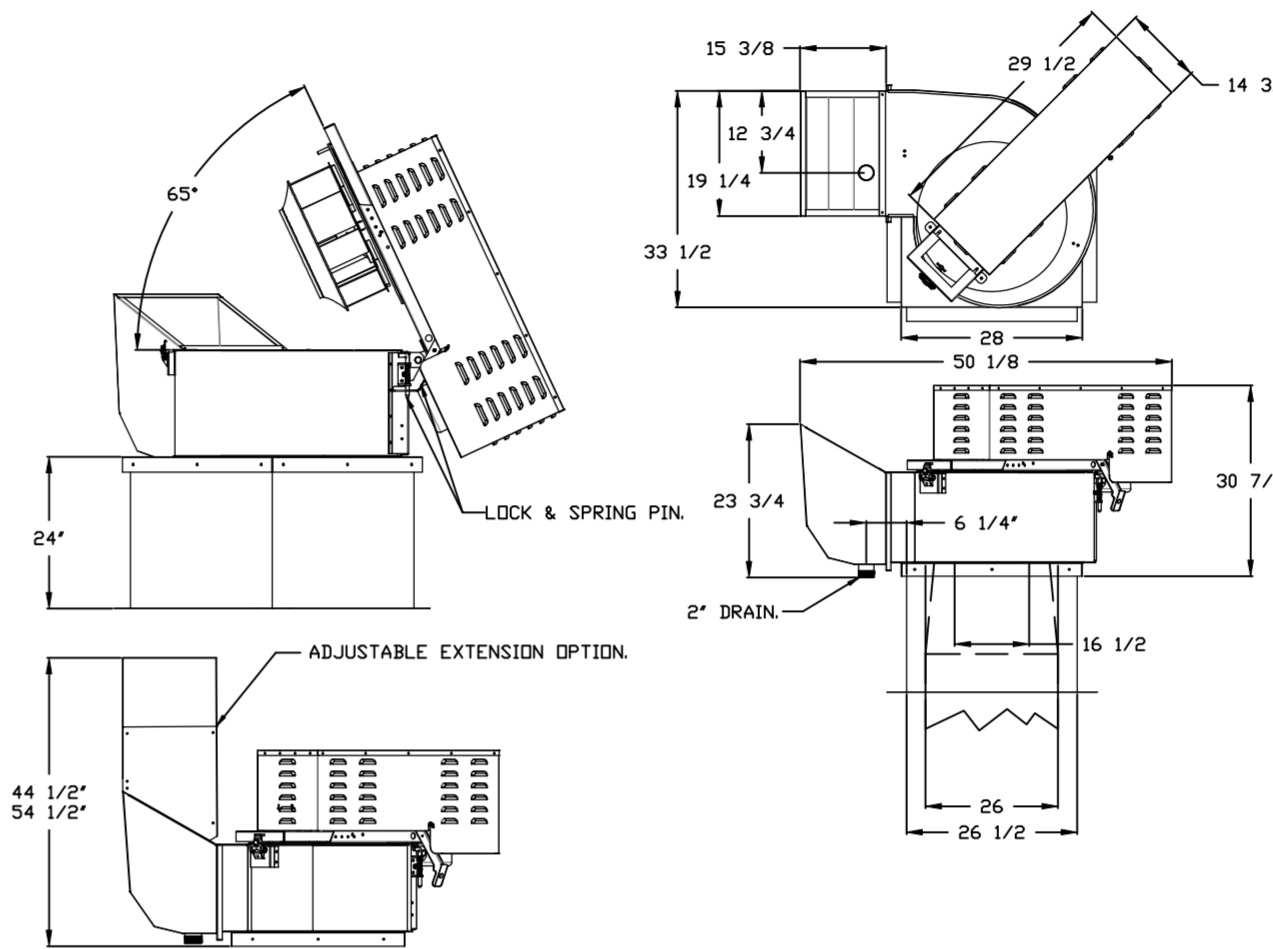


PITCHED CURBS ARE AVAILABLE FOR PITCHED ROOFS.  
SPECIFY PITCH: EXAMPLE: 7/12 PITCH = 30° SLOPE.

**BACKDRAFT DAMPER INSTALLATION**



FAN #1 CASRE18DD - EXHAUST FAN (ITEM 74.1)



**FEATURES:**

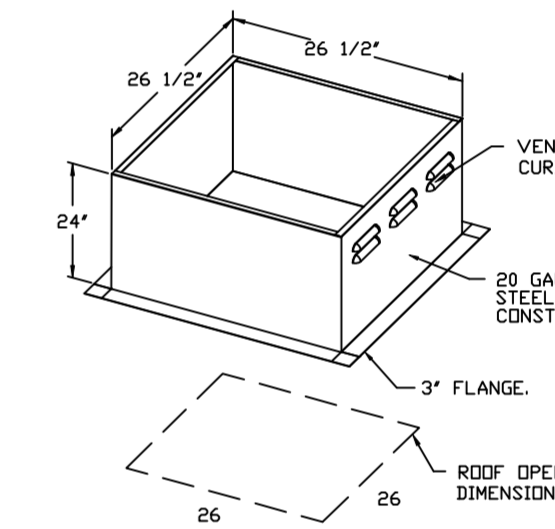
- ROOF MOUNTED FANS.
- RESTAURANT MODEL.
- UL-705 AND UL-C-5645.
- HIGH HEAT OPERATION DIRECT DRIVE 300°F (149°C).
- HEAT SLINGER.
- GREASE CLASSIFICATION TESTING.
- TILT OUT WHEEL.
- LOCKING PIN FOR POWER PACK.
- MOTOR WEATHER COVER.
- INTERLOCKED DISCONNECT SWITCH.
- NEMA 4X SAFETY DISCONNECT SWITCH.

**NORMAL TEMPERATURE TEST DIRECT DRIVE**  
EXHAUST FAN MUST OPERATE CONTINUOUSLY WHILE EXHAUSTING BURNING GREASE VAPORS AT 600°F (315°C) FOR A PERIOD OF 15 MINUTES WITHOUT THE FAN BECOMING DAMAGED TO ANY EXTENT THAT COULD CAUSE AN UNSAFE CONDITION.

**ABNORMAL FLARE-UP TEST DIRECT DRIVE**  
EXHAUST FAN MUST OPERATE CONTINUOUSLY WHILE EXHAUSTING BURNING GREASE VAPORS AT 600°F (315°C) FOR A PERIOD OF 15 MINUTES WITHOUT THE FAN BECOMING DAMAGED TO ANY EXTENT THAT COULD CAUSE AN UNSAFE CONDITION.

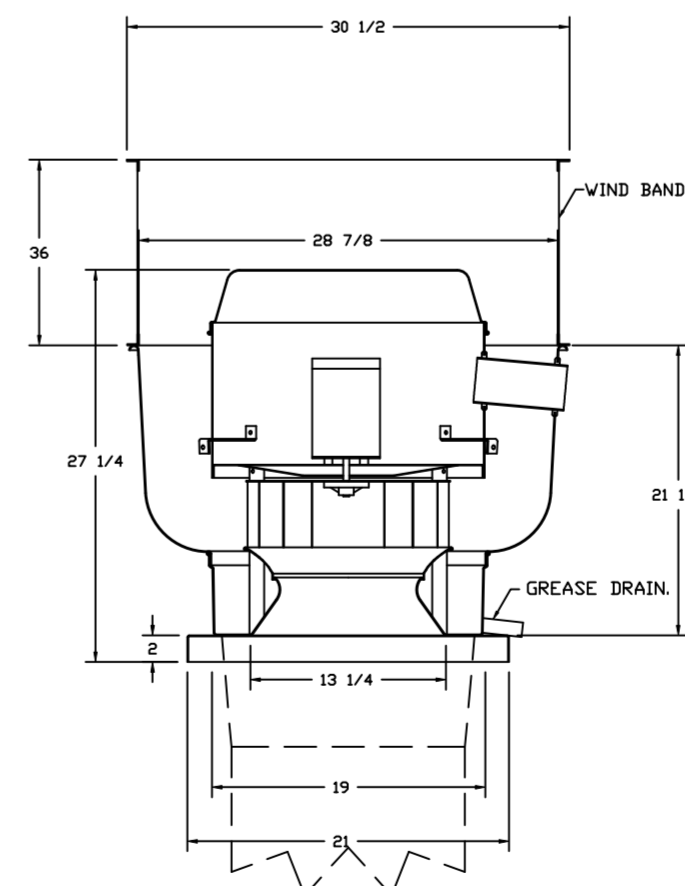
**DETAILS**

UTILITY SET GREASE CUP  
REIB - DISCHARGE EXTENSION ASSEMBLY WITH HARDWARE.



PITCHED CURBS ARE AVAILABLE FOR PITCHED ROOFS.  
SPECIFY PITCH: EXAMPLE: 7/12 PITCH = 30° SLOPE.

FAN #2 DU50HFA - EXHAUST FAN (ITEM 74.2)



**FEATURES:**

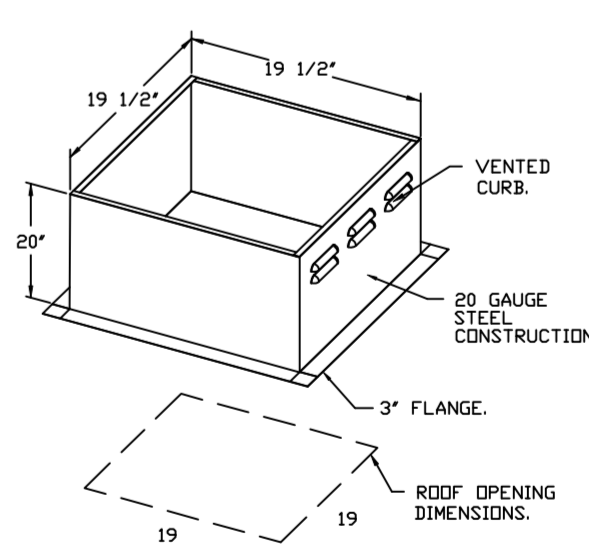
- DIRECT DRIVE CONSTRUCTION (NO BELTS/PULLEYS).
- ROOF MOUNTED FANS.
- RESTAURANT MODEL.
- UL-705 AND UL-C-5645 AND UL-C-5645.
- VARIABLE SPEED CONTROL.
- INTERNAL WIRING.
- THERMAL OVERLOAD PROTECTION (SINGLE PHASE).
- HIGH HEAT OPERATION 300°F (149°C).
- GREASE CLASSIFICATION TESTING.
- NEMA 3R SAFETY DISCONNECT SWITCH.

**NORMAL TEMPERATURE TEST DIRECT DRIVE**  
EXHAUST FAN MUST OPERATE CONTINUOUSLY WHILE EXHAUSTING BURNING GREASE VAPORS AT 600°F (315°C) FOR A PERIOD OF 15 MINUTES WITHOUT THE FAN BECOMING DAMAGED TO ANY EXTENT THAT COULD CAUSE AN UNSAFE CONDITION.

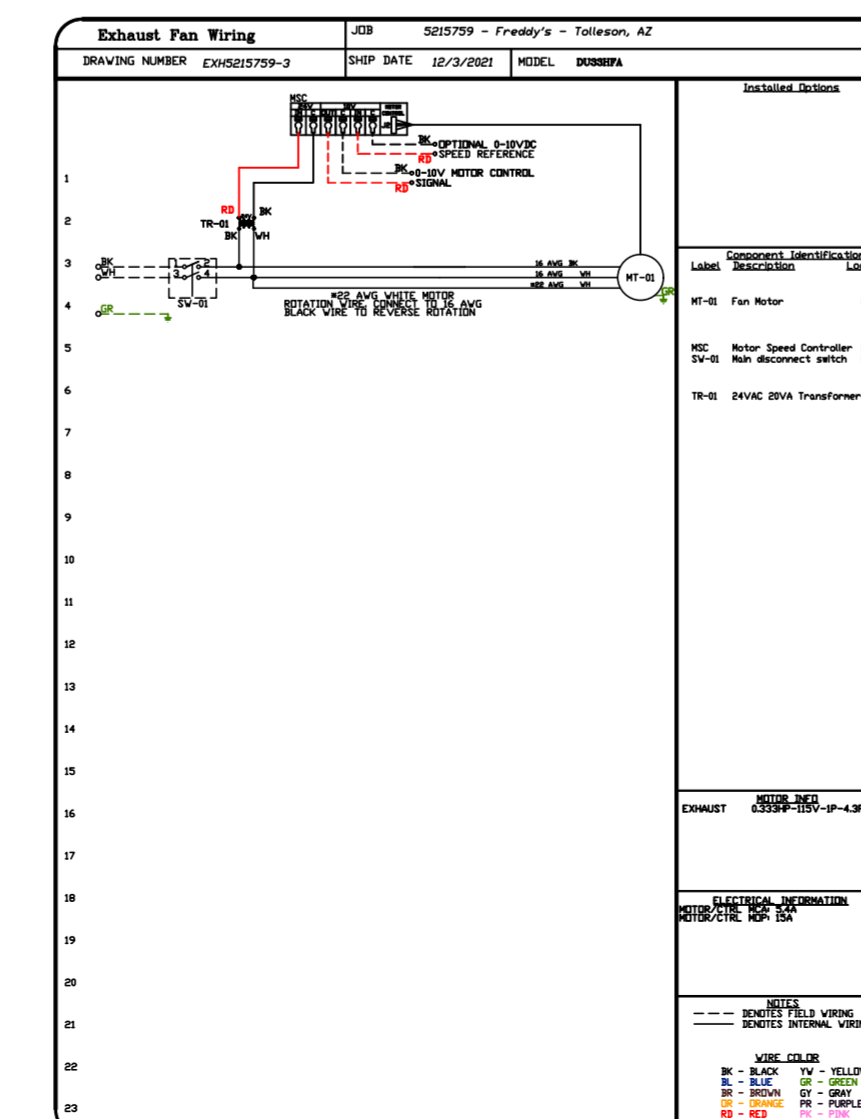
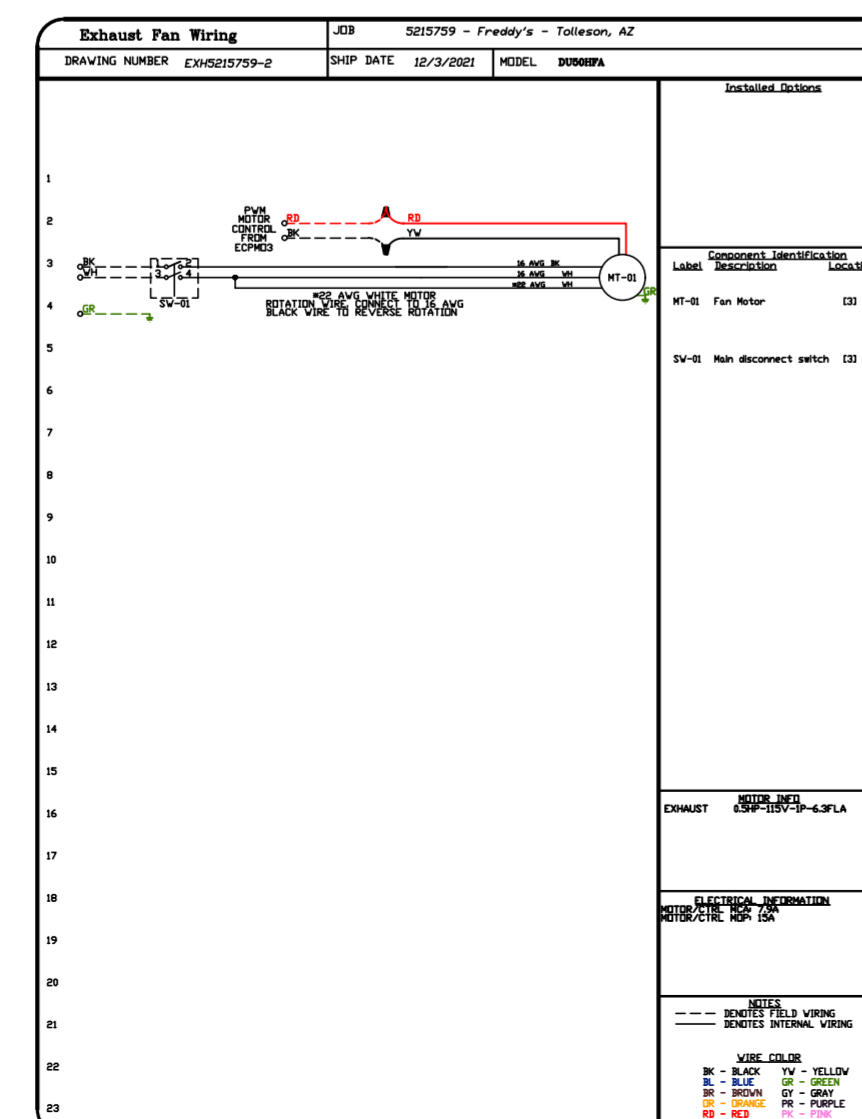
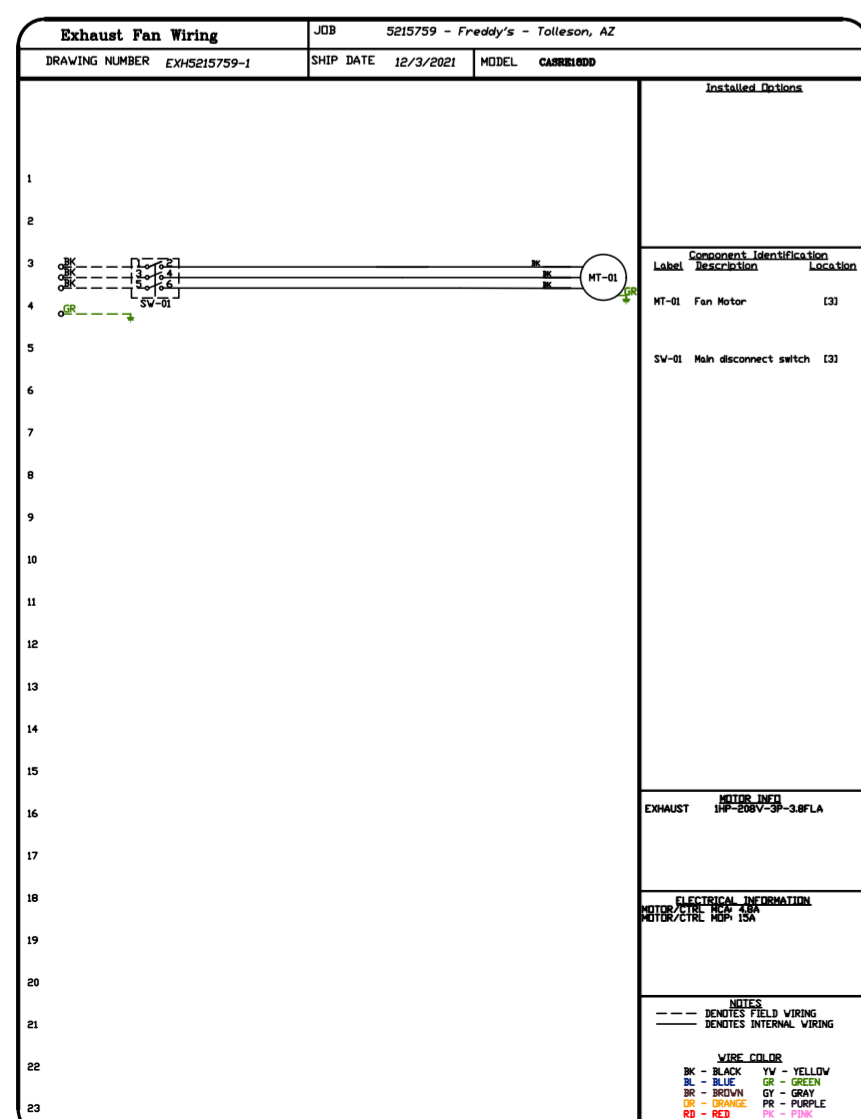
**ABNORMAL FLARE-UP TEST DIRECT DRIVE**  
EXHAUST FAN MUST OPERATE CONTINUOUSLY WHILE EXHAUSTING BURNING GREASE VAPORS AT 600°F (315°C) FOR A PERIOD OF 15 MINUTES WITHOUT THE FAN BECOMING DAMAGED TO ANY EXTENT THAT COULD CAUSE AN UNSAFE CONDITION.

**OPTIONS**

- GREASE BOX.
- UPBLAST FAN WHEEL ACCESS PORT.
- 36" TALL STRAIGHT WIND BAND EXTENSION 13 (SHIPS LOOSE).
- GUY LINE EYE BOLTS - USED FOR 3 GUY LINE TIE OFF POINTS.
- ECM WIRING PACKAGE - PWM SIGNAL FROM ECM/D3 PREWIRE (TELCD MOTOR), CCW ROTATION.

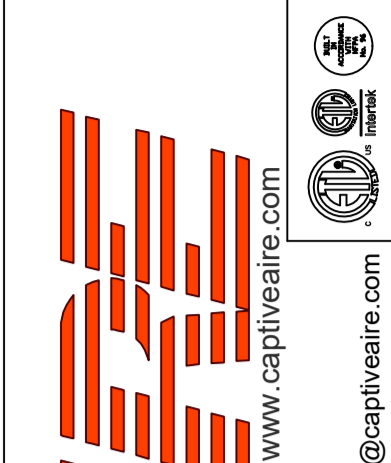


PITCHED CURBS ARE AVAILABLE FOR PITCHED ROOFS.  
SPECIFY PITCH: EXAMPLE: 7/12 PITCH = 30° SLOPE.



**REVISIONS**

DESCRIPTION	DATE



Freddy's - Tolleson, AZ  
TOLLESON, AZ, 85353

DATE: 12/3/2021

DWG.#:  
5215759

DRAWN BY:  
michael.co

SCALE:  
1/2" = 1'-0"

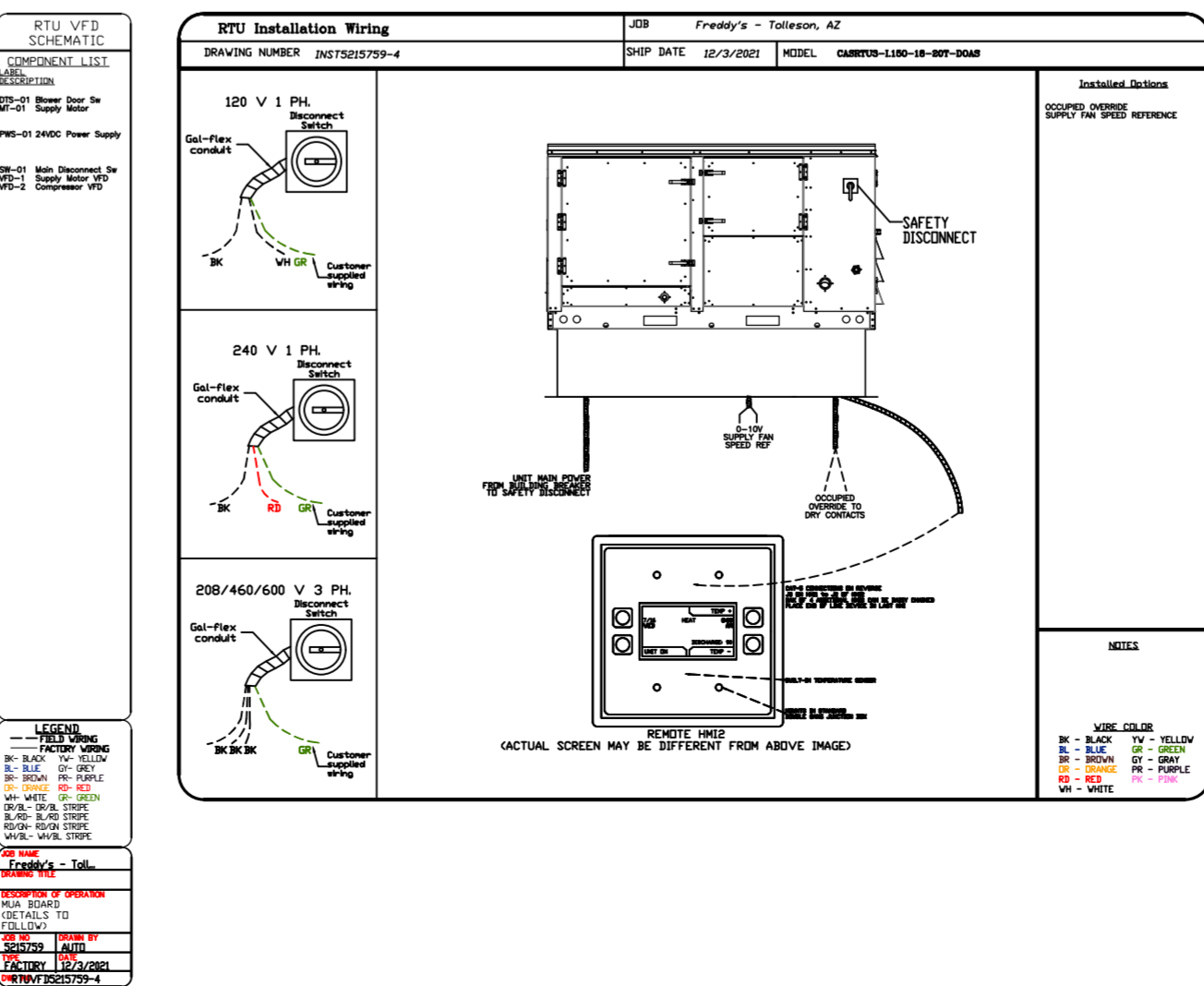
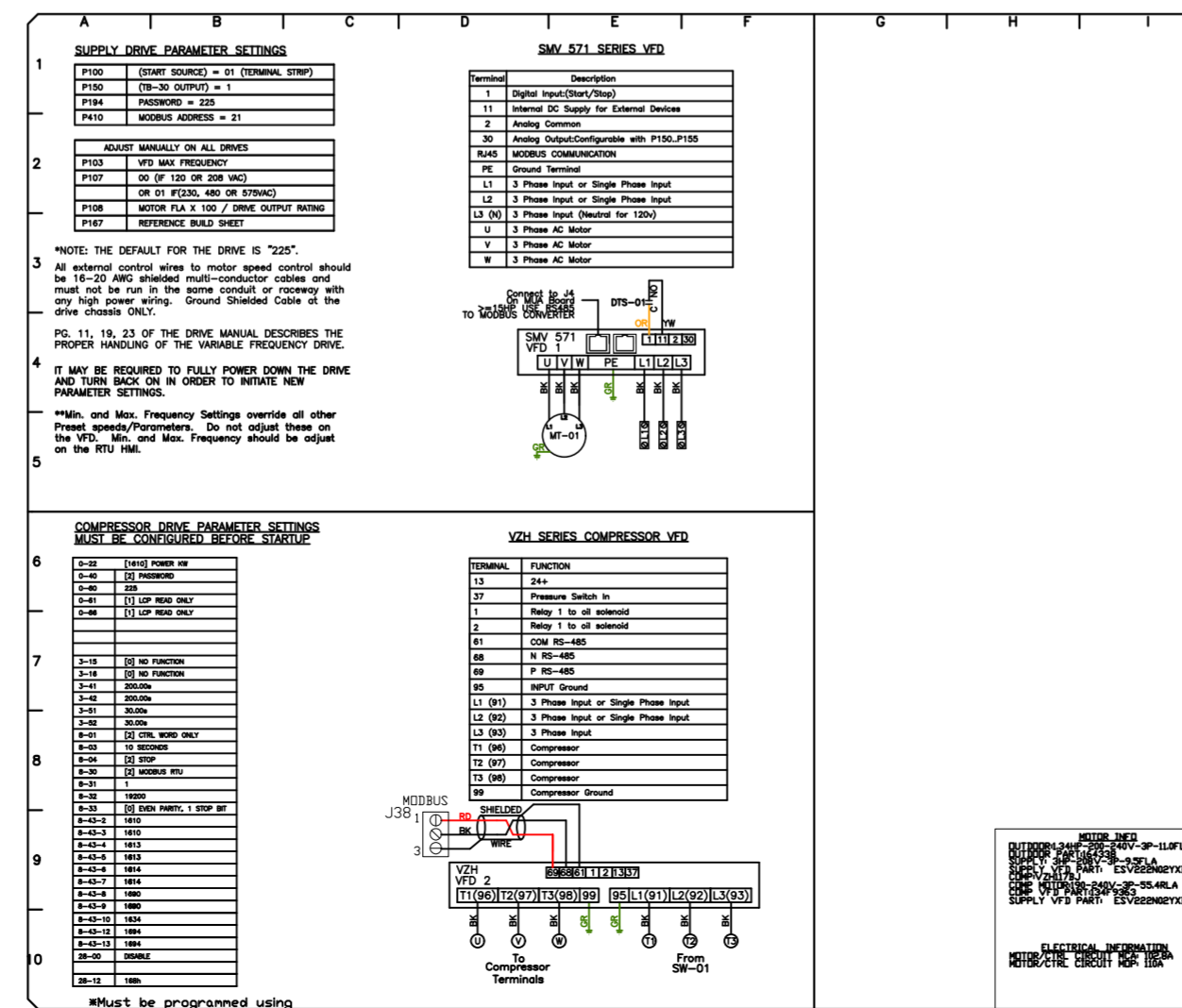
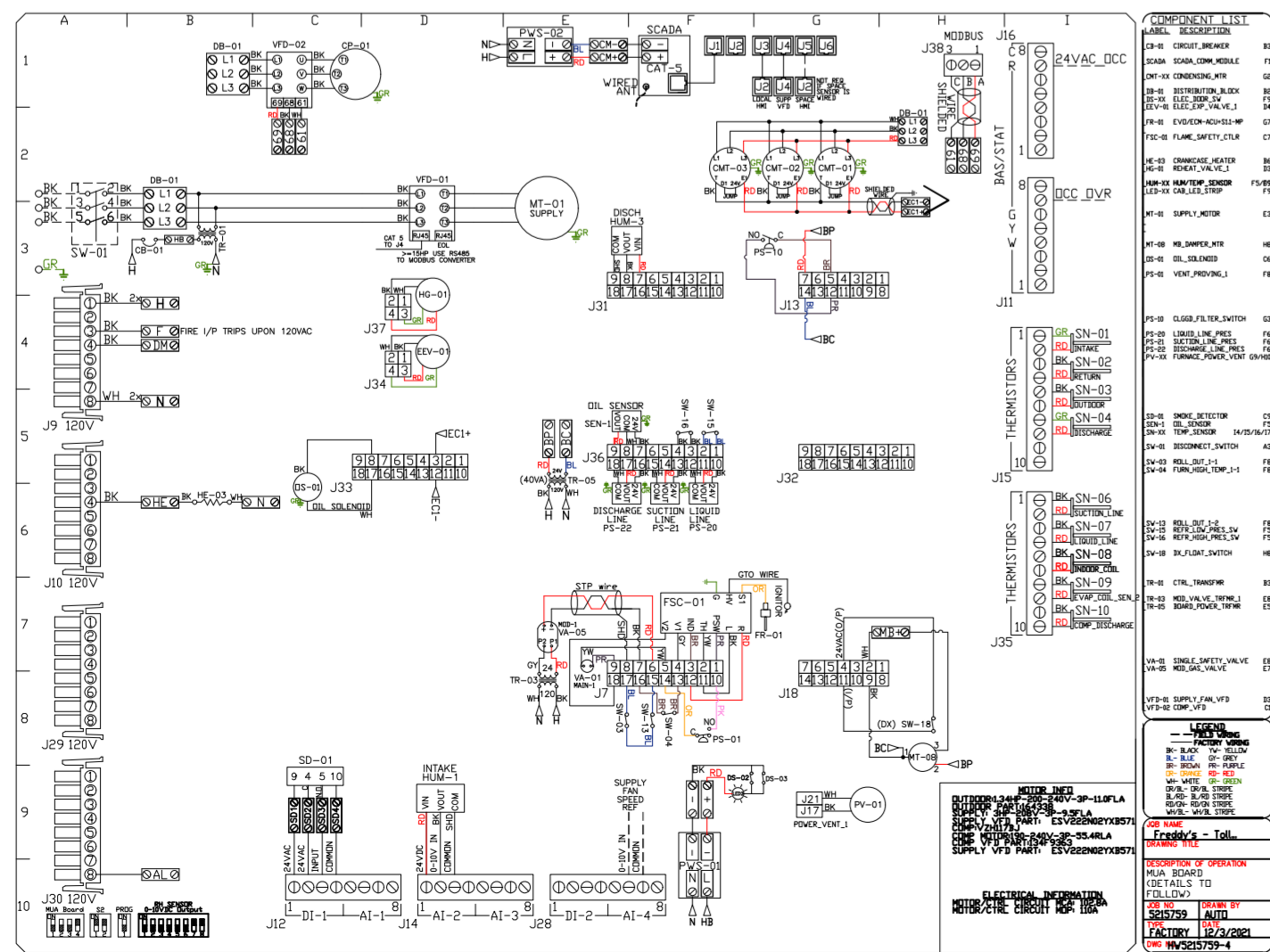
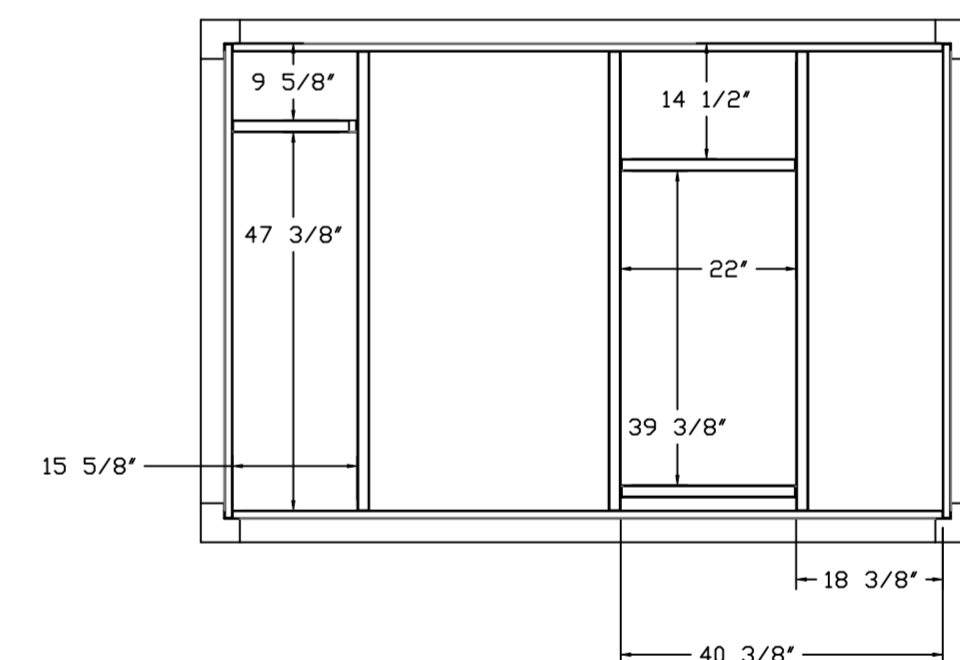
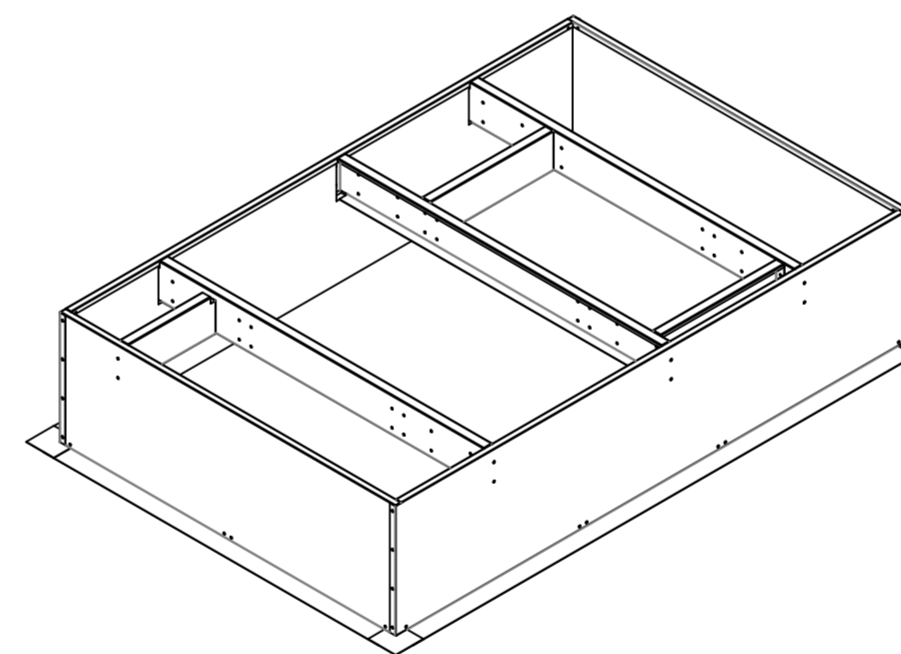
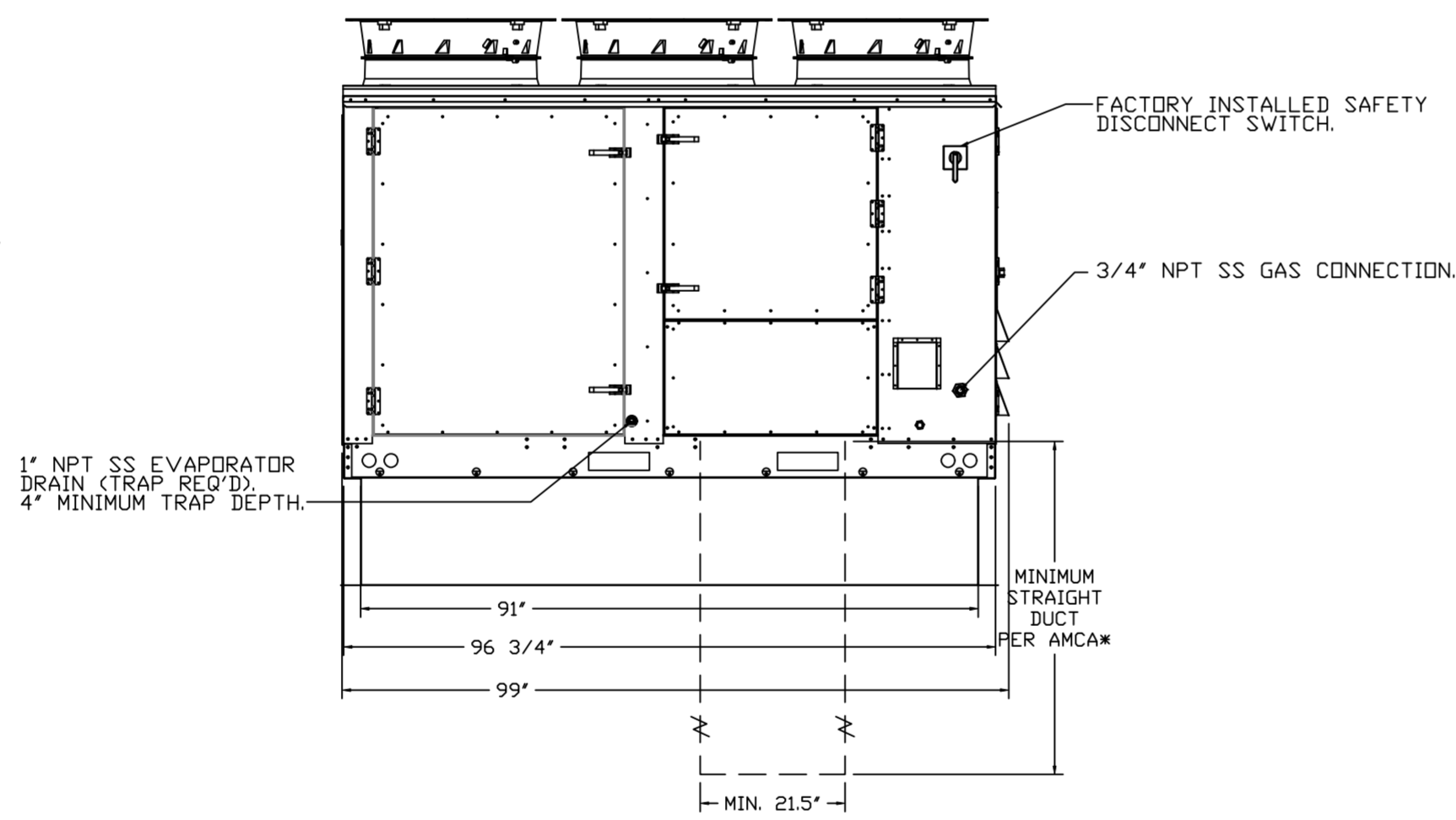
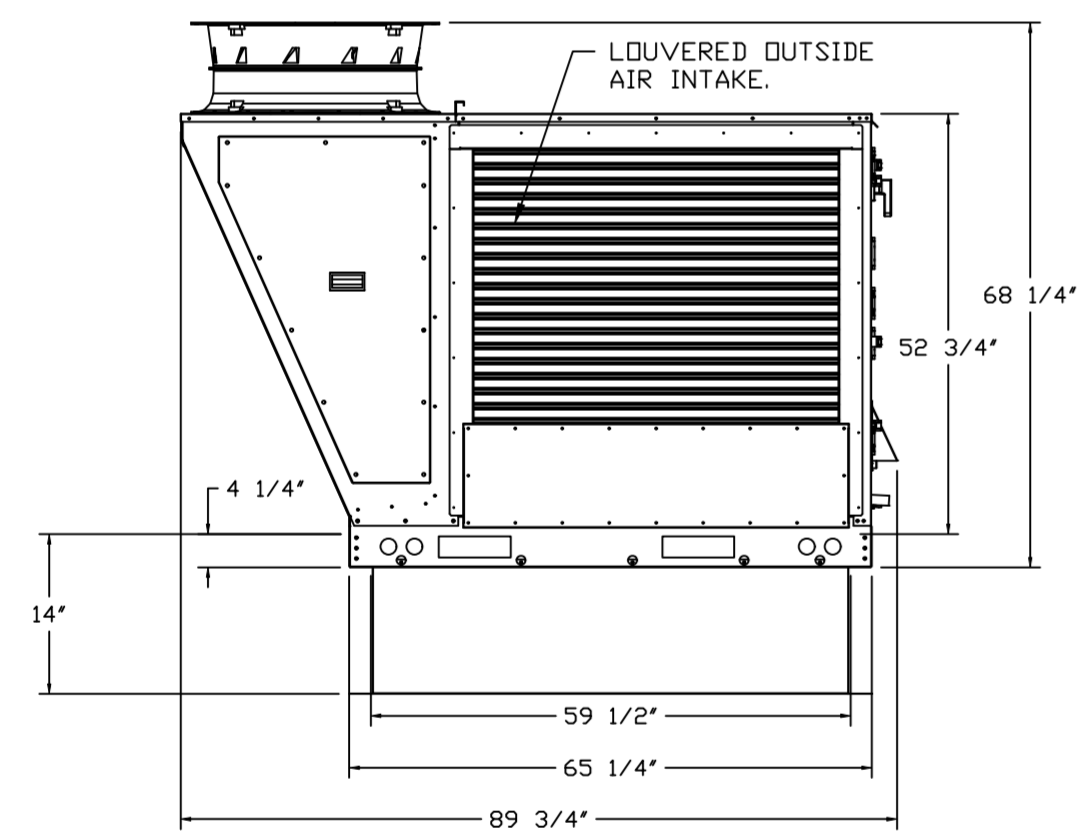
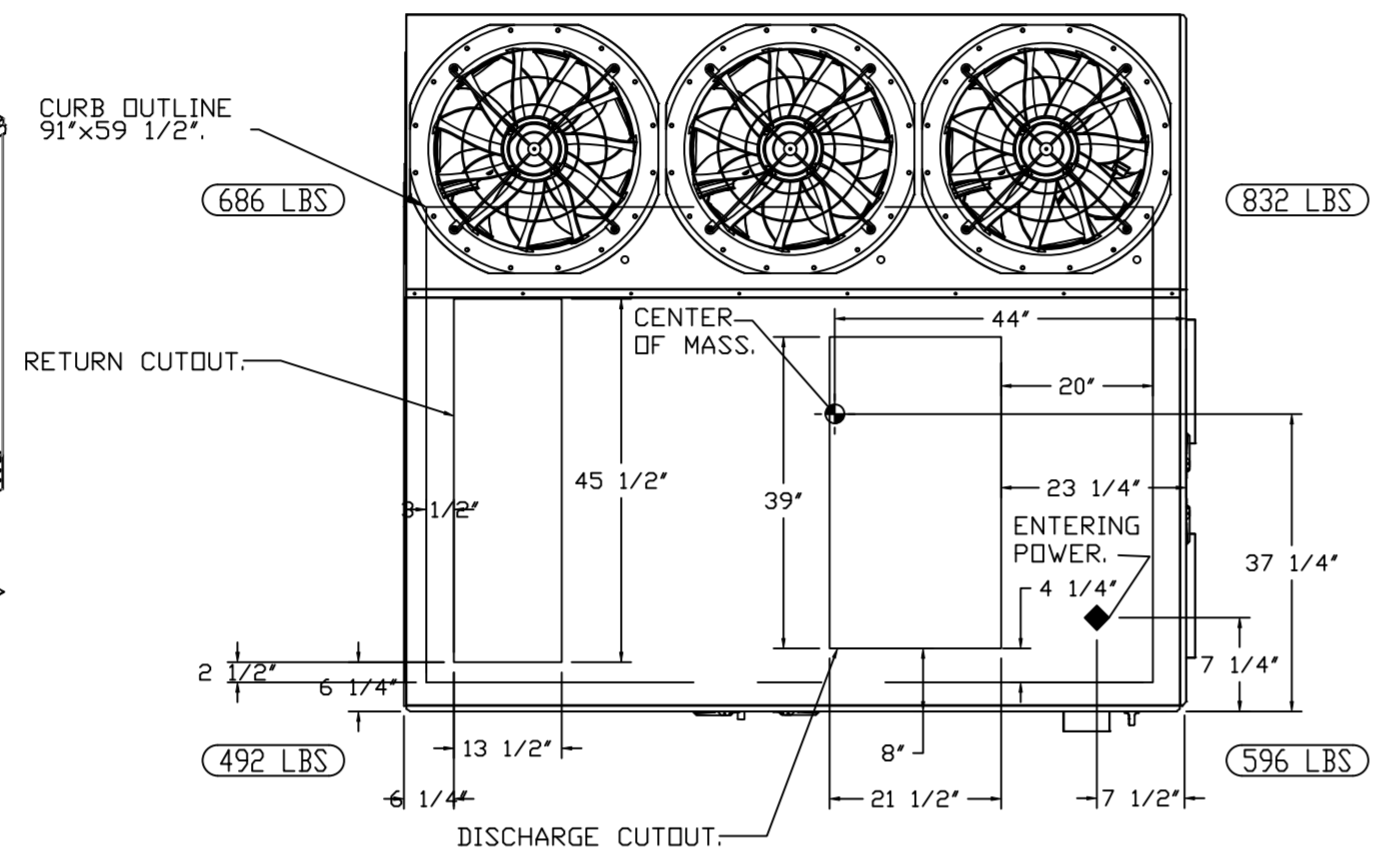
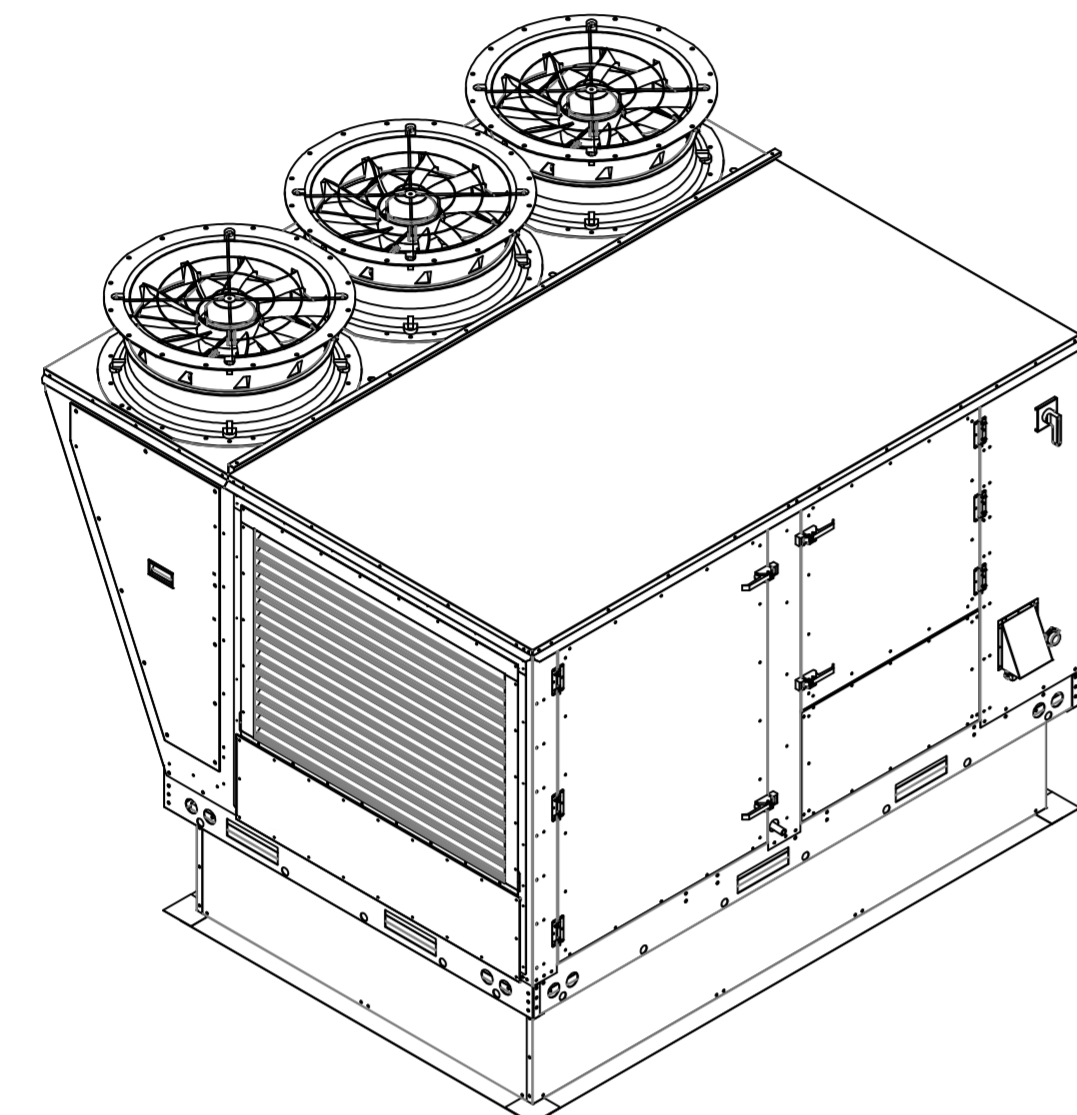
MASTER DRAWING

SHEET NO.  
2

NOTES:

- DO NOT OBSTRUCT OUTSIDE AIR INLET, OUTSIDE AIR COIL OR OUTSIDE AIR FAN.
- DENOTES CORNER WEIGHT.
- ROOF OPENING MUST BE 2" SMALLER THAN CURB DIMENSIONS IN BOTH DIRECTIONS.

\*NOTE: SUPPLY DUCT MUST BE INSTALLED TO MEET SMACNA STANDARDS. A MINIMUM STRAIGHT DUCT LENGTH MUST BE MAINTAINED DOWNSTREAM OF UNIT DISCHARGE AS OUTLINED IN AMCA PUBLICATION 201. WHEN USING RECTANGULAR DUCTWORK, ELBOWS MUST BE RADIUS THROAT, RADIUS BACK WITH TURNING VANES. FLEXIBLE DUCTWORK AND SQUARE THROAT/SQUARE BACK ELBOWS SHOULD NOT BE USED. ANY TRANSITION AND/OR TURNS IN THE DUCTWORK WILL CAUSE SYSTEM EFFECT. SYSTEM EFFECT WILL DRASTICALLY INCREASE STATIC PRESSURE AND REDUCE AIRFLOW. DO NOT RELY ON UNIT TO SUPPORT DUCT IN ANY WAY. FAILURE TO PROPERLY SIZE DUCTWORK MAY CAUSE SYSTEM EFFECTS AND REDUCE PERFORMANCE OF THE EQUIPMENT. SUGGESTED STRAIGHT DUCT SIZE IS 21.5" x 39".



OPTIONS

- INLET PRESSURE GAUGE, 0-35".
- MANIFOLD PRESSURE GAUGE, 0 TO 10" WC, 1 FURNACE.
- RTU TOTAL CFM MONITORING.
- SINGLE POINT ELECTRICAL CONNECTION FOR RTU. 750VA TRANSFORMER USED. IF A NON-DCV PREWIRE CONTROLS THIS UNIT, THE #28, #47, "MA", OR "E2" PREWIRE OPTION MUST BE SELECTED. DOES NOT PROVIDE SUPPLY STARTER IN PREWIRE.
- CASLINK BUILDING MONITORING SYSTEM - INTERNET OR CELLULAR CONNECTION REQUIRED.
- RTU3 DOWN DISCHARGE.
- 2" MERV 13 FILTERS FOR RTU3 (QTY. 4).
- 2" MERV 8 FILTERS FOR RTU3 (QTY. 4).
- OVERHEAT STAT.
- VFD FACTORY MOUNTED AND WIRED IN RTU COMMERCIAL CONTROL VESTIBULE.
- HIGH AMBIENT - 20 TON MODULATING COOLING OPTION, 208/230V. R410A REFRIGERANT, VARIABLE SPEED COMPRESSOR, ECM CONDENSING FANS. USED FOR SUMMER CONDITIONS ABOVE 110F DEGREES.
- 20 TON MODULATING REHEAT OPTION - SPACE DEWPOINT CONTROL.
- RTU3 CURB DUCT HANGER.
- OCCUPIED SCHEDULING.
- CLOGGED FILTER SWITCH - NOTIFICATION ON HMI.
- RTU INTAKE/RETURN DAMPER - SCHEDULED ON PERCENTAGE CONTROL.
- RTU3 DOWN RETURN.
- VAV PACKAGE W/ 0-10VDC INPUT CONTROL (571 VFD INCLUDED).
- RTU RETURN MOUNTED SMOKE DETECTOR AND SAMPLING TUBE - FACTORY INSTALLED.
- RTU3 HAIL GUARD.
- 5 YEAR ENTIRE UNIT PARTS WARRANTY, 10 YEAR ENTIRE UNIT PARTS WARRANTY WITH REMOTE MONITORING AND CAPTIVEAIRE SERVICE CONTRACT, 25 YEAR STAINLESS STEEL FURNACE PARTS WARRANTY (SEE ADDITIONAL DETAILS).

**REVISIONS**

DESCRIPTION	DATE:

**CAPTIVEAIRE**

www.captiveaire.com

HBT Foodservice

104 W 8th St Suite 204, Kansas City, MO, 64105 PHONE: (816) 221-8575 FAX: (816) 221-8311 EMAIL: reg9@captveaire.com

Freddy's - Tolleson, AZ  
TOLLESON, AZ, 85353

DATE: 12/3/2021  
DWG.#: 5215759  
DRAWN BY: michael.co  
SCALE: 1/2" = 1'-0"  
MASTER DRAWING

SHEET NO. 3

