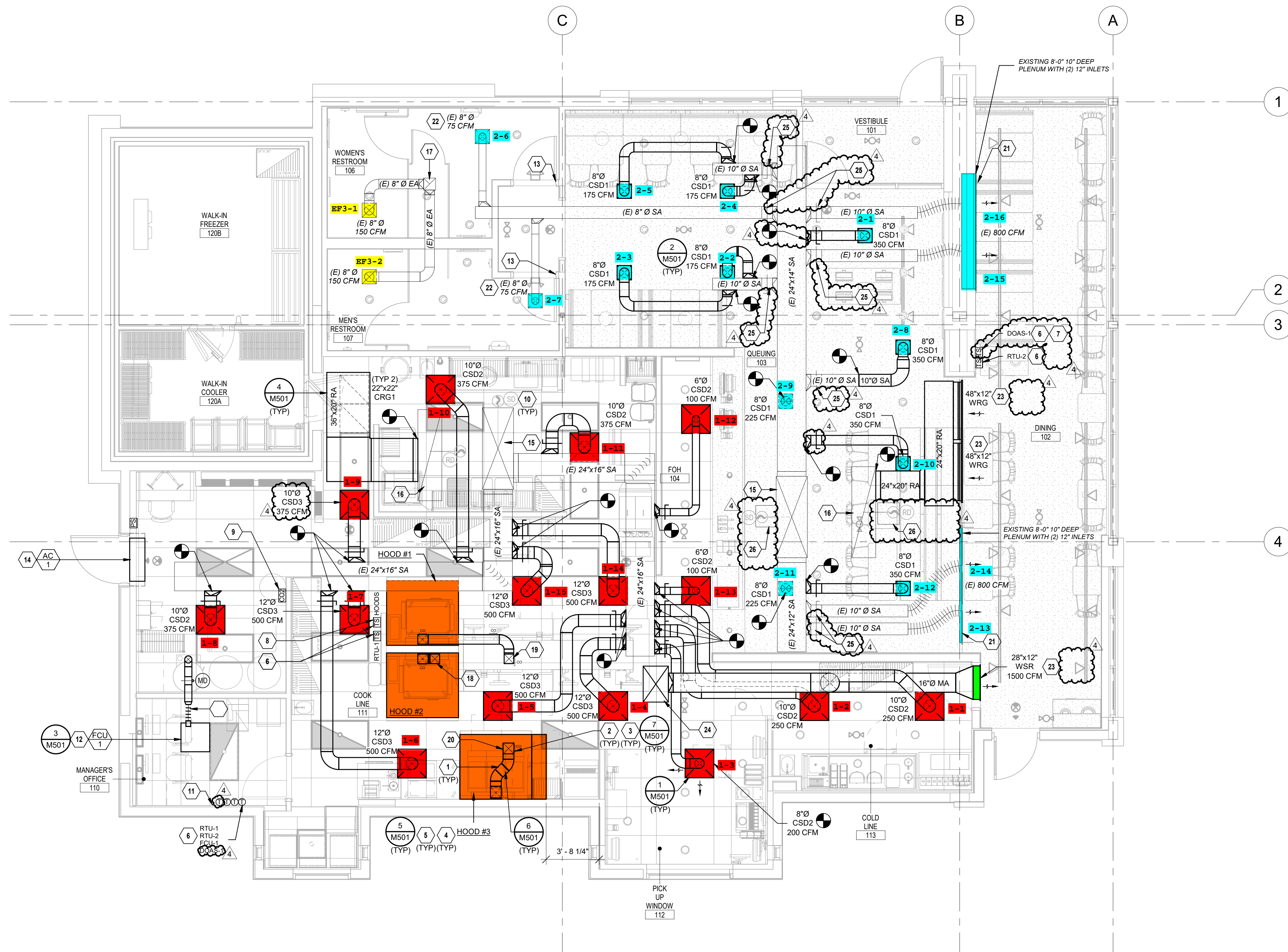


Copyright: These Drawings are the property of DP3 Architects, Ltd., and reuse on any other project without written permission will result in legal action.



1 MECHANICAL FLOOR PLAN
1/4" = 1'-0"

MECHANICAL GENERAL NOTES:

- DO NOT ROUTE ANY DUCTWORK OR PIPING ABOVE ELECTRICAL PANELS. REFER TO SHEET M001 FOR ADDITIONAL GENERAL NOTES AND REQUIREMENTS.
- REFER TO DETAILS AND SCHEDULES SHEETS FOR FURTHER INFORMATION.
- MOUNT ALL THERMOSTATS AND SENSORS CONTROLLING HVAC EQUIPMENT AT 48" AFF UNLESS OTHERWISE NOTED.

MECHANICAL PLAN NOTES:

- TYPE I GREASE HOOD EXHAUST DUCTWORK SHALL BE MINIMUM 18 GAUGE STEEL OR MINIMUM 18 GAUGE STAINLESS STEEL WITH LIQUID TIGHT WELDS.
- INSTALL ACCESS PANELS FOR CLEANING AS REQUIRED BY NFPA 96 AND LOCAL CODES. TRANSITION GREASE DUCTWORK AS REQUIRED TO HOOD AND FAN CONNECTIONS. PROVIDE 45° MAX OFFSETS AS REQUIRED TO COORDINATE WITH STRUCTURE. PROVIDE RADIUS ELBOWS WITHOUT TURNING VANES. SLOPE HORIZONTAL GREASE DUCT BACK TOWARDS HOOD AT MINIMUM OF 1/4" PER LINEAL FOOT. GREASE DUCTS SHALL BE CONTAINED IN A UL APPROVED GREASE DUCT WRAP SYSTEM.
- INSTALL "DUCTMATE ULTIMATE DOOR" ON DUCTS 12" OR LARGER AND INSTALL "DUCTMATE F2 SANDWICH ACCESS DOOR" FOR DUCTS LESS THAN 12" ON GREASE DUCT FOR CLEANING IN LOCATION SHOWN AT A MINIMUM AND AS REQUIRED BY NFPA 96 AND LOCAL CODES.
- TYPE I HOODS SHALL BE FURNISHED COMPLETE WITH INTERNALLY PIPED FIRE SUPPRESSION SYSTEM AND EXTERNAL FOAM SUPPLY BOTTLES WITH REMOTE PULL CONTROLS AND IN COMPLIANCE WITH NFPA 96. DIVISION 23 SHALL COORDINATE COMPLETE INSTALLATION WITH FIRE PROTECTION CONTRACTOR TO MEET APPROVAL OF LOCAL INSPECTOR AND CODE COMPLIANCE INCLUDING TESTING.
- HOOD SHALL OVERHANG THE COOKING SURFACE BY AT LEAST 6" ON BOTH SIDES.
- MOUNT THERMOSTATS, HUMIDITY SENSORS, AND TEMPERATURE SENSORS ON WALL. THERMOSTATS AND SENSORS SHALL BE LABELED TO MATCH THE UNIT TAG AND CORRESPOND TO THE ELECTRICAL LEGEND IN THE ELECTRICAL PANELBOARD SERVING THE EQUIPMENT. COORDINATE COLOR WITH ARCHITECT.
- COMBINATION TEMPERATURE SENSOR AND HUMIDITY SENSOR.
- MOUNT TEMPERATURE SENSOR PROVIDED WITH KITCHEN EXHAUST HOODS ON WALL.
- CARBON DIOXIDE SENSOR WITH REMOTE ALARM REPEATER FURNISHED BY OWNER'S CO2 VENDOR AND LOCATED AT 12" AFF. THE SENSOR SHALL BE EQUIPPED WITH A LOCAL AUDIBLE AND VISUAL ALARM. THE LOW-LEVEL ALARM SHALL ACTIVATE THE LOCAL AUDIBLE AND VISUAL ALARM. IF THE BUILDING HAS A FIRE ALARM, PROVIDE THE APPROPRIATE FIRE ALARM INTERFACE MODULE TO INTERLOCK WITH THE BUILDING FIRE ALARM SYSTEM. THE HIGH-LEVEL CO2 ALARM SHALL SIGNAL BUILDING FIRE ALARM WHEN EQUIPPED. LOW LEVEL ALARM - 0.5% = 5,000 PPM, HIGH LEVEL ALARM - 3.0% = 30,000 PPM.
- EXISTING DUCT SMOKE DETECTOR IN SUPPLY & RETURN AIR PLENUMS.
- INSTALL EMERGENCY ALARM IN MANAGER'S OFFICE TO INDICATE CARBON DIOXIDE DETECTION IN MECHANICAL ROOM. PROVIDE LIGHT IN OFFICE WITH TAG FOR EACH ALARM.
- REFRIGERANT PIPING UP TO CU-1 ON ROOF. REF. 1M150.
- CONTRACTOR TO COORDINATE 1" UNDERCUT ON DOOR FOR EXHAUST AIR PATH.
- AIR CURTAIN MOUNTED ABOVE DOOR. INSTALL PER MANUFACTURER'S RECOMMENDATIONS.
- EXISTING SA DUCT THROUGH ROOF CONNECTED TO EXISTING UNIT TO REMAIN.
- EXISTING RA DUCT THROUGH ROOF CONNECTED TO EXISTING UNIT TO REMAIN.
- EXISTING EA DUCT THROUGH ROOF CONNECTED TO EXISTING UNIT TO REMAIN.
- 8"x8" GREASE EXHAUST DUCT UP TO KEF-1 ON ROOF.
- 8"x8" GREASE EXHAUST DUCT UP TO KEF-2 ON ROOF.
- 9"x9" GREASE EXHAUST DUCT UP TO KEF-3 ON ROOF.
- EXISTING LINEAR SUPPLY DIFFUSERS TO REMAIN. CLEAN SLOTS PRIOR TO INSTALLATION. ADJUST LOCATION OF SLOTS AS REQUIRED.
- REBALANCE DIFFUSER TO AIRFLOW SHOWN.
- MOUNT BOTTOM OF SUPPLY OR RETURN GRILLE AT 10'-0" A.F.F.
- PROVIDE MAKEUP AIR DUCT THROUGH ROOF. FULL SIZE OF UNIT OPENING, AND CONNECT TO UNIT WITH FLEXIBLE CONNECTOR. TRANSITION 45 DEGREES THROUGH ROOF CURB.
- REMOVE EXISTING BALANCING DAMPER IN DUCT. REPLACE WITH CABLE OPERATOR DAMPER IF CONNECTING DIRECTLY TO FAN CURB.
- PROVIDE ACCESS PANEL TO ACCESS EXISTING DUCT SMOKE DETECTORS ABOVE HARD CEILING IN DINING AREA. REFERENCE ARCHITECTURAL PLANS FOR SIZE AND LOCATION.

ALL GREASE DUCT TO BE WATER TESTED BY ENVIROMATIC AT MECHANICAL CONTRACTOR'S EXPENSE. CONTACT OWNER'S NATIONAL ACCOUNT VENDOR.

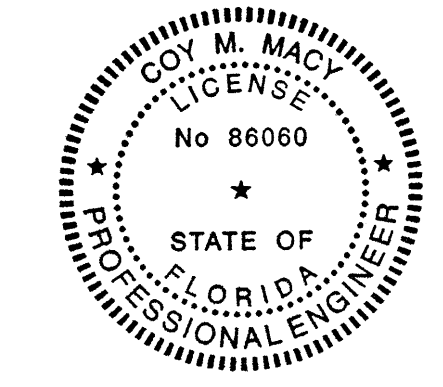
ENVIROMATIC
DON PFLEDERER
1.800.325.8476
inspectors@enviromatic.com

THE BUILDINGS HVAC SYSTEMS SHALL BE BALANCED BY NATIONAL TAB (NO EXCEPTIONS) AND CONTRACTED BY THE GENERAL CONTRACTOR.

CONTACT:
WILL TURNBOUGH
will@natortab.com
855-682-6822 ext704

THIS ITEM HAS BEEN ELECTRONICALLY SIGNED AND SEALED BY COY M. MACY ON THE DATE LISTED BELOW USING A DIGITAL SIGNATURE.
PRINTED COPIES OF THIS DOCUMENT ARE NOT CONSIDERED SIGNED AND SEALED AND THE SIGNATURE MUST BE VERIFIED ON ANY ELECTRONIC COPIES.

HENDERSON ENGINEERS
8345 LENEXA DRIVE, SUITE 300
LENEXA, KS 66214
TEL 913.142.5000 FAX 913.142.5001
WWW.HENDERSONENGINEERS.COM
235000373
FL REGISTRY NO. EB 7606
EXPIRES 2/28/2025



06/10/2024

COY M. MACY
LICENSE # 86060

Brian S. Thomas,
Architect

DP3 Architects, Ltd.
15 South Main Street, Suite 400
Greenville, SC 29601
864.232.8200
www.DP3architects.com

Project

SHAKE SHACK

SHAKE SHACK #1610
WESLEY CHAPEL, FL

Project Number 23193
Drawn By Author
Checked By Checker
Date 11 MAR 2024

Revisions
11 MAR 2024 ISSUE FOR PERMIT
19 APR 2024 PLAN REVIEW
02 MAY 2024 PLAN REVIEW
10 JUN 2024 ISSUE FOR CONSTRUCTION

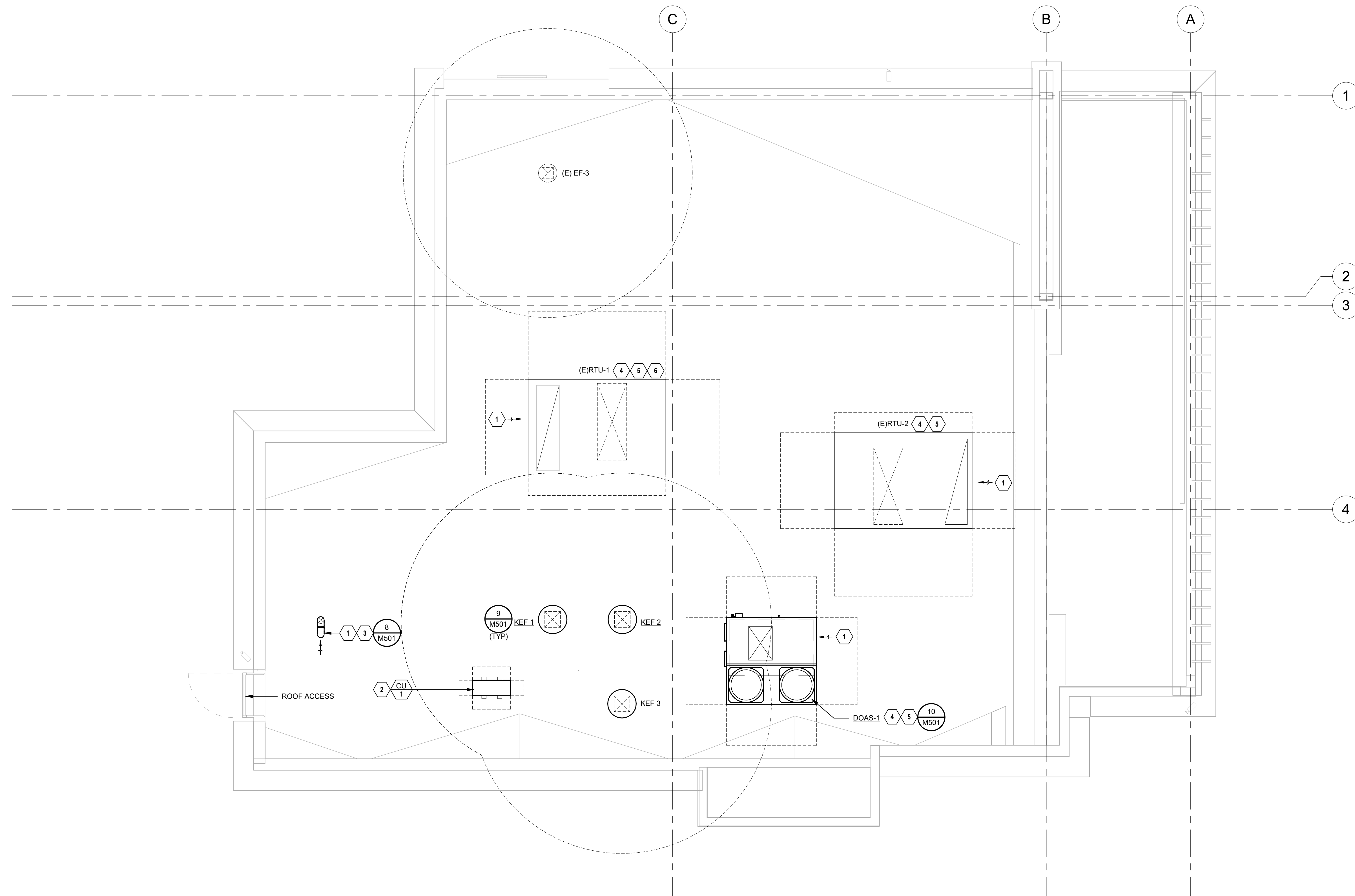
Drawing

MECHANICAL FLOOR PLAN

M101

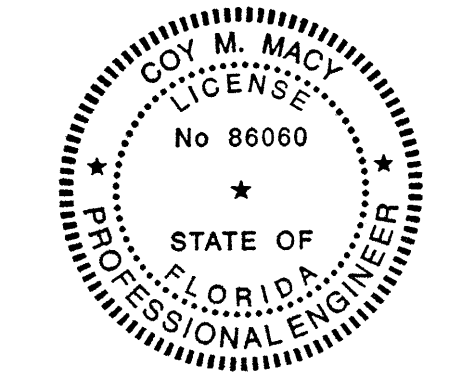
Copyright : These Drawings are the property of DP3 Architects, Ltd., and reuse on any other project without written permission will result in legal action.

- MECHANICAL PLAN NOTES:**
- 1 MAINTAIN ALL OUTSIDE AIR INTAKES A MINIMUM OF 10'-0" RADIUS FROM EXHAUST, TYPICAL.
 - 2 CONTRACTOR SHALL VERIFY WITH EQUIPMENT SUPPLIER EXACT ROUTING AND SIZE OF INSULATED REFRIGERANT PIPING. SINGLE LINESHOWN FOR CLARITY. INSTALL PER MANUFACTURERS RECOMMENDATIONS.
 - 3 TURN DOWN #3 INTAKE AND END OPEN OVER ROOF (MIN. 24") WITH INSECT SCREEN.
 - 4 REFERENCE PLUMBING DRAWINGS FOR CONDENSATE DRAIN ROUTING AND TERMINATION REQUIREMENTS.
 - 5 CONTRACTOR SHALL COORDINATE WITH NATIONAL TAB TO PROVIDE UV-PHI INDOOR AIR PURIFICATION SYSTEM, MODEL PHI-PKG-24V. INSTALL IN UNIT BLOWER COMPARTMENT PER MANUFACTURERS INSTRUCTIONS.
 - 6 CONTRACTOR TO PROVIDE POWERED EXHAUST ACCESSORY IF NOT EXISTING.



1 MECHANICAL ROOF PLAN
1/4" = 1'-0"

HENDERSON ENGINEERS
8345 LENEKA DRIVE, SUITE 300
LENEKA, KS 66214
TEL 913.722.5000 FAX 913.742.5001
WWW.HENDERSONENGINEERS.COM
2350003773
FL REGISTRY NO. EB 7606
EXPIRES 2/28/2025



06/10/2024

COY M. MACY
LICENSE # 86060

Brian S. Thomas,
Architect

DP3 Architects, Ltd.
15 South Main Street, Suite 400
Greenville, SC 29601
864.232.8200
www.DP3architects.com

Project

SHAKE SHACK

SHAKE SHACK #1610
WESLEY CHAPEL, FL

Project Number 23193
Drawn By Author
Checked By Checker
Date 11 MAR 2024

Revisions		
1	11 MAR 2024	ISSUE FOR PERMIT
1	19 APR 2024	PLAN REVIEW
2	02 MAY 2024	PLAN REVIEW
4	10 JUN 2024	ISSUE FOR CONSTRUCTION

THIS ITEM HAS BEEN ELECTRONICALLY SIGNED AND SEALED BY COY M. MACY ON THE DATE LISTED BELOW USING A DIGITAL SIGNATURE. PRINTED COPIES OF THIS DOCUMENT ARE NOT CONSIDERED SIGNED AND SEALED AND THE SIGNATURE MUST BE VERIFIED ON ANY ELECTRONIC COPIES.

Drawing

MECHANICAL ROOF PLAN

M150