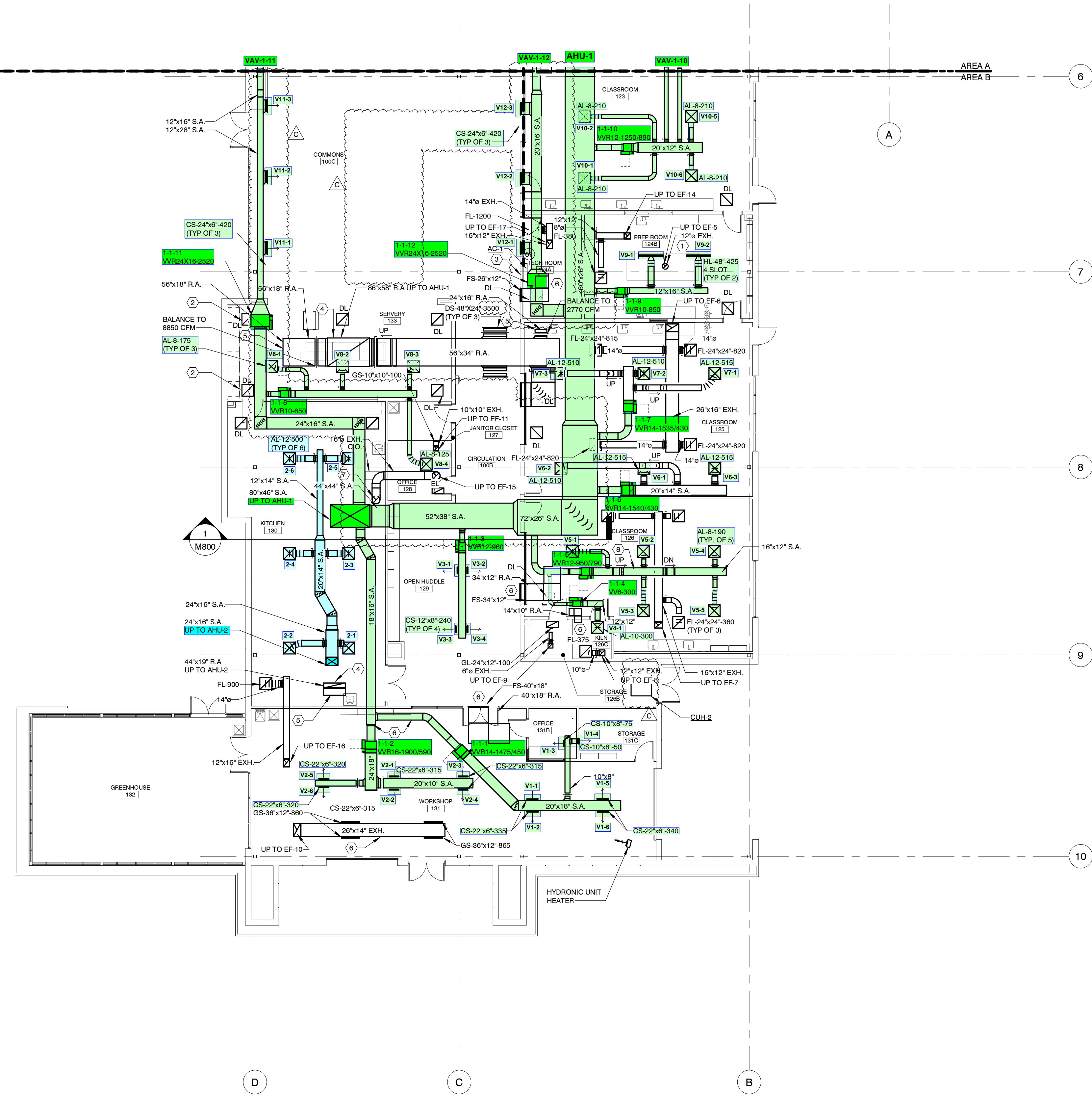


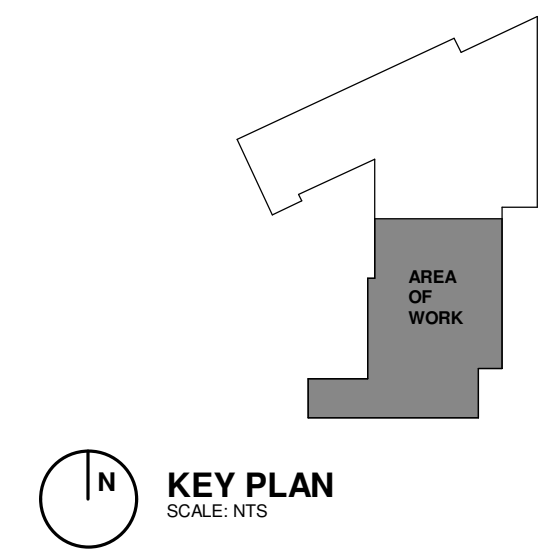
COPYRIGHT RESERVED BY WSA STUDIO. THE DRAWING AND THE IDEAS EXPRESSED HEREIN ARE AND SHALL REMAIN THE SOLE PROPERTY OF WSA STUDIO, AND ARE NOT TO BE USED IN WHOLE OR IN PART, FOR ANY OTHER PURPOSES, OR BY ANY OTHER PARTIES, THAN THOSE PROPERLY AUTHORIZED BY CONTRACT. WITHOUT THE EXPRESS WRITTEN AUTHORIZATION BY WSA STUDIO.

2.1



1 LEVEL 1 MECHANICAL PLAN AREA B
SCALE: 3/32" = 1'-0"

HAWA engineers HAWA Incorporated 980 OLD HENDERSON ROAD COLUMBUS, OHIO 43229 614-431-1711 4055 EXECUTIVE PARK DRIVE, SUITE 400 CINCINNATI, OHIO 45241 513-771-6640	
HAWA PROJECT No. 22124 DESIGNED BY J.J. PORTER, P.E.	DRAWN BY TSK CHECKED BY NBH



KEY PLAN
SCALE: NTS

GENERAL NOTES

- DDC SPACE TEMPERATURE AND HUMIDITY SENSORS ARE SHOWN ON THE MECHANICAL PIPING PLAN FOR CLARITY.
- ALL DUCTWORK IN EXPOSED AREAS TO BE TIGHT TO JOIST/BEAMS.
- LOW PRESSURE DUCTWORK IN EXPOSED AREAS TO BE LINED. PROVIDE K-27 FOR EXPOSED MEDIUM PRESSURE DUCTWORK. ALL DUCTWORK IN EXPOSED AREAS TO BE CLEANED AND PREPPED FOR PAINTING. PAINTING TO BE DONE BY GENERAL CONTRACTOR.

CODED NOTES

- EXHAUST DUCT UP FROM FUME HOOD TO EXHAUST FAN ON ROOF.
- LINED TRANSFER DUCT ON RETURN GRILLE. SEE DETAIL ON M801.
- REFRIGERANT LINES ROUTED FROM AC-1 UP TO CU-1 MOUNTED ON ROOF.
- ALL RETURN DUCT TO BE LINED.
- COVER DUCT OPENING WITH 1/2" WIRE MESH.
- LINED TRANSFER DUCT. REFER TO DETAIL ON M801.
- 16" EXH DN TO KITCHEN HOOD. CONNECT TO HOOD PER MANUFACTURERS RECOMMENDATIONS.
- DUCT TO BE RAN IN BETWEEN JOIST.

WSA

882 S. FRONT STREET
COLUMBUS, OH 43206
614.824.1633

HAWA
engineers

EDGE
PLANNING
LANDSCAPE ARCHITECTURE
URBAN DESIGN

Jezerinac Geers
Structural Engineering

MARKER

**GLOBAL IMPACT STEM
ACADEMY**
GISA - UPPER CAMPUS

PROJECT ADDRESS
570 E. Leffel Ln,
Springfield, OH
45505

C	07/13/2023	ADDENDUM C

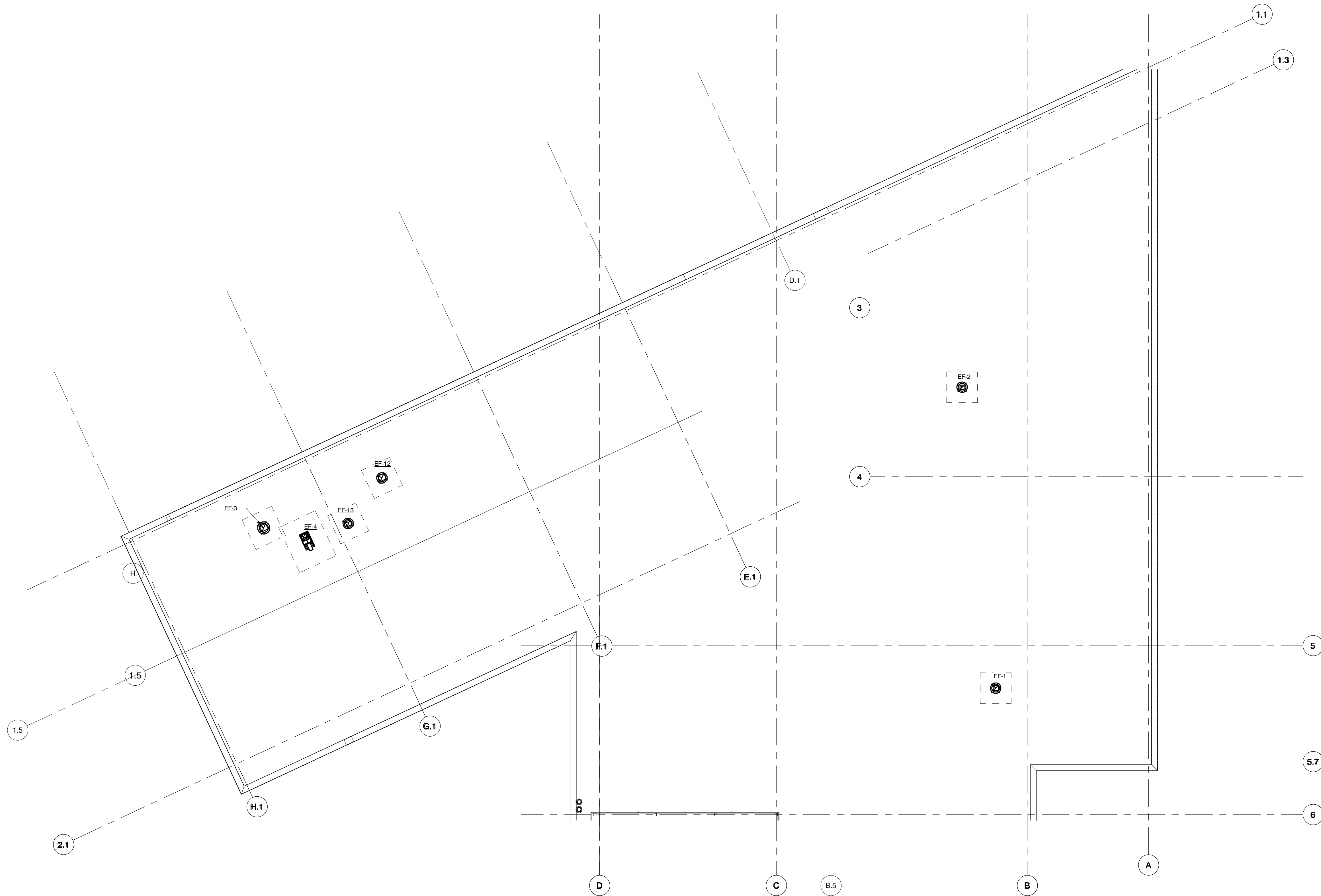
PERMIT SET
DATE PRINTED
23 JUNE 2023
PROJECT NUMBER
202291.00

DRAWN BY: HAWA CHECKED BY: HAWA

LEVEL 1 MECHANICAL PLAN - AREA B

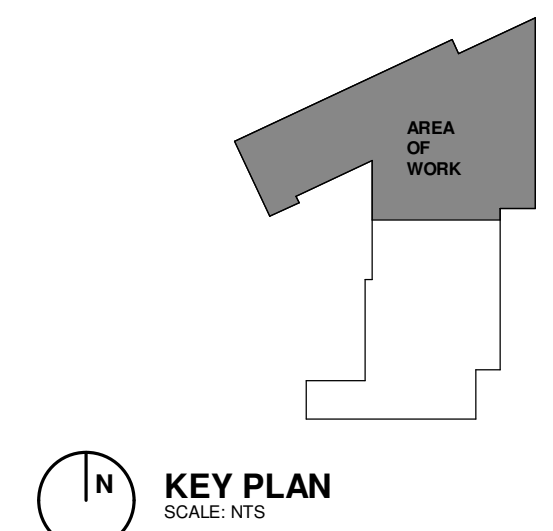
M101

COPYRIGHT RESERVED BY WSA STUDIO. THE DRAWING AND THE IDEAS EXPRESSED HEREIN ARE AND SHALL REMAIN THE SOLE PROPERTY OF WSA STUDIO, AND ARE NOT TO BE USED IN WHOLE OR IN PART, FOR ANY OTHER PURPOSES, OR BY ANY OTHER PARTIES, WITHOUT THE SPECIFIC WRITTEN AUTHORIZATION BY WSA STUDIO.



1 ROOF PLAN AREA A
 SCALE: 3/32" = 1'-0"

HAWA <small>engineers</small>		<small>HAWA Incorporated</small> <small>880 OLD HENDERSON ROAD</small> <small>COLUMBUS, OHIO 43229 614-451-1711</small> <small>4055 EXECUTIVE PARK DRIVE, SUITE 400</small> <small>CINCINNATI, OH 45241 513-771-6640</small>	
<small>HAWA PROJECT No.</small> 22124	<small>DRAWN BY</small> TSK	<small>DESIGNED BY</small> J.J. PORTER, P.E.	<small>CHECKED BY</small> NBH



KEY PLAN
 SCALE: NTS

WSA
882 S. FRONT STREET
COLUMBUS, OH 43206
614.824.1633

HAWA
engineers

EDGE
PLANNING
LANDSCAPE ARCHITECTURE
URBAN DESIGN

Jezerinac Geers
Structural Engineering

MARKER

GLOBAL IMPACT STEM
ACADEMY
 GISA - UPPER CAMPUS

PROJECT ADDRESS
 570 E. Leffel Ln,
 Springfield, OH
 45505



PERMIT SET
DATE PRINTED
 23 JUNE 2023
PROJECT NUMBER
 202291.00

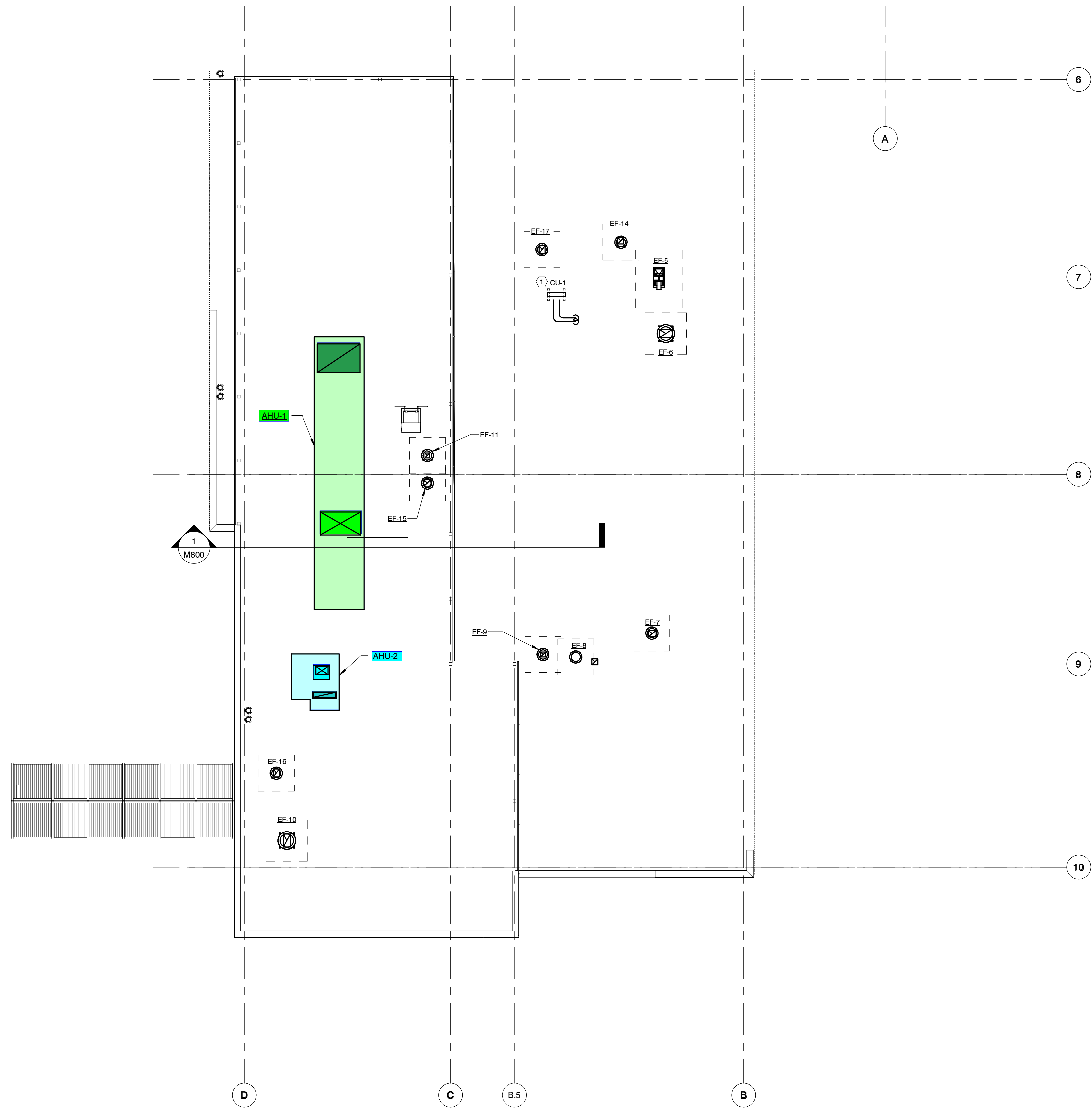
DRAWN BY: HAWA CHECKED BY: HAWA

ROOF MECHANICAL PLAN -
AREA A

M200

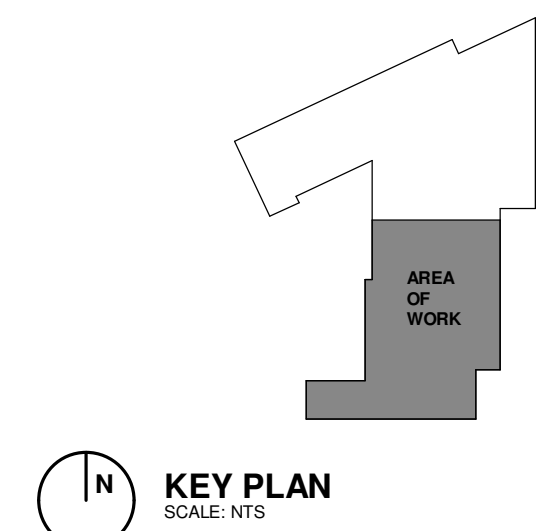
COPYRIGHT RESERVED BY WSA STUDIO. THE DRAWING AND THE IDEAS EXPRESSED HEREIN ARE AND SHALL REMAIN THE SOLE PROPERTY OF WSA STUDIO, AND ARE NOT TO BE USED IN WHOLE OR IN PART, FOR ANY OTHER PURPOSES, OR BY ANY OTHER PARTIES, WITHOUT THE SPECIFIC WRITTEN AUTHORIZATION BY WSA STUDIO.

2.1



1 ROOF PLAN AREA B
SCALE: 3/32" = 1'-0"

HAWA engineers		HAWA Incorporated 880 OLD HENDERSON ROAD COLUMBUS, OHIO 43229 614-451-1711 4055 EXECUTIVE PARK DRIVE, SUITE 400 CINCINNATI, OHIO 45241 513-771-6640	
HAWA PROJECT No. 22124	DESIGNED BY J.J. PORTER, P.E.	DRAWN BY TSK	CHECKED BY NBH



CODED NOTES

1. MOUNT ON PATE TYPE CURB SIMILAR TO ES-1.
2. PROVIDE CURB FOR RTU. CONDENSTATE TO SPLASH BLOCK ON ROOF.

WSA
882 S. FRONT STREET
COLUMBUS, OH 43206
614.824.1633

HAWA
engineers

EDGE
PLANNING
LANDSCAPE ARCHITECTURE
URBAN DESIGN

Jezerinac Geers
Structural Engineering

MARKER

GLOBAL IMPACT STEM ACADEMY

GISA - UPPER CAMPUS

PROJECT ADDRESS
570 E. Leffel Ln,
Springfield, OH
45505



PERMIT SET
DATE PRINTED
23 JUNE 2023
PROJECT NUMBER
202291.00

DRAWN BY: HAWA CHECKED BY: HAWA

ROOF MECHANICAL PLAN - AREA B

M201