

HOOD INFORMATION - JOB#5721549

HOOD NO	TAG	MODEL	MANUFACTURER	LENGTH	MAX COOKING TEMP	TYPE	APPLIANCE DUTY	DESIGN CFM/FT	TOTAL EXH CFM	EXHAUST PLENUM RISER(S)						TOTAL SUPPLY CFM	HOOD CONSTRUCTION	HOOD CONFIG		
										WIDTH	LENG	HEIGHT	DIA	CFM	VEL			SP	END TO END	RDW
1	hd1-fry	3650 BD-2	CAPTIVEAIRE	10' 6"	600 DEG	I	HEAVY	181	1900			4"	14"	1900	1777	-1.108'	0	430 SS WHERE EXPOSED	ALONE	ALONE
2	psp-fry	126 MISC-PSP	CAPTIVEAIRE	10' 6"	300 DEG	I	N/A	0	0								1520	430 SS WHERE EXPOSED	ALONE	ALONE
3	hd2-grill	5424 ND-2-PSP-F	CAPTIVEAIRE	8' 0"	600 DEG	I	HEAVY	225	1800			4"	14"	1800	1684	-0.930'	1440	430 SS WHERE EXPOSED	ALONE	ALONE

PATENT NUMBERS

AC-PSP (UNITED STATES) - US PATENT 7963830 B2.
 AC-PSP WALL (CANADA) - CA PATENT 2820509.
 AC-PSP ISLAND (CANADA) - CA PATENT 2520330.

HOOD INFORMATION

HOOD NO	TAG	FILTER(S)				LIGHT(S)				UTILITY CABINET(S)				FIRE SYSTEM PIPING	HOOD HANGING WEIGHT		
		TYPE	QTY	HEIGHT	LENGTH	EFFICIENCY @ 7 MICRONS	QTY	TYPE	WIRE GUARD	LOCATION	SIZE	FIRE SYSTEM				ELECTRICAL	SWITCHES
1	hd1-fry	CAPTRATE SOLD FILTER	7	16"	16"	85% SEE FILTER SPEC	3	RECESSED ROUND	NO						YES	423 LBS	
2	psp-fry						0								NO	86 LBS	
3	hd2-grill	CAPTRATE SOLD FILTER	5	16"	16"	85% SEE FILTER SPEC	3	RECESSED ROUND	NO	RIGHT	12"x54"x24"	TANK FS	4.0/4.0/4.0	DCV-2111	1 LIGHT 1 FAN	YES	909 LBS

HOOD OPTIONS

HOOD NO	TAG	OPTION
1	hd1-fry	FIELD WRAPPER 41.00" HIGH FRONT, LEFT, RIGHT.
		BACKSPLASH 61.00" HIGH X 126.00" LONG 430 SS VERTICAL.
		BACKSPLASH 126.00" HIGH X 15.00" LONG 430 SS VERTICAL.
		BACKSPLASH 126.00" HIGH X 12.00" LONG 430 SS VERTICAL.
		BACKSPLASH - INSIDE CORNER 126.00" HIGH X 2.00" LEG LENGTH 430 SS VERTICAL.
		BACKSPLASH - OUTSIDE CORNER 61.00" HIGH X 2.00" LEG LENGTH 430 SS VERTICAL.
3	hd2-grill	RIGHT QUARTER END PANEL 26" TOP WIDTH, 0" BOTTOM WIDTH, 26" HIGH 430 SS.
		LEFT QUARTER END PANEL 26" TOP WIDTH, 0" BOTTOM WIDTH, 26" HIGH 430 SS.
		RISER SENSOR INSTALL 3IN DBL.
		FIELD WRAPPER 24.00" HIGH FRONT, LEFT, RIGHT.
		BACKSPLASH 80.00" HIGH X 108.00" LONG 430 SS VERTICAL.
		BACKSPLASH 126.00" HIGH X 4.00" LONG 430 SS VERTICAL.
		BACKSPLASH 126.00" HIGH X 84.00" LONG 430 SS VERTICAL.
		BACKSPLASH - OUTSIDE CORNER 126.00" HIGH X 2.00" LEG LENGTH 430 SS VERTICAL.
		RISER SENSOR INSTALL 3IN DBL.

PERFORATED SUPPLY PLENUM(S)

HOOD NO	TAG	POS	LENGTH	WIDTH	HEIGHT	TYPE	RISER(S)				
							WIDTH	LENG	DIA	CFM	SP
2	psp-fry	Front	126"	12"	6"	MUA	10"	28"		756	0.222'
						MUA	10"	28"		756	0.222'
3	hd2-grill	Front	108"	14"	6"	MUA	12"	24"		720	0.196'
						MUA	12"	24"		720	0.196'

SPECIFICATION: CAPTRATE® GREASE-STOP® SOLD FILTER

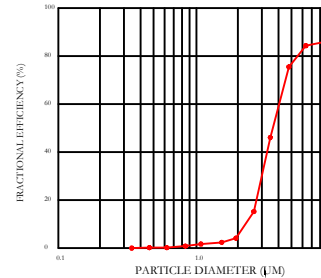
THE CAPTRATE GREASE-STOP SOLD FILTER IS A SINGLE-STAGE FILTER FEATURING A UNIQUE S-BAFFLE DESIGN IN CONJUNCTION WITH A SLOTTED REAR BAFFLE DESIGN, TO DELIVER EXCEPTIONAL FILTRATION EFFICIENCY.

FILTER IS STAINLESS STEEL CONSTRUCTION, AND SIZED TO FIT INTO STANDARD 2-INCH DEEP HOOD CHANNEL(S).

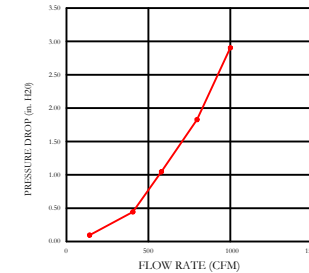
UNITS SHALL INCLUDE STAINLESS STEEL HANDLES AND A FASTENING DEVICE TO SECURE THE TWO COMPONENTS WHEN ASSEMBLED.

GREASE EXTRACTION EFFICIENCY PERFORMANCE SHALL REMOVE AT LEAST 75% OF GREASE PARTICLES FIVE MICRONS IN SIZE, AND 85% GREASE PARTICLES SEVEN MICRONS IN SIZE AND LARGER, WITH A CORRESPONDING PRESSURE DROP NOT TO EXCEED 1.0 INCHES OF WATER GAUGE. THE CAPTRATE GREASE-STOP SOLD WAS TESTED TO ASTM STANDARD ASTM F2519-05. MANUFACTURER APPROVED FOR USE IN SOLID FUEL APPLICATIONS AS A SPARK ARRESTER.

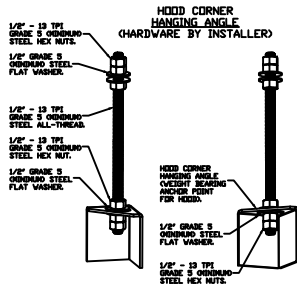
EFFICIENCY VS. PARTICLE DIAMETER



PRESSURE DROP VS. FLOW RATE



CAPTRATE FILTERS ARE BUILT IN COMPLIANCE WITH:
 NFPA #96.
 NSF STANDARD #2.
 UL STANDARD #1046.
 INT. MECH. CODE (IMC).
 ULC-S649.

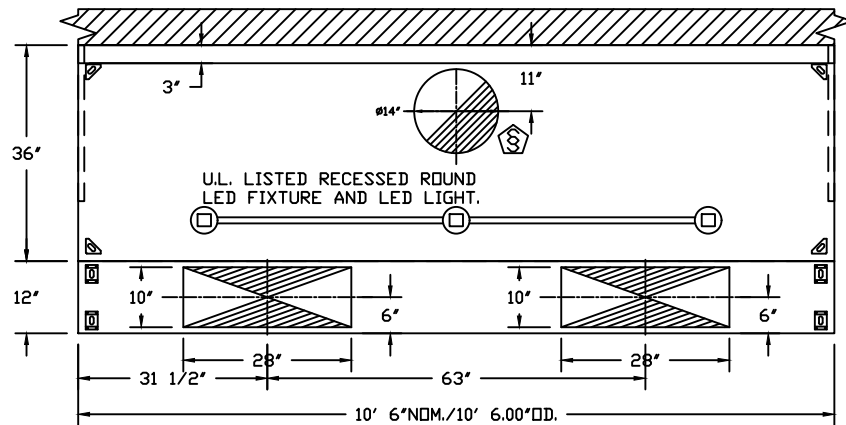


ASSEMBLY INSTRUCTIONS

HANGING ANGLE MUST BE SUPPORTED WITH 1/2" - 13 TPI GRADE 5 (MINIMUM) ALL-THREAD, SANDWICH HANGING ANGLES AND CEILING ANCHOR POINTS WITH 1/2" GRADE 5 (MINIMUM) STEEL FLAT WASHERS AND 1/2" - 13 TPI GRADE 5 (MINIMUM) HEX NUTS AS SHOWN. MUST USE DOUBLED HEX NUT CONFIGURATION BENEATH HOOD HANGING ANGLES AND ABOVE CEILING ANCHORS. MAINTAIN 1/4" OF EXPOSED THREADS BENEATH BOTTOM HEX NUT. TORQUE ALL HEX NUTS TO 57 FT-LBS.



JOB Buffalo Wild Wings R1 (Portsmouth NH)	
LOCATION PORTSMOUTH, NH, 03801	
DATE 11/28/2022	JOB # 5721549
DWG # 1	DRAWN BY jcirilli
REV.	SCALE 3/8" = 1'-0"

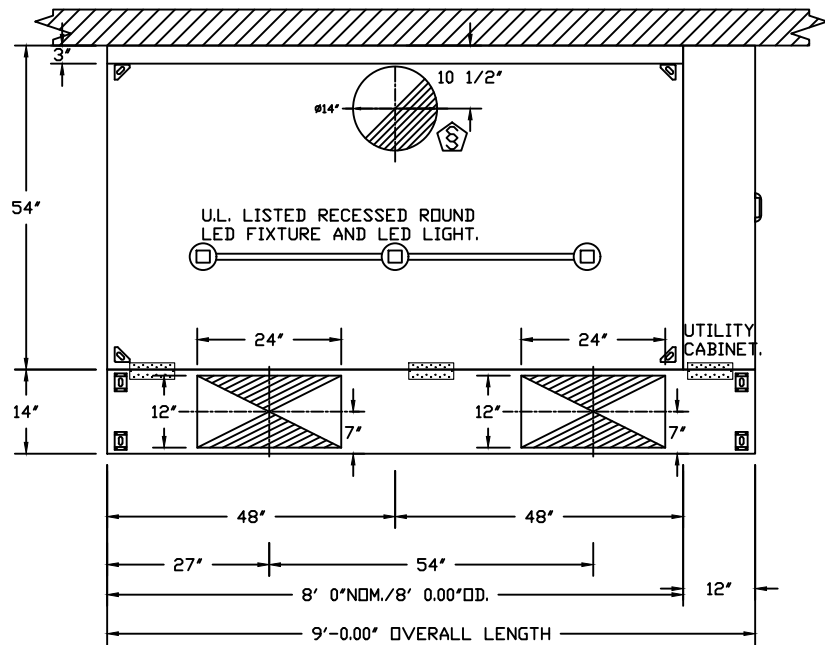


PLAN VIEW - HOOD #1 (hd1-fry)
 10' 6.00" LONG 3650BD-2



CAPTIVEAIRE

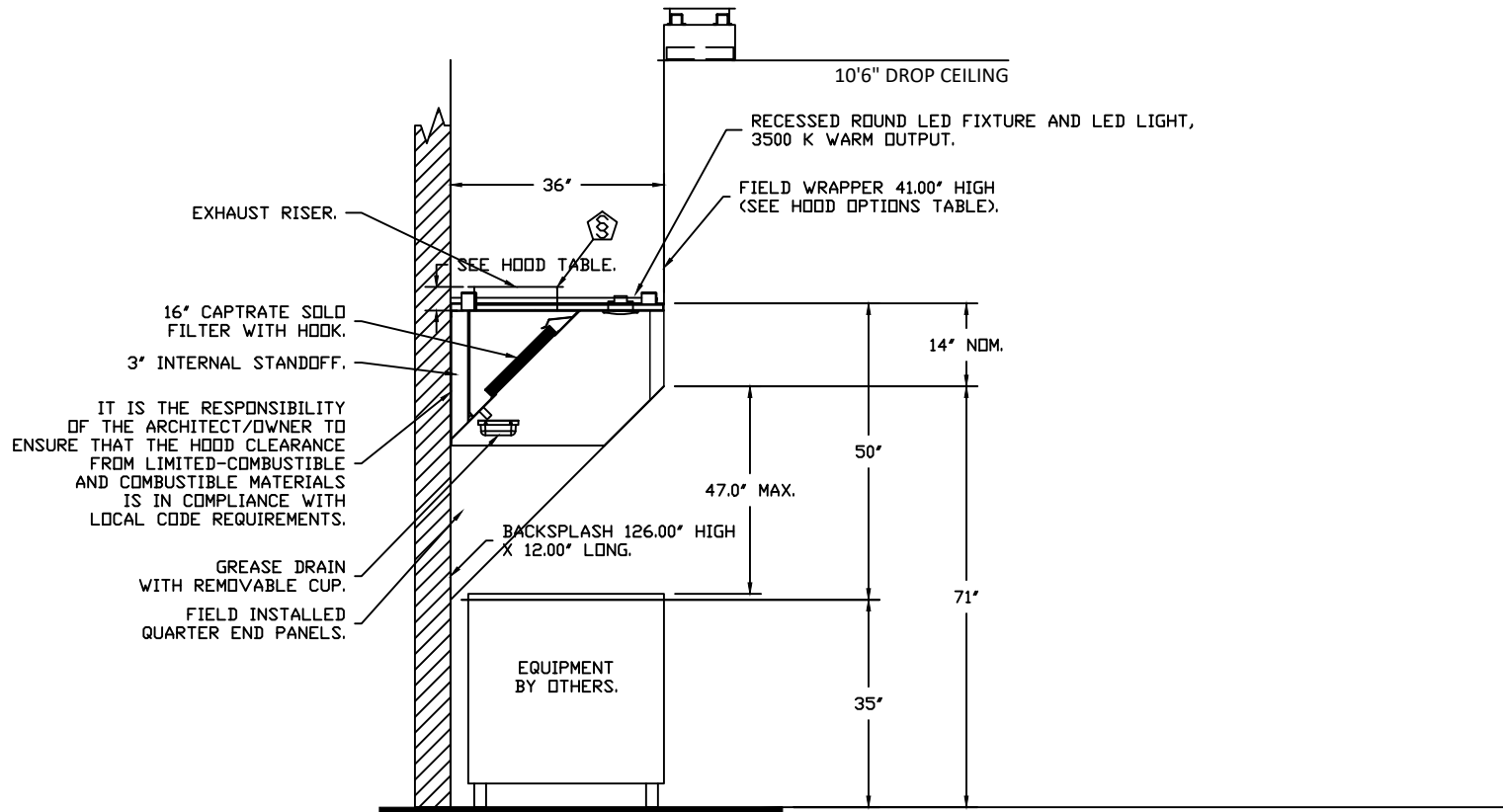
JOB Buffalo Wild Wings R1 (Portsmouth NH)	
LOCATION PORTSMOUTH, NH, 03801	
DATE 11/28/2022	JOB # 5721549
DWG # 2	DRAWN BY jcirilli
REV.	SCALE 3/8" = 1'-0"



PLAN VIEW - HOOD #3 (hd2-grill)
 8' 0.00" LONG 5424ND-2-PSP-F



JOB Buffalo Wild Wings R1 (Portsmouth NH)	
LOCATION PORTSMOUTH, NH, 03801	
DATE 11/28/2022	JOB # 5721549
DWG # 3	DRAWN BY jcirilli
REV.	SCALE 3/8" = 1'-0"



SECTION VIEW - MODEL 3650BD-2
HOOD - #1 (hd1-fry)



CAPTIVEAIRE

JOB Buffalo Wild Wings R1 (Portsmouth NH)	
LOCATION PORTSMOUTH, NH, 03801	
DATE 11/28/2022	JOB # 5721549
DWG # 4	DRAWN BY jcirilli
REV.	SCALE 3/8' = 1'-0'

EXHAUST FAN INFORMATION - JOB#5721549

FAN UNIT NO	TAG	QTY	FAN UNIT MODEL #	MANUFACTURER	CFM	ESP	RPM	MOTOR ENCL	HP	BHP	PHASE	VOLT	FLA	DISCHARGE VELOCITY	WEIGHT (LBS)	SDNES
1	KEF-1	1	USBI18DD-RM	CAPTIVEAIRE	1900	2.100	1277	DDP,PREMIUM	2.000	1.1230	3	208	8.3	974 FPM	432	19.3
2	KEF-2	1	USBI18DD-RM	CAPTIVEAIRE	1800	1.800	1187	DDP,PREMIUM	2.000	0.9060	3	208	6.1	923 FPM	412	16.7

FAN OPTIONS

FAN UNIT NO	TAG	QTY	DESCRIPTION
1	KEF-1	1	BI18 - INLET SERVICE DUCT CONNECTION. USED TO CONNECT TO STANDARD 20" GREASE DUCT OR FIELD WELDED DUCT. INCLUDES (2) 7' RISERS BOLTED TO STANDARD INLET RISER
		1	UTILITY SET GREASE CUP
		1	BI18 - 24" DISCHARGE EXTENSION
		1	BI - DISCHARGE ORIENTATION VERTICAL UPPER LEFT - CW INLET SIDE
		1	BI18 - INLET CONNECTION STANDARD 20" FLANGED GREASE DUCT
		1	UTILITY SET - SPRING VIBRATION ISOLATORS - BI18 / EQUIVALENT SIZED UTILITY SET - INDDOR/OUTDOOR USE
		1	UNIT MOUNTED VFD FOR USE WITH ECPM03
		1	2 YEAR PARTS WARRANTY
2	KEF-2	1	BI18 - INLET SERVICE DUCT CONNECTION. USED TO CONNECT TO STANDARD 20" GREASE DUCT OR FIELD WELDED DUCT. INCLUDES (2) 7' RISERS BOLTED TO STANDARD INLET RISER
		1	UTILITY SET GREASE CUP
		1	BI18 - 24" DISCHARGE EXTENSION
		1	BI - DISCHARGE ORIENTATION VERTICAL UPPER LEFT - CW INLET SIDE
		1	BI18 - INLET CONNECTION STANDARD 20" FLANGED GREASE DUCT
		1	UTILITY SET - SPRING VIBRATION ISOLATORS - BI18 / EQUIVALENT SIZED UTILITY SET - INDDOR/OUTDOOR USE
		1	UNIT MOUNTED VFD FOR USE WITH ECPM03
		1	2 YEAR PARTS WARRANTY
3	KSF-1	1	INLET PRESSURE GAUGE, 0-35"
		1	MANIFOLD PRESSURE GAUGE, -5 TO 15" WC
		1	LOW FIRE START
		1	MOTORIZED BACKDRAFT DAMPER FOR A2-D HOUSING - MEETS AMCA CLASS 1A RATING
		1	5 TON SINGLE CIRCUIT MODULAR PACKAGED COOLING OPTION FOR SIZE 2 DF/EH MUA (2,000 TO 3,000 CFM), 208V/230V, 3 PHASE. COOLING THERMOSTAT OR PROGRAMMABLE STAT REQUIRED FOR PROPER OPERATION
		1	SINGLE POINT MPU CONNECTION - 1 CONDENSER
		1	UNIT MOUNTED VFD FOR USE WITH ECPM03
		1	SIZE 2 DIRECT FIRED HEATER LOW CFM PROFILE PACKAGE - USED ON HEATERS UNDER 2500 CFM
1	2 YEAR PARTS WARRANTY		

FAN ACCESSORIES

FAN UNIT NO	TAG	EXHAUST			SUPPLY			
		GREASE CUP	GRAVITY DAMPER	WALL MOUNT	SIDE DISCHARGE	GRAVITY DAMPER	MOTORIZED DAMPER	WALL MOUNT
1	KEF-1	YES						
2	KEF-2	YES						
3	KSF-1				YES		YES	

CURB ASSEMBLIES

NO	ON FAN	TAG	WEIGHT	ITEM	SIZE
1	# 1	KEF-1	25 LBS	RAIL	4.000"W X 48.000"L X 14.500"H ALONG WIDTH, RIGHT COMES AS A SET OF 2.
2	# 2	KEF-2	25 LBS	RAIL	4.000"W X 48.000"L X 14.500"H ALONG WIDTH, RIGHT COMES AS A SET OF 2.
3	# 3	KSF-1	107 LBS	CURB	31.000"W X 79.000"L X 20.000"H ALONG WIDTH, RIGHT INSULATED.
	# 3			RAIL	6.000"W X 31.000"L X 20.000"H RIGHT.

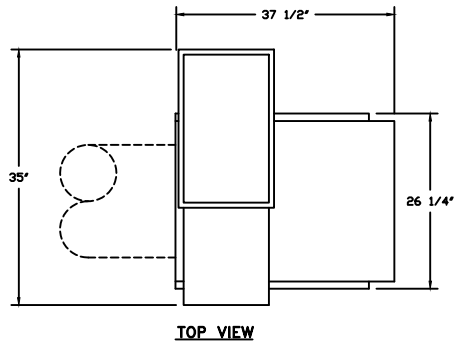
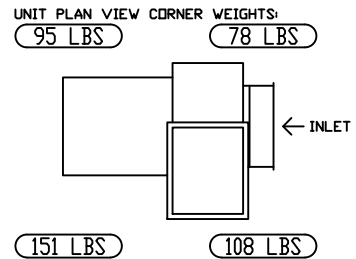


CAPTIVEAIRE

JOB Buffalo Wild Wings R1 (Portsmouth NH)	
LOCATION PORTSMOUTH, NH, 03801	
DATE 11/28/2022	JOB # 5721549
DWG # 6	DRAWN BY jcirilli
REV.	SCALE 3/8" = 1'-0"

FANS #1 (KEF-1), #2 (KEF-2) - USB118DD-RM EXHAUST FAN

CORNER WEIGHTS ARE CALCULATED BASED ON VERTICAL DISCHARGE. SUPPORT DUCT PROPERLY BEFORE FAN TO ENSURE CORNER WEIGHTS ARE NOT AFFECTED.

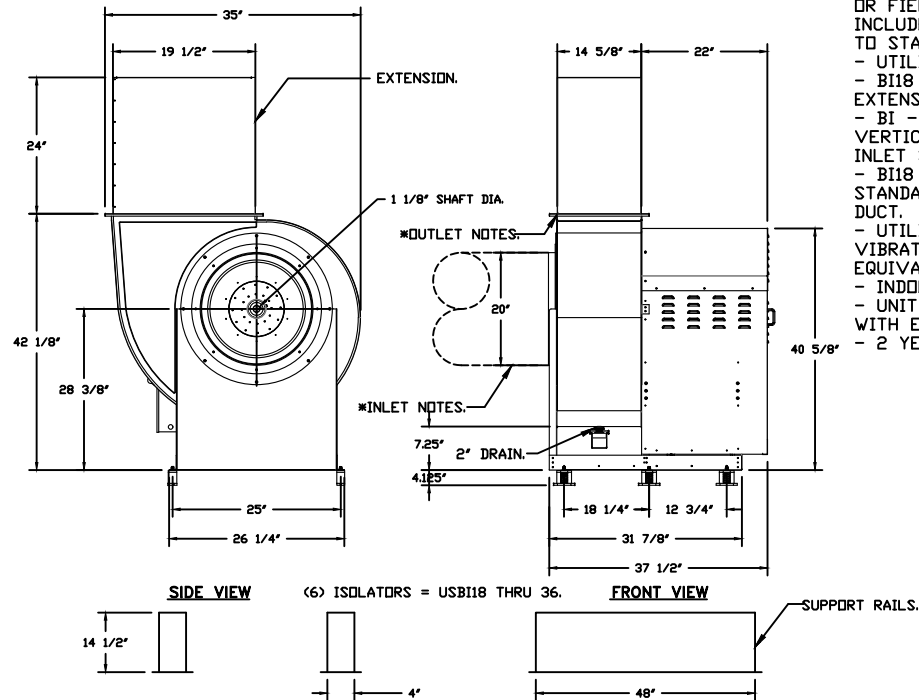


FEATURES:

- ROOF MOUNTED FANS.
- UL705.
- UL762 AND ULC-S645 (RESTAURANT MODEL).
- HIGH HEAT OPERATION DIRECT DRIVE 350°F (176°C).
- HEAT SLINGER.
- NEMA 3R SAFETY DISCONNECT SWITCH.
- GREASE CLASSIFICATION TESTING.
- 2" DRAIN.
- MOTOR WEATHER COVER.
- FULLY SEALED SCROLL HOUSING.
- SCROLL ACCESS DOOR.
- FLANGE 1 1/4".

OPTIONS

- BI18 - INLET SERVICE DUCT CONNECTION. USED TO CONNECT TO STANDARD 20" GREASE DUCT OR FIELD WELDED DUCT. INCLUDES (2) 7" RISERS BOLTED TO STANDARD INLET RISER.
- UTILITY SET GREASE CUP.
- BI18 - 24" DISCHARGE EXTENSION.
- BI - DISCHARGE ORIENTATION VERTICAL UPPER LEFT - CW INLET SIDE.
- BI18 - INLET CONNECTION STANDARD 20" FLANGED GREASE DUCT.
- UTILITY SET - SPRING VIBRATION ISOLATORS - BI18 / EQUIVALENT SIZED UTILITY SET
- INDOOR/OUTDOOR USE.
- UNIT MOUNTED VFD FOR USE WITH ECPM03.
- 2 YEAR PARTS WARRANTY.



* INLET/OUTLET NOTES:
LENGTH OF THE STRAIGHT DUCT ON THE INLET AND OUTLET TO BE 3 TIMES THE EQUIVALENT DUCT DIAMETER BEFORE CONNECTING TO ANY FITTINGS SUCH AS ELBOWS TO AVOID SYSTEM EFFECT.

NORMAL TEMPERATURE TEST DIRECT DRIVE EXHAUST FAN MUST OPERATE CONTINUOUSLY WHILE EXHAUSTING AIR AT 350°F (176°C) UNTIL ALL FAN PARTS HAVE REACHED THERMAL EQUILIBRIUM, AND WITHOUT ANY DETERIORATING EFFECTS TO THE FAN WHICH WOULD CAUSE UNSAFE OPERATION.



CAPTIVEAIR

JOB Buffalo Wild Wings R1 (Portsmouth NH)	
LOCATION PORTSMOUTH, NH, 03801	
DATE 11/28/2022	JOB # 5721549
DWG # 7	DRAWN BY jcirilli
REV.	SCALE 3/8" = 1'-0"

CONDENSER DETAILS

FAN UNIT NO	TAG	FAN UNIT MODEL #	CONDENSER NO	TONNAGE	VOLTAGE	PHASE	FREQUENCY	MCA	RLA	MAX FUSE SIZE	MIN WIRE SIZE	SEER
3	KSF-1	A2-D.500-20D-MPU	1	5	208-230	3 PHASE	60 HZ	21.4 AMPS	17.4 AMPS	30 AMPS	10 AWG	14

MUA FAN INFORMATION - JOB#5721549

FAN UNIT NO	TAG	QTY	FAN UNIT MODEL #	BLOWER	HOUSING	MIN CFM	DESIGN CFM	ESP	RPM	MOTOR ENCL	HP	BHP	PHASE	VOLT	FLA	MCA	MDCP	WEIGHT (LBS)	SONES
3	KSF-1	1	A2-D.500-20D-MPU	20MF-2-MDD	A2-D.500	2000	2960	0.500	1286	DDP, PREMIUM	2.000	1.1980	3	208	8.3	31.3A	45A	1240	10.7

COILS - JOB#5721549

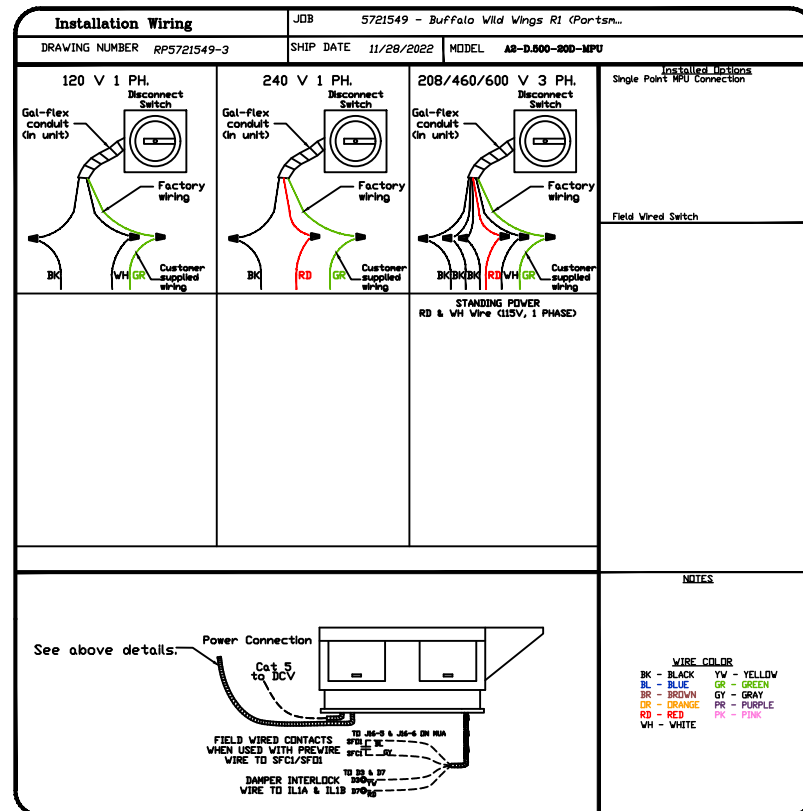
FAN UNIT NO	TAG	COIL TYPE	DESIGN CFM	COOLING										
				ENTERING DB TEMP	ENTERING WB TEMP	LEAVING DB TEMP	LEAVING WB TEMP	ENTERING FLUID TEMP	LEAVING FLUID TEMP	FLUID FLOW RATE	PERCENT GLYCOL	TOTAL CAPACITY	SENSIBLE CAPACITY	LATENT CAPACITY
3	KSF-1	DX	2960	86.0°F	71.0°F	75.5°F	66.4°F	---	---	---	---	48.1 MBH	32.9 MBH	15.2 MBH

HEATING

ENTERING DB TEMP	LEAVING DB TEMP	ENTERING FLUID TEMP	LEAVING FLUID TEMP	FLUID FLOW RATE	PERCENT GLYCOL	STEAM PRESSURE	TOTAL CAPACITY	SENSIBLE CAPACITY
---	---	---	---	---	---	---	---	---

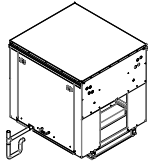
GAS FIRED MAKE-UP AIR UNIT(S)

FAN UNIT NO	TAG	INPUT BTUs	OUTPUT BTUs	TEMP RISE	REQUIRED INPUT GAS PRESSURE	GAS TYPE	BURNER EFFICIENCY(%)
3	KSF-1	229980	211582	67°F	7 IN. W.C. - 14 IN. W.C.	NATURAL	92

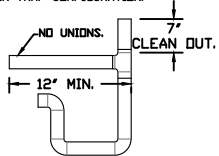


JOB Buffalo Wild Wings R1 (Portsmouth NH)	
LOCATION PORTSMOUTH, NH, 03801	
DATE 11/28/2022	JOB # 5721549
DWG # 8	DRAWN BY jcrilli
REV.	SCALE 3/8" = 1'-0"

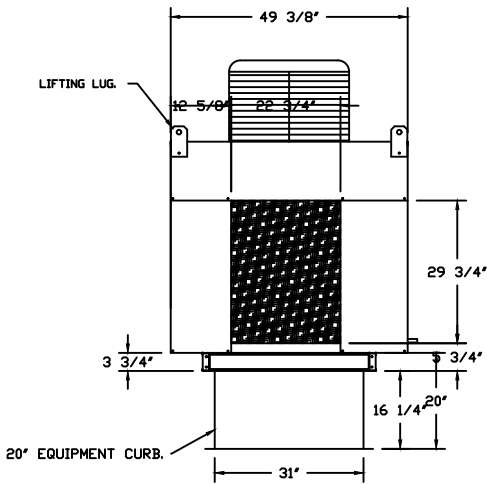
TYPICAL DRAIN TRAP INSTALL



RECOMMENDED COOLING COIL DRAIN TRAP CONFIGURATION

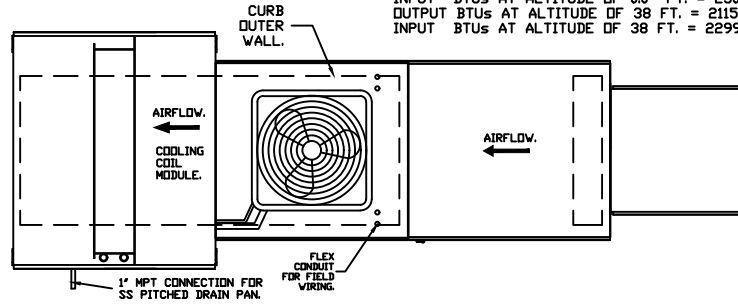


- NOTES:
 1) 1" DIAMETER PVC PIPE ONLY.
 2) USE ONLY LOW PROFILE COUPLINGS.
 3) ADD CLEAN OUT AS SHOWN.

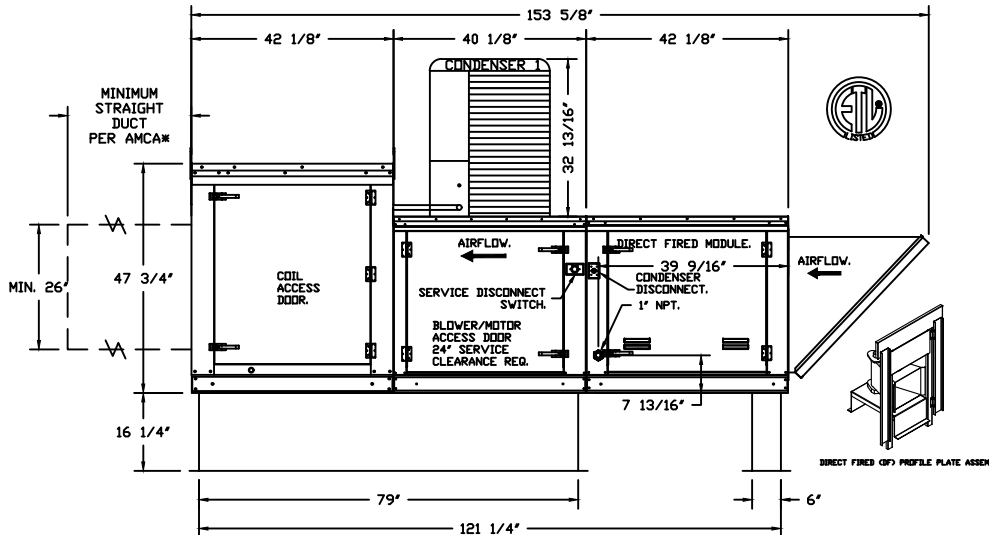


SUPPLY SIDE HEATER INFORMATION:

WINTER TEMPERATURE = 8°F. TEMP. RISE = 67°F.
 BTUS CALCULATED OFF ACTUAL AIR DENSITY.
 OUTPUT BTUS AT ALTITUDE OF 0.0 FT. = 211873.
 INPUT BTUS AT ALTITUDE OF 0.0 FT. = 230297.
 OUTPUT BTUS AT ALTITUDE OF 38 FT. = 211582.
 INPUT BTUS AT ALTITUDE OF 38 FT. = 229981.



- FAN #3 A2-D.500-20D-MPU - HEATER (KSF-1)
 1. DIRECT GAS FIRED HEATED MAKE UP AIR UNIT WITH 20' MIXED FLOW DIRECT DRIVE FAN.
 2. INTAKE HOOD WITH EZ FILTERS-LOW CFM.
 3. SIDE DISCHARGE - AIR FLOW RIGHT -> LEFT.
 4. GAS PRESSURE GAUGE, 0-35", 2.5" DIAMETER, 1/4" THREAD SIZE.
 5. GAS PRESSURE GAUGE, -5 TO +15 INCHES WC., 2.5" DIAMETER, 1/4" THREAD SIZE.
 6. LOW FIRE START, ALLOWS THE BURNER CIRCUIT TO ENERGIZE WHEN THE MODULATION CONTROL IS IN A LOW FIRE POSITION.
 7. MOTORIZED BACK DRAFT DAMPER 22.75" X 24" FOR SIZE 2 STANDARD & MODULAR HEATER UNITS W/EXTENDED SHAFT, STANDARD GALVANIZED CONSTRUCTION, 3/4" REAR FLANGE, LOW LEAKAGE, LF120S ACTUATOR INCLUDED.
 8. 5 TON, SINGLE CIRCUIT MODULAR PACKAGED COOLING OPTION FOR SIZE 2 DF/EH MODULAR PACKAGED UNIT. INCLUDES CONDENSER, DX COIL, FILTER/DRYER KIT, THERMAL EXPANSION VALVE, R410A REFRIGERANT, AND REFRIGERANT PIPING. (2,000 TO 3,000 CFM) WHEN ORDERED WITH OPPOSITE AIRFLOW CONDENSERS ACCESS AND COIL PIPING WILL REMAIN IN STANDARD POSITION. DRAIN AND SLEDS WILL MOVE TO THE OPPOSITE SIDE. ANY OTHER CHANGE WILL REQUIRE CLI. CONDENSERS REQUIRE SEPARATE 208V, 3 PHASE POWER SUPPLY UNLESS ORDERED WITH SINGLE POINT CONNECTION. COIL = 3E21001R.
 9. SINGLE POINT MPU CONNECTION, 1 CONDENSER.
 10. UNIT MOUNTED VFD FOR USE WITH ECPM03.
 11. PROFILE PLATE CONFIGURATION FOR SIZE 2 DIRECT FIRED UNIT FOR LOW CFM APPLICATIONS.
 12. HINGED DOUBLE WALL INSULATED DDDR ASSEMBLY (BURNER/BLOWER/MPU SECTION).
 13. 2 YEAR PARTS WARRANTY

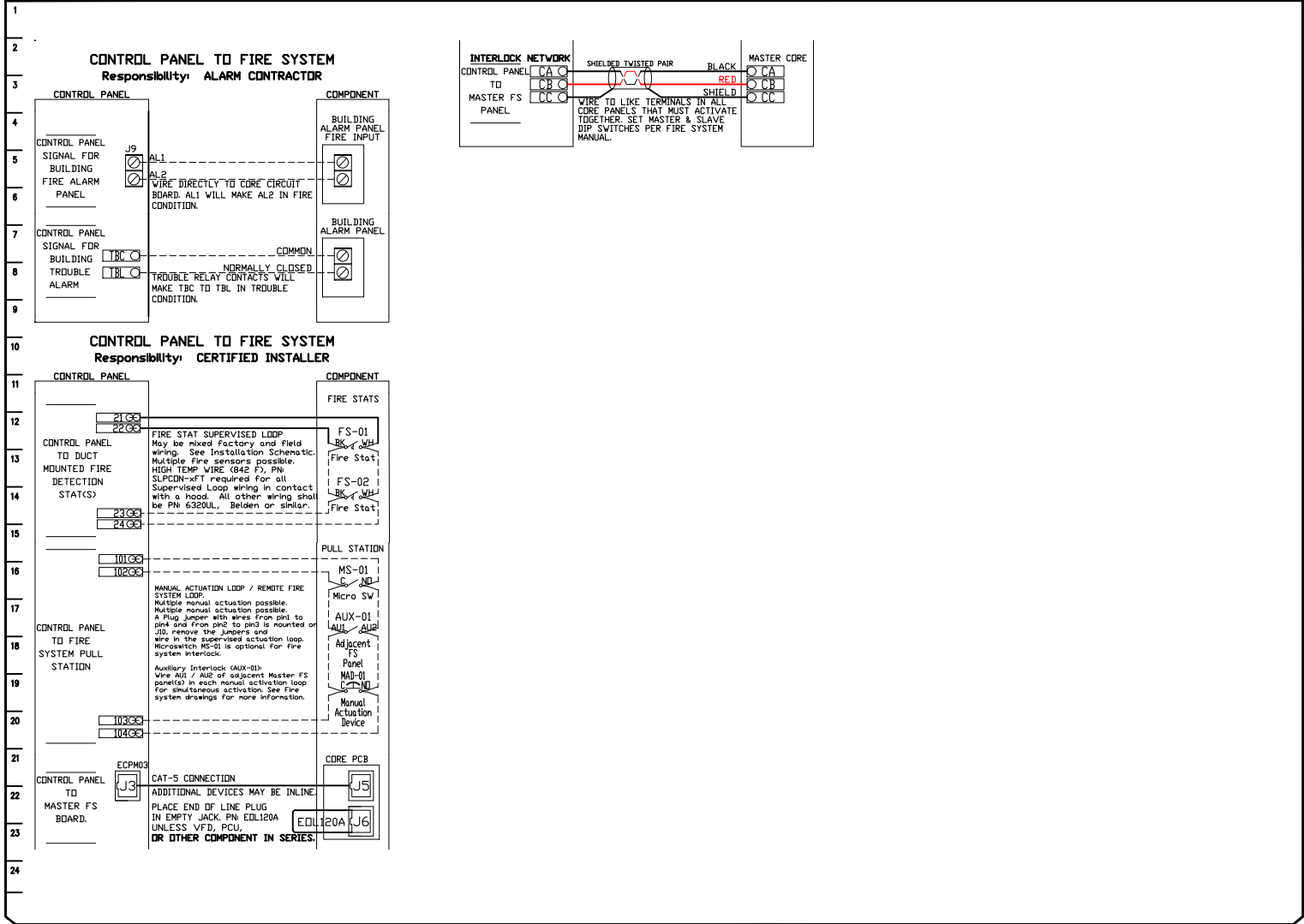


*NOTE: SUPPLY DUCT MUST BE INSTALLED TO MEET SMACNA STANDARDS. A MINIMUM STRAIGHT DUCT LENGTH MUST BE MAINTAINED DOWNSTREAM OF UNIT DISCHARGE AS OUTLINED IN AMCA PUBLICATION 201. WHEN USING RECTANGULAR DUCTWORK, ELBOWS MUST BE RADIUS THROAT, RADIUS BACK WITH TURNING VANES. FLEXIBLE DUCTWORK AND SQUARE THROAT/SQUARE BACK ELBOWS SHOULD NOT BE USED. ANY TRANSITION AND/OR TURNS IN THE DUCTWORK WILL CAUSE SYSTEM EFFECT. SYSTEM EFFECT WILL DRASTICALLY INCREASE STATIC PRESSURE AND REDUCE AIRFLOW. DO NOT RELY ON UNIT TO SUPPORT DUCT IN ANY WAY. FAILURE TO PROPERLY SIZE DUCTWORK MAY CAUSE SYSTEM EFFECTS AND REDUCE PERFORMANCE OF THE EQUIPMENT. SUGGESTED STRAIGHT DUCT SIZE IS 26" x 26".



JOB Buffalo Wild Wings R1 (Portsmouth NH)	
LOCATION PORTSMOUTH, NH, 03801	
DATE 11/28/2022	JOB # 5721549
DWG # 9	DRAWN BY jcirilli
REV.	SCALE 3/8" = 1'-0"

JOB NO 5721549	MODEL NUMBER DCV-2111	DRAWN BY INSTALL	SCHEMATIC TYPE INSTALL	DESCRIPTION OF OPERATION Demand Control Ventilation, w/ control for 2 Exhaust Fans, 1 Supply Fan, Exhaust on in Fire, Lights out in Fire, Fans modulate based on duct temperature. INVERTER DUTY 3 PHASE MOTOR REQUIRED FOR USE WITH VFD. Room temperature sensor shipped loose for field installation. Verify distance between VFD and Notary; additional cost could apply if distance exceeds 50 feet.
JOB NAME Buffalo Wild Wings R1 (Portsm...	DATE 11/28/2022	DWG NO ECP #1-2		



JOB Buffalo Wild Wings R1 (Portsmouth NH)	
LOCATION PORTSMOUTH, NH, 03801	
DATE 11/28/2022	JOB # 5721549
DWG # 11	DRAWN BY jcirilli
REV.	SCALE 3/8" = 1'-0"

JOB NO 5721549	MODEL NUMBER DCV-2111	DRAWN BY JCR	SCHEMATIC TYPE INSTALL	DESCRIPTION OF OPERATION: Fire System #1 TANK FS - 48/40/40 (TANKS). Tank-based Fire Protection System equipped with Electronic Detection utilizing CDRS board as a Listed Release Mechanism. Installed in Hood Utility Cabinet with integral hood pressure panel.
JOB NAME Buffalo Wild Wings R1 (Portsm...	DATE 11/28/2022	DWG NO ECP #1-3		

TANK PROTECTION ELECTRICAL DETAIL

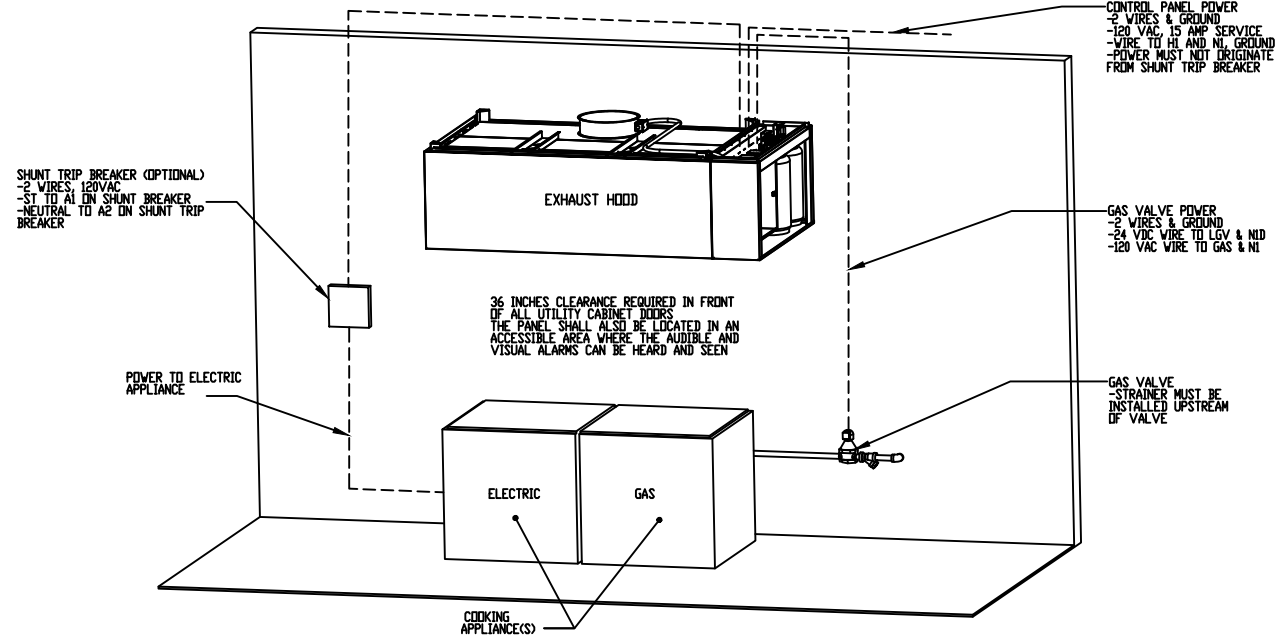
02/10/2021 Rev. 2

- ELECTRICIAN:**
1. WIRE MAIN CONTROL PANEL PER INCLUDED SCHEMATIC
 2. WIRE ALL FANS PER INCLUDED SCHEMATIC
 3. WIRE SHUNT TRIP BREAKER (OPTIONAL)
 4. WIRE UDS APPLIANCE KILL SWITCH, IF EQUIPPED (OPTIONAL)
 5. WIRE GAS VALVE

FS-1: MASTER

ELECTRICAL CONTRACTOR REQUIREMENT

ITEM	CONNECTION IN PANEL	CONNECTION IN DEVICE	VOLTAGE	AMPERAGE	COMMENTS
SHUNT TRIP BREAKER (OPTIONAL)	ST & NI	BREAKER COIL (A1 & A2)	120 VAC	< 4 AMPS	ST TO A1 ON SHUNT BREAKER COIL, AND NEUTRAL TO A2 ON SHUNT TRIP BREAKER COIL
CONTROL PANEL POWER	HI & NI + GROUND	CIRCUIT BREAKER	120 VAC	15 AMPS	CONTROL PANEL POWER MUST NOT BE RUN THROUGH SHUNT TRIP BREAKER
UDS APPLIANCE KILL SWITCH (OPTIONAL)	KTS & NI	KTS & NI	120 VAC	< 4 AMPS	KILL SWITCH TERMINALS MUST BE IN SERIES WITH OTHER KILL SWITCHES
REMOTE 120VAC ANSUL AUTOMAN (OPTIONAL)	AU1, AU2	SOLENOID	120 VAC	< 6 AMPS	120V TO AU1, AU2 TO ANSUL ELECTRIC AUTOMAN, ANSUL SOLENOID TO NEUTRAL
GAS VALVE	LGV & NID (IF 24 VDC) GAS & NI (IF 120 VAC)	RED/RED/GREEN	24 VDC OR 120 VAC	< 1.0 AMPS	IF 24 VDC - 2 WIRES & GROUND, NID TO RED, LGV TO RED, AND GREEN TO GROUND IF 120 VAC - 2 WIRES & GROUND GAS TO RED, NI TO RED, AND GREEN TO GROUND



NOTE: SEE INSTALLATION, OPERATION, AND MAINTENANCE MANUAL FOR FURTHER INSTRUCTIONS



CAPTIVEAIR

JOB Buffalo Wild Wings R1 (Portsmouth NH)	
LOCATION PORTSMOUTH, NH, 03801	
DATE 11/28/2022	JOB # 5721549
DWG # 12	DRAWN BY jcirilli
REV.	SCALE 3/8" = 1'-0"

JOB NO 5721549	MODEL NUMBER DCV-2111	DRAWN BY	SCHEMATIC TYPE INSTALL	DESCRIPTION OF OPERATION: Fire System #1 Tank FS - 48/48/40 (TANKS) Tank-based Fire Protection System equipped with Electronic Detection utilizing CORE board as a Listed Release Mechanism. Installed in Hood Utility Cabinet with integral hood pressure panel.
	JOB NAME Buffalo Wild Wings R1 (Portsm...	DATE 11/28/2022	DWG NO ECP #1-4	

TANK PROTECTION LOW-VOLTAGE DETAIL

02/10/2021 Rev. 2

ALARM CONTRACTOR:
1. WIRE MANUAL ACTUATION DEVICE(S), REMOTE FIRESTAT(S), CORE INTERLOCK(S), FIRE SENSOR(S) AND FIRE ALARM CONTACTS
2. COMPLETE FINAL HOOKUP OF SYSTEM
3. VERIFY FINAL FIRE SYSTEM TEST

FS-1: MASTER

ALARM CONTRACTOR REQUIREMENT					
ITEM	CONNECTION IN PANEL	CONNECTION ON DEVICE	VOLTAGE	AMPERAGE	COMMENTS
MANUAL ACTUATION DEVICE(S)	101 AND 104 102 AND 103	1 & 2	24 VDC	< 1.0 AMPS	WIRE MANUAL ACTUATION DEVICE TERMINAL 1 BETWEEN CORE PANEL TERMINALS 102 AND 103 WIRE MANUAL ACTUATION DEVICE TERMINAL 2 BETWEEN CORE PANEL TERMINALS 101 AND 104 JUMPER 101 TO 104 AND 102 TO 103 IF NO MANUAL ACTUATION DEVICE IS INSTALLED
MANUAL ACTUATION DEVICE COVER	N/A	N/A	N/A	N/A	MANUAL ACTUATION DEVICE COVER MUST BE INSTALLED IF SURFACE MOUNTED, USE COVER EXTENSION ST1-6531B
REMOTE FIRESTAT SENSOR(S)	21 AND 24 22 AND 23	BLACK AND WHITE	24 VDC	< 1.0 AMPS	WIRE FIRE SENSOR WHITE WIRES BETWEEN HOOD CORE PANEL TERMINALS 22 AND 23 WIRE FIRE SENSOR BLACK WIRE BETWEEN HOOD CORE PANEL TERMINALS 21 AND 24 HIGH TEMP (842°F) #CW04427 (WHT) & #CW04427B (BLK) WIRE OR SIMILAR ONLY IF RAN OVER TOP OF HOOD; OTHERWISE BELDEN #6320UL OR SIMILAR PLENUM RATED WIRE; SEE FIGURE 1
FIRE ALARM CONTACT	AL1, AL2	VARIES	50V MAX (AC/DC)	UP TO 1 AMP	FIRE ALARM RELAY CONTACTS FOR BUILDING FIRE ALARM LOCATED IN THE CORE ELECTRICAL CONTROL PANEL
CORE INTERLOCK(S)	ILA, ILB, ILC	ILA, ILB, ILC	RS-485 COMMUNICATIONS SIGNAL		CORE SYSTEM (1) ILA, TO CORE SYSTEM (2) ILA, CORE SYSTEM (1) ILB, TO CORE SYSTEM (2) ILB, CORE SYSTEM (1) ILC, TO CORE SYSTEM (2) ILC. USE BELDEN# 88760 OR SIMILAR WIRE
TROUBLE CONTACT	TBC, TBL, TDK	VARIES	MAX 120 VAC	UP TO 6 AMPS	WIRE TO TBL & TBC NORMALLY OPEN CONTACT, CLOSES IN TROUBLE CONDITION
CORE COMMUNICATIONS CABLE	RJ-45 Jack	INTERNET CONNECTION	SIGNAL	<1.0 AMPS	TYPICAL CONNECTION CAT5 CABLE TO LOCAL AREA NETWORK VIA ETHERNET SWITCH OR WIRELESS ROUTER WITH VALID INTERNET CONNECTION

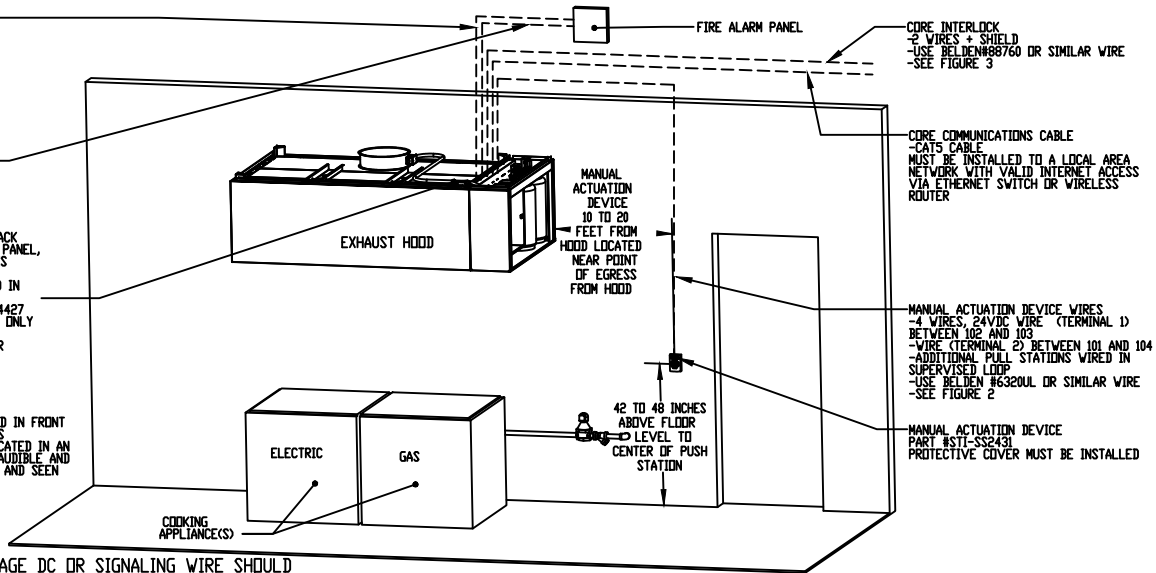
FIRE ALARM CONTACT
-2 WIRES WIRE TO NORMALLY
OPEN CONTACTS (CLOSES IN
FIRE CONDITION)
-CORE CONTROL PANEL AL1
AND AL2
-SEE FIGURE 2

TROUBLE CONTACT
-2 WIRES TO NORMALLY
OPEN CONTACTS (CLOSE
IN TROUBLE CONDITION)
-CORE PANEL TERMINALS
TBL AND TBC
-SEE FIGURE 4

SUPERVISED LOOP
-4 WIRES, 24VDC CONNECT BLACK
WIRES BETWEEN 21 AND 24 IN PANEL,
CONNECT WHITE (OR RED) WIRES
BETWEEN 22 AND 23 IN PANEL
-ADDITIONAL FIRESTATS, WIRE IN
SUPERVISED LOOP
-USE HIGH TEMP (842°F) #CW04427
(WHT) & #CW04427B (BLK) WIRE ONLY
IF RAN OVER TOP OF HOOD
-OTHERWISE BELDEN #6320UL OR
SIMILAR PLENUM RATED WIRE
-SEE FIGURE 1

36 INCHES CLEARANCE REQUIRED IN FRONT
OF ALL UTILITY CABINET DOORS
THE PANEL SHALL ALSO BE LOCATED IN AN
ACCESSIBLE AREA WHERE THE AUDIBLE AND
VISUAL ALARMS CAN BE HEARD AND SEEN

ATTENTION: LOW-VOLTAGE DC OR SIGNALING WIRE SHOULD
BE ROUTED IN SEPARATE CONDUIT FROM ALL AC SOURCES
NOTE: SEE INSTALLATION, OPERATION, AND MAINTENANCE MANUAL FOR FURTHER INSTRUCTIONS



FIRE ALARM PANEL
CORE INTERLOCK
-2 WIRES + SHIELD
-USE BELDEN#88760 OR SIMILAR WIRE
-SEE FIGURE 3

CORE COMMUNICATIONS CABLE
-CAT5 CABLE
MUST BE INSTALLED TO A LOCAL AREA
NETWORK WITH VALID INTERNET ACCESS
VIA ETHERNET SWITCH OR WIRELESS
ROUTER

MANUAL ACTUATION DEVICE WIRES
-4 WIRES, 24VDC WIRE (TERMINAL 1)
BETWEEN 102 AND 103
-WIRE (TERMINAL 2) BETWEEN 101 AND 104
-ADDITIONAL PULL STATIONS WIRE IN
SUPERVISED LOOP
-USE BELDEN #6320UL OR SIMILAR WIRE
-SEE FIGURE 2

MANUAL ACTUATION DEVICE
PART #ST1-SS243
PROTECTIVE COVER MUST BE INSTALLED



CAPTIVEAIRE

JOB Buffalo Wild Wings R1 (Portsmouth NH)	
LOCATION PORTSMOUTH, NH, 03801	
DATE 11/28/2022	JOB # 5721549
DWG # 13	DRAWN BY jcrilli
REV.	SCALE 3/8" = 1'-0"