

ABBREVIATIONS

AFF	ABOVE FINISHED FLOOR
AHU	AIR HANDLING UNIT
BOD	BOTTOM OF DUCT
CU	CONDENSING UNIT
COMP.	COMPRESSOR
CONN.	CONNECTION
CFM	CUBIC FEET PER MINUTE
DIA.	DIAMETER
DB	DRY BULB
DN.	DOWN
E	EXISTING
EF	EXHAUST FAN
EFF.	EFFICIENCY
ENT.	ENTERING
EBH	ELECTRIC BASEBOARD HEATER
E.A.T.	ENTERING AIR TEMPERATURE
EUH	ELECTRIC UNIT HEATER
E.W.T.	ENTERING WATER TEMPERATURE
FSD	FIRE SMOKE DAMPER
FT.	FEET
GPM	GALLONS PER MINUTE
H.P.	HORSEPOWER
IN.	INCH
L.V.G.	LEAVING
L.A.T.	LEAVING AIR TEMPERATURE
MAU	MAKE-UP AIR UNIT
MAX.	MAXIMUM
MIN.	MINIMUM
MOT	MOTORIZED
MSS	MINI SPLIT SYSTEM
NC	NOISE CRITERION
NOM.	NOMINAL
NO.	NUMBER
OSA	OUTSIDE AIR
OPER.	OPERATING
Δ P	PRESSURE DIFFERENTIAL
P.D.	PRESSURE DROP
P.R.V.	PRESSURE REDUCING VALVE
RA(R)	RETURN AIR REGISTER
REQ'D	REQUIRED
RPM	REVOLUTIONS PER MINUTE
RTU	ROOFTOP UNIT
S.P.	STATIC PRESSURE
SAD	SUPPLY AIR DIFFUSER
SA(R)	SUPPLY AIR (REGISTER)
TEMP.	TEMPERATURE
T'STAT	THERMOSTAT
TOD	TOP OF DUCT
(TYP)	TYPICAL
VEL.	VELOCITY
VOL.	VOLUME
WB	WET BULB
VAV	VARIABLE AIR VOLUME

GENERAL NOTES

1. PROVIDE BALANCING DAMPERS AT POINTS ON SUPPLY, RETURN, AND EXHAUST SYSTEMS WHERE BRANCHES LEAD FROM LARGE DUCTS AS REQUIRED FOR AIR BALANCING. INSTALL AT A MINIMUM OF TWO DUCT WIDTHS FROM BRANCH TAKEOFF.
2. SEE AIR DISTRIBUTION SCHEDULE FOR DUCT RUNOUT SIZES TO SUPPLY DEVICES.

SHEET KEYNOTES

1. INSTALL LW-50 VENT KIT PROVIDED BY HOBART. VENT KIT AUTOMATICALLY REMOVES STEAM/CONDENSATE AT THE COMPLETION OF THE WASH CYCLE. CONTRACTOR TO CONNECT A 10" DUCT TO THE VENT KIT OPENING AND RUN THROUGH ROOF TERMINATING DUCT WITH AN ELBOW. SEE HSD-8/M5.1.
2. PROVIDE AND INSTALL HVAC REFRIGERATION PIPING PER MANUFACTURER'S RECOMMENDATIONS.
3. 4' LONG EXHAUST GRILLE IN CEILING. GRILLE SHALL BE EQUAL TO: TITUS 350 RL, 50F, OR CT SERIES. NO STAMPED GRILLES OR GRILLES WIDER THAN 10". PROVIDE PLENUM ABOVE GRILLES. 300 CFM AIRFLOW. CONNECT TOP OF 10x8 DUCT TO 10x8 PLENUM.

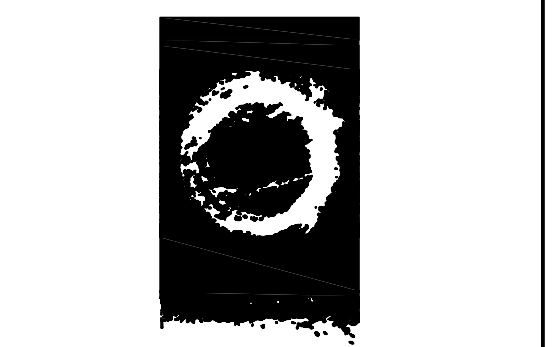


**KROGER
SW-522**
WITHIN THE WALLS
REMODEL
7100 INDEPENDENCE PKWY
PLANO, TX 75025
A DEVELOPMENT OF
KROGER

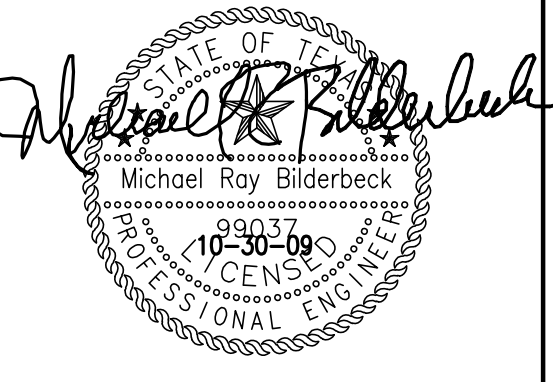


ISSUE LOG

NO.	DESCRIPTION	DATE
AS BUILT		06/16/10



O'BRIEN
5310 HARVEST HILL RD.
SUITE 136
DALLAS, TEXAS 75230
972.788.1010
www.obrienarch.com



MIKE BILDERBECK, PE
REGISTRATION NO. 99037
Pickering Firm, Inc.
F-6844

DATE:	JOB:	SCALE:
05/08/09	29007	3/32"=1'-0"

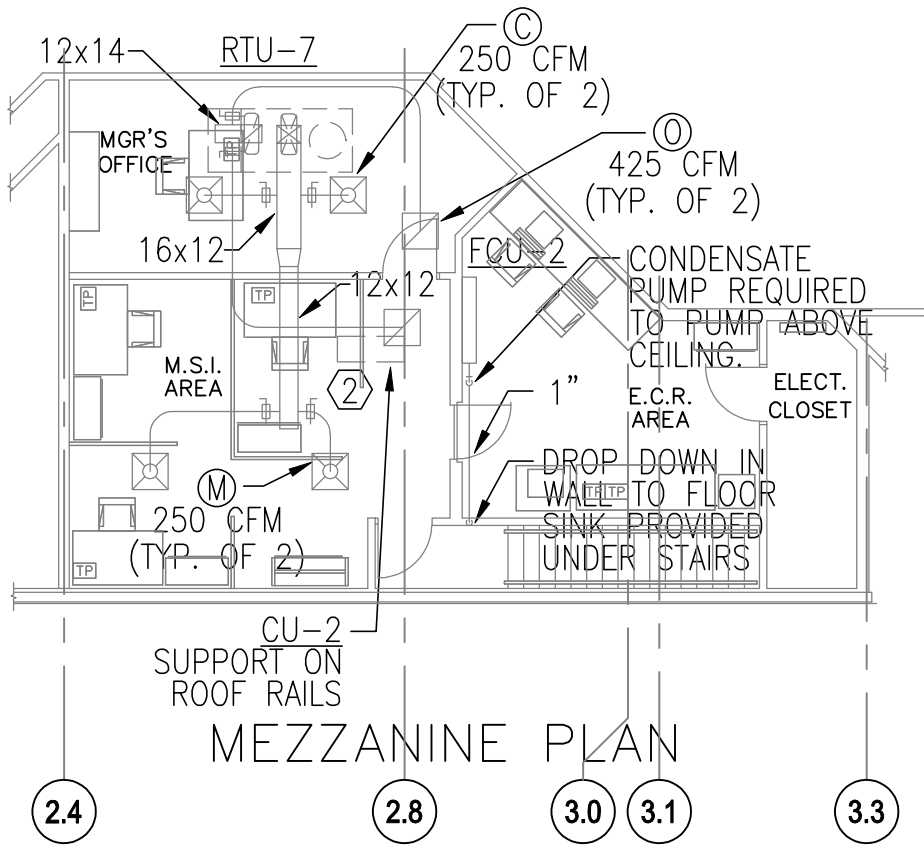
SHEET NO.

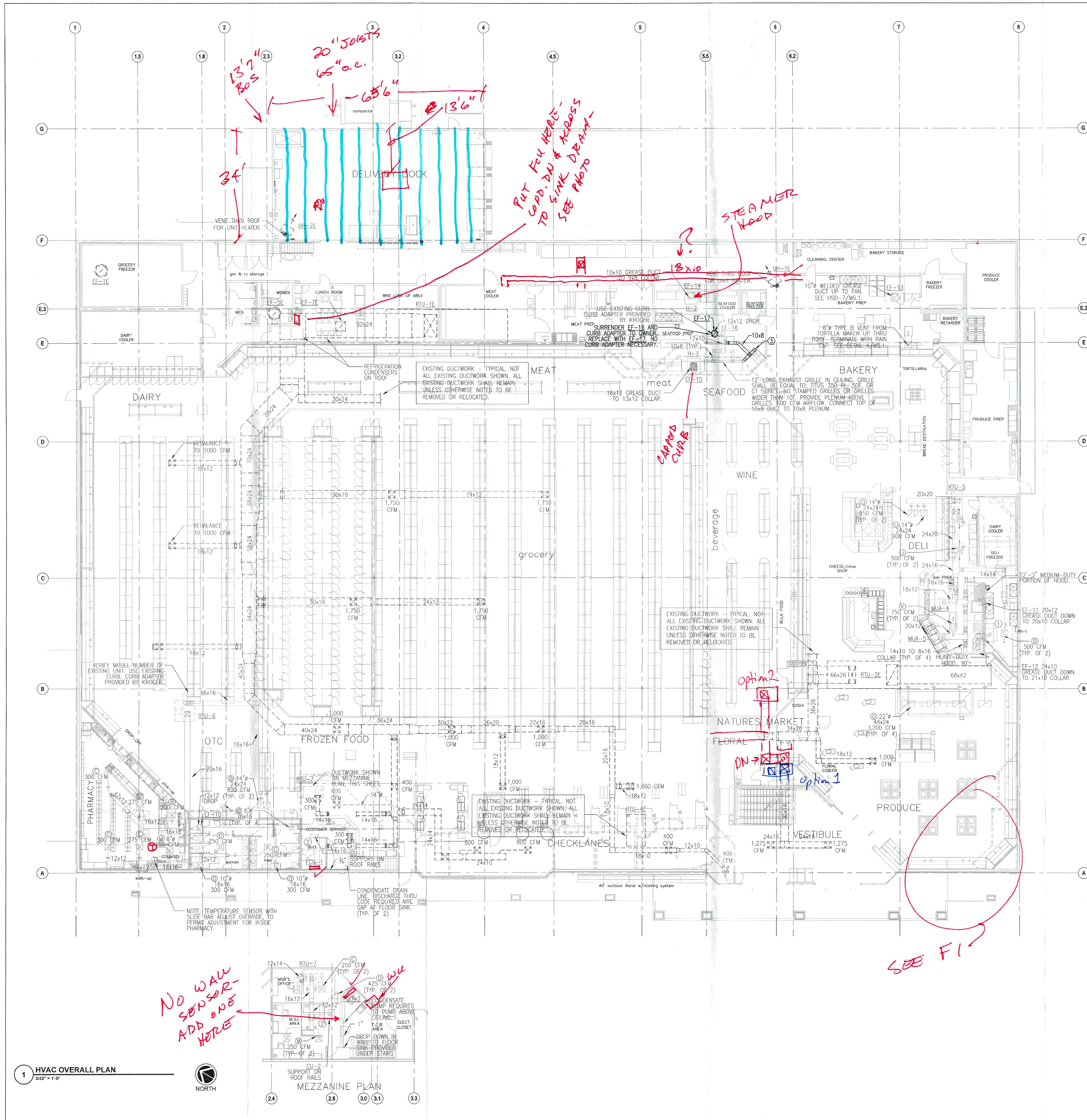
M1.1

HVAC OVERALL FLOOR PLAN

COPYRIGHT © 2009 PICKERING FIRM, INC. THESE DRAWINGS OR PARTS THEREOF MAY NOT BE REPRODUCED IN ANY FORM OR BY ANY METHOD FOR ANY PURPOSE WITHOUT PRIOR WRITTEN CONSENT FROM PICKERING FIRM, INC.

1 HVAC OVERALL PLAN
3/32" = 1'-0"





ABBREVIATIONS

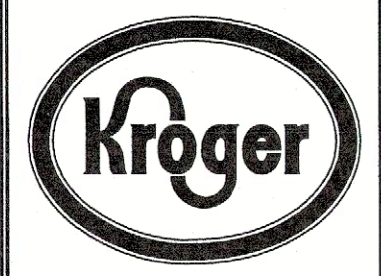
AFF	ABOVE FINISHED FLOOR
AHU	AIR HANDLING UNIT
BOD	BOTTOM OF DUCT
CU	CONDENSING UNIT
COMP.	COMPRESSOR
CONN.	CONNECTION
CFM	CUBIC FEET PER MINUTE
DIA.	DIAMETER
DB	DRY BULB
DN.	DOWN
E	EXISTING
EF	EXHAUST FAN
EFF.	EFFICIENCY
ENT.	ENTERING
EBH	ELECTRIC BASEBOARD HEATER
E.A.T.	ENTERING AIR TEMPERATURE
E.U.H.	ELECTRIC UNIT HEATER
E.W.T.	ENTERING WATER TEMPERATURE
FSD	FIRE SMOKE DAMPER
FT	FEET
GPM	GALLONS PER MINUTE
H.P.	HORSEPOWER
IN.	INCH
L.V.C.	LEAVING
L.A.T.	LEAVING AIR TEMPERATURE
MAU	MAKE-UP AIR UNIT
MAX.	MAXIMUM
MIN.	MINIMUM
MOT	MOTORIZED
MSS	MINI SPLIT SYSTEM
NC	NOISE CRITERION
NOM.	NOMINAL
NO.	NUMBER
OSA	OUTSIDE AIR
OPER.	OPERATING
Δ P	PRESSURE DIFFERENTIAL
P.D.	PRESSURE DROP
P.R.V.	PRESSURE REDUCING VALVE
RA(R)	RETURN AIR REGISTER
REQ'D	REQUIRED
RPM	REVOLUTIONS PER MINUTE
RTU	ROOFTOP UNIT
S.P.	STATIC PRESSURE
SAD	SUPPLY AIR DIFFUSER
SA(R)	SUPPLY AIR (REGISTER)
TEMP.	TEMPERATURE
T'STAT	THERMOSTAT
TOO	TOP OF DUCT
(TYP)	TYPICAL
VEL.	VELOCITY
VOL.	VOLUME
WB	WET BULB
VAV	VARIABLE AIR VOLUME

GENERAL NOTES

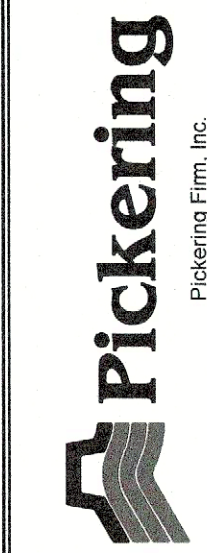
1. PROVIDE BALANCING DAMPERS AT POINTS ON SUPPLY, RETURN, AND EXHAUST SYSTEMS WHERE BRANCHES LEAD FROM LARGE DUCTS AS REQUIRED FOR AIR BALANCING. INSTALL AT A MINIMUM OF TWO DUCT WIDTHS FROM BRANCH TAKEOFF.
2. SEE AIR DISTRIBUTION SCHEDULE FOR DUCT RUNOUT SIZES TO SUPPLY DEVICES.

SHEET KEYNOTES

1. INSTALL LW-50 VENT KIT PROVIDED BY HOBART. VENT KIT AUTOMATICALLY REMOVES STEAM/CONDENSATE AT THE COMPLETION OF THE WASH CYCLE. CONTRACTOR TO CONNECT A 10" DUCT TO THE VENT KIT OPENING AND RUN THROUGH ROOF TERMINATING DUCT WITH AN ELBOW. SEE HSD-8/MS-1.
2. PROVIDE AND INSTALL HVAC REFRIGERATION PIPING PER MANUFACTURER'S RECOMMENDATIONS.
3. 4' LONG EXHAUST GRILLE IN CEILING. GRILLE SHALL BE EQUAL TO: TITUS 350 RL, 50F, OR CT SERIES. NO STAMPED GRILLES OR GRILLES WIDER THAN 10". PROVIDE PLENUM ABOVE GRILLES. 300 CFM AIRFLOW. CONNECT TOP OF 10x8 DUCT TO 10x8 PLENUM.

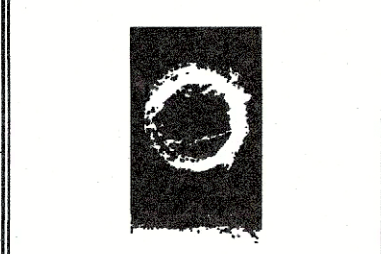


KROGER
SW-522
WITHIN THE WALLS
REMODEL
7100 INDEPENDENCE PKWY
PLANO, TX 75025
A DEVELOPMENT OF:
KROGER



ISSUE LOG

NO.	DESCRIPTION	DATE
AS BUILT		06/16/10



O'BRIEN
5310 HARVEST HILL RD.
SUITE 130
DALLAS, TEXAS 75230
972.788.1010
www.obrienarch.com



MIKE BILDERBECK, PE
REGISTRATION NO. 99037
Pickering Firm, Inc.
F-6844

DATE:	JOB:	SCALE:
05/08/09	29007	3/32"=1'-0"

SHEET NO.

M1.1

HVAC OVERALL FLOOR PLAN

522
MECH