











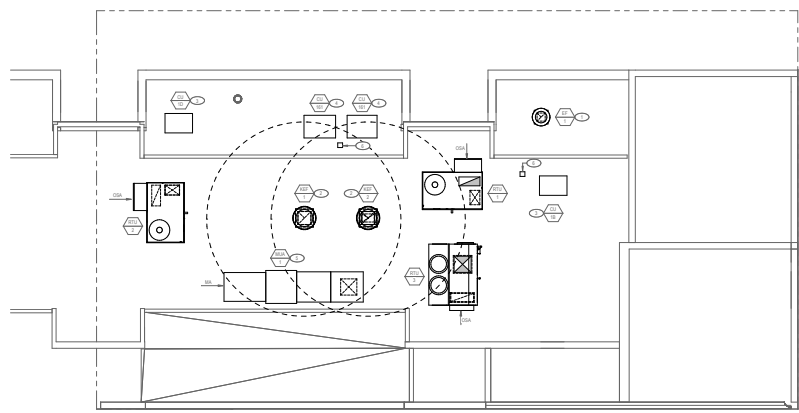
**RENOVATION KEY NOTES**

1. REVISIONS LISTED FOR MECHANICAL REMODEL SHALL BE COMPLETED BY THE CONTRACTOR AND INSTALLED BY MECHANICAL CONTRACTOR AND SHALL BE IN ACCORDANCE WITH THE MECHANICAL CONTRACTOR'S REVISIONS LIST FOR THE MECHANICAL REMODEL.
2. COOLERS/CONDENSING UNITS TO BE PROVIDED BY OWNER. INSTALL FOR MECHANICAL CONTRACTOR TO COMPLY WITH THE MECHANICAL CONTRACTOR'S REVISIONS LIST FOR THE MECHANICAL REMODEL.
3. COOLERS/CONDENSING UNITS TO BE PROVIDED BY OWNER. INSTALL FOR MECHANICAL CONTRACTOR TO COMPLY WITH THE MECHANICAL CONTRACTOR'S REVISIONS LIST FOR THE MECHANICAL REMODEL.
4. COOLERS/CONDENSING UNITS TO BE PROVIDED BY OWNER. INSTALL FOR MECHANICAL CONTRACTOR TO COMPLY WITH THE MECHANICAL CONTRACTOR'S REVISIONS LIST FOR THE MECHANICAL REMODEL.
5. MECHANICAL REMODEL SHALL BE COMPLETED BY THE CONTRACTOR AND INSTALLED BY MECHANICAL CONTRACTOR AND SHALL BE IN ACCORDANCE WITH THE MECHANICAL CONTRACTOR'S REVISIONS LIST FOR THE MECHANICAL REMODEL.
6. FOR CLARITY OF REVISIONS, REFER TO MECHANICAL CONTRACTOR'S REVISIONS LIST FOR THE MECHANICAL REMODEL.

**SHAKE SHACK**  
 9601 S. SANTA MONICA BLVD.  
 BEVERLY HILLS, CA 90210

**Gensler**  
 330 South Figueroa Street  
 Los Angeles, California 90071  
 United States  
 Contact: Christopher Mark Conroy, AIA  
 Tel: 213.237.8778  
 Fax: 213.237.2801

**SHELLITE OFFICE:**  
 400 N. Main Street  
 Santa Ana, CA 92701  
 United States  
 Contact: Robert Adams  
 Tel: 913.222.2710  
 Fax: 913.222.2848



**FACTOR**  
 2381 BROOKDALE AVENUE  
 BEVERLY HILLS, CA 90210  
 Tel: 310.222.1000  
 Fax: 310.222.4200  
 Contact: Tom Vanover  
 Tel: 310.877.0332

**TriMark**  
 200 COLLEGE ST  
 PO BOX 2002  
 BOSTON, MA 02113  
 Tel: 617.552.6800  
 Fax: 617.552.3800  
 Contact: Michael Rosenbaum  
 Tel: 617.552.3800

**kpff**  
 300 SOUTH FLORENCE  
 STREET  
 LOS ANGELES, CA 90071  
 Tel: 213.237.3400  
 STRUCTURAL  
 Contact: Claudia Shuler  
 Tel: 213.237.4900  
 CIVIL  
 Contact: Douglas Gordon  
 Tel: 213.237.8200

Date	Description
09/10/21	PKL CD SET
09/10/21	ISSUE FOR PERMITTING
10/01/21	ADDENDUM #1
09/08/22	ISSUE FOR CONSTRUCTION

**Scale Signature**

**Project Name**  
 SHAKE SHACK

**Project Number**  
 SHK-21-001

**Description**  
 MECHANICAL REMODEL ROOF PLAN

**Scale**  
 1/4" = 1'-0"

**M122**

© 2021 Gensler

**1 MECHANICAL REMODEL ROOF PLAN**  
 SCALE: 1/4" = 1'-0"













**Gensler**

330 South Figueroa Street  
 Los Angeles, California 90071  
 United States  
 Contact:  
 Christopher Mark Conroy, AIA  
 Tel: 213.237.3800  
 Fax: 213.237.3801

SATELLITE OFFICE:  
 400 N. Hollywood Blvd.  
 Suite 2405  
 North Hollywood, CA  
 Contact:  
 Christopher Mark Conroy, AIA  
 Tel: 818.254.9000  
 Fax: 818.254.9048

**FACTOR**

3300 BROADWAY AVENUE  
 BEVERLY HILLS, CA 90210  
 Tel: 310.355.1000  
 Fax: 310.355.4900  
 Contact:  
 Tom Traverso  
 Tel: 310.357.0332

**TriMark**

300 COLLEGE ST  
 PO BOX 2002  
 GLENDALE, CALIFORNIA  
 MA 07030  
 Tel: 908.388.8800  
 Fax: 908.388.3800  
 Contact:  
 Michael Himmelfarb  
 Tel: 908.388.2300

**kppff**

300 SOUTH FLORENCE  
 STREET  
 LOS ANGELES, CA 90007  
 Tel: 213.275.5400  
 Fax: 213.275.5400  
 STRUCTURAL  
 Contact:  
 Claudia Steiner  
 Tel: 213.275.5400  
 CIVIL  
 Contact:  
 Dwight Gordon  
 Tel: 213.275.5300

DATE	DESCRIPTION
09/10/21	FOR CD SET
09/01/21	ISSUE FOR PERMITS
01/06/22	ISSUE FOR CONSTRUCTION



Project Name: **SHAKE SHACK**  
 Project Number: **SHK-21-001**  
 Description: **CAPTIVEARE DRAWINGS**

Scale: **NTS**  
**M801**

**HOOD INFORMATION - J004#001000**

ITEM	TAG	MODEL	MANUFACTURER	LENGTH	HEIGHT	TYPE	WALL	DEPTH	WIDTH	HEIGHT	WALL	DEPTH	WIDTH	HEIGHT	WALL	DEPTH	WIDTH	HEIGHT	WALL	DEPTH	WIDTH	HEIGHT
1	LEFT	100	CAPTIVEARE	8' 0"	30"	HEAVY	800	18"	30"	18"	800	18"	30"	18"	800	18"	30"	18"	800	18"	30"	18"
2	RIGHT	100	CAPTIVEARE	8' 0"	30"	HEAVY	800	18"	30"	18"	800	18"	30"	18"	800	18"	30"	18"	800	18"	30"	18"

**HOOD OPTIONS**

1 LEFT FIELD NUMBER 1000 HOOD HEIGHT LEFT  
 1 LEFT LEFT WIDE VERTICAL END MODEL NOT TOP WIDTH 30" BOTTOM WIDTH 30" HIGH INSULATED  
 2 RIGHT FIELD NUMBER 1000 HOOD HEIGHT RIGHT  
 2 RIGHT RIGHT WIDE VERTICAL END MODEL NOT TOP WIDTH 30" BOTTOM WIDTH 30" HIGH INSULATED

**REQUIREMENTS - SEE SPECIFICATIONS**

ITEM	TAG	MODEL	MANUFACTURER	LENGTH	HEIGHT	TYPE	WALL	DEPTH	WIDTH	HEIGHT	WALL	DEPTH	WIDTH	HEIGHT	WALL	DEPTH	WIDTH	HEIGHT	WALL	DEPTH	WIDTH	HEIGHT
1	LEFT	FRONT	100	24"	6"	HEAVY	800	18"	30"	18"	800	18"	30"	18"	800	18"	30"	18"	800	18"	30"	18"
2	RIGHT	FRONT	100	24"	6"	HEAVY	800	18"	30"	18"	800	18"	30"	18"	800	18"	30"	18"	800	18"	30"	18"

**FOR QUESTIONS, CALL THE MANUFACTURER:**  
 CAPTIVEARE  
 PHONE: (310) 900-1001 (EXT. 148-420)  
 WWW.CAPTIVEARE.COM

**REVISIONS**

NO.	DATE	DESCRIPTION
1	09/10/21	FOR CD SET
2	09/01/21	ISSUE FOR PERMITS
3	01/06/22	ISSUE FOR CONSTRUCTION

**CAPTIVEARE**  
 1000 W. 10TH STREET, SUITE 100  
 BEVERLY HILLS, CA 90210  
 TEL: 310.900.1001  
 WWW.CAPTIVEARE.COM

**SHAKE SHACK - 1180 - Beverly Hills, CA  
 BEVERLY HILLS, CA, 90210**

**DATE:** 9/20/2021  
**DRAWN:** 4841259  
**SCALE:** NTS  
**MASTER DRAWING**

**SHEET NO.**

**FRONT DETAIL**

**REAR WALL ATTACHMENT**

**TOP-RISE SHAK SHACK**

**SHAK SHACK ATTACHMENT**

**FRONT DETAIL**

**REAR WALL ATTACHMENT**

**TOP-RISE SHAK SHACK**

**SHAK SHACK ATTACHMENT**

002213.01.dwg - 1180 - Shake Shack - Beverly Hills, CA - 90210



**Gensler**  
 535 South Figueroa Street  
 Los Angeles, California 90071  
 United States  
 Contact: Christopher Mark Conroy, AIA  
 Tel: 213.237.3800  
 Fax: 213.237.3801

**SAFETYVILLE OFFICE**  
 400 North Main Street  
 Santa Clara, CA 95050  
 United States  
 Contact: Chris Hines, AIA  
 Tel: 415.222.2700  
 Fax: 415.222.2700

**CONTRACTOR**  
**FACTOR**  
 2380 BROADWAY AVENUE  
 BEVERLY HILLS, CA 90210  
 Tel: 310.275.1000  
 Fax: 310.275.4900  
 Contact: Tom Vanuren  
 Tel: 310.275.1000  
 Fax: 310.275.1000

**TRIMARK**  
 300 COLLEGE ST  
 P.O. BOX 202  
 BOSTON, MA 02113  
 Tel: 617.552.6600  
 Fax: 617.552.6600  
 Contact: Michael Hennessey  
 Tel: 617.552.6600  
 Fax: 617.552.6600

**kppff**  
 300 SOUTH FLORENCE  
 STREET  
 LOS ANGELES, CA 90007  
 Tel: 213.233.2400  
 STRUCTURAL  
 CONTACT: Charles Miller  
 Tel: 213.233.2400  
 CIVIL  
 CONTACT: Douglas Carter  
 Tel: 213.233.2400

Rev	Date	Description
01	09/15/21	ISSUE FOR PERMIT
02	09/15/21	ISSUE FOR CONSTRUCTION

**DATE:** 7/30/2021  
**DWG NO:** 4881379  
**SCALE:** 1/8"=1'-0"  
**MASTER DRAWING**

**Project Name:** SHAKE SHACK  
**Project Number:** SHK-21-001  
**Description:** CAPTIVEAIRE DRAWINGS  
**Scale:** NTS  
**M803**

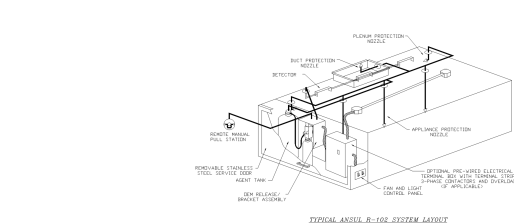
**FIRE SYSTEM INFORMATION - JOB#4881379**

FIRE TAG	TYPE	SIZE	INSTALLATION
1	MECHANICAL	3/4"	LOCATION ON HOOD
2	MECHANICAL	3/4"	FIRE CABINET (LEFT - LEFT HOOD)

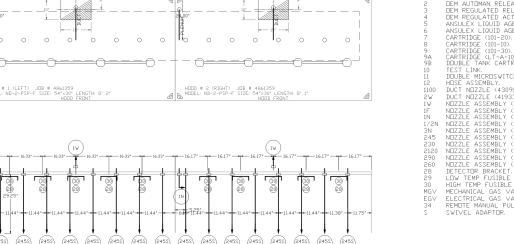
**NOTES**

- SEE FIRE HOODS AS SHOWN
- TRIPPING ELBOWS, TEES AND KNEES SUPPLIED BY CAG
- APPROPRIATE MODELS OF FLOW PATTERNS SKETCHED BY SHELVEG, SALAMANDRE, ETC.
- MINIMUM 9" ELBOWS BY SHOWN LINE FROM TANK TO FIRST HOZZLE
- COVERING A RANGE FROM 30" TO 36" TO REFLECT GENERAL PIPING REQUIREMENTS
- IF APPLICABLE, PRE-PRIMED CARTRIDGES PROPEL AND SHOCKER LOADS
- FACTORY PIPING EXTENDS A MAXIMUM OF 6" ABOVE THE TOP OF THE HOOD
- APPLIANCE DIMENSIONS LISTED REPRESENT THE COOKING SURFACE SIZE, NOT THE OVERALL APPLIANCE SIZE
- THIS FIRE SYSTEM COMPLIES WITH UL 300 REQUIREMENTS

**JOB #** 4881379  
**JOB NAME** SHAKE SHACK - 1881 - BEVERLY HILLS, CA  
**SYSTEM SIZE** 4881379/1881/1881 - TYPICAL PER HOODING 3H  
**HOZZ # 1** 1" B 1/2" LONG 1/2" 5/8" WIDE x 30" HIGH  
**HOZZ # 2** METAL BLOW-OFF CAPS INCLUDED  
**HOZZ # 3** 1" B 1/2" LONG 1/2" 5/8" WIDE x 30" HIGH  
**HOZZ # 4** 1" B 1/2" LONG 1/2" 5/8" WIDE x 30" HIGH  
**HOZZ # 5** METAL BLOW-OFF CAPS INCLUDED



**TYPICAL ANSUL R-102 SYSTEM LAYOUT**



**LEGEND - FIRE CABINET ANSUL SYSTEM**

- 18 15 GALLON TANK
- 19 2 GALLON TANK
- 20 DEM REGULATED RELEASE
- 21 DEM REGULATED RELEASE
- 22 DEM REGULATED RELEASE
- 23 ANSUL LIQUID AGENT (15 GALL.)
- 24 ANSUL LIQUID AGENT (15 GALL.)
- 25 CARTRIDGE (100-20)
- 26 CARTRIDGE (100-20)
- 27 CARTRIDGE (100-20)
- 28 CARTRIDGE (100-20)
- 29 DOUBLE TANK CARTRIDGE
- 30 T.E.T. CAP
- 31 DOUBLE MICROSWITCH
- 32 HOZZ ASSEMBLY
- 33 HOZZ ASSEMBLY (4881379)
- 34 HOZZ ASSEMBLY (4881379)
- 35 HOZZ ASSEMBLY (4881379)
- 36 HOZZ ASSEMBLY (4881379)
- 37 HOZZ ASSEMBLY (4881379)
- 38 HOZZ ASSEMBLY (4881379)
- 39 HOZZ ASSEMBLY (4881379)
- 40 HOZZ ASSEMBLY (4881379)
- 41 HOZZ ASSEMBLY (4881379)
- 42 HOZZ ASSEMBLY (4881379)
- 43 HOZZ ASSEMBLY (4881379)
- 44 HOZZ ASSEMBLY (4881379)
- 45 HOZZ ASSEMBLY (4881379)
- 46 HOZZ ASSEMBLY (4881379)
- 47 HOZZ ASSEMBLY (4881379)
- 48 HOZZ ASSEMBLY (4881379)
- 49 HOZZ ASSEMBLY (4881379)
- 50 HOZZ ASSEMBLY (4881379)
- 51 HOZZ ASSEMBLY (4881379)
- 52 HOZZ ASSEMBLY (4881379)
- 53 HOZZ ASSEMBLY (4881379)
- 54 HOZZ ASSEMBLY (4881379)
- 55 HOZZ ASSEMBLY (4881379)
- 56 HOZZ ASSEMBLY (4881379)
- 57 HOZZ ASSEMBLY (4881379)
- 58 HOZZ ASSEMBLY (4881379)
- 59 HOZZ ASSEMBLY (4881379)
- 60 HOZZ ASSEMBLY (4881379)
- 61 HOZZ ASSEMBLY (4881379)
- 62 HOZZ ASSEMBLY (4881379)
- 63 HOZZ ASSEMBLY (4881379)
- 64 HOZZ ASSEMBLY (4881379)
- 65 HOZZ ASSEMBLY (4881379)
- 66 HOZZ ASSEMBLY (4881379)
- 67 HOZZ ASSEMBLY (4881379)
- 68 HOZZ ASSEMBLY (4881379)
- 69 HOZZ ASSEMBLY (4881379)
- 70 HOZZ ASSEMBLY (4881379)
- 71 HOZZ ASSEMBLY (4881379)
- 72 HOZZ ASSEMBLY (4881379)
- 73 HOZZ ASSEMBLY (4881379)
- 74 HOZZ ASSEMBLY (4881379)
- 75 HOZZ ASSEMBLY (4881379)
- 76 HOZZ ASSEMBLY (4881379)
- 77 HOZZ ASSEMBLY (4881379)
- 78 HOZZ ASSEMBLY (4881379)
- 79 HOZZ ASSEMBLY (4881379)
- 80 HOZZ ASSEMBLY (4881379)
- 81 HOZZ ASSEMBLY (4881379)
- 82 HOZZ ASSEMBLY (4881379)
- 83 HOZZ ASSEMBLY (4881379)
- 84 HOZZ ASSEMBLY (4881379)
- 85 HOZZ ASSEMBLY (4881379)
- 86 HOZZ ASSEMBLY (4881379)
- 87 HOZZ ASSEMBLY (4881379)
- 88 HOZZ ASSEMBLY (4881379)
- 89 HOZZ ASSEMBLY (4881379)
- 90 HOZZ ASSEMBLY (4881379)
- 91 HOZZ ASSEMBLY (4881379)
- 92 HOZZ ASSEMBLY (4881379)
- 93 HOZZ ASSEMBLY (4881379)
- 94 HOZZ ASSEMBLY (4881379)
- 95 HOZZ ASSEMBLY (4881379)
- 96 HOZZ ASSEMBLY (4881379)
- 97 HOZZ ASSEMBLY (4881379)
- 98 HOZZ ASSEMBLY (4881379)
- 99 HOZZ ASSEMBLY (4881379)
- 100 HOZZ ASSEMBLY (4881379)
- 101 HOZZ ASSEMBLY (4881379)
- 102 HOZZ ASSEMBLY (4881379)
- 103 HOZZ ASSEMBLY (4881379)
- 104 HOZZ ASSEMBLY (4881379)
- 105 HOZZ ASSEMBLY (4881379)
- 106 HOZZ ASSEMBLY (4881379)
- 107 HOZZ ASSEMBLY (4881379)
- 108 HOZZ ASSEMBLY (4881379)
- 109 HOZZ ASSEMBLY (4881379)
- 110 HOZZ ASSEMBLY (4881379)
- 111 HOZZ ASSEMBLY (4881379)
- 112 HOZZ ASSEMBLY (4881379)
- 113 HOZZ ASSEMBLY (4881379)
- 114 HOZZ ASSEMBLY (4881379)
- 115 HOZZ ASSEMBLY (4881379)
- 116 HOZZ ASSEMBLY (4881379)
- 117 HOZZ ASSEMBLY (4881379)
- 118 HOZZ ASSEMBLY (4881379)
- 119 HOZZ ASSEMBLY (4881379)
- 120 HOZZ ASSEMBLY (4881379)
- 121 HOZZ ASSEMBLY (4881379)
- 122 HOZZ ASSEMBLY (4881379)
- 123 HOZZ ASSEMBLY (4881379)
- 124 HOZZ ASSEMBLY (4881379)
- 125 HOZZ ASSEMBLY (4881379)
- 126 HOZZ ASSEMBLY (4881379)
- 127 HOZZ ASSEMBLY (4881379)
- 128 HOZZ ASSEMBLY (4881379)
- 129 HOZZ ASSEMBLY (4881379)
- 130 HOZZ ASSEMBLY (4881379)
- 131 HOZZ ASSEMBLY (4881379)
- 132 HOZZ ASSEMBLY (4881379)
- 133 HOZZ ASSEMBLY (4881379)
- 134 HOZZ ASSEMBLY (4881379)
- 135 HOZZ ASSEMBLY (4881379)
- 136 HOZZ ASSEMBLY (4881379)
- 137 HOZZ ASSEMBLY (4881379)
- 138 HOZZ ASSEMBLY (4881379)
- 139 HOZZ ASSEMBLY (4881379)
- 140 HOZZ ASSEMBLY (4881379)
- 141 HOZZ ASSEMBLY (4881379)
- 142 HOZZ ASSEMBLY (4881379)
- 143 HOZZ ASSEMBLY (4881379)
- 144 HOZZ ASSEMBLY (4881379)
- 145 HOZZ ASSEMBLY (4881379)
- 146 HOZZ ASSEMBLY (4881379)
- 147 HOZZ ASSEMBLY (4881379)
- 148 HOZZ ASSEMBLY (4881379)
- 149 HOZZ ASSEMBLY (4881379)
- 150 HOZZ ASSEMBLY (4881379)
- 151 HOZZ ASSEMBLY (4881379)
- 152 HOZZ ASSEMBLY (4881379)
- 153 HOZZ ASSEMBLY (4881379)
- 154 HOZZ ASSEMBLY (4881379)
- 155 HOZZ ASSEMBLY (4881379)
- 156 HOZZ ASSEMBLY (4881379)
- 157 HOZZ ASSEMBLY (4881379)
- 158 HOZZ ASSEMBLY (4881379)
- 159 HOZZ ASSEMBLY (4881379)
- 160 HOZZ ASSEMBLY (4881379)
- 161 HOZZ ASSEMBLY (4881379)
- 162 HOZZ ASSEMBLY (4881379)
- 163 HOZZ ASSEMBLY (4881379)
- 164 HOZZ ASSEMBLY (4881379)
- 165 HOZZ ASSEMBLY (4881379)
- 166 HOZZ ASSEMBLY (4881379)
- 167 HOZZ ASSEMBLY (4881379)
- 168 HOZZ ASSEMBLY (4881379)
- 169 HOZZ ASSEMBLY (4881379)
- 170 HOZZ ASSEMBLY (4881379)
- 171 HOZZ ASSEMBLY (4881379)
- 172 HOZZ ASSEMBLY (4881379)
- 173 HOZZ ASSEMBLY (4881379)
- 174 HOZZ ASSEMBLY (4881379)
- 175 HOZZ ASSEMBLY (4881379)
- 176 HOZZ ASSEMBLY (4881379)
- 177 HOZZ ASSEMBLY (4881379)
- 178 HOZZ ASSEMBLY (4881379)
- 179 HOZZ ASSEMBLY (4881379)
- 180 HOZZ ASSEMBLY (4881379)
- 181 HOZZ ASSEMBLY (4881379)
- 182 HOZZ ASSEMBLY (4881379)
- 183 HOZZ ASSEMBLY (4881379)
- 184 HOZZ ASSEMBLY (4881379)
- 185 HOZZ ASSEMBLY (4881379)
- 186 HOZZ ASSEMBLY (4881379)
- 187 HOZZ ASSEMBLY (4881379)
- 188 HOZZ ASSEMBLY (4881379)
- 189 HOZZ ASSEMBLY (4881379)
- 190 HOZZ ASSEMBLY (4881379)
- 191 HOZZ ASSEMBLY (4881379)
- 192 HOZZ ASSEMBLY (4881379)
- 193 HOZZ ASSEMBLY (4881379)
- 194 HOZZ ASSEMBLY (4881379)
- 195 HOZZ ASSEMBLY (4881379)
- 196 HOZZ ASSEMBLY (4881379)
- 197 HOZZ ASSEMBLY (4881379)
- 198 HOZZ ASSEMBLY (4881379)
- 199 HOZZ ASSEMBLY (4881379)
- 200 HOZZ ASSEMBLY (4881379)
- 201 HOZZ ASSEMBLY (4881379)
- 202 HOZZ ASSEMBLY (4881379)
- 203 HOZZ ASSEMBLY (4881379)
- 204 HOZZ ASSEMBLY (4881379)
- 205 HOZZ ASSEMBLY (4881379)
- 206 HOZZ ASSEMBLY (4881379)
- 207 HOZZ ASSEMBLY (4881379)
- 208 HOZZ ASSEMBLY (4881379)
- 209 HOZZ ASSEMBLY (4881379)
- 210 HOZZ ASSEMBLY (4881379)
- 211 HOZZ ASSEMBLY (4881379)
- 212 HOZZ ASSEMBLY (4881379)
- 213 HOZZ ASSEMBLY (4881379)
- 214 HOZZ ASSEMBLY (4881379)
- 215 HOZZ ASSEMBLY (4881379)
- 216 HOZZ ASSEMBLY (4881379)
- 217 HOZZ ASSEMBLY (4881379)
- 218 HOZZ ASSEMBLY (4881379)
- 219 HOZZ ASSEMBLY (4881379)
- 220 HOZZ ASSEMBLY (4881379)
- 221 HOZZ ASSEMBLY (4881379)
- 222 HOZZ ASSEMBLY (4881379)
- 223 HOZZ ASSEMBLY (4881379)
- 224 HOZZ ASSEMBLY (4881379)
- 225 HOZZ ASSEMBLY (4881379)
- 226 HOZZ ASSEMBLY (4881379)
- 227 HOZZ ASSEMBLY (4881379)
- 228 HOZZ ASSEMBLY (4881379)
- 229 HOZZ ASSEMBLY (4881379)
- 230 HOZZ ASSEMBLY (4881379)
- 231 HOZZ ASSEMBLY (4881379)
- 232 HOZZ ASSEMBLY (4881379)
- 233 HOZZ ASSEMBLY (4881379)
- 234 HOZZ ASSEMBLY (4881379)
- 235 HOZZ ASSEMBLY (4881379)
- 236 HOZZ ASSEMBLY (4881379)
- 237 HOZZ ASSEMBLY (4881379)
- 238 HOZZ ASSEMBLY (4881379)
- 239 HOZZ ASSEMBLY (4881379)
- 240 HOZZ ASSEMBLY (4881379)
- 241 HOZZ ASSEMBLY (4881379)
- 242 HOZZ ASSEMBLY (4881379)
- 243 HOZZ ASSEMBLY (4881379)
- 244 HOZZ ASSEMBLY (4881379)
- 245 HOZZ ASSEMBLY (4881379)
- 246 HOZZ ASSEMBLY (4881379)
- 247 HOZZ ASSEMBLY (4881379)
- 248 HOZZ ASSEMBLY (4881379)
- 249 HOZZ ASSEMBLY (4881379)
- 250 HOZZ ASSEMBLY (4881379)
- 251 HOZZ ASSEMBLY (4881379)
- 252 HOZZ ASSEMBLY (4881379)
- 253 HOZZ ASSEMBLY (4881379)
- 254 HOZZ ASSEMBLY (4881379)
- 255 HOZZ ASSEMBLY (4881379)
- 256 HOZZ ASSEMBLY (4881379)
- 257 HOZZ ASSEMBLY (4881379)
- 258 HOZZ ASSEMBLY (4881379)
- 259 HOZZ ASSEMBLY (4881379)
- 260 HOZZ ASSEMBLY (4881379)
- 261 HOZZ ASSEMBLY (4881379)
- 262 HOZZ ASSEMBLY (4881379)
- 263 HOZZ ASSEMBLY (4881379)
- 264 HOZZ ASSEMBLY (4881379)
- 265 HOZZ ASSEMBLY (4881379)
- 266 HOZZ ASSEMBLY (4881379)
- 267 HOZZ ASSEMBLY (4881379)
- 268 HOZZ ASSEMBLY (4881379)
- 269 HOZZ ASSEMBLY (4881379)
- 270 HOZZ ASSEMBLY (4881379)
- 271 HOZZ ASSEMBLY (4881379)
- 272 HOZZ ASSEMBLY (4881379)
- 273 HOZZ ASSEMBLY (4881379)
- 274 HOZZ ASSEMBLY (4881379)
- 275 HOZZ ASSEMBLY (4881379)
- 276 HOZZ ASSEMBLY (4881379)
- 277 HOZZ ASSEMBLY (4881379)
- 278 HOZZ ASSEMBLY (4881379)
- 279 HOZZ ASSEMBLY (4881379)
- 280 HOZZ ASSEMBLY (4881379)
- 281 HOZZ ASSEMBLY (4881379)
- 282 HOZZ ASSEMBLY (4881379)
- 283 HOZZ ASSEMBLY (4881379)
- 284 HOZZ ASSEMBLY (4881379)
- 285 HOZZ ASSEMBLY (4881379)
- 286 HOZZ ASSEMBLY (4881379)
- 287 HOZZ ASSEMBLY (4881379)
- 288 HOZZ ASSEMBLY (4881379)
- 289 HOZZ ASSEMBLY (4881379)
- 290 HOZZ ASSEMBLY (4881379)
- 291 HOZZ ASSEMBLY (4881379)
- 292 HOZZ ASSEMBLY (4881379)
- 293 HOZZ ASSEMBLY (4881379)
- 294 HOZZ ASSEMBLY (4881379)
- 295 HOZZ ASSEMBLY (4881379)
- 296 HOZZ ASSEMBLY (4881379)
- 297 HOZZ ASSEMBLY (4881379)
- 298 HOZZ ASSEMBLY (4881379)
- 299 HOZZ ASSEMBLY (4881379)
- 300 HOZZ ASSEMBLY (4881379)
- 301 HOZZ ASSEMBLY (4881379)
- 302 HOZZ ASSEMBLY (4881379)
- 303 HOZZ ASSEMBLY (4881379)
- 304 HOZZ ASSEMBLY (4881379)
- 305 HOZZ ASSEMBLY (4881379)
- 306 HOZZ ASSEMBLY (4881379)
- 307 HOZZ ASSEMBLY (4881379)
- 308 HOZZ ASSEMBLY (4881379)
- 309 HOZZ ASSEMBLY (4881379)
- 310 HOZZ ASSEMBLY (4881379)
- 311 HOZZ ASSEMBLY (4881379)
- 312 HOZZ ASSEMBLY (4881379)
- 313 HOZZ ASSEMBLY (4881379)
- 314 HOZZ ASSEMBLY (4881379)
- 315 HOZZ ASSEMBLY (4881379)
- 316 HOZZ ASSEMBLY (4881379)
- 317 HOZZ ASSEMBLY (4881379)
- 318 HOZZ ASSEMBLY (4881379)
- 319 HOZZ ASSEMBLY (4881379)
- 320 HOZZ ASSEMBLY (4881379)
- 321 HOZZ ASSEMBLY (4881379)
- 322 HOZZ ASSEMBLY (4881379)
- 323 HOZZ ASSEMBLY (4881379)
- 324 HOZZ ASSEMBLY (4881379)
- 325 HOZZ ASSEMBLY (4881379)
- 326 HOZZ ASSEMBLY (4881379)
- 327 HOZZ ASSEMBLY (4881379)
- 328 HOZZ ASSEMBLY (4881379)
- 329 HOZZ ASSEMBLY (4881379)
- 330 HOZZ ASSEMBLY (4881379)
- 331 HOZZ ASSEMBLY (4881379)
- 332 HOZZ ASSEMBLY (4881379)
- 333 HOZZ ASSEMBLY (4881379)
- 334 HOZZ ASSEMBLY (4881379)
- 335 HOZZ ASSEMBLY (4881379)
- 336 HOZZ ASSEMBLY (4881379)
- 337 HOZZ ASSEMBLY (4881379)
- 338 HOZZ ASSEMBLY (4881379)
- 339 HOZZ ASSEMBLY (4881379)
- 340 HOZZ ASSEMBLY (4881379)
- 341 HOZZ ASSEMBLY (4881379)
- 342 HOZZ ASSEMBLY (4881379)
- 343 HOZZ ASSEMBLY (4881379)
- 344 HOZZ ASSEMBLY (4881379)
- 345 HOZZ ASSEMBLY (4881379)
- 346 HOZZ ASSEMBLY (4881379)
- 347 HOZZ ASSEMBLY (4881379)
- 348 HOZZ ASSEMBLY (4881379)
- 349 HOZZ ASSEMBLY (4881379)
- 350 HOZZ ASSEMBLY (4881379)
- 351 HOZZ ASSEMBLY (4881379)
- 352 HOZZ ASSEMBLY (4881379)
- 353 HOZZ ASSEMBLY (4881379)
- 354 HOZZ ASSEMBLY (4881379)
- 355 HOZZ ASSEMBLY (4881379)
- 356 HOZZ ASSEMBLY (4881379)
- 357 HOZZ ASSEMBLY (4881379)
- 358 HOZZ ASSEMBLY (4881379)
- 359 HOZZ ASSEMBLY (4881379)
- 360 HOZZ ASSEMBLY (4881379)
- 361 HOZZ ASSEMBLY (4881379)
- 362 HOZZ ASSEMBLY (4881379)
- 363 HOZZ ASSEMBLY (4881379)
- 364 HOZZ ASSEMBLY (4881379)
- 365 HOZZ ASSEMBLY (4881379)
- 366 HOZZ ASSEMBLY (4881379)
- 367 HOZZ ASSEMBLY (4881379)
- 368 HOZZ ASSEMBLY (4881379)
- 369 HOZZ ASSEMBLY (4881379)
- 370 HOZZ ASSEMBLY (4881379)
- 371 HOZZ ASSEMBLY (4881379)
- 372 HOZZ ASSEMBLY (4881379)
- 373 HOZZ ASSEMBLY (4881379)
- 374 HOZZ ASSEMBLY (4881379)
- 375 HOZZ ASSEMBLY (4881379)
- 376 HOZZ ASSEMBLY (4881379)
- 377 HOZZ ASSEMBLY (4881379)
- 378 HOZZ ASSEMBLY (4881379)
- 379 HOZZ ASSEMBLY (4881379)
- 380 HOZZ ASSEMBLY (4881379)
- 381 HOZZ ASSEMBLY (4881379)
- 382 HOZZ ASSEMBLY (4881379)
- 383 HOZZ ASSEMBLY (4881379)
- 384 HOZZ ASSEMBLY (4881379)
- 385 HOZZ ASSEMBLY (4881379)
- 386 HOZZ ASSEMBLY (4881379)
- 387 HOZZ ASSEMBLY (4881379)
- 388 HOZZ ASSEMBLY (4881379)
- 389 HOZZ ASSEMBLY (4881379)
- 390 HOZZ ASSEMBLY (4881379)
- 391 HOZZ ASSEMBLY (4881379)
- 392 HOZZ ASSEMBLY (4881379)
- 393 HOZZ ASSEMBLY (4881379)
- 394 HOZZ ASSEMBLY (4881379)
- 395 HOZZ ASSEMBLY (4881379)
- 396 HOZZ ASSEMBLY (4881379)
- 397 HOZZ ASSEMBLY (4881379)
- 398 HOZZ ASSEMBLY (4881379)
- 399 HOZZ ASSEMBLY (4881379)
- 400 HOZZ ASSEMBLY (4881379)
- 401 HOZZ ASSEMBLY (4881379)
- 402 HOZZ ASSEMBLY (4881379)
- 403 HOZZ ASSEMBLY (4881379)
- 404 HOZZ ASSEMBLY (4881379)
- 405 HOZZ ASSEMBLY (4881379)
- 406 HOZZ ASSEMBLY (4881379)
- 407 HOZZ ASSEMBLY (4881379)
- 408 HOZZ ASSEMBLY (4881379)
- 409 HOZZ ASSEMBLY (4881379)
- 410 HOZZ ASSEMBLY (4881379)
- 411 HOZZ ASSEMBLY (4881379)
- 412 HOZZ ASSEMBLY (4881379)
- 413 HOZZ ASSEMBLY (4881379)
- 414 HOZZ ASSEMBLY (4881379)
- 415 HOZZ ASSEMBLY (4881379)
- 416 HOZZ ASSEMBLY (4881379)
- 417 HOZZ ASSEMBLY (4881379)
- 418 HOZZ ASSEMBLY (4881379)
- 419 HOZZ ASSEMBLY (4881379)
- 420 HOZZ ASSEMBLY (4881379)
- 421 HOZZ ASSEMBLY (4881379)
- 422 HOZZ ASSEMBLY (4881379)
- 423 HOZZ ASSEMBLY (4881379)
- 424 HOZZ ASSEMBLY (4881379)
- 425 HOZZ ASSEMBLY (4881379)
- 426 HOZZ ASSEMBLY (4881379)
- 427 HOZZ ASSEMBLY (4881379)
- 428 HOZZ ASSEMBLY (4881379)
- 429 HOZZ ASSEMBLY (4881379)
- 430 HOZZ ASSEMBLY (4881379)
- 431 HOZZ ASSEMBLY (4881379)
- 432 HOZZ ASSEMBLY (4881379)
- 433 HOZZ ASSEMBLY (4881379)
- 434 HOZZ ASSEMBLY (4881379)
- 435 HOZZ ASSEMBLY (4881379)
- 436 HOZZ ASSEMBLY (4881379)
- 437 HOZZ ASSEMBLY (4881379)
- 438 HOZZ ASSEMBLY (4881379)
- 439 HOZZ ASSEMBLY (4881379)
- 440 HOZZ ASSEMBLY (4881379)
- 441 HOZZ ASSEMBLY (4881379)
- 442 HOZZ ASSEMBLY (4881379)
- 443 HOZZ ASSEMBLY (4881379)
- 444 HOZZ ASSEMBLY (4881379)
- 445 HOZZ ASSEMBLY (4881379)
- 446 HOZZ ASSEMBLY (4881379)
- 447 HOZZ ASSEMBLY (4881379)
- 448 HOZZ ASSEMBLY (4881379)
- 449 HOZZ ASSEMBLY (4881379)
- 450 HOZZ ASSEMBLY (4881379)
- 451 HOZZ ASSEMBLY (4881379)
- 452 HOZZ ASSEMBLY (4881379)
- 453 HOZZ ASSEMBLY (4881379)
- 454 HOZZ ASSEMBLY (4881379)
- 455 HOZZ ASSEMBLY (4881379)
- 456 HOZZ ASSEMBLY (4881379)
- 457 HOZZ ASSEMBLY (4881379)
- 458 HOZZ ASSEMBLY (4881379)
- 459 HOZZ ASSEMBLY (4881379)
- 460 HOZZ ASSEMBLY (4881379)
- 461 HOZZ ASSEMBLY (4881379)
- 462 HOZZ ASSEMBLY (4881379)
- 463 HOZZ ASSEMBLY (4881379)
- 464 HOZZ ASSEMBLY (4881379)
- 465 HOZZ ASSEMBLY (4881379)
- 466 HOZZ ASSEMBLY (4881379)
- 467 HOZZ ASSEMBLY (4881379)
- 468 HOZZ ASSEMBLY (4881379)
- 469 HOZZ ASSEMBLY (4881379)
- 470 HOZZ ASSEMBLY (4881379)
- 471 HOZZ ASSEMBLY (4881379)
- 472 HOZZ ASSEMBLY (4881379)
- 473 HOZZ ASSEMBLY (4881379)
- 474 HOZZ ASSEMBLY (4881379)
- 475 HOZZ ASSEMBLY (4881379)
- 476 HOZZ ASSEMBLY (4881379)
- 477 HOZZ ASSEMBLY (4881379)
- 478 HOZZ ASSEMBLY (4881379)
- 479 HOZZ ASSEMBLY (4881379)
- 480 HOZZ ASSEMBLY (4881379)
- 481 HOZZ ASSEMBLY (4881379)
- 482 HOZZ ASSEMBLY (4881379)
- 483 HOZZ ASSEMBLY (4881379)
- 484 HOZZ ASSEMBLY (4881379)
- 485 HOZZ

**Gensler**

330 South Figueroa Street  
 Los Angeles, California 90071  
 United States  
 Contact: Christopher Mark Conroy, AIA  
 Tel: 213.237.3700 Fax: 213.237.3701  
 Tel: 213.237.3700  
 SAUL LOEB OFFICE  
 400 Wilshire Blvd  
 Suite 2400  
 Los Angeles, CA 90010  
 United States  
 Contact: Christopher Mark Conroy, AIA  
 Tel: 213.237.3700 Fax: 213.237.3701

**THE FACTOR**  
 CIVIL ENGINEERS, INC.  
 2381 BROADWAY AVENUE  
 BEVERLY HILLS, CA 90210  
 Tel: 310.252.1000 Fax: 310.252.4900  
 Contact: Tom Yarnum  
 Tel: 310.252.1000  
**TriMark**  
 200 COLLEGE ST.  
 PO BOX 2002  
 BOSTON, MA 02112  
 Tel: 617.552.6800 Fax: 617.552.3800  
 Contact: Michael Rosenbaum  
 Tel: 617.552.3800  
**kpff**  
 300 SOUTH FLORENCE  
 STREET  
 LOS ANGELES, CA 90017  
 Tel: 213.233.2400  
 STRUCTURAL  
 Contact: Claudia Steiner  
 Tel: 213.233.2400  
 CIVIL  
 Contact: Douglas Gordon  
 Tel: 213.233.2400

**REVISIONS**

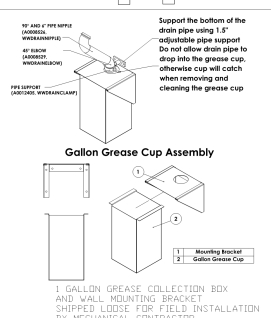
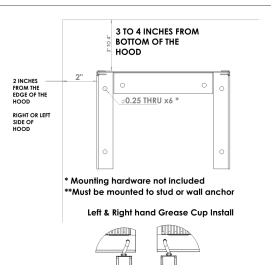
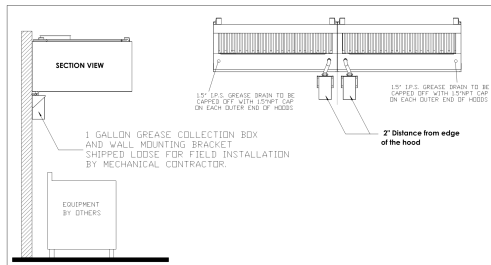
NO.	DATE	DESCRIPTION
1	1/26/2011	ISSUE FOR PERMITS
2	1/26/2011	ISSUE FOR CONSTRUCTION

**CAPTIVEAIRE**  
 Eastern PA Mechanical  
 700 EAST 22ND STREET, PHILADELPHIA, PA 19103  
 Tel: 215.381.1000 Fax: 215.381.1001

Shake Shack - 1386 - Beverly Hills, CA  
 BEVERLY HILLS, CA - 90210

DATE: 1/26/2011  
 DWG.#: SHK-21-001  
 DRAWN BY: CH-108  
 SCALE:  
 MASTER DRAWING

SHEET NO. 4



CUSTOMER APPROVAL TO MANUFACTURE:

Approved as Noted	<input type="checkbox"/>
Agrees with All Exception Items	<input type="checkbox"/>
Revised and Resubmitted	<input type="checkbox"/>
Special	<input type="checkbox"/>
Noted	<input type="checkbox"/>

Issue Description

01/26/2011	ISSUE FOR PERMITS
01/26/2011	ISSUE FOR CONSTRUCTION



Project Name: **SHAKE SHACK**  
 Project Number: **SHK-21-001**  
 Description: **CAPTIVEAIRE DRAWINGS**

Scale: **NTS**  
**M804**



**Gensler**

330 South Figueroa Street  
 Los Angeles, California 90071  
 United States  
 Contact: Christopher Mark Conroy, AIA  
 Tel: 213.237.9700  
 Fax: 213.237.2801

SATELLITE OFFICE:  
 400 Wilshire Drive  
 Suite 2405  
 Torrance, CA 90503  
 United States  
 Contact: Christopher Mark Conroy, AIA  
 Tel: 815.254.9000  
 Fax: 815.252.9484

**FACTOR**

238 BROADWAY AVENUE  
 8TH FLOOR  
 NEW YORK, NY 10038  
 United States  
 Contact: Tom Tompkins  
 Tel: 312.877.2322

**TriMark**

300 COLLEGE ST  
 PO BOX 2022  
 BOSTON, MA 02112  
 United States  
 Contact: Michael Rosenbaum  
 Tel: 617.552.3200

**kppff**

300 SOUTH FLORENCE  
 STREET  
 LOS ANGELES, CA 90017  
 United States  
 Contact: Claudia Stricker  
 Tel: 213.233.4900

CIVIL  
 Contact: Douglas Gordon  
 Tel: 213.418.8201

Δ	Date	Description
	09/10/21	PKG CD SET
	09/01/21	ISSUE FOR PERMITTING
	01/06/22	ISSUE FOR CONSTRUCTION

Small Signature



Project Name: **SHAKE SHACK**

Project Number: **SHK-21-001**

Description: **CAPTIVEAIRE DRAWINGS**

Scale: **NTS**

**M806**

© 2021 Gensler

**REVISIONS**

NO.	DATE	DESCRIPTION

**CAPTIVEAIRE**  
Eastern Air Mechanical

Shake Shack - 1380 - Beverly Hills, CA  
 BEVERLY HILLS, CA, 90210

DATE: 4/30/2021  
 DWG. N  
 DRAWN BY: EB-108  
 SCALE:  
 MASTER DRAWING  
 SHEET NO. 6

**REVISIONS**

NO.	DATE	DESCRIPTION

**REVISIONS**

NO.	DATE	DESCRIPTION

**REVISIONS**

NO.	DATE	DESCRIPTION

**REVISIONS**

NO.	DATE	DESCRIPTION

**REVISIONS**

NO.	DATE	DESCRIPTION

**REVISIONS**

NO.	DATE	DESCRIPTION

**REVISIONS**

NO.	DATE	DESCRIPTION

**REVISIONS**

NO.	DATE	DESCRIPTION

**REVISIONS**

NO.	DATE	DESCRIPTION

**REVISIONS**

NO.	DATE	DESCRIPTION

**REVISIONS**

NO.	DATE	DESCRIPTION

**REVISIONS**

NO.	DATE	DESCRIPTION

**REVISIONS**

NO.	DATE	DESCRIPTION

**REVISIONS**

NO.	DATE	DESCRIPTION

**REVISIONS**

NO.	DATE	DESCRIPTION

**REVISIONS**

NO.	DATE	DESCRIPTION

**REVISIONS**

NO.	DATE	DESCRIPTION

**REVISIONS**

NO.	DATE	DESCRIPTION

**REVISIONS**

NO.	DATE	DESCRIPTION

**REVISIONS**

NO.	DATE	DESCRIPTION

**REVISIONS**

NO.	DATE	DESCRIPTION

**REVISIONS**

NO.	DATE	DESCRIPTION

**REVISIONS**

NO.	DATE	DESCRIPTION

**REVISIONS**

NO.	DATE	DESCRIPTION

**REVISIONS**

NO.	DATE	DESCRIPTION

**REVISIONS**

NO.	DATE	DESCRIPTION

**REVISIONS**

NO.	DATE	DESCRIPTION

**REVISIONS**

NO.	DATE	DESCRIPTION

**REVISIONS**

NO.	DATE	DESCRIPTION

**REVISIONS**

NO.	DATE	DESCRIPTION

**REVISIONS**

NO.	DATE	DESCRIPTION

**REVISIONS**

NO.	DATE	DESCRIPTION

**REVISIONS**

NO.	DATE	DESCRIPTION

**REVISIONS**

NO.	DATE	DESCRIPTION

**REVISIONS**

NO.	DATE	DESCRIPTION

**REVISIONS**

NO.	DATE	DESCRIPTION

**REVISIONS**

NO.	DATE	DESCRIPTION

**REVISIONS**

NO.	DATE	DESCRIPTION

**REVISIONS**

NO.	DATE	DESCRIPTION

**REVISIONS**

NO.	DATE	DESCRIPTION

**REVISIONS**

NO.	DATE	DESCRIPTION

**REVISIONS**

NO.	DATE	DESCRIPTION

**REVISIONS**

NO.	DATE	DESCRIPTION

**REVISIONS**

NO.	DATE	DESCRIPTION

**REVISIONS**

NO.	DATE	DESCRIPTION

**REVISIONS**

NO.	DATE	DESCRIPTION

**REVISIONS**

NO.	DATE	DESCRIPTION

**REVISIONS**

NO.	DATE	DESCRIPTION

**REVISIONS**

NO.	DATE	DESCRIPTION

**REVISIONS**

NO.	DATE	DESCRIPTION

**REVISIONS**

NO.	DATE	DESCRIPTION

**REVISIONS**

NO.	DATE	DESCRIPTION

**REVISIONS**

NO.	DATE	DESCRIPTION

**REVISIONS**

NO.	DATE	DESCRIPTION

**REVISIONS**

NO.	DATE	DESCRIPTION

**REVISIONS**

NO.	DATE	DESCRIPTION

**REVISIONS**

NO.	DATE	DESCRIPTION

**REVISIONS**

NO.	DATE	DESCRIPTION

**REVISIONS**

NO.	DATE	DESCRIPTION

**REVISIONS**

NO.	DATE	DESCRIPTION

**REVISIONS**

NO.	DATE	DESCRIPTION

**REVISIONS**

NO.	DATE	DESCRIPTION

**REVISIONS**

NO.	DATE	DESCRIPTION

**REVISIONS**

NO.	DATE	DESCRIPTION

**REVISIONS**

NO.	DATE	DESCRIPTION
-----	------	-------------

**Gensler**

330 South Figueroa Street  
 Los Angeles, California 90071  
 United States  
 Contact: Christopher Mark Conroy, AIA  
 Tel: 213.237.8778

SATELLITE OFFICE:  
 400 N. Main Street  
 Santa Ana, CA 92701  
 United States  
 Contact: Christopher Mark Conroy, AIA  
 Tel: 951.254.9000  
 Fax: 951.252.9448

**THE FACTOR**

3381 BROADWAY AVENUE  
 BEVERLY HILLS, CA 90210  
 Tel: 310.274.1000  
 Fax: 310.274.4000  
 Contact: Tom Yonemura  
 Tel: 310.272.2332

**TRIMARK**

300 COLLEGE ST.  
 P.O. BOX 2022  
 QUINCY, ILLINOIS 62401  
 Tel: 618.291.8800  
 Fax: 618.291.3800  
 Contact: Michael Hennessey  
 Tel: 618.291.2302

**kpff**

300 SOUTH FLORENCE  
 STREET  
 LOS ANGELES, CA 90007  
 Tel: 213.755.3400  
 STRUCTURAL:  
 Chad A. Strubbe  
 Tel: 213.755.4900  
 CIVIL:  
 Douglas Gordon  
 Tel: 213.418.8200

Date	Description
09/15/21	PKG CD SET
09/01/21	ISSUE FOR PERMITTING
01/06/22	ISSUE FOR CONSTRUCTION

Small Signature



Project Name  
**SHAKE SHACK**

Project Number  
**SHK-21-001**

Description  
**CAPTIVEAIRE DRAWINGS**

Scale  
**NTS**

**M807**

© 2021 Gensler

**ELECTRICAL PACKAGE - AIR HANDLING**

NO.	DATE	REVISION	DESCRIPTION	BY	CHKD.	APP'D.
1	01/06/22	01	ISSUE FOR CONSTRUCTION	MM	MM	MM

**REVISIONS**

NO.	DATE	REVISION	DESCRIPTION
1	01/06/22	01	ISSUE FOR CONSTRUCTION

**SC- Specification:**

The Electrical Package, typically PP, is designed to thermostatically activate the exhaust fans for an exhaust hood whenever elevated temperatures are sensed in the exhaust system. This option will meet the requirements of IMC 507.2.1.1 by providing a thermostat(s) mounted in the duct or hood riser to sense increased exhaust temperatures. The control enclosure may be constructed of stainless steel or painted steel.

Controls shall be listed by ETL (UL 508A). The control enclosure shall be NEMA 1 rated and listed for installation inside of the exhaust hood utility cabinet. The control enclosure may be constructed of stainless steel or painted steel.

Temperature probe(s) located in the duct riser shall be constructed of Stainless Steel.

A room temperature sensor is also provided for field installation in the kitchen space in order to start the fan(s) based on the temperature differential between the room and the exhaust air in the duct, rather than fixed setpoint.

The system is factory pre-set to activate the fans at 10 deg F above the room temperature.

Once the duct temperature reaches the activation point, the exhaust fans will be activated. The controls also provide hysteresis to prevent cycling of the fans after the cooking appliances have been turned off and the heat in the exhaust system is reduced. The hysteresis is factory set 2 degrees and will keep the exhaust running until the temperature falls 2 degrees below the activation set point. A hysteresis timer also exists to keep the fans running for at least 30 min after being activated by the temperature rise.

The activation and hysteresis settings may be field adjusted on the board LCD interface located inside the control enclosure to meet application needs.

The panel is factory configured to shut down supply fans, turn on the exhaust fans and turn off the hood lights in a fire condition.

**SC-21000**

**SC-21000**

**SC-21000**

**TEMPERATURE SENSOR**

**ROOM TEMPERATURE SENSOR**

**ROOM TEMPERATURE SENSOR**

**FIELD WIRING CONNECTIONS**

**FIELD WIRING CONNECTIONS**

**FIELD WIRING CONNECTIONS**

**FIELD WIRING CONNECTIONS**

**FIELD WIRING CONNECTIONS**

**FIELD WIRING CONNECTIONS**

**FIELD WIRING CONNECTIONS**

**FIELD WIRING CONNECTIONS**

**FIELD WIRING CONNECTIONS**

**FIELD WIRING CONNECTIONS**

**FIELD WIRING CONNECTIONS**

**FIELD WIRING CONNECTIONS**

**FIELD WIRING CONNECTIONS**

**FIELD WIRING CONNECTIONS**

**FIELD WIRING CONNECTIONS**

**FIELD WIRING CONNECTIONS**

**FIELD WIRING CONNECTIONS**

**FIELD WIRING CONNECTIONS**

**FIELD WIRING CONNECTIONS**

**FIELD WIRING CONNECTIONS**

**FIELD WIRING CONNECTIONS**

**FIELD WIRING CONNECTIONS**

**FIELD WIRING CONNECTIONS**

**FIELD WIRING CONNECTIONS**

**FIELD WIRING CONNECTIONS**

**FIELD WIRING CONNECTIONS**

**FIELD WIRING CONNECTIONS**

**FIELD WIRING CONNECTIONS**

**FIELD WIRING CONNECTIONS**

**FIELD WIRING CONNECTIONS**

**FIELD WIRING CONNECTIONS**

**FIELD WIRING CONNECTIONS**

**FIELD WIRING CONNECTIONS**

**FIELD WIRING CONNECTIONS**

**FIELD WIRING CONNECTIONS**

**FIELD WIRING CONNECTIONS**

**FIELD WIRING CONNECTIONS**

**FIELD WIRING CONNECTIONS**

**FIELD WIRING CONNECTIONS**

**FIELD WIRING CONNECTIONS**

**FIELD WIRING CONNECTIONS**

**FIELD WIRING CONNECTIONS**

**FIELD WIRING CONNECTIONS**

**FIELD WIRING CONNECTIONS**

**FIELD WIRING CONNECTIONS**

**FIELD WIRING CONNECTIONS**

**FIELD WIRING CONNECTIONS**

**FIELD WIRING CONNECTIONS**

**FIELD WIRING CONNECTIONS**

**FIELD WIRING CONNECTIONS**

**FIELD WIRING CONNECTIONS**

**FIELD WIRING CONNECTIONS**

**FIELD WIRING CONNECTIONS**

**FIELD WIRING CONNECTIONS**

**FIELD WIRING CONNECTIONS**

**FIELD WIRING CONNECTIONS**

**FIELD WIRING CONNECTIONS**

**FIELD WIRING CONNECTIONS**

**FIELD WIRING CONNECTIONS**

**FIELD WIRING CONNECTIONS**

**FIELD WIRING CONNECTIONS**

**FIELD WIRING CONNECTIONS**

**FIELD WIRING CONNECTIONS**

**FIELD WIRING CONNECTIONS**

**FIELD WIRING CONNECTIONS**

**FIELD WIRING CONNECTIONS**

**FIELD WIRING CONNECTIONS**

**FIELD WIRING CONNECTIONS**

**FIELD WIRING CONNECTIONS**

**FIELD WIRING CONNECTIONS**

**FIELD WIRING CONNECTIONS**

**FIELD WIRING CONNECTIONS**

**FIELD WIRING CONNECTIONS**

**FIELD WIRING CONNECTIONS**

**FIELD WIRING CONNECTIONS**

**FIELD WIRING CONNECTIONS**

**FIELD WIRING CONNECTIONS**

**FIELD WIRING CONNECTIONS**

**FIELD WIRING CONNECTIONS**

**FIELD WIRING CONNECTIONS**

**FIELD WIRING CONNECTIONS**

**FIELD WIRING CONNECTIONS**

**FIELD WIRING CONNECTIONS**

**FIELD WIRING CONNECTIONS**

**FIELD WIRING CONNECTIONS**

**FIELD WIRING CONNECTIONS**

**FIELD WIRING CONNECTIONS**

**FIELD WIRING CONNECTIONS**

**FIELD WIRING CONNECTIONS**

**FIELD WIRING CONNECTIONS**

**FIELD WIRING CONNECTIONS**

**FIELD WIRING CONNECTIONS**

**FIELD WIRING CONNECTIONS**

**FIELD WIRING CONNECTIONS**

**FIELD WIRING CONNECTIONS**

**FIELD WIRING CONNECTIONS**

**FIELD WIRING CONNECTIONS**

**FIELD WIRING CONNECTIONS**

**FIELD WIRING CONNECTIONS**

**FIELD WIRING CONNECTIONS**

**FIELD WIRING CONNECTIONS**

**FIELD WIRING CONNECTIONS**

**FIELD WIRING CONNECTIONS**

**FIELD WIRING CONNECTIONS**

**FIELD WIRING CONNECTIONS**

**FIELD WIRING CONNECTIONS**

**FIELD WIRING CONNECTIONS**

**FIELD WIRING CONNECTIONS**

**FIELD WIRING CONNECTIONS**

**FIELD WIRING CONNECTIONS**

**FIELD WIRING CONNECTIONS**

**FIELD WIRING CONNECTIONS**

**FIELD WIRING CONNECTIONS**

**FIELD WIRING CONNECTIONS**

**FIELD WIRING CONNECTIONS**

**FIELD WIRING CONNECTIONS**

**FIELD WIRING CONNECTIONS**

**FIELD WIRING CONNECTIONS**

**FIELD WIRING CONNECTIONS**

**FIELD WIRING CONNECTIONS**

**FIELD WIRING CONNECTIONS**

**FIELD WIRING CONNECTIONS**

**FIELD WIRING CONNECTIONS**

**FIELD WIRING CONNECTIONS**

**FIELD WIRING CONNECTIONS**

**FIELD WIRING CONNECTIONS**

**FIELD WIRING CONNECTIONS**

**FIELD WIRING CONNECTIONS**

**FIELD WIRING CONNECTIONS**

**FIELD WIRING CONNECTIONS**

**FIELD WIRING CONNECTIONS**

**FIELD WIRING CONNECTIONS**

**FIELD WIRING CONNECTIONS**

**FIELD WIRING CONNECTIONS**

**FIELD WIRING CONNECTIONS**

**FIELD WIRING CONNECTIONS**

**FIELD WIRING CONNECTIONS**

**FIELD WIRING CONNECTIONS**

**FIELD WIRING CONNECTIONS**

**FIELD WIRING CONNECTIONS**

**FIELD WIRING CONNECTIONS**

**FIELD WIRING CONNECTIONS**

**FIELD WIRING CONNECTIONS**

**FIELD WIRING CONNECTIONS**

**FIELD WIRING CONNECTIONS**

**FIELD WIRING CONNECTIONS**

**FIELD WIRING CONNECTIONS**

**FIELD WIRING CONNECTIONS**

**FIELD WIRING CONNECTIONS**

**FIELD WIRING CONNECTIONS**

**FIELD WIRING CONNECTIONS**

**FIELD WIRING CONNECTIONS**

**FIELD WIRING CONNECTIONS**

**FIELD WIRING CONNECTIONS**

**FIELD WIRING CONNECTIONS**

**FIELD WIRING CONNECTIONS**

**FIELD WIRING CONNECTIONS**

**FIELD WIRING CONNECTIONS**

**FIELD WIRING CONNECTIONS**

**FIELD WIRING CONNECTIONS**

**FIELD WIRING CONNECTIONS**

**FIELD WIRING CONNECTIONS**

**FIELD WIRING CONNECTIONS**

**FIELD WIRING CONNECTIONS**

**FIELD WIRING CONNECTIONS**

**FIELD WIRING CONNECTIONS**

**FIELD WIRING CONNECTIONS**

**FIELD WIRING CONNECTIONS**

**FIELD WIRING CONNECTIONS**

**FIELD WIRING CONNECTIONS**

**FIELD WIRING CONNECTIONS**

**FIELD WIRING CONNECTIONS**

**FIELD WIRING CONNECTIONS**

**FIELD WIRING CONNECTIONS**

**FIELD WIRING CONNECTIONS**

**FIELD WIRING CONNECTIONS**

**FIELD WIRING CONNECTIONS**

**FIELD WIRING CONNECTIONS**

**FIELD WIRING CONNECTIONS**

**FIELD WIRING CONNECTIONS**

**FIELD WIRING CONNECTIONS**

**FIELD WIRING CONNECTIONS**

**FIELD WIRING CONNECTIONS**

**FIELD WIRING CONNECTIONS**

**FIELD WIRING CONNECTIONS**

**FIELD WIRING CONNECTIONS**

**FIELD WIRING CONNECTIONS**

**FIELD WIRING CONNECTIONS**

**FIELD WIRING CONNECTIONS**

**FIELD WIRING CONNECTIONS**

**FIELD WIRING CONNECTIONS**

**FIELD WIRING CONNECTIONS**

**FIELD WIRING CONNECTIONS**

**FIELD WIRING CONNECTIONS**

**FIELD WIRING CONNECTIONS**

**FIELD WIRING CONNECTIONS**

**FIELD WIRING CONNECTIONS**

**FIELD WIRING CONNECTIONS**

**FIELD WIRING CONNECTIONS**

**FIELD WIRING CONNECTIONS**

**FIELD WIRING CONNECTIONS**

**FIELD WIRING CONNECTIONS**

**FIELD WIRING CONNECTIONS**

**FIELD WIRING CONNECTIONS**

**FIELD WIRING CONNECTIONS**

**FIELD WIRING CONNECTIONS**

**FIELD WIRING CONNECTIONS**

**FIELD WIRING CONNECTIONS**

**FIELD WIRING CONNECTIONS**

**FIELD WIRING CONNECTIONS**

**FIELD WIRING CONNECTIONS**

**FIELD WIRING CONNECTIONS**

**FIELD WIRING CONNECTIONS**

**FIELD WIRING CONNECTIONS**

**FIELD WIRING CONNECTIONS**

**FIELD WIRING CONNECTIONS**

**FIELD WIRING CONNECTIONS**

**FIELD WIRING CONNECTIONS**

**FIELD WIRING CONNECTIONS**

**FIELD WIRING CONNECTIONS**

**FIELD WIRING CONNECTIONS**

**FIELD WIRING CONNECTIONS**

**FIELD WIRING CONNECTIONS**

**FIELD WIRING CONNECTIONS**

**FIELD WIRING CONNECTIONS**

**FIELD WIRING CONNECTIONS**

**FIELD WIRING CONNECTIONS**

**FIELD WIRING CONNECTIONS**

**FIELD WIRING CONNECTIONS**

**FIELD WIRING CONNECTIONS**

**FIELD WIRING CONNECTIONS**

**FIELD WIRING CONNECTIONS**

**FIELD WIRING CONNECTIONS**

**FIELD WIRING CONNECTIONS**

**FIELD WIRING CONNECTIONS**

**FIELD WIRING CONNECTIONS**

**FIELD WIRING CONNECTIONS**

**FIELD WIRING CONNECTIONS**

**FIELD WIRING CONNECTIONS**

**FIELD WIRING CONNECTIONS**

**FIELD WIRING CONNECTIONS**

**FIELD WIRING CONNECTIONS**

**FIELD WIRING CONNECTIONS**

**FIELD WIRING CONNECTIONS**

**FIELD WIRING CONNECTIONS**

**FIELD WIRING CONNECTIONS**

**FIELD WIRING CONNECTIONS**

**FIELD WIRING CONNECTIONS**

**FIELD WIRING CONNECTIONS**

**FIELD WIRING CONNECTIONS**

**FIELD WIRING CONNECTIONS**

**FIELD WIRING CONNECTIONS**

**FIELD WIRING CONNECTIONS**

**FIELD WIRING CONNECTIONS**

**FIELD WIRING CONNECTIONS**

**FIELD WIRING CONNECTIONS**

**FIELD WIRING CONNECTIONS**

**FIELD WIRING CONNECTIONS**

**FIELD WIRING CONNECTIONS**

**FIELD WIRING CONNECTIONS**

**FIELD WIRING CONNECTIONS**

**FIELD WIRING CONNECTIONS**

**FIELD WIRING CONNECTIONS**

**FIELD WIRING CONNECTIONS**

**FIELD WIRING CONNECTIONS**

**FIELD WIRING CONNECTIONS**

**FIELD WIRING CONNECTIONS**

**FIELD WIRING CONNECTIONS**

**FIELD WIRING CONNECTIONS**

**FIELD WIRING CONNECTIONS**

**FIELD WIRING CONNECTIONS**

**FIELD WIRING CONNECTIONS**

**FIELD WIRING CONNECTIONS**

**FIELD WIRING CONNECTIONS**

**FIELD WIRING CONNECTIONS**

**FIELD WIRING CONNECTIONS**

**FIELD WIRING CONNECTIONS**

**FIELD WIRING CONNECTIONS**

**FIELD WIRING CONNECTIONS**

**FIELD WIRING CONNECTIONS**

**FIELD WIRING CONNECTIONS**

**FIELD WIRING CONNECTIONS**

**FIELD WIRING CONNECTIONS**

**FIELD WIRING CONNECTIONS**

**FIELD WIRING CONNECTIONS**

**FIELD WIRING CONNECTIONS**

**FIELD WIRING CONNECTIONS**

**FIELD WIRING CONNECTIONS**

**FIELD WIRING CONNECTIONS**

**FIELD WIRING CONNECTIONS**

**FIELD WIRING CONNECTIONS**

**FIELD WIRING CONNECTIONS**

**FIELD WIRING CONNECTIONS**

**FIELD WIRING CONNECTIONS**

**FIELD WIRING CONNECTIONS**

**FIELD WIRING CONNECTIONS**

**FIELD WIRING CONNECTIONS**

**FIELD WIRING CONNECTIONS**

**FIELD WIRING CONNECTIONS**

**FIELD WIRING CONNECTIONS**

**FIELD WIRING CONNECTIONS**

**FIELD WIRING CONNECTIONS**

**FIELD WIRING CONNECTIONS**

**FIELD WIRING CONNECTIONS**

**FIELD WIRING CONNECTIONS**

**FIELD WIRING CONNECTIONS**

**FIELD WIRING CONNECTIONS**

**FIELD WIRING CONNECTIONS**

**FIELD WIRING CONNECTIONS**

**FIELD WIRING CONNECTIONS**

**FIELD WIRING CONNECTIONS**

**FIELD WIRING CONNECTIONS**

**FIELD WIRING CONNECTIONS**

**FIELD WIRING CONNECTIONS**

**FIELD WIRING CONNECTIONS**

**FIELD WIRING CONNECTIONS**

**FIELD WIRING CONNECTIONS**

**FIELD WIRING CONNECTIONS**

**FIELD WIRING CONNECTIONS**

**FIELD WIRING CONNECTIONS**

**FIELD WIRING CONNECTIONS**

**FIELD WIRING CONNECTIONS**

**FIELD WIRING CONNECTIONS**

**FIELD WIRING CONNECTIONS**

**FIELD WIRING CONNECTIONS**

**FIELD WIRING CONNECTIONS**

**FIELD WIRING CONNECTIONS**

**FIELD**