

Report By:

National TAB
1329 E. KEMPER ROAD
SUITE 4210
CINCINNATI, OH 45246



Report: AHU-31 MRI Evaluation Rpt

Function: Test, Adjust, & Balance

Date: 11/18/2025

Completed By: National TAB

PROJECT

VA Hospital Eval (Indianapolis, IN)

1481 West Tenth Street

Indianapolis, IN 46202

Client

Specialized Engineering Solutions

10360 ELLISON CIR

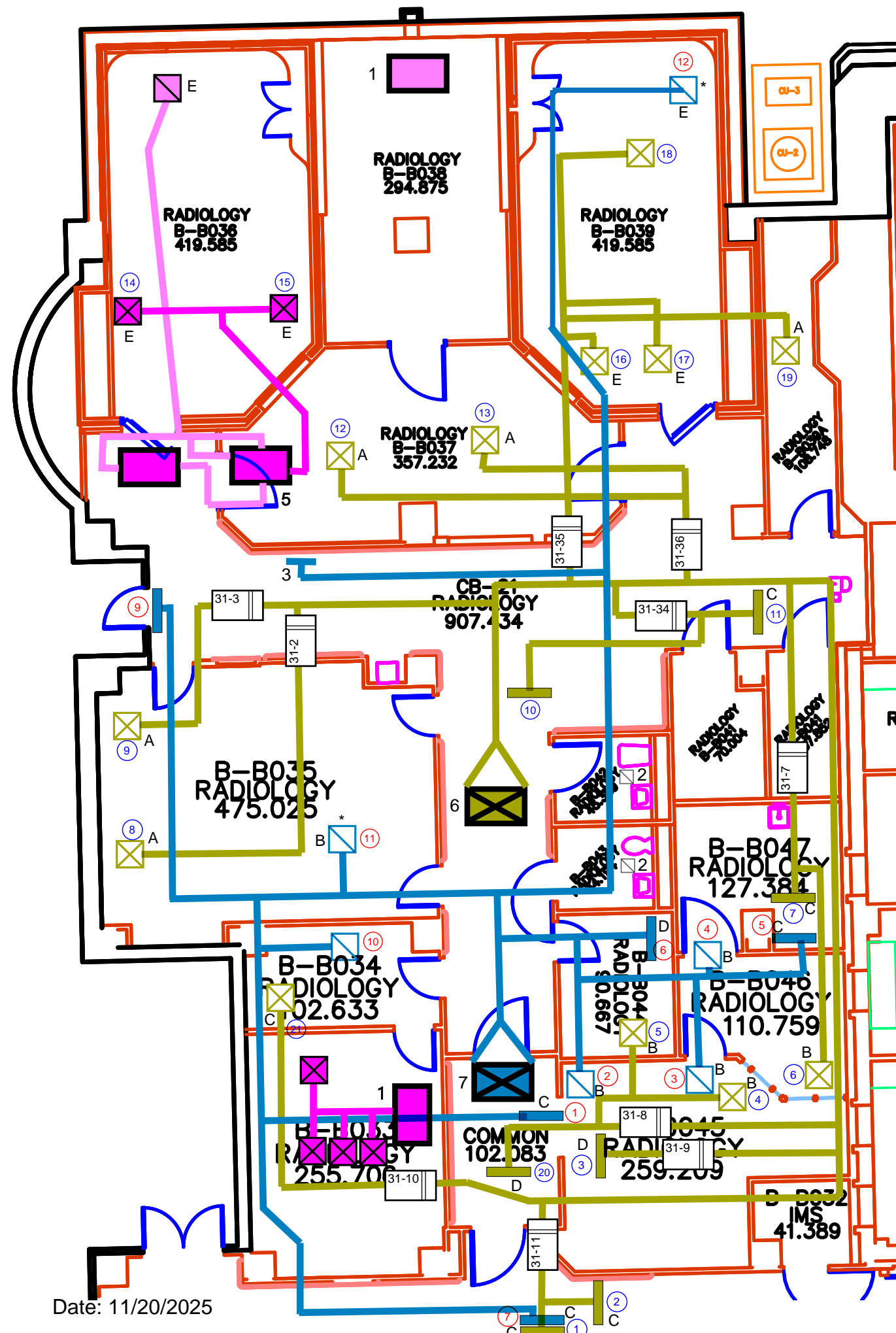
OMAHA, NE 68134

National TAB

Project: VA Hospital Eval (Indianapolis, IN)

Table Of Contents

Section	Page #
HVAC As-Builts MRI Area	3
AHU31-MRI Space Pics	4
AHU-31 Unit Testing	8
AHU31-Controls	10
Controls-VAV systems	11
VAV - Single Duct	12
Return GRD's	13



KEY

- A 24"x24" NON-PERF 4-WAY
- B 24"x24" PERF
- C 48"x4" LINEAR
- D 24"x4" LINEAR
- E 25"x12" PERF
- F 8"x8" PERF
- SUPPLY
- ⊗ SUPPLY
- RETURN
- ⊠ RETURN
- ## VAV

NOTES

1. FLOOR-MOUNTED LIEBERT SYSTEM
2. EXHAUST GRILLES
3. RETURN CAPPED OFF (DESERTED)
4. LIEBERT UNIT
5. AC UNIT # MMD24KNPH
6. SUPPLY TRUNKLINE UP TO AHU-31 ON UPPER ROOF
7. RETURN TRUNKLINE UP TO AHU-31 ON UPPER ROOF

* COULD NOT ACCESS TO READ & FLOW HOODS NOT ALLOWED

MRI (BASEMENT)



New data room with Liebert unit next to room B-3034

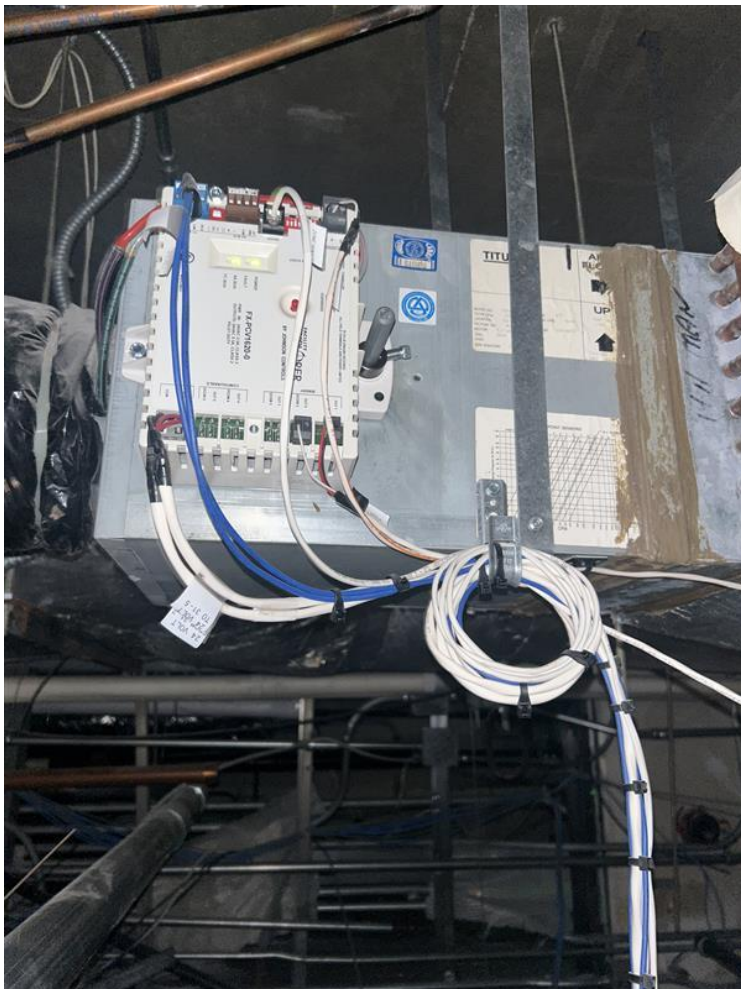




Combo Unit's that serves Radiology room B-3036



Area between the two Radiology Rooms. Now storage area that has a large Liebert system in area.



Typical VAV in MRI Areas



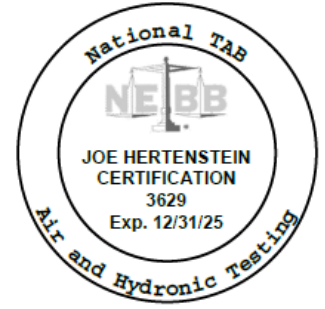
AHU-31 located up on Roof





National TAB

Project: VA Hospital Eval (Indianapolis, IN)
System/Unit: AHU-DUAL FAN



Asset: AHU-31

AREA:Roof - MRI

UNIT DATA - SUPPLY		
	Design	Actual
Manufacturer	NA	YORK
Model Number	NA	NA
Serial Number	-	NA
No. Pre-Filters / Size (1)	-	2/24x24x4
No. Pre-Filters / Size (2)	-	1/24x12x4
No. Pre-Filters / Size (3)	-	
No. Final Filters / Size (1)	-	2/24x24x4
No. Final Filters / Size (2)	-	1/24x12x4
No. Final Filters / Size (3)	-	

MOTOR DATA - SUPPLY	
	Actual
Motor MFG / Frame	BALDOR/184T
Horsepower / RPM	5/1750
Rated Volts / Phase	230/3
Rated Amperage / SF	13.2/1.15

DRIVE DATA - SUPPLY		
	Design	Actual
Motor Sheave Size / Bore	-	
Fan Sheave Size / Bore	-	
Belt CL Distance	-	
No. Belts / Size	-	

TEST DATA - SUPPLY		
	Design	Actual
Total CFM	-	
Fan RPM	-	
VFD Speed	-	
RL Voltage	-	
RL Amperage	-	
Motor B.H.P.	-	

PERFORMANCE DATA - SUPPLY		
	Design	Actual
Static Pressure Stpt	-	
Suction S.P.	-	
Discharge S.P.	-	
Total S.P.	-	
Chilled Water Coil P.D.	-	
Pre Heat Coil P.D.	-	
Final Filters P.D.	-	
Heat Wheel P.D.	-	
Pre-Filters P.D.	-	
Total ESP	-	

UNIT DATA - EXHAUST/RETURN		
	Design	Actual
Manufacturer	-	YORK
Model Number	-	NA
Serial Number	-	NA
No. Pre-Filters / Size (1)	-	
No. Pre-Filters / Size (2)	-	
No. Pre-Filters / Size (3)	-	

MOTOR DATA - EXHAUST/RETURN	
	Actual
Motor MFG / FRAME	MARATHON/143T
Horsepower / RPM	1/1760
Rated Volts / Phase	230/3
Rated Amperage / SF	3.2/1.15

DRIVE DATA - EXHAUST/RETURN		
	Design	Actual
Motor Sheave Size / Bore	-	
Fan Sheave Size / Bore	-	
Belt CL Distance	-	
No. Belts / Size	-	

TEST DATA - EXHAUST/RETURN		
	Design	Actual
Total CFM	-	
Relief CFM	-	
Fan RPM	-	
VFD Speed	-	
RL Voltage	-	
RL Amperage	-	
Motor B.H.P.	-	

PERFORMANCE DATA - EXHAUST/RETURN		
	Design	Actual
Static Pressure Stpt	-	
Suction S.P.	-	
Discharge S.P.	-	
Total S.P.	-	
Heat Wheel P.D.	-	
Pre-Filters P.D.	-	
Total ESP	-	

Notes:

Supply fan replaced 4 years ago. Return fan replaced 10 years ago

No unit info tag

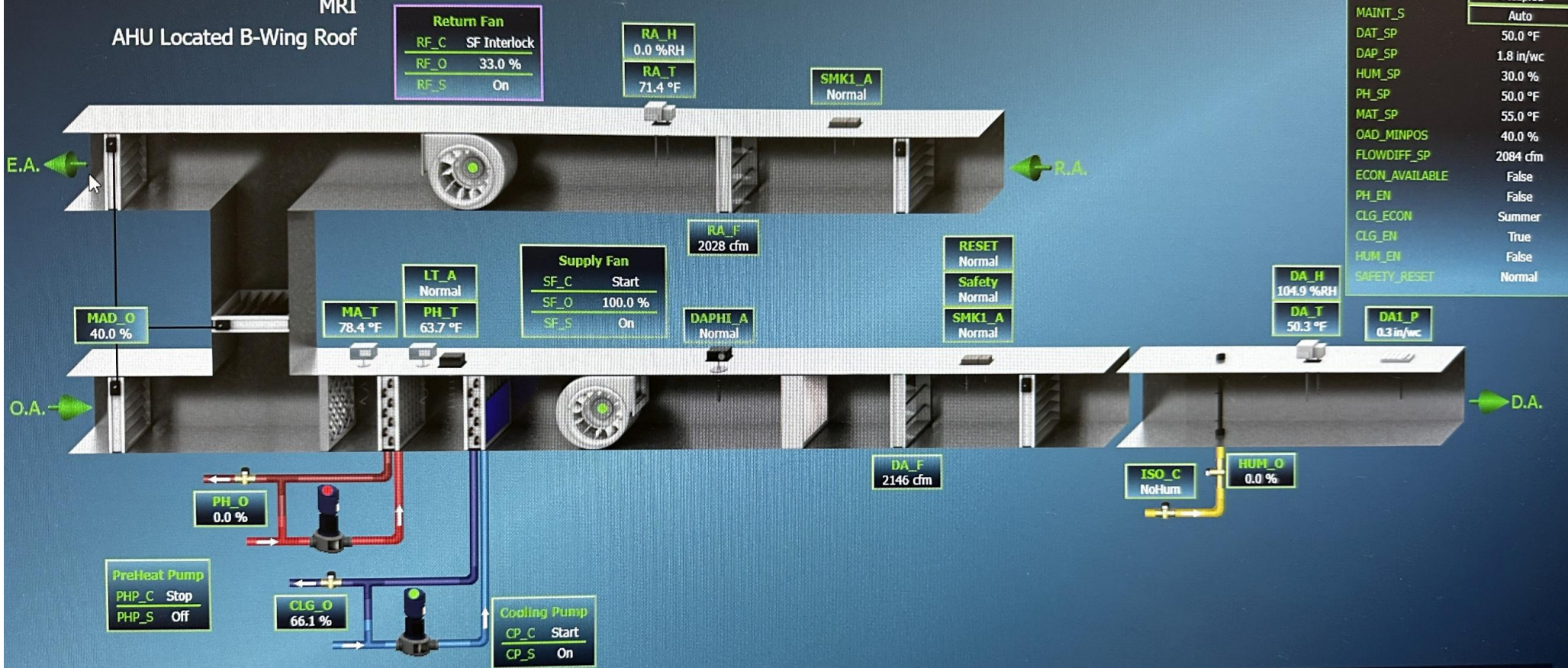
Written By: Aaron Cosby on 09/23/2025

AHU 31

A-B148 Basement

MRI

AHU Located B-Wing Roof



Setpoints/Control	
OCC_SCHEDULE	Occupied
MAINT_S	Auto
DAT_SP	50.0 °F
DAP_SP	1.8 in/wc
PH_SP	30.0 %
MAT_SP	55.0 °F
OAD_MINPOS	40.0 %
FLOWDIFF_SP	2084 cfm
ECON_AVAILABLE	False
PH_EN	False
CLG_ECON	Summer
CLG_EN	True
HUM_EN	False
SAFETY_RESET	Normal

Point Page	Overrides & Notes	Drawings	Add Note
		OAT: 83.6 °F	FX60_01
		OAH: 36.6 %RH	
		WB: 65.1 °F	
		DP: 54.3 °F	
		Enth: 29.9 BTU/lb	

VA Medical Center

Building Automation System

AHU 31 VAVs

Unit #	Room #	ZN-T	ZN-SP
TU31_02	MRI	71.6 °F	71
TU31_03	MRI	72.0 °F	71
TU31_04	Corr CB-15	69.6 °F	65.4 °F
TU31_05	BB039 (MRI)	74.3 °F	68
TU31_06	B-B037	69.6 °F	68.8 °F
TU31_07	B-B041	69.4 °F	66.6 °F
TU31_08	B-B044	68.9 °F	68.6 °F
TU31_09	B-B045	70.5 °F	71.4 °F
TU31_10	B-B033	69.9 °F	65.2 °F
TU31_11	B-B049	74.0 °F	71.2 °F



National TAB

Project: VA Hospital Eval (Indianapolis, IN)

VAV - Single Duct

AHU-31/Roof - MRI

Asset			
Asset Name	Type	Inlet Size	Max CFM
VAV 31-10 1			NA
VAV 31-11 1			486
VAV 31-2 1			292
VAV 31-3 1			47
VAV 31-4 1			53
VAV 31-5 1			657
VAV 31-6 1			342
VAV 31-7 1			151
VAV 31-8 1			389
VAV 31-9 1			293



National TAB

Project: VA Hospital Eval (Indianapolis, IN)

Diffuser Ret/Exh (GRD)

AHU-31/Roof - MRI

Asset			
Asset Name	Location	Type	CFM(1)
B-RGRD1	COMMON		54
B-RGRD2	B-045		55
B-RGRD3	B-045		127
B-RGRD4	B-046		33
B-RGRD5	B-047		90
B-RGRD6	B-044		33
B-RGRD7	COMMON		70
B-RGRD9	CB-21		88
B-RGRD10	B-B033		NA
B-RGRD11	DATA ROOM		NA
B-RGRD12	DATA ROOM		NA
Total			550