

**Report By:**

National TAB  
1329 E. KEMPER ROAD  
SUITE 4210  
CINCINNATI, OH 45246



**Report: AHU-31 MRI Evaluation Rpt**

**Function: Test, Adjust, & Balance**

**Date: 11/18/2025**

**Completed By: National TAB**

# **PROJECT**

## **VA Hospital Eval (Indianapolis, IN)**

1481 West Tenth Street

Indianapolis, IN 46202

### **Client**

Specialized Engineering Solutions

10360 ELLISON CIR

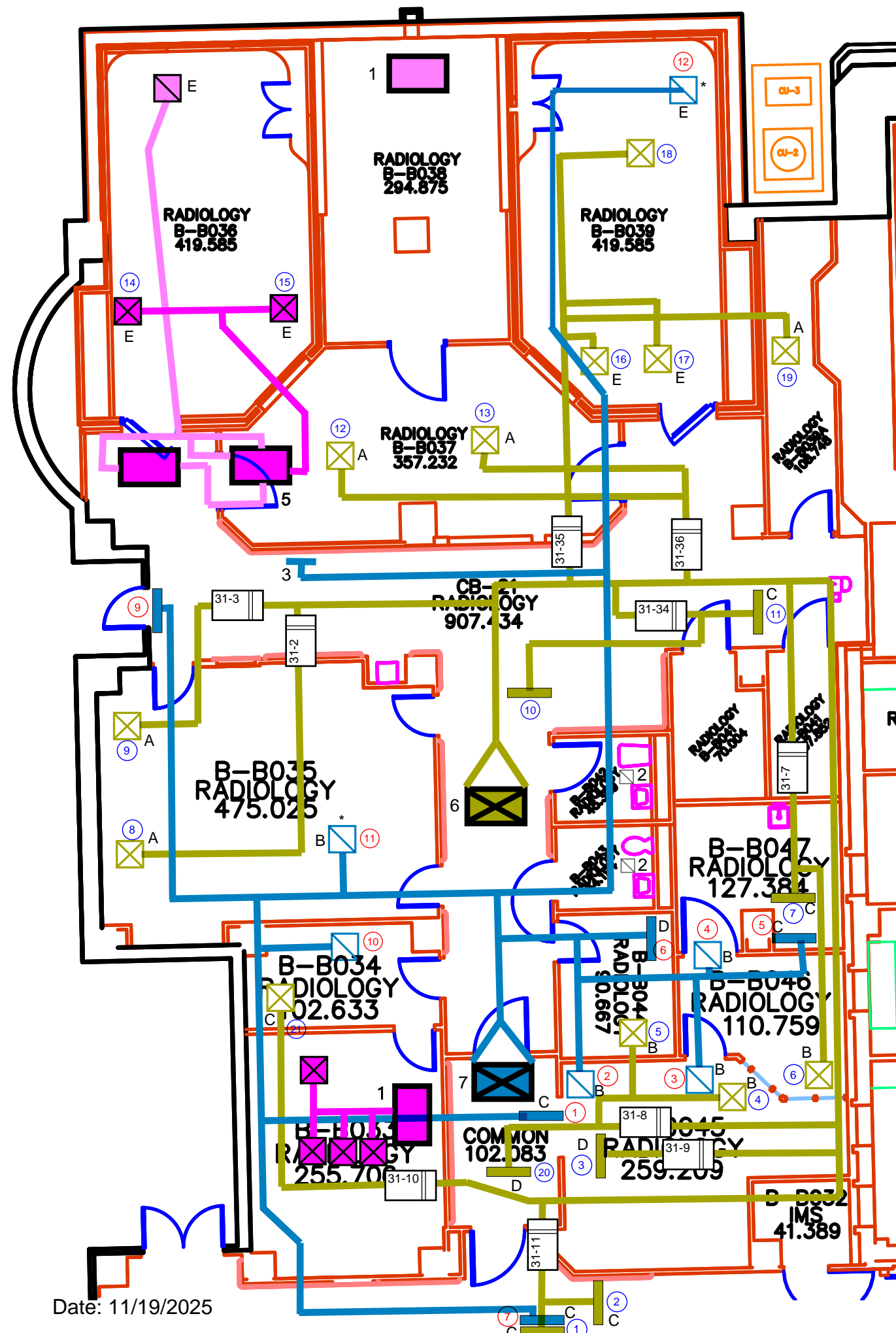
OMAHA, NE 68134

# National TAB

Project: VA Hospital Eval (Indianapolis, IN)

## Table Of Contents

| Section                 | Page # |
|-------------------------|--------|
| HVAC As-Builts MRI Area | 3      |
| AHU31-MRI Space Pics    | 4      |
| AHU-31 Unit Testing     | 8      |
| AHU31-Controls          | 10     |
| Controls-VAV systems    | 11     |
| MRI Vav Systems         | 12     |
| Return GRD's            | 13     |



**KEY**

- A 24"x24" NON-PERF 4-WAY
- B 24"x24" PERF
- C 48"x4" LINEAR
- D 24"x4" LINEAR
- E 25"x12" PERF
- F 8"x8" PERF
- SUPPLY
- ⊗ SUPPLY
- RETURN
- ⊘ RETURN
- ## VAV

**NOTES**

1. FLOOR-MOUNTED LIEBERT SYSTEM
2. EXHAUST GRILLES
3. RETURN CAPPED OFF (DESERTED)
4. LIEBERT UNIT
5. AC UNIT # MMD24KNPH
6. SUPPLY TRUNKLINE UP TO AHU-31 ON UPPER ROOF
7. RETURN TRUNKLINE UP TO AHU-31 ON UPPER ROOF

\* COULD NOT ACCESS TO READ & FLOW HOODS NOT ALLOWED

**MRI (BASEMENT)**



New data room with Liebert unit next to room B-3034

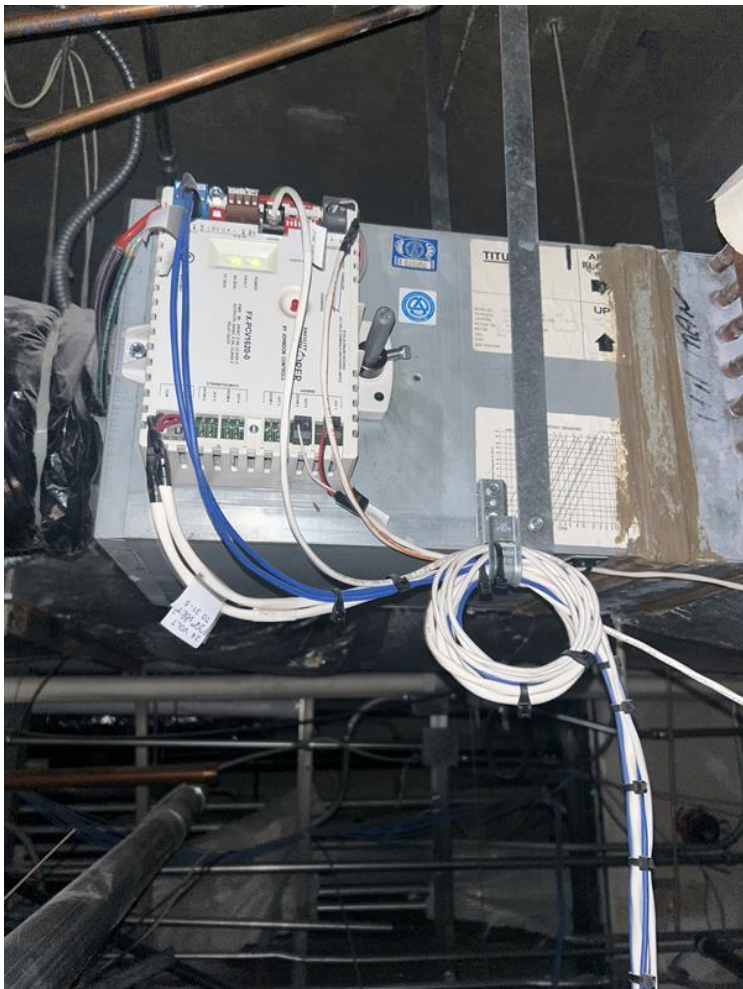




Combo Unit's that serves Radiology room B-3036



Area between the two Radiology Rooms. Now storage area that has a large Liebert system in area.



Typical VAV in MRI Areas



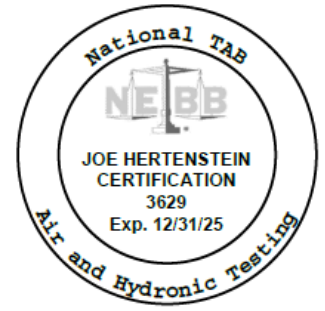
AHU-31 located up on Roof





# National TAB

Project: VA Hospital Eval (Indianapolis, IN)  
System/Unit: AHU-DUAL FAN



Asset: AHU-31

AREA:Roof - MRI

| UNIT DATA - SUPPLY           |        |           |
|------------------------------|--------|-----------|
|                              | Design | Actual    |
| Manufacturer                 | NA     | YORK      |
| Model Number                 | NA     | NA        |
| Serial Number                | -      | NA        |
| No. Pre-Filters / Size (1)   | -      | 2/24x24x4 |
| No. Pre-Filters / Size (2)   | -      | 1/24x12x4 |
| No. Pre-Filters / Size (3)   | -      |           |
| No. Final Filters / Size (1) | -      | 2/24x24x4 |
| No. Final Filters / Size (2) | -      | 1/24x12x4 |
| No. Final Filters / Size (3) | -      |           |

| MOTOR DATA - SUPPLY |             |
|---------------------|-------------|
|                     | Actual      |
| Motor MFG / Frame   | BALDOR/184T |
| Horsepower / RPM    | 5/1750      |
| Rated Volts / Phase | 230/3       |
| Rated Amperage / SF | 13.2/1.15   |

| DRIVE DATA - SUPPLY      |        |        |
|--------------------------|--------|--------|
|                          | Design | Actual |
| Motor Sheave Size / Bore | -      |        |
| Fan Sheave Size / Bore   | -      |        |
| Belt CL Distance         | -      |        |
| No. Belts / Size         | -      |        |

| TEST DATA - SUPPLY |        |        |
|--------------------|--------|--------|
|                    | Design | Actual |
| Total CFM          | -      |        |
| Fan RPM            | -      |        |
| VFD Speed          | -      |        |
| RL Voltage         | -      |        |
| RL Amperage        | -      |        |
| Motor B.H.P.       | -      |        |

| PERFORMANCE DATA - SUPPLY |        |        |
|---------------------------|--------|--------|
|                           | Design | Actual |
| Static Pressure Stpt      | -      |        |
| Suction S.P.              | -      |        |
| Discharge S.P.            | -      |        |
| Total S.P.                | -      |        |
| Chilled Water Coil P.D.   | -      |        |
| Pre Heat Coil P.D.        | -      |        |
| Final Filters P.D.        | -      |        |
| Heat Wheel P.D.           | -      |        |
| Pre-Filters P.D.          | -      |        |
| Total ESP                 | -      |        |

| UNIT DATA - EXHAUST/RETURN |        |        |
|----------------------------|--------|--------|
|                            | Design | Actual |
| Manufacturer               | -      | YORK   |
| Model Number               | -      | NA     |
| Serial Number              | -      | NA     |
| No. Pre-Filters / Size (1) | -      |        |
| No. Pre-Filters / Size (2) | -      |        |
| No. Pre-Filters / Size (3) | -      |        |

| MOTOR DATA - EXHAUST/RETURN |               |
|-----------------------------|---------------|
|                             | Actual        |
| Motor MFG / FRAME           | MARATHON/143T |
| Horsepower / RPM            | 1/1760        |
| Rated Volts / Phase         | 230/3         |
| Rated Amperage / SF         | 3.2/1.15      |

| DRIVE DATA - EXHAUST/RETURN |        |        |
|-----------------------------|--------|--------|
|                             | Design | Actual |
| Motor Sheave Size / Bore    | -      |        |
| Fan Sheave Size / Bore      | -      |        |
| Belt CL Distance            | -      |        |
| No. Belts / Size            | -      |        |

| TEST DATA - EXHAUST/RETURN |        |        |
|----------------------------|--------|--------|
|                            | Design | Actual |
| Total CFM                  | -      |        |
| Relief CFM                 | -      |        |
| Fan RPM                    | -      |        |
| VFD Speed                  | -      |        |
| RL Voltage                 | -      |        |
| RL Amperage                | -      |        |
| Motor B.H.P.               | -      |        |

| PERFORMANCE DATA - EXHAUST/RETURN |        |        |
|-----------------------------------|--------|--------|
|                                   | Design | Actual |
| Static Pressure Stpt              | -      |        |
| Suction S.P.                      | -      |        |
| Discharge S.P.                    | -      |        |
| Total S.P.                        | -      |        |
| Heat Wheel P.D.                   | -      |        |
| Pre-Filters P.D.                  | -      |        |
| Total ESP                         | -      |        |

Notes:  
Supply fan replaced 4 years ago. Return fan replaced 10 years ago  
No unit info tag

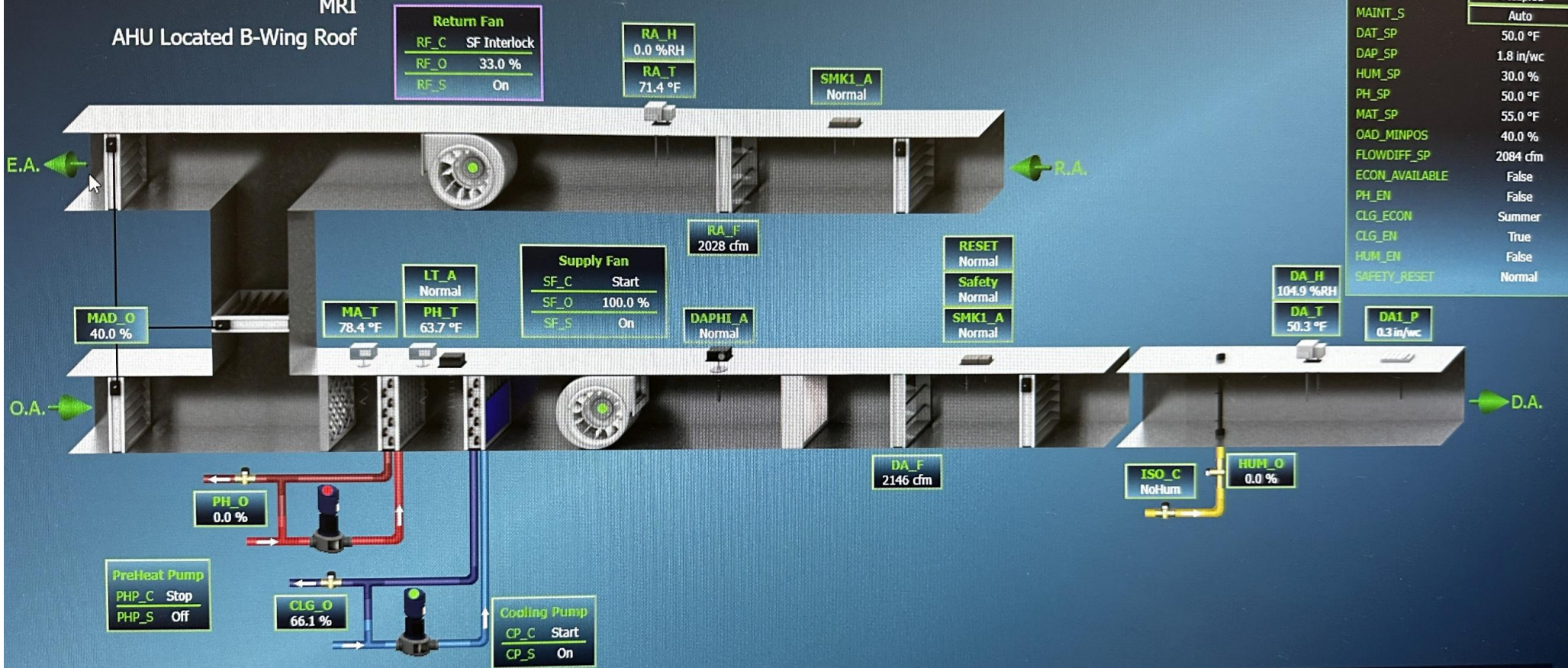
Written By: Aaron Cosby on 09/23/2025

# AHU 31

A-B148 Basement

MRI

AHU Located B-Wing Roof



| Setpoints/Control |           |
|-------------------|-----------|
| OCC_SCHEDULE      | Occupied  |
| MAINT_S           | Auto      |
| DAT_SP            | 50.0 °F   |
| DAP_SP            | 1.8 in/wc |
| HUM_SP            | 30.0 %    |
| PH_SP             | 50.0 °F   |
| MAT_SP            | 55.0 °F   |
| OAD_MINPOS        | 40.0 %    |
| FLOWDIFF_SP       | 2084 cfm  |
| ECON_AVAILABLE    | False     |
| PH_EN             | False     |
| CLG_ECON          | Summer    |
| CLG_EN            | True      |
| HUM_EN            | False     |
| SAFETY_RESET      | Normal    |

| Point Page | Overrides & Notes | Drawings          | Add Note |
|------------|-------------------|-------------------|----------|
|            |                   | OAT: 83.6 °F      | FX60_01  |
|            |                   | OAH: 36.6 %RH     |          |
|            |                   | WB: 65.1 °F       |          |
|            |                   | DP: 54.3 °F       |          |
|            |                   | Enth: 29.9 BTU/lb |          |

# VA Medical Center

## Building Automation System

### AHU 31 VAVs

| Unit #  | Room #      | ZN-T    | ZN-SP   |
|---------|-------------|---------|---------|
| TU31_02 | MRI         | 71.6 °F | 71      |
| TU31_03 | MRI         | 72.0 °F | 71      |
| TU31_04 | Corr CB-15  | 69.6 °F | 65.4 °F |
| TU31_05 | BB039 (MRI) | 74.3 °F | 68      |
| TU31_06 | B-B037      | 69.6 °F | 68.8 °F |
| TU31_07 | B-B041      | 69.4 °F | 66.6 °F |
| TU31_08 | B-B044      | 68.9 °F | 68.6 °F |
| TU31_09 | B-B045      | 70.5 °F | 71.4 °F |
| TU31_10 | B-B033      | 69.9 °F | 65.2 °F |
| TU31_11 | B-B049      | 74.0 °F | 71.2 °F |



# National TAB

Project: VA Hospital Eval (Indianapolis, IN)

## VAV - Single Duct

### AHU-31/Roof - MRI

| Asset       |      |            |         |
|-------------|------|------------|---------|
| Asset Name  | Type | Inlet Size | Max CFM |
| VAV 31-10 1 |      |            | NA      |
| VAV 31-11 1 |      |            | 486     |
| VAV 31-2 1  |      |            | 292     |
| VAV 31-3 1  |      |            | 47      |
| VAV 31-4 1  |      |            | 53      |
| VAV 31-5 1  |      |            | 657     |
| VAV 31-6 1  |      |            | 342     |
| VAV 31-7 1  |      |            | 151     |
| VAV 31-8 1  |      |            | 389     |
| VAV 31-9 1  |      |            | 293     |



# National TAB

Project: VA Hospital Eval (Indianapolis, IN)

## Diffuser Ret/Exh (GRD)

### AHU-31/Roof - MRI

| Asset      |           |      |        |
|------------|-----------|------|--------|
| Asset Name | Location  | Type | CFM(1) |
| B-RGRD1    | COMMON    |      | 54     |
| B-RGRD2    | B-045     |      | 55     |
| B-RGRD3    | B-045     |      | 127    |
| B-RGRD4    | B-046     |      | 33     |
| B-RGRD5    | B-047     |      | 90     |
| B-RGRD6    | B-044     |      | 33     |
| B-RGRD7    | COMMON    |      | 70     |
| B-RGRD9    | CB-21     |      | 88     |
| B-RGRD10   | B-B033    |      | NA     |
| B-RGRD11   | DATA ROOM |      | NA     |
| B-RGRD12   | DATA ROOM |      | NA     |
| Total      |           |      | 550    |