

HOOD INFORMATION - JOB#4651364

HOOD NO	TAG	MODEL	MANUFACTURER	LENGTH	MAX COOKING TEMP	TYPE	APPLIANCE DUTY	DESIGN CFM/FT	TOTAL EXH CFM	EXHAUST PLENUM RISER(S)						TOTAL SUPPLY CFM	HOOD CONSTRUCTION	HOOD CONFIG		
										WIDTH	LENG	HEIGHT	DIA	CFM	VEL			SP	END TO END	ROW
1	HD 1	5412 SND-2	CAPTIVEAIRE	12' 0"	600 DEG	I	HEAVY	206	2472	10'	20'	4'		2472	1780	-1.132'	0	430 SS WHERE EXPOSED	ALONE	ALONE
2	PSP1	166 MISC-PSP	CAPTIVEAIRE	11' 6"	300 DEG	I	N/A	0	0								2050	430 SS WHERE EXPOSED	ALONE	ALONE

HOOD INFORMATION

HOOD NO	TAG	FILTER(S)				LIGHT(S)				UTILITY CABINET(S)				FIRE SYSTEM PIPING	HOOD HANGING WEIGHT	
		TYPE	QTY	HEIGHT	LENGTH	EFFICIENCY @ 7 MICRONS	QTY	TYPE	WIRE GUARD	LOCATION	SIZE	TYPE	SIZE			MODEL #
1	HD 1	CAPTRATE SOLD FILTER	9	16"	16"	85% SEE FILTER SPEC	4	L55 SERIES E26	NO						YES	539 LBS
2	PSP1						0								NO	153 LBS

HOOD OPTIONS

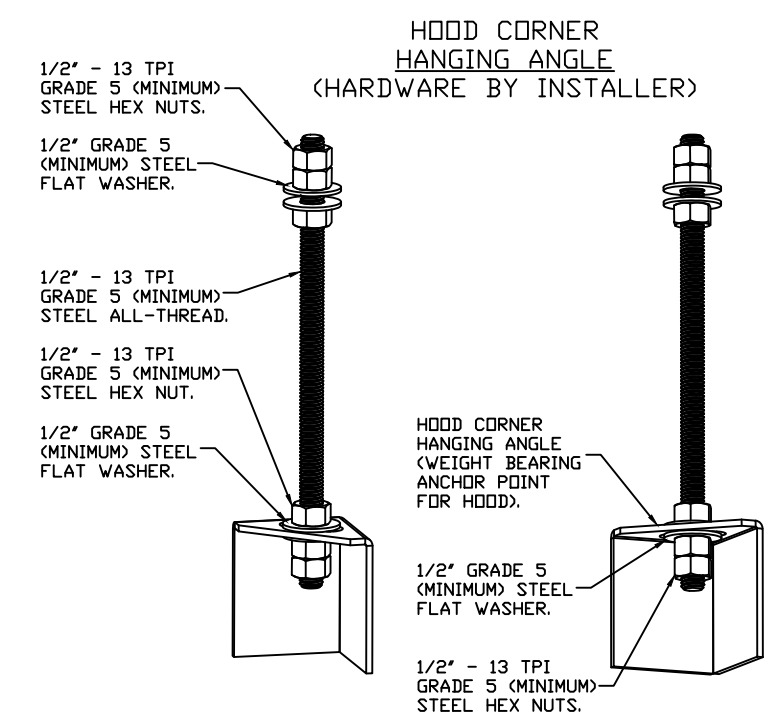
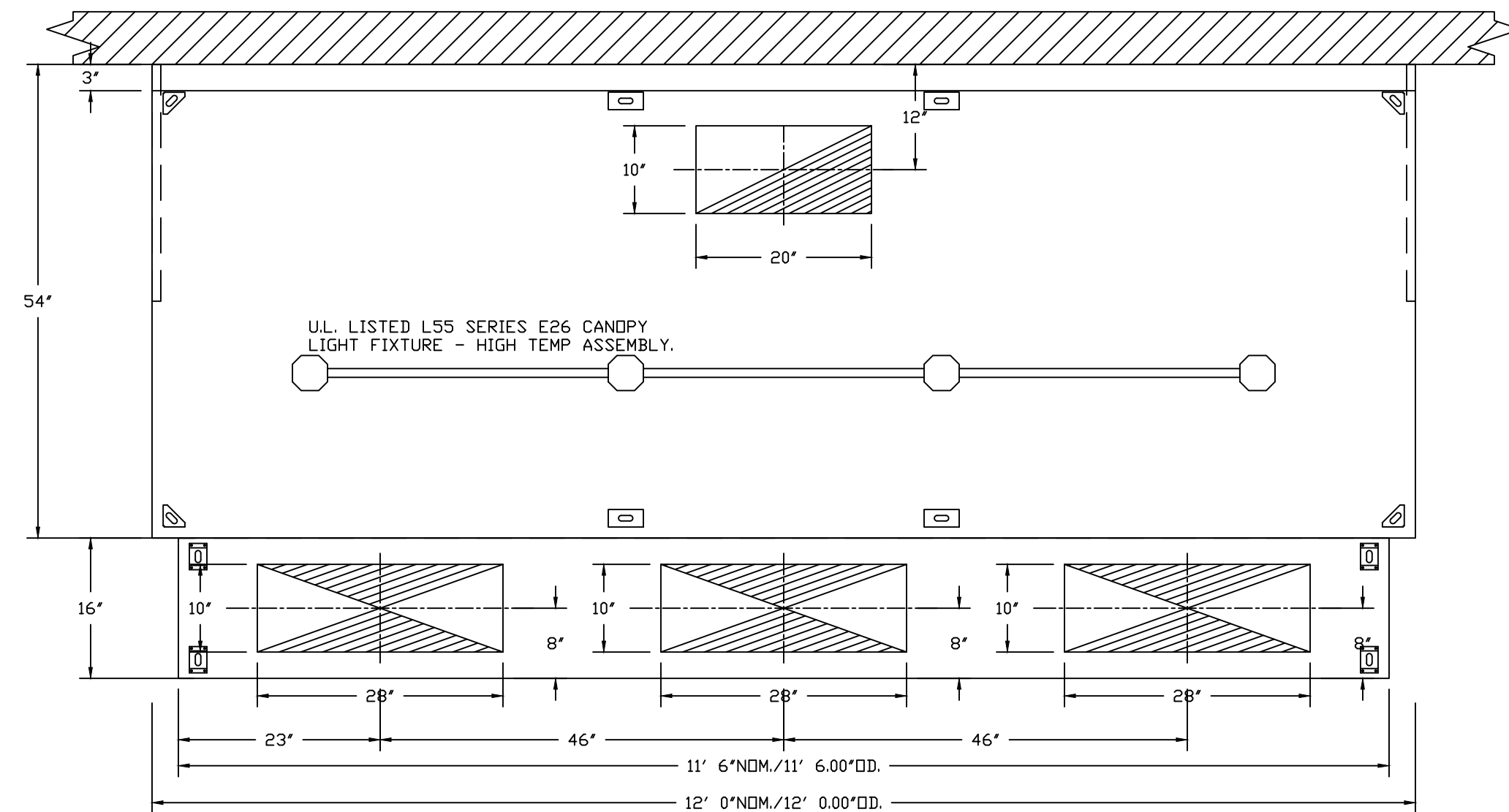
HOOD NO	TAG	OPTION
1	HD 1	FIELD WRAPPER 25.00' HIGH LEFT, RIGHT. WRAPPER CHANNEL - FRONT. LEFT QUARTER END PANEL 27' TOP WIDTH, 0' BOTTOM WIDTH, 27' HIGH 430 SS. RIGHT VERTICAL END PANEL 27' TOP WIDTH, 21' BOTTOM WIDTH, 68' HIGH INSULATED 430 SS.
2	PSP1	FIELD WRAPPER 20.00' HIGH FRONT, LEFT, RIGHT.

PERFORATED SUPPLY PLENUM(S)

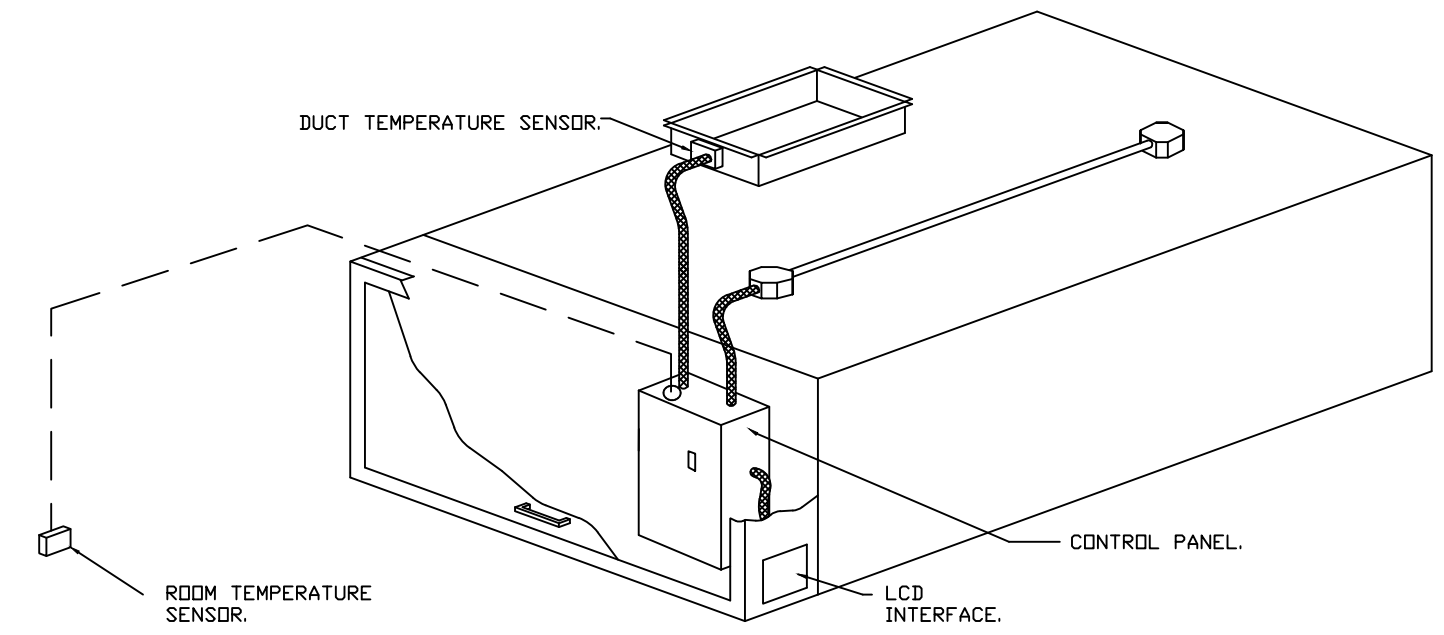
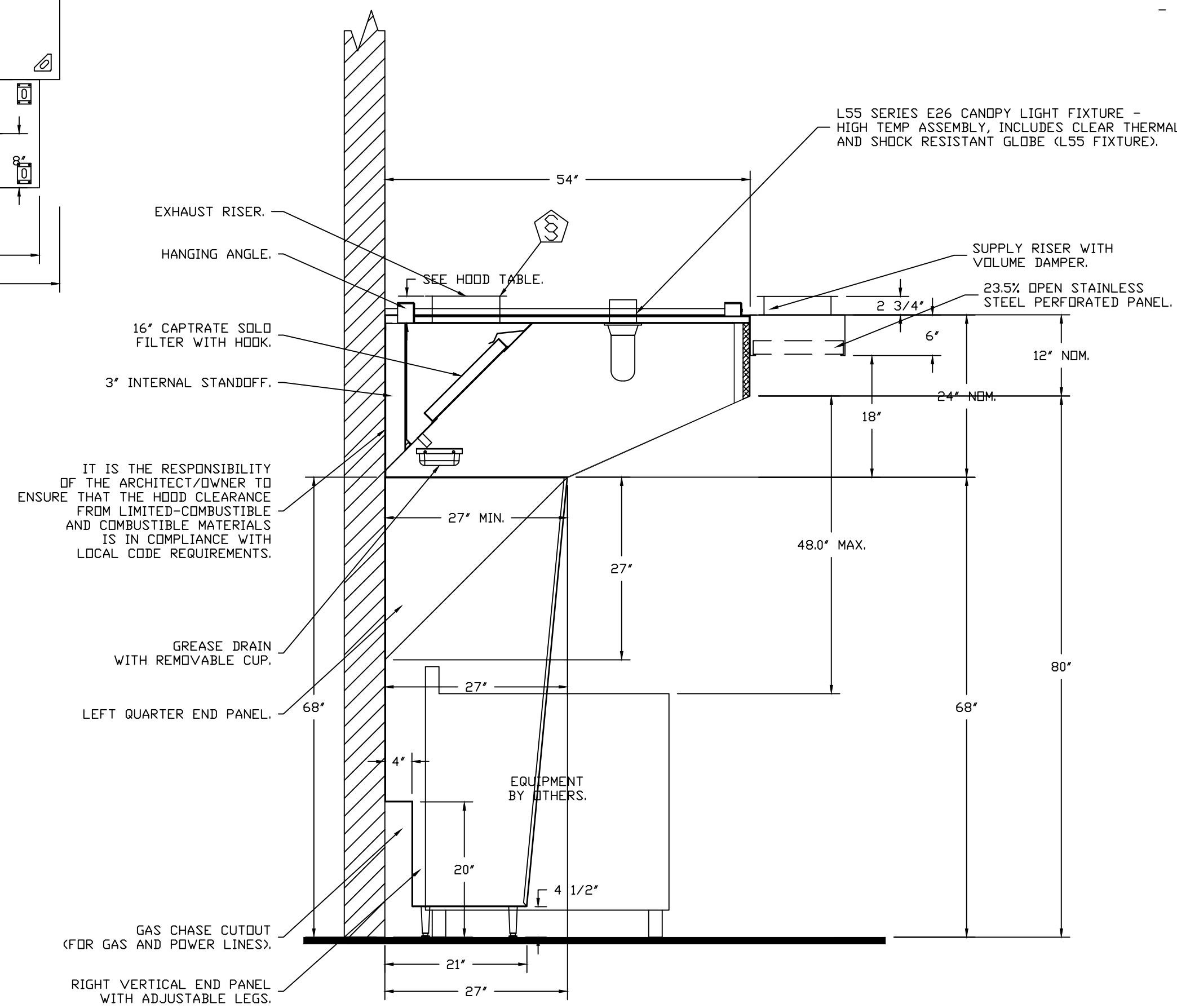
HOOD NO	TAG	PDS	LENGTH	WIDTH	HEIGHT	TYPE	RISER(S)				
							WIDTH	LENG	DIA	CFM	SP
2	PSP1	Front	138"	16"	6"	MUA	10"	28"		682	0.212"
						MUA	10"	28"		682	0.212"
						MUA	10"	28"		682	0.212"

PATENT NUMBERS

AC-PSP (UNITED STATES) - US PATENT 7963830 B2.
AC-PSP WALL (CANADA) - CA PATENT 2820509.
AC-PSP ISLAND (CANADA) - CA PATENT 2520330.
EXHAUST HOODS ND-2/BD-2/SND-2 (CANADA) - CA PATENT 2520435 C.



FOOD SERVICE CONTRACTOR IS RESPONSIBLE TO SUPPLY & INSTALL ALL HOODS, FANS, HOOD CONTROL PANEL, ANSUL SYSTEM, CAPTIVE-AIRE LISTED GREASE DUCT, SUPPLY DUCT, FIRE WRAP, AND INSTALL WALL STAINLESS AROUND HOOD. ALL OTHER TRADES TO REVIEW RESPONSIBILITY MATRIX ON PAGE 1 FOR THEIR RESPONSIBILITY. CONTACT ANDY DALTON WITH C&T DESIGN, INC FOR ADDITIONAL QUESTIONS AT 513-771-2828



SEQUENCE OF OPERATIONS:

- THE HOOD CONTROL PANEL IS CAPABLE OF OPERATING IN ONE OR MORE OF THE FOLLOWING STATES AT ANY GIVEN TIME:
 - AUTOMATIC:** THE SYSTEM OPERATES BASED ON THE DIFFERENTIAL BETWEEN ROOM TEMPERATURE AND THE TEMPERATURE AT THE HOOD CAVITY OR EXHAUST DUCT COLLAR. FANS ACTIVATE AT A CONFIGURABLE TEMPERATURE DIFFERENTIAL THRESHOLD. DEPENDING ON THE JOB CONFIGURATION EACH FAN ZONE CAN BE CONFIGURED AS STATIC OR DYNAMIC. THESE TERMS REFER TO WHETHER A VARIABLE MOTOR (SUCH AS EC MOTORS OR VFD DRIVEN MOTORS) MODULATE WITH TEMPERATURE. IF THE PANEL IS EQUIPPED WITH VARIABLE SPEED FANS AND THE ZONE IS DEFINED AS 'DYNAMIC', THESE WILL MODULATE WITHIN A USER-DEFINED RANGE BASED ON THE TEMPERATURE DIFFERENTIAL. PANELS EQUIPPED WITH VARIABLE SPEED FANS AND A FAN ZONE DEFINED AS 'STATIC', FANS WILL RUN AT A SET SPEED CALCULATED FOR THE DRIVE. DEMAND CONTROL VENTILATION SYSTEMS ARE CAPABLE OF MODULATING EXHAUST AND MAKE UP AIR FAN SPEEDS PER THE REQUIREMENTS OUTLINED IN IECC 403.2.8.
 - MANUAL:** THE SYSTEM OPERATES BASED ON HUMAN INPUT FROM AN HMI.
 - SCHEDULE:** A WEEKLY SCHEDULE CAN BE SET TO RUN FANS FOR A SPECIFIED PERIOD THROUGHOUT THE DAY. THERE ARE THREE OCCUPIED TIMES PER DAY TO ALLOW FOR THE USER TO SET UP A TIME THAT IS SUITABLE TO THEIR NEEDS. ANY TIME THAT IS WITHIN THE DEFINED OCCUPIED TIME, THE SYSTEM WILL RUN AT MODULATION MODE AND FOLLOW THE FAN PROCEDURE ALGORITHM BASED ON TEMPERATURE DURING THIS TIME. DURING UNOCCUPIED TIME, THE SYSTEM WILL HAVE AN EXTRA OFFSET TO PREVENT UNINTENDED ACTIVATION OF THE SYSTEM DURING A TIME WHERE THE SYSTEM IS NOT BEING OCCUPIED.
 - OTHER:** THE SYSTEM OPERATES BASED ON THE INPUT FROM AN EXTERNAL SOURCE (DDC, BMS OR HARD-WIRED INTERLOCK).
 - FIRE:** UPON ACTIVATION OF THE HOOD FIRE SUPPRESSION SYSTEM, THE EXHAUST FAN WILL COME ON OR CONTINUE TO RUN, THE HOOD MAKEUP AIR WILL SHUTDOWN, AND A SIGNAL WILL BE SENT FOR ACTIVATING THE SHUNT TRIP BREAKER PROVIDED BY THE ELECTRICIAN. FUEL GAS WILL SHUT OFF VIA A MECHANICAL/ELECTRICAL GAS VALVE ACTUATED BY THE HOOD FIRE SUPPRESSION SYSTEM.

SPECIFICATION: CAPTRATE® GREASE-STOP® SOLD FILTER

THE CAPTRATE GREASE-STOP SOLD FILTER IS A SINGLE-STAGE FILTER FEATURING A UNIQUE S-BAFFLE DESIGN IN CONJUNCTION WITH A SLOTTED REAR BAFFLE DESIGN, TO DELIVER EXCEPTIONAL FILTRATION EFFICIENCY.

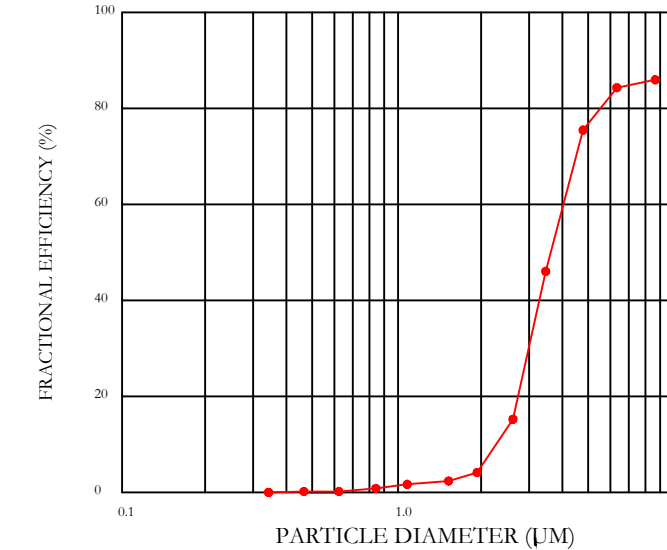
FILTER IS STAINLESS STEEL CONSTRUCTION, AND SIZED TO FIT INTO STANDARD 2-INCH DEEP HOOD CHANNEL(S).

UNITS SHALL INCLUDE STAINLESS STEEL HANDLES AND A FASTENING DEVICE TO SECURE THE TWO COMPONENTS WHEN ASSEMBLED.

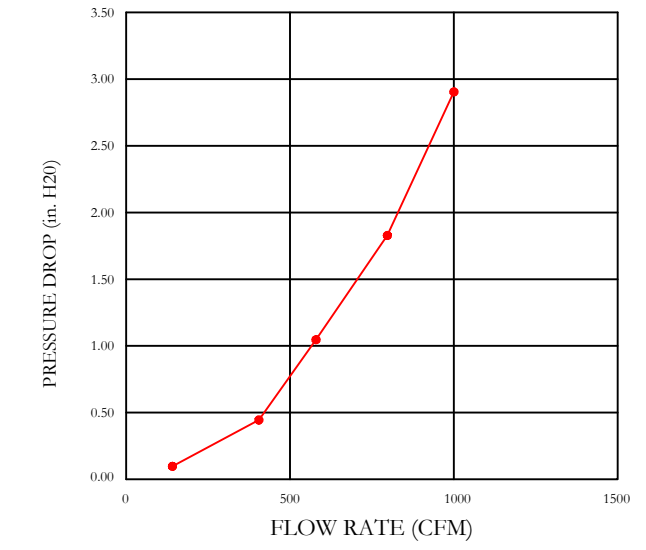
GREASE EXTRACTION EFFICIENCY PERFORMANCE SHALL REMOVE AT LEAST 75% OF GREASE PARTICLES FIVE MICRONS IN SIZE, AND 85% GREASE PARTICLES SEVEN MICRONS IN SIZE AND LARGER, WITH A CORRESPONDING PRESSURE DROP NOT TO EXCEED 1.0 INCHES OF WATER GAUGE.

THE CAPTRATE GREASE-STOP SOLD WAS TESTED TO ASTM STANDARD ASTM F2519-05. MANUFACTURER APPROVED FOR USE IN SOLID FUEL APPLICATIONS AS A SPARK ARRESTER.

EFFICIENCY VS. PARTICLE DIAMETER



PRESSURE DROP VS. FLOW RATE



CAPTRATE FILTERS ARE BUILT IN COMPLIANCE WITH:
NFA #96.
NSF STANDARD #2.
UL STANDARD #1046.
INT. MECH. CODE (IMC).
ULC-S649.



CAPTIVE-AIRE HOODS ARE BUILT IN COMPLIANCE WITH UL 710 AND NFPA 96 AND ARE RECOGNIZED BY ONE OR MORE OF THE FOLLOWING:
ETL SANITATION LISTED
ETL LISTED FILE# 3054804-001

HOOD SYSTEM IS FABRICATED & DESIGNED PER UL-710 STANDARDS

REVISIONS

DESCRIPTION	DATE

CAPTIVE-AIRE

Air Solutions

1329 East Kemper Rd., Ste. 4210, Cincinnati, OH, 45246 PHONE: (513) 860-5555 EMAIL: reg12@captivaire.com

Avril-Bleh Meat Market
33 E Court St,
Cincinnati, OH, 45202

DATE: 1/18/2022
DWG.#: 4651364
DRAWN BY: jcirilli
SCALE: 3/4" = 1'-0"
MASTER DRAWING

SHEET NO. 1

EXHAUST FAN INFORMATION - JOB#4651364

FAN UNIT NO	TAG	QTY	FAN UNIT MODEL #	MANUFACTURER	CFM	ESP	RPM	MOTOR ENCL	HP	BHP	PHASE	VOLT	FLA	DISCHARGE VELOCITY	WEIGHT (LBS)	SDNES
1	KEF 1	1	USB118DD-RM	CAPTIVEAIRE	2472	2.000	1335	DDP,PREMIUM	3.000	1.3200	3	208	9.5	1267 FPM	404	19.7

MUA FAN INFORMATION - JOB#4651364

FAN UNIT NO	TAG	QTY	FAN UNIT MODEL #	BLOWER	HOUSING	MIN CFM	DESIGN CFM	ESP	RPM	MOTOR ENCL	HP	BHP	PHASE	VOLT	FLA	MCA	MOCF	WEIGHT (LBS)	SDNES
2	KMUA	1	A1-D.250-15D	15MF-1-MOD	A1-D.250	1000	2050	0.550	2176	DDP,PREMIUM	3.000	1.6120	3	208	8.6	10.8A	15A	473	23

GAS FIRED MAKE-UP AIR UNIT(S)

FAN UNIT NO	TAG	INPUT BTUs	OUTPUT BTUs	TEMP RISE	REQUIRED INPUT GAS PRESSURE	GAS TYPE	BURNER EFFICIENCY(%)
2	KMUA	146911	135158	63°F	7 IN. W.C. - 14 IN. W.C.	NATURAL	92

FAN OPTIONS

FAN UNIT NO	TAG	QTY	DESCRIPTION
1	KEF 1	1	UTILITY SET GREASE CUP
		1	B118 - 24" DISCHARGE EXTENSION
		1	B1 - DISCHARGE ORIENTATION VERTICAL UPPER LEFT - CW INLET SIDE
		1	B118 - INLET CONNECTION STANDARD 20" FLANGED GREASE DUCT
		1	UTILITY SET - SPRING VIBRATION ISOLATORS - B118 / EQUIVALENT SIZED UTILITY SET - INDDOR/OUTDOOR USE
		1	2 YEAR PARTS WARRANTY
2	KMUA	1	MOTORIZED BACKDRAFT DAMPER FOR A1-D HOUSING - MEETS AMCA CLASS 1A RATING
		1	LOW FIRE START
		1	INLET PRESSURE GAUGE, 0-35"
		1	MANIFOLD PRESSURE GAUGE, -5 TO 15" WC
		1	SEPARATE 120V WIRING PACKAGE (REQUIRED AND USED ONLY FOR DCV DR PREWIRE WITH VFD) - THREE PHASE ONLY
1	2 YEAR PARTS WARRANTY		

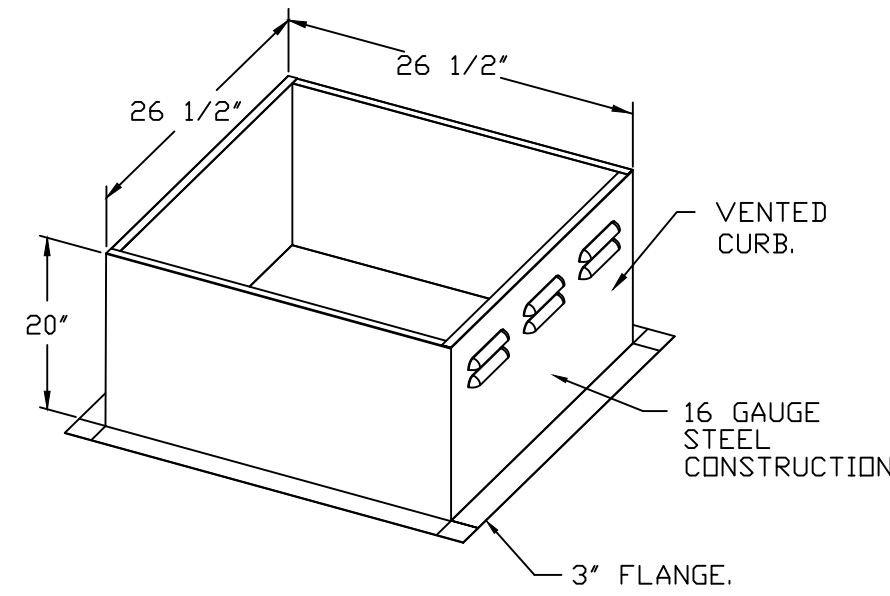
FAN ACCESSORIES

FAN UNIT NO	TAG	EXHAUST			SUPPLY			
		GREASE CUP	GRAVITY DAMPER	WALL MOUNT	SIDE DISCHARGE	GRAVITY DAMPER	MOTORIZED DAMPER	WALL MOUNT
1	KEF 1	YES						
2	KMUA				YES		YES	

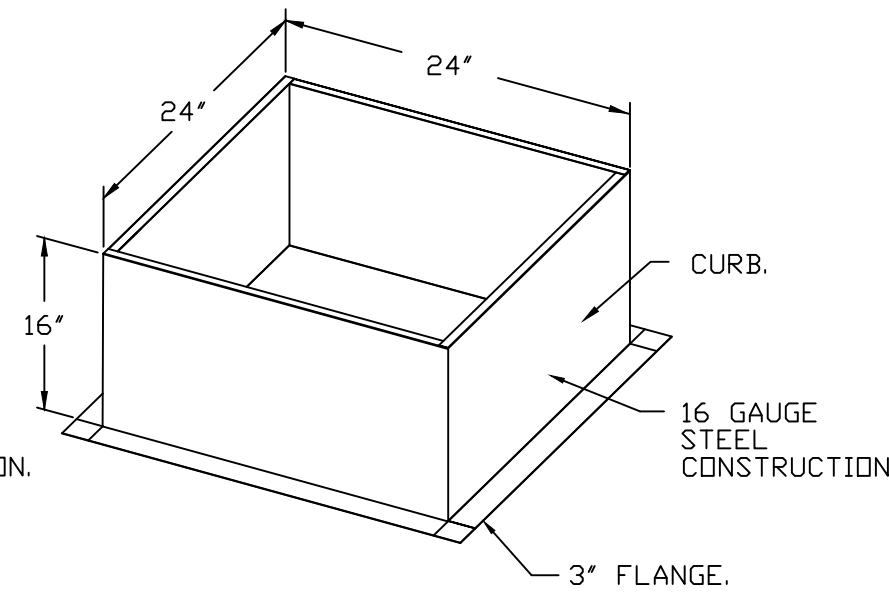
CURB ASSEMBLIES

NO	DN FAN	TAG	WEIGHT	ITEM	SIZE
1	# 1	KEF 1	25 LBS	RAIL	4.000"W X 48.000"L X 14.500"H ALONG WIDTH, RIGHT COMES AS A SET OF 2.
2	# 2	KMUA	63 LBS	CURB	21.000"W X 71.000"L X 16.000"H ALONG WIDTH, RIGHT INSULATED.
3		SHAFT-EXH	61 LBS	CURB	26.500"W X 26.500"L X 20.000"H ALONG LENGTH, RIGHT VENTED 16 GAUGE.
4		SHAFT-SUPPLY	51 LBS	CURB	24.000"W X 24.000"L X 16.000"H ALONG LENGTH, RIGHT INSULATED 16 GAUGE.

CURB #3 (SHAFT-EXH) CRB26.5X20E



CURB #4 (SHAFT-SUPPLY) CRB24.0X16H

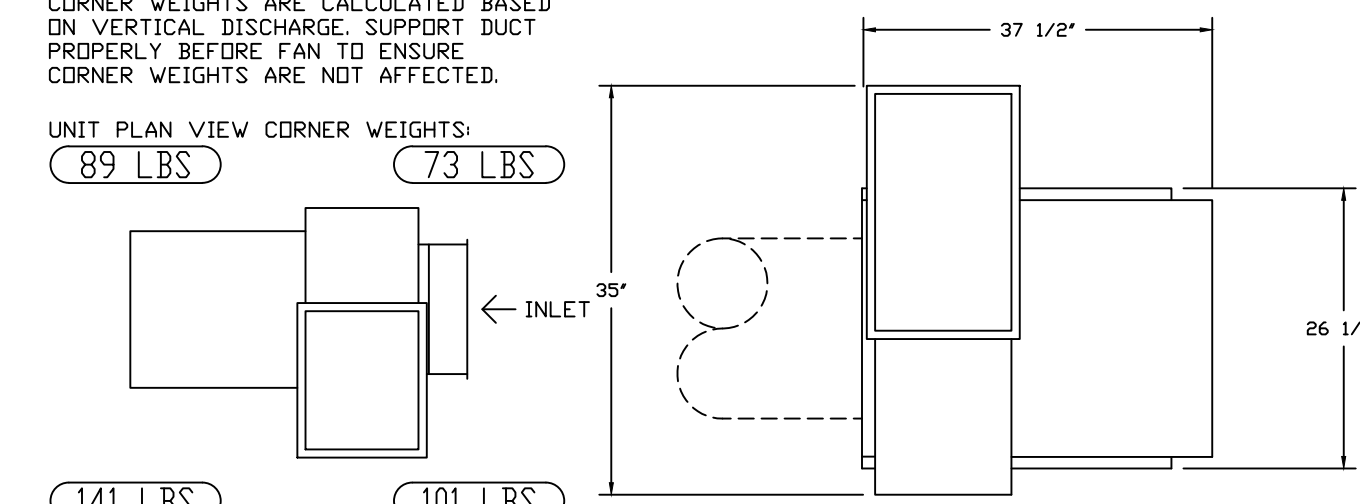


FOOD SERVICE CONTRACTOR IS RESPONSIBLE TO SUPPLY & INSTALL ALL HOODS, FANS, HOOD CONTROL PANEL, ANSUL SYSTEM, CAPTIVE-AIRE LISTED GREASE DUCT, SUPPLY DUCT, FIRE WRAP, AND INSTALL WALL STAINLESS AROUND HOOD. ALL OTHER TRADES TO REVIEW RESPONSIBILITY MATRIX ON PAGE 1 FOR THEIR RESPONSIBILITY. CONTACT ANDY DALTON WITH C&T DESIGN, INC FOR ADDITIONAL QUESTIONS AT 513-771-2828

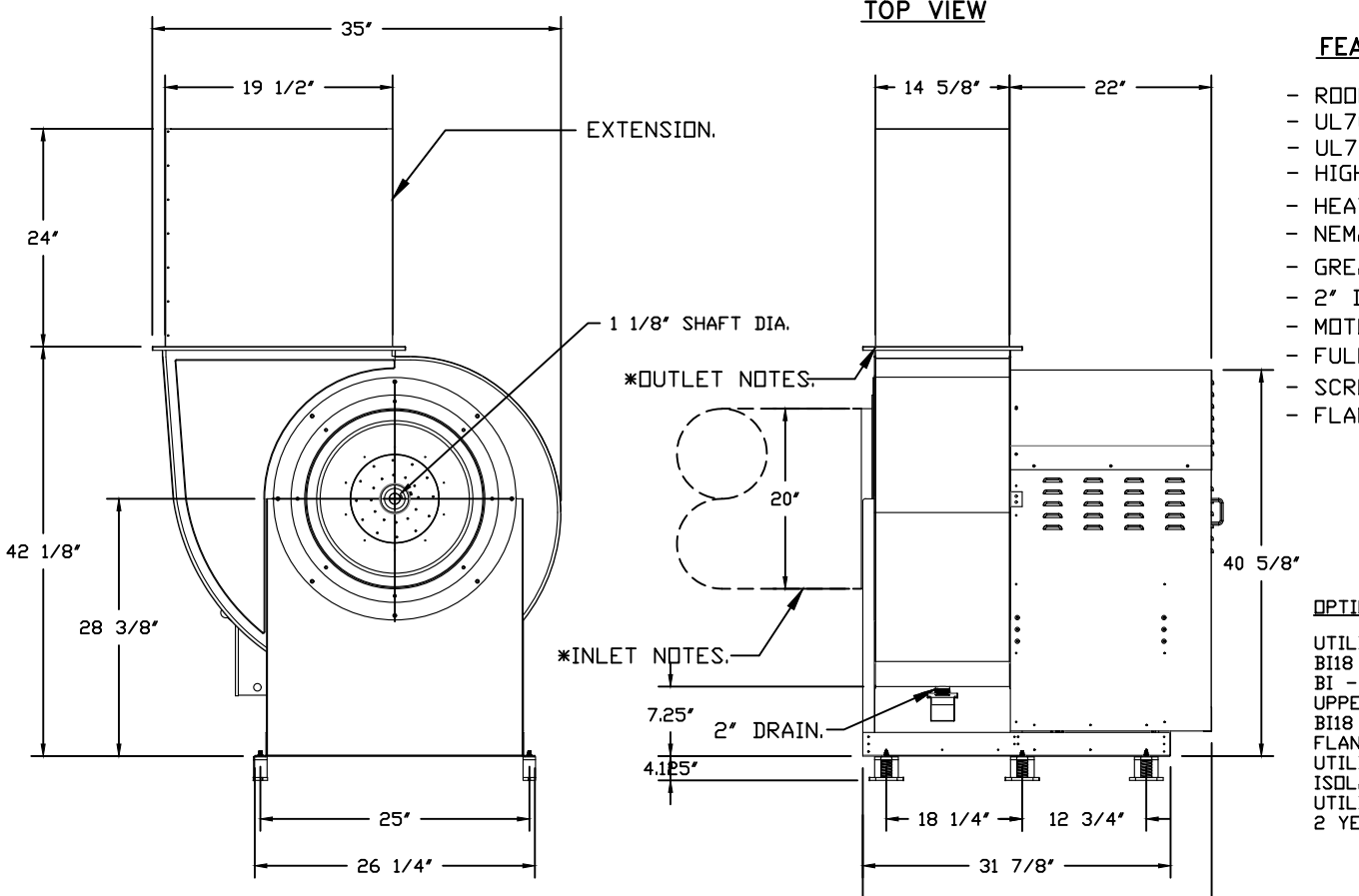
FAN #1 USB118DD-RM - EXHAUST FAN (KEF 1)

CORNER WEIGHTS ARE CALCULATED BASED ON VERTICAL DISCHARGE SUPPORT DUCT PROPERLY BEFORE FAN TO ENSURE CORNER WEIGHTS ARE NOT AFFECTED.

UNIT PLAN VIEW CORNER WEIGHTS:
89 LBS 73 LBS



141 LBS 101 LBS



FEATURES:

- ROOF MOUNTED FANS.
- UL705.
- UL762 AND ULC-S645 (RESTAURANT MODEL).
- HIGH HEAT OPERATION DIRECT DRIVE 350°F (176°C).
- HEAT SLINGER.
- NEMA 3R SAFETY DISCONNECT SWITCH.
- GREASE CLASSIFICATION TESTING.
- 2" DRAIN.
- MOTOR WEATHER COVER.
- FULLY SEALED SCROLL HOUSING.
- SCROLL ACCESS DOOR.
- FLANGE 1 1/4".

OPTIONS:

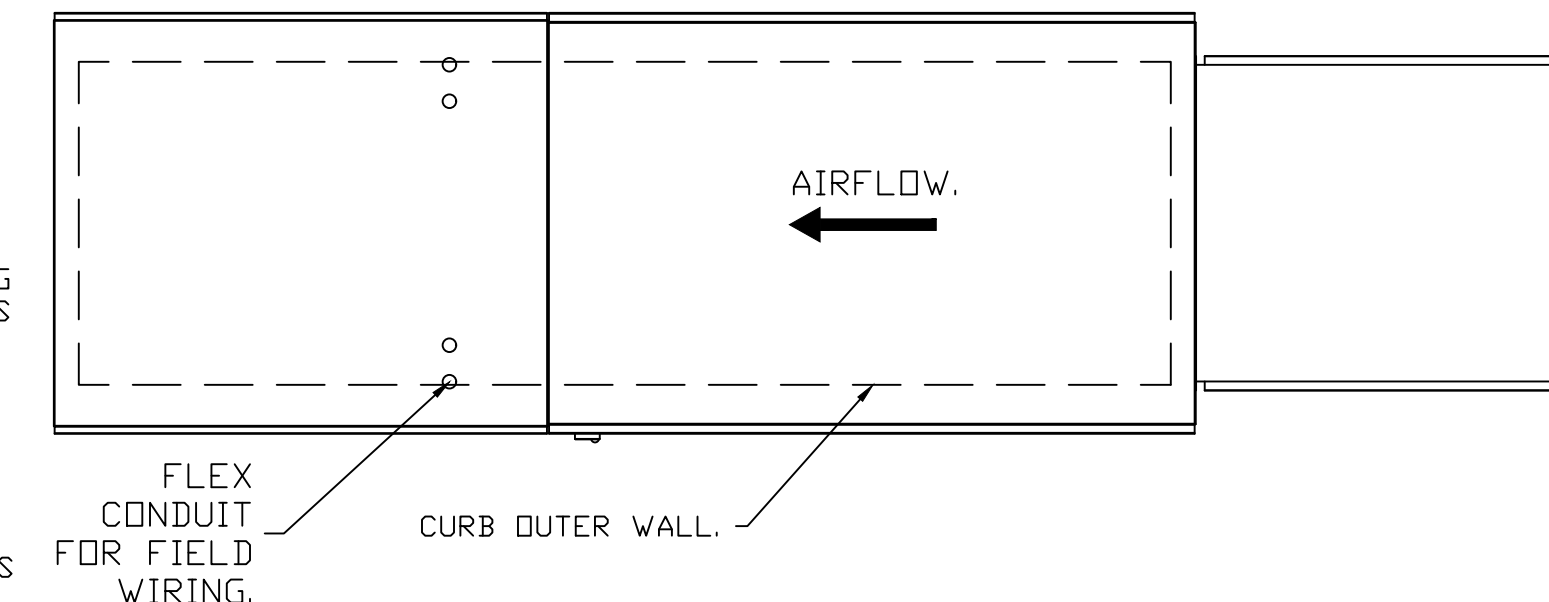
- UTILITY SET GREASE CUP
- B118 - 24" DISCHARGE EXTENSION
- B1 - DISCHARGE ORIENTATION VERTICAL UPPER LEFT - CW INLET SIDE
- B118 - INLET CONNECTION STANDARD 20" FLANGED GREASE DUCT.
- UTILITY SET - SPRING VIBRATION ISOLATORS - B118 / EQUIVALENT SIZED UTILITY SET - INDDOR/OUTDOOR USE.
- 2 YEAR PARTS WARRANTY.

* INLET/OUTLET NOTES:
LENGTH OF THE STRAIGHT DUCT ON THE INLET AND OUTLET TO BE 3 TIMES THE EQUIVALENT DUCT DIAMETER BEFORE CONNECTING TO ANY FITTINGS SUCH AS ELBOWS TO AVOID SYSTEM EFFECT.

NORMAL TEMPERATURE TEST DIRECT DRIVE EXHAUST FAN MUST OPERATE CONTINUOUSLY WHILE EXHAUSTING AIR AT 350°F (176°C) UNTIL ALL FAN PARTS HAVE REACHED THERMAL EQUILIBRIUM, AND WITHOUT ANY DEGRADATING EFFECTS TO THE FAN WHICH WOULD CAUSE UNSAFE OPERATION.

SUPPLY SIDE HEATER INFORMATION:

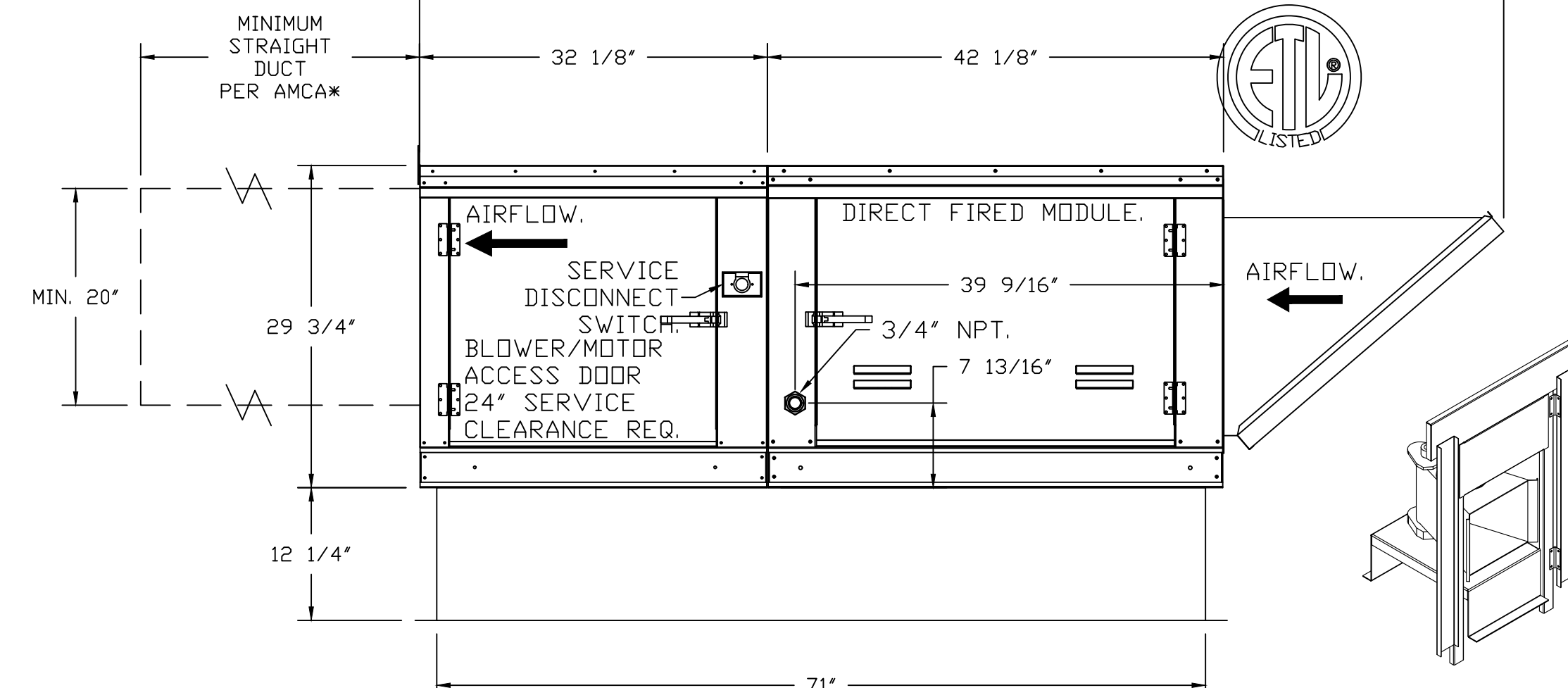
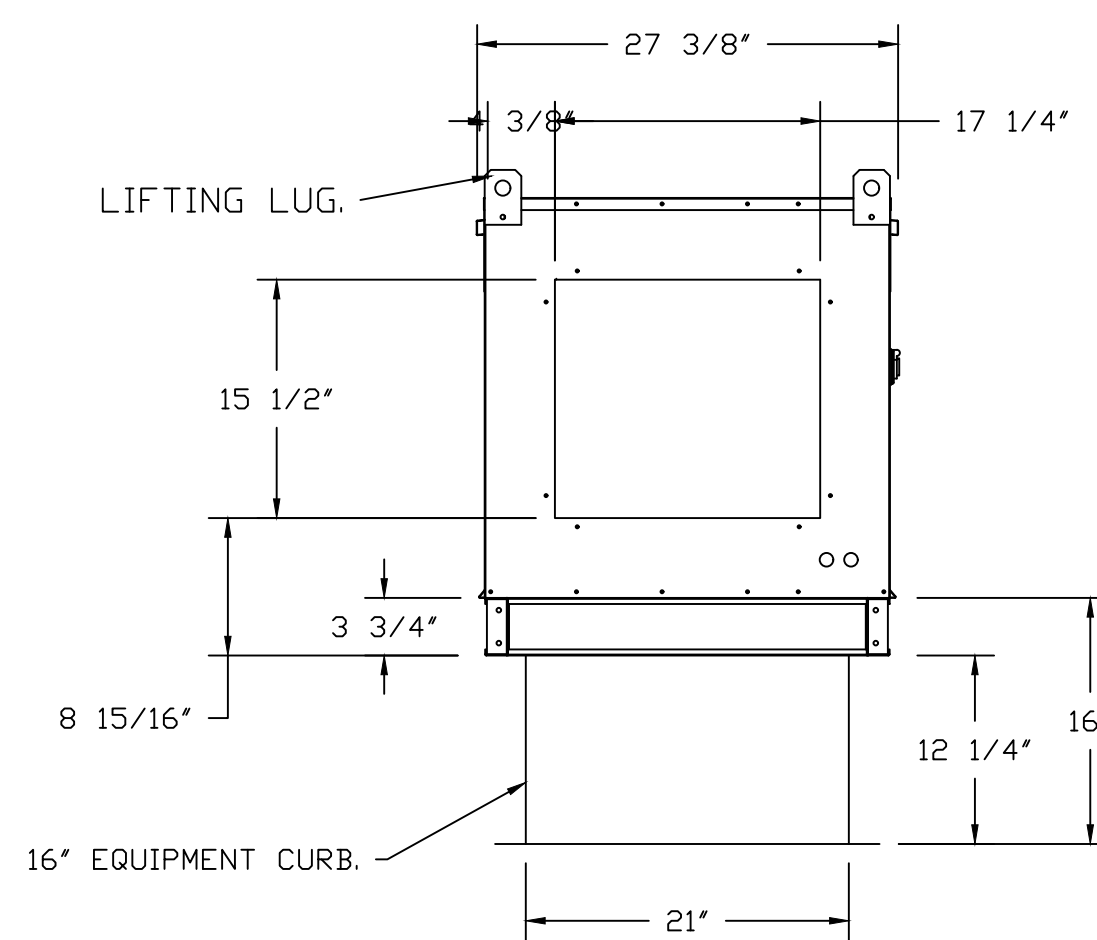
WINTER TEMPERATURE = 12°F. TEMP. RISE = 63°F.
BTUs CALCULATED OFF ACTUAL AIR DENSITY.
OUTPUT BTUs AT ALTITUDE OF 0.0 FT. = 137976.
INPUT BTUs AT ALTITUDE OF 0.0 FT. = 149974.
OUTPUT BTUs AT ALTITUDE OF 570 FT. = 135158.
INPUT BTUs AT ALTITUDE OF 570 FT. = 146911.



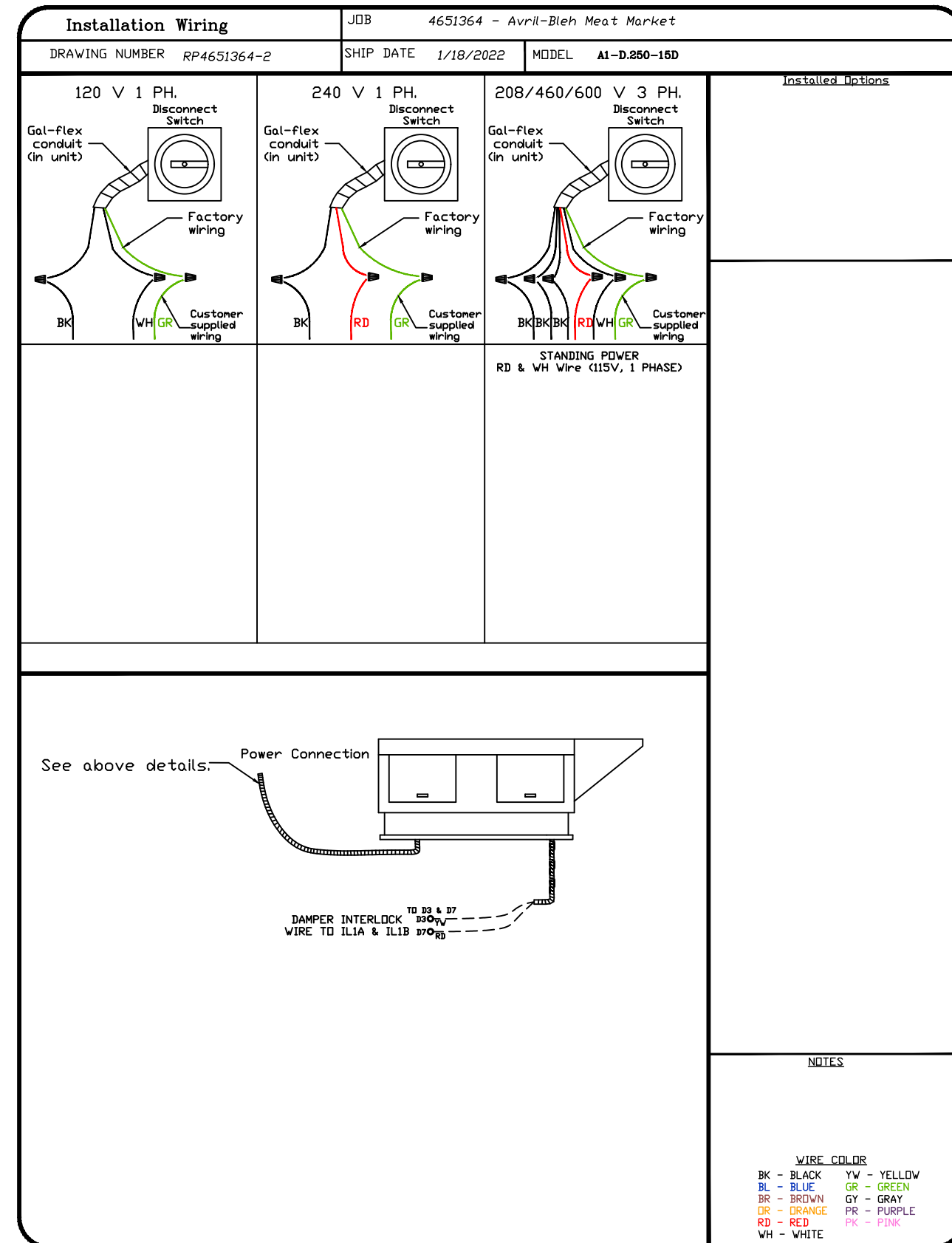
FAN #2 A1-D.250-15D - HEATER (KMUA)

- DIRECT GAS FIRED HEATED MAKE UP AIR UNIT WITH 15" MIXED FLOW DIRECT DRIVE FAN.
- INTAKE HOOD WITH E2 FILTERS-LOW CFM.
- SIDE DISCHARGE - AIR FLOW RIGHT -> LEFT.
- MOTORIZED BACK DRAFT DAMPER 16" X 18" FOR SIZE 1 STANDARD & MODULAR HEATER UNITS W/EXTENDED SHAFT, STANDARD GALVANIZED CONSTRUCTION, 3/4" REAR FLANGE, LOW LEAKAGE, TFB120S ACTUATOR INCLUDED.
- LOW FIRE START. ALLOWS THE BURNER CIRCUIT TO ENERGIZE WHEN THE MODULATION CONTROL IS IN A LOW FIRE POSITION.
- GAS PRESSURE GAUGE, 0-35", 2.5" DIAMETER, 1/4" THREAD SIZE.
- GAS PRESSURE GAUGE, -5 TO +15 INCHES WC., 2.5" DIAMETER, 1/4" THREAD SIZE.
- SEPARATE 120VAC WIRING PACKAGE FOR MAKE-UP AIR UNITS. OPTION MUST BE SELECTED WHEN MOUNTING VFD IN PREWIRE PANEL OR WITH DCV PACKAGE. PROVIDES SEPARATE 120VAC INPUT TO SUPPLY FAN. THIS 120V SIGNAL MUST BE RUN BY ELECTRICIAN FROM DCV TO MUA SWITCH.
- HINGED DOUBLE WALL INSULATED DOOR ASSEMBLY (BURNER/BLOWER SECTION).
- 2 YEAR PARTS WARRANTY

*NOTE: SUPPLY DUCT MUST BE INSTALLED TO MEET SMACNA STANDARDS. A MINIMUM STRAIGHT DUCT LENGTH MUST BE MAINTAINED DOWNSTREAM OF UNIT DISCHARGE AS OUTLINED IN AMCA PUBLICATION 201. WHEN USING RECTANGULAR DUCTWORK, ELBOWS MUST BE RADIUS THROAT, RADIUS BACK WITH TURNING VANES. FLEXIBLE DUCTWORK AND SQUARE THROAT/SQUARE BACK ELBOWS SHOULD NOT BE USED. ANY TRANSITION AND/OR TURNS IN THE DUCTWORK WILL CAUSE SYSTEM EFFECT. SYSTEM EFFECT WILL DRASTICALLY INCREASE STATIC PRESSURE AND REDUCE AIRFLOW. DO NOT RELY ON UNIT TO SUPPORT DUCT IN ANY WAY. FAILURE TO PROPERLY SIZE DUCTWORK MAY CAUSE SYSTEM EFFECTS AND REDUCE PERFORMANCE OF THE EQUIPMENT. SUGGESTED STRAIGHT DUCT SIZE IS 20" X 20".



DIRECT FIRED (DF) PROFILE PLATE ASSEMBLY



WIRE COLOR

BK	-	BLACK	YV	-	YELLOW
BL	-	BLUE	GR	-	GREEN
BR	-	BROWN	GF	-	GRAY
OR	-	ORANGE	PR	-	PURPLE
RD	-	RED	PK	-	PINK
WH	-	WHITE			

REVISIONS

DESCRIPTION	DATE

CAPTIVEAIRE

Air Solutions

1329 East Kemper Rd., Ste. 4210, Cincinnati, OH, 45246 PHONE: (513) 860-5555 EMAIL: reg12@captivaire.com

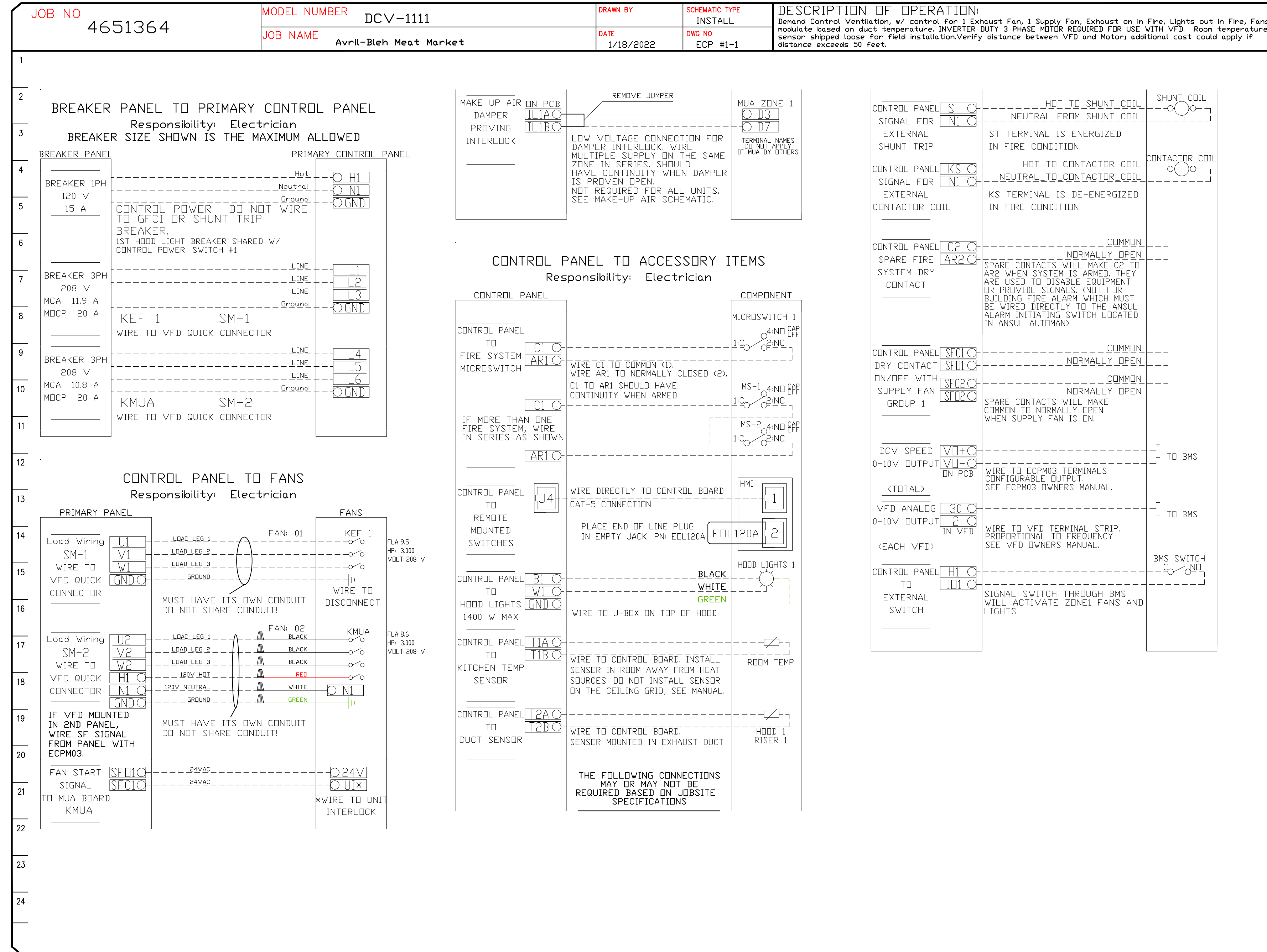
Avril-Bleh Meat Market
33 E Court St,
Cincinnati, OH, 45202

DATE: 1/18/2022
DWG.#: 4651364
DRAWN BY: jcirilli
SCALE: 3/4" = 1'-0"
MASTER DRAWING

SHEET NO.
2

ELECTRICAL PACKAGE - JOB#4651364

NO	TAG	PACKAGE #	LOCATION	SWITCHES		OPTION	FANS CONTROLLED					
				LOCATION	QUANTITY		FAN TAG	TYPE	Φ	HP	VOLT	FLA
1	EP 1	DCV-1111	WALL MOUNT IN SS BOX	02 - FACE MOUNT RIGHT SIDE OF HOOD HOOD # 1	1 LIGHT 1 FAN	SMART CONTROLS DCV	KEF 1	EXHAUST	3	3.000	208	9.5
							KMUA	SUPPLY	3	3.000	208	8.6



RESPONSIBILITY MATRIX

- A) REQUIREMENTS FOR FOOD SERVICE CONTRACTOR (F.E.C.)**
- HOOD, FANS, & ALL ASSOCIATED EXHAUST & SUPPLY DUCTWORK IS PROVIDED & INSTALLED BY FOODSERVICE CONTRACTOR
 - HOOD SYSTEM TO BE STARTED UP BY CONTRACTOR
 - SMOKE TEST ON THE HOODS IN FRONT OF THE OWNER TO ENSURE SATISFACTION WITH COOKING EQUIPMENT ON.
 - HOOD INSTALLER TO START UP MUA HEATER OF MUA, THEN FILL OUT FACTORY STARTUP.
 - ALL WALL STAINLESS FOR UNDER & AROUND HOODS SHALL BE INSTALLED ALSO.
 - ASSIST IN PROVIDING & SUBMITTING IN HOOD & ANSUL PERMIT DRAWINGS.
 - MOUNT FANS AS SHOWN ON DRAWINGS INCLUDING MUA.
 - INSTALLER TO ENSURE ALL HOOD AND FAN ACCESSORIES ARE INSTALLED SUCH AS GREASE CUPS, HINGE KITS, FILTER INTAKES, AND ANY OTHER MISC. ITEMS SHIPPED WITH THE PRODUCT.
 - INSTALL ALL LISTED GREASE DUCT FROM CAPTIVE-AIRE SPECIFICATIONS. INSTALL MAKE-UP-AIR DUCT FROM HOODS TO MUA ON ROOF.
- B) NOTES (REQUIREMENTS) FOR ELECTRICIAN:**
- FIELD WIRE FROM BUILDING PANEL QTY (2) 3 PHASE (208V) POWER FOR QTY (1) EXHAUST FAN & (1) MAKE UP AIR FAN TO CONTROL PANEL & THEN UP TO UPPER ROOF TO FANS DISCONNECT.
 - THEN WIRE FROM HOOD CONTROL PANEL SF1 & N1 TO MAKE UP AIR UNIT ON ROOF.
 - FIELD WIRE FROM BUILDING PANEL TO CAPTIVE AIRE CONTROLS CABINET (HOOD MOUNTED) 1 PHASE, 115V. CIRCUIT TO BE USED FOR LIGHTS & CONTROLS CIRCUITRY.
 - WIRE RED/BROWN WIRES ON ANSUL CABINET TO CAPTIVE-AIRES CONTROL PANEL C1 & AR1 TERMINAL IF NOT ALREADY DONE AT FACTORY.
 - FIELD WIRE THE DUCT SENSORS LOCATED IN EXHAUST COLLARS TO CAPTIVE AIRE CABINET. CAPTIVE AIRE SUPPLIES THE WHITE STAT WIRE & SHIPPED IN CABINET
 - FIELD WIRE & INSTALL ROOM SENSOR SUPPLIED BY CAPTIVE AIRE. MOUNT SENSOR 6' AWAY FROM HOOD UP HIGH. STAT WIRE PROVIDED BY CAPTIVE AIRE.
 - FIELD WIRE THE BUILDING ALARM SYSTEM (IF APPLICABLE) INTO THE ANSUL MICRO SWITCH LOCATED AT THE RIGHT END OF THE HOOD.
 - IF ANY ELECTRICIAN UNDER HOOD, BREAKER MUST BE OF SHUNT TRIP TYPE & ELECTRICIAN TO WIRE FROM ST & N1 TERMINALS OF HOOD PANEL TO SHUNT TRIP DEVICE BY OTHERS
 - VERIFY FAN ROTATION
- C) FIELD NOTES (OTHER TRADES)**
- SITE PLUMBER TO INSTALL THE CAPTIVE-AIRE PROVIDED ANSUL GAS VALVE FOR EACH SYSTEM. PLUMBER TO FIELD INSTALL GAS VALVE INLINE WITH THE GAS PIPING GOING TO THE COOKING EQUIPMENT OF THE SYSTEM. PLUMBER TO COORDINATE WITH THE F.E.C. FOR ALL HOOK UP OF GAS COOKING EQUIPMENT & ENSURE ALL GAS IS VENTED ONCE HOOKED UP. USE GAS REGULATORS TO MAINTAIN 7-14" OF GAS PRESSURE.
 - PLUMBER TO SUPPLY & INSTALL GAS LINE TO MUA ON ROOF.
- D) GENERAL CONTRACTOR (GS) RESPONSIBILITIES:**
- GC IS RESPONSIBLE TO HOLD A COORDINATION MEETING WITH ALL TRADES TO ENSURE UNDERSTANDING OF REQUIREMENTS AND MAKE SURE THERE ARE NO CONFLICTS THROUGHOUT THE PROJECT & ASSIST AS REQUIRED
 - GC IS RESPONSIBLE FOR ANY BUILDING CONSTRUCTION CHANGES OR STRUCTURAL REQUIREMENTS TO INCLUDE BUT NOT LIMITED TO: HOOD WALL READY TO ACCEPT WALL STAINLESS & HOOD, ANY REQUIREMENTS TO HEAD OFF JOIST FOR DUCT ROUTING, ANY STRUCTURAL SUPPORTS REQUIRED TO SHORE UP BUILDING OR STRUCTURE, AND ANY FINISHED CEILING WORK, CEILING WORK, DEMO, OR COSMETIC & PATCHING WORK OR ANY SHAFT WORK..
 - PROVIDE A WORKING CONSTRUCTION SCHEDULE TO ALL TRADES.

FOOD SERVICE CONTRACTOR IS RESPONSIBLE TO SUPPLY & INSTALL ALL HOODS, FANS, HOOD CONTROL PANEL, ANSUL SYSTEM, CAPTIVE-AIRE LISTED GREASE DUCT, SUPPLY DUCT, FIRE WRAP, AND INSTALL WALL STAINLESS AROUND HOOD. ALL OTHER TRADES TO REVIEW RESPONSIBILITY MATRIX ON PAGE 1 FOR THEIR RESPONSIBILITY. CONTACT ANDY DALTON WITH C&T DESIGN, INC FOR ADDITIONAL QUESTIONS AT 513-771-2828

REVISIONS

DESCRIPTION	DATE

Avril-Bleh Meat Market
 33 E Court St,
 Cincinnati, OH, 45202

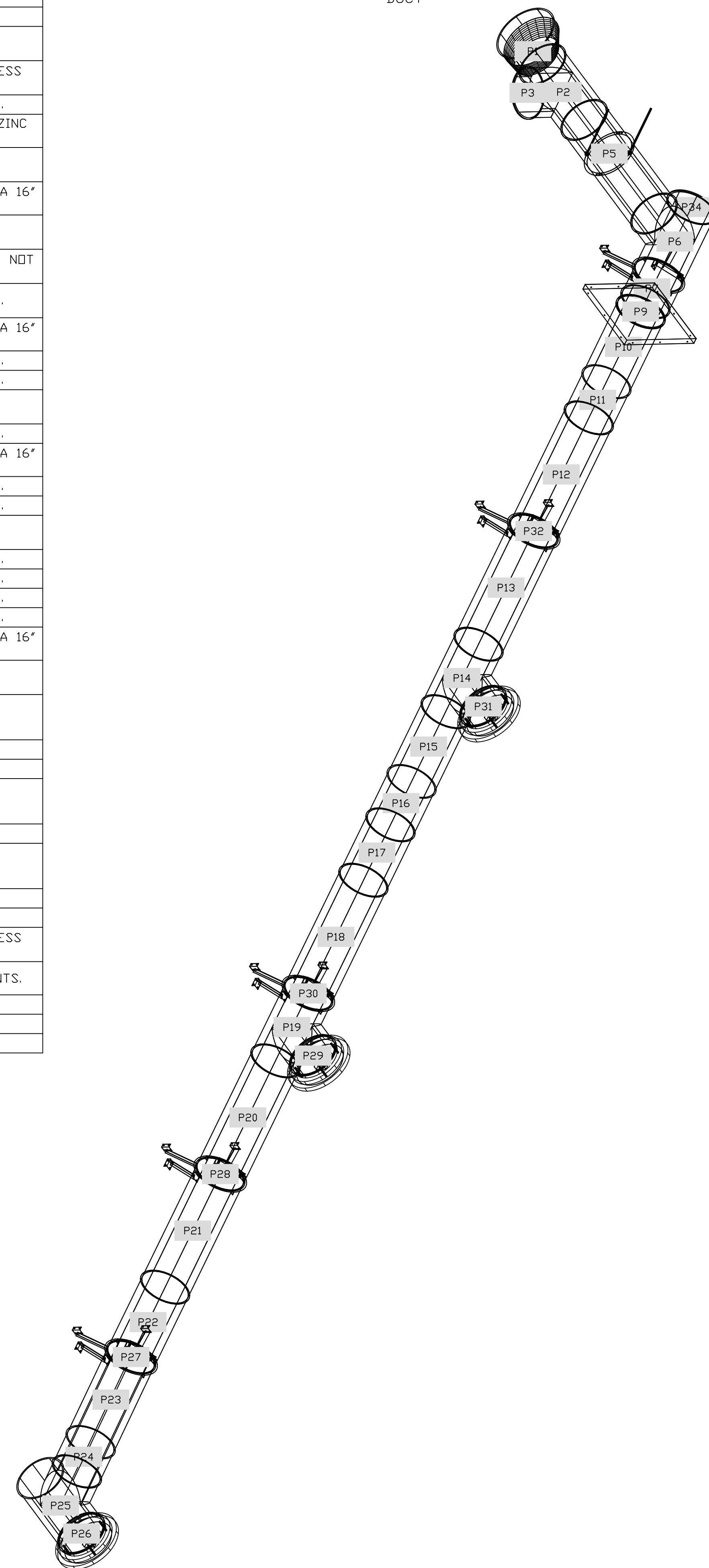
DATE: 1/18/2022
DWG.#: 4651364
DRAWN BY: jcirilli
SCALE: 3/4" = 1'-0"
MASTER DRAWING

SHEET NO.
 3


DUCTWORK #1 PARTS - JOB#4651364 DUCT

TAG	PART #	CFM	GPM	ZONE	COVEREDBY	SP	WEIGHT	VELOCITY	QTY	DESCRIPTION
P1	DW1620ADPEC						12.00		1	SINGLE WALL DUCT ADAPTER, 16" DUCT DIA TO 20" DUCT DIA, ECCENTRIC ASSEMBLY.
P2 ASSEMBLED W/P3	DW16TEASY			1			19.23		1	SINGLE WALL DUCT TEE, 16" DUCT, ASSEMBLY.
P3 ASSEMBLED W/P2 □=T	DW1617ADKIT						4.59		1	DUCT ACCESS DDDR WITH HANDLE & GREASE DAM, FOR 16" DUCT USE 17" DDDR. STAINLESS STEEL.
P4	DW1647LT						24.89		1	SINGLE WALL DUCT 16" DIAMETER, 47" LONG, FLANGE AT BOTH ENDS. STAINLESS STEEL.
P5	DW16SUBRASY						3.18		1	DUCT SUPPRT BRACKET KIT, 16" DUCT, USED FOR HANGING DUCT. 12 GA STEEL, CLEAR ZINC COATING. - 2 RINGS, 4 BRACKETS, & HARDWARE BAG 2.
P6 ASSEMBLED W/P34	DW16TEASY			1			19.23		1	SINGLE WALL DUCT TEE, 16" DUCT, ASSEMBLY.
P7	DW1624AJDKIT						16.63		1	SINGLE WALL DUCT ADJUSTABLE, 16" DIAMETER, 23.5" LONG, FLANGE AT ONE END WITH A 16" ADJUSTABLE COLLAR - STAINLESS STEEL.
P8 ASSEMBLED W/P9	DW1604LT						2.57		1	SINGLE WALL DUCT 16" DIAMETER, 4" LONG, FLANGE AT BOTH ENDS. STAINLESS STEEL.
P9 ASSEMBLED W/P8,P10	DW2616TPDB						16.99		1	DUCT TO CURB TRANSITION DOWN TURN, 26-1/2" CURB TO 16" DUCT, 16 GA ALUMINIZED. NOT FOR USE WITH EXHAUST FANS.
P10 ASSEMBLED W/P9	DW1629LT						15.68		1	SINGLE WALL DUCT 16" DIAMETER, 29" LONG, FLANGE AT BOTH ENDS. STAINLESS STEEL.
P11	DW1624AJDKIT						16.63		1	SINGLE WALL DUCT ADJUSTABLE, 16" DIAMETER, 23.5" LONG, FLANGE AT ONE END WITH A 16" ADJUSTABLE COLLAR - STAINLESS STEEL.
P12	DW1647LT						24.89		1	SINGLE WALL DUCT 16" DIAMETER, 47" LONG, FLANGE AT BOTH ENDS. STAINLESS STEEL.
P13	DW1647LT						24.89		1	SINGLE WALL DUCT 16" DIAMETER, 47" LONG, FLANGE AT BOTH ENDS. STAINLESS STEEL.
P14 ASSEMBLED W/P31	DW16TEASY			1			19.23		1	SINGLE WALL DUCT TEE, 16" DUCT, ASSEMBLY.
P15	DW1629LT						15.68		1	SINGLE WALL DUCT 16" DIAMETER, 29" LONG, FLANGE AT BOTH ENDS. STAINLESS STEEL.
P16	DW1648AJDKIT						30.39		1	SINGLE WALL DUCT ADJUSTABLE, 16" DIAMETER, 47.5" LONG, FLANGE AT ONE END WITH A 16" ADJUSTABLE COLLAR - STAINLESS STEEL.
P17	DW1623LT						12.32		1	SINGLE WALL DUCT 16" DIAMETER, 23" LONG, FLANGE AT BOTH ENDS. STAINLESS STEEL.
P18	DW1647LT						24.89		1	SINGLE WALL DUCT 16" DIAMETER, 47" LONG, FLANGE AT BOTH ENDS. STAINLESS STEEL.
P19 ASSEMBLED W/P29	DW16TEASY			1			19.23		1	SINGLE WALL DUCT TEE, 16" DUCT, ASSEMBLY.
P20	DW1647LT						24.89		1	SINGLE WALL DUCT 16" DIAMETER, 47" LONG, FLANGE AT BOTH ENDS. STAINLESS STEEL.
P21	DW1647LT						24.89		1	SINGLE WALL DUCT 16" DIAMETER, 47" LONG, FLANGE AT BOTH ENDS. STAINLESS STEEL.
P22	DW1629LT						15.68		1	SINGLE WALL DUCT 16" DIAMETER, 29" LONG, FLANGE AT BOTH ENDS. STAINLESS STEEL.
P23	DW1635LT						18.67		1	SINGLE WALL DUCT 16" DIAMETER, 35" LONG, FLANGE AT BOTH ENDS. STAINLESS STEEL.
P24	DW1630AJDKIT						20.06		1	SINGLE WALL DUCT ADJUSTABLE, 16" DIAMETER, 29.5" LONG, FLANGE AT ONE END WITH A 16" ADJUSTABLE COLLAR - STAINLESS STEEL.
P25 ASSEMBLED W/P26	DW16TEASY			1			19.23		1	SINGLE WALL DUCT TEE, 16" DUCT, ASSEMBLY.
P26 ASSEMBLED W/P25 □=S	DW1617ADIASY						16.57		1	DUCT ACCESS DDDR - INSULATED - USED WITH 16" DUCT - GREASE DAM INCLUDED - ASSEMBLY.
P27	DW16VESU						17.32		1	DUCT VERTICAL SUPPRT ASSEMBLY, 16" DUCT. PARTS ARE ZINC COATED.
P28	DW16VESU						17.32		1	DUCT VERTICAL SUPPRT ASSEMBLY, 16" DUCT. PARTS ARE ZINC COATED.
P29 ASSEMBLED W/P19 □=T	DW1617ADIASY						16.57		1	DUCT ACCESS DDDR - INSULATED - USED WITH 16" DUCT - GREASE DAM INCLUDED - ASSEMBLY.
P30	DW16VESU						17.32		1	DUCT VERTICAL SUPPRT ASSEMBLY, 16" DUCT. PARTS ARE ZINC COATED.
P31 ASSEMBLED W/P14 □=T	DW1617ADIASY						16.57		1	DUCT ACCESS DDDR - INSULATED - USED WITH 16" DUCT - GREASE DAM INCLUDED - ASSEMBLY.
P32	DW16VESU						17.32		1	DUCT VERTICAL SUPPRT ASSEMBLY, 16" DUCT. PARTS ARE ZINC COATED.
P33	DW16VESU						17.32		1	DUCT VERTICAL SUPPRT ASSEMBLY, 16" DUCT. PARTS ARE ZINC COATED.
P34 ASSEMBLED W/P6 □=S	DW1617ADKIT						4.59		1	DUCT ACCESS DDDR WITH HANDLE & GREASE DAM, FOR 16" DUCT USE 17" DDDR. STAINLESS STEEL.
	3M-2000PLUS						0.80		9	DUCT - 3M FIRE BARRIER 2000 PLUS SILICONE - USED AS SEALANT TO SEAL DUCT JOINTS.
	DW16CLASY						1.18		26	DUCT "V" CLAMP WITH NEW DESIGN 14 GA BRACKETS, 16" DUCT, ASSEMBLY.
	DW20CLASY						1.41		1	DUCT "V" CLAMP WITH NEW DESIGN 14 GA BRACKETS, 20" DUCT, ASSEMBLY.
TOTAL WEIGHT							626.75			

DUCTWORK #1 SE VIEW
DUCT



REVISIONS	
DESCRIPTION	DATE:



1329 East Kemper Rd., Ste. 4210, Cincinnati, OH, 45216 PHONE: (513) 860-5555 EMAIL: reg12@captivair.com

Avril-Bleh Meat Market
33 E Court St,
Cincinnati, OH, 45202

DATE: 1/18/2022
DWG.#: 4651364
DRAWN BY: jcirilli
SCALE: 3/4" = 1'-0"
MASTER DRAWING
SHEET NO. 4