

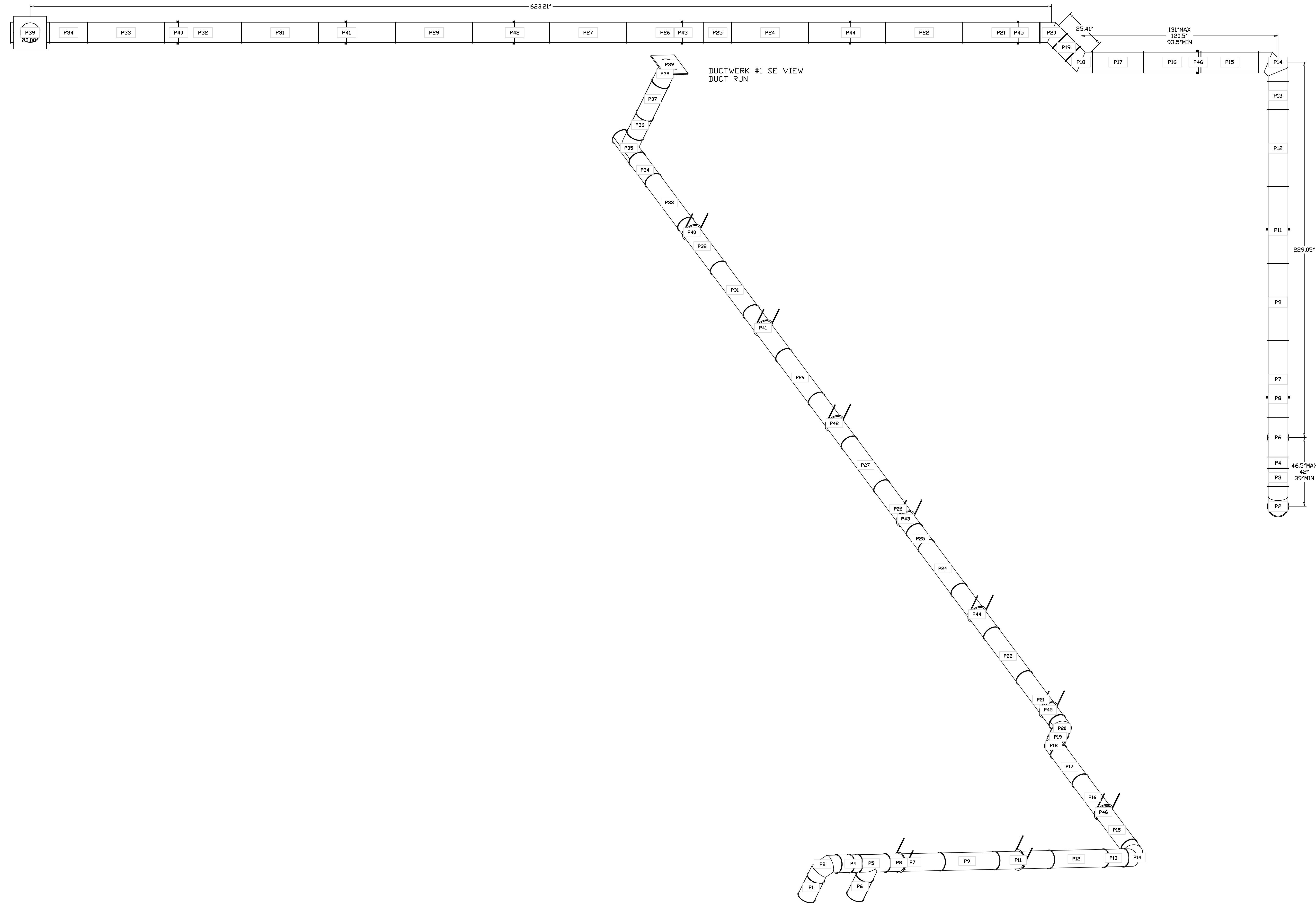
DUCTWORK #1 PARTS - JOB#5645824 DUCT RUN

TAG	PART #	CFM	GPM	ZONE	COVEREDBY	SP	WEIGHT	VELOCITY	QTY	DESCRIPTION
P1	DW1217LT	450				-0.001	7.05	572.96	1	SINGLE WALL DUCT 12" DIAMETER, 17' LONG, FLANGE AT BOTH ENDS. STAINLESS STEEL.
P2	DW1290ASY	450				-0.0135	8.44	572.96	1	SINGLE WALL DUCT 90 DEGREE ELBOW, 12' DUCT, ASSEMBLY.
P3	DW1211LT	450				-0.0006	4.62	572.96	1	SINGLE WALL DUCT 12" DIAMETER, 11' LONG, FLANGE AT BOTH ENDS. STAINLESS STEEL.
P4	DW1218AJDKIT	450				-0.0004	9.90	572.96	1	SINGLE WALL DUCT ADJUSTABLE, 12" DIAMETER, 17.5' LONG, FLANGE AT ONE END WITH A 12" ADJUSTABLE COLLAR - STAINLESS STEEL.
P5	DW12TEASY	900		1		-0.0175	11.69	1145.92	1	SINGLE WALL DUCT TEE, 12" DUCT, ASSEMBLY.
P6	DW1217LT	450				-0.001	7.05	572.96	1	SINGLE WALL DUCT 12" DIAMETER, 17' LONG, FLANGE AT BOTH ENDS. STAINLESS STEEL.
P7	DW1247LT	900				-0.011	18.70	1145.92	1	SINGLE WALL DUCT 12" DIAMETER, 47' LONG, FLANGE AT BOTH ENDS. STAINLESS STEEL.
P8	DW12SUBRASY						2.76		1	DUCT SUPPORT BRACKET KIT, 12" DUCT, USED FOR HANGING DUCT. 12 GA STEEL, CLEAR ZINC COATING - 2 RINGS, 4 BRACKETS, & HARDWARE BAG 2.
P9	DW1247LT	900				-0.011	18.70	1145.92	1	SINGLE WALL DUCT 12" DIAMETER, 47' LONG, FLANGE AT BOTH ENDS. STAINLESS STEEL.
P10	DW1247LT	900				-0.011	18.70	1145.92	1	SINGLE WALL DUCT 12" DIAMETER, 47' LONG, FLANGE AT BOTH ENDS. STAINLESS STEEL.
P11	DW12SUBRASY						2.76		1	DUCT SUPPORT BRACKET KIT, 12" DUCT, USED FOR HANGING DUCT. 12 GA STEEL, CLEAR ZINC COATING - 2 RINGS, 4 BRACKETS, & HARDWARE BAG 2.
P12	DW1247LT	900				-0.011	18.70	1145.92	1	SINGLE WALL DUCT 12" DIAMETER, 47' LONG, FLANGE AT BOTH ENDS. STAINLESS STEEL.
P13	DW1217LT	900				-0.004	7.05	1145.92	1	SINGLE WALL DUCT 12" DIAMETER, 17' LONG, FLANGE AT BOTH ENDS. STAINLESS STEEL.
P14	DW1290ASY	900				-0.036	8.44	1145.92	1	SINGLE WALL DUCT 90 DEGREE ELBOW, 12' DUCT, ASSEMBLY.
P15	DW1235LT	900				-0.008	14.03	1145.92	1	SINGLE WALL DUCT 12" DIAMETER, 35' LONG, FLANGE AT BOTH ENDS. STAINLESS STEEL.
P16	DW1235LT	900				-0.008	14.03	1145.92	1	SINGLE WALL DUCT 12" DIAMETER, 35' LONG, FLANGE AT BOTH ENDS. STAINLESS STEEL.
P17	DW1248AJDKIT	900				-0.007	22.74	1145.92	1	SINGLE WALL DUCT ADJUSTABLE, 12" DIAMETER, 47.5' LONG, FLANGE AT ONE END WITH A 12" ADJUSTABLE COLLAR - STAINLESS STEEL.
P18	DW1245ASY	900				-0.012	5.86	1145.92	1	SINGLE WALL DUCT 45 DEGREE ELBOW, 12' DUCT, ASSEMBLY.
P19	DW1211LT	900				-0.003	4.62	1145.92	1	SINGLE WALL DUCT 12" DIAMETER, 11' LONG, FLANGE AT BOTH ENDS. STAINLESS STEEL.
P20	DW1245ASY	900				-0.03	5.86	1145.92	1	SINGLE WALL DUCT 45 DEGREE ELBOW, 12' DUCT, ASSEMBLY.
P21	DW1247LT	900				-0.011	18.70	1145.92	1	SINGLE WALL DUCT 12" DIAMETER, 47' LONG, FLANGE AT BOTH ENDS. STAINLESS STEEL.
P22	DW1247LT	900				-0.011	18.70	1145.92	1	SINGLE WALL DUCT 12" DIAMETER, 47' LONG, FLANGE AT BOTH ENDS. STAINLESS STEEL.
P23	DW1247LT	900				-0.011	18.70	1145.92	1	SINGLE WALL DUCT 12" DIAMETER, 47' LONG, FLANGE AT BOTH ENDS. STAINLESS STEEL.
P24	DW1247LT	900				-0.011	18.70	1145.92	1	SINGLE WALL DUCT 12" DIAMETER, 47' LONG, FLANGE AT BOTH ENDS. STAINLESS STEEL.
P25	DW1217LT	900				-0.004	7.05	1145.92	1	SINGLE WALL DUCT 12" DIAMETER, 17' LONG, FLANGE AT BOTH ENDS. STAINLESS STEEL.
P26	DW1247LT	900				-0.011	18.70	1145.92	1	SINGLE WALL DUCT 12" DIAMETER, 47' LONG, FLANGE AT BOTH ENDS. STAINLESS STEEL.
P27	DW1247LT	900				-0.011	18.70	1145.92	1	SINGLE WALL DUCT 12" DIAMETER, 47' LONG, FLANGE AT BOTH ENDS. STAINLESS STEEL.
P28	DW1247LT	900				-0.011	18.70	1145.92	1	SINGLE WALL DUCT 12" DIAMETER, 47' LONG, FLANGE AT BOTH ENDS. STAINLESS STEEL.
P29	DW1247LT	900				-0.011	18.70	1145.92	1	SINGLE WALL DUCT 12" DIAMETER, 47' LONG, FLANGE AT BOTH ENDS. STAINLESS STEEL.
P30	DW1247LT	900				-0.011	18.70	1145.92	1	SINGLE WALL DUCT 12" DIAMETER, 47' LONG, FLANGE AT BOTH ENDS. STAINLESS STEEL.
P31	DW1247LT	900				-0.011	18.70	1145.92	1	SINGLE WALL DUCT 12" DIAMETER, 47' LONG, FLANGE AT BOTH ENDS. STAINLESS STEEL.
P32	DW1247LT	900				-0.011	18.70	1145.92	1	SINGLE WALL DUCT 12" DIAMETER, 47' LONG, FLANGE AT BOTH ENDS. STAINLESS STEEL.
P33	DW1247LT	900				-0.011	18.70	1145.92	1	SINGLE WALL DUCT 12" DIAMETER, 47' LONG, FLANGE AT BOTH ENDS. STAINLESS STEEL.
P34	DW1223LT	900				-0.005	9.41	1145.92	1	SINGLE WALL DUCT 12" DIAMETER, 23' LONG, FLANGE AT BOTH ENDS. STAINLESS STEEL.
P35	DW12TEASY			1			11.69		1	SINGLE WALL DUCT TEE, 12" DUCT, ASSEMBLY.
P36	DW1217LT						7.05		1	SINGLE WALL DUCT 12" DIAMETER, 17' LONG, FLANGE AT BOTH ENDS. STAINLESS STEEL.
P37	DW1229LT						11.69		1	SINGLE WALL DUCT 12" DIAMETER, 29' LONG, FLANGE AT BOTH ENDS. STAINLESS STEEL.
P38 ASSEMBLED W/P39	DW1230AJDKIT						15.04		1	SINGLE WALL DUCT ADJUSTABLE, 12" DIAMETER, 29.5' LONG, FLANGE AT ONE END WITH A 12" ADJUSTABLE COLLAR - STAINLESS STEEL.
P39 ASSEMBLED W/P38	DW1912TPDBEX						7.50		1	DUCT TO CURB TRANSITION 3/4" DOWN TURN, 19-1/2" CURB TO 12" DUCT, 16 GA ALUMINIZED STEEL. FOR USE WITH EXHAUST FANS.
P40	DW12SUBRASY						2.76		1	DUCT SUPPORT BRACKET KIT, 12" DUCT, USED FOR HANGING DUCT. 12 GA STEEL, CLEAR ZINC COATING - 2 RINGS, 4 BRACKETS, & HARDWARE BAG 2.
P41	DW12SUBRASY						2.76		1	DUCT SUPPORT BRACKET KIT, 12" DUCT, USED FOR HANGING DUCT. 12 GA STEEL, CLEAR ZINC COATING - 2 RINGS, 4 BRACKETS, & HARDWARE BAG 2.
P42	DW12SUBRASY						2.76		1	DUCT SUPPORT BRACKET KIT, 12" DUCT, USED FOR HANGING DUCT. 12 GA STEEL, CLEAR ZINC COATING - 2 RINGS, 4 BRACKETS, & HARDWARE BAG 2.
P43	DW12SUBRASY						2.76		1	DUCT SUPPORT BRACKET KIT, 12" DUCT, USED FOR HANGING DUCT. 12 GA STEEL, CLEAR ZINC COATING - 2 RINGS, 4 BRACKETS, & HARDWARE BAG 2.
P44	DW12SUBRASY						2.76		1	DUCT SUPPORT BRACKET KIT, 12" DUCT, USED FOR HANGING DUCT. 12 GA STEEL, CLEAR ZINC COATING - 2 RINGS, 4 BRACKETS, & HARDWARE BAG 2.
P45	DW12SUBRASY						2.76		1	DUCT SUPPORT BRACKET KIT, 12" DUCT, USED FOR HANGING DUCT. 12 GA STEEL, CLEAR ZINC COATING - 2 RINGS, 4 BRACKETS, & HARDWARE BAG 2.
P46	DW12SUBRASY						2.76		1	DUCT SUPPORT BRACKET KIT, 12" DUCT, USED FOR HANGING DUCT. 12 GA STEEL, CLEAR ZINC COATING - 2 RINGS, 4 BRACKETS, & HARDWARE BAG 2.
P47	DW161150LT	2400				-0.0044	6.14	1718.87	1	SINGLE WALL DUCT 16" DIAMETER, 11.50' LONG, FLANGE AT BOTH ENDS. STAINLESS STEEL.
P48	DW1618AJDKIT	2400				-0.0036	13.19	1718.87	1	SINGLE WALL DUCT ADJUSTABLE, 16" DIAMETER, 17.5' LONG, FLANGE AT ONE END WITH A 16" ADJUSTABLE COLLAR - STAINLESS STEEL.
P49	DW1620ADPEC	2400				-0.03	12.00	1718.87	1	SINGLE WALL DUCT ADAPTER, 16" DUCT DIA TO 20" DUCT DIA, ECCENTRIC ASSEMBLY.
P50	DW20TEASY	4600		1		-0.388	26.16	2108.48	1	SINGLE WALL DUCT TEE, 20" DUCT, ASSEMBLY.
P51 ASSEMBLED W/P73	DW20TEASY	4600		1		-0.011	26.16	2108.48	1	SINGLE WALL DUCT TEE, 20" DUCT, ASSEMBLY.
P52	DW2047LT	4600				-0.016	31.08	2108.48	1	SINGLE WALL DUCT 20" DIAMETER, 47' LONG, FLANGE AT BOTH ENDS. STAINLESS STEEL.
P53	DW2048AJDKIT	4600				-0.013	37.95	2108.48	1	SINGLE WALL DUCT ADJUSTABLE, 20" DIAMETER, 47.5' LONG, FLANGE AT ONE END WITH A 20" ADJUSTABLE COLLAR - STAINLESS STEEL.
P54 ASSEMBLED W/P55	DW20TEASY	4600		1		-0.242	26.16	2108.48	1	SINGLE WALL DUCT TEE, 20" DUCT, ASSEMBLY.
P55 ASSEMBLED W/P54 D=S	DW2021ADIASY						23.46		1	DUCT ACCESS DOOR - INSULATED - USED WITH 20" DUCT - GREASE DAM INCLUDED - ASSEMBLY.
P56	DW2029LT	4600				-0.01	19.42	2108.48	1	SINGLE WALL DUCT 20" DIAMETER, 29' LONG, FLANGE AT BOTH ENDS. STAINLESS STEEL.
P57	DW2035LT	4600				-0.012	23.51	2108.48	1	SINGLE WALL DUCT 20" DIAMETER, 35' LONG, FLANGE AT BOTH ENDS. STAINLESS STEEL.
P58	DW2048AJDKIT	4600				-0.013	37.95	2108.48	1	SINGLE WALL DUCT ADJUSTABLE, 20" DIAMETER, 47.5' LONG, FLANGE AT ONE END WITH A 20" ADJUSTABLE COLLAR - STAINLESS STEEL.
P59 ASSEMBLED W/P69	DW20TEASY	4600		1		-0.2016	26.16	2108.48	1	SINGLE WALL DUCT TEE, 20" DUCT, ASSEMBLY.
P60	DW2017LT	4600				-0.006	11.54	2108.48	1	SINGLE WALL DUCT 20" DIAMETER, 17' LONG, FLANGE AT BOTH ENDS. STAINLESS STEEL.
P61	DW2047LT	4600				-0.016	31.08	2108.48	1	SINGLE WALL DUCT 20" DIAMETER, 47' LONG, FLANGE AT BOTH ENDS. STAINLESS STEEL.
P62	DW2047LT	4600				-0.016	31.08	2108.48	1	SINGLE WALL DUCT 20" DIAMETER, 47' LONG, FLANGE AT BOTH ENDS. STAINLESS STEEL.
P63 ASSEMBLED W/P64	DW20TEASY	4600		1		-0.2016	26.16	2108.48	1	SINGLE WALL DUCT TEE, 20" DUCT, ASSEMBLY.
P64 ASSEMBLED W/P63 D=S	DW2021ADIASY						23.46		1	DUCT ACCESS DOOR - INSULATED - USED WITH 20" DUCT - GREASE DAM INCLUDED - ASSEMBLY.
P65	DW2023LT	4600				-0.0081	15.65	2108.48	1	SINGLE WALL DUCT 20" DIAMETER, 23' LONG, FLANGE AT BOTH ENDS. STAINLESS STEEL.
P66 ASSEMBLED W/P67	DW2024AJDKIT	4600				-0.0049	20.76	2108.48	1	SINGLE WALL DUCT ADJUSTABLE, 20" DIAMETER, 23.5' LONG, FLANGE AT ONE END WITH A 20" ADJUSTABLE COLLAR - STAINLESS STEEL.
P67 ASSEMBLED W/P66 SYSTEM AT P67	DW3120TPDBEX	4600					11.50	2108.48	1	DUCT TO CURB TRANSITION 3/4" DOWN TURN, 31-1/2" CURB TO 20" DUCT, 16 GA ALUMINIZED. NON-STANDARD PART. FOR USE WITH EXHAUST FANS.
P68	DW20SUBRASY						3.58		1	DUCT SUPPORT BRACKET KIT, 20" DUCT, USED FOR HANGING DUCT. 12 GA STEEL, CLEAR ZINC COATING - 2 RINGS, 4 BRACKETS, & HARDWARE BAG 2.
P69 ASSEMBLED W/P59 D=S	DW2021ADIASY						23.46		1	DUCT ACCESS DOOR - INSULATED - USED WITH 20" DUCT - GREASE DAM INCLUDED - ASSEMBLY.
P70	DW20SUBRASY						3.58		1	DUCT SUPPORT BRACKET KIT, 20" DUCT, USED FOR HANGING DUCT. 12 GA STEEL, CLEAR ZINC COATING - 2 RINGS, 4 BRACKETS, & HARDWARE BAG 2.

DUCTWORK #1 PARTS - JOB#5645824 DUCT RUN

TAG	PART #	CFM	GPM	ZONE	COVEREDBY	SP	WEIGHT	VELOCITY	QTY	DESCRIPTION
P71	DW20SUBRASY						3.58		1	DUCT SUPPORT BRACKET KIT, 20" DUCT, USED FOR HANGING DUCT. 12 GA STEEL, CLEAR ZINC COATING - 2 RINGS, 4 BRACKETS, & HARDWARE BAG 2.
P72	DW20SUBRASY						3.58		1	DUCT SUPPORT BRACKET KIT, 20" DUCT, USED FOR HANGING DUCT. 12 GA STEEL, CLEAR ZINC COATING - 2 RINGS, 4 BRACKETS, & HARDWARE BAG 2.
P73 ASSEMBLED W/P51 D=T	DW2021ADIASY						23.46		1	DUCT ACCESS DOOR - INSULATED - USED WITH 20" DUCT - GREASE DAM INCLUDED - ASSEMBLY.
P74	DW1620ADPEC	2200				-0.025	12.00	1575.63	1	SINGLE WALL DUCT ADAPTER, 16" DUCT DIA TO 20" DUCT DIA, ECCENTRIC ASSEMBLY.
P75	DW1604C2D	2200				-0.001	2.73	1575.63	1	SINGLE WALL DUCT OFF SET COLLAR - 16" DIAMETER DUCT - 1/2" PITCH.
P76	DW1629LT	2200				-0.0095	15.68	1575.63	1	SINGLE WALL DUCT 16" DIAMETER, 29' LONG, FLANGE AT BOTH ENDS. STAINLESS STEEL.
P77	DW1624AJDKIT	2200				-0.0045	16.63	1575.63	1	SINGLE WALL DUCT ADJUSTABLE, 16" DIAMETER, 23.5' LONG, FLANGE AT ONE END WITH A 16" ADJUSTABLE COLLAR - STAINLESS STEEL.
P78	DW1647LT	2200				-0.015	24.89	1575.63	1	SINGLE WALL DUCT 16" DIAMETER, 47' LONG, FLANGE AT BOTH ENDS. STAINLESS STEEL.
P79	DW1604C2D	2200				-0.001	2.73	1575.63	1	SINGLE WALL DUCT OFF SET COLLAR - 16" DIAMETER DUCT - 1/2" PITCH.
P80 ASSEMBLED W/P83	DW16TEASY	2200		1		-0.0962	19.23	1575.63	1	SINGLE WALL DUCT TEE, 16" DUCT, ASSEMBLY.
P81	DW1617LT	2200				-0.0057	9.24	1575.63	1	SINGLE WALL DUCT 16" DIAMETER, 17' LONG, FLANGE AT BOTH ENDS. STAINLESS STEEL.
P82	DW1624AJDKIT	2200				-0.0043	16.63	1575.63	1	SINGLE WALL DUCT ADJUSTABLE, 16" DIAMETER, 23.5' LONG, FLANGE AT ONE END WITH A 16" ADJUSTABLE COLLAR - STAINLESS STEEL.
P83 ASSEMBLED W/P80 D=S	DW1617ADIASY						16.57		1	DUCT ACCESS DOOR - INSULATED - USED WITH 16" DUCT - GREASE DAM INCLUDED - ASSEMBLY.
P84	DW16SUBRASY						3.18		1	DUCT SUPPORT BRACKET KIT, 16" DUCT, USED FOR HANGING DUCT. 12 GA STEEL, CLEAR ZINC COATING - 2 RINGS, 4 BRACKETS, & HARDWARE BAG 2.
P85	DW1411LT	1550				-0.0037	5.46	1449.93	1	SINGLE WALL DUCT 14" DIAMETER, 11' LONG, FLANGE AT BOTH ENDS. STAINLESS STEEL.
P86	DW1404LT	1550				-0.0013	2.25	1449.93	1	SINGLE WALL DUCT 14" DIAMETER, 4' LONG, FLANGE AT BOTH ENDS. STAINLESS STEEL.
P87	DW140AJDKIT	1550				-0.002	11.56	1449.93	1	SINGLE WALL DUCT ADJUSTABLE, 14" DIAMETER, 17.5' LONG, FLANGE AT ONE END WITH A 14" ADJUSTABLE COLLAR - STAINLESS STEEL.
P88	DW1416ADPEC	1550				-0.006	7.50	1449.93	1	SINGLE WALL DUCT ADAPTER, 14" DUCT DIA TO 16" DUCT DIA, ECCENTRIC ASSEMBLY.
P89	DW16TEASY	3100		1		-0.4728	19.23	2220.21	1	SINGLE WALL DUCT TEE, 16" DUCT, ASSEMBLY.
P90	DW1416ADPEC	1550				-0.006	7.50	1449.93	1	SINGLE WALL DUCT ADAPTER, 14" DUCT DIA TO 16" DUCT DIA, ECCENTRIC ASSEMBLY.
P91	DW1404C2D	1550				-0.001	2.47	1449.93	1	SINGLE WALL DUCT OFF SET COLLAR - 14" DIAMETER DUCT - 1/2" PITCH.
P92	DW1429LT	1550				-0.0091	13.62	1449.93	1	SINGLE WALL DUCT 14" DIAMETER, 29' LONG, FLANGE AT BOTH ENDS. STAINLESS STEEL.
P93	DW1424AJDKIT	1550								

DUCTWORK #1 TOP VIEW  
DUCT RUN



REVISIONS	
DESCRIPTION	DATE



www.captiveair.com  
www.captivesolutions.com  
1329 East Kemper Rd., Ste. 4210, Chalmers, OH, 45246 PHONE: (513) 860-5555 EMAIL: reg120@captair.com

Toast & Berry Duct (Liberty)  
7505 Gibson Street, Space D-115  
Liberty Township, OH, 45069

DATE: 10/11/2022  
DWG. # 5645824  
DRAWN BY: Jcirilli  
SCALE: NOT TO SCALE  
MASTER DRAWING

SHEET NO. 2

