

DUCTWORK #1 PARTS - JOB#5645824 DUCT RUN

TAG	PART #	CFM	GPM	ZONE	COVEREDBY	SP	WEIGHT	VELOCITY	QTY	DESCRIPTION
P1	DW1411LT						5.46		1	SINGLE WALL DUCT 14" DIAMETER, 11' LONG, FLANGE AT BOTH ENDS. STAINLESS STEEL.
P2	DW14TEASY			1			15.95		1	SINGLE WALL DUCT TEE, 14" DUCT, ASSEMBLY.
P3	DW1404C2D						2.47		1	SINGLE WALL DUCT OFF SET COLLAR - 14" DIAMETER DUCT - 1/2" PITCH.
P4	DW1429LT						13.62		1	SINGLE WALL DUCT 14" DIAMETER, 29' LONG, FLANGE AT BOTH ENDS. STAINLESS STEEL.
P5	DW1424AJDKIT						14.56		1	SINGLE WALL DUCT ADJUSTABLE, 14" DIAMETER, 23.5' LONG, FLANGE AT ONE END WITH A 14" ADJUSTABLE COLLAR - STAINLESS STEEL.
P6	DW1404C2D						2.47		1	SINGLE WALL DUCT OFF SET COLLAR - 14" DIAMETER DUCT - 1/2" PITCH.
P7	DW1416ADPEC13						7.53		1	SINGLE WALL DUCT ECCENTRIC ADAPTER, 14" DUCT DIA TO 16" DUCT DIA, ASSEMBLY - 430 STAINLESS STEEL.
P8	DW16TEASY			1			19.23		1	SINGLE WALL DUCT TEE, 16" DUCT, ASSEMBLY.
P9	DW1416ADPEC13						7.53		1	SINGLE WALL DUCT ECCENTRIC ADAPTER, 14" DUCT DIA TO 16" DUCT DIA, ASSEMBLY - 430 STAINLESS STEEL.
P10	DW1604C2D						2.73		1	SINGLE WALL DUCT OFF SET COLLAR - 16" DIAMETER DUCT - 1/2" PITCH.
P11	DW1647LT						24.89		1	SINGLE WALL DUCT 16" DIAMETER, 47' LONG, FLANGE AT BOTH ENDS. STAINLESS STEEL.
P12	DW16SUBBRASY						3.18		1	DUCT SUPPORT BRACKET KIT, 16" DUCT, USED FOR HANGING DUCT. 12 GA STEEL, CLEAR ZINC COATING. - 2 RINGS, 4 BRACKETS, & HARDWARE BAG 2.
P13	DW1647LT						24.89		1	SINGLE WALL DUCT 16" DIAMETER, 47' LONG, FLANGE AT BOTH ENDS. STAINLESS STEEL.
P14	DW1604C2D						2.73		1	SINGLE WALL DUCT OFF SET COLLAR - 16" DIAMETER DUCT - 1/2" PITCH.
P15	DW1645ASY						7.22		1	SINGLE WALL DUCT 45 DEGREE ELBOW, 16" DUCT, ASSEMBLY.
P16	DW1617LT						9.24		1	SINGLE WALL DUCT 16" DIAMETER, 17' LONG, FLANGE AT BOTH ENDS. STAINLESS STEEL.
P17	DW1618AJDKIT						13.19		1	SINGLE WALL DUCT ADJUSTABLE, 16" DIAMETER, 17.5' LONG, FLANGE AT ONE END WITH A 16" ADJUSTABLE COLLAR - STAINLESS STEEL.
P18	DW1645ASY						7.22		1	SINGLE WALL DUCT 45 DEGREE ELBOW, 16" DUCT, ASSEMBLY.
P19	DW1617LT						9.24		1	SINGLE WALL DUCT 16" DIAMETER, 17' LONG, FLANGE AT BOTH ENDS. STAINLESS STEEL.
P20	DW1630AJDKIT						20.06		1	SINGLE WALL DUCT ADJUSTABLE, 16" DIAMETER, 29.5' LONG, FLANGE AT ONE END WITH A 16" ADJUSTABLE COLLAR - STAINLESS STEEL.
P21	DW16TEASY			1			19.23		1	SINGLE WALL DUCT TEE, 16" DUCT, ASSEMBLY.
P22	DW1617ADKIT						4.59		1	DUCT ACCESS DOOR WITH HANDLE & GREASE DAM, FOR 16" DUCT USE 17" DOOR. STAINLESS STEEL.
P23	DW1623LT						12.32		1	SINGLE WALL DUCT 16" DIAMETER, 23' LONG, FLANGE AT BOTH ENDS. STAINLESS STEEL.
P24	DW1648AJDKIT						30.39		1	SINGLE WALL DUCT ADJUSTABLE, 16" DIAMETER, 47.5' LONG, FLANGE AT ONE END WITH A 16" ADJUSTABLE COLLAR - STAINLESS STEEL.
P25	DW2616TPDBEX						9.00		1	DUCT TO CURB TRANSITION 3/4" DOWN TURN, 26 1/2" CURB TO 16" DUCT, 16 GA ALUMINIZED. USED ON NCA16FA / NCA16HPFA & NCA18FA / NCA18HPFA TRANSITION PLATE DD IS 2700" DESIGNED FOR USE WITH EXHAUST FAN. NON-STANDARD PART.
P26	DW16SUBBRASY						3.18		1	DUCT SUPPORT BRACKET KIT, 16" DUCT, USED FOR HANGING DUCT. 12 GA STEEL, CLEAR ZINC COATING. - 2 RINGS, 4 BRACKETS, & HARDWARE BAG 2.
P27	DW14SUBBRASY						2.96		1	DUCT SUPPORT BRACKET KIT, 14" DUCT, USED FOR HANGING DUCT. 12 GA STEEL, CLEAR ZINC COATING. - 2 RINGS, 4 BRACKETS, & HARDWARE BAG 2.
P28	DW1415ADKIT						3.72		1	DUCT ACCESS DOOR WITH HANDLE & GREASE DAM, FOR 14" DUCT USE 15" DOOR. STAINLESS STEEL.
P29	DW1620ADPEC						12.00		1	SINGLE WALL DUCT ADAPTER, 16" DUCT DIA TO 20" DUCT DIA, ECCENTRIC ASSEMBLY.
P30	DW2011LT						7.77		1	SINGLE WALL DUCT 20" DIAMETER, 11' LONG, FLANGE AT BOTH ENDS. STAINLESS STEEL.
P31	DW20TEASY			1			26.16		1	SINGLE WALL DUCT TEE, 20" DUCT, ASSEMBLY.
P32	DW2015ASY						9.00		1	SINGLE WALL DUCT 15 DEGREE ELBOW, 20" DUCT, ASSEMBLY.
P33	DW2011LT						7.77		1	SINGLE WALL DUCT 20" DIAMETER, 11' LONG, FLANGE AT BOTH ENDS. STAINLESS STEEL.
P34	DW2018AJDKIT						16.46		1	SINGLE WALL DUCT ADJUSTABLE, 20" DIAMETER, 17.5' LONG, FLANGE AT ONE END WITH A 20" ADJUSTABLE COLLAR - STAINLESS STEEL.
P35	DW2015ASY						9.00		1	SINGLE WALL DUCT 15 DEGREE ELBOW, 20" DUCT, ASSEMBLY.
P36	DW2029LT						19.42		1	SINGLE WALL DUCT 20" DIAMETER, 29' LONG, FLANGE AT BOTH ENDS. STAINLESS STEEL.
P37	DW2048AJDKIT						37.95		1	SINGLE WALL DUCT ADJUSTABLE, 20" DIAMETER, 47.5' LONG, FLANGE AT ONE END WITH A 20" ADJUSTABLE COLLAR - STAINLESS STEEL.
P38	DW20TEASY			1			26.16		1	SINGLE WALL DUCT TEE, 20" DUCT, ASSEMBLY.
P39	DW2021ADKIT						6.59		1	DUCT ACCESS DOOR WITH HANDLE & GREASE DAM, FOR 20" DUCT USE 21" DOOR. STAINLESS STEEL.
P40	DW2035LT						23.51		1	SINGLE WALL DUCT 20" DIAMETER, 35' LONG, FLANGE AT BOTH ENDS. STAINLESS STEEL.
P41	DW2030AJDKIT						25.05		1	SINGLE WALL DUCT ADJUSTABLE, 20" DIAMETER, 29.5' LONG, FLANGE AT ONE END WITH A 20" ADJUSTABLE COLLAR - STAINLESS STEEL.
P42	DW3120TPDBEX						11.50		1	DUCT TO CURB TRANSITION 3/4" DOWN TURN, 31-1/2" CURB TO 20" DUCT, 16 GA ALUMINIZED. NON-STANDARD PART. FOR USE WITH EXHAUST FANS.
P43	DW20SUBBRASY						3.58		1	DUCT SUPPORT BRACKET KIT, 20" DUCT, USED FOR HANGING DUCT. 12 GA STEEL, CLEAR ZINC COATING. - 2 RINGS, 4 BRACKETS, & HARDWARE BAG 2.
P44	DW1620ADPEC						12.00		1	SINGLE WALL DUCT ADAPTER, 16" DUCT DIA TO 20" DUCT DIA, ECCENTRIC ASSEMBLY.
P45	DW1604C2D						2.73		1	SINGLE WALL DUCT OFF SET COLLAR - 16" DIAMETER DUCT - 1/2" PITCH.
P46	DW1630AJDKIT						20.06		1	SINGLE WALL DUCT ADJUSTABLE, 16" DIAMETER, 29.5' LONG, FLANGE AT ONE END WITH A 16" ADJUSTABLE COLLAR - STAINLESS STEEL.
P47	DW1635LT						18.67		1	SINGLE WALL DUCT 16" DIAMETER, 35' LONG, FLANGE AT BOTH ENDS. STAINLESS STEEL.
P48	DW1635LT						18.67		1	SINGLE WALL DUCT 16" DIAMETER, 35' LONG, FLANGE AT BOTH ENDS. STAINLESS STEEL.
P49	DW1604C2D						2.73		1	SINGLE WALL DUCT OFF SET COLLAR - 16" DIAMETER DUCT - 1/2" PITCH.
P50	DW16TEASY			1			19.23		1	SINGLE WALL DUCT TEE, 16" DUCT, ASSEMBLY.
P51	DW1611LT						6.16		1	SINGLE WALL DUCT 16" DIAMETER, 11' LONG, FLANGE AT BOTH ENDS. STAINLESS STEEL.
P52	DW1618AJDKIT						13.19		1	SINGLE WALL DUCT ADJUSTABLE, 16" DIAMETER, 17.5' LONG, FLANGE AT ONE END WITH A 16" ADJUSTABLE COLLAR - STAINLESS STEEL.
P53	DW1617ADKIT						4.59		1	DUCT ACCESS DOOR WITH HANDLE & GREASE DAM, FOR 16" DUCT USE 17" DOOR. STAINLESS STEEL.
P54	DW16SUBBRASY						3.18		1	DUCT SUPPORT BRACKET KIT, 16" DUCT, USED FOR HANGING DUCT. 12 GA STEEL, CLEAR ZINC COATING. - 2 RINGS, 4 BRACKETS, & HARDWARE BAG 2.
P55	DW1217LT						7.05		1	SINGLE WALL DUCT 12" DIAMETER, 17' LONG, FLANGE AT BOTH ENDS. STAINLESS STEEL.
P56	DW1290ASY						8.44		1	SINGLE WALL DUCT 90 DEGREE ELBOW, 12" DUCT, ASSEMBLY.
P57	DW1211LT						4.62		1	SINGLE WALL DUCT 12" DIAMETER, 11' LONG, FLANGE AT BOTH ENDS. STAINLESS STEEL.
P58	DW1218AJDKIT						9.90		1	SINGLE WALL DUCT ADJUSTABLE, 12" DIAMETER, 17.5' LONG, FLANGE AT ONE END WITH A 12" ADJUSTABLE COLLAR - STAINLESS STEEL.
P59	DW12TEASY			1			11.69		1	SINGLE WALL DUCT TEE, 12" DUCT, ASSEMBLY.
P60	DW1217LT						7.05		1	SINGLE WALL DUCT 12" DIAMETER, 17' LONG, FLANGE AT BOTH ENDS. STAINLESS STEEL.
P61	DW1204C1D						2.12		1	SINGLE WALL DUCT OFF SET COLLAR - 12" DIAMETER DUCT - 1/4" PITCH.
P62	DW1247LT						18.70		1	SINGLE WALL DUCT 12" DIAMETER, 47' LONG, FLANGE AT BOTH ENDS. STAINLESS STEEL.
P63	DW12SUBBRASY						2.76		1	DUCT SUPPORT BRACKET KIT, 12" DUCT, USED FOR HANGING DUCT. 12 GA STEEL, CLEAR ZINC COATING. - 2 RINGS, 4 BRACKETS, & HARDWARE BAG 2.
P64	DW1229LT						11.69		1	SINGLE WALL DUCT 12" DIAMETER, 29' LONG, FLANGE AT BOTH ENDS. STAINLESS STEEL.
P65	DW1230AJDKIT						15.04		1	SINGLE WALL DUCT ADJUSTABLE, 12" DIAMETER, 29.5' LONG, FLANGE AT ONE END WITH A 12" ADJUSTABLE COLLAR - STAINLESS STEEL.
P66	DW1223LT						9.41		1	SINGLE WALL DUCT 12" DIAMETER, 23' LONG, FLANGE AT BOTH ENDS. STAINLESS STEEL.
P67	DW1290ASY						8.44		1	SINGLE WALL DUCT 90 DEGREE ELBOW, 12" DUCT, ASSEMBLY.

DUCTWORK #1 PARTS - JOB#5645824 DUCT RUN

TAG	PART #	CFM	GPM	ZONE	COVEREDBY	SP	WEIGHT	VELOCITY	QTY	DESCRIPTION
P68	DW1247LT						18.70		1	SINGLE WALL DUCT 12" DIAMETER, 47' LONG, FLANGE AT BOTH ENDS. STAINLESS STEEL.
P69	DW1247LT						18.70		1	SINGLE WALL DUCT 12" DIAMETER, 47' LONG, FLANGE AT BOTH ENDS. STAINLESS STEEL.
P70	DW1223LT						9.41		1	SINGLE WALL DUCT 12" DIAMETER, 23' LONG, FLANGE AT BOTH ENDS. STAINLESS STEEL.
P71	DW1248AJDKIT						22.74		1	SINGLE WALL DUCT ADJUSTABLE, 12" DIAMETER, 47.5' LONG, FLANGE AT ONE END WITH A 12" ADJUSTABLE COLLAR - STAINLESS STEEL.
P72	DW1247LT						18.70		1	SINGLE WALL DUCT 12" DIAMETER, 47' LONG, FLANGE AT BOTH ENDS. STAINLESS STEEL.
P73	DW1247LT						18.70		1	SINGLE WALL DUCT 12" DIAMETER, 47' LONG, FLANGE AT BOTH ENDS. STAINLESS STEEL.
P74	DW1247LT						18.70		1	SINGLE WALL DUCT 12" DIAMETER, 47' LONG, FLANGE AT BOTH ENDS. STAINLESS STEEL.
P75	DW1247LT						18.70		1	SINGLE WALL DUCT 12" DIAMETER, 47' LONG, FLANGE AT BOTH ENDS. STAINLESS STEEL.
P76	DW1247LT						18.70		1	SINGLE WALL DUCT 12" DIAMETER, 47' LONG, FLANGE AT BOTH ENDS. STAINLESS STEEL.
P77	DW1245ASY						5.86		1	SINGLE WALL DUCT 45 DEGREE ELBOW, 12" DUCT, ASSEMBLY.
P78	DW1223LT						9.41		1	SINGLE WALL DUCT 12" DIAMETER, 23' LONG, FLANGE AT BOTH ENDS. STAINLESS STEEL.
P79	DW1248AJDKIT						22.74		1	SINGLE WALL DUCT ADJUSTABLE, 12" DIAMETER, 47.5' LONG, FLANGE AT ONE END WITH A 12" ADJUSTABLE COLLAR - STAINLESS STEEL.
P80	DW1223LT						9.41		1	SINGLE WALL DUCT 12" DIAMETER, 23' LONG, FLANGE AT BOTH ENDS. STAINLESS STEEL.
P81	DW1247LT						18.70		1	SINGLE WALL DUCT 12" DIAMETER, 47' LONG, FLANGE AT BOTH ENDS. STAINLESS STEEL.
P82	DW1204C1D						2.12		1	SINGLE WALL DUCT OFF SET COLLAR - 12" DIAMETER DUCT - 1/4" PITCH.
P83	DW1290ASY						8.44		1	SINGLE WALL DUCT 90 DEGREE ELBOW, 12" DUCT, ASSEMBLY.
P84	DW1217LT						7.05		1	SINGLE WALL DUCT 12" DIAMETER, 17' LONG, FLANGE AT BOTH ENDS. STAINLESS STEEL.
P85	DW1229LT						11.69		1	SINGLE WALL DUCT 12" DIAMETER, 29' LONG, FLANGE AT BOTH ENDS. STAINLESS STEEL.
P86	DW1230AJDKIT						15.04		1	SINGLE WALL DUCT ADJUSTABLE, 12" DIAMETER, 29.5' LONG, FLANGE AT ONE END WITH A 12" ADJUSTABLE COLLAR - STAINLESS STEEL.
P87	DW1912TPDBEX						7.50		1	DUCT TO CURB TRANSITION 3/4" DOWN TURN, 19-1/2" CURB TO 12" DUCT, 16 GA ALUMINIZED STEEL. FOR USE WITH EXHAUST FANS.
P88	DW12SUBBRASY						2.76		1	DUCT SUPPORT BRACKET KIT, 12" DUCT, USED FOR HANGING DUCT. 12 GA STEEL, CLEAR ZINC COATING. - 2 RINGS, 4 BRACKETS, & HARDWARE BAG 2.
P89	DW12SUBBRASY						2.76		1	DUCT SUPPORT BRACKET KIT, 12" DUCT, USED FOR HANGING DUCT. 12 GA STEEL, CLEAR ZINC COATING. - 2 RINGS, 4 BRACKETS, & HARDWARE BAG 2.
P90	DW12SUBBRASY						2.76		1	DUCT SUPPORT BRACKET KIT, 12" DUCT, USED FOR HANGING DUCT. 12 GA STEEL, CLEAR ZINC COATING. - 2 RINGS, 4 BRACKETS, & HARDWARE BAG 2.
P91	DW12SUBBRASY						2.76		1	DUCT SUPPORT BRACKET KIT, 12" DUCT, USED FOR HANGING DUCT. 12 GA STEEL, CLEAR ZINC COATING. - 2 RINGS, 4 BRACKETS, & HARDWARE BAG 2.
P92	DW12SUBBRASY						2.76		1	DUCT SUPPORT BRACKET KIT, 12" DUCT, USED FOR HANGING DUCT. 12 GA STEEL, CLEAR ZINC COATING. - 2 RINGS, 4 BRACKETS, & HARDWARE BAG 2.
P93	DW2004C2D						3.46		1	SINGLE WALL DUCT OFF SET COLLAR - 20" DIAMETER DUCT - 1/2" PITCH.
P94	DW2004C2D						3.46		1	SINGLE WALL DUCT OFF SET COLLAR - 20" DIAMETER DUCT - 1/2" PITCH.
P95	DW16SUBBRASY						3.18		1	DUCT SUPPORT BRACKET KIT, 16" DUCT, USED FOR HANGING DUCT. 12 GA STEEL, CLEAR ZINC COATING. - 2 RINGS, 4 BRACKETS, & HARDWARE BAG 2.
	3M-2000PLUS						0.80		22	DUCT - 3M FIRE BARRIER 2000 PLUS SILICONE - USED AS SEALANT TO SEAL DUCT JOINTS.
	DW12CLASY						0.94		32	DUCT "V" CLAMP WITH NEW DESIGN 14 GA BRACKETS, 12" DUCT, ASSEMBLY.
	DW14CLASY						1.06		9	DUCT "V" CLAMP WITH NEW DESIGN 14 GA BRACKETS, 14" DUCT, ASSEMBLY.
	DW16CLASY						1.18		27	DUCT "V" CLAMP WITH NEW DESIGN 14 GA BRACKETS, 16" DUCT, ASSEMBLY.
	DW20CLASY						1.41		16	DUCT "V" CLAMP WITH NEW DESIGN 14 GA BRACKETS, 20" DUCT, ASSEMBLY.
TOTAL WEIGHT							1195.39			

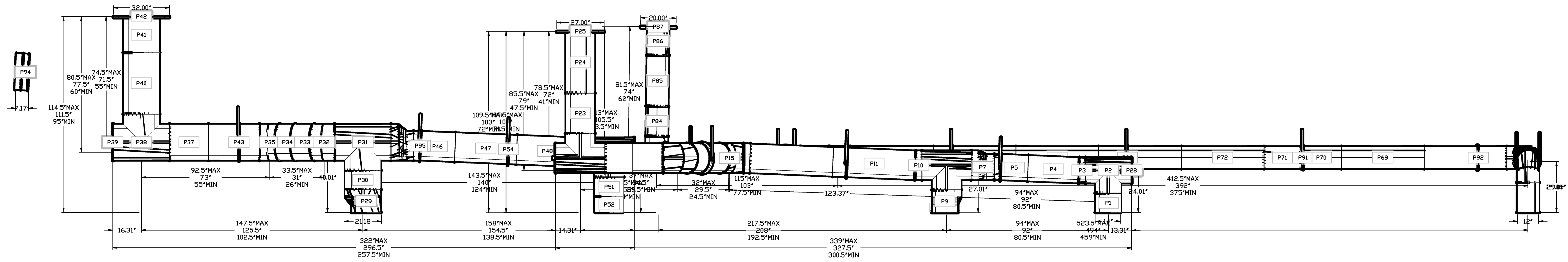
REVISIONS

DESCRIPTION	DATE

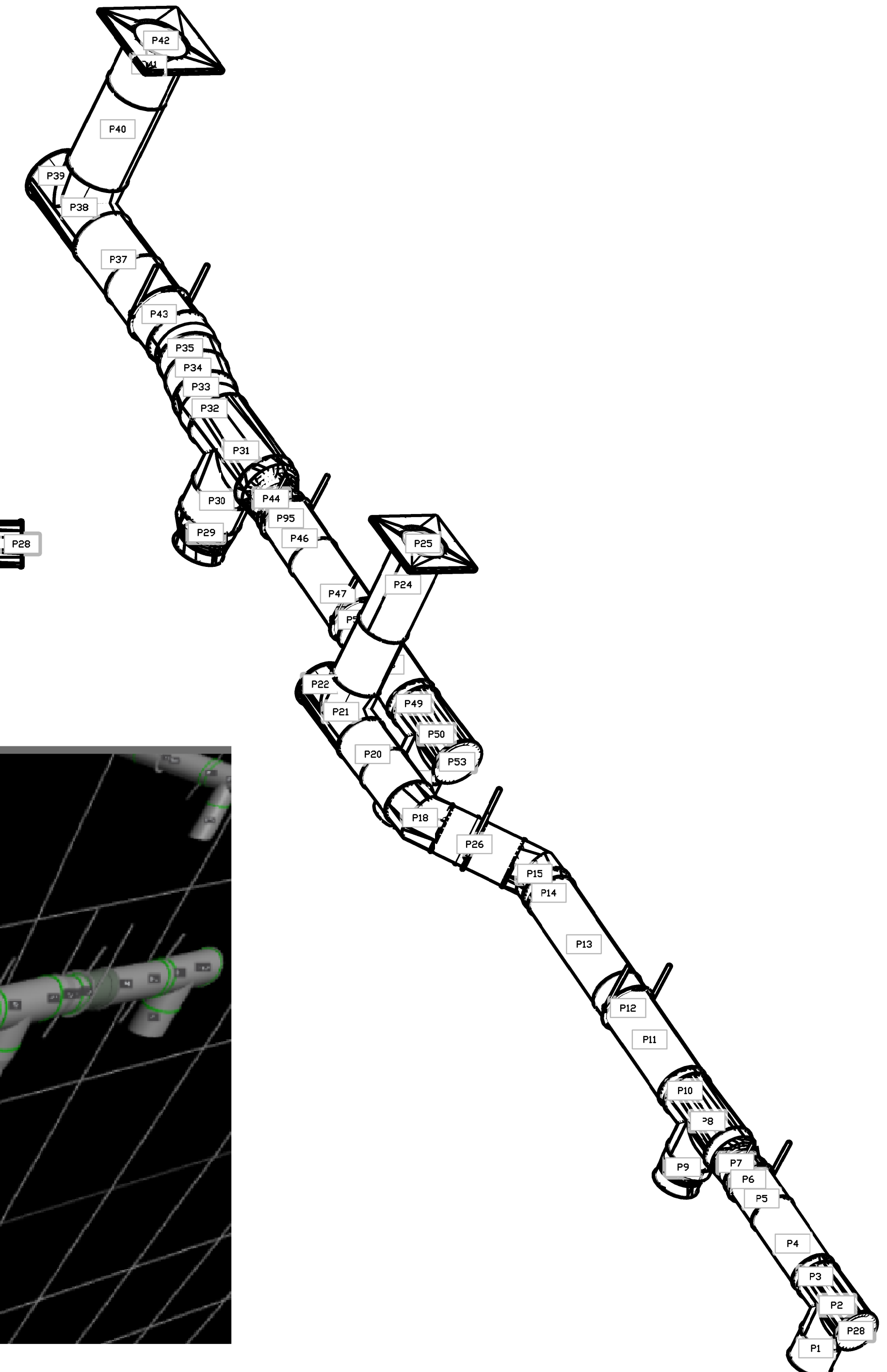


Toast & Berry Duct (Liberty)
 7505 Gibson Street, Space D-115
 Liberty Township, OH, 45069

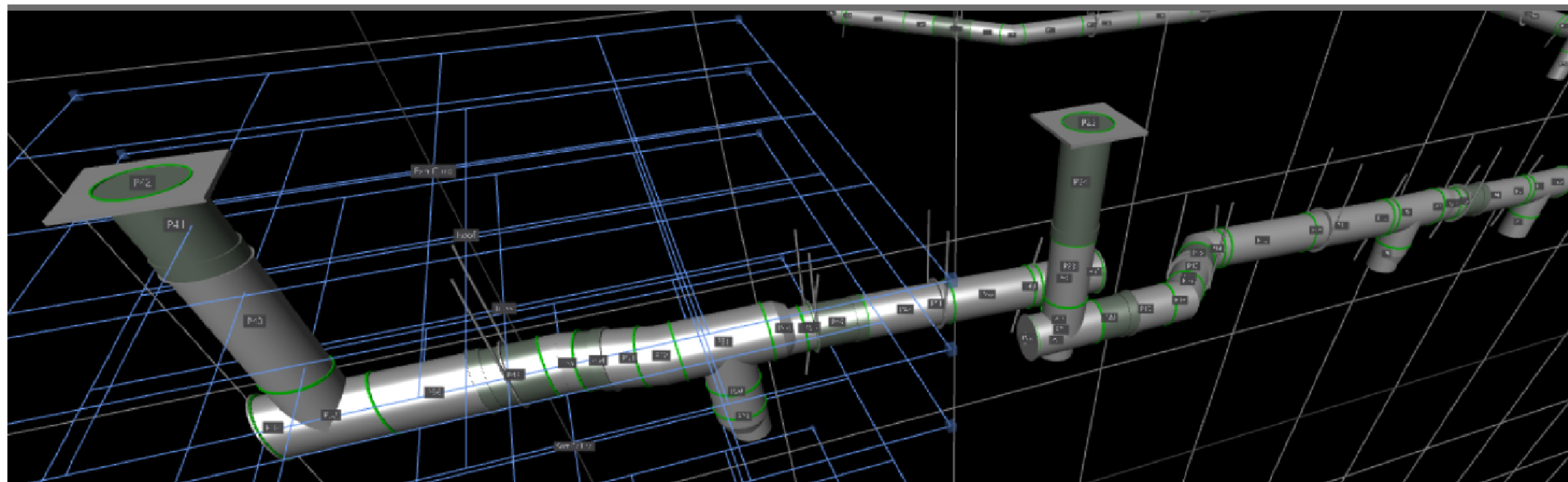
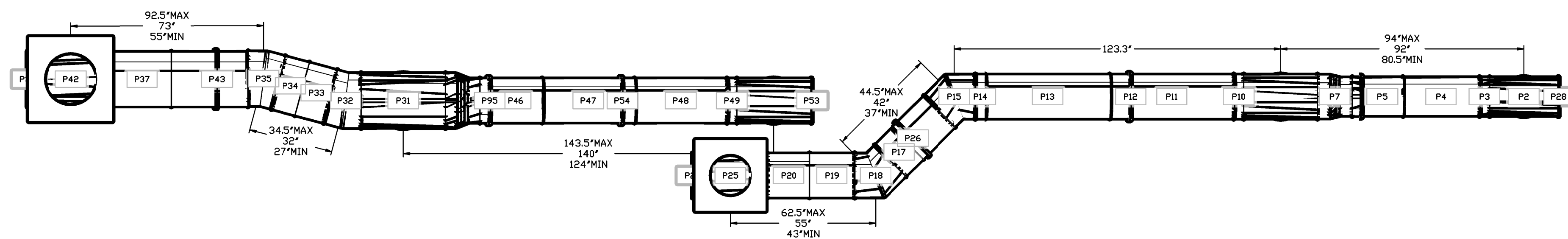
DUCTWORK #1 FRONT VIEW
DUCT RUN



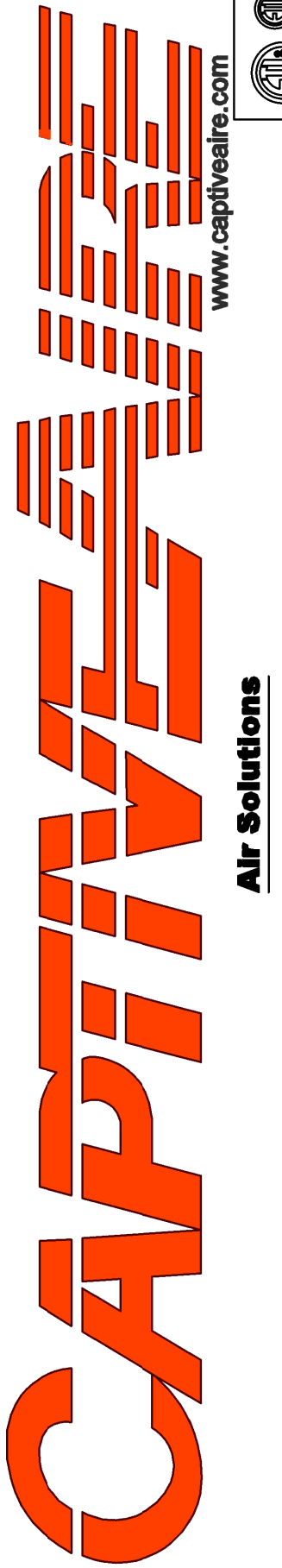
DUCTWORK #1 SE VIEW
DUCT RUN



DUCTWORK #1 TOP VIEW
DUCT RUN



REVISIONS	
DESCRIPTION	DATE



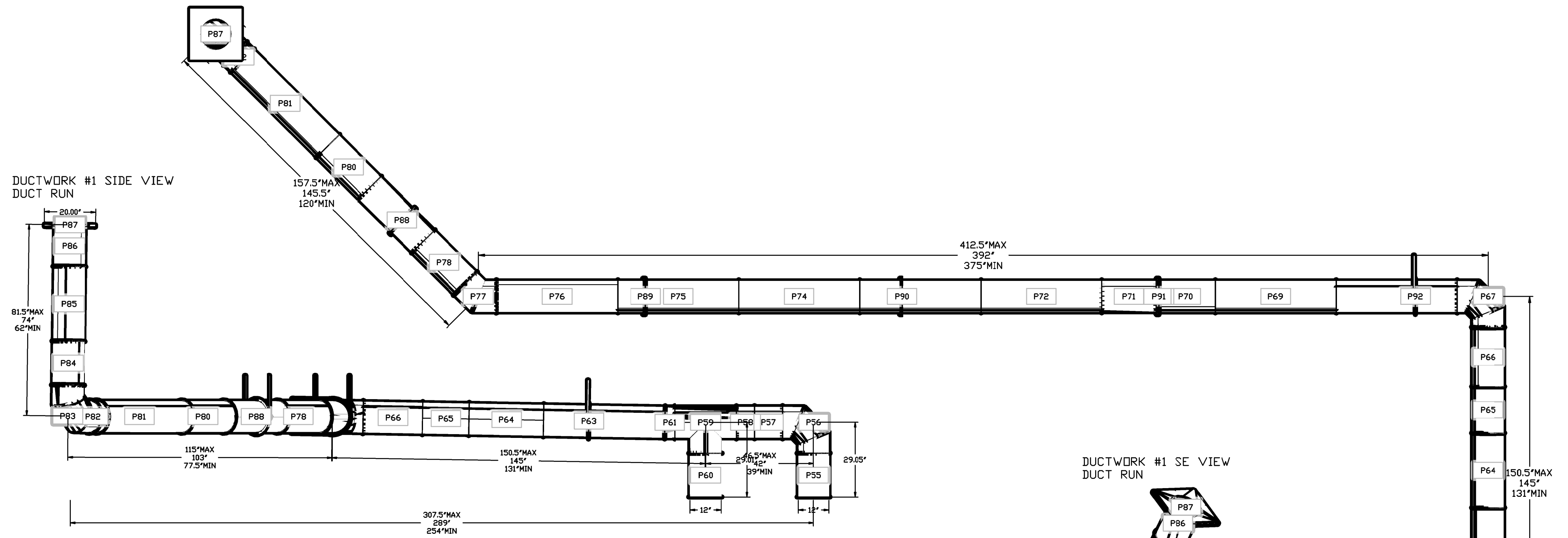
www.captiveair.com
1328 East Kemper Rd., Sta. 4210, Channahon, OH, 45246 PHONE: (613) 860-5555 EMAIL: req12@capthre.com

Toast & Berry Duct (Liberty)
7505 Gibson Street, Space D-115
Liberty Township, OH, 45069

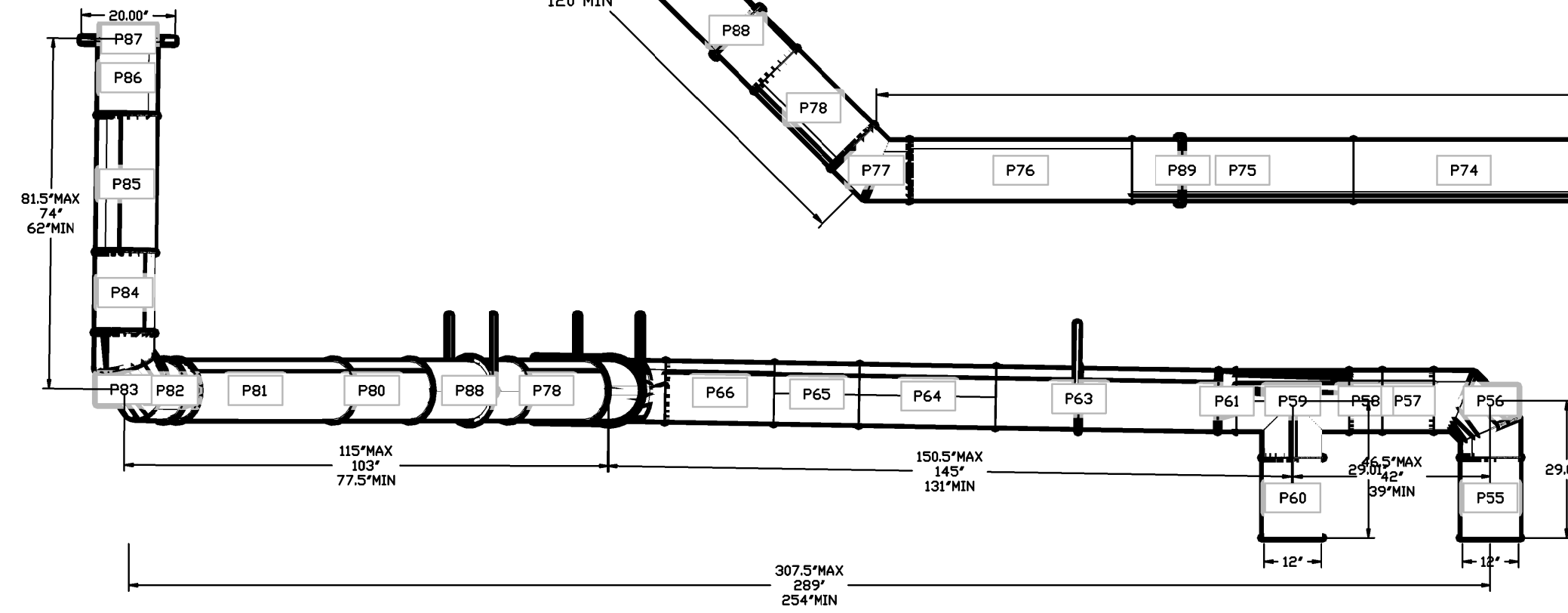
DATE: 2/28/2023
DWG.#: 5645824
DRAWN BY: jcirilli
SCALE: NOT TO SCALE
MASTER DRAWING

SHEET NO. 3

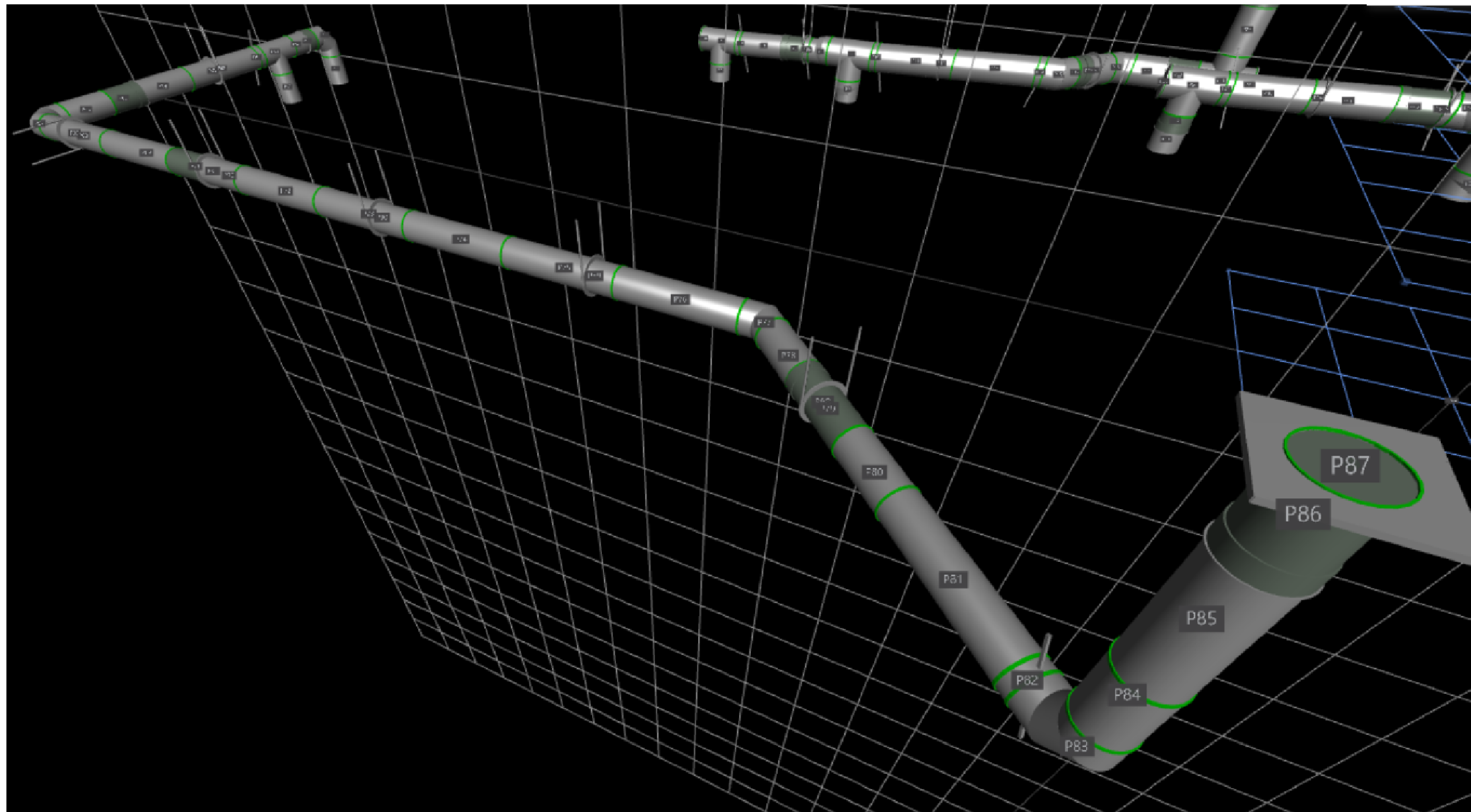
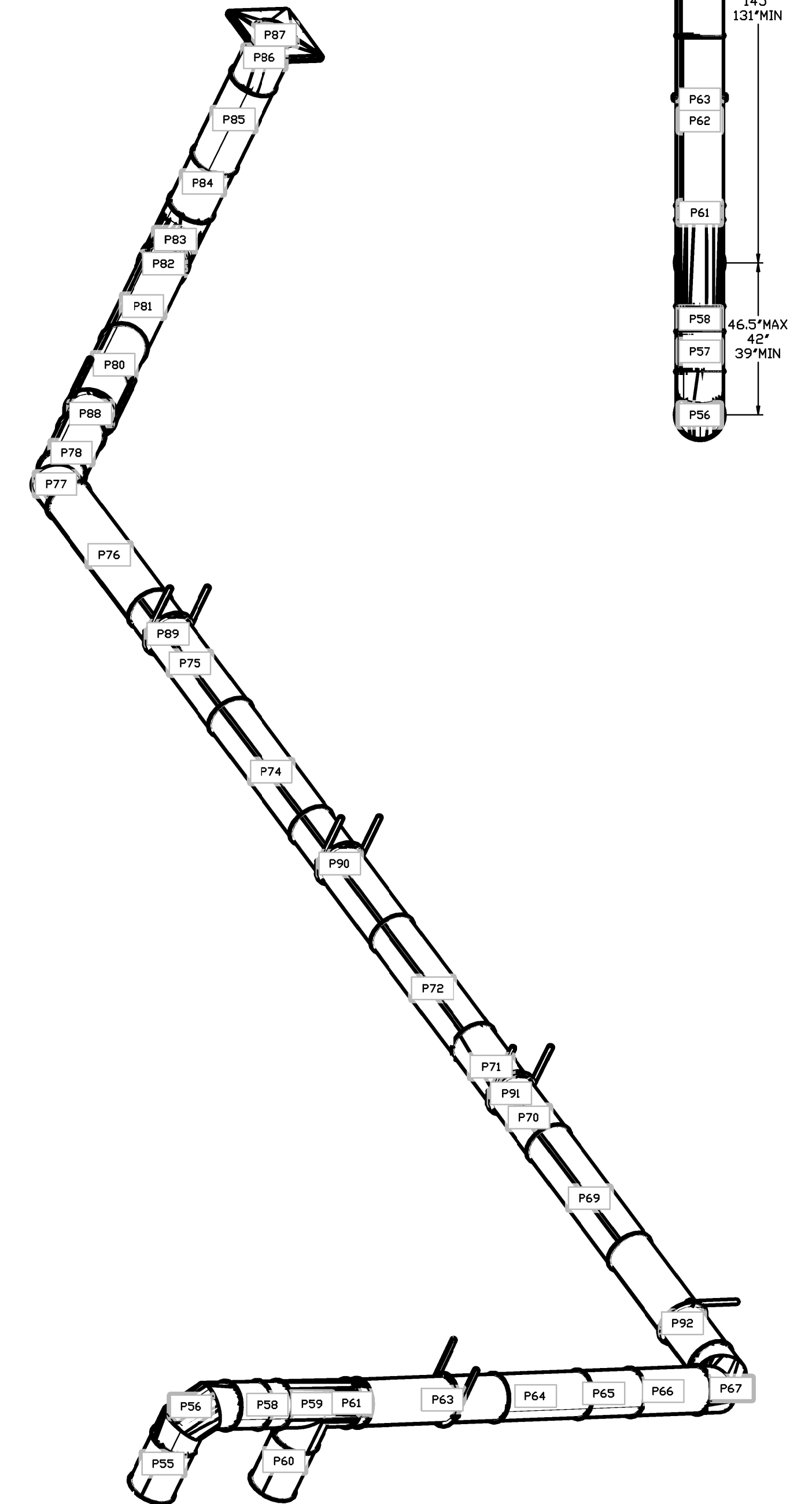
DUCTWORK #1 TOP VIEW
DUCT RUN



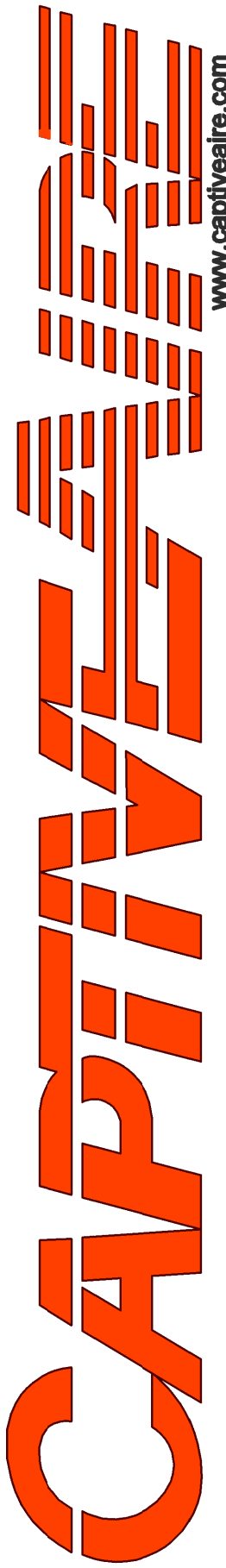
DUCTWORK #1 SIDE VIEW
DUCT RUN



DUCTWORK #1 SE VIEW
DUCT RUN



REVISIONS	
DESCRIPTION	DATE


CAPTIVE
 Air Solutions
 1328 East Kemper Rd., Ste. 4210, Channahon, OH, 45246 PHONE: (613) 880-5555 EMAIL: req12@captivair.com

Toast & Berry Duct (Liberty)
 7505 Gibson Street, Space D-115
 Liberty Township, OH, 45069

DATE: 2/28/2023
DWG.#: 5645824
DRAWN BY: jcirilli
SCALE: NOT TO SCALE
MASTER DRAWING

SHEET NO.
 4