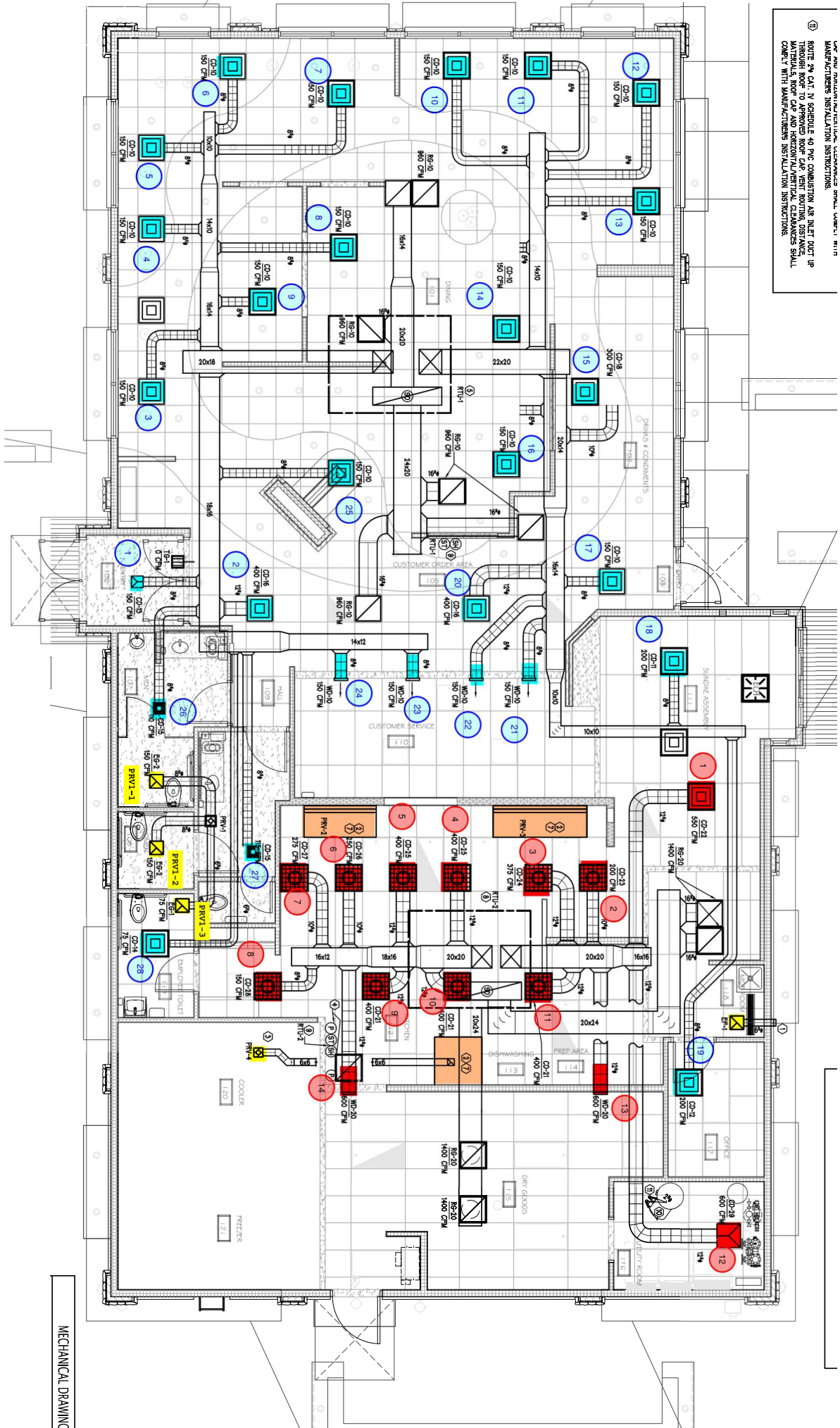


1. SEE THE PROJECT MANUAL FOR THE USE, MAINTENANCE, REPAIR, AND REPLACEMENT OF THE MECHANICAL SYSTEMS.
 2. THE MECHANICAL SYSTEMS SHALL BE INSTALLED IN ACCORDANCE WITH THE MANUFACTURER'S INSTALLATION INSTRUCTIONS.
 3. THE MECHANICAL SYSTEMS SHALL BE INSTALLED IN ACCORDANCE WITH THE MANUFACTURER'S INSTALLATION INSTRUCTIONS.
 4. THE MECHANICAL SYSTEMS SHALL BE INSTALLED IN ACCORDANCE WITH THE MANUFACTURER'S INSTALLATION INSTRUCTIONS.



MECHANICAL DRAWING INDEX