

Direct Drive Upblast Centrifugal Roof Exhaust Fan

MARK INFORMATION		FAN INFORMATION						MOTOR INFORMATION					
QTY	MARK	MODEL	VOLUME (CFM)	TOTAL EXTERNAL SP (IN WG)	FAN RPM	OPERATING POWER (HP)	WEIGHT (LB.)	SIZE (HP)	V/C/P	ENCLOSURE	MOTOR RPM	WINDINGS	NEC FLA*
1	EF-1 (Hood-1)	XCUE-160-VG	2,550	1.2	1,330	0.87	106	2	208/60/1	TF	1725	1	13.2

\*NEC FLA - Based on table 430.250 or 430.248 of National Electrical Code 2020. Actual motor FLA may vary for sizing thermal overload, consult factory"

EF-1 (Hood-1) : SELECTED OPTIONS AND ACCESSORIES

One piece fully welded windband  
 Tapered bushing wheel hub  
 Breather tube outlet area min. 4.4 sq. in. (sizes 99-480), 2.0 sq. in. (sizes 60-95)  
 Min. windband material thickness: 0.051" aluminum (060-240), 0.064" aluminum (240HP, 240XP), 0.080" aluminum (sizes 300-480)  
 Larger Curb Cap Size - 26 Square  
 UL/cUL 705 Listed - Supplement SC - "Power Ventilators for Restaurant Exh. Appliances" (Formerly UL 762)  
 Switch, NEMA-3R, Toggle,  
 Aluminum Wheel Material

**SUBMITTAL REVIEW STAMP**

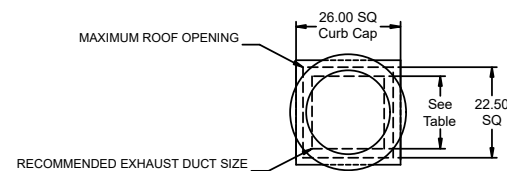
- NO EXCEPTION TAKEN
- REVISE AND RESUBMIT
- APPROVED AS NOTED
- REJECTED

Corrections or comments made on the shop drawings during this review do not relieve contractor from compliance with requirements of the drawings and specifications. This review is only for general conformance with the design concept of the project and general compliance with the information given in the contract documents. The contractor is responsible for: confirming and correlating all quantities and dimensions; selecting fabrication processes and techniques of construction; coordinating work with that of all other trades; and performing work in a safe and satisfactory manner.

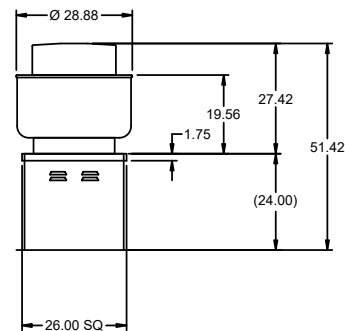
**Blanchard AE Group, LC.**

Date: 11-25-2024 By: Isaac Dunn

**\*PROVIDE CURB FOR MAKE-UP AIR UNIT.**

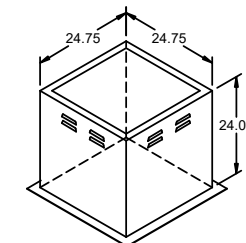


DUCT TYPE	SIZE
STANDARD	18 SQ
FIRE-WRAPPED	12 SQ



DUCT DIMENSIONS ARE LARGEST POSSIBLE DUCT TO FIT THROUGH CURB. CONSULT SYSTEM DESIGN ENGINEER FOR RECOMMENDED DUCT SIZE.

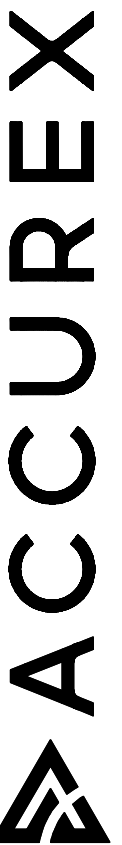
OVERALL HEIGHT MAY BE GREATER DEPENDING ON MOTOR, ADAPTER, AND/OR HINGE BASE.



PROJECT  
11/21/2024  
MARK  
CHIPOTLE-HORN LAKE, MS 5591

MARK  
EF-1 (HOOD-1)

DIRECT CHAIN ACX  
 JOE - AYUB  
 JOE.AYUB@ACCUREX.COM  
 (857)272-8727



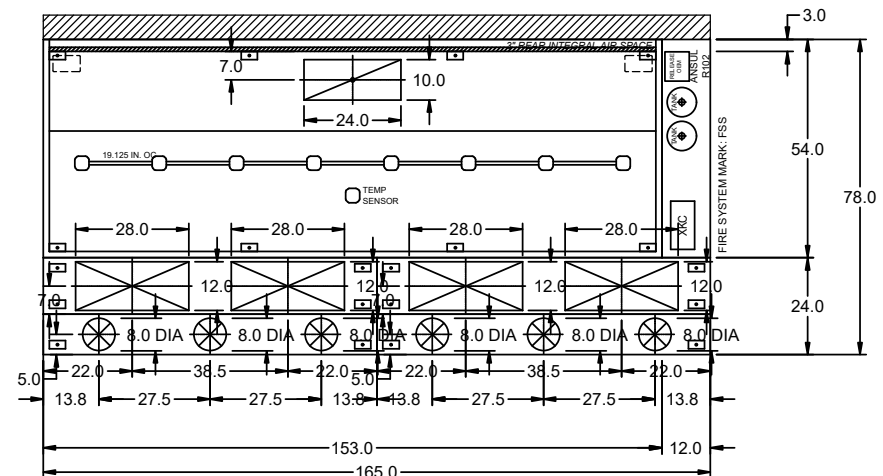
HOOD INFORMATION																	
HOOD NO.	MARK	MODEL	HOOD DIMENSIONS (IN.)			HOOD CONSTR.	COOKING LOAD / DUTY RATING	EXHAUST					SUPPLY		HANGING WEIGHT LBS.	SECTION LOCATION	
			LENGTH	WIDTH	HEIGHT			TOTAL CFM	COLLAR(S)			MUA CFM	AC CFM				
1	HOOD-1	XXEW-153-S	153	54	24	430 SS WHERE EXPOSED	HEAVY	2550	10	24		2550	0.483	1300	700	732	SINGLE

HOOD INFORMATION														
HOOD NO.	MARK	LIGHTING DETAILS				GREASE FILTRATION DETAILS				UTILITY CABINET(S)				
		FIXTURE TYPE	BULB / LAMP INFO	QTY	FOOT CANDLES	TYPE / MODEL MATERIAL	QTY	SIZE (IN.)	LOCATION	FIRE SYSTEM	SIZE	MODEL	CONTROLS	INTERFACE
1	HOOD-1	INCANDESCENT (GLOBE)	100W A19 (BULBS NOT INCL.)	8	54.77	X-TRACTOR (SPARK ARRESTOR INCL.) STAINLESS STEEL	2	16	20	RIGHT	ANSUL R102	6	XKC	TOUCHSCREEN

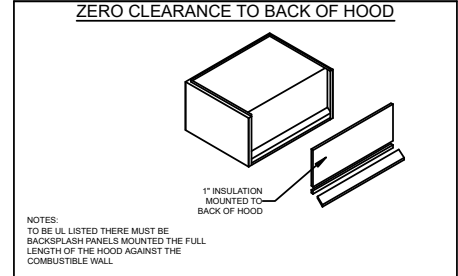
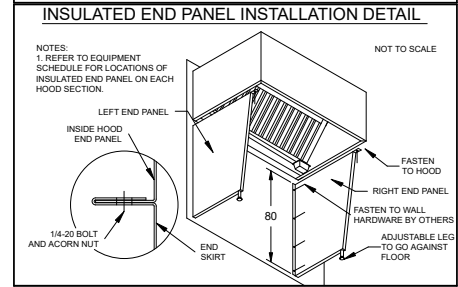
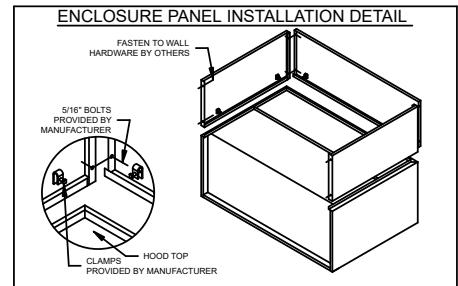
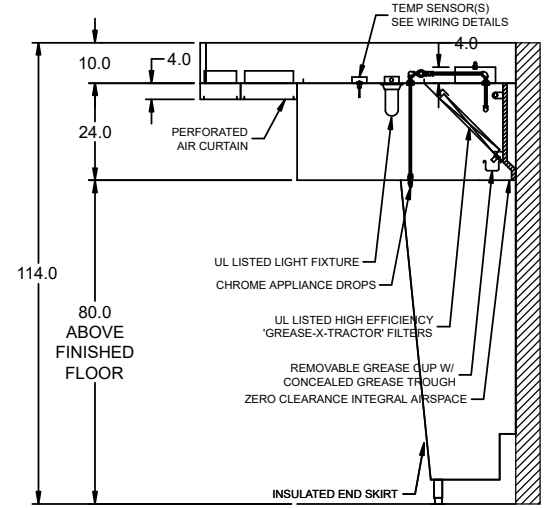
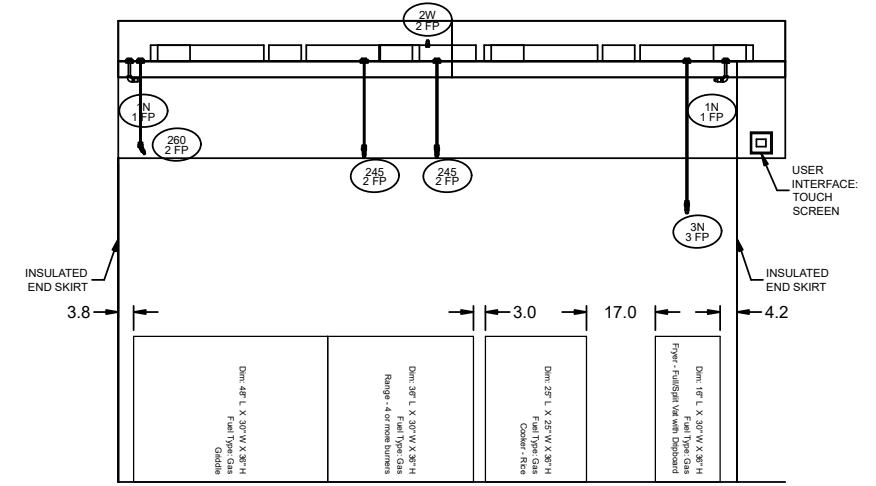
SUPPLY PLENUM INFORMATION																		
HOOD NO.	MARK	POS.	TYPE	SIZE (IN.)			INSULATED	DAMPER(S)	LED LIGHT(S)		TOTAL CFM	TOTAL S.P.	COLLARS					
				L	W	H			SUPPLIED	QTY			TYPE	MOUNTING	QTY	W	L	DIA.
1	HOOD-1	FRONT	SPLIT ASF	82.5	14	4	NO	NO		650	0	MUA	FACTORY	2	12	28	325	139
				82.5	10	4	YES	YES		350	0.02	AC	FACTORY	3			117	335
1	HOOD-1	FRONT	SPLIT ASF	82.5	14	4	NO	NO		650	0	MUA	FACTORY	2	12	28	325	139
				82.5	10	4	YES	YES		350	0.02	AC	FACTORY	3			117	335

**HOOD OPTIONS**

- UL 710 LISTED W/ OUT EXHAUST FIRE DAMPER - UL #R25625
- BACK INTEGRAL AIR SPACE - 3 IN WIDE - ZERO CLEARANCE
- 10 IN HIGH CEILING ENCLOSURES - FRONT LEFT RIGHT - FIELD INSTALLED
- FACTORY MOUNTED EXHAUST COLLAR(S)
- LEFT INSULD END PNL W/ ADJ LEG 80 IN HIGH 27.00 IN TOP WIDTH 21.0 IN BOTTOM WIDTH
- RIGHT INSULD END PNL W/ ADJ LEG 80 IN HIGH 27.00 IN TOP WIDTH 21.0 IN BOTTOM WIDTH
- PERFORMANCE ENHANCING LIP (PEL) TECHNOLOGY
- STANDING SEAM CONSTRUCTION FOR SUPERIOR STRENGTH

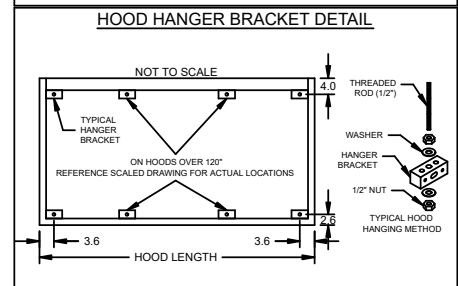
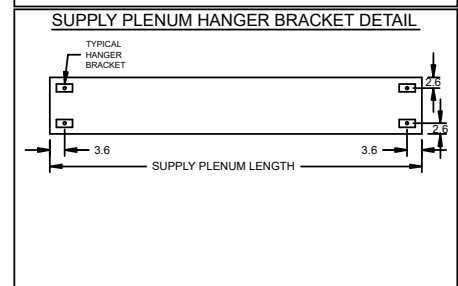


FIRE (PIPING/DROPS/NOZZLES/ETC.)  
SUBJECT TO CHANGE. AS-BUILT  
DRAWINGS CAN BE PROVIDED AT  
TIME OF ORDER AND INCLUDED  
WITH PRODUCT SHIPMENT



**HOOD HANGING HEIGHT FOR FIRE SYSTEMS**  
VERIFICATION OF HOOD HANGING HEIGHT ABOVE FINISHED FLOOR (A.F.F.) IS REQUIRED FOR CORRECT PLACEMENT OF FIRE SYSTEM NOZZLES.

- RECOMMENDED HANGING HEIGHT = 80" FROM FINISHED FLOOR TO LOWER FRONT EDGE OF HOOD.
- OTHER HANGING HEIGHT = \* FROM FINISHED FLOOR TO LOWER EDGE OF HOOD.



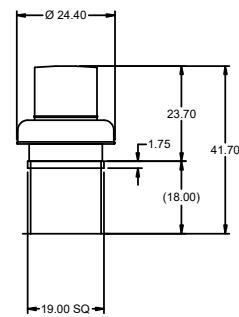
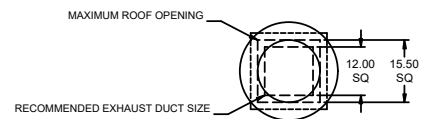
Direct Drive Centrifugal Roof Exhaust Fan

MARK INFORMATION		FAN INFORMATION						MOTOR INFORMATION					
QTY	MARK	MODEL	VOLUME (CFM)	TOTAL EXTERNAL SP (IN WG)	FAN RPM	OPERATING POWER (HP)	WEIGHT (LB.)	SIZE (HP)	V/C/P	ENCLOSURE	MOTOR RPM	WINDINGS	NEC FLA*
1	EF-2 (Restroom)	XRED-097-VG	150	0.6	1,330	0.05	43	0.25	115/60/1	TN	1725	1	5.8

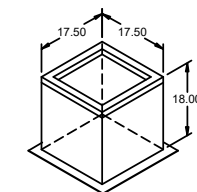
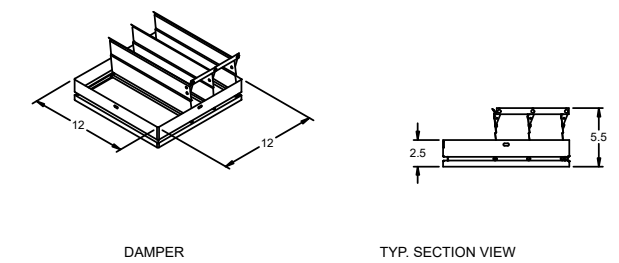
\*NEC FLA - Based on table 430.250 or 430.248 of National Electrical Code 2020. Actual motor FLA may vary for sizing thermal overload, consult factory"

EF-2 (Restroom) : SELECTED OPTIONS AND ACCESSORIES

Standard Curb Cap Size - 19 Square  
 UL/cUL 705 Listed - "Power Ventilators"  
 Switch, NEMA-1, Toggle,  
 Damper Shipped Loose, BD-100-PB-12X12, Gravity Operated, Not Coated, Nominal Size  
 Birdscreen: Galvanized, nom. 84% Free Area  
 Conduit Chase Qty 1



DUCT DIMENSIONS ARE LARGEST POSSIBLE DUCT TO FIT THROUGH CURB.  
 CONSULT SYSTEM DESIGN ENGINEER FOR RECOMMENDED DUCT SIZE.  
 OVERALL HEIGHT MAY BE GREATER DEPENDING ON MOTOR, ADAPTER, AND/OR  
 HINGE BASE.



PROJECT  
11/21/2024

CHIPOTLE-HORN LAKE, MS 5591

MARK  
EF-2 (RESTROOM)

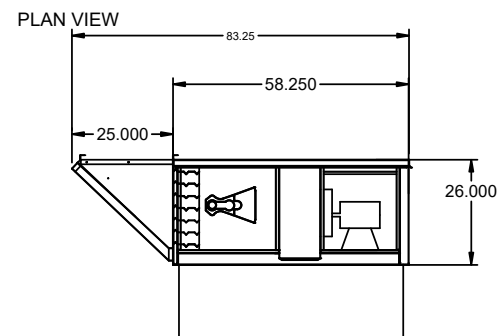
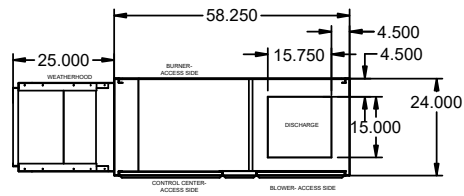
DIRECT CHAIN ACX  
 JOE AYOUB  
 JOE.AYOUB@ACCUREX.COM  
 (857)272-8727

**ACCUREX**

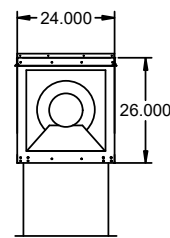


UL LISTED  
 COMMERCIAL ROOF EXHAUST FAN

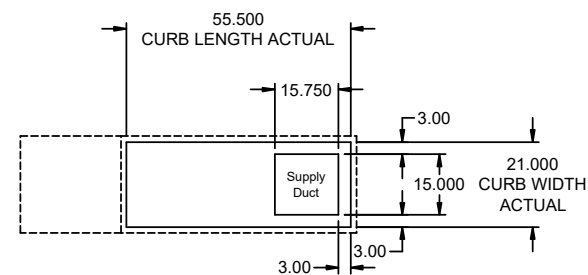
EQUIPMENT SCHEDULE										OPTIONS AND ACCESSORIES									
<b>Tempered Make-Up Air Unit</b>										Air Flow Arrangement: Outdoor Air Only Weatherhood: Aluminum Mesh, 16x20x2 - (2) Dampers: Inlet Outdoor Air Intake Position: End Discharge Position: Bottom Coating: Galvanized Insulation: Double Wall - Tempering On Supply Fan Control: Vari-Green ECM Vari-Green Control: Dial on Motor Access Side: Right-Hand Unit Weight: 421 lb Control Center Heat Inlet Air Sensor External Cooling Lockout Relay Unit Controls: Terminal Strip Temperature Control: Discharge Direct Gas Options/Accessories Approvals: ETL FM Compliant Flame Sensing: Flame Rod Ignition Control: Pilot									
Qty	Accurex Model	Volume	External SP	Total SP	MCA	MOP	Weight	SCCR	Mark: MAU-1										
1	XDGX-P115-H05-VG	1,300 CFM	0.5 in. wg	1,446 in. wg	21.3	35	421 lb	5kA											
Motor Information																			
Size	V/CP	Enclosure	Motor with Shaft Grounding	Motor RPM	Operating Power														
1 hp	115/60/1	ODP	No	1725	0.68 hp														
Heating																			
Type	Gas Type	Temperature	Energy	Connection	Building	Control	Gas Pressure												
Direct Gas	Natural	Winter DB   Max Δ   Max LAT	Input   Output   Efficiency	Gas (IN)	Pressure	Access	Min   Max												
		10.0 F   60.0 F   70.0 F	91.6 MBH   84.2 MBH   92%	3/4"	1/2 PSI	Right Hand	7 in. wg   0.5 PSI												



ELEVATION VIEW



END VIEW



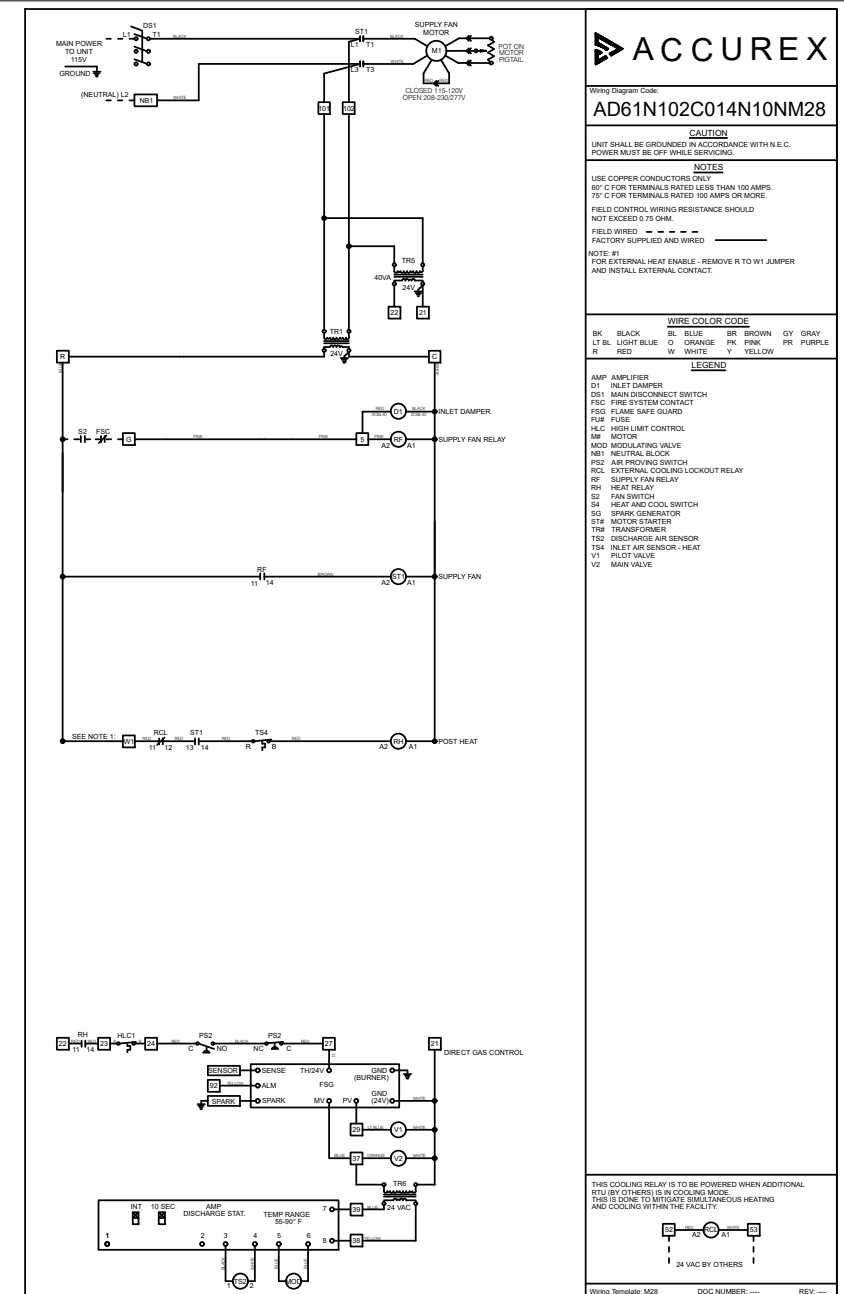
FOOTPRINT

NOTE: Roof Opening Requirements:

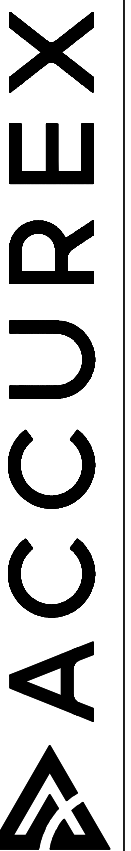
Minimum Roof Opening: The minimum roof opening size is the illustrated duct diameter plus 0.25 in. on all sides.  
For example: If the duct size is 14 x 14 in. square, the minimum roof opening size is 14.5 x 14.5 in. square.

Maximum Roof Opening: There must be a minimum perimeter of 1.75 in. between the roof opening and the roof curb.  
For example: If the roof curb is 75 x 30 in. square, the maximum roof opening is 71.5 x 26.5 in. inches square.

NOTE: The weatherhood and filter sections of the make-up air unit are not supported by the curb.  
This is by design, in order to help alleviate water infiltration issues. MUA Unit supports are shipped loose with unit.



DIRECT CHAIN ACX  
JOE AYUB  
JOE.AYUB@ACCUREX.COM  
(857)272-8727



PROJECT: 11/21/2024 CHIPOTLE-HORN LAKE, MS 5591

MARK

MAU-1



SECTION 15732 - PACKAGED ROOFTOP AIR-CONDITIONING UNITS

PART 1 - GENERAL

1.1 SECTION REQUIREMENTS

- A. Submittals: Product Data and Shop Drawings.
- B. Comply with ASHRAE 15.
- C. EER: Equal to or greater than prescribed by the energy code adopted by the Authority Having Jurisdiction.
- D. Warranties: Submit a written warranty, signed by the manufacturer, agreeing to the repair or replacement of components that fail within 5 years of Substantial Completion.

PART 2 - PRODUCTS

2.1 PACKAGED UNITS, 5 TO 20 TONS

- A. Factory assembled and tested, consisting of compressors, condensers, evaporator coils, condenser and evaporator fans, refrigeration and temperature controls, filters, and dampers.
  - 1. Refer to Rooftop Heating/Cooling Unit Schedule on drawing M600 for capacities, and manufacturers.
  - 2. Evaporator Fans: Belt or direct driven, forward curved centrifugal.
  - 3. Exhaust/Relief Fans: Direct drive, forward curved centrifugal or propeller.
  - 4. Condenser Fans: Direct drive propeller.
  - 5. Refrigerant Coils: Aluminum fins and copper coil.
  - 6. Compressors: Serviceable hermetic or fully hermetic, with safety controls, hot gas bypass, and timed off controls.
  - 7. Heat Exchangers: Gas fired, with gas controls, electronic ignition, high limit cutout, and forced draft proving switch.
  - 8. Economizer controls (Comparative Enthalpy, 100% capacity).
  - 9. Smoke Detectors: Photoelectric in supply and/or return as called for in schedule on sheet M600.
  - 10. Operating Controls: Two stage heating and two stage cooling on units 7-1/2 tons and over.
  - 11. Roof curb.
  - 12. Control Wiring from T-stat to rooftop unit: Shall be 18ga / 7 conductor, rated for plenum applications.
  - 13. Control Wiring from T-stat to remote sensor: Shall be a separate 18ga / 2 conductor shielded, rated for plenum applications.

PART 3 - EXECUTION

3.1 INSTALLATION

- A. Install units level and plumb and firmly anchored.
- B. Connect gas piping to burner with pipe same size as gas train inlet, and provide union with sufficient clearance for burner removal and service.
- C. Install ducts to termination in roof mounting frames. Terminate ducts through roof structure.
- D. Connect units to wiring systems and to ground.

END OF SECTION 15732

SECTION 15810 - DUCTS AND ACCESSORIES

PART 1 - GENERAL

1.1 SECTION REQUIREMENTS

- A. Submittals: Product Data for fire and smoke dampers.
- B. Comply with NFPA 90A for systems serving spaces more than 25,000 cu. ft. in volume or building Types II, IV, and V construction more than 3 stories in height.
- C. Comply with NFPA 90B for systems serving spaces in 1 or 2 family dwellings or serving spaces less than 25,000 cu. ft..
- D. Comply with NFPA 96, "Ventilation Control and Fire Protection of Commercial Cooking Operations," for kitchen hood ducts.
- E. Comply with UL 181 and UL 181A for ducts and closures.
- F. Testing, Adjusting, and Balancing Agency Qualifications: AABC certified (to be furnished by Tenant).

PART 2 - PRODUCTS

2.1 DUCTS

- A. Spiral Duct: Spiral Lock Seam, without insulation, G90 galvanized finish, ASTM A-653/924
  - 1. Basis of Design Manufacturers: Lindab SPIROsafe, alternates to the basis of design must be submitted for review.
  - 2. Fittings: Factory produced standing seam construction with internal sealing. Fittings with a major axis of 36" or smaller shall be 20 gauge. Fittings with a major axis of 37"-48" shall be 18 gauge.
- B. Galvanized Steel Sheet: Forming steel, ASTM A 653/653M, G90 coating designation.
- C. Duct Liner: ASTM C 1071, Type II, with an airstream surface coated with a temperature resistant coating. Thickness: 1-1/2 inch. R-value : 8.
  - 1. Adhesive: ASTM C 916, Type I.
  - 2. Mechanical Fasteners: Galvanized steel pin, length as required to penetrate liner plus a 1/8 inch projection maximum into the airstream.
- D. Joint and Seam Tape: Comply with UL 181A.
- E. Joint and Seam Sealant: Comply with UL 181A.
- F. Rectangular Metal Duct Fabrication: Comply with SMACNA's "HVAC Duct Construction Standard" for metal thickness, reinforcing types and intervals, tie rod applications, and joint types and intervals.

2.2 ACCESSORIES

- A. Volume-Control Dampers: Factory fabricated volume control dampers, complete with required hardware and accessories. Single blade and multiple opposed blade, standard leakage rating, and suitable for horizontal or vertical applications.
- B. Fire Dampers: Factory-fabricated fire dampers, complete with required hardware and accessories. UL labeled according to UL 555, "Fire Dampers".
- C. Flexible Connectors: Flame retardant or noncombustible fabrics, coatings, and adhesives complying with UL 181, Class 1.
- D. Flexible Ducts: Factory fabricated, insulated, round duct, with an outer jacket enclosing 2 inch thick, glass fiber insulation, R-value: 6.0, around a continuous inner liner.

PART 3 - EXECUTION

3.1 INSTALLATION

- A. Duct System Pressure Class: Construct and install each duct system with 2 inch positive and negative duct pressure classifications.
- B. Conceal ducts from view in finished and occupied spaces. Except where noted as exposed.
- C. Avoid passing through electrical equipment spaces and enclosures.
- D. Support and connect metal ducts according to SMACNA's "HVAC Duct Construction Standard".
- E. Install duct accessories according to applicable portions of details of construction as shown in SMACNA standards.
- F. Install liner and/or insulation on ductwork per the material schedule on sheet M010.
- G. Install volume control dampers in lined duct with methods to avoid damage to liner and to avoid erosion of duct liner.
- H. Install fire and smoke dampers according to manufacturer's UL approved written instructions.
- I. Install fusible links in fire dampers.
- J. Provide saddle taps at tees for exposed ductwork.

3.2 TESTING, ADJUSTING, AND BALANCING

- A. The Tenant will supply an independent balance agent to to balance and adjust the HVAC installation. The balance agent will be responsible for any pulley or belt changes required.
- B. The GC is to have trained staffed available during the balancing to correct issues noted by the balance agent.
- C. The balance agent is to balance airflow within distribution systems, including submains, branches, and terminals to indicated quantities +/- 10%. The hood exhaust system shall be balanced to a tolerance of -0+10% and the make-up air system to a tolerance of -10+0%.
- D. The balance agent is to supply a copy of the balance report to the Tenant, engineer and general contractor for review.

END OF SECTION 15810

SECTION 15855 - DIFFUSERS, REGISTERS, AND GRILLES

PART 1 - GENERAL

1.1 SECTION REQUIREMENTS

- A. Submittals: None.

PART 2 - PRODUCTS

2.1 OUTLETS AND INLETS

- A. All air terminal devices:
  - 1. Refer to Grills, Registers, and Diffusers Schedule for equipment schedule
  - 2. Manufacturer: As scheduled (NO SUBSTITUTIONS)
  - 3. Material: As scheduled.
  - 4. Finish: As scheduled.
  - 5. Mounting: As scheduled.

PART 3 - EXECUTION

3.1 INSTALLATION

- A. Coordinate location and installation with duct installation and installation of other ceiling and wall mounted items.
- B. Locate ceiling diffusers, registers, and grilles, as indicated on the architectural "reflected ceiling plans." Unless otherwise indicated, locate units in center of acoustical ceiling panels.

END OF SECTION 15855

**HVAC GENERAL NOTES**

- A. GENERAL NOTES APPLY TO HVAC SHEETS.
- B. WORK SHALL COMPLY WITH STATE AND LOCAL CODE REQUIREMENTS AS APPROVED AND AMENDED BY THE AUTHORITY HAVING JURISDICTION, INCLUDING APPLICABLE SECTIONS OF NFPA, THE MECHANICAL CODE, AND ANY INTERIM AMENDMENTS AT THE TIME OF THE PROPOSAL. PURCHASE PERMITS ASSOCIATED WITH THE WORK. OBTAIN INSPECTIONS REQUIRED BY CODE. SEE ARCHITECTURAL SHEETS FOR THE PREVAILING CODES.
- C. CONTRACTOR AND SUBCONTRACTORS SHALL REVIEW A COMPLETE SET OF THE CONSTRUCTION DOCUMENTS.
- D. COORDINATE WORK WITH THE WORK OF OTHER TRADES, EQUIPMENT FURNISHED BY OTHERS, REQUIREMENTS OF THE OWNER, AND OF THE EXISTING CONDITIONS AT THE PROJECT SITE.
- E. DRAWINGS FOR THE MECHANICAL WORK ARE DIAGRAMMATIC, SHOWING THE GENERAL LOCATION, TYPE, LAYOUT, AND EQUIPMENT REQUIRED. THE DRAWING SHALL NOT BE SCALED FOR EXACT MEASUREMENTS, REFER TO ARCHITECTURAL DRAWINGS FOR DIMENSIONS. REFER TO MANUFACTURER'S STANDARD INSTALLATION DRAWINGS FOR EQUIPMENT CONNECTIONS AND INSTALLATION REQUIREMENTS. PROVIDE DUCTWORK, CONNECTIONS, OFFSETS, ACCESSORIES, AND MATERIALS NECESSARY FOR A COMPLETE SYSTEM.
- F. DUCT DIMENSIONS ON PLANS INDICATE DIMENSIONS OF INTERNAL FREE AREA.
- G. PERFORATED CEILING DIFFUSERS SHALL BE 4-WAY UNLESS NOTED OTHERWISE.
- H. COORDINATE ROOF WORK WITH THE OWNER'S CONSTRUCTION MANAGER PRIOR TO CONSTRUCTION.
- I. UNLESS NOTED OTHERWISE RECTANGULAR DUCT ELBOWS GREATER THAN 45° SHALL BE MITERED ELBOWS WITH DOUBLE-THICKNESS TURNING VANES AND RECTANGULAR DUCT ELBOWS 45° OR LESS SHALL BE RADIUSSED ELBOWS WITH AN INSIDE RADIUS OF AT LEAST 1/2 THE WIDTH OF THE DUCT.
- J. REPLACE AIR FILTERS WITH NEW, CLEAN MERV 8 AIR FILTERS AT TURNOVER.
- K. THE TERM "FURNISH" MEANS SUPPLY AND DELIVER TO THE PROJECT SITE, READY FOR UNLOADING, UNPACKING, ASSEMBLY, INSTALLATION, AND SIMILAR OPERATIONS. THE TERM "INSTALL" DESCRIBES THE OPERATIONS AT THE PROJECT SITE INCLUDING THE ACTUAL UNLOADING, UNPACKING, ASSEMBLY, ERECTING, PLACING, ANCHORING, APPLYING, WORKING TO DIMENSION, FINISHING, CURING, PROTECTING, CLEANING, AND SIMILAR OPERATIONS. THE TERM "PROVIDE" MEANS TO FURNISH AND INSTALL, COMPLETE AND READY FOR THE INTENDED USE.
- L. INSTALL LABELING CALLED FOR IN THE HVAC DRAWINGS USING ENGRAVED PHENOLIC PLATES (WHITE WITH BLACK LETTERING) FURNISHED BY TSV.
- M. PROVIDE P3000 12 GA. UNISTRUT WITH PG FINISH FOR DUCT SUPPORTS AND OTHER UNISTRUT IN AREAS EXPOSED TO VIEW. SLOTTED UNISTRUT AND OTHER UNISTRUT WITH HOLES IS NOT ACCEPTABLE.

**HVAC MATERIAL SCHEDULE**

	APPLICATION	ALLOWABLE MATERIAL
DUCT		
	CONCEALED, GENERAL EXHAUST	RECT. OR ROUND AS SHOWN
	CONCEALED, RETURN	RECT. OR ROUND AS SHOWN, LINED OR INSULATED
	CONCEALED, SUPPLY	RECT. OR ROUND AS SHOWN, LINED OR INSULATED
	CONCEALED, TYPE I HOOD EXHAUST	RECTANGULAR 16 GA. BLACK IRON W/ WRAP OR UL 1978 FACTORY-MANUFACTURED DUCT W/ WRAP (SUBMIT SHOP DRAWINGS FOR FACTORY-MANUFACTURED DUCT PRIOR TO ORDERING FOR APPROVAL)
	EXPOSED GENERAL EXHAUST	RECTANGULAR, NO EXPOSED DUCT-SEALING MASTIC
	EXPOSED RETURN	RECTANGULAR, NO EXPOSED DUCT-SEALING MASTIC
	EXPOSED SUPPLY	RECT. LINED OR ROUND AS SHOWN, NO EXPOSED DUCT-SEALING MASTIC

**HVAC ABBREVIATIONS**

- (E) EXISTING
- ABV ABOVE
- ADA AMERICANS WITH DISABILITIES ACT
- AFF ABOVE FINISHED FLOOR
- AFG ABOVE FINISHED GRADE
- AHJ AUTHORITY HAVING JURISDICTION
- BFF BELOW FINISHED FLOOR
- BFG BELOW FINISHED GRADE
- BOH BACK OF HOUSE
- CLG CEILING
- CTE CONNECT TO EXISTING
- DN DOWN
- EXG EXISTING
- FLR FLOOR
- FOH FRONT OF HOUSE
- GYP GYPSUM BOARD
- NTS NOT TO SCALE
- O/H OVERHEAD
- OBD OPPOSED BLADE DAMPER
- TYP TYPICAL
- U/G UNDERGROUND
- UNO UNLESS NOTED OTHERWISE
- VFD VARIABLE FREQUENCY DRIVE
- VSC VARIABLE SPEED CONTROLLER
- W/ WITH
- WIC WALK-IN COOLER
  
- C02AS TENANT'S CO2 ALARM SUPPLIER
- GC GENERAL CONTRACTOR
- HES TENANT'S HVAC EQUIPMENT SUPPLIER
- HS TENANT'S HOOD SUPPLIER
- KES TENANT'S KITCHEN EQUIPMENT SUPPLIER
- LL LANDLORD
- SPS TENANT'S SODA POP SUPPLIER
- TAB TENANT'S TEST AND BALANCE VENDOR
- TCC TENANT'S CABLING CONTRACTOR
- TDC TENANT'S DUCT CLEANER
- TEMS TENANT'S ENERGY MANAGEMENT SYSTEM SUPPLIER
- TLS TENANT'S LIGHT/LAMP SUPPLIER
- TMB TENANT'S MENU BOARD SUPPLIER
- TMS TENANT'S MILLWORK SUPPLIER
- TPS TENANT'S PHONE SUPPLIER
- TPS TENANT'S PANELBOARD SUPPLIER
- TRS TENANT'S RAILING SUPPLIER
- TSV TENANT'S SIGN VENDOR
- TUV TENANT'S UV SNAITIZER SUPPLIER
- WCS TENANT'S WALK-IN COOLER SUPPLIER
- WHS TENANT'S WATER HEATER SUPPLIER

**HVAC SYMBOLS**

- CEILING DIFFUSER
- CEILING-MOUNTED RETURN OR EXHAUST REGISTER
- SUPPLY REGISTER
- RETURN GRILLE
- FLEXIBLE DUCT
- MITERED CORNER WITH TURNING VANES
- DUCTWORK INTERNAL FREE DIMENSIONS (WIDTH/HEIGHT)
- RECTANGULAR TO ROUND DUCT TRANSITION
- DUCT-MOUNTED SMOKE DETECTOR
- MOTOR-OPERATED DAMPER
- MANUAL VOLUME DAMPER
- GREASE DUCT CLEANOUT
- MITERED CORNER WITHOUT TURNING VANES
- GRIDPOINT THERMOSTAT
- GRIDPOINT ZONE SENSOR MODULE
- GRIDPOINT SUPPLY PROBE
- PLAN NOTE: SEE PLAN NOTES LISTED ON THE SAME SHEET FOR NOTE MEANING
- CONNECT TO EXISTING
- EQUIPMENT TAG: SEE EQUIPMENT SCHEDULE ON SHEET M600 FOR EQUIPMENT INFORMATION
- AUDIO/VISUAL REMOTE SMOKE DETECTOR ANNUNCIATOR WITH REMOTE KEY OPERATED RESET
- GRILL, REGISTER, OR DIFFUSER TAG: TAG NECK SIZE AIRFLOW [CFM]

Consultant:



1425 WAKARUSA DR. STE B  
LAWRENCE, KS 66049  
PH: 785.993.0300  
AEGROUP@BAE.GROUP

FOR CONSTRUCTION

COPYRIGHT 2024  
THIS DRAWING IS AN INSTRUMENT OF SERVICE AND AS SUCH REMAINS THE PROPERTY OF CHIPOTLE MEXICAN GRILL, INC.. PERMISSION FOR USE OF THIS DOCUMENT IS LIMITED AND CAN BE EXTENDED ONLY BY WRITTEN AGREEMENT WITH CHIPOTLE MEXICAN GRILL, INC..



STORE NO.: 5591  
Horn Lake  
4345 Goodman Road  
Horn Lake, MS 38637

Issue Record:	DATE	DESCRIPTION
10/17/2024	PERMIT ISSUE	

Revisions:	NO.	DESCRIPTION

Drawn:	Checked:
JD	AJD

Project No.  
241085

Contents:

**HVAC SPECIFICATIONS**

**M010**





**SANITIZING EQUIPMENT SCHEDULE**

TAG	COUNT	DESCRIPTION	FURNISHED BY	INSTALLED BY	MANUFACTURER	MODEL	REMARKS
SB-1	2	BATHROOM AIR PURIFICATION UNIT	TUV	GC	RGF ENVIRONMENTAL GROUP	BRU ASSEMBLY	SEE ELECTRICAL SHEETS FOR CONNECTION INFORMATION
SH-1	2	HVAC AIR PURIFICATION UNIT	TUV	GC	RGF ENVIRONMENTAL GROUP	REME-HALO	SEE DETAIL 6/M700 FOR INSTALLATION INFORMATION.
SI-1	1	ICE MACHINE TREATMENT SYSTEM	TUV	GC	RGF ENVIRONMENTAL GROUP	IMS-B-GA	SEE PLUMBING DRAWINGS FOR INSTALLATION INFORMATION.

**AIR BALANCE SCHEDULE**

TAG	SUPPLY FLOW	RETURN FLOW	EXHAUST FLOW	SUBTOTAL
EF-1	0 CFM	0 CFM	2,550 CFM	-2,550 CFM
EF-2	0 CFM	0 CFM	150 CFM	-150 CFM
MAU-1	1,300 CFM	0 CFM	0 CFM	1,300 CFM
RTU-1	4,000 CFM	3,250 CFM	0 CFM	750 CFM
RTU-2	4,000 CFM	3,250 CFM	0 CFM	750 CFM
NET PRESSURIZATION				100 CFM

**CONTROL FUNCTIONS**

- A. THE MAIN COOKING EXHAUST FAN AND MAKE-UP AIR UNIT SHALL BE INTERLOCKED TO OPERATE TOGETHER. THIS CONTROL CIRCUIT IS ACTIVATED BY A SWITCH AND INCLUDES A FIRE PROTECTION OVERRIDE.
- B. THE TEMPERATURE IN EACH ZONE IS CONTROLLED BY SPACE TEMPERATURE SENSORS CONNECTED TO THE THERMOSTATS LOCATED IN THE OFFICE. ALL ZONES SHALL OPERATE WITH CONTINUOUS FAN OPERATION DURING OCCUPIED TIMES AND INTERMITTENTLY AS NEEDED TO MAINTAIN SET POINTS DURING UNOCCUPIED TIMES. OUTSIDE AIR DAMPERS SHALL BE OPEN CONTINUOUSLY WHEN EITHER IN OCCUPIED MODE OR WHEN THE HOOD SYSTEM IS ON AND SHALL BE CLOSED DURING UNOCCUPIED PERIODS.
- C. THE THERMOSTATS SHALL DETERMINE OCCUPIED/UNOCCUPIED STATUS BASED ON THE SCHEDULE IN THE ENERGY MANAGEMENT SYSTEM.

**FAN SCHEDULE**

TAG	DESCRIPTION	AIRFLOW	E.S.P.	WEIGHT	ELECTRICAL		FURNISHED BY	INSTALLED BY	BASIS FOR DESIGN		REMARKS
					MOTOR POWER	V/P/H			MANUFACTURER	MODEL	
EF-1	UPBLAST UL76Z EXHAUST FAN	2,550 CFM	1.20 in-wg	200 lb	2 hp	208/1/60	HS	GC	ACCUREX	XCUE-160-VG	UPBLAST EXHAUST FAN FURNISHED WITH WEATHERPROOF DISCONNECT AND VENTED ROOF CURB
EF-2	DOWNBLAST RESTROOM EXHAUST FAN	150 CFM	0.60 in-wg	100 lb	0.25 hp	120/1/60	HS	GC	ACCUREX	XRED-097-VG	DIRECT DRIVE DOWNBLAST RESTROOM EXHAUST FAN FURNISHED WITH INTEGRAL DISCONNECT, SPEED CONTROL, BACKDRAFT DAMPER, AND CURB

**VIROGUARD SCHEDULE**

TAG	COUNT	DESCRIPTION	DUCT CONNECTION SIZE	FAN	FURNISHED BY	INSTALLED BY	BASIS FOR DESIGN MANUFACTURER
VG-1	1	VIROGUARD HOOD EXHAUST FAN ROOFTOP CONTAINMENT SYSTEM	18" X 18"	ACCUREX XCUE-160	TDC	GC	ENVIROMATIC

**CONDENSING UNIT SCHEDULE**

TAG	DESCRIPTION	NOMINAL CAPACITY	NUMBER OF		REFRIGERANT		WEIGHT	ELECTRICAL			FURNISHED BY	INSTALLED BY	BASIS FOR DESIGN		REMARKS
			COMPRESSORS	CIRCUITS	TYPE	CHARGE		MOC	FLA	V/P/H			MANUFACTURER	MODEL	
CU-1	CONDENSING UNIT - WALK-IN COOLER		1	1	R-404A	10.4 lb	250 lb	15 A	9 A	208/3/60	WCS	GC	HARFORD	KPCL99MZOP-3E	FURNISHED WITH WALK-IN COOLER
CU-2	REMOTE CONDENSER - LOW CAPACITY ICE MAKER		0	1	R-404A	11.46 lb	100 lb			120/1/60	KES	GC	HOSHIZAKI	URC-9FZ	FURNISHED WITH ICE MAKER
CU-3	REMOTE CONDENSER - SODA MACHINE ICE MAKER		0	1	R-404A	3.86 lb	100 lb			120/1/60	KES	GC	HOSHIZAKI	URC-5FZ	FURNISHED WITH ICE MAKER

**MAKEUP AIR UNIT SCHEDULE**

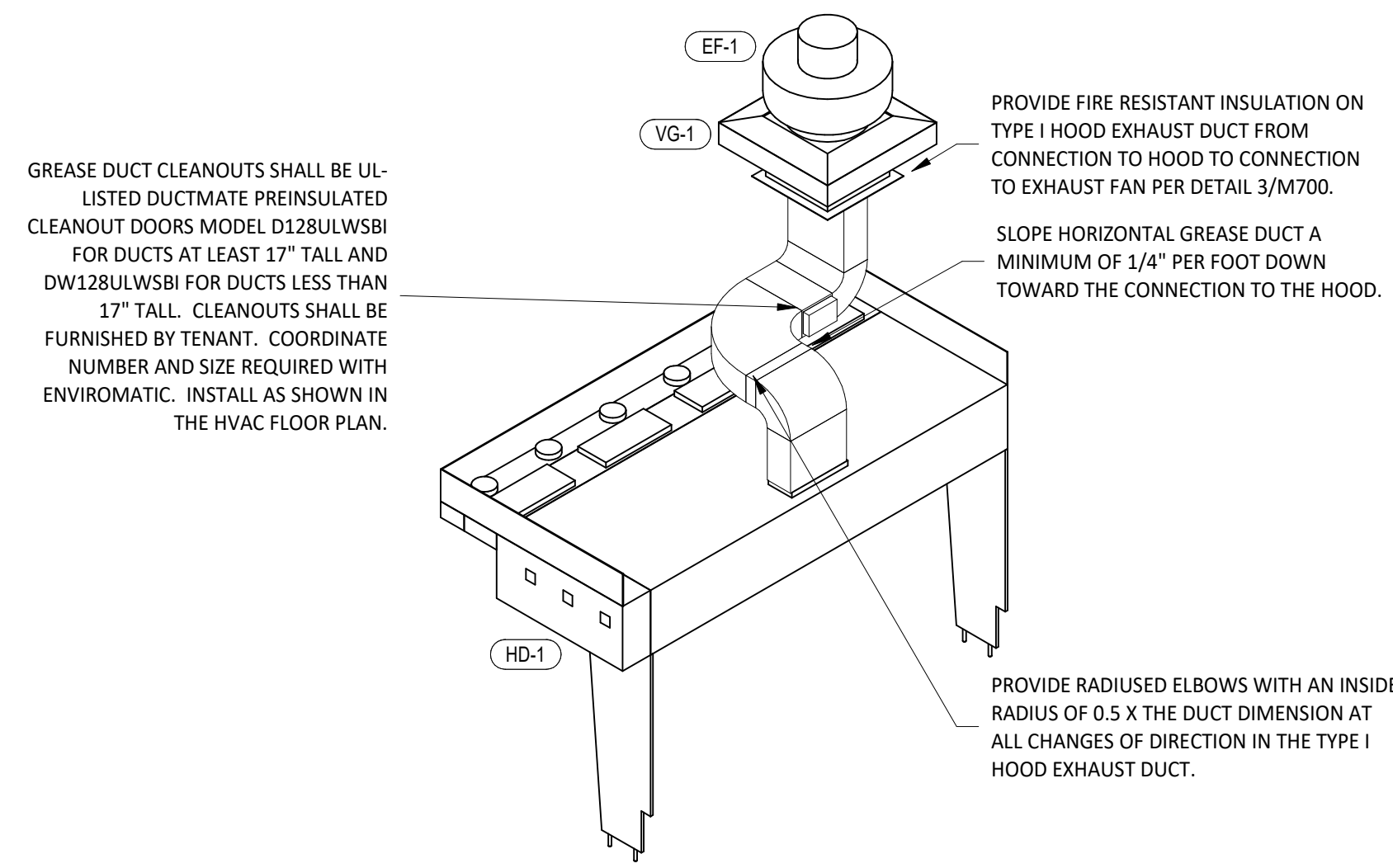
TAG	DESCRIPTION	AIRFLOW	E.S.P.	HEATING			WEIGHT	ELECTRICAL		FURNISHED BY	INSTALLED BY	BASIS FOR DESIGN		REMARKS
				INPUT	OUTPUT	EAT		MOTOR POWER	V/P/H			MANUFACTURER	MODEL	
MAU-1	DIRECT-FIRED MAKEUP AIR UNIT	1,300 CFM	0.50 in-wg	92,000 Btu/h	85,000 Btu/h	21 °F	500 lb	1 hp	120/1/60	HS	GC	ACCUREX	XDGX-P115-H05-VG	FURNISHED WITH DISCONNECT, ROOF CURB, SCREEN INTAKE, AND WASHABLE ALUMINUM FILTERS

**KITCHEN HOOD SCHEDULE**

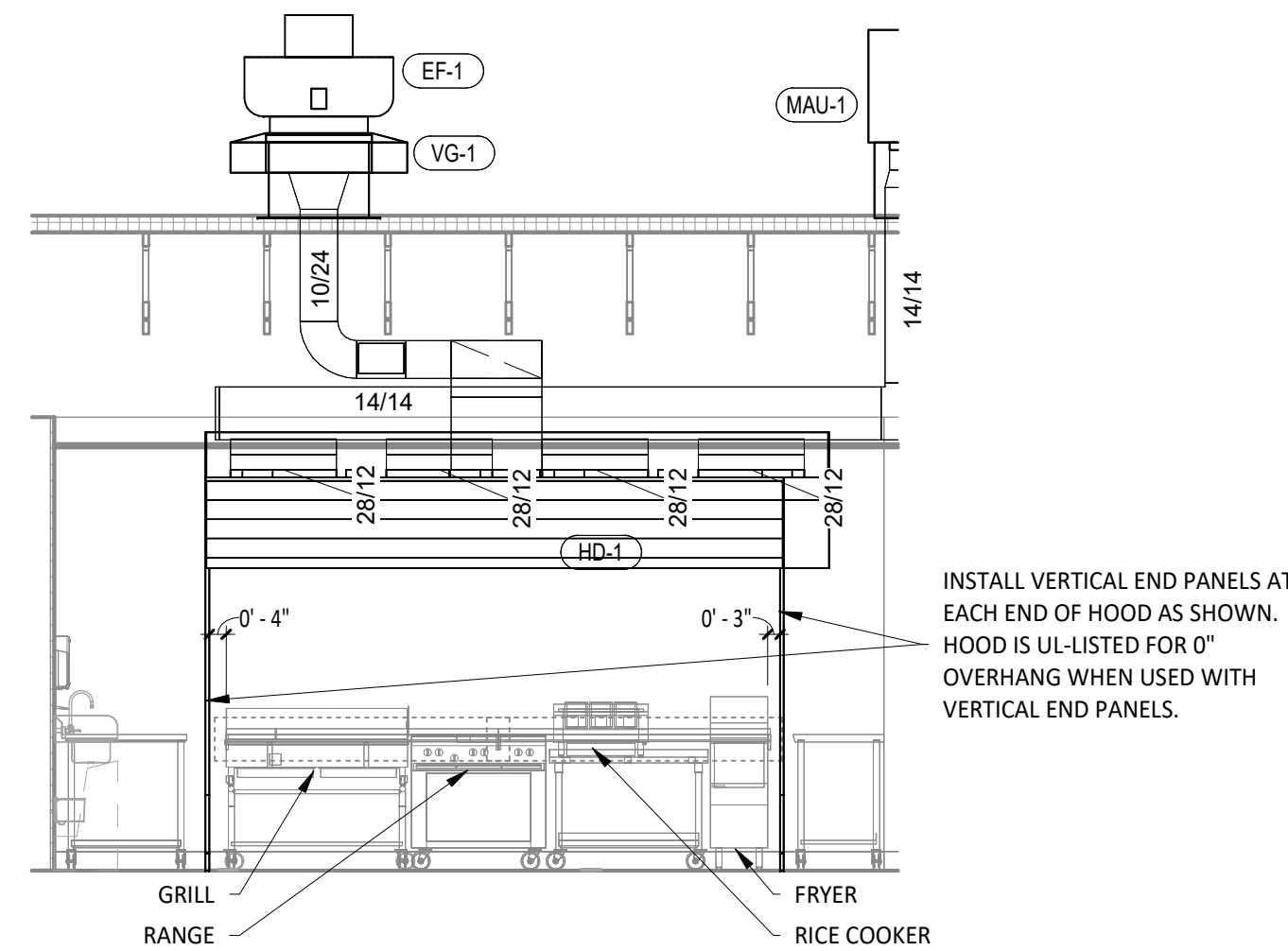
TAG	DESCRIPTION	MAX COOKING TEMP.	AIRFLOW	E.S.P.	EXHAUST PLENUM				PERFORATED SUPPLY PLENUMS						NO. OF LIGHT FIXTURES	WEIGHT	FURNISHED BY	INSTALLED BY	BASIS FOR DESIGN		REMARKS				
					DUCT COLLARS				MAU PLENUM			AC PLENUM							MANUFACTURER	MODEL					
					NO.	WIDTH	LENGTH	LENGTH	WIDTH	LENGTH	WIDTH	AIRFLOW	NO.	WIDTH								LENGTH	AIRFLOW	NO.	DIAMETER
HD-1	TYPE I CANOPY HOOD WITH PERFORATED MAU AND AC SUPPLY PLENUMS	600 °F	2,550 CFM	0.97 in-wg	1	10"	2' - 0"	12' - 9"	4' - 3"	13' - 9"	2' - 0"	1,300 CFM	4	1' - 0"	2' - 4"	800 CFM	6	8"	8	1,000 lb	HS	GC	ACCUREX	XXEW-153-S	MAT'L: 18 GA. TYPE 430 SS. FURNISHED WITH VERTICAL END PANELS, VAPORPROOF INCANDESCENT LIGHT FIXTURES, 16" TALL HE SS FILTERS, INTEGRAL UTILITY CABINET, KITCHEN EXHAUST SUPPRESSION SYSTEM, DUCT COLLAR TEMPERATURE SENSOR, PREWIRE PACKAGE, SPARE FIRE SYSTEM DRY CONTACT, AND 4-POLE 20A CONTACTOR

**ROOFTOP UNIT SCHEDULE**

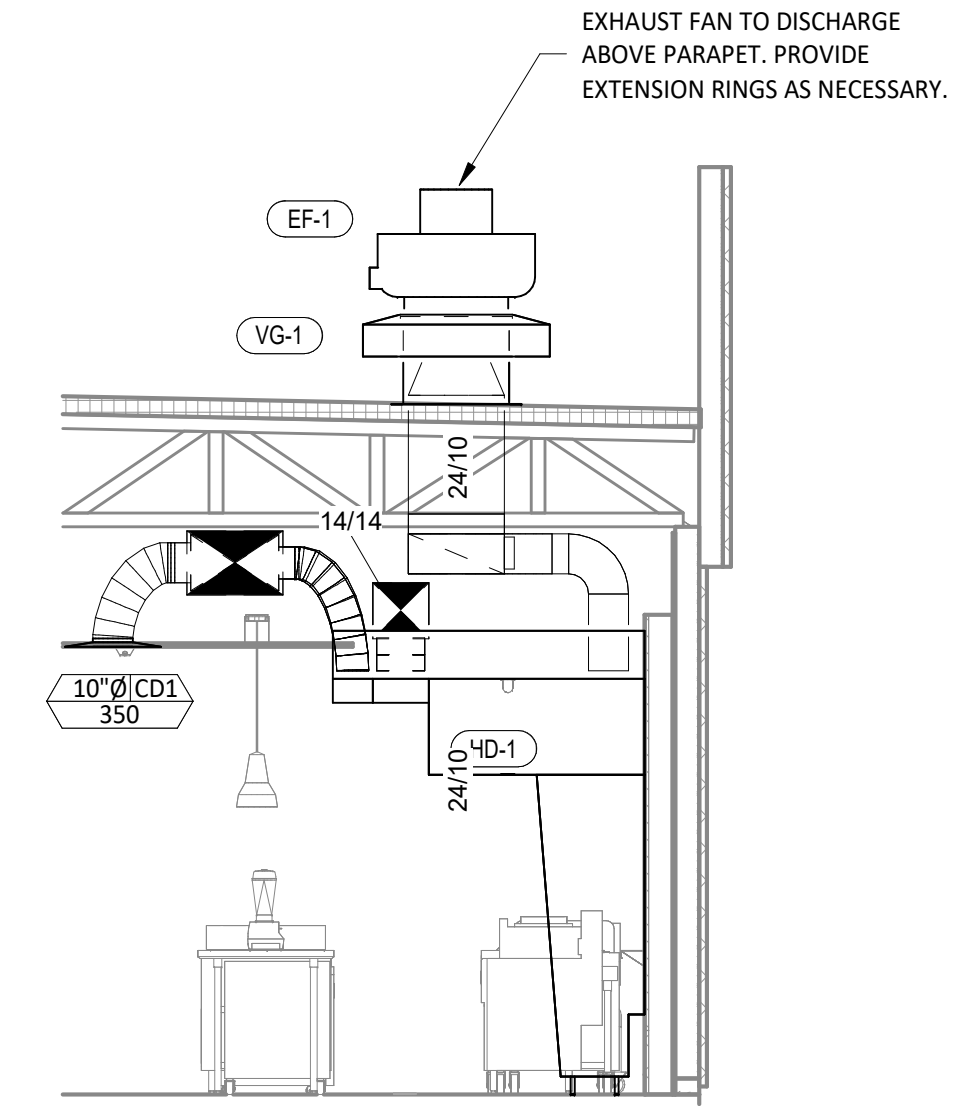
TAG	DESCRIPTION	NOMINAL CAPACITY	AIRFLOW		NET COOLING CAPACITY				HEATING CAPACITY			ELECTRICAL			BASIS FOR DESIGN		REMARKS			
			TOTAL	OA	E.S.P. (IN. W.C.)	TOTAL (MBH)	SENSIBLE (MBH)	EAT	COND. EAT	INPUT (BTU/h)	OUTPUT (BTU/h)	EAT	WEIGHT	MOC	MCA	V/P/H		MANUFACTURER	MODEL	
RTU-1	KITCHEN ROOFTOP UNIT	10 ton	4,000 CFM	750 CFM	0.8	117.3	87.7	80 °F	67 °F	95 °F	250,000	205,000	70 °F	1,200 lb	60 A	54 A	208/3/60	CARRIER	48FCFN12	FURNISHED WITH HINGED ACCESS PANELS, STANDARD ECONOMIZER W/ DUAL ENTHALPY CONTROLS, BAROMETRIC RELIEF, RET. SMOKE DETECTOR W/ REMOTE KEYED ANNUNCIATOR/RESET, MERV-8 FILTERS, CURB, HAIL GUARD, DISCONNECT, & UNIT-MOUNTED NON-POWERED CONVENIENCE RECEPTACLE
RTU-2	DINING ROOM ROOFTOP UNIT	12.5 ton	4,000 CFM	750 CFM	0.8	135.1	84.7	79 °F	67 °F	93 °F	250,000	205,000	70 °F	1,300 lb	80 A	71 A	208/3/60	CARRIER	48FCFN14	FURNISHED WITH HINGED ACCESS PANELS, STANDARD ECONOMIZER W/ DUAL ENTHALPY CONTROLS, BAROMETRIC RELIEF, RET. SMOKE DETECTOR W/ REMOTE KEYED ANNUNCIATOR/RESET, MERV-8 FILTERS, CURB, HAIL GUARD, DISCONNECT, & UNIT-MOUNTED NON-POWERED CONVENIENCE RECEPTACLE



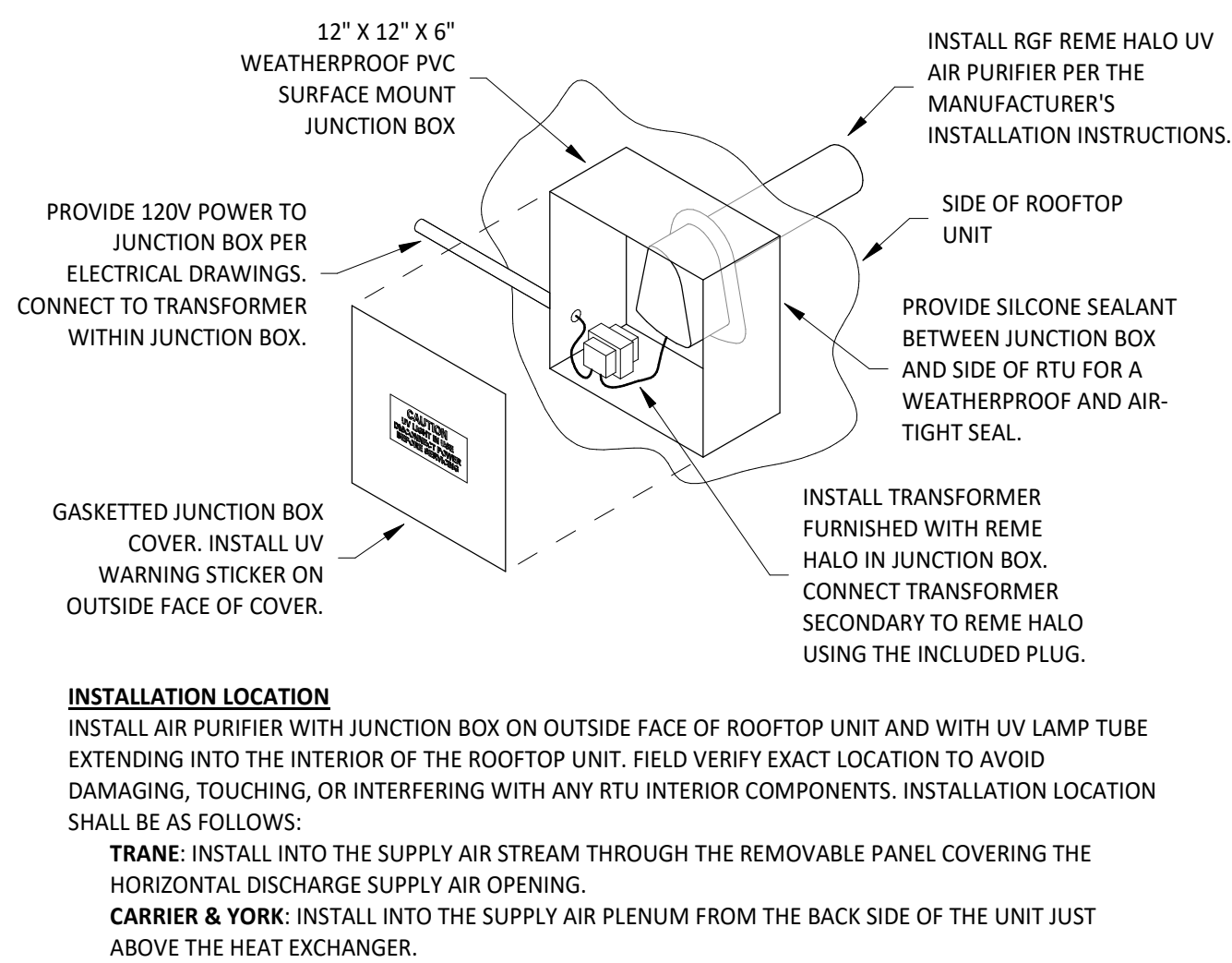
**9 HOOD EXHAUST ISOMETRIC**  
M700 NOT TO SCALE



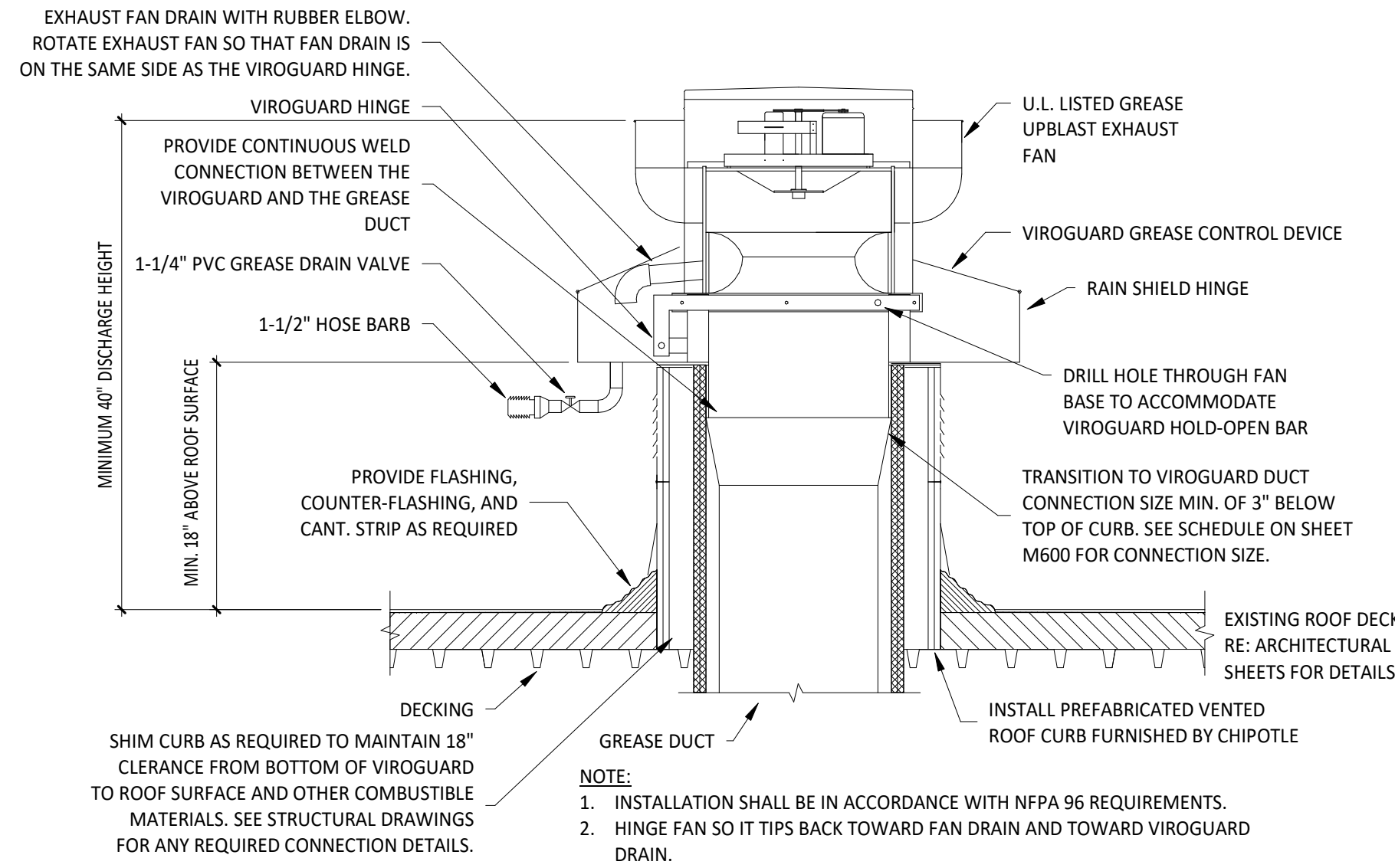
**8 HOOD ELEVATION**  
M700 1/4" = 1'-0"



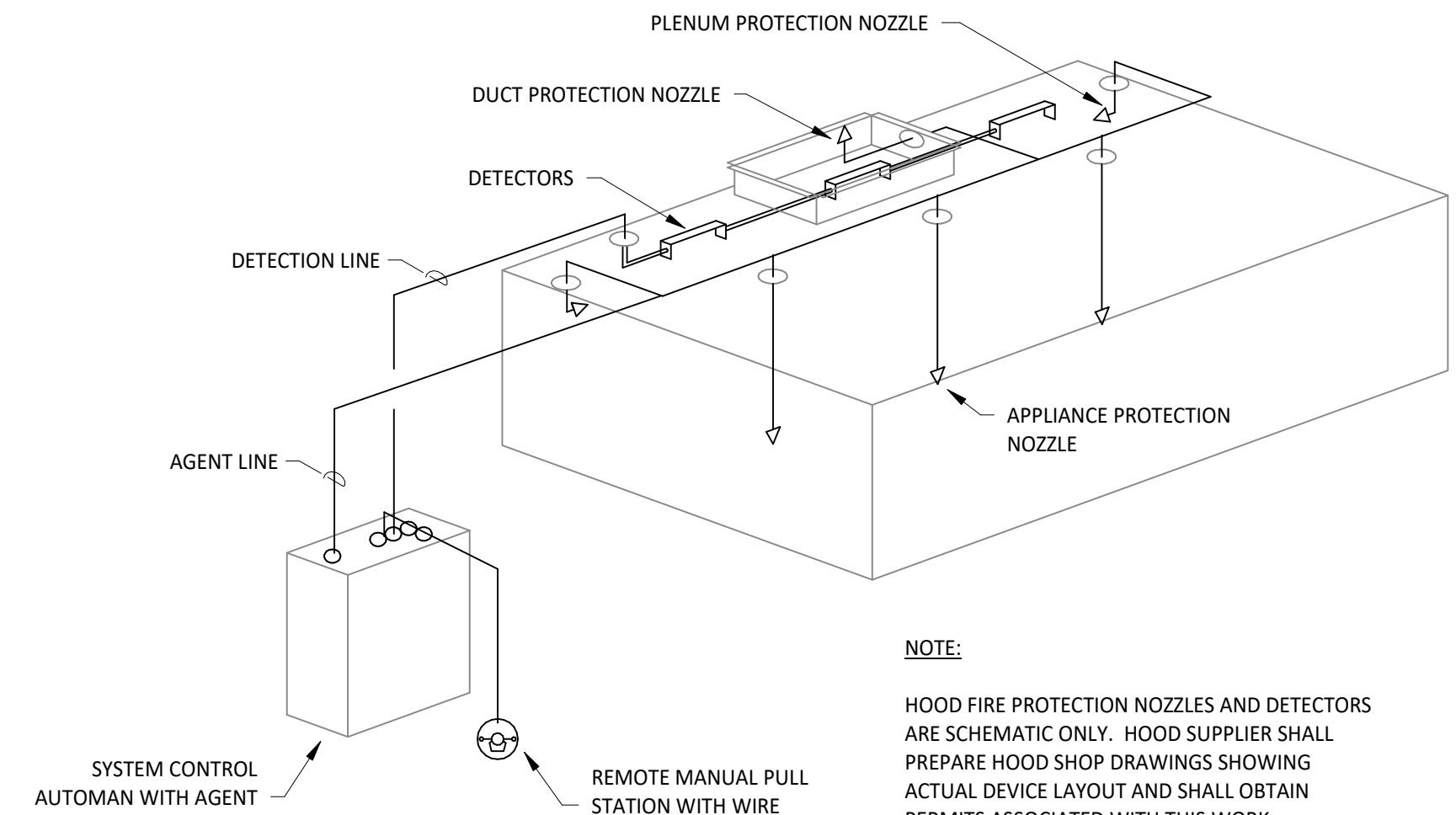
**7 DUCT SECTION AT HOOD**  
M700 1/4" = 1'-0"



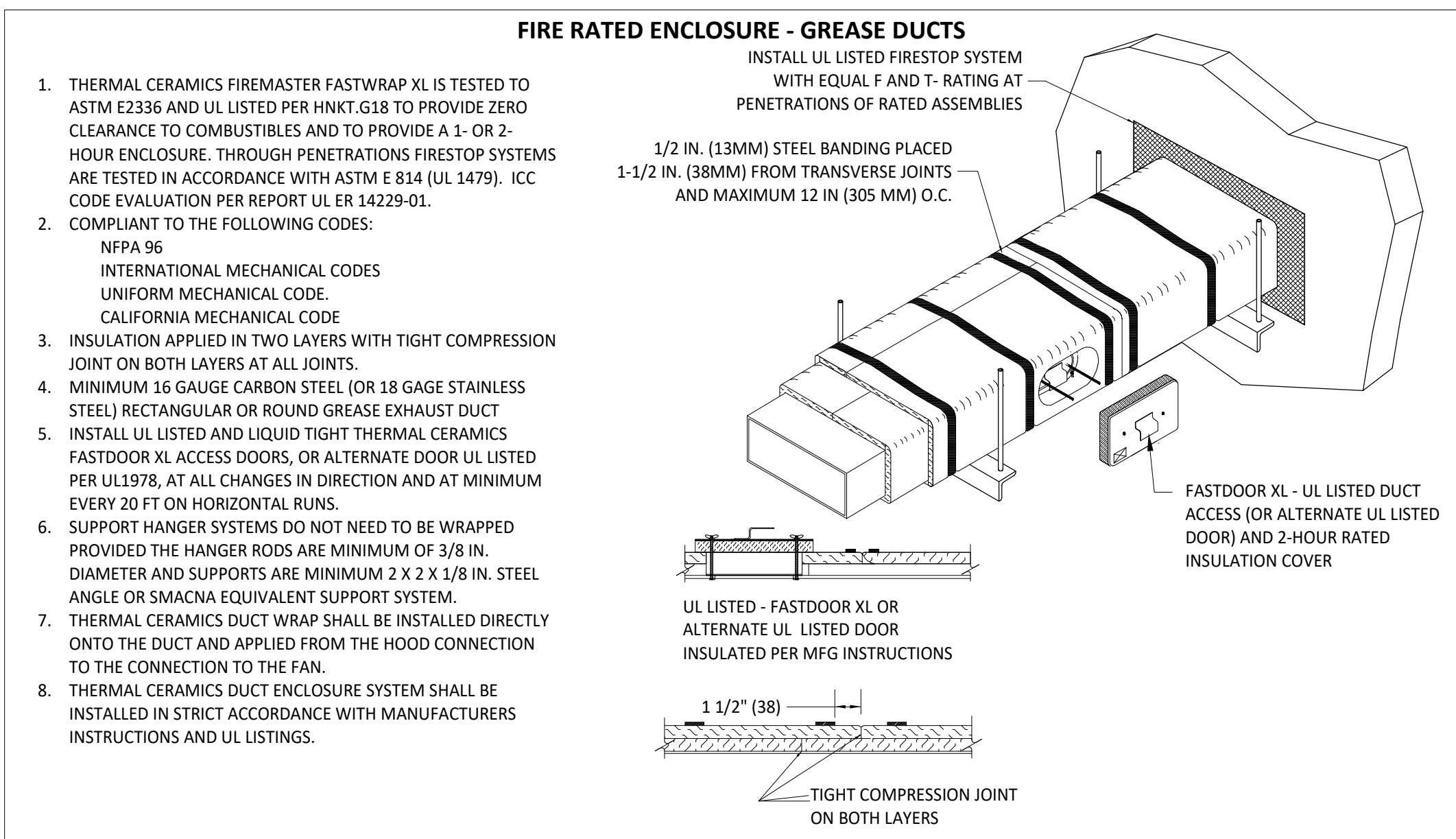
**6 UV AIR PURIFIER INSTALLATION**  
M700 NOT TO SCALE



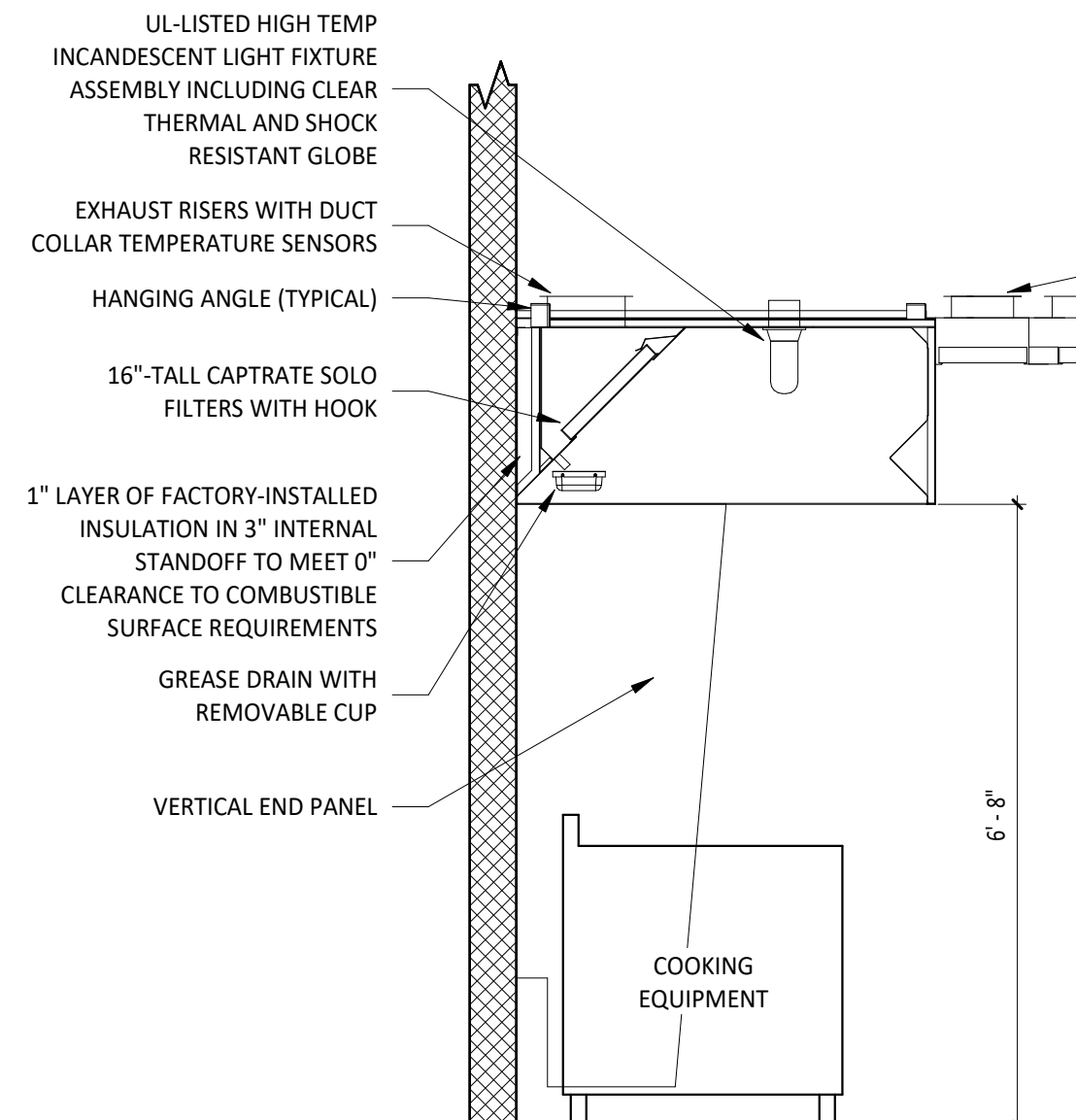
**5 GREASE EXHAUST FAN**  
M700 NOT TO SCALE



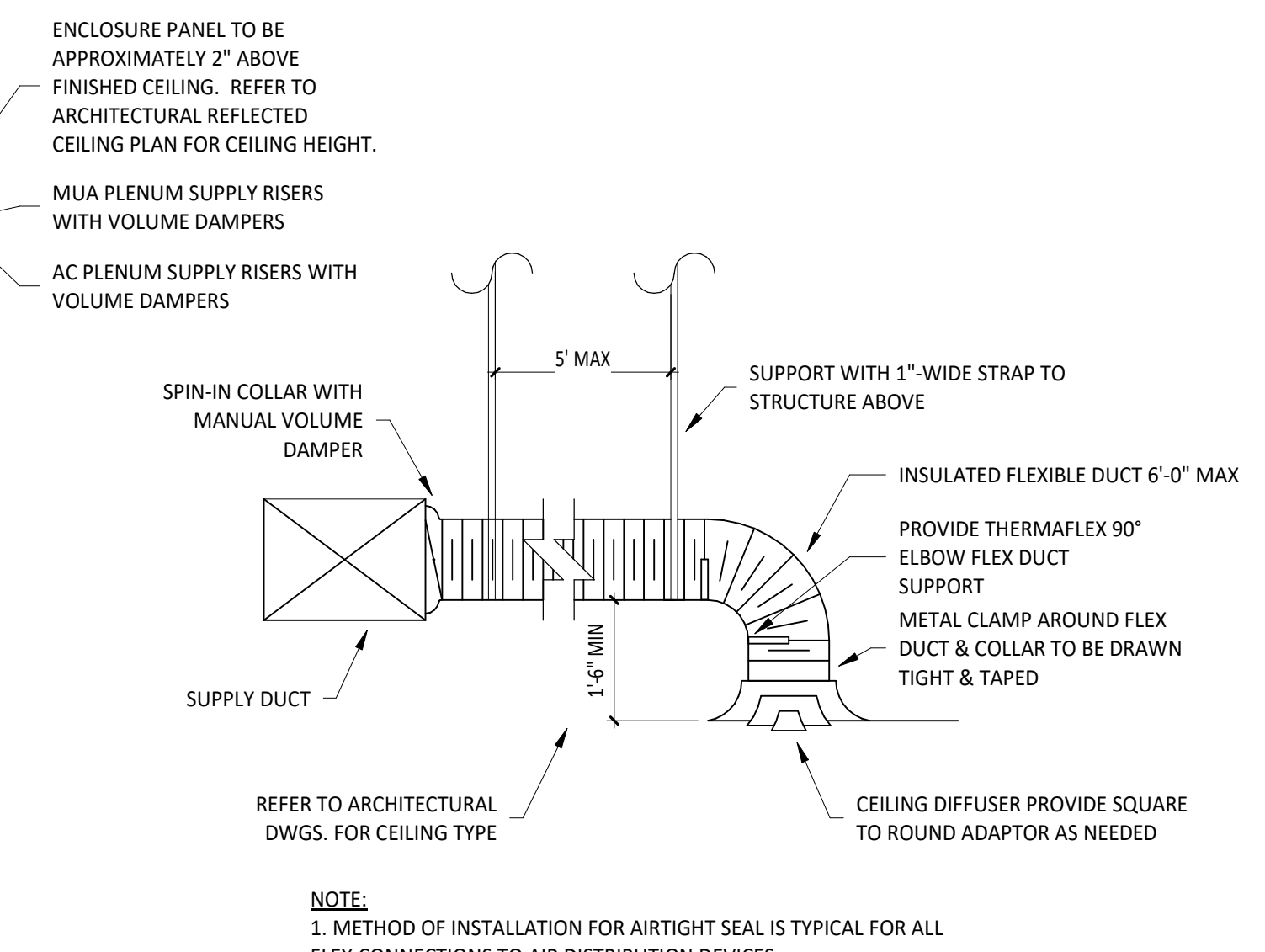
**4 FIRE SUPPRESSION SYSTEM SCHEMATIC**  
M700 NOT TO SCALE



**3 FIREMASTER DUCT WRAP - UL HNKT-G18**  
M700 NOT TO SCALE



**2 HOOD SECTION VIEW**  
M700 NOT TO SCALE



**1 DIFFUSER CONNECTION**  
M700 NOT TO SCALE

Consultant:



Blanchard AE Group

1425 WAKARUSA DR. STE B  
LAWRENCE, KS 66049  
PH: 785.993.0300  
AEGROUP@BAE.GROUP

FOR CONSTRUCTION

COPYRIGHT 2024  
THIS DRAWING IS AN INSTRUMENT OF SERVICE AND AS SUCH REMAINS THE PROPERTY OF CHIPOTLE MEXICAN GRILL, INC. PERMISSION FOR USE OF THIS DOCUMENT IS LIMITED AND CAN BE EXTENDED ONLY BY WRITTEN AGREEMENT WITH CHIPOTLE MEXICAN GRILL, INC.



CHIPOTLE MEXICAN GRILL, INC.  
PO BOX 182566  
COLUMBUS, OH 43218-2566  
TELEPHONE: (614) 318-2400  
INTERNET: WWW.CHIPOTLE.COM

STORE NO.: 5591  
Horn Lake  
4345 Goodman Road  
Horn Lake, MS 38637

Issue Record:  
10/17/2024 PERMIT ISSUE

Revisions:

Drawn: Checked:  
JJD AJD

Project No:  
241085

Contents:

HVAC DETAILS

M700

CONTROL INFORMATION

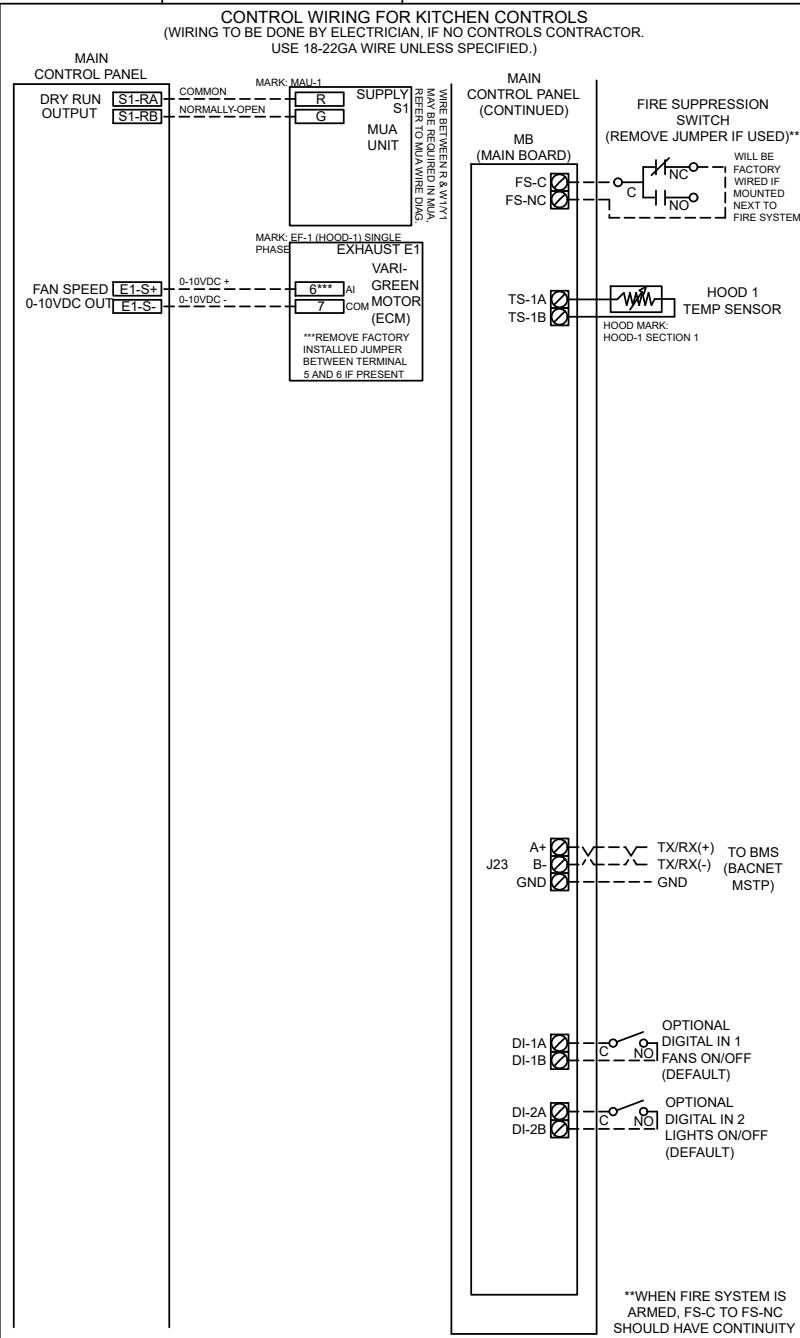
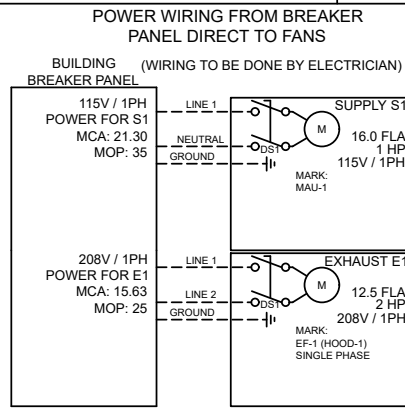
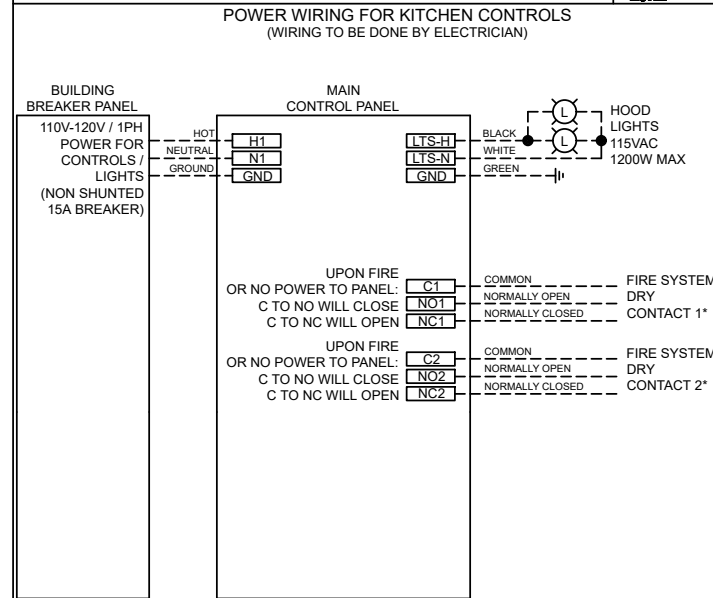
MARK	ELECTRICAL CONTROL PACKAGE		USER INTERFACE		FANS CONTROLLED											
	MODEL	LOCATION	TYPE	LOCATION	FAN #	TYPE	FAN	FAN MARK	ZONE	CFM	MOTOR HP	MOTOR VOLT	CYCLE	MOTOR PHASE	MOTOR STARTER IN PANEL	VFD IN PANEL
HOOD CONTROLS	XKC-CV-SB-11-1-0	RIGHT CABINET ON HOOD-1	FULL COLOR TOUCHSCREEN	CABINET - RIGHT CABINET ON HOOD-1	1	SUPPLY	S1	MAU-1	1	1300	1	115	60	1	NO	NO
					2	EXHAUST	E1	EF-1 (HOOD-1) SINGLE PHASE	1	2550	2	208	60	1	NO	NO

**CONTROL FEATURES**  
 HOOD LIGHT CONTROL  
 TEMP SENSORS (FACTORY INSTALLED) - QTY. 1  
 DRY FIRE CONTACTS - QTY. 2  
 LIGHTS OFF DURING FIRE  
 EXHAUST MAX DURING FIRE  
 SUPPLY OFF DURING FIRE  
 BMS INTEGRATION - BACNET MSTP

**SPECIAL DESIGN REQUESTS**  
 SDR #K2300291-1 - APPLIANCE CONTACTORS - 20A

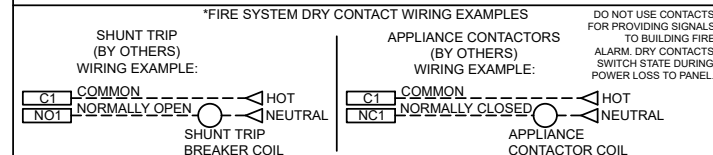


DOC NUMBER: ---	REV: ---	THESE DRAWINGS SHALL NOT BE REMOVED FROM THIS EQUIPMENT. USE COPPER CONDUCTORS RATED TO 90°C UNLESS SPECIFIED. TORQUE CONTROL & GROUND BLOCKS TO 8 LBS. IN. TORQUE POWER LUGS/SCREWS TO COMPONENT RATINGS LISTED. TORQUE CONTROL BOARD SCREW TERMINALS TO 3.5 LBS. IN. FIELD CONTROL WIRING RESISTANCE SHOULD NOT EXCEED 0.75 OHM. SEE IOM FOR ADDITIONAL INFORMATION, OR CALL FACTORY AT 1-800-371-8858.	NE PAS RETIRER CES DESSINS DE CET EQUIPEMENT SAUF INDICATION CONTRAIRE. UTILISER DES CONDUCTEURS EN CUIVRE CLASSÉS 90 °C. SERRER LES BORNES EN COMMANDE ET DE MISE À LA TERRE À 8 LB-PO. SERRER LES COSSÉS/VIS D'ALIMENTATION AUX COUPLES INDICQUÉS POUR LE COMPOSANT. SERRER LES BORNES À VIS DE LA CARTE DE COMMANDE À 3.5 LB-PO. LA RÉSISTANCE DU CÂBLAGE DE COMMANDE LOCAL NE DOIT PAS DÉPASSER 0.75 OHM. POUR PLUS D'INFORMATION, CONSULTER LE MANUEL OU APPELER 1-800-371-8858.
<b>CAUTION</b> UNIT MUST BE GROUNDED IN ACCORDANCE WITH N.E.C. POWER MUST BE OFF WHILE SERVICING.	<b>ATTENTION</b> L'APPAREIL DOIT ÊTRE MIS À LA TERRE CONFORMÉMENT AU CODE C.E. L'ALIMENTATION DOIT ÊTRE COUPÉE DURANT L'ENTRETIEN.	COMMERCIAL APPLIANCE OUTLET CENTER ELECTRICAL RATINGS: 110-240V, 1PHASE, 50-60HZ, 15A BASE FILE #E200616, ML FILE #E313951	PRG VERSION: V4 FIELD WIRING (CÂBLÉ LOCALÉMENT) FACTORY WIRING (CÂBLÉ À L'USINE)
WIRING DIAGRAM CODE: WDC#		JOB NAME: CHIPOTLE-HORN LAKE, MS	
MODEL: XKC-CV-SB-11-1-0		SERIAL NUMBER: WDSN#	
MARK: HOOD CONTROLS		MARK: HOOD CONTROLS	



CABINET DETAILS	USER INTERFACE DETAILS
<p>DRAWING NOT TO SCALE</p>	<p><b>MOUNTING TYPE</b> FACTORY MOUNTED: UTILITY CABINET - RIGHT END OF HOOD</p> <p><b>USER INTERFACE CONTROL</b> FANS AND LIGHTS</p> <p><b>INTERFACE CABLE LENGTH</b> 7FT (FACTORY PROVIDED)</p>
<p><b>MOUNTING LOCATION:</b> UTILITY CABINET ON HOOD (INNER CONTROL BOX: 12 X 20 X 6)</p>	<p><b>NOTES:</b> 1) WHEN CONTROLS ARE MOUNTED IN HOOD-MOUNTED OR WALL-MOUNTED UTILITY CABINET, FOR HOOD OR WALL CABINET DIMENSIONS SEE HOOD SUBMITTAL. 2) MINIMUM OF 36" OF CLEARANCE RECOMMENDED IN FRONT OF CONTROL CABINET</p>

ZONE CONFIGURATION							WIRING DIAGRAM CODE: WDC#					
ZONE #	ZONE	ROOM TEMP					JOB NAME: CHIPOTLE-HORN LAKE, MS					
1	Z1	PRESET					5591					
MODEL: XKC-CV-SB-11-1-0												
SERIAL NUMBER: WDSN#												
MARK: HOOD CONTROLS												
DOC NUMBER: --- REV: ---												
HOOD CONFIGURATION							DEFAULT SETTINGS / PARAMÈTRES PAR DÉFAUT					
HOOD #	HOOD	HOOD MARK	ZONE	EXHAUST	SUPPLY	MB-TEMP SENSORS	HCB					
1	H1	HOOD-1 SECTION 1	Z1	E1	S1	TS1	NO					
TYPE: CV CONFIGURATION: STANDARD							FACTORY SETTINGS					
ZONES: 1							HOODS: 1					
SUMPS: 0							EXHAUST FANS: 1					
SUPPLY FANS: 1							MB ROOM SENSOR: NO					
MB TEMP SENSORS: 1							HIGH TEMP FAULT: NO					
FREEZE PROTECTION: YES							GAS RESET: NO					
FAN PROVING: NO							BMS: BACNET MSTP					
BMS: BACNET MSTP							ZONE SETTINGS					
SEE ZONE CONFIGURATION IN TABLE ON LEFT							HOOD SETTINGS					
SEE HOOD CONFIGURATION IN TABLE ON LEFT							EXHAUST FAN SETTINGS					
SEE FAN CONFIGURATION IN TABLE ON LEFT							SUPPLY FAN SETTINGS					
SEE FAN CONFIGURATION IN TABLE ON LEFT							SENSOR SETTINGS					
SEE HOOD CONFIGURATION IN TABLE ON LEFT							USER INTERFACE SETTINGS (MB)					
FAN & LIGHT BUTTONS: SHOW BOTH (SEPERATE)							USER INTERFACE SETTINGS (HCB)					
NA							GENERAL SETTINGS					
TIME ZONE: CENTRAL DAYLIGHT (DEFAULT)							FIRE/FAULT SETTINGS					
EXHAUST DURING FIRE: MAX							SUPPLY DURING FIRE: OFF					
LIGHTS DURING FIRE: OFF							BMS SETTINGS					
BAUD RATE: 9600							MAC ADDRESS: 0					
MAX MASTER: 127							MAX INFO FRAMES: 20					
PRG VERSION: V4							FAN CONFIGURATION					
FAN #	TYPE	FAN	FAN MARK	ZONE	MIN CFM	MAX CFM	MODBUS VFD	VFD ADDRESS	MIN FREQ	MAX FREQ	MIN VDC	MAX VDC
1	SUPPLY	S1	MAU-1	Z1	-	1300	NO	-	-	-	-	10.0
2	EXHAUST	E1	EF-1 (HOOD-1) SINGLE PHASE	Z1	-	2550	NO	-	-	-	-	7.7



SERVICE INFORMATION

MARK: CERTIFICATION	MODEL: CERTIFICATION
ITEM: SERVICE	QUANTITY: 1

ACCUREX AFTERMARKET CERTIFICATION PROGRAM CONFIRMS THE EQUIPMENT IS INSTALLED AND OPERATING ACCORDING TO THE MANUFACTURER'S REQUIREMENTS BY A FACTORY AUTHORIZED SERVICER (FAS). INSTALLATION AND START-UP OF EQUIPMENT PER THE MANUFACTURER'S INSTALLATION AND OPERATIONS MANUAL TO BE PERFORMED BY OTHERS PRIOR TO THIS SERVICE. A WRITTEN REPORT WILL BE PROVIDED AFTER THIS SERVICE IS COMPLETED.

TRIP QUANTITY: 1

ONE TRIP TO THE JOBSITE INCLUDED FOR THE CERTIFICATION WORK TO BE PERFORMED (TIME ONSITE TBD BASED ON EQUIPMENT SELECTED)

EQUIPMENT INCLUDED IN CERTIFICATION:

- HOOD CONTROLS
- MAU-1
- EF-2 (RESTROOM)
- HOOD-1
- EF-1 (HOOD-1)

 <b>ACCUREX</b>	DIRECT CHAIN ACX JOE AYUB JOE.AYUB@ACCUREX.COM (857)272-8727
	PROJECT: 11/21/2024
MARK: CERTIFICATION	CHIPOTLE-HORN LAKE, MS 5591
	

FIRE SYSTEM INFORMATION

MARK	MODEL	LOCATION	FLOW POINTS		SUPPLY LINE	DETECTION	MARK(S) PROTECTED BY FIRE SYSTEM
			HOODS	PCU			
FSS	ANSUL R-102 WET CHEMICAL	CABINET – RIGHT END OF HOOD-1	13 UTILIZED 22 AVAILABLE		CONTINUOUS	FUSIBLE LINK	HOOD-1 SECTION 1

FIRE SYSTEM OPTIONS AND ACCESSORIES

FULL INSTALLATION (INCLUDES PRE-PIPED HOOD(S) WITH DETECTION AND FACTORY COORDINATED INSTALL)  
 CHROME SLEEVES FOR FACTORY PROVIDED APPLIANCES DROPS - INCLUDED  
 METAL BLOW-OFF CAPS - INCLUDED  
 GAS VALVE - INCLUDED - ELECTRICAL SHUTOFF VALVE, 1.5", 110V, 60HZ - PART# 455396  
 HOOD SUPPRESSION TANK - INCLUDED - 6 GAL. - [(2) 3.0 TANK(S)]  
 REMOTE PULL STATION - STANDARD - FIELD INSTALLATION AT SINGLE POINT OF EGRESS

ANSUL R102 (WET CHEMICAL) FIRE PROTECTION SYSTEM - MODEL FSSC

**CONTROL PANEL**

**NOTES:**

WET CHEMICAL FIRE PROTECTION SYSTEM TO BE ANSUL R-102, DESIGNED IN COMPLIANCE WITH UL 300 REQUIREMENTS.

- VERIFICATION OF ALL COOKING EQUIPMENT MAKE, MODEL AND LOCATION REQUIRED FOR ALL FIRE PROTECTION SYSTEMS.
- ALL FIRE SYSTEM PIPING IS STANDARDLY TO THE RIGHT END OF THE HOOD UNLESS A WALL IS LOCATED ON THE RIGHT END.
- ANSUL AUTOMAN RELEASE TO BE LOCATED WITHIN 60" OF HOOD.

THE BASIC FIRE SYSTEM WILL INCLUDE THE FOLLOWING:

- GAS SHUT-OFF VALVE, IF REQUIRED, TO BE SUPPLIED BY MANUFACTURER (UP TO 2" DIAMETER AS STANDARD), AND INSTALLED BY A LICENSED PLUMBER.
- MICRO SWITCH TO BE SUPPLIED BY MANUFACTURER FOR CONNECTION TO, BUT NOT LIMITED TO, BUILDING ALARM SYSTEM(S), EXHAUST AND SUPPLY FANS AND ELECTRICAL POWER SHUT DOWN. FIELD WIRING AND CONNECTIONS TO BE PERFORMED BY A LICENSED ELECTRICIAN.

THE BASIC FIRE SYSTEM DOES NOT INCLUDE THE FOLLOWING:

- FULL DUMP TEST OTHER THAN WHAT IS SPECIFIED PER THE INSTALLATION MANUAL, OR TO SATISFY A STATE OR LOCAL CODE. PERMIT AND TESTING FEES ARE NOT INCLUDED UNLESS NOTED UNDER THE EQUIPMENT SCHEDULE FOR THE FIRE SYSTEM.
- MORE THAN TWO TRIPS TO THE JOBSITE OR SPECIAL TRANSPORTATION, OR OVERNIGHT LODGING REQUIREMENTS IN REMOTE AREAS. NORMAL TRAVEL DISTANCE IS FIRST 50 MI. (80.5 KM) FROM OFFICE.
- SPECIAL CLASSES OR ADDITIONAL LABOR FOR ACCESS TO SECURITY SENSITIVE AREAS.
- INSTALLATION OF GAS SHUT-OFF VALVE.
- SPECIAL DRAWINGS REQUIRED TO SATISFY STATE OR LOCAL CODE. PLAN EXAMINATION FEES, PE OR FS APPROVAL STAMP.
- UNION LABOR, GOVERNMENT LABOR, OR PREVAILING WAGES REQUIRED FOR FINAL FIELD HOOK-UP.
- ANY AND ALL ELECTRICAL COMPONENTS/CONNECTIONS REQUIRED TO SHUT DOWN FANS, SHUT OFF DEVICE FOR ELECTRIC COOKING EQUIPMENT (SHUNT TRIP BREAKER), OR ACTIVATE AN ALARM SYSTEM, ETC.
- ANY DISMANTLING OR REASSEMBLY REQUIRED TO GAIN ACCESS TO THE FIRE SUPPRESSION PIPING LOCATED ON THE TOP OF THE HOOD.
- ROUGH-IN HIDDEN CONDUIT FOR REMOTE PULL STATION OR GAS VALVE (FLUSH MOUNTED PULL STATION).
- INSTALLATION OF MORE THAN (1) REMOTE PULL STATIONS OR DISTANCES GREATER THAN 20 FT (6.1M).
- PARTS OR LABOR REQUIRED TO CORRECT PIPING DUE TO COOKING EQUIPMENT CHANGES OR DEVIATION FROM PLANS. OR ANY CHARGES FOR MISSING OR ADDITIONAL PARTS OTHER THAN THOSE INDICATED ON THE FIRE SUPPRESSION DETAIL.

**WIRING DIAGRAM FOR MICRO SWITCHES**

**NOTES:**

IF ELECTRIC RELEASE, BOTH UPPER SWITCHES WILL BE USED FOR ACTUATING ADDITIONAL AUTOMANS (THEY WILL BE WIRED TO EACH OTHER AND TO THE BROWN WIRE ON THE ELECTRIC SOLENOID). THEREFORE, USE ONE OF THE UN-UTILIZED LOWER SWITCHES TO WIRE BACK TO CONTROL PANEL (DO NOT USE EITHER OF THE UPPER SWITCHES).

IF USING LOWER SWITCHES TO WIRE BACK TO CONTROL PANEL, NORMALLY-CLOSED WILL BE BLACK LEAD, AND NORMALLY-OPEN WILL BE BROWN LEAD.

DPDT SWITCHES PROVIDED BY MANUFACTURER MAY BE WIRED PER TYPICAL EXAMPLES SHOWN. VERIFY WITH LOCAL CODES AND EQUIPMENT SUPPLIED AS THE CONNECTION NEEDED FOR YOUR INSTALLATION.

**CONNECTION TO BUILDINGS ALARM**

**CONNECTION TO KC (PCB) CONTROL PANEL**

**NOTES:**

1. --- DENOTES FIELD INSTALLATION.  
 2. ——— DENOTES FACTORY INSTALLATION.

**WIRING DIAGRAM FOR MANUAL RESET RELAY (ELECTRIC GAS VALVE ONLY)**

ANSUL PN 426151 (FACTORY PN 468825)

**\*\*GAS VALVES: "UL LISTED ELECTRICALLY-OPERATED SAFETY VALVE FOR NATURAL OR LP GAS AS NEEDED OF APPROPRIATE PRESSURE AND TEMPERATURE RATING, 110/600 KPa" OR ANSUL GAS VALVES, PART NUMBERS 13707, 13708, 13709, 13710 AND 17643.**

SEE ANSUL MANUAL SECTION 5 - INSTALLATION INSTRUCTIONS FOR ADDITIONAL WIRING SCHEMATICS FOR MANUAL RESET RELAY

