

Report By:

National TAB
1329 E. KEMPER ROAD
SUITE 4210
CINCINNATI, OH 45246



Report: TAB

Function: Test, Adjust, & Balance

Date: 06/30/2025

Completed By: National TAB

PROJECT

06-30-25 CHIPOTLE #5591 HORN LAKE, MS

4345 GOODMAN RD

HORN LAKE, MS 38637

Client

Chipotle Mexican Grill
610 Newport Center Drive, Suite 1100

Newport Beach, CA 92660

National TAB

Project: 06-30-25 CHIPOTLE #5591 HORN LAKE, MS

Table Of Contents

| Section | Page # |
|---------------------|---------------|
| SUMMARY | 3 |
| REMARKS | 4 |
| BALANCE SCHEDULE | 7 |
| Checklist Data | 8 |
| AHU/RTU | 18 |
| FAN - Exhaust | 22 |
| FAN - Supply | 25 |
| Kitchen Hood Type I | 26 |
| GRD LAYOUT | 28 |

Project Summary

The summary below provides a quick understanding of our scope of work and general testing procedures. Enclosed in the report is further detail about your building performance including recommendations, asset data, and pictures. Our focus is to work with the trades to remedy any issues or deficiencies during the actual field balancing and not after the balancing has occurred to achieve a positive environment and outcome. The level of success is determined by the availability of the trades, possible parts needed, or time constraints.

RTU's (Roof Top Units) w/ Diffusers

Each of the RTU's were measured at their terminal devices or via traverse to establish a total flow for that unit. Each RTU was adjusted to within tolerance of the engineer's design flow. Each outlet was then adjusted to within tolerance of the design flow. Outside air was measured by reading the intake air opening with a velocity grid and multiplying by the free area. The outside air damper was adjusted until the airflow was within the design requirements. Any equipment that fell outside of that tolerance is noted throughout the report.

Kitchen Exhaust Hood & Associated Fans

Each kitchen exhaust fan was measured at the hood filter bay utilizing a velocity matrix and a manufacturer's correction factor. Each filter velocity is multiplied by the manufacturer's corrected area. The sum of these readings equals the total flow of the exhaust fans. The total flow of the exhaust was then adjusted to within tolerance of the design flow. . Any EF's that fell outside of this tolerance is noted throughout the report.

MUA (Make Up Air Unit) w/ PSP

Total flow for the MAU (Make-up Air Unit) unit was measured by readings taken at the discharge of the hood's perforated supply plenum. Readings taken with a velocity matrix were averaged and multiplied by a manufacturer's corrected area. Adjustments to the fan speed were made in order to bring the unit to within design tolerance. Any MUA's that fell outside of this tolerance is noted throughout the report.

General Exhaust Fans w/ Grilles

The general exhaust fans were measured by reading each air device with a flow hood. The total airflow for each fan is equivalent to the sum of these readings. Fan speed was then adjusted so that the airflow was within tolerance of design. Each terminal device was balanced to within tolerance of the design volume using the installed volume dampers. Any equipment that fell outside of this tolerance is noted throughout the report.

Final Building Tests

After completing the test and balance the final building pressure was measured. It was confirmed that the building pressure fell within acceptable tolerances of $-0.02''$ wc to $+0.02''$ wc and that the pressure measurement coincides with the actual and design net airflow. Any deviations from these standards are noted throughout the report.

The hood capture was tested at the perimeter of the hood and the cook top level with the equipment heat on to ensure satisfactory hood capture and containment.

Issue List

- EF 2-2 ductwork not properly sealed
- MAU not operational



06-30-25 CHIPOTLE #5591 HORN LAKE, MS

Project Issue Information

Issue Name : EF 2-2 ductwork not properly sealed
Description : Ductwork is there but is not fully connected causing low total airflow. A temporary solution has been applied to make the unit able to be balanced. Installers have been contacted to come back out.
Created By : National TAB **Assigned To :** National TAB - Dan Hertenstein
Status : Open
Priority : High **Asset Tag :**
Originated Date : 06/25/2025 - Aaron Cosby - National TAB

Project Issue File Details



06/25/2025



06/25/2025



06-30-25 CHIPOTLE #5591 HORN LAKE, MS

Project Issue Information

Issue Name : MAU not operational

Description : Unit was not assembled properly before delivery. Fan bracket was missing upon arrival and cannot run without immediate danger to the unit or someone. A tech will be sent out Monday 6/30 to assemble. GC's punch is Tuesday 7/1 and turnover is Tuesday 7/8

Created By : National TAB

Assigned To : National TAB - Will Turnbough

Status : Open

Priority : Urgent

Asset Tag :

Originated Date : 06/25/2025 - Aaron Cosby - National TAB

AIR BALANCE SCHEDULE

| UNIT | AREA SERVED | HVAC SUPPLY | | HVAC RETURN | | HVAC OUTDOOR | | OA % | | HOOD MAKE-UP | | HOOD EXHAUST | | GENERAL EXH. | |
|---------------|-------------|-------------|--------|-------------|--------|--------------|--------|--------|--------|--------------|--------|--------------|--------|--------------|--------|
| | | DESIGN | ACTUAL | DESIGN | ACTUAL | DESIGN | ACTUAL | DESIGN | ACTUAL | DESIGN | ACTUAL | DESIGN | ACTUAL | DESIGN | ACTUAL |
| RTU-1 | KITCHEN | 4000 | 3781 | 3250 | 2963 | 750 | 818 | 18.8% | 21.6% | | | | | | |
| RTU-2 | DINING | 4000 | 4179 | 3250 | 3466 | 750 | 713 | 18.8% | 17.1% | | | | | | |
| MUA-1 | HOOD | | | | | | | | | 1300 | 0 | | | | |
| EF-1 | HOOD FAN | | | | | | | | | | | 2550 | 2274 | | |
| EF-2 | RESTROOMS | | | | | | | | | | | | | 150 | 164 |
| TOTALS | | 8000 | 7960 | 6500 | 6429 | 1500 | 1531 | | | 1300 | 0 | 2550 | 2274 | 150 | 164 |

NET BUILDING AIRFLOW CALCULATION

| TOTALS | DESIGN | ACTUAL |
|--------------------|------------|-------------|
| TOTAL OA | 2800 | 1531 |
| TOTAL EXHAUST | 2700 | 2438 |
| NET AIRFLOW | 100 | -907 |

| DOOR TESTED | BUILDING PRESSURE MEASUREMENTS (IN. H2O) |
|----------------|------------------------------------------|
| FRONT | NA |
| SIDE | NA |
| REAR | NA |
| AVERAGE | #DIV/0! |

FINAL CHECKS

ACTUAL NET AIRFLOW COINCIDES WITH DESIGN: !

MEASURED PRESSURES COINCIDES WITH ACTUAL NET AIRFLOW:

PRESSURE FALLS WITHIN IMC TOLERANCE OF +/-0.02" W.C.

NOTES:

MAU not operational at time of this file

CheckList List

- EF'S
- FINAL TESTS
- HOODS
- MUA
- RTU'S/AHU'S



06-30-25 CHIPOTLE #5591 HORN LAKE, MS

CheckList Information

Name : EF'S **Status :** Completed

Assigned Organization : National TAB **Asset :**

Requesting Organization : National TAB

Created Date : 05/13/2025 - Tara Metcalf - National TAB

Completed Date : 07/01/2025 - Zack Eismin - National TAB

CheckList Item Details

EF's

| | |
|----------------------|-----|
| Rotation is correct? | Yes |
|----------------------|-----|

Comment:

| | |
|------------------|-----|
| Belts are tight? | N/A |
|------------------|-----|

Comment:

| | |
|-------------------------------------|-----|
| Viroguard installed on hood fan(s)? | Yes |
|-------------------------------------|-----|

Comment:

| | |
|--------------------------------------------|-----|
| Hinge kit installed installed on hood fan? | Yes |
|--------------------------------------------|-----|

Comment:

| | |
|---------------------------------------------------------------------------------------------------------|-----|
| Lean fan back. Is grease duct installation adequate and is duct ran all the way to the base of the fan? | Yes |
|---------------------------------------------------------------------------------------------------------|-----|

Comment:

| | |
|------------------------------------------------------------------------|-----|
| Flex conduit is long enough so that fan can be completely tilted back? | Yes |
|------------------------------------------------------------------------|-----|

Comment:

There is no major leakage around base of fan?

Yes

Comment:

Is the motor operating below the motor FLA rating?

Yes

Comment:

For restroom fan(s) is the back draft damper installed and can it fully open?

Yes

Comment:

Unit free of noticeable noise and vibration?

Yes

Comment:



06-30-25 CHIPOTLE #5591 HORN LAKE, MS

CheckList Information

Name : FINAL TESTS **Status :** Completed

Assigned Organization : National TAB **Asset :**

Requesting Organization : National TAB

Created Date : 05/13/2025 - Tara Metcalf - National TAB

Completed Date : 07/01/2025 - Aaron Cosby - National TAB

CheckList Item Details

FINAL CHECKS

Is space free of drafting? Yes

Comment:

Is space comfortable in all areas? Yes

Comment:

Is the space free of ventilation noise? Yes

Comment:

List kitchen equipment turned on for testing N/A

Comment:

Smoke test not done because MAU inoperable

List smoke candle type used

Comment:

Smoke test not done because MAU inoperable

HOOD CAPTURE TEST

Smoke test capture % - Perimeter of hood

Comment:

Smoke test not done because MAU inoperable

Smoke test capture % - Top of cooking surface

Comment:

WITNESS

Date test was completed

N/A

Comment:

Smoke test not done because MAU inoperable

TAB tech name / Firm

Comment:

NA

Site super name / Firm

Comment:

NA

Owner representative name / Firm (if Applicable)

Comment:

NA

BUILDING PRESSURE

Do actual net building airflow, design net building airflow, and pressure coincide? If not why? (All three should either be positive or negative)

Comment:



06-30-25 CHIPOTLE #5591 HORN LAKE, MS

CheckList Information

Name : HOODS **Status :** Completed

Assigned Organization : National TAB **Asset :**

Requesting Organization : National TAB

Created Date : 05/13/2025 - Tara Metcalf - National TAB

Completed Date : 07/01/2025 - Aaron Cosby - National TAB

CheckList Item Details

HOODS

All hood filters installed and accounted for? Yes

Comment:

Hoods are wired and have power? Yes

Comment:

Hood is free of alarms? Yes

Comment:

Hood is free of damage? Yes

Comment:

Quarter or full vertical end panels are installed if specified? Yes

Comment:



06-30-25 CHIPOTLE #5591 HORN LAKE, MS

CheckList Information

Name : MUA **Status :** Completed
Assigned Organization : National TAB **Asset :**
Requesting Organization : National TAB
Created Date : 05/13/2025 - Tara Metcalf - National TAB
Completed Date : 07/01/2025 - Aaron Cosby - National TAB

CheckList Item Details

MUA

| | |
|----------------------|-----|
| Rotation is correct? | N/A |
|----------------------|-----|

Comment:

| | |
|--------------------------------------------------------|----|
| Gas piping is installed and valves are in on position? | No |
|--------------------------------------------------------|----|

Comment:

| | |
|---------------------------------------------|-----|
| Internal motorized damper is fully opening? | N/A |
|---------------------------------------------|-----|

Comment:

| | |
|------------------------------------------|-----|
| Motor is operating below the FLA rating? | N/A |
|------------------------------------------|-----|

Comment:

| | |
|----------------------------------------------|-----|
| Unit free of noticeable noise and vibration? | N/A |
|----------------------------------------------|-----|

Comment:

Notes/Comments :

Unit inoperable at time of first visit



06-30-25 CHIPOTLE #5591 HORN LAKE, MS

CheckList Information

Name : RTU'S/AHU'S **Status :** Completed
Assigned Organization : National TAB **Asset :**
Requesting Organization : National TAB
Created Date : 05/13/2025 - Tara Metcalf - National TAB
Completed Date : 07/01/2025 - Aaron Cosby - National TAB

CheckList Item Details

RTU's/AHU's

Thermostats installed and have power? Yes

Comment:

All diffusers and grilles are installed and match design? Yes

Comment:

Deflector plates are removed from 1x1 diffusers on the serve line (double check that this is specified on the diffuser schedule first) Yes

Comment:

Economizer blank plate is installed below the outside air intake (Trane only) (N/A = not applicable) N/A

Comment:

Economizers are assembled and functional? Yes

Comment:

DCV Max damper opening position is set to minimum? N/A

Comment:

Free cooling enthalpy set point set for lowest setting (Typically "D")

N/A

Comment:

Motors are all operating below the FLA rating?

Yes

Comment:

Are belts tight?

N/A

Comment:

If direct drive unit is the speed controller working?

Yes

Comment:

Is gas piping installed and valves turned on?

Yes

Comment:

Unit free of noticeable noise and vibration

Yes

Comment:

Final outside air damper position is marked with permanent marker?

Yes

Comment:

National TAB

Project: 06-30-25 CHIPOTLE #5591 HORN LAKE, MS

System/Unit: AHU/RTU



Asset: RTU1

AREA: KITCHEN

| Unit Data | | |
|---------------------|----------|------------|
| | Design | Actual |
| MFG | CARRIER | CARRIER |
| Serial Num | - | 0424P63034 |
| Model Num | 48FCFN12 | 48FCFN12 |
| Type | RTU | RTU |
| Configuration | VERTICAL | VERTICAL |
| Num OA Filters 1 | - | 1 |
| OA Filter Size 1 | - | 35X19" |
| Num Final Filter 1 | - | 4 |
| Final Filter Size 1 | - | 20X20X2 |

| Test Data | | |
|------------------------|--------|-------------|
| | Design | Actual |
| SF CFM | 3750 | 3781 |
| SF RPM | - | 2024 |
| RA CFM | 3250 | 2963 |
| OA CFM | 750 | 818 |
| RL Voltage | - | 211/212/212 |
| RL Amperage | - | 7.4/7.4/7.5 |
| SF Rotation | - | CCW |
| SF System SetPt | - | 8.7VDC |
| Min OA Damper Position | - | 3.60V |

| Motor Data | | |
|----------------|--------|--------|
| | Design | Actual |
| Phase | 3 | 3 |
| Rated Voltage | 208 | 208 |
| Rated Amperage | - | 12.6 |

| Performance Data | | |
|------------------|--------|--------|
| | Design | Actual |
| MA Plenum SP | - | -1.04" |
| Fan Suction SP | - | -1.63" |
| Fan Discharge SP | - | 0.34" |
| Total ESP | 0.80" | 1.38" |
| Fan Total SP | - | 1.94" |

| General | |
|----------------------------|--------|
| | Actual |
| Fan Rotation Correct | YES |
| Unit Filters Clean | YES |
| Condensate Drain Installed | YES |

Completed By: Aaron Cosby on 06/26/2025

Notes:
Pressures high. Return duct, return damper, and MA compartment checked. All good

Written By: Aaron Cosby on 06/26/2025

Unit Data - PHOTO LOG



06/25/2025

National TAB

Project:06-30-25 CHIPOTLE #5591 HORN LAKE, MS

AHU/RTU



Diffuser Supply (GRD)

RTU1/KITCHEN

| Asset | | | | | | | | | |
|------------|----------|-------|-------|------------|----|--------|--------|-----------|-------------|
| Asset Name | Location | Type | Size | DESIGN CFM | AK | CFM(1) | CFM(2) | FINAL CFM | % to design |
| SGRD1 | KITCHEN | CD1 | 12" | 400 | 1 | 547 | 412 | 412 | 103.0 |
| SGRD2 | KITCHEN | CD1 | 12" | 400 | 1 | 541 | 413 | 413 | 103.3 |
| SGRD3 | HOOD AC | ACPSP | 85X14 | 700 | 1 | 725 | 764 | 764 | 109.1 |
| SGRD4 | KITCHEN | CD1 | 10" | 350 | 1 | 338 | 323 | 323 | 92.3 |
| SGRD5 | KITCHEN | CD1 | 10" | 350 | 1 | 318 | 340 | 340 | 97.1 |
| SGRD6 | KITCHEN | CD1 | 10" | 350 | 1 | 397 | 366 | 366 | 104.6 |
| SGRD7 | KITCHEN | CD1 | 10" | 350 | 1 | 392 | 338 | 338 | 96.6 |
| SGRD8 | KITCHEN | CD1 | 10" | 400 | 1 | 385 | 381 | 381 | 95.3 |
| SGRD9 | KITCHEN | CD1 | 10" | 400 | 1 | 366 | 390 | 390 | 97.5 |
| SGRD10 | KITCHEN | CD3 | 6" | 50 | 1 | 103 | 54 | 54 | 108.0 |
| Total | | | | 3750 | | 4112 | 3781 | 3781 | 100.83% |

Completed By: Aaron Cosby on 06/25/2025

National TAB

Project: 06-30-25 CHIPOTLE #5591 HORN LAKE, MS

System/Unit: AHU/RTU



Asset: RTU2

AREA:DINING

| Unit Data | | |
|---------------------|----------|------------|
| | Design | Actual |
| MFG | CARRIER | CARRIER |
| Serial Num | - | 0723P72808 |
| Model Num | 48FCFN14 | 48FCFN14 |
| Type | RTU | RTU |
| Configuration | VERTICAL | VERTICAL |
| Num OA Filters 1 | - | 1 |
| OA Filter Size 1 | - | 35X19" |
| Num Final Filter 1 | - | 4 |
| Final Filter Size 1 | - | 20X20X2" |

| Motor Data | | |
|----------------|--------|--------|
| | Design | Actual |
| Phase | 3 | 3 |
| Rated Voltage | 208 | 208 |
| Rated Amperage | - | 7.5 |

| Test Data | | |
|------------------------|--------|-------------|
| | Design | Actual |
| SF CFM | 4000 | 4179 |
| SF RPM | - | 1756 |
| RA CFM | 3250 | 3466 |
| OA CFM | 750 | 713 |
| RL Voltage | - | 211/210/210 |
| RL Amperage | - | 6.5/6.5/7.5 |
| SF Rotation | - | CCW |
| SF System SetPt | - | 7.5VDC |
| Min OA Damper Position | - | 3.45V |

| Performance Data | | |
|------------------|--------|--------|
| | Design | Actual |
| MA Plenum SP | - | -0.78" |
| Fan Suction SP | - | -1.33" |
| Fan Discharge SP | - | 0.53" |
| Total ESP | 0.80" | 1.31" |
| Fan Total SP | - | 1.86" |

| General | |
|----------------------------|--------|
| | Actual |
| Fan Rotation Correct | YES |
| Unit Filters Clean | YES |
| Condensate Drain Installed | YES |

Completed By: Aaron Cosby on 06/26/2025

Unit Data - PHOTO LOG



06/25/2025

National TAB

Project:06-30-25 CHIPOTLE #5591 HORN LAKE, MS

AHU/RTU



Diffuser Supply (GRD)

RTU2/DINING

| Asset | | | | | | | | | |
|------------|----------|------|------|------------|----|--------|--------|-----------|-------------|
| Asset Name | Location | Type | Size | DESIGN CFM | AK | CFM(1) | CFM(2) | FINAL CFM | % to design |
| SGRD1 | DINING | SR2 | 18" | 500 | 1 | 443 | 544 | 544 | 108.8 |
| SGRD2 | DINING | SR2 | 18" | 500 | 1 | 337 | 535 | 535 | 107.0 |
| SGRD3 | DINING | SR1 | 14" | 600 | 1 | 780 | 561 | 561 | 93.5 |
| SGRD4 | DINING | SR1 | 14" | 600 | 1 | 823 | 605 | 605 | 100.8 |
| SGRD5 | DINING | SR1 | 14" | 600 | 1 | 695 | 641 | 641 | 106.8 |
| SGRD6 | DINING | SR1 | 14" | 600 | 1 | 758 | 638 | 638 | 106.3 |
| SGRD7 | DINING | SR1 | 14" | 600 | 1 | 648 | 655 | 655 | 109.2 |
| Total | | | | 4000 | | 4484 | 4179 | 4179 | 104.48% |

Completed By: Aaron Cosby on 06/25/2025

National TAB

Project: 06-30-25 CHIPOTLE #5591 HORN LAKE, MS

System/Unit: FAN - Exhaust



Asset: EF1

AREA: KITCHEN HOOD FAN

| Unit Data | | |
|---------------|-------------|-------------|
| | Design | Actual |
| MFG | ACCUREX | ACCUREX |
| Model Num | XCUE-160-VG | XCUE-160-VG |
| Serial Num | - | 26723209 |
| Type | UPBLAST | DOWNBLAST |
| Configuration | VERTICAL | VERTICAL |

| Motor Data | | |
|------------------|--------|--------|
| | Design | Actual |
| Motor MFG | - | BALDOR |
| Frame | - | 145T |
| Horsepower | 2 | 2 |
| Motor Rpm | 1725 | 1800 |
| Phase | 1 | 3 |
| Voltage (rated) | 208 | 230 |
| Amperage (rated) | - | 4.8 |
| Service Factor | - | 1 |

| Test Data | | |
|------------------|--------|-------------|
| | Design | Actual |
| CFM | 2550 | 2274 |
| Fan RPM | 1330 | NA |
| Fan Rotation | - | NA |
| Motor RPM | - | NA |
| System SetPt | - | 6.3VDC |
| RL Voltage | - | 210 |
| RL Amperage | - | 1.5/1.5/1.5 |
| Total ESP | 1.20" | -0.75" |
| Fan Inlet SP | - | -0.75" |
| Fan Discharge SP | - | ATM |

Completed By: Aaron Cosby on 06/26/2025

Unit Data - PHOTO LOG



06/25/2025

National TAB

Project: 06-30-25 CHIPOTLE #5591 HORN LAKE, MS

System/Unit: FAN - Exhaust



Asset: EF2

AREA:RESTROOM

| Unit Data | | |
|---------------|-------------|-------------|
| | Design | Actual |
| MFG | ACCUREX | ACCUREX |
| Model Num | XCUE-097-VG | XCUE-097-VG |
| Serial Num | - | 26715417 |
| Type | UPBLAST | DOWNBLAST |
| Configuration | VERTICAL | VERTICAL |

| Test Data | | |
|------------------|--------|--------|
| | Design | Actual |
| CFM | 150 | 164 |
| Fan RPM | 1330 | NA |
| Fan Rotation | - | CCW |
| Motor RPM | - | NA |
| System SetPt | - | MAX |
| RL Voltage | - | 122 |
| RL Amperage | - | 1.70 |
| Total ESP | .60" | 0.21" |
| Fan Inlet SP | - | -0.21" |
| Fan Discharge SP | - | ATM |

| Motor Data | | |
|------------------|--------|------------|
| | Design | Actual |
| Motor MFG | - | VARI-GREEN |
| Horsepower | .25 | 0.25 |
| Motor Rpm | 1725 | 1750 |
| Phase | 1 | 1 |
| Voltage (rated) | 120 | 115 |
| Amperage (rated) | - | 2.85 |
| Service Factor | - | 1.25 |

Completed By: Aaron Cosby on 06/26/2025

Unit Data - PHOTO LOG



06/25/2025

National TAB

Project:06-30-25 CHIPOTLE #5591 HORN LAKE, MS

FAN - Exhaust



Diffuser Ret/Exh (GRD)

EF2/RESTROOM

| Asset | | | | | | | | | |
|------------|----------|------|------|------------|----|--------|--------|-----------|-------------|
| Asset Name | Location | Type | Size | DESIGN CFM | AK | CFM(1) | CFM(2) | FINAL CFM | % to design |
| EGRD1 | RESTROOM | ER1 | 6" | 75 | 1 | 34 | 34 | 83 | 110.7 |
| EGRD2 | RESTROOM | ER1 | 6" | 75 | 1 | 75 | 75 | 81 | 108.0 |
| Total | | | | 150 | | 109 | 109 | 164 | 109.33% |

National TAB

Project: 06-30-25 CHIPOTLE #5591 HORN LAKE, MS

System/Unit: FAN - Supply



Asset: MUA1

AREA:HOOD MUA

| Unit Data | | |
|---------------|------------------|------------------|
| | Design | Actual |
| MFG | ACCUREX | ACCUREX |
| Model Num | XDGX-9115-HO5-VG | XDGX-9115-HO5-VG |
| Serial Num | - | 26714577 |
| Type | MUA | MUA |
| Configuration | VERTICAL | HORIZONTAL |

| Motor Data | | |
|------------------|--------|--------|
| | Design | Actual |
| Motor MFG | - | NA |
| Frame | - | NA |
| Horsepower | - | NA |
| Motor Rpm | 1725 | NA |
| Phase | 1 | 1 |
| Voltage (rated) | 115 | 115 |
| Amperage (rated) | - | 11.5 |
| Service Factor | - | NA |

| Gas Heat | | |
|---------------------------|--------|--------|
| | Design | Actual |
| Heater Operates (y/n) | - | N |
| Flame Status (pass/fail) | - | Fail |
| Inlet Air Temp SetPt | - | 0 |
| Discharge Air Temp SetPt | - | 0 |
| Air Flow Switch SP Actual | - | 0 |

| Test Data | | |
|------------------|--------|--------|
| | Design | Actual |
| CFM | 1300 | 0 |
| SF RPM | - | 0 |
| Motor RPM | - | 0 |
| SF System SetPt | - | 0 |
| RL Voltage | - | 0 |
| RL Amperage | - | 0 |
| Total ESP | - | 0 |
| Fan Discharge SP | - | 0 |

| General | |
|----------------------|--------|
| | Actual |
| Fan Rotation Correct | NA |

Unit Data - PHOTO LOG



06/25/2025

National TAB

Project: 06-30-25 CHIPOTLE #5591 HORN LAKE, MS

System/Unit: Kitchen Hood Type I



Asset: HD1

AREA: KITCHEN HOOD

| Unit Data | | |
|----------------------|-----------------|---------------|
| | Design | Actual |
| MFG | ACCUREX | ACCUREX |
| Model Num | XXEW-153-S | XXEW-153-S |
| Job / Serial Num | - | 267727017 |
| Type | TYPE I - CANOPY | TYPE I CANOPY |
| Hood length | 153" | 153" |
| Hood Width | 54" | 54" |
| Supply Plenum Type | - | ACPSP |
| Supply Plenum Width | - | 14" |
| Supply Plenum Length | - | 165.5" |

| Test Data Exhaust | | |
|--------------------------|-----------|--------------------------|
| | Design | Actual |
| Filter Type | X-TRACTOR | X-TRACTOR |
| Filter Size 1 | 16X20 | 16X20 |
| Filter Size 2 | 20X20 | 20X20 |
| Filter Qty 1 | 2 | 2 |
| Filter Qty 2 | 6 | 6 |
| Filter AK factor size 1 | 1.53 | 2 |
| Filters AK factor size 2 | 2.26 | 3 |
| Filter Total AK Area | 16.62 | 22 |
| Filter1 FPM | - | 95 |
| Filter2 FPM | - | 116 |
| Filter3 FPM | - | 92 |
| Filter4 FPM | - | 112 |
| Filter5 FPM | - | 126 |
| Filter6 FPM | - | 107 |
| Filter7 FPM | - | 92 |
| Filter8 FPM | - | 93 |
| Filter Ave FPM(corr) | - | 103(20X20) 105(16X20) |
| CFM | 2550 | 2274 |

| Cooking Equipment | |
|-------------------|--------|
| | Actual |
| Item 1 | GRILL |
| Item 2 | FRYER |

| Test Data Supply | | |
|------------------|--------|--------|
| | Design | Actual |
| Total Area | 8.02 | 0 |
| Kv factor (Vel) | .89 | 0 |
| Num of Readings | - | 0 |
| Reading1 FPM | - | 0 |
| Reading2 FPM | - | 0 |
| Reading3 FPM | - | 0 |
| Reading4 FPM | - | 0 |
| Reading5 FPM | - | 0 |
| Reading6 FPM | - | 0 |
| Reading7 FPM | - | 0 |
| Reading8 FPM | - | 0 |
| Reading9 FPM | - | 0 |
| Reading10 FPM | - | 0 |
| Reading11 FPM | - | 0 |
| Reading12 FPM | - | 0 |
| Reading13 FPM | - | 0 |
| Reading14 FPM | - | 0 |
| Ave FPM(corr) | - | 0 |
| CFM | 1300 | 0 |

Unit Data - PHOTO LOG



06/25/2025

GH ROOF.
 REFRIGERANT LINE
 FRIGERANT PIPING TO
 SHROUD AS SHOWN

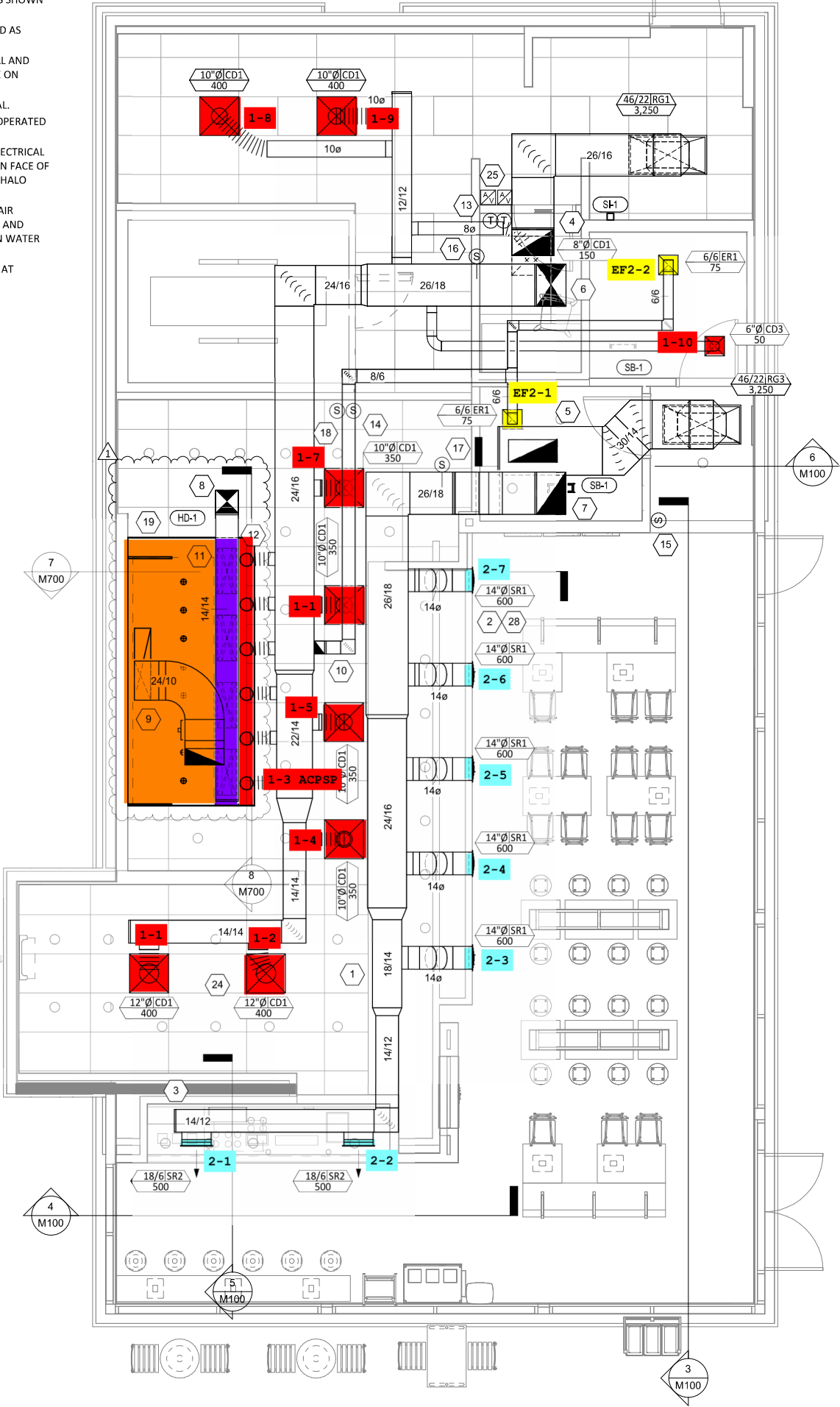
CTIONS AND AS

HITECTURAL AND
 Y CHIPOTLE ON

700. TYPICAL.
 NOTE KEY OPERATED
 TYPICAL.
 700. SEE ELECTRICAL
 STICKERS ON FACE OF
 THE REME HALO

OUTSIDE AIR
 AIR INTAKE AND
 MATION ON WATER

OF ROOM AT



FOI

COPYRIGHT 202
 THIS DRAWING
 AND AS SUCH R
 CHIPOTLE MEXI
 USE OF THIS DC
 EXTENDED ONL
 CHIPOTLE MEXI



CHIP
 CO
 TEL
 INTER

STORE NO.: 5591

Issue Record:
 10/17/2024

Revisions:
 1 02/26/25

Drawn:
 IJD

Project No.
 241085

Contents:
 HVAC I

Date: 7/1/2025

 **HVAC FLOOR PLAN**
 1/4" = 1'-0" Page 28 of 28

