

SECTION 15732 - PACKAGED ROOFTOP AIR-CONDITIONING UNITS

- PART 1 - GENERAL
1.1 SECTION REQUIREMENTS
A. Submittals: Product Data and Shop Drawings.
B. Comply with ASHRAE 15.
C. EER: Equal to or greater than prescribed by the energy code adopted by the Authority Having Jurisdiction.
D. Warranties: Submit a written warranty, signed by the manufacturer, agreeing to the repair or replacement of components that fail within 5 years of Substantial Completion.
PART 2 - PRODUCTS
2.1 PACKAGED UNITS, 5 TO 20 TONS
A. Factory assembled and tested, consisting of compressors, condensers, evaporator coils, condenser and evaporator fans, refrigeration and temperature controls, filters, and dampers.
1. Refer to Rooftop Heating/Cooling Unit Schedule on drawing M600 for capacities, and manufacturers.
2. Evaporator Fans: Belt or direct driven, forward curved centrifugal.
3. Exhaust/Relief Fans: Direct drive, forward curved centrifugal or propeller.
4. Condenser Fans: Direct drive propeller.
5. Refrigerant Coils: Aluminum fins and copper coil.
6. Compressors: Serviceable hermetic or fully hermetic, with safety controls, hot gas bypass, and timed off controls.
7. Heat Exchangers: Gas fired, with gas controls, electronic ignition, high limit cutout, and forced draft proving switch.
8. Economizer controls (Comparative Enthalpy, 100% capacity).
9. Smoke Detectors: Photoelectric in supply and/or return as called for in schedule on sheet M600.
10. Operating Controls: Two stage heating and two stage cooling on units 7-1/2 tons and over.
11. Roof curb.
12. Control Wiring from T-stat to rooftop unit: Shall be 18ga / 7 conductor, rated for plenum applications.
13. Control Wiring from T-stat to remote sensor: Shall be a separate 18ga / 2 conductor shielded, rated for plenum applications.

- PART 3 - EXECUTION
3.1 INSTALLATION
A. Install units level and plumb and firmly anchored.
B. Connect gas piping to burner with pipe same size as gas train inlet, and provide union with sufficient clearance for burner removal and service.
C. Install ducts to termination in roof mounting frames. Terminate ducts through roof structure.
D. Connect units to wiring systems and to ground.
END OF SECTION 15732

SECTION 15810 - DUCTS AND ACCESSORIES

- PART 1 - GENERAL
1.1 SECTION REQUIREMENTS
A. Submittals: Product Data for fire and smoke dampers.
B. Comply with NFPA 90A for systems serving spaces more than 25,000 cu. ft. in volume or building Types II, IV, and V construction more than 3 stories in height.
C. Comply with NFPA 90B for systems serving spaces in 1 or 2 family dwellings or serving spaces less than 25,000 cu. ft.
D. Comply with NFPA 96, "Ventilation Control and Fire Protection of Commercial Cooking Operations," for kitchen hood ducts.
E. Comply with UL 181 and UL 181A for ducts and closures.
F. Testing, Adjusting, and Balancing Agency Qualifications: AABC certified (to be furnished by Tenant).
PART 2 - PRODUCTS
2.1 DUCTS
A. Spiral Duct: Spiral Lock Seam, without insulation, G90 galvanized finish, ASTM A-653/924
1. Basis of Design Manufacturers: Lindab SPIROsafe, alternates to the basis of design must be submitted for review.
2. Fittings: Factory produced standing seam construction with internal sealing. Fittings with a major axis of 36" or smaller shall be 20 gauge. Fittings with a major axis of 37"-48" shall be 18 gauge.
B. Galvanized Steel Sheet: Forming steel, ASTM A 653/653M, G90 coating designation.
C. Duct Liner: ASTM C 1071, Type II, with an airstream surface coated with a Temperature resistant coating. Thickness: 1-1/2 inch, R-value: .8.
1. Adhesive: ASTM C 916, Type I.
2. Mechanical Fasteners: Galvanized steel pin, length as required to penetrate liner plus a 1/8 inch projection maximum into the airstream.
D. Joint and Seam Tape: Comply with UL 181A.
E. Joint and Seam Sealant: Comply with UL 181A.
F. Rectangular Metal Duct Fabrication: Comply with SMACNA's "HVAC Duct Construction Standard" for metal thickness, reinforcing types and intervals, tie rod applications, and joint types and intervals.

- 2.2 ACCESSORIES
A. Volume-Control Dampers: Factory fabricated volume control dampers, complete with required hardware and accessories. Single blade and multiple opposed blade, standard leakage rating, and suitable for horizontal or vertical applications.
B. Fire Dampers: Factory-fabricated fire dampers, complete with required hardware and accessories. UL labeled according to UL 555, "Fire Dampers".
C. Flexible Connectors: Flame retardant or noncombustible fabrics, coatings, and adhesives complying with UL 181, Class 1.
D. Flexible Ducts: Factory fabricated, insulated, round duct, with an outer jacket enclosing 2 inch thick, glass fiber insulation, R-value: 6.0, around a continuous inner liner.
PART 3 - EXECUTION
3.1 INSTALLATION
A. Duct System Pressure Class: Construct and install each duct system with 2 inch positive and negative duct pressure classifications.
B. Conceal ducts from view in finished and occupied spaces. Except where noted as exposed.
C. Avoid passing through electrical equipment spaces and enclosures.
D. Support and connect metal ducts according to SMACNA's "HVAC Duct Construction Standard".
E. Install duct accessories according to applicable portions of details of construction as shown in SMACNA standards.
F. Install liner and/or insulation on ductwork per the material schedule on sheet M010.
G. Install volume control dampers in lined duct with methods to avoid damage to liner and to avoid erosion of duct liner.
H. Install fire and smoke dampers according to manufacturer's UL approved written instructions.
I. Install fusible links in fire dampers.
J. Provide saddle taps at tees for exposed ductwork.
3.2 TESTING, ADJUSTING, AND BALANCING
A. The Tenant will supply an independent balance agent to to balance and adjust the HVAC installation. The balance agent will be responsible for any pulley or bolt changes required.
B. The GC is to have trained staffed available during the balancing to correct issues noted by the balance agent.
C. The balance agent is to balance airflow within distribution systems, including submain, branches, and terminals to indicated quantities +/- 10%. The hood exhaust system shall be balanced to a tolerance of -0+10% and the make-up air system to a tolerance of -10+0%.
D. The balance agent is to supply a copy of the balance report to the Tenant, engineer and general contractor for review.
END OF SECTION 15810

SECTION 15855 - DIFFUSERS, REGISTERS, AND GRILLES

- PART 1 - GENERAL
1.1 SECTION REQUIREMENTS
A. Submittals: None.
PART 2 - PRODUCTS
2.1 OUTLETS AND INLETS
A. All air terminal devices:
1. Refer to Grills, Registers, and Diffusers Schedule for equipment schedule
2. Manufacturer: As scheduled (NO SUBSTITUTIONS)
3. Material: As scheduled.
4. Finish: As scheduled.
5. Mounting: As scheduled.
PART 3 - EXECUTION
3.1 INSTALLATION
A. Coordinate location and installation with duct installation and installation of other ceiling and wall mounted items.
B. Locate ceiling diffusers, registers, and grilles, as indicated on the architectural "reflected ceiling plans." Unless otherwise indicated, locate units in center of acoustical ceiling panels.
END OF SECTION 15855

HVAC GENERAL NOTES

- A GENERAL NOTES APPLY TO HVAC SHEETS.
B WORK SHALL COMPLY WITH STATE AND LOCAL CODE REQUIREMENTS AS APPROVED AND AMENDED BY THE AUTHORITY HAVING JURISDICTION, INCLUDING APPLICABLE SECTIONS OF NFPA, THE MECHANICAL CODE, AND ANY INTERIM AMENDMENTS AT THE TIME OF THE PROPOSAL. PURCHASE PERMITS ASSOCIATED WITH THE WORK. OBTAIN INSPECTIONS REQUIRED BY CODE. SEE ARCHITECTURAL SHEETS FOR THE PREVAILING CODES.
C CONTRACTOR AND SUBCONTRACTORS SHALL REVIEW A COMPLETE SET OF THE CONSTRUCTION DOCUMENTS.
D COORDINATE WORK WITH THE WORK OF OTHER TRADES, EQUIPMENT FURNISHED BY OTHERS, REQUIREMENTS OF THE OWNER, AND OF THE EXISTING CONDITIONS AT THE PROJECT SITE.
E DRAWINGS FOR THE MECHANICAL WORK ARE DIAGRAMMATIC, SHOWING THE GENERAL LOCATION, TYPE, LAYOUT, AND EQUIPMENT REQUIRED. THE DRAWING SHALL NOT BE SCALED FOR EXACT MEASUREMENTS, REFER TO ARCHITECTURAL DRAWINGS FOR DIMENSIONS. REFER TO MANUFACTURER'S STANDARD INSTALLATION DRAWINGS FOR EQUIPMENT CONNECTIONS AND INSTALLATION REQUIREMENTS. PROVIDE DUCTWORK, CONNECTIONS, OFFSETS, ACCESSORIES, AND MATERIALS NECESSARY FOR A COMPLETE SYSTEM.
F DUCT DIMENSIONS ON PLANS INDICATE DIMENSIONS OF INTERNAL FREE AREA.
G PERFORATED CEILING DIFFUSERS SHALL BE 4-WAY UNLESS NOTED OTHERWISE.
H COORDINATE ROOF WORK WITH THE OWNER'S CONSTRUCTION MANAGER PRIOR TO CONSTRUCTION.
I UNLESS NOTED OTHERWISE RECTANGULAR DUCT ELBOWS GREATER THAN 45° SHALL BE MITERED ELBOWS WITH DOUBLE-THICKNESS TURNING VANES AND RECTANGULAR DUCT ELBOWS 45° OR LESS SHALL BE RADIIUSED ELBOWS WITH AN INSIDE RADIUS OF AT LEAST 1/2 THE WIDTH OF THE DUCT.
J REPLACE AIR FILTERS WITH NEW, CLEAN MERV 8 AIR FILTERS AT TURNOVER.
K THE TERM "FURNISH" MEANS SUPPLY AND DELIVER TO THE PROJECT SITE, READY FOR UNLOADING, UNPACKING, ASSEMBLY, INSTALLATION, AND SIMILAR OPERATIONS. THE TERM "INSTALL" DESCRIBES THE OPERATIONS AT THE PROJECT SITE INCLUDING THE ACTUAL UNLOADING, UNPACKING, ASSEMBLY, ERECTING, PLACING, ANCHORING, APPLYING, WORKING TO DIMENSION, FINISHING, CURING, PROTECTING, CLEANING, AND SIMILAR OPERATIONS. THE TERM "PROVIDE" MEANS TO FURNISH AND INSTALL, COMPLETE AND READY FOR THE INTENDED USE.
L PROVIDE LABELING CALLED FOR IN THE HVAC DRAWINGS USING ENGRAVED PHENOLIC PLATES.
M PROVIDE P3000 12 GA. UNISTRUT WITH PG FINISH FOR DUCT SUPPORTS AND OTHER UNISTRUT IN AREAS EXPOSED TO VIEW. SLOTTED UNISTRUT AND OTHER UNISTRUT WITH HOLES IS NOT ACCEPTABLE.

HVAC MATERIAL SCHEDULE table with columns: APPLICATION, ALLOWABLE MATERIAL. Rows include CONCEALED GENERAL EXHAUST, CONCEALED RETURN, CONCEALED SUPPLY, CONCEALED TYPE I HOOD EXHAUST, EXPOSED GENERAL EXHAUST, EXPOSED RETURN, EXPOSED SUPPLY.

HVAC ABBREVIATIONS

- (E) EXISTING
ABV ABOVE
ADA AMERICANS WITH DISABILITIES ACT
AFF ABOVE FINISHED FLOOR
AFG ABOVE FINISHED GRADE
AHI AUTHORITY HAVING JURISDICTION
BFF BELOW FINISHED FLOOR
BFG BELOW FINISHED GRADE
BOH BACK OF HOUSE
CLG CEILING
CTE CONNECT TO EXISTING
DN DOWN
EXT'G EXISTING
FLR FLOOR
FOH FRONT OF HOUSE
GYP GYPSUM BOARD
NTS NOT TO SCALE
OJH OVERHEAD
OBD OPPOSED BLADE DAMPER
TYP TYPICAL
UJG UNDERGROUND
UNO UNLESS NOTED OTHERWISE
VFD VARIABLE FREQUENCY DRIVE
VSC VARIABLE SPEED CONTROLLER
W/ WITH
WIC WALK-IN COOLER
CO2AS TENANT'S CO2 ALARM SUPPLIER
GC GENERAL CONTRACTOR
HES TENANT'S HVAC EQUIPMENT SUPPLIER
HS TENANT'S HOOD SUPPLIER
KES TENANT'S KITCHEN EQUIPMENT SUPPLIER
LL LANDLORD
SPS TENANT'S SODA POP SUPPLIER
TAB TENANT'S TEST AND BALANCE VENDOR
TCC TENANT'S CABLING CONTRACTOR
TDC TENANT'S DUCT CLEANER
TEM5 TENANT'S ENERGY MANAGEMENT SYSTEM SUPPLIER
TIS TENANT'S LIGHT/LAMP SUPPLIER
TMB TENANT'S MENU BOARD SUPPLIER
TMS TENANT'S MILLWORK SUPPLIER
TP TENANT'S PHONE SUPPLIER
TPS TENANT'S PANELBOARD SUPPLIER
TRS TENANT'S RAILING SUPPLIER
TSV TENANT'S SIGN VENDOR
TUV TENANT'S UV SNAITZER SUPPLIER
WCS TENANT'S WALK-IN COOLER SUPPLIER
WHS TENANT'S WATER HEATER SUPPLIER

HVAC SYMBOLS

- CEILING DIFFUSER
CEILING-MOUNTED RETURN OR EXHAUST REGISTER
SUPPLY REGISTER
RETURN GRILLE
FLEXIBLE DUCT
MITERED CORNER WITH TURNING VANES
DUCTWORK INTERNAL FREE DIMENSIONS (WIDTH/HEIGHT) RECTANGULAR TO ROUND DUCT TRANSITION
DUCT-MOUNTED SMOKE DETECTOR
MANUAL OPERATED DAMPER
MANUAL VOLUME DAMPER
GREASE DUCT CLEANOUT
MITERED CORNER WITHOUT TURNING VANES
GRIDPOINT THERMOSTAT
GRIDPOINT ZONE SENSOR MODULE
GRIDPOINT SUPPLY PROBE
PLAN NOTE: SEE PLAN NOTES LISTED ON THE SAME SHEET FOR NOTE MEANING
CONNECT TO EXISTING
EQUIPMENT TAG: SEE EQUIPMENT SCHEDULE ON SHEET M600 FOR EQUIPMENT INFORMATION
AUDIO/VISUAL REMOTE SMOKE DETECTOR ANNUNCIATOR WITH REMOTE KEY OPERATED RESET
GRILL, REGISTER, OR DIFFUSER TAG: TAG NECK SIZE AIRFLOW [CFM]

GF logo
www.greenbergfarrow.com
1230 Peachtree Street, NE
Suite 2900 Atlanta, GA 30309
t: 404 601 4000

COPYRIGHT 2022
THIS DRAWING IS AN INSTRUMENT OF SERVICE AND AS SUCH REMAINS THE PROPERTY OF CHIPOTLE MEXICAN GRILL, INC. PERMISSION FOR USE OF THIS DOCUMENT IS LIMITED AND CAN BE EXTENDED ONLY BY WRITTEN AGREEMENT WITH CHIPOTLE MEXICAN GRILL, INC.



CHIPOTLE MEXICAN GRILL, INC.
PO BOX 182566
COLUMBUS, OH 43218-2566
TELEPHONE: (614) 318-2482
INTERNET: WWW.CHIPOTLE.COM

STORE NO.: 4829
BLOOMSBURG, PA
ROUTE 42, BLOOMSBURG, PA 17815

Issue Record table with columns: REV, DATE, DESCRIPTION. Rows for 09/18/2023 LANDLORD SET and 11/06/2023 PERMIT SET

Engineer

Drawn: AN
Checked: MPC

Project No.
202213260

Contents:

HVAC SPECIFICATIONS

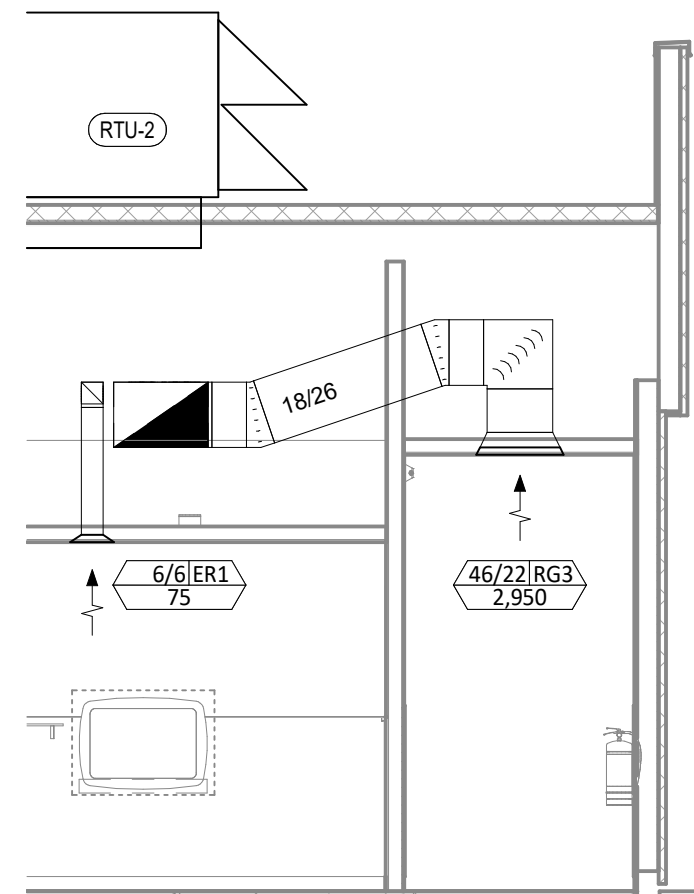
M010

HVAC PLAN NOTES

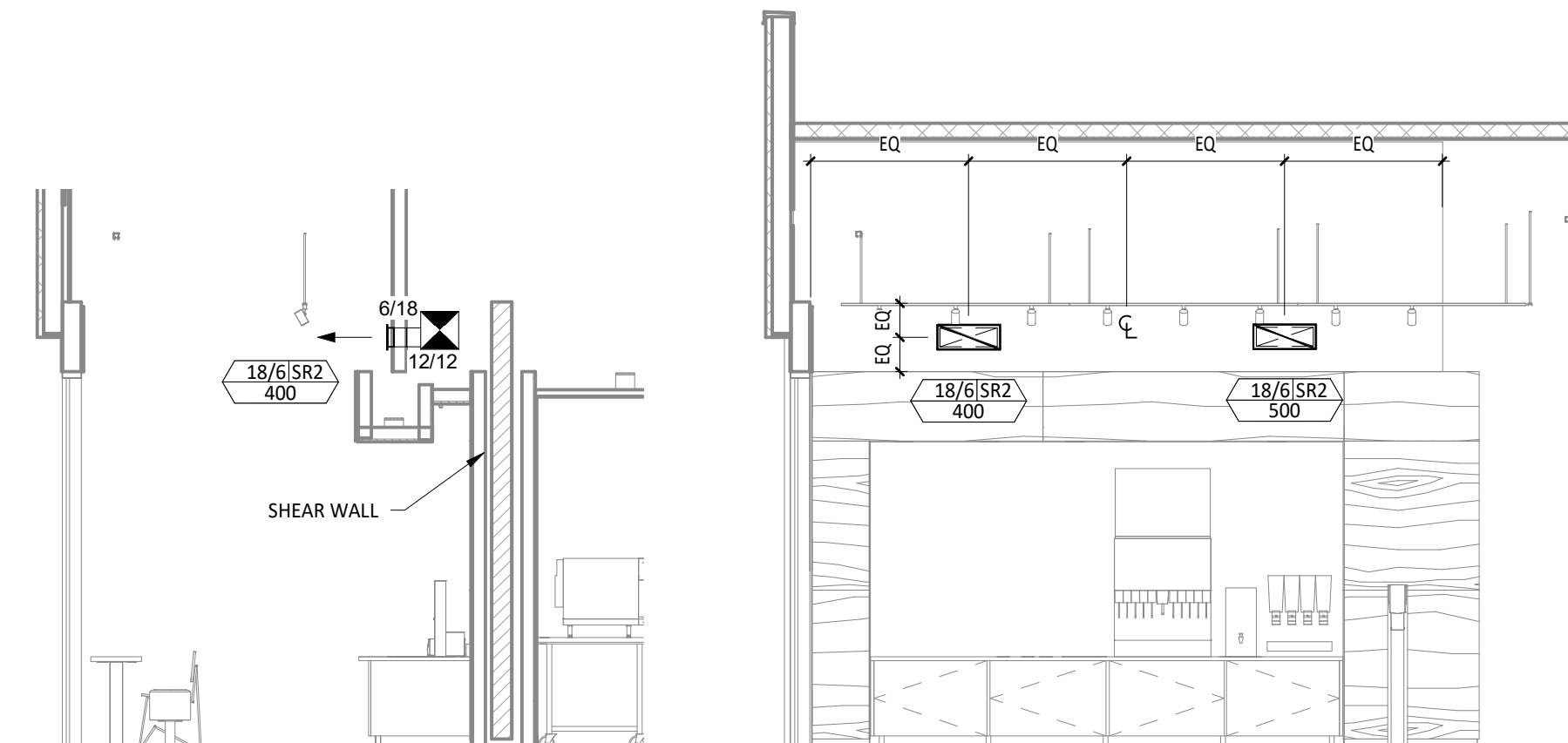
- SEE ARCHITECTURAL REFLECTED CEILING PLAN FOR CEILING MOUNTED EQUIPMENT LOCATION. TYPICAL.
- PAINT DUCTWORK VISIBLE THROUGH DINING ROOM SUPPLY REGISTERS BLACK. TYPICAL.
- PENETRATIONS THROUGH SHEAR WALL SHALL BE LIMITED TO 10" DIAMETER (OR A GROUP OF PENETRATIONS ALL CONTAINED WITHIN 10" DIAMETER). IF LARGER PENETRATIONS OR GROUPS OF PENETRATIONS ARE REQUIRED COORDINATE WITH STRUCTURAL ENGINEER FOR APPROPRIATE BRACING. SEE STRUCTURAL DRAWINGS FOR SHEAR WALL LOCATION.
- 26/18 DUCT UP FOR TRANSITION TO RTU-1 RETURN CONNECTION IN ROOF CURB. RTU-1 SHALL HAVE AN INTEGRAL SMOKE DETECTOR MOUNTED IN THE RETURN AIR STREAM. INTERLOCK SMOKE DETECTOR TO RTU-1 OPERATION.
- 26/18 DUCT UP FOR TRANSITION TO RTU-2 RETURN CONNECTION IN ROOF CURB. RTU-2 SHALL HAVE AN INTEGRAL SMOKE DETECTOR MOUNTED IN THE RETURN AIR STREAM. INTERLOCK SMOKE DETECTOR TO RTU-2 OPERATION.
- 26/18 DUCT UP FROM BUILDING SUPPLY THROUGH ROOF. TRANSITION TO RTU-1 SUPPLY CONNECTION IN ROOF CURB.
- 30/16 DUCT UP FROM BUILDING SUPPLY TO RTU-2 SUPPLY CONNECTION. TRANSITION IN ROOF CURB.
- PROVIDE THERMOSTAT ON WALL. PROVIDE CONTROL WIRING AND CONDUIT FROM THERMOSTAT TO RESPECTIVE ELECTRIC DUCT HEATER.
- 16/16 DUCT UP FROM HOOD THROUGH ROOF TO EF-1 COMPLIANT WITH NFPA 96. PROVIDE RADIUS ELBOWS WITH AN INSIDE RADIUS OF 0.5W AT ELBOWS IN GREASE DUCT.
- 8/6 DUCT UP THROUGH ROOF TO EF-2.
- 28/6 DUCT DOWN TO MAKEUP AIR PSP DUCT CONNECTION. TRANSITION TO SUPPLY PLENUM OPENING SIZE. TYPICAL FOR 3.
- 8" DIA. DUCT DOWN TO AC PSP DUCT CONNECTION. TRANSITION TO SUPPLY PLENUM OPENING SIZE. TYPICAL. CAP UNUSED DUCT CONNECTIONS.
- INSTALL GRIDPOINT THERMOSTATS FURNISHED BY TEMS FOR RTU-1 AND RTU-2 AT THIS LOCATION AT 48" AFF. COORDINATE WITH ELECTRICAL SWITCHING IN THIS AREA. PROVIDE WIRING AS SHOWN IN DETAIL 8/E710.
- INSTALL GRIDPOINT ZONE SENSOR MODULE FURNISHED BY TEMS FOR RTU-1 AT THIS LOCATION 72" AFF DIRECTLY TO WALL (NO JUNCTION BOX). COORDINATE LOCATION WITH EQUIPMENT. PROVIDE WIRING AS SHOWN IN DETAIL 8/E710.
- INSTALL GRIDPOINT ZONE SENSOR MODULE FURNISHED BY TEMS FOR RTU-2 AT THIS LOCATION 66" AFF DIRECTLY TO WALL (NO JUNCTION BOX). COORDINATE LOCATION WITH EQUIPMENT. PROVIDE WIRING AS SHOWN IN DETAIL 8/E710.
- INSTALL GRIDPOINT SUPPLY PROBE FURNISHED BY TEMS FOR RTU-1 IN THE SUPPLY DUCTWORK UPSTREAM FROM THE FIRST BRANCH CONNECTION. PROVIDE WIRING AS SHOWN IN DETAIL 8/E710.
- INSTALL GRIDPOINT SUPPLY PROBE FURNISHED BY TEMS FOR RTU-2 IN THE SUPPLY DUCTWORK UPSTREAM FROM THE FIRST BRANCH CONNECTION. PROVIDE WIRING AS SHOWN IN DETAIL 8/E710.
- INSTALL REMOTE TEMPERATURE SENSOR FOR HOOD HD-1 AT THIS LOCATION 72" AFF. COORDINATE LOCATION WITH EQUIPMENT. PROVIDE (2) #18 G. THERMISTOR CABLE FROM TEMPERATURE SENSOR TO HOOD CONTROL PANEL.
- INSTALL KITCHEN HOOD, HD-1. SUPPORT HOOD PER MANUFACTURER'S INSTALLATION INSTRUCTIONS AND AS DETAILED IN THE ARCHITECTURAL AND STRUCTURAL DRAWINGS. INSTALL HOOD ACCORDING TO THE REQUIREMENTS OF ITS LISTING, IN COMPLIANCE WITH NFPA 96, THE BUILDING CODE, AND AUTHORITIES HAVING JURISDICTION. HOOD SHALL HAVE AN INTEGRAL DUCT COLLAR TEMPERATURE SENSOR TO AUTOMATICALLY ENERGIZE THE EXHAUST AND MAKEUP AIR FANS IF COOKING TEMPERATURES ARE DETECTED. EXHAUST DUCT SYSTEM TO BE WELDED OR FACTORY-MANUFACTURED WATER AND AIR TIGHT. INSTALL CLEANOUTS PER CODE AND AS SHOWN. INSTALL HOOD PER DETAILS 2, 4, AND 9/M700. CHIPOTLE WILL PROVIDE AN INDEPENDENT TESTING AGENCY FOR TESTING THE INTEGRITY OF THE GREASE DUCT SYSTEM.

HVAC PLAN NOTES

- INSTALL REMOTE CONDENSING UNIT FOR WALK-IN COOLER ON ROOF AS DETAILED IN THE ARCHITECTURAL AND STRUCTURAL DRAWINGS. INSTALL REFRIGERANT LINE SET, THERMOSTATIC EXPANSION VALVE, SOLENOID VALVE, TEMPERATURE CONTROL, SIGHT GLASS, FILTER DRIER, PRESSURE CONTROL, LOW AMBIENT CONTROLS, AND WEATHERPROOF HOUSING. TRAP AND SLOPE REFRIGERANT LINES PER MANUFACTURER'S RECOMMENDATIONS. INSTALLATION SHALL COMPLY WITH ASHRAE/ANSI STANDARD 15. INSTALL THE REFRIGERANT LINE SET UNDER THE ROOF DECK TO WITHIN 3' OF THE CONDENSING UNIT. CUT 2-1/2" HOLE IN WALK-IN COOLER ROOF FOR REFRIGERANT LINE SET AND SEAL PER THE COOLER MANUFACTURER'S INSTALLATION INSTRUCTIONS AFTER LINE SET IS INSTALLED.
- INSTALL REMOTE CONDENSER FOR ICE MACHINE ON ROOF AS DETAILED IN THE ARCHITECTURAL AND STRUCTURAL DRAWINGS. INSTALL REFRIGERANT LINE SET, THERMOSTATIC EXPANSION VALVE, SOLENOID VALVE, TEMPERATURE CONTROL, SIGHT GLASS, FILTER DRIER, PRESSURE CONTROL, LOW AMBIENT CONTROLS, AND WEATHERPROOF HOUSING. TRAP AND SLOPE REFRIGERANT LINES PER MANUFACTURER'S RECOMMENDATIONS. SEAL PIPING PENETRATIONS THROUGH ROOF. INSTALLATION SHALL COMPLY WITH ASHRAE/ANSI STANDARD 15. INSTALL THE REFRIGERANT LINE SET UNDER THE ROOF DECK TO WITHIN 3' OF THE REMOTE CONDENSER. IF REFRIGERANT PIPING TO ICE MAKER IS EXPOSED TO PUBLIC VIEW CONCEAL WITHIN A STAINLESS STEEL SHROUD AS SHOWN IN THE ARCHITECTURAL DRAWINGS.
- INSTALL ROOFTOP EQUIPMENT PER MANUFACTURER'S INSTALLATION INSTRUCTIONS AND AS DETAILED IN THE ARCHITECTURAL AND STRUCTURAL DRAWINGS.
- INSTALL EXHAUST FAN EF-1 PER DETAIL 5/M700 AND AS DETAILED IN THE ARCHITECTURAL AND STRUCTURAL DRAWINGS. INSTALL GREASE VIROGUARD SYSTEM FURNISHED BY CHIPOTLE ON EXHAUST FAN, EF-1.
- PROVIDE SUPPLY DIFFUSER CONNECTION TO SUPPLY SYSTEM PER DETAIL 1/M700. TYPICAL.
- PROVIDE AUDIO/VISUAL REMOTE SMOKE DETECTOR ANNUNCIATOR WITH REMOTE KEY OPERATED RESET. WIRE A UNIT BACK TO EACH SMOKE DETECTOR. MOUNT UNIT 60" AFF. TYPICAL.
- INSTALL REME HALO AIR PURIFIER FURNISHED BY TVU IN RTU PER DETAIL 6/M700. SEE ELECTRICAL DRAWINGS FOR POWER CONNECTION INFORMATION. INSTALL UV WARNING STICKERS ON FACE OF ENCLOSURE PER DETAIL AND ON ANY RTU ACCESS DOOR(S) THROUGH WHICH THE REME HALO WOULD BE VISIBLE IF OPENED.
- MAINTAIN 10" CLEARANCE BETWEEN WATER HEATER FLUE TERMINATION AND OUTSIDE AIR INTAKES. MAINTAIN 10" CLEARANCE BETWEEN WATER HEATER COMBUSTION AIR INTAKE AND EXHAUST FAN EF-1 DISCHARGE. SEE PLUMBING DRAWINGS FOR MORE INFORMATION ON WATER HEATER FLUE AND COMBUSTION AIR TERMINATIONS.
- ADJUST SUPPLY REGISTERS SO THAT SUPPLY AIR HITS WALL ON OPPOSITE SIDE OF ROOM AT APPROXIMATELY 7' AFF WITH NO DRAFTS FELT IN THE DINING ROOM.
- INSTALL ELECTRIC DUCT HEATER IN VERTICAL SUPPLY AIR MAIN DUCT RISER. FOLLOW ALL MANUFACTURER RECOMMENDATIONS FOR INSTALLATION.

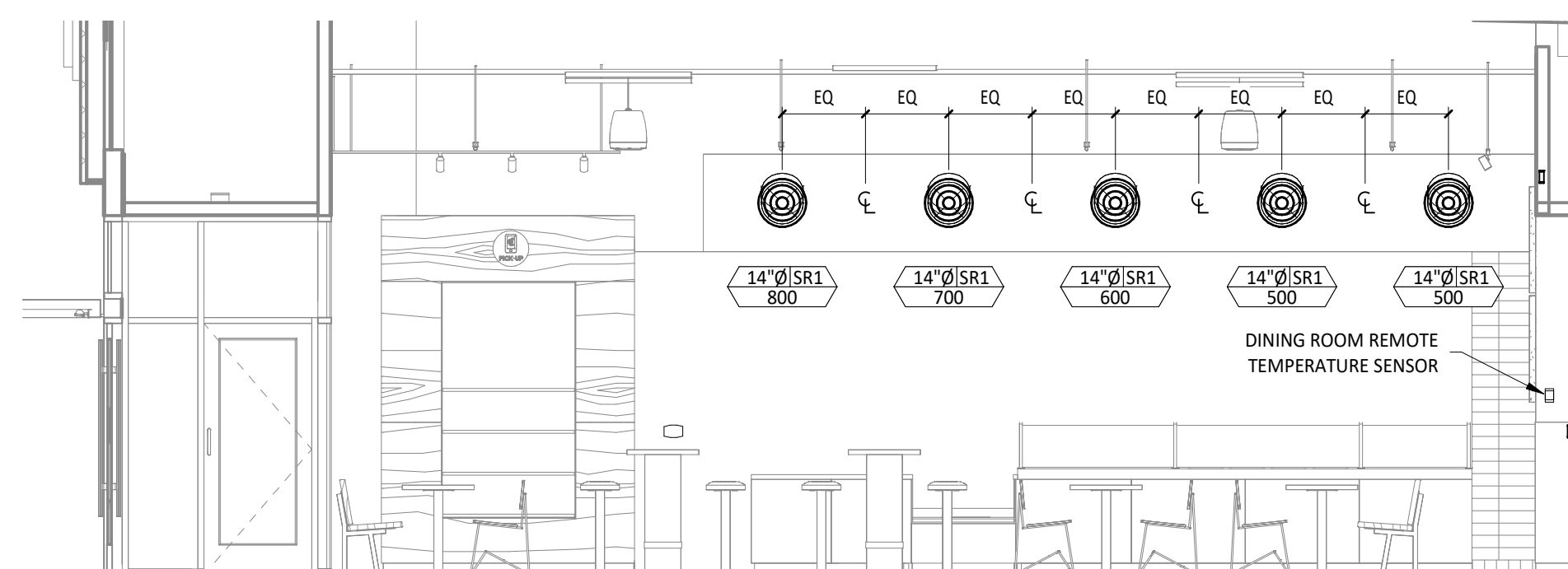


6 M100 HVAC DINING ROOM RETURN SECTION
1/4" = 1'-0"

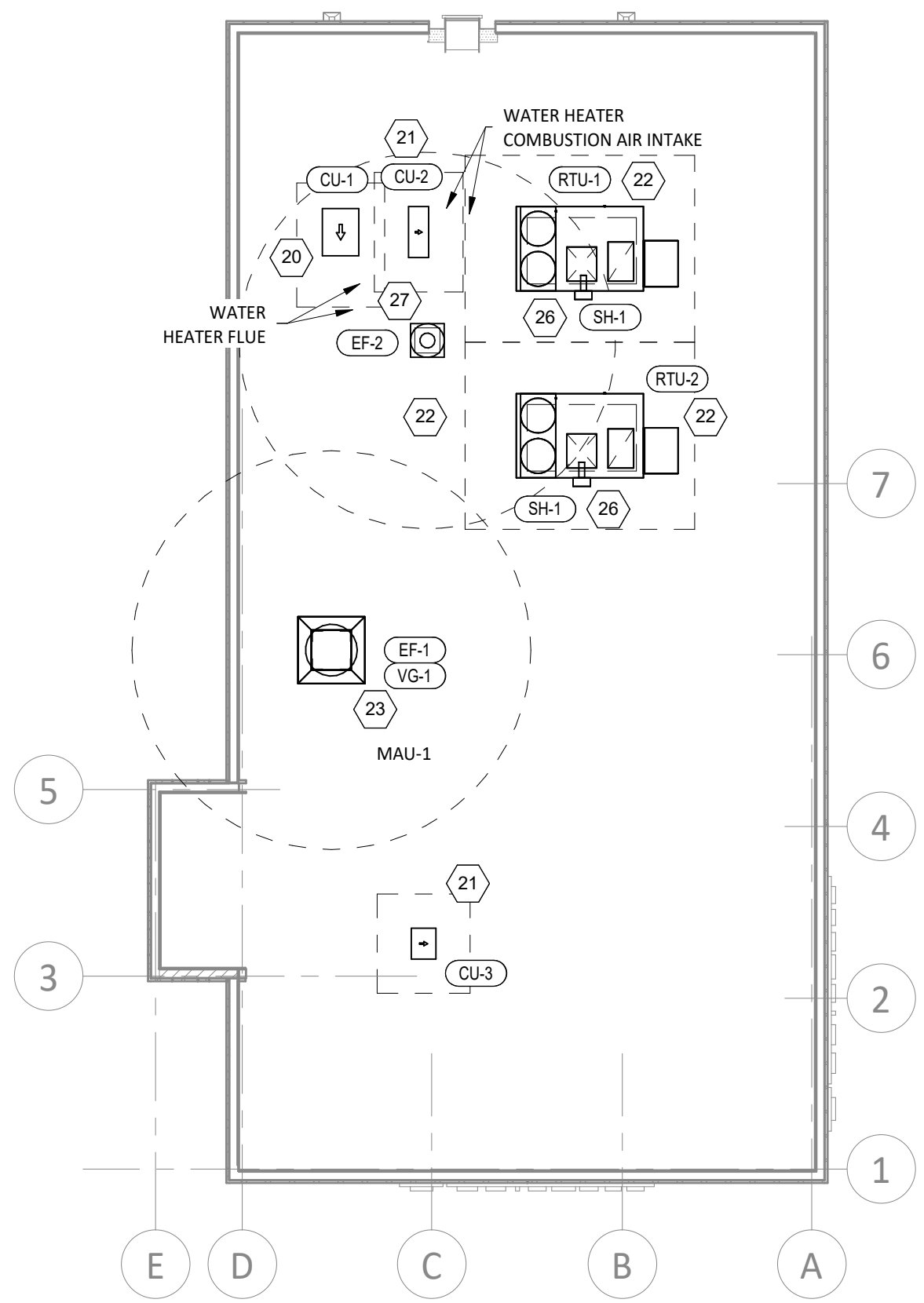


5 M100 HVAC DINING ROOM SECTION
1/4" = 1'-0"

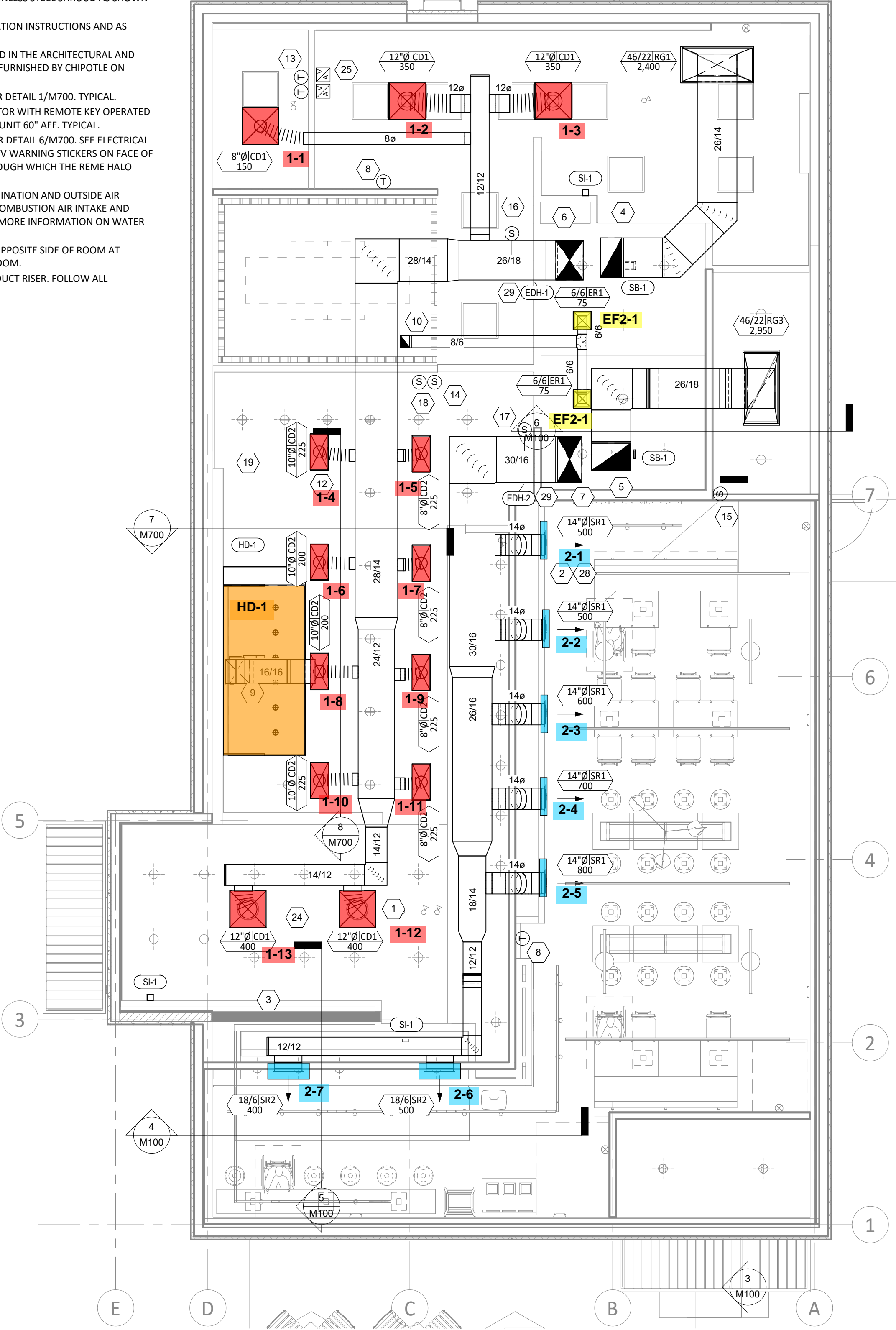
4 M100 HVAC DINING ROOM SECTION
1/4" = 1'-0"



3 M100 HVAC DINING ROOM SECTION
1/4" = 1'-0"



2 M100 HVAC ROOF PLAN
1/8" = 1'-0"



1 M100 HVAC FLOOR PLAN
1/4" = 1'-0"

Consultant:
GF
www.greenbergfarrow.com
1230 Peachtree Street, NE
Suite 2900 Atlanta, GA 30309
t: 404 601 4000

COPYRIGHT 2022
THIS DRAWING IS AN INSTRUMENT OF SERVICE AND AS SUCH REMAINS THE PROPERTY OF CHIPOTLE MEXICAN GRILL, INC. PERMISSION FOR USE OF THIS DOCUMENT IS LIMITED AND CAN BE EXTENDED ONLY BY WRITTEN AGREEMENT WITH CHIPOTLE MEXICAN GRILL, INC.



STORE NO.: 4829
BLOOMSBURG, PA
ROUTE 42, BLOOMSBURG,
PA 17815

REV.	DATE	DESCRIPTION
09/18/2023	LANDLORD SET	
11/06/2023	PERMIT SET	
1 02/14/2024	BID SET	

Issue Record:

Drawn: AN
Checked: MPC

Project No:
202213260

Contents:

HVAC PLAN

M100

**HOOD SHOP DRAWING PRODUCED BY
MANUFACTURER - FOR REFERENCE ONLY**

FOR QUESTIONS, CALL THE
Highwoods Group
REGION 40
PHONE: (919) 875-0420
EMAIL: reg40@captivaire.com

PATENT NUMBERS
EXHAUST HOODS ND-2/BD-2/SND-2 (CANADA) - CA PATENT 2520435 C.

HOOD INFORMATION - JOB#5971193

HOOD NO	TAG	MODEL	MANUFACTURER	LENGTH	MAX COOKING TEMP	TYPE	APPLIANCE DUTY	DESIGN CFM/FT	TOTAL EXH CFM	EXHAUST PLENUM RISER(S)				HOOD CONSTRUCTION	HOOD CONFIG			
										WIDTH	LENG	HEIGHT	DIA		CFM	VEL	SP	END TO END
1		5424 ND-2	CAPTIVEAIRE	9' 6"	600 DEG	I	HEAVY	200	1900	10'	18'	4'	1900	1520	-0.818"	430 SS WHERE EXPOSED	ALONE	ALONE

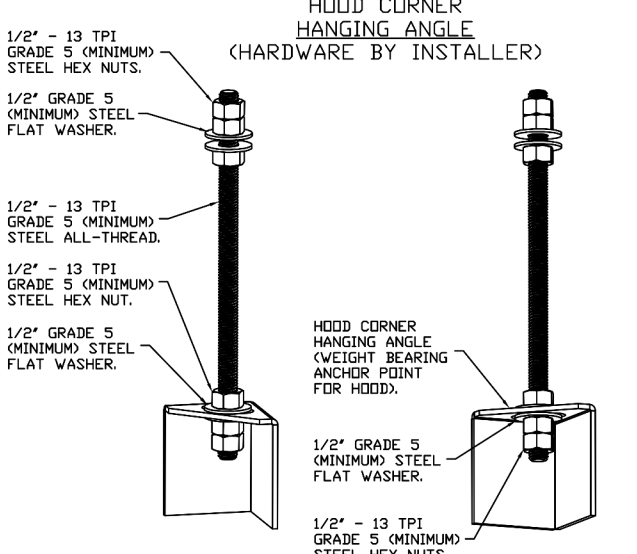
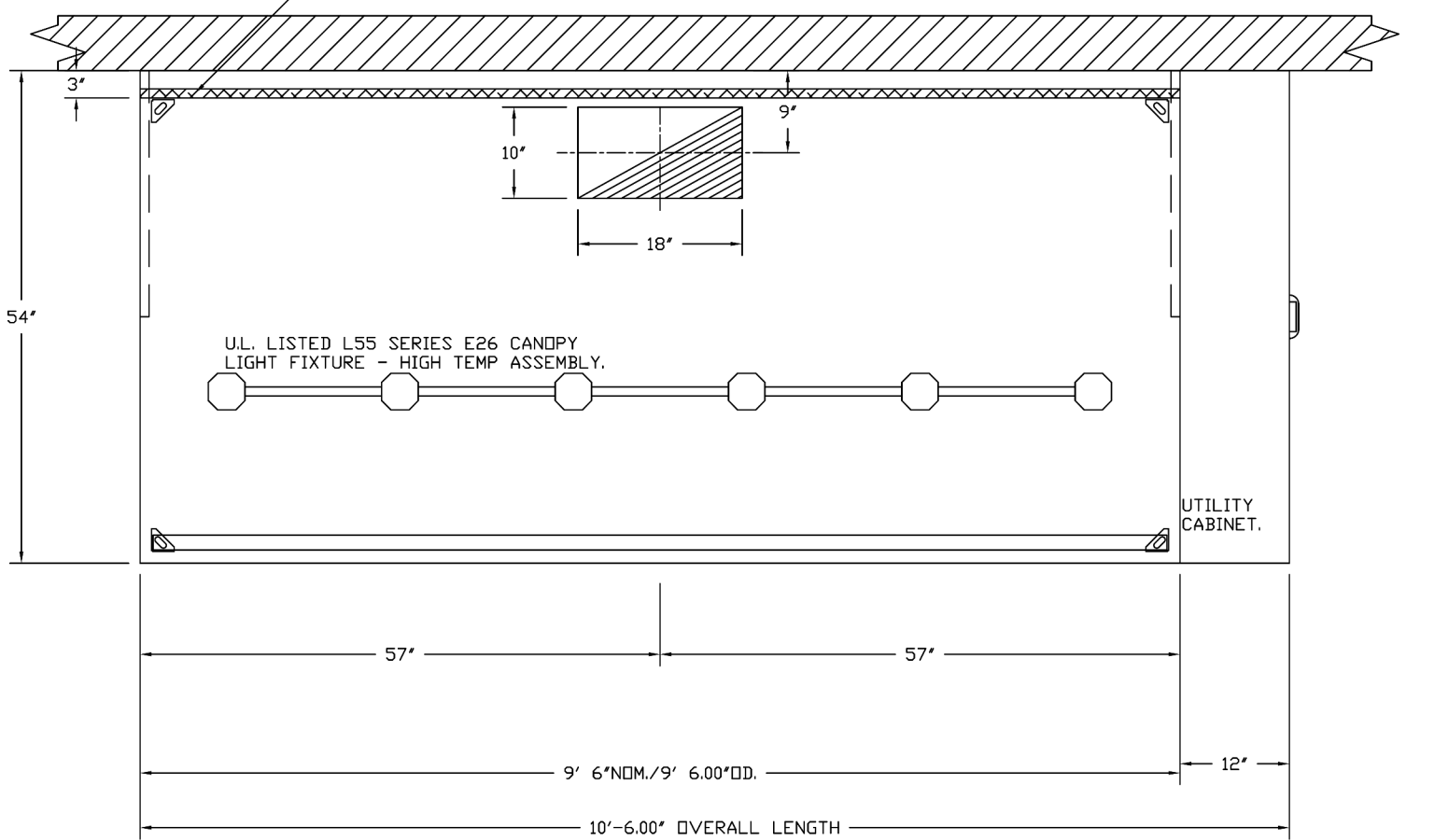
HOOD INFORMATION

HOOD NO	TAG	TYPE	FILTER(S)		EFFICIENCY @ 7 MICRONS	QTY	LIGHT(S)		WIRE GUARD	LOCATION	SIZE	UTILITY CABINET(S)		FIRE SYSTEM	HOOD HANGING WEIGHT	
			QTY	HEIGHT			LENGTH	TYPE				SIZE	MODEL #			SWITCHES
1		CAPTRATE SOLID FILTER	7	16"	16"	85% SEE FILTER SPEC	6	L55 SERIES E26	NO	RIGHT	12"x54"x24"	ANSUL R-102	3.0/3.0	SC-110110MA	1 LIGHT 1 FAN	690 LBS

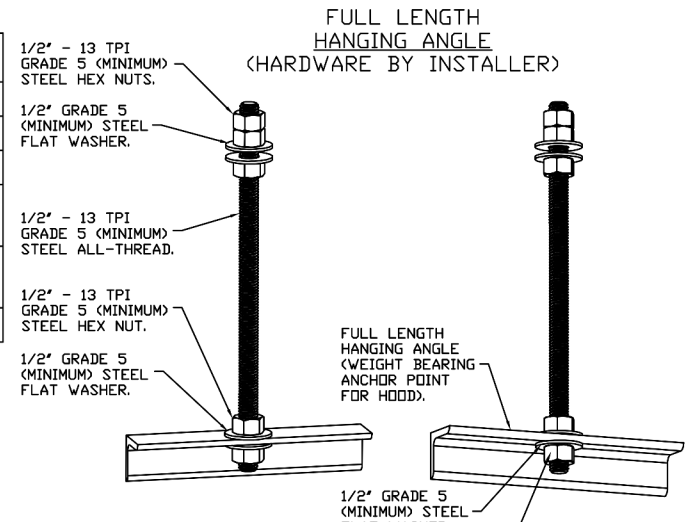
HOOD OPTIONS

HOOD NO	TAG	OPTION
1		FIELD WRAPPER 10.00" HIGH FRONT, LEFT, RIGHT. INSULATION FOR BACK OF HOOD. RISER SENSOR INSTALL 6IN PLEN. RIGHT VERTICAL END PANEL 27" TOP WIDTH, 21" BOTTOM WIDTH, 80" HIGH INSULATED 430 SS. LEFT VERTICAL END PANEL 27" TOP WIDTH, 21" BOTTOM WIDTH, 80" HIGH INSULATED 430 SS. FULL DIMENSION HANGING BRACKET - FRONT.

1" LAYER OF INSULATION FACTORY INSTALLED IN INTERNAL BACK STANDOFF. MEETS 6 INCH REQUIREMENTS FOR CLEARANCE TO COMBUSTIBLE SURFACES.



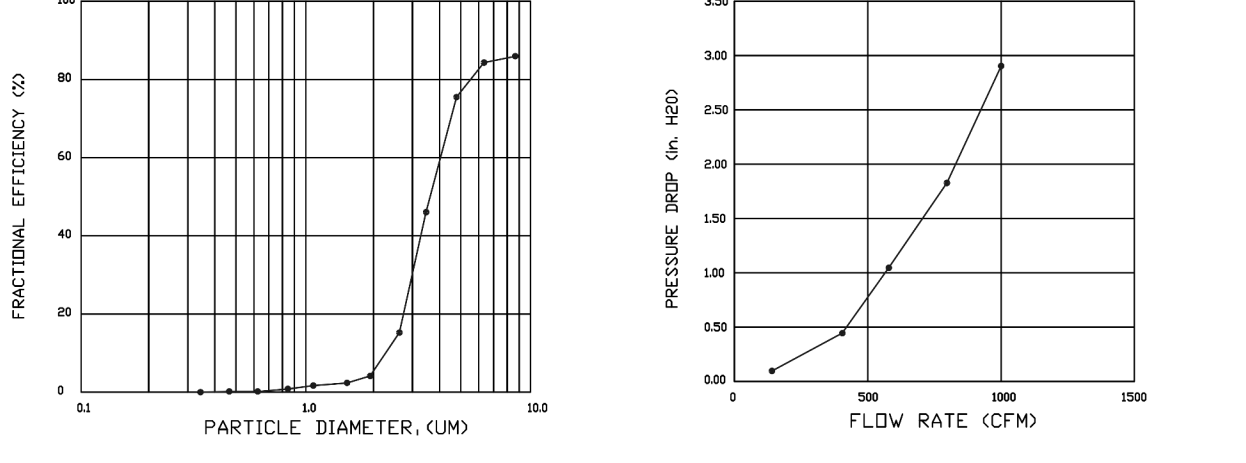
HANGING ANGLE MUST BE SUPPORTED WITH 1/2" - 13 TPI GRADE 5 (MINIMUM) ALL-THREAD, SANDWICH HANGING ANGLES AND CEILING ANCHOR POINTS WITH 1/2" GRADE 5 (MINIMUM) STEEL FLAT WASHERS AND 1/2" - 13 TPI GRADE 5 (MINIMUM) HEX NUTS AS SHOWN. MUST USE DOUBLED HEX NUT CONFIGURATION BENEATH HOOD HANGING ANGLES AND ABOVE CEILING ANCHORS. MAINTAIN 1/4" OF EXPOSED THREADS BENEATH BOTTOM HEX NUT. TORQUE ALL HEX NUTS TO 57 FT-LBS.



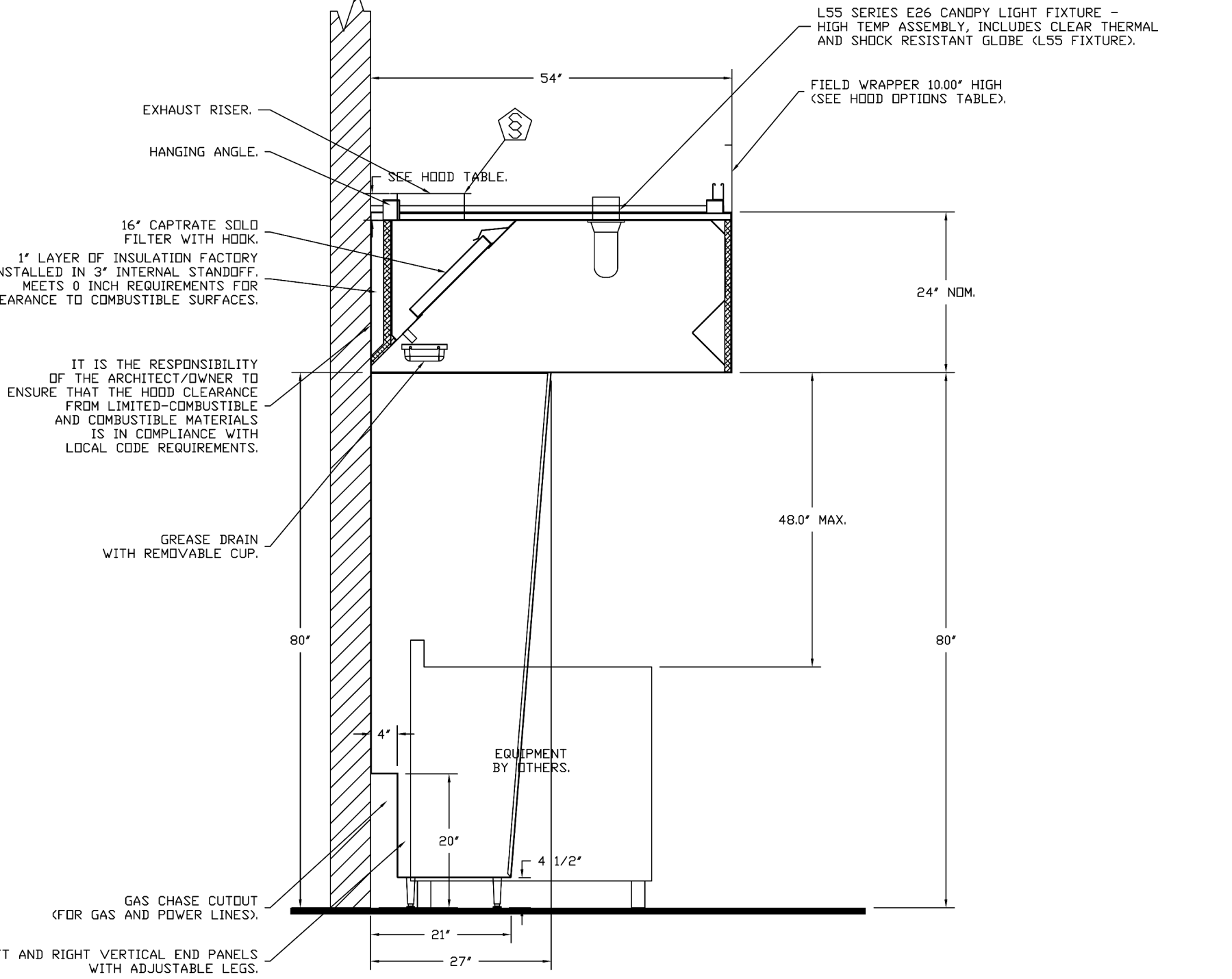
HANGING ANGLE MUST BE SUPPORTED WITH 1/2" - 13 TPI GRADE 5 (MINIMUM) ALL-THREAD, SANDWICH HANGING ANGLES AND CEILING ANCHOR POINTS WITH 1/2" GRADE 5 (MINIMUM) STEEL FLAT WASHERS AND 1/2" - 13 TPI GRADE 5 (MINIMUM) HEX NUTS AS SHOWN. MUST USE DOUBLED HEX NUT CONFIGURATION ABOVE CEILING ANCHORS. SINGLE HEX NUT BENEATH HANGING ANGLE IS ACCEPTABLE FOR FULL LENGTH HANGING ANGLES. MAINTAIN 1/4" OF EXPOSED THREADS BENEATH BOTTOM HEX NUT. TORQUE ALL HEX NUTS TO 57 FT-LBS.

SPECIFICATION: CAPTRATE® GREASE-STOP® SOLID FILTER

THE CAPTRATE GREASE-STOP SOLID FILTER IS A SINGLE-STAGE FILTER FEATURING A UNIQUE S-Baffle DESIGN IN CONJUNCTION WITH A SLOTTED REAR Baffle DESIGN, TO DELIVER EXCEPTIONAL FILTRATION EFFICIENCY.
FILTER IS STAINLESS STEEL CONSTRUCTION, AND SIZED TO FIT INTO STANDARD 2-INCH DEEP HOOD CHANNEL(S).
UNITS SHALL INCLUDE STAINLESS STEEL HANDLES AND A FASTENING DEVICE TO SECURE THE TWO COMPONENTS WHEN ASSEMBLED.
GREASE EXTRACTION EFFICIENCY PERFORMANCE SHALL REMOVE AT LEAST 75% OF GREASE PARTICLES FIVE MICRONS IN SIZE, AND 85% GREASE PARTICLES SEVEN MICRONS IN SIZE AND LARGER, WITH A CORRESPONDING PRESSURE DROP NOT TO EXCEED 1.0 INCHES OF WATER GAUGE.
THE CAPTRATE GREASE-STOP SOLID WAS TESTED TO ASTM STANDARD ASTM F2519-05. MANUFACTURER APPROVED FOR USE IN SOLID FUEL APPLICATIONS AS A SPARK ARRESTER.
EFFICIENCY VS. PARTICLE DIAMETER



CAPTRATE FILTERS ARE BUILT IN COMPLIANCE WITH:
NFPA #96,
NSF STANDARD #2,
UL STANDARD #1046,
INT. MECH. CODE (IMC),
ULC-S649.



IT IS THE RESPONSIBILITY OF THE ARCHITECT/DRAWER TO ENSURE THAT THE HOOD CLEARANCE FROM LIMITED-COMBUSTIBLE AND COMBUSTIBLE MATERIALS IS IN COMPLIANCE WITH LOCAL CODE REQUIREMENTS.

FIRE SYSTEM INFORMATION - JOB#5971193

FIRE SYSTEM NO	TAG	TYPE	SIZE	FLOW POINTS	INSTALLATION	
					SYSTEM	LOCATION ON HOOD
1		ANSUL R102	3.0/3.0	14	FIRE CABINET RIGHT	RIGHT, HOOD 1

REVISIONS

NO	DESCRIPTION	DATE

CAPTIVEAIRE

Highwoods Group
www.captiveaire.com
4641 Paragon Park Rd., Raleigh, NC 27616 PHONE: (919) 875-0420 FAX: (919) 875-0577 EMAIL: reg40@captivaire.com

GF
www.greenbergfarrow.com
1230 Peachtree Street, NE
Suite 2900 Atlanta, GA 30309
t: 404 601 4000

COPYRIGHT 2022
THIS DRAWING IS AN INSTRUMENT OF SERVICE AND AS SUCH REMAINS THE PROPERTY OF CHIPOTLE MEXICAN GRILL, INC. PERMISSION FOR USE OF THIS DOCUMENT IS LIMITED AND CAN BE EXTENDED ONLY BY WRITTEN AGREEMENT WITH CHIPOTLE MEXICAN GRILL, INC.



STORE NO.: 4829
BLOOMSBURG, PA
ROUTE 42, BLOOMSBURG,
PA 17815

Issue Record:

REV.	DATE	DESCRIPTION
1	02/14/2024	BID SET

Engineer

Drawn: AN
Checked: MPC

Project No.
202213260

Contents:
CAPTIVEAIRE SHOP DRAWINGS

M400

SHEET NO.
1

**HOOD SHOP DRAWING PRODUCED BY
MANUFACTURER - FOR REFERENCE ONLY**

EXHAUST FAN INFORMATION - JOB#5971193

FAN UNIT NO	TAG	QTY	FAN UNIT MODEL #	MANUFACTURER	CFM	ESP	RPM	MOTOR ENCL	HP	BHP	PHASE	VOLT	FLA	DISCHARGE VELOCITY	WEIGHT (LBS)	SDNES
1	EF-1	1	DUBSHFA	CAPTIVEAIRE	1900	1.200	1487	TEAD-ECM	1.000	0.5790	1	115	11.6	601 FPM	93	14.4
2	EF-2	1	DR12HFA	CAPTIVEAIRE	150	0.500	1190	TEAD-ECM	0.250	0.0730	1	115	2.9		50	5.1

FAN OPTIONS

FAN UNIT NO	TAG	QTY	DESCRIPTION
1	EF-1	1	GREASE BOX
		1	REMOVE HINGE KIT LABEL FROM THE FAN BASE
		1	ECM WIRING PACKAGE - PWM SIGNAL FROM ECPM03 PREWIRE (TELCO MOTOR), CCW ROTATION
2	EF-2	1	2 YEAR PARTS WARRANTY
		1	ECM WIRING PACKAGE - EXHAUST - MANUAL DR 0-10VDC REFERENCE SPEED CONTROL -MSC- (TELCO), CCW ROTATION
		1	12-BDD DAMPER
		1	2 YEAR PARTS WARRANTY

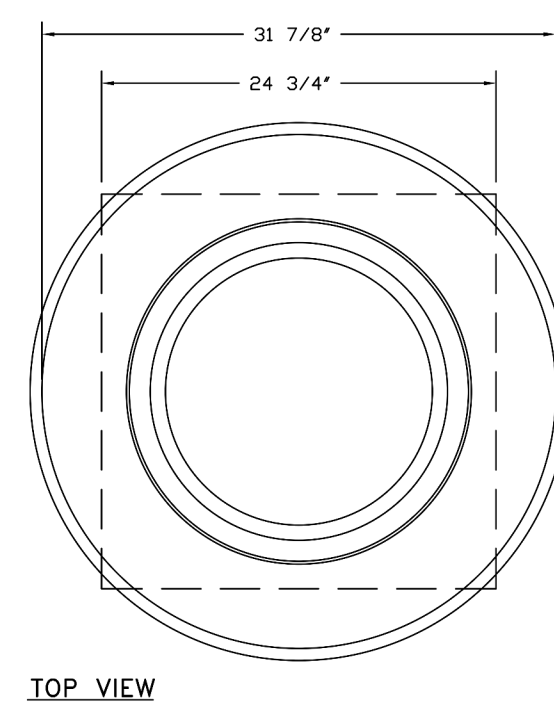
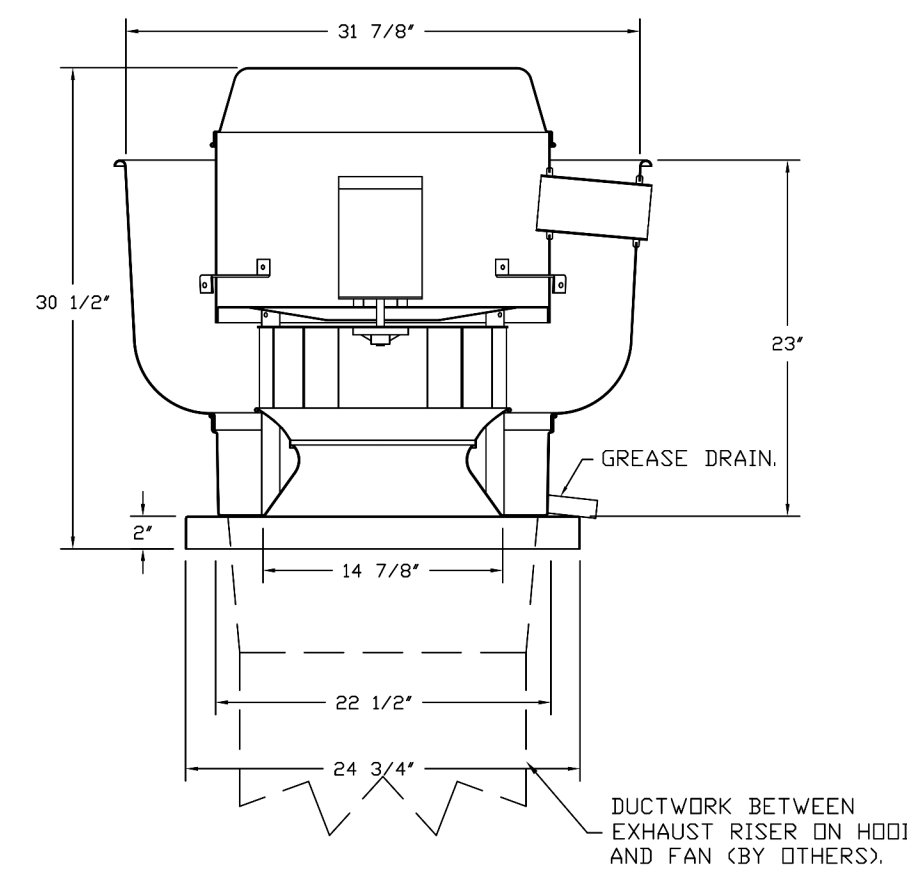
FAN ACCESSORIES

FAN UNIT NO	TAG	EXHAUST				SUPPLY		
		GREASE CUP	GRAVITY DAMPER	WALL MOUNT	SIDE DISCHARGE	GRAVITY DAMPER	MOTORIZED DAMPER	WALL MOUNT
1	EF-1	YES						
2	EF-2		YES					

CURB ASSEMBLIES

NO	IN FAN	TAG	WEIGHT	ITEM	SIZE
1	# 1	EF-1	32 LBS	CURB	23.000"W X 23.000"L X 20.000"H ALONG LENGTH, RIGHT VENTED.
2	# 2	EF-2	31 LBS	CURB	17.500"W X 17.500"L X 26.000"H ALONG LENGTH, RIGHT.

FAN #1 DUBSHFA - EXHAUST FAN (EF-1)



TOP VIEW

FEATURES:

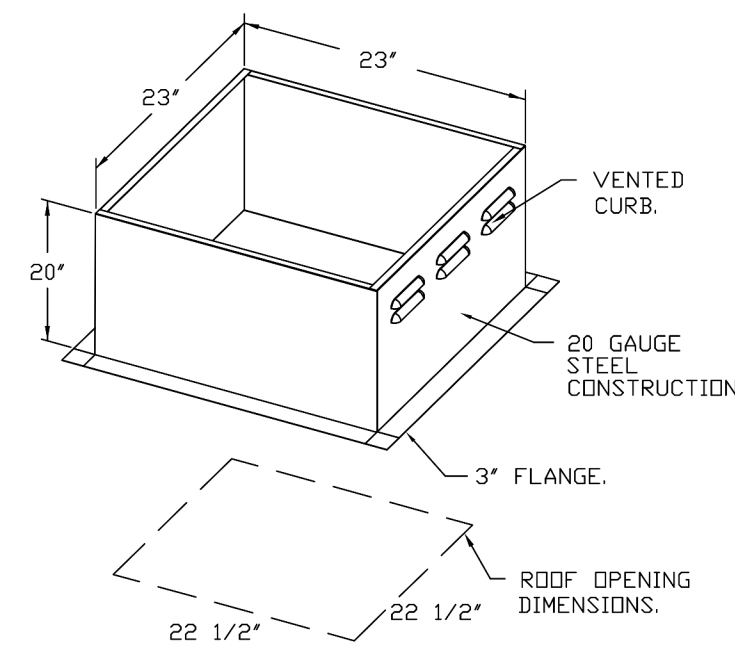
- DIRECT DRIVE CONSTRUCTION (NO BELTS/PULLEYS).
- ROOF MOUNTED FANS.
- RESTAURANT MODEL.
- UL705 AND UL762 AND ULC-S645
- VARIABLE SPEED CONTROL.
- INTERNAL WIRING.
- THERMAL OVERLOAD PROTECTION (SINGLE PHASE).
- HIGH HEAT OPERATION 300°F (149°C).
- GREASE CLASSIFICATION TESTING.
- NEMA 3R SAFETY DISCONNECT SWITCH.

NORMAL TEMPERATURE TEST
EXHAUST FAN MUST OPERATE CONTINUOUSLY WHILE EXHAUSTING AIR AT 300°F (149°C) UNTIL ALL FAN PARTS HAVE REACHED THERMAL EQUILIBRIUM, AND WITHOUT ANY DETERIORATING EFFECTS TO THE FAN WHICH WOULD CAUSE UNSAFE OPERATION.

ABNORMAL FLARE-UP TEST
EXHAUST FAN MUST OPERATE CONTINUOUSLY WHILE EXHAUSTING BURNING GREASE VAPORS AT 600°F (316°C) FOR A PERIOD OF 15 MINUTES WITHOUT THE FAN BECOMING DAMAGED TO ANY EXTENT THAT COULD CAUSE AN UNSAFE CONDITION.

OPTIONS

- GREASE BOX.
- REMOVE HINGE KIT LABEL FROM THE FAN BASE.
- ECM WIRING PACKAGE - PWM SIGNAL FROM COMED PREWIRE (TELCO MOTOR), CCW ROTATION.
- 2 YEAR PARTS WARRANTY.



REVISIONS	
DESCRIPTION	DATE

CAPTIVEAIRE

Highwoods Group
4614 Paragon Peak Rd., Raleigh, NC 27616 PHONE: (919) 975-5420 FAX: (919) 975-6577 EMAIL: rgh40@captiveaire.com

DATE: 4/25/2023
DWG.#: 5971193
DRAWN BY: JMB-40
SCALE: 3/4" = 1'-0"
MASTER DRAWING

SHEET NO.
2

GF
www.greenbergfarrow.com
1230 Peachtree Street, NE
Suite 2900 Atlanta, GA 30309
t: 404 601 4000

COPYRIGHT 2022
THIS DRAWING IS AN INSTRUMENT OF SERVICE AND AS SUCH REMAINS THE PROPERTY OF CHIPOTLE MEXICAN GRILL, INC. PERMISSION FOR USE OF THIS DOCUMENT IS LIMITED AND CAN BE EXTENDED ONLY BY WRITTEN AGREEMENT WITH CHIPOTLE MEXICAN GRILL, INC.

CHIPOTLE MEXICAN GRILL, INC.
PO BOX 182566
COLUMBUS, OH 43218-2566
TELEPHONE: (614) 318-2482
INTERNET: WWW.CHIPOTLE.COM

STORE NO.: 4829
BLOOMSBURG, PA
ROUTE 42, BLOOMSBURG,
PA 17815

REV.	DATE	DESCRIPTION
1	02/14/2024	BID SET

Drawn: AN
Checked: MPC

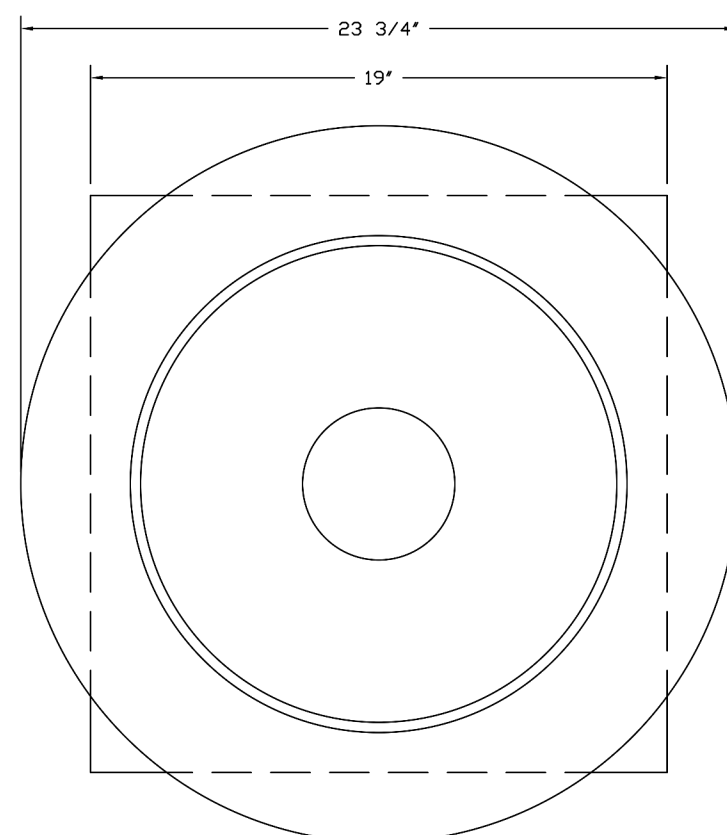
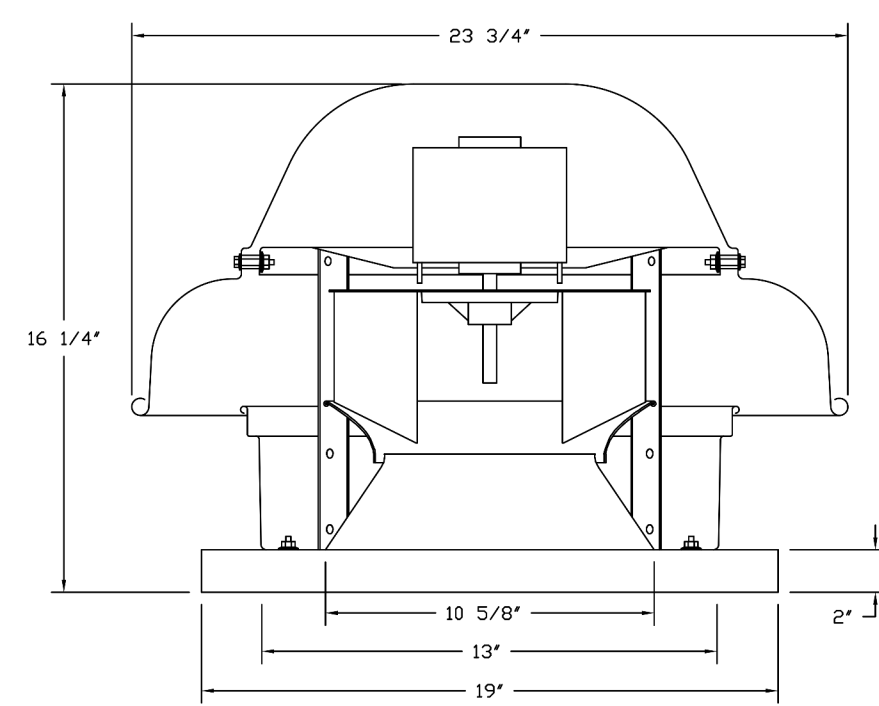
Project No.
202213260

Contents:
CAPTIVEAIRE SHOP DRAWINGS

M401

**HOOD SHOP DRAWING PRODUCED BY
MANUFACTURER - FOR REFERENCE ONLY**

FAN #2 DR12HEA - EXHAUST FAN (EF-2)



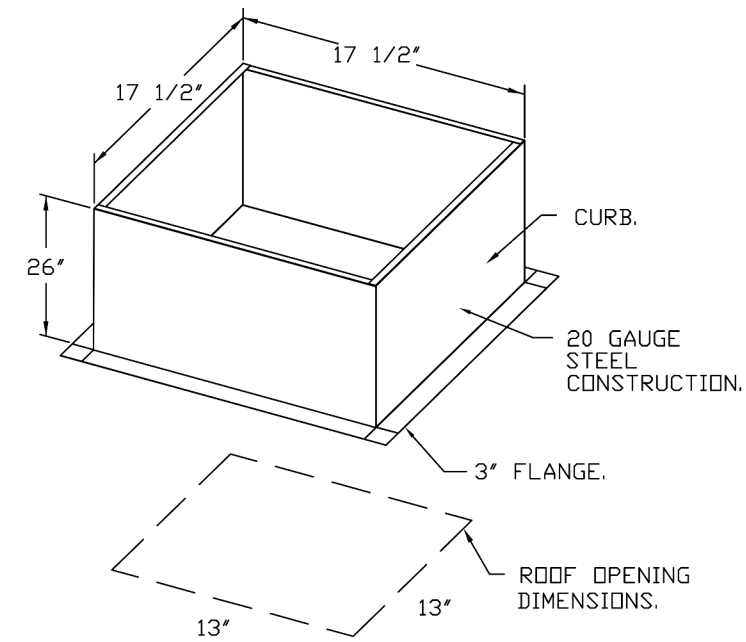
TOP VIEW

FEATURES:

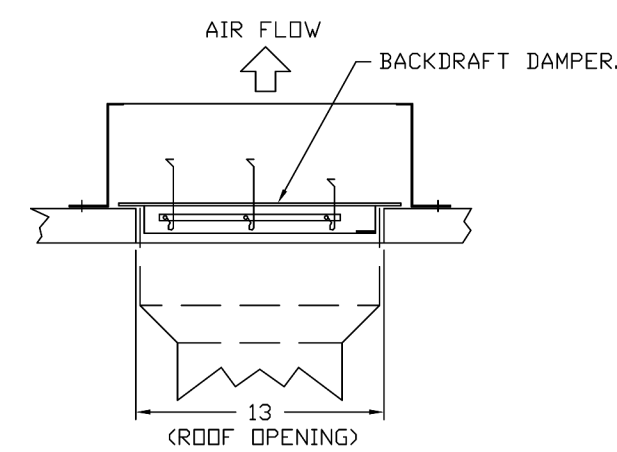
- DIRECT DRIVE CONSTRUCTION (NO BELTS/PULLEYS).
- ROOF MOUNTED FANS.
- UL705.
- SAFETY DISCONNECT.
- STANDARD BIRD SCREEN.
- SPEED CONTROL.
- THERMAL OVERLOAD PROTECTION (SINGLE PHASE).

OPTIONS:

- ECM WIRING PACKAGE - EXHAUST - MANUAL OR 0-10VDC REFERENCE SPEED CONTROL -MSC- (TELCD, CCW ROTATION).
- 1 1/2" BIRD DAMPER.
- 2 YEAR PARTS WARRANTY.



BACKDRAFT DAMPER INSTALLATION



REVISIONS	
DESCRIPTION	DATE

CAPTIVEAIRE
 Highwoods Group
 4641 Paragon Park Rd., Raleigh, NC, 27616 PHONE: (919) 875-0420 FAX: (919) 875-0577 EMAIL: reg@captivaire.com
 www.captivaire.com

DATE: 4/25/2023
DWG.#: 5971193
DRAWN BY: JMB-40
SCALE: 3/4" = 1'-0"
MASTER DRAWING
SHEET NO. 3



COPYRIGHT 2022
 THIS DRAWING IS AN INSTRUMENT OF SERVICE AND AS SUCH REMAINS THE PROPERTY OF CHIPOTLE MEXICAN GRILL, INC. PERMISSION FOR USE OF THIS DOCUMENT IS LIMITED AND CAN BE EXTENDED ONLY BY WRITTEN AGREEMENT WITH CHIPOTLE MEXICAN GRILL, INC.



STORE NO.: 4829
 BLOOMSBURG, PA
 ROUTE 42, BLOOMSBURG,
 PA 17815

REV.	DATE	DESCRIPTION
1	02/14/2024	BID SET

Engineer

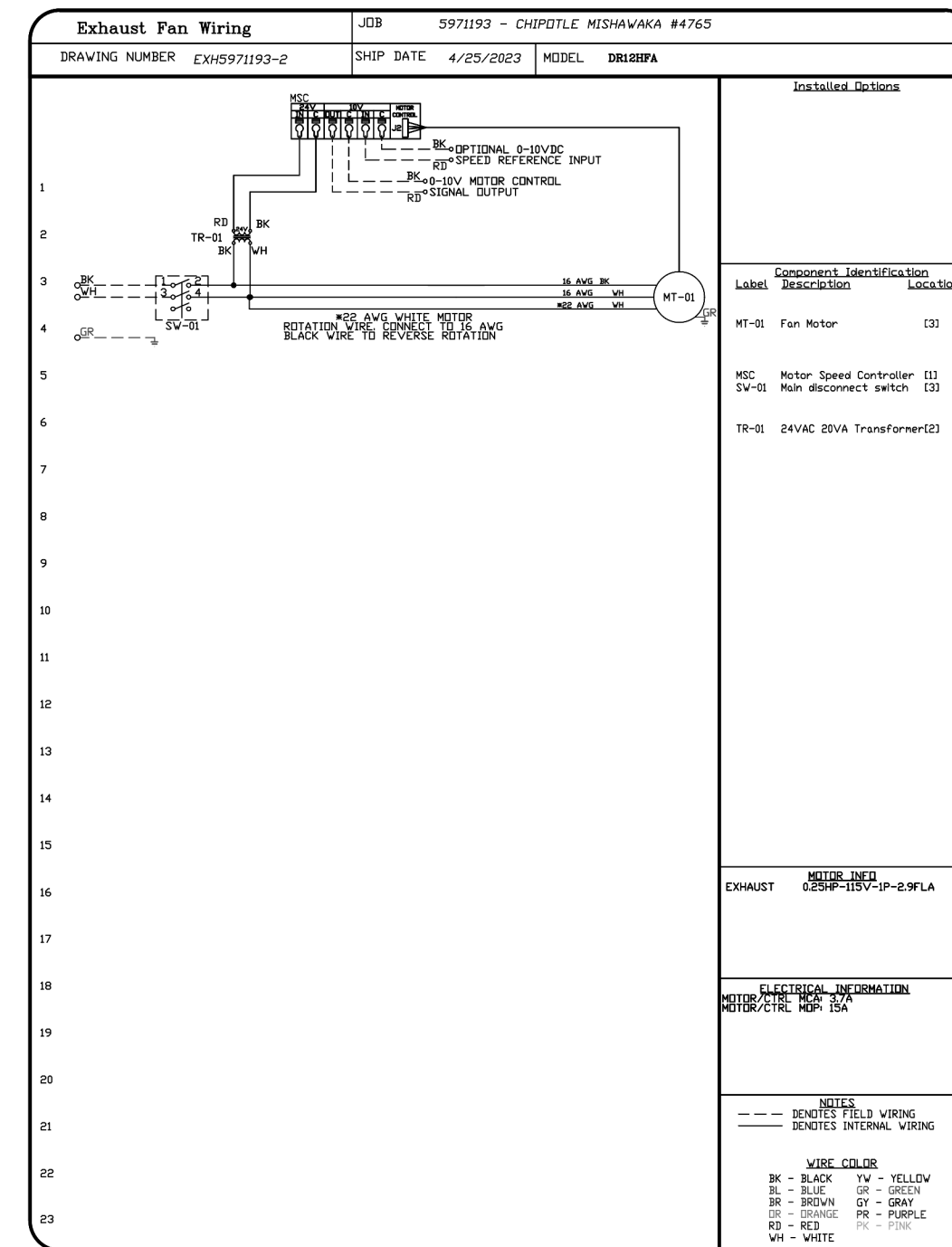
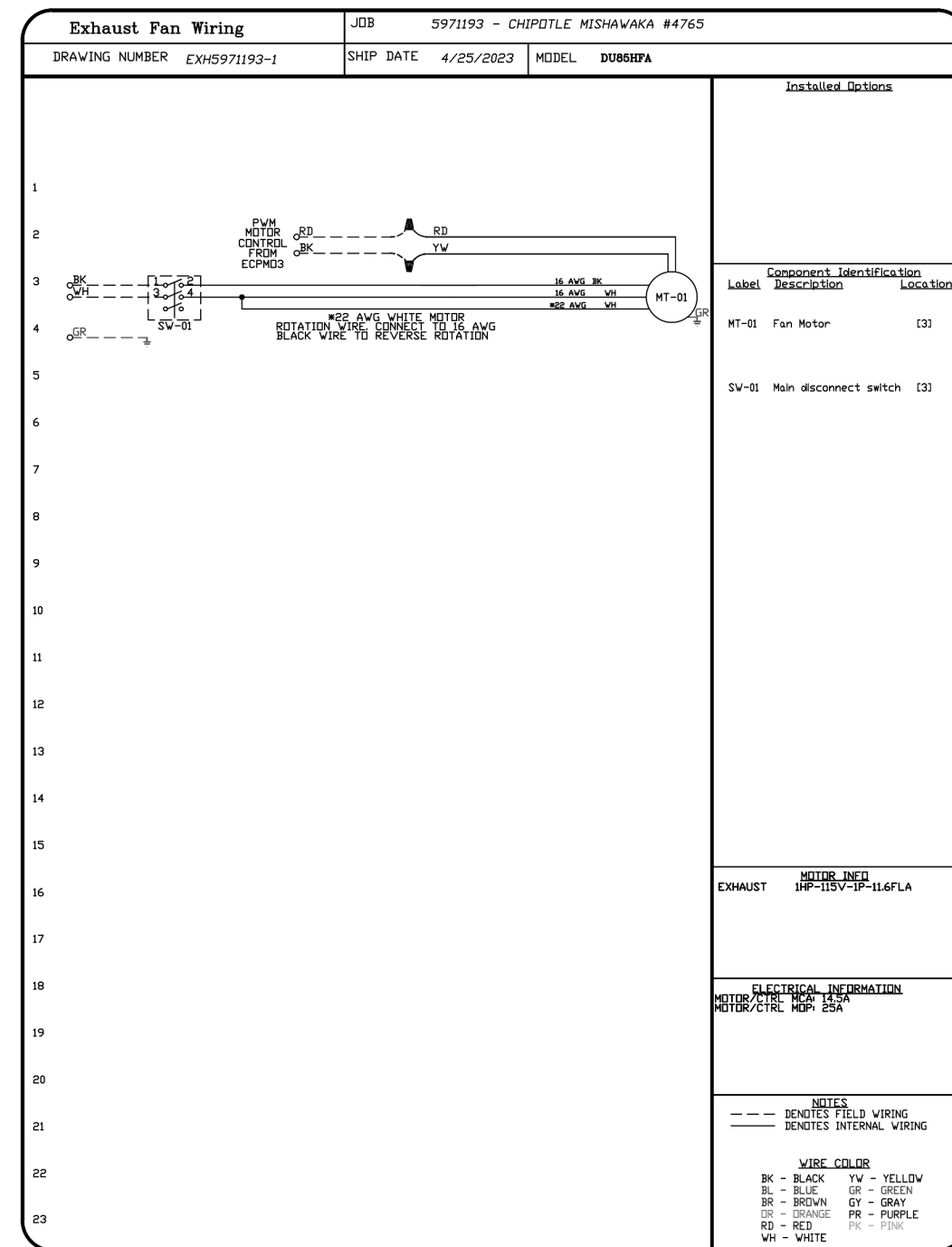
Drawn: AN
 Checked: MPC

Project No.
 202213260

Contents:
 CAPTIVEAIRE SHOP
 DRAWINGS

M402

**HOOD SHOP DRAWING PRODUCED BY
MANUFACTURER - FOR REFERENCE ONLY**



REVISIONS	
DESCRIPTION	DATE

CAPTIVE
Highwoods Group
www.captiveair.com
www.highwoodsgroup.com
4641 Paragon Park Rd., Raleigh, NC 27616 PHONE: (919) 875-0420 FAX: (919) 875-0577 EMAIL: reg40@captiveair.com

DATE: 4/25/2023
DWG.#: 5971193
DRAWN BY: JMB-40
SCALE: 3/4" = 1'-0"
MASTER DRAWING

SHEET NO.
4

Consultant:
GF
www.greenbergfarrow.com
1230 Peachtree Street, NE
Suite 2900 Atlanta, GA 30309
t: 404 601 4000

COPYRIGHT 2022
THIS DRAWING IS AN INSTRUMENT OF SERVICE
AND AS SUCH REMAINS THE PROPERTY OF
CHIPOTLE MEXICAN GRILL, INC. PERMISSION FOR
USE OF THIS DOCUMENT IS LIMITED AND CAN BE
EXTENDED ONLY BY WRITTEN AGREEMENT WITH
CHIPOTLE MEXICAN GRILL, INC.



STORE NO.: 4829
BLOOMSBURG, PA
ROUTE 42, BLOOMSBURG,
PA 17815

REV.	DATE	DESCRIPTION
1	02/14/2024	BID SET

Engineer _____

Drawn: AN
Checked: MPC

Project No.
202213260

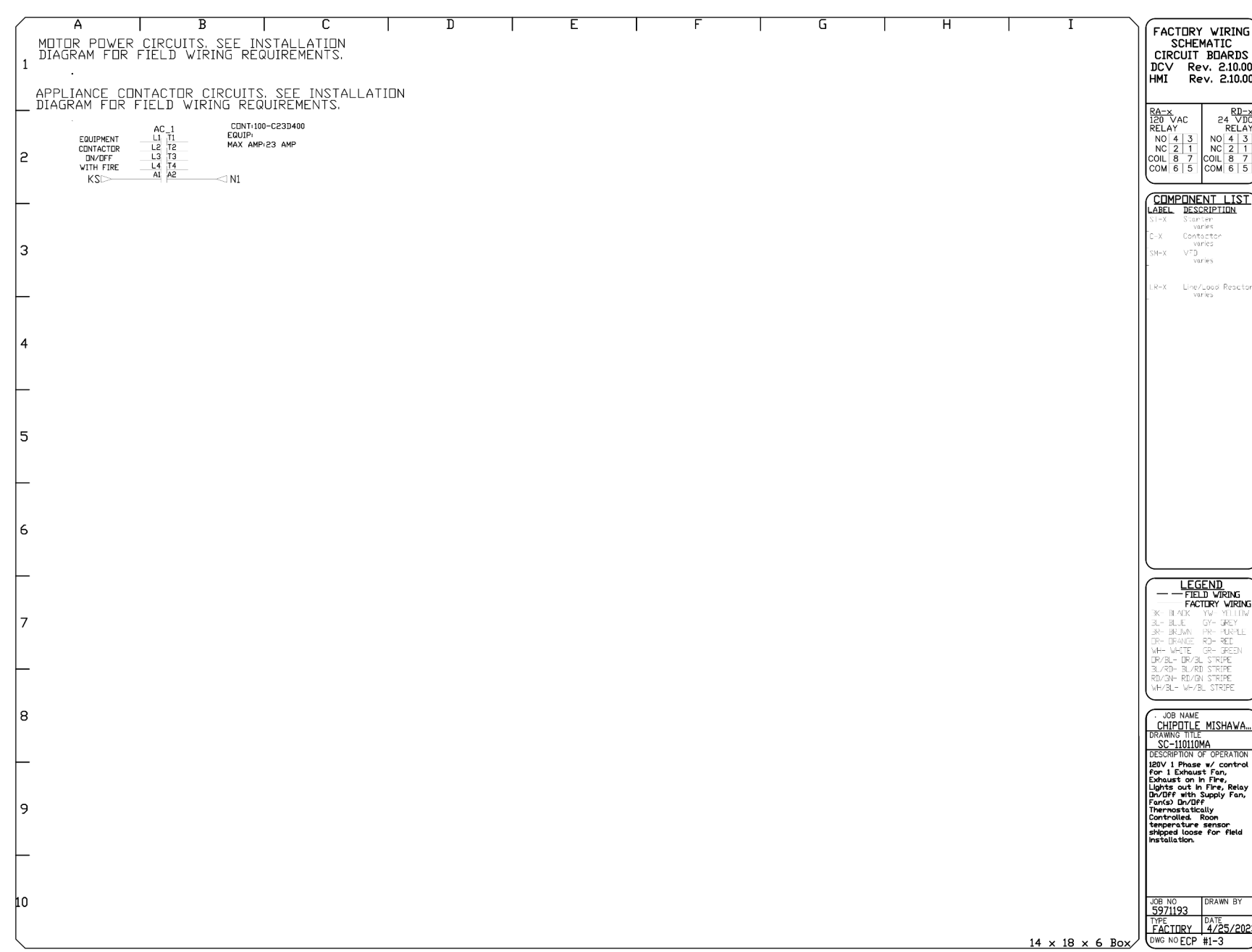
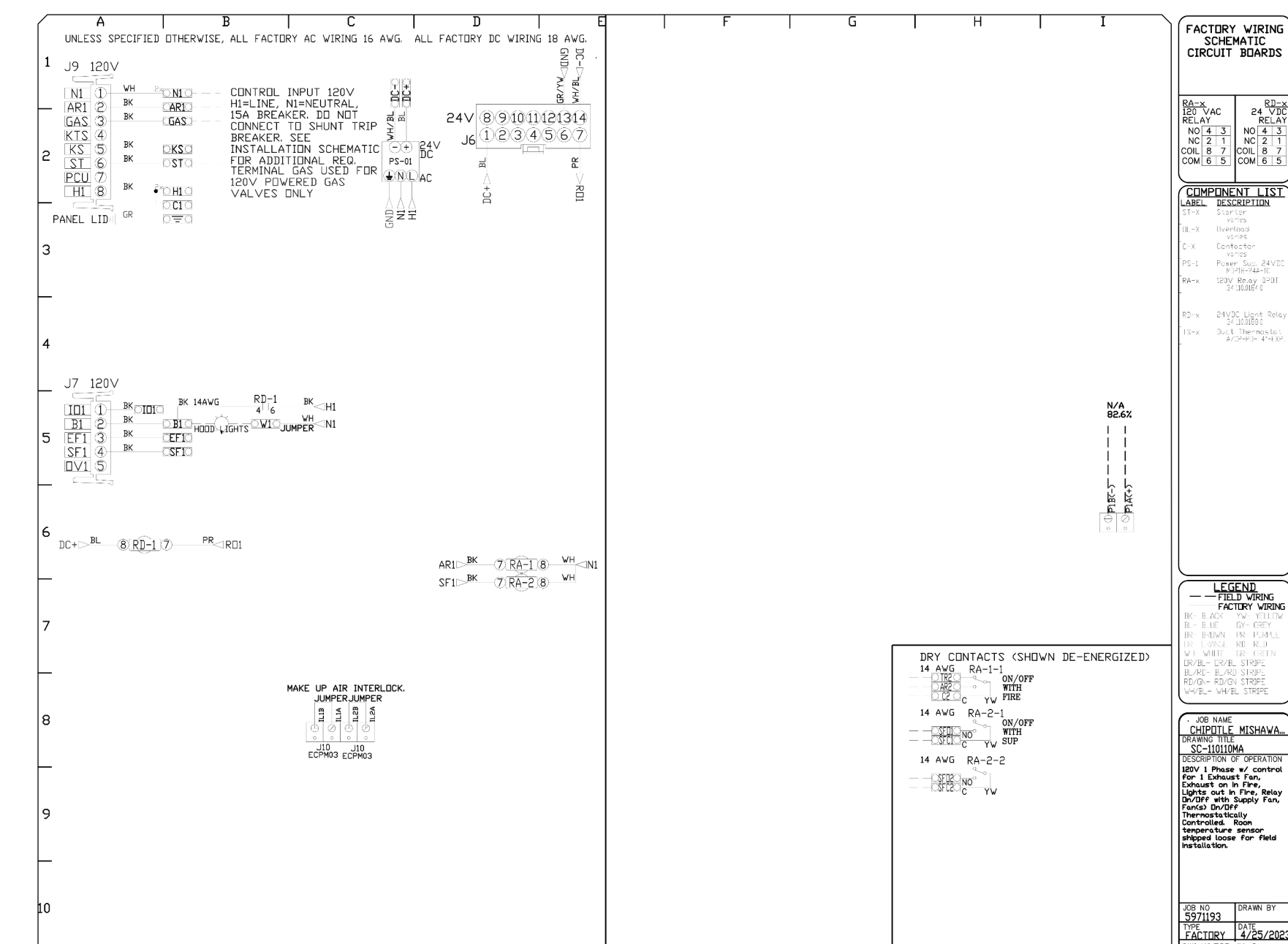
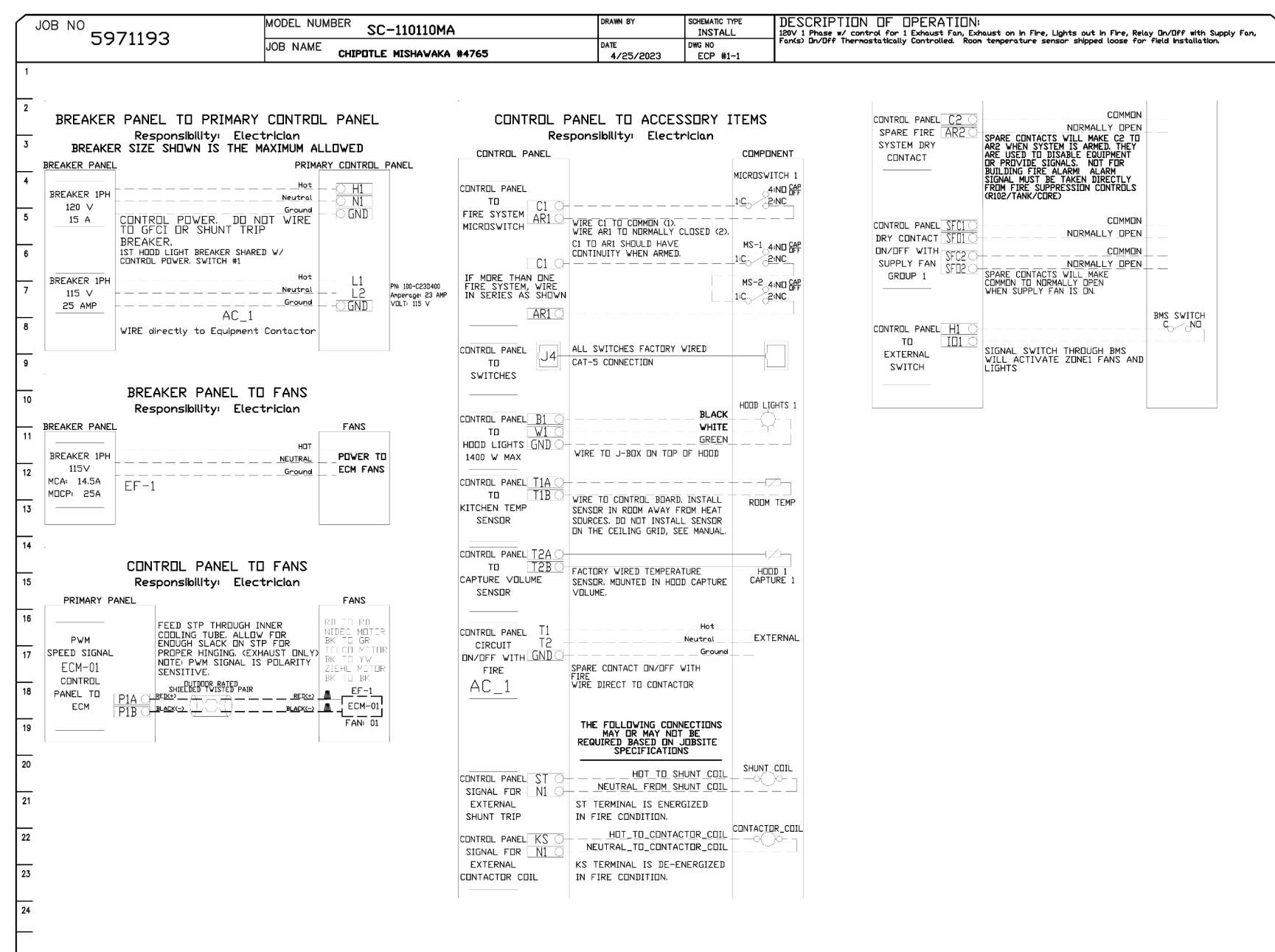
Contents:
CAPTIVEAIRE SHOP
DRAWINGS

M403

**HOOD SHOP DRAWING PRODUCED BY
MANUFACTURER - FOR REFERENCE ONLY**

ELECTRICAL PACKAGE - JOB#5971193

NO	TAG	PACKAGE #	LOCATION	SWITCHES		OPTION	FANS CONTROLLED					
				LOCATION	QUANTITY		FAN TAG	TYPE	HP	VOLT	FLA	
1		SC-11010MA	UTILITY CABINET RIGHT	UTILITY CABINET RIDGE	1 LIGHT	SMART CONTROLS THERMOSTATIC CONTROL W/ RELAY ON/OFF WITH SUPPLY	EF-1	EXHAUST	1	1000	115	11.6



REVISIONS

NO.	DESCRIPTION	DATE

CAPTIVE
Highwoods Group

4681 Parnham Park Rd., Raleigh, NC 27616 PHONE: (919) 875-5420 FAX: (919) 875-5577 EMAIL: reg@captivewire.com

DATE: 4/25/2023
DWG.#: 5971193
DRAWN BY: JMB-40
SCALE: 3/4" = 1'-0"
MASTER DRAWING

SHEET NO.
5

www.greenbergfarrow.com
1230 Peachtree Street, NE
Suite 2900 Atlanta, GA 30309
t: 404 601 4000

COPYRIGHT 2022
THIS DRAWING IS AN INSTRUMENT OF SERVICE
AND AS SUCH REMAINS THE PROPERTY OF
CHIPOTLE MEXICAN GRILL, INC. PERMISSION FOR
USE OF THIS DOCUMENT IS LIMITED AND CAN BE
EXTENDED ONLY BY WRITTEN AGREEMENT WITH
CHIPOTLE MEXICAN GRILL, INC.



STORE NO.: 4829
BLOOMSBURG, PA
ROUTE 42, BLOOMSBURG,
PA 17815

Issue Record:

REV.	DATE	DESCRIPTION
1	02/14/2024	BID SET

Drawn: AN
Checked: MPC

Project No.
202213260

Contents:
CAPTIVEAIRE SHOP
DRAWINGS

M404

Consultant:



www.greenbergfarrow.com
 1230 Peachtree Street, NE
 Suite 2900 Atlanta, GA 30309
 t: 404 601 4000

COPYRIGHT 2022
 THIS DRAWING IS AN INSTRUMENT OF SERVICE
 AND AS SUCH REMAINS THE PROPERTY OF
 CHIPOTLE MEXICAN GRILL, INC. PERMISSION FOR
 USE OF THIS DOCUMENT IS LIMITED AND CAN BE
 EXTENDED ONLY BY WRITTEN AGREEMENT WITH
 CHIPOTLE MEXICAN GRILL, INC.



CHIPOTLE MEXICAN GRILL, INC.
 PO BOX 382566
 COLUMBUS, OH 43218-2566
 TELEPHONE: (614) 318-2482
 INTERNET: WWW.CHIPOTLE.COM

STORE NO.: 4829
 BLOOMSBURG, PA
 ROUTE 42, BLOOMSBURG,
 PA 17815

Issue Record:

REV.	DATE	DESCRIPTION
09/18/2023	LANDLORD SET	
11/06/2023	PERMIT SET	
1 02/14/2024	BID SET	

Engineer

Drawn: AN
 Checked: MPC

Project No:
 202213260

Contents:

HVAC SCHEDULES

M600

ELECTRIC DUCT HEATER SCHEDULE

NOTES:
 1. THERMOSTAT
 2. CONTROL OPTION G
 3. PROVIDE VERTICAL INSTALLATION CONFIGURATION

TAG	BASIS FOR DESIGN			DUCT SIZE	ELECTRICAL				STAGE	NOTES
	MANUFACTURER	MODEL	AREA SERVED		KW	VOLTAGE	PHASE			
EDH-1	INDEECO	QUA	KITCHEN	26"x14"	17	208	3	2	1,2 & 3	
EDH-2	INDEECO	QUA	DINNING ROOM	30"x16"	16	208	3	2	1,2 & 3	

SANITIZING EQUIPMENT SCHEDULE

TAG	COUNT	DESCRIPTION	FURNISHED BY	INSTALLED BY	BASIS FOR DESIGN		REMARKS
					MANUFACTURER	MODEL	
SB-1	2	BATHROOM AIR PURIFICATION UNIT	TUV	GC	RGF ENVIRONMENTAL GROUP	BRU ASSEMBLY	SEE ELECTRICAL SHEETS FOR CONNECTION INFORMATION
SH-1	2	HVAC AIR PURIFICATION UNIT	TUV	GC	RGF ENVIRONMENTAL GROUP	REME-HALO	SEE DETAIL 6/M700 FOR INSTALLATION INFORMATION.
SI-1	3	ICE MACHINE TREATMENT SYSTEM	TUV	GC	RGF ENVIRONMENTAL GROUP	IMS-B-GA	SEE PLUMBING DRAWINGS FOR INSTALLATION INFORMATION.

FAN SCHEDULE

TAG	DESCRIPTION	AIRFLOW	E.S.P.	WEIGHT	ELECTRICAL		FURNISHED BY	INSTALLED BY	BASIS FOR DESIGN		REMARKS
					MOTOR POWER	V/P/H			MANUFACTURER	MODEL	
EF-1	UPBLAST UL762 EXHAUST FAN	1,900 CFM	1.20 in-wg	400 lb	2 hp	208/3/60	HS	GC	CAPTIVE-AIRE	DU180HFA	DIRECT DRIVE UL762 UPBLAST EXHAUST FAN FURNISHED WITH WEATHERPROOF DISCONNECT AND VENTED ROOF CURB
EF-2	DOWNBLAST RESTROOM EXHAUST FAN	150 CFM	0.60 in-wg	100 lb	0.18 hp	120/1/60	HS	GC	CAPTIVE-AIRE	DR12HFA	DIRECT DRIVE DOWNBLAST RESTROOM EXHAUST FAN FURNISHED WITH INTEGRAL DISCONNECT, SPEED CONTROL, BACKDRAFT DAMPER, AND CURB

VIROGUARD SCHEDULE

TAG	COUNT	DESCRIPTION	DUCT CONNECTION SIZE	FAN	FURNISHED BY	INSTALLED BY	BASIS FOR DESIGN
VG-1	1	VIROGUARD HOOD EXHAUST FAN ROOFTOP CONTAINMENT SYSTEM	16" X 16"	CAPTIVE-AIRE DU180HFA	TDC	GC	ENVIROMATIC

CONDENSING UNIT SCHEDULE

TAG	DESCRIPTION	NOMINAL CAPACITY	NUMBER OF		REFRIGERANT		WEIGHT	ELECTRICAL			FURNISHED BY	INSTALLED BY	BASIS FOR DESIGN		REMARKS
			COMPRESSORS	CIRCUITS	TYPE	CHARGE		MOCP	FLA	V/P/H			MANUFACTURER	MODEL	
CU-1	CONDENSING UNIT - WALK-IN COOLER		1	1	R-404A	10.4 lb	250 lb	15 A	9 A	208/3/60	WCS	GC	HARFORD	KPCL99MZOP-3E	FURNISHED WITH WALK-IN COOLER
CU-2	REMOTE CONDENSER - LOW CAPACITY ICE MAKER		0	1	R-404A	11.46 lb	100 lb			120/1/60	KES	GC	HOSHIZAKI	URC-9FZ	FURNISHED WITH ICE MAKER
CU-3	REMOTE CONDENSER - SODA MACHINE ICE MAKER		0	1	R-404A	3.86 lb	100 lb			120/1/60	KES	GC	HOSHIZAKI	URC-5FZ	FURNISHED WITH ICE MAKER

KITCHEN HOOD SCHEDULE

TAG	DESCRIPTION	MAX COOKING TEMP.	EXHAUST PLENUM						NO. OF LIGHT FIXTURES	WEIGHT	FURNISHED BY	INSTALLED BY	BASIS FOR DESIGN		REMARKS	
			AIRFLOW	E.S.P.	NO.	WIDTH	LENGTH	LENGTH					MANUFACTURER	MODEL		
HD-1	TYPE I CANOPY HOOD	600 °F	1,900 CFM	0.82 in-wg	1	10"	1' - 6"	9' - 4"	4' - 3"	6	800 lb	HS	GC	CAPTIVE-AIRE	5424 ND-2	MAT'L: 18 GA. TYPE 430 SS. FURNISHED WITH VERTICAL END PANELS, VAPORPROOF INCANDESCENT LIGHT FIXTURES, 16" TALL HE SS FILTERS, INTEGRAL UTILITY CABINET, ANSUL SYSTEM, DUCT COLLAR TEMPERATURE SENSOR, PREWIRE PACKAGE, SPARE FIRE SYSTEM DRY CONTACT, AND 4-POLE 20A CONTACTOR

ROOFTOP UNIT SCHEDULE

TAG	DESCRIPTION	NOMINAL CAPACITY	IEER	AIRFLOW			GROSS COOLING CAPACITY				ELECTRICAL HEATING CAPACITY		REFRIGERANT		ELECTRICAL			FURNISHED BY	INSTALLED BY	BASIS FOR DESIGN		REMARKS		
				TOTAL	OA	E.S.P.	TOTAL	SENSIBLE	DB	EAT	COND. EAT	OUTPUT	EAT	TYPE	CHARGE	WEIGHT	MOCP			MCA	V/P/H		MANUFACTURER	MODEL
RTU-1	KITCHEN ROOFTOP UNIT	8.5 ton	14.4	3,400 CFM	1,000 CFM	0.80 in-wg	106,500 Btu/h	77,300 Btu/h	80 °F	67 °F	95 °F	87,000 Btu/h	60 °F	R-410A	27.6 lb	1,272 lb	150 A	144 A	208/3/60	HES	GC	JOHNSON CONTROLS	XP102E	FURNISHED WITH COMP. ENTHALPY ECON., BAROMETRIC RELIEF, RET. SMOKE DETECTOR W/ REMOTE KEYED ANNUNCIATOR/RESET, M.O.D., MERV-8 FILTERS, CURB, HAIL GUARD, TOOLLESS HINGED ACCESS PANELS, DISCONNECT, & UNIT-MOUNTED CONVENIENCE RECEPTACLE
RTU-2	DINING ROOM ROOFTOP UNIT	10 ton	14.5	4,000 CFM	1,050 CFM	0.80 in-wg	123,000 Btu/h	89,600 Btu/h	80 °F	67 °F	95 °F	138,400 Btu/h	60 °F	R-410A	25.6 lb	1,279 lb	175 A	165.4 A	208/3/60	HES	GC	JOHNSON CONTROLS	XP120E	FURNISHED WITH COMP. ENTHALPY ECON., BAROMETRIC RELIEF, RET. SMOKE DETECTOR W/ REMOTE KEYED ANNUNCIATOR/RESET, M.O.D., MERV-8 FILTERS, CURB, HAIL GUARD, TOOLLESS HINGED ACCESS PANELS, DISCONNECT, & UNIT-MOUNTED CONVENIENCE RECEPTACLE

AIR BALANCE SCHEDULE

TAG	SUPPLY FLOW	RETURN FLOW	OA AIRFLOW	EXHAUST FLOW	SUBTOTAL
EF-1	0 CFM	0 CFM	0 CFM	1,900 CFM	-1,900 CFM
EF-2	0 CFM	0 CFM	0 CFM	150 CFM	-150 CFM
RTU-1	3,400 CFM	2,400 CFM	1000 CFM	0 CFM	1,000 CFM
RTU-2	4,000 CFM	2,950 CFM	1050 CFM	0 CFM	1,050 CFM
NET PRESSURIZATION					0 CFM

CONTROL FUNCTIONS

- THE MAIN COOKING EXHAUST FAN AND MAKE-UP AIR UNIT SHALL BE INTERLOCKED TO OPERATE TOGETHER. THIS CONTROL CIRCUIT IS ACTIVATED BY A SWITCH AND INCLUDES A FIRE PROTECTION OVERRIDE.
- THE TEMPERATURE IN EACH ZONE IS CONTROLLED BY SPACE TEMPERATURE SENSORS CONNECTED TO THE THERMOSTATS LOCATED IN THE OFFICE. ALL ZONES SHALL OPERATE WITH CONTINUOUS FAN OPERATION DURING OCCUPIED TIMES AND INTERMITTENTLY AS NEEDED TO MAINTAIN SET POINTS DURING UNOCCUPIED TIMES. OUTSIDE AIR DAMPERS SHALL BE OPEN CONTINUOUSLY WHEN EITHER IN OCCUPIED MODE OR WHEN THE HOOD SYSTEM IS ON AND SHALL BE CLOSED DURING UNOCCUPIED PERIODS.
- THE THERMOSTATS SHALL DETERMINE OCCUPIED/UNOCCUPIED STATUS BASED ON THE SCHEDULE IN THE ENERGY MANAGEMENT SYSTEM.

AIR TERMINAL SCHEDULE

TAG	DESCRIPTION	FACE SIZE	MATERIAL	FINISH	MOUNTING	FURNISHED BY	INSTALLED BY	BASIS FOR DESIGN		NOTES
								MANUFACTURER	MODEL	
CD1	PERFORATED CEILING DIFFUSER	24" X 24"	ALUMINUM	WHITE	LAY-IN CEILING	GC	GC	NAILOR	4320A TYPE L	PROVIDE WITH INTEGRAL OBD
CD2	PERFORATED CEILING DIFFUSER	24" X 12"	ALUMINUM	WHITE	LAY-IN CEILING	GC	GC	NAILOR	4320A TYPE L	PROVIDE WITH INTEGRAL OBD, REMOVE 4-WAY DEFLECTORS
ER1	PERFORATED CEILING EXHAUST	12" X 12"	ALUMINUM	WHITE	SURFACE MOUNT	GC	GC	NAILOR	4330R TYPE S	PROVIDE INTEGRAL OBD
RG1	PERFORATED CEILING RETURN	48" X 24"	ALUMINUM	WHITE	LAY-IN CEILING	GC	GC	NAILOR	4330R TYPE L	
RG3	PERFORATED CEILING RETURN	48" X 24"	ALUMINUM	WHITE	SURFACE MOUNT	GC	GC	NAILOR	4330R TYPE S	
SR1	ADJUSTABLE TURBO NOZZLE	SEE NECK SIZE	ALUMINUM	WHITE	WALL	GC	GC	AIR CONCEPTS	ANR-14	PROVIDE WITH CONCEALED MOUNTING AND FACE-ACCESSIBLE OBD
SR2	DOUBLE DEFLECTION SUPPLY REGISTER	SEE NECK SIZE	ALUMINUM	WHITE	WALL	GC	GC	NAILOR	51DH	PROVIDE WITH INTEGRAL OBD

Issue Record:

REV.	DATE	DESCRIPTION
09/18/2023		LANDLORD SET
11/06/2023		PERMIT SET

Engineer

Drawn: AN
 Checked: MPC

Project No:
 202213260

Contents:
 HVAC DETAILS

M700

