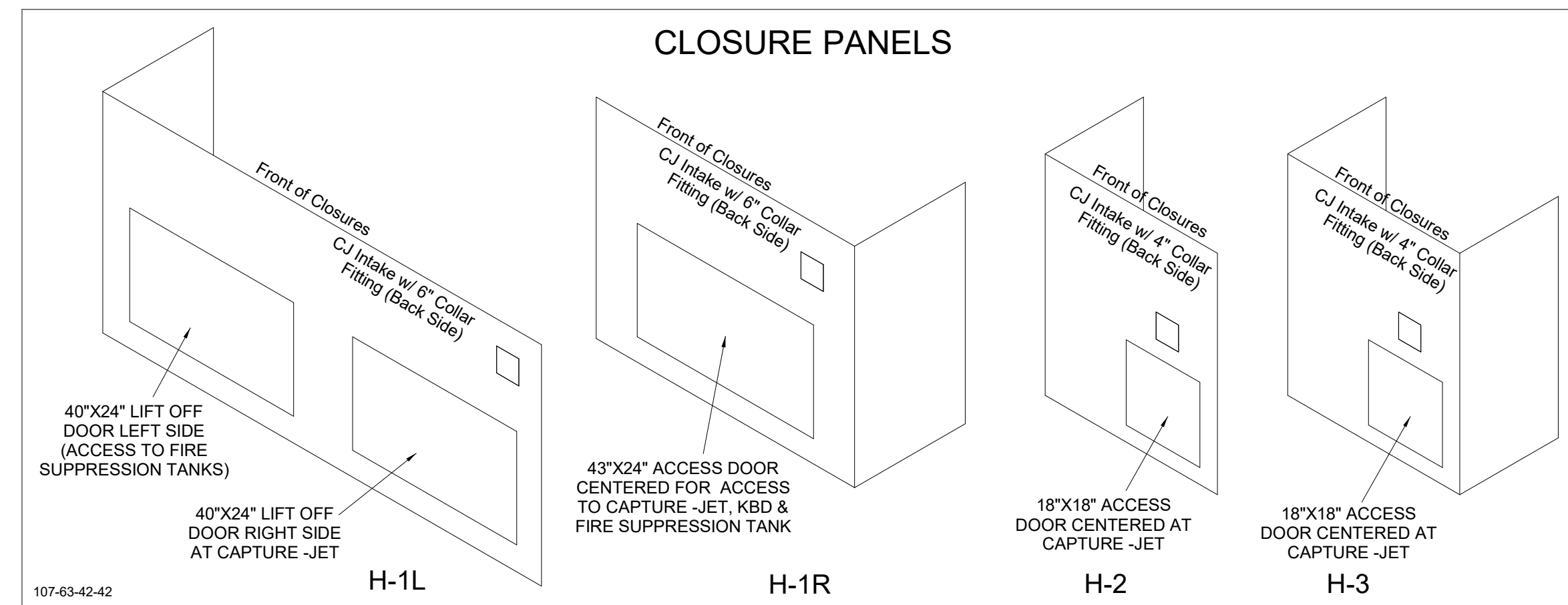


HOOD MODEL	HOOD NUMBER	EXHAUST COLLAR			EXHAUST AIR INFORMATION			CAPTURE AIR INFORMATION		S.S. KSA FILTERS		LED LIGHTS	QTY	CEILING CLOSURES		KBD DAMPER	K FACTOR (CFM = K FACTOR * √DP)	MATERIAL
		QTY	LENGTH	WIDTH	CFM	TAB	SP	CFM	SP	FULL	HALF			CLOSURE HEIGHT	CEILING HEIGHT			
KVL-2-IC	H-1L	1	14"	8"	1204	0.13"	0.22"	80	0.30"	5	-	3	2	51"	122"	*	3369	ALL 18 GA 430 S.S.
KVL-2-IC	H-1R	1	8"	8"	709	0.13"	0.23"	47	0.30"	3	-	2	2					
KVL-C-IC	H-2	1	8"	8"	701	0.30"	0.39"	30	0.29"	2	-	1	2					
KVL-C-IC	H-3	1	8"	8"	701	0.30"	0.39"	30	0.29"	2	-	1	3					

FOR REFERENCE ONLY

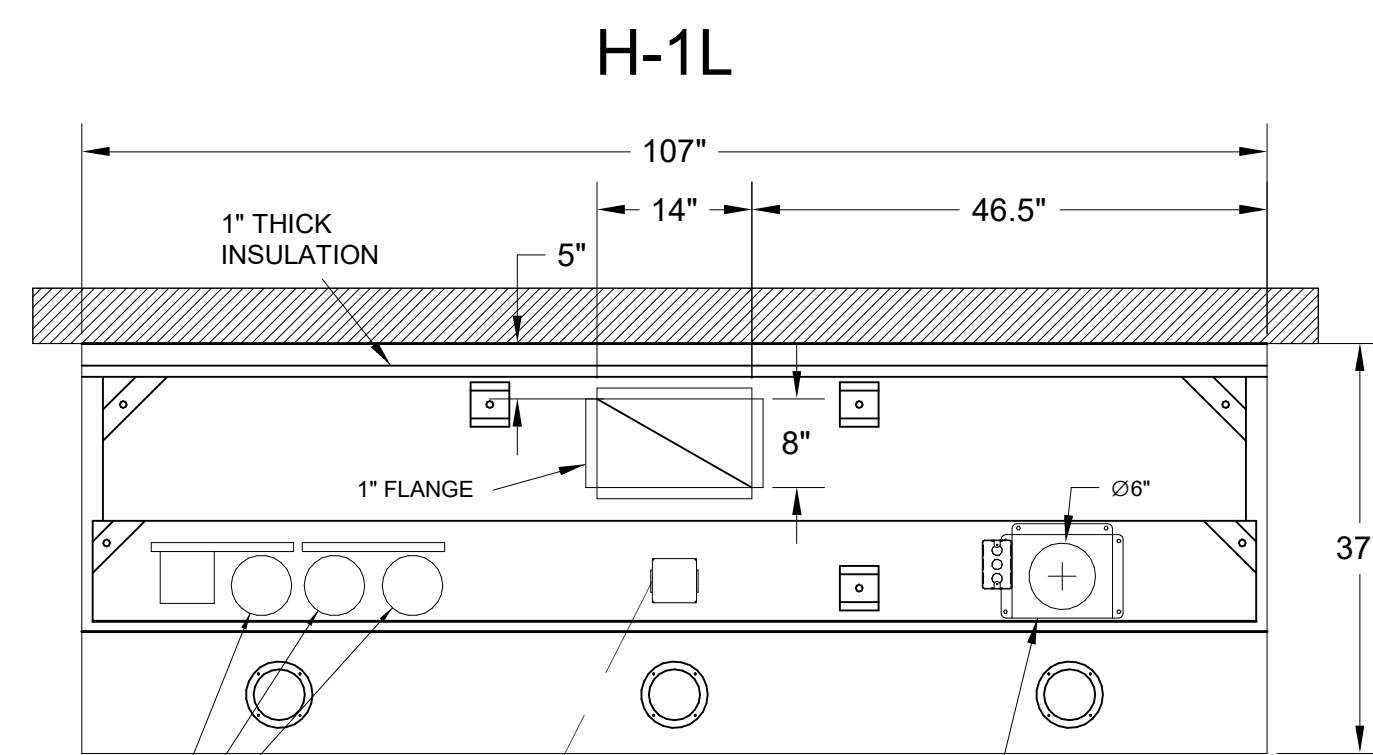
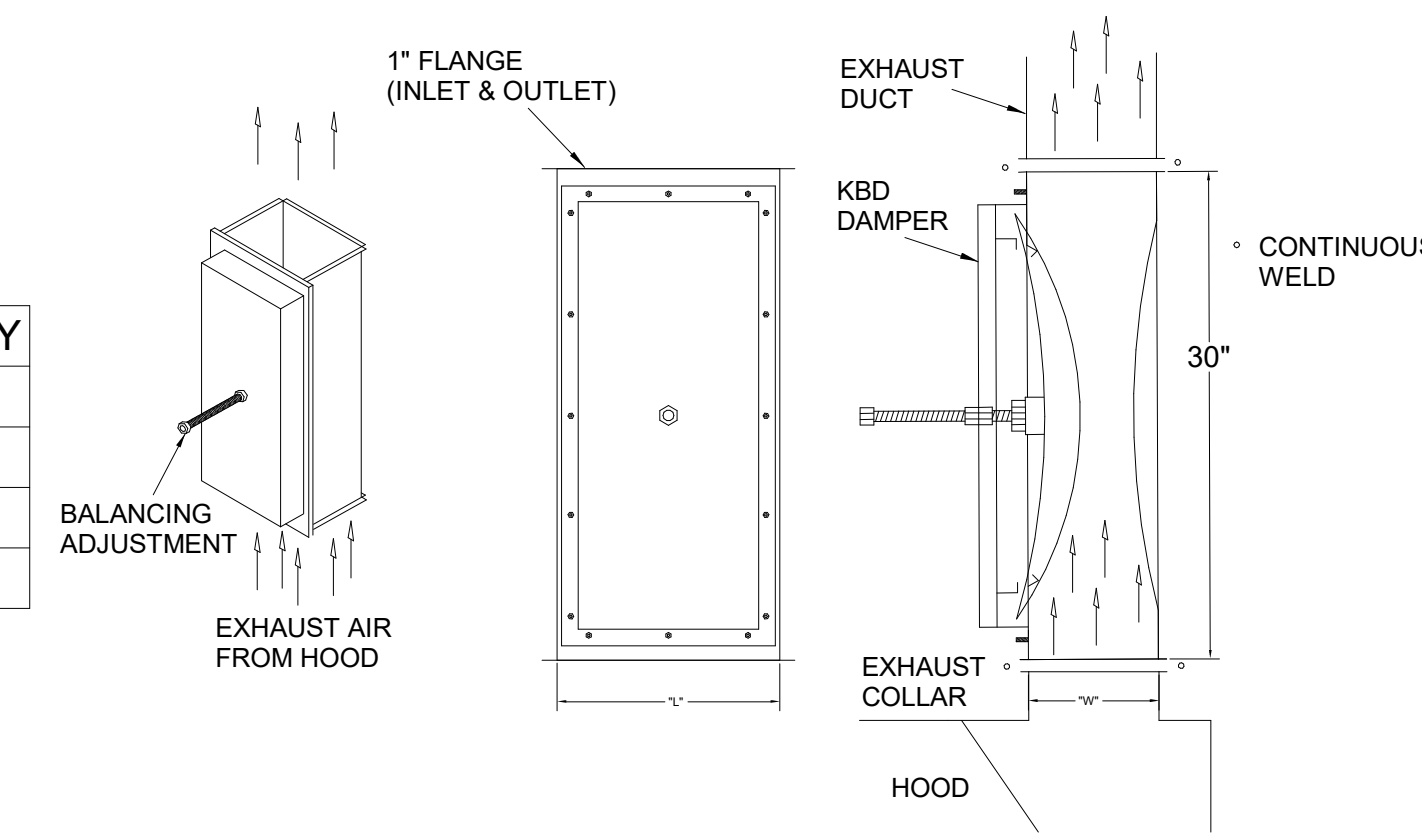


**MODEL:KBD
CALIBRATED KBDs
KITCHEN BALANCING DAMPER**

EXHAUST VOLUME DAMPER

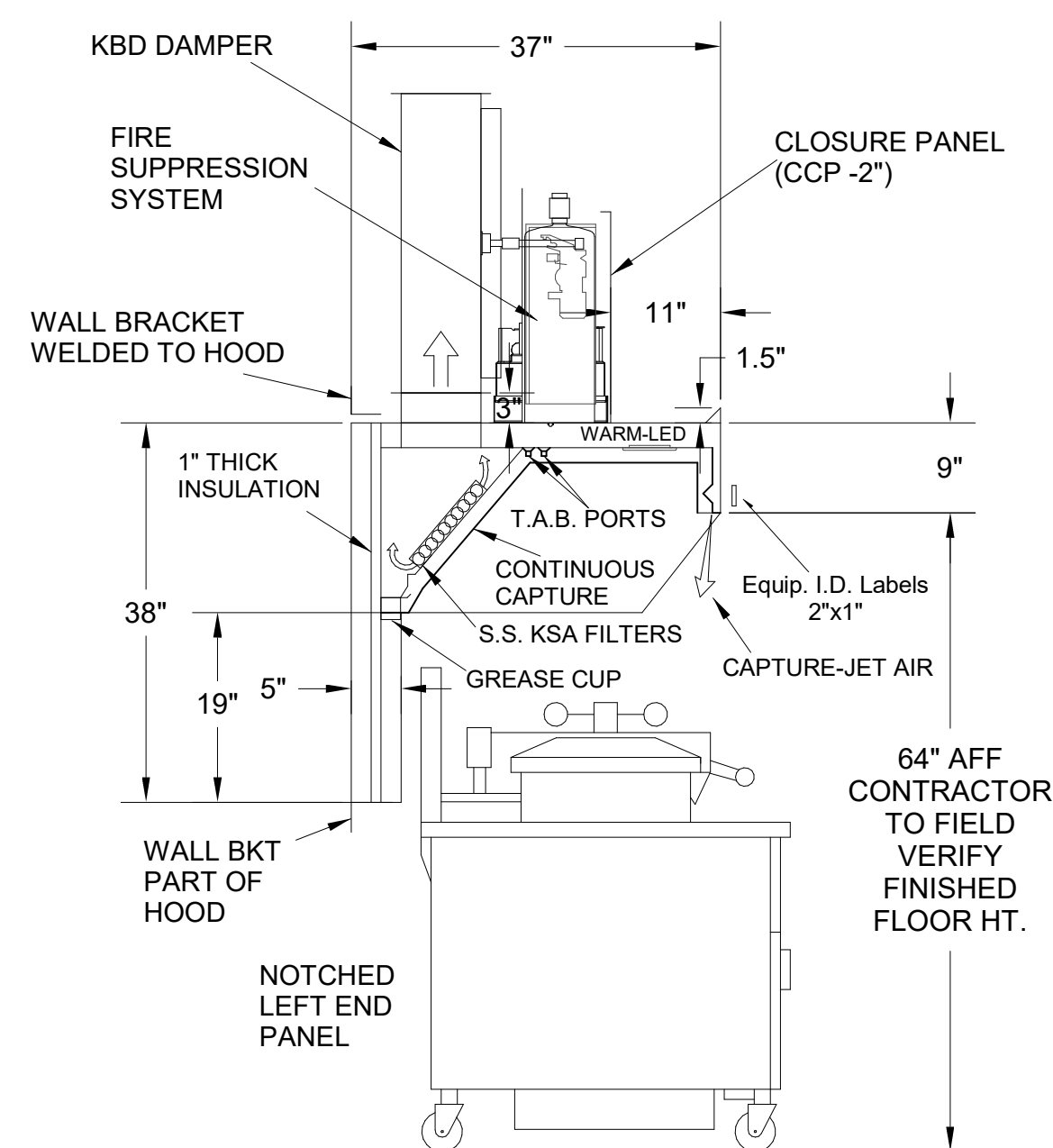
TAG	"L"	"W"	QUANTITY
H-1L	14"	8"	1
H-1R	8"	8"	1
H-2	8"	8"	1
H-3	8"	8"	1

MATERIAL: FRAME - 16GA CONT.
GALV. ADJUSTABLE PANEL 18GA S.S.



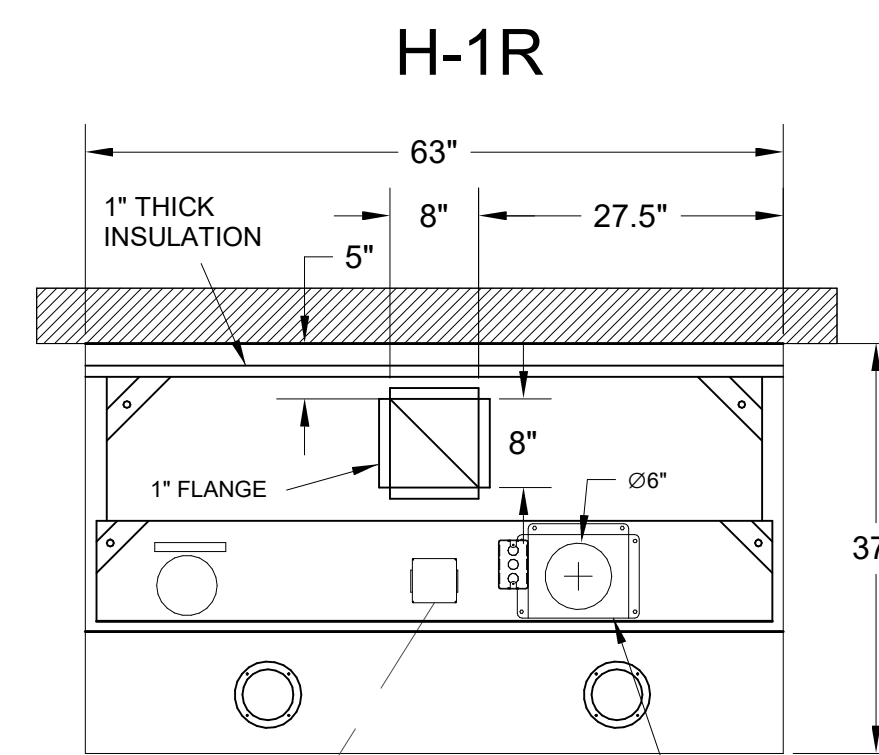
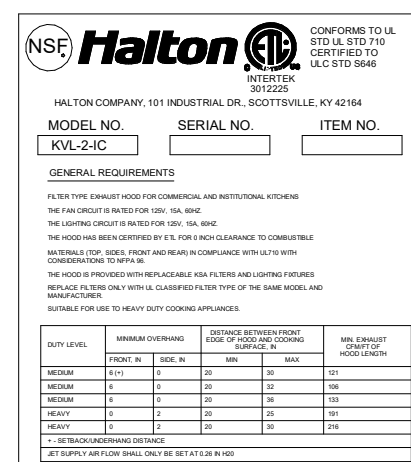
120/1 INCOMING LIGHT & CAPTURE JET FAN POWER
INTERNAL CAPTURE-JET FAN ASSEMBLY
FIRE SUPPRESSION COMPONENTS

PLAN VIEW



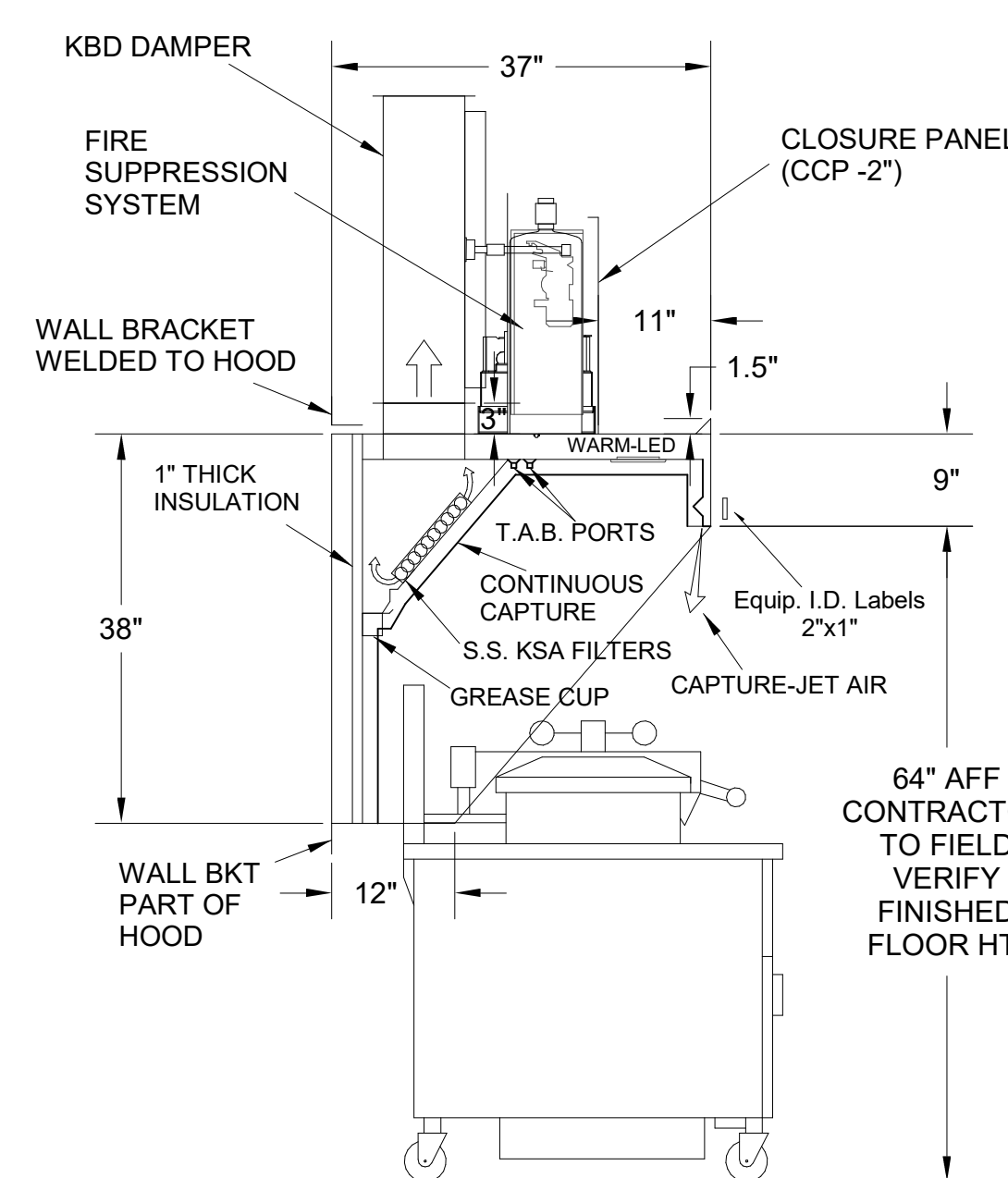
H-1L SECTION VIEW

- CEILING CLOSURE RECESSED 11" FROM FRONT TO CREATE SHELF
- FRONT CLOSURE PANEL WITH 40"x24" LIFT OUT DOOR LEFT SIDE (ACCESS TO FIRE SUPPRESSION)
- 40"x24" LIFT DOOR RIGHT SIDE AT CAPTURE-JET WITH FRONT CJ INTAKE
- CONTINUOUS CAPTURE INTERNAL RIGHT END CUTOUT
- 3" REAR STAND-OFF TO HAVE 1" THICK INSULATION
- NOTCHED LEFT END PANEL
- GREASE CUP RIGHT END
- ANSUL WEIGHT = 328 LBS
- AMEREX WEIGHT = 264 LBS



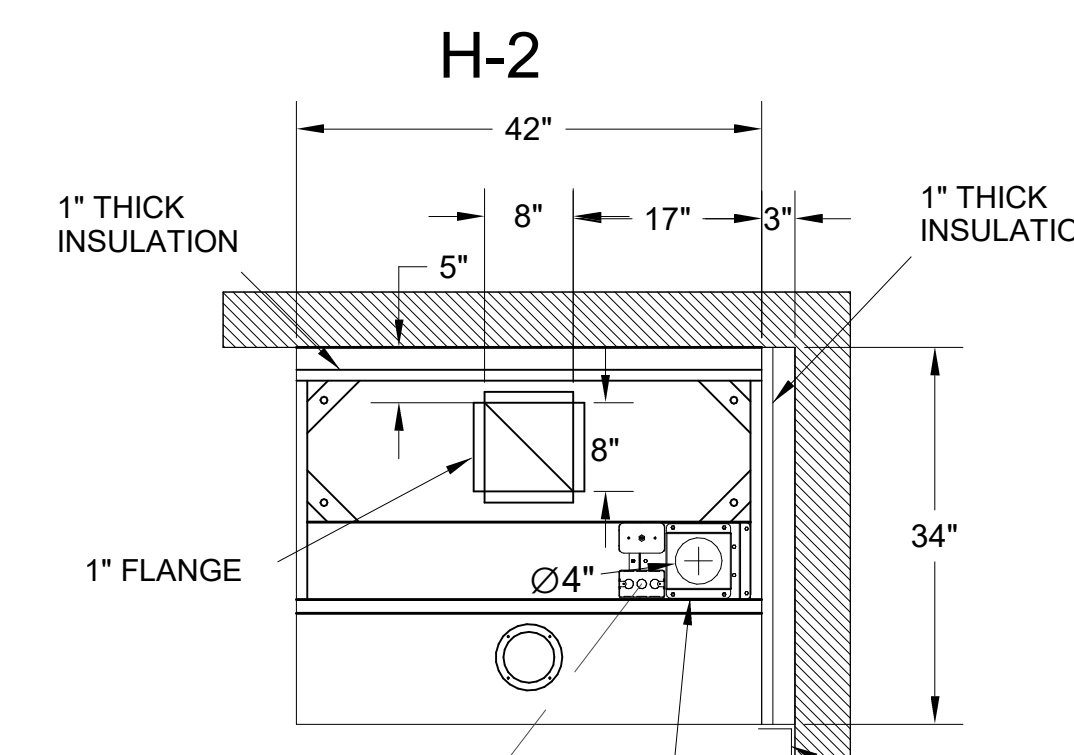
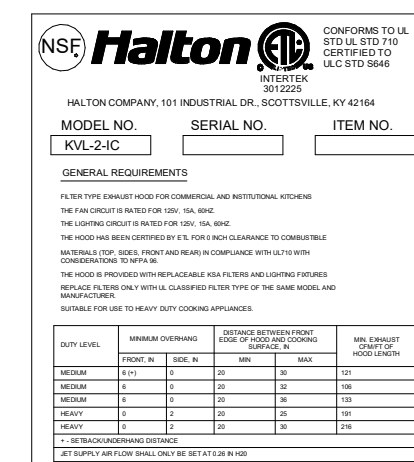
120/1 INCOMING LIGHT & CAPTURE JET FAN POWER
INTERNAL CAPTURE-JET FAN ASSEMBLY

PLAN VIEW



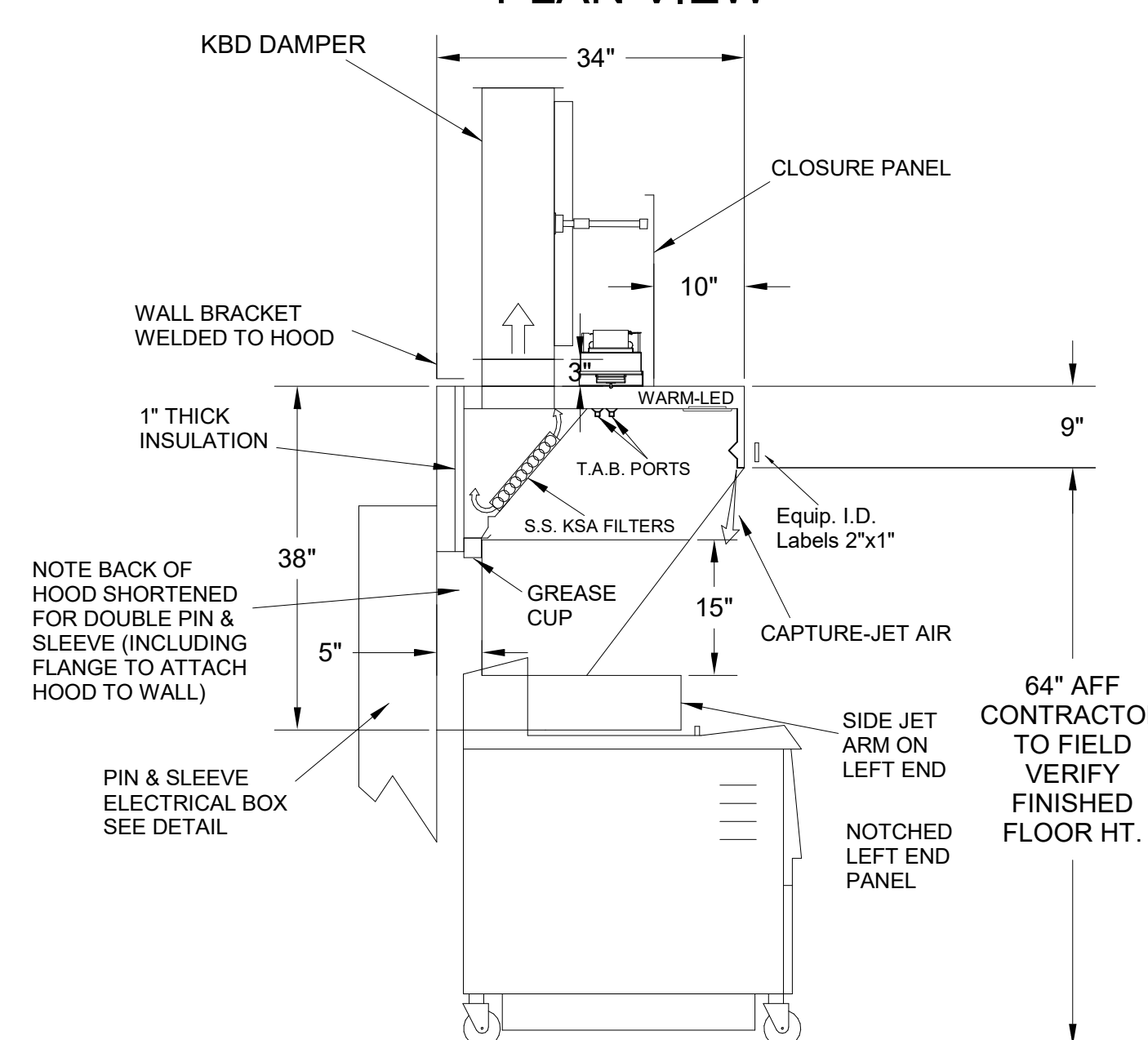
H-1R SECTION VIEW

- CEILING CLOSURE RECESSED 11" FROM FRONT TO CREATE SHELF
- FRONT CLOSURE PANEL WITH 43"x24" ACCESS DOOR FOR ACCESS TO CAPTURE-JET AND FIRE SUPPRESSION
- CONTINUOUS CAPTURE INTERNAL LEFT END CUTOUT
- 3" REAR STAND-OFF TO HAVE 1" THICK INSULATION
- GREASE CUP RIGHT END



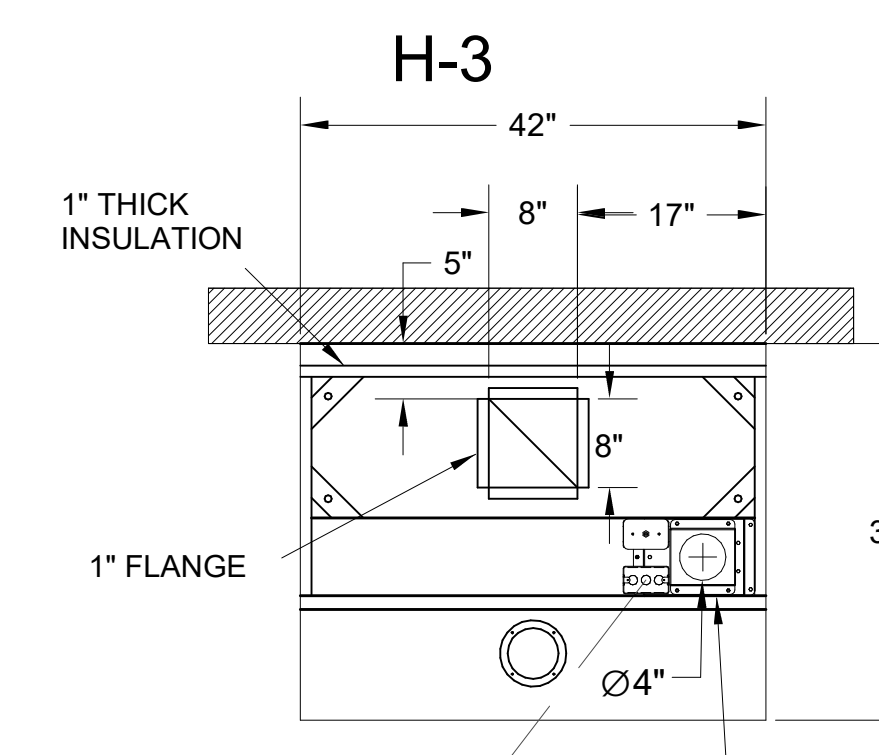
120/1 INCOMING LIGHT & CAPTURE JET FAN POWER
INTERNAL CAPTURE-JET FAN ASSEMBLY

PLAN VIEW



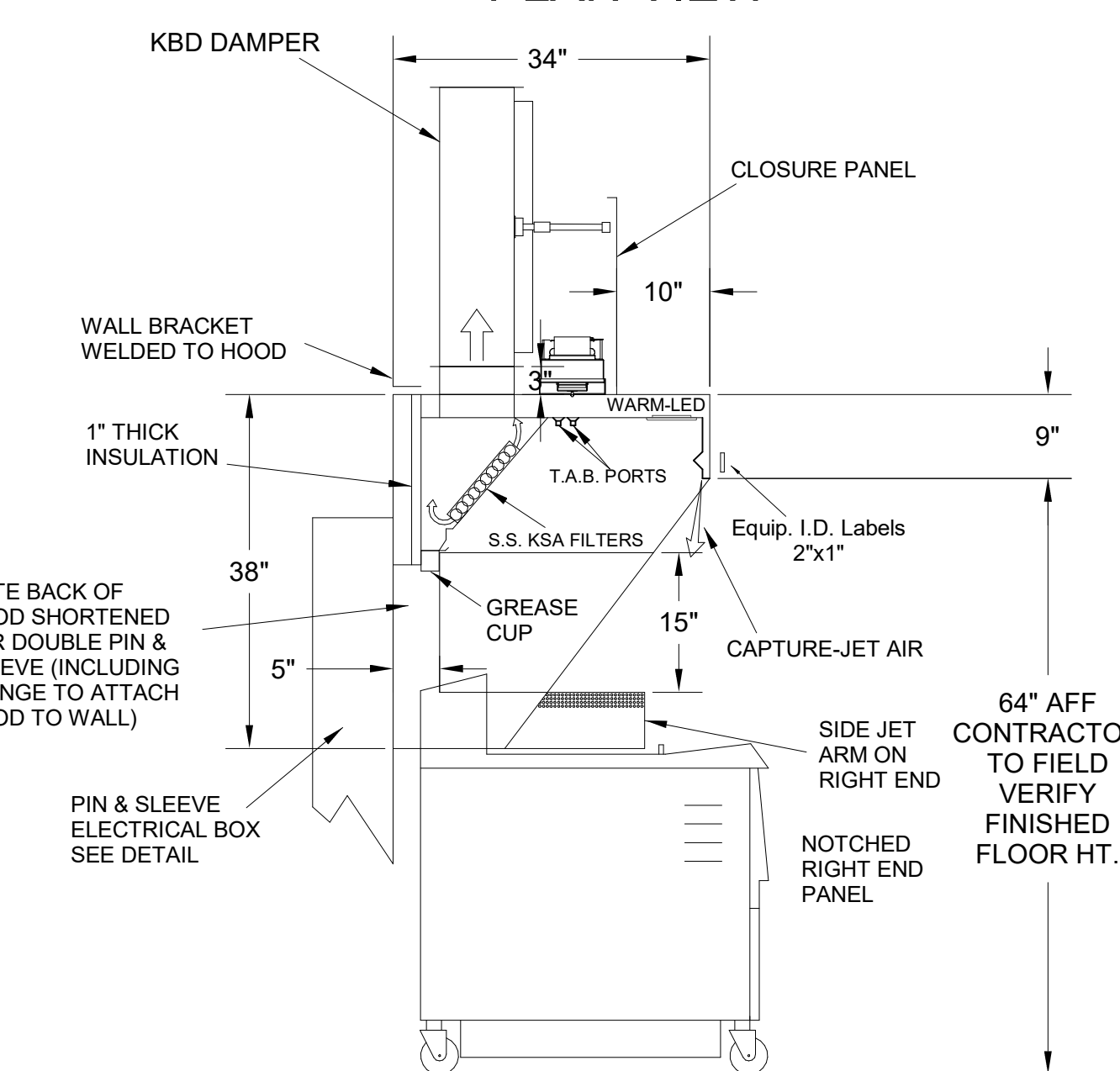
H-2 SECTION VIEW

- CEILING CLOSURE RECESSED 10" FROM FRONT TO CREATE SHELF
- 18"x18" ACCESS DOOR CENTERED AT CAPTURE-JET WITH FRONT CJ INTAKE
- NOTCHED LEFT END PANEL
- DOUBLE RECEPTACLE PIN & SLEEVE
- 3"x3" TRIM STRIP FOR STANDOFF ON RIGHT END
- 3" SIDE & REAR STAND-OFF TO HAVE 1" THICK INSULATION
- GREASE CUP RIGHT END



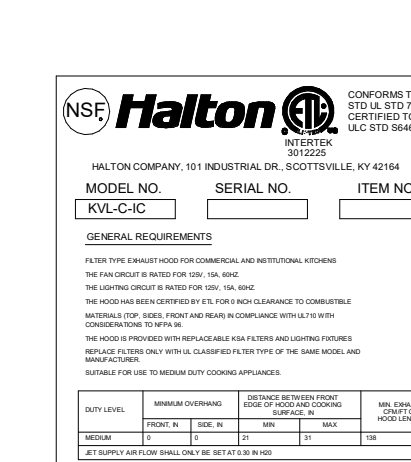
120/1 INCOMING LIGHT & CAPTURE JET FAN POWER
INTERNAL CAPTURE-JET FAN ASSEMBLY

PLAN VIEW



H-3 SECTION VIEW

- CEILING CLOSURE RECESSED 10" FROM FRONT TO CREATE SHELF
- 18"x18" ACCESS DOOR CENTERED AT CAPTURE-JET WITH FRONT CJ INTAKE
- NOTCHED RIGHT END PANEL
- DOUBLE RECEPTACLE PIN & SLEEVE
- 3" REAR STAND-OFF TO HAVE 1" THICK INSULATION
- GREASE CUP RIGHT END



THIS DRAWING MUST BE CHECKED, SIGNED AND RETURNED TO THE APPROPRIATE FACTORY. PLEASE VERIFY THE FOLLOWING:
1. ALL DIMENSIONAL INFORMATION, MOUNTING POSITIONS
2. THE LOCATION AND TYPE OF COOKING EQUIPMENT.
NOTE TO APPROVER:
ANY CHANGES IN COOKING EQUIPMENT SUCH AS INCREASED ENERGY INPUTS OR EQUIPMENT POSITION MAY AFFECT EXHAUST AIRFLOW. HALTON MUST BE NOTIFIED IF ANY OF THESE CHANGES OCCUR. A RECALCULATION EXHAUST AIRFLOW MAY BE REQUIRED.
 REVISE AND RESUBMIT
 APPROVED FOR FABRICATION
 WITH NO CHANGES
 WITH CHANGES AS NOTED
APPROVED BY: _____ DATE: _____



WEBSITE: www.halton.com

MAIL APPROVED DRAWINGS TO APPROPRIATE FACTORY BELOW:

REV.	DESCRIPTION	DATE	BY
1	CREATED HOOD BLOCKS	06.27.23	SKK
2	SHEET LAYOUT	08.28.23	SKK
3	NO CHANGE	02.02.24	SKK
4	ADDED GREASE CUPS	05.16.24	SKK
5	ADDED 1.5 GAL TANK TO ANSUL SYSTEM	07.26.24	SKK

REVISION DESCRIPTION

HALTON CO. (USA)
101 INDUSTRIAL DRIVE
SCOTTSDALE, AZ 85254
1-270-237-5800

HALTON CO. (CANADA)
1021 BREVIK PLACE
MISSISSAUGA, ON L4W 3R7
1-905-624-0301

PROJECT: CHICK-FIL-A P14 NAME

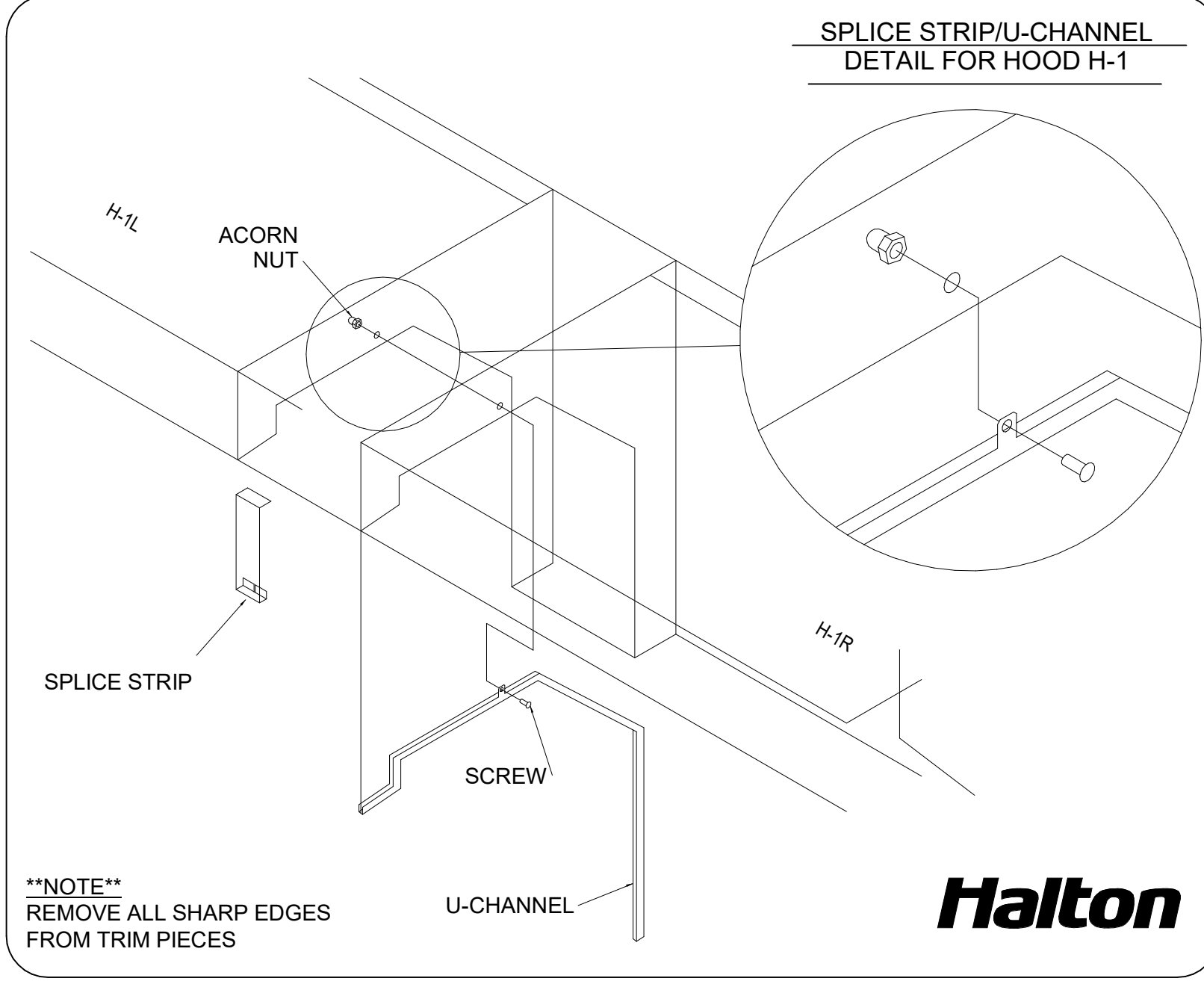
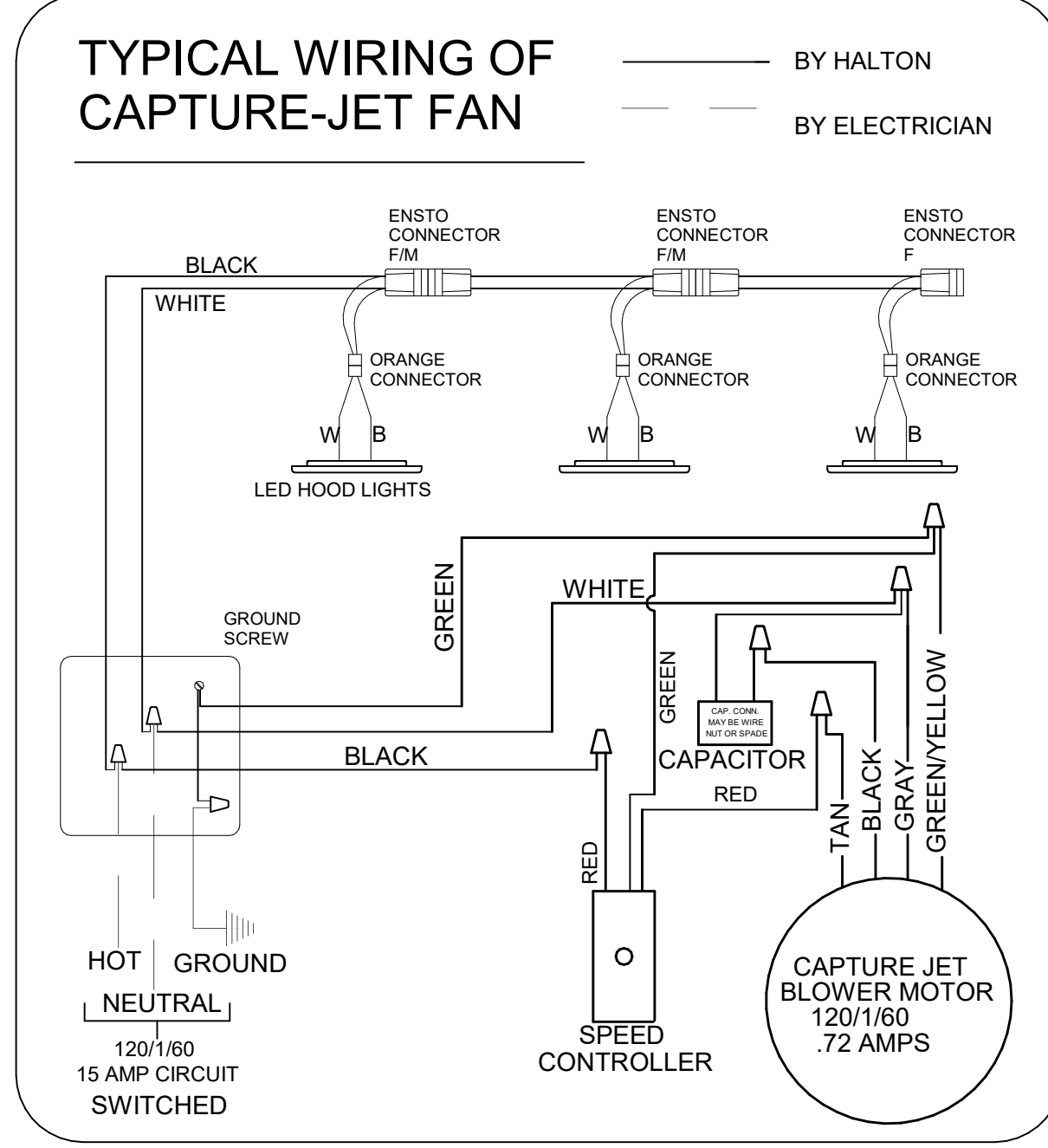
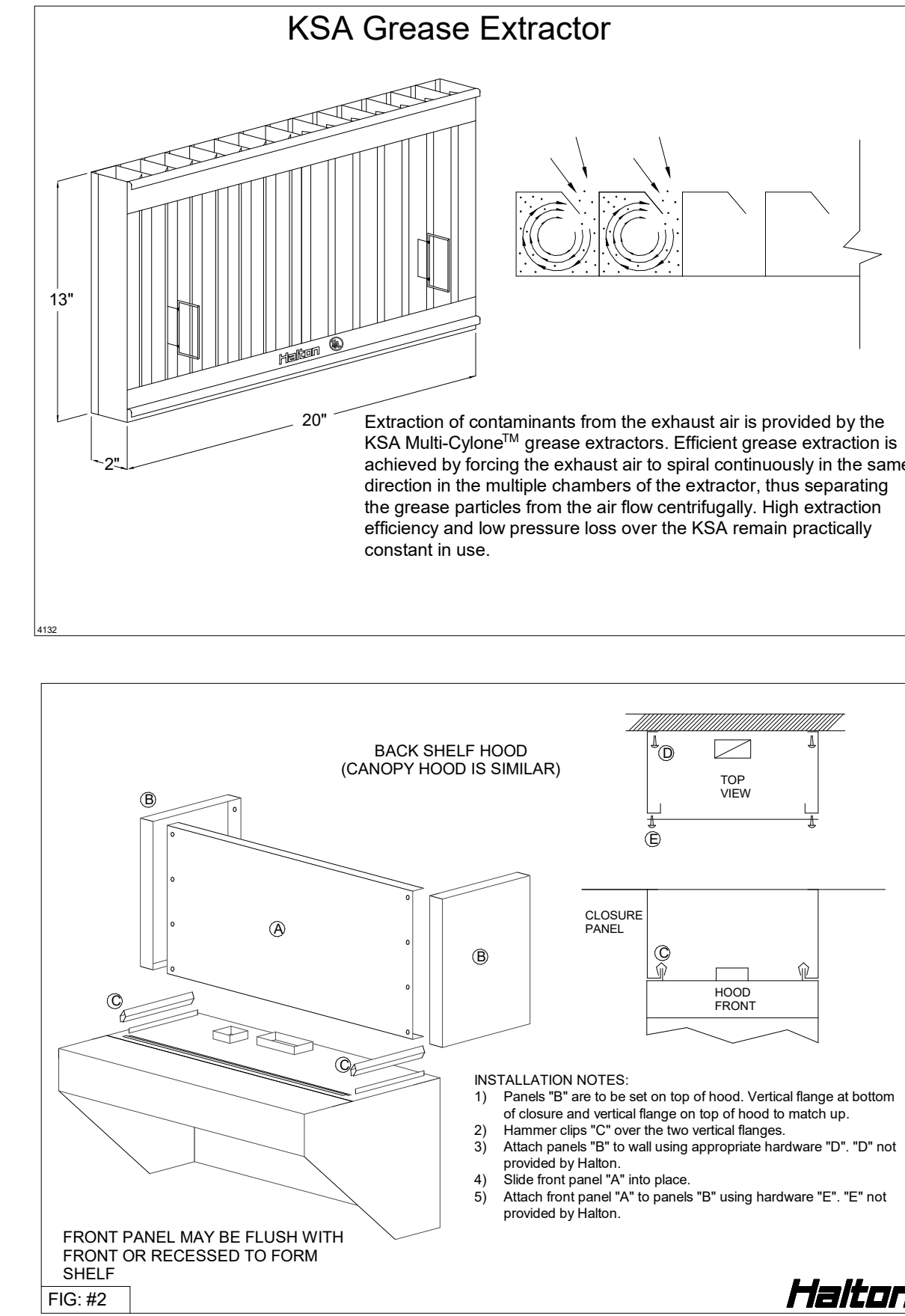
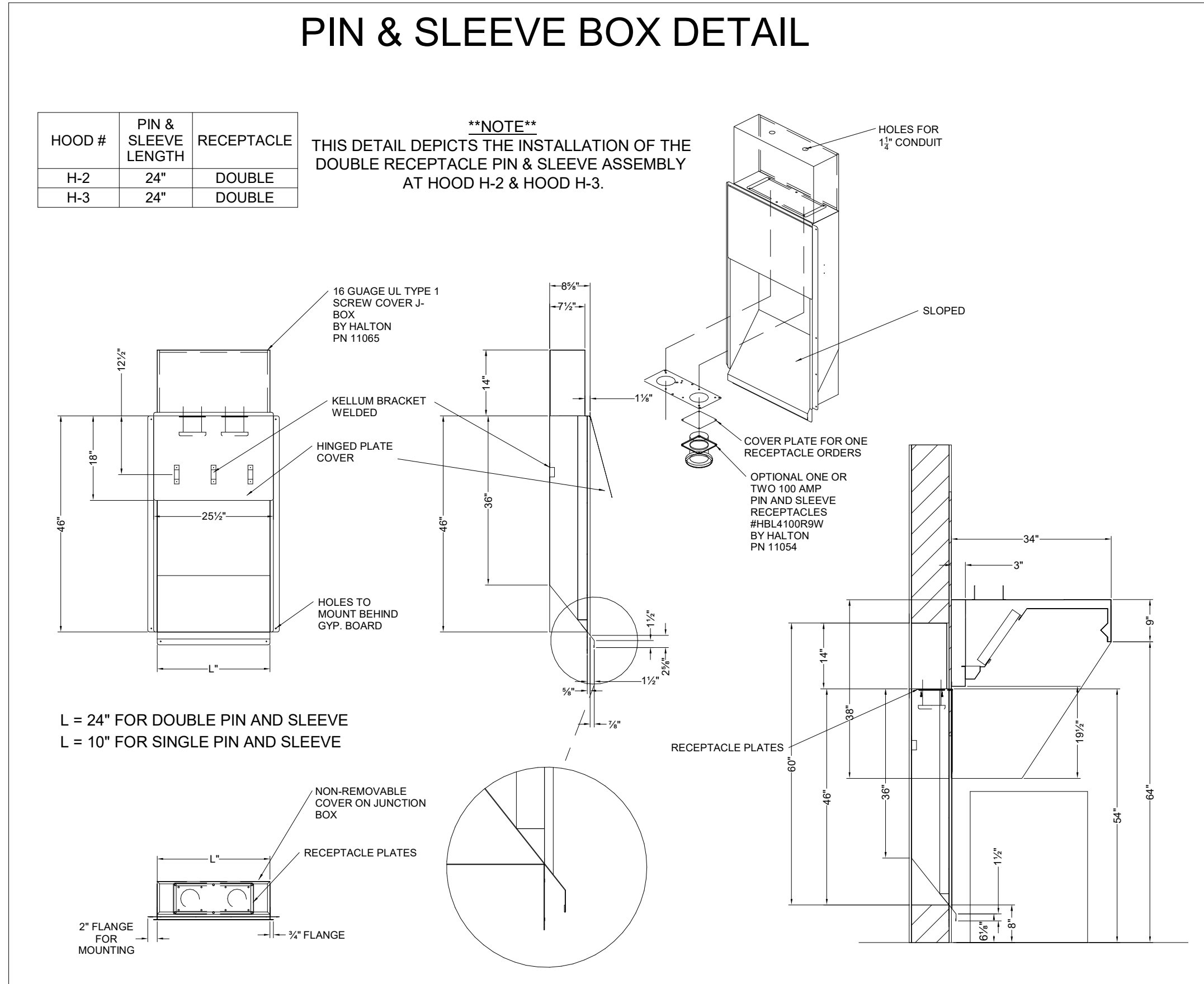
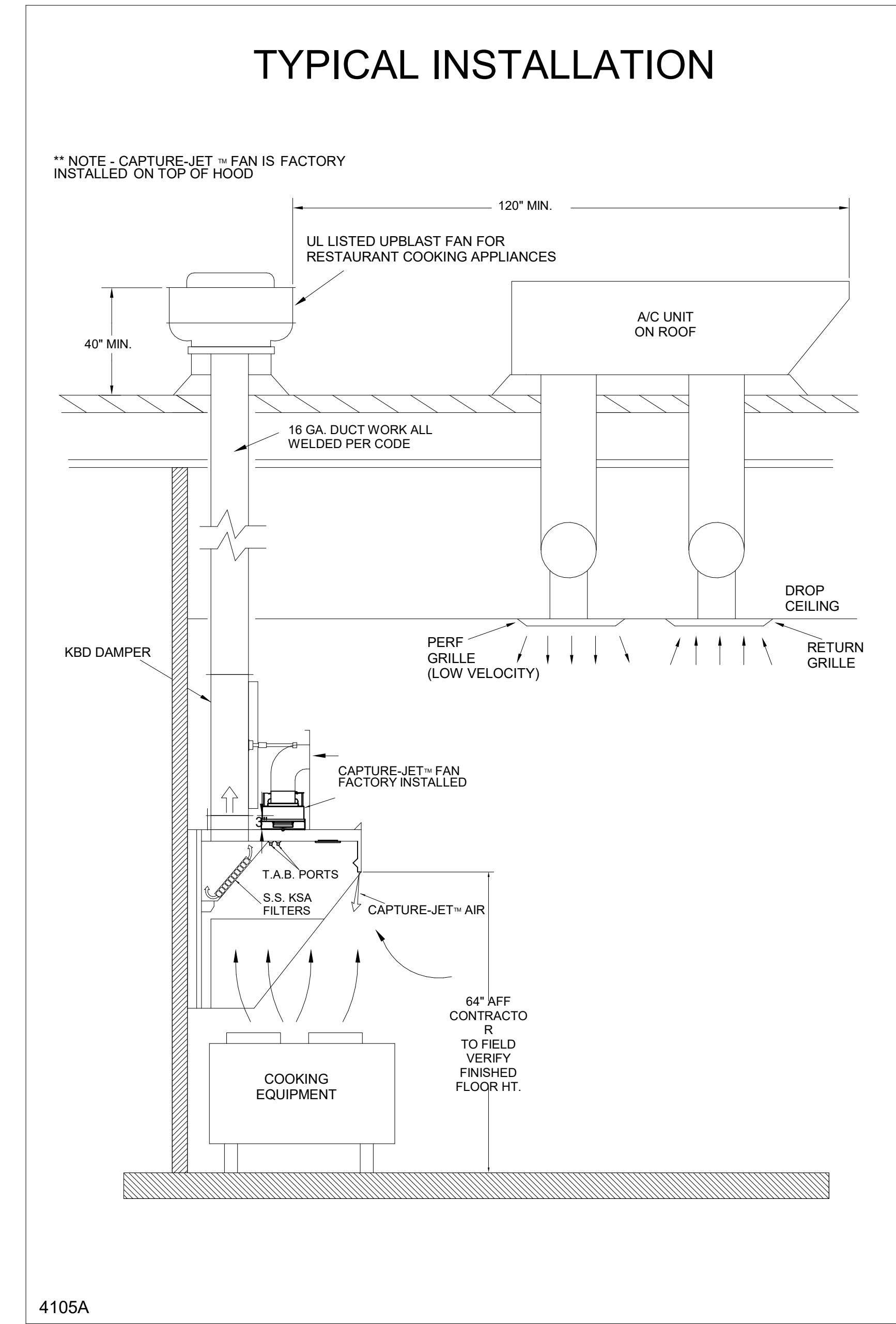
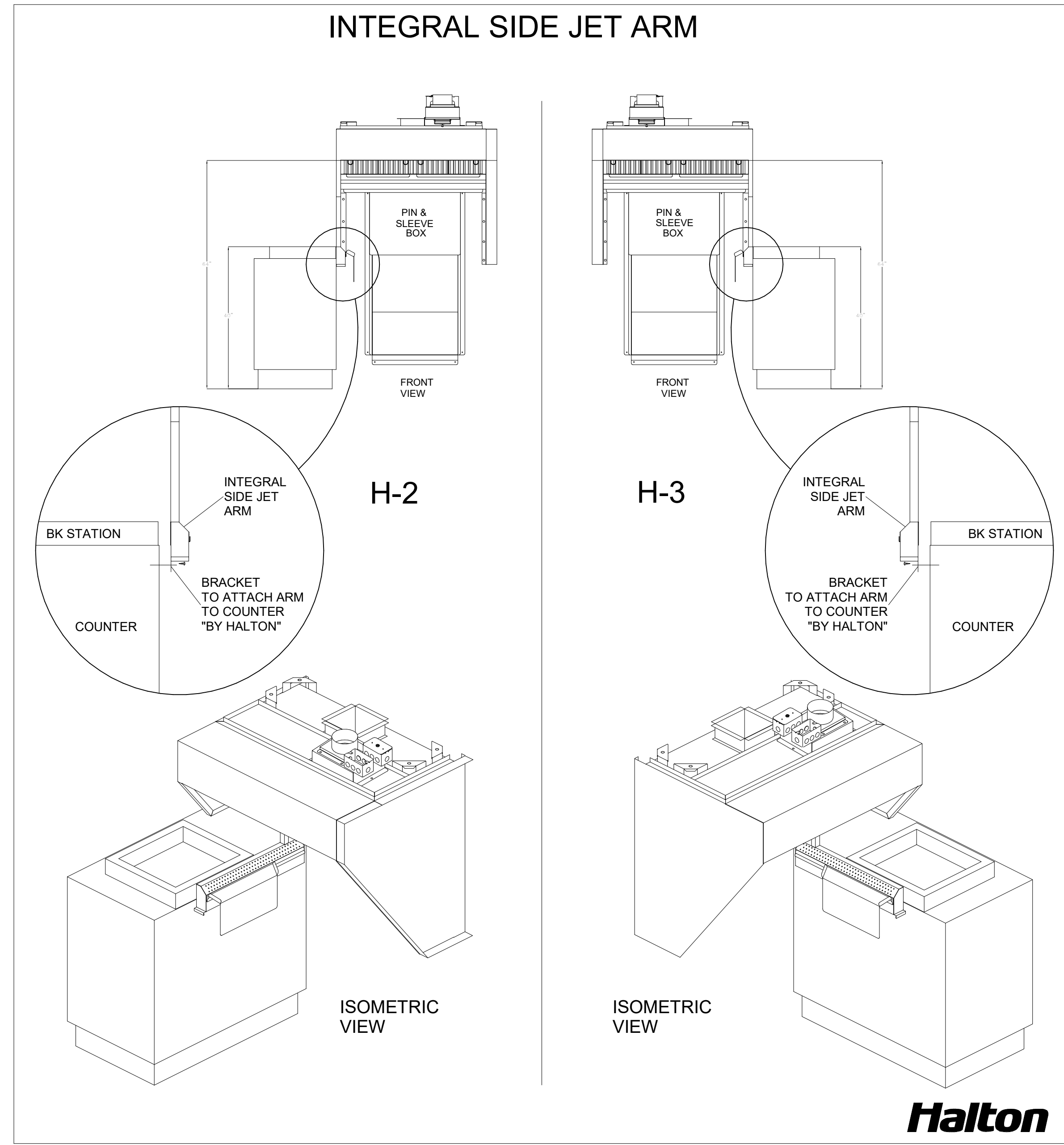
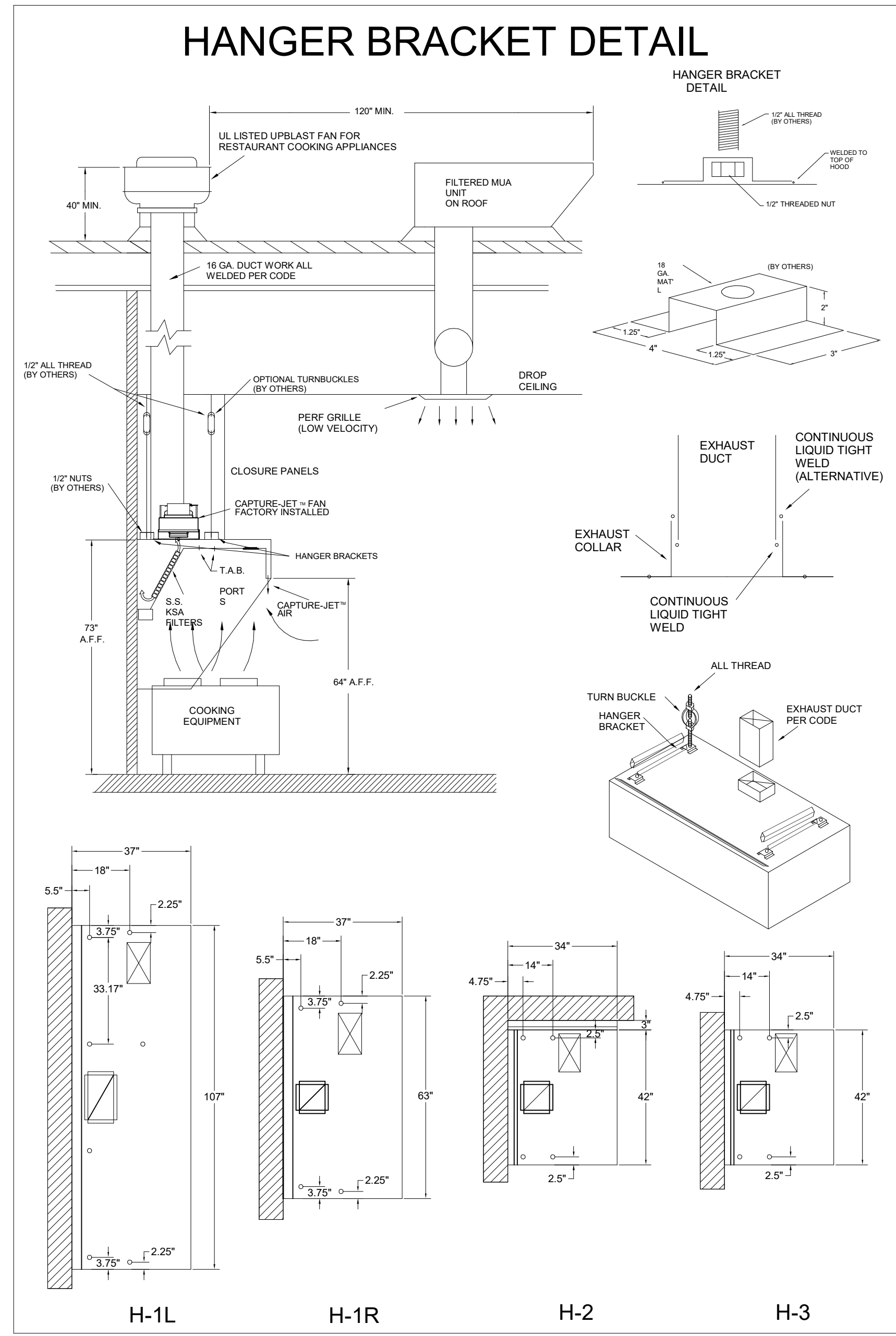
LOCATION: -- DATE: 05.23.24

DRAWN BY: SKK SCALE: NOT TO SCALE

DRAWING No.: U22-606-01

SHEET No.: MH-1.1

Halton



FOR REFERENCE ONLY

NSF Halton CONFORMS TO UL STD UL STD 710 CERTIFIED TO ULC STD 5846

INTERTEK 3012225

HALTON COMPANY, 101 INDUSTRIAL DR., SCOTTSVILLE, KY 42164

MODEL NO. SERIAL NO. ITEM NO.
KVL-C-IC

GENERAL REQUIREMENTS
FILTER TYPE EXHAUST HOOD FOR COMMERCIAL AND INSTITUTIONAL KITCHENS
THE FAN CIRCUIT IS RATED FOR 120V, 15A, 60HZ.
THE LIGHTING CIRCUIT IS RATED FOR 120V, 15A, 60HZ.
THE HOOD HAS BEEN CERTIFIED BY ETL FOR 6" BACH CLEARANCE TO COMBUSTIBLE MATERIALS (TOP, SIDES, FRONT AND REAR) IN COMPLIANCE WITH UL710 WITH CONSIDERATION TO NFPA 96.
REPLACE FILTERS ONLY WITH UL CLASSIFIED FILTER TYPE OF THE SAME MODEL AND MANUFACTURER.
SUITABLE FOR USE TO MEDIUM DUTY COOKING APPLIANCES.

DUTY LEVEL	MINIMUM OVERHANG		DISTANCE BETWEEN FRONT EDGE OF HOOD AND COOKING SURFACE, IN.		MIN. EXHAUST DUCT HOOD LENGTH
	FRONT, IN.	SIDE, IN.	MIN.	MAX.	
MEDIUM	6"	0"	20"	30"	121"
MEDIUM	6"	0"	20"	30"	106"
MEDIUM	6"	0"	20"	30"	120"
HEAVY	9"	2"	20"	25"	101"
HEAVY	9"	2"	20"	30"	216"

NET SUPPLY AIR FLOW SHALL ONLY BE SET AT 1.30 IN HOOD

NSF Halton CONFORMS TO UL STD UL STD 710 CERTIFIED TO ULC STD 5846

INTERTEK 3012225

HALTON COMPANY, 101 INDUSTRIAL DR., SCOTTSVILLE, KY 42164

MODEL NO. SERIAL NO. ITEM NO.
KVL-2-IC

GENERAL REQUIREMENTS
FILTER TYPE EXHAUST HOOD FOR COMMERCIAL AND INSTITUTIONAL KITCHENS
THE FAN CIRCUIT IS RATED FOR 120V, 15A, 60HZ.
THE LIGHTING CIRCUIT IS RATED FOR 120V, 15A, 60HZ.
THE HOOD HAS BEEN CERTIFIED BY ETL FOR 6" BACH CLEARANCE TO COMBUSTIBLE MATERIALS (TOP, SIDES, FRONT AND REAR) IN COMPLIANCE WITH UL710 WITH CONSIDERATION TO NFPA 96.
REPLACE FILTERS ONLY WITH UL CLASSIFIED FILTER TYPE OF THE SAME MODEL AND MANUFACTURER.
SUITABLE FOR USE TO HEAVY DUTY COOKING APPLIANCES.

DUTY LEVEL	MINIMUM OVERHANG		DISTANCE BETWEEN FRONT EDGE OF HOOD AND COOKING SURFACE, IN.		MIN. EXHAUST DUCT HOOD LENGTH
	FRONT, IN.	SIDE, IN.	MIN.	MAX.	
MEDIUM	6"	0"	20"	30"	121"
MEDIUM	6"	0"	20"	30"	106"
MEDIUM	6"	0"	20"	30"	120"
HEAVY	9"	2"	20"	25"	101"
HEAVY	9"	2"	20"	30"	216"

NET SUPPLY AIR FLOW SHALL ONLY BE SET AT 2.06 IN HOOD

THIS DRAWING MUST BE CHECKED, SIGNED AND RETURNED TO THE APPROPRIATE FACTORY. PLEASE VERIFY THE FOLLOWING:
1. ALL DIMENSIONAL INFORMATION, MOUNTING POSITIONS
2. THE LOCATION AND TYPE OF COOKING EQUIPMENT.
NOTE TO APPROVER
ANY CHANGES IN COOKING EQUIPMENT SUCH AS INCREASED ENERGY INPUTS OR EQUIPMENT POSITION MAY AFFECT EXHAUST AIRFLOW. HALTON MUST BE NOTIFIED IF ANY OF THESE CHANGES OCCUR. A RECALCULATION EXHAUST AIRFLOW MAY BE REQUIRED.

UL LISTED
NSF
ETL
ULC

WEBSITE: www.halton.com

HALTON CO. (USA)
101 INDUSTRIAL DRIVE
SCOTTSVILLE, KY 42164
1-270-237-5800

DATE: 06.27.23
SKK

DATE: 08.28.23
SKK

DATE: 02.02.24
SKK

DATE: 05.16.24
SKK

DATE: 07.26.24
SKK

REVISION DESCRIPTION

CREATED HOOD BLOCKS

SHEET LAYOUT

NO CHANGE

ADDED GREASE CUPS

ADDED 1.5 GAL TANK TO ANSUL SYSTEM

PROJECT: CHICK-FIL-A P14 NAME

LOCATION: --

DRAWN BY: SKK

DATE: 05.23.24

SCALE: NOT TO SCALE

DRAWING NO.: U22-606-02

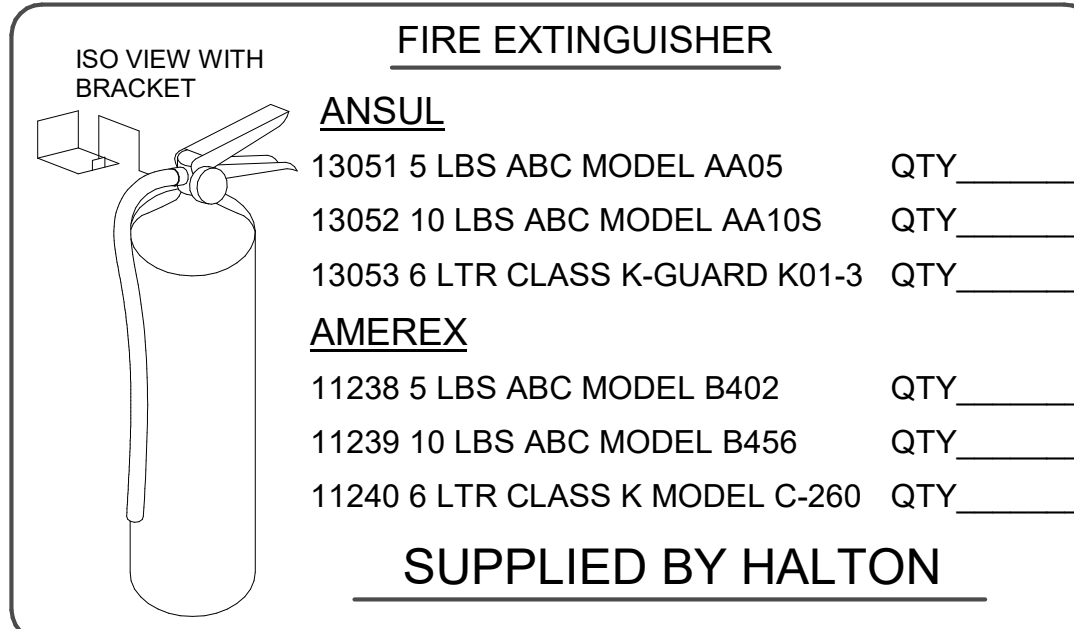
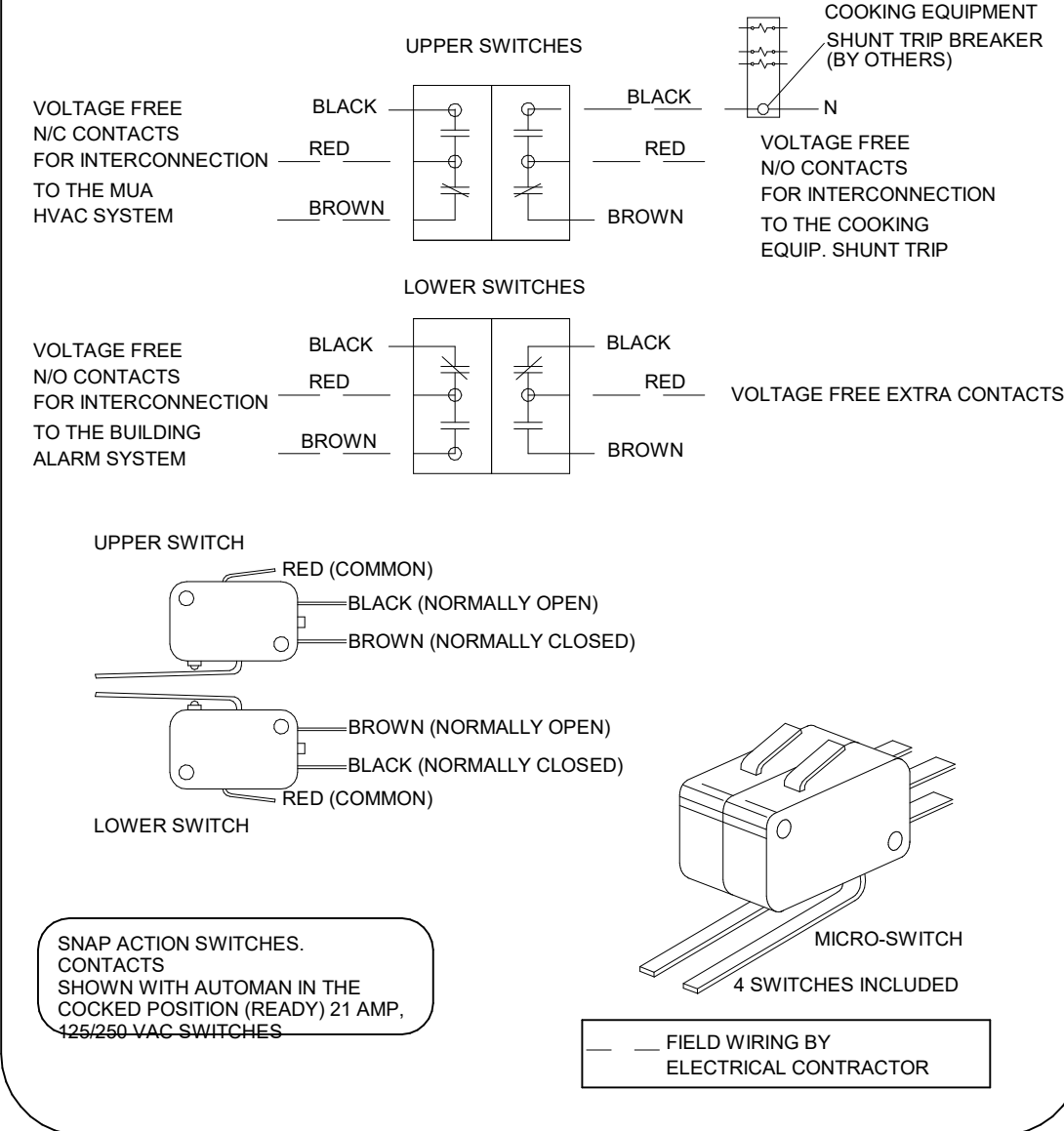
SHEET NO.: MH-1.2

APPROVED BY: [Signature]

DATE: [Blank]

Halton

ANSUL MICROSWITCH DETAIL



NOTE:
 FIRE SYSTEM TYPE TO BE DETERMINED AT TIME OF ORDER RELEASE.

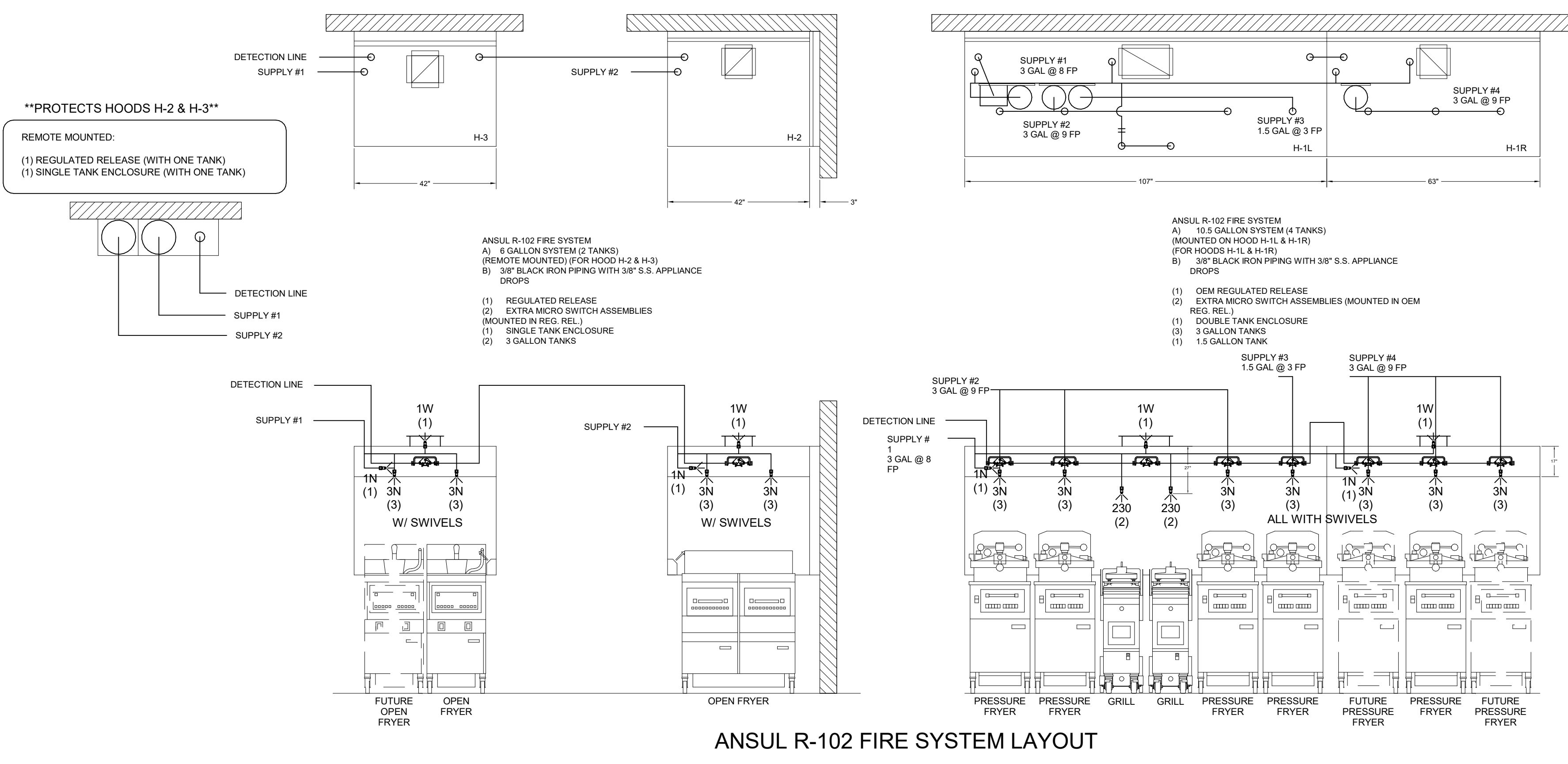
ANSUL

FUSIBLE LINK RATINGS
 ITEM TEMP
 OPEN FRYERS 450°
 2 BURNER / FLAT TOP 450°
 PRESSURE FRYERS 450°
 GRILL 450°
 EXHAUST COLLARS 450°
 ANSUL R-102 FIRE SYSTEM NOTES
 FOUR TANK SYSTEM MOUNTED ON TOP OF H-1L/H-1R
 MAXIMUM FLOW POINTS = 38
 ANSUL R-102 FIRE SYSTEM NOTES
 TWO TANK SYSTEM REMOTE MOUNTED
 MAXIMUM FLOW POINTS = 22

ITEM	PART #	QTY	DESCRIPTION	FLOW PTS (TOTAL)
1W	10023	4	DUCT NOZZLES	4
1N	10022	4	PLENUM NOZZLES	4
230	10025	2	APPLIANCE NOZZLES	4
3N	10021	11	APPLIANCE NOZZLES	33
TOTAL FLOW POINTS				45
QTY		DESCRIPTION		
10035	10	DETECTORS W/ FUSIBLE LINKS		
10046	1	OEM REGULATED RELEASE W/ DOUBLE POLE MICRO SWITCH		
10033	1	REGULATED RELEASE W/ DOUBLE POLE MICRO SWITCH		
10333	5	3 GALLON TANKS		
10682	1	1.5 GALLON TANK		
10047	1	DOUBLE TANK ENCLOSURE		
10044	1	SINGLE TANK ENCLOSURE		
10040	2	REMOTE PULL STATION		
10065	4	DOUBLE TANK NITROGEN CARTRIDGE		
11128	5	3 GALLON ANSULEX CONTAINER		
13459	1	1.5 GALLON ANSULEX CONTAINER		

ANSUL R-102 FIRE SYSTEM
 UL LISTED PER STD LATEST STD 300
 1. FINAL INSTALLATION IS TO BE MADE IN ACCORDANCE WITH ALL APPLICABLE CODES
 2. ALL ELECTRICAL COMPONENTS FOR EQUIPMENT SHUT DOWN TO BE PROVIDED BY THE ELECTRICIAN. MICRO-SWITCH INSTALLED IN REGULATED RELEASE BY ANSUL INSTALLER
 3. REMOTE PULL STATION LOCATED PER MECHANICAL DRAWINGS

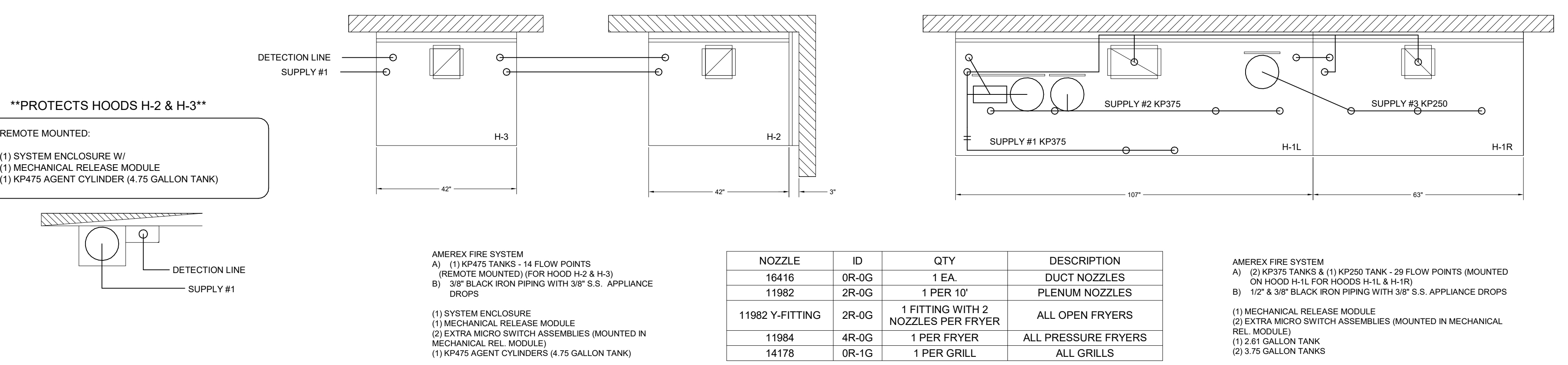
FOR REFERENCE ONLY



1/2" BLACK IRON SUPPLY LINE REQ'D FROM TANK TO FIRST BRANCH LINE FOR 475 TANKS ONLY!

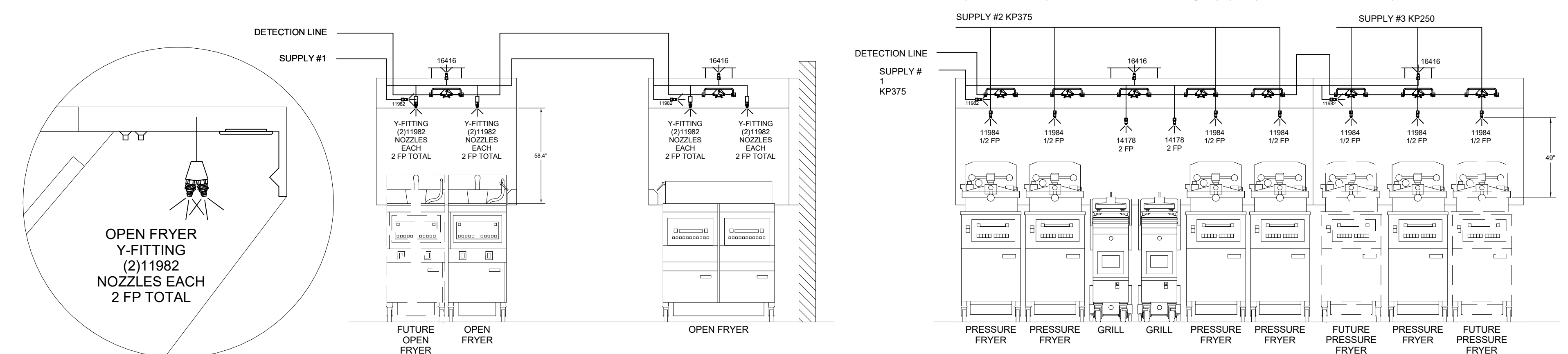
AMEREX

FUSIBLE LINK RATINGS
 ITEM TEMP
 OPEN FRYERS 450°
 2 BURNER / FLAT TOP 450°
 PRESSURE FRYERS 450°
 GRILL 450°
 EXHAUST COLLARS 450°
 AMEREX FIRE SYSTEM NOTES
 (2) KP375 & (1) KP250 TANK SYSTEM MOUNTED ON TOP OF (H-1L)
 MAXIMUM FLOW POINTS = 29
 AMEREX FIRE SYSTEM NOTES
 (1) KP475 TANK SYSTEM REMOTE MOUNTED
 MAXIMUM FLOW POINTS = 14



NOZZLE	ID	QTY	DESCRIPTION
16416	0R-0G	1 EA	DUCT NOZZLES
11982	2R-0G	1 PER 10'	PLENUM NOZZLES
11982	Y-FITTING	1 FITTING WITH 2 NOZZLES PER FRYER	ALL OPEN FRYERS
11984	4R-0G	1 PER FRYER	ALL PRESSURE FRYERS
14178	0R-1G	1 PER GRILL	ALL GRILLS

PRESSURE FRYER AND GRILL NOZZLES WITH SWIVELS ONLY



ITEM	QTY	DESCRIPTION	FLOW PTS (TOTAL)
16416	4	DUCT NOZZLES	4
11982	4	PLENUM NOZZLES	4
11982	4	APPLIANCE NOZZLES	8
14178	2	APPLIANCE NOZZLES	4
11984	7	APPLIANCE NOZZLES	3.5
TOTAL FLOW POINTS			23.5
ITEM	QTY	DESCRIPTION	
12508-P001	10	DETECTORS BRACKET ASSEMBLY	
26948	1	KP250 AGENT CYLINDER	
13334	2	KP375 AGENT CYLINDER	
17379	1	KP475 AGENT CYLINDER	
18001	1	MECHANICAL RELEASE MODULE WITH ENCLOSURE WITH DOUBLE POLE MICRO SWITCH	
11977	1	MECHANICAL RELEASE MODULE WITHOUT ENCLOSURE WITH DOUBLE POLE MICRO SWITCH	
21481	2	REMOTE MANUAL PULL STATION	

AMEREX FIRE SYSTEM
 UL LISTED PER STD LATEST STD 300
 1. FINAL INSTALLATION IS TO BE MADE IN ACCORDANCE WITH ALL APPLICABLE CODES
 2. ALL ELECTRICAL COMPONENTS FOR EQUIPMENT SHUT DOWN TO BE PROVIDED BY THE ELECTRICIAN. MICRO-SWITCH INSTALLED IN REGULATED RELEASE BY AMEREX INSTALLER
 3. REMOTE PULL STATION LOCATED PER MECHANICAL DRAWINGS

THIS DRAWING MUST BE CHECKED, SIGNED AND RETURNED TO THE APPROPRIATE FACTORY. PLEASE VERIFY THE FOLLOWING:
 1. ALL DIMENSIONAL INFORMATION, MOUNTING POSITIONS
 2. THE LOCATION AND TYPE OF COOKING EQUIPMENT.
 NOTE TO APPROVER:
 ANY CHANGES IN COOKING EQUIPMENT SUCH AS INCREASED ENERGY INPUTS OR EQUIPMENT POSITION MAY AFFECT EXHAUST AIRFLOW. HALTON MUST BE NOTIFIED IF ANY OF THESE CHANGES OCCUR. A RECALCULATION EXHAUST AIRFLOW MAY BE REQUIRED.
 REVISE AND RESUBMIT
 APPROVED FOR FABRICATION
 WITH NO CHANGES
 WITH CHANGES AS NOTED

APPROVED BY: _____ DATE: _____

MAIL APPROVED DRAWINGS TO APPROPRIATE FACTORY BELOW:
 WEBSITE: www.halton.com
HALTON CO. (USA)
 101 INDUSTRIAL DRIVE
 SCOTTSVILLE, KY 42164
 1-270-237-5800

HALTON CO. (CANADA)
 1021 BREVIK PLACE
 MISSISSAUGA, ON L4W 3R7
 1-905-624-0301

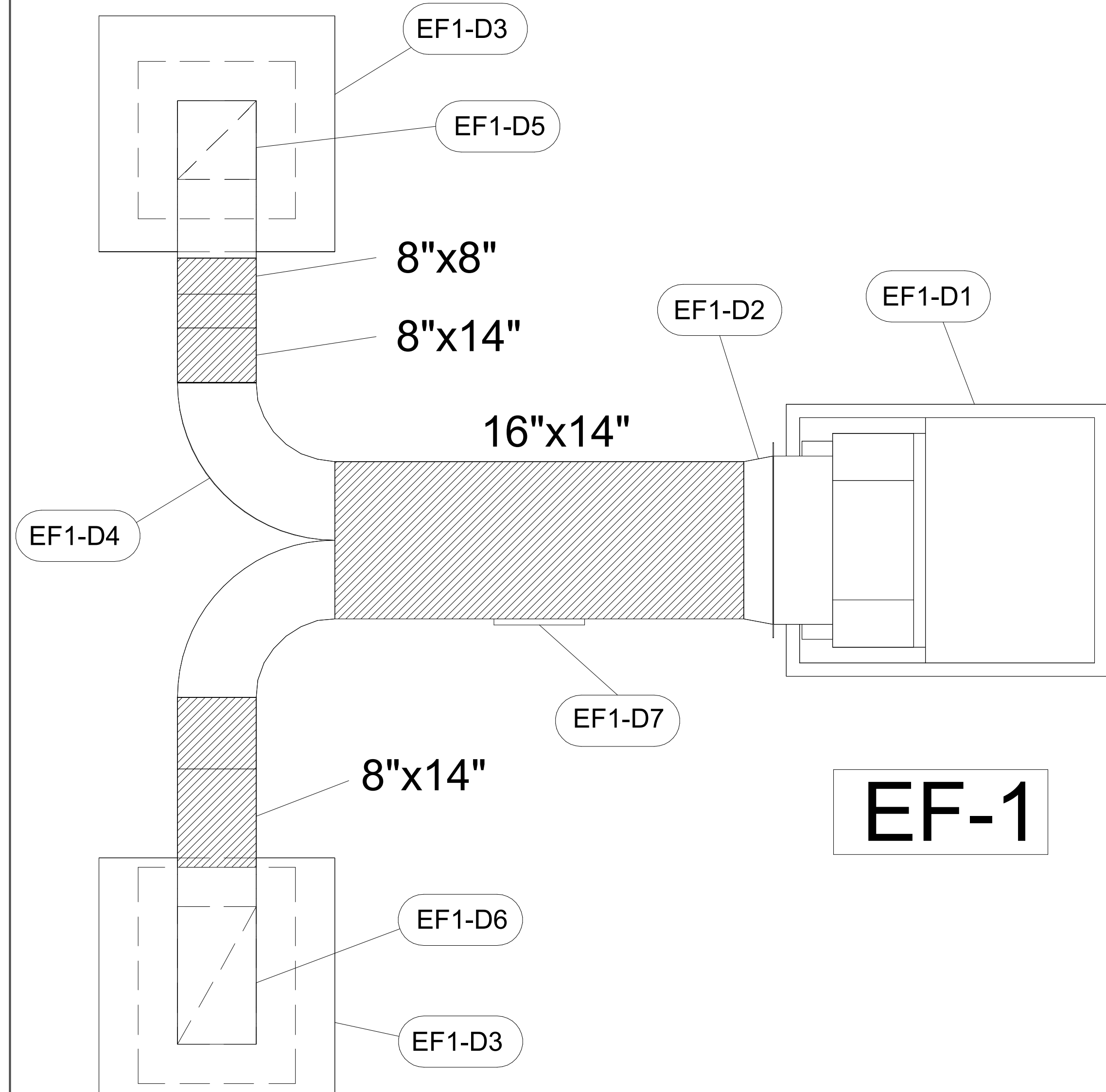
PROJECT: CHICK-FIL-A P14 NAME
 DRAWING No.: U22-606-03
 SHEET NO.: MH-1.3

LOCATION: -
 DRAWN BY: SKK
 SCALE: NOT TO SCALE
 DATE: 05.23.24

REVISION DESCRIPTION
 REV. 1 CREATED HOOD BLOCKS
 REV. 2 SHEET LAYOUT
 REV. 3 NO CHANGE
 REV. 4 ADDED GREASE CUPS
 REV. 5 ADDED 1.5 GAL TANK TO ANSUL SYSTEM

DATE: 06.27.23
 SKK
 DATE: 08.28.23
 SKK
 DATE: 02.02.24
 SKK
 DATE: 05.16.24
 SKK
 DATE: 07.26.24
 SKK

Halton



EF-1

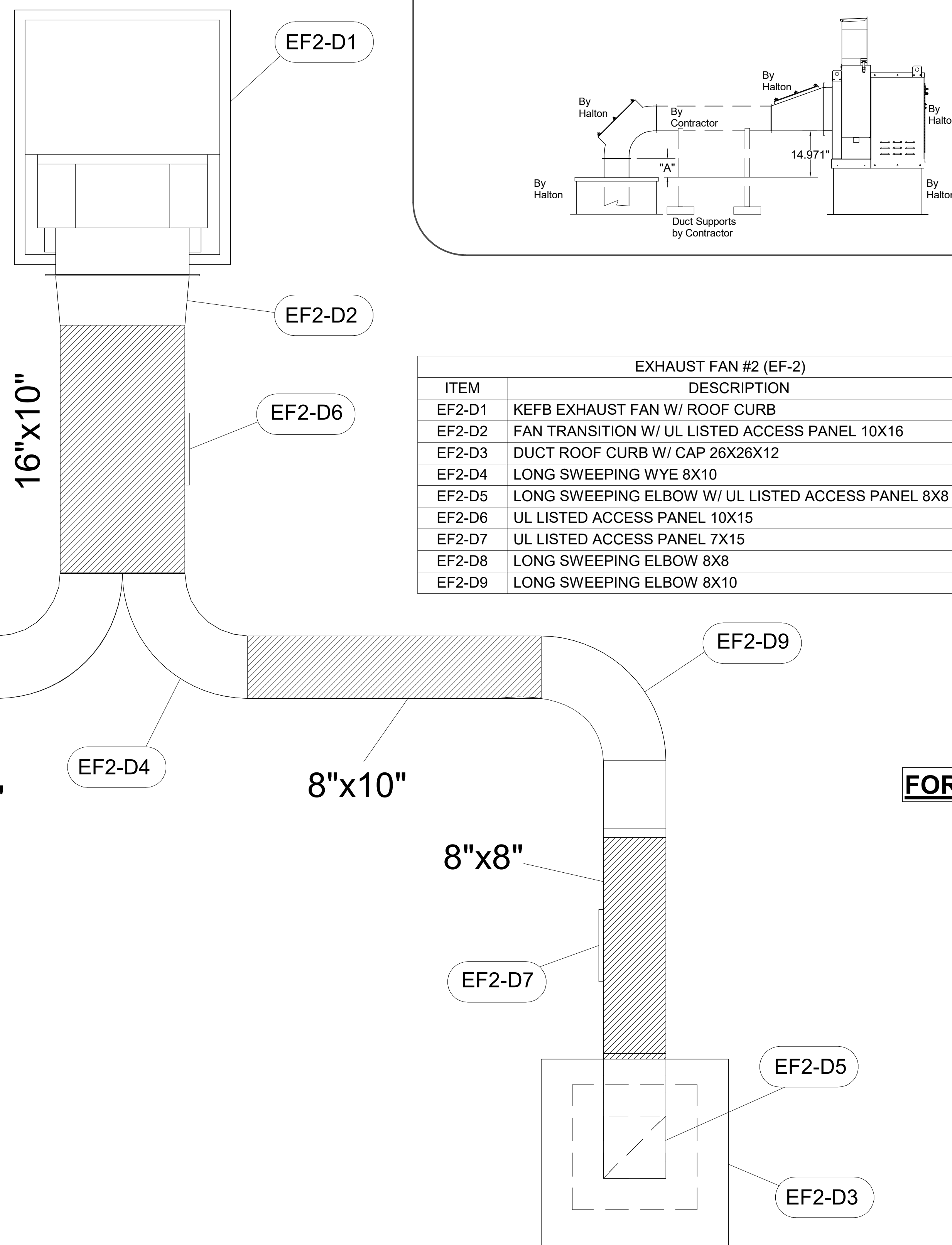
EXHAUST FAN #1 (EF-1)		
ITEM	DESCRIPTION	QTY
EF1-D1	KEFB EXHAUST FAN W/ ROOF CURB	1
EF1-D2	FAN TRANSITION W/ UL LISTED ACCESS PANEL 14X16	1
EF1-D3	DUCT ROOF CURB W/ CAP 26X26X12	2
EF1-D4	LONG SWEEPING STRAIGHT WYE 14X8	1
EF1-D5	LONG SWEEPING ELBOW W/ UL LISTED ACCESS PANEL 8X8	1
EF1-D6	LONG SWEEPING ELBOW W/ UL LISTED ACCESS PANEL 14X8	1
EF1-D7	UL LISTED ACCESS PANEL 10X15	1

ALL DUCTS AND FITTINGS DEPICTED BY HATCH AREAS ARE BY HVAC CONTRACTOR.

-CONTACT HALTON CUSTOMER SERVICE FOR HALTON PROVIDED ITEMS. ONLY DUCT SECTIONS SPECIFIED BY NUMBERS AND SHOWN IN THE ABOVE CHART ARE PROVIDED BY HALTON

-ALL OTHER DUCTS AND FITTINGS BY HVAC CONTRACTOR. DUCT SECTIONS PROVIDED BY HVAC CONTRACTOR ARE SHOWN IN ORDER TO DEPICT TOTAL SYSTEM DESIGN. THE UL LISTED ACCESS PANELS PROVIDED BY HALTON MUST BE INSTALLED IN DUCT SECTIONS NOT PROVIDED BY HALTON BY HVAC CONTRACTOR.

EF-2



EXHAUST FAN #2 (EF-2)		
ITEM	DESCRIPTION	QTY
EF2-D1	KEFB EXHAUST FAN W/ ROOF CURB	1
EF2-D2	FAN TRANSITION W/ UL LISTED ACCESS PANEL 10X16	1
EF2-D3	DUCT ROOF CURB W/ CAP 26X26X12	2
EF2-D4	LONG SWEEPING WYE 8X10	1
EF2-D5	LONG SWEEPING ELBOW W/ UL LISTED ACCESS PANEL 8X8	2
EF2-D6	UL LISTED ACCESS PANEL 10X15	1
EF2-D7	UL LISTED ACCESS PANEL 7X15	2
EF2-D8	LONG SWEEPING ELBOW 8X8	1
EF2-D9	LONG SWEEPING ELBOW 8X10	1

TRANSITION	"H"	"W"	"L"
EF-1 (5)	14	16	17
EF-2 (6)	10	16	17

QTY	"H"	"W"	"A"	Ro	Rc	Ri
EF-1	1	14	8	29	28	21
EF-1	1	8	8	17	16	12
EF-2	2	8	8	17	16	12

"W"	"H"	Wo	Ro	Rc	Ri	"A"	"B"
EF-1	8	14	16	16	12	8	34
EF-2	8	10	16	16	12	8	34

"H"	"W"	"A"	Ro	Rc	Ri
EF-2	8	8	17	16	12
EF-2	8	10	17	16	12

	ELBOW	"A"
EF-1	14X8	8
EF-2	8X8	10

"A" DISTANCE AVAILABLE FOR DUCT SLOPE

CONTRACTOR TO TRIM AS NEEDED TO ACCOMMODATE DUCT SLOPE. ALL ELBOWS WITH ACCESS PANELS. BOTH EF-1 AND EF-2

FOR REFERENCE ONLY

THIS DRAWING MUST BE CHECKED, SIGNED AND RETURNED TO THE APPROPRIATE FACTORY. PLEASE VERIFY THE FOLLOWING:

- ALL DIMENSIONAL INFORMATION, MOUNTING POSITIONS
- THE LOCATION AND TYPE OF COOKING EQUIPMENT.

NOTE TO APPROVER:
ANY CHANGES IN COOKING EQUIPMENT SUCH AS INCREASED ENERGY INPUTS OR EQUIPMENT POSITION MAY AFFECT EXHAUST AIRFLOW. HALTON MUST BE NOTIFIED IF ANY OF THESE CHANGES OCCUR. A RECALCULATION EXHAUST AIRFLOW MAY BE REQUIRED.

REVISION AND RESUBMIT WITH NO CHANGES WITH CHANGES AS NOTED

APPROVED FOR FABRICATION

APPROVED BY: _____ DATE: _____



REV.	DESCRIPTION	DATE
1	CREATED HOOD BLOCKS	06.27.23
2	SHEET LAYOUT	08.28.23
3	NO CHANGE	02.02.24
4	ADDED GREASE CUPS	05.16.24
5	ADDED 1.5 GAL TANK TO ANSUL SYSTEM	07.26.24

MAIL APPROVED DRAWINGS TO APPROPRIATE FACTORY BELOW:

WEBSITE: www.halton.com HALTON CO. (USA) 101 INDUSTRIAL DRIVE SCOTTSDALE, AZ 85257-1664 1-270-237-5800	1021 BREVIK PLACE MISSISSAUGA, ON L4W 3R7 1-905-624-0301
---	--

PROJECT: **CHICK-FIL-A P14 NAME**

LOCATION: -- DATE: 05.23.24

DRAWN BY: SKK SCALE: NOT TO SCALE

DRAWING No.: **U24-672**

SHEET No.: **MH-1.5**

