

HVAC Post-Install Survey

Warning

Site Info	Please don't proceed before you double check that you are at the proper site. You can find the site details below.
-----------	--

Job Site Information

Survey Source	HVAC_Post-Install_Survey_v17
Job Site Address City, State	5421 New Albany Rd W,New Albany,OH,43054
Business name/Franchise	McDonald's
Job Site #	34956
Site ID	IJ-35017-83000-07519-9578
WO #	70745
Date of HVAC Survey	
Technician/Contractor Name	ZY_CONTRACTOR_NAME
Location Check	I hereby confirm that the info above belongs to the site I'm currently in. (If not DO NOT PROCEED and navigate to the proper Work Order email and access the survey from there) Thank You

Post Install Unit Detail

How many units have been replaced at this jobsite?	1
--	---

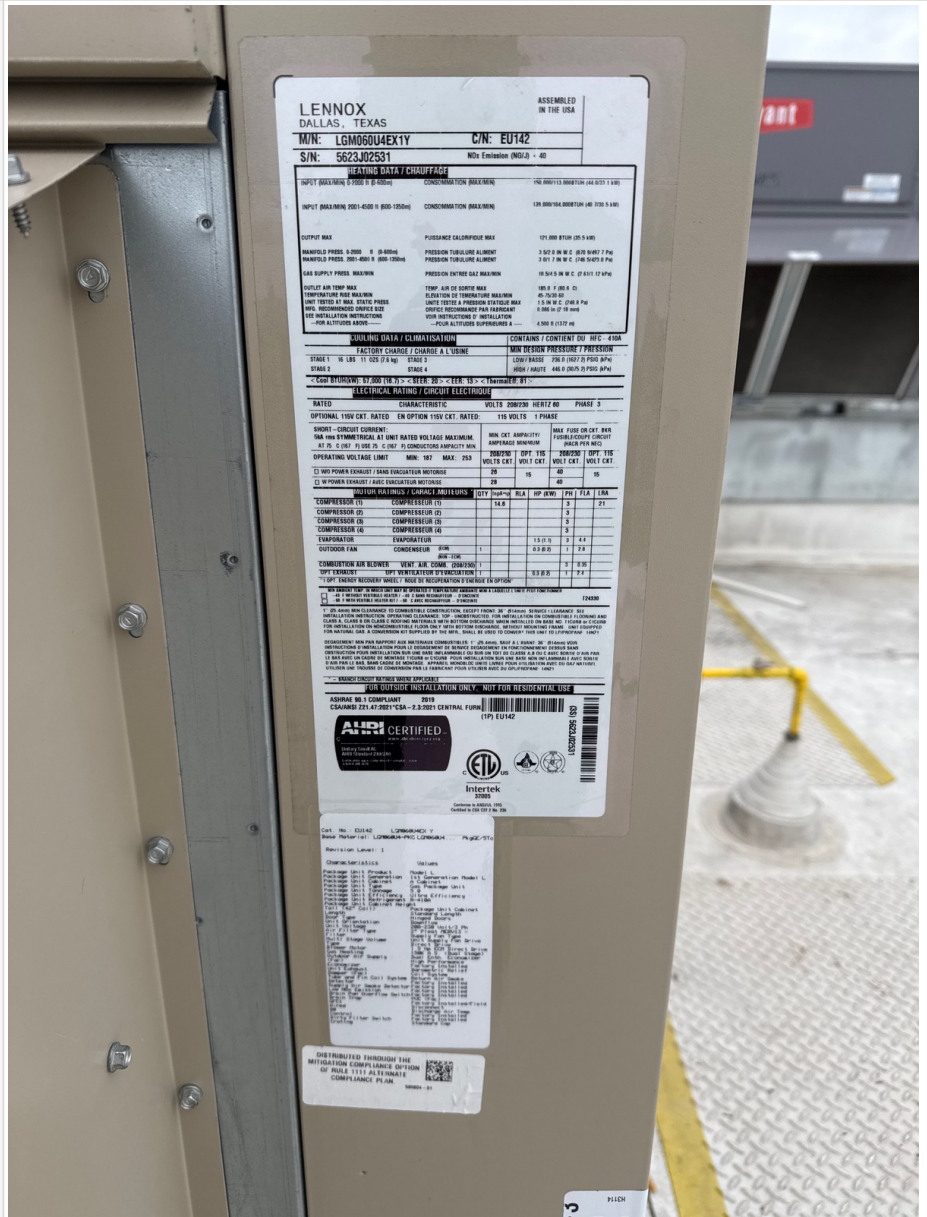
Post-Install Unit Overview #1

Post Install HVAC Unit Details

equipment_type	HVAC
Type of unit?	Packaged Unit
Unit Location	South
Area Served	Kitchen
Manufacturer	LENNOX
Model #	LGM060U4EX1Y
Serial #	5623J02531
Enter the tonnage of the unit	5.00

HVAC Post-Install Survey

Please take a picture of the replaced unit's nameplate



	40.094272, -82.823690	12-19-2024 01:40 PM
Replaced Unit Manufacturer	LENNOX	
Replaced Unit Model	LGM060U4EX1Y	
Replaced Unit Serial Number	5623J02531	
Replaced Unit Tonnage	5.00	
Side pictures instructions:	Provided at least two pictures of the unit from opposite ends. The pictures should show: <ol style="list-style-type: none"> 1. Electrical disconnect and conduit 2. Gas piping 3. Economizer installed 	

HVAC Post-Install Survey

Please take a picture of unit from each side



HVAC Post-Install Survey




HVAC Post-Install Survey



HVAC Post-Install Survey



 40.094285, -82.823724

HVAC Post-Install Survey

Photo of smoke detector to confirm smoke detector has been moved from shipping position



HVAC Post-Install Survey



40.094265, -82.823691

HVAC Post-Install Survey

Photo of each unit secured to curb



 40.094261, -82.823666

HVAC Post-Install Survey

Photo of condensate trap




40.094279, -82.823686

HVAC Post-Install Survey

Photo of ethernet drop



 40.094266, -82.823689


Thermostat pictures instructions:

- Take 2 pictures of the thermostat
1. Take a picture of the wiring to the baseplate
 2. Take a picture of the thermostat installed on the wall

HVAC Post-Install Survey

Please take a picture of the unit's thermostat wiring




 40.094292, -82.823772

HVAC Post-Install Survey

Please take a picture of the unit's thermostat screen showing blue Wi-Fi symbol and physical labeling



 40.094331, -82.823765

Controller pictures instructions:

Take 3 pictures of different controller screens to prove proper configuration. These are to include:

1. Thermostat control (Adaptive TSTAT disabled).
2. Minimum outside air position
3. Fan speed setups

HVAC Post-Install Survey

Add pictures or screenshots of controller configuration screens



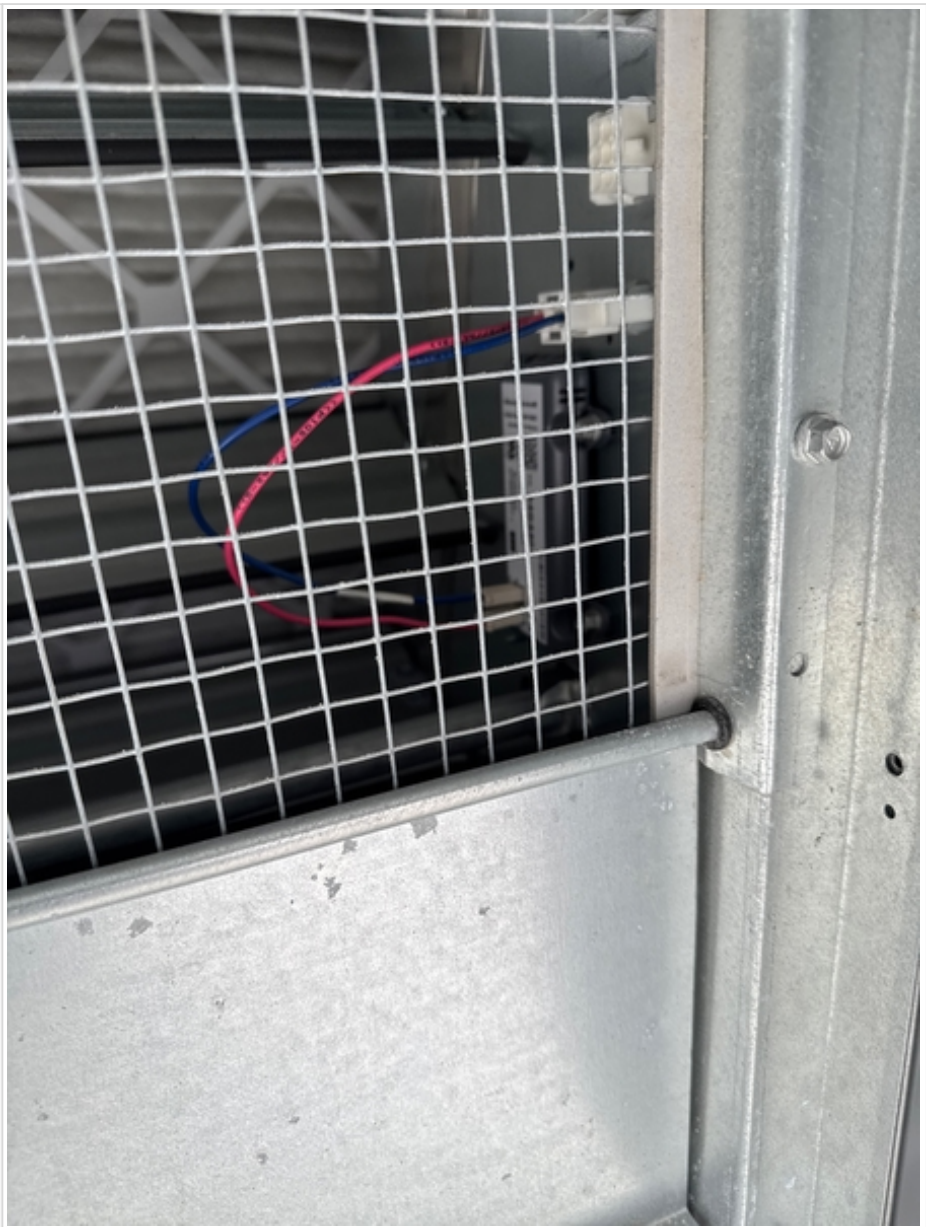

10 40.094259, -82.823688

HVAC Post-Install Survey

Add picture of physical economizer installation and economizer configurations in controller



HVAC Post-Install Survey

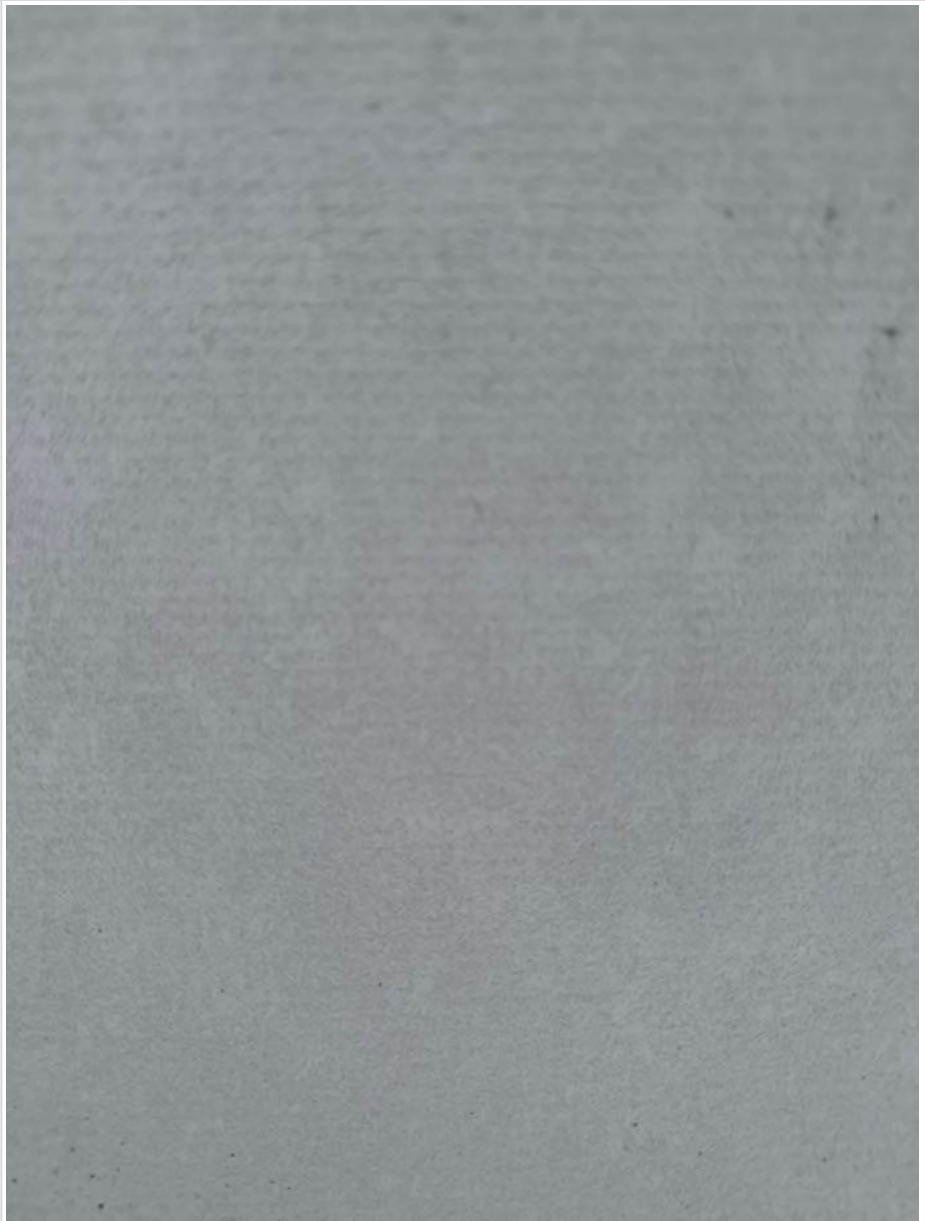
	
	<p> 40.094295, -82.823666</p>
<p>Describe condition of make-up air unit(s) and exhaust fan(s) on-site. Do any appear to need maintenance?</p>	
<p>Pre Start Up Checklist</p>	<p>Pre Start Up Checklist</p>
<p>Verify that all packaging materials have been removed from unit</p>	<p>Yes</p>
<p>Verify installation of outdoor air hood</p>	<p>Yes</p>
<p>Verify installation of flue exhaust and inlet hood (gas units only)</p>	<p>Yes</p>


HVAC Post-Install Survey

Verify that condensate connection is installed per installation instructions	Yes
Verify that all electrical connections and terminals are tight	Yes
Verify gas pressure to unit gas valve is within specified range (gas units only)	Yes
Check gas pipe for leaks (gas units only)	Yes
Check that indoor air filters are clean and in place	Yes
Check that outdoor air inlet screens are in place	Yes
Verify that unit is level	Yes
Check outdoor fan propeller for location in housing/orifice and verify setscrew is tight	Yes
Verify that scroll compressors are rotating in the correct direction	Yes
Verify installation of thermostat/space sensor	Yes
Verify configuration values for electronic controls (based on Control set up checklist)	Yes
Verify that crankcase heaters have been energized for at least 24 hours	Yes
Verify convenience outlet is wired	Yes
Verify transformer tabs incorrect location. Voltage across RC should be between 25-27 Volts	Yes
Verify economizer moves freely without binding on wires or filters rack	Yes
Verify fan and blower set screws tightened and built aligned	Yes

HVAC Post-Install Survey

Please take photos of completed back of manual warranty sheets (note electrical values below can be taken from this)



 40.094265, -82.823614

Start Up - Electrical	Start Up - Electrical
Supply Voltage L1-L2	212.00
Supply Voltage L2-L3	213.00
Supply Voltage L3-L1	214.00
Compressor Amps Speed 1 - 2500 rpm L1	9.00
Compressor Amps Speed 1 - 2500 rpm L2	9.00
Compressor Amps Speed 1 - 2500 rpm L3	9.00

HVAC Post-Install Survey


Compressor Amps Speed 2 - 4500 rpm L1	
Compressor Amps Speed 2 - 4500 rpm L2	
Compressor Amps Speed 2 - 4500 rpm L3	
Electric Heat Amps L1 (if applicable)	
Electric Heat Amps L2 (if applicable)	
Electric Heat Amps L3 (if applicable)	
Supply Fan Amps at Max Speed L1	3.70
Supply Fan Amps at Max Speed L2	
Supply Fan Amps at Max Speed L3	
Start Up Temperatures	Start Up Temperatures
Outdoor Air Temperature F Dry Bulb	35.00
Return Air Temperature F Dry Bulb	70.00
Cooling Supply Air Temperature F Dry Bulb (Ideal differential 20F (+/- 5F))	50.00
Gas Heat Supply Air Temperature F (if applicable) (Ideal differential 20F (+/- 5F))	120.00
Electric Heat Supply Air Temperature F (if applicable) (Ideal differential 20F (+/- 5F))	0.00
Start Up Pressures	Start Up Pressures
Gas Inlet Pressure (in wg)	10.00
Gas Manifold Pressure Stage 1 (in wg)	1.50
Gas Manifold Pressure Stage 2 (in wg)	3.50
Refrigeration Suction Circuit A (psig)	120.00
Refrigeration Suction Circuit A Superheat deg F	12.00
Refrigeration Discharge Circuit A (psig)	250.00
Refrigeration Discharge Circuit A Subcooling deg F	10.00

HVAC Post-Install Survey

Verify refrigerant charge using charging charts	Yes
---	-----

Post-Install Unit Air Flow #1

Section 1

Is the economizer fully operational?	Yes
	 40.094204, -82.823750
Outside air intake damper minimum position: (Target: X> 5%)	4

Post-Install Unit Connectivity #1

RTU Post Install Survey

HVAC Serial Number	5623J02531
--------------------	------------

HVAC Post-Install Survey

Take a photo of the HVAC nameplate



40.094273, -82.823685

12-19-2024 01:52 PM

Area served by HVAC

KITCHEN

HVAC Post-Install Survey

Take a photo of the RTU number (It may be handwritten on the RTU or on a decal/sticker)



	40.094265, -82.823678
Where is the RTU located on site?	ROOF
Type of RTU	Lennox RTU
Other Type of RTU	
Take a photo of the HVAC RTU controller display - showing the MAC Address you entered	
Take a photo of the HVAC RTU controller display - showing the BAUD rate you entered	
Take a photo of the HVAC RTU controller display - showing the BAS Protocol you picked	

HVAC Post-Install Survey

Take a photo of the HVAC RTU controller - showing the BAS terminals wired with 3 wires distinctively colored	
Take a photo of the BACnet router - showing the COM1 terminals with 3 wires distinctively colored	
Take a photo of the BACnet router - showing the Ethernet port's 2 LEDs illuminated	
Take a photo of the BACnet router - showing the power terminals connected to the DC power supply	
Take a photo of the BACnet router - showing the 6 front LEDs illuminated	
Take a photo of the BACnet router - showing the label printed by Budderfly	
Take a photo of the Network Switch in Budderfly's network enclosure - showing the Ethernet port connected to the BACnet router from the other end of the cable	
Take a photo of the ethernet cable plugged into the Lennox Controller	
Take a photo of the ethernet cable plugged into the Budderfly Network Switch	
A Photo of the Lennox Controller after successful connection and the WIFI LED is steady green	
Instruction	The remaining questions require you uploading screenshots from the core controller app. You need screens for the "Network Setup Option" and the following parameters: Network, Device Instance, Control Mode, IP Configuration, Remote Service Access.
Take a screenshot of the core controller app after you pair the RTU successfully	
Take a screenshot of the core controller app (Network Setup) - "Network Setup Option"	
Take a screenshot of the core controller app (Network Setup) - "Network" parameter	
Take a screenshot of the core controller app (Network Setup) - "Device Instance" parameter	
Take a screenshot of the core controller app (Network Setup) - "Control Mode" parameter	

HVAC Post-Install Survey

Take a screenshot of the core controller app (Network Setup) - "IP Configuration" parameter	
Take a screenshot of the core controller app (Network Setup) - "Remote Service Access" parameter	
Instruction	We need clear indication that the cable was run for each HVAC unit. If there are 4 HVAC units then 4 cables are to be run and pics of each cable needs to be included in the survey.
Please provide pics of the Ethernet cable run from the connectivity switch to the HVAC unit(s)	
Please contact the Budderfly Support team at 475-270-4895 with any issues during install and for validating that a proper checkout has been completed.	

Signature

Instruction	Please walk through the work area and explain to the Manager on Duty the work that was performed. Afterward, have the Manager on Duty sign off
Warning	Manager on Duty: Sign off with your full name only after the Budderfly technician has walked you through the work performed.
Date	12-19-2024
MOD/Customer Representative Signature of Approval	JULIE CARTER
	12-19-2024 01:53 PM

HVAC Post-Install Survey

Form Locations

