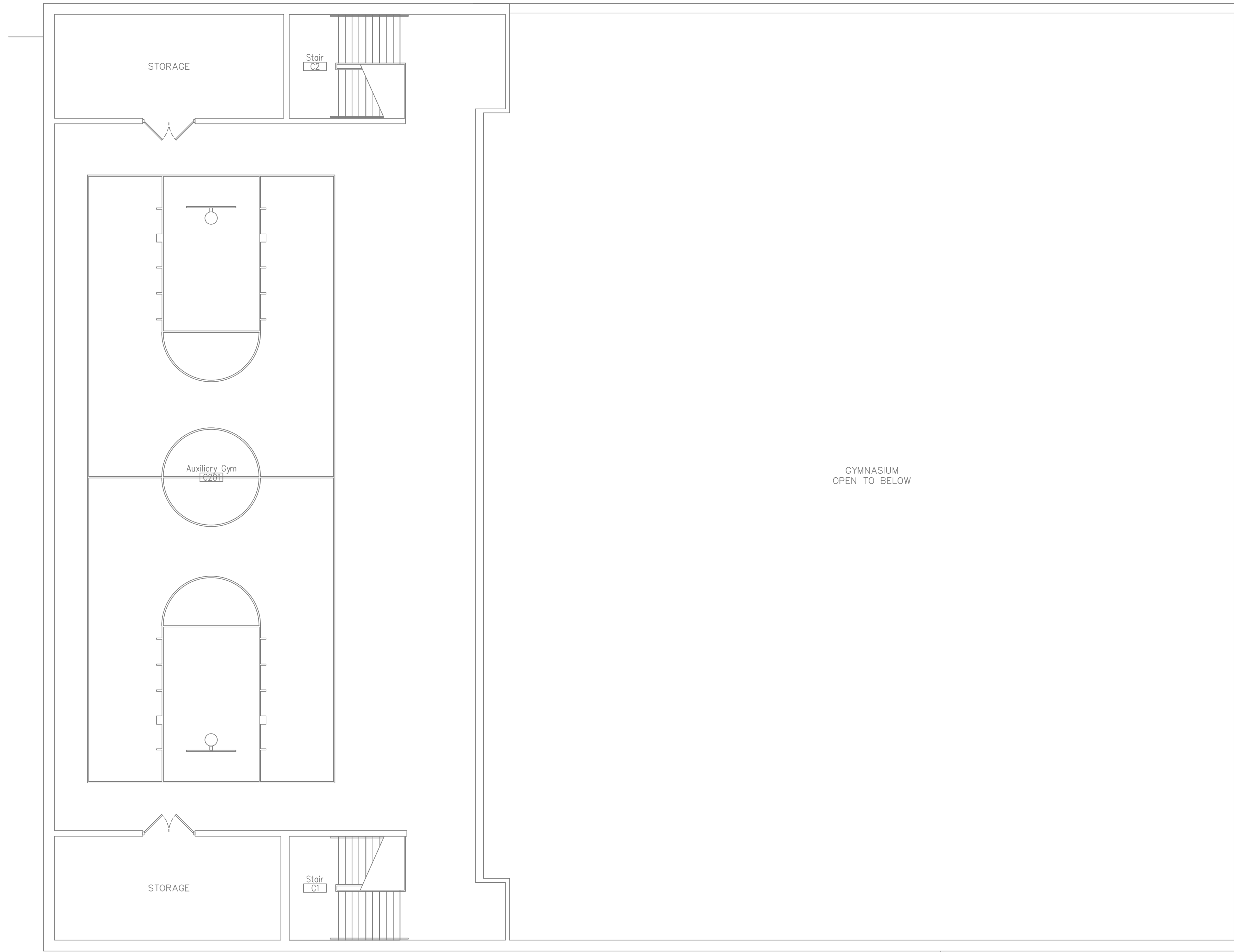
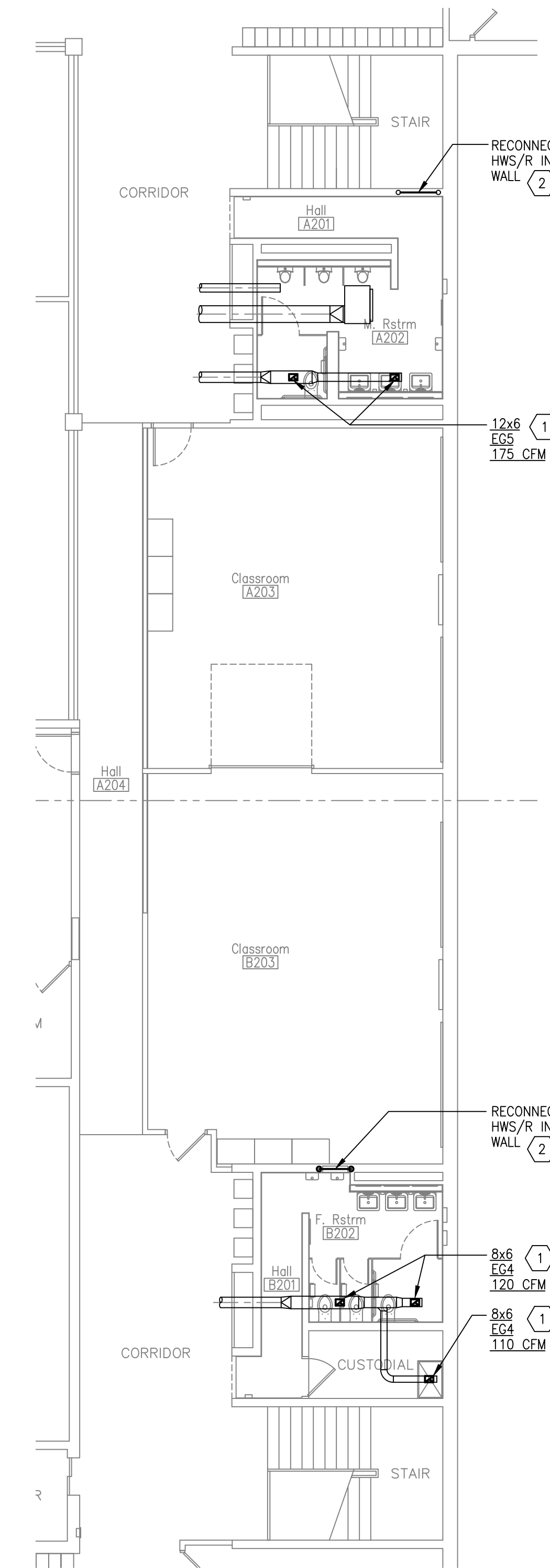


KEYNOTES

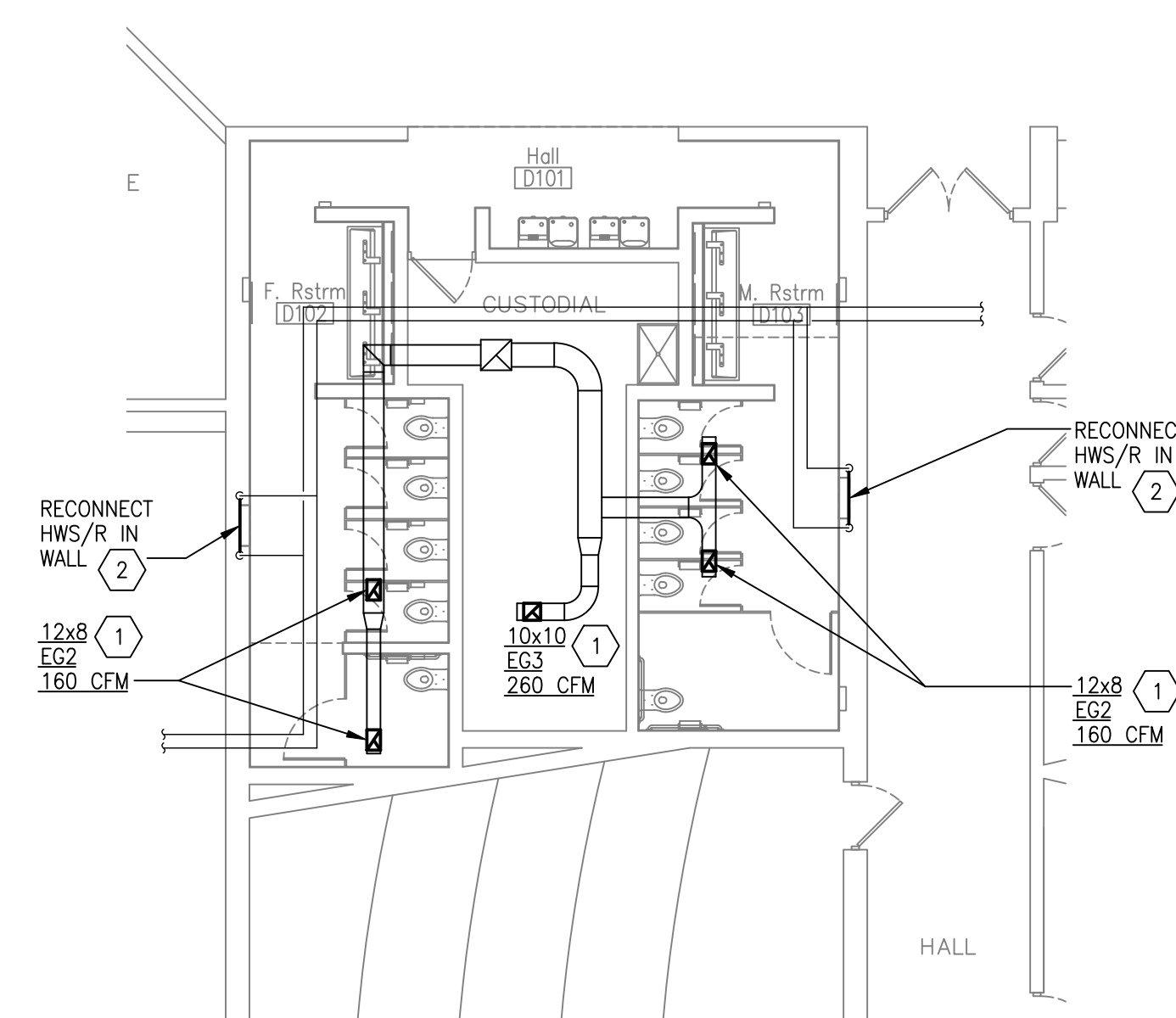
- 1 INSTALL NEW EXHAUST GRILLE IN CEILING. REMOVE CEILING AS REQUIRED TO MAKE CONNECTION. COORDINATE PATCHING OF CEILING WITH GENERAL CONTRACTOR.
- 2 PROVIDE SECTION OF PIPE BETWEEN SUPPLY AND RETURN PIPING BETWEEN REMOVAL POINTS IN WALL TO CREATE PIPING LOOP. PIPING TO BE ENCLOSED IN WALL. COORDINATE WALL COVERING WITH GENERAL CONTRACTOR.



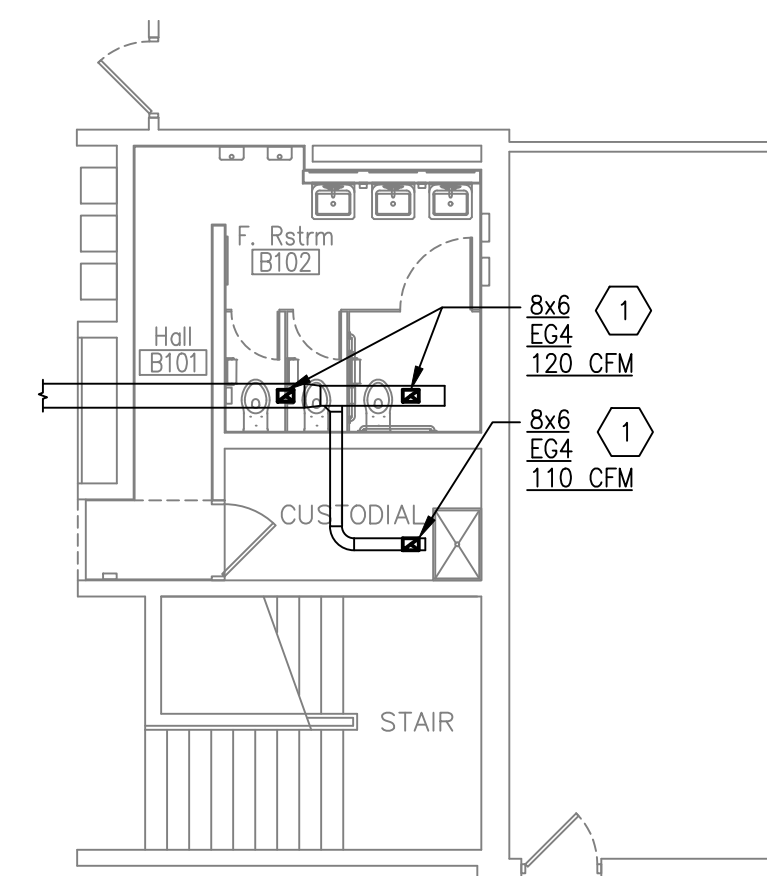
1
2ND FLOOR AREA C
NEW WORK PLAN
1/8"=1'-0"



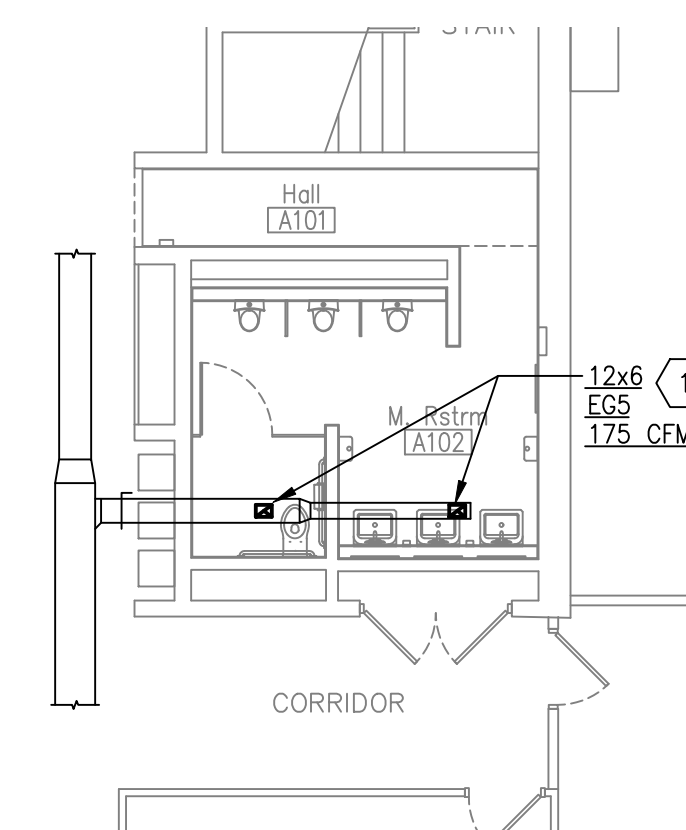
2
2ND FLOOR AREAS A&B
NEW WORK PLAN
1/8"=1'-0"



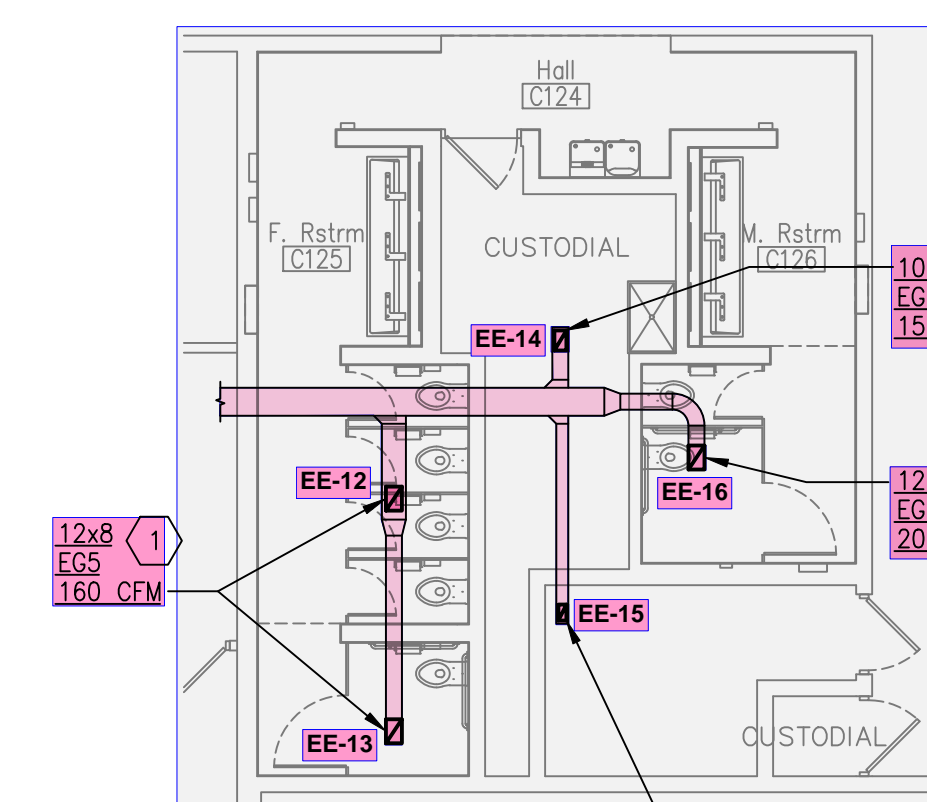
3
1ST FLOOR AREA D
NEW WORK PLAN
1/8"=1'-0"



4
1ST FLOOR AREA B
NEW WORK PLAN
1/8"=1'-0"

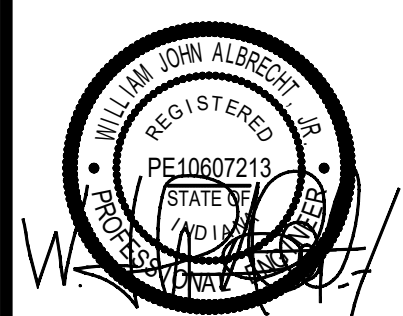


5
1ST FLOOR AREA A
NEW WORK PLAN
1/8"=1'-0"



6
1ST FLOOR AREA C
NEW WORK PLAN
1/8"=1'-0"

DATE	BY	ISSUE/REVISION
5-15-23	CKB	ISSUE/REVISION PERMIT ISSUE



NOTE: CONSULT THE PROJECT MANUAL FOR ALL NOTES AND SPECIFICATIONS. THE CONTRACTOR SHALL BE RESPONSIBLE FOR OBTAINING ALL NECESSARY PERMITS AND APPROVALS. THE CONTRACTOR SHALL BE RESPONSIBLE FOR OBTAINING ALL NECESSARY PERMITS AND APPROVALS. THE CONTRACTOR SHALL BE RESPONSIBLE FOR OBTAINING ALL NECESSARY PERMITS AND APPROVALS.

Perfection Group
 2648 COMMERCE BOULEVARD
 CINCINNATI, OHIO 45241
 COLUMBUS, OHIO 43215
 513.326.2800 FAX
 www.perfectiongroup.com

HVAC FLOOR PLANS
 RIVER VALLEY MIDDLE SCHOOL
 FACILITY IMPROVEMENTS
 2220 VETERANS PKWY
 JEFFERSONVILLE, IN, D. 47130

JOB NO.:
 SCALE: AS NOTED
 DATE: 5-12-23
 DRAWN BY: CKB
 APPROVED BY: CSL
 DRAWING NUMBER:

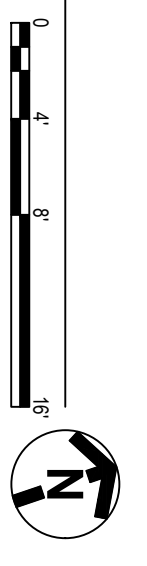
M-1
 REVISION NO.: 0

BA, 2023, GCCS, BIM, Lock, Classroom, Engineering, Design, DWG, Files, VIMS, LOCKER, CLASSROOMS, MECH.dwg, 5/15/2023, 9:32 AM



AREA A
AREA B
AREA C

7 1ST FLOOR AREA C
HVAC PLAN

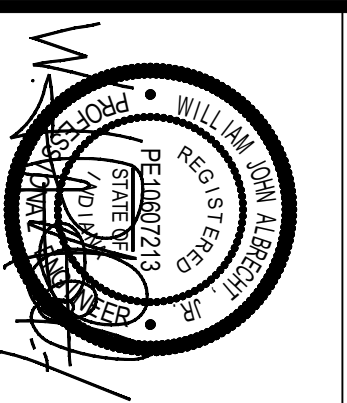


- KEYNOTES**
1. FAN-1 MOUNTED ON GIBB ROOFER IN ROOF. ROUTE DUCTS UP TO RIV GAS PER REQUIRED. CONNECT EXISTING GAS PIPING TO RIV GAS CONNECTION. SEE DETAIL "E" ON SHEET M-4 FOR CONNECTION.
 2. CONNECT SUPPLY AND RETURN DUCTS TO EXISTING DROPS AT DECK PENETRATION.
 3. EXISTING LOW ELEVATION STRUCTURAL BEAM. GENERAL CONTRACTOR TO DETERMINE IF CEILING HEIGHT NEEDS ADJUSTED.
 4. TRANSITION DUCT SIZE TO/FROM HEATING COIL AS REQUIRED.
 5. CONNECT NEW EXHAUST DUCTWORK TO EXISTING AT DECK PENETRATION. TRANSITION AS REQUIRED.
 6. ROUTE DUCT UP THRU DECK BY WAY OF EXISTING PENETRATION. PATCH ALL AROUND DUCTWORK AS REQUIRED TO PROVIDE SOLID DECK AT PENETRATIONS.
 7. FAN TO BE MOUNTED VERTICALLY IN LINE OF DUCTWORK. REFER TO EF-2 INSTALLATION MANUAL AND CONSULT PRESSURE SENSITIVITY/SOUND/LEVELS.
 8. FAN TO BE MOUNTED AS HIGH AS POSSIBLE IN ROOM. FAN TO BE INSTALLED WITHIN 24" OF EXTERIOR WALL PENETRATION. PENETRATION FLASH AS REQUIRED.
 9. MOUNT IN WALL. PROVIDE LINTEL AT BLOCK WALL PENETRATION. FLASH AS REQUIRED. PROVIDE LINTEL CONNECT TO DRYER AS REQUIRED. PROVIDE LINTEL FILTER IN DUCTWORK WITHIN ROOM BOUNDARIES.
 10. CONNECT TO DRYER AS REQUIRED. PROVIDE LINTEL FILTER IN DUCTWORK WITHIN ROOM BOUNDARIES.

HVAC FLOOR PLAN
RIVER VALLEY MIDDLE SCHOOL
FACILITY IMPROVEMENTS
2220 VETERANS PKWY
JEFFERSONVILLE, IND. 47130

Perfection Group
2649 COMMERCE BOULEVARD
CINCINNATI, OHIO 45241
513-772-7545 PHONE
513-326-2380 FAX
www.perfectiongroup.com

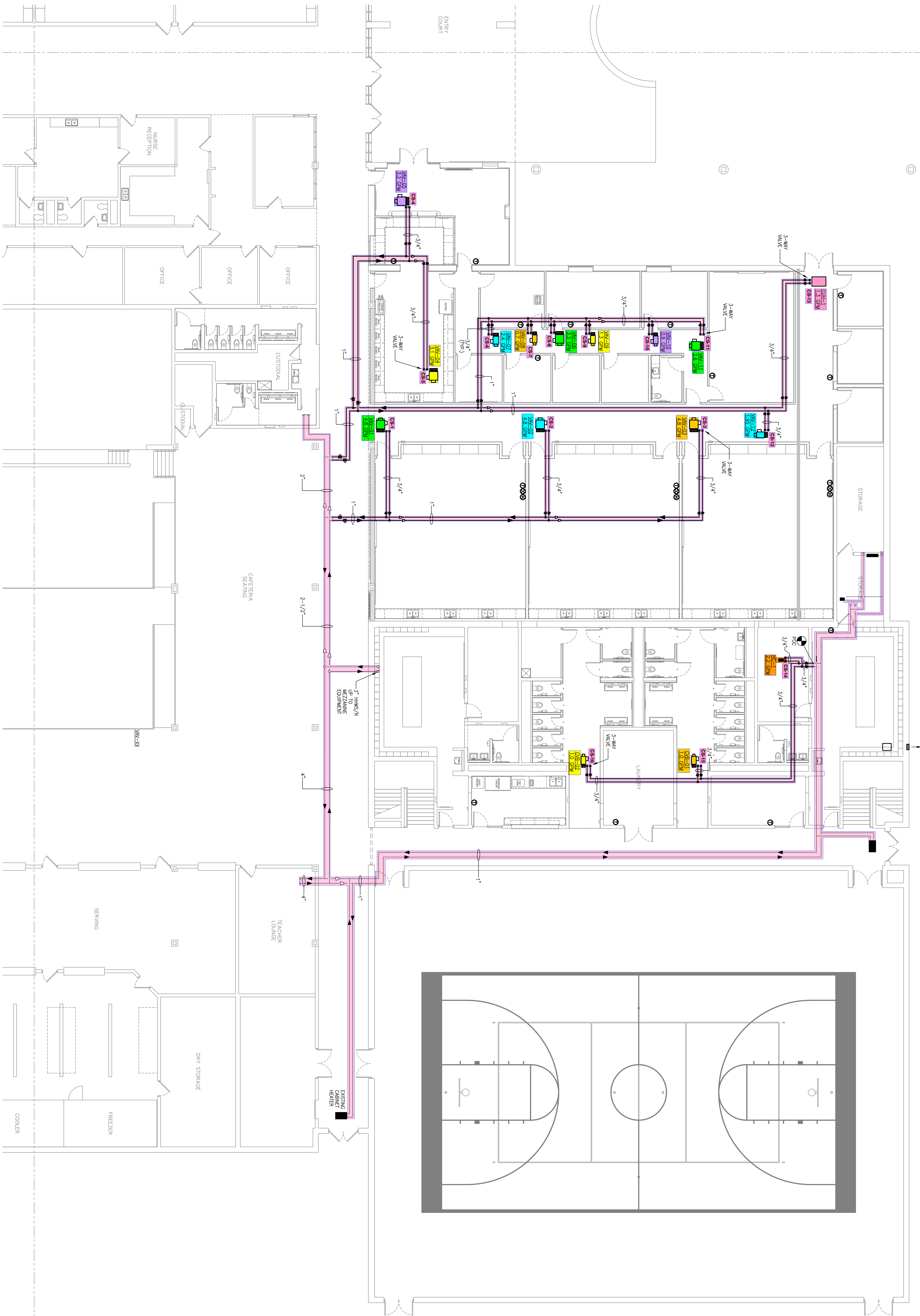
NOTICE: THIS PRINT IS FURNISHED UPON CONDITION THAT IT SHALL NOT BE REPRODUCED, COPIED, REPRODUCED, OR TRANSMITTED IN ANY MANNER OR BY ANY MEANS, WITHOUT THE WRITTEN PERMISSION OF PERFECTION MECHANICAL SERVICES. ANY INFORMATION SHOWN THEREON SHALL BE RELEASED OR DISCLOSED IN WHOLE OR IN PART FOR CONSTRUCTION PURPOSES WITHOUT SAID PERMISSION.



DATE	BY	ISSUE/REVISION

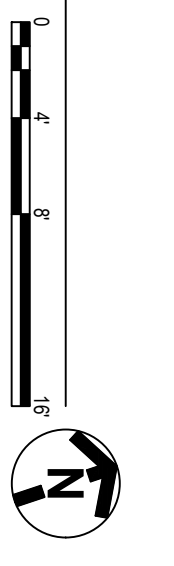
DATE	BY	ISSUE/REVISION
5-15-23	CKB	PERMIT ISSUE

JOB NO.:
SCALE: AS NOTED
DATE: 5-12-23
DRAWN BY: CKB
APPROVED BY: CSL
M-2
REVISION NO.: 0



AREA A
"A"
"C"

8
1ST FLOOR AREA C
PIPING PLAN
18"x10"

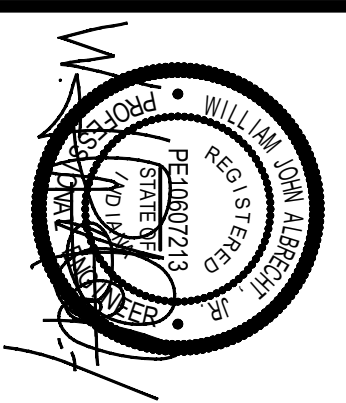


AREA C
AREA D

PIPING FLOOR PLAN
RIVER VALLEY MIDDLE SCHOOL
FACILITY IMPROVEMENTS
2220 VETERANS PKWY
JEFFERSONVILLE, IND. 47130

Perfection Group
2649 COMMERCE BOULEVARD
CINCINNATI, OHIO 45241
513-772-7545 PHONE
513-326-2380 FAX
www.perfectiongroup.com

NOTICE: THIS PRINT IS FURNISHED UPON CONDITION THAT IT SHALL NOT BE REPRODUCED, COPIED, REPRODUCED, OR TRANSMITTED IN ANY FORM OR BY ANY MEANS, ELECTRONIC OR MECHANICAL, INCLUDING PHOTOCOPYING, RECORDING, OR BY ANY INFORMATION STORAGE AND RETRIEVAL SYSTEM, WITHOUT THE WRITTEN PERMISSION OF PERFECTION MECHANICAL SERVICES, AND UPON FURTHER CONDITION THAT NEITHER IT, NOR ANY DATA OR INFORMATION SHOWN THEREON SHALL BE RELEASED OR REPRODUCED, USED, OR DISCLOSED IN WHOLE OR IN PART FOR CONSTRUCTION PURPOSES WITHOUT SAID PERMISSION.



DATE	BY	ISSUE/REVISION

DATE	BY	ISSUE/REVISION
5-15-23	CKB	PERMIT ISSUE

JOB NO.:
SCALE: AS NOTED
DATE: 5-12-23
DRAWN BY: CKB
APPROVED BY: CSL
M-3
REVISION NO.: 0