



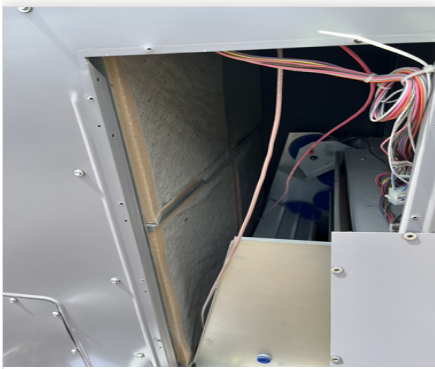
Comfort. Under control.

08-08 FIVE GUYS - BROOKLYN, OH

Project Issue Information

Issue Name : Construction filters are in both RTUs
Description : These filters need to be replaced with final filters
Created By : National TAB **Assigned To :** National TAB - Alec Lewis
Status : Open
Originated Date : 08/08/2022 - Ian Fuller - National TAB

Project Issue File Details



Fuse1T856c23495e004fff880b6fa
7887b3a46.jpeg



Comfort. Under control.

08-08 FIVE GUYS - BROOKLYN, OH

Project Issue Information

Issue Name : EF#1 grease cup not installed

Description : Grease cup is on the roof next to fan just not installed

Created By : National TAB

Assigned To : National TAB - Will Turnbough

Status : Open

Originated Date : 08/08/2022 - Ian Fuller - National TAB

Project Issue File Details



FuselT695f54990d994494a2a1f5
b0e0275edf.jpeg



Comfort. Under control.

08-08 FIVE GUYS - BROOKLYN, OH

Project Issue Information

Issue Name : EF#1 not fully secured to curb

Description : There are no screws to prevent the fan from leaning back on its hinges.

Created By : National TAB

Assigned To : National TAB - Will Turnbough

Status : Open

Originated Date : 08/08/2022 - Ian Fuller - National TAB

Project Issue File Details



FuselT6af2ed6ac4ef4e9abd1482
820924ce52.jpeg



Comfort. Under control.

08-08 FIVE GUYS - BROOKLYN, OH

Project Issue Information

Issue Name : RTU#1 fan motor not starting after power disconnect

Description : RTU#1 was running, power was cut off at disconnect when turned back on motor will not start but the compressor still runs. Belimo board says unoccupied although thermostat says it's in occupied. When test button is pressed down motor is getting power. RTU is currently off.

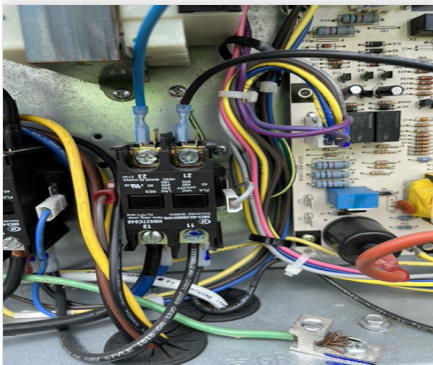
Created By : National TAB

Assigned To : National TAB - Alec Lewis

Status : Open

Originated Date : 08/08/2022 - Ian Fuller - National TAB

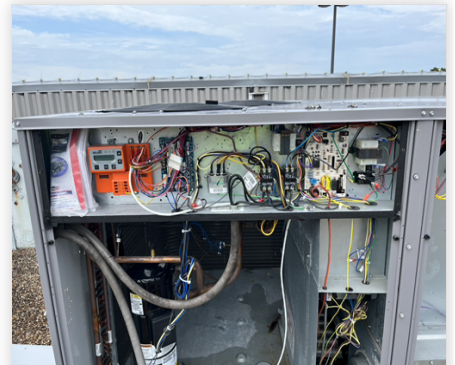
Project Issue File Details



FuseITb637f3588d8b4b768b7ae
fbade0fd323.jpeg



FuseITad55b484797c435f93efc4b
6e13d0245.jpeg



FuseITd3ff68d786b9401c8f7720e
f346ae027.jpeg