



- REVIEWED REVISE AND RESUBMIT
 NOT REVIEWED FURNISH AS CORRECTED

Corrections of comments made on the shop drawings during this review do not relieve the contractor from compliance with the requirements of the drawing specifications. This check is only for review of general conformance with the design concept of the project and general compliance with the information given on the contract documents. The contractor is responsible for confirming and correlating all quantities and dimensions; selecting fabrication processes and techniques of construction; coordination of his/her work with that of all other trades; and performing that work in a safe and satisfactory manner.

Date: 4-4-2023 By: TYLER YOUNG

SEE MECHANICAL ENGINEER'S COMMENTS

**COORDINATE RETURN AND SUPPLY AIR
WITH ARCHITECTURAL AND MECHANICAL
DRAWINGS**



SUBMITTAL DATA

Project: Performance Honda Fairfield R-3362
Bid Category : HVAC
Project No.: A1000983
Construction Manager: Renier Construction
Architect/Engineer: Archall / EM Engineering Group, LTD
Submittal For: RTU and CU
PreCon TAB #: 227
Manufacturer: Carrier

The attached submittal data has been reviewed by TP Mechanical Contractors for compliance with the Architect/Engineer's specifications and plan schedule for this project.

In order to maintain the project schedule, we request that this submittal be returned to TP Mechanical Contractors **within 7 days**.

NOTE: Material cannot be released without Architect/Engineer's approval of submittal.

(Please place stamp of approval here)

| | |
|--|--------------------------|
| _____ | PRODUCT DATA |
| _____ | DRAWINGS |
| 03/28/23 | DATE SUBMITTED |
| _____ | DATE RESUBMITTED |
| T. P. MECHANICAL CONTRACTORS | |
| BY | <u>Jeff Rullman – HG</u> |
| <p>This drawing or brochure has been checked to quality or proper components only. Approval of this drawing or brochure shall not relieve the supplier of responsibility for accuracy or dimensions of full compliance with plans and specifications and purchase order.</p> | |



SUBMITTAL

Project

Performance Honda

Date

Tuesday, March 28, 2023

***This RTU still has a 30 week lead time**

-Coordinate electrical requirements with E.C. prior to installation for rooftop unit.

| SHOP DRAWING REVIEW | |
|---|------------------------|
| <p>This shop drawing review is for general compliance with design concept. No responsibility is assumed by Engineer for correctness of details, dimensions or compliance with contract documents.</p> <p>No substitutions or deviations may be made from Contract Documents without prior written approval by Owner. No approval for substitution/deviation is given or implied by Engineer's shop drawing review. Items other than those specified are installed at Contractor's risk and are subject to removal and replacement at Contractor's own expense regardless of comments made during this review.</p> | |
| <input type="checkbox"/> | Approved |
| <input checked="" type="checkbox"/> | Approved as Noted |
| <input type="checkbox"/> | Furnish Specified Item |
| <input type="checkbox"/> | Rejected - See Remarks |
| <input type="checkbox"/> | Revise & Resubmit |
| <input type="checkbox"/> | Reviewed |
| <p>Corrections or comments made on the shop drawings during this review do not relieve Contractor from compliance with requirements of the Drawings and Specifications. This check is only for review of general conformance with the design concept of the project. The Contractor is responsible for confirming and correlating all quantities and dimensions; selecting fabrication processes and techniques of construction; coordinating this work with that of other trades; and performing this work in a safe and satisfactory manner.</p> | |
| By | Cory Allen |
| Date | 4.3.23 |

Table Of Contents

Project: Performance Honda
Prepared By:

03/28/2023
02:23PM

| | |
|--------------------------|-----------|
| RTU-1 | 3 |
| Unit Report..... | 4 |
| Certified Drawing..... | 5 |
| Performance Summary..... | 11 |
| CU-F-1 | 14 |
| Unit Report..... | 15 |
| Performance Summary..... | 17 |
| System Parameters..... | 17 |
| Electrical Data..... | 17 |
| Acoustic Summary..... | 18 |
| Certified Drawing..... | 19 |

RTU-1

**Tag Cover Sheet
Unit Report
Certified Drawing
Performance Report**

Unit Report For RTU-1

Project: Performance Honda
Prepared By:

03/28/2023
02:23PM

Unit Parameters

Unit Model:.....**48FCEM28AJA6-6F0A0**
 Unit Size:.....**28 (25 Tons)**
 Volts-Phase-Hertz:.....**460-3-60**
 Heating Type:.....**Gas**
 Heat Control:.....**Medium Heat**
 Duct Cfg:.....**Horizontal Supply / Horizontal Return**
 DX Options:.....**Two Stage Cooling/Single Circuit**

Dimensions (ft. in.) & Weight (lb.) ***

Unit Length:.....**11' 9.5"**
 Unit Width:.....**7' 2.375"**
 Unit Height:.....**3' 11.75"**
Total Operating Weight:.....2693 lb

*** Weights and Dimensions are approximate. Weight does not include unit packaging. Approximate dimensions are provided primarily for shipping purposes. For exact dimensions and weights, refer to appropriate product data catalog.

Lines and Filters

Gas Line Size:.....**3/4**
 Condensate Drain Line Size:.....**3/4**
 Return Air Filter Type:.....**Throwaway**
 Return Air Filter Quantity:.....**9**
 Return Air Filter Size:.....**20 x 25 x 2**

Selection includes construction throwaway filter into the base fan curve. This filter is not MERV Rated.

Unit Configuration

High Static Option - Horizontal Models
 Al/Cu - Al/Cu
 Electromechanical Controls w/W7220 Econo Controller
 Enthalpy Economizer w/ Barometric Relief. Vertical and Horizontal Air Flow.
 Standard Packaging

Warranty Information

1-Year parts(std.)
 5-Year compressor parts(std.)
 10-Year heat exchanger - Aluminized(std.)

No optional warranties were selected.

NOTE: Please see Warranty Catalog 500-089 for explanation of policies and ordering methods.

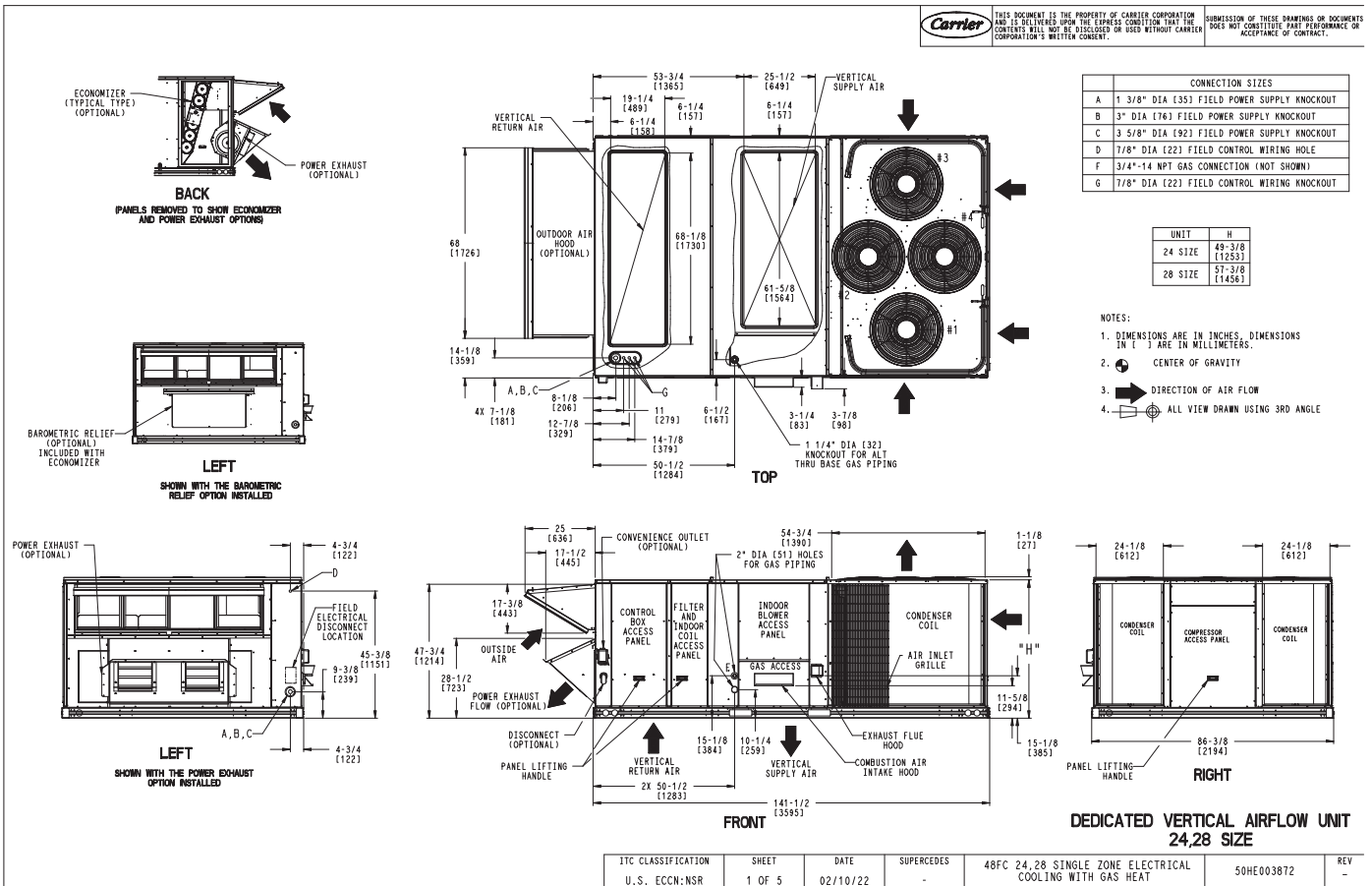
Ordering Information

| Part Number | Description | Quantity |
|------------------------------------|------------------------|----------|
| 48FCEM28AJA6-6F0A0 | Rooftop Unit | 1 |
| Field Installed Accessories | | |
| CRPWREXH069A00 | Power Exhaust | 1 |
| CRRFCURB047A00 | 14-inch Tall Roof Curb | 1 |

Certified Drawing for RTU-1

Project: Performance Honda
Prepared By:

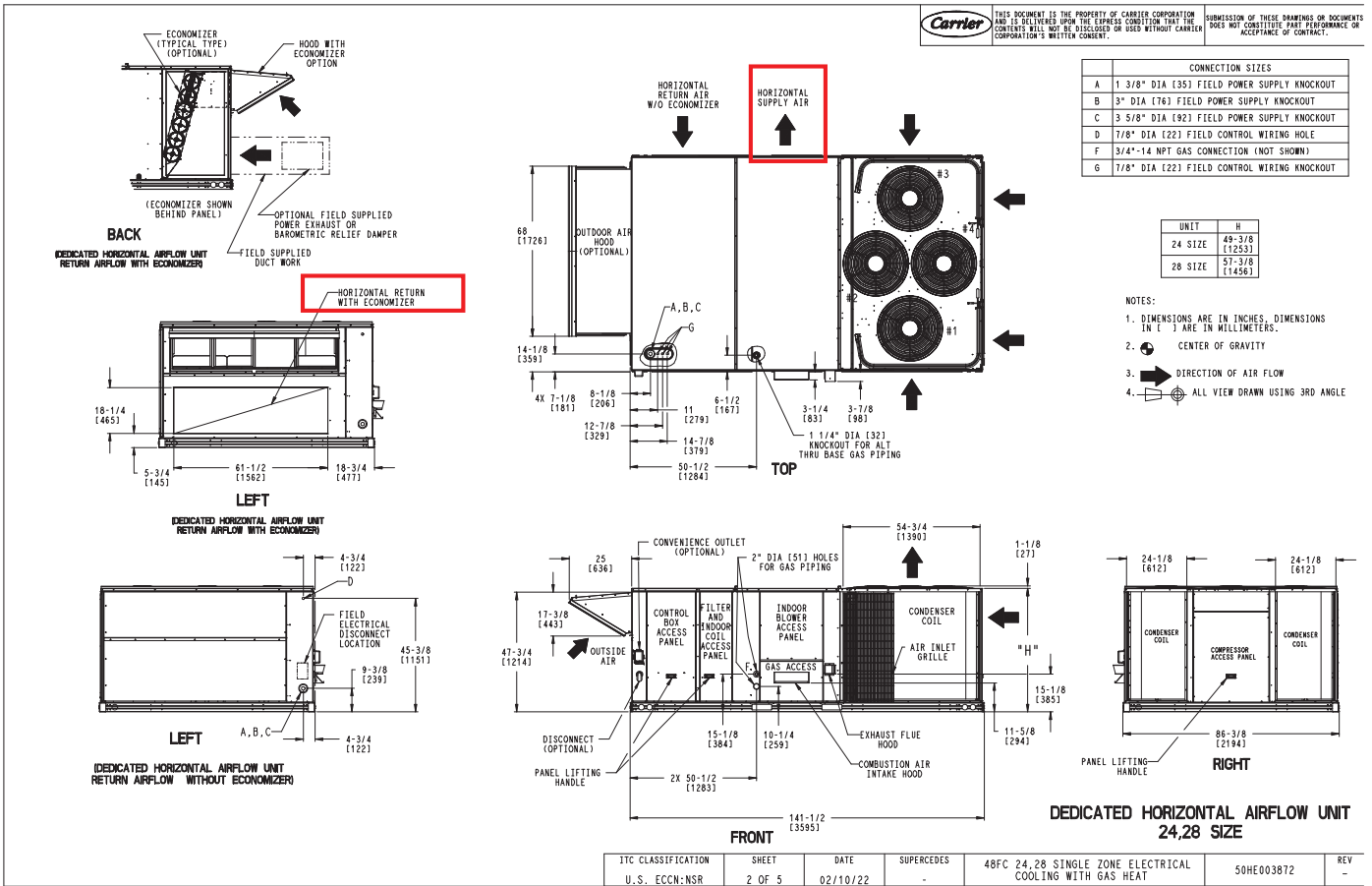
03/28/2023
02:23PM



Certified Drawing for RTU-1

Project: Performance Honda
Prepared By:

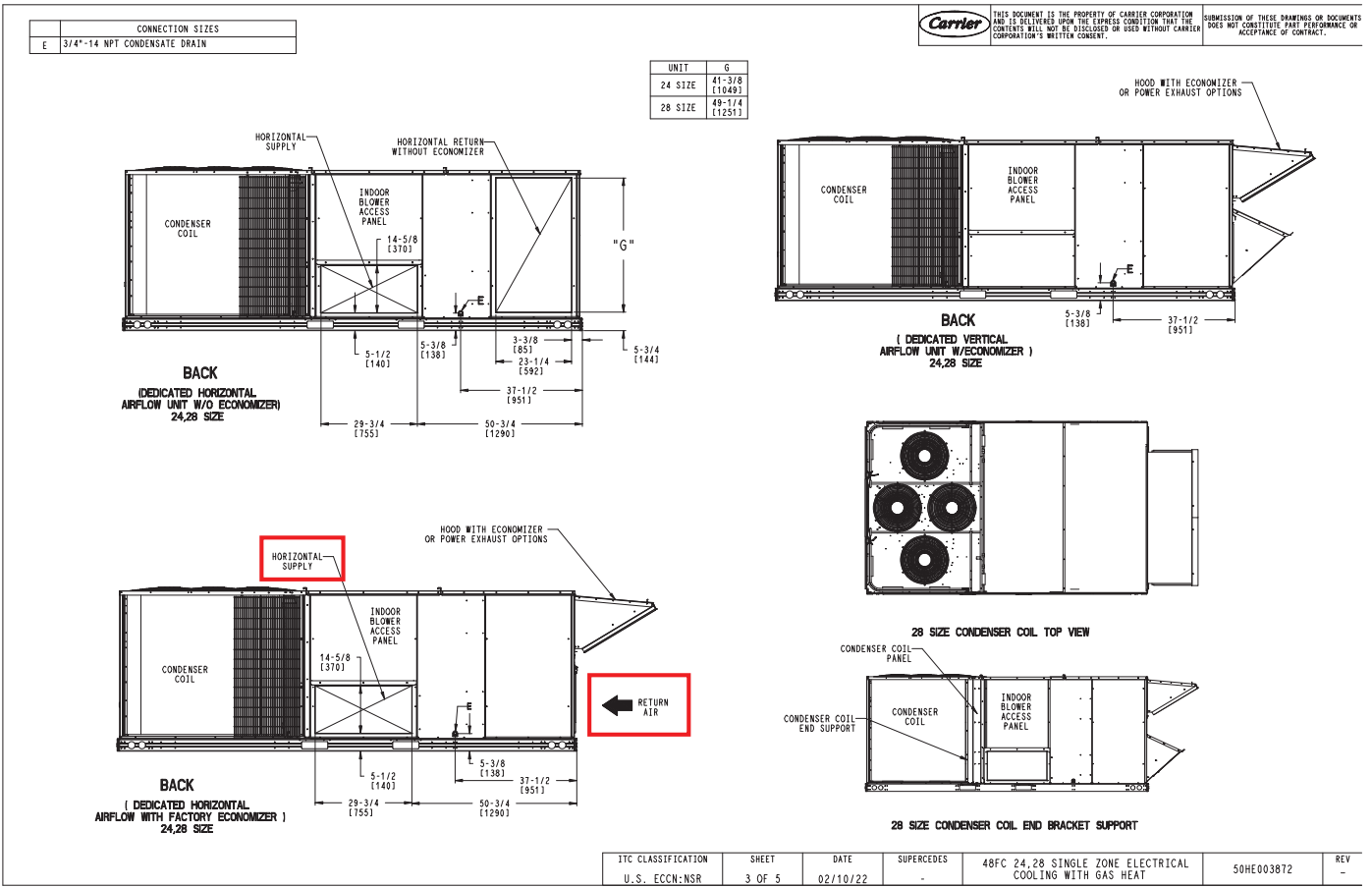
03/28/2023
02:23PM



Certified Drawing for RTU-1

Project: Performance Honda
Prepared By:

03/28/2023
02:23PM



| | | | | | | |
|--------------------|--------|----------|------------|---|------------|-----|
| ITC CLASSIFICATION | SHEET | DATE | SUPERCEDES | 48FC 24,28 SINGLE ZONE ELECTRICAL COOLING WITH GAS HEAT | 50HE003872 | REV |
| U.S. ECCN:NSR | 3 OF 5 | 02/10/22 | - | | | - |

Certified Drawing for RTU-1

Project: Performance Honda
Prepared By:

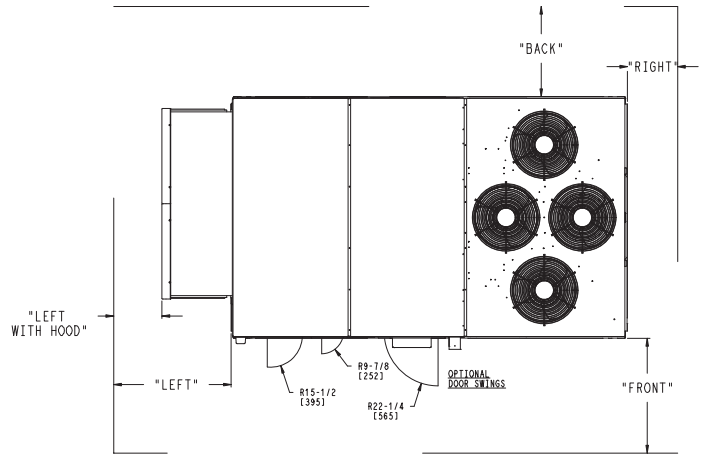
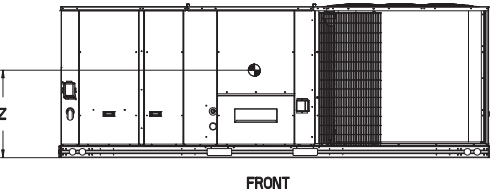
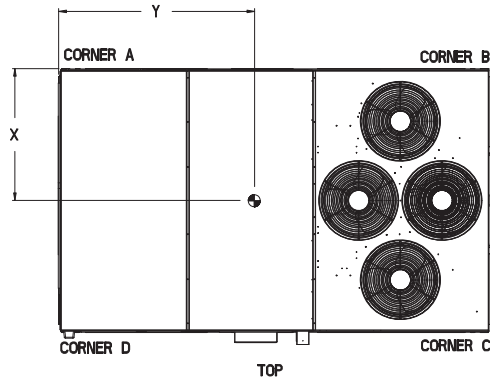
03/28/2023
02:23PM

| UNIT | STD UNIT WEIGHT * | | CORNER WEIGHT (A) | | CORNER WEIGHT (B) | | CORNER WEIGHT (C) | | CORNER WEIGHT (D) | | C.G. | | | | | |
|--------|-------------------|-----|-------------------|-----|-------------------|-----|-------------------|-----|-------------------|-----|--------|--------|----|--------|--------|-------|
| | LBS. | KG. | LBS. | KG. | LBS. | KG. | LBS. | KG. | LBS. | KG. | X | Y | Z | | | |
| 48FC24 | 2000 | 907 | 429 | 195 | 505 | 229 | 576 | 261 | 489 | 222 | 76 1/2 | [1943] | 46 | [1168] | 16 1/2 | [419] |
| 48FC28 | 2174 | 986 | 458 | 208 | 583 | 264 | 634 | 288 | 498 | 226 | 79 1/4 | [2013] | 45 | [1143] | 19 | [483] |



THIS DOCUMENT IS THE PROPERTY OF CARRIER CORPORATION AND IS DELIVERED UPON THE EXPRESS CONDITION THAT THE CONTENTS WILL NOT BE DISCLOSED OR USED WITHOUT CARRIER CORPORATION'S WRITTEN CONSENT. SUBMISSION OF THESE DRAWINGS OR DOCUMENTS DOES NOT CONSTITUTE PART PERFORMANCE OR ACCEPTANCE OF CONTRACT.

* STANDARD UNIT WEIGHT IS WITH LOW GAS HEAT AND WITHOUT PACKAGING. FOR OTHER OPTIONS AND ACCESSORIES, REFER TO THE PRODUCT DATA CATALOG.



- NOTES:
- CLEARANCE ABOVE THE UNIT TO BE 72"
 - FOR ALL MINIMUM CLEARANCES LOCAL CODES OR JURISDICTIONS MAY PREVAIL.

| SURFACE | CLEARANCE | | OPERATING CLEARANCE |
|----------------|---------------------------------|------------------------------------|---------------------|
| | SERVICE WITH CONDUCTIVE BARRIER | SERVICE WITH NONCONDUCTIVE BARRIER | |
| FRONT | 48 [1219mm] | 36 [914mm] | 18 [457mm] |
| LEFT | 48 [1219mm] | 42 [1067mm] | 18 [457mm] |
| BACK | 42 [1067mm] | 36 [914mm] | 18 [457mm] |
| LEFT WITH HOOD | 36 [914mm] | 36 [914mm] | 18 [457mm] |
| RIGHT | 36 [914mm] | 36 [914mm] | 18 [457mm] |
| TOP | 72 [1829mm] | 72 [1829mm] | 72 [1829mm] |

| | | | | | | |
|--------------------|--------|----------|------------|--|------------|-----|
| ITC CLASSIFICATION | SHEET | DATE | SUPERCEDES | 48FC 24, 28 SINGLE ZONE ELECTRICAL COOLING WITH GAS HEAT | 50HE003872 | REV |
| U.S. ECCN: NSR | 4 OF 5 | 02/10/22 | - | | | - |

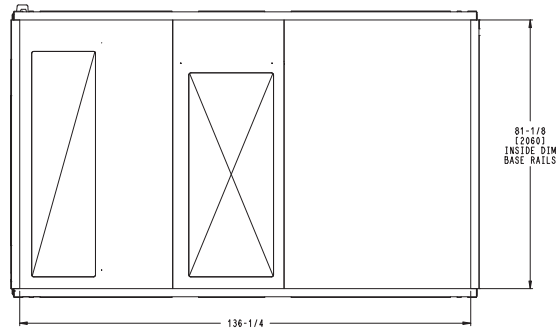
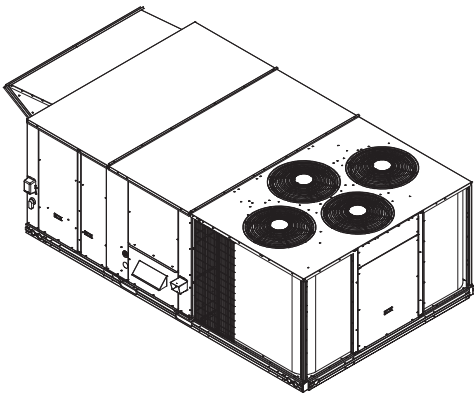
Certified Drawing for RTU-1

Project: Performance Honda
Prepared By:

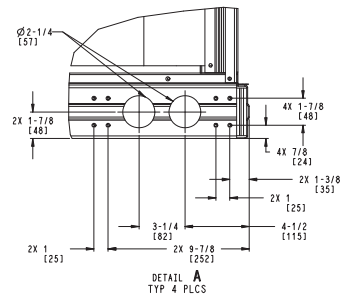
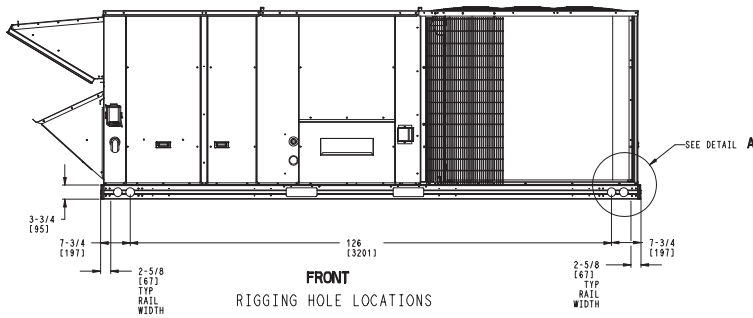
03/28/2023
02:23PM



THIS DOCUMENT IS THE PROPERTY OF CARRIER CORPORATION AND IS DELIVERED UPON THE EXPRESS CONDITION THAT THE CONTENTS HEREIN MAY BE DISCLOSED OR USED WITHOUT CARRIER CORPORATION'S WRITTEN CONSENT. SUBMISSION OF THESE DRAWINGS OR DOCUMENTS DOES NOT CONSTITUTE PART PERFORMANCE OR ACCEPTANCE OF CONTRACT.



BOTTOM
INSIDE BASE RAIL DIMENSIONS

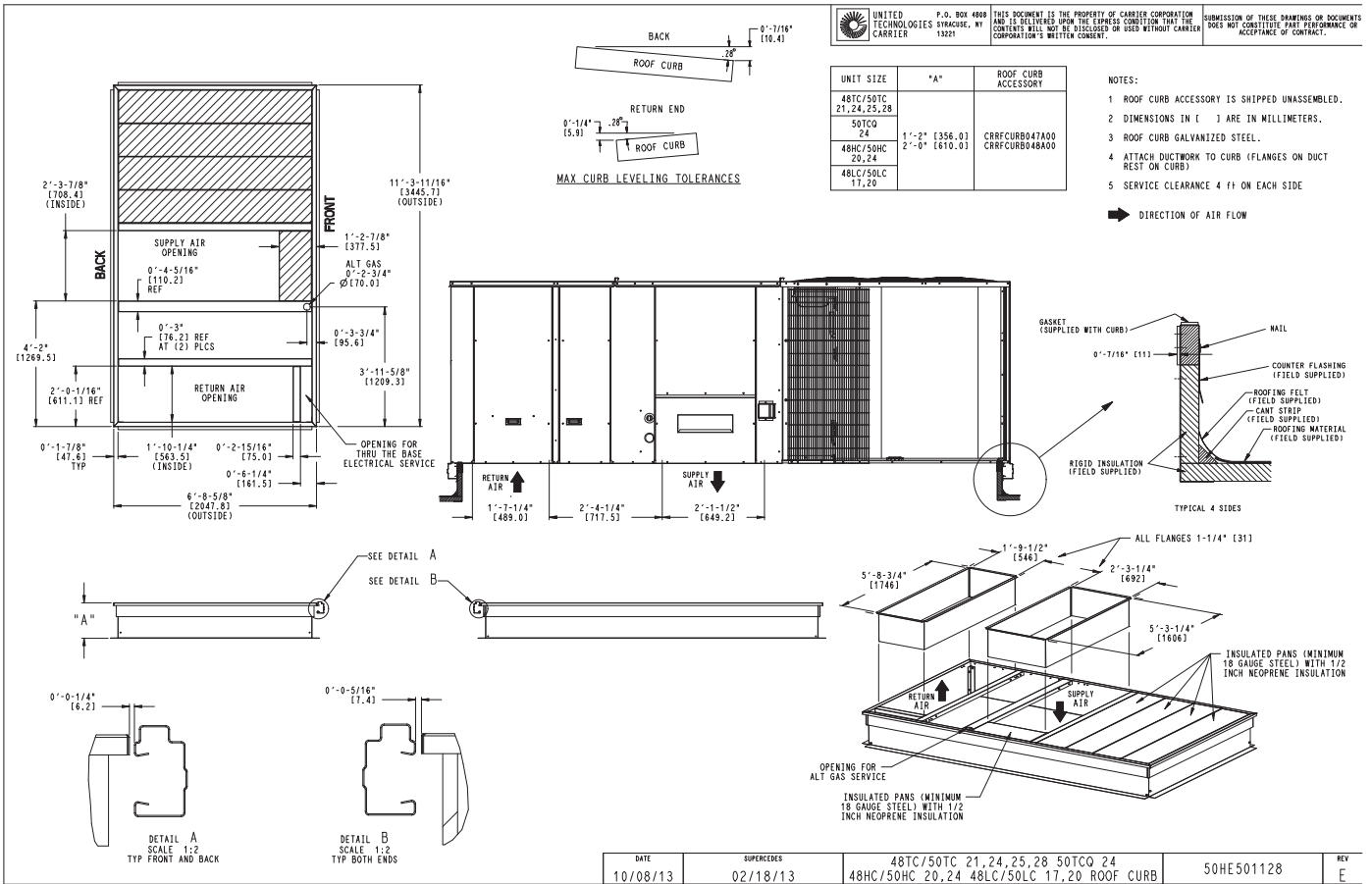


| | | | | | | |
|--------------------|--------|----------|------------|--|------------|-----|
| ITC CLASSIFICATION | SHEET | DATE | SUPERCEDES | 48FC 24, 28 SINGLE ZONE ELECTRICAL COOLING WITH GAS HEAT | 50HE003872 | REV |
| U.S. ECCN: NSR | 5 OF 5 | 02/10/22 | - | | | - |

Certified Drawing for RTU-1

Project: Performance Honda
Prepared By:

03/28/2023
02:23PM



Performance Summary For RTU-1

Project: Performance Honda
Prepared By:

03/28/2023
02:23PM

Part Number:48FCEM28AJA6-6F0A0

ARI EER:..... 9.80
IEER:..... 14.0

Base Unit Dimensions

Unit Length:..... 141.5 in
Unit Width:..... 86.4 in
Unit Height:..... 47.8 in

Operating Weight

Base Unit Weight:..... 2047 lb
Medium Heat:..... 21 lb
Enthalpy Economizer w/ Barometric Relief. Vertical and Horizontal Air Flow.:..... 245 lb

Accessories

Power Exhaust:..... 125 lb
14-inch Tall Roof Curb:..... 255 lb

Total Operating Weight:..... 2693 lb

Unit

Unit Voltage-Phase-Hertz:..... 460-3-60
Air Discharge:..... Horizontal
Fan Drive Type:..... Vane Axial
Actual Airflow:..... 10000 CFM
Site Altitude:..... 0 ft

Cooling Performance

Condenser Entering Air DB:..... 95.0 F
Evaporator Entering Air DB:..... 80.0 F
Evaporator Entering Air WB:..... 67.0 F
Entering Air Enthalpy:..... 31.44 BTU/lb
Evaporator Leaving Air DB:..... 59.6 F
Evaporator Leaving Air WB:..... 57.7 F
Evaporator Leaving Air Enthalpy:..... 24.86 BTU/lb
Gross Cooling Capacity:..... 295.97 MBH
Gross Sensible Capacity:..... 220.47 MBH
Compressor Power Input:..... 23.89 kW
Coil Bypass Factor:..... 0.174

Heating Performance

Heating Airflow:..... 10000 CFM
Entering Air Temp:..... 70.0 F
Leaving Air Temp:..... 93.2 F
Gas Heating Input Capacity:..... 248.0 / 310.0 MBH
Gas Heating Output Capacity:..... 200.0 / 251.0 MBH
Temperature Rise:..... 23.2 F
Thermal Efficiency (%):..... 81.0

Supply Fan

External Static Pressure:..... 0.80 in wg
Options / Accessories Static Pressure
Economizer:..... 0.10 in wg
Power Exhaust:..... (Fan Data Includes Drop)
Application External Static (ESP + Unit Opts/Acc.):..... 0.90 in wg
Fan RPM:..... 2140
Fan Power:..... 7.39 BHP
NOTE:..... Selected IFM RPM Range: 250 - 2170

Selection includes construction throwaway filter into the base fan curve. This filter is not MERV Rated.

Power Exhaust

Performance Summary For RTU-1

Project: Performance Honda
Prepared By:

03/28/2023
02:23PM

Return Duct Static:..... **0.40** in wg
Max. Air to Exhaust:..... **4590** CFM

Electrical Data

Voltage Range:..... **414 - 506**
Compressor #1 RLA:..... **18.6**
Compressor #1 LRA:..... **125**
Compressor #2 RLA:..... **18.6**
Compressor #2 LRA:..... **125**
Indoor Fan Motor Type:..... **HIGH**
Indoor Fan Motor FLA (Total):..... **5.6**
Combustion Fan Motor FLA (ea):..... **0.3**
Power Supply MCA:..... **62.9**
Power Supply MOCP (Fuse or HACR):..... **80**
Disconnect Size FLA:..... **67**
Disconnect Size LRA:..... **286**
Electrical Convenience Outlet:..... **None**
Power Exhaust [Motor Qty / FLA(ea motor)]:..... **2 / 3.1**
Outdoor Fan [Qty / FLA (ea)]:..... **4 / 0.9**

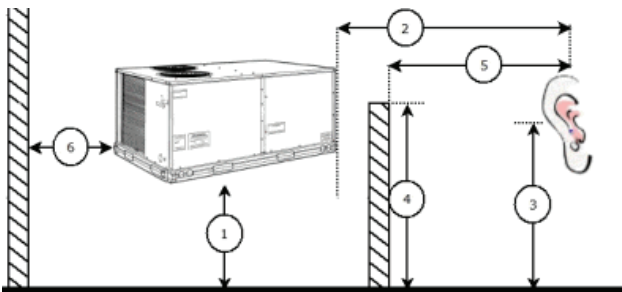
Control Panel SCCR: 5kA RMS at Rated Symmetrical Voltage

Acoustics

Sound Power Levels, db re 10E-12 Watts

| | Discharge | Inlet | Outdoor |
|------------|-----------|-------|---------|
| 63 Hz | 98.0 | 101.1 | 97.1 |
| 125 Hz | 92.1 | 81.2 | 88.3 |
| 250 Hz | 85.5 | 71.4 | 84.4 |
| 500 Hz | 85.1 | 61.9 | 83.3 |
| 1000 Hz | 79.7 | 56.9 | 80.7 |
| 2000 Hz | 77.9 | 55.3 | 77.4 |
| 4000 Hz | 77.2 | 48.8 | 73.4 |
| 8000 Hz | 70.1 | 38.7 | 67.3 |
| A-Weighted | 87.1 | 75.8 | 86.0 |

Advanced Acoustics



Advanced Acoustics Parameters

1. Unit height above ground:..... **30.0** ft
2. Horizontal distance from unit to receiver:..... **50.0** ft
3. Receiver height above ground:..... **5.7** ft
4. Height of obstruction:..... **0.0** ft
5. Horizontal distance from obstruction to receiver:..... **0.0** ft
6. Horizontal distance from unit to obstruction:..... **0.0** ft

Performance Summary For RTU-1

Project: Performance Honda
Prepared By:

03/28/2023
02:23PM

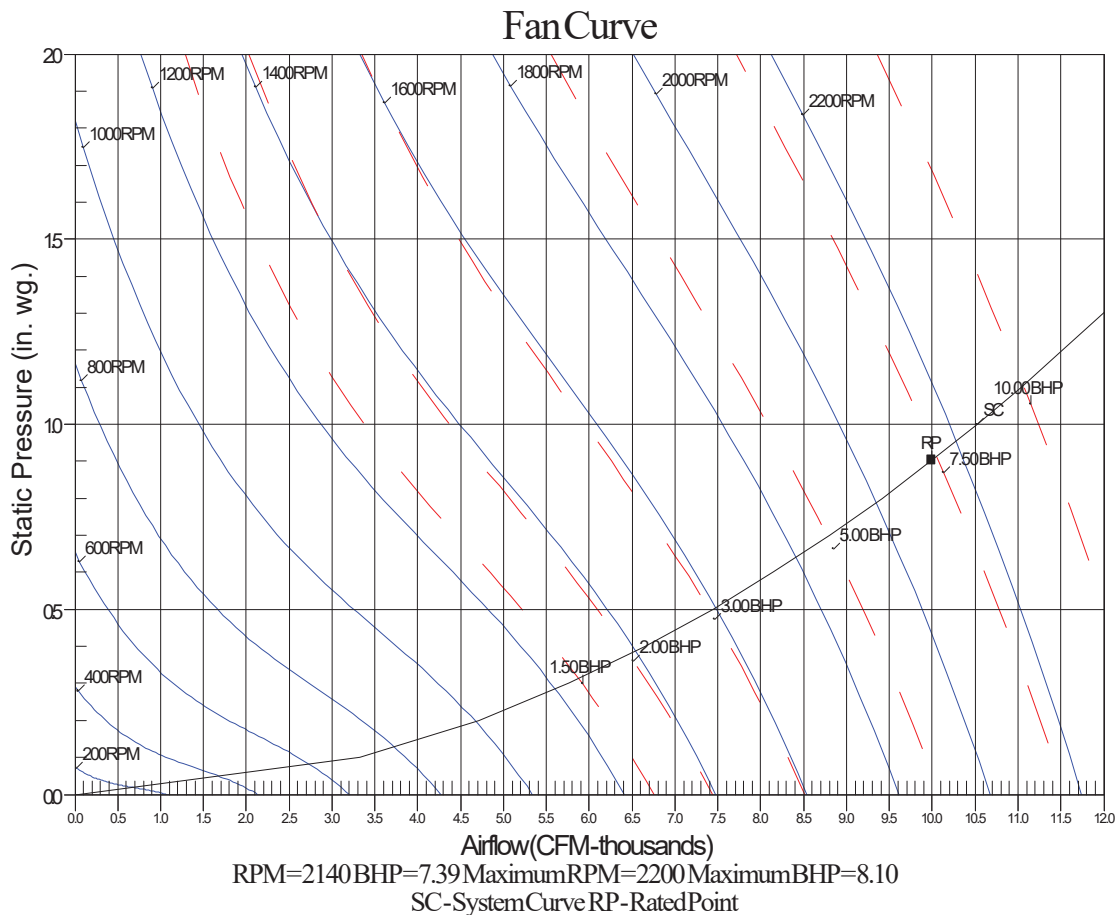
Detailed Acoustics Information

| Octave Band Center Freq. Hz | 63 | 125 | 250 | 500 | 1k | 2k | 4k | 8k | Overall |
|-----------------------------|------|------|------|------|------|------|------|------|----------|
| A | 97.1 | 88.3 | 84.4 | 83.3 | 80.7 | 77.4 | 73.4 | 67.3 | 98.1 Lw |
| B | 70.9 | 72.2 | 75.8 | 80.1 | 80.7 | 78.6 | 74.4 | 66.2 | 85.9 LwA |
| C | 64.7 | 55.9 | 52.0 | 50.9 | 48.3 | 45.0 | 41.0 | 34.9 | 65.7 Lp |
| D | 38.5 | 39.8 | 43.4 | 47.7 | 48.3 | 46.2 | 42.0 | 33.8 | 53.5 LpA |

Legend

- A Sound Power Levels at Unit's Acoustic Center, Lw
- B A-Weighted Sound Power Levels at Unit's Acoustic Center, LwA
- C Sound Pressure Levels at Specific Distance from Unit, Lp
- D A-Weighted Sound Pressure Levels at Specific Distance from Unit, LpA

Calculation methods used in this program are patterned after the ASHRAE Guide; other ASHRAE Publications and the AHRI Acoustical Standards. While a very significant effort has been made to insure the technical accuracy of this program, it is assumed that the user is knowledgeable in the art of system sound estimation and is aware of the tolerances involved in real world acoustical estimation. This program makes certain assumptions as to the dominant sound sources and sound paths which may not always be appropriate to the real system being estimated. Because of this, no assurances can be offered that this software will always generate an accurate sound prediction from user supplied input data. If in doubt about the estimation of expected sound levels in a space, an Acoustical Engineer or a person with sound prediction expertise should be consulted.



CU-F-1

**Submittal Cover Sheet
Unit Report
Performance Summary Report
Acoustic Summary
Certified Drawings**

Unit Report For CU-F-1

Project: Performance Honda
Prepared By:

03/28/2023



Outdoor Unit Parameters

Unit Model:.....**24SCA**
 Unit Size:.....**4 Tons (Size 48)**
 Voltage:.....**208/230-1-60** V-Ph-Hz

Indoor Coil Parameters

Unit Model:.....**CSPH**
 Unit Size:.....**4 Tons (Size 48)**
 Cabinet Finish:.....**Painted**
 Cabinet Width:.....**12 inch**
 Refrigerant Type:.....**Puron**

Outdoor Unit Dimensions and Weight

Unit Length:.....**31.1875** in
 Unit Width:.....**31.1875** in
 Unit Height:.....**28.6875** in
 Unit Shipping Weight:.....**190.** lb

Indoor Coil Dimensions and Weight

Unit Length:.....**11.75** in
 Unit Width:.....**28.8125** in
 Unit Height:.....**30.375** in
 Unit Shipping Weight:.....**64.** lb

RESIDENTIAL APPLICATIONS

This warranty is to the original purchasing owner and subsequent owners only to the extent and as stated in the Warranty Conditions and below. The limited warranty period in years, depending on the part and the claimant, is as shown in the table below.

| Item | Limited Warranty (Years) | |
|------------|--------------------------|------------------|
| | Original Owner | Subsequent Owner |
| Parts | 10* (or 5) | 5 |
| Compressor | 10* (or 5) | 5 |

*If properly registered within 90 days of original installation, otherwise 5 years (except in California and Quebec and other jurisdictions that prohibit warranty benefits conditioned on registration). See Warranty Conditions below.

OTHER APPLICATIONS

The warranty period is five (5) years on the compressor, and one (1) year on all other parts. The warranty is the original owner only and is not available for subsequent owners.

Ordering Information

| Part Number | Description | Quantity |
|---------------------|--|----------|
| Outdoor Unit | | |
| 24SCA448N003 | Comfort Single Stage Air Conditioner with Puron Refrigerant 4 Tons Cooling 14 SEER @ ARI Conditions | 1 |
| Indoor Coil | | |
| CSPHP4812ALA | Cased Slab Evaporator Coils with Puron Painted 12 inch Aluminum | 1 |
| Furnace | | |
| 59SC5B080E21--20 | 59SC5 Comfort +95 Single Stage Gas Furnace +95 AFUE 80,000 Btuh (Size 080) | 1 |

Unit Report For CU-F-1

Project: Performance Honda
 Prepared By:

03/28/2023

| | | |
|--|---------------------------------|--|
| | Up to 2000 Cfg CFM on Evap Coil | |
| | 21.0 inches | |



Furnace Parameters and Dimensions and Weight

Furnace:.....**SEER Enhancing Furnace**
 Furnace Model:.....**59SC**
 Furnace Efficiency:.....**+95 AFUE**
 Htg Capacity:.....**80,000 Btuh (Size 080)**
 Airflow:.....**Up to 2000 Cfg CFM on Evap Coil**
 Unit Length:.....**29.50** in
 Unit Width:.....**21.00** in
 Unit Height:.....**35.00** in
 Unit Shipping Weight:.....**154.5** lb

The Product and Ratings Data in this program is subject to change at any time and without notice. Please refer to the latest product literature and the AHRI directory at www.ahridirectory.org for the most up-to-date information.

Performance Summary For CU-F-1

Project: Performance Honda
Prepared By:

03/28/2023

System Performance

| | | | | |
|------------------------------|-------------------------|---------------------------------|---------------|-----|
| System: | 24SCA/CSPH | Actual Clg Airflow:..... | 1600.0 | CFM |
| System Quantity:..... | 1 | Standard Clg Airflow:..... | 1600.0 | CFM |
| Altitude:..... | 0.0 ft | Total Net Clg Capacity:..... | 44.63 | MBH |
| Furnace Type:..... | 59SC5B080E21**20 | Net Sensible Clg Capacity:..... | 33.53 | MBH |
| Linear Pipe Length:..... | 0.0 ft | Total System Power:..... | 4.55 | kW |
| SEER2 @ ARI Conditions:..... | 14.0 | | | |
| EER2 @ ARI Conditions:..... | 12.0 | | | |

System Parameters

Outdoor Unit Parameters

| | | |
|------------------------------|-------------------------|---------|
| Unit Model:..... | 24SCA448N003 | |
| Unit Size (Nominal):..... | 4 Tons (Size 48) | |
| Voltage:..... | 208/230-1-60 | V-Ph-Hz |
| Clg Ent Air DB Ambient:..... | 95.0 | °F |

Indoor Coil Parameters

| | | |
|--------------------------------------|-------------------------|--------|
| Unit Model:..... | CSPHP4812ALA | |
| Unit Size (Nominal):..... | 4 Tons (Size 48) | |
| Ent Air DB:..... | 80.00 | °F |
| Ent Air WB:..... | 67.00 | °F |
| Ent Enthalpy:..... | 31.44 | BTU/lb |
| Lvg Air DB:..... | 60.60 | °F |
| Lvg Air WB:..... | 58.32 | °F |
| Lvg Enthalpy:..... | 25.24 | BTU/lb |
| Total External Static Pressure:..... | 0.50 | in wg |

Furnace Ratings

| | | |
|--------------------------|-------------------------|--------|
| Furnace:..... | 59SC5B080E21--20 | |
| Furnace Efficiency:..... | +95 AFUE | |
| Input Max Heat:..... | 80,000 | BTU/hr |
| Output Max Heat:..... | 78,000 | BTU/hr |

Furnace Performance

| | | |
|--------------------------------------|--------------|---|
| Certified Temp High Rise Range:..... | 40-70 | F |
|--------------------------------------|--------------|---|

The customer must ensure the specified airflow and static pressure are within furnace capabilities.

Electrical Data

Outdoor Electrical Data

| | | |
|---------------------------|---------------------|---------|
| Unit Voltage:..... | 208/230-1-60 | V-Ph-Hz |
| Fan Motor FLA:..... | 1.40 | Amps |
| MCA:..... | 24.5 | Amps |
| Max Fuse:..... | 40 | Amps |
| Operating Range Min:..... | 197 | V |
| Operating Range Max:..... | 253 | V |
| Compressor RLA:..... | 18.5 | Amps |
| Compressor LRA:..... | 124.0 | Amps |

Furnace Electrical Data

| | | |
|--------------------|-----------------|---------|
| Unit Voltage:..... | 115-1-60 | V-Ph-Hz |
| Unit MCA:..... | 12.3 | Amps |
| Unit MOCP:..... | 20 | Amps |

The Product and Ratings Data in this program is subject to change at any time and without notice. Please refer to the latest product literature and the AHRI directory at www.ahridirectory.org for the most up-to-date information.

Acoustic Summary For CU-F-1

Project: Performance Honda
Prepared By:

03/28/2023

Outdoor Unit Parameters:

Unit Model: **24SCA**
Unit Size: **4 Tons (Size 48)**
Variations: **Standard**

| Octave Band Center Frequency, Hz | 125 | 250 | 500 | 1k | 2k | 4k | 8k | dBA |
|----------------------------------|------|------|------|------|------|------|------|------|
| Sound Power,dB | 72.3 | 74.1 | 71.2 | 70.6 | 63.8 | 61.6 | 55.9 | |
| A-Weighted Sound Power, dBA | | | | | | | | 76.0 |

Indoor Coil Parameters:

Unit Model: **CSPH**
Unit Size: **4 Tons (Size 48)**
Cabinet Finish: **Painted**
Cabinet Width: **12 inch**

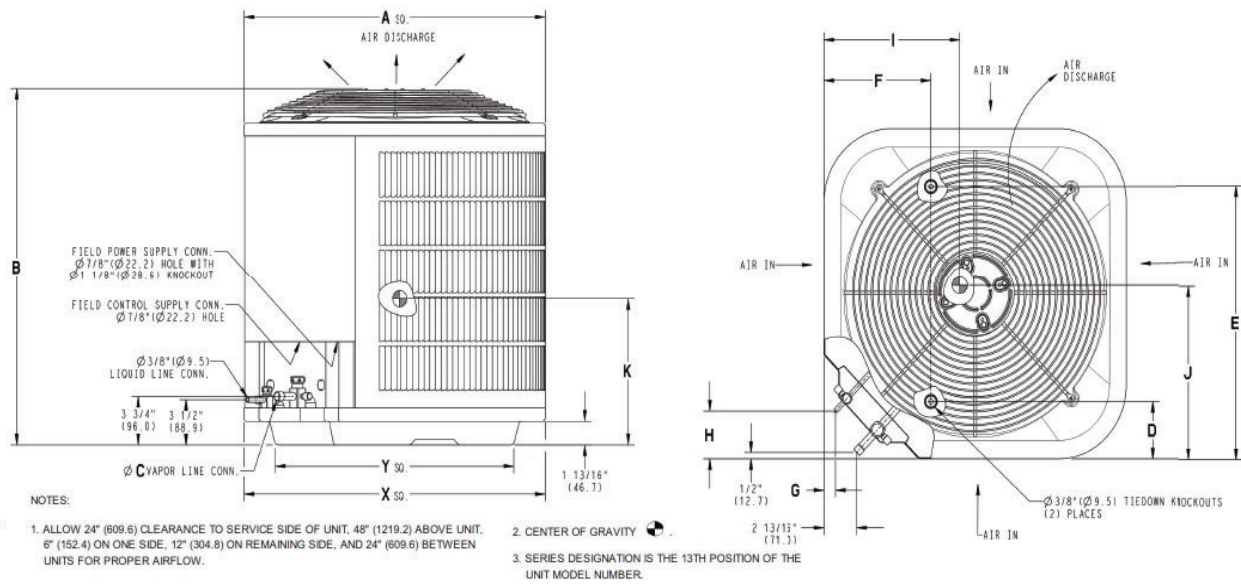
No Indoor sound data available.

The Product and Ratings Data in this program is subject to change at any time and without notice. Please refer to the latest product literature and the AHRI directory at www.ahridirectory.org for the most up-to-date information.

Certified Drawing For CU-F-1

Project: Performance Honda
Prepared By:

03/28/2023



Outdoor Model

Unit Model:..... **24SCA**
 Unit Size:..... **4 Tons (Size 48)**
 Voltage:..... **208/230-1-60** V-Ph-Hz
 SEER:..... **14**
 PartNumber:..... **24SCA448N003**

| Shipping Dimensions and Weights | | Outdoor Unit |
|---------------------------------|--|--------------|
| Height | | 33.94 in |
| Width | | 34.25 in |
| Length | | 34.25 in |
| Operating Weight | | 171. lb |
| Shipping Weight | | 190. lb |

| Dimensions | | | | | | | | | | |
|------------|----------|---------|---------|----------|---------|---------|---------|----------|----------|----------|
| A | B | C | D | E | F | G | H | I | J | K |
| 31.19 in | 28.69 in | 0.88 in | 6.56 in | 24.70 in | 9.13 in | 0.31 in | 3.00 in | 14.50 in | 14.50 in | 12.50 in |

The Product and Ratings Data in this program is subject to change at any time and without notice. Please refer to the latest product literature and the AHRI directory at www.ahridirectory.org for the most up-to-date information.

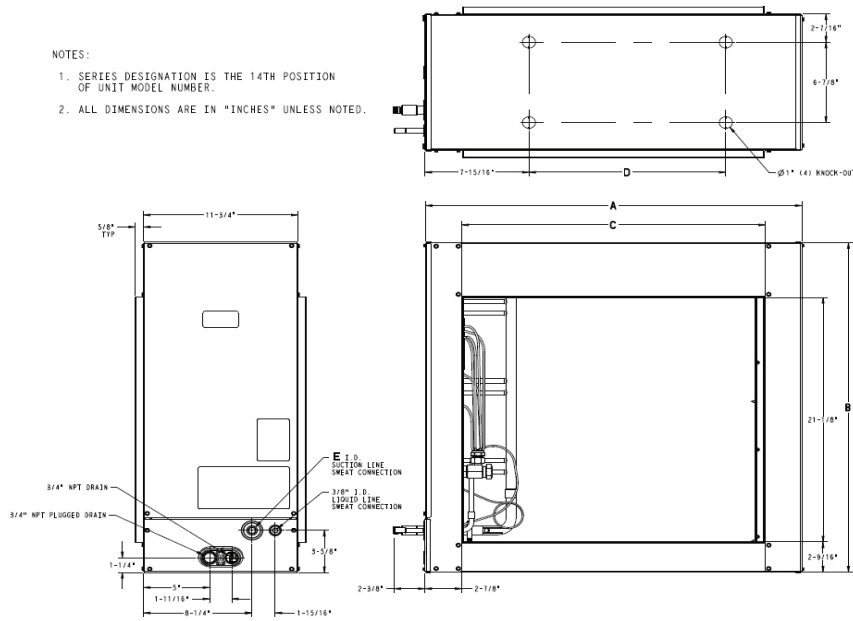
Certified Drawing For CU-F-1

Project: Performance Honda
Prepared By:

03/28/2023

NOTES:

1. SERIES DESIGNATION IS THE 14TH POSITION OF UNIT MODEL NUMBER.
2. ALL DIMENSIONS ARE IN "INCHES" UNLESS NOTED.



Indoor Coil

Unit Model:.....CSPH
Unit Size:.....4 Tons (Size 48)
Cabinet Finish:.....Painted
Cabinet Width:.....12 inch
PartNumber:.....CSPHP4812ALA

| Dimensions and Weights | | Indoor Coil |
|------------------------|--|-------------|
| Height | | 30.38 in |
| Width | | 28.81 in |
| Length | | 11.75 in |
| Shipping Weight | | 64. lb |

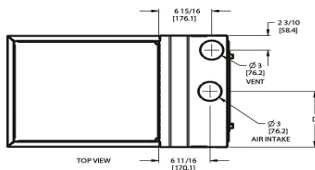
| Dimensions | | | | |
|------------|----------|----------|----------|---------|
| A | B | C | D | E |
| 28.81 in | 30.38 in | 23.06 in | 17.31 in | 0.88 in |

The Product and Ratings Data in this program is subject to change at any time and without notice. Please refer to the latest product literature and the AHRI directory at www.ahridirectory.org for the most up-to-date information.

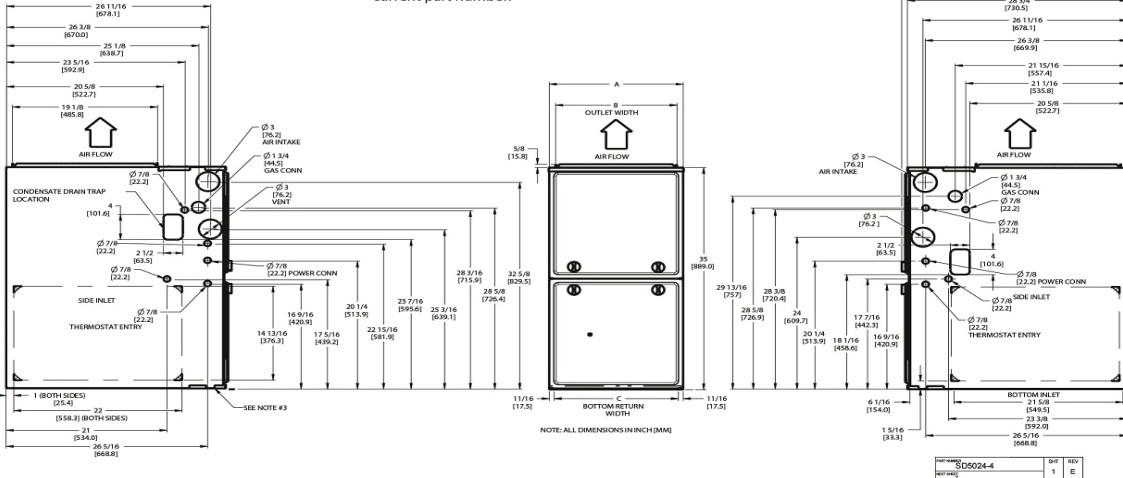
Certified Drawing For CU-F-1

Project: Performance Honda
Prepared By:

03/28/2023



- NOTES:**
- Doors may vary by model.
 - Minimum return-air openings at furnace, based on metal duct. If flex duct is used, see flex duct manufacturer's recommendations for equivalent diameters.
 - For 800 CFM-16-in. (406 mm) round or 14 1/2 x 12-in. (368 x 305 mm) rectangle.
 - For 1200 CFM-20-in. (508 mm) round or 14 1/2 x 19 1/2-in. (368 x 495 mm) rectangle.
 - For 1600 CFM-22-in. (559 mm) round or 14 1/2 x 22 1/16-in. (368 x 560mm) rectangle.
 - Return air above 1800 CFM at 0.5 in. w.c. ESP on 24.5" casing, requires one of the following configurations: 2 sides, 1 side and a bottom or bottom only. See Air Delivery table in this document for specific use to allow for sufficient airflow to the furnace.
 - Vent and Combustion air pipes through blower compartment must use accessory "Vent Kit - Through the Cabinet". See accessory list for current part number.



DIMENSIONAL DRAWING

Furnace Model:.....**59SC**
 Furnace Efficiency:.....**+95 AFUE**
 Htg Capacity:.....**80,000 Btuh (Size 080)**

Airflow:.....**Up to 2000 Cfg CFM on Evap Coil**
 PartNumber:.....**59SC5B080E21--20**

| Dimensions | | | | | Shipping Wgt |
|------------|----------|----------|----------|--|--------------|
| A | B | C | D | | |
| 21.00 in | 19.38 in | 19.50 in | 10.50 in | | 154.50 in |

The Product and Ratings Data in this program is subject to change at any time and without notice. Please refer to the latest product literature and the AHRI directory at www.ahridirectory.org for the most up-to-date information.