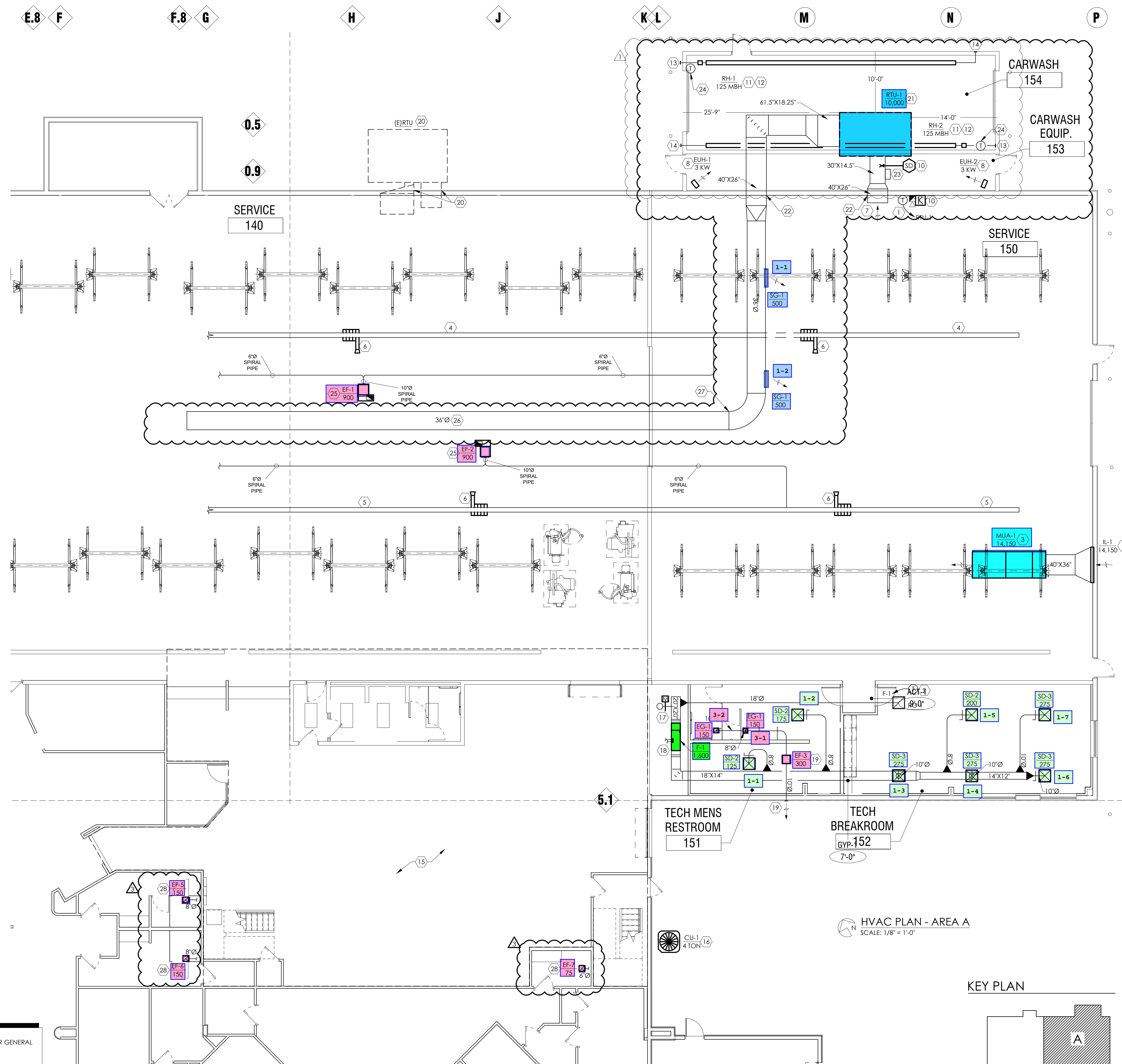


# HVAC CODED NOTES

- PROVIDE A 7-DAY PROGRAMMABLE THERMOSTAT COMPATIBLE WITH ROOFTOP UNIT AND ECONOMISER. MOUNT THERMOSTAT 48" A.F.F. COORDINATE FINAL LOCATION WITH GENERAL CONTRACTOR AND C.M. PRIOR TO INSTALLATION.
- PROVIDE A 7-DAY PROGRAMMABLE THERMOSTAT COMPATIBLE WITH FURNACE (F). PROVIDE WITH AUXILIARY CONTACT TO CONTROL O.A. MOD MOUNT THERMOSTAT 48" A.F.F. COORDINATE FINAL LOCATION WITH GENERAL CONTRACTOR.
- DIRECT FIRE MAKE UP AIR UNIT FOR SERVICE (150) AREA PROVIDED BY HVAC CONTRACTOR. UNIT IS SUSPENDED FROM STRUCTURE. MAKE UP AIR UNIT IS WIRED TO RUN CONTINUOUSLY. REFER TO SHEET H2.01 FOR ADDITIONAL INFORMATION.
- MONOXIVENT TECHNORAIL - VEHICLE EXHAUST SYSTEM: PROVIDE WITH 216'-0" LONG N-T-57.5M TECHNORAIL. CONTRACTOR TO CONFIRM RAIL SYSTEM SIZING WITH MANUFACTURER'S REP PRIOR TO ORDERING.
- MONOXIVENT TECHNORAIL - VEHICLE EXHAUST SYSTEM: PROVIDE WITH 175'-0" LONG N-T-53.5M TECHNORAIL. CONTRACTOR TO CONFIRM RAIL SYSTEM SIZING WITH MANUFACTURER'S REP PRIOR TO ORDERING.
- MONOXIVENT HOSE RAIL: N-T-5-9254 (SPRING OPERATED WITH 25X4" DIAMETER SERIES 4000 HOSE. REEL AND HOSE TO BE BLUE WITH BLACK WEAR STRIP.) PROVIDE WITH MODEL #: 23827-SL RUBBER OVAL MOUTH TAILPIPE ADAPTOR AND MODEL #: 23456 4" HOSE CLAMP. PROVIDE WITH (2) Y-KIT-4 WYE KITS FOR DUAL EXHAUST VEHICLES.
- COVER RETURN DUCT WITH 1/2" WIRE MESH.
- ELECTRIC UNIT HEATER. SEE SCHEDULE ON SHEET H2.01 FOR ADDITIONAL INFORMATION.
- INLET LOUVER (IL-2) WIRED TO OPEN UPON ACTIVATION OF MUA-1. SEE FAN AND LOUVER SCHEDULES ON SHEET H2.01 FOR ADDITIONAL INFORMATION.
- PROVIDE UNIT MOUNTED 24V SMOKE DETECTOR, IF FIELD INSTALLED BY CONTRACTOR IT MUST BE INSTALLED PER MFG. OF SMOKE DETECTOR AND UNIT INSTALLATION GUIDELINES. PROVIDE W/ COMPATIBLE KEY TEST SWITCH AND REMOTE AUDIO VISUAL DEVICE MOUNTED ADJACENT TO THERMOSTAT OF UNIT SERVICE TO SHUT DOWN UNIT, AND SIGNAL AUDIO/VISUAL DEVICE UPON TRIP OF DETECTOR.
- PROVIDE AND INSTALL RADIANT HEATER SUSPENDED FROM STRUCTURE AT LOCATION SHOWN. REFER TO SHEET H2.01 FOR ADDITIONAL INFORMATION. HVAC CONTRACTOR TO INSTALL ANY SHIELDING REQUIRED TO MAINTAIN CLEARANCES TO COMBUSTIBLES. COORDINATE WITH HEATER MANUFACTURER.
- MOUNT RADIANT HEATERS AS HIGH AS POSSIBLE. PROVIDE SIDE EXTENSION REFLECTORS. DO NOT TILT REFLECTORS.
- 4" DIAMETER COMBUSTION AIR SUPPLY THROUGH WALL. FLASH AND SEAL WATER.
- 4" DIAMETER "B" VENT THROUGH ROOF. A MINIMUM OF 3' ABOVE COMBUSTION AIR SUPPLY HEIGHT. FLASH AND SEAL WATER TIGHT.
- EXISTING TO REMAIN. NO SCOPE OF WORK IN THIS AREA.
- CONDENSING UNITS ON 2" LEVEL CONCRETE PAD 4" LARGER THAN UNIT ON A LEVEL 6" BASE. COORDINATE LOCATION WITH GENERAL CONTRACTOR. EXTEND REFRIGERANT LINES PER MFG. INSTALLATION GUIDELINES TO CORRESPONDING INDOOR UNIT. VERIFY ROUTING WITH G.C. AND OBTAIN APPROVAL PRIOR TO COMMENCEMENT OF WORK.
- 10" FRESH AIR DUCT THROUGH ROOF WITH A 24V MOD COMPATIBLE WITH THERMOSTAT TERMINATE WITH ROOF CAP WITH INSECT SCREEN. PROVIDE WITH AUXILIARY CONTACT TO CONTROL 24V MOD TO OPEN DURING OCCUPIED HOURS AND CLOSE DURING UNOCCUPIED HOURS. FLASH AND SEAL WATER TIGHT. FRESH AIR INTAKE TO BE 10' FROM EXHAUST OUTLET. SEE DETAILS ON SHEET H2.01.
- SCHEDULE 40 PVC COMBUSTION AND VENT PIPING WITH CONCENTRIC ROOF VENT KIT. SIZE AND ROUTE PER MANUFACTURER'S INSTALLATION GUIDELINES. MAINTAIN A MINIMUM OF 10'-0" CLEARANCE TO ALL OUTDOOR INTAKES AND EXHAUST AIR OUTLETS.
- EXHAUST FAN SUSPENDED ABOVE CEILING. INSTALL PER MANUFACTURER'S INSTALLATION GUIDELINES. EXTEND 10" EXHAUST DUCT FROM FAN TO WALL CAP. FLASH AND SEAL WATER TIGHT.
- EXISTING ROOFTOP UNIT AND ALL ASSOCIATED DUCTWORK TO BE DEMO. EXISTING EXTERIOR WALL OPENINGS TO BE REPAIR BY GENERAL CONTRACTOR.
- ROOF MOUNTED ROOFTOP UNIT. SEE SHEET H2.01 FOR ADDITIONAL INFORMATION.
- DUCT THROUGH EXTERIOR WALL. COORDINATE ALL WORK AND EXTERIOR WALL FRAMING WITH G.C. SEE DETAIL "A" ON SHEET H2.01 FOR EXTERIOR DUCT WORK INSULATION. PROVIDE STRUCTURAL ENGINEERING FOR REINFORCEMENT OF EXTERIOR WALL. FLASH AND SEAL WATER TIGHT.
- POWERED EXHAUST MOUNTED IN DUCT. WIRED FROM RTU. INSTALL AND WIRE PER MANUFACTURER'S INSTALLATION GUIDELINES.
- PROVIDE A 7-DAY PROGRAMMABLE HEATING ONLY THERMOSTAT BY UNIT MANUFACTURER COMPATIBLE WITH UNIT. PROVIDE LOW VOLTAGE CONTROL WIRING AND MAKE FULLY FUNCTIONAL.
- EXHAUST FAN SUSPENDED FROM STRUCTURE. INSTALL PER MANUFACTURER'S INSTALLATION GUIDELINES. EXTEND 10" EXHAUST DUCT FROM FAN UP THROUGH ROOF. TERMINATE IN GOOSENECK FITTING WITH WIRE MESH BIRD SCREEN. FLASH AND SEAL WATER TIGHT. WIRED TO OPERATE CONTINUOUSLY DURING OCCUPIED HOURS. COORDINATE WITH ELECTRICAL CONTRACTOR.
- HAVC CONTRACTOR TO PROVIDE DUCTSOX FOR AIR DISTRIBUTION WITH SKELECORE PULL-TIGHT SYSTEM. INSTALL PER MANUFACTURER'S INSTALLATION GUIDELINES. COORDINATE WITH VENDOR FOR ALL ACCESSORIES AND COLOR OPTIONS PRIOR TO PURCHASE.
- CONNECT DUCTSOX TO SPIRAL SUPPLY DUCTWORK. FIELD VERIFY EXACT MOUNTING REQUIREMENTS WITH G.C. AND DUCTSOX VENDOR REP.
- NEW EXHAUST FAN TO REPLACE EXISTING FAN. INSTALL PER MANUFACTURER'S GUIDELINES. CONNECT NEW EXHAUST FANS TO EXISTING EXHAUST DUCTWORK. FIELD VERIFY EXACT ROUTING AND LOCATIONS. REFER TO SHEET H2.01 FOR ADDITIONAL INFORMATION FOR EXHAUST FANS.



[SERVICE AREA 150] MINIMUM EXHAUST RATE

UNIT	SPACE	AREA SQ. FT.	TOTAL CFM/SQFT	TOTAL REQUIRED	PROVIDED
EF-1,2,4	SERVICE AREA (CONTINUOUS)	18,811	0.75	14,108	14,150

### HVAC LEGEND

TYPE	DIFFUSER DESIGNATION	SYMBOL	DESCRIPTION
SD-2 400		SD	DUCT SMOKE DETECTOR
	EXHAUST FAN	▲	DUCT TRANSITION/ BRANCH DUCT TAKEOFF
	S.A. DIFFUSER	□	TURNING VANE
	R.A. DIFFUSER	□	THERMOSTAT X-UNIT #
	MANUAL DAMPER	⌘	REMOTE A/V WITH KEY TEST SWITCH
OA/SA/RA	OUTSIDE/SUPPLY/RETURN AIR	(E) / (R) / (N)	EXISTING/RELOCATED/ NEW
	CONNECT TO EXISTING	○	ROOF MOUNTED EQUIPMENT

CONSULTANT 01

**PERFORMANCE Honda**  
RT 4 • FAIRFIELD

ENGINEERING GROUP, LTD.  
625 EAST NORTH BROADWAY  
COLUMBUS, OHIO 43214  
614-225-1580  
EMENGINEERINGGROUP.COM  
PROJECT NUMBER: 220117  
DESIGN BY: CJA

DRAWING SET ©2022 archall architects llc

REVISIONS	DATE	DESCRIPTION
1	09/09/2022	preliminary
2	11/29/2022	check set
3	12/13/2022	bid
4	12/13/2022	permit
5	12/13/2022	construction

archall architects  
614-469-7200  
480-421-4555

STATE OF OHIO  
JOHN STEVEN ESCHENBRENNER  
REGISTERED PROFESSIONAL ENGINEER  
No. 7267

archall architects

PROJECT NUMBER: 022032  
SHEET TITLE: HVAC PLAN - AREA A  
SHEET NUMBER: H1.01

