

CULVERS INDIANAPOLIS, IN

Friday, May 20, 2022

10 Remarks Identified

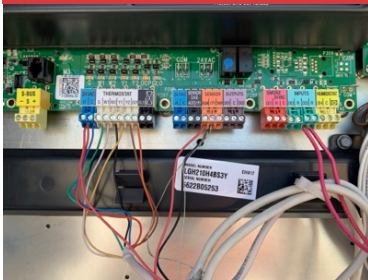


STOREFRONT



RTU-2

Note curb adaptor



RTU-2 PRODIGY WIRING IS CORRECT



FOUND DIFFUSER 2-8 ABOVE THE CEILING



MOVED DIFFUSER 2-8 DOWN FOR TESTING TOTAL FLOW



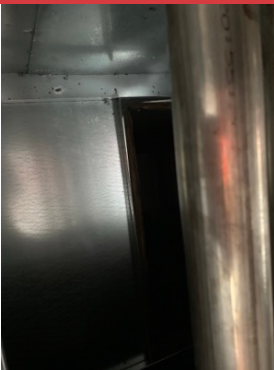
RTU-2 MAIN DROP

21X29" subtracting the Internal liner gives flow area of 20x28"



CURB ADAPTOR/ DUCT DROP ALIGNMENT

Marked in blue are the fan discharges, note the fan on the bottom is not aligned near the duct drop. For best performance red duct drop should be centered between the two fan discharges in blue.

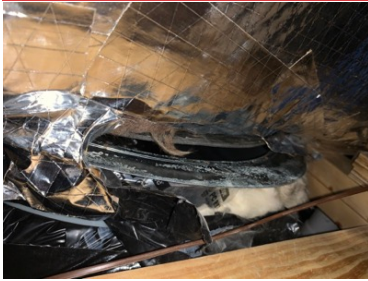


**SHOWN IS DUCT DROP ALIGNED DIRECTLY UNDER FAN
2**



INSTALLING DIFFUSER 2-8

Diffuser 2-8 needs to be installed where drawn to improve the hood capture. This is done preferably by installing a 12"x24" diffuser in front of the ansul cabinet inline with the other diffusers. If that's not possible moving the diffuser to the spot marked in blue is the next best option. The missing diffuser is allowing smoke to escape out the right side of the fryer hood



LEAKAGE SOURCE

Located above the light that is above the triple sink. Branch duct that is connected to main TRUNKLINE