

SEAL

PROJECT



CAVA_NORTH BRUNSWICK_NJ

222 GRAND AVE.
 NORTH BRUNSWICK, NJ 08902

DATE	DESCRIPTION
11/01/24	PRESCREEN COMMENTS
11/26/24	PERMIT SET
01/27/25	PERMIT ADDENDUM / CONSTRUCTION SET

This document contains information proprietary to Valerio Architects and is furnished in confidence for the limited purpose of evaluation, bidding or review. This document or its contents may not be used for any other purpose and may not be reproduced or disclosed to others without the prior written consent of Valerio Architects.

Captive Air

Date Modified: 02/28/24
 Date Created: AS SHOWN
 Scale: 3482-24-05
 Project No.: FA
 Drawn By: CAD File: 3482-250121- Construction Set_AB.vwx

REVISIONS

DESCRIPTION	DATE

recon·air
 Maryland Office
 8120 Woodmont Avenue, Suite 720, Bethesda, MD, 20814
 PHONE: (800) 988-1081 FAX: 9192275931 EMAIL: reg32@econair.com

Cava - North Brunswick, NJ
 2300 U.S. 1,
 North Brunswick Township, NJ 08902

DATE: 7/15/2024
DWG.#: 6917126
DRAWN BY: AJP-32
SCALE: 3/4" = 1'-0"
MASTER DRAWING

SHEET NO.
 1

FOR QUESTIONS, CALL THE
 Maryland Office
 REGION 32
 PHONE: (800) 988 - 0881
 EMAIL: reg32@econair.com

PATENT NUMBERS
 AC-PSP (UNITED STATES) - US PATENT 7963830 B2.
 AC-PSP WALL (CANADA) - CA PATENT 2820509.
 AC-PSP ISLAND (CANADA) - CA PATENT 2520330.

HOOD INFORMATION - JOB#6917126

HOOD NO	TAG	MODEL	MANUFACTURER	LENGTH	MAX COOKING TEMP	TYPE	APPLIANCE DUTY	DESIGN CFM/FT	TOTAL EXH CFM	EXHAUST PLENUM RISER(S)					MUA CFM	AC CFM	HOOD CONSTRUCTION	HOOD CONFIG	
										WIDTH	LENG	HEIGHT	DIA	CFM				VEL	SP
1	33	6030 EX-2-ACPPSP-F	ECON-AIR	11' 7"	600 DEG	I	HEAVY	225	2606	4'	18'	2606	1475	-0.725'	2163	728	430 SS WHERE EXPOSED	ALONE	ALONE

HOOD INFORMATION

HOOD NO	TAG	FILTER(S)				LIGHT(S)				UTILITY CABINET(S)				FIRE SYSTEM	HOOD HANGING WEIGHT		
		TYPE	QTY	HEIGHT	LENGTH	EFFICIENCY @ 7 MICRONS	QTY	TYPE	WIRE GUARD	LOCATION	SIZE	TYPE	SIZE			MODEL #	QUANTITY
1	33	CAPTRATE SOLO FILTER	8	20"	16"	85% SEE FILTER SPEC	6	L55 SERIES E26	ND	LEFT	12"x60"x30"	TANK FS	4.0/4.0/4.0	DCV-1111	1 LIGHT 1 FAN	YES	1249 LBS

HOOD OPTIONS

HOOD NO	TAG	OPTION
1	33	FIELD WRAPPER 10.00' HIGH FRONT, LEFT. RIGHT END STANDOFF (FINISHED) 1' WIDE 60" LONG INSULATED. INSULATION FOR BACK OF HOOD. LEFT WIDE VERTICAL END PANEL 42" TOP WIDTH, 36" BOTTOM WIDTH, 80" HIGH INSULATED 430 SS. RIGHT WALL AS END PANEL.

PERFORATED SUPPLY PLENUM(S)

HOOD NO	TAG	POS	LENGTH	WIDTH	HEIGHT	TYPE	RISER(S)				
							MUA	LENG	DIA	CFM	SP
1	33	Front	152'	24'	6'	MUA	12'	28"	721	0.196'	
						MUA	12'	28"	721	0.196'	
						MUA	12'	28"	721	0.196'	
						AC	6'	28"	364	0.090'	
						AC	6'	28"	364	0.090'	

GREASE DUCT & CHIMNEY SPECIFICATIONS:
 PROVIDE GREASE DUCT EQUAL TO ECON-AIR MODEL "EDW" ROUND 20 GAUGE 430 STAINLESS STEEL DUCTWORK. MODEL "EDW" IS LISTED TO UL-1978 AND IS INSTALLED USING "V" CLAMP LOCKING CONNECTIONS SEALED WITH 3M FIRE BARRIER 2000 PLUS. MODEL "EDW" DOES NOT REQUIRE WELDING PROVIDING IT HAS BEEN INSTALLED PER THE MANUFACTURES INSTALLATION GUIDE.
 PROVIDE RATED ACCESS DOORS AT EVERY CHANGE IN DIRECTION AND EVERY 12' ON CENTER. PER MANUFACTURES LISTING MODEL "EDW" HORIZONTAL RUNS LESS THAN 75 FT. CAN BE SLOPED 1/16" PER 12", HORIZONTAL RUNS MORE THAN 75 FT. CAN BE SLOPED 3/16" PER 12". DUCT SHOULD BE SLOPED AS MUCH AS POSSIBLE TO REDUCE THE CHANCE OF GREASE ACCUMULATION IN HORIZONTAL RUNS.
 IF THE DUCT OR CHIMNEY IS WITHIN 18 INCHES OF COMBUSTIBLE MATERIAL, PROVIDE UL-2221 OR UL-103 HT LISTED DOUBLE WALL GREASE DUCT OR DOUBLE WALL CHIMNEY EQUAL TO ECON-AIR MODEL "EDW- 2R, 2R TYPE HT, 3R, OR 3Z" ROUND 20 GAUGE 430 STAINLESS INNER DUCT INSULATED WITH A 24 GAUGE 430 STAINLESS OUTER SHELL.

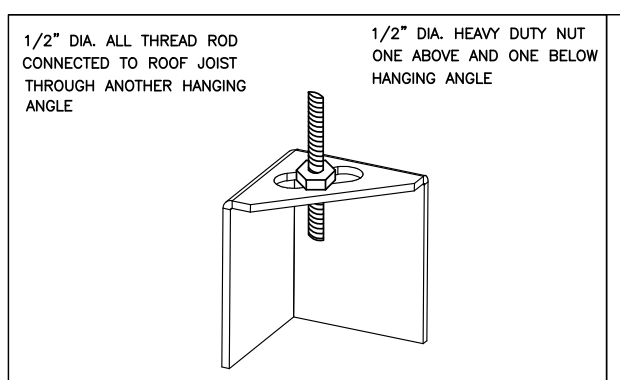
ECON-AIR RECOMMENDS THE USE OF LISTED, PRE-FABRICATED ROUND GREASE EXHAUST DUCT TO REDUCE STATIC PRESSURE IN THE SYSTEM, MINIMIZE INSTALLATION AND INSPECTION TIMES, AND ENSURE DUCT IS LIQUID TIGHT

HVAC DISTRIBUTION NOTE
 HIGH VELOCITY DIFFUSERS OR HVAC RETURNS SHOULD NOT BE PLACED WITHIN TEN (10) FEET OF THE EXHAUST HOOD. PERFORATED DIFFUSERS ARE RECOMMENDED.

VERIFY CEILING HEIGHT
 _____' - _____"
 HEIGHT REQUIRED TO VERIFY THAT HOOD FITS SPACE AND TO SIZE THE ENCLOSURE PANELS

CUSTOMER APPROVAL TO MANUFACTURE:

APPROVED AS NOTED	<input type="checkbox"/>
APPROVED WITH NO EXCEPTION TAKEN	<input type="checkbox"/>
REVISE AND RESUBMIT	<input type="checkbox"/>
SIGNATURE _____	_____
YOUR TITLE _____	DATE _____



HANGING ANGLE DETAILS

HOOD STYLE / MODEL	450 DEGREES cfm/ft.	600 DEGREES cfm/ft.	700 DEGREES cfm/ft.
CANOPY ND2	150	200	250
WITH END PANELS (15% reduction)	127.5	170	212.5
SLOPED SND-2	228	294	-
ISLAND ND-2WI	269	300	350
NDI	346	422	475

ETL HOOD LISTING DETAIL
 EXHAUST CFM=LENGTH OF HOOD X CFM/LIN.FT. (LOAD)
 SUPPLY CFM=EXHAUST CFM X PERCENTAGE REQUIRED
 TOTAL DUCT AREA=144 X CFM(FPM)
 DUCT LENGTH= TOTAL DUCT AREA

CAPTIVE-AIRE VENTILATOR DUCT SIZES ARE CALCULATED USING AN EXHAUST VELOCITY OF 1500-1800 FPM AND A SUPPLY VELOCITY OF 1000 FPM

CALCULATIONS UTILIZED
 CAPTIVE-AIRE HOODS ARE BUILT IN COMPLIANCE WITH:

3054804-001
 3054804-002
 Listed under ETL File number 3054804-001/002

BUILDING CODES
 CAPTIVE-AIRE HOODS HAVE OPTIONAL CLEARANCE REDUCTION SYSTEMS AVAILABLE AS FOLLOWS:

MATERIAL	CLEARANCE	REDUCTION SYSTEM
NON-COMBUSTIBLE	NONE REQUIRED	
LIMITED-COMBUSTIBLE	3" UNINSULATED STANDOFF	
COMBUSTIBLE	1" INSULATED STANDOFF	

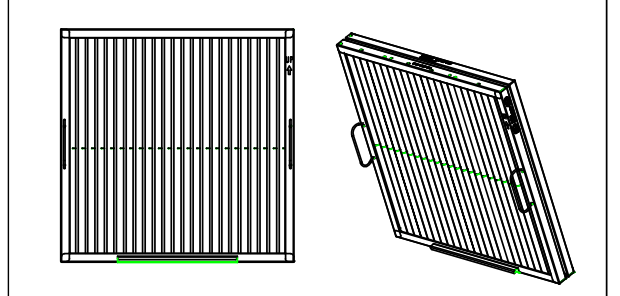
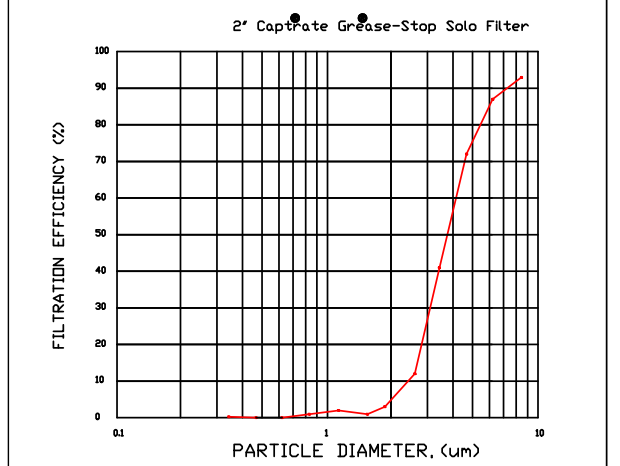
CLEARANCE TO COMBUSTIBLES

- INSTALLATION**
- ALL ELECTRICAL "FIELD" CONNECTIONS AND RELATED INTERCONNECTIONS BY ELECTRICAL CONTRACTORS.
 - ALL PLUMBING "FIELD" CONNECTIONS AND RELATED INTERCONNECTIONS BY PLUMBING CONTRACTORS.
 - HANGING BRACKETS LOCATED AND WELDED AS SHOWN ON PLANS. ALL OTHER HANGER MATERIALS PROVIDED BY INSTALLING CONTRACTORS.
 - ALL CONNECTIONS FROM CAPTIVE-AIRE DUCT PER MECHANICAL CONTRACTOR'S PLANS.
 - COOKING EQUIPMENT TO SHUTOFF IN EVENT OF FIRE.
 - EXHAUST FANS TO TURN ON IN EVENT OF FIRE.
 - ALL LIGHTS FIXTURE SHOWN INSTALLED BY CAPTIVE-AIRE ARE FACTORY PROVIDED. INTERCONNECTIONS BETWEEN HOODS AND TO SWITCHES BY ELECTRICAL CONTRACTORS.
 - LAMPS FOR LIGHT FIXTURES BY INSTALLING CONTRACTORS.
 - SEMI-RESISTANT ARE RESPONSIBILITY OF INSTALLING CONTRACTOR.
 - INSTALLING CONTRACTORS ASSUME ALL RELATED RESPONSIBILITY FOR VERIFICATION OF DIMENSIONAL DATA CONTAINED ON THESE DOCUMENTS FOR ACCURACY, INTEGRATION, AND ADMINISTRATION OF CODE REQUIREMENTS IN EFFECT PRIOR TO AN RELEASE FOR PRODUCTION OF EQUIPMENT SHOWN.

- BALANCE**
- KITCHEN HOODS MUST BE BALANCED WITH KITCHEN.
 - KITCHEN SHALL BE NEGATIVE WITH RESPECT TO DINING AREA.
 - RESTAURANT SHALL BE POSITIVE WITH RESPECT TO AMBIENT PRESSURE.

- ADDITIONAL**
- WRITTEN HOOD DIMENSIONS HAVE PRECEDENCE OVER SCALE.
 - SCOPE AND "LIMITS" OF THIS DOCUMENT MUST BE RECEIVED BY THE FACTORY PRIOR TO COMMENCEMENT OF FABRICATION.

GENERAL NOTES



CaptiveAir Captrate Solo Filter
 ETL Listed Grease Extracting Filters
 Made From 430 Stainless Steel

FILTER DETAIL

SEAL

PROJECT



CAVA_NORTH BRUNSWICK_NJ

222 GRAND AVE.
 NORTH BRUNSWICK, NJ 08902

DATE	DESCRIPTION
11/01/24	PRESCREEN COMMENTS
11/26/24	PERMIT SET
01/27/25	PERMIT ADDENDUM / CONSTRUCTION SET

This document contains information proprietary to Valerio Architects and is furnished in confidence for the limited purpose of evaluation, bidding or review. This document or its contents may not be used for any other purpose and may not be reproduced or disclosed to others without the prior written consent of Valerio Architects.

Captive Air

Date Modified: 02/28/24
 Date Created: AS SHOWN
 Scale: 3482-24-05
 Project No.: FA
 Drawn By: CAD File: 3482-250121- Construction Set_AB.vwx

REVISIONS

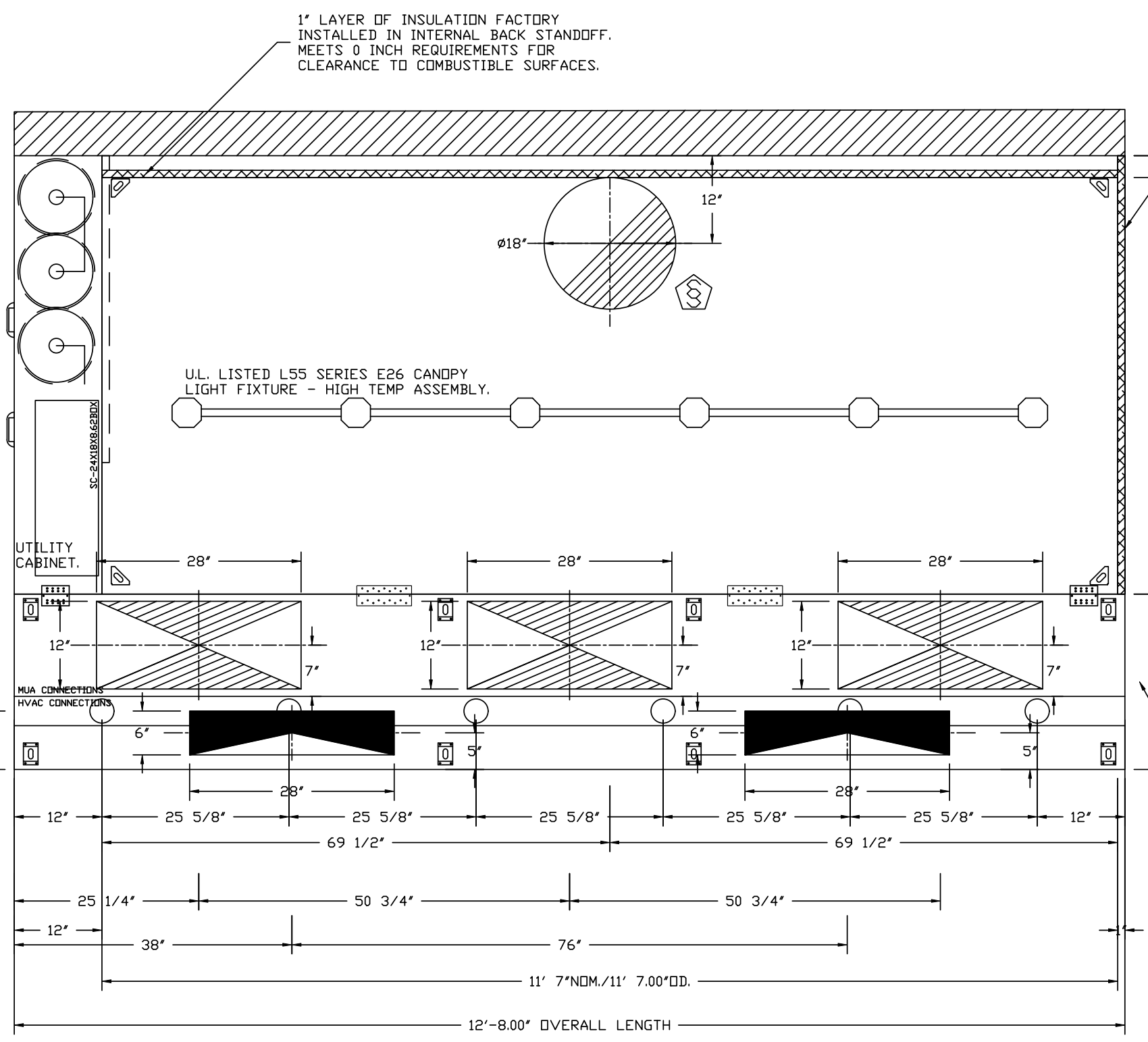
DESCRIPTION	DATE

recon.air
 Maryland Office
 8120 Woodmont Avenue, Suite 720, Bethesda, MD, 20814 PHONE: (800) 988-0881 FAX: 9192275931 EMAIL: reg2@reconair.com

Cava - North Brunswick, NJ
 2300 U.S. 1,
 North Brunswick Township, NJ 08902

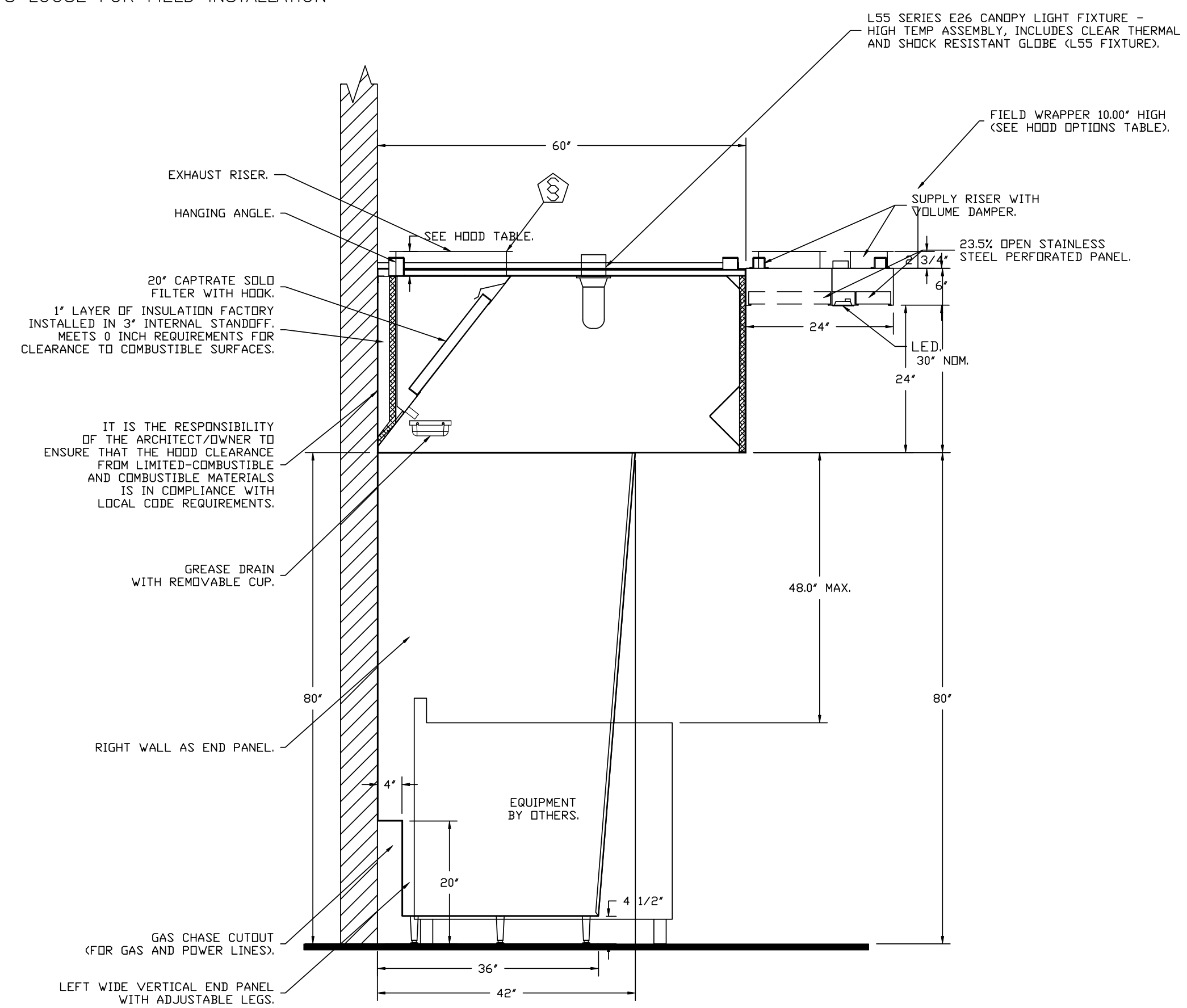
DATE: 7/15/2024
DWG.#: 6917126
DRAWN BY: AJP-32
SCALE: 3/4" = 1'-0"
MASTER DRAWING

SHEET NO.
 2

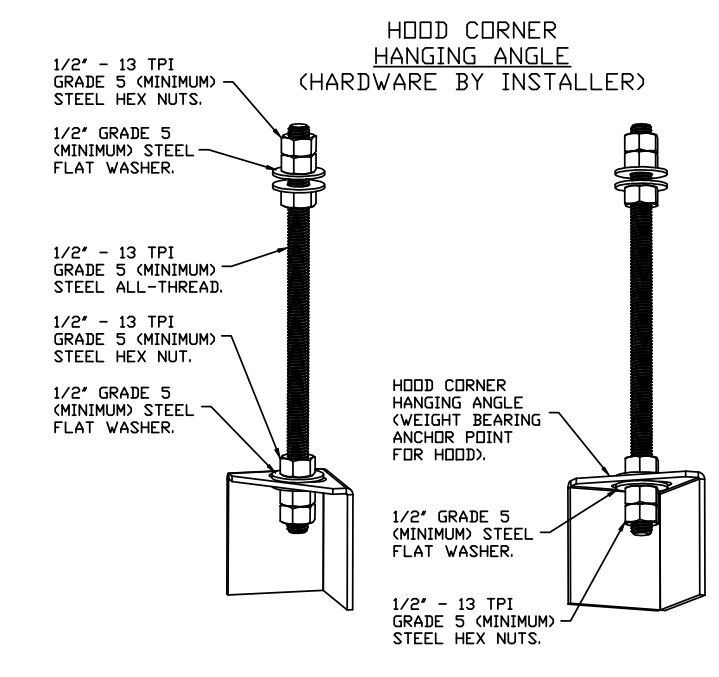


PLAN VIEW - HOOD #1 (33)
 11' 7.00" LONG 6030EX-2-ACPSP-F

ACPSP SHIPS LOOSE FOR FIELD INSTALLATION



SECTION VIEW - MODEL 6030EX-2-ACPSP-F
 HOOD - #1 (33)



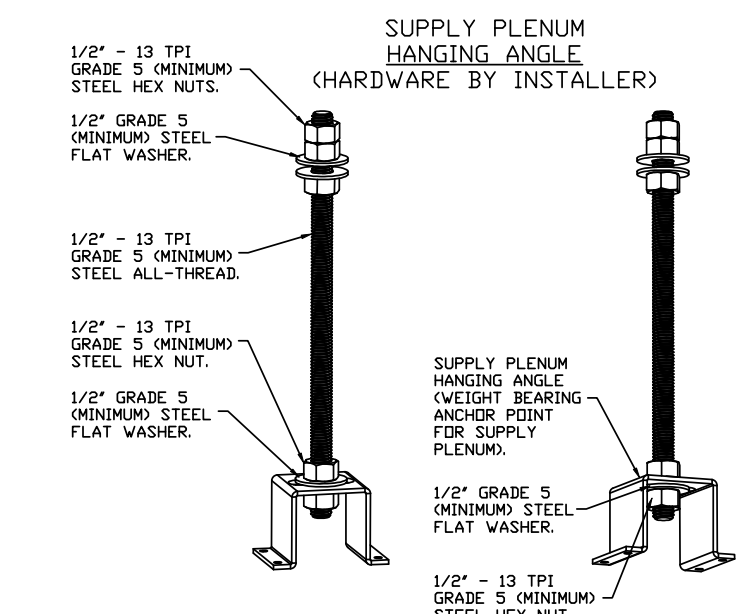
ASSEMBLY INSTRUCTIONS

HANGING ANGLE MUST BE SUPPORTED WITH 1/2" - 13 TPI GRADE 5 (MINIMUM) ALL-THREAD. SANDWICH HANGING ANGLES AND CEILING ANCHOR POINTS WITH 1/2" GRADE 5 (MINIMUM) STEEL FLAT WASHERS AND 1/2" - 13 TPI GRADE 5 (MINIMUM) STEEL FLAT WASHERS AND 1/2" - 13 TPI GRADE 5 (MINIMUM) HEX NUTS AS SHOWN. MUST USE DOUBLED HEX NUT CONFIGURATION BENEATH HOOD HANGING ANGLES AND ABOVE CEILING ANCHORS. MAINTAIN 1/4" OF EXPOSED THREADS BENEATH BOTTOM HEX NUT. TORQUE ALL HEX NUTS TO 57 FT-LBS.

CLEARANCE TO COMBUSTIBLES

HOODS #	SURFACE	*CLEARANCE
1	TOP	18"
	FRONT	0"
	BACK	0"
	LEFT	0"
	RIGHT	0"

- *0" CLEARANCE TO COMBUSTIBLES CONFORMS TO UL710 STANDARD.
 - HOOD MOUNTED UTILITY CABINETS REQUIRE 36" SERVICE CLEARANCE.



ASSEMBLY INSTRUCTIONS

HANGING ANGLE MUST BE SUPPORTED WITH 1/2" - 13 TPI GRADE 5 (MINIMUM) ALL-THREAD. SANDWICH HANGING ANGLES AND CEILING ANCHOR POINTS WITH 1/2" GRADE 5 (MINIMUM) STEEL FLAT WASHERS AND 1/2" - 13 TPI GRADE 5 (MINIMUM) HEX NUTS AS SHOWN. MUST USE DOUBLED HEX NUT CONFIGURATION ABOVE CEILING ANCHORS. SINGLE HEX NUT BENEATH HANGING ANGLE IS ACCEPTABLE FOR PSP HANGING ANGLES. MAINTAIN 1/4" OF EXPOSED THREADS BENEATH BOTTOM HEX NUT. TORQUE ALL HEX NUTS TO 57 FT-LBS.

SEAL

PROJECT



CAVA_NORTH BRUNSWICK_NJ

222 GRAND AVE.
 NORTH BRUNSWICK, NJ 08902

DATE	DESCRIPTION
11/01/24	PRESCREEN COMMENTS
11/26/24	PERMIT SET
01/27/25	PERMIT ADDENDUM / CONSTRUCTION SET

This document contains information proprietary to Valerio Architects and is furnished in confidence for the limited purpose of evaluation, bidding or review. This document or its contents may not be used for any other purpose and may not be reproduced or disclosed to others without the prior written consent of Valerio Architects.

Captive Air

Date Modified:	
Date Created:	02/28/24
Scale:	AS SHOWN
Project No.:	3482-24-05
Drawn By:	FA
CAD File:	3482-250121- Construction Set_AB.vwx

A9.3

REVISIONS	
DESCRIPTION	DATE

Recon·air
 Maryland Office
 8120 Woodmont Avenue, Suite 720, Bethesda, MD, 20814
 PHONE: (800) 888-0881 FAX: 919.227.9393 EMAIL: rgs2@reconair.com

Cava - North Brunswick, NJ
 2300 U.S. 1,
 North Brunswick Township, NJ 08902

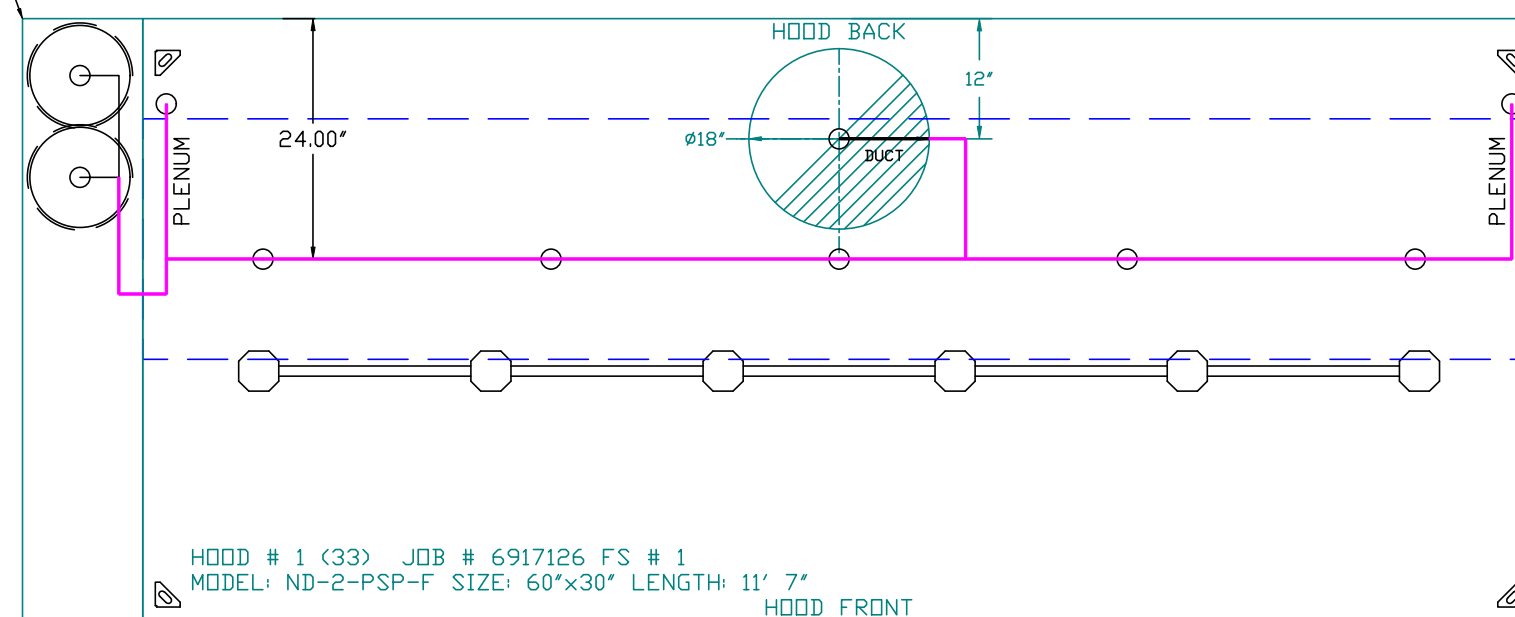
DATE:	7/15/2024
DWG.#:	6917126
DRAWN BY:	AJP-32
SCALE:	3/4" = 1'-0"
MASTER DRAWING	

SHEET NO.
3

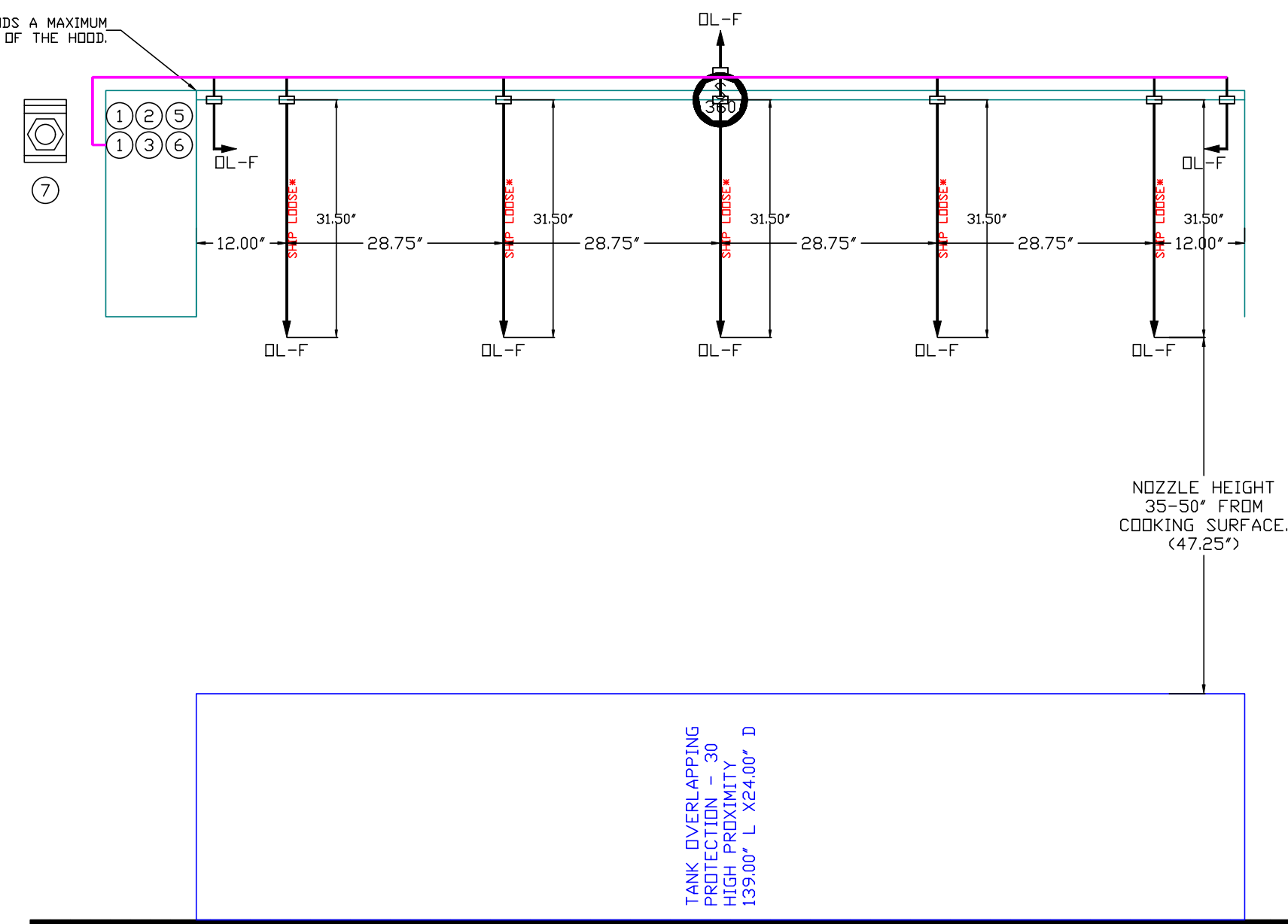
FIRE SYSTEM INFORMATION - JOB#6917126

FIRE SYSTEM NO	TAG	TYPE	SIZE	MAX FP	DESIGN FP	INSTALLATION	
						SYSTEM	LOCATION ON HOOD
1		TANK FS	4.0/4.0/4.0	60	37	FIRE CABINET LEFT	LEFT, HOOD 1

- SYSTEM REQUIRES A MINIMUM OF 7 FT OF EQUIVALENT PIPE LENGTH BETWEEN TANK AND NEAREST APPLIANCE NOZZLE FOR MOST APPLIANCES. EACH 90 DEGREE ELBOW ADDS 1.3 FT OF EQUIVALENT LENGTH. SEE MANUAL FOR DETAILS



FACTORY PIPING EXTENDS A MAXIMUM OF 6" ABOVE THE TOP OF THE HOOD.



FIRE SYSTEM PARTS LIST KEY

FIRE SYSTEM NO	TAG	KEY NUMBER - PART DESCRIPTION	QTY BY FACTORY	QTY BY DIST
0	0	TANK FIRE SUPPRESSION POST-DISCHARGE PROCEDURE UTILITY CABINET LABEL SHEET.	1	0
0	0	TANK FIRE SUPPRESSION MAINTENANCE GUIDE UTILITY CABINET LABEL SHEET.	1	0
0	0	12-F28821-2544-0T-360 DUCT FIRE THERMOSTAT WITH 12 FOOT WIRE LEADS. NO. CLDSE ON TEMP RISE AT 360°F (600X300).	1	0
0	0	32-00002 QUIK SEAL - 1/2" O.D.	1	0
0	0	4429K153 1/2" MALE NPT TO 1/2" FEMALE NPT ELBOW, BRASS.	3	0
0	0	4429K428 1/2" X 1/4" BRASS REDUCING BUSHING.	2	0
0	0	79525 1/2" 90 PRO-PRESS ELBOW WITH 1/2" NPT FEMALE CONNECTION, VIEGA.	2	0
0	0	79580 1/2" X 1/2" PRO-PRESS TEE X 1/2" NPT FEMALE CONNECTION, VIEGA.	3	0
0	0	87-120042-000 SECONDARY ACTUATOR VALVE (SVA) - SINGLE ACTUATOR, REQUIRES PRIMARY RELEASE ACTUATOR, TANK FIRE SUPPRESSION.	2	0
0	0	87-120045-000 HDSE, SECONDARY ACTUATOR HDSE, 7.5' BRAIDED STAINLESS STEEL, TANK FIRE SUPPRESSION.	2	0
0	0	87-30001-000 TANK - PRESSURIZED TANK USED FOR TANK FIRE SUPPRESSION.	3	0
0	0	87-30003-000 PRIMARY ACTUATOR KIT (PAK) - ACTUATOR AND RELEASE SOLENOID ASSEMBLY, ONE NEEDED PER FIRE SYSTEM, SUPERVISED, TANK FIRE SUPPRESSION.	1	0
0	0	87-30015-000 HARDWARE, SVA BOLTS, TANK FIRE SUPPRESSION.	12	0
0	0	9095459PC PRO PRESS 1/2 PRESS X PRESS 90 ELBOW L.B.	6	0
0	0	9097200PC PRO PRESS PC611 1/2 PRESS TEE L.B.	7	0
0	0	986944115 HARDWARE, DATANKLOCK LOCKING BRACKET SQUARE NUTS 5/16" ZINC, TANK FIRE SUPPRESSION.	6	0
0	0	A034332 JUNCTION BOX FOR MANUAL PULL STATION, 1.5" DEEP BACK BOX, RED COLOR.	1	0
0	0	A31484 1/4" NPT SCHRAEDER VALVE AND CAP, JB INDUSTRIES, 1/4" FLARE X 1/4" NPT HALF UNION USED ON TANK SERVICE PORT.	2	0
0	0	B1145 3/8" BLACK IRON 90 ELL.	3	0
0	0	DATANKLOCK DISCHARGE ADAPTER TANK LOCKING PLATE FOR FIRE SYSTEM TANK INSTALLATION IN UTILITY CABINETS, TANK FIRE SUPPRESSION.	3	0
0	0	TANK STRAP TANK STRAP - USED FOR TANK FIRE SUPPRESSION.	9	0
0	0	TFS-UCTANKBRACKET TANK BRACKET FOR FIRE SYSTEM TANK INSTALLATION IN UTILITY CABINETS, TANK FIRE SUPPRESSION.	3	0
0	0	WK-283952-000 DISCHARGE ADAPTER, TANK FIRE SUPPRESSION.	3	0
16	16	79210 1/2" X 3/8" NPT MALE ADAPTER, VIEGA.	8	0
16	16	16-F NEZZLE - TANK PROTECTION APPLIANCE COVERAGE NOZZLE (INCLUDES METAL BLDW OFF CAP, LANYARD, USED WITH CHROME-PLATED PIPE).	8	0
26	26	OSA-3/8 QUIK SEAL - 3/8" O.D.	8	0
24	24	A034331 24VDC SINGLE ACTION MANUAL ACTUATION DEVICE (PUSH/PULL STATION) WITH PROTECTIVE COVER, ONE (1) NORMALLY OPEN CONTACT, RED COLOR.	1	0

NOTES

- FIELD PIPE DROPS AS SHOWN
- PIPING, ELBOWS, TEES, AND NOZZLES SUPPLIED BY CAS.
- FIELD INSTALLED DROP; FACTORY WILL PROVIDE QTY 2 60IN LONG PIECES OF CHROME PLATED PIPING SHIPPED LOOSE TO BE FIELD-INSTALLED.
- SHIP LOOSE DROP; FACTORY WILL PROVIDE THE EXACT CHROME PIPE LENGTH NEEDED
- SHIPPED LOOSE TO BE FIELD-INSTALLED.
- RELOCATE NOZZLES IF FLOW PATTERN IS BLOCKED BY SHELVING, SALAMANDERS, ETC.
- OVERLAPPING COVERAGE SHALL NOT BE USED ON ANY APPLIANCE WITH AN OBSTRUCTION.
- IF APPLICABLE, EXTENDED PRE-PIPED DROPS ARE SHIPPED LOOSE.
- FACTORY PIPING EXTENDS A MAXIMUM OF 6" ABOVE THE TOP OF THE HOOD.

- APPLIANCE DIMENSIONS LISTED REPRESENT THE COOKING SURFACE SIZE, NOT THE OVERALL APPLIANCE SIZE.

- THIS FIRE SYSTEM COMPLIES WITH UL 300 REQUIREMENTS.

- DL-F NOZZLE PART NUMBER REPLACES 3070-3/8H-10-SS

JOB #: 6917126.
 JOB NAME: CAVA - NORTH BRUNSWICK, NJ.

SYSTEM SIZE: TANK-SP-2 DESIGN FP: 37, MAXIMUM FP: 40.
 HOOD # 1 11' 7.00" LONG X 60" WIDE X 30" HIGH.
 RISER # 1 SIZE: 18" DIA.
 HOOD # 1 METAL BLOW-OFF CAPS INCLUDED.

- HEAVY-DUTY APPLIANCES (RATED 600°F) WILL REQUIRE AN ADDITIONAL DOWNSTREAM FIRESTAT IN THE EVENT THAT THE DUCTWORK CONTAINS ANY HORIZONTAL RUNS OVER 25 FT IN LENGTH.
- MEDIUM TO LIGHT-DUTY APPLIANCES (RATED 450°F) WILL NOT REQUIRE ANY ADDITIONAL DOWNSTREAM DETECTION.

AGENT DISTRIBUTION PIPING LIMITATIONS	
PIPE SECTION	MAX PIPE LENGTH (FT)
MAX SUPPLY LINE TO FIRST OVERLAPPING NOZZLE	42
OVERLAPPING NOZZLE APPLIANCE BRANCH	10
DEDICATED NOZZLE APPLIANCE BRANCH	10

LEGEND - FIRE CABINET TANK SYSTEM

- 4 GALLON TANK.
- PRIMARY ACTUATOR RELEASE.
- SECONDARY ACTUATOR RELEASE.
- PRESSURE SUPERVISION SWITCH.
- PRIMARY HOSE ASSEMBLY.
- SECONDARY HOSE ASSEMBLY.
- REMOTE MANUAL ACTUATION DEVICE.

INCLUDES: FIELD INSTALLATION AND HOOKUP DURING NORMAL BUSINESS HOURS BY CERTIFIED INSTALLERS ONLY IN THE LOCATION NOTED ABOVE. TWO SITE VISITS ONLY (ONE VISIT TO SET PULL STATION & SYSTEM HOOKUP AND ONE VISIT FOR ONE TEST); ADDITIONAL VISITS WILL RESULT IN ADDITIONAL CHARGES, ONE MECHANICAL OR ELECTRICAL GAS VALVE PER SYSTEM AT A MAXIMUM SIZE OF 2". PERMIT, AND SYSTEM TEST.
 EXCLUDES: UNION LABOR & PREVAILING WAGE (LABOR & WAGES WILL BE ADDED IF APPLICABLE), GAS VALVE INSTALLATION, ELECTRICAL HOOKUP AND CONNECTIONS, HANGING OF FIRE CABINET, SHUNT TRIP, HANDHELD EXTINGUISHER(S), ON-SITE RE-PIPING DUE TO EQUIPMENT LAYOUT CHANGES.

SEAL

PROJECT



CAVA_NORTH BRUNSWICK_NJ

222 GRAND AVE.
 NORTH BRUNSWICK, NJ 08902

DATE	DESCRIPTION
11/01/24	PRESCREEN COMMENTS
11/26/24	PERMIT SET
01/27/25	PERMIT ADDENDUM / CONSTRUCTION SET

This document contains information proprietary to Valerio Architects and is furnished in confidence for the limited purpose of evaluation, bidding or review. This document or its contents may not be used for any other purpose and may not be reproduced or disclosed to others without the prior written consent of Valerio Architects.

Captive Air

Date Modified: 02/28/24
 Date Created: 02/28/24
 Scale: AS SHOWN
 Project No.: 3482-24-05
 Drawn By: FA
 CAD File: 3482-250121- Construction Set_AB.vwx

REVISIONS

DESCRIPTION	DATE

recon·air
 Maryland Office
 8120 Woodmont Avenue, Suite 720, Bethesda, MD, 20814 PHONE: (800) 888-0881 FAX: 9192275931 EMAIL: reg32@reconair.com
 www.reconair.com

Cava - North Brunswick, NJ
 2300 U.S. 1,
 North Brunswick Township, NJ 08902

DATE: 7/15/2024
DWG.#: 6917126
DRAWN BY: AJP-32
SCALE: 3/4" = 1'-0"
MASTER DRAWING

SHEET NO.
 4

DOAS/RTU FAN SCHEDULE - JOB#6917126

FAN INFORMATION										ELECTRICAL INFORMATION					COOLING INFORMATION						REHEAT INFORMATION				GAS HEAT INFORMATION				NOTES													
FAN UNIT NO	TAG	QTY	DOAS/RTU MODEL #	MANUFACTURER	BLOWER	RETURN AIR CFM	MAX OUTSIDE AIR CFM	TOTAL CFM	WEIGHT (LBS)	ESP	HP	PHASE	VOLT	MCA	MDCP	OUTSIDE AIR DB	OUTSIDE AIR WB	MIXED AIR DB	MIXED AIR WB	LEAVING AIR DB	LEAVING AIR WB	DP	TOTAL	SENS.	IEER	ISMRE	DISCHARGE DB	DISCHARGE WB		CAPACITY DESIRED	CAPACITY MAX	MOISTURE REMOVAL RATE	GAS TYPE	INPUT BTU _s	OUTPUT BTU _s	TEMP RISE	REQUIRED INPUT GAS PRESSURE					
2	MUA-1	1	EARTU1-1200-15-ST-MPU	ECON-AIR	15P-1	0	2163	2163	1190	0.500	2.00	3	208	28.4A	30A	90.0°F	74.0°F	90.0°F	74.0°F	72.2°F	65.4°F	62.0°F	66.0	MBH	40.2	MBH	17.9	6.1	90.0°F	70.9°F	41.3	MBH	0.2	MBH	23.5	LBS/HR	NATURAL	196968	159544	62°F	7 IN. W.C. - 14 IN. W.C.	1,2,3,4,5,6,7,8,9,10,11,12,13,14

NOTES:
 1. INVERTER SCROLL COMPRESSOR WITH INTEGRATED OIL SENSOR. DIGITAL OR STAGED SCROLL NOT AN APPROVED EQUAL.
 2. DIRECT DRIVE PLENUM BLOWER. BELT DRIVEN BLOWERS ARE NOT ACCEPTABLE.
 3. INTEGRATED MONITORING VIA CELLULAR CONNECTION BY MANUFACTURER.
 4. REFRIGERATION PRESSURE MONITORING ON HIGH AND LOW PRESSURE SIDE OF SYSTEM INCLUDED THROUGH DIGITAL INTERFACE.
 5. EC MOTOR CONDENSING FANS.
 6. ELECTRONIC EXPANSION VALVE. TXV NOT ACCEPTABLE.
 7. SUCTION LINE ACCUMULATOR.
 8. FACTORY COMMISSIONING WITH 5 YEAR PARTS WARRANTY, 25 YEAR WARRANTY ON STAINLESS STEEL HEAT EXCHANGER.
 9. AVERAGING INTAKE, EVAP AND DISCHARGE TEMPERATURE SENSORS (DISCHARGE SENSOR TO BE FACTORY MOUNTED WITHIN UNIT).
 10. 81% EFFICIENT FURNACE, WITH MODULATING INDUCER TO MAINTAIN CONSTANT COMBUSTION EFFICIENCY ACROSS FIRING RANGE. 6:1 TURNDOWN WITH NG AND 5:1 TURNDOWN WITH LP.
 11. SUPPLY CFM MONITORING INTEGRAL TO UNIT WITH CFM MEASUREMENT INCLUDED THROUGH DIGITAL INTERFACE.
 12. FULLY MODULATING HOT GAS REHEAT.
 13. 1" EXTERIOR DUAL-WALL CONSTRUCTION W/ R-4.3 INSULATION-MINIMUM 24GA EXTERIOR W/ 18GA BASE.
 14. DOWN DISCHARGE/NO RETURN.

FAN OPTIONS

FAN UNIT NO	TAG	QTY	DESCRIPTION
1	KEF-1	1	GREASE BOX
		1	FAN BASE CERAMIC SEAL - DU/DR180HFA - INSTALLED AT PLANT - FOR GREASE DUCTS
		1	2 YEAR PARTS WARRANTY
		1	INLET PRESSURE GAUGE, 0-35"
		1	MANIFOLD PRESSURE GAUGE, 0 TO 10" WC, 1 FURNACE
		1	TOTAL CFM MONITORING
		1	INTAKE FIRESTAT SET TO 135°F
		1	FREEZESTAT
		1	DISCHARGE FIRESTAT SET TO 240°F
		1	SHIP LOOSE GAS STRAINER 3/4"
		1	CASLINK BUILDING MONITORING SYSTEM - INTERNET OR CELLULAR CONNECTION REQUIRED
		1	2" MERV 13 FILTERS FOR RTU1 (QTY. 4)
		1	2" MERV 8 FILTERS FOR RTU1 (QTY. 4)
		1	RTU1 DOWN DISCHARGE
		1	RTU1 CURB DUCT HANGER
2	MUA-1	1	5 TON MODULATING COOLING OPTION, 208/230V. R410A REFRIGERANT, VARIABLE SPEED COMPRESSOR, DL ECM CONDENSING FAN
		1	COMMERCIAL SMOKE DETECTOR/ALARM INTERLOCK - ALARM SUPPLIED BY OTHERS
		1	120V FIRE INPUT
		1	SINGLE POINT ELECTRICAL CONNECTION FOR RTU1. 750VA TRANSFORMER USED. IF A NON-DCV PREWIRE CONTROLS THIS UNIT, THE #28, #47, #4A, OR #E2 PREWIRE OPTION MUST BE SELECTED. DOES NOT PROVIDE SUPPLY STARTER IN PREWIRE
		1	RTU1 NO RETURN - 100% DA - MPU
		1	RTU1 FIXED 100% DA INTAKE CONTROL
		1	UNIT MOUNTED VFD CONFIGURED FOR DCV
		1	LOAD REACTOR MOUNTED IN FAN
		1	1BT ONLY REHEAT
		1	5 YEAR ENTIRE UNIT PARTS WARRANTY, 10 YEAR ENTIRE UNIT PARTS WARRANTY WITH REMOTE MONITORING AND CAPTIVEAIR SERVICE CONTRACT, 25 YEAR STAINLESS STEEL FURNACE PARTS WARRANTY (SEE ADDITIONAL DETAILS)
		1	EXTERIOR GAS CONNECTION PROVIDED BY FACTORY WITH QUICK SEAL AND ANTI-ROTATION BRACKET

EXHAUST FAN INFORMATION - JOB#6917126

FAN UNIT NO	TAG	QTY	FAN UNIT MODEL #	MANUFACTURER	CFM	ESP	RPM	MOTOR ENCL.	HP	BHP	PHASE	VOLT	FLA	DISCHARGE VELOCITY	WEIGHT (LBS)	SONES
1	KEF-1	1	EADU180H	ECON-AIR	2606	1.500	1252	TEFC,PREMIUM	2.000	1.3520	3	208	7.3	602 FPM	200	17.5

GREASE DUCT & CHIMNEY SPECIFICATIONS:
 PROVIDE GREASE DUCT EQUAL TO ECON-AIR MODEL "EDW" ROUND 20 GAUGE 430 STAINLESS STEEL DUCTWORK. MODEL "EDW" IS LISTED TO UL-1978 AND IS INSTALLED USING "V" CLAMP LOCKING CONNECTIONS SEALED WITH 3M FIRE BARRIER 2000 PLUS. MODEL "EDW" DOES NOT REQUIRE WELDING PROVIDING IT HAS BEEN INSTALLED PER THE MANUFACTURES INSTALLATION GUIDE.
 PROVIDE RATED ACCESS DOORS AT EVERY CHANGE IN DIRECTION AND EVERY 12' ON CENTER. PER MANUFACTURES LISTING MODEL "EDW" HORIZONTAL RUNS LESS THAN 75 FT. CAN BE SLOPED 1/16" PER 12", HORIZONTAL RUNS MORE THAN 75 FT. CAN BE SLOPED 3/16" PER 12". DUCT SHOULD BE SLOPED AS MUCH AS POSSIBLE TO REDUCE THE CHANCE OF GREASE ACCUMULATION IN HORIZONTAL RUNS.
 IF THE DUCT OR CHIMNEY IS WITHIN 18 INCHES OF COMBUSTIBLE MATERIAL, PROVIDE UL-2221 OR UL-103 HT LISTED DOUBLE WALL GREASE DUCT OR DOUBLE WALL CHIMNEY EQUAL TO ECON-AIR MODEL "EDW- 2R, 2R TYPE HT, 3R, OR 3Z" ROUND 20 GAUGE 430 STAINLESS INNER DUCT INSULATED WITH A 24 GAUGE 430 STAINLESS OUTER SHELL.

CUSTOMER APPROVAL TO MANUFACTURE:

APPROVED AS NOTED	<input type="checkbox"/>
APPROVED WITH NO EXCEPTION TAKEN	<input type="checkbox"/>
REVISE AND RESUBMIT	<input type="checkbox"/>

SIGNATURE _____
 YOUR TITLE _____ DATE _____

FAN ACCESSORIES

FAN UNIT NO	TAG	EXHAUST			SUPPLY			
		GREASE CUP	GRAVITY DAMPER	WALL MOUNT	SIDE DISCHARGE	GRAVITY DAMPER	MOTORIZED DAMPER	WALL MOUNT
1	KEF-1	YES						

CURB ASSEMBLIES

NO	DN FAN	TAG	WEIGHT	ITEM	SIZE
1	# 1	KEF-1	34 LBS	CURB	26.500"W X 26.500"L X 26.000"H VENTED HINGED.
2	# 2	MUA-1	103 LBS	CURB	41.000"W X 71.000"L X 20.000"H INSULATED.

HMI SCHEDULE

UNIT NUMBER	HMI #	HMI LOCATION	TEMP AVERAGING	MODBUS ADDRESS
FAN #2	HMI #1 - UNIT	HMI # 1 MOUNTED IN UNIT	NOT AVERAGED	55
FAN #2	HMI #2 - SPACE	HMI # 1 KITCHEN	AVERAGED	56

SEAL

PROJECT



CAVA_NORTH BRUNSWICK_NJ

222 GRAND AVE.
 NORTH BRUNSWICK, NJ 08902

DATE	DESCRIPTION
11/01/24	PRESCREEN COMMENTS
11/26/24	PERMIT SET
01/27/25	PERMIT ADDENDUM / CONSTRUCTION SET

This document contains information proprietary to Valerio Architects and is furnished in confidence for the limited purpose of evaluation, bidding or review. This document or its contents may not be used for any other purpose and may not be reproduced or disclosed to others without the prior written consent of Valerio Architects.

Captive Air

DATE:	7/15/2024
DWG.#:	6917126
DRAWN BY:	AJP-32
SCALE:	3/4" = 1'-0"
MASTER DRAWING	

A9.5

REVISIONS

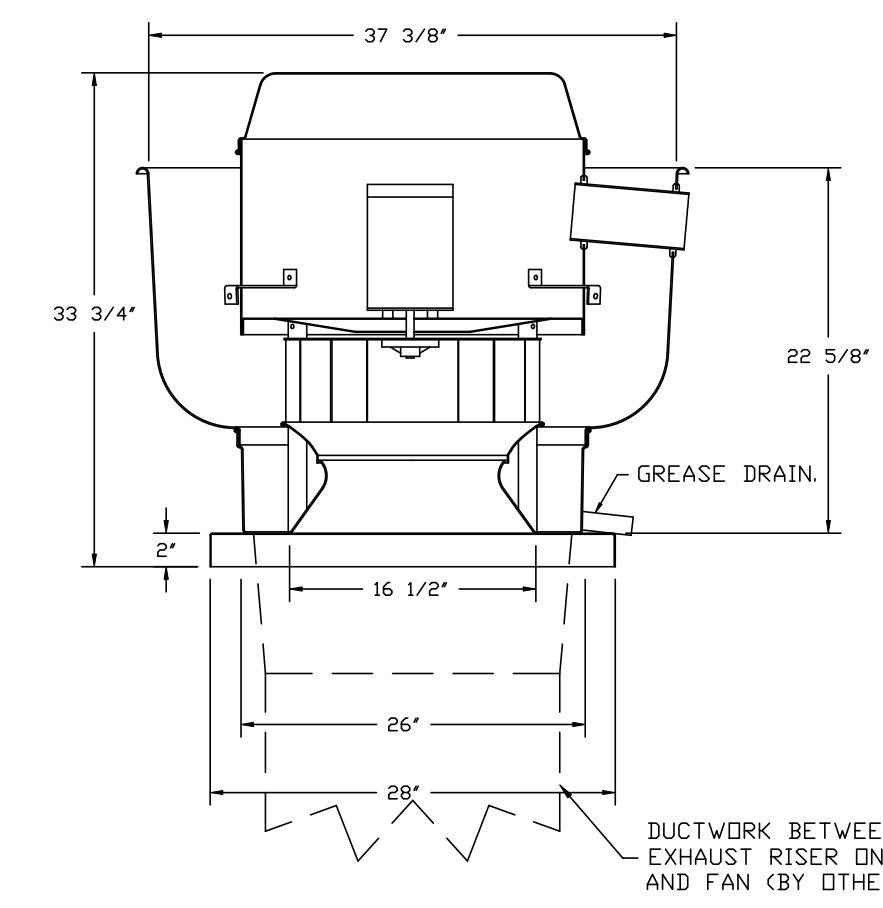
DESCRIPTION	DATE

Recon·air
 Maryland Office
 5120 Woodmont Avenue, Suite 720, Bethesda, MD, 20814
 PHONE: (800) 888-0881 FAX: 9102275931 EMAIL: reg32@reconair.com
 www.reconair.com

Cava - North Brunswick, NJ
 2300 U.S. 1,
 North Brunswick Township, NJ 08902

SHEET NO.
5

FAN #1_FADU180H - EXHAUST FAN (KEF-1)



FEATURES:

- DIRECT DRIVE CONSTRUCTION (NO BELTS/PULLEYS).
- ROOF MOUNTED FANS.
- RESTAURANT MODEL.
- UL705 AND UL762 AND ULC-S645
- VARIABLE SPEED CONTROL.
- INTERNAL WIRING.
- THERMAL OVERLOAD PROTECTION (SINGLE PHASE).
- HIGH HEAT OPERATION 300°F (149°C).
- GREASE CLASSIFICATION TESTING.
- NEMA 3R SAFETY DISCONNECT SWITCH.

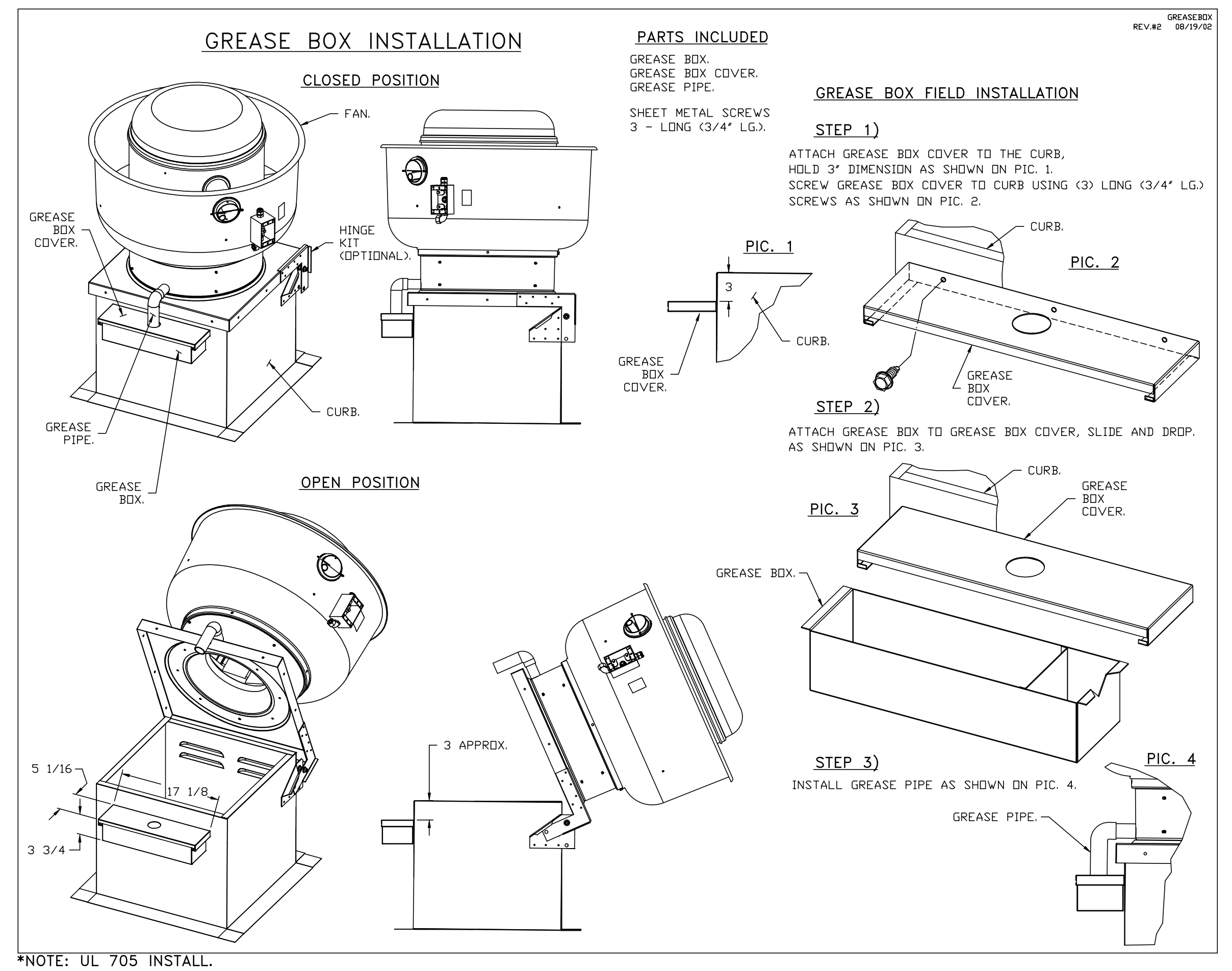
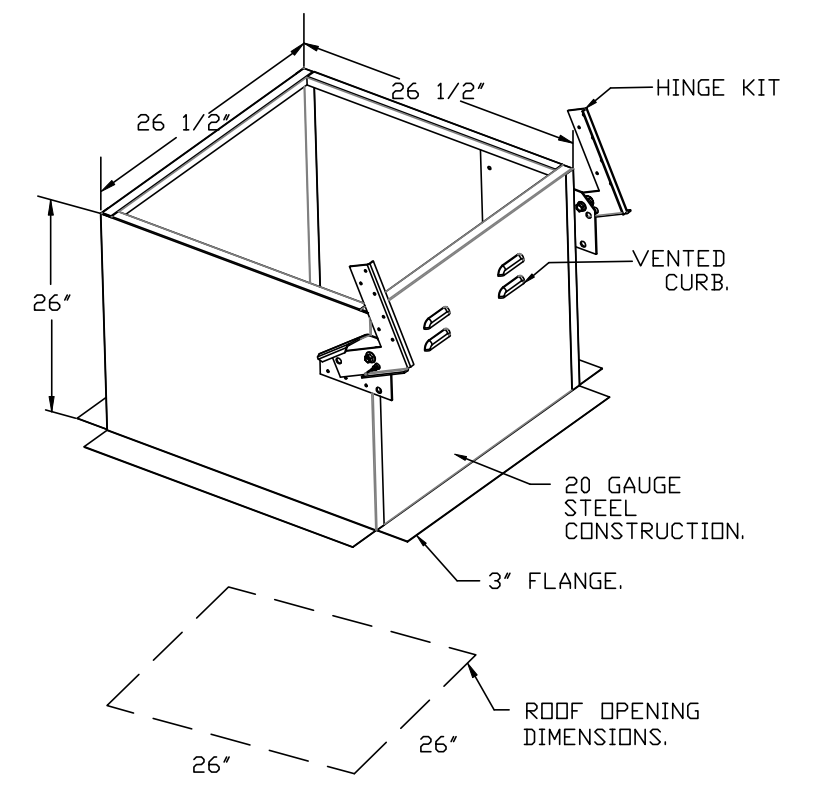
NORMAL TEMPERATURE TEST
 EXHAUST FAN MUST OPERATE CONTINUOUSLY WHILE EXHAUSTING AIR AT 300°F (149°C) UNTIL ALL FAN PARTS HAVE REACHED THERMAL EQUILIBRIUM, AND WITHOUT ANY DETERIORATING EFFECTS TO THE FAN WHICH WOULD CAUSE UNSAFE OPERATION.

ABNORMAL FLARE-UP TEST
 EXHAUST FAN MUST OPERATE CONTINUOUSLY WHILE EXHAUSTING BURNING GREASE VAPORS AT 600°F (316°C) FOR A PERIOD OF 15 MINUTES WITHOUT THE FAN BECOMING DAMAGED TO ANY EXTENT THAT COULD CAUSE AN UNSAFE CONDITION.

DETAILS

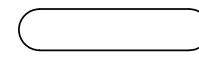
- GREASE BOX.
- FAN BASE CERAMIC SEAL - DU/DR180HFA
- INSTALLED AT PLANT - FOR GREASE DUCTS.
- 2 YEAR PARTS WARRANTY.

DUCTWORK BETWEEN EXHAUST RISER ON HOOD AND FAN (BY OTHERS).

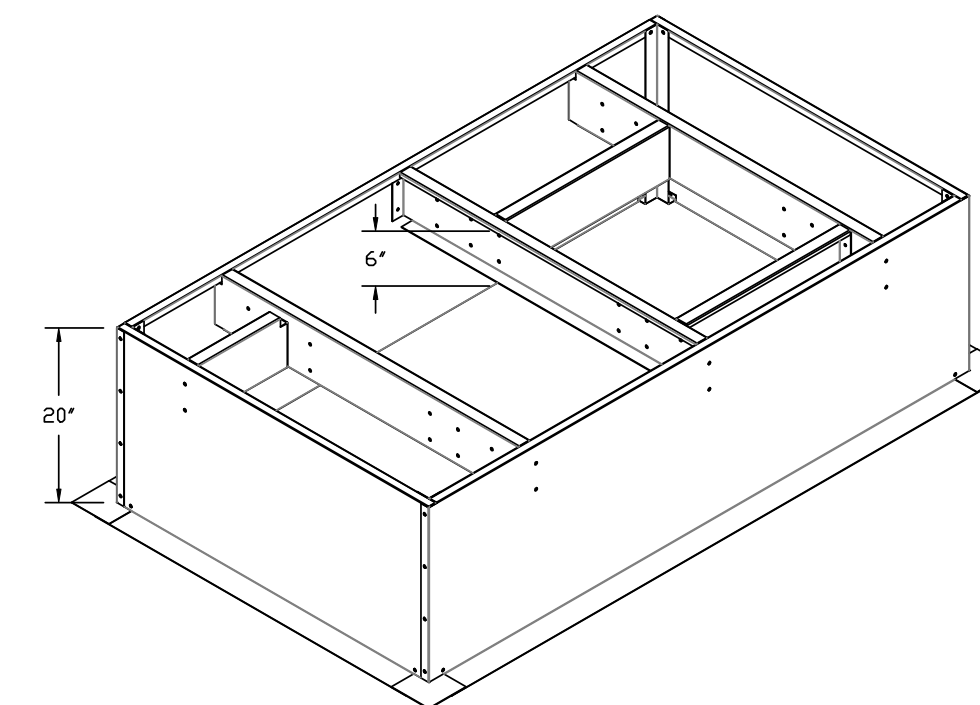
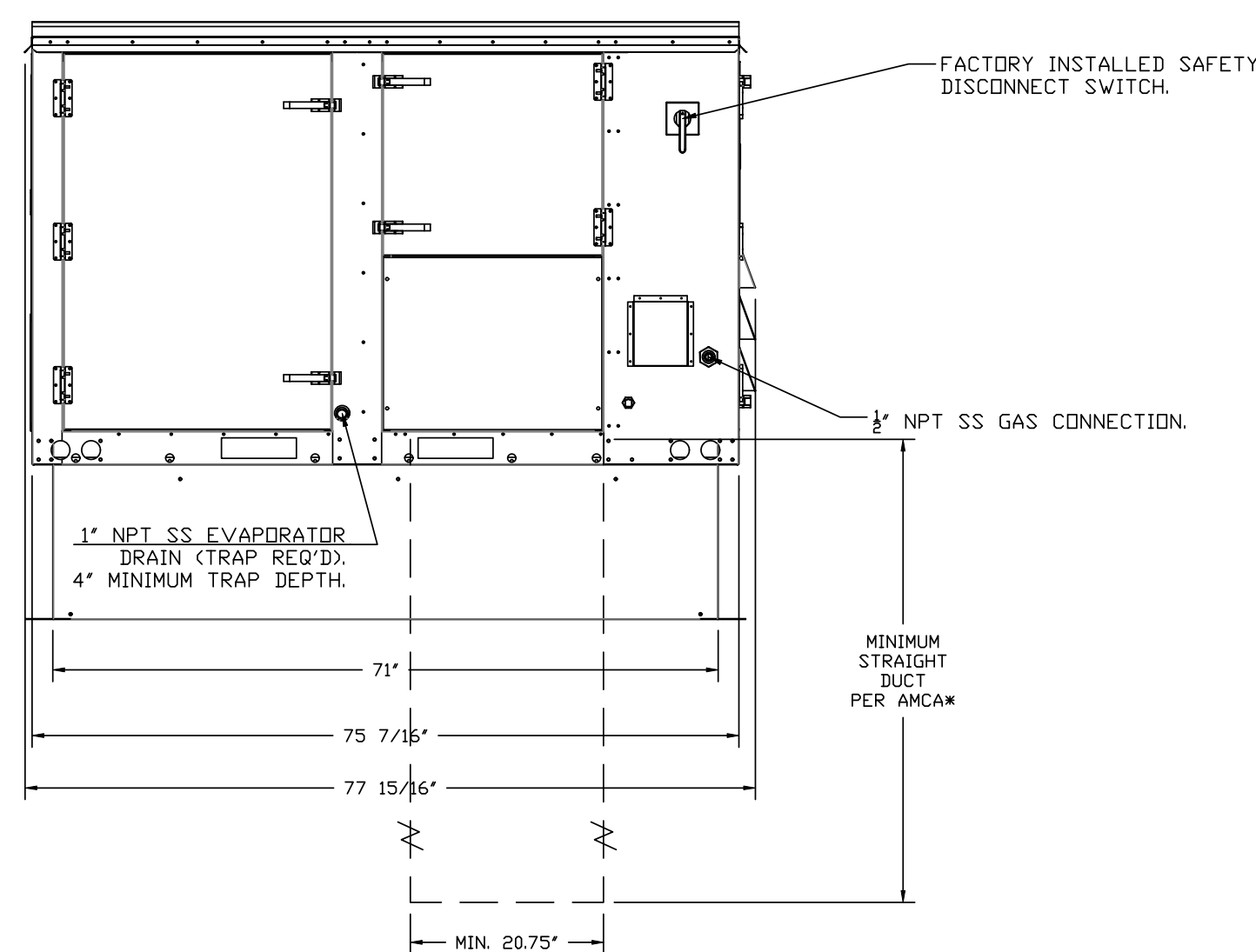
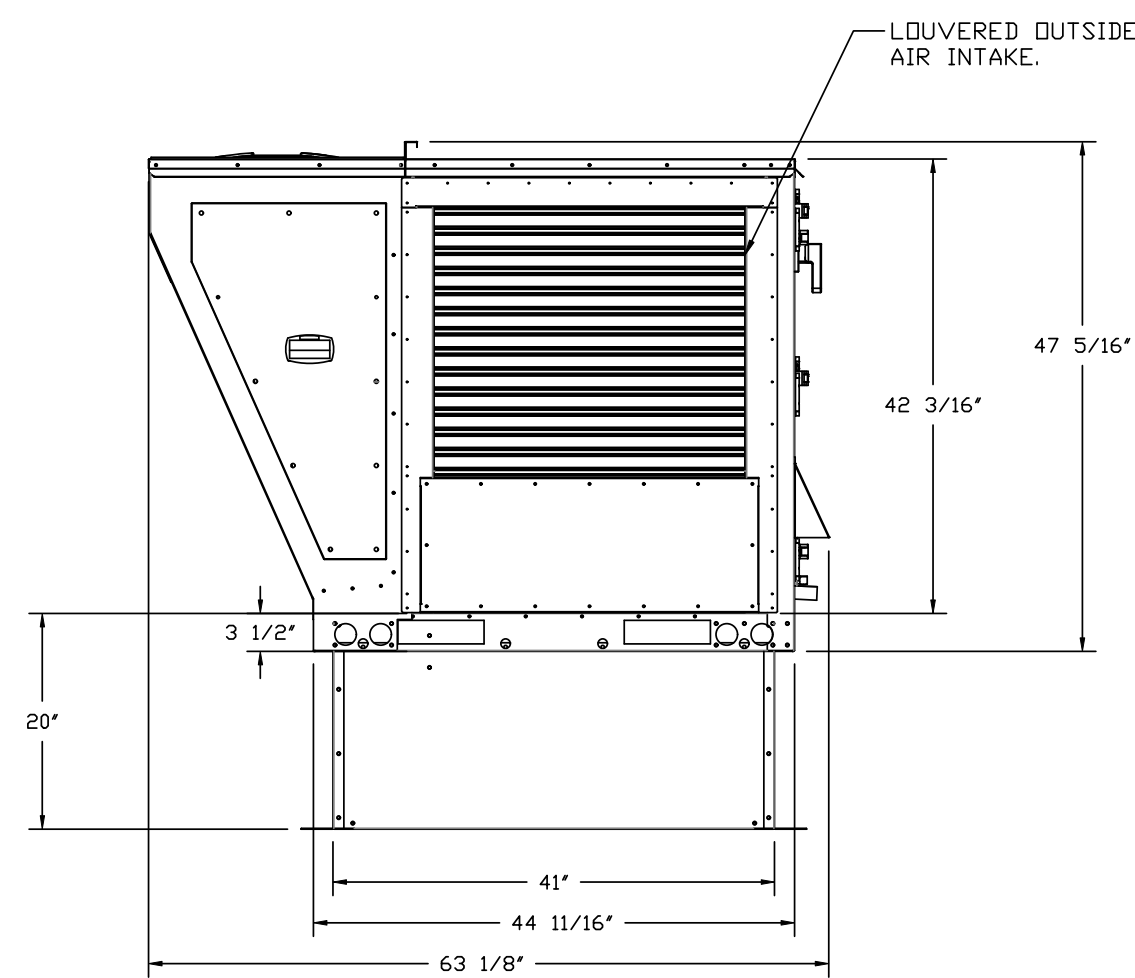
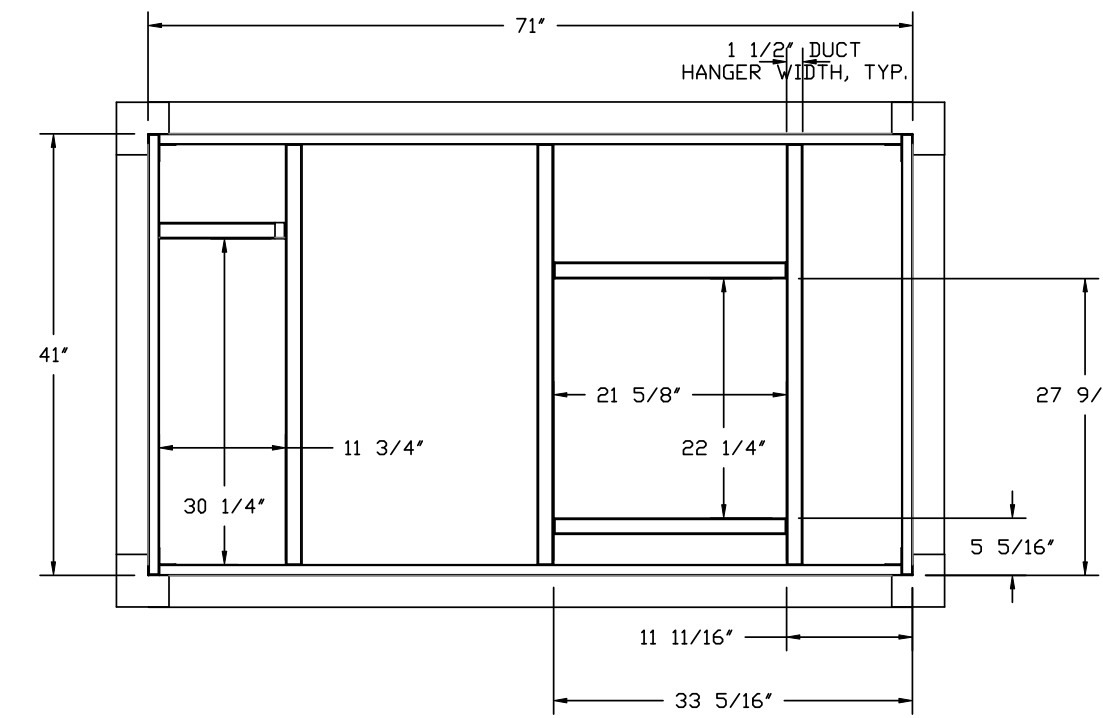
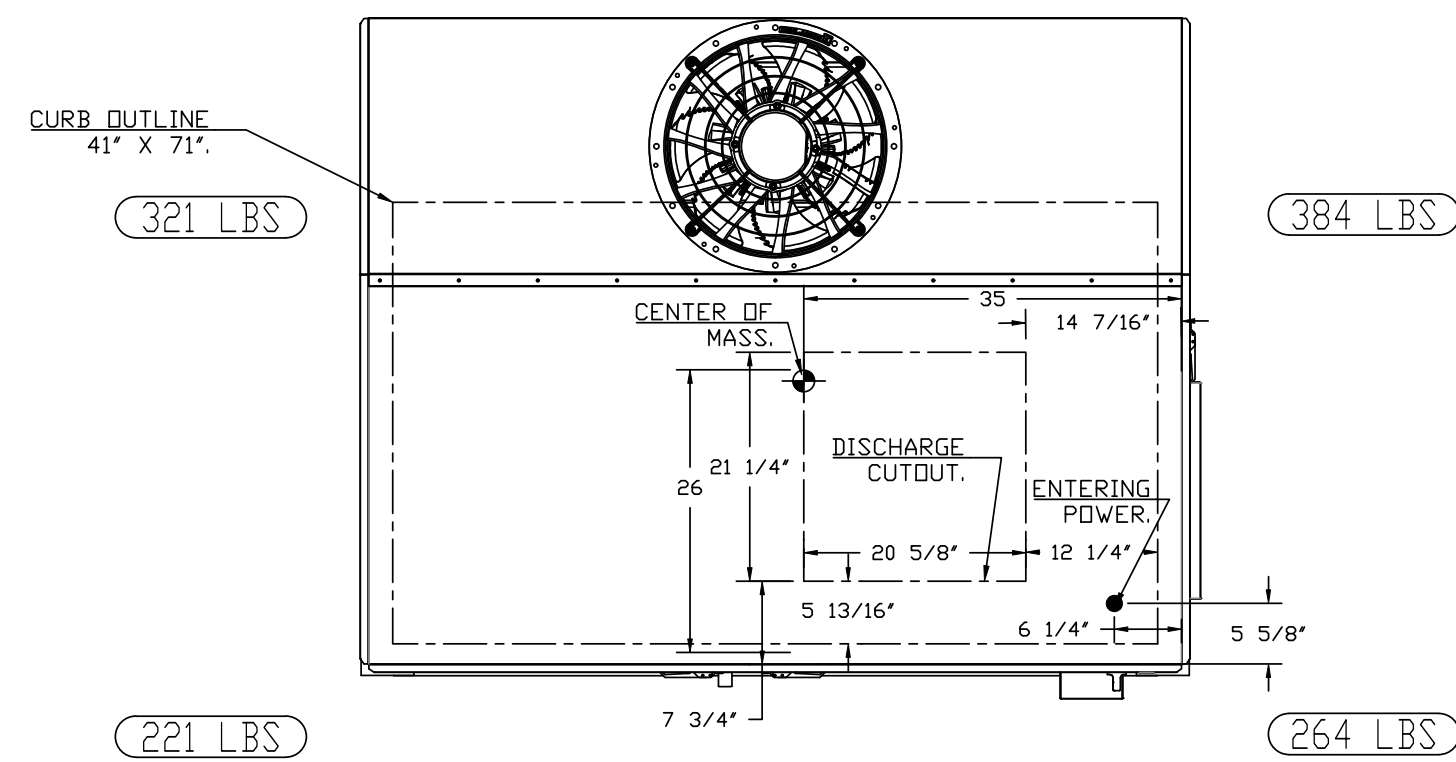
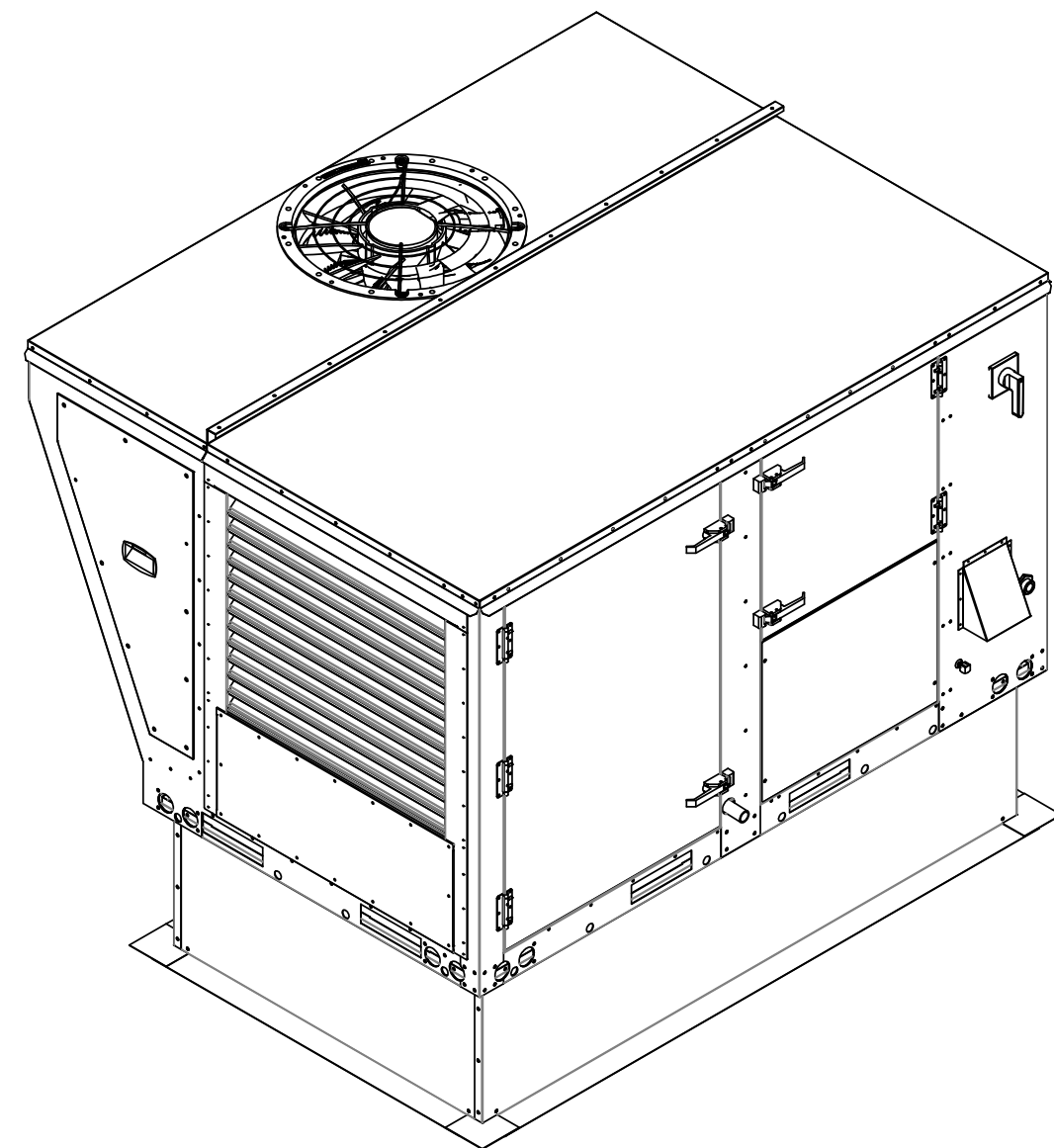


SHEET NO.
5

FAN #2 EARTU1-I,200-15-5T-MPU - HEATER (MUA-1)

- NOTES:
- DO NOT OBSTRUCT OUTSIDE AIR INLET, OUTSIDE AIR COIL OR OUTSIDE AIR FAN.
 -  DENOTES CORNER WEIGHT.
 - ROOF OPENING MUST BE 2" SMALLER THAN CURB DIMENSIONS IN BOTH DIRECTIONS.
 - CONNECTION FROM BREAKER TO UNITS SAFETY DISCONNECT SWITCH TO BE COPPER WIRE ONLY.
 - EXTERIOR GAS CONNECTION PROVIDED BY FACTORY WITH QUICK SEAL AND ANTI-ROTATION BRACKET.

*NOTE: SUPPLY DUCT MUST BE INSTALLED TO MEET SMACNA STANDARDS. A MINIMUM STRAIGHT DUCT LENGTH MUST BE MAINTAINED DOWNSTREAM OF UNIT DISCHARGE AS OUTLINED IN AMCA PUBLICATION 201. WHEN USING RECTANGULAR DUCTWORK, ELBOWS MUST BE RADIUS THROAT, RADIUS BACK WITH TURNING VANES. FLEXIBLE DUCTWORK AND SQUARE THROAT/SQUARE BACK ELBOWS SHOULD NOT BE USED. ANY TRANSITION AND/OR TURNS IN THE DUCTWORK WILL CAUSE SYSTEM EFFECT. SYSTEM EFFECT WILL DRASTICALLY INCREASE STATIC PRESSURE AND REDUCE AIRFLOW. DO NOT RELY ON UNIT TO SUPPORT DUCT IN ANY WAY. FAILURE TO PROPERLY SIZE DUCTWORK MAY CAUSE SYSTEM EFFECTS AND REDUCE PERFORMANCE OF THE EQUIPMENT. SUGGESTED STRAIGHT DUCT SIZE IS 20.75" x 21.5".



REVISIONS	
DESCRIPTION	DATE

econ·air
 Maryland Office
 8120 Woodmont Avenue, Suite 720, Bethesda, MD, 20814
 PHONE: (800) 888-0881 FAX: 9192275931 EMAIL: reg32@econair.com
 www.econair.com

Cava - North Brunswick, NJ
 2300 U.S. 1,
 North Brunswick Township, NJ 08902

DATE: 7/15/2024
 DWG.#: 6917126
 DRAWN BY: AJP-32
 SCALE: 3/4" = 1'-0"
MASTER DRAWING

SHEET NO.
 6

SEAL

PROJECT



CAVA_NORTH BRUNSWICK_NJ

222 GRAND AVE.
 NORTH BRUNSWICK, NJ 08902

DATE	DESCRIPTION
11/01/24	PRESCREEN COMMENTS
11/26/24	PERMIT SET
01/27/25	PERMIT ADDENDUM / CONSTRUCTION SET

This document contains information proprietary to Valerio Architects and is furnished in confidence for the limited purpose of evaluation, bidding or review. This document or its contents may not be used for any other purpose and may not be reproduced or disclosed to others without the prior written consent of Valerio Architects.

Captive Air

Date Modified: 02/28/24
 Date Created: AS SHOWN
 Scale: 3482-24-05
 Project No.: FA
 Drawn By: 3482-250121- Construction Set_AB.vwx
 CAD File:

SEAL

PROJECT



CAVA_NORTH BRUNSWICK_NJ

222 GRAND AVE.
NORTH BRUNSWICK, NJ 08902

DATE	DESCRIPTION
11/01/24	PRESCREEN COMMENTS
11/26/24	PERMIT SET
01/27/25	PERMIT ADDENDUM / CONSTRUCTION SET

This document contains information proprietary to Valerio Architects and is furnished in confidence for the limited purpose of evaluation, bidding or review. This document or its contents may not be used for any other purpose and may not be reproduced or disclosed to others without the prior written consent of Valerio Architects.

Captive Air

REVISIONS	
DESCRIPTION	DATE

www.econair.com
Maryland Office
8120 Woodmont Avenue, Suite 720, Bethesda, MD, 20814 PHONE: (800) 988-0881 FAX: 9192279631 EMAIL: reg32@econair.com

Cava - North Brunswick, NJ
2300 U.S. 1,
North Brunswick Township, NJ 08902

DATE: 7/15/2024

DWG.#:
6917126

DRAWN BY:
AJP-32

SCALE:
3/4" = 1'-0"

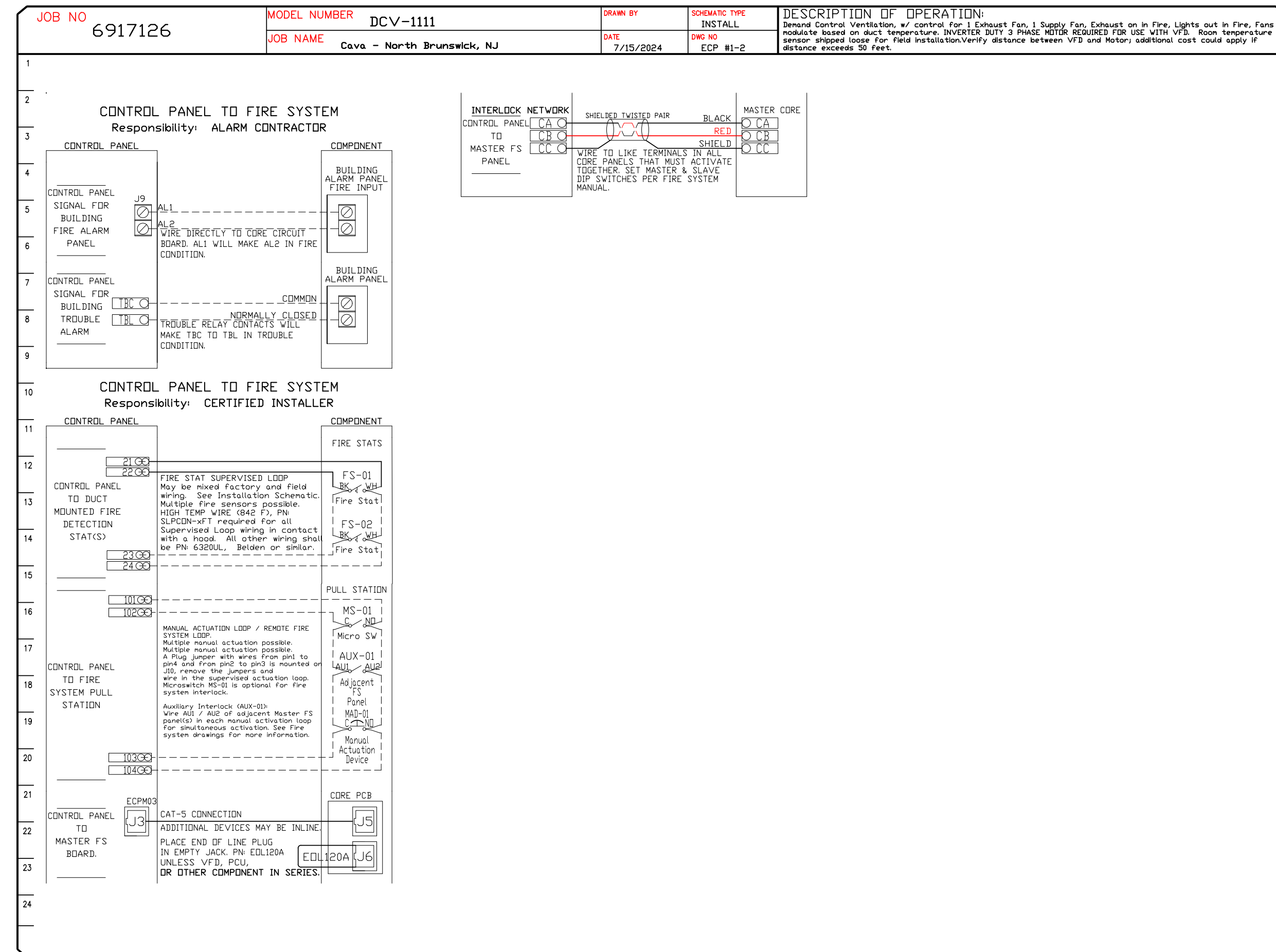
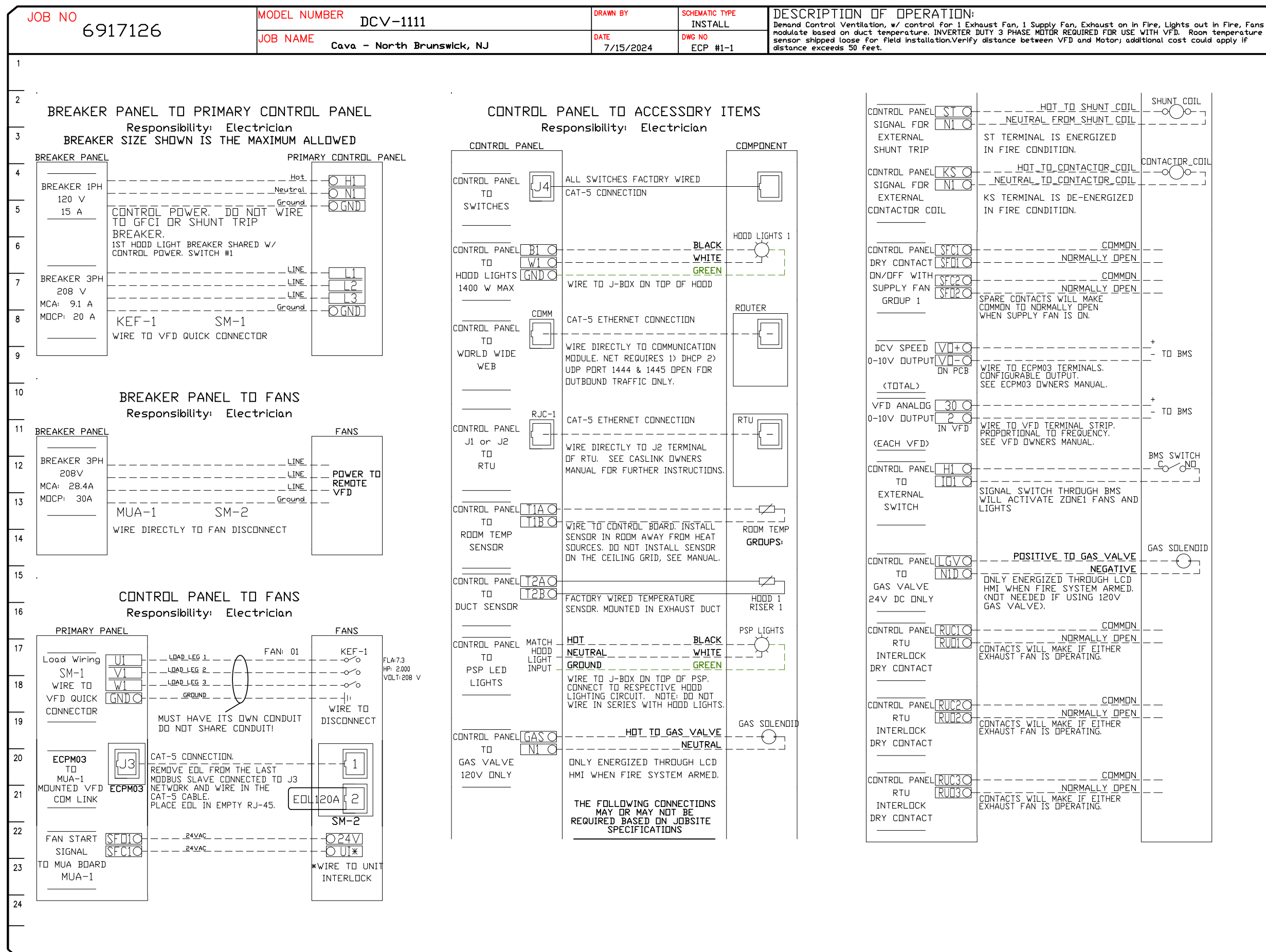
MASTER DRAWING

SHEET NO.
8

A9.8

ELECTRICAL PACKAGE - JOB#6917126

NO	TAG	PACKAGE #	LOCATION	SWITCHES		OPTION	FANS CONTROLLED											
				LOCATION	QUANTITY		FAN TAG	TYPE	#	HP	VOLT	FLA						
1		DCV-1111	UTILITY CABINET LEFT	UTILITY CABINET LEFT HOOD # 1	1 LIGHT 1 FAN	SMART CONTROLS DCV	KEF-1	EXHAUST	3	2,000	208	7.3	MUA-1	SUPPLY	3	2,000	208	6.1



SEAL

PROJECT



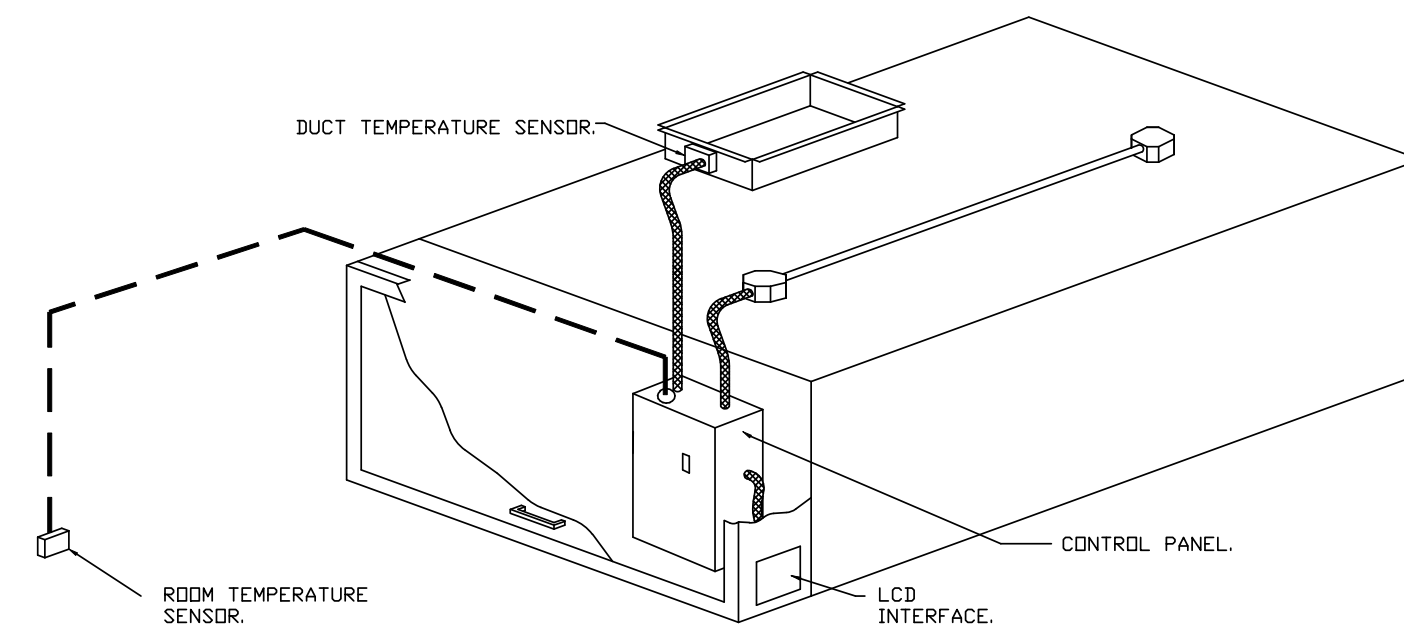
CAVA_NORTH BRUNSWICK_NJ

222 GRAND AVE.
 NORTH BRUNSWICK, NJ 08902

DATE	DESCRIPTION
11/01/24	PRESCREEN COMMENTS
11/26/24	PERMIT SET
01/27/25	PERMIT ADDENDUM / CONSTRUCTION SET

DEMAND CONTROL VENTILATION HOOD CONTROL PANEL SPECIFICATIONS:

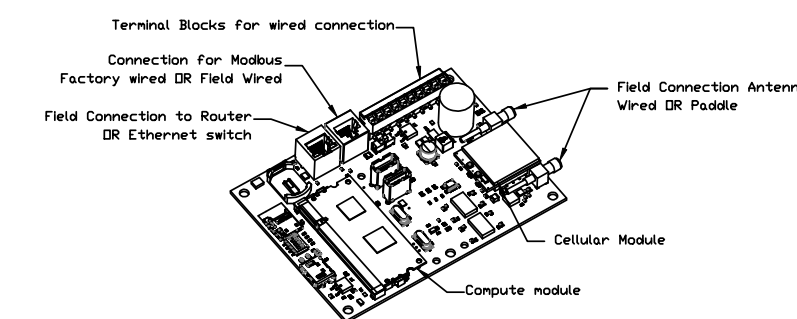
- CONTROLS SHALL BE LISTED BY ETL (UL 508A) AND SHALL COMPLY WITH DEMAND VENTILATION SYSTEM TURNDOWN REQUIREMENTS OUTLINED IN IECC 403.7.5 (2021).
- THE CONTROL ENCLOSURE SHALL BE NEMA 1 RATED AND LISTED FOR INSTALLATION INSIDE OF THE EXHAUST HOOD UTILITY CABINET. THE CONTROL ENCLOSURE MAY BE CONSTRUCTED OF STAINLESS STEEL OR PAINTED STEEL.
- TEMPERATURE PROBE(S) LOCATED IN THE EXHAUST DUCT RISER(S) SHALL BE CONSTRUCTED OF STAINLESS STEEL.
- A DIGITAL CONTROLLER SHALL BE PROVIDED TO ACTIVATE THE HOOD EXHAUST FANS DYNAMICALLY BASED ON A FIXED DIFFERENTIAL BETWEEN THE AMBIENT AND DUCT TEMPERATURES SENSORS. THIS FUNCTION SHALL MEET THE REQUIREMENTS OF IMC 507.1.1.
- A DIGITAL CONTROLLER SHALL PROVIDE ADJUSTABLE HYSTERESIS SETTINGS TO PREVENT CYCLING OF THE FANS AFTER THE COOKING APPLIANCES HAVE BEEN TURNED OFF AND/OR THE HEAT IN THE EXHAUST SYSTEM IS REDUCED.
- A DIGITAL CONTROLLER SHALL PROVIDE AN ADJUSTABLE MINIMUM FAN RUN-TIME SETTING TO PREVENT FAN CYCLING.
- VARIABLE FREQUENCY DRIVES (VFDS) SHALL BE PROVIDED FOR FANS AS REQUIRED. THE DIGITAL CONTROLLER SHALL MODULATE THE VFDS BETWEEN A MINIMUM SETPOINT AND A MAXIMUM SETPOINT ON DEMAND. THE DUCT TEMPERATURE SENSOR INPUT(S) TO THE DIGITAL CONTROLLER SHALL BE USED TO CALCULATE THE SPEED REFERENCE SIGNAL.
- THE VFD SPEED RANGE OF OPERATION SHALL BE FROM 0% TO 100% FOR THE SYSTEM, WITH THE ACTUAL MINIMUM SPEED SET AS REQUIRED TO MEET MINIMUM VENTILATION REQUIREMENTS.
- AN INTERNAL ALGORITHM TO THE DIGITAL CONTROLLER SHALL MODULATE SUPPLY FAN VFD SPEED PROPORTIONAL TO ALL EXHAUST FANS THAT ARE LOCATED IN THE SAME FAN GROUP AS THE SUPPLY FAN.
- THE SYSTEM SHALL OPERATE IN PREP MODE DURING LIGHT COOKING LOAD OR COOL DOWN MODE WHEN SUFFICIENT HEAT REMAINS UNDERNEATH THE HOOD SYSTEM AFTER COOKING OPERATIONS HAVE COMPLETED. OPERATION DURING EITHER OF THESE PERIODS WILL DISABLE THE SUPPLY FANS AND PROVIDE AN EXHAUST FAN SPEED THAT IS EQUAL TO THE MINIMUM VENTILATION REQUIREMENT.
- A DIGITAL CONTROLLER SHALL DISABLE THE SUPPLY FAN(S), ACTIVATE THE EXHAUST FAN(S), ACTIVATE THE APPLIANCE SHUNT TRIP, AND DISABLE AN ELECTRIC GAS VALVE AUTOMATICALLY WHEN FIRE CONDITION IS DETECTED ON A COVERED HOOD.
- A DIGITAL CONTROLLER SHALL ALLOW FOR EXTERNAL BMS FAN CONTROL VIA DRY CONTACT (EXTERNAL CONTROL SHALL NOT OVERRIDE FAN OPERATION LOGIC AS REQUIRED BY CODE).
- AN LCD INTERFACE SHALL BE PROVIDED WITH THE FOLLOWING FEATURES:
 - ON/OFF PUSH BUTTON FAN & LIGHT SWITCH ACTIVATION.
 - INTEGRATED GAS VALVE RESET FOR ELECTRONIC GAS VALVES (NO RESET RELAY REQUIRED).
 - VFD FAULT DISPLAY WITH AUDIBLE & VISUAL ALARM NOTIFICATION.
 - DUCT TEMPERATURE SENSOR FAILURE DETECTION WITH AUDIBLE & VISUAL ALARM NOTIFICATION.
 - MIS-WIRED DUCT TEMPERATURE SENSOR DETECTION WITH AUDIBLE & VISUAL ALARM NOTIFICATION.
 - A SINGLE LOW VOLTAGE CAT-5 RJ45 WIRING CONNECTION.
 - AN ENERGY SAVINGS INDICATOR THAT UTILIZES MEASURED KWH FROM THE VFDS.



TYPICAL HOOD CONTROL PANEL INSTALLATION

SEQUENCE OF OPERATIONS:

- THE HOOD CONTROL PANEL IS CAPABLE OF OPERATING IN ONE OR MORE OF THE FOLLOWING STATES AT ANY GIVEN TIME:
 - **AUTOMATIC:** THE SYSTEM OPERATES BASED ON THE DIFFERENTIAL BETWEEN ROOM TEMPERATURE AND THE TEMPERATURE AT THE HOOD CAVITY OR EXHAUST DUCT COLLAR. FANS ACTIVATE AT A CONFIGURABLE TEMPERATURE DIFFERENTIAL THRESHOLD. DEPENDING ON THE JOB CONFIGURATION EACH FAN ZONE CAN BE CONFIGURED AS STATIC OR DYNAMIC. THESE TERMS REFER TO WHETHER A VARIABLE MOTOR (SUCH AS EC MOTORS OR VFD DRIVEN MOTORS) MODULATE WITH TEMPERATURE. IF THE PANEL IS EQUIPPED WITH VARIABLE SPEED FANS AND THE ZONE IS DEFINED AS "DYNAMIC", THESE WILL MODULATE WITHIN A USER-DEFINED RANGE BASED ON THE TEMPERATURE DIFFERENTIAL. PANELS EQUIPPED WITH VARIABLE SPEED FANS AND A FAN ZONE DEFINED AS "STATIC", FANS WILL RUN AT A SET SPEED CALCULATED FOR THE DRIVE. DEMAND CONTROL VENTILATION SYSTEMS ARE CAPABLE OF MODULATING EXHAUST AND MAKE UP AIR FAN SPEEDS PER THE REQUIREMENTS OUTLINED IN IECC 403.7.5 (2021).
 - **MANUAL:** THE SYSTEM OPERATES BASED ON HUMAN INPUT FROM AN HMI.
 - **SCHEDULE:** A WEEKLY SCHEDULE CAN BE SET TO RUN FANS FOR A SPECIFIED PERIOD THROUGHOUT THE DAY. THERE ARE THREE OCCUPIED TIMES PER DAY TO ALLOW FOR THE USER TO SET UP A TIME THAT IS SUITABLE TO THEIR NEEDS. ANY TIME THAT IS WITHIN THE DEFINED OCCUPIED TIME, THE SYSTEM WILL RUN AT MODULATION MODE AND FOLLOW THE FAN PROCEDURE ALGORITHM BASED ON TEMPERATURE DURING THIS TIME. DURING UNOCCUPIED TIME, THE SYSTEM WILL HAVE AN EXTRA OFFSET TO PREVENT UNINTENDED ACTIVATION OF THE SYSTEM DURING A TIME WHERE THE SYSTEM IS NOT BEING OCCUPIED.
 - **OTHER:** THE SYSTEM OPERATES BASED ON THE INPUT FROM AN EXTERNAL SOURCE (DDC, BMS OR HARD-WIRED INTERLOCK).
 - **FIRE:** UPON ACTIVATION OF THE HOOD FIRE SUPPRESSION SYSTEM, THE EXHAUST FAN WILL COME ON OR CONTINUE TO RUN, THE HOOD MAKEUP AIR WILL SHUTDOWN, AND A SIGNAL WILL BE SENT FOR ACTIVATING THE SHUNT TRIP BREAKER PROVIDED BY THE ELECTRICIAN. FUEL GAS WILL SHUT OFF VIA A MECHANICAL/ELECTRICAL GAS VALVE ACTUATED BY THE HOOD FIRE SUPPRESSION SYSTEM.



CASlink Monitor and Control

- Hood control panel to support communications to cloud-based Building Management System.
- Hood Control Panel to allow cloud-based Building Management System to monitor real time parameters outlined as MONITOR in the points list.
- Hood Control Panel to allow cloud-based Building Management System to control parameters outlined as CONTROL in the points list.
- Hood Control Panel to allow cloud-based Building Management System to implement SYSTEM OPTIMIZER control strategies for fully integrated Building Management.

MONITORING AND CONTROL POINTS LIST

ACV Packages	Function	SC Packages	Function
Room Temperature	MONITOR	Room Temperature(s)	MONITOR
Duct Temperature(s)	MONITOR	Duct Temperature(s)	MONITOR
MUA Discharge Temperature	MONITOR	MUA Discharge Temperature	MONITOR
Ritohm RTU Discharge Temperature	MONITOR	Ritohm RTU Discharge Temperature	MONITOR
Fan Speed	MONITOR	Controller Faults	MONITOR
Fan Amperage	MONITOR	Fan Faults	MONITOR
Fan Power	MONITOR	Fan Status	MONITOR
VFD Faults	MONITOR	PCU Faults	MONITOR
Controller Faults	MONITOR	PCU Filter Clog Percentages	MONITOR
Fan Faults	MONITOR	Fire Condition	MONITOR
Fan Status	MONITOR	CORE Fire System	MONITOR
PCU Faults	MONITOR	Building Pressures	MONITOR
PCU Filter Clog Percentages	MONITOR	Fans Button(s)	MONITOR & CONTROL
Fire Condition	MONITOR	Lights Button(s)	MONITOR & CONTROL
CORE Fire System	MONITOR	Flush Button	MONITOR & CONTROL
Building Pressures	MONITOR		
Prep Time Button	MONITOR & CONTROL		
Fans Button	MONITOR & CONTROL		
Lights Button	MONITOR & CONTROL		
Flush Button	MONITOR & CONTROL		

SYSTEM DESIGN VERIFICATION (SDV)

IF ORDERED, CAS SERVICE WILL PERFORM A SYSTEM DESIGN VERIFICATION (SDV) ONCE ALL EQUIPMENT HAS HAD A COMPLETE START UP PER THE OPERATION AND INSTALLATION MANUAL. TYPICALLY, THE SDV WILL BE PERFORMED AFTER ALL INSPECTIONS ARE COMPLETE.

ANY FIELD RELATED DISCREPANCIES THAT ARE DISCOVERED DURING THE SDV WILL BE BROUGHT TO THE ATTENTION OF THE GENERAL CONTRACTOR AND CORRESPONDING TRADES ON SITE. THESE ISSUES WILL BE DOCUMENTED AND FORWARDED TO THE APPROPRIATE SALES OFFICE. IF CAS SERVICE HAS TO RESOLVE A DISCREPANCY THAT IS A FIELD ISSUE, THE GENERAL CONTRACTOR WILL BE NOTIFIED AND BILLED FOR THE WORK. SHOULD A RETURN TRIP BE REQUIRED DUE TO ANY FIELD RELATED DISCREPANCY THAT CANNOT BE RESOLVED DURING THE SDV, THERE WILL BE ADDITIONAL TRIP CHARGES.

DURING THE SDV, CAS SERVICE WILL ADDRESS ANY DISCREPANCY THAT IS THE FAULT OF THE MANUFACTURER. SHOULD A RETURN TRIP BE REQUIRED, THE GENERAL CONTRACTOR AND APPROPRIATE SALES OFFICE WILL BE NOTIFIED. THERE WILL BE NO ADDITIONAL CHARGES FOR MANUFACTURER DISCREPANCIES.

REVISIONS	
DESCRIPTION	DATE

www.econ-air.com
econ-air
 Maryland Office
 8120 Woodmont Avenue, Suite 720, Bethesda, MD, 20814
 PHONE: (800) 988-0881 FAX: 9192275931 EMAIL: reg22@econair.com

Cava - North Brunswick, NJ
 2300 U.S. 1,
 North Brunswick Township, NJ, 08902

DATE: 7/15/2024

DWG.#: 6917126

DRAWN BY: AJP-32

SCALE: 3/4" = 1'-0"

MASTER DRAWING

SHEET NO.
9

Captive Air

Date Modified: 02/28/24
 Date Created: AS SHOWN
 Scale: 3482-24-05
 Project No.: FA
 Drawn By: CAD File: 3482-250121- Construction Set_AB.vwx

ELECTRICAL SYMBOLS & ABBREVIATIONS

	CONDUIT CONCEALED ABOVE THE CEILING, IN A WALL OR IN A RACEWAY
	CONDUIT CONCEALED BELOW THE SLAB
	LOW VOLTAGE WIRING
	HOME RUN TO PANELBOARD AND CIRCUIT NUMBER SHOWN
	JUNCTION BOX
	ELECTRICAL PANEL BOARD
	SINGLE-POLE, SINGLE-THROW LIGHT SWITCH
	WEATHERPROOF SWITCH
	NEMA 5-20R 1-PLEX RECEPTACLE
	NEMA 5-20R DUPLEX RECEPTACLE
	NEMA 5-20R DUPLEX RECEPTACLE WITH USB
	NEMA 5-20R DOUBLE-DUPLEX RECEPTACLE
	NEMA 5-20R DUPLEX RECEPTACLE, ISOLATED GROUND OR GFI
	OTHER RECEPTACLE - SEE PLAN FOR RATING AND TYPE
	NEMA 5-20R CEILING MOUNTED DUPLEX RECEPTACLE
	WALL-MOUNTED OCCUPANCY SENSOR
	WALL-MOUNTED VACANCY SENSOR
	DAYLIGHT SENSOR
	JUNCTION BOX FOR RJ-45 OUTLET. REFER TO PLAN FOR JACK QUANTITY.
	DISCONNECT SWITCH: X = SWITCH RATING Y = FUSE SIZE (NF=NON-FUSED) Z = NUMBER OF POLES
	PLAN NOTE (SEE PLAN NOTES LISTED ON THE SAME SHEET FOR MEANING)
	CONNECT TO EXISTING
	EQUIPMENT TAG. REFER TO THE SCHEDULES FOR MORE INFORMATION

ELECTRICAL ABBREVIATIONS

(D)	DEMOLISHED
(E)	EXISTING
(R)	RELOCATED
A	AMPERE
A.F.F.	ABOVE FINISHED FLOOR
AHJ	AUTHORITY HAVING JURISDICTION
AIC	AMPERE INTERRUPTING CAPACITY
A.O.R.	ARCHITECT OF RECORD
B.F.F.	BELOW FINISHED FLOOR
C	CONDUIT
C.L.	CURRENT LIMITER
E.O.R.	ENGINEER OF RECORD
G	GROUND
GC	GENERAL CONTRACTOR
GFCI	GROUND FAULT CURRENT INTERRUPT
IG	ISOLATED GROUND
JB	JUNCTION BOX
KES	KITCHEN EQUIPMENT SUPPLIER
MCA	MINIMUM CIRCUIT AMPACITY
MFR	MANUFACTURER
MOCB	MAXIMUM OVERCURRENT PROTECTION
NL	NIGHT LIGHT
REQ'D	REQUIRED
S	SURFACE MOUNTED
SPEC	SPECIFICATION OR SPECIFIED
UNO	UNLESS NOTED OTHERWISE
V	VOLT
WP	WEATHERPROOF

CONSULTANT:



EVERJ ENGINEERING, INC.
1509 BUCK TRAIL LANE
WORTHINGTON, OH 43085
614-349-8054
www.everjengineering.com

SEAL



Joshua Everj
11/24/2025

PROJECT

CAVA

CAVA - NORTH BRUNSWICK_NJ
222 GRAND AVE.
NORTH BRUNSWICK, NJ 08902

△ DATE DESCRIPTION

11/01/2024	LL CHANGES
12/02/2024	DINING SENSOR MOVED
△ 01/27/2025	PERMIT ADDENDUM/CONST SET

This document contains information proprietary to Valerio Architects and is furnished in confidence for the limited purpose of evaluation, bidding or review. This document or its contents may not be used for any other purpose and may not be reproduced or disclosed to others without the prior written consent of Valerio Architects.

ELECTRICAL COVER SHEET

Date Modified:	07/26/2024
Date Created:	07/26/2024
Scale:	AS NOTED
Project No.:	240003
Drawn By:	JWH
Checked By:	JAE

E000