

Report By:

National TAB
1329 E. KEMPER ROAD
SUITE 4210
CINCINNATI, OH 45246



Report: TAB REPORT
Function: Test, Adjust, & Balance
Date: 09/22/2023

PROJECT
09-18-23 WALGREENS #3909 - ARLINGTON,
TX

10001 N MACARTHUR BLVD

ARLINGTON, TX 75063

Client

Walgreens
200 WILMOT RD
DEERFIELD, IL 60015

CheckList List

- TECH - 01 RTU INSTALLATION CHECKLIST
- TECH - 02 EXHAUST FANS INSPECTIONS
- TECH - 03 START-UP CONTROLS PROGRAMMING
- TECH - 04 EMS/SENSOR VALIDATION
- TECH - 05 TAB CHECKLIST
- TECH - 06 FUNCTIONAL TESTS
- TECH - 07 TEMPERATURE SETPOINTS
- TECH - 08 ENTRANCE HEATERS
- TECH - SITE PICTURES



09-18-23 WALGREENS #3909 - ARLINGTON, TX

CheckList Information

Name : TECH - 01 RTU INSTALLATION CHECKLIST **Status :** Completed
Assigned Organization : National TAB **Asset :**
Requesting Organization : National TAB
Created Date : 09/14/2023 - Brianna Biggs - National TAB
Completed Date : 09/21/2023 - Darius Payne - National TAB

CheckList Item Details

General / Exterior Inspections

Verify all required equipment has been replaced per TA and BOM. Pass

Comment:

Verified all new equipment per Submittal report for each RTU & EH.

All units are installed in the proper locations Pass

Comment:

Units installed on rooftop as shown on design plan.

Units are labeled correctly Pass

Comment:

All RTU units properly labeled.

Asset tag installed Pass

Comment:

Asset tags installed on Units.

Roof is clear of debris. Pass

Comment:

Rooftop verified clear of debris.

Maintenance access for all unit access panels is acceptable and panels open freely. Pass

Comment:

Yes, access for maintenance per pan opens freely.

Cabinet and general installation is complete. Pass

Comment:

Yes, both cabinet & general installation is completed.

Unit is secure to curb and level horizontally and vertically. Pass

Comment:

Yes, units are secure to curb & level.

Access doors close tightly with no leaks Pass

Comment:

All access doors sealed without leakage.

Condensate and gas piping is properly supported. Pass

Comment:

Piping property supported.

Costgard is installed per scope of work and piping unions are cemented.

Comment:

Yes, Costgard is installed per scope of work with cemented piping unions.

Additional Comments

Comment:

RTU 3 condensation drain clogged.

Interior Inspections

Fan rotation is correct Pass

Comment:

Fan rotations are correct on each RTU. Rotation id clockwise facing blower motor at each unit.

Pulleys are correctly aligned and both motor and fan sheave pins are tightened in place. Pass

Comment:

RTU 3 for pharmacy required pulled adjustment to center belt adjust RPM's. All other units aligned with pins in place.

Return air and outside air dampers close tightly with no gaps Pass

Comment:

Yes, all RTU dampers close tightly with no additional gaps in place.

Cabinet and coils are not damaged and in like new condition. Pass

Comment:

Yes, cabinet & coils undamaged in new condition(s).

Inside of unit is clean and clear of debris. Pass

Comment:

Yes, internals of all RTU's are clear of debris.

Validate condensate is piped to splash block, draing, or roof drain per code requirements Fail

Comment:

RTU 3 condensation drain clogged.

Verify filters are installed, clean and of proper size. Verify there is no air by-pass around filters. Pass

Comment:

Yes, all RTU filters are properly sized without air by-pass.

Curb is sealed with no air leakage. Pass

Comment:

Yes, all RTU curbs are clear of air leaks.

Additional Comments:

Comment:

RTU 3 Condensate drain line to roof runoff is clogged. Creating water build up around Pharmacy.

Fire/Smoke Alarm Systems

In duct smoke detectors are installed Pass

Comment:

Yes, in duct smoke detectors installed in each RTU.

Fire alarm panel status (visual inspection where possible)

Comment:

Fire alarm panel status operational during inspection.

Additional Comments:

Comment:

Electrical

Electrical wiring is complete with no visible damage

Pass

Comment:

Yes, all electrical wiring secured and complete during inspection.

Electrical connections are tight with sealtight around any unit penetrations.

Pass

Comment:

Yes, all electrical connections tight with seal tight parameters.

Disconnect switch is installed in accessible location near or on unit.

Pass

Comment:

Yes, disconnect switch installed and accessible at each RTU.

Verify overcurrent protection is HACR type, installed and sized correctly and labeled in panel.

Comment:

Yes, overcurrent protection installed correctly & labeled within panel.

Maintenance electrical outlet is installed and functional.

Pass

Comment:

Yes, maintenance electrical outlet installed & tested at each unit.

Main distribution panel is labeled correctly.

Pass

Comment:

Yes, main distribution panel per RTU's labeled accurately.

Unit ground wire is secured.

Pass

Comment:

Yes, unit ground properly secured.

Additional Comments:

Comment:

None.



09-18-23 WALGREENS #3909 - ARLINGTON, TX

CheckList Information

Name : TECH - 02 EXHAUST FANS INSPECTIONS **Status :** Completed

Assigned Organization : National TAB **Asset :**

Requesting Organization : National TAB

Created Date : 09/14/2023 - Brianna Biggs - National TAB

Completed Date : 09/21/2023 - Darius Payne - National TAB

CheckList Item Details

Fan rotation is correct Pass

Comment:

Yes, all exhaust fan rotations verified as correct.

Pulleys are aligned and belts are tensioned properly

Comment:

N/A, All units are Direct Driven.

Speed controller installed and functional (direct drive)

Comment:

Yes, speed controllers installed & functional.

Fan is secured to the curb Pass

Comment:

All fans secured to curb during inspection.

Back draft damper is installed and functional Pass

Comment:

Back Draft damp installed & operational during inspection.

No exterior damage to the fan Pass

Comment:

No exterior fan damage found during inspection.

No unusual noise or vibration

Pass

Comment:

No abnormalities notes during inspection.

Controls are functional

Pass

Comment:

All controls functional during TAB Inspection.

Additional Comments:

Comment:

4 Total Exhaust Fans & 1 EH located during TAB Inspection. Versus 5 shown on plan.

Notes/Comments :

EF-4 shut off by mechanical contractor per management request. Unit now serves the Management Office.

Date :09/21/2023



09-18-23 WALGREENS #3909 - ARLINGTON, TX

CheckList Information

Name : TECH - 03 START-UP CONTROLS PROGRAMMING **Status :** Not Completed

Assigned Organization : National TAB **Asset :**

Requesting Organization : National TAB

Created Date : 09/14/2023 - Brianna Biggs - National TAB

CheckList Item Details

Programming: SE 3.3, 3.4, 4.0

Controller-Network-Address: RTU number + 3 Pass

Comment:

Controller-Network-FCBusMode = Wired Field Bus Pass

Comment:

Controller-Network-BaudRate = Auto Pass

Comment:

Controller-Network-Device ID = RTU number + 3 Pass

Comment:

Details-Occ-OffDurUnocc = No Pass

Comment:

Details-Clg-Setup-Clg-En = Yes Pass

Comment:

Details-Clg-Setup-ClgAdapTunEn = Yes

Pass

Comment:

Details-Htg-Setup-Htg-En = Yes

Pass

Comment:

Details-Htg-Setup-#HtgStgs = 2 Stages

Pass

Comment:

Details-Htg-Setup-HtgAdapTunEn = Yes

Pass

Comment:

Details-Htg-Setup-#GasVlvs = 1 (Set to 0 for Hp and Elect Heat)

Pass

Comment:

Details-Fan-Setup-Fan Ctl-Type = No VFD select "Single Speed", W/VFD select "Fixed Variable"

Pass

Comment:

RTU 1 & 2 are at "Fixed Variable, RTU 3 & 4 set at "Single Speed."

Details-Fan-Setup-FanOnOcc = Yes

Pass

Comment:

Details-Fan-Setup-FanOnDlyHeat = 30s (Set to 0 for HP or Electric Heat)

Pass

Comment:

Details-Fan-Setup-FanOnly-%Cmd = 50%

Pass

Comment:

Details-Fan-Setup-1ClgStg-%Cmd = 70%

Pass

Comment:

Details-Fan-Setup-2Clgstg-%Cmd = 100% (2stage Unit) or 80% (3 and 4 stage)

Pass

Comment:

Details-Fan-Setup-3ClStg-%Cmd = 100% (3 stage unit) or 90% (4 stage)

Pass

Comment:

Details-Fan-Setup-4ClStg-%Cmd = 100% (4 Stage unit)

Pass

Comment:

Details-Fan-Setup-1HtgStg-%Cmd = 100%

Pass

Comment:

Details-Fan-Setup-2HtgStg-%Cmd = 100%

Pass

Comment:

Details-Econ-Setup-Econ-En = Yes

Pass

Comment:

Details-Econ-Setup-Econ-MinPos = Set to minimum outside air requirements.

Pass

Comment:

Min Pos set at 10%.

Details-Econ-Setup-LowSpdFan-MinPos = Set minimum 1% above EconMinPos

Pass

Comment:

Details-Econ-Setup-FreeClg-Sel = Single Enthalpy

Pass

Comment:

Details-Econ-Setup-EconOAEth-Sp 4= 24 Btu/lb

Pass

Comment:

Details-Econ-Setup-Dvent-Mode = Enable

Pass

Comment:

Details-Econ-Setup-DventMaxEconPos = 50%

Pass

Comment:

Details-Econ-Setup-DventIAP-Sp = 1000

Comment:

Details-Econ-Setup-EconFltDetectEn = Enable

Comment:

Additional Comments:

Comment:

Non ZR Units only:

Details-HGR-Setup-HGR-En = No

Comment:

Details-HGR-Setup-HGRAlt-En = No

Comment:

Details - HGR-Setup-HGRUnocc-En = No

Comment:

Details-HGR-Setup-Mode = No

Comment:

Additional Comments:

Comment:

ZR Units - Reheat Units only:

Details-HGR-Setup-HGR-En = Yes

Comment:

Details-HGR-Setup-HGRAlt-En = Yes

Comment:

Details - HGR-Setup-HGRUnocc-En = Yes

Comment:

Details-HGR-Setup-Mode = No

Comment:

Additional Comments:

Comment:



09-18-23 WALGREENS #3909 - ARLINGTON, TX

CheckList Information

Name : TECH - 04 EMS/SENSOR VALIDATION **Status :** Not Completed
Assigned Organization : National TAB **Asset :**
Requesting Organization : National TAB
Created Date : 09/14/2023 - Brianna Biggs - National TAB

CheckList Item Details

RTU supply air temp sensor location located per start-up binder.

Comment:

RTU return air temp sensor location located per start-up binder.

Comment:

RTU return air smoke detector (when applicable) is located per start-up binder.

Comment:

Space temperature sensor has been replaced and location meets requirements.

Comment:

Space humidity sensor has been replaced and location meets requirements.

Comment:

Unit is being controlled by a space temperature sensor or thermostat

Comment:

EMS has been connected and validated with TOC or Gridpoint. Screen shot is available.

Comment:

No splicing of EMS/Sensor/Thermostat wiring is visible

Comment:

(If Applicable) 2 Stage Thermostat to SE Board Control Wiring meets detail in start-up binder.

Comment:

(If Applicable) 2 Stage Thermostat to 4 Stage Unit meets detail in start-up binder.

Comment:

(If Applicable) 4 Stage Thermostat to 4 Stage Unit meets detail in start-up binder.

Comment:

(If Applicable) 3 Stage Thermostat wiring meets detail in start-up binder.

Comment:

(If Applicable) 3 Stage Thermostat with Humidity sensor wiring meets detail in start-up binder.

Comment:

(If Applicable) EH Thermostat with SCR control wiring meets detail in start-up binder.

Comment:

Temperature setpoints are set for correction region and space (see ASHRAE / temperature setpoint chart in procedure)

Comment:

Additional Comments:

Comment:



09-18-23 WALGREENS #3909 - ARLINGTON, TX

CheckList Information

Name : TECH - 05 TAB CHECKLIST **Status :** Not Completed
Assigned Organization : National TAB **Asset :**
Requesting Organization : National TAB
Created Date : 09/14/2023 - Brianna Biggs - National TAB

CheckList Item Details

Outside air damper set to minimum air flow requirement and damper position marked.

Comment:

Total Supply, return, and outside air volumes meet design tolerances (+/-10%)

Comment:

Enclosed area diffusers (Pharmacies, manager office, employee room, restrooms, electrical rooms) balanced within +/-10%?

Comment:

Open area diffusers (Sales floor and stock room) balanced within +/-25% of design?

Comment:

Store pressure meets tolerances (see formula in balance schedule). Make sure to account for existing exhaust fans airflows as shown on original drawings that are non-functioning.

Comment:

Outside air and return air dampers modulate freely.

Comment:

Start-up report from the installing contractor is reviewed and all information if filled out. All required measurements are within typical ranges.

Comment:

(If Applicable) VFD is set-up and operational. (N/A = not applicable)

Comment:

Verify amp draw of motor is within unit specification, not operating in overramped condition.

Comment:

Sales floor temperature and humidity measurement

Comment:

Pharmacy temperature and humidity measurement

Comment:

Stock Room temperature and humidity measurement

Comment:

Outdoor air temperature and humidity measurement

Comment:

Additional Comments:

Comment:



09-18-23 WALGREENS #3909 - ARLINGTON, TX

CheckList Information

Name : TECH - 06 FUNCTIONAL TESTS **Status :** Not Completed
Assigned Organization : National TAB **Asset :**
Requesting Organization : National TAB
Created Date : 09/14/2023 - Brianna Biggs - National TAB

CheckList Item Details

Cooling Functional Test

Overwrite the thermostat or sensor to put the unit into cooling mode. Pass

Comment:

Compressors enable. Pass

Comment:

If fan has VFD, the fan increases speed. N/A

Comment:

Document the discharge air temperature.

Comment:

After 10 minutes, Discharge air temperature is below 55 degrees.

Comment:

Cooling mode is operational Pass

Comment:

Additional Comments:

Comment:

Heating Functional Test

Overwrite the thermostat or sensor to put the unit into heating mode.

Pass

Comment:

Heat exchanger enables.

Pass

Comment:

If fan has VFD, the fan increases speed.

N/A

Comment:

Document the discharge air temperature.

Comment:

After 10 minutes, Discharge air temperature is above 85 degrees.

Comment:

Heating mode is operational

Pass

Comment:

Additional Comments

Comment:

Dehumidification Functional Test

Overwrite the humidistat to put the unit into dehumidification mode.

Comment:

Compressors enable.

Comment:

Hot Gas Reheat Valve opens

Comment:

If fan has VFD, the fan increases speed.

Comment:

Document the discharge air temperature.

Comment:

Dehumidification Mode is operational. (Pass/Fail/NA)

Comment:

Additional Comments:

Comment:

Economizer Functional Test

Overwrite the humidistat to put the unit into economizer mode.

Pass

Comment:

Humidistat override for economizer mode functional.

Economizer modulates from minimum position to 100% open. (Pass/Fail/NA)

Comment:

Yes, economizer modulates from 0-100%open.

Additional Comments:

Comment:



09-18-23 WALGREENS #3909 - ARLINGTON, TX

CheckList Information

Name : TECH - 07 TEMPERATURE SETPOINTS **Status :** Not Completed
Assigned Organization : National TAB **Asset :**
Requesting Organization : National TAB
Created Date : 09/14/2023 - Brianna Biggs - National TAB

CheckList Item Details

Temperature setpoints must be set using provided charts are based on state and space that each RTU serves. Confirm with controls company that these are set correctly

Comment:



09-18-23 WALGREENS #3909 - ARLINGTON, TX

CheckList Information

Name : TECH - 08 ENTRANCE HEATERS **Status :** Completed
Assigned Organization : National TAB **Asset :**
Requesting Organization : National TAB
Created Date : 09/14/2023 - Brianna Biggs - National TAB
Completed Date : 09/21/2023 - Darius Payne - National TAB

CheckList Item Details

Sensor is located within 15' of entrance area Pass

Comment:

Yes, right of main entrance on wall.

Confirm proper operation of entrance heater and associated controls Fail

Comment:

Entrance heater non-responsive to calls for heat. Contactors close & motor buzzes without operation.

Balance supply air quantity to manufacturer recommended supply airflow. Fail

Comment:

Unable to test due to non-responsive fan motor.

Confirm listed temperature rise and discharge air temperature based on approved BOM/submittal Fail

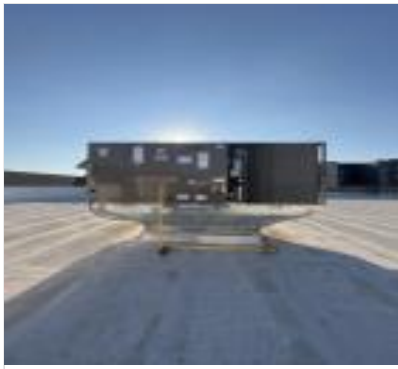
Comment:

Unable to test due to non-responsive fan motor.

Notes/Comments :

EH-1 serving main entrance non-responsive during TAB. Due to fan motor fault.

Date :09/21/2023



RTU1-1
09/19/2023

RTU-2

Yes

Comment:



RTU2-1
09/19/2023



RTU2-2
09/19/2023

RTU-3

Yes

Comment:



RTU3-1
09/19/2023



RTU3-2
09/19/2023

RTU-4	Yes
Comment:	
EF-1	Yes
Comment:	
EF-2	Yes
Comment:	
EF-3	Yes
Comment:	
EF-4	Yes
Comment:	
EH-1	Yes
Comment:	

National TAB

Project: 09-18-23 WALGREENS #3909 - ARLINGTON, TX

System/Unit: AHU/RTU



Asset: RTU1

AREA:

Unit Data			Test Data		
	Design	Actual		Design	Actual
MFG	YORK	YORK	SF CFM	6500	6851
Serial Num	-	N2G3760766	SF RPM	932	2991
Model Num	AW15N3DQ4S1ARS32A2	AW15N3DQ4S1ARS32A2	RA CFM	4200	5683
Type	RTU	RTU	OA CFM	1050	968
Configuration	VERTICAL	VERTICAL	RL Voltage	-	481,485,486
Num OA Filters 1	-	2	RL Amperage	-	6.2,6.4,5.9
OA Filter Size 1	-	33X22	SF Rotation	-	CW
Num Final Filter 1	-	9	RA Damper Position	-	90%
Final Filter Size 1	-	16X25	Min OA Damper Position	-	10%
			Min OA Damper Type	-	MOTORIZED
			OA Enthalpy Setpt	-	

Motor Data		
	Design	Actual
Motor MFG	-	BALDOR
Frame	-	184TZ
Horsepower	5	5
Motor Rpm	-	1725
Phase	3	3
Rated Voltage	460	460
Rated Amperage	-	6.7

Performance Data		
	Design	Actual
MA Plenum SP	-	
Fan Suction SP	-	
Fan Discharge SP	-	
Total ESP	1.0"	
Fan Total SP	-	

Drive Data		
	Design	Actual
Motor Sheave Size	-	
Motor Bore Size	-	
Motor Sheave SetPt	-	
Fan Sheave Size	-	8
Fan Sheave Bore	-	1 7/8
Belt CL Distance	-	
Num of Belts	-	1
Belt Size	-	BX40
Belt Alignment	-	CENTER

General		
	Design	Actual
Fan Rotation Correct	-	Y
Unit Filters Clean	-	Y
Condensate Drain Installed	-	Y

Notes:
 ORIGINAL DIFFUSER DESIGN TOTALS =7150
 ADJUSTED DIFFUSER DESIGN. ***Adjusted Design @6500 CFM Per Plan Design.

Written By: Darius Payne on 09/19/2023

National TAB

Project:09-18-23 WALGREENS #3909 - ARLINGTON, TX

AHU/RTU



Diffuser Supply (GRD)

RTU1/

Asset									
Asset Name	Location	Type	Size	DESIGN CFM	AK	CFM(1)	CFM(2)	FINAL CFM	% to design
SGRD1	SALES		12/6	147					-
SGRD2	SALES		10"	220					-
SGRD3	SALES		18X18	477					-
SGRD4	SALES		10"	220					-
SGRD5	SALES		12/6	147					-
SGRD6	SALES		12/6	147					-
SGRD7	SALES		12/6	147					-
SGRD8	SALES		12/6	147					-
SGRD9	PHOTO		8X8	165					-
SGRD10	PHOTO		8"	165					-
SGRD11	PASSAGE #2		12"	294					-
SGRD12	PHOTO		14"	551					-
SGRD13	OFFICE		12"	367					-
SGRD14	TECH ROOM		12X12	312					-
SGRD15	TECH ROOM		12X12	312					-
SGRD16	SALES		18X18	477					-
SGRD17	SALES		18X18	477					-
SGRD18	SALES		18X18	477					-
Total				5249		0	0	0	0%

National TAB

Project: 09-18-23 WALGREENS #3909 - ARLINGTON, TX

System/Unit: AHU/RTU



Asset: RTU2

AREA:

Unit Data			Test Data		
	Design	Actual		Design	Actual
MFG	YORK	YORK	SF CFM	5250	5271
Serial Num	-	N2G3748356	SF RPM	996	1200
Model Num	AW15N3DQ4S1AES62A2	AW15N3DQ4S1AES62A2	RA CFM	4200	4104
Type	RTU	RTU	OA CFM	1050	1007
Configuration	VERTICAL	VERTICAL	RL Voltage	-	462,464,461
Num OA Filters 1	-	2	RL Amperage	-	5.9,6.2,6.3
OA Filter Size 1	-	32X22	SF Rotation	-	CW
Num Final Filter 1	-	9	RA Damper Position	-	90%
Final Filter Size 1	-	16X25	Min OA Damper Position	-	10%
			Min OA Damper Type	-	MOTORIZED
			OA Enthalpy Setpt	-	

Motor Data		
	Design	Actual
Motor MFG	-	BALDOR
Frame	-	184TZ
Horsepower	5	5
Motor Rpm	-	1750
Phase	3	3
Rated Voltage	460	460
Rated Amperage	-	6.7

Performance Data		
	Design	Actual
MA Plenum SP	-	
Fan Suction SP	-	
Fan Discharge SP	-	
Total ESP	1.0"	
Fan Total SP	-	

Drive Data		
	Design	Actual
Motor Sheave Size	-	
Motor Bore Size	-	
Motor Sheave SetPt	-	
Fan Sheave Size	-	8
Fan Sheave Bore	-	1 7/8
Belt CL Distance	-	
Num of Belts	-	1
Belt Size	-	BX40
Belt Alignment	-	CENTER

General		
	Design	Actual
Fan Rotation Correct	-	Y
Unit Filters Clean	-	Y
Condensate Drain Installed	-	Y

Notes:
 ORIGINAL DIFFUSER DESIGN TOTALS=6300
 ADJUSTED DIFFUSER DESIGN TOTALS.

Written By: Brianna Biggs on 09/14/2023

National TAB

Project:09-18-23 WALGREENS #3909 - ARLINGTON, TX

AHU/RTU



Diffuser Supply (GRD)

RTU2/

Asset									
Asset Name	Location	Type	Size	DESIGN CFM	AK	CFM(1)	CFM(2)	FINAL CFM	% to design
SGRD1	SALES	TITUS	20X20	1313	2.78	1108	1204	1278	97.3
SGRD2	SALES	TITUS	20X20	1313	2.78	1133	1224	1248	95.0
SGRD3	SALES	TITUS	20X20	1313	2.78	1092	1197	1358	103.4
SGRD4	SALES	TITUS	20X20	1313	2.78	1123	1268	1333	101.5
Total				5252		4456	4893	5217	99.33%

National TAB

Project: 09-18-23 WALGREENS #3909 - ARLINGTON, TX

System/Unit: AHU/RTU



Asset: RTU3

AREA:

Unit Data			Test Data		
	Design	Actual		Design	Actual
MFG	YORK	YORK	SF CFM	1750	1886
Serial Num	-	N2E3656498	SF RPM	1045	
Model Num	ZJ061N08D4B5HAA2A4	ZJ061N08D4B5GCA2R4	RA CFM	1750	1886
Type	RTU	RTU	OA CFM	0	0
Configuration	VERTICAL	VERTICAL	RL Voltage	-	482,483.478
Num OA Filters 1	-	1	RL Amperage	-	3.3,3.5,3.5
OA Filter Size 1	-	22X30	SF Rotation	-	CW
Num Final Filter 1	-	4	RA Damper Position	-	100%
Final Filter Size 1	-	16X24	Min OA Damper Position	-	0%
			Min OA Damper Type	-	MOTORIZED
			OA Enthalpy Setpt	-	

Motor Data		
	Design	Actual
Motor MFG	-	MARATHON
Frame	-	56HZ
Horsepower	2	2
Motor Rpm	-	1725
Phase	3	3
Rated Voltage	460	208-230/460
Rated Amperage	-	8.2-8.4/4.2

Performance Data		
	Design	Actual
MA Plenum SP	-	
Fan Suction SP	-	
Fan Discharge SP	-	
Total ESP	1.2"	
Fan Total SP	-	

Drive Data		
	Design	Actual
Motor Sheave Size	-	5
Motor Bore Size	-	1
Motor Sheave SetPt	-	4
Fan Sheave Size	-	7
Fan Sheave Bore	-	1
Belt CL Distance	-	11
Num of Belts	-	1
Belt Size	-	A47
Belt Alignment	-	CENTER

General		
	Design	Actual
Fan Rotation Correct	-	Y
Unit Filters Clean	-	Y
Condensate Drain Installed	-	Y

Notes:

Drain line for RTU 3 is clogged, recommended nitrogen flush.

Written By: Darius Payne on 09/19/2023

National TAB

Project:09-18-23 WALGREENS #3909 - ARLINGTON, TX

AHU/RTU



Diffuser Supply (GRD)

RTU3/

Asset									
Asset Name	Location	Type	Size	DESIGN CFM	AK	CFM(1)	CFM(2)	FINAL CFM	% to design
SGRD1	PATIENT SEATING	TITUS	12"	280	1			301	107.5
SGRD2	PHARMACY	TITUS	12"	280	1			310	110.7
SGRD3	PHARMACY	TITUS	12"	280	1			291	103.9
SGRD4	PHARMACY	TITUS	12"	280	1			343	122.5
SGRD5	PHARMACY	TITUS	12"	280	1			293	104.6
SGRD6	EMPLOYEE ROOM	TITUS	12"	350	1			348	99.4
Total				1750		0	0	1886	107.77%

National TAB

Project: 09-18-23 WALGREENS #3909 - ARLINGTON, TX

System/Unit: AHU/RTU



Asset: RTU4

AREA:

Unit Data		
	Design	Actual
MFG	YORK	YORK
Serial Num	-	N2E3676891
Model Num	ZJ037C00D4B5HAA2A4	ZJ037C00D4B5GC
Type	RTU	RTU
Configuration	VERTICAL	VERTICAL
Num OA Filters 1	-	1
OA Filter Size 1	-	30x22
Num Final Filter 1	-	4
Final Filter Size 1	-	16x25

Motor Data		
	Design	Actual
Motor MFG	-	CENTURY
Frame	-	56HZ
Horsepower	1.50	1.5
Motor Rpm	-	1725
Phase	3	3
Rated Voltage	460	460
Rated Amperage	-	2.5

Drive Data		
	Design	Actual
Motor Sheave Size	-	4
Motor Bore Size	-	3/4
Motor Sheave SetPt	-	4
Fan Sheave Size	-	6
Fan Sheave Bore	-	1
Belt CL Distance	-	10
Num of Belts	-	1
Belt Size	-	A47
Belt Alignment	-	CENTER

Test Data		
	Design	Actual
SF CFM	1050	1118
SF RPM	927	
RA CFM	840	1259
OA CFM	210	241
RL Voltage	-	484,484,479
RL Amperage	-	1.9,1.9,2.1
SF Rotation	-	CW
RA Damper Position	-	90%
Min OA Damper Position	-	10%
Min OA Damper Type	-	MOTORIZED
OA Enthalpy Setpt	-	

Performance Data		
	Design	Actual
MA Plenum SP	-	
Fan Suction SP	-	
Fan Discharge SP	-	
Total ESP	1.2"	
Fan Total SP	-	

General		
	Design	Actual
Fan Rotation Correct	-	Y
Unit Filters Clean	-	Y
Condensate Drain Installed	-	Y

Notes:
IAQ Fault on unit during TAB.

Written By: Darius Payne on 09/19/2023

National TAB

Project: 09-18-23 WALGREENS #3909 - ARLINGTON, TX

System/Unit: FAN - Exhaust



Asset: EF1

AREA:WOMENS RR

Unit Data		
	Design	Actual
MFG	GREENHECK	PENNBARRY
Model Num	GB-80-4-R5	NL
Serial Num	-	NL
Type	CENTRIFUGAL	CENTRIFUGAL
Configuration	VERTICAL	VERTICAL

Motor Data		
	Design	Actual
Motor MFG	-	GENTEQ
Frame	-	60HZ
Horsepower	1/4	1/5
Motor Rpm	-	1725
Phase	1	1
Voltage (rated)	120	115
Amperage (rated)	-	3.0
Service Factor	-	NL

Drive Data		
	Design	Actual
Motor Sheave Size	-	DD
Motor Bore Size	-	DD
Motor Sheave SetPt	-	DD
Fan Sheave Size	-	DD
Fan Sheave Bore	-	DD
Belt CL Distance	-	DD
Num of Belts	-	DD
Belt Size	-	DD

Test Data		
	Design	Actual
CFM	250	242
Fan RPM	1290	LOW
Fan Rotation	-	CCW
Motor RPM	-	LOW
RL Voltage	-	120,120
RL Amperage	-	1.5,1.7
Suction ESP	-	ATM
Discharge ESP	-	ATM
Total ESP	0.375"	ATM

Completed By: Darius Payne on 09/19/2023

National TAB

Project: 09-18-23 WALGREENS #3909 - ARLINGTON, TX

System/Unit: FAN - Exhaust



Asset: EF2

AREA:MENS RR

Unit Data		
	Design	Actual
MFG	GREENHECK	PENNBARRY
Model Num	GB-80-4-R5	DX11Q
Serial Num	-	G23PZ33840
Type	CENTRIFUGAL	CENTRIFUGAL
Configuration	VERTICAL	VERTICAL

Motor Data		
	Design	Actual
Motor MFG	-	GENTEQ
Frame	-	60HZ
Horsepower	1/4	1/5
Motor Rpm	-	1725
Phase	1	1
Voltage (rated)	120	115
Amperage (rated)	-	3.0
Service Factor	-	NL

Drive Data		
	Design	Actual
Motor Sheave Size	-	DD
Motor Bore Size	-	DD
Motor Sheave SetPt	-	DD
Fan Sheave Size	-	DD
Fan Sheave Bore	-	DD
Belt CL Distance	-	DD

Test Data		
	Design	Actual
CFM	250	244
Fan RPM	1290	LOW
Fan Rotation	-	CCW
Motor RPM	-	LOW
RL Voltage	-	120,119
RL Amperage	-	1.4,1.6
Suction ESP	-	ATM
Discharge ESP	-	ATM
Total ESP	0.375"	ATM

Completed By: Darius Payne on 09/19/2023

National TAB

Project: 09-18-23 WALGREENS #3909 - ARLINGTON, TX

System/Unit: FAN - Exhaust



Asset: EF3

AREA: BREAK ROOM

Unit Data		
	Design	Actual
MFG	GREENHECK	PENNBARRY
Model Num	GB-80-4-R4	DX11Q
Serial Num	-	Q23PZ33837
Type	CENTRIFUGAL	CENTRIFUGAL
Configuration	VERTICAL	VERTICAL

Motor Data		
	Design	Actual
Motor MFG	-	GENTEQ
Frame	-	60HZ
Horsepower	1/4	1/5
Motor Rpm	-	1725
Phase	1	1
Voltage (rated)	120	115
Amperage (rated)	-	3.0
Service Factor	-	NL

Drive Data		
	Design	Actual
Motor Sheave Size	-	DD
Motor Bore Size	-	DD
Motor Sheave SetPt	-	DD
Fan Sheave Size	-	DD
Fan Sheave Bore	-	DD
Belt CL Distance	-	DD
Num of Belts	-	DD
Belt Size	-	DD

Test Data		
	Design	Actual
CFM	350	344
Fan RPM	1090	MEDIUM
Fan Rotation	-	CCW
Motor RPM	-	LO
RL Voltage	-	1.8,2.0
RL Amperage	-	119,120
Suction ESP	-	ATM
Discharge ESP	-	ATM
Total ESP	0.375"	ATM

Completed By: Darius Payne on 09/19/2023

National TAB

Project: 09-18-23 WALGREENS #3909 - ARLINGTON, TX

System/Unit: FAN - Exhaust



Asset: EF4

AREA:OFFICE

Unit Data		
	Design	Actual
MFG	GREENHECK	PENNBARRY
Model Num	GB-80-4-R5	DX11Q
Serial Num	-	G23PZ33839
Type	CENTRIFUGAL	CENTRIFUGAL
Configuration	VERTICAL	VERTICAL

Motor Data		
	Design	Actual
Motor MFG	-	GENTEQ
Frame	-	60HZ
Horsepower	1/4	1/5
Motor Rpm	-	1725
Phase	1	1
Voltage (rated)	120	115
Amperage (rated)	-	3.0
Service Factor	-	NL

Drive Data		
	Design	Actual
Motor Sheave Size	-	DD
Motor Bore Size	-	DD
Motor Sheave SetPt	-	DD
Fan Sheave Size	-	DD
Fan Sheave Bore	-	DD
Belt CL Distance	-	DD
Num of Belts	-	DD
Belt Size	-	DD

Test Data		
	Design	Actual
CFM	300	324
Fan RPM	1080	LO
Fan Rotation	-	CCW
Motor RPM	-	MEDIUM
RL Voltage	-	121,120,
RL Amperage	-	2.1,2.2
Suction ESP	-	ATM
Discharge ESP	-	ATM
Total ESP	0.375"	ATM

Completed By: Darius Payne on 09/19/2023

National TAB

Project: 09-18-23 WALGREENS #3909 - ARLINGTON, TX

System/Unit: FAN - Exhaust



Asset: EH1

AREA:PHOTO

Unit Data		
	Design	Actual
MFG	GREENHECK	MESTEK
Model Num	GB-100-4-R2	PV15
Serial Num	-	A2301908271001001
Type	CENTRIFUGAL	BELT DRIVEN
Configuration	VERTICAL	VERTICAL

Motor Data		
	Design	Actual
Motor MFG	-	BALDOR
Frame	-	56HZ
Horsepower	1/4	3/4
Motor Rpm	-	1725
Phase	1	3
Voltage (rated)	120	230/460
Amperage (rated)	-	3/1.5
Service Factor	-	1.25

Drive Data		
	Design	Actual
Motor Sheave Size	-	5
Motor Bore Size	-	5/8
Motor Sheave SetPt	-	4
Fan Sheave Size	-	7
Fan Sheave Bore	-	1
Belt CL Distance	-	12
Num of Belts	-	1
Belt Size	-	B38

Test Data		
	Design	Actual
CFM	750	0
Fan RPM	1185	NR
Fan Rotation	-	NR
Motor RPM	-	NR
RL Voltage	-	NR
RL Amperage	-	NR
Suction ESP	-	NR
Discharge ESP	-	NR
Total ESP	0.375"	NR

Completed By: Darius Payne on 09/21/2023

Notes:

Unit (EH-1) not responsive during TAB inspection. Call set for heat & call set for cool. Upon setpoint adjustment for call, motor buzzes. Motor is also hot at surface. Fault may be due to bad motor windings.

Written By: Darius Payne on 09/20/2023