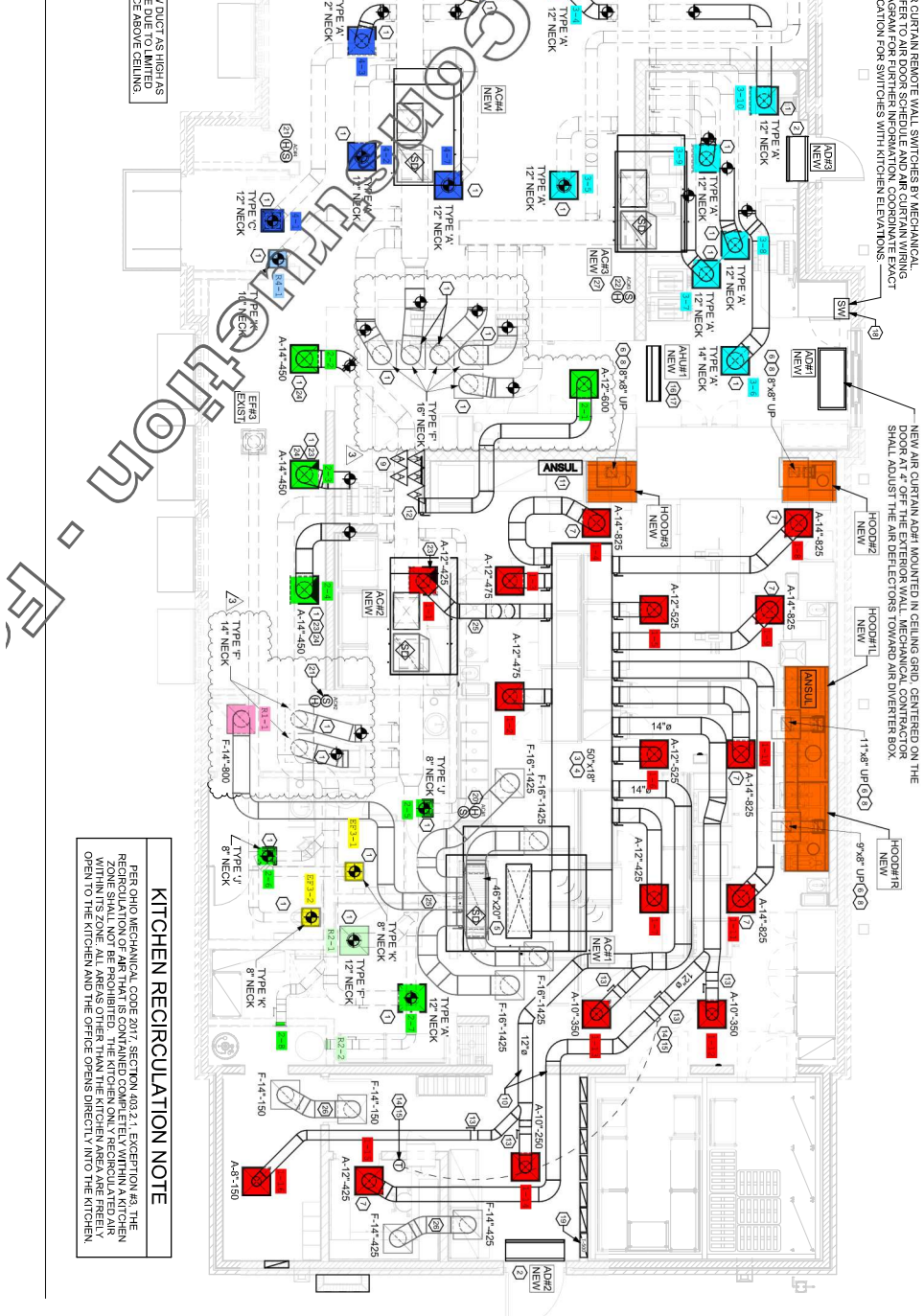


1 MECHANICAL FLOOR PLAN
1/4" = 1'-0"

FIELD VERIFY EXISTING
MECHANICAL SYSTEMS
PRIOR TO OPERING
REPLACEMENT TYPICAL.

HOLD NEW DUCTS HIGH AS
CLEARANCE ABOVE CEILING.

KITCHEN RECIRCULATION NOTE
PER OHIO MECHANICAL CODE 2017, SECTION 403.2.1, EXCEPTION 43, THE
RECIRCULATION OF AIR THAT IS CONTAINED COMPLETELY WITHIN A KITCHEN
ZONE SHALL NOT BE PROHIBITED. THE KITCHEN ONLY V. RECIRCULATED AIR
WITHIN ITS ZONE. ALL AREAS OTHER THAN THE KITCHEN AREA ARE FREELY
OPEN TO THE KITCHEN AND THE OFFICE OVERS BRIGHTLY INTO THE KITCHEN.



AIR CURTAIN REMOVE WALL SWITCHES BY MECHANICAL
REFER TO AIR DOOR SCHEDULE AND AIR CURTAIN WIRING
DIAGRAM FOR FURTHER INFORMATION. COORDINATE EXACT
LOCATION FOR SWITCHES WITH KITCHEN ELEVATIONS.

NEW AIR CURTAIN ASM MOUNTED IN CEILING GRID. CENTERED ON THE
DOOR AT 2' OFF THE EXTERIOR WALL. MECHANICAL CONTRACTOR
SHALL ADJUST THE AIR DEFLECTORS TOWARD AIR DIVERTER BOX.

HOOD#1
HOOD#2
HOOD#3
HOOD#4
HOOD#5
HOOD#6
HOOD#7
HOOD#8
HOOD#9
HOOD#10
HOOD#11
HOOD#12
HOOD#13
HOOD#14
HOOD#15
HOOD#16
HOOD#17
HOOD#18
HOOD#19
HOOD#20
HOOD#21
HOOD#22
HOOD#23
HOOD#24
HOOD#25
HOOD#26
HOOD#27
HOOD#28
HOOD#29
HOOD#30
HOOD#31
HOOD#32
HOOD#33
HOOD#34
HOOD#35
HOOD#36
HOOD#37
HOOD#38
HOOD#39
HOOD#40
HOOD#41
HOOD#42
HOOD#43
HOOD#44
HOOD#45
HOOD#46
HOOD#47
HOOD#48
HOOD#49
HOOD#50
HOOD#51
HOOD#52
HOOD#53
HOOD#54
HOOD#55
HOOD#56
HOOD#57
HOOD#58
HOOD#59
HOOD#60
HOOD#61
HOOD#62
HOOD#63
HOOD#64
HOOD#65
HOOD#66
HOOD#67
HOOD#68
HOOD#69
HOOD#70
HOOD#71
HOOD#72
HOOD#73
HOOD#74
HOOD#75
HOOD#76
HOOD#77
HOOD#78
HOOD#79
HOOD#80
HOOD#81
HOOD#82
HOOD#83
HOOD#84
HOOD#85
HOOD#86
HOOD#87
HOOD#88
HOOD#89
HOOD#90
HOOD#91
HOOD#92
HOOD#93
HOOD#94
HOOD#95
HOOD#96
HOOD#97
HOOD#98
HOOD#99
HOOD#100