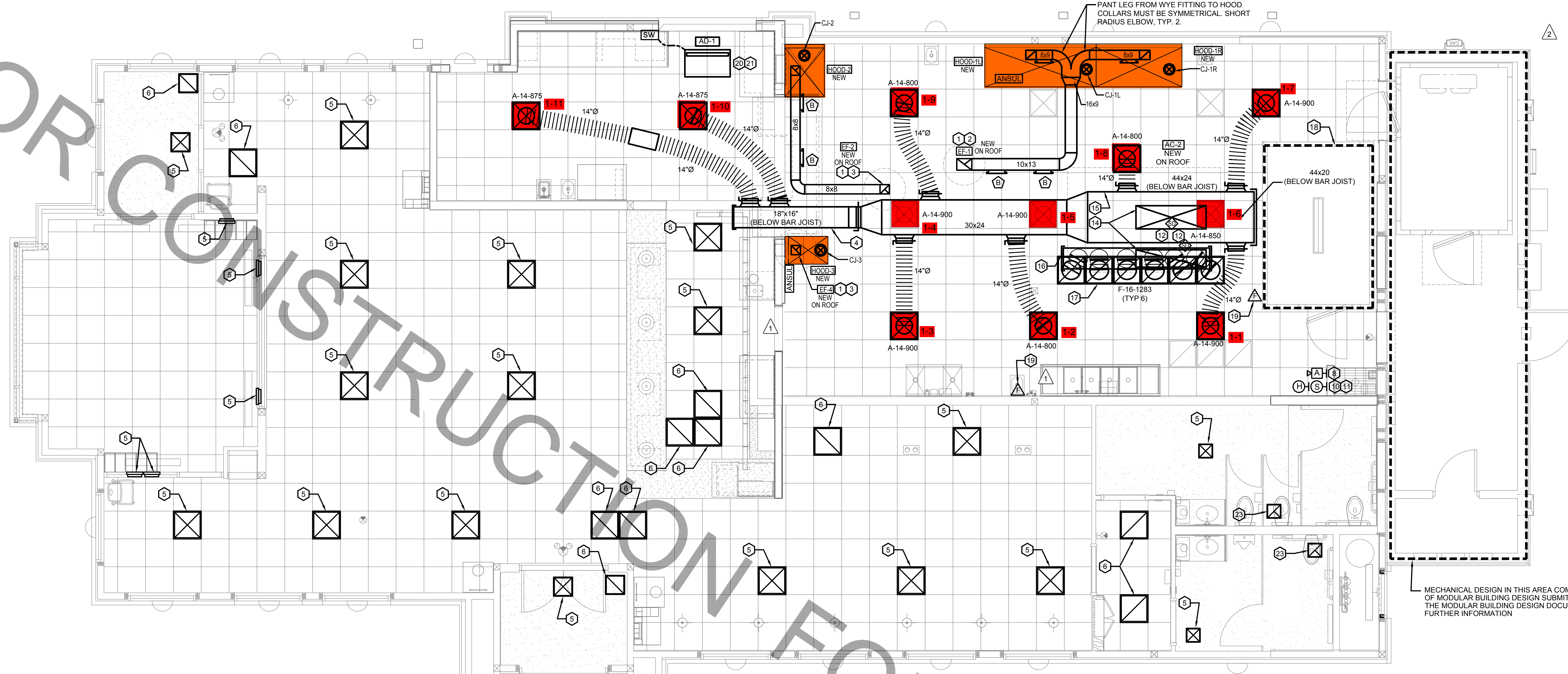


FOR CONSTRUCTION



1 MECHANICAL RENOVATION FLOOR PLAN
SCALE: 1/4"=1'-0"
TRUE NORTH PLAN NORTH

SHEET NOTES

- DUCT SIZES SERVING DIFFUSERS AND GRILLES ARE SAME SIZE AS DIFFUSER OR GRILLE NECK UNLESS NOTED OTHERWISE.
- FLEXIBLE DUCT NOT SHOWN FOR CLARITY. ALL TAKE-OFFS SHALL INCLUDE FLEXIBLE DUCT. SEE DETAIL FOR FLEXIBLE DUCT INSTALLATION REQUIREMENTS.
- AT EACH PIECE OF ROOF EQUIPMENT, PROVIDE A PLASTIC ENGRAVED LABEL WITH 1" HIGH WHITE LETTERS ON A BLACK BACKGROUND. THE LABEL IS TO HAVE A SELF ADHESIVE BACKING.
- UNLESS NOTED OTHERWISE, MC TO ADJUST ALL DIFFUSER AIR PATTERN DEFLECTORS TO THROW HORIZONTALLY ALONG THE CEILING.
- SUPPORT ALL DUCT DROPS AT BASE OF DROP FROM STRUCTURE.

FLEX DUCT SIZE

RANGE	SIZE	RANGE	SIZE
0 -80 CFM	6" DIA.	511 -750 CFM	14" DIA.
81 -170 CFM	8" DIA.	701 -1100 CFM	16" DIA.
171 -300 CFM	10" DIA.	1101 -1450 CFM	18" DIA.
301 -510 CFM	12" DIA.	1451 -1900 CFM	20" DIA.

- NOTES:**
- BASED ON WIRE HELIX FLEXIBLE DUCT: TYPE FLEX-MASTER
 - UL LISTING: U-181 / ETL CLASS 1 AIR DUCT
 - STANDARD CODE: NFPA 90A AND 90B, BOCA, SBBC HUD/FHA, MIN PROPERTY STD.
 - FLAME SPREAD.....LESS THAN 25
 - SMOKE DEVELOP.....LESS THAN 50
 - MIN R8.0 FOR ATTIC/UNCONDITIONED SPACE.
 - MIN R6.0 FOR RETURN CONDITIONED SPACE.
 - MANUFACTURER IS TO BE USED AS A BASIS FOR DESIGN. CONTACT ENGINEER OF RECORD TO SUBMIT ON APPROVED EQUALS.

LEGEND

A-12-400	TYPE - NECK SIZE - CFM	EF-1	EXHAUST FAN #1
⊙	REMOTE TEMPERATURE SENSOR	⚠	PULL STATION
⊕	HUMIDITY SENSOR	⊗	RETURN/EXHAUST
⊠	STROBE AUDIO/VISUAL ALARM-ANNUNCIATOR	⊗	SUPPLY DIFFUSER (TYP.)
12x18	DUCT SIZE (REVERSE FOR ELEVATION VIEWS): 1ST NUMBER - HORIZONTAL DIMENSION 2ND NUMBER - VERTICAL DIMENSION	Ⓜ	PLAN NOTE REFERENCE
AC-1	AIR CONDITIONING UNIT #1 (TYP.)	ⓐ	CONTROL PANEL
↔	MANUAL VOLUME DAMPER	Ⓢ	SMOKE DETECTOR

HVAC GENERAL NOTES

- DUCT SIZES SERVING DIFFUSERS AND GRILLES ARE SAME SIZE AS DIFFUSER OR GRILLE NECK UNLESS NOTED OTHERWISE.
- MECHANICAL CONTRACTOR SHALL BALANCE HVAC SYSTEM AS SHOWN ON THE PLAN & RTU SCHEDULE. IF AIRFLOWS DIFFER BY MORE THAN 5%, CONTACT CFA CONSTRUCTION MANAGER.
- NO PIPING OR DUCTWORK ALLOWED ABOVE ANY ELECTRICAL/CONTROL PANELS.
- COORDINATE NEW WORK WITH EXISTING CONDUITS, STRUCTURE, & PIPING. FIELD VERIFY EXISTING CONDITIONS PRIOR TO COMMENCING WORK. CONTRACTOR TO NOTIFY DESIGN TEAM WITHOUT DELAY IF ACTUAL LOCATION OF EXISTING MECHANICAL EQUIPMENT DOES NOT MATCH FLOOR PLAN.
- CONTRACTOR SHALL CLEAN & REFURBISH ALL EXISTING DUCTWORK. PATCH & REPAIR OPENING AIR TIGHT OF EXISTING DUCTWORK AS REQUIRED (TYPICAL ALL). FIELD VERIFY AND COORDINATE ALL EXISTING HVAC SIZES, LOCATIONS, AND CONDITION PRIOR TO BID.
- REUSE AND REWORK EXISTING HVAC DUCTWORK. PROVIDE NEW SECTION FOR RECONNECTION AS REQUIRED. FIELD VERIFY ALL REQUIREMENTS PRIOR TO BID.
- CONTRACTOR SHALL BALANCE, INSPECT, REPAIR, OR REPLACE AS NECESSARY IF REQUIRED FOR EXISTING CEILING MOUNTED AIR DEVICES TO REMAIN. FIELD VERIFY AND COORDINATE EXACT SIZE, AIR QUANTITY, LOCATION, AND CONDITION PRIOR TO BID. AIR FLOW SHALL REMAIN AS IS UNLESS NOTED ON PLAN, OR DIRECTED BY CONSTRUCTION MANAGER. ANY DEFICIENCIES AND OR DISCREPANCIES SHALL BE REPORTED TO ARCHITECT/ENGINEER IMMEDIATELY. COORDINATE AIR BALANCE RESULTS WITH CONSTRUCTION MANAGER.

HVAC KEY NOTES

- TRANSITION IN VERTICAL DROP FROM FULL SIZE OF CURB OPENING TO SIZE SHOWN. TRANSITION WITHIN CURB WHERE REQUIRED TO AVOID STRUCTURE. NO TURNING VANES IN ELBOW.
- PROVIDE NEW KITCHEN HOOD EXHAUST FAN REPLACING THE EXISTING FAN THROUGH THE EXISTING ROOF OPENING. PROVIDE NEW FAN WITH NEW CURB LOCATION SHOWN ON PLAN. ENSURE A MINIMUM OF 10 FT FROM ANY NEW OR EXISTING OUTSIDE AIR INTAKE. COORDINATE EXACT LOCATION IN FIELD WITH EXISTING EQUIPMENT AND PIPING. SEE DETAIL ON M3.1 FOR ORIENTATION OF HINGE SIDE OF FAN ON CURB.
- PROVIDE NEW KITCHEN HOOD EXHAUST FAN WITH NEW CURB LOCATION SHOWN ON PLAN. LOCATE A MINIMUM OF 10 FT FROM PARAPET WALLS OR FROM ANY NEW OR EXISTING OUTSIDE AIR INTAKE. COORDINATE EXACT LOCATION IN FIELD WITH EXISTING EQUIPMENT AND PIPING. SEE DETAIL ON M3.1 FOR ORIENTATION OF HINGE SIDE OF FAN ON CURB.
- CJ-3 MOUNTED INSIDE CABINERY SERVING SCJ PLENUM, SEE DETAIL M6.1.
- CONTRACTOR SHALL REPLACE EXISTING SUPPLY AIR DIFFUSERS. CONTRACTOR SHALL EXTEND SUPPLY AIR DUCT AS REQUIRED. CFM IS EXISTING TO REMAIN.
- CONTRACTOR SHALL REPLACE EXISTING RETURN AIR GRILLES. CONTRACTOR SHALL EXTEND RETURN AIR DUCT AS REQUIRED. CFM IS EXISTING TO REMAIN.
- NOT USED.
- STRONG SYSTEMS SHALL SUPPLY AND INSTALL CO2 ANNUNCIATOR MOUNTED AT 8' AFF. ELECTRICAL CONTRACTOR TO PROVIDE SINGLE GANG J-BOX WITH 1/2" CONDUIT EXTENDED TO ABOVE ACCESSIBLE CEILING SPACE. INSTALL PER MANUFACTURER'S RECOMMENDATIONS AND PER LOCAL CODE. FIELD VERIFY EXACT LOCATION AND ALL REQUIREMENTS PRIOR TO BID AND CONSTRUCTION. FOR MORE INFORMATION CONTACT: STRONG SYSTEMS INTERNATIONAL, INC. CHRIS VERCH (770) 729-1199 OR (770) 462-2501.
- NOT USED.
- MOUNT NEW LENNOX HUMIDITY SENSOR ON WALL ABOVE SPACE TEMP SENSOR AND ROUTE WIRING TO UNIT ON ROOF.
- MOUNT NEW REMOTE TEMPERATURE SENSOR ON WALL AT 5'-0" AFF AND ROUTE WIRING BACK TO TEMP CONTROL PANEL. FOR SENSOR SERVING KITCHEN AC-1. COORDINATE EXACT LOCATION WITH KITCHEN EQUIPMENT PRIOR TO BID AND CONSTRUCTION.
- PROVIDE A LENNOX FACTORY INSTALLED SUPPLY SIDE & RETURN SIDE SMOKE DETECTORS. REFER TO SCHEDULE ON SHEET M2.1 AND LENNOX SMOKE DETECTOR AND ANNUNCIATOR WIRING DIAGRAM ON SHEET M4.1.
- NOT USED.
- 60x20 SUPPLY AIR RTU DROP AND 60x18 RETURN AIR DROP FROM NEW KITCHEN AC-1.
- SUPPLY AIR DUCT ROUTED BETWEEN BAR JOIST AS HIGH AS POSSIBLE. REFER TO SUPPLY & RETURN DROP GEOMETRY DETAIL ON SHEET M3.1.
- 24x40 RETURN AIR PLENUM ROUTED BETWEEN BAR JOIST AS HIGH AS POSSIBLE. REFER TO SUPPLY & RETURN DROP GEOMETRY DETAIL ON SHEET M3.1.
- 18"Ø BOTTOM TAP RETURN AIR PLENUM WITH SPIN-IN FITTINGS AND DAMPER. REFER TO AIR DEVICE SCHEDULE FOR FURTHER INFORMATION.
- CONTRACTOR SHALL INSTALL AND ROUTE NEW INSULATED REFRIGERANT PIPING FROM ROOF MOUNTED REMOTE CONDENSER TO FREEZER & COOLER EVAPORATORS. REFER TO AIR DEVICE SCHEDULE FOR FURTHER INFORMATION.
- PROPOSED REMOTE ANSUL PULL LOCATION. ANSUL INSTALLER TO COORDINATE FINAL FIELD LOCATION.
- AIR CURTAIN (AD-1) MOUNTED WITHIN CEILING CENTERED ABOVE DRIVE THRU DOOR 1'-6" FROM THE EXTERIOR WALL. CONTRACTOR TO ADJUST DEFLECTOR ACCORDINGLY TO COVER MAJORITY OF DRIVE THRU DOOR. ATTACH AIR CURTAIN TO STRUCTURE USING 3/8" ALL THREAD SUPPORTS.
- FIELD WIRE FACTORY PROVIDED CONTROLS. SEE KITCHEN ELEVATIONS FOR EXACT LOCATION OF SWITCH.
- NOT USED.
- CONTRACTOR SHALL REPLACE EXISTING EXHAUST AIR DIFFUSERS. CONTRACTOR SHALL EXTEND EXHAUST AIR DUCT AS REQUIRED. CFM IS EXISTING TO REMAIN.

F2F & OMD CANOPY NOTES

- REFER TO SHEET M1.3 FOR FURTHER INFORMATION REGARDING CANOPY SCOPE. MECHANICAL CONTRACTOR TO PURCHASE AND MOUNT NEW CIRCULATION FANS & HEATERS. COORDINATE EXACT NUMBER OF FANS & HEATERS WITH CANOPY MANUFACTURER.

NOTE:
GENERAL CONTRACTOR TO HIRE REFRIGERATION CONTRACTOR TO RECLAIM REFRIGERANT FROM EXISTING ICE MAKER AND RECHARGE EXISTING ICE MAKER AFTER KITCHEN TILE IS INSTALLED.

NOTE:
REFER TO SCHEDULES AND DETAILS MECHANICAL SHEET FOR FURTHER INFORMATION.

NOTE:
MECHANICAL CONTRACTOR TO PROVIDE TEST AND BALANCE REPORT BEFORE FINAL INSPECTION.

NOTE:
ALL NEW HOODS SHALL BE RATED WITH ONE INCH THICK LAYER OF FACTORY INSTALLED INSULATION TO MEET "ZERO INCH CLEARANCE" TO COMBUSTIBLE MATERIALS. HOOD SHALL BE CERTIFIED BY ETL SPECIFICATIONS, AND SHALL CONFORM TO UL STANDARD 710, BUILT PER NFPA 96 SECTION 4.2.2., AND NSF LISTED.

NOTE:
IF BALANCING DAMPERS ARE NOT EXISTING IN THE BRANCH DUCT OR AT THE TAKE-OFF, MECHANICAL CONTRACTOR SHALL SUPPLY AND INSTALL NEW BALANCING DAMPERS WITHIN THE BRANCH DUCT (TYPICAL).

5200 Buffington Rd.
Atlanta, Georgia
30349-2998

cph
www.cphcorp.com
**A Full Service
A & E Firm**
Plans Prepared By:
CPH Design, Inc.
State of Alabama Licenses:
Engineer No. 2750-E
Surveyor No. CA-999-L-S
Landscape No. N/A

7/07/2020

FOR CONSTRUCTION

No.	Date	Revised
1	07/2020	AS1 #1 - OPERATOR CHANGES
2	07/2020	ADDENDUM #1 - MODULAR CONVERSION

Designed: SJM
Drawn: JRH
Checked: SJM
Job No.: C29114
Version: 2019-058
Date: 07/2020 © 2020

MECHANICAL RENOVATION FLOOR PLAN

CHICK-FIL-A
3711 US Highway 280
PHENIX CITY, ALABAMA 36867

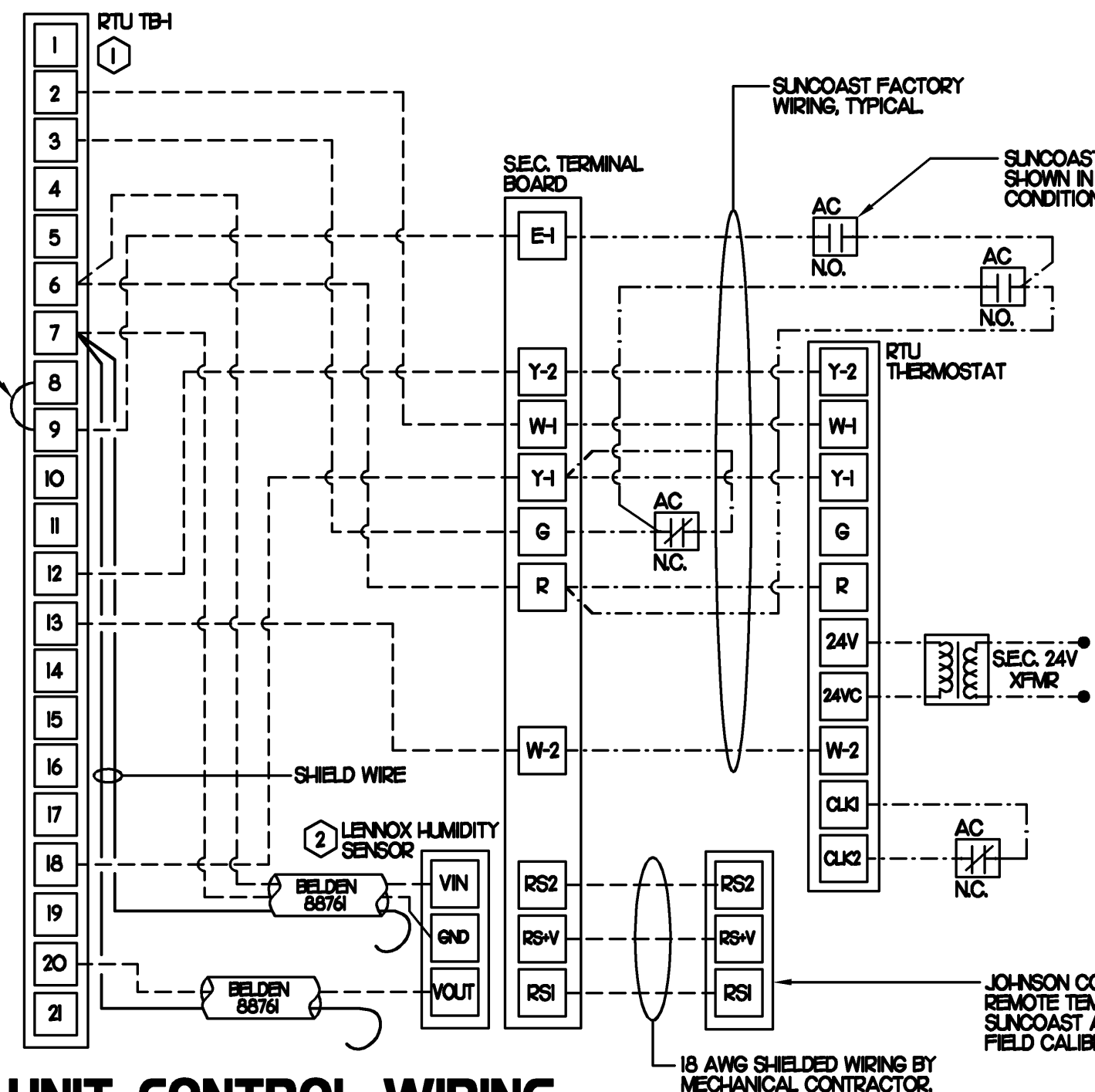
THIS SHEET NOT VALID FOR CONSTRUCTION WITHOUT COMPLETE SET OF PLANS.

Sheet No.
M-1.1

LEGEND			
A-12-400	TYPE - NECK SIZE - CFM	EF#1	EX-HAUST FAN #1 (TYP)
	SPIN-IN FITTING WITH MANUAL BALANCING DAMPER, WITHOUT SCOOP	ACH#1	AIR CONDITIONING UNIT #1 (TYP)
	RETURN/EXHAUST (TYP)		SUPPLY DIFFUSER, SQ FACE (TYP)
	REMOTE TEMPERATURE SENSOR		PLAN NOTE REFERENCE
	HUMIDITY SENSOR		MANUAL VOLUME DAMPER
	SMOKE DETECTOR		
12X18	DUCT SIZE 1ST NUMBER - HORIZONTAL DIMENSION 2ND NUMBER - VERTICAL DIMENSION		DIRECTION OF THROW ON DIFFUSER

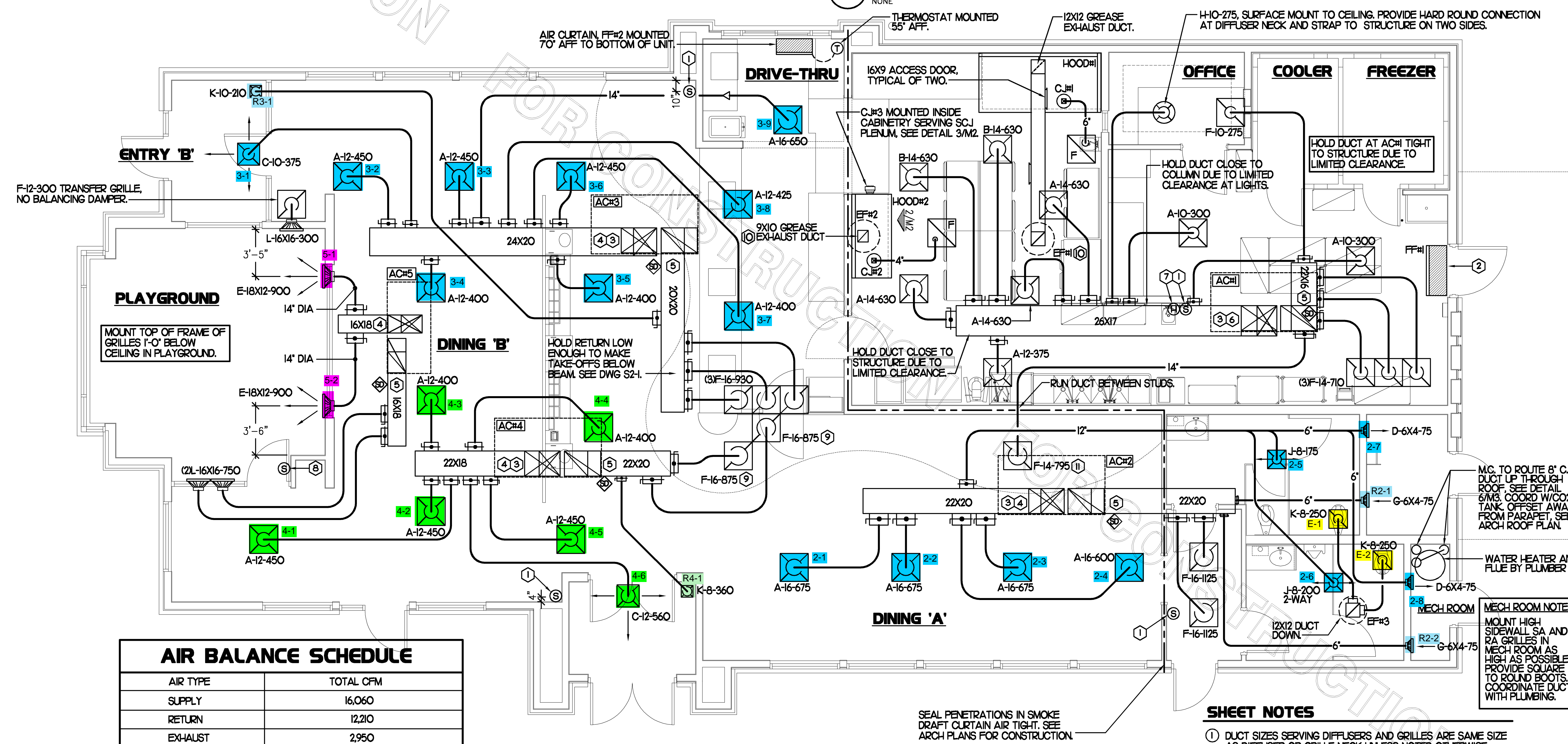
- ### KEY NOTES
- MOUNT REMOTE SENSOR ON WALL, AT 5'-0" AFF AND ROUTE WIRING BACK TO SUNCOAST TEMP CONTROL PANEL.
 - AIR CURTAIN MOUNTED OVER DOOR HEADER AT 7'-5" AFF TO BOTTOM OF UNIT. LOCATE PLUNGER TYPE MICROSWITCH IN DOOR FRAME ON STRIKE SIDE.
 - BRANCH TAKE-OFFS ARE NOT TO BE LOCATED CLOSER THAN 3'-0" FROM THE ELBOW AT THE SUPPLY AIR DROP FROM CURB.
 - TRANSITION IN VERTICAL DROP FROM FULL SIZE OF CURB OPENING TO SIZE SHOWN, PROVIDE TURNING VANES IN ELBOW.
 - TRANSITION IN VERTICAL DROP FROM FULL SIZE OF CURB OPENING TO SIZE SHOWN, NO TURNING VANES IN ELBOW.
 - HOLD DUCT CLOSE TO WALL AT HAND SINK TO PROVIDE MAXIMUM CLEARANCE DUE TO LIGHT FIXTURES. TRANSITION IN VERTICAL DROP FROM FULL SIZE OF CURB OPENING TO 26X17. PROVIDE TURNING VANES IN ELBOW.
 - MOUNT LENNOX HUMIDITY SENSOR ON WALL, ABOVE SPACE TEMP SENSOR AND ROUTE WIRING TO UNIT ON ROOF.
 - MOUNT REMOTE SENSOR FOR PLAYGROUND 10'-4" AFF. ROUTE WIRING BACK TO SUNCOAST TEMP CONTROL PANEL.
 - INSULATION ON DUCT DROP THROUGH UPPER CEILING TO STOP AT UPPER CEILING PENETRATION. SAND/DEGREASE GALVANIZED SHEET METAL AND PAINT FLAT WHITE. CEILING TILE AT UPPER CEILING TO BE CUT TO FIT AROUND DUCT DROP.
 - EF#1 AND EF#2 MUST BE LOCATED A MINIMUM OF 10 FT FROM PARAPETS.

LEGEND	
SEC.	SUNCOAST ENVIRONMENTAL CONTROLS OFA-500 ENERGY MGT PANEL
AC	SUNCOAST FACTORY INSTALLED AND WIRED A/C RELAY, ENERGIZED BY PULLING STORE SWITCH IN 'STORE OCCUPIED' POSITION.
- - -	18 GA. WIRING BY CONTRACTOR
---	RTU FACTORY WIRING
---	SEC. FACTORY WIRING



- ### NOTES
- EXCEPT AT ACH, CHANGE IBC BOARD ECTO PARAMETER 3.01 FOR LCA UNITS FROM THE DEFAULT SETTING TO ZERO. THIS WILL CAUSE THE O.A. DAMPER TO OPEN ON 'OCCUPIED' START. THE O.A. DAMPER AT ACH WILL REMAIN CLOSED FOR THE FIRST 60 MINUTES AFTER 'OCCUPIED' START.
 - MECHANICAL CONTRACTOR SHALL MAKE PLASTIC LAMINATE OF THIS DETAIL AND INSTALL PERMANENTLY ON INSIDE DOOR OF ROOFTOP UNIT CONTROL COMPARTMENT.
 - SEE DETAIL 5/8/3 FOR SMOKE DETECTOR AND ANNUNCIATOR WIRING.
 - HUMIDITROL ECTO PARAMETERS TO BE FIELD SET AS FOLLOWS:
ECTO 424 VALUE SET TO 7
ECTO 425 VALUE SET TO 55%
- ### KEYED NOTES
- 18 AWG WIRING TO RTU TO BE ROUTED TO UNIT THRU FACTORY WIREWAY.
 - WIRING TO HUMIDITY SENSOR TO BE MADE WITH TWO SEPARATE PLS OF SHIELDED TWISTED PAIR. TERMINATE SHIELD WIRES AT TB-7, LEAVE OPEN AT SENSOR.

2 ROOFTOP UNIT CONTROL WIRING

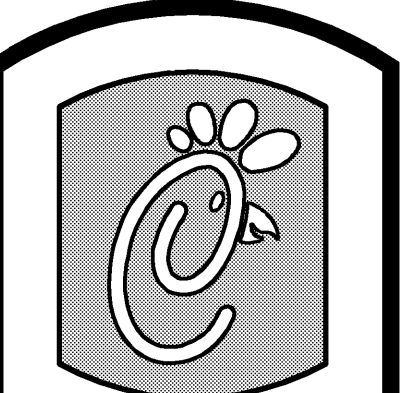


AIR BALANCE SCHEDULE

AIR TYPE	TOTAL CFM
SUPPLY	16,060
RETURN	12,210
EX-HAUST	2,950
OUTSIDE AIR	3,850
BUILDING POSITIVE PRESSURE	900

1 MECHANICAL FLOOR PLAN

1/4" = 1'-0"



5200 Buffington Rd.
Atlanta Georgia,
30349-2998

Revisions:
Mark Date By

Mark Date By

Mark Date By

Seal

BENOR ENGINEERING, LLC
3000 Langford Road
Building 2400
Norcross, GA 30071
(770) 728-4422, bus
(770) 728-0490, fax
rdbennor@midwestspring.com

STORE
Chick-fil-A
FSU 03-D
HWY 280 &
RAILROAD STREET
PHENIX CITY,
ALABAMA

SHEET TITLE
MECHANICAL
FLOOR PLAN

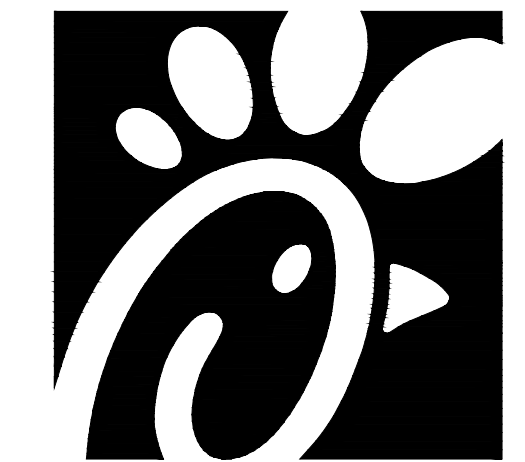
DWG EDITION 03.8

Job No. : 4078
Store : 1815
Date : 9-16-04
Drawn By : RWW
Checked By : RDB

Sheet

M-1

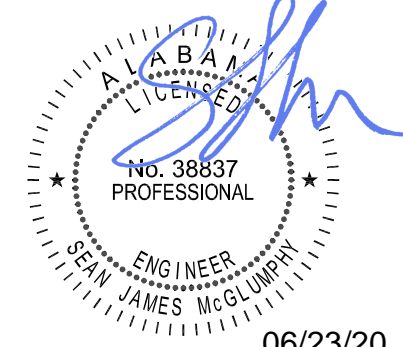
BIM 360/IAL_01815_Phenix City_Phenix City_REI_S03_01815_PHENIX CITY_ARC_Building Addition A.rvt
 6/22/2020 4:53:16 PM
 30-01815-M101-MOD-MECHANICAL PLAN



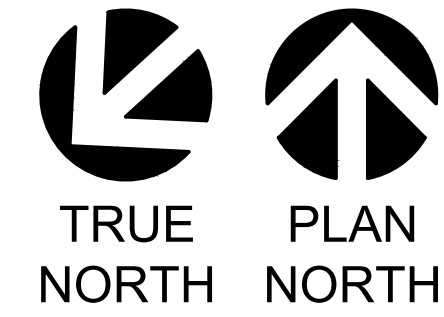
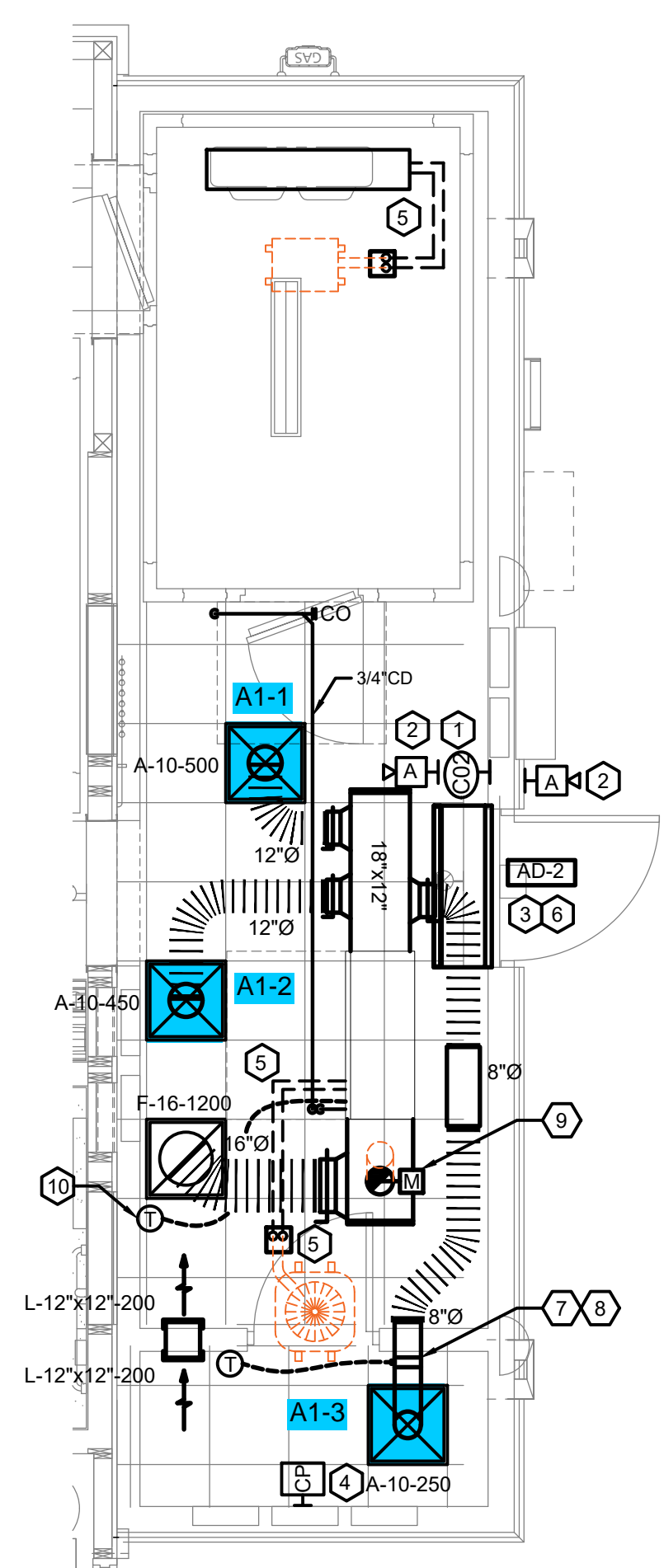
Chick-Fil-A
 5200 Buffington Road
 Atlanta, Georgia
 30349-2998



www.cphcorp.com
**A Full Service
 A & E Firm**
 Plans Prepared By
CPH, Inc.
 State of Georgia Licenses:
 Engineer No. PEF006331
 Surveyor No. LSF000870
 Architect No. N/A
 Landscape No. N/A



06/23/20



1 MECHANICAL RENOVATION FLOOR PLAN
 SCALE: 1/4"=1'-0"

OUTSIDE AIR VENTILATION CALCULATION									
MARK	AREA SERVED	SQFT	# OF PEOPLE	CFM REQ PER PERSON	CFM REQ PER SQFT	ZONE EFFECT	OA CFM REQUIRED	OA CFM DESIGNED	
AHU-1	MULTIPURPOSE	166	1	5	0.06	0.8	19	180	
	OFFICE	35	1	5	0.06	0.8	9	48	
TOTAL CALCULATED OA CFM FOR: RTU-9							0.8	28	228

NOTE:
 1. ALL CALCULATIONS PERFORMED IN ACCORDANCE WITH IMC 2015 CHAPTER 4.

AIR DOOR SCHEDULE								
MARK	CFM	VELOCITY	HEATING CAPACITY	HP	AREA SERVED	MODEL	MANUFACTURER	REMARKS
AD-2	3867	4220 FPM	N/A	3/4 HP	REAR DOOR	RBT-1-48	POWERED AIRE	1

NOTES:
 • CHICK-FIL-A HAS A NATIONAL ACCOUNT WITH TOM BARROW COMPANY FOR THE AIR DOORS. THE MECHANICAL CONTRACTOR SHALL PURCHASE THE AIR DOORS DIRECTLY FROM TOM BARROW COMPANY. CONTACT MR. SCOTT GEORGE AT 404-351-1010. FOR PRICING AND AVAILABILITY. AIR DOORS NOT PURCHASED THRU TOM BARROW COMPANY WILL NOT BE ACCEPTED.

REMARKS:
 1. FACTORY PROVIDED MAGNETIC DOOR CONTACT WITH FACTORY INSTALLED LOW VOLTAGE CONTROLS LOCATED IN AIR DOOR CABINET.

AIR DEVICE SCHEDULE									
MARK	DESCRIPTION	LOCATION	NECK SIZE	FACE SIZE	FRAME TYPE	REMARKS			
A	PRICE MODEL APCD ALUMINUM SUPPLY AIR DIFFUSER WITH INDIVIDUALLY ADJUSTABLE CURVED AIR PATTERN CONTROLLERS.	BOH	VARIES	24"x24"	LAY-IN	1,2			
F	PRICE MODEL 80 EGGRATE RETURN AIR GRILLE WITH REMOVABLE WHITE CORE. FACTORY FLAT BLACK BACKPAN AND ROUND NECK.	BOH	VARIES	24"x24"	LAY-IN	1,2			
L	PRICE MODEL ZT ALUMINUM SIDEWALL RETURN GRILLE, FRONT BLADE PARALLEL TO LONG SIDE.	BOH	12"x12"	14"x14"	SURFACE	1			

NOTES:
 • CHICK-FIL-A HAS A NATIONAL ACCOUNT WITH TOM BARROW COMPANY FOR THE AIR DEVICES. THE MECHANICAL CONTRACTOR SHALL PURCHASE THE AIR DEVICES DIRECTLY FROM TOM BARROW COMPANY. CONTACT MR. SCOTT GEORGE AT 404-351-1010. FOR PRICING AND AVAILABILITY. AIR DEVICES NOT PURCHASED THRU TOM BARROW COMPANY WILL NOT BE ACCEPTED.

REMARKS:
 1. STANDARD OFF WHITE FINISH
 2. FACTORY INSULATED R-6 BACKPAN.

- HVAC KEY NOTES**
- STRONG SYSTEMS SHALL SUPPLY AND INSTALL CO2 SENSOR ANALOG AX80. SENSOR SHALL BE MOUNTED AT 12" AFF WITH SPLASH GUARD AND CAGE. ELECTRICAL CONTRACTOR TO PROVIDE SINGLE-GANG J-BOX WITH 1/2" CONDUIT EXTENDED TO ABOVE ACCESSIBLE CEILING SPACE. INSTALL PER MANUFACTURER'S RECOMMENDATIONS AND PER LOCAL CODE REQUIREMENTS. FIELD VERIFY EXACT LOCATION AND ALL REQUIREMENTS PRIOR TO BID AND CONSTRUCTION. FOR MORE INFORMATION CONTACT: STRONG SYSTEMS INTERNATIONAL, INC. CHRIS VERCH (770) 728-1199 OR (770) 462-2501.
 - STRONG SYSTEMS SHALL SUPPLY AND INSTALL CO2 ANNUNCIATOR MOUNTED AT 60" AFF. ELECTRICAL CONTRACTOR TO PROVIDE SINGLE-GANG J-BOX WITH 1/2" CONDUIT EXTENDED TO ABOVE ACCESSIBLE CEILING SPACE. INSTALL PER MANUFACTURER'S RECOMMENDATIONS AND PER LOCAL CODE. FIELD VERIFY EXACT LOCATION AND ALL REQUIREMENTS PRIOR TO BID AND CONSTRUCTION. FOR MORE INFORMATION CONTACT: STRONG SYSTEMS INTERNATIONAL, INC. CHRIS VERCH (770) 728-1199 OR (770) 462-2501.
 - PROVIDE NEW AIR CURTAIN (AD-2) AS SHOWN ON PLAN. FIELD VERIFY EXACT REQUIREMENTS PRIOR TO BID.
 - STRONG SYSTEMS SHALL SUPPLY AND INSTALL CO2 CENTRAL CONTROL UNIT MOUNTED AT 60" AFF. ELECTRICAL CONTRACTOR TO PROVIDE SINGLE-GANG J-BOX WITH 1/2" CONDUIT EXTENDED TO ABOVE ACCESSIBLE CEILING SPACE. INSTALL PER MANUFACTURER'S RECOMMENDATIONS AND PER LOCAL CODE. FIELD VERIFY EXACT LOCATION AND ALL REQUIREMENTS PRIOR TO BID AND CONSTRUCTION. COORDINATE WITH ELECTRICAL DRAWING FOR EXACT LOCATION. FOR MORE INFORMATION CONTACT: STRONG SYSTEMS INTERNATIONAL, INC. CHRIS VERCH (770) 728-1199 OR (770) 462-2501.
 - CONTRACTOR SHALL INSTALL AND ROUTE NEW INSULATED REFRIGERANT PIPING FROM ROOF MOUNTED REMOTE CONDENSER TO EVAPORATORS. PROVIDE PIPE PORTALS FOR REFRIGERANT PENETRATION THRU ROOF.
 - AIR CURTAIN MOUNTED OVER DOOR HEADER AT 7'-2" AFF TO BOTTOM OF UNIT. PROVIDE BLOCKING IN WALL BEHIND AIR CURTAIN. USE FACTORY PRE-PUNCHED MOUNTING HOLES ON BACK SIDE OF AIR CURTAIN ONLY. ATTACH AIR CURTAIN TO WALL USING 3/8" LAG BOLTS. LENGTH AS REQUIRED TO FULLY PENETRATE BLOCKING. LOCATE MAGNETIC CONTACT TYPE MICROSWITCH IN DOOR FRAME ON STRIKE SIDE.
 - YOUNG REGULATOR 8" MODEL 2010 ROUND ZONE DAMPER WITH MODEL T-312CE AUTOMATIC CHANGEOVER THERMOSTAT. MOUNT TSTAT AT 4'-0" AFF. POWER OPEN/SRING CLOSE. ADJUST MECHANICAL LIMIT FOR 50 CFM MINIMUM ARIELOW. CHICK-FIL-A HAS A NATIONAL ACCOUNT WITH TOM BARROW COMPANY FOR THE ZONE DAMPER. THE MECHANICAL CONTRACTOR SHALL PURCHASE THE ZONE DAMPER DIRECTLY FROM TOM BARROW COMPANY. CONTACT MR. SCOTT GEORGE AT 404-351-1010. FOR PRICING AND AVAILABILITY. ZONE DAMPERS NOT PURCHASED THRU TOM BARROW COMPANY WILL NOT BE ACCEPTED.
 - PROVIDE 120V/24V 50 VA TRANSFORMER TO SERVE YOUNG REGULATOR ZONE DAMPER ACTUATOR AND THERMOSTAT. POWER TRANSFORMER FROM 120V POWER CIRCUIT THAT REMAINS LIVE 24/7. PROVIDE ALL NECESSARY WIRING AND COMPONENTS TO MAKE CONTROL AND POWER CONNECTIONS TO TRANSFORMER. ZONE DAMPER AND THERMOSTAT PER MANUFACTURER'S IOM. THERE IS NO INTERLOCKING OR MONITORING BY WAY OF THE S.E.C. CFA-500 PANEL. SEE WIRING DIAGRAMS ON M-501.
 - 10"Ø OUTSIDE AIR DUCT ROUTED UP THRU ROOF. PROVIDE MOTORIZED DAMPER IN OUTSIDE AIR DUCT AND INTEGRATE WITH AIR HANDLING UNIT CONTROLS. TERMINATE OUTSIDE AIR DUCT ON ROOF WITH GOOSENECK AND BIRDSCREEN OVER OPENING.
 - MOUNT TEMPERATURE SENSOR 48" AFF IN BOH SPACE. COORDINATE EXACT LOCATION WITH OWNER.

- SHEET NOTES**
- DUCT SIZES SERVING DIFFUSERS AND GRILLES ARE SAME SIZE AS DIFFUSER OR GRILLE NECK UNLESS NOTED OTHERWISE.
 - FLEXIBLE DUCT NOT SHOWN FOR CLARITY. ALL TAKE-OFFS SHALL INCLUDE FLEXIBLE DUCT. SEE DETAIL FOR FLEXIBLE DUCT INSTALLATION REQUIREMENTS.
 - AT EACH PIECE OF ROOF EQUIPMENT, PROVIDE A PLASTIC ENGRAVED LABEL WITH 1" HIGH WHITE LETTERS ON A BLACK BACKGROUND. THE LABEL IS TO HAVE A SELF ADHESIVE BACKING.
 - UNLESS NOTED OTHERWISE, MC TO ADJUST ALL DIFFUSER AIR PATTERN DEFLECTORS TO THROW HORIZONTALLY ALONG THE CEILING.
 - SUPPORT ALL DUCT DROPS AT BASE OF DROP FROM STRUCTURE.

FLEX DUCT SIZE

RANGE	SIZE	RANGE	SIZE
0-80 CFM	6" DIA.	511-750 CFM	14" DIA.
81-170 CFM	8" DIA.	701-1100 CFM	16" DIA.
171-300 CFM	10" DIA.	1101-1450 CFM	18" DIA.
301-510 CFM	12" DIA.	1451-1900 CFM	20" DIA.

- NOTES:**
- BASED ON WIRE HELIX FLEXIBLE DUCT. TYPE FLEX-MASTER
 - UL LISTINGS: U-181 / ETL CLASS 1 AIR DUCT
 - STANDARD CODE: NFPA 90A AND 90B, BOCA, SBBC HUD/FHA, MIN PROPERTY STD.
 - FLAME SPREAD.....LESS THAN 25
 - SMOKE DEVELOP.....LESS THAN 50
 - MIN R6.0 FOR ATTIC/CONDITION SPACE.
 - MIN R6.0 FOR RETURN CONDITIONED SPACE.
 - MANUFACTURER IS TO BE USED AS A BASIS FOR DESIGN. CONTACT ENGINEER OF RECORD TO SUBMIT ON APPROVED EQUALS.

LEGEND

A-12-400	TYPE - NECK SIZE - CFM	EF-1	EXHAUST FAN #1
⊙	REMOTE TEMPERATURE SENSOR	⊠	PULL STATION
⊕	HUMIDITY SENSOR	⊞	RETURN/EXHAUST
⊞	STROBE AUDIO/VISUAL ALARM ANNUNCIATOR	⊞	SUPPLY DIFFUSER (TYP.)
12x18	DUCT SIZE (REVERSE FOR ELEVATION VIEWS): 1ST NUMBER - HORIZONTAL DIMENSION 2ND NUMBER - VERTICAL DIMENSION	⊞	PLAN NOTE REFERENCE
⊞	AIR CONDITIONING UNIT #1 (TYP.)	⊞	CONTROL PANEL
↔	MANUAL VOLUME DAMPER	⊞	SMOKE DETECTOR

- HVAC GENERAL NOTES**
- DUCT SIZES SERVING DIFFUSERS AND GRILLES ARE SAME SIZE AS DIFFUSER OR GRILLE NECK UNLESS NOTED OTHERWISE.
 - MECHANICAL CONTRACTOR SHALL BALANCE HVAC SYSTEM AS SHOWN ON THE PLAN & RTU SCHEDULE. IF AIRFLOWS DIFFER BY MORE THAN 5%, CONTACT CFA CONSTRUCTION MANAGER.
 - NO PIPING OR DUCTWORK ALLOWED ABOVE ANY ELECTRICAL/CONTROL PANELS.
 - COORDINATE NEW WORK WITH CONDUITS, STRUCTURE, & PIPING.

SPLIT SYSTEM AIR CONDITIONING UNIT SCHEDULE

MARK	AREA SERVED	TONNAGE	COOLING CAPACITY (MBH)		FAN SECTION (CFM)				AIR HANDLING UNIT MODEL #	% OA	CONDENSING UNIT MODEL #	MANUFACTURER	SEER	ELECTRICAL DATA			REMARKS	APPROX. WEIGHT WITH OPTIONS (LBS)		
			TOTAL	SENS	KW	SUPPLY	O.A.	HP						ESP	V/PH/Hz	MCA		MCCP	AHU	CU
NEW AHU-1/UCU-1	BOH/OFFICE	3	34.6	27.0	15.0	1,200	228	.5	0.75	CBA38MV-036	19%	13ACXN036	LENNOX	14.0	208/1/60	74	80	1 THRU 4	159	151

NOTES:
 • COOLING CAPACITIES ARE GROSS, BASED ON ENTERING: 80FDB/67FWB, OUTDOOR: 95FDB, AND 400 CFM PER TON.
 • CHICK-FIL-A MAINTAINS A NATIONAL ACCOUNT FOR EQUIPMENT WITH LENNOX CORPORATION. CONTACT LENNOX NATIONAL ACCOUNTS AT 972-497-4219 (OR BY FAX AT 972-497-5112) FOR PRICING, ORDERING AND AVAILABILITY.
 • MECHANICAL CONTRACTOR TO VERIFY LENNOX SUBMITTAL WITH CONSTRUCTION DOCUMENTS.

REMARKS:
 1. PROVIDE 2" MERV 8 THROW AWAY FILTERS.
 2. PROVIDE FACTORY INSTALLED CONDENSATE PAN DRAIN OVERFLOW SWITCH.
 3. PROVIDE UNIT WITH MSAV BLOWER.
 4. PROVIDE FACTORY STAINLESS STEEL HEAT EXCHANGER.

CONTRACTOR SHALL VERIFY EXACT ELECTRICAL CONNECTIONS, WIRE SIZES, BREAKERS, DISCONNECT, ETC. PRIOR TO ORDERING AND BID.

CHICK-FIL-A
PHENIX CITY CFA
MODULAR ADDITION

FSR#01815

REVISION SCHEDULE

NO.	DATE	DESCRIPTION

CONSULTANT PROJECT # 29114

PRINTED FOR	Permit Submittal
DATE	06-18-20
DRAWN BY	S.J.M.

Information contained on this drawing and in all digital files produced for above named project may not be reproduced in any manner without express written or verbal consent from authorized project representatives.

SHEET
 MECHANICAL RENOVATION FLOOR PLAN

SHEET NUMBER
M101.MOD

Permit Submittal