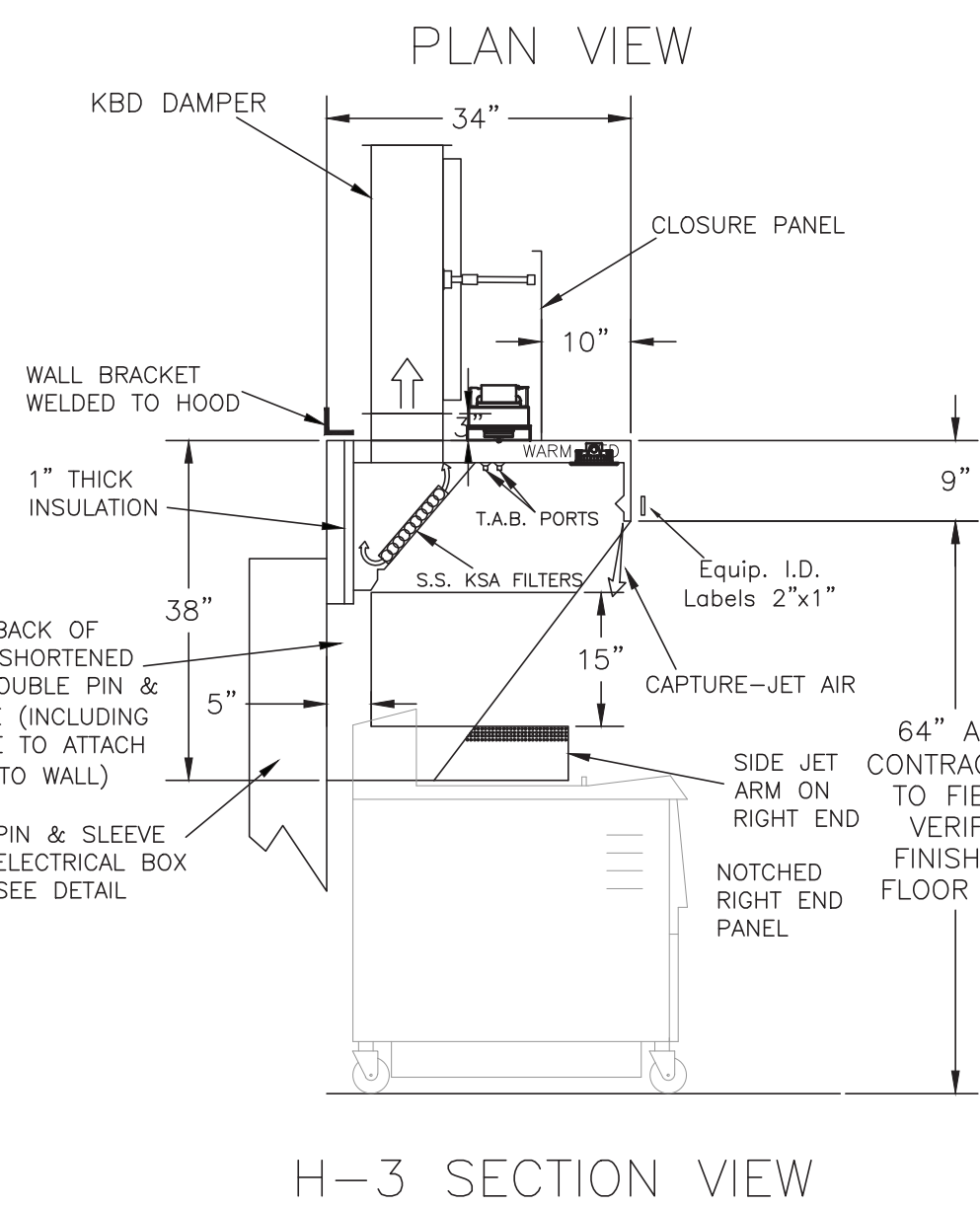
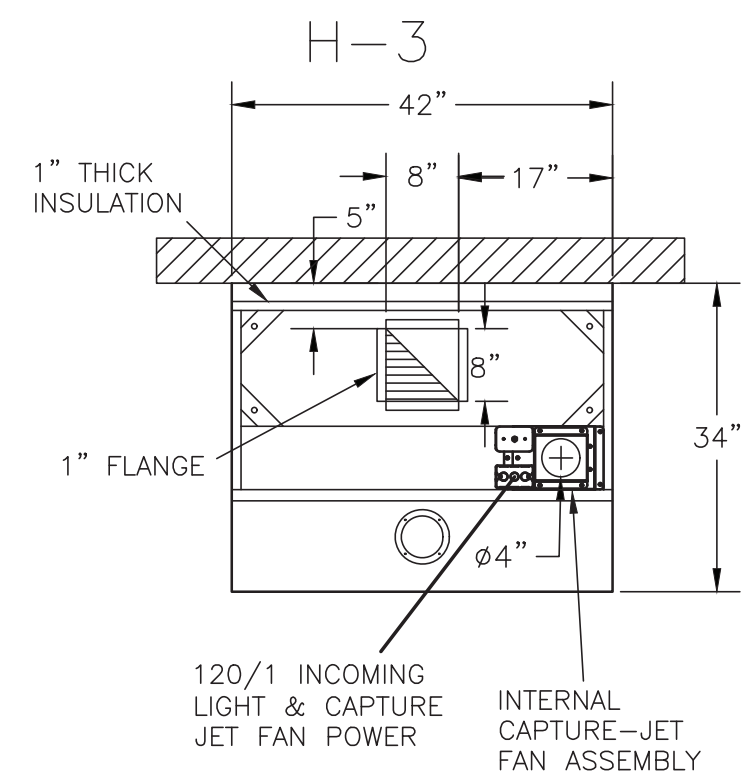
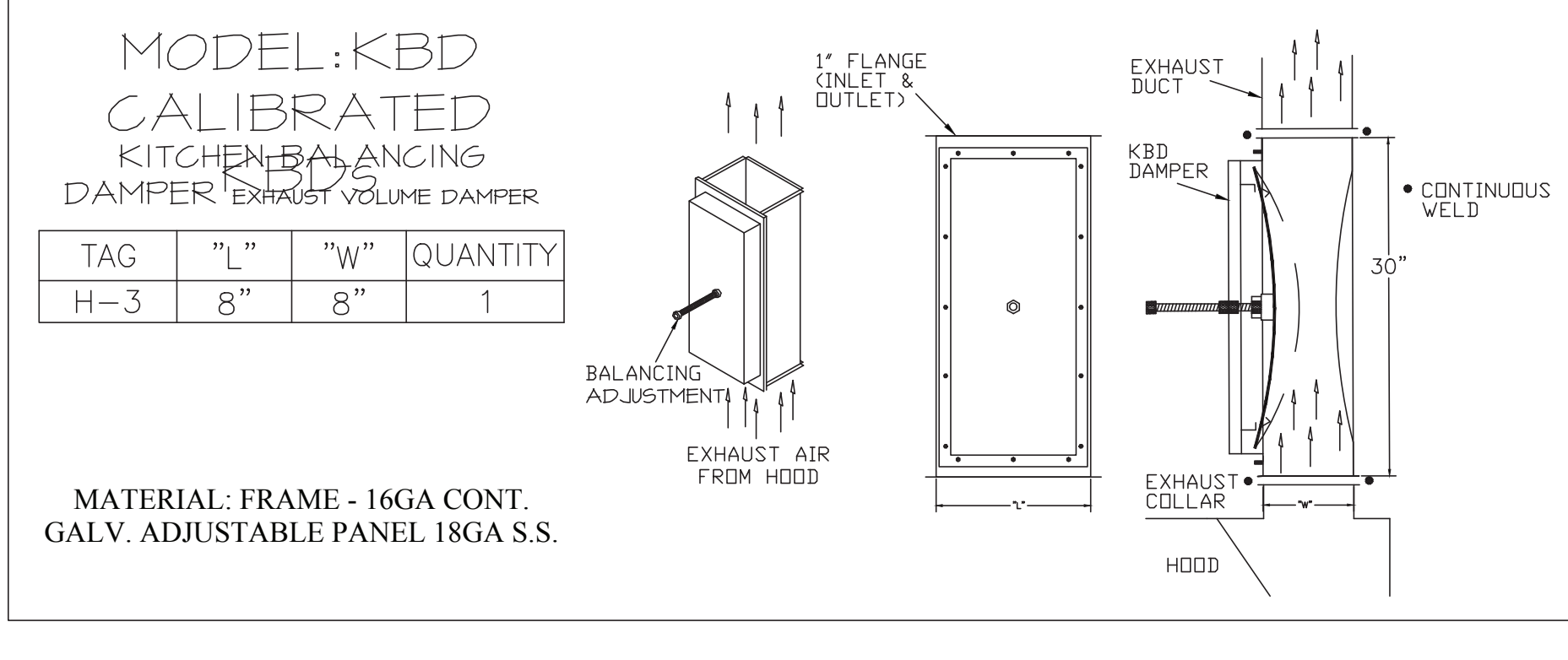
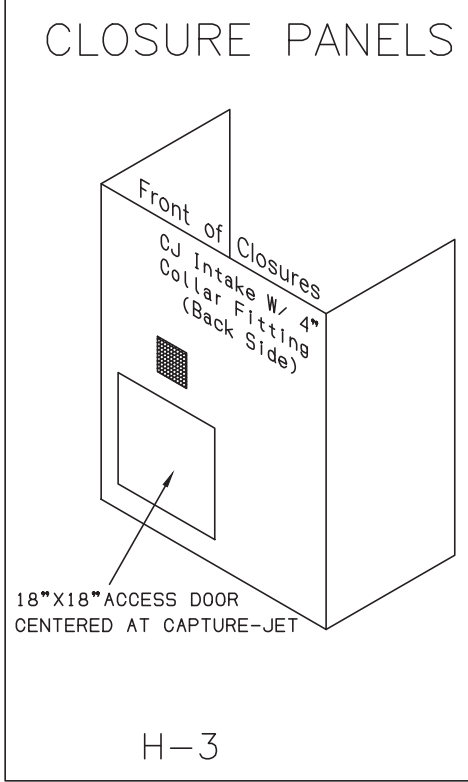


HOOD MODEL	HOOD NUMBER	QTY	EXHAUST COLLAR		EXHAUST AIR INFORMATION		CAPTURE AIR INFORMATION		S.S. KSA FILTERS		LED LIGHTS		CEILING CLOSURES				K FACTOR (CFM = K FACTOR * √DP)	MATERIAL	
			LENGTH	WIDTH	CFM	TAB	SP	CFM	SP	FULL	HALF	QTY	CLOSURE HEIGHT	CEILING HEIGHT	HOOD WEIGHT	KBD DAMPER			
KVL-C-IC	H-3	1	8"	8"	701	0.30"	0.39"	30	0.29"	2	-	1	3	TBD	ADVISE	245 LBS	*	1291	EXPOSED SURFACES 18 GA. S.S.

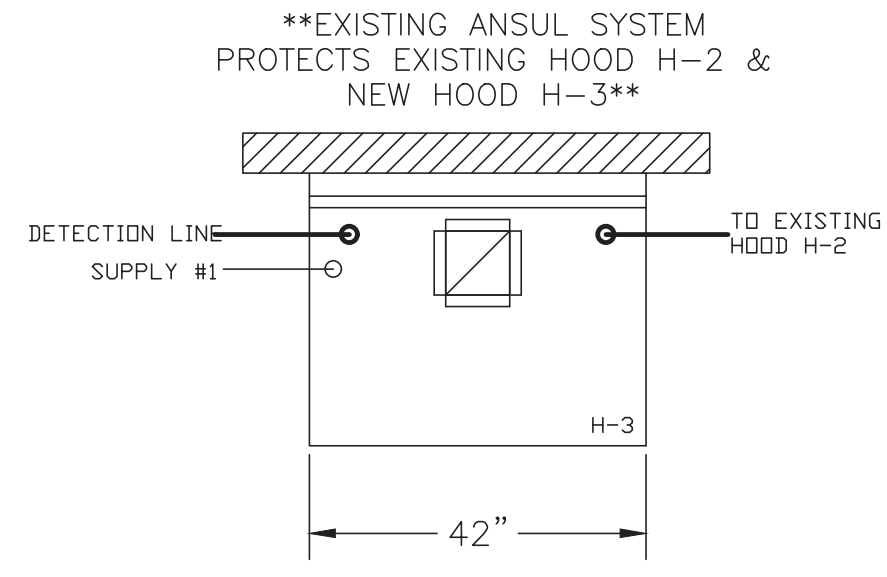
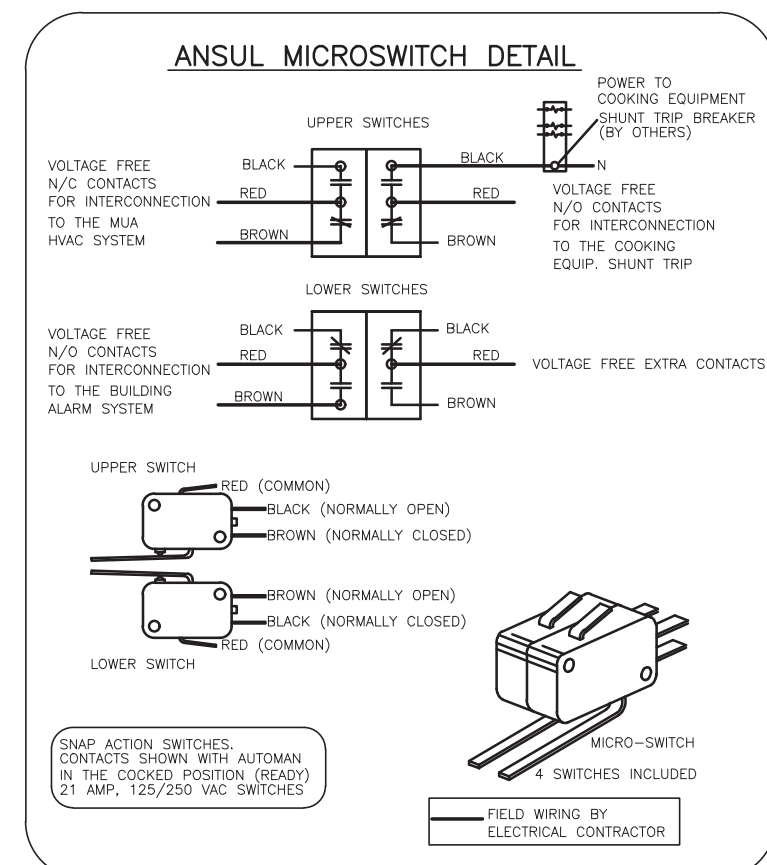


- CEILING CLOSURE RECESSED 10" FROM FRONT TO CREATE SHELF
- 18"x18" ACCESS DOOR CENTERED AT CAPTURE-JET WITH FRONT CJ INTAKE
- NOTCHED RIGHT END PANEL
- DOUBLE RECEPTACLE PIN & SLEEVE
- 3" REAR STAND-OFF TO HAVE 1" THICK INSULATION
- EQUIPMENT COVERED:
(2) FRYERS



TAG	"L"	"W"	QUANTITY
H-3	8"	8"	1

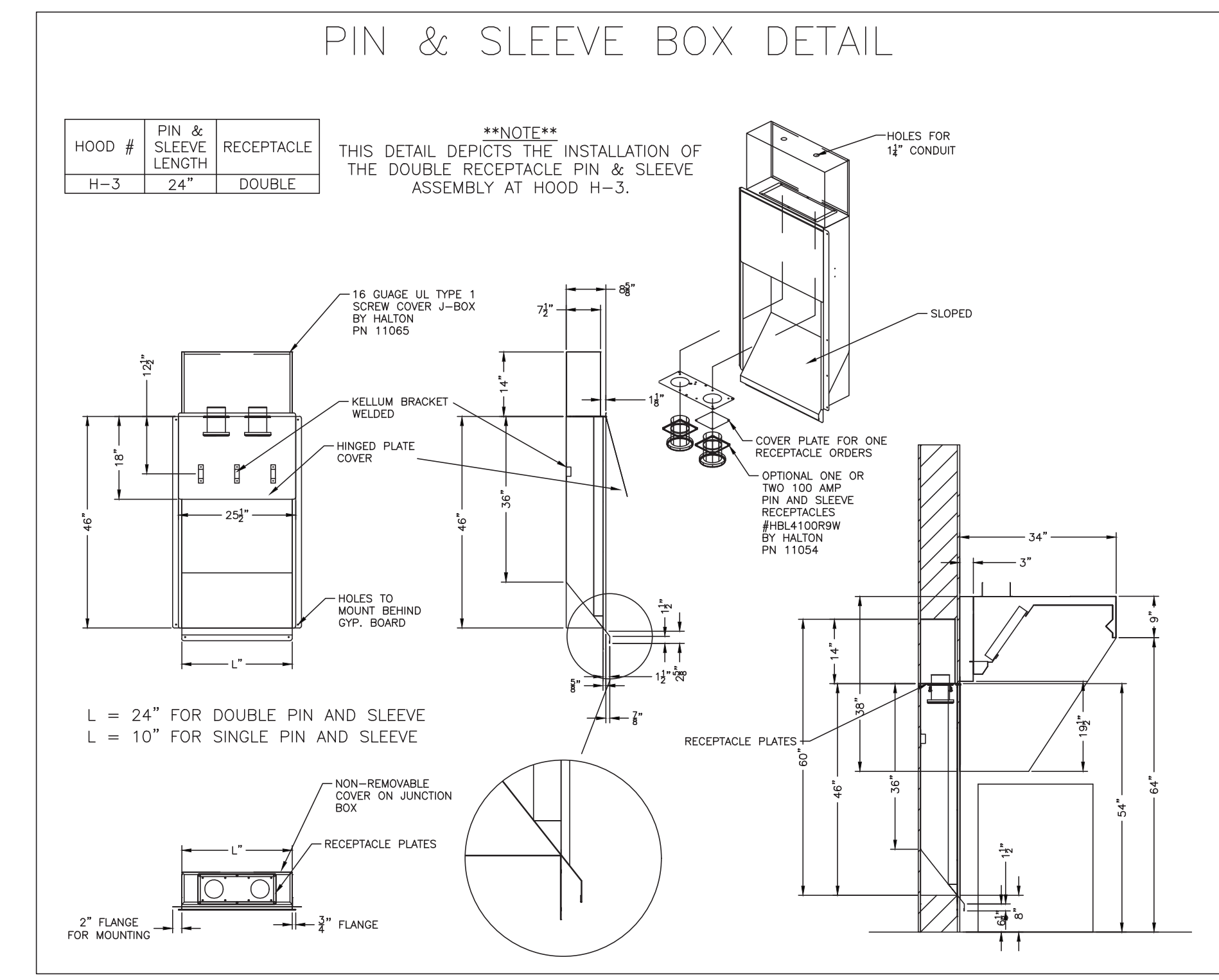
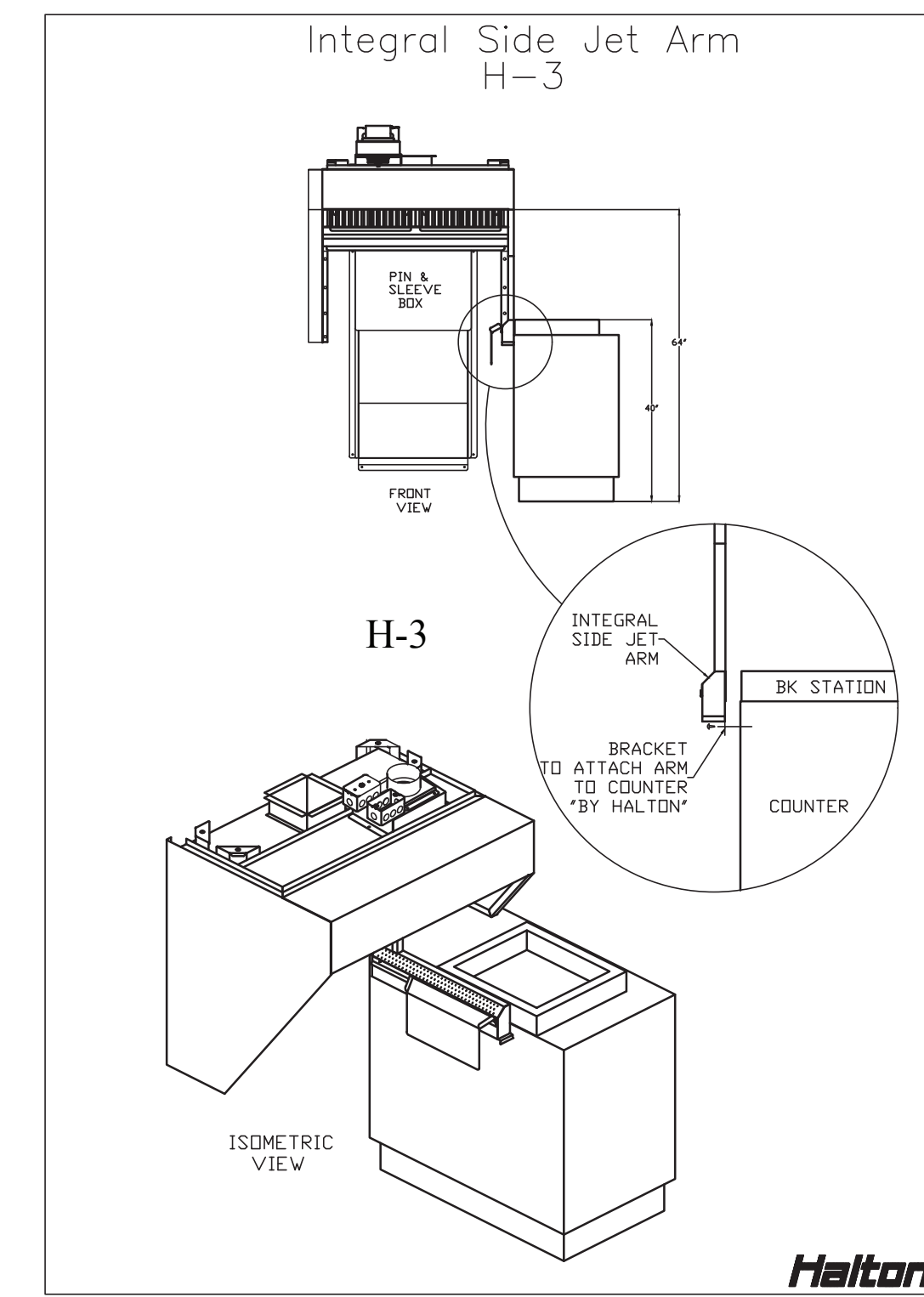
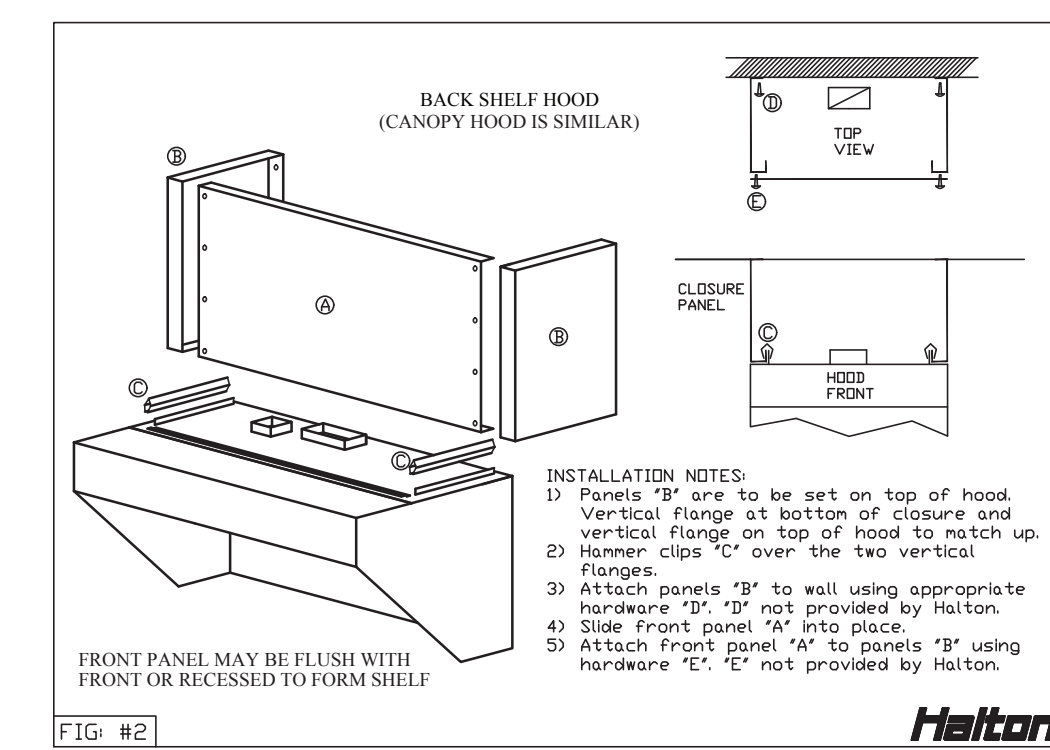
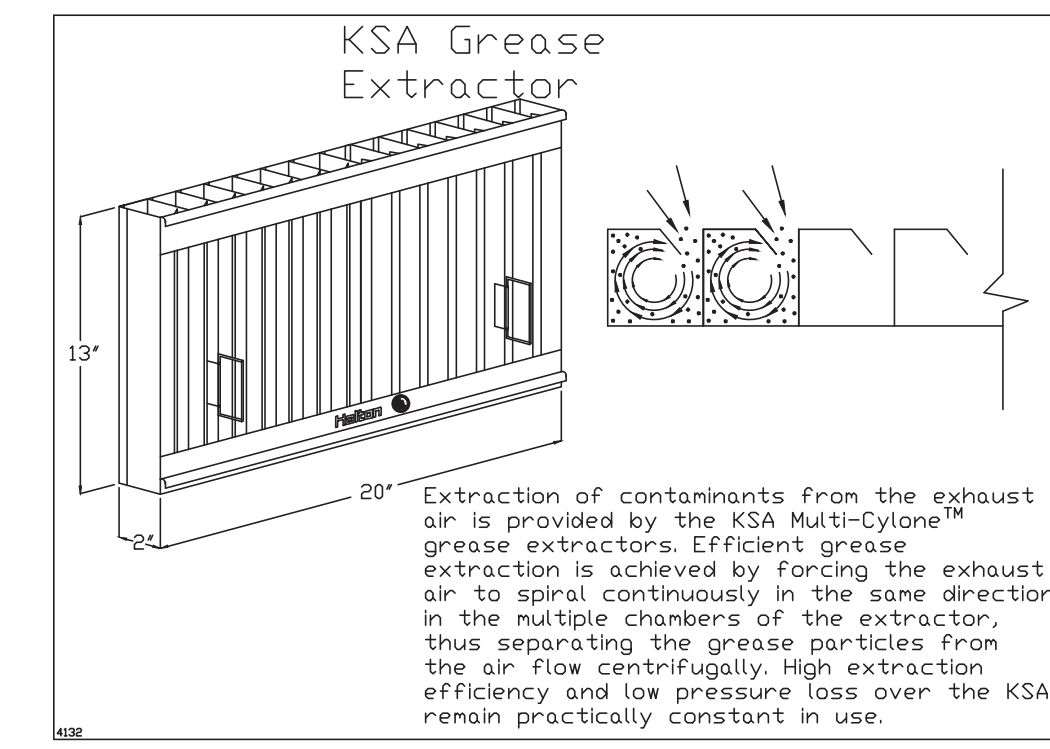
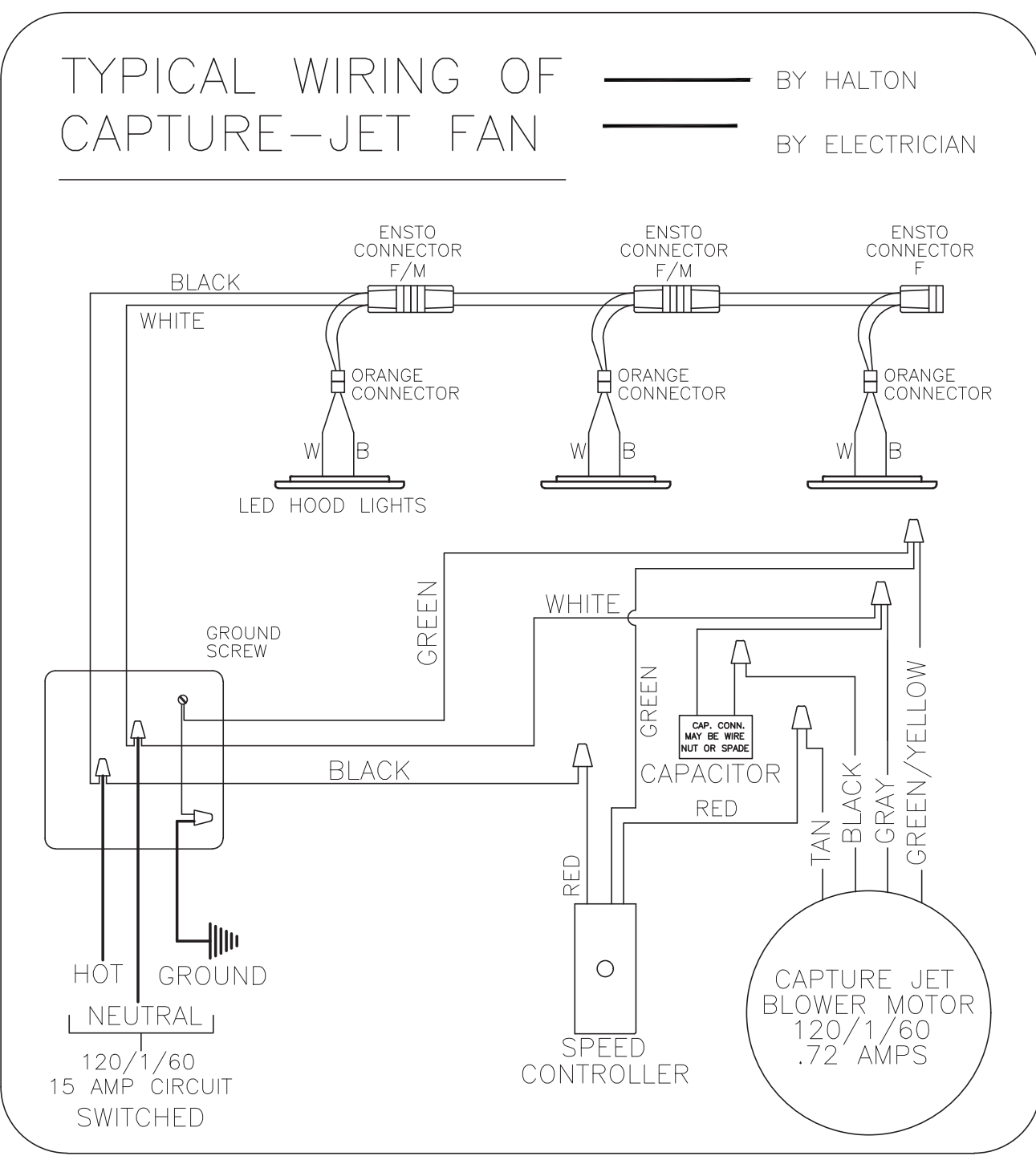
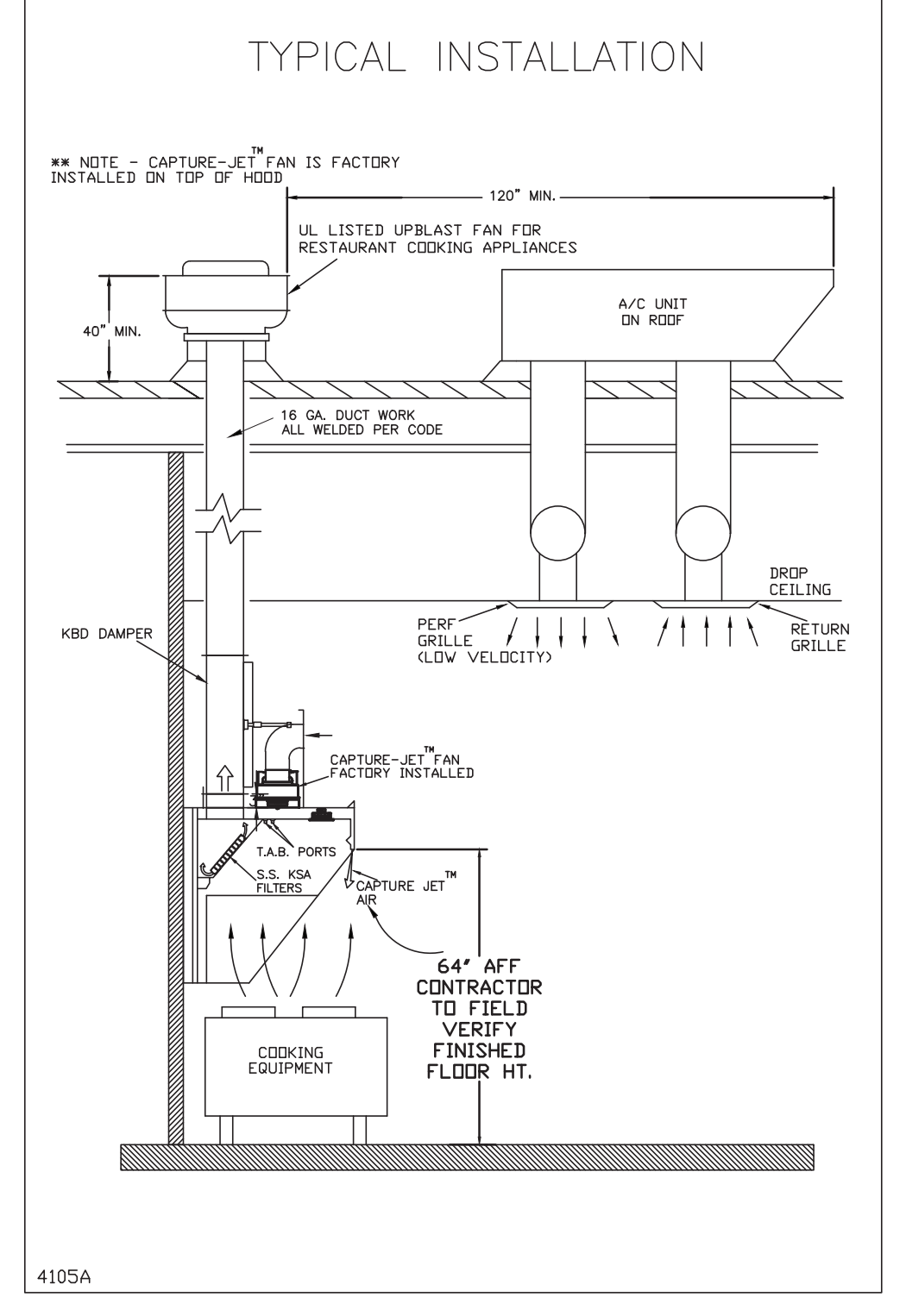
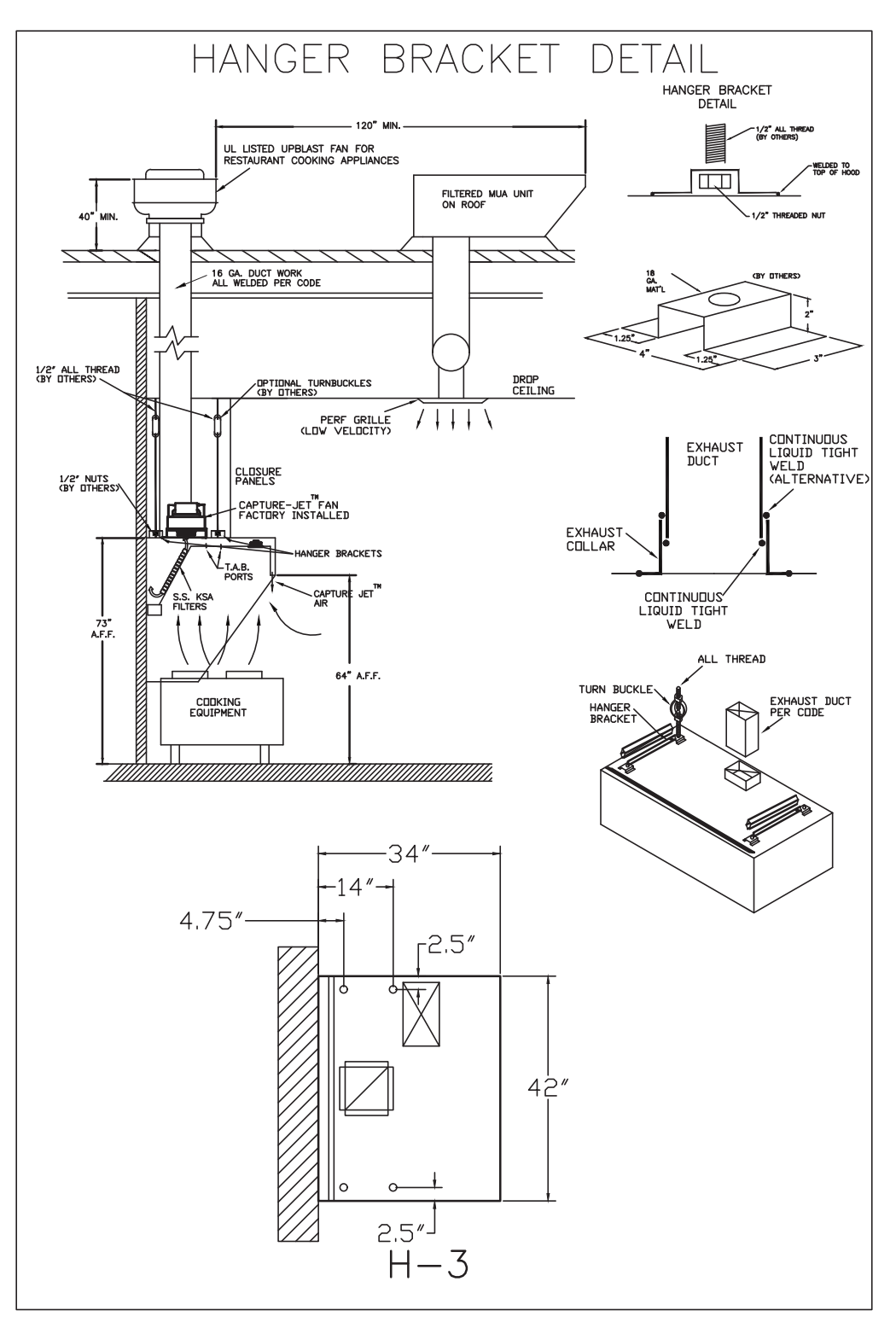
MATERIAL: FRAME - 16GA CONT.
GALV. ADJUSTABLE PANEL 18GA S.S.



ITEM	PART #	QTY	DESCRIPTION	FLOW PTS (TOTAL)
1W	10023	1	DUCT NOZZLES	1
1N	10022	1	PLENUM NOZZLES	1
3N	10021	2	APPLIANCE NOZZLES	6
			TOTAL FLOW POINTS	8

ITEM	QTY	DESCRIPTION
#200	10035	1 SERIES DETECTORS W/ FUSIBLE LINKS
#201	10040	2 REMOTE PULL STATION

ANSUL R-102 FIRE SYSTEM LAYOUT



THIS DRAWING MUST BE CHECKED, SIGNED AND RETURNED TO THE APPROPRIATE FACTORY. PLEASE VERIFY THE FOLLOWING:
1. ALL DIMENSIONAL INFORMATION, MOUNTING POSITIONS
2. THE LOCATION AND TYPE OF COOKING EQUIPMENT.
NOTE TO APPROVER
ANY CHANGES IN COOKING EQUIPMENT SUCH AS INCREASED ENERGY INPUTS OR EQUIPMENT CHANGES OCCURRING, A RECALCULATION EXHAUST AIRFLOW MAY BE REQUIRED.
 REVISE AND RESUBMIT
 APPROVED FOR FABRICATION
 WITH NO CHANGES AS NOTED
APPROVED BY: _____ DATE: _____



WEBSITE: www.halton.com
HALTON CO. (USA)
1001 BREWERY DRIVE
SCOTTSVILLE, KY 42664
1-270-237-5600
BY: _____ DATE: _____
REVISION DESCRIPTION
REV. 1: _____

MAIL APPROVED DRAWINGS TO APPROPRIATE FACTORY BELOW:
HALTON CO. (CANADA)
1001 BREWERY PLACE 3R7
MISSISSAUGA, ONTARIO L4X 1L3
1-905-624-0301
PROJECT: CHICK-FIL-A #1815
PHENIX CITY
LOCATION: PHENIX CITY, AL
DRAWN BY: SKK
DATE: 11.15.23
SCALE: NOT TO SCALE
DURING No.: U23-992-01
SHEET No.: H-1.1



Chick-fil-A
5200 Buffington Road
Atlanta, Georgia
30349-2998

INTERPLAN
INTERPLAN LLC
AR99238
CA 8660
ARCHITECTURE
ENGINEERING
PERMITTING
220 E. CENTRAL PKWY, STE 4000
ALTIMONTE SPRINGS, FL 32701
407.645.3038
SEAL:

FOR
INFORMATION
ONLY

CHICK-FIL-A
PHENIX CITY
3711 US HIGHWAY 280
PHENIX CITY, AL 36837

FSR#01815
BUILDING TYPE / SIZE: S03D-136
RELEASED
PRINTED FOR
CONSTRUCTION
REVISION SCHEDULE
NO. DATE DESCRIPTION
CONSULTANT PROJECT # 2023.0412
DATE DECEMBER 2023
DRAWN BY SE
CHECKED BY DAK
SHEET HOOD DETAILS
SHEET NUMBER
MH1.1