



KROGER
SW-520
 WITHIN THE WALLS
 REMODEL
 3120 UNIVERSITY DR.
 FT. WORTH, TX 76109
 A DEVELOPMENT OF
KROGER



Pickering
 Mechanical Engineering
 4770 Parkview Blvd, Suite 100
 Dallas, TX 75244
 972.788.1010

ISSUE LOG

NO.	DESCRIPTION	DATE
1	ADD	02/12/15
2	FOR CONSTRUCTION	03/25/15



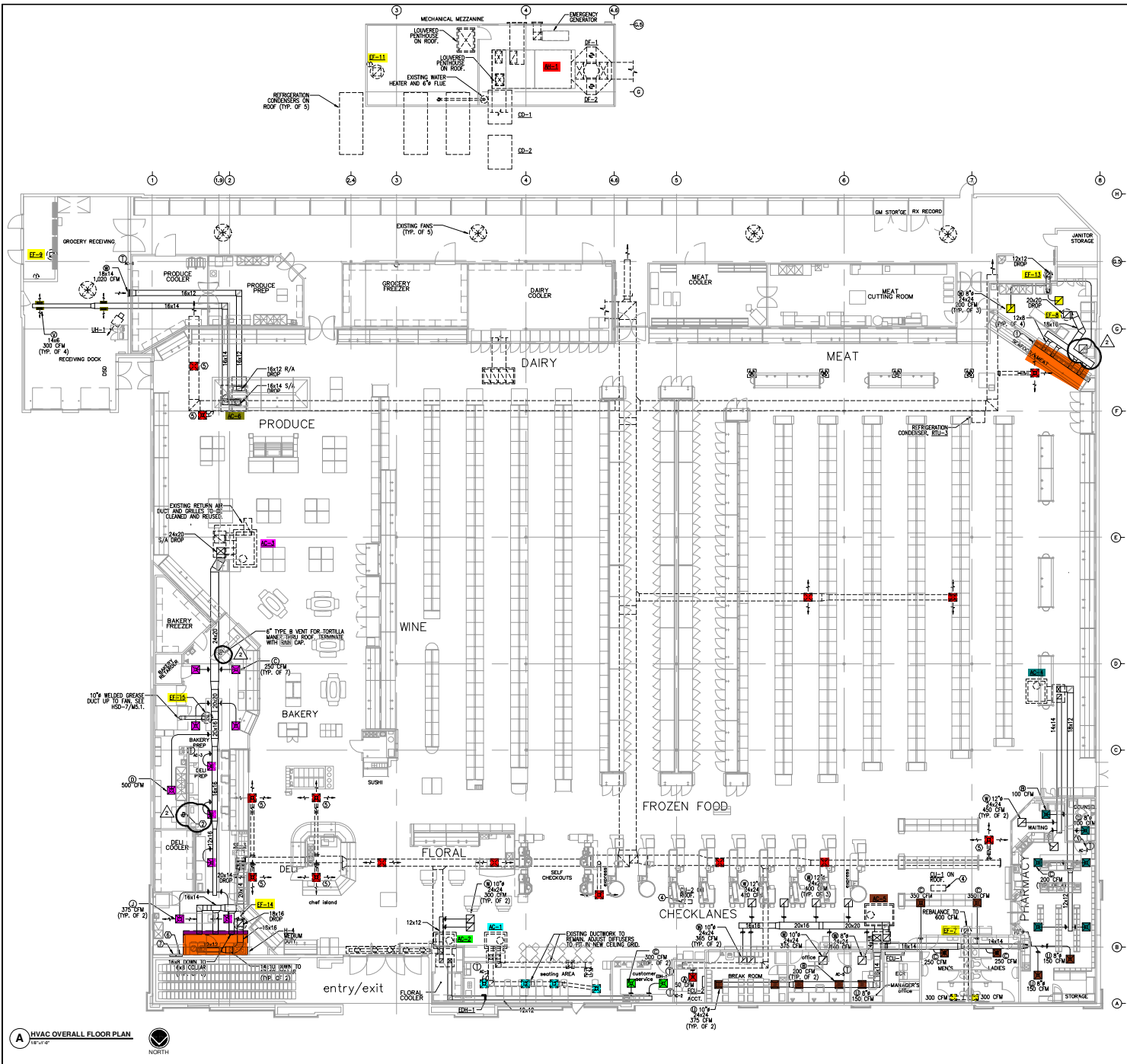
O'BRIEN
 5310 HARVEST HILL RD.
 SUITE 100
 DALLAS, TEXAS 75230
 972.788.1010
 www.obrienarch.com



Pickering Firm, Inc.
 F-0884
 MIKE BILDERBECK, PE
 REGISTRATION NO. 98837
 EXPIRES 12/31/15

SHEET NO.

M1.1
 HVAC OVERALL FLOOR PLAN



○ SHEET KEYNOTES

1. 16" LONG EXHAUST GRILLE IN CEILING. GRILLE SHALL BE EQUAL TO: TILES 300 RL, 200, OR CT SERIES. NO STAMPED GRILLES OR GRILLES WIDER THAN 10". PROVIDE PLENUM ABOVE GRILLES. 1.650 CFM AIRFLOW. CONNECT TOP OF DUCT DUCT TO 10" PLENUM.
2. INSTALL UR-50 VENT KIT PROVIDED BY HOBAS. VENT KIT AUTOMATICALLY REMOVES STEAM/CONDENSATE AT THE COMPLETION OF THE WASH CYCLE. SEE HSB-5/ACS.1.
3. TEMPERATURE SENSOR WITH SLIDE BAR ADJUST OVERDRIVE TO PERMIT ADJUSTMENT FOR INSIDE PHARMACY.
4. PROVIDE AND INSTALL HANG REFRIGERATION PIPING PER MANUFACTURER'S RECOMMENDATIONS. ADJUST OFFSETS TO FIT IN NEW CEILING GRILL ANGLE. FULL STATION. CONICAL TUBING AND BOX IN WALL.
5. HOOD FAN STARTER PANEL.

GENERAL HVAC NOTES

1. PROVIDE BALANCING DAMPERS AT POINTS ON SUPPLY, RETURN, AND EXHAUST SYSTEMS WHERE BRANCHES LEAD FROM LARGE DUCTS AS REQUIRED FOR AIR BALANCING. INSTALL AT A MINIMUM OF TWO DUCT WIDTHS FROM BRANCH TAKEOFF.
2. SEE AIR DISTRIBUTION SCHEDULE FOR DUCT RUNOUT SIZES TO SUPPLY DEVICES.
3. CONTRIBUTOR TO COORDINATE LOCATION OF EXHAUST HOOD PIPING, TYP.
4. PROVIDE TURNING VANES IN SQUARE ELBOWS. SEE DETAIL 4/M3.1.

A HVAC OVERALL FLOOR PLAN

