

PlanGrid Task Report - Feb 17, 2026

Prepared by Stephen Tassinaro

Feb 17, 2026

Description

11 tasks in this report.

Contents

#247 [SITE 010] [NEW] CRITICAL – Return nvisit required.	2
#245 [SITE 006] [NEW] CRITICAL – Drive-thru door.....	3
#243 [EXHA 499] [NEW] CRITICAL - EF-1 Low Flow.....	5
#242 [EXHA 499] [NEW] CRITICAL (MISC) – EF-3 Leakage	7
#241 [UNIT 499] [NEW] CRITICAL (MISC) – RTU-3 Pulley Change	9
#240 [DUCT 006] [NEW] CRITICAL – Flex duct installation.....	11
#239 [DUCT 007] [NEW] CRITICAL – Diffuser rigid 90's. SGRD3-3	14
#238 [CNTL 499] [NEW] CRITICAL (MISC) – Hoods not turning OFF	15
#236 [EXHA 500] [NEW] Restroom rectangular duct riser.....	17
#232 [REFG 508] [NEW] WIC/WIF panel penetrations.....	20
#229 [EXHA 999] [NEW] (MISC) Exhaust duct construction.....	22

#247 [SITE 010] [NEW] CRITICAL – Return nvisit required.

Status
Pending

Start Date
Dec 23, 2025

Type
Planned Work

Created
Dec 23, 2025 6:43 PM
stephent@nationaltab.com

List
TAB Punch List

Last Updated
Feb 17, 2026 9:25 AM

Description

Due to the CRITICAL tasks,
a return TAB visit is required.
Once all Tasks are
completed and correction
photos imported to PG,
reach out to the TAB
Supervisor for confirmation
and scheduling the revisit.
Contact the TAB Supervisor
if a TAB report is needed for
CO or for further diagnostics.

#245 [SITE 006] [NEW] CRITICAL – Drive-thru door.

Status
Pending

Start Date
Dec 23, 2025

Type
Planned Work

Created
Dec 23, 2025 6:42 PM
stephent@nationaltab.com

List
TAB Punch List

Last Updated
Jan 9, 2026 3:38 PM

Description
Drive-thru door installation incomplete or perimeter of door not sealed properly, unable to obtain accurate building pressure.

Comments

drive-thru door installed

Jeff Golden Jan 9, 2026

NTi to verify building pressure and door function during return trip.

Stephen Tassinaro Feb 17, 2026

Photos

L05597_Avalon Park FSU

14266 East Colonial Drive, Orlando, Florida

L1020005597



246

Jeff Golden

Jan 9, 2026 3:37 PM



IMG_9106

Stephen Tassinaro

Dec 23, 2025 6:51 PM

#243 [EXHA 499] [NEW] CRITICAL - EF-1 Low Flow

Status

Open

Start Date

Dec 23, 2025

Type

Planned Work

Created

Dec 23, 2025 6:42 PM
stephent@nationaltab.com

List

TAB Punch List

Last Updated

Feb 17, 2026 2:15 PM

Description

EF-1 fan speed was reduced from the factory setpoint due to overramping. The maximum airflow that could be achieved without overramping is 87% of design.

Comments

Halton

Jeff Golden Jan 8, 2026

Reverting to Open task. Last correspondence was that Halton is to ship a new motor to the site and install. NTi will need to rebalance EF and Hood once complete.

Stephen Tassinaro Feb 17, 2026

Photos

L05597_Avalon Park FSU

14266 East Colonial Drive, Orlando, Florida

L1020005597



IMG_9159

Stephen Tassinaro

Dec 23, 2025 6:52 PM

#242 [EXHA 499] [NEW] CRITICAL (MISC) – EF-3 Leakage

Status
Pending

Start Date
Dec 23, 2025

Type
Planned Work

Created
Dec 23, 2025 6:42 PM
stephent@nationaltab.com

List
TAB Punch List

Last Updated
Jan 8, 2026 9:40 AM

Description
EF-3 is leaking at the
connection to the curb/fan.

Comments

exhaust duct is now changed (per plan) to all round below the BDD and does not get liner, only outside insulation.

Jeff Golden Jan 8, 2026

NTi to rebalance during return trip

Stephen Tassinaro Feb 17, 2026

Photos

L05597_Avalon Park FSU

14266 East Colonial Drive, Orlando, Florida

L1020005597



1
Jeff Golden
Jan 8, 2026 9:39 AM



IMG_9136
Stephen Tassinaro
Dec 23, 2025 6:52 PM

L05597_Avalon Park FSU

14266 East Colonial Drive, Orlando, Florida

L1020005597



IMG_9137

Stephen Tassinaro

Dec 23, 2025 6:52 PM

#241 [UNIT 499] [NEW] CRITICAL (MISC) – RTU-3 Pulley Change

Status

Pending

Start Date

Dec 23, 2025

Type

Planned Work

Created

Dec 23, 2025 6:42 PM
stephent@nationaltab.com

List

TAB Punch List

Last Updated

Feb 17, 2026 9:24 AM

Description

RTU-3 will require a pulley change to run at design airflow. The VFD has TEMPORARILY been set to

L05597_Avalon Park FSU

14266 East Colonial Drive, Orlando, Florida

L1020005597

54HZ so that balance could continue and the store can pass inspections.

Comments

must be done by Lennox

Jeff Golden Jan 8, 2026

#240 [DUCT 006] [NEW] CRITICAL – Flex duct installation.

Status
Pending

Start Date
Dec 23, 2025

Type
Planned Work

Created
Dec 23, 2025 6:42 PM
stephent@nationaltab.com

List
TAB Punch List

Last Updated
Jan 8, 2026 9:53 AM

Description
SGRD4-4 has more than 4ft of flex, which is causing some sag. Airflow to this diffuser is also 75% of design, additionally a scoop may need to be added to reach design flow.

Comments

Rigid pipe added for SGRD4-4, flex no more than 4ft, metal brace pinching flex re-located, strapping added to support flex

Jeff Golden Jan 8, 2026

NTi to inspect and rebalance unit during return trip.

Stephen Tassinaro Feb 17, 2026

Photos

L05597_Avalon Park FSU

14266 East Colonial Drive, Orlando, Florida

L1020005597



3

Jeff Golden

Jan 8, 2026 9:53 AM



4

Jeff Golden

Jan 8, 2026 9:53 AM

L05597_Avalon Park FSU

14266 East Colonial Drive, Orlando, Florida

L1020005597



IMG_9164

Stephen Tassinaro

Dec 23, 2025 6:53 PM

#239 [DUCT 007] [NEW] CRITICAL – Diffuser rigid 90's. SGRD3-3

Status
Pending

Start Date
Dec 23, 2025

Type
Planned Work

Created
Dec 23, 2025 6:42 PM
stephent@nationaltab.com

List
TAB Punch List

Last Updated
Jan 8, 2026 9:51 AM

Description

Rigid 90 degree fitting not installed for SGRD3-4. Airflow to this diffuser is also 66% of design, additionally a scoop may need to be added to reach design flow.

Comments

Diffuser SGRD3-4. Duct riser with rigid 90 installed

Jeff Golden Jan 8, 2026

NTi to rebalance during return trip.

Stephen Tassinaro Feb 17, 2026

Photos

L05597_Avalon Park FSU

14266 East Colonial Drive, Orlando, Florida

L1020005597



IMG_9163

Stephen Tassinaro

Dec 23, 2025 6:53 PM

5

Jeff Golden

Jan 8, 2026 9:49 AM

#238 [CNTL 499] [NEW] CRITICAL (MISC) – Hoods not turning OFF

Status

Open

Start Date

Dec 23, 2025

Type

Planned Work

Created

Dec 23, 2025 6:42 PM
stephent@nationaltab.com

List

TAB Punch List

Last Updated

Feb 17, 2026 2:17 PM

Description

Kitchen hoods did not turn OFF when building was put into UNOCC mode.

L05597_Avalon Park FSU

14266 East Colonial Drive, Orlando, Florida

L1020005597

Comments

Task re-opened. No documentation showing this has been resolved.

Stephen Tassinaro Feb 17, 2026

#236 [EXHA 500] [NEW] Restroom rectangular duct riser.

Status
Pending

Start Date
Dec 23, 2025

Type
Planned Work

Created
Dec 23, 2025 6:42 PM
stephent@nationaltab.com

List
TAB Punch List

Last Updated
Jan 8, 2026 11:09 AM

Description
Restroom exhaust rectangular duct riser not correctly lined per specification. Instead duct is wrapped externally. Recommend installing liner or discussing with EOR to leave as-is.

Comments

EF-3 duct leak corrected

Jeff Golden Jan 8, 2026

Per Task 242 this duct was reworked. NTi will inspect during return trip.

Stephen Tassinaro Feb 17, 2026

Photos

L05597_Avalon Park FSU

14266 East Colonial Drive, Orlando, Florida

L1020005597



1

Jeff Golden

Jan 8, 2026 11:08 AM



IMG_9137

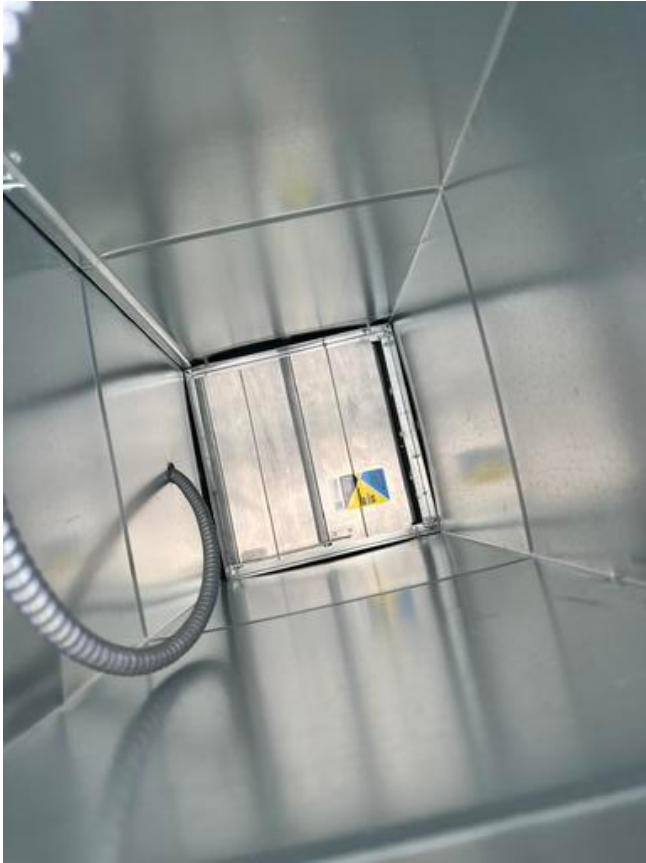
Stephen Tassinaro

Dec 23, 2025 6:54 PM

L05597_Avalon Park FSU

14266 East Colonial Drive, Orlando, Florida

L1020005597



IMG_9138

Stephen Tassinaro

Dec 23, 2025 6:54 PM

#232 [REFG 508] [NEW] WIC/WIF panel penetrations.

Status
Open

Start Date
Dec 23, 2025

Sheet
E-501

Type
Planned Work

Created
Dec 23, 2025 6:42 PM
stephent@nationaltab.com

List
TAB Punch List

Last Updated
Feb 17, 2026 2:25 PM

Description

WIF/WIC penetrations are not sealed inside with silicone and above ceiling panel with 2 layers of 1/4" foam tape 12" above panel at time of inspection.

Comments

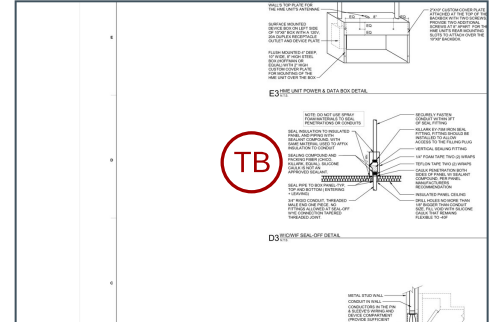
sealed

Jeff Golden Jan 9, 2026

Task re-opened. Not sealed per E-501.

Stephen Tassinaro Feb 17, 2026

Photos



L05597_Avalon Park FSU

14266 East Colonial Drive, Orlando, Florida

L1020005597



245-2

Jeff Golden

Jan 9, 2026 3:36 PM



245-1

Jeff Golden

Jan 9, 2026 3:36 PM



IMG_9142

Stephen Tassinaro

Dec 23, 2025 6:54 PM



IMG_9141

Stephen Tassinaro

Dec 23, 2025 6:54 PM

#229 [EXHA 999] [NEW] (MISC) Exhaust duct construction.

Status
Pending

Start Date
Nov 6, 2025

Type
Planned Work

Created
Nov 6, 2025 5:24 PM
markj@nationaltab.com

List
TAB Punch List

Last Updated
Jan 8, 2026 11:10 AM

Description

Below-ceiling grease duct was constructed with extra turns to align the duct with roof risers. Static pressure will be tested during TAB to ensure it is not causing restriction.

Comments

Will verify pressures remain acceptable when new motor is installed.

Stephen Tassinaro Feb 17, 2026

Photos

L05597_Avalon Park FSU

14266 East Colonial Drive, Orlando, Florida

L1020005597



IMG_6345

Mark Johnson

Nov 6, 2025 5:28 PM



IMG_6344

Mark Johnson

Nov 6, 2025 5:28 PM