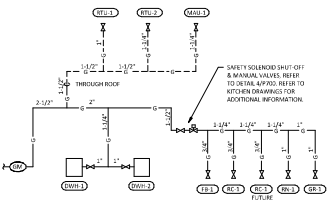
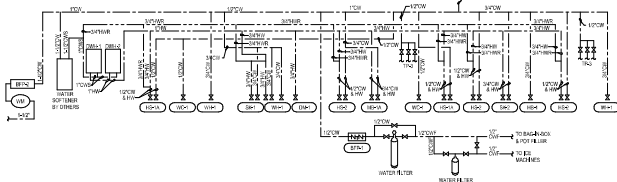


CONNECTED GAS LOAD			
FIXTURE	TAG	MBH	EQUIVALENT LENGTH FROM METER [FT]
WATER HEATER	WH-1	125	50
WATER HEATER	WH-2	125	50
STOVE	CS-1	25	25
GRIDDLE	CS-2	127	95
MANIFOLD UNIT	MS-1	225	100
RICE COOKER	RC-1	15	50
RICE COOKER FILTERS	RC-1	15	50
KITCHEN ROOFTOP UNIT	RTU-1	180	50
DRIVING ROOM ROOFTOP UNIT	RTU-2	280	65
CONDENSATE	150P		MAX 100

NOTES:
 1. PRESSURE REQUIRED AT METER IS 2" W.C.
 2. DISTANCES ARE APPROXIMATE



GAS DISTRIBUTION DIAGRAM
 NOT TO SCALE



PLUMBING SUPPLY DIAGRAM
 NOT TO SCALE

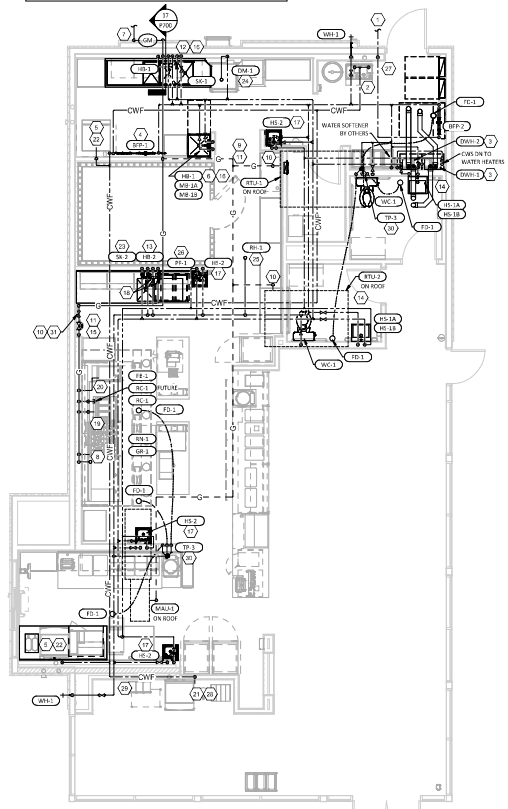
PLUMBING SUPPLY PLAN NOTES

- SEE CIVIL UTILITY PLAN FOR CONTRACTOR OF 1/2" DOMESTIC WATER SERVICE.
- PROVIDE 1/2" FILTERED WATER TO THE 60 GAL. 300A CARBONATOR AT 12" AFT. 300A CARBONATOR SHALL HAVE AN IN-TANK 300A 100% CARBONATED BEVERAGE 300A CARBONATOR.
- PROVIDE WATER HEATERS OWN & MAINT 2" PER DETAIL 150P00.
- PROVIDE WATER FILTERS MOUNTED TO WALL PER DETAIL 150P00. PROVIDE 1/2" SUPPLY PIPES FROM FILTERS TO ICE MAKER AND 300A CARBONATOR AS SHOWN.
- PROVIDE 1/2" FILTERED WATER ROUGH-IN TO THE 42" MAX. 1/2" 50" AFT. PROVIDE 1/2" LONG STAINLESS STEEL FLEXIBLE BRACKET PROVIDING MACHINE WATER CONNECTION WITH MINIMUM 1/4" DISCREPANCY TO 1/2" DOWN FOR EQUI FOR FINAL CONNECTION TO ICE MAKER.
- PROVIDE DOMESTIC WATER ROUGH-IN FOR THE SINK BASIN FAUCET AT 36" AFT. PROVIDE DOMESTIC WATER ROUGH-IN FOR THE CHEMICAL DISPENSER FAUCET (HS-1) AT 48" DIRECTLY ABOVE THE ROOF BASIN FAUCET. SEE ARCHITECTURAL ELEVATION FOR ADDITIONAL INFORMATION.
- PROVIDE NEW GAS METER. SEE CIVIL UTILITY PLAN FOR ON-SITE GAS ROUTING.
- PROVIDE GAS CONNECTIONS TO THE COOKING EQUIPMENT PER DETAIL 150P00.
- SUPPORT THE GAS PIPE ON THE ROOF PER DETAIL 150P00. WOOD BLOCKING IS NOT AN ACCEPTABLE METHOD OF SUPPORTING THE GAS PIPE.
- PROVIDE ACCESSIBLE LINE-KITZ GAS VALVE, SHUT-OFF, AND SHOCK-AT-GAS CONNECTION TO THE EQUIPMENT.
- REFER TO ARCHITECTURAL DRAWINGS FOR FINISHES OF INTERIOR AND EXTERIOR EXPOSED GAS PIPE.
- PROVIDE DOMESTIC WATER ROUGH-IN FOR THE CHEMICAL DISPENSER FAUCET (HS-1) AT 51" AFT. SEE ARCHITECTURAL ELEVATION FOR ADDITIONAL INFORMATION.
- PROVIDE DOMESTIC WATER ROUGH-IN FOR THE VECTORY WASH DISPENSER FAUCET (HS-2) AT 22" AFT. SEE ARCHITECTURAL ELEVATION FOR ADDITIONAL INFORMATION.
- PROVIDE ROUGH-IN TO REST ROOM HAND SINKS AS SHOWN IN DETAIL 140P00.
- PROVIDE KITCHEN EQUIPMENT GAS SHUT-OFF 1" BELOW THE CEILING PER DETAIL 140P00.
- CONNECT CHEMICAL DISPENSER TO HB-1. CHEMICAL DISPENSER HAS AN INTEGRAL AIR GAP AS IS SHOWN IN DETAIL 100P00.
- PROVIDE 3/8" 1/2" POINT-OF-USE THERMOSTATIC MIXING VALVE (TMMV) PLUGS ON WATER SUPPLY TO KITCHEN HAND SINKS. PROVIDE ANGLE STOP BE ON SINK. FASTEN MIXING VALVE TO WALL AND MAKE FINAL CONNECTION FROM ANGLE STOP TO MIXING VALVE AND FROM MIXING VALVE TO SINKS USING BRASS 1/2" SWEET STEEL. ADJUST MIXING VALVE FOR A DISCHARGE TEMPERATURE OF APPROXIMATELY 120°F.
- PROVIDE ACCESSIBLE VALVE BY WATER SUPPLY TO FUTURE GAS SINKS.
- PROVIDE GAS CONNECTION TO THE RICE COOKER PER DETAIL 150P00. ADD EXTRA GAS STRAP FOR FUTURE RICE COOKER CONNECTION.
- PROVIDE GAS ROUGH-IN TO FREE BIRD RICE COOKER TAILS SO THAT VALVES AND SHUT-OFFS ARE ACCESSIBLE ONCE PIPER IS SECURED IN-TO PLACE.
- PROVIDE 1/2" FILTERED WATER ROUGH-IN TO THE 42" MAX. 1/2" 50" AFT. PROVIDE 1/2" LONG STAINLESS STEEL FLEXIBLE BRACKET PROVIDING MACHINE WATER CONNECTION WITH MINIMUM 1/4" DISCREPANCY TO 1/2" DOWN FOR EQUI FOR FINAL CONNECTION TO ICE MAKER.
- INSTALL NEW INSULATED ICE MAKER SINK (IEM) PERMITTED BY TUV FOR CHIPOTLE'S INSTALLATION INSTRUCTIONS.
- PROVIDE 3/4" DOMESTIC HOT AND COLD WATER ROUGH-INS FOR THE PREP SINK (SR-2) FAUCET AT 24" AFT. TO ALLOW FOR THE SINK TO BE DEMOUNTED TO BE RE-INSTALLED DIRECTLY BELOW THE PREP SINK BASIN.
- PROVIDE 3/4" HOT WATER TO THE DISH MACHINE, MAKING FINAL CONNECTION USING 3/4" COPPER PIPE ONCE DISH MACHINE IS IN ITS FINAL LOCATION (FINAL CONNECTION IS NOT ACCEPTABLE). PROVIDE WATER MAINFOLD AFTER SINK ON HOT WATER LINE. PROVIDE AN ACCESSIBLE SHUT-OFF VALVE AND PRESSURE RELIEF TO DISH MACHINE AND INSTALL THE SHUT-OFF AND PRESSURE RELIEF VALVE FURNISHED WITH THE DISH MACHINE IN AN ACCESSIBLE LOCATION AT THE CONNECTION TO THE LINE.
- PROVIDE ROOF HOOKUP HS-1 WITH BOTTOM OF ACCESSIBLE INSTALLED 1/2" ABOVE THE BOTTOM OF ROOF DECK. PROVIDE ACCESSIBLE SOLUTION VALVE IN WATER SUPPLY TO ROOF HYDRANT. SUPPORT ROOF HYDRANT PER THE MANUFACTURER'S INSTALLATION INSTRUCTIONS.
- PROVIDE FILTERED DOMESTIC WATER ROUGH-IN FOR THE SPEED FILL HOT FILLER FAUCET (HF-1) AT 48" AFT. SEE ARCHITECTURAL ELEVATION FOR DETAIL.
- PROVIDE WATER SERVICE ENTRY PER DETAIL 140P00.
- INSTALL NEW WATER SINK SPLITTER FURNISHED BY TUV FOR CHIPOTLE'S INSTALLATION INSTRUCTIONS. LOCATE MAIN BLOW-THROUGH COUPLER IN A LOCATION THAT DOES NOT INTERFERE WITH THE FLOOR BACK BEHIND THE UTILITY COUNTER.
- IF PENETRATIONS THROUGH SHEAR WALL SHALL BE LIMITED TO 3/8" DIAMETER FOR A GROUP OF PENETRATIONS ALL CONTAINED WITHIN 10' DIAMETER, IF LARGER PENETRATIONS OR GROUPS OF PENETRATIONS ARE REQUIRED COORDINATE WITH STRUCTURAL ENGINEER FOR APPROPRIATE BRACING. SEE STRUCTURAL DRAWINGS FOR SHEAR WALL LOCATION.
- PROVIDE ACCESSIBLE TRAP PRIMER ABOVE LAY IN CEILING AS SHOWN. INSTALL PER MANUFACTURER'S INSTALLATION INSTRUCTIONS WITH A SERVICE VALVE AT THE TRAP PRIMER LIFT. PROVIDE SET DISTRIBUTION PIPES TO GROSS-DRAIN TRAP PRIMER CONNECTIONS AS SHOWN. HORIZONTAL DISTRIBUTION PIPING SHALL HAVE CONTINUOUS SLOPE TO THE FLOOR DRAINS.
- GAS DOWN TO KITCHEN EQUIPMENT. PROVIDE AUTOMATIC EMERGENCY SHUT-OFF VALVE IN NEEL EMERGENCY SHUT-OFF INTERLOCKED TO HOOD FIRE SUPPRESSION SYSTEM. COORDINATE EXACT LOCATION WITH THE KITCHEN HOOD VENDOR AND LOCAL AHJ REQUIREMENTS.

NOTE:
 ENSURE ALL TRAP PRIMERS ARE ACCESSIBLE OR NOT LOCATED ABOVE ANY LAMP FIXTURES OF EQUIPMENT.

NOTE:
 COORDINATE ALL PLUMBING LOCATIONS WITH ELECTRICAL LOCATIONS. WATER LINES NOT TO BE INSTALLED ABOVE RECEPTACLES.

NOTE:
 PLUMBING CONTRACTOR SHALL PROVIDE 300A VALVE REDUCING "AUTOMATIC VARIABLE SET POINT BALANCING VALVE OR EQUIVALENT AT EACH HOT WATER CONNECTION CONNECTION TO THE HOT WATER SYSTEM. PRESSURE VALVES ARE INSTALLED IN AN ACCESSIBLE LOCATION FOR ADJUSTMENT AND SERVICE. SYSTEM SHALL BE SET FOR A DISPERSE TEMPERATURE DIFFERENCE FROM WATER HEATER SET POINT. CONSULT WITH THE ORIGINAL PUMP MANUFACTURER FOR ADDITIONAL CONTROLS AND BALANCING INSTRUCTIONS.



PLUMBING SUPPLY PLAN
 NOT TO SCALE



PERMIT - 05/30/2024



STORE NO.: 5134
 CROSS ROADS
 US HWY 380 & WALLMART DR
 CROSS ROADS, TX 76227

DATE	DESCRIPTION
05/30/24	CONTRACT PERMIT 513
05/30/24	ISSUANCE
05/30/24	CAD CORRECTIONS

Drawn: CHW/SLB
 Check: NHI
 Project: CHW/SLB

PLUMBING PLAN
 WATER & GAS

P100

PLUMBING FIXTURE SCHEDULE

TAG	DESCRIPTION	FURNISHED BY	INSTALLED BY	BASIS FOR DESIGN		REMARKS	CONNECTION SIZE			WATER SUPPLY FIXTURE UNITS			DRAINAGE FIXTURE UNITS
				MANUFACTURER	MODEL		CW	HW	WASTE	CW	HW	TOTAL	
RF-1	1/2" BACKFLOW PREVENTER	GC	GC	CONBRACO	40 300725	3" UNPLATED STEEL, REDUCED PRESSURE ZONE ASSEMBLY LEAD FREE BACKFLOW PREVENTER WITH AUTOMATIC SHUTTER VALVE AND PRESSURE RELIEF VALVE FOR APPROVED EQUAL	1/2"			0	0	0	
RF-2	1/2" BACKFLOW PREVENTER	GC	GC	CONBRACO	44P 307	LEAD FREE REDUCED PRESSURE PRINCIPLE BACKFLOW PREVENTER WITH AUTOMATIC SHUTTER VALVE AND PRESSURE RELIEF VALVE FOR APPROVED EQUAL	1 1/2"			0	0	0	
DM-1	DISH WASHING MACHINE (PLUMBING DUFFY)	RES	OC	SEL ACHN	--	CHEMICAL SANITIZING DISH MACHINE WITH 1/2" GALVA ELECTRIC ROOSTER HOT AND PUMPED OUTLET	2"	3/4"	5/8"	0	3	3	7
DM-2	DISH WASHING MACHINE (PLUMBING DUFFY)	GC	GC	WARTS	RD-940	2 1/2" GALVA. BRONZE DOWN'S FINGER DOWNPOUT NOZZLE	2"	3/4"	3"				
ET-1	EXPANSION TANK	GC	GC	AMF HCL	31.5	3 GALLON CAPACITY	3/4"			0	0	0	
FL-1	FLOOR CLEANOUT	RES	GC	SET ARCH	--								
FL-2	FLOOR CLEANOUT (1)	GC	GC	SOVA CHEP	832 3194	3/4" BRASS ALUMINUM FLEX CLEANOUT WITH INTERNAL THREADED CLEANOUT PLUG AND ROUND WRENCH END AND ROUND END (ON APPROVED EQUAL WITH EXTERNAL THREADED CLEANOUT PLUG)			3"			0	
FL-3	FLOOR CLEANOUT (4)	GC	GC	SOVA CHEP	832 4198	3/4" BRASS ALUMINUM FLEX CLEANOUT WITH INTERNAL THREADED CLEANOUT PLUG AND ROUND WRENCH END AND ROUND END (ON APPROVED EQUAL WITH EXTERNAL THREADED CLEANOUT PLUG)			4"			0	
FD-1	FLOOR DRAIN	GC	GC	SOVA CHEP	843 2 708	1/4" POLYMER FLOOR DRAIN WITH PVC BODY, ROUND POSITIVE METAL TRAP AND STRAINER AND TRAP FRAME 1/2" X 1/2"	1/2"						2
FL-1	FLOOR DRAIN	GC	GC	JAY K SMITH	82311	BRASS, 1/2" DIA. WITH CAST BRONZE BODY AND BRASS OUTLET			3"				2
FL-1	FLOOR SINK	GC	GC	SOVA CHEP	861 3912	HEAVY DUTY PVC FLOOR SINK WITH ALUMINUM DOWN BOTTOM STRAINER AND OPTIM 1/4" PVC SINK							5
GR-1	GREASE INTERCEPTOR	GC	GC	CUSTOM	--	1.5 GALLON LOW PRESSURE GREASE INTERCEPTOR			4"				0
GR-1	GAS LINE/CHECK	RES	GC	SEL ACHN	--	COMMERCIAL QUALITY HOT & COLD WATER WALL MOUNTED SUPPLY ARMS SMALL WALL MOUNTED, INST. HOT STOP AND C-STOP VALVE, FAUCETS - (AS FURNISH) 1/2" NPT	1/2"	1/2"		2.25	2.25	3	
HS-1	RESTROOM WASH NOSE BS	RES	GC	SEL ACHN	--	WALL FAUCET WITH HOT TAP WATER	1/2"			1.5		1.5	1
HS-1	RESTROOM WASH NOSE BS	GC	GC	KOBLER	X 2084	ADA ACCESSIBLE WALL MOUNTED PORCELAIN LAVATORY PROVIDER FURNISH 1/2" (1/2" X 1/2" DRAIN BACK TO REST ROOM WITH CONCEALED GARBAGE IN WALL)	1/2"		3"				1
HS-1	RESTROOM HAND SINK	RES	GC	SEL ACHN	--	PLUG IN ADA ACCESSIBLE FAUCET WITH 0.5 GPM REDUCTION AND THERMOSTATIC MIXING VALVE	1/2"	1/2"		1.5	1.5	2	
HS-1	RESTROOM HAND SINK	GC	GC	SEL ACHN	--	ADA ACCESSIBLE FAUCET WITH 0.5 GPM REDUCTION AND THERMOSTATIC MIXING VALVE	1/2"	1/2"		1.5	1.5	2	1
HS-1	RESTROOM HAND SINK	RES	GC	SEL ACHN	--	STAINLESS STEEL WITH METAL MOUNTING BRACKETS AND BRASS 1/2" X 1/2" MOUNTED FAUCET WITH 0.5 GPM REDUCTION	1/2"	1/2"		1.5	1.5	2	1
JC-1	JC MAKER - BOH	RES	JCS	SET ARCH	--	BACK OF HOUSE J.C. MAKER WITH BOV	1/2"			1		1	
JC-2	JC MAKER - SOVA	RES	JCS	SET ARCH	--	SOVA MAKE THE HOUSE J.C. MAKER	1/2"			1		1	
JC-3	JC MAKER - BOH	GC	GC	FAST	M801402	REFLECTIVE "ICE CUBE" MOUNTED J.C. MAKER WITH BOV. INSTAL. MOP BASKET IN A ROW OF 30 FT OR THERE AS NO VOID BETWEEN THE MOP BASKET AND THE SLAB.	1/2"	1/2"		2.25	2.25	3	2
JC-3	JC MAKER - SOVA	GC	GC	FAST	M801402	REFLECTIVE "ICE CUBE" MOUNTED J.C. MAKER WITH BOV. INSTAL. MOP BASKET IN A ROW OF 30 FT OR THERE AS NO VOID BETWEEN THE MOP BASKET AND THE SLAB.	1/2"	1/2"		2.25	2.25	3	2
JC-3	JC MAKER - BOH	GC	GC	FAST	M801402	REFLECTIVE "ICE CUBE" MOUNTED J.C. MAKER WITH BOV. INSTAL. MOP BASKET IN A ROW OF 30 FT OR THERE AS NO VOID BETWEEN THE MOP BASKET AND THE SLAB.	1/2"	1/2"		2.25	2.25	3	2
JC-3	JC MAKER - SOVA	GC	GC	FAST	M801402	REFLECTIVE "ICE CUBE" MOUNTED J.C. MAKER WITH BOV. INSTAL. MOP BASKET IN A ROW OF 30 FT OR THERE AS NO VOID BETWEEN THE MOP BASKET AND THE SLAB.	1/2"	1/2"		2.25	2.25	3	2
KE-1	KEY COBBER	RES	GC	SET ARCH	--	WALL MOUNTED KEY COBBER WITH 1/2" X 1/2" COBBER, FILLER VALVE AND NPT FEMALE INLET	1/2"			1.5		1.5	
KE-1	KEY COBBER	GC	GC	SET ARCH	--	WALL MOUNTED KEY COBBER WITH 1/2" X 1/2" COBBER, FILLER VALVE AND NPT FEMALE INLET	1/2"			1.5		1.5	
KE-1	KEY COBBER	GC	GC	SET ARCH	--	WALL MOUNTED KEY COBBER WITH 1/2" X 1/2" COBBER, FILLER VALVE AND NPT FEMALE INLET	1/2"			1.5		1.5	
KE-1	KEY COBBER	GC	GC	SET ARCH	--	WALL MOUNTED KEY COBBER WITH 1/2" X 1/2" COBBER, FILLER VALVE AND NPT FEMALE INLET	1/2"			1.5		1.5	
KE-1	KEY COBBER	GC	GC	SET ARCH	--	WALL MOUNTED KEY COBBER WITH 1/2" X 1/2" COBBER, FILLER VALVE AND NPT FEMALE INLET	1/2"			1.5		1.5	
KE-1	KEY COBBER	GC	GC	SET ARCH	--	WALL MOUNTED KEY COBBER WITH 1/2" X 1/2" COBBER, FILLER VALVE AND NPT FEMALE INLET	1/2"			1.5		1.5	
KE-1	KEY COBBER	GC	GC	SET ARCH	--	WALL MOUNTED KEY COBBER WITH 1/2" X 1/2" COBBER, FILLER VALVE AND NPT FEMALE INLET	1/2"			1.5		1.5	
KE-1	KEY COBBER	GC	GC	SET ARCH	--	WALL MOUNTED KEY COBBER WITH 1/2" X 1/2" COBBER, FILLER VALVE AND NPT FEMALE INLET	1/2"			1.5		1.5	
KE-1	KEY COBBER	GC	GC	SET ARCH	--	WALL MOUNTED KEY COBBER WITH 1/2" X 1/2" COBBER, FILLER VALVE AND NPT FEMALE INLET	1/2"			1.5		1.5	
KE-1	KEY COBBER	GC	GC	SET ARCH	--	WALL MOUNTED KEY COBBER WITH 1/2" X 1/2" COBBER, FILLER VALVE AND NPT FEMALE INLET	1/2"			1.5		1.5	
KE-1	KEY COBBER	GC	GC	SET ARCH	--	WALL MOUNTED KEY COBBER WITH 1/2" X 1/2" COBBER, FILLER VALVE AND NPT FEMALE INLET	1/2"			1.5		1.5	
KE-1	KEY COBBER	GC	GC	SET ARCH	--	WALL MOUNTED KEY COBBER WITH 1/2" X 1/2" COBBER, FILLER VALVE AND NPT FEMALE INLET	1/2"			1.5		1.5	
KE-1	KEY COBBER	GC	GC	SET ARCH	--	WALL MOUNTED KEY COBBER WITH 1/2" X 1/2" COBBER, FILLER VALVE AND NPT FEMALE INLET	1/2"			1.5		1.5	
KE-1	KEY COBBER	GC	GC	SET ARCH	--	WALL MOUNTED KEY COBBER WITH 1/2" X 1/2" COBBER, FILLER VALVE AND NPT FEMALE INLET	1/2"			1.5		1.5	
KE-1	KEY COBBER	GC	GC	SET ARCH	--	WALL MOUNTED KEY COBBER WITH 1/2" X 1/2" COBBER, FILLER VALVE AND NPT FEMALE INLET	1/2"			1.5		1.5	
KE-1	KEY COBBER	GC	GC	SET ARCH	--	WALL MOUNTED KEY COBBER WITH 1/2" X 1/2" COBBER, FILLER VALVE AND NPT FEMALE INLET	1/2"			1.5		1.5	
KE-1	KEY COBBER	GC	GC	SET ARCH	--	WALL MOUNTED KEY COBBER WITH 1/2" X 1/2" COBBER, FILLER VALVE AND NPT FEMALE INLET	1/2"			1.5		1.5	
KE-1	KEY COBBER	GC	GC	SET ARCH	--	WALL MOUNTED KEY COBBER WITH 1/2" X 1/2" COBBER, FILLER VALVE AND NPT FEMALE INLET	1/2"			1.5		1.5	
KE-1	KEY COBBER	GC	GC	SET ARCH	--	WALL MOUNTED KEY COBBER WITH 1/2" X 1/2" COBBER, FILLER VALVE AND NPT FEMALE INLET	1/2"			1.5		1.5	
KE-1	KEY COBBER	GC	GC	SET ARCH	--	WALL MOUNTED KEY COBBER WITH 1/2" X 1/2" COBBER, FILLER VALVE AND NPT FEMALE INLET	1/2"			1.5		1.5	
KE-1	KEY COBBER	GC	GC	SET ARCH	--	WALL MOUNTED KEY COBBER WITH 1/2" X 1/2" COBBER, FILLER VALVE AND NPT FEMALE INLET	1/2"			1.5		1.5	
KE-1	KEY COBBER	GC	GC	SET ARCH	--	WALL MOUNTED KEY COBBER WITH 1/2" X 1/2" COBBER, FILLER VALVE AND NPT FEMALE INLET	1/2"			1.5		1.5	
KE-1	KEY COBBER	GC	GC	SET ARCH	--	WALL MOUNTED KEY COBBER WITH 1/2" X 1/2" COBBER, FILLER VALVE AND NPT FEMALE INLET	1/2"			1.5		1.5	
KE-1	KEY COBBER	GC	GC	SET ARCH	--	WALL MOUNTED KEY COBBER WITH 1/2" X 1/2" COBBER, FILLER VALVE AND NPT FEMALE INLET	1/2"			1.5		1.5	
KE-1	KEY COBBER	GC	GC	SET ARCH	--	WALL MOUNTED KEY COBBER WITH 1/2" X 1/2" COBBER, FILLER VALVE AND NPT FEMALE INLET	1/2"			1.5		1.5	
KE-1	KEY COBBER	GC	GC	SET ARCH	--	WALL MOUNTED KEY COBBER WITH 1/2" X 1/2" COBBER, FILLER VALVE AND NPT FEMALE INLET	1/2"			1.5		1.5	
KE-1	KEY COBBER	GC	GC	SET ARCH	--	WALL MOUNTED KEY COBBER WITH 1/2" X 1/2" COBBER, FILLER VALVE AND NPT FEMALE INLET	1/2"			1.5		1.5	
KE-1	KEY COBBER	GC	GC	SET ARCH	--	WALL MOUNTED KEY COBBER WITH 1/2" X 1/2" COBBER, FILLER VALVE AND NPT FEMALE INLET	1/2"			1.5		1.5	
KE-1	KEY COBBER	GC	GC	SET ARCH	--	WALL MOUNTED KEY COBBER WITH 1/2" X 1/2" COBBER, FILLER VALVE AND NPT FEMALE INLET	1/2"			1.5		1.5	
KE-1	KEY COBBER	GC	GC	SET ARCH	--	WALL MOUNTED KEY COBBER WITH 1/2" X 1/2" COBBER, FILLER VALVE AND NPT FEMALE INLET	1/2"			1.5		1.5	
KE-1	KEY COBBER	GC	GC	SET ARCH	--	WALL MOUNTED KEY COBBER WITH 1/2" X 1/2" COBBER, FILLER VALVE AND NPT FEMALE INLET	1/2"			1.5		1.5	
KE-1	KEY COBBER	GC	GC	SET ARCH	--	WALL MOUNTED KEY COBBER WITH 1/2" X 1/2" COBBER, FILLER VALVE AND NPT FEMALE INLET	1/2"			1.5		1.5	
KE-1	KEY COBBER	GC	GC	SET ARCH	--	WALL MOUNTED KEY COBBER WITH 1/2" X 1/2" COBBER, FILLER VALVE AND NPT FEMALE INLET	1/2"			1.5		1.5	
KE-1	KEY COBBER	GC	GC	SET ARCH	--	WALL MOUNTED KEY COBBER WITH 1/2" X 1/2" COBBER, FILLER VALVE AND NPT FEMALE INLET	1/2"			1.5		1.5	
KE-1	KEY COBBER	GC	GC	SET ARCH	--	WALL MOUNTED KEY COBBER WITH 1/2" X 1/2" COBBER, FILLER VALVE AND NPT FEMALE INLET	1/2"			1.5		1.5	
KE-1	KEY COBBER	GC	GC	SET ARCH	--	WALL MOUNTED KEY COBBER WITH 1/2" X 1/2" COBBER, FILLER VALVE AND NPT FEMALE INLET	1/2"			1.5		1.5	
KE-1	KEY COBBER	GC	GC	SET ARCH	--	WALL MOUNTED KEY COBBER WITH 1/2" X 1/2" COBBER, FILLER VALVE AND NPT FEMALE INLET	1/2"			1.5		1.5	
KE-1	KEY COBBER	GC	GC	SET ARCH	--	WALL MOUNTED KEY COBBER WITH 1/2" X 1/2" COBBER, FILLER VALVE AND NPT FEMALE INLET	1/2"			1.5		1.5	
KE-1	KEY COBBER	GC	GC	SET ARCH	--	WALL MOUNTED KEY COBBER WITH 1/2" X 1/2" COBBER, FILLER VALVE AND NPT FEMALE INLET	1/2"			1.5		1.5	
KE-1	KEY COBBER	GC	GC	SET ARCH	--	WALL MOUNTED KEY COBBER WITH 1/2" X 1/2" COBBER, FILLER VALVE AND NPT FEMALE INLET	1/2"			1.5		1.5	
KE-1	KEY COBBER	GC	GC	SET ARCH	--	WALL MOUNTED KEY COBBER WITH 1/2" X 1/2" COBBER, FILLER VALVE AND NPT FEMALE INLET	1/2"			1.5		1.5	
KE-1	KEY COBBER	GC	GC	SET ARCH	--	WALL MOUNTED KEY COBBER WITH 1/2" X 1/2" COBBER, FILLER VALVE AND NPT FEMALE INLET	1/2"			1.5		1.5	
KE-1	KEY COBBER	GC	GC	SET ARCH	--	WALL MOUNTED KEY COBBER WITH 1/2" X 1/2" COBBER, FILLER VALVE AND NPT FEMALE INLET	1/2"			1.5		1.5	
KE-1	KEY COBBER	GC	GC	SET ARCH	--	WALL MOUNTED KEY COBBER WITH 1/2" X 1/2" COBBER, FILLER VALVE AND NPT FEMALE INLET	1/2"			1.5		1.5	
KE-1	KEY COBBER	GC	GC	SET ARCH	--	WALL MOUNTED KEY COBBER WITH 1/2" X 1/2" COBBER, FILLER VALVE AND NPT FEMALE INLET	1/2"			1.5		1.5	
KE-1	KEY COBBER	GC	GC	SET ARCH	--	WALL MOUNTED KEY COBBER WITH 1/2" X 1/2" COBBER, FILLER VALVE AND NPT FEMALE INLET	1/2"			1.5		1.5	
KE-1	KEY COBBER	GC	GC	SET ARCH	--	WALL MOUNTED KEY COBBER WITH 1/2" X 1/2" COBBER, FILLER VALVE AND NPT FEMALE INLET	1/2"			1.5		1.5	
KE-1	KEY COBBER	GC	GC	SET ARCH	--	WALL MOUNTED KEY COBBER WITH 1/2" X 1/2" COBBER, FILLER VALVE AND NPT FEMALE INLET	1/2"			1.5		1.5	
KE-1	KEY COBBER	GC	GC	SET ARCH	--	WALL MOUNTED KEY COBBER WITH 1/2" X 1/2" COBBER, FILLER VALVE AND NPT FEMALE INLET	1/2"			1.5		1.5	
KE-1	KEY COBBER	GC	GC	SET ARCH	--	WALL MOUNTED KEY COBBER WITH 1/2" X 1/2" COBBER, FILLER VALVE AND NPT FEMALE INLET	1/2"			1.5		1.5	
KE-1	KEY COBBER	GC	GC	SET ARCH	--	WALL MOUNTED KEY COBBER WITH 1/2" X 1/2" COBBER, FILLER VALVE AND NPT FEMALE INLET	1/2"			1.5		1.5	
KE-1	KEY COBBER	GC	GC	SET ARCH	--	WALL MOUNTED KEY COBBER WITH 1/2" X 1/2" COBBER, FILLER VALVE AND NPT FEMALE INLET	1/2"			1.5		1.5	
KE-1	KEY COBBER	GC	GC	SET ARCH	--	WALL MOUNTED KEY COBBER WITH 1/2" X 1/2" COBBER, FILLER VALVE AND NPT FEMALE INLET	1/2"			1.5		1.5	
KE-1	KEY COBBER	GC	GC	SET ARCH	--	WALL MOUNTED KEY COBBER WITH 1/2" X 1/2" COBBER, FILLER VALVE AND NPT FEMALE INLET	1/2"			1.5		1.5	
KE-1	KEY COBBER	GC	GC	SET ARCH	--	WALL MOUNTED KEY COBBER WITH 1/2" X 1/2" COBBER, FILLER VALVE AND NPT FEMALE INLET	1/2"			1.5		1.5	
KE-1	KEY COBBER	GC	GC	SET ARCH	--	WALL MOUNTED KEY COBBER WITH 1/2" X 1/2" COBBER, FILLER VALVE AND NPT FEMALE INLET	1/2"			1.5		1.5	
KE-1	KEY COBBER	GC	GC	SET ARCH	--	WALL MOUNTED KEY COBBER WITH 1/2" X 1/2" COBBER, FILLER VALVE AND NPT FEMALE INLET	1/2"			1.5		1.5	
KE-1	KEY COBBER	GC	GC	SET ARCH	--	WALL MOUNTED KEY COBBER WITH 1/2" X 1/2" COBBER, FILLER VALVE AND NPT FEMALE INLET	1/2"			1.5		1.5	
KE-1	KEY COBBER	GC	GC	SET ARCH	--	WALL MOUNTED KEY COBBER WITH 1/2" X 1/2" COBBER, FILLER VALVE AND NPT FEMALE INLET	1/2"			1.5		1.5	
KE-1	KEY COBBER	GC	GC	SET ARCH	--	WALL MOUNTED KEY COBBER WITH 1/2" X 1/2" COBBER, FILLER VALVE AND NPT FEMALE INLET	1/						

