



Comfort. Under control.

09-12 FIVE GUYS #1856 - EDMOND, OK (RENEW)

CheckList Information

Name :	RENEW SITE PICTURES & FINAL BUILDING PERFORMANCE	Status :	NotSubmitted
Assigned Organization :	National TAB	Asset :	
Requesting Organization :	National TAB		

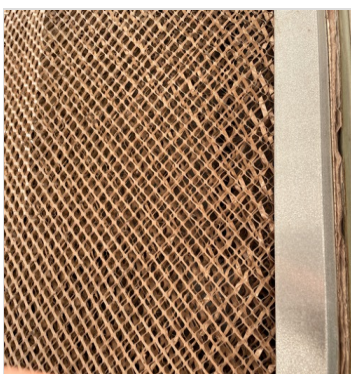
CheckList Item Details

ROOF TOP BEFORE AND AFTER PICTURES

RTU 1 O.A. MESH FILTER (BEFORE AND AFTER)



Clean.jpeg



Dirty.jpeg

RTU 1 FINAL FILTER (BEFORE AND AFTER)



Clean.jpeg

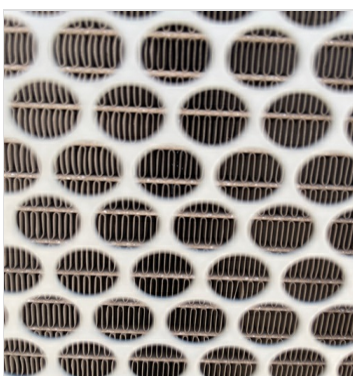


Dirty.jpeg

RTU 1 CONDENSER COIL (BEFORE AND AFTER)



Clean.jpeg



Dirty.jpeg

RTU 1 EVAPORATOR COIL (BEFORE AND AFTER)



Clean.jpeg



Dirty.jpeg

RTU 1 - CONDENSATE DRAIN



Drain.jpeg

RTU 1 CONDENSATE PAN



Pan.jpeg

RTU 1 COMBUSITION FAN AND BURNER
CONTROLS COMPARTMENT



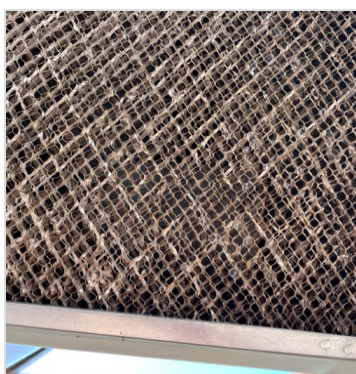
File.jpeg

RTU 1 HEAT EXCHANGER

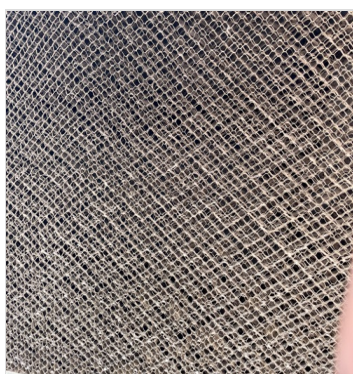


File.jpeg

RTU 2 OA FILTER (BEFORE AND AFTER)



Clean.jpeg



Dirty.jpeg

RTU 2 FINAL FILTER (BEFORE AND AFTER)



Dirty.jpeg

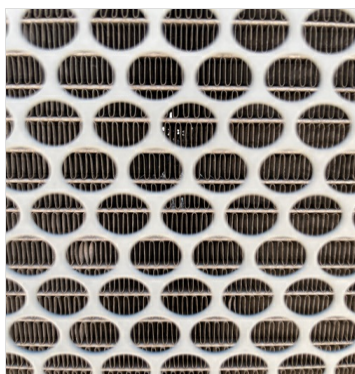


Clean.jpeg

RTU 2 CONDENSER COIL (BEFORE AND AFTER)



Dirty.jpeg



Clean.jpeg

RTU 2 EVAPORATOR COIL (BEFORE AND AFTER)



Dirty.jpeg



Clean.jpeg

RTU 2 CONDENSATE DRAIN



Drain.jpeg

RTU 2 CONDENSATE PAN



Pan.jpeg

RTU 2 COMBUSITION FAN AND BURNER
CONTROLS COMPARTMENT



File.jpeg

RTU 2 HEAT EXCHANGER



File.jpeg

MUA FAN BEFORE AND AFTER PICTURES

MUA OA MESH FILTERS



Clean.jpeg



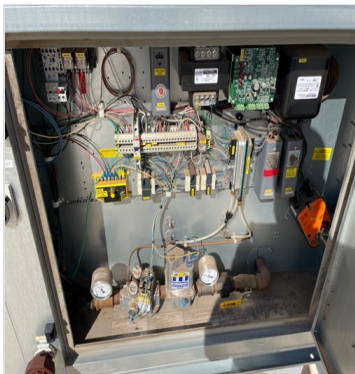
Dirty.jpeg

MUA BLOWER/MOTOR COMPARTMENT



File.jpeg

MUA HEATER CONTROLS COMPARTMENT



File.jpeg

MUA DX COIL, CONDENSATE PAN, AND DRAIN (IF UNIT HAS ONE)



File.jpeg



File.jpeg

EXHAUST FAN BEFORE AND AFTER PICTURES

EXHAUST FAN KEF1 MOTOR HOUSING CLEANED



File.jpeg



File.jpeg

EXHAUST FAN KEF1 GREASE CUP PROPERLY INSTALLED



File.jpeg

EXHAUST FAN KEF2 MOTOR HOUSING CLEANED



File.jpeg



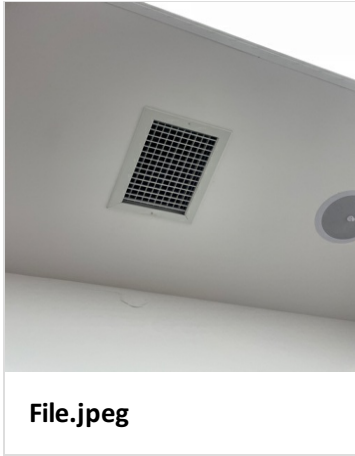
File.jpeg

EXHAUST FAN KEF2 GREASE CUP PROPERLY
INSTALLED

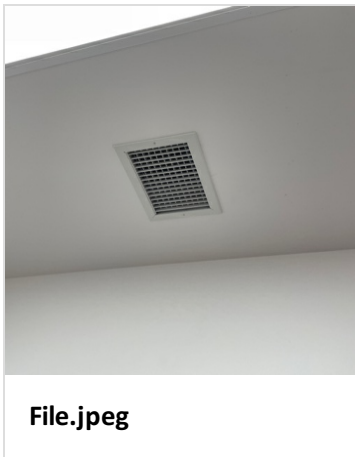


File.jpeg

EF-1 RESTROOMS FAN HOUSING PICTURE



EF-2 RESTROOMS FAN HOUSING PICTURE



FINAL BUILDING PERFORMANCE

ADD PHOTO OF THE FINAL PRESSURE TAKEN WITH YOUR METER AT THE FRONT AND BACK KITCHEN DOOR

ADD SHORT VIDEO OF HOOD CAPTURE WHILE COOKING OR WITH SMOKE CANDLE

Notes/Comments :