

PROJECT INFORMATION

NEW CAR WASH FACILITY:
TSUNAMI EXPRESS CAR WASH
115 E WOLF RUN • MUKWONAGO, WI 53149

PROFESSIONAL SEAL

SHEET DATES

SHEET ISSUE SEP. 5, 2025

REVISIONS

NO.	DESCRIPTION

JOB NUMBER

240303900

SHEET NUMBER

H1.1

GENERAL NOTES

- DUCT FITTINGS SHALL BE TYPE SHOWN ON PLAN OR CALLED OUT BY KEYNOTE. SEE DETAIL 1/H3.0 FOR ADDITIONAL FITTING DETAIL.
- VERIFY BUILDING OPENING AND CURB SIZES LISTED ON PLANS WITH ACTUAL EQUIPMENT SCHEDULED AND SUPPLIED. COORDINATE REQUIRED OPENING SIZES AND LOCATIONS WITH CONTRACTORS PROVIDING OPENING SCHEDULES AND ACTUAL EQUIPMENT SIZES SHALL TAKE PRECEDENCE OVER SIZES SHOWN ON PLANS.
- PENETRATE MASONRY WALLS PER STRUCTURAL DRAWINGS. PENETRATIONS NOT PERMITTED THROUGH MARKED GROUTED/REINFORCED MASONRY, AND SHALL NOT BE MODIFIED WITHOUT WRITTEN APPROVAL FROM STRUCTURAL ENGINEER.
- DETAIL REFERENCES ON PLANS ARE TO AID THE CONTRACTOR IN IDENTIFYING THE APPLICABLE DETAIL. NOT ALL DETAILS, OR INSTANCES OF DETAILS, ARE REFERENCED ON PLANS. CONTRACTOR IS RESPONSIBLE TO REVIEW AND COMPLY WITH ALL APPLICABLE DETAILS WHETHER OR NOT REFERENCED ON PLANS.
- COORDINATE LOCATION OF ALL EXPOSED PIPING AND DUCTWORK WITH OWNER PRIOR TO INSTALLATION.
- IF DUCT SYSTEMS ARE USED FOR TEMPORARY HEAT, PROVIDE TEMPORARY FILTERS AT RETURN AIR OPENINGS AND INSTALL FILTERS IN THE UNITS EQUIVALENT TO THE EFFICIENCY OF THE SPECIFIED FILTERS FOR THE UNIT. IF PROPER EFFICIENCY FILTERS ARE NOT INSTALLED IN UNIT, UNIT AND ALL DUCTWORK DOWNSTREAM OF UNIT SHALL BE CLEANED BEFORE TEST AND BALANCE.

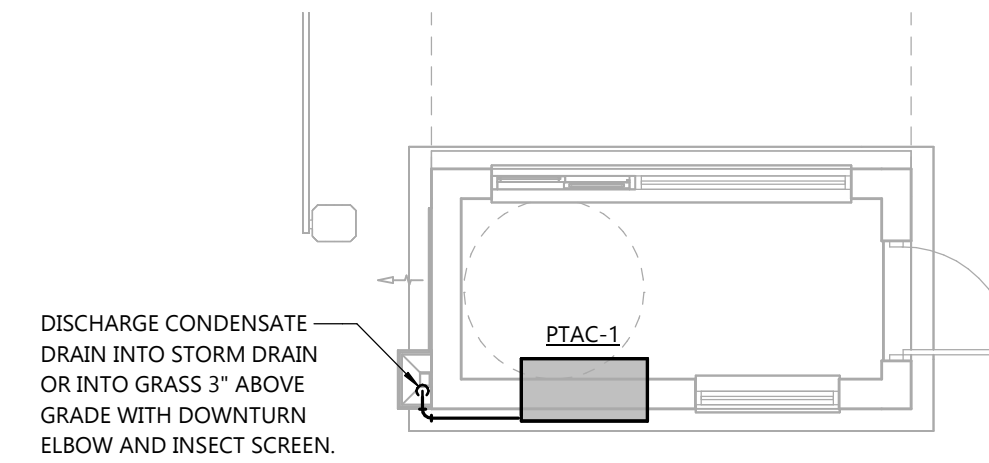
KEYNOTES

- ④ - ④ SEE DUCT FITTING DETAILS 1/H3.0
- ① NOT USED
- ② NOT USED
- ③ NOT USED
- ④ WMM OVER DUCT OPENING

GAS LOAD SUMMARY

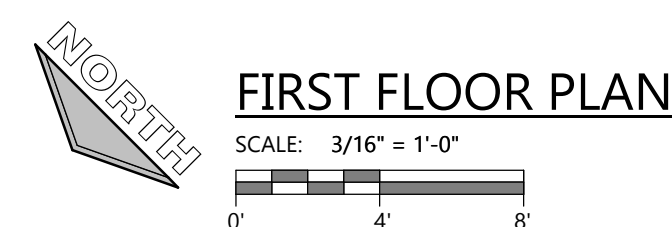
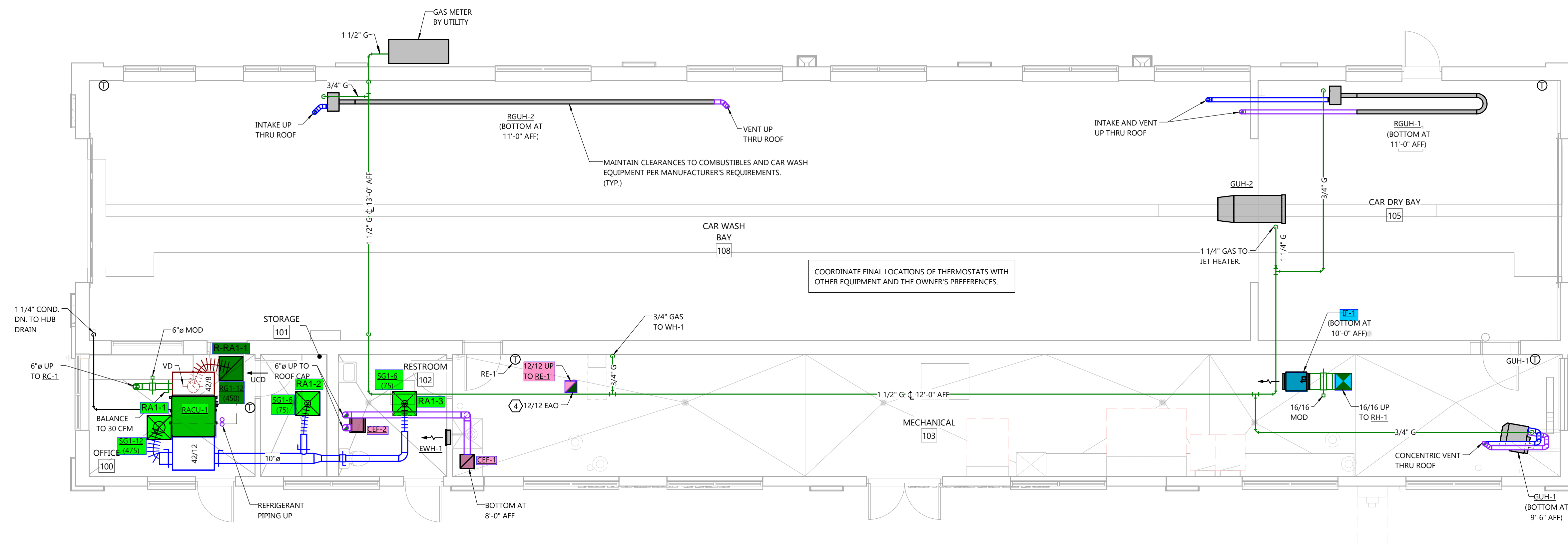
ITEM	MBH INPUT	REQUIRED PRESSURE (1)
RGUH-1	75	6"-14" W.C.
RGUH-2	125	6"-14" W.C.
GWH-1	200	5"-14" W.C.
GUH-1	120	5" W.C.
GUH-2	950	6" W.C.
GRAND TOTAL	1,470	

- GAS PRESSURE AT METER = 2 PSIG
- PROVIDE GAS PRESSURE REGULATOR AT EACH PIECE OF EQUIPMENT LISTED ABOVE.
- CONNECT TO EACH PIECE OF EQUIPMENT LISTED ABOVE.
- (1) VERIFY PRESSURE REQUIRED WITH ACTUAL EQUIPMENT INSTALLED ON PROJECT BEFORE SIZING REGULATOR.



SALES BOOTH

SCALE: 3/16" = 1'-0"





Always a Better Plan

100 Camelot Drive
Fond du Lac, WI 54935
920-926-9800
excelengineer.com

PROJECT INFORMATION

NEW CAR WASH FACILITY:
TSUNAMI EXPRESS CAR WASH
115 E WOLF RUN • MUKWONAGO, WI 53149

PROFESSIONAL SEAL

SHEET DATES

SHEET ISSUE SEP. 5, 2025

REVISIONS

NO.	DESCRIPTION

JOB NUMBER

240303900

SHEET NUMBER

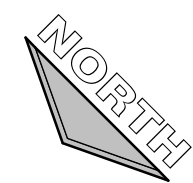
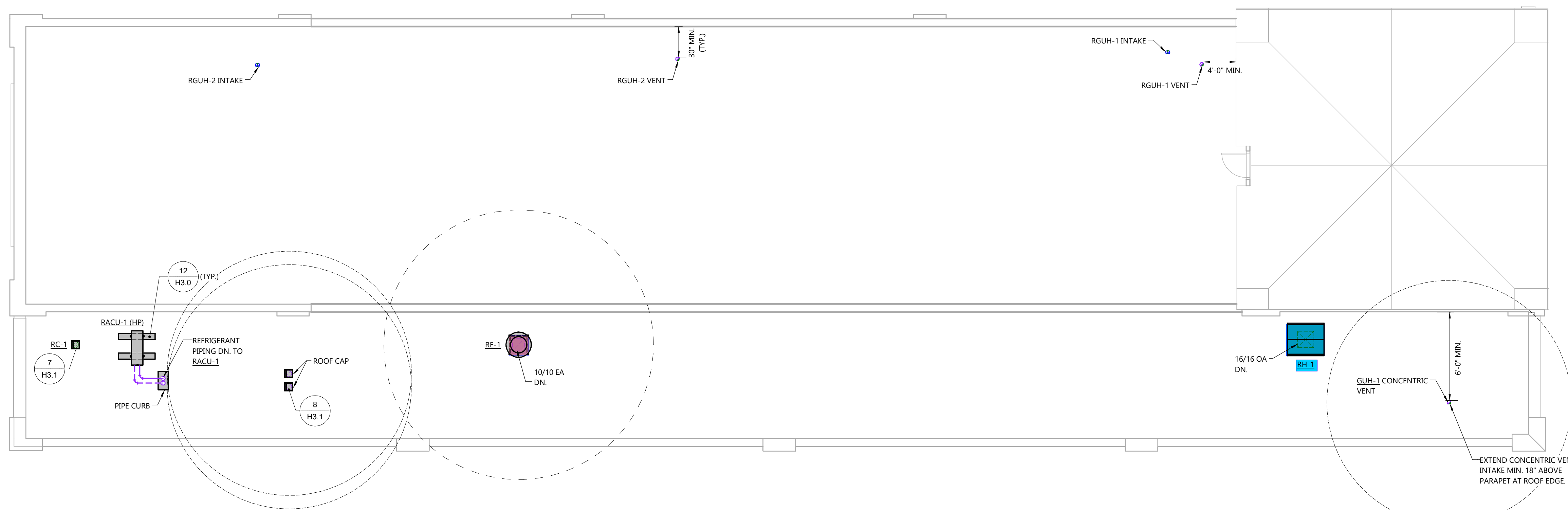
H1.3

GENERAL NOTES

- VERIFY BUILDING OPENING AND CURB SIZES LISTED ON PLANS WITH ACTUAL EQUIPMENT SCHEDULED AND SUPPLIED. COORDINATE REQUIRED OPENING SIZES AND LOCATIONS WITH CONTRACTORS PROVIDING OPENING. SCHEDULES AND ACTUAL EQUIPMENT SIZES SHALL TAKE PRECEDENCE OVER SIZES SHOWN ON PLANS.
- DETAIL REFERENCES ON PLANS ARE TO AID THE CONTRACTOR IN IDENTIFYING THE APPLICABLE DETAIL. NOT ALL DETAILS, OR INSTANCES OF DETAILS, ARE REFERENCED ON PLANS. CONTRACTOR IS RESPONSIBLE TO REVIEW AND COMPLY WITH ALL APPLICABLE DETAILS WHETHER OR NOT REFERENCED ON PLANS.
- TERMINATE ALL UNIT HEATER INTAKES/FLUES MINIMUM 10'-0" FROM EDGE OF ROOF.
- TERMINATE ALL GAS REGULATOR VENTS MINIMUM 10'-0" FROM EDGE OF ROOF. VENTS SHALL NOT BE TERMINATED OUT EXTERIOR WALLS
- DASHED LINES AROUND EXHAUST TERMINATIONS INDICATE 10'-0" REQUIRED CLEARANCE TO OUTSIDE AIR INTAKES.

KEYNOTES

- ① CONNECT TO EXISTING
- ② NOT USED
- ③ VERIFY LOCATION WITH OWNER
- ④ WMM OVER DUCT OPENING



ROOF PLAN

SCALE: 3/16" = 1'-0"



HVAC ROOF PLAN