

**UNIT - 1,2**

Project: 2141 Irvine Ca  
Prepared By:

10/03/2023  
02:43PM

**UNIT - 1,2**

**Tag Cover Sheet  
Unit Report  
Certified Drawing  
Performance Report**

## Unit Report For UNIT - 1,2

Project: 2141 Irvine Ca  
Prepared By:

10/03/2023  
02:43PM

### Unit Parameters

Unit Model:.....**50FCQM14A3A6-6U0A0**  
 Unit Size:.....**14 (12.5 Tons)**  
 Volts-Phase-Hertz:.....**460-3-60**  
 Heating Type:.....**Heat Pump**  
 Heat Control:.....**Two-Stage Cooling / One Circuit**  
 Duct Cfg:.....**Vertical Supply / Vertical Return**

### Dimensions (ft. in.) & Weight (lb.) \*\*\*

Unit Length:.....**9' 7.875"**  
 Unit Width:.....**5' 3.375"**  
 Unit Height:.....**4' 9.375"**

\*\*\* Weights and Dimensions are approximate. Weight does not include roof curbs, unit packaging, field installed accessories or factory installed options. Approximate dimensions are provided primarily for shipping purposes. For exact dimensions and weights, refer to appropriate product data catalog.

**Base Unit Weight (Does not include any accessories):**  
**1250**.....lb

### Lines and Filters

Return Air Filter Type:.....**Throwaway**  
 Return Air Filter Quantity:.....**6**  
 Return Air Filter Size:.....**18 x 24 x 2**

**Selection includes construction throwaway filter into the base fan curve.**

### Unit Configuration

High Static(EcoBlue)  
 Al/Cu - Al/Cu  
 Electromechanical Controls w/W7220 Econo Controller  
 Temp Ultra Low Leak Economizer w/Baro Relief  
 Standard Packaging

### Warranty Information

1-Year parts (STD.)  
 5-Year Compressor (std.)

No optional warranties were selected.

**NOTE: Please see Warranty Catalog 500-089 for explanation of policies and ordering methods.**

### Ordering Information

Part Number	Description	Quantity
50FCQM14A3A6-6U0A0	Rooftop Unit	1
	Base Unit	
	High Static(EcoBlue)	
	Electromechanical control, Ultra LOW LEAK EconoMi\$er X temperature economizer, barometric relief and	

# Certified Drawing for UNIT - 1,2

Project: 2141 Irvine Ca  
Prepared By:

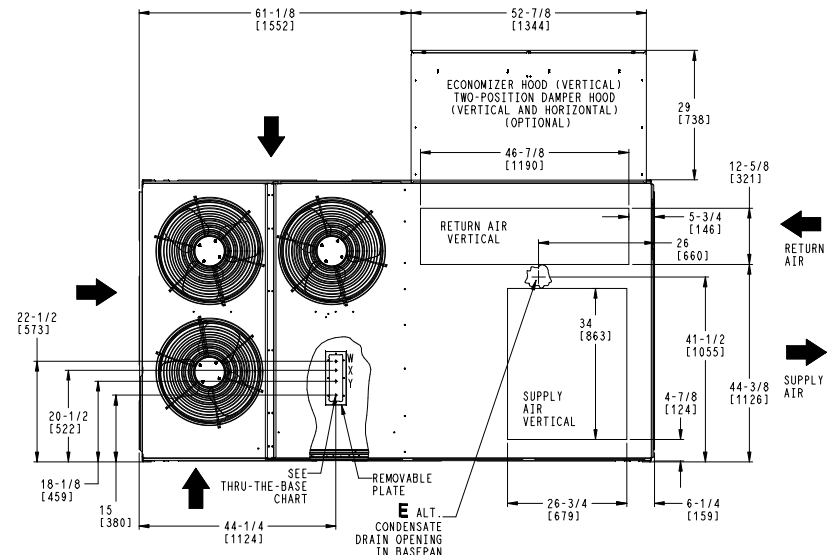
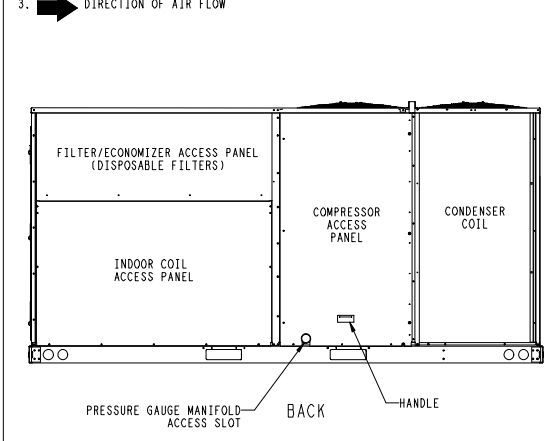
10/03/2023  
02:43PM

**NOTES:**

1. DIMENSIONS ARE IN INCHES, DIMENSIONS IN [ ] ARE IN MILLIMETERS.
2. CENTER OF GRAVITY
3. DIRECTION OF AIR FLOW

THIS DOCUMENT IS THE PROPERTY OF CARRIER CORPORATION AND IS DELIVERED UPON THE EXPRESS CONDITION THAT THE CONTENTS WILL NOT BE DISCLOSED OR USED WITHOUT CARRIER CORPORATION'S WRITTEN CONSENT.

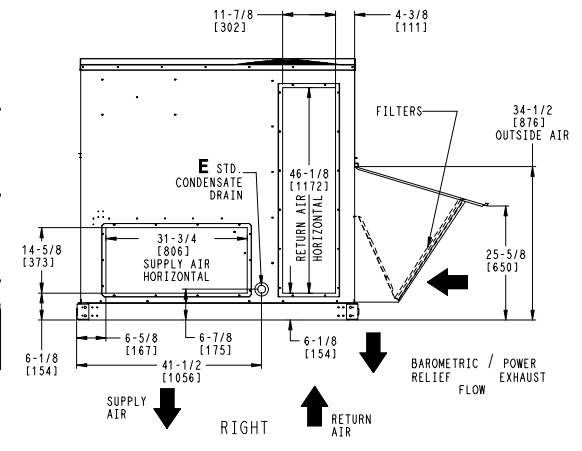
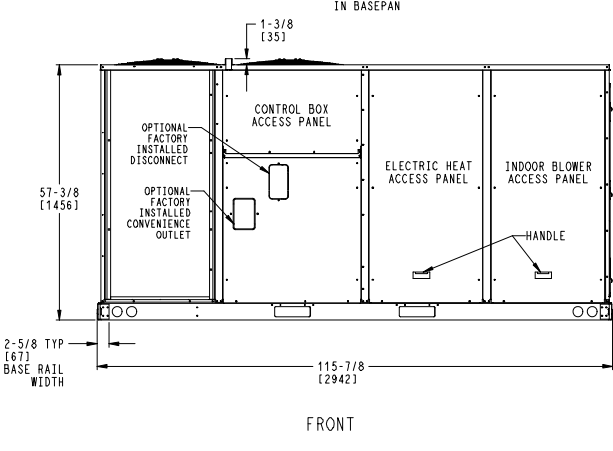
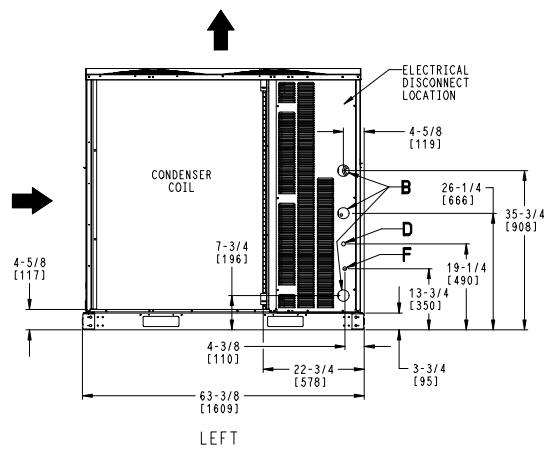
SUBMISSION OF THESE DRAWINGS OR DOCUMENTS DOES NOT CONSTITUTE PART PERFORMANCE OR ACCEPTANCE OF CONTRACT.



CONNECTION SIZES	
B	2 1/2" [64] DIA POWER SUPPLY HOLE
D	7/8" [22] DIA FIELD CONTROL WIRING HOLE
E	3/4"-14 NPT CONDENSATE DRAIN
F	7/8" [22] DIA FIELD CONVENIENCE OUTLET HOLE

THRU-THE-BASE CHART THESE HOLES REQUIRED FOR USE CRBTMPWRO05A00, 006A00, 007A00			
ACCESSORY NO.	THREADED CONDUIT SIZE	WIRE USE	REQ'D HOLE SIZES (MAX.)
005	W 1/2"	ACC.	7/8" [22.2]
	X 1/2"	24V	7/8" [22.2]
	Y 1 1/4"	POWER	1 1/2" [38.1]
006	W 1/2"	ACC.	7/8" [22.2]
	X 1/2"	24V	7/8" [22.2]
	Y 1 1/2"	POWER	2" [50.8]
007	W 1/2"	ACC.	7/8" [22.2]
	X 1/2"	24V	7/8" [22.2]
	Y 2"	POWER	2 1/2" [63.5]

FOR "THRU-THE-BASEPAN" FACTORY OPTION, FITTINGS FOR X & Y ARE PROVIDED AS SPECIFIED ON "006".



ITC CLASSIFICATION	SHEET	DATE	SUPERCEDES	50FCO 14 SINGLE ZONE ELECTRICAL HEAT PUMP	50TM002592	REV
U.S. ECCN: NSR	1 OF 2	5/4/22	-			-

# Certified Drawing for UNIT - 1,2

Project: 2141 Irvine Ca  
Prepared By:

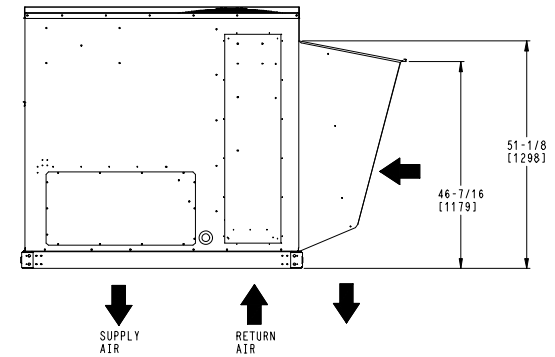
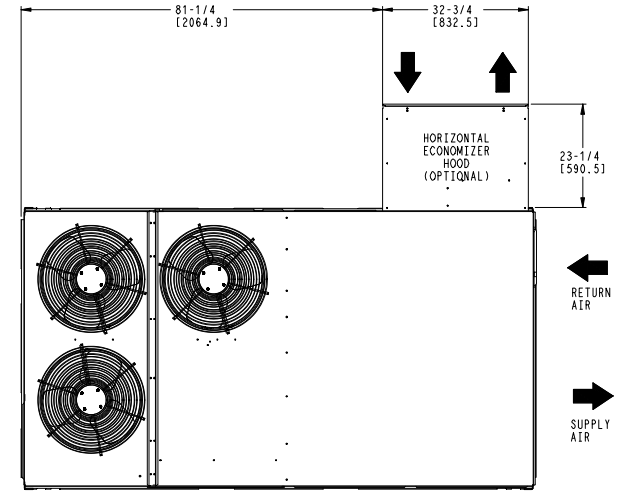
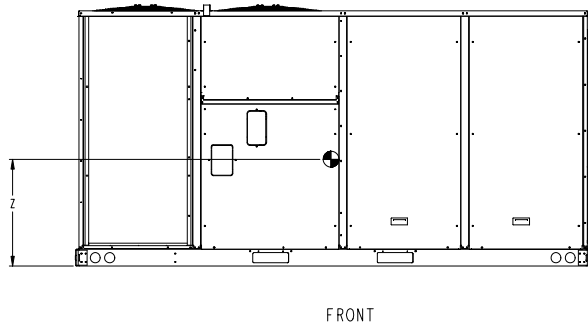
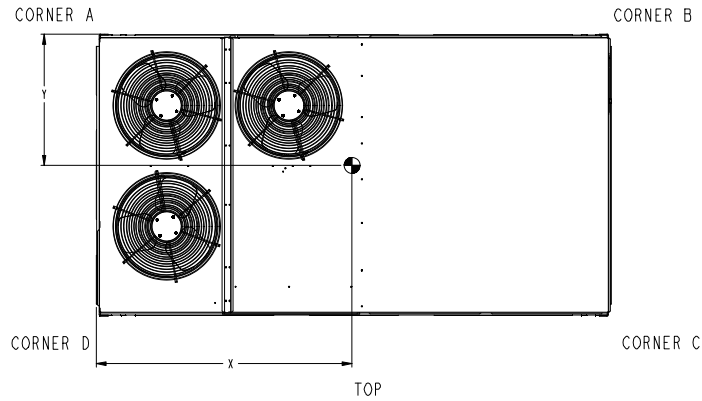
10/03/2023  
02:43PM

UNIT	STD UNIT WEIGHT		CORNER WEIGHT (A)		CORNER WEIGHT (B)		CORNER WEIGHT (C)		CORNER WEIGHT (D)		C.G.		
	LBS.	KG.	LBS.	KG.	LBS.	KG.	LBS.	KG.	LBS.	KG.	X	Y	Z
50FCQ-14	1250	567	350	159	338	153	277	125	286	130	57 (1448)	28 1/2 (724)	24 (610)

STANDARD UNIT WEIGHT IS WITHOUT ELECTRIC HEAT & WITHOUT PACKAGING.  
FOR OPTIONS & ACCESSORIES, REFER TO THE PRODUCT DATA CATALOG.

THIS DOCUMENT IS THE PROPERTY OF CARRIER CORPORATION AND IS DELIVERED UPON THE EXPRESS CONDITION THAT THE CONTENTS WILL NOT BE DISCLOSED OR USED WITHOUT CARRIER CORPORATION'S WRITTEN CONSENT.

SUBMISSION OF THESE DRAWINGS OR DOCUMENTS DOES NOT CONSTITUTE PART PERFORMANCE OR ACCEPTANCE OF CONTRACT.



## HORIZONTAL ECONOMIZER

ITC CLASSIFICATION U. S. ECCN: NSR	SHEET 2 OF 2	DATE 5/4/22	SUPERCEDES -	50FCQ 14 SINGLE ZONE ELECTRICAL HEAT PUMP	50TM002592	REV -
---------------------------------------	-----------------	----------------	-----------------	--	------------	----------

## Performance Summary For UNIT - 1,2

Project: 2141 Irvine Ca  
Prepared By:

10/03/2023  
02:43PM

### Part Number:50FCQM14A3A6-6U0A0

ARI EER:.....10.60  
IEER:.....15.0

#### Base Unit Dimensions

Unit Length:.....115.9 in  
Unit Width:.....63.4 in  
Unit Height:.....57.4 in  
Base Unit Weight (Does not include any accessories):.....1250 lb

#### Unit

Unit Voltage-Phase-Hertz:.....460-3-60  
Air Discharge:.....Vertical  
Fan Drive Type:.....Vane Axial  
Actual Airflow:.....5000 CFM  
Site Altitude:.....0 ft

#### Cooling Performance

Condenser Entering Air DB:.....95.0 F  
Evaporator Entering Air DB:.....80.0 F  
Evaporator Entering Air WB:.....67.0 F  
Entering Air Enthalpy:.....31.44 BTU/lb  
Evaporator Leaving Air DB:.....60.0 F  
Evaporator Leaving Air WB:.....57.7 F  
Evaporator Leaving Air Enthalpy:.....24.83 BTU/lb  
Gross Cooling Capacity:.....148.79 MBH  
Gross Sensible Capacity:.....108.05 MBH  
Compressor Power Input:.....11.25 kW  
Coil Bypass Factor:.....0.094

#### Heating Performance

Outdoor Ambient Temperature:.....47.0 F  
Entering Air Indoor Coil DB:.....70.0 F  
Leaving Air Indoor Coil DB:.....93.9 F  
Total Heating Capacity:.....128.90 MBH  
Integrated Heating Capacity:.....128.90 MBH  
Heating Power Input:.....10.81 kW  
High Temperature COP:.....3.30  
Low Temperature COP:.....2.30

#### Supply Fan

External Static Pressure:.....1.00 in wg  
Options / Accessories Static Pressure  
Economizer:.....0.32 in wg  
Application External Static (ESP + Unit Opts/Acc.):.....1.32 in wg  
Fan RPM:.....1657  
Fan Power:.....2.33 BHP  
NOTE:.....Selected IFM RPM Range: 947 - 2200

Selection includes construction throwaway filter into the base fan curve. This filter is not MERV Rated.

#### Electrical Data

Voltage Range:.....414 - 506  
Compressor #1 RLA:.....7.7  
Compressor #1 LRA:.....60  
Compressor #2 RLA:.....7.7  
Compressor #2 LRA:.....60  
Indoor Fan Motor Type:.....HIGH  
Indoor Fan Motor FLA (Total):.....5.6

## Performance Summary For UNIT - 1,2

Project: 2141 Irvine Ca  
Prepared By:

10/03/2023  
02:43PM

Power Supply MCA:.....	<b>26</b>
Power Supply MOCP (Fuse or HACR):.....	<b>30</b>
Disconnect Size FLA:.....	<b>27</b>
Disconnect Size LRA:.....	<b>134</b>
Electrical Convenience Outlet:.....	<b>None</b>
Outdoor Fan [Qty / FLA (ea)]:.....	<b>3 / 0.8</b>

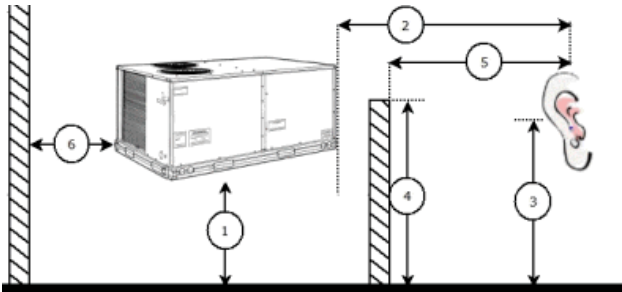
**Control Panel SCCR: 5kA RMS at Rated Symmetrical Voltage**

**Acoustics**

Sound Power Levels, db re 10E-12 Watts

	Discharge	Inlet	Outdoor
63 Hz	89.9	84.3	89.3
125 Hz	84.0	78.1	85.2
250 Hz	80.3	73.2	80.3
500 Hz	77.6	70.0	78.0
1000 Hz	78.6	69.7	77.0
2000 Hz	74.6	63.6	74.4
4000 Hz	69.1	54.3	73.7
8000 Hz	60.8	47.7	68.9
A-Weighted	82.4	73.6	83.0

**Advanced Acoustics**



**Advanced Acoustics Parameters**

- 1. Unit height above ground:.....**30.0** ft
- 2. Horizontal distance from unit to receiver:.....**50.0** ft
- 3. Receiver height above ground:.....**5.7** ft
- 4. Height of obstruction:.....**0.0** ft
- 5. Horizontal distance from obstruction to receiver:.....**0.0** ft
- 6. Horizontal distance from unit to obstruction:.....**0.0** ft

**Detailed Acoustics Information**

Octave Band Center Freq. Hz	63	125	250	500	1k	2k	4k	8k	Overall
A	89.3	85.2	80.3	78.0	77.0	74.4	73.7	68.9	91.6 Lw
B	63.1	69.1	71.7	74.8	77.0	75.6	74.7	67.8	82.5 LwA
C	56.9	52.8	47.9	45.6	44.6	42.0	41.3	36.5	59.2 Lp
D	30.7	36.7	39.3	42.4	44.6	43.2	42.3	35.4	50.1 LpA

**Legend**

A Sound Power Levels at Unit's Acoustic Center, Lw

# Performance Summary For UNIT - 1,2

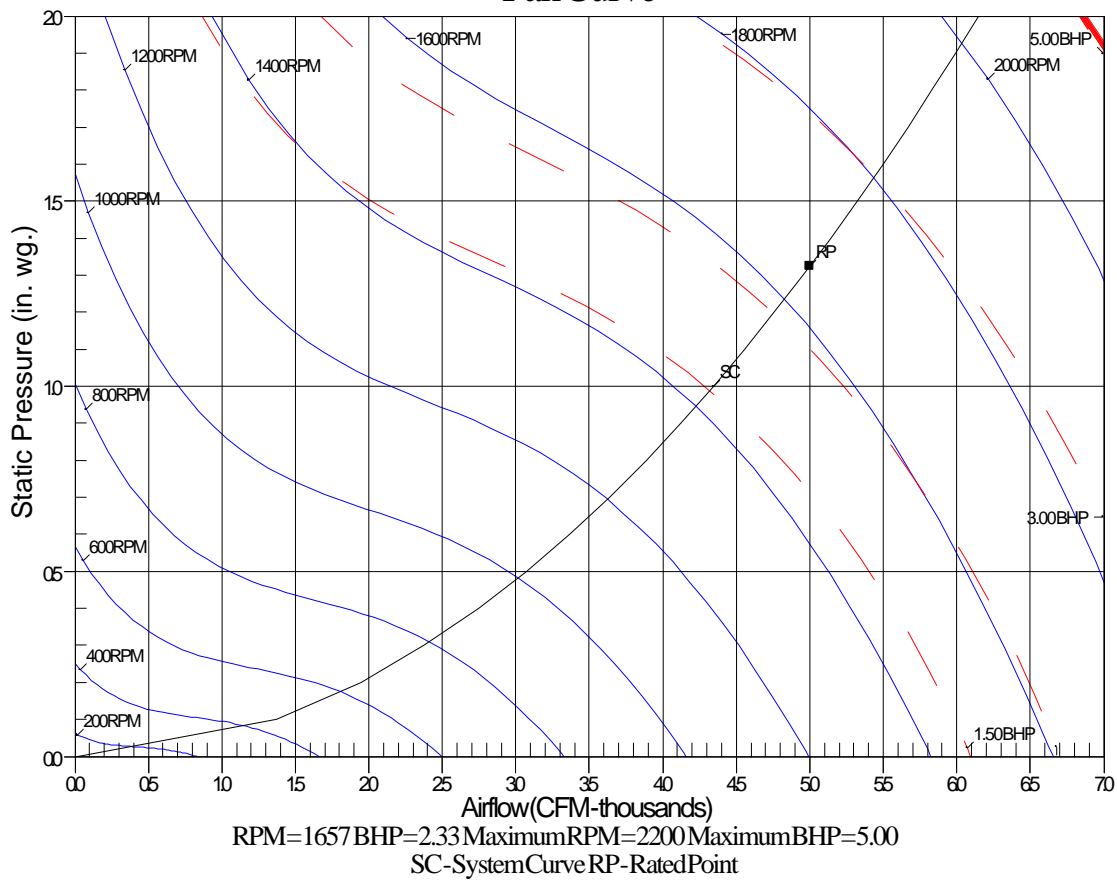
Project: 2141 Irvine Ca  
Prepared By:

10/03/2023  
02:43PM

- B A-Weighted Sound Power Levels at Unit's Acoustic Center, LwA
- C Sound Pressure Levels at Specific Distance from Unit, Lp
- D A-Weighted Sound Pressure Levels at Specific Distance from Unit, LpA

Calculation methods used in this program are patterned after the ASHRAE Guide; other ASHRAE Publications and the AHRI Acoustical Standards. While a very significant effort has been made to insure the technical accuracy of this program, it is assumed that the user is knowledgeable in the art of system sound estimation and is aware of the tolerances involved in real world acoustical estimation. This program makes certain assumptions as to the dominant sound sources and sound paths which may not always be appropriate to the real system being estimated. Because of this, no assurances can be offered that this software will always generate an accurate sound prediction from user supplied input data. If in doubt about the estimation of expected sound levels in a space, an Acoustical Engineer or a person with sound prediction expertise should be consulted.

## Fan Curve



**Unit - 3,4,5**

Project: 2141 Irvine Ca  
Prepared By:

10/03/2023  
02:43PM

**Unit - 3,4,5**

**Tag Cover Sheet  
Unit Report  
Certified Drawing  
Performance Report**

## Unit Report For Unit - 3,4,5

Project: 2141 Irvine Ca  
Prepared By:

10/03/2023  
02:43PM

### Unit Parameters

Unit Model:.....**50FCQM24A3A6-6U0A0**  
 Unit Size:.....**24 (20.0 Tons)**  
 Volts-Phase-Hertz:.....**460-3-60**  
 Heating Type:.....**Heat Pump**  
 Heat Control:.....**Two-Stage Cooling / One Circuit**  
 Duct Cfg:.....**Vertical Supply / Vertical Return**

### Dimensions (ft. in.) & Weight (lb.) \*\*\*

Unit Length:.....**11' 9.5"**  
 Unit Width:.....**7' 2.375"**  
 Unit Height:.....**4' 1.375"**

\*\*\* Weights and Dimensions are approximate. Weight does not include roof curbs, unit packaging, field installed accessories or factory installed options. Approximate dimensions are provided primarily for shipping purposes. For exact dimensions and weights, refer to appropriate product data catalog.

**Base Unit Weight (Does not include any accessories):**  
**2125.....lb**

### Lines and Filters

Return Air Filter Type:.....**Throwaway**  
 Return Air Filter Quantity:.....**9**  
 Return Air Filter Size:.....**20 x 25 x2**

**Selection includes construction throwaway filter into the base fan curve.**

### Unit Configuration

High Static Motor - Vert Supply  
 Al/Cu - Al/Cu  
 Electromechanical Controls w/W7220 Econo Controller  
 Temp Ultra Low Leak Economizer w/Baro Relief  
 Standard Packaging

### Warranty Information

1-Year parts (STD.)  
 5-Year Compressor (std.)

No optional warranties were selected.

**NOTE: Please see Warranty Catalog 500-089 for explanation of policies and ordering methods.**

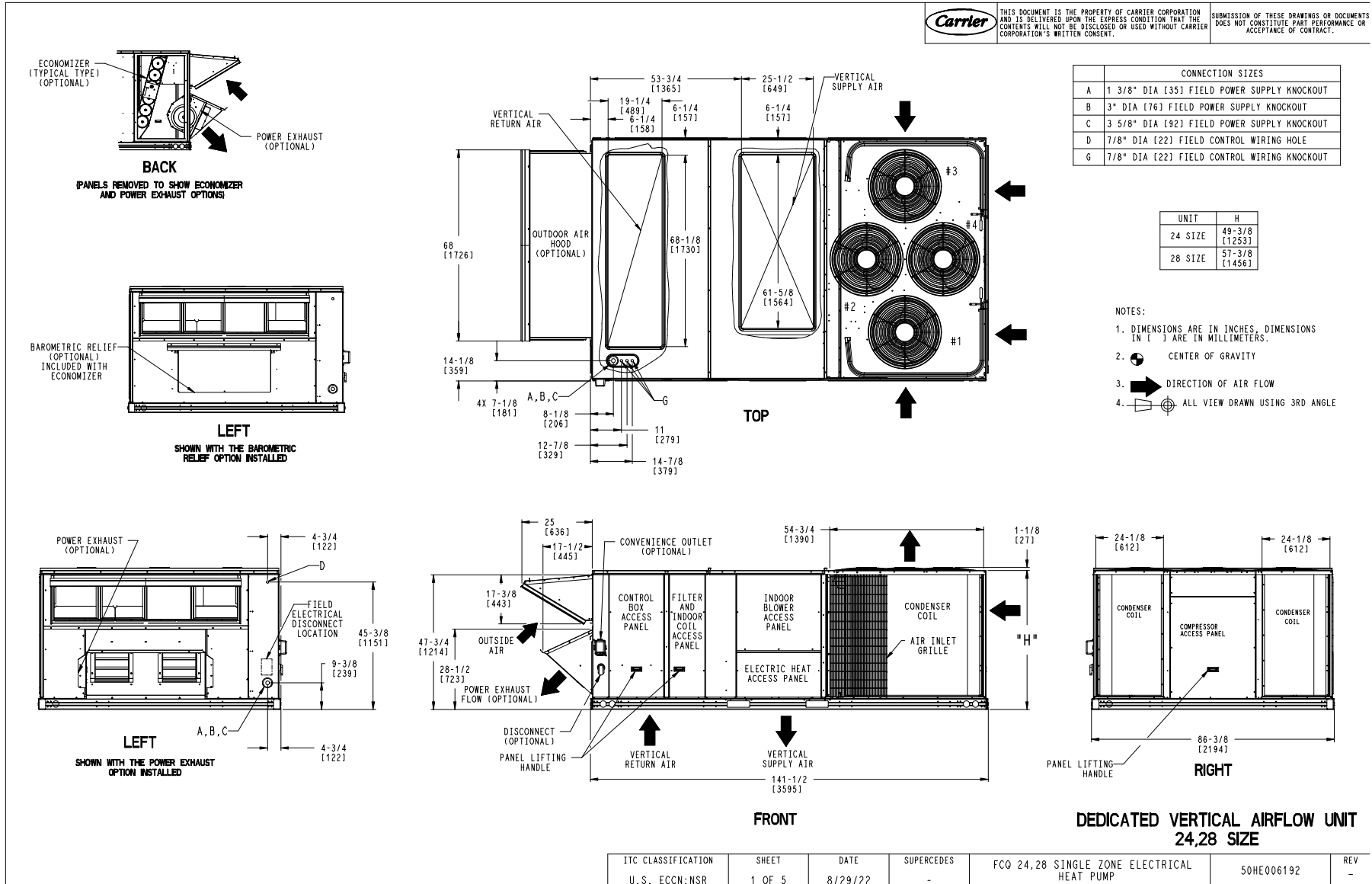
### Ordering Information

Part Number	Description	Quantity
50FCQM24A3A6-6U0A0	Rooftop Unit	1
	Base Unit	
	High Static Motor - Vert Supply	
	Electromechanical control, Ultra LOW LEAK EconoMi\$er X, temperature economizer, barometric relief an	

# Certified Drawing for Unit - 3,4,5

Project: 2141 Irvine Ca  
Prepared By:

10/03/2023  
02:43PM



# Certified Drawing for Unit - 3,4,5

Project: 2141 Irvine Ca  
Prepared By:

10/03/2023  
02:43PM

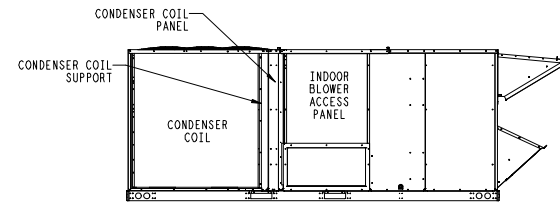
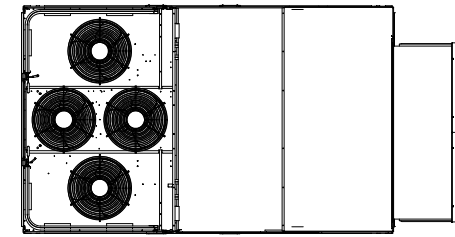
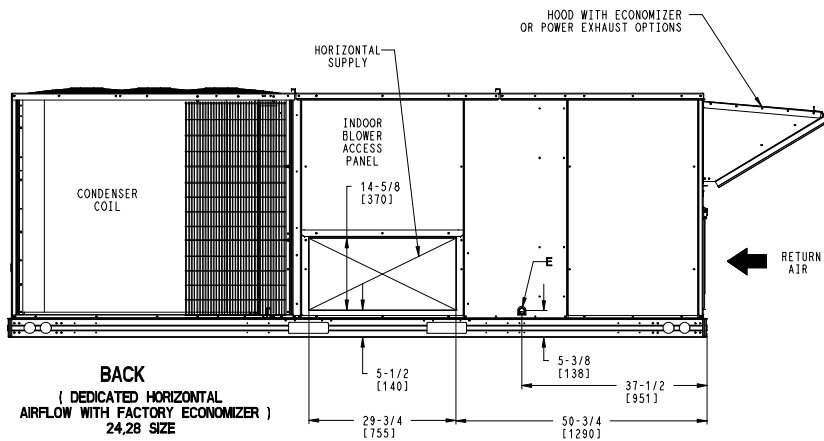
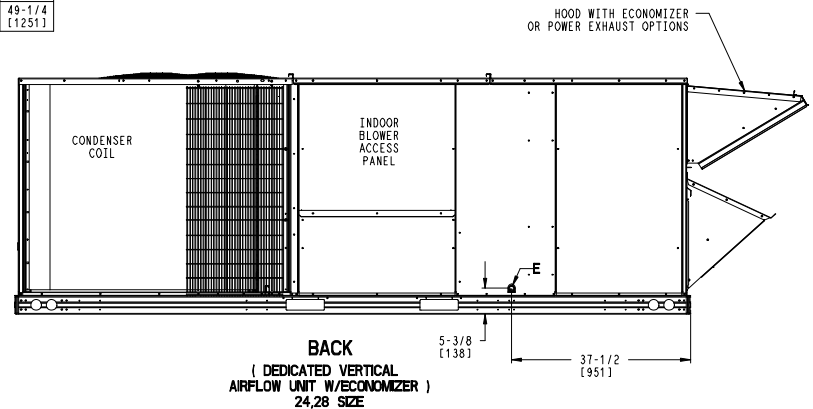
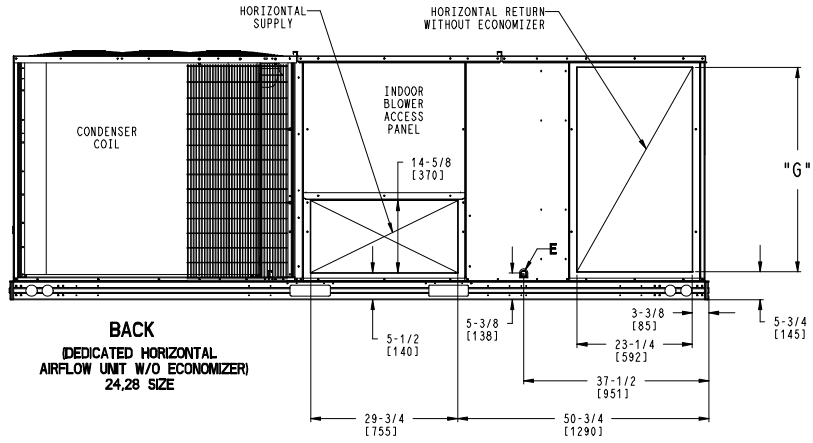
CONNECTION SIZES	
E	3/4"-14 NPT CONDENSATE DRAIN

**Carrier**

THIS DOCUMENT IS THE PROPERTY OF CARRIER CORPORATION AND IS DELIVERED UPON THE EXPRESS CONDITION THAT THE CONTENTS WILL NOT BE DISCLOSED OR USED WITHOUT CARRIER CORPORATION'S WRITTEN CONSENT.

SUBMISSION OF THESE DRAWINGS OR DOCUMENTS DOES NOT CONSTITUTE PART PERFORMANCE OR ACCEPTANCE OF CONTRACT.

UNIT	G
24 SIZE	41-3/8 [1049]
28 SIZE	49-1/4 [1251]



ITC CLASSIFICATION	SHEET	DATE	SUPERCEDES	FCO 24,28 SINGLE ZONE ELECTRICAL HEAT PUMP	50HE006192	REV
U. S. ECCN: NSR	3 OF 5	8/29/22	-			-

# Certified Drawing for Unit - 3,4,5

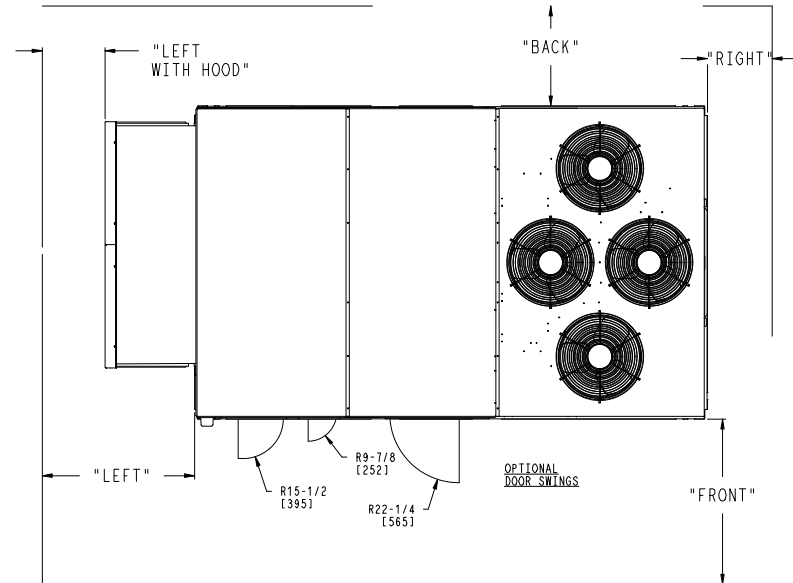
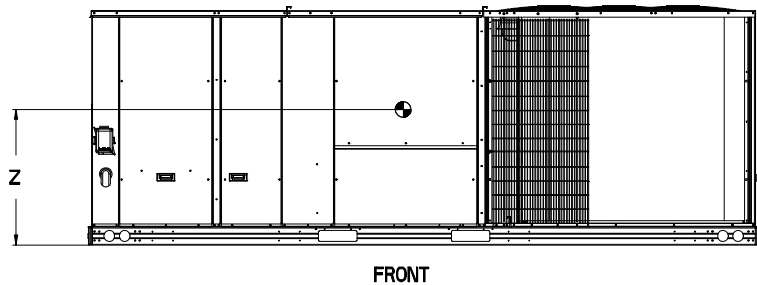
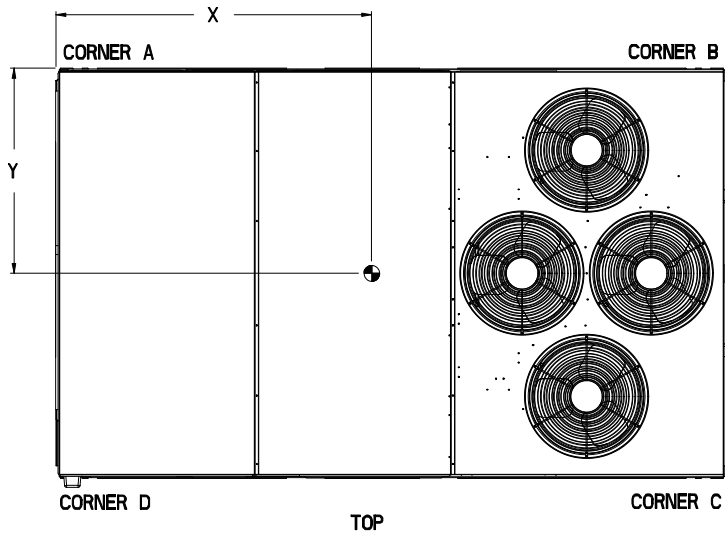
Project: 2141 Irvine Ca  
Prepared By:

10/03/2023  
02:43PM

UNIT	STD. UNIT WEIGHT *		CORNER WEIGHT (A)		CORNER WEIGHT (B)		CORNER WEIGHT (C)		CORNER WEIGHT (D)		C.G.		
	LBS.	KG.	LBS.	KG.	LBS.	KG.	LBS.	KG.	LBS.	KG.	X	Y	Z
FCQ-24	2125	964	485	220	570	259	579	262	492	223	76 1/2 [1943]	43 1/2 [1105]	16 1/2 [419]
FCQ-28	2250	1021	493	224	588	267	636	289	533	242	77 [1956]	44 7/8 [1140]	19 [483]

**Carrier** THIS DOCUMENT IS THE PROPERTY OF CARRIER CORPORATION AND IS DELIVERED UPON THE EXPRESS CONDITION THAT THE CONTENTS WILL NOT BE DISCLOSED OR USED WITHOUT CARRIER CORPORATION'S WRITTEN CONSENT. SUBMISSION OF THESE DRAWINGS OR DOCUMENTS DOES NOT CONSTITUTE PART PERFORMANCE OR ACCEPTANCE OF CONTRACT.

\* STANDARD UNIT WEIGHT IS WITHOUT ELECTRIC HEAT AND WITHOUT PACKAGING. FOR OTHER OPTIONS AND ACCESSORIES, REFER TO THE PRODUCT DATA CATALOG.



**NOTES:**

- CLEARANCE ABOVE THE UNIT TO BE 72"
- FOR ALL MINIMUM CLEARANCES LOCAL CODES OR JURISDICTIONS MAY PREVAIL.

SURFACE	CLEARANCE		OPERATING CLEARANCE
	SERVICE WITH CONDUCTIVE BARRIER	SERVICE WITH NONCONDUCTIVE BARRIER	
FRONT	48 [1219mm]	36 [914mm]	18 [457mm]
LEFT	48 [1219mm]	42 [1067mm]	18 [457mm]
BACK	42 [1067mm]	36 [914mm]	18 [457mm]
LEFT WITH HOOD	36 [914mm]	36 [914mm]	18 [457mm]
RIGHT	36 [914mm]	36 [914mm]	18 [457mm]
TOP	72 [1829mm]	72 [1829mm]	72 [1829mm]

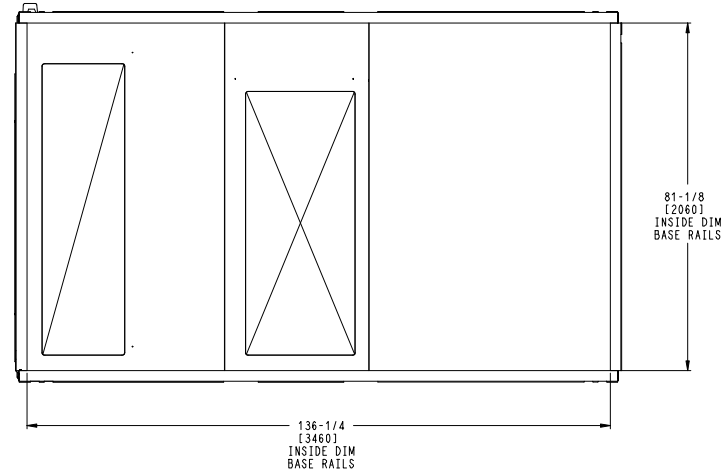
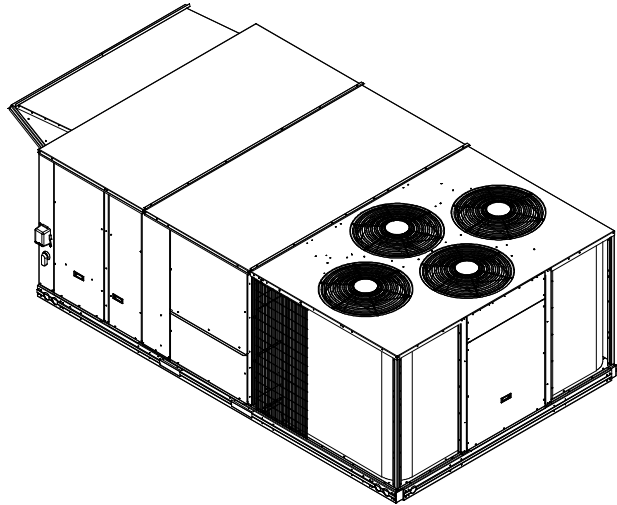
ITC CLASSIFICATION	SHEET	DATE	SUPERCEDES	FCQ 24,28 SINGLE ZONE ELECTRICAL HEAT PUMP	50HE006192	REV
U.S. ECCN: NSR	4 OF 5	8/29/22	-			-

# Certified Drawing for Unit - 3,4,5

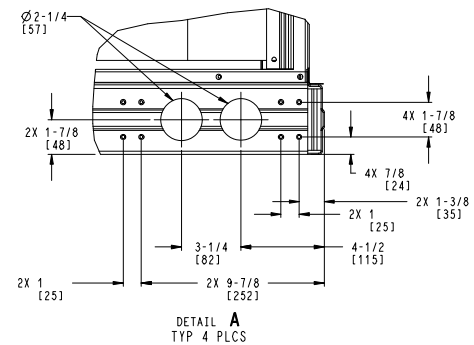
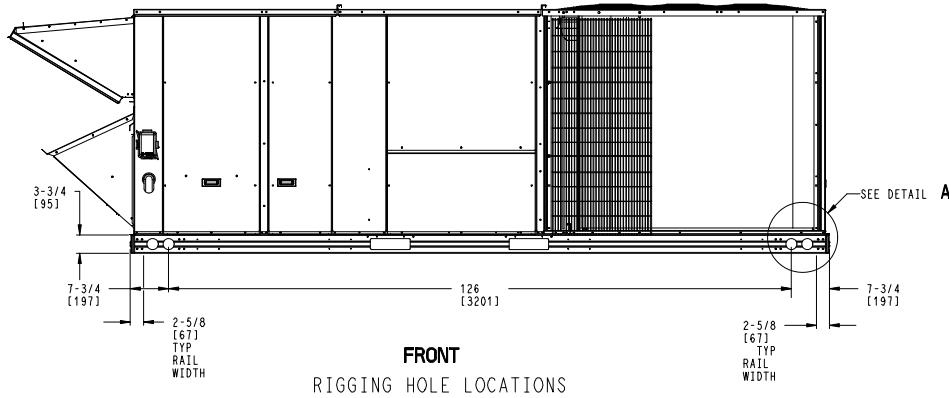
Project: 2141 Irvine Ca  
Prepared By:

10/03/2023  
02:43PM

	THIS DOCUMENT IS THE PROPERTY OF CARRIER CORPORATION AND IS DELIVERED UPON THE EXPRESS CONDITION THAT THE CONTENTS WILL NOT BE DISCLOSED OR USED WITHOUT CARRIER CORPORATION'S WRITTEN CONSENT.	SUBMISSION OF THESE DRAWINGS OR DOCUMENTS DOES NOT CONSTITUTE PART PERFORMANCE OR ACCEPTANCE OF CONTRACT.
---	---	---



**BOTTOM**  
INSIDE BASERAIL DIMENSIONS



ITC CLASSIFICATION	SHEET	DATE	SUPERCEDES	FCO 24,28 SINGLE ZONE ELECTRICAL HEAT PUMP	50HE006192	REV
U. S. ECCN: NSR	5 OF 5	8/29/22	-			-

## Performance Summary For Unit - 3,4,5

Project: 2141 Irvine Ca  
Prepared By:

10/03/2023  
02:43PM

### Part Number:50FCQM24A3A6-6U0A0

ARI EER:..... 9.80  
IEER:..... 14.0

#### Base Unit Dimensions

Unit Length:..... 141.5 in  
Unit Width:..... 86.4 in  
Unit Height:..... 49.4 in  
Base Unit Weight (Does not include any accessories):..... 2125 lb

#### Unit

Unit Voltage-Phase-Hertz:..... 460-3-60  
Air Discharge:..... Vertical  
Fan Drive Type:..... Vane Axial  
Actual Airflow:..... 8000 CFM  
Site Altitude:..... 0 ft

#### Cooling Performance

Condenser Entering Air DB:..... 95.0 F  
Evaporator Entering Air DB:..... 80.0 F  
Evaporator Entering Air WB:..... 67.0 F  
Entering Air Enthalpy:..... 31.44 BTU/lb  
Evaporator Leaving Air DB:..... 59.1 F  
Evaporator Leaving Air WB:..... 57.6 F  
Evaporator Leaving Air Enthalpy:..... 24.78 BTU/lb  
Gross Cooling Capacity:..... 239.67 MBH  
Gross Sensible Capacity:..... 180.23 MBH  
Compressor Power Input:..... 19.69 kW  
Coil Bypass Factor:..... 0.069

#### Heating Performance

Outdoor Ambient Temperature:..... 47.0 F  
Entering Air Indoor Coil DB:..... 70.0 F  
Leaving Air Indoor Coil DB:..... 97.9 F  
Total Heating Capacity:..... 241.10 MBH  
Integrated Heating Capacity:..... 241.10 MBH  
Heating Power Input:..... 19.43 kW  
High Temperature COP:..... 3.30  
Low Temperature COP:..... 2.30

#### Supply Fan

External Static Pressure:..... 1.00 in wg  
Options / Accessories Static Pressure  
Economizer:..... 0.08 in wg  
Application External Static (ESP + Unit Opts/Acc.):..... 1.08 in wg  
Fan RPM:..... 1757  
Fan Power:..... 3.86 BHP  
NOTE:..... Selected IFM RPM Range: 250 - 2200

Selection includes construction throwaway filter into the base fan curve. This filter is not MERV Rated.

#### Electrical Data

Voltage Range:..... 414 - 506  
Compressor #1 RLA:..... 16  
Compressor #1 LRA:..... 140  
Compressor #2 RLA:..... 16  
Compressor #2 LRA:..... 140  
Indoor Fan Motor Type:..... HIGH  
Indoor Fan Motor FLA (Total):..... 5.6

## Performance Summary For Unit - 3,4,5

Project: 2141 Irvine Ca  
Prepared By:

10/03/2023  
02:43PM

Power Supply MCA:.....	<b>51</b>
Power Supply MOCP (Fuse or HACR):.....	<b>60</b>
Disconnect Size FLA:.....	<b>54</b>
Disconnect Size LRA:.....	<b>304</b>
Electrical Convenience Outlet:.....	<b>None</b>
Outdoor Fan [Qty / FLA (ea)]:.....	<b>4 / 0.9</b>

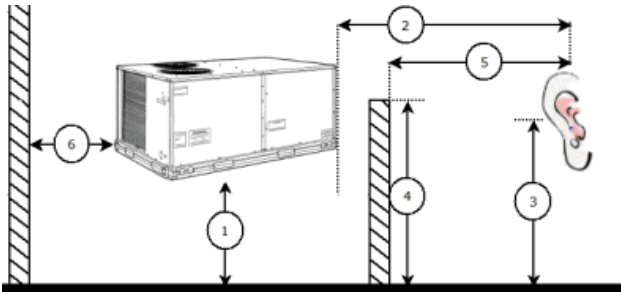
**Control Panel SCCR: 5kA RMS at Rated Symmetrical Voltage**

### Acoustics

Sound Power Levels, db re 10E-12 Watts

	Discharge	Inlet	Outdoor
63 Hz	90.6	78.9	97.1
125 Hz	89.6	74.7	88.3
250 Hz	89.2	69.4	84.4
500 Hz	81.4	66.2	83.3
1000 Hz	80.5	66.3	80.7
2000 Hz	77.7	60.4	77.4
4000 Hz	73.1	51.4	73.4
8000 Hz	62.9	42.6	67.3
A-Weighted	86.2	70.0	85.9

### Advanced Acoustics



#### Advanced Acoustics Parameters

- 1. Unit height above ground:.....**30.0** ft
- 2. Horizontal distance from unit to receiver:.....**50.0** ft
- 3. Receiver height above ground:.....**5.7** ft
- 4. Height of obstruction:.....**0.0** ft
- 5. Horizontal distance from obstruction to receiver:.....**0.0** ft
- 6. Horizontal distance from unit to obstruction:.....**0.0** ft

### Detailed Acoustics Information

Octave Band Center Freq. Hz	63	125	250	500	1k	2k	4k	8k	Overall
A	97.1	88.3	84.4	83.3	80.7	77.4	73.4	67.3	98.1 Lw
B	70.9	72.2	75.8	80.1	80.7	78.6	74.4	66.2	85.9 LwA
C	64.7	55.9	52.0	50.9	48.3	45.0	41.0	34.9	65.7 Lp
D	38.5	39.8	43.4	47.7	48.3	46.2	42.0	33.8	53.5 LpA

#### Legend

A Sound Power Levels at Unit's Acoustic Center, Lw

# Performance Summary For Unit - 3,4,5

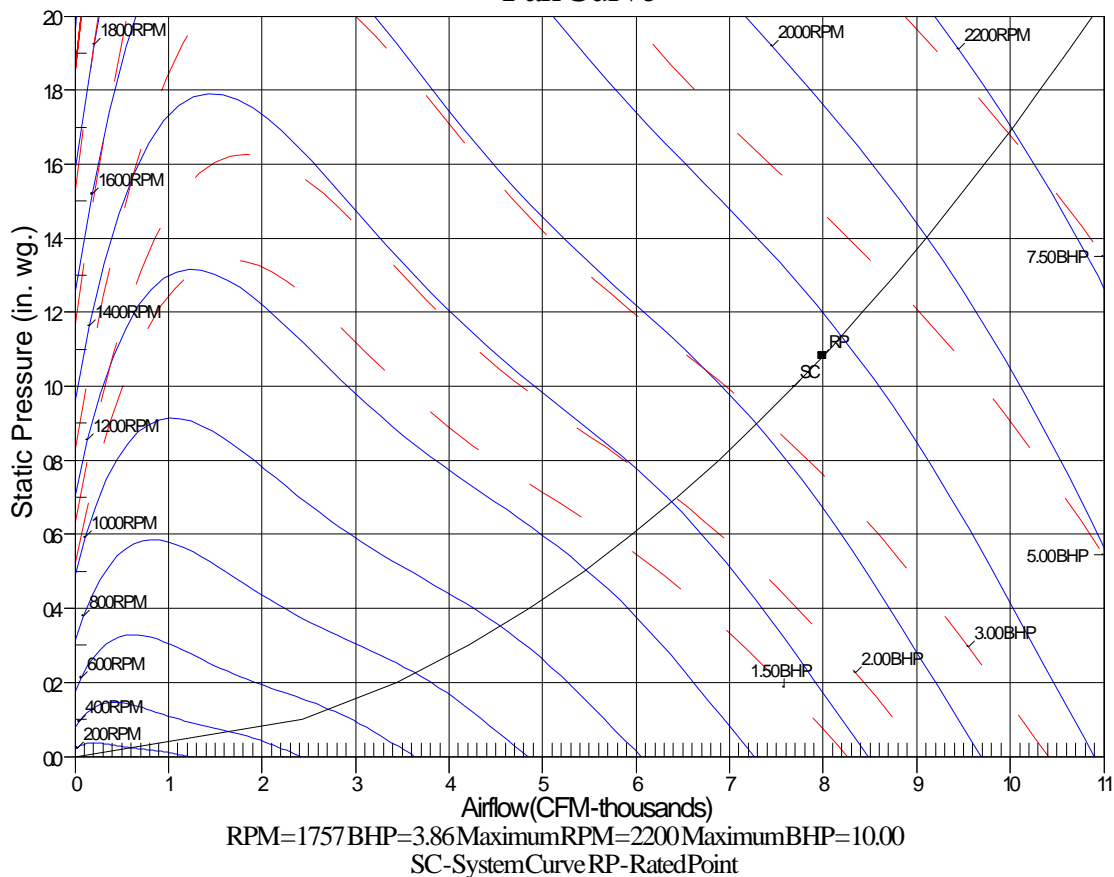
Project: 2141 Irvine Ca  
Prepared By:

10/03/2023  
02:43PM

- B A-Weighted Sound Power Levels at Unit's Acoustic Center, LwA
- C Sound Pressure Levels at Specific Distance from Unit, Lp
- D A-Weighted Sound Pressure Levels at Specific Distance from Unit, LpA

Calculation methods used in this program are patterned after the ASHRAE Guide; other ASHRAE Publications and the AHRI Acoustical Standards. While a very significant effort has been made to insure the technical accuracy of this program, it is assumed that the user is knowledgeable in the art of system sound estimation and is aware of the tolerances involved in real world acoustical estimation. This program makes certain assumptions as to the dominant sound sources and sound paths which may not always be appropriate to the real system being estimated. Because of this, no assurances can be offered that this software will always generate an accurate sound prediction from user supplied input data. If in doubt about the estimation of expected sound levels in a space, an Acoustical Engineer or a person with sound prediction expertise should be consulted.

## Fan Curve



## Unit - 6

Project: 2141 Irvine Ca  
Prepared By:

10/03/2023  
02:43PM

## Unit - 6

### Tag Cover Sheet Unit Report Certified Drawing Performance Report

## Unit Report For Unit - 6

Project: 2141 Irvine Ca  
Prepared By:

10/03/2023  
02:43PM

### Unit Parameters

Unit Model:.....**50FCQA06A2A6-6U0A0**  
 Unit Size:.....**06 (5 Tons)**  
 Volts-Phase-Hertz:.....**460-3-60**  
 Heating Type:.....**Heat Pump**  
 Heat Control:.....**Single Stage Compressor Models**  
 Duct Cfg:.....**Vertical Supply / Vertical Return**

### Dimensions (ft. in.) & Weight (lb.) \*\*\*

Unit Length:.....**6' 2.375"**  
 Unit Width:.....**3' 10.625"**  
 Unit Height:.....**3' 5.375"**  
**Total Operating Weight:.....619 lb**

\*\*\* Weights and Dimensions are approximate. Weight does not include unit packaging. Approximate dimensions are provided primarily for shipping purposes. For exact dimensions and weights, refer to appropriate product data catalog.

### Lines and Filters

Return Air Filter Type:.....**Throwaway**  
 Return Air Filter Quantity:.....**4**  
 Return Air Filter Size:.....**16 x 16 x 2**

**Selection includes construction throwaway filter into the base fan curve.**

### Unit Configuration

Direct Drive - EcoBlue - Medium Static  
 Al/Cu - Al/Cu  
 Electromechanical Controls w/W7220 Econo Controller  
 Temp Ultra Low Leak Economizer w/Baro Relief  
 Standard Packaging

### Warranty Information

5-Year compressor parts (STD.)  
 1-Year parts (STD.)

No optional warranties were selected.

**NOTE: Please see Warranty Catalog 500-089 for explanation of policies and ordering methods.**

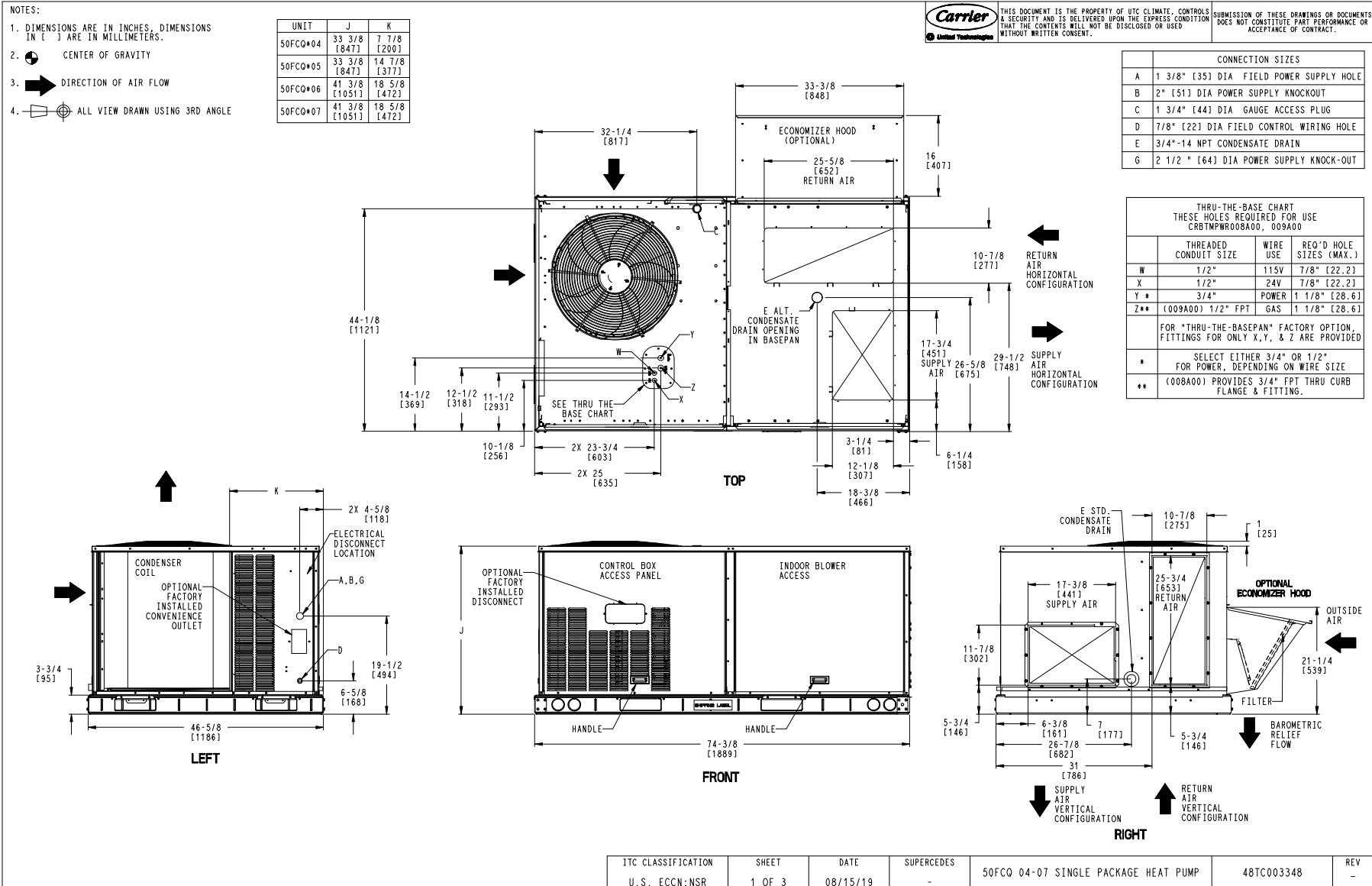
### Ordering Information

Part Number	Description	Quantity
50FCQA06A2A6-6U0A0	Rooftop Unit	1
	Base Unit	
	Direct Drive - EcoBlue - Medium Static	
	Ultra Low leak Temp Econo X with baro relief, W7220 control. Meets Calif. Title 24 FDD & Leak Rates	

# Certified Drawing for Unit - 6

Project: 2141 Irvine Ca  
Prepared By:

10/03/2023  
02:43PM



ITC CLASSIFICATION	SHEET	DATE	SUPERCEDES	50FC0 04-07 SINGLE PACKAGE HEAT PUMP	48TC003348	REV
U.S. ECCN:NSR	1 OF 3	08/15/19	-			-

# Certified Drawing for Unit - 6

Project: 2141 Irvine Ca  
Prepared By:

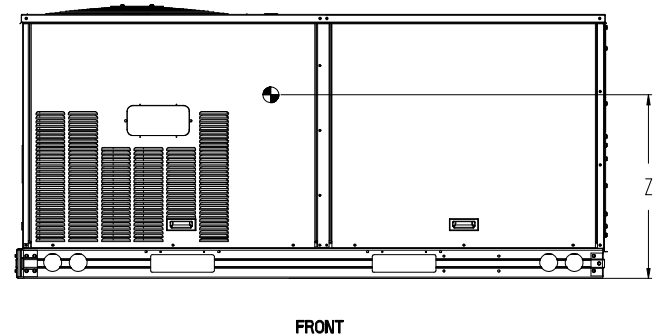
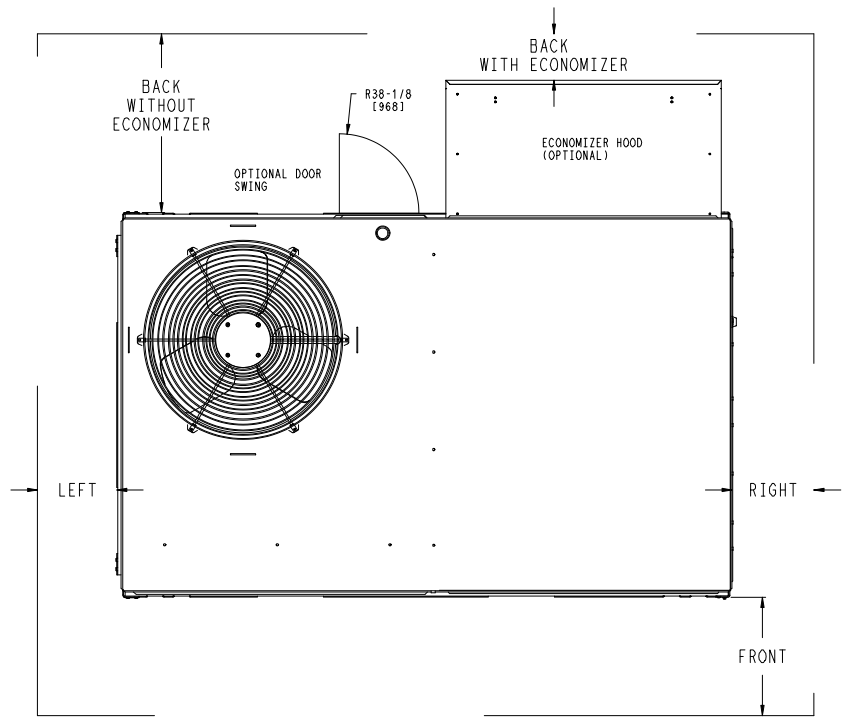
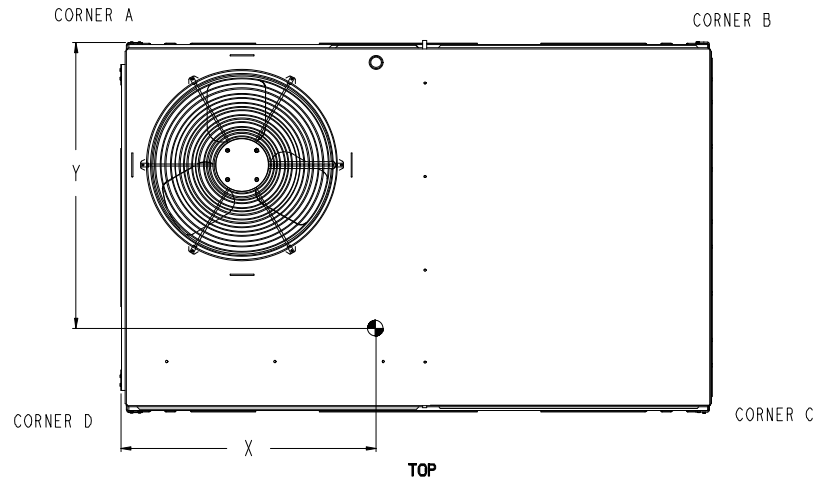
10/03/2023  
02:43PM

UNIT	STD. UNIT WEIGHT*		CORNER WEIGHT (A)		CORNER WEIGHT (B)		CORNER WEIGHT (C)		CORNER WEIGHT (D)		C.G.		HEIGHT
	LBS.	KG.	LBS.	KG.	LBS.	KG.	LBS.	KG.	LBS.	KG.	X	Y	Z
50FCQ*04	467	212	126	57	118	53	108	49	115	52	36 [914]	22 3/8 [568]	16 1/8 [410]
50FCQ*05	473	215	127	58	119	54	110	50	117	53	36 [914]	22 3/8 [568]	16 1/8 [410]
50FCQ*06	584	265	160	72	145	66	133	60	146	66	35 3/8 [898]	22 5/16 [557]	16 1/2 [419]
50FCQ*07	589	267	161	73	146	66	134	61	147	67	35 3/8 [898]	22 5/16 [557]	16 1/2 [419]

\* STANDARD UNIT WEIGHT IS WITHOUT ELECTRIC HEAT AND WITHOUT PACKAGING.  
FOR OTHER OPTIONS AND ACCESSORIES, REFER TO THE PRODUCT DATA CATALOG.

**Carrier**  
United Technologies

THIS DOCUMENT IS THE PROPERTY OF UTC CLIMATE, CONTROLS & SECURITY AND IS DELIVERED UPON THE EXPRESS CONDITION THAT THE CONTENTS WILL NOT BE DISCLOSED OR USED WITHOUT WRITTEN CONSENT. SUBMISSION OF THESE DRAWINGS OR DOCUMENTS DOES NOT CONSTITUTE PART PERFORMANCE OR ACCEPTANCE OF CONTRACT.



NOTE:  
1. FOR ALL MINIMUM CLEARANCES LOCAL CODES OR JURISDICTIONS MAY PREVAIL.

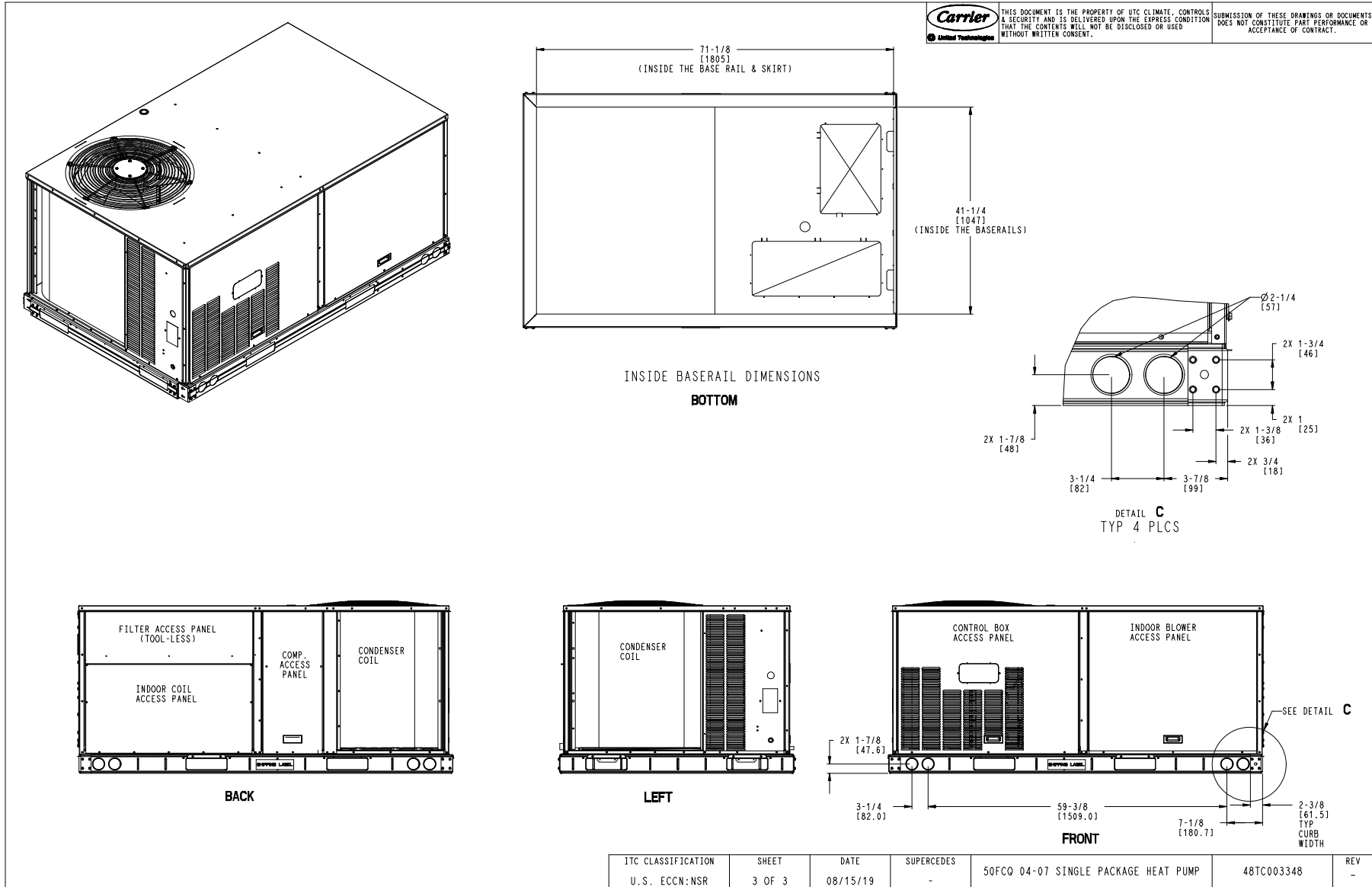
SURFACE	CLEARANCE		OPERATING CLEARANCE
	SERVICE WITH: CONDUCTIVE BARRIER	SERVICE WITH: NONCONDUCTIVE BARRIER	
FRONT	48 [1219mm]	36 [914mm]	18 [457mm]
LEFT	48 [1219mm]	42 [1067mm]	18 [457mm]
BACK W/O ECON	48 [1219mm]	42 [1067mm]	18 [457mm]
BACK W/ECON	36 [914mm]	36 [914mm]	18 [457mm]
RIGHT	36 [914mm]	36 [914mm]	18 [457mm]
TOP	72 [1829mm]	72 [1829mm]	72 [1829mm]

ITC CLASSIFICATION U.S. ECCN:NSR	SHEET 2 OF 3	DATE 08/15/19	SUPERCEDES -	50FCQ 04-07 SINGLE PACKAGE HEAT PUMP	48TC003348	REV -
-------------------------------------	-----------------	------------------	-----------------	--------------------------------------	------------	----------

# Certified Drawing for Unit - 6

Project: 2141 Irvine Ca  
Prepared By:

10/03/2023  
02:43PM



# Performance Summary For Unit - 6

Project: 2141 Irvine Ca  
Prepared By:

10/03/2023  
02:43PM

## Part Number:50FCQA06A2A6-6U0A0

ARI SEER:.....14.30

### Base Unit Dimensions

Unit Length:.....74.4 in  
Unit Width:.....46.6 in  
Unit Height:.....41.4 in

### Operating Weight

Base Unit Weight:.....584 lb  
Temp Ultra Low Leak Economizer w/Baro Relief:.....35 lb  
  
Total Operating Weight:.....619 lb

### Unit

Unit Voltage-Phase-Hertz:.....460-3-60  
Air Discharge:.....Vertical  
Fan Drive Type:.....Vane Axial  
Actual Airflow:.....2000 CFM  
Site Altitude:.....0 ft

### Cooling Performance

Condenser Entering Air DB:.....95.0 F  
Evaporator Entering Air DB:.....80.0 F  
Evaporator Entering Air WB:.....67.0 F  
Entering Air Enthalpy:.....31.44 BTU/lb  
Evaporator Leaving Air DB:.....57.3 F  
Evaporator Leaving Air WB:.....57.3 F  
Evaporator Leaving Air Enthalpy:.....24.56 BTU/lb  
Gross Cooling Capacity:.....61.90 MBH  
Gross Sensible Capacity:.....48.96 MBH  
Compressor Power Input:.....4.19 kW  
Coil Bypass Factor:.....0.027

### Heating Performance

Outdoor Ambient Temperature:.....47.0 F  
Entering Air Indoor Coil DB:.....70.0 F  
Leaving Air Indoor Coil DB:.....96.3 F  
Total Heating Capacity:.....56.80 MBH  
Integrated Heating Capacity:.....56.80 MBH  
Heating Power Input:.....3.77 kW  
High Temperature COP:.....3.80  
Low Temperature COP:.....2.30  
HSPF:.....8.2

### Supply Fan

External Static Pressure:.....1.00 in wg  
Options / Accessories Static Pressure  
Economizer:.....0.12 in wg  
Application External Static (ESP + Unit Opts/Acc.):.....1.12 in wg  
Fan RPM:.....2103  
Fan Power:.....1.00 BHP  
NOTE:.....Selected IFM RPM Range: 239 - 2390

**Selection includes construction throwaway filter into the base fan curve. This filter is not MERV Rated.**

### Electrical Data

Voltage Range:.....414 - 506  
Compressor #1 RLA:.....7.8  
Compressor #1 LRA:.....52

## Performance Summary For Unit - 6

Project: 2141 Irvine Ca  
Prepared By:

10/03/2023  
02:43PM

Indoor Fan Motor Type:.....	<b>MED</b>
Indoor Fan Motor FLA (Total):.....	<b>2.1</b>
Power Supply MCA:.....	<b>13</b>
Power Supply MOCP (Fuse or HACR):.....	<b>20</b>
Disconnect Size FLA:.....	<b>12</b>
Disconnect Size LRA:.....	<b>57</b>
Electrical Convenience Outlet:.....	<b>None</b>
Outdoor Fan [Qty / FLA (ea)]:.....	<b>1 / 0.8</b>

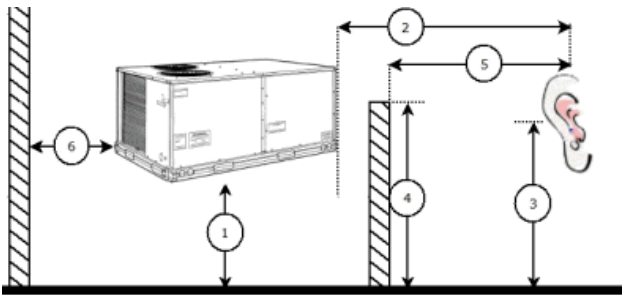
**Control Panel SCCR: 5kA RMS at Rated Symmetrical Voltage**

### Acoustics

Sound Power Levels, db re 10E-12 Watts

	Discharge	Inlet	Outdoor
63 Hz	93.1	91.2	85.6
125 Hz	84.4	80.5	84.7
250 Hz	78.5	72.9	80.5
500 Hz	74.7	67.4	76.0
1000 Hz	71.5	69.2	72.4
2000 Hz	68.6	60.1	68.0
4000 Hz	65.0	53.9	62.8
8000 Hz	60.9	47.5	59.3
A-Weighted	78.1	73.3	79.0

### Advanced Acoustics



#### Advanced Acoustics Parameters

- 1. Unit height above ground:.....**30.0** ft
- 2. Horizontal distance from unit to receiver:.....**50.0** ft
- 3. Receiver height above ground:.....**5.7** ft
- 4. Height of obstruction:.....**0.0** ft
- 5. Horizontal distance from obstruction to receiver:.....**0.0** ft
- 6. Horizontal distance from unit to obstruction:.....**0.0** ft

### Detailed Acoustics Information

Octave Band Center Freq. Hz	63	125	250	500	1k	2k	4k	8k	Overall
A	85.6	84.7	80.5	76.0	72.4	68.0	62.8	59.3	89.2 Lw
B	59.4	68.6	71.9	72.8	72.4	69.2	63.8	58.2	78.5 LwA
C	53.2	52.3	48.1	43.6	40.0	35.6	30.4	26.9	56.8 Lp
D	27.0	36.2	39.5	40.4	40.0	36.8	31.4	25.8	46.1 LpA

# Performance Summary For Unit - 6

Project: 2141 Irvine Ca  
Prepared By:

10/03/2023  
02:43PM

**Legend**

- A Sound Power Levels at Unit's Acoustic Center, Lw
- B A-Weighted Sound Power Levels at Unit's Acoustic Center, LwA
- C Sound Pressure Levels at Specific Distance from Unit, Lp
- D A-Weighted Sound Pressure Levels at Specific Distance from Unit, LpA

Calculation methods used in this program are patterned after the ASHRAE Guide; other ASHRAE Publications and the AHRI Acoustical Standards. While a very significant effort has been made to insure the technical accuracy of this program, it is assumed that the user is knowledgeable in the art of system sound estimation and is aware of the tolerances involved in real world acoustical estimation. This program makes certain assumptions as to the dominant sound sources and sound paths which may not always be appropriate to the real system being estimated. Because of this, no assurances can be offered that this software will always generate an accurate sound prediction from user supplied input data. If in doubt about the estimation of expected sound levels in a space, an Acoustical Engineer or a person with sound prediction expertise should be consulted.

