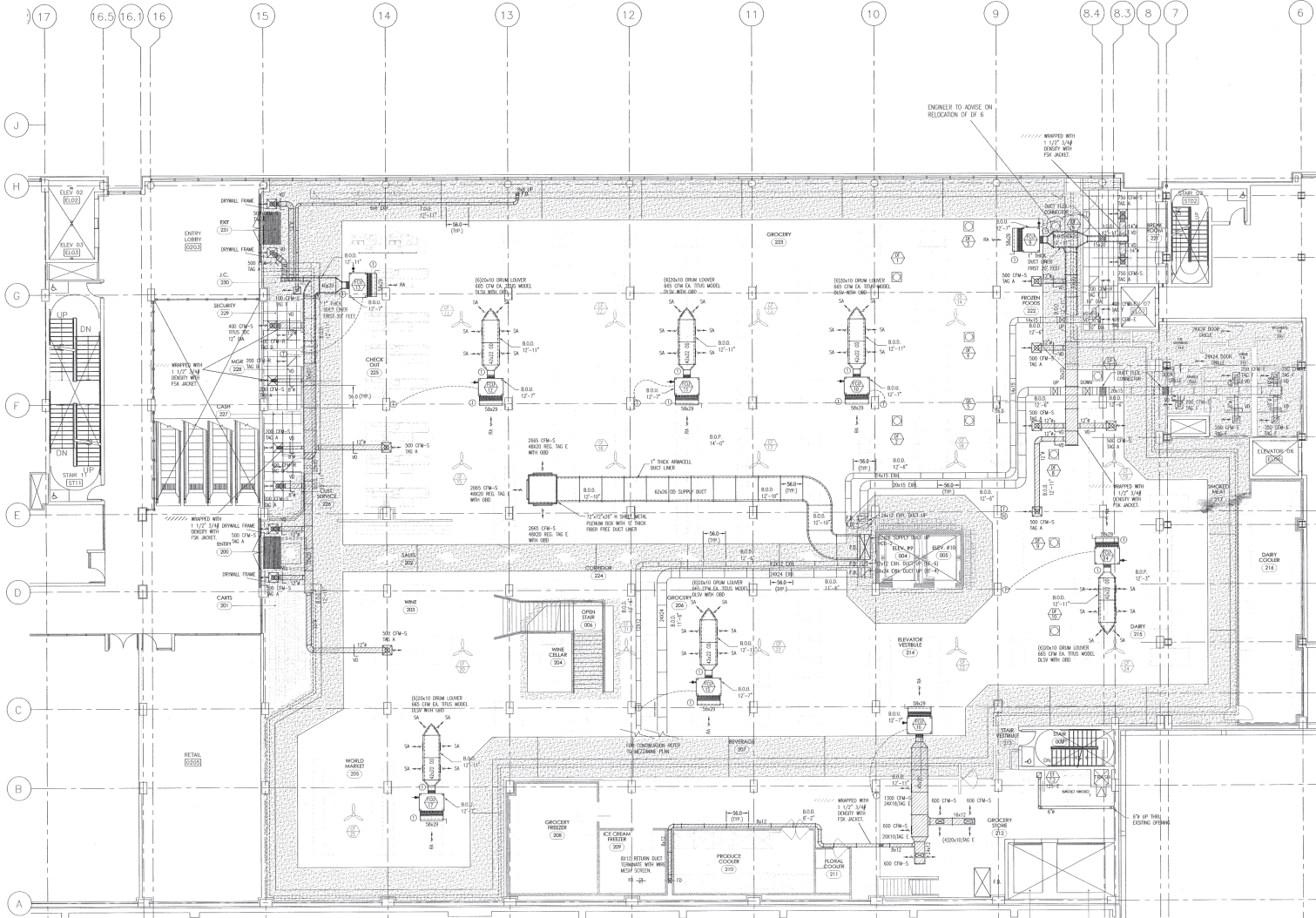
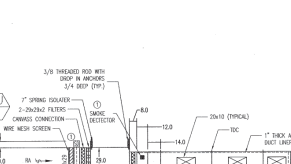
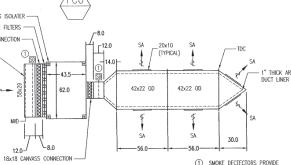
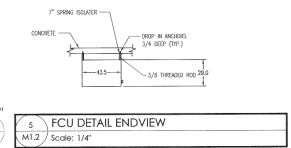
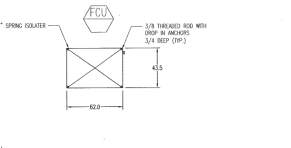
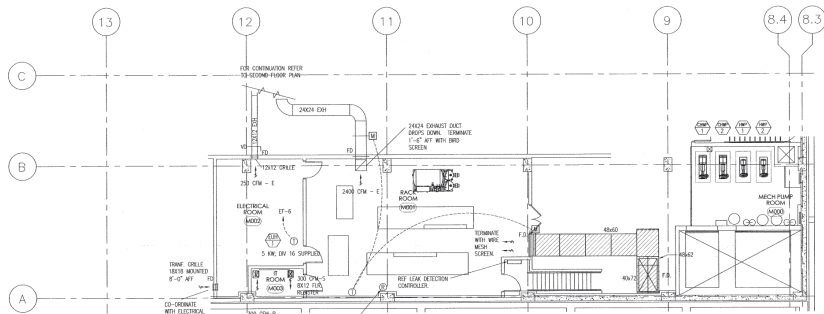
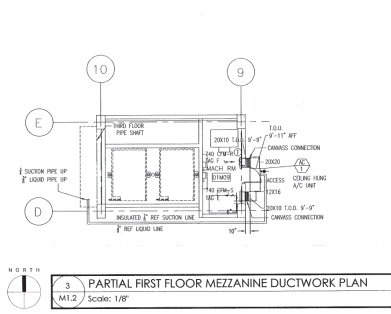


HMAC NOTES

- DUCT TO BE GRD. 7" W.G.
- KITCHEN EXHAUST DUCT TO BE 16 GAUGE BLACK IRON.
- DUCT LINER TO BE 1" THICK ARMACELL. (FCU 3,4,6,7,10,11,12,14,15,17 & HCU 1 & 2.)
- 20' UP STREAM OF FAN TO BE 1" FIBERGLASS DUCT LINER. BALANCE TO BE 1 1/2" 3/4" DENSITY FIBERGLASS BLANKET WITH FSK JACKET (FCU 2,6,9 & 13).
- 1 1/2" 3/4" DENSITY FIBERGLASS BLANKET WITH FSK JACKET (FCU 1,5,8,16 & MALL 1).
- BLACK IRON EXHAUST DUCT TO HAVE 2 LAYERS OF FIRE MASTER DUCTWRAP PER CITY OF CHICAGO CODE.
- NO DUCTWORK, PIPING, PLUMBING, ELECTRICAL AND REFRIGERATION SHALL PENETRATE THROUGH PERIMETER SOFFIT.
- INSTALL A MINIMUM 12"x12" ACCESS DOOR (INLET SIDE) AT EACH MOTORIZED DAMPER, FIRE DAMPER, SMOKE DAMPER, INTAKE FAN, INTAKE FAN, SMOKE DETECTORS AND EXHAUST PLENUMS AND AN ACCESS DOOR AT AIR SUPPLY UNIT FILTER SECTION.
- INSTALL A SHEET METAL SLEEVE AROUND ANY DUCTWORK WHICH GOES THROUGH WALL CONSTRUCTION, PACK FIBERGLASS INSULATION AROUND SLEEVE AND DUCT AND CAULK WITH FIRE SEAL CAULKING.



THIS DRAWING IS THE PROPERTY OF RUSH MECHANICAL CONTRACTORS, INC. IT IS TO BE USED ONLY FOR THE PROJECT AND SITE SPECIFICALLY IDENTIFIED ON THIS DRAWING. IT IS NOT TO BE REPRODUCED, COPIED, OR TRANSMITTED IN ANY FORM OR BY ANY MEANS, ELECTRONIC OR MECHANICAL, INCLUDING PHOTOCOPYING, RECORDING, OR BY ANY INFORMATION STORAGE AND RETRIEVAL SYSTEM.

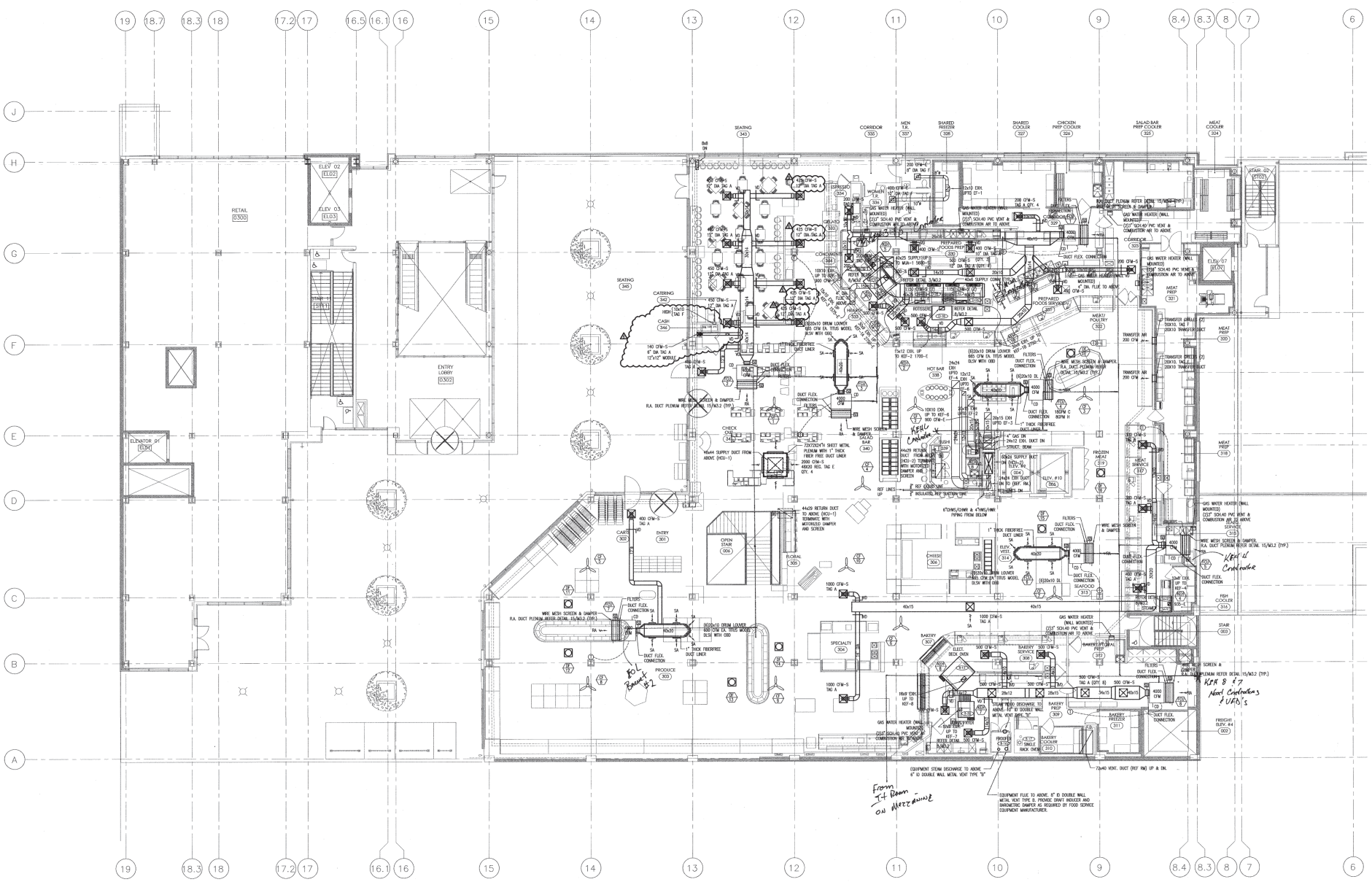
Rush Mechanical Contractors, Inc.
MECHANICAL CONTRACTORS
333 EAST BENTON PLACE SUITE 206
CHICAGO, IL 60601
TEL: 312.467.8788
FAX: 312.467.8789
WWW.RUSHMECHANICAL.COM

SECOND FLOOR, MEZZANINE AND LOWER LEVEL DUCTWORK PLANS
MARIANO'S FRESH MARKET - ROUNDY'S LAKE SHORE EAST INTERIOR DEVELOPMENT
333 EAST BENTON PLACE SUITE 206
CHICAGO, IL 60601

JOB NO. 44788 DATE: 28 SEPTEMBER 2011 REV: A5-BUILT

M1.2
MECHANICAL

21/11,17
5/27 2/8 2011



1 THIRD FLOOR DUCTWORK PLAN
 M1.3 Scale: 1/8" = 1'-0"

NOTES:
 1. INDICATE THE LOCATIONS OF KITCHEN EXHAUST
 2. ALL EXHAUST SHALL STAINLESS WITH TYPICAL
 REPRESENTATIVE.

NEW UNITED, INC.
 1546 BURGUNDY PARKWAY
 STREANWOOD, IL 60077
 (815) 299-1197

9/5/10

THIRD FLOOR DUCTWORK PLAN
 MARIANO'S FRESH MARKET - ROUNDY'S LAKE SHORE EAST INTERIOR DEVELOPMENT
 333 EAST BENTON PLACE SUITE 206
 CHICAGO, IL 60601

M1.3
 ELEV 02
 AS BUILT

STEWART W. NOSKY
 ARCHITECTS, LTD.
 100 N. LAUREL STREET
 CHICAGO, IL 60610

MELVIN COHEN
 AND ASSOCIATES
 100 N. LAUREL STREET
 CHICAGO, IL 60610

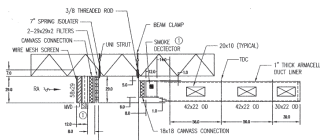
PROJECT: 100 N. LAUREL STREET, CHICAGO, IL 60610
 DATE: 08 FEB 2011
 TIME: 10:00 AM
 DRAWING NO: 18 MAY 2011

Rev. 03 JUNE 2010
 18 MAY 2011
 01 DEC 2010

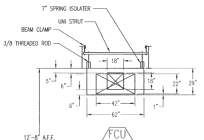
Date: 03 JUNE 2010
 18 MAY 2011
 01 DEC 2010

HVAC NOTES

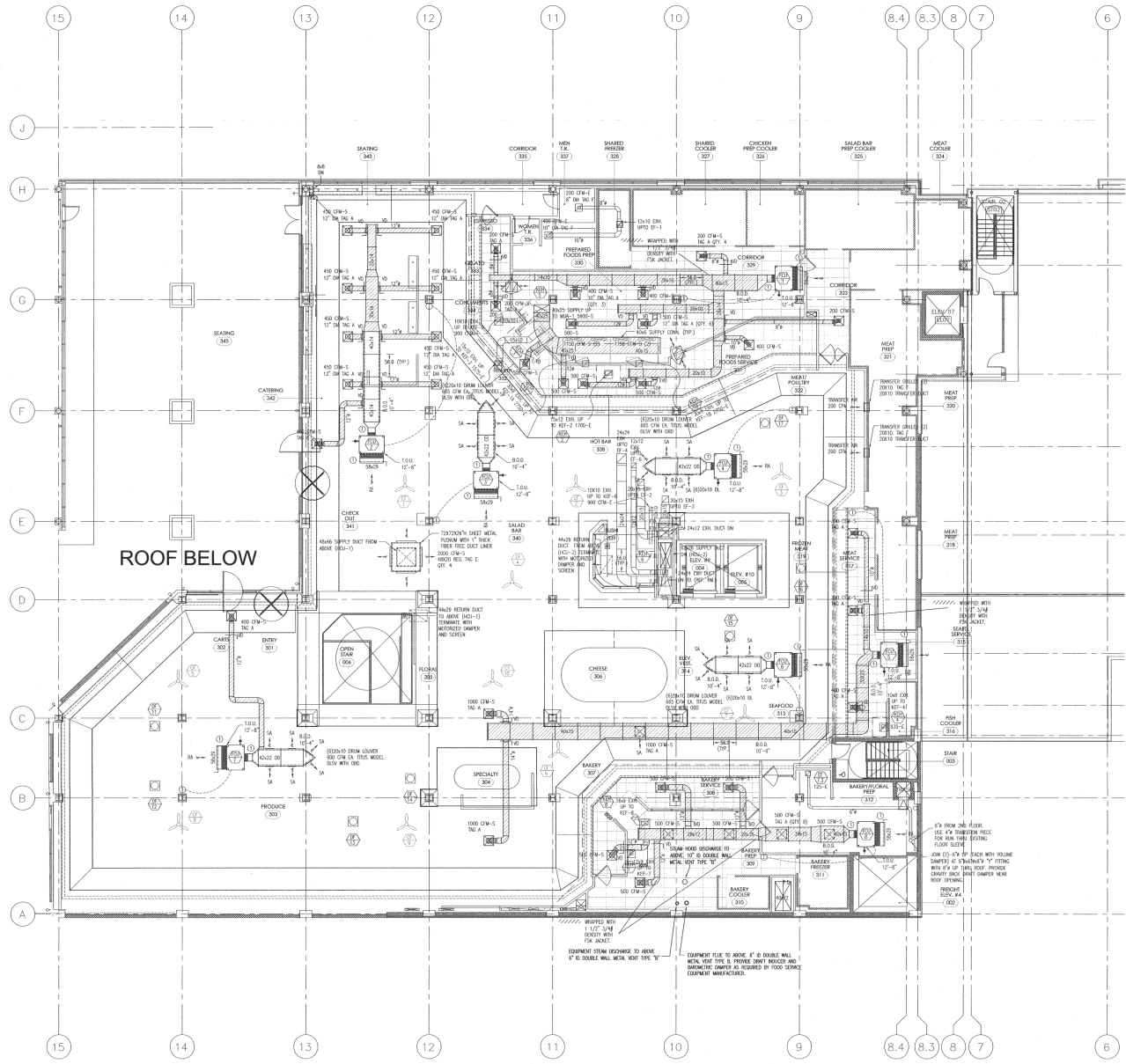
- DUCT TO BE GRD, 2" W/O.
- KITCHEN EXHAUST DUCT TO BE 16 GAUGE BLACK IRON.
- DUCT LINER TO BE 1" THICK ARMACELL. (FCU 3,4,6,7,10,11,12,14,15,17 & HCU 1 & 2.)
- 20' UP STREAM OF FAN TO BE 1" FIBERGLASS DUCT LINER. BALANCE TO BE 1 1/2" 3/4" DENSITY FIBERGLASS BLANKET WITH FSK JACKET (FCU 2,8,9 & 13).
- 1 1/2" 3/4" DENSITY FIBERGLASS BLANKET WITH FSK JACKET (FCU 1,5,6,8,9 & MAU 1).
- BLACK IRON EXHAUST DUCT TO HAVE 2 LAYERS OF FIRE MASTER DUCTWRAP PER CITY OF CHICAGO CODE.
- NO DUCTWORK, PIPING, PLUMBING, ELECTRICAL AND REFRIGERATION SHALL PENETRATE THROUGH PERIMETER SOFFIT.
- INSTALL A MINIMUM 12"x12" ACCESS DOOR (INLET SIDE) AT EACH MOTORIZED DAMPER, FIRE DAMPER, SMOKE DAMPER, INLINE FAN, INTAKE FAN, SMOKE DETECTORS AND EXHAUST FLEUMS AND AN ACCESS DOOR AT AIR SUPPLY UNIT FILTER SECTION.
- INSTALL A SHEET METAL SLEEVE AROUND ANY DUCTWORK WHICH GOES THROUGH WALL CONSTRUCTION, PACK FIBERGLASS INSULATION AROUND SLEEVE AND DUCT AND CALK WITH FIRE SEAL CAULKING.



3 FCU DETAIL SIDEVIEW
M1.3 Scale: 1/4"



2 FCU DETAIL FRONTVIEW
M1.3 Scale: 1/4"



1 THIRD FLOOR DUCTWORK PLAN
M1.3 Scale: 1/8" = 1'-0"

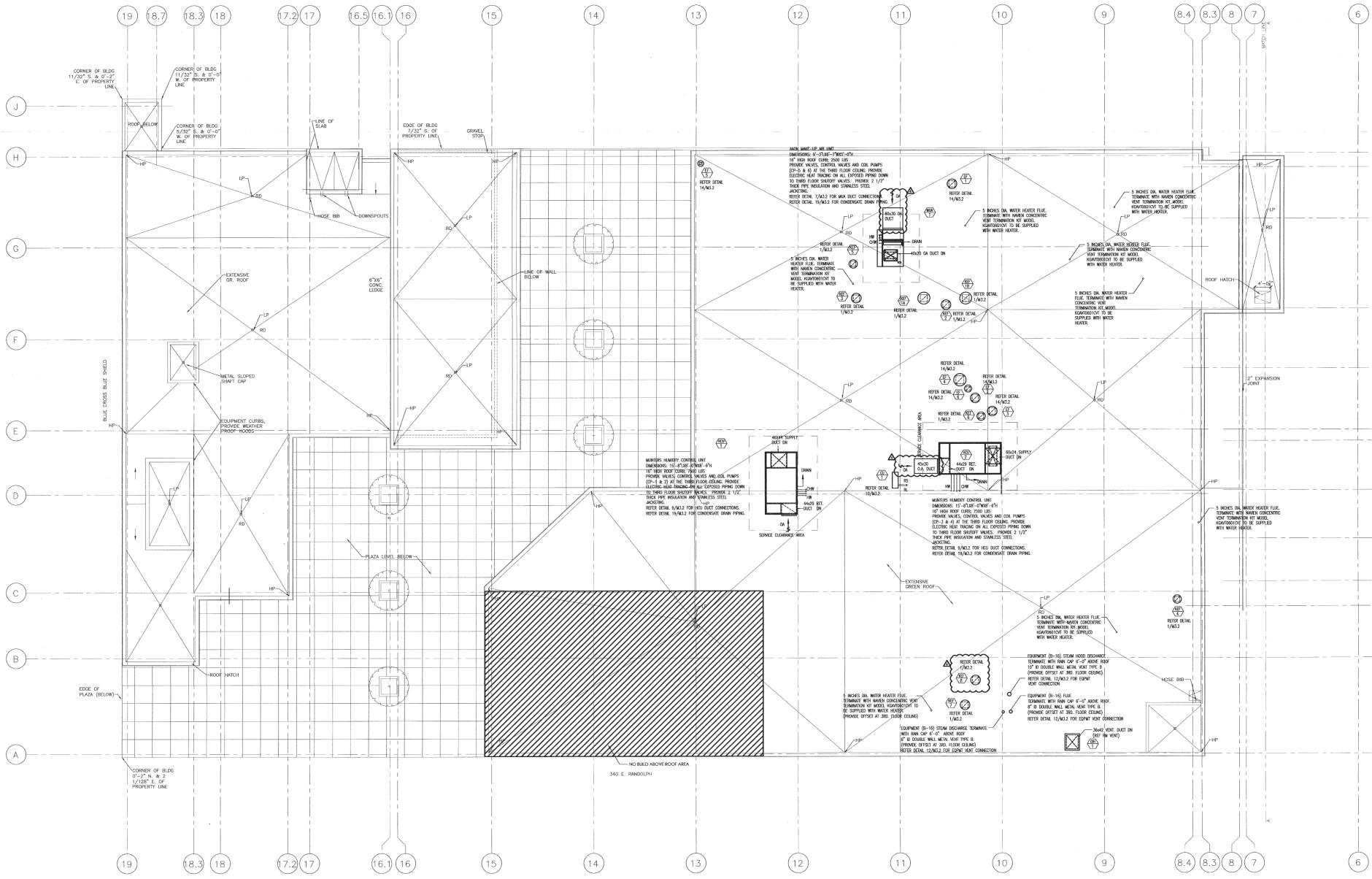


THIS DRAWING AND ALL INFORMATION CONTAINED HEREIN IS THE PROPERTY OF RUSH MECHANICAL CONTRACTORS, INC. IT IS TO BE USED ONLY FOR THE PROJECT AND SITE SPECIFICALLY IDENTIFIED HEREIN.

Rush Mechanical Contractors, Inc.
 1000 N. LAKE ST. CHICAGO, IL 60610
 TEL: 773.327.1100 FAX: 773.327.1101
 WWW.RUSHMECHANICAL.COM

THIRD FLOOR DUCTWORK PLAN
MARIANO'S FRESH MARKET - ROUNDY'S LAKE SHORE EAST INTERIOR DEVELOPMENT
 333 EAST BENTON PLACE SUITE 206
 CHICAGO, IL 60601
 JOB NO. A4788 DATE: 26 SEPTEMBER 2011 REV: AS BUILT

M1.3
 MECHANICAL
 SEP 28 2011



1 MECHANICAL ROOF DUCTWORK PLAN
M1.4 Scale: 1/8" = 1'-0"

NOTES:
1. THE ROOF CURBS FOR ALL ROOF MOUNTED EQUIPMENT SHALL BE
DESIGNED TO SHEAR CONNECTIONS TO REINFORCING MEMBERS.
CONTRACTOR TO COORDINATE THIS ACTIVITY WITH SHEEL CONTRACTOR
FOR A TIMELY COMPLETION OF THE REINFORCING OF ROOF CURBS.

MECHANICAL ROOF DUCTWORK PLAN
MARIANO'S FRESH MARKET - ROUNDY'S LAKE SHORE EAST INTERIOR DEVELOPMENT
333 EAST BENTON PLACE SUITE 206
CHICAGO, IL 60601

STEWART + NOSKY
ARCHITECTS, LTD.
100 W. WABASH, SUITE 1000
CHICAGO, IL 60601

MELVIN COHEN
AND ASSOCIATES
MECHANICAL ENGINEERS
100 W. WABASH, SUITE 1000
CHICAGO, IL 60601

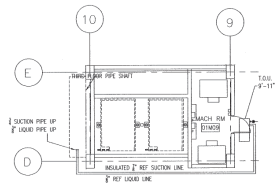
MECHANICAL ENGINEERING
100 W. WABASH, SUITE 1000
CHICAGO, IL 60601

JOB NO: 0860 Date: 03 JUNE 2010
1/8" = 1'-0" (MCA 4/25/10)
03 FEB 2011
03 JUNE 2010
01 DEC 2010

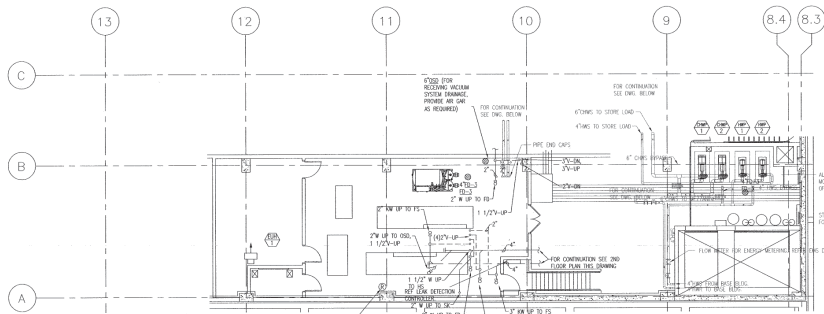
M1.4
SEP 26 2011

BEING NOTES:

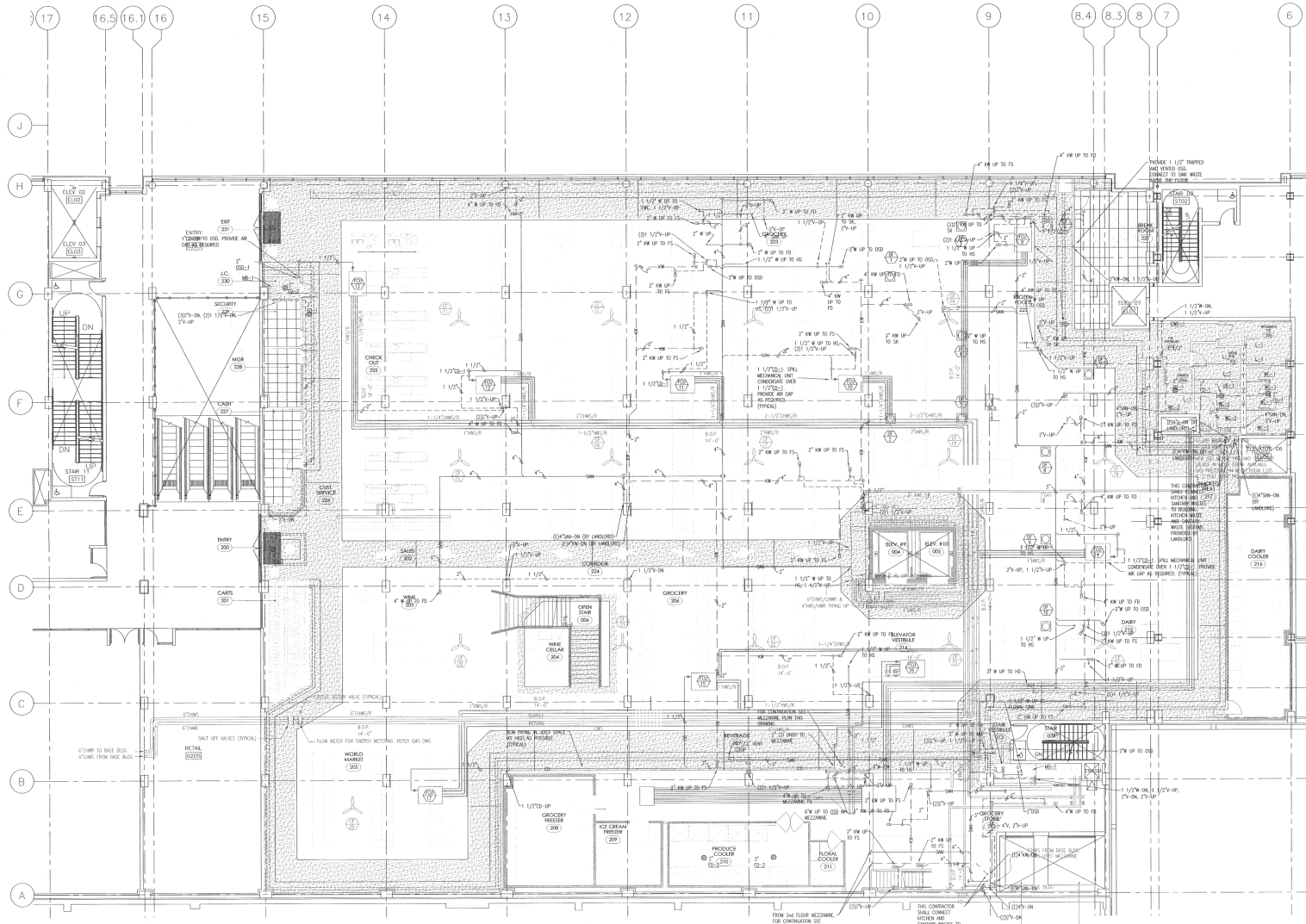
1. HW/CNH 2" AND DOWN TO BE BLACK PIPE SCHEDULE 40 WITH BLACK THREADED MALLEABLE FITTINGS.
2. 1 1/2" AND UP TO BE SCHEDULE 40 WELDED PLANE END PIPE WITH BUTTWELD FITTINGS WITH 150 LB. FLANGES.



3 PARTIAL FIRST FLOOR MEZANINE PIPING PLAN
M2.2 Scale: 1/8"



2 SECOND FLOOR MEZZ. PIPING PLAN
M2.2 Scale: 1/8"



1 SECOND FLOOR PIPING PLAN
M2.2 Scale: 1/8"

This drawing is the property of Rush Mechanical Contractors, Inc. and shall remain confidential. It is to be used only for the project and location specified herein. It is not to be reproduced, copied, or distributed in any form without the written consent of Rush Mechanical Contractors, Inc.

Rush Mechanical Contractors, Inc.
 333 EAST BENTON PLACE SUITE 206
 CHICAGO, IL 60601
 TEL: 312.467.1100
 FAX: 312.467.1101
 WWW.RUSHMECHANICAL.COM

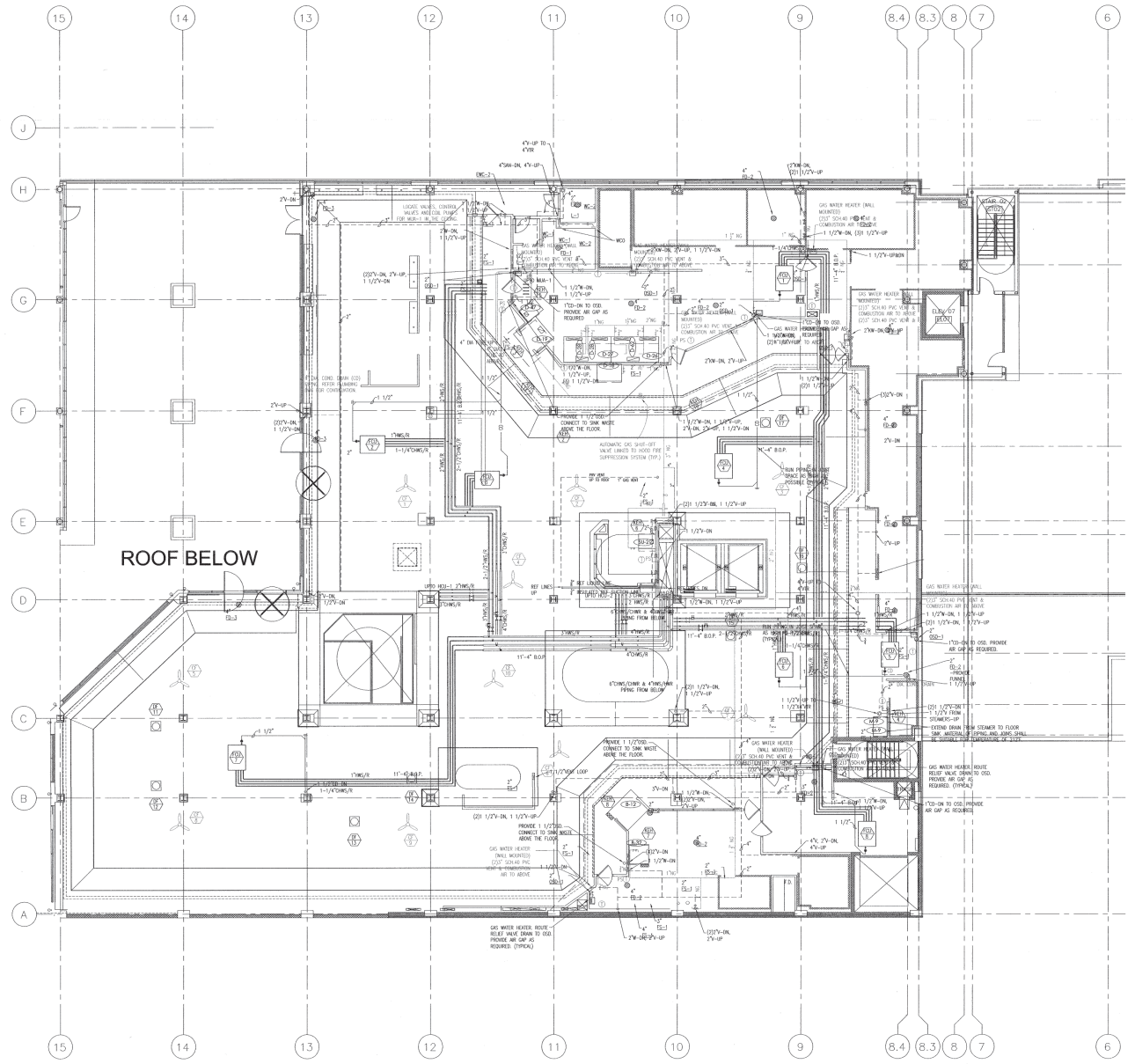
SECOND FLOOR MEZANINE AND LOWER LEVEL PIPING PLANS
MARIANO'S FRESH MARKET - ROUNDY'S LAKE SHORE EAST INTERIOR DEVELOPMENT
 333 EAST BENTON PLACE SUITE 206
 CHICAGO, IL 60601

JDS:Nov. 04/08 Date: 26 SEPTEMBER 2011 Rev.:AS-BUILT

M2.2
 AS-BUILT
 9/25/2011

PIPING NOTES

1. HW/CHW 2" AND DOWN TO BE BLACK PIPE SCHEDULE 40 WITH BLACK THREADED MALLEABLE FITTINGS.
2. 1/2" AND UP TO BE SCHEDULE 40 WELDED PLANE END PIPE WITH BUTTWELD FITTINGS WITH 150 LB. FLANGES.
3. GAS CONNECTION TO BE 6" FROM FLOOR.



1 THIRD FLOOR PIPING PLAN
 M23 Scale: 1/8" = 1'-0"

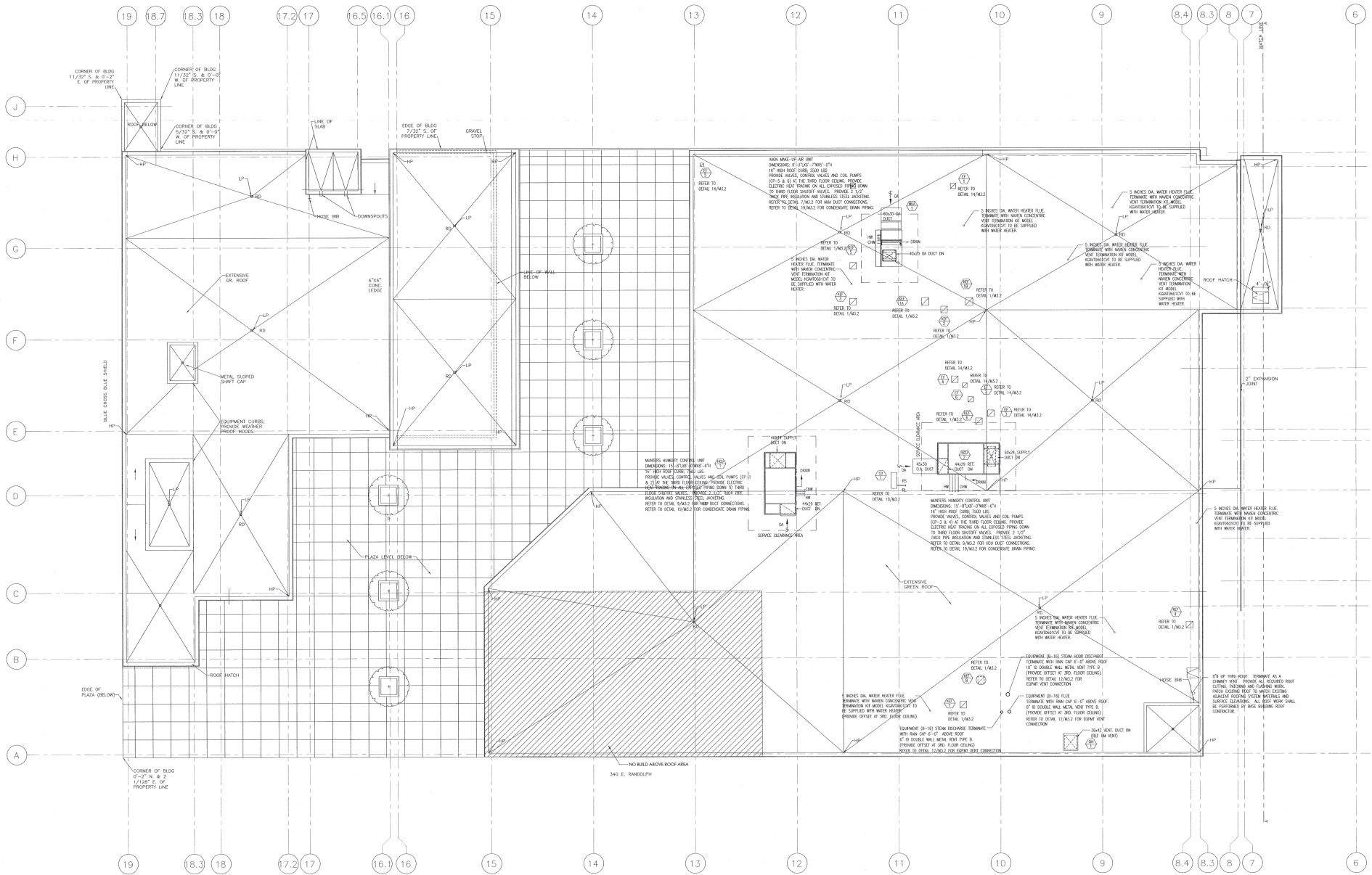
THIS DRAWING HAS BEEN PREPARED BY RUSH MECHANICAL CONTRACTORS, INC. IN ACCORDANCE WITH THE PROFESSIONAL ENGINEERING ACT OF 1987. THE PROFESSIONAL ENGINEER'S SIGNATURE AND SEAL ARE REQUIRED FOR THIS DRAWING TO BE USED FOR CONSTRUCTION.

Rush Mechanical Contractors, Inc.
 333 EAST BENTON PLACE SUITE 206
 CHICAGO, IL 60601
 TEL: 312.467.1111 FAX: 312.467.1112

THIRD FLOOR DUCTWORK PLAN
 MARIANO'S FRESH MARKET - ROUNDY'S LAKE SHORE EAST INTERIOR DEVELOPMENT
 333 EAST BENTON PLACE SUITE 206
 CHICAGO, IL 60601

Date: 26 SEPTEMBER 2011 Rev: AS-BUILT
 Job No: A4788

M23
 RUSH
 SEP 25 2011



1 MECHANICAL ROOF PIPING PLAN
M2.4 Scale: 1/8" = 1'-0"

NOTES:
1. THE ROOF CURVES FOR ALL ROOF MOUNTED EQUIPMENT SHALL BE PROVIDED TO FIELD CONTRACTOR FOR INSTALLATION. MECHANICAL CONTRACTOR TO COORDINATE THIS ACTIVITY WITH FIELD CONTRACTOR FOR A FINAL COMPLETION OF THE INSTALLATION OF ROOF CURVES.

This drawing was prepared by the firm of Rush Mechanical Contractors, Inc. under the supervision of the Professional Engineer named herein. It is not to be construed as a contract document.

Rush Mechanical Contractors, Inc.
MECHANICAL CONTRACTORS
335 EAST BENTON PLACE SUITE 206
CHICAGO, ILL. 60601
TEL: 312.467.1100
FAX: 312.467.1101
WWW.RUSHMECHANICAL.COM

MECHANICAL ROOF PIPING PLAN
MARIANO'S FRESH MARKET - ROUNDY'S LAKE SHORE EAST INTERIOR DEVELOPMENT
335 EAST BENTON PLACE SUITE 206
CHICAGO, IL 60601

JOB NO: A728 Date: 26 SEPTEMBER 2011 Rev: AS-BUILT

M2.4
AS-BUILT
SEP 2011

BUILDING PRESSURIZATION TABLE	
TOTAL ORDNANCE REQUIRED OUTSIDE AIR (CMV)	05.020 (1.0570/3) = 14.920 CMV
TOTAL PLAIN WEATHER OUTSIDE AIR (CMV)	2.000 CMV (FCL-1)
2.000 CMV (FCL-2)	
2.000 CMV (FCL-3)	
TOTAL ACTUAL CONTINUOUS EXHAUST (CMV)	14.920 CMV
KITCHEN 1800 FRESH-AIR EXHAUST 1800 CMV KITCHEN 1800 FRESH-AIR EXHAUST 1800 CMV KITCHEN 1800 FRESH-AIR EXHAUST 1800 CMV KITCHEN 1800 FRESH-AIR EXHAUST 1800 CMV KITCHEN 1800 FRESH-AIR EXHAUST 1800 CMV KITCHEN 1800 FRESH-AIR EXHAUST 1800 CMV KITCHEN 1800 FRESH-AIR EXHAUST 1800 CMV KITCHEN 1800 FRESH-AIR EXHAUST 1800 CMV KITCHEN 1800 FRESH-AIR EXHAUST 1800 CMV KITCHEN 1800 FRESH-AIR EXHAUST 1800 CMV TRUST EXHAUST FAN #1-2 400 CMV TRUST EXHAUST FAN #1-3 1400 CMV TRUST EXHAUST FAN #1-4 1400 CMV TRUST EXHAUST FAN #1-5 1400 CMV TRUST EXHAUST FAN #1-6 300 CMV TOTAL EXHAUST 19.970 CMV	

HEATING TABLE	
BUILDING LOAD (MBH)	1338 MBH
VENTILATION LOAD (MBH)	2063 MBH
TOTAL HEATING LOAD (MBH)	3403 MBH
HEATING SYSTEM OUTPUT CAPACITY (MBH)	4264 MBH
HEATING SYSTEM EQUIPMENT INCLUDED IN THIS TABLE:	
NO.1-1	720 MBH
NO.2-2	720 MBH
NO.3-3	596 MBH
FAN COILS	2272 MBH
TOTAL	4264 MBH

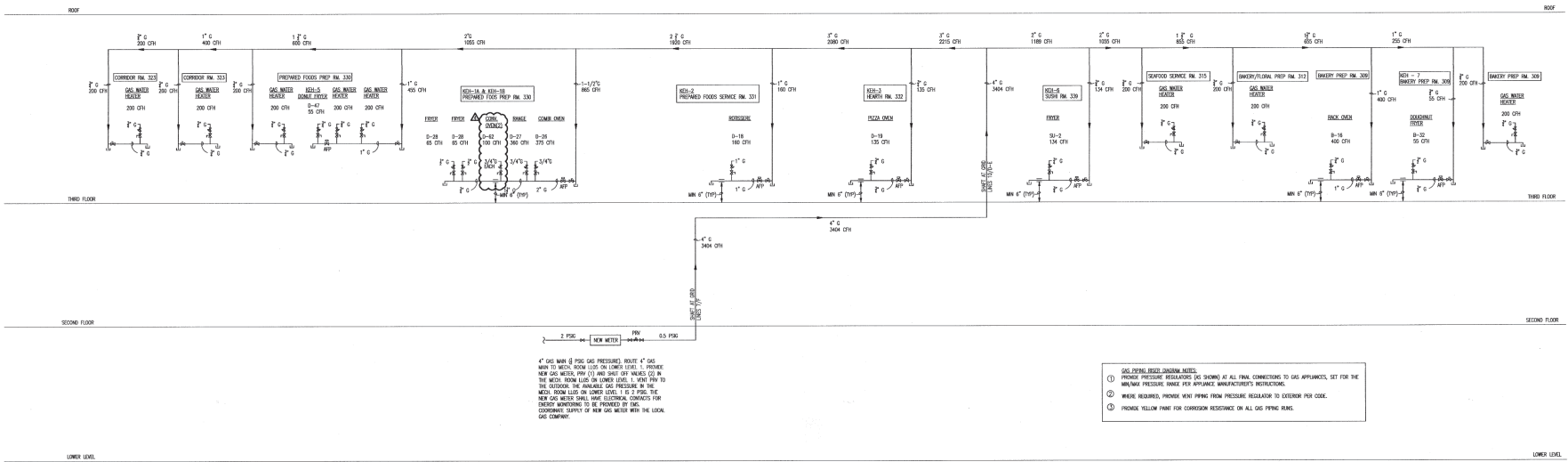
HEATING CERTIFICATION STATEMENT

I HEREBY CERTIFY THAT THE HEATING SYSTEM WILL MEET ALL ROOMS REQUIRING HEATING BY MEANS TO AN INSIDE TEMPERATURE OF 68 DEGREES FAHRENHEIT (20 DEGREES CELSIUS) AT ALL TIMES DURING THE WINTER SEASON. THE SYSTEM IS DESIGNED TO MAINTAIN THE INSIDE TEMPERATURE OF 68 DEGREES FAHRENHEIT (20 DEGREES CELSIUS) AT ALL TIMES DURING THE WINTER SEASON. THE SYSTEM IS DESIGNED TO MAINTAIN THE INSIDE TEMPERATURE OF 68 DEGREES FAHRENHEIT (20 DEGREES CELSIUS) AT ALL TIMES DURING THE WINTER SEASON.

SIGNED: _____
OWNER, CONTRACTOR OR OWNER'S LICENSED ENGINEER REPRESENTATIVE.

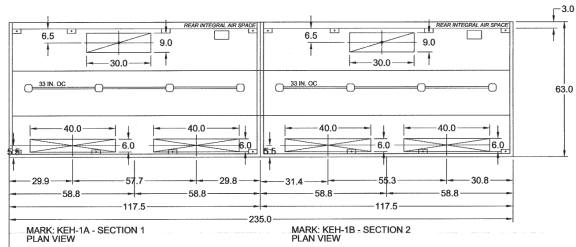
VENTILATION SCHEDULE														
RM. NO.	ROOM NAME	ROOM PURPOSE	FLOOR AREA SQ. FT.	ORDNANCE REQUIREMENTS				PLAN REQUIREMENTS				SERVED BY FAN NO.	SERVED BY EXHAUST FAN NO.	REMARKS
				NATURAL LIGHT AND VENTILATION	MECHANICAL VENTILATION	NATURAL LIGHT AND VENTILATION	MECHANICAL VENTILATION	NATURAL LIGHT AND VENTILATION	MECHANICAL VENTILATION					
SECOND LEVEL														
200	ENTRY	RETAIL STORE	150	--	--	150	150	--	--	600	600	FDI-13	FDI-13	
201	CARTS	RETAIL STORE	--	--	--	--	--	--	--	--	--	--	--	
202	SALES	RETAIL STORE	--	--	--	--	--	--	--	--	--	--	--	
203	MINI	RETAIL STORE	--	--	--	--	--	--	--	--	--	--	--	
204	MINI CLOSET	RETAIL STORE	--	--	--	--	--	--	--	--	--	--	--	
205	WORLD MARKET	RETAIL STORE	--	--	--	--	--	--	--	--	--	FDI-10	FDI-10	
206	GROCKERY	RETAIL STORE	--	--	--	--	--	--	--	--	--	FDI-11	FDI-11	
207	BEVERAGE	RETAIL STORE	22341	--	--	22341	22341	--	--	33,000	32,000	FDI-12	FDI-12	
214	ELEVATOR VESTIBULE	RETAIL STORE	--	--	--	--	--	--	--	--	--	FDI-14	FDI-14	
215	SMOKE	RETAIL STORE	--	--	--	--	--	--	--	--	--	FDI-15	FDI-15	
217	SMOKE HEAT	RETAIL STORE	--	--	--	--	--	--	--	--	--	FDI-16	FDI-16	
222	TRUCKS STORAGE	RETAIL STORE	--	--	--	--	--	--	--	--	--	MEP-2	MEP-2	
223	GROCKERY	RETAIL STORE	--	--	--	--	--	--	--	--	--			
224	COMBODOR	RETAIL STORE	--	--	--	--	--	--	--	--	--			
225	CHEEKWANT	RETAIL STORE	--	--	--	--	--	--	--	--	--			
231	EXIT	RETAIL STORE	150	--	--	150	150	--	--	600	600	FDI-13	FDI-13	
236	GROCKERY FREEZER	STORAGE COLD	200	--	--	0	0	--	--	0	0	--	--	
238	ICE CREAM FREEZER	STORAGE COLD	200	--	--	0	0	--	--	0	0	--	--	
210	PRODUCE COOLER	STORAGE COLD	400	--	--	0	0	--	--	0	0	--	--	
211	FLOOR COOLER	STORAGE COLD	100	--	--	0	0	--	--	0	0	--	--	
212	GROCKERY STORAGE	STORAGE COLD	1671	--	--	806	806	--	--	2,000	2,000	FDI-16	FDI-16	
213	SMOKE VESTIBULE	CORRIDOR	228	--	--	NR	NR	--	--	0	0	--	--	
216	SMOKE COOLER	STORAGE COLD	700	--	--	0	0	--	--	0	0	--	--	
218	WASHROOM	CORRIDOR	184	--	--	NR	NR	--	--	0	0	--	--	
219	WASH TOILET	TOILET ROOM	184	--	--	NR	NR	--	--	0	0	EF-3	EF-3	
220	WASHROOM	TOILET ROOM	204	--	--	NR	NR	--	--	0	0	EF-3	EF-3	
224	UNEX. I.A.	TOILET ROOM	64	--	--	NR	NR	--	--	0	0	EF-3	EF-3	
221	BREAK ROOM	LUNCH ROOM	621	--	--	632	632	--	--	800	800	FDI-9	FDI-9	
226	CUSTOMER SERVICE	OFFICE	98	--	--	58	50	--	--	200	200	FDI-13	FDI-13	
227	COFF	OFFICE	70	--	--	50	50	--	--	100	100	FDI-13	FDI-13	
228	MAIL	OFFICE	94	--	--	57	50	--	--	200	200	FDI-13	FDI-13	
229	SECURITY	OFFICE	76	--	--	150	150	--	--	150	150	FDI-13	FDI-13	
230	J.C.	JANITOR CLOSET	34	--	--	NR	NR	--	--	0	0	EF-5	EF-5	
TOTAL 35,225														
LOWER LEVEL														
001	ELEVATOR LOBBY	CORRIDOR	1100	--	--	NR	NR	--	--	0	0	--	--	
001	FRONT ELEV. #1	CORRIDOR	130	--	--	NR	NR	--	--	0	0	--	--	
002	FRONT ELEV. #2	CORRIDOR	130	--	--	NR	NR	--	--	0	0	--	--	
003	SEWER	CORRIDOR	150	--	--	NR	NR	--	--	0	0	--	--	
004	ELEV. #1	CORRIDOR	85	--	--	NR	NR	--	--	0	0	--	--	
005	ELEV. #2	CORRIDOR	85	--	--	NR	NR	--	--	0	0	--	--	
006	OFFICE STAIR	CORRIDOR	150	--	--	NR	NR	--	--	0	0	--	--	
TOTAL 35,225														

VENTILATION SCHEDULE														
RM. NO.	ROOM NAME	ROOM PURPOSE	FLOOR AREA SQ. FT.	ORDNANCE REQUIREMENTS				PLAN REQUIREMENTS				SERVED BY FAN NO.	SERVED BY EXHAUST FAN NO.	REMARKS
				NATURAL LIGHT AND VENTILATION	MECHANICAL VENTILATION	NATURAL LIGHT AND VENTILATION	MECHANICAL VENTILATION	NATURAL LIGHT AND VENTILATION	MECHANICAL VENTILATION					
THIRD FLOOR														
301	ENTRY	RETAIL STORES	--	--	--	--	--	--	--	--	--	--	--	
302	CARTS	RETAIL STORES	--	--	--	--	--	--	--	--	--	--	--	
303	PRODUCE	RETAIL STORES	--	--	--	--	--	--	--	--	--	--	--	
304	OVERSEAT	RETAIL STORES	--	--	--	--	--	--	--	--	--	--	--	
305	FLOOR	RETAIL STORES	--	--	--	--	--	--	--	--	--	--	--	
306	CHESSE	RETAIL STORES	--	--	--	--	--	--	--	--	--	--	--	
307	BAKERY	RETAIL STORES	--	--	--	--	--	--	--	--	--	FDI-2	FDI-2	
313	SEAFOOD	RETAIL STORES	--	--	--	--	--	--	--	--	--	FDI-3	FDI-3	
314	ELEVATOR VESTIBULE	RETAIL STORES	15000	--	--	15000	15000	--	--	28,000	28,000	FDI-4	FDI-4	
319	FRONT MAIN	RETAIL STORES	--	--	--	--	--	--	--	--	--	FDI-6	FDI-6	
322	WASH/TOILET	RETAIL STORES	--	--	--	--	--	--	--	--	--	FDI-7	FDI-7	
328	HOT BAY	RETAIL STORES	--	--	--	--	--	--	--	--	--	MEP-1	MEP-1	
330	SUSHI	RETAIL STORES	--	--	--	--	--	--	--	--	--			
340	SALE & BAY	RETAIL STORES	--	--	--	--	--	--	--	--	--			
341	CHEEKWANT	RETAIL STORES	--	--	--	--	--	--	--	--	--			
342	CATERING	RETAIL STORES	--	--	--	--	--	--	--	--	--			
343	SEATING	RETAIL STORES	--	--	--	--	--	--	--	--	--			
344	COMMENTS	RETAIL STORES	--	--	--	--	--	--	--	--	--			
308	BAKERY	WORK ROOM	500	--	--	600	600	--	--	1000	1000	FDI-8	600 EXH. EQ#16 B-12	
309	BAKERY PREP	WORK ROOM	500	--	--	600	600	--	--	2000	2000	FDI-8	600 EXH. EQ#16 B-16 2000 EXH. EQ#1-2	
310	BAKERY COOLER	STORAGE COLD	66	--	--	0	0	--	--	0	0	--	--	
311	BAKERY PREP	STORAGE COLD	94	--	--	0	0	--	--	0	0	--	--	
312	WASH/TOILET/FRONT	WORK ROOM	433	--	--	520	520	--	--	1800	1800	FDI-8	FDI-8	
315	SEAFOOD STORAGE	WORK ROOM	319	--	--	623	623	--	--	1000	915	FDI-5	630 EXH. EQ#1-4	
317	MEAT PREP	WORK ROOM	428	--	--	500	500	--	--	1800	1800	FDI-8	FDI-8	
316	FISH COOLER	STORAGE COLD	57	--	--	0	0	--	--	0	0	--	--	
318	MEAT PREP	STORAGE COLD	--	--	--	--	--	--	--	--	--	--	--	
319	MEAT PREP	STORAGE COLD	772	--	--	0	0	--	--	0	0	--	--	
321	MEAT PREP	STORAGE COLD	--	--	--	--	--	--	--	--	--	--	--	
323	CORRIDOR	CORRIDOR	188	--	--	NR	NR	--	--	200	200	FDI-1	FDI-1	
324	MEAT COOLER	STORAGE COLD	211	--	--	0	0	--	--	0	0	--	--	
325	SALE BAY PREP COOLER	STORAGE COLD	264	--	--	0	0	--	--	0	0	--	--	
326	CHICKEN PREP COOLER	STORAGE COLD	133	--	--	0	0	--	--	0	0	--	--	
327	SHAWED COOLER	STORAGE COLD	361	--	--	0	0	--	--	0	0	--	--	
328	SHAWED FREEZER	STORAGE COLD	106	--	--	0	0	--	--	0	0	--	--	
329	CORRIDOR	CORRIDOR	1085	--	--	1302	4540	--	--	2000	2000	FDI-1	FDI-1	
330	PREPARED FOODS PREP	KITCHEN PUBLIC	--	--	--	--	--	--	--	5400	7100	MEP-1	MEP-1	
331	PREPARED FOODS STORAGE	RETAIL STORES	--	--	--	--	--	--	--	1800	2000	FDI-1	FDI-1	
332	HEALTH	RETAIL STORES	--	--	--	--	--	--	--	1900	1900	FDI-1	FDI-1	
333	SEAFOOD	RETAIL STORES	651	--	--	651	651	--	--	1900	1900	FDI-1	FDI-1	
334	ESPRESSO	RETAIL STORES	--	--	--	--	--	--	--	3075	3075	FDI-1	FDI-1	
335	CORRIDOR	CORRIDOR	78	--	--	NR	NR	--	--	0	0	--	--	
336	WOMEN TOILET	TOILET ROOM	162	--	--	NR	NR	--	--	0	0	EF-1	EF-1	
337	MAN TOILET	TOILET ROOM	152	--	--	NR	NR	--	--	0	0	EF-1	EF-1	
339	SUSHI	RETAIL STORES	312	--	--	312	312	--	--	1900	900	FDI-4	900 EXH. EQ#1-6	
TOTAL 76,870														



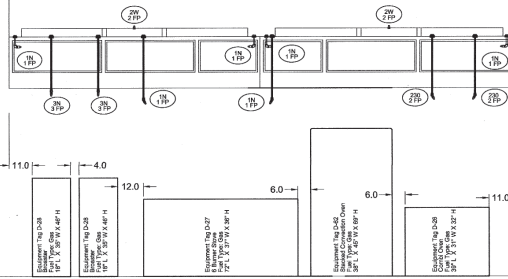
1 GAS PIPING DIAGRAM
M3.3 Score: NONE

STEWART NOSKY ARCHITECTS, LTD.
 MELVIN COHEN AND ASSOCIATES
 MECHANICAL VENT SCHEDULES & GAS PIPING DIAGRAM
 MARIANO'S FRESH MARKET - ROUNDY'S LAKE SHORE EAST INTERIOR DEVELOPMENT
 333 EAST BERTON PLACE SUITE 206
 CHICAGO, ILL. 60601
 Date: 03 JUN 2010
 Rev: 03 JUN 2010
 Job No: 0840 (MCAV 4224)



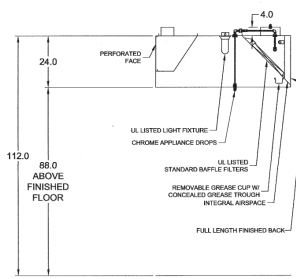
MARK KEH-1A - SECTION 1 PLAN VIEW

MARK KEH-1B - SECTION 2 PLAN VIEW



MARK KEH-1A - SECTION 1 ELEVATION VIEW

MARK KEH-1B - SECTION 2 ELEVATION VIEW



MARK KEH-1 (LAST HOOD IN ROW) SECTION VIEW

- NOTES:
1. THE OPERATION OF KITCHEN EXHAUST HOOD KEH - 1A & KEH - 1B SHALL BE CONTROLLED BY EMS. REFER EMS DRAWINGS FOR FURTHER DETAILS.
 2. THE EXHAUST HOOD FANS KEF - 1A & KEF - 1B SHALL BE PROVIDED WITH VFD TO BE SUPPLIED BY EMS. REFER EMS DRAWINGS FOR FURTHER DETAILS.
 3. THE OPERATION OF HOOD LIGHTS SHALL BE CONTROLLED BY EMS. REFER EMS DRAWINGS FOR FURTHER DETAILS. DO NOT PROVIDE LIGHT SWITCH ON THE FACE OF HOOD.
 4. THE OPERATION OF HOOD EXHAUST FAN SHALL BE CONTROLLED BY EMS. REFER EMS DRAWINGS FOR FURTHER DETAILS. DO NOT PROVIDE FAN SWITCH ON THE FACE OF HOOD.

1 KITCHEN EXHAUST HOOD KEH-1 Scale: NTS

TYPE 1 KITCHEN HOOD MARK KEH-1

HOOD NO.	GREENECK MODEL STYLE / CONFIGURATION	SECTION LENGTH	WIDTH	HEIGHT	GREASE CUP OR DRAIN	HOOD TEMP. RATING	TOTAL WEIGHT	SECTION LOCATION
KEH-1A	OFFRETS INTEGRAL SUPPLY PLENUM WALL CAPOPY	117 IN.	63 IN.	24 IN.	RIGHT	600 DEG F	580 LB.	RIGHT
KEH-1B	INTEGRAL SUPPLY PLENUM WALL CAPOPY	117 IN.	63 IN.	24 IN.	RIGHT	600 DEG F	580 LB.	RIGHT

HOOD NO.	FEATURE TYPE	QTY	INTENSITY FT CANDLES	TYPE / MODEL	QTY	LENGTH	HEIGHT
KEH-1A	INDEPENDENT DISCRETE 100W A19 (BULBS NOT INCL.)	4	32.86 / 33 IN. OC	SEVILLE ALUMINUM	4	2 IN.	20 IN.
KEH-1B	INDEPENDENT DISCRETE 100W A19 (BULBS NOT INCL.)	4	32.86 / 33 IN. OC	SEVILLE ALUMINUM	4	2 IN.	20 IN.

HOOD SECTION #	COLLAR #	DISTANCE TO END (IN.)	WIDTH (IN.)	LENGTH (IN.)	DIAMETER (IN.)	VOLUME (CFM)	S.P. (IN. WC)	VELOCITY (FT/MIN)
1/1	1/1	58.5	9	36	NA	2750	0.529	560
TOTAL EXHAUST CFM - KEH - 1A = 2750 = 382 CFM / FT								
TOTAL EXHAUST CFM - KEH - 1B = 2750 = 382 CFM / FT								

HOOD SECTION #	PLENUM LOCATION	DISTANCE TO END (IN.)	WIDTH (IN.)	LENGTH (IN.)	DIAMETER (IN.)	VOLUME (CFM)	S.P. (IN. WC)	VELOCITY (FT/MIN)
1/1	1/1 FRONT / 2	33	6.0	40.0	NA	1150	0.1058	693
2/1	2/1 FRONT / 2	33	6.0	40.0	NA	1150	0.1058	693
TOTAL FACE DISCHARGE SUPPLY CFM - KEH - 1A = 2300 = 79 CFM / FT								
TOTAL FACE DISCHARGE SUPPLY CFM - KEH - 1B = 2300 = 79 CFM / FT								

OPTIONS AND ACCESSORIES

430 STAINLESS STEEL WHERE EXPOSED

UL LISTED W/O OUT EXHAUST FIRE DAMPER - UL RMH1128

BACK INTEGRAL AIR SPACE - 3 IN WIDE

FINISHED BACK - FULL LENGTH

FACTORY MOUNTED EXHAUST COLLARS

INCLUDES PERFORMANCE ENHANCING LIP (PEL) TECHNOLOGY

STANDING SEAM CONSTRUCTION FOR SUPERIOR STRENGTH

EMBOSSED STAINLESS STEEL FINISH FOR HIGH CORROSION RESISTANCE

FIRE SUPPRESSION SYSTEM MARK FSS-1

MANUFACTURER / MODEL	FLOW POINTS	SUPPLY LINE	DETECTION	MOUNTING
ANSUL R-102 WET CHEMICAL	30 UTILIZED / 22 AVAILABLE	CONTINUOUS	FUSIBLE LINK	LEFT END REMOTE MOUNTED

FULL INSTALLATION (INCLUDES PREPARED HOODS WITH DETECTION AND FACTORY COORDINATED INSTALL)

CHROME SLIDES FOR FACTORY PROVIDED APPLIANCE DROPS - INCLUDED

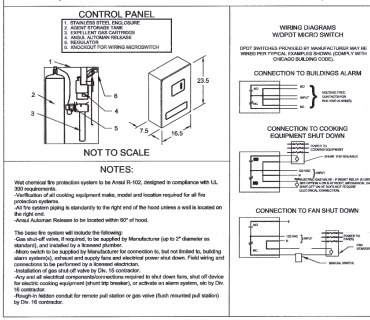
SUPPRESSION AGENT - INCLUDED - 1.6 GAL. (11.5 TANKS)

GAS VALVE - INCLUDED - MECHANICAL SHUTOFF VALVE 2 IN. (ANSUL) - PART# 56619

REMOTE PULL STATION - STANDARD - INSTALLATION AT SINGLE POINT OF ENTRY

FIRE SYSTEM PERMIT - REQUIRED - FEE NOT INCLUDED

ANSUL R102 (WET CHEMICAL) FIRE PROTECTION SYSTEM - MODEL FSSC (FIRE SUPPRESSION SYSTEM MARKS FSS-1, FSS-2, & FSS-3)



- NOTES:
1. The system will operate with the following:
 2. The system will operate with the following:
 3. The system will operate with the following:
 4. The system will operate with the following:
 5. The system will operate with the following:
 6. The system will operate with the following:
 7. The system will operate with the following:
 8. The system will operate with the following:
 9. The system will operate with the following:
 10. The system will operate with the following:

TYPE 1 KITCHEN HOOD MARK KEH-3

HOOD NO.	GREENECK MODEL STYLE / CONFIGURATION	SECTION LENGTH	WIDTH	HEIGHT	GREASE CUP OR DRAIN	HOOD TEMP. RATING	TOTAL WEIGHT	SECTION LOCATION
KEH-3	OFFRETS INTEGRAL SUPPLY PLENUM WALL CAPOPY	72 IN.	63 IN.	24 IN.	RIGHT	600 DEG F	280 LB.	SINGLE

HOOD NO.	FEATURE TYPE	QTY	INTENSITY FT CANDLES	TYPE / MODEL	QTY	LENGTH	HEIGHT
1	INDEPENDENT DISCRETE 100W A19 (BULBS NOT INCL.)	2	31.69 / 31 IN. OC	SEVILLE ALUMINUM	2	2 IN.	20 IN.

HOOD SECTION #	COLLAR #	DISTANCE TO END (IN.)	WIDTH (IN.)	LENGTH (IN.)	DIAMETER (IN.)	VOLUME (CFM)	S.P. (IN. WC)	VELOCITY (FT/MIN)
1/1	1/1	36	10	15	NA	1075	0.451	692
TOTAL EXHAUST CFM - SECTION 1 = 1075 = 245 CFM / FT								

FIRE SUPPRESSION SYSTEM MARK FSS-3

MANUFACTURER / MODEL	FLOW POINTS	SUPPLY LINE	DETECTION	MOUNTING
ANSUL R-102 WET CHEMICAL	2 UTILIZED / 11 AVAILABLE	CONTINUOUS	FUSIBLE LINK	LEFT END REMOTE MOUNTED

FULL INSTALLATION (INCLUDES PREPARED HOODS WITH DETECTION AND FACTORY COORDINATED INSTALL)

CHROME SLIDES FOR FACTORY PROVIDED APPLIANCE DROPS - INCLUDED

SUPPRESSION AGENT - INCLUDED - 1.6 GAL. (11.5 TANKS)

GAS VALVE - INCLUDED - MECHANICAL SHUTOFF VALVE 2 IN. (ANSUL) - PART# 56619

REMOTE PULL STATION - STANDARD - INSTALLATION AT SINGLE POINT OF ENTRY

FIRE SYSTEM PERMIT - REQUIRED - FEE NOT INCLUDED

TYPE 1 KITCHEN HOOD MARK KEH-2

HOOD NO.	GREENECK MODEL STYLE / CONFIGURATION	SECTION LENGTH	WIDTH	HEIGHT	GREASE CUP OR DRAIN	HOOD TEMP. RATING	TOTAL WEIGHT	SECTION LOCATION
KEH-2	OFFRETS INTEGRAL SUPPLY PLENUM WALL CAPOPY	68 IN.	48 IN.	24 IN.	RIGHT	600 DEG F	180 LB.	SINGLE

HOOD NO.	FEATURE TYPE	QTY	INTENSITY FT CANDLES	TYPE / MODEL	QTY	LENGTH	HEIGHT
1	INDEPENDENT DISCRETE 100W A19 (BULBS NOT INCL.)	2	31.69 / 31 IN. OC	SEVILLE ALUMINUM	2	2 IN.	20 IN.

HOOD SECTION #	COLLAR #	DISTANCE TO END (IN.)	WIDTH (IN.)	LENGTH (IN.)	DIAMETER (IN.)	VOLUME (CFM)	S.P. (IN. WC)	VELOCITY (FT/MIN)
1/1	1/1	34	10	15	NA	1075	0.451	692
TOTAL EXHAUST CFM - SECTION 1 = 1075 = 245 CFM / FT								

FIRE SUPPRESSION SYSTEM MARK FSS-2

MANUFACTURER / MODEL	FLOW POINTS	SUPPLY LINE	DETECTION	MOUNTING
ANSUL R-102 WET CHEMICAL	2 UTILIZED / 11 AVAILABLE	CONTINUOUS	FUSIBLE LINK	LEFT END REMOTE MOUNTED

FULL INSTALLATION (INCLUDES PREPARED HOODS WITH DETECTION AND FACTORY COORDINATED INSTALL)

CHROME SLIDES FOR FACTORY PROVIDED APPLIANCE DROPS - INCLUDED

SUPPRESSION AGENT - INCLUDED - 1.6 GAL. (11.5 TANKS)

GAS VALVE - INCLUDED - MECHANICAL SHUTOFF VALVE 2 IN. (ANSUL) - PART# 56619

REMOTE PULL STATION - STANDARD - INSTALLATION AT SINGLE POINT OF ENTRY

FIRE SYSTEM PERMIT - REQUIRED - FEE NOT INCLUDED

TYPE 1 KITCHEN HOOD MARK KEH-3

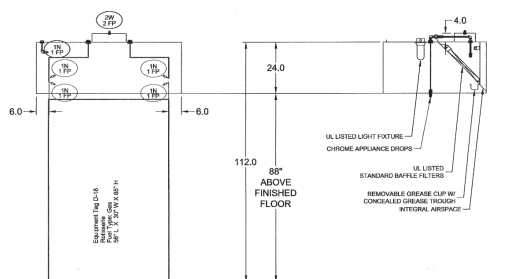
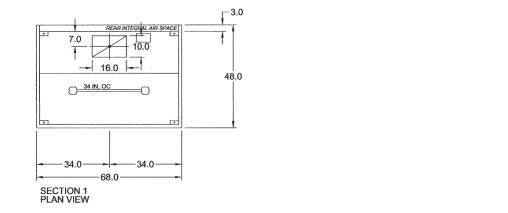
HOOD NO.	GREENECK MODEL STYLE / CONFIGURATION	SECTION LENGTH	WIDTH	HEIGHT	GREASE CUP OR DRAIN	HOOD TEMP. RATING	TOTAL WEIGHT	SECTION LOCATION
KEH-3	OFFRETS INTEGRAL SUPPLY PLENUM WALL CAPOPY	72 IN.	63 IN.	24 IN.	RIGHT	600 DEG F	280 LB.	SINGLE

HOOD NO.	FEATURE TYPE	QTY	INTENSITY FT CANDLES	TYPE / MODEL	QTY	LENGTH	HEIGHT
1	INDEPENDENT DISCRETE 100W A19 (BULBS NOT INCL.)	2	31.69 / 31 IN. OC	SEVILLE ALUMINUM	2	2 IN.	20 IN.

HOOD SECTION #	COLLAR #	DISTANCE TO END (IN.)	WIDTH (IN.)	LENGTH (IN.)	DIAMETER (IN.)	VOLUME (CFM)	S.P. (IN. WC)	VELOCITY (FT/MIN)
1/1	1/1	36	10	15	NA	1075	0.451	692
TOTAL EXHAUST CFM - SECTION 1 = 1075 = 245 CFM / FT								

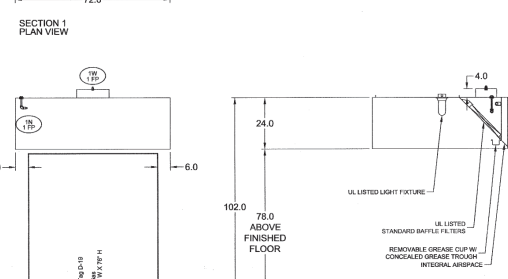
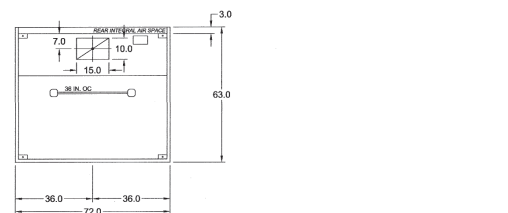
- NOTES:
1. THE OPERATION OF KITCHEN EXHAUST HOOD KEH - 3 SHALL BE CONTROLLED BY EMS. REFER TO EMS DRAWINGS FOR FURTHER DETAILS.
 2. THE EXHAUST HOOD FAN KEF - 3 SHALL BE PROVIDED WITH VFD TO BE SUPPLIED BY EMS. REFER TO EMS DRAWINGS FOR FURTHER DETAILS.
 3. THE OPERATION OF HOOD LIGHTS SHALL BE CONTROLLED BY EMS. REFER TO EMS DRAWINGS FOR FURTHER DETAILS. DO NOT PROVIDE LIGHT SWITCH ON THE FACE OF HOOD.
 4. THE OPERATION OF HOOD EXHAUST FAN SHALL BE CONTROLLED BY EMS. REFER TO EMS DRAWINGS FOR FURTHER DETAILS. DO NOT PROVIDE FAN SWITCH ON THE FACE OF HOOD.

3 KITCHEN EXHAUST HOOD KEH-3 Scale: NTS



MARK KEH-2 SECTION VIEW

2 KITCHEN EXHAUST HOOD KEH-2 Scale: NTS



MARK KEH-3 SECTION VIEW

3 KITCHEN EXHAUST HOOD KEH-3 Scale: NTS

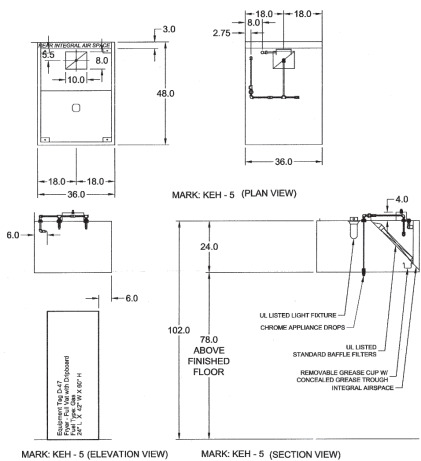
MECHANICAL DETAILS - KITCHEN EXHAUST HOODS
 MARIANO'S FRESH MARKET - ROUNDY'S LAKE SHORE EAST INTERIOR DEVELOPMENT
 CHICAGO, IL 60601

DATE: 03 JUN 2010
 INCL: 02/20
 REV: 01 DEC 2010

STEWART & NOSKY ARCHITECTS, LTD.
 1000 N. LAKE SHORE EAST, SUITE 1000
 CHICAGO, ILLINOIS 60611
 TEL: (773) 372-1000

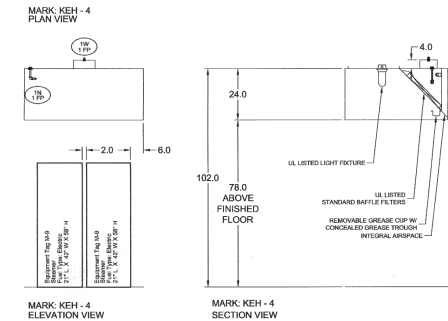
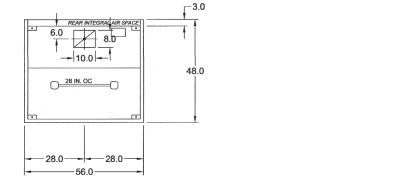
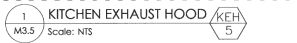
MELVIN COHEN AND ASSOCIATES
 1000 N. LAKE SHORE EAST, SUITE 1000
 CHICAGO, ILLINOIS 60611
 TEL: (773) 372-1000

M3.4



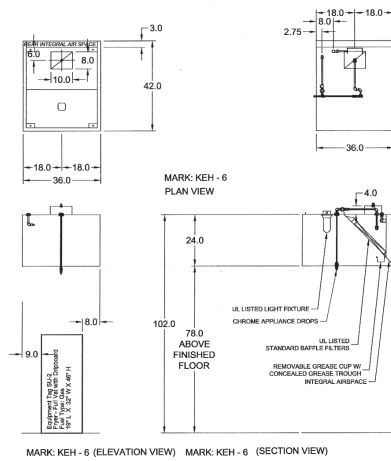
TYPE 1 KITCHEN HOOD										MARK KEH - 5	
HOOD NO.	GREENBROOK MODEL STYLE / CONFIGURATION	SECTION LENGTH	WIDTH	HEIGHT	HOOD TEMP. RATING	GREASE CUP OR DRAIN	HOOD WEIGHT	SECTION LOCATION			
1	GREENBROOK 48" WIDE SINGLE WALL EXHAUST ONLY WALL CANOPY	48 IN.	48 IN.	24 IN.	600 DEG F	900 LBS	100 LBS	SINGLE			
ELIMINATION DETAILS											
HOOD NO.	FIXTURE TYPE	QTY	INTENSITY FT CANDLE	TYPE MODEL MATERIAL	FTY LENGTH	HEIGHT					
1	INCANDESCENT (GLOBE) 100W A19 (GLOBES NOT INCL.)	1	35.2 / 9 IN. DC	BAFFLE ALUMINUM	2	16 IN.	30 IN.				
EXHAUST PLUMBING COLLARS											
HOOD SECTION #	COLLAR #	DISTANCE TO END (IN.)	WIDTH (IN.)	LENGTH (IN.)	DIAMETER (IN.)	VOLUME (CFM)	S.P. (IN. WC)	VELOCITY (FT/MIN)			
1/1		8	8	8	3/4	900	0.50	1000			
TOTAL EXHAUST CFM - SECTION 1											
OPTIONS AND ACCESSORIES											
430 STAINLESS STEEL WHERE EXPOSED											
UL 710 LISTED W/O OUT EXHAUST FIRE DAMPER - UL 6MHI1726											
BACK INTERNAL AIR SPACE - 3 IN WIDE											
FACTORY MOUNTED EXHAUST COLLARS											
INCLUDED PERFORMANCE ENHANCING UP PULL TECHNOLOGY											
STANDING SEAM CONSTRUCTION FOR SUPERIOR STRENGTH											
EMPOSSSED STAINLESS STEEL FINISH FOR HIGH CORROSION RESISTANCE											
FIRE SUPPRESSION SYSTEM											
MANUFACTURER / MODEL SUPPRESSANT TYPE											
ANDER R-102 WET CHEMICAL											
FLOW POINTS											
6 AVAILABLE											
SUPPLY LINE											
CONTINUOUS											
DETECTION											
FUSIBLE LINK											
LEFT END											
MOUNTING											
LEFT END REMOTE MOUNTED											
FILL INSTALLATION (INCLUDES FIRE RATED HOODS) WITH DETECTION AND FACTORY COORDINATED INSTALL											
CHROME SLEEVES FOR FACTORY PROVIDED APPLIANCE DROPS - INCLUDED											
SUPPRESSION AGENT - INCLUDED - 3 GAL. (1) 1.5 TANKS											
GAS VALVE - INCLUDED - MECHANICAL SHUTOFF VALVE 2 IN. (ANSL) - PART# 50610											
REMOTE PULL STATION - STANDARD - INSTALLATION AT SINGLE POINT OF EGRESS											
FIRE SYSTEM PERMIT - REQUIRED - FEE INCLUDED											
FIRE SYSTEM PROTECTED HOOD(S) (UL-300) (MAN NAME / SECTION)											
KEH - 5 - HOOD SECTION 1 - LENGTH 48 IN.											

NOTES:
1. THE OPERATION OF HOOD LIGHTS SHALL BE CONTROLLED BY EMS. REFER TO EMS DRAWINGS FOR FURTHER DETAILS. DO NOT PROVIDE LIGHT SWITCH ON THE FACE OF HOOD.



MARK KEH - 4 ELEVATION VIEW

MARK KEH - 4 SECTION VIEW



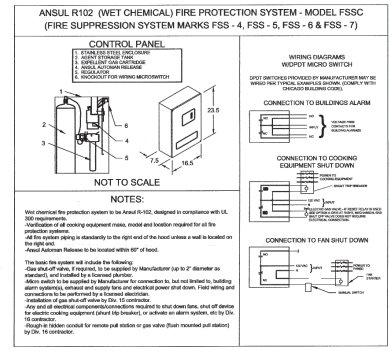
TYPE 1 KITCHEN HOOD										MARK KEH - 6	
HOOD NO.	GREENBROOK MODEL STYLE / CONFIGURATION	SECTION LENGTH	WIDTH	HEIGHT	HOOD TEMP. RATING	GREASE CUP OR DRAIN	HOOD WEIGHT	SECTION LOCATION			
1	GREENBROOK 42" WIDE SINGLE WALL EXHAUST ONLY WALL CANOPY	42 IN.	30 IN.	24 IN.	600 DEG F	900 LBS	100 LBS	SINGLE			
ELIMINATION DETAILS											
HOOD NO.	FIXTURE TYPE	QTY	INTENSITY FT CANDLE	TYPE MODEL MATERIAL	FTY LENGTH	HEIGHT					
1	INCANDESCENT (GLOBE) 100W A19 (GLOBES NOT INCL.)	1	30.2 / 9 IN. DC	BAFFLE ALUMINUM	2	16 IN.	30 IN.				
EXHAUST PLUMBING COLLARS											
HOOD SECTION #	COLLAR #	DISTANCE TO END (IN.)	WIDTH (IN.)	LENGTH (IN.)	DIAMETER (IN.)	VOLUME (CFM)	S.P. (IN. WC)	VELOCITY (FT/MIN)			
1/1		8	8	8	3/4	900	0.50	1000			
TOTAL EXHAUST CFM - SECTION 1											
OPTIONS AND ACCESSORIES											
430 STAINLESS STEEL WHERE EXPOSED											
UL 710 LISTED W/O OUT EXHAUST FIRE DAMPER - UL 6MHI1726											
BACK INTERNAL AIR SPACE - 3 IN WIDE											
FACTORY MOUNTED EXHAUST COLLARS											
INCLUDED PERFORMANCE ENHANCING UP PULL TECHNOLOGY											
STANDING SEAM CONSTRUCTION FOR SUPERIOR STRENGTH											
EMPOSSSED STAINLESS STEEL FINISH FOR HIGH CORROSION RESISTANCE											
FIRE SUPPRESSION SYSTEM											
MANUFACTURER / MODEL SUPPRESSANT TYPE											
ANDER R-102 WET CHEMICAL											
FLOW POINTS											
6 AVAILABLE											
SUPPLY LINE											
CONTINUOUS											
DETECTION											
FUSIBLE LINK											
LEFT END											
MOUNTING											
LEFT END REMOTE MOUNTED											
FILL INSTALLATION (INCLUDES FIRE RATED HOODS) WITH DETECTION AND FACTORY COORDINATED INSTALL											
CHROME SLEEVES FOR FACTORY PROVIDED APPLIANCE DROPS - INCLUDED											
SUPPRESSION AGENT - INCLUDED - 3 GAL. (1) 1.5 TANKS											
GAS VALVE - INCLUDED - MECHANICAL SHUTOFF VALVE 2 IN. (ANSL) - PART# 50610											
REMOTE PULL STATION - STANDARD - INSTALLATION AT SINGLE POINT OF EGRESS											
FIRE SYSTEM PERMIT - REQUIRED - FEE INCLUDED											
FIRE SYSTEM PROTECTED HOOD(S) (UL-300) (MAN NAME / SECTION)											
KEH - 6 - HOOD SECTION 1 - LENGTH 42 IN.											

NOTES:
1. THE OPERATION OF HOOD LIGHTS SHALL BE CONTROLLED BY EMS. REFER TO EMS DRAWINGS FOR FURTHER DETAILS. DO NOT PROVIDE LIGHT SWITCH ON THE FACE OF HOOD.



TYPE 1 KITCHEN HOOD										MARK KEH - 4	
HOOD NO.	GREENBROOK MODEL STYLE / CONFIGURATION	SECTION LENGTH	WIDTH	HEIGHT	HOOD TEMP. RATING	GREASE CUP OR DRAIN	HOOD WEIGHT	SECTION LOCATION			
1	GREENBROOK 50" WIDE SINGLE WALL EXHAUST ONLY WALL CANOPY	50 IN.	48 IN.	24 IN.	600 DEG F	900 LBS	100 LBS	SINGLE			
ELIMINATION DETAILS											
HOOD NO.	FIXTURE TYPE	QTY	INTENSITY FT CANDLE	TYPE MODEL MATERIAL	FTY LENGTH	HEIGHT					
1	INCANDESCENT (GLOBE) 100W A19 (GLOBES NOT INCL.)	2	35.8 / 9 IN. DC	BAFFLE ALUMINUM	2	16 IN.	30 IN.				
EXHAUST PLUMBING COLLARS											
HOOD SECTION #	COLLAR #	DISTANCE TO END (IN.)	WIDTH (IN.)	LENGTH (IN.)	DIAMETER (IN.)	VOLUME (CFM)	S.P. (IN. WC)	VELOCITY (FT/MIN)			
1/1		8	8	8	3/4	900	0.50	1000			
TOTAL EXHAUST CFM - SECTION 1											
OPTIONS AND ACCESSORIES											
430 STAINLESS STEEL WHERE EXPOSED											
UL 710 LISTED W/O OUT EXHAUST FIRE DAMPER - UL 6MHI1726											
BACK INTERNAL AIR SPACE - 3 IN WIDE											
FACTORY MOUNTED EXHAUST COLLARS											
INCLUDED PERFORMANCE ENHANCING UP PULL TECHNOLOGY											
STANDING SEAM CONSTRUCTION FOR SUPERIOR STRENGTH											
EMPOSSSED STAINLESS STEEL FINISH FOR HIGH CORROSION RESISTANCE											
FIRE SUPPRESSION SYSTEM											
MANUFACTURER / MODEL SUPPRESSANT TYPE											
ANDER R-102 WET CHEMICAL											
FLOW POINTS											
3 AVAILABLE											
SUPPLY LINE											
CONTINUOUS											
DETECTION											
FUSIBLE LINK											
LEFT END											
MOUNTING											
LEFT END REMOTE MOUNTED											
FILL INSTALLATION (INCLUDES FIRE RATED HOODS) WITH DETECTION AND FACTORY COORDINATED INSTALL											
CHROME SLEEVES FOR FACTORY PROVIDED APPLIANCE DROPS - INCLUDED											
SUPPRESSION AGENT - INCLUDED - 3 GAL. (1) 1.5 TANKS											
GAS VALVE - INCLUDED - MECHANICAL SHUTOFF VALVE 2 IN. (ANSL) - PART# 50610											
REMOTE PULL STATION - STANDARD - INSTALLATION AT SINGLE POINT OF EGRESS											
FIRE SYSTEM PERMIT - REQUIRED - FEE INCLUDED											
FIRE SYSTEM PROTECTED HOOD(S) (UL-300) (MAN NAME / SECTION)											
KEH - 4 - HOOD SECTION 1 - LENGTH 50 IN.											

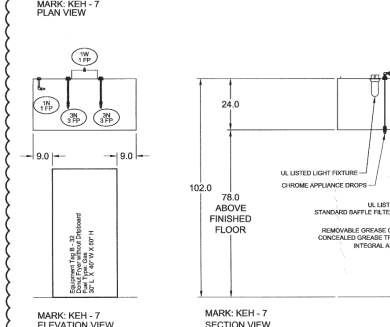
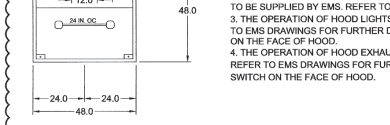
NOTES:
1. THE OPERATION OF HOOD LIGHTS SHALL BE CONTROLLED BY EMS. REFER TO EMS DRAWINGS FOR FURTHER DETAILS. DO NOT PROVIDE LIGHT SWITCH ON THE FACE OF HOOD.



NOTES:
1. THE OPERATION OF HOOD LIGHTS SHALL BE CONTROLLED BY EMS. REFER TO EMS DRAWINGS FOR FURTHER DETAILS. DO NOT PROVIDE LIGHT SWITCH ON THE FACE OF HOOD.

TYPE 1 KITCHEN HOOD										MARK KEH - 7	
HOOD NO.	GREENBROOK MODEL STYLE / CONFIGURATION	SECTION LENGTH	WIDTH	HEIGHT	HOOD TEMP. RATING	GREASE CUP OR DRAIN	HOOD WEIGHT	SECTION LOCATION			
1	GREENBROOK 48" WIDE SINGLE WALL EXHAUST ONLY WALL CANOPY	48 IN.	48 IN.	24 IN.	600 DEG F	900 LBS	100 LBS	SINGLE			
ELIMINATION DETAILS											
HOOD NO.	FIXTURE TYPE	QTY	INTENSITY FT CANDLE	TYPE MODEL MATERIAL	FTY LENGTH	HEIGHT					
1	INCANDESCENT (GLOBE) 100W A19 (GLOBES NOT INCL.)	2	43.7 / 9 IN. DC	BAFFLE ALUMINUM	2	16 IN.	30 IN.				
EXHAUST PLUMBING COLLARS											
HOOD SECTION #	COLLAR #	DISTANCE TO END (IN.)	WIDTH (IN.)	LENGTH (IN.)	DIAMETER (IN.)	VOLUME (CFM)	S.P. (IN. WC)	VELOCITY (FT/MIN)			
1/1		8	8	8	3/4	900	0.50	1000			
TOTAL EXHAUST CFM - SECTION 1											
OPTIONS AND ACCESSORIES											
430 STAINLESS STEEL WHERE EXPOSED											
UL 710 LISTED W/O OUT EXHAUST FIRE DAMPER - UL 6MHI1726											
BACK INTERNAL AIR SPACE - 3 IN WIDE											
FACTORY MOUNTED EXHAUST COLLARS											
INCLUDED PERFORMANCE ENHANCING UP PULL TECHNOLOGY											
STANDING SEAM CONSTRUCTION FOR SUPERIOR STRENGTH											
EMPOSSSED STAINLESS STEEL FINISH FOR HIGH CORROSION RESISTANCE											
FIRE SUPPRESSION SYSTEM											
MANUFACTURER / MODEL SUPPRESSANT TYPE											
ANDER R-102 WET CHEMICAL											
FLOW POINTS											
8 AVAILABLE											
SUPPLY LINE											
CONTINUOUS											
DETECTION											
FUSIBLE LINK											
LEFT END											
MOUNTING											
LEFT END REMOTE MOUNTED											
FILL INSTALLATION (INCLUDES FIRE RATED HOODS) WITH DETECTION AND FACTORY COORDINATED INSTALL											
CHROME SLEEVES FOR FACTORY PROVIDED APPLIANCE DROPS - INCLUDED											
SUPPRESSION AGENT - INCLUDED - 3 GAL. (1) 1.5 TANKS											
GAS VALVE - INCLUDED - MECHANICAL SHUTOFF VALVE 2 IN. (ANSL) - PART# 50610											
REMOTE PULL STATION - STANDARD - INSTALLATION AT SINGLE POINT OF EGRESS											
FIRE SYSTEM PERMIT - REQUIRED - FEE NOT INCLUDED											
FIRE SYSTEM PROTECTED HOOD(S) (UL-300) (MAN NAME / SECTION)											
KEH - 7 SECTION 1 - LENGTH 48 IN.											

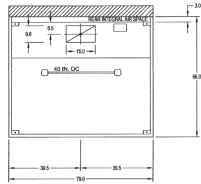
NOTES:
1. THE OPERATION OF KITCHEN EXHAUST HOOD KEH - 7 SHALL BE CONTROLLED BY EMS. REFER TO EMS DRAWINGS FOR FURTHER DETAILS.
2. THE EXHAUST HOOD FAN KEH - 7 SHALL BE PROVIDED WITH VFD TO BE SUPPLIED BY EMS. REFER TO EMS DRAWINGS FOR FURTHER DETAILS.
3. THE OPERATION OF HOOD LIGHTS SHALL BE CONTROLLED BY EMS. REFER TO EMS DRAWINGS FOR FURTHER DETAILS. DO NOT PROVIDE LIGHT SWITCH ON THE FACE OF HOOD.
4. THE OPERATION OF HOOD EXHAUST FAN SHALL BE CONTROLLED BY EMS. REFER TO EMS DRAWINGS FOR FURTHER DETAILS. DO NOT PROVIDE FAN SWITCH ON THE FACE OF HOOD.



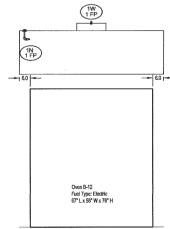
MARK KEH - 7 ELEVATION VIEW

MARK KEH - 7 SECTION VIEW

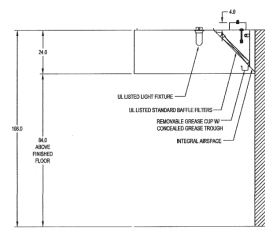




MARK KEH-8 SECTION 1
PLAN VIEW



MARK KEH-8 SECTION 1
ELEVATION VIEW



MARK KEH-8
SECTION VIEW

KITCHEN EXHAUST HOOD
Scale: 3/8" = 1'-0"

- NOTES**
1. THE OPERATION OF KITCHEN EXHAUST HOODS KEH-8 SHALL BE CONTROLLED BY EML REFER TO EML DRAWINGS FOR FURTHER DETAILS.
 2. THE EXHAUST HOOD FAN KEH-8 SHALL BE PROVIDED WITH VFD TO BE SUPPLIED BY EML REFER TO EML DRAWINGS FOR FURTHER DETAILS.
 3. THE OPERATION OF HOOD LIGHTS SHALL BE CONTROLLED BY EML REFER TO EML DRAWINGS FOR FURTHER DETAILS. DO NOT PROVIDE LIGHT SWITCH ON THE FACE OF HOOD.
 4. THE OPERATION OF HOOD CONTACT TIME SHALL BE CONTROLLED BY EML REFER TO EML DRAWINGS FOR FURTHER DETAILS. DO NOT PROVIDE FAN SWITCH ON THE FACE OF HOOD.

TYPE 1 KITCHEN HOOD									
HOOD NO.	GREENRICK MODEL STYLE / CONFIGURATION	HOOD DIMENSIONS			DRAIN	HOOD TEMP.	TOTAL WEIGHT	SECTION LOCATION	MARK KEH-8
		SECTION LENGTH	WIDTH	DEPTH					
1	SINGLE WALL EXHAUST ONLY WALL MOUNT	70 IN.	30 IN.	30 IN.	RIGHT	180 IN.	200 LB.	30 IN.	30 IN.

ILLUMINATION DETAILS									
HOOD NO.	FITTURE TYPE	QUANTITY	INTENSITY FT CANDLES	TYPE MODEL MATERIAL			HEIGHT		
				TYPE	MODEL	MATERIAL			
1	INDIRECT (COOLER) 1000K AT 50 IN. OC.	2	3524 / 40 IN. OC.	DIFFUSE	ALUMINUM	1	30 IN.		

HOOD SECTION # COLLAR #									
TOTAL EXHAUST CFM - SECTION	DISTANCE TO DUCT (IN.)	WIDTH (IN.)	LENGTH (IN.)	DIAMETER (IN.)	VOLUME CFM	E.P. (IN. W.C.)	VELOCITY (FT. MIN)	E.P. (IN. W.C.)	1000 CFM / FT.
	30.0	30.0	30.0	NA	1000	1.00	1000	1.00	1000

OPTIONS AND ACCESSORIES

400 STAINLESS STEEL WHERE EXPOSED
 1/4" THICK 304 STAINLESS STEEL EXHAUST FAN DAMPER - 1/4" DAMPERS
 BACK INTERNAL AIR BRIDGE - 3 IN. WIDE
 FACTORY INSULATED EXHAUST COLLAR(S)
 INCLUDES PERFORMANCE ENHANCING LP FUEL TECHNOLOGY
 STAINLESS SEAM CONSTRUCTION FOR SUPERIOR STRENGTH
 EMBOSSED STAINLESS STEEL FINISH FOR HIGH CORROSION RESISTANCE

FIRE SUPPRESSION SYSTEM									
MANUFACTURER / MODEL	FLOW POINTS	SUPPLY LINE	DETECTION	MARK ANNUAL FSD-8					
ANULOK 8000 WET CHEMICAL	2 FLOW POINTS AVAILABLE	CONTINUOUS	FUSIBLE LINK	LEFT CHAS REMOTE MOUNTED					

FULL INSTALLATION INCLUDES FIRE-PROTECTED HOODS (WITH DETECTION AND FACTORY COORDINATED INSTALL)
 CHROME SLEEVES FOR FACTORY PROVIDED APPLIANCES DROPS - INCLUDED
 SUPPRESSION AGENT - INCLUDED - 1.0 GAL. (BY 1.0 TANKS)
 GAS VALVE - INCLUDED - MECHANICAL SHUTOFF VALVE (2" ANNUAL) PART# 6910
 REMOTE PULL STATION - STANDARD - INSTALLATION AT SINGLE POINT OF EGRESS
 FIRE SYSTEM PERMIT - REQUIRED - YES NOT INCLUDED

FIRE SYSTEM PROTECTED HOODS (E.L. 300) MARK NAME SECTION#
 KEH-8 SECTION 1 - LENGTH 70 IN.

ANULOK 8000 WET CHEMICAL FIRE PROTECTION SYSTEM MODEL FSD-8
 (FIRE SUPPRESSION SYSTEM MARKS FSD-8)

CONTROL PANEL

1. STAINLESS STEEL ENCLOSURE
2. LIGHT TIGHTNESS
3. FUSIBLE LINK
4. ANULOK 8000 WET CHEMICAL
5. SHUTOFF VALVE
6. SHUTOFF FOR WIRING MICROBATCH

SCALE: 1/2" = 1'-0"

WIRING DIAGRAM

WIRING DIAGRAMS MUST BE PROVIDED BY MANUFACTURER. WIRING MUST BE PROVIDED BY MANUFACTURER. WIRING MUST BE PROVIDED BY MANUFACTURER. WIRING MUST BE PROVIDED BY MANUFACTURER.

CONNECTION TO BUILDING ALARM

CONNECTION TO COOKING EQUIPMENT SHUT DOWN

CONNECTION TO FAN SHUT DOWN

MECHANICAL DETAILS - KITCHEN EXHAUST HOODS
 MARIANO'S FRESH MARKET - ROUNDY'S LAKE SHORE EAST INTERIOR DEVELOPMENT
 333 EAST BENTON PLACE SUITE 206
 CHICAGO, IL 60601

STEWART + NOSKY
 ARCHITECTS, LTD.
 100 N. LAKE STREET
 CHICAGO, IL 60601
 TEL: (312) 427-1000
 FAX: (312) 427-1001

MELVIN COHEN
 AND ASSOCIATES
 MECHANICAL ENGINEERS
 100 N. LAKE STREET
 CHICAGO, IL 60601
 TEL: (312) 427-1000
 FAX: (312) 427-1001

ANULOK 8000 WET CHEMICAL FIRE PROTECTION SYSTEM MODEL FSD-8
 (FIRE SUPPRESSION SYSTEM MARKS FSD-8)

JOB NO: 0840 (MC# 44294) Date: 03 JUN 2010
 Rev: 03 JUN 2010
 01 DEC 2010
 08 FEB 2011

M3.6
 AS BUILT
 8 2011