

HOOD INFORMATION																	
HOOD NO.	MARK	MODEL	HOOD DIMENSIONS (IN.)			HOOD CONSTR.	COOKING LOAD / DUTY RATING	TOTAL CFM	EXHAUST COLLAR(S)					SUPPLY		TOTAL WEIGHT LBS.	SECTION LOCATION
			LENGTH	WIDTH	HEIGHT				WIDTH	LENGTH	DIA.	CFM	S.P.	MJA CFM	AC CFM		
1	GRIDDLE HOOD	XGEP-64-S	64	TOP 23 BOT 8	FRT 12 BACK 36	430 SS WHERE EXPOSED	MEDIUM	1500	12	12		1500	1.918			137	SINGLE

HOOD INFORMATION																	
HOOD NO.	MARK	LIGHTING DETAILS			GREASE FILTRATION DETAILS			UTILITY CABINET(S)									
		FIXTURE TYPE	QTY	FOOT CANDLES	TYPE / MODEL	QTY	SIZE (IN.)	LOCATION	FIRE SYSTEM		CONTROLS						
1	GRIDDLE HOOD				GREASE GRABBER	4	16										
					STAINLESS STEEL	0	20	16									

HOOD OPTIONS														
UL 710 LISTED W/ OUT EXHAUST FIRE DAMPER - UL #R25625										SPECIAL DESIGN REQUESTS				
BACK NON-INTEGRAL AIR SPACE - 3 IN WIDE										SDR #K1100145 - FLUE BYPASS HOOD				
26 IN HIGH CEILING ENCLOSURES - FRONT LEFT RIGHT - FIELD INSTALLED										SDR #K1800144 - CULVERS 4VAT 2FIRE PROCESS - GRIDDLE HOOD				
FACTORY MOUNTED EXHAUST COLLAR(S)														
PERFORMANCE ENHANCING LIP (PEL) TECHNOLOGY														
STANDING SEAM CONSTRUCTION FOR SUPERIOR STRENGTH														

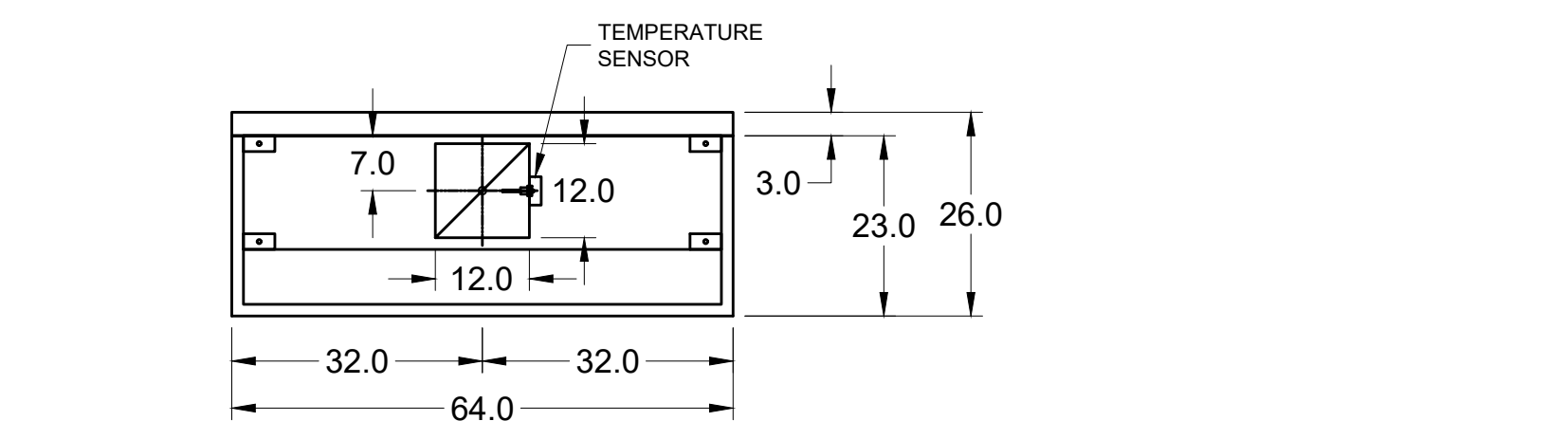
Direct Drive Upblast Centrifugal Roof Exhaust Fan														
MARK INFORMATION			FAN INFORMATION						MOTOR INFORMATION					
QTY	MARK	MODEL	VOLUME (CFM)	TOTAL EXTERNAL SP (IN WG)	FAN RPM	OPERATING POWER (HP)	WEIGHT (LB.)	SIZE (HP)	V/C/P	ENCLOSURE	MOTOR RPM	WINDINGS	NEC FLA*	
1	PRV-2 Griddle Fan	XCUE-140-VG	1,500	1.801	1,725	0.83	92	1	115/60/1	OP	1725	1	16	

*NEC FLA - Based on table 430.250 or 430.248 of National Electrical Code 2020. Actual motor FLA may vary for sizing thermal overload, consult factory"

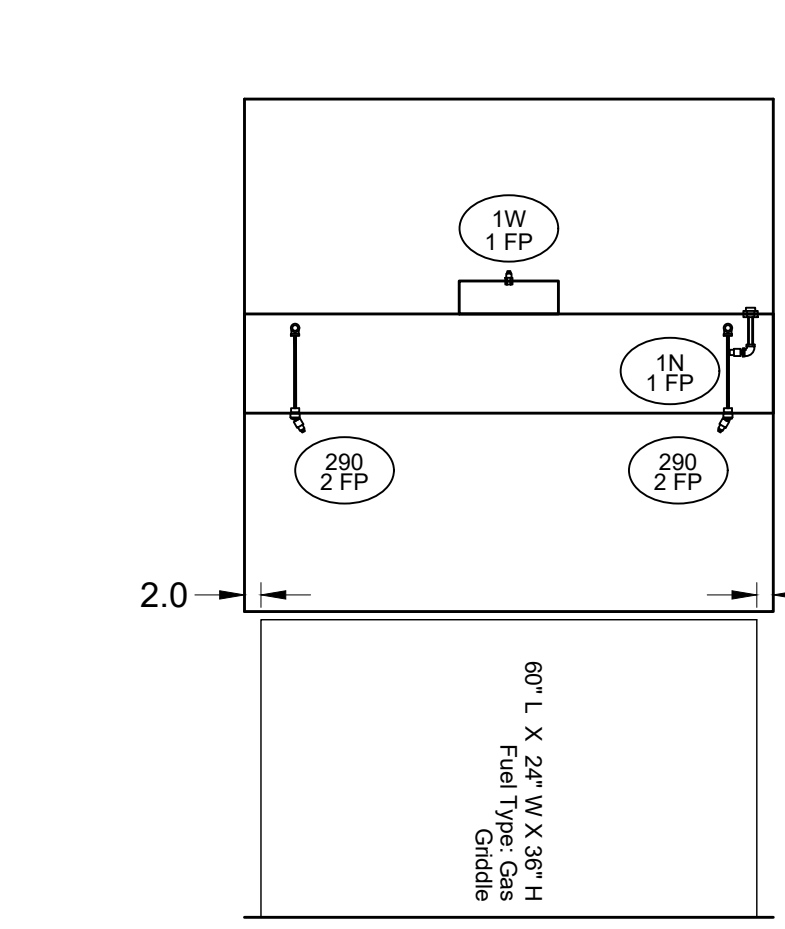
PRV-2 Griddle Fan : SELECTED OPTIONS AND ACCESSORIES														
One piece fully welded windband														
Tapered bushing wheel hub														
Breather tube outlet area min. 4.4 sq. in. (sizes 99-480), 2.0 sq. in. (sizes 60-95)														
Min. windband material thickness: 0.051" aluminum (060-240), 0.064" aluminum (240HP, 240XP), 0.080" aluminum (sizes 300-480)														
Larger Curb Cap Size - 26 Square														
UL/cUL 705 Listed - Supplement SC - "Power Ventilators for Restaurant Exh. Appliances" (Formerly UL 762)														
Switch, NEMA-3R, Toggle,														
Hinge, Factory Installed														
High Temp Curb Seal Rated for Continuous Duty at 1500 F (Factory Attached)														
Grease Trap (PN 475538)														
Clean-out Port - Factory Installed														
Conduit Chase Qty 1														

FIRE SYSTEM INFORMATION									
MARK	MODEL	LOCATION	FLOW POINTS		SUPPLY LINE	DETECTION	MARK(S) PROTECTED BY FIRE SYSTEM		
			HOODS	PCU					
GRIDDLE FSS-PP	ANSUL R-102 WET CHEMICAL	RIGHT END PRE-PIPE ONLY	6 UTILIZED	11 AVAILABLE	CONTINUOUS	FUSIBLE LINK	GRIDDLE HOOD SECTION 1		

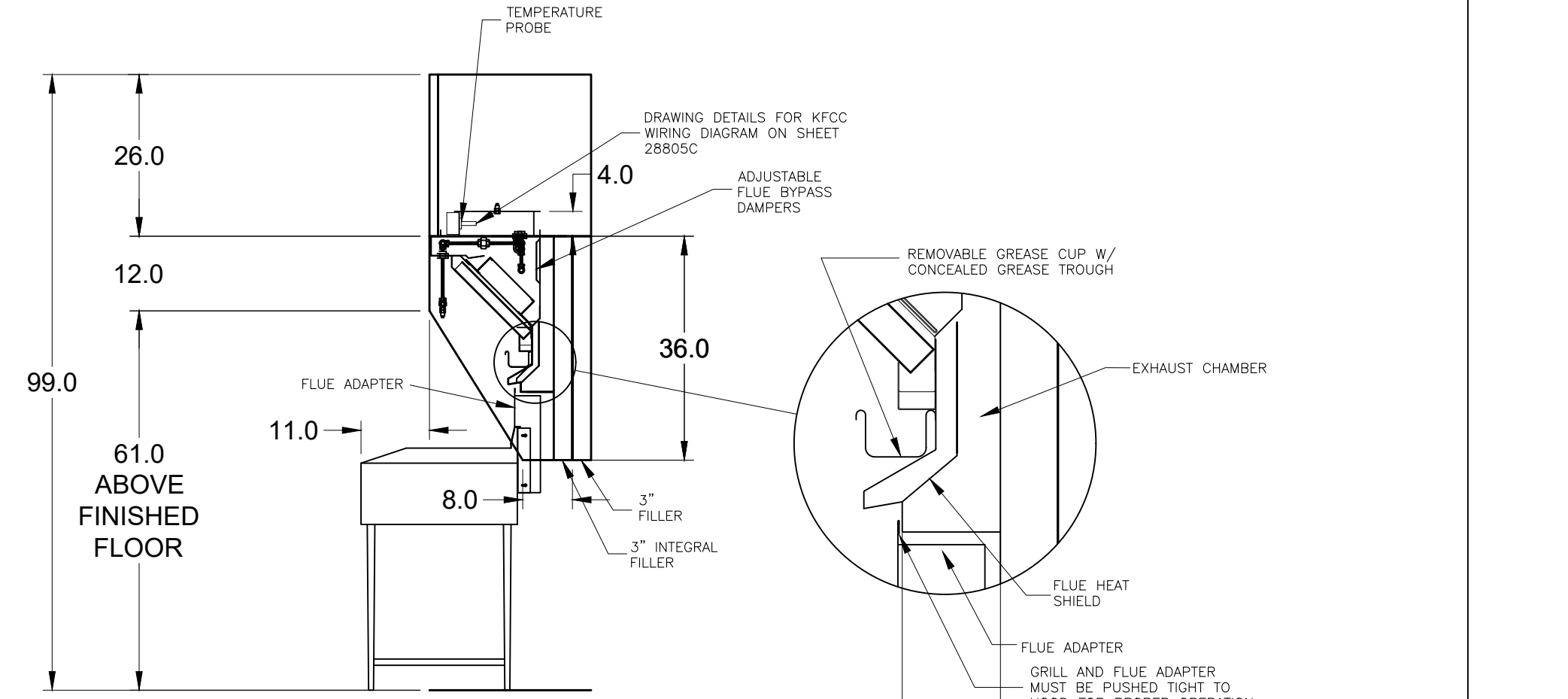
FIRE SYSTEM OPTIONS AND ACCESSORIES
 PRE-PIPE ONLY (INCLUDES PRE-PIPED HOOD(S) WITH DETECTION ONLY)
 CHROME SLEEVES FOR FACTORY PROVIDED APPLIANCES DROPS - INCLUDED
 METAL BLOW-OFF CAPS - INCLUDED



MARK: Griddle Hood - SECTION 1 PLAN VIEW

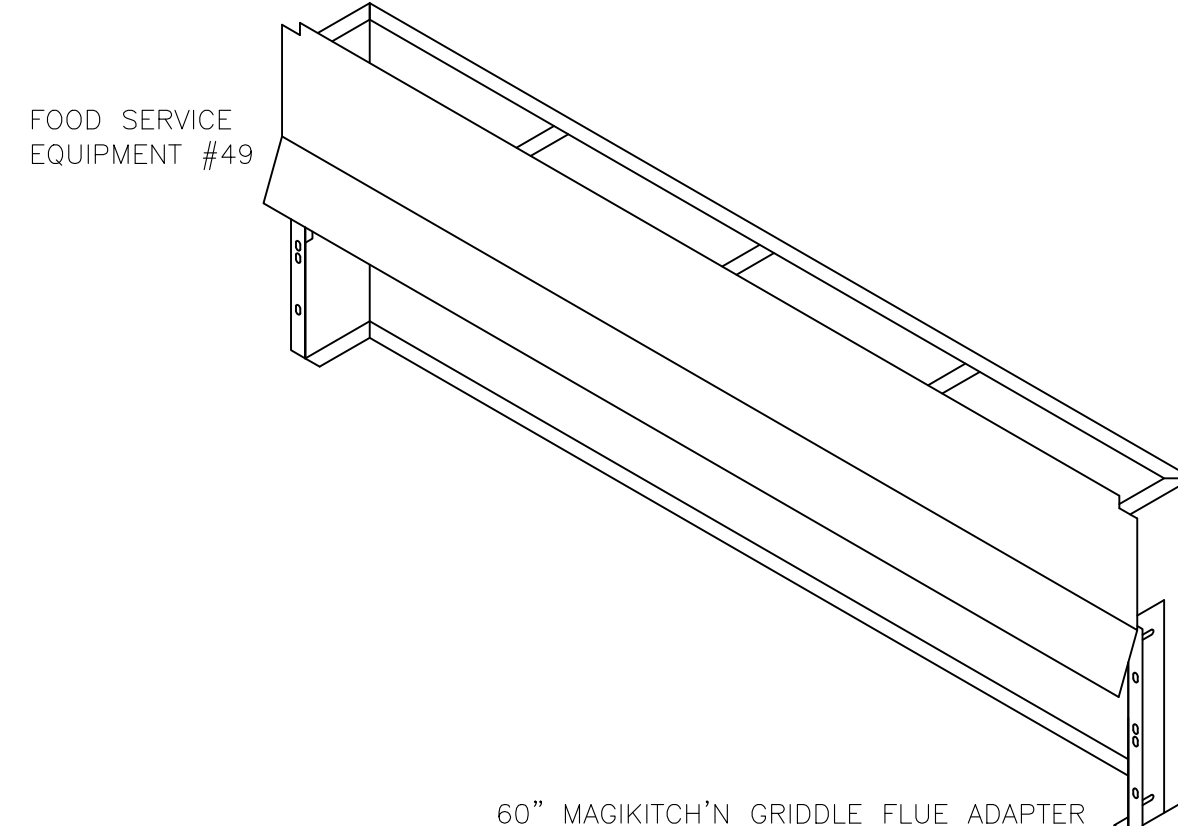


SECTION 1 ELEVATION VIEW



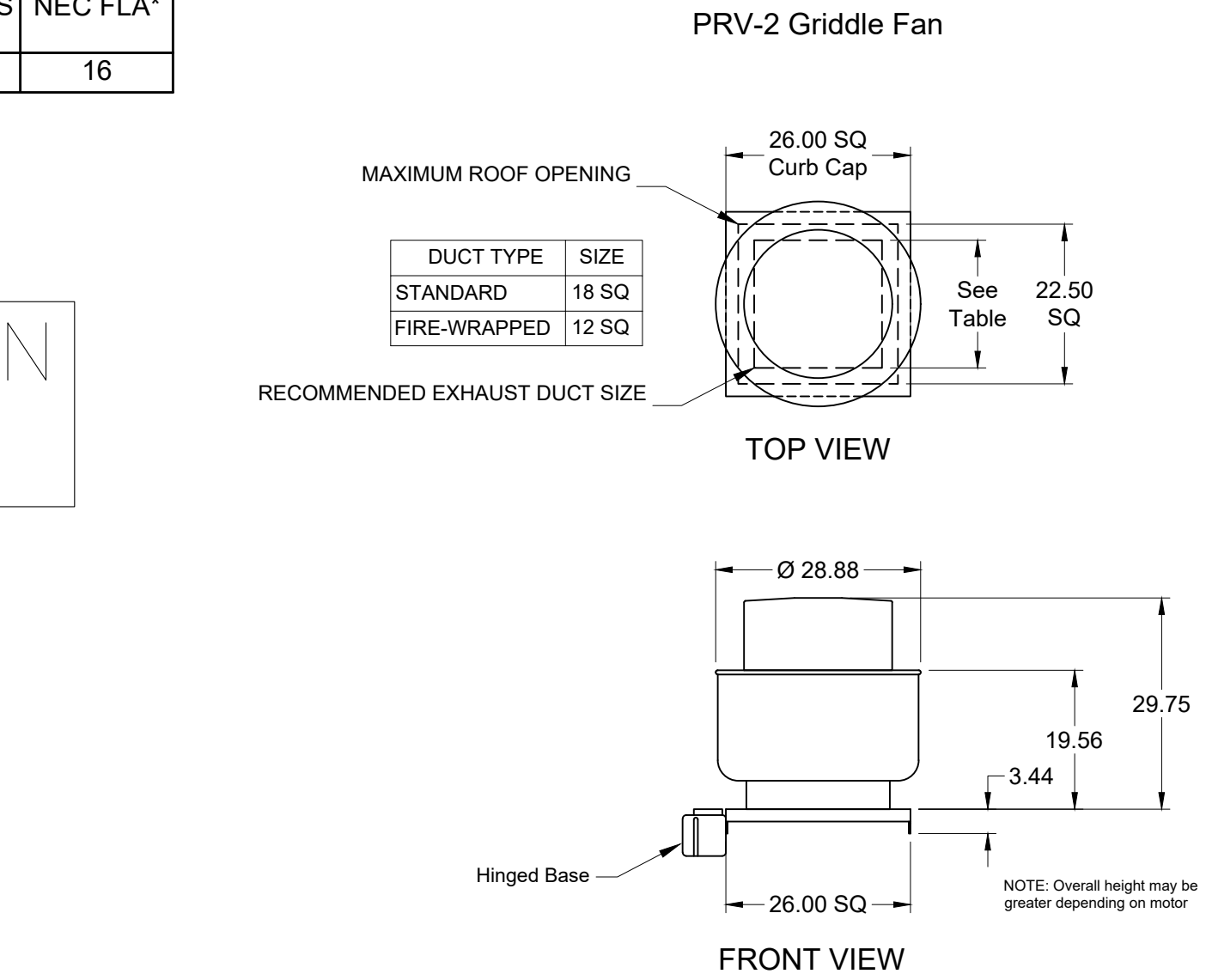
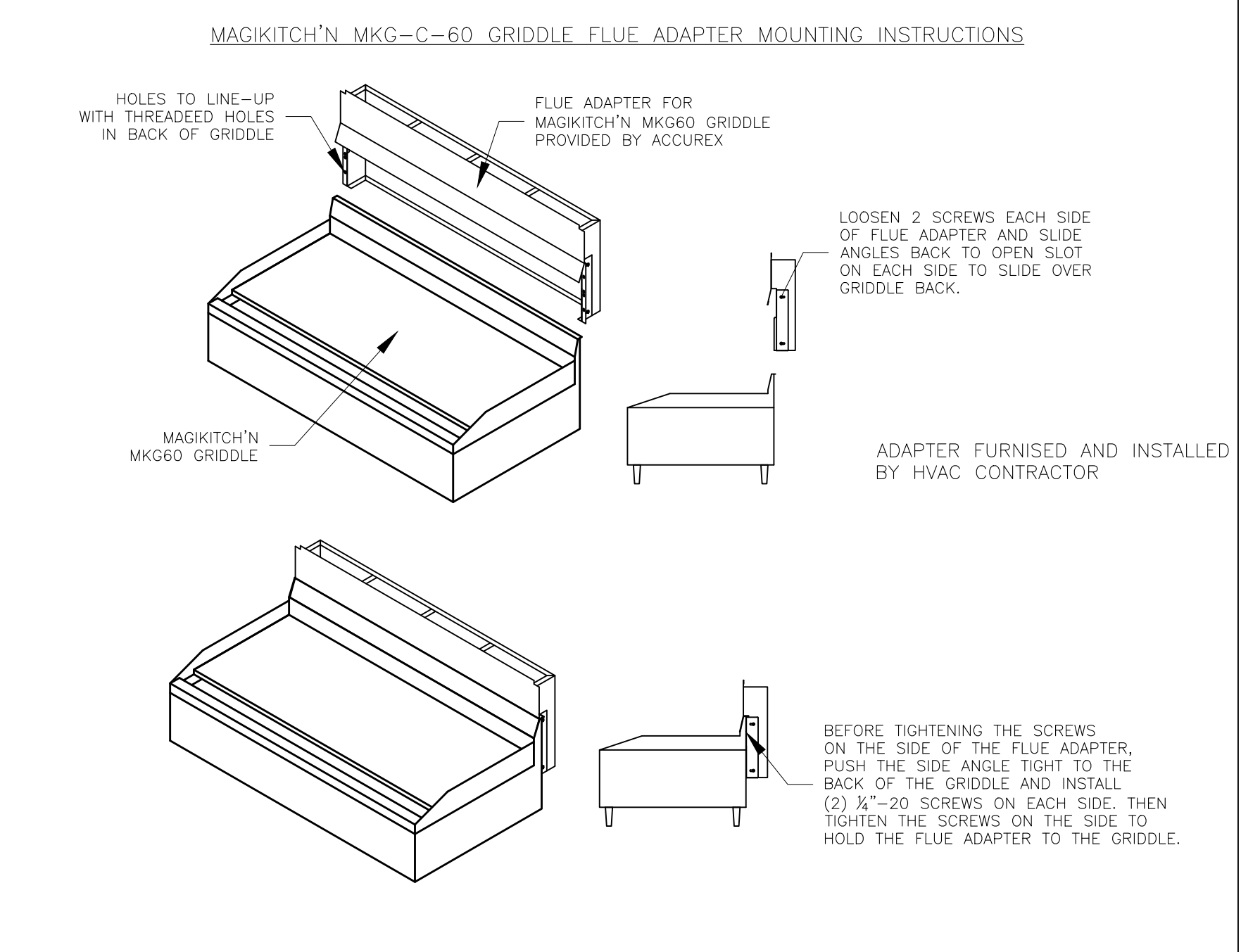
MARK: Griddle Hood SECTION VIEW

VERIFY MAGIKITCH'N OR VULCAN GRILL



60" MAGIKITCH'N GRIDDLE FLUE ADAPTER

MUST USE WITH ONE OF THE FOLLOWING: STAR/MAGIKITCH'N OR VULCAN



PRV-2 Griddle Fan TOP VIEW FRONT VIEW

ANSUL R102 (WET CHEMICAL) FIRE PROTECTION SYSTEM - MODEL FSSC

CONTROL PANEL

- STAINLESS STEEL ENCLOSURE
- AGENT STORAGE TANK
- EXPIRANT GAS CARTRIDGE
- ANSUL AUTOMAN RELEASE
- REGULATOR
- KNOCKOUT FOR WIRING MICROSWITCH

WIRING DIAGRAMS
 W/D/T MICRO SWITCH
 DOT SWITCHES PROVIDED BY MANUFACTURER MAY BE WIRED PER TYPICAL EXAMPLES SHOWN. VERIFY WITH LOCAL CODES AND EQUIPMENT SUPPLIER AS THE CONNECTION NEEDED FOR YOUR INSTALLATION.

CONNECTION TO BUILDINGS ALARM

CONNECTION TO COOKING EQUIPMENT

CONNECTION TO FAN SHUT DOWN

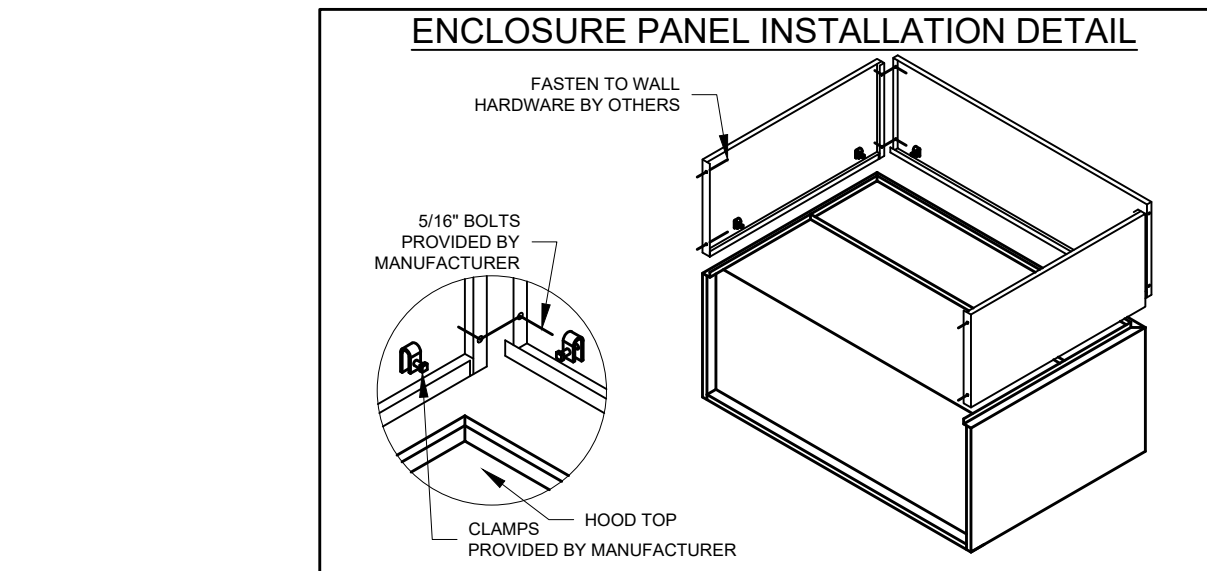
NOTES:

WET CHEMICAL FIRE PROTECTION SYSTEM TO BE ANSUL R-102, DESIGNED IN COMPLIANCE WITH UL 300 REQUIREMENTS:
 -VERIFICATION OF ALL COOKING EQUIPMENT MAKE, MODEL AND LOCATION REQUIRED FOR ALL FIRE PROTECTION SYSTEMS.
 -ALL FIRE SYSTEM PIPING IS STANDARD TO THE RIGHT END OF THE HOOD UNLESS A WALL IS LOCATED ON THE RIGHT END.
 -ANSUL AUTOMAN RELEASE TO BE LOCATED WITHIN 60" OF HOOD.

THE BASIC FIRE SYSTEM WILL INCLUDE THE FOLLOWING:
 -GAS SHUT-OFF VALVE, IF REQUIRED, TO BE SUPPLIED BY MANUFACTURER (UP TO 2" DIAMETER AS STANDARD), AND INSTALLED BY A LICENSED PLUMBER.
 -MICRO SWITCH TO BE SUPPLIED BY MANUFACTURER FOR CONNECTION TO, BUT NOT LIMITED TO, BUILDING ALARM SYSTEMS, EXHAUST AND SUPPLY FANS AND ELECTRICAL POWER SHUT DOWN. FIELD WIRING AND CONNECTIONS TO BE PERFORMED BY A LICENSED ELECTRICIAN.

THE BASIC FIRE SYSTEM DOES NOT INCLUDE THE FOLLOWING:
 -FULL DUMP TEST OTHER THAN WHAT IS SPECIFIED PER THE INSTALLATION MANUAL, OR TO SATISFY A STATE OR LOCAL CODE. PERMIT AND TESTING FEES ARE NOT INCLUDED UNLESS NOTED UNDER THE EQUIPMENT SCHEDULE FOR THE FIRE SYSTEM.
 -MORE THAN TWO TRIPS TO THE JOBSITE OR SPECIAL TRANSPORTATION, OR OVERNIGHT LOGGING REQUIREMENTS IN REMOTE AREAS. NORMAL TRAVEL DISTANCE IS FIRST 50 MI. (80.5 KM) FROM OFFICE.
 -SPECIAL CLASSES OR ADDITIONAL LABOR FOR ACCESS TO SECURITY SENSITIVE AREAS.
 -INSTALLATION OF GAS SHUT-OFF VALVE.
 -SPECIAL DRAWINGS REQUIRED TO SATISFY STATE OR LOCAL CODE. PLAN EXAMINATION FEES, PE OR FS APPROVAL STAMP.
 -UNION LABOR, GOVERNMENT LABOR, OR PREVAILING WAGES REQUIRED FOR FINAL FIELD HOOK UP.
 -ANY AND ALL ELECTRICAL COMPONENTS/CONNECTIONS REQUIRED TO SHUT DOWN FANS, SHUT OFF DEVICE FOR ELECTRIC COOKING EQUIPMENT (SHUNT TRIP BREAKER), OR ACTIVATE AN ALARM SYSTEM, ETC.
 -ANY DISMANTLING OR REASSEMBLY REQUIRED TO GAIN ACCESS TO THE FIRE SUPPRESSION PIPING LOCATED ON THE TOP OF THE HOOD.
 -ROUGH-IN HIDDEN CONDUIT FOR REMOTE PULL STATION OR GAS VALVE (FLUSH MOUNTED PULL STATION).
 -INSTALLATION OF MORE THAN (1) REMOTE PULL STATIONS OR DISTANCES GREATER THAN 20 FT (6.1M).
 -PARTS OR LABOR REQUIRED TO CORRECT PIPING DUE TO COOKING EQUIPMENT CHANGES OR DEVIATION FROM PLANS, OR ANY CHARGES FOR MISSING OR ADDITIONAL PARTS OTHER THAN THOSE INDICATED ON THE FIRE SUPPRESSION DETAIL.

NOTES:
 1. DENOTES FIELD INSTALLATION.
 2. DENOTES FACTORY PREINSTALLATION.
 3. DO NOT USE BLACK WIRE ON SNAP-ACTION SWITCH IN NORMAL INSTALLATION. BLACK WIRE TO BE USED ONLY FOR EXTRANEOUS ALARM, LIGHT CIRCUITS, ETC.



ENCLOSURE PANEL INSTALLATION DETAIL

FASTEN TO WALL HARDWARE BY OTHERS

5/16" BOLTS PROVIDED BY MANUFACTURER

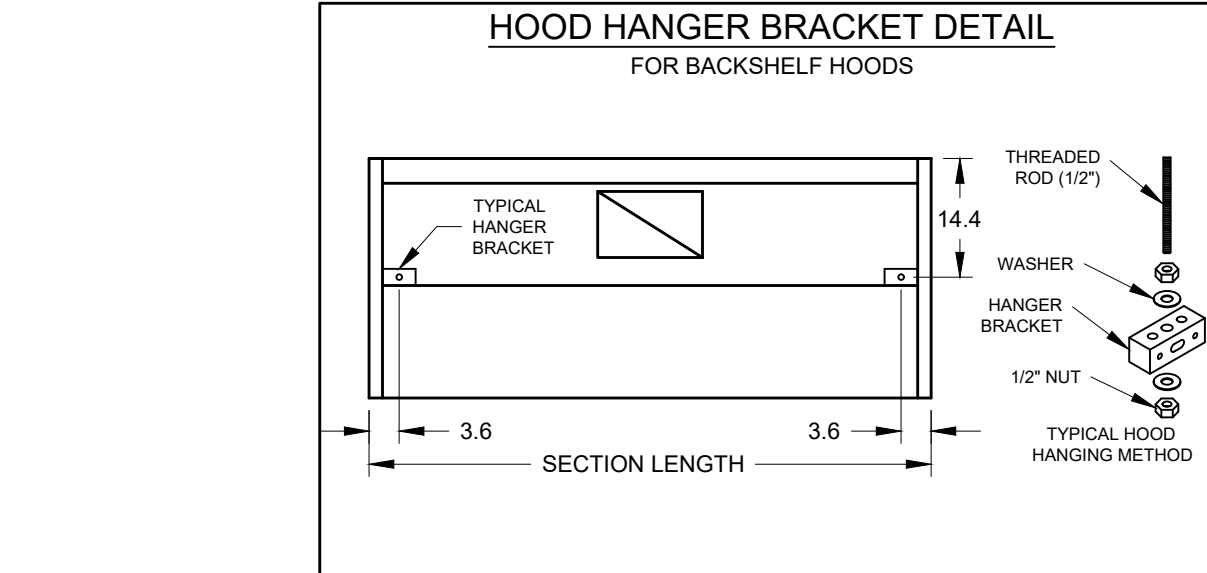
CLAMPS PROVIDED BY MANUFACTURER

HOOD HANGING HEIGHT FOR FIRE SYSTEMS

VERIFICATION OF HOOD HANGING HEIGHT ABOVE FINISHED FLOOR (A.F.F.) IS REQUIRED FOR CORRECT PLACEMENT OF FIRE SYSTEM NOZZLES.

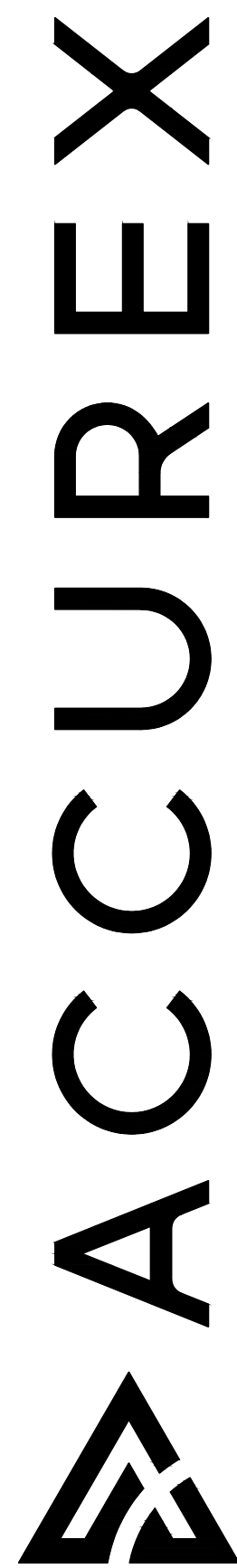
RECOMMENDED HANGING HEIGHT = 61" FROM FINISHED FLOOR TO LOWER FRONT EDGE OF HOOD.

OTHER HANGING HEIGHT = _____" FROM FINISHED FLOOR TO LOWER EDGE OF HOOD.



HOOD HANGER BRACKET DETAIL FOR BACKSHELF HOODS

PROJECT 12/4/2019
 ACCUREX - WI, IA
 PHILLIP KRAFT
 PHILLIP.KRAFT@ACCUREX.COM
 262-227-7865
 UL LISTED
 GRIDDLE HOOD
 PRV-2 GRIDDLE FAN
 FIRE SUPPRESSION-GRIDDLE HOOD
 CULVERS - STURTEVANT, WI
 REMODEL



HOOD INFORMATION																	
HOOD NO.	MARK	MODEL	HOOD DIMENSIONS (IN.)			HOOD CONSTR.	COOKING LOAD / DUTY RATING	TOTAL CFM	EXHAUST COLLAR(S)					SUPPLY		TOTAL WEIGHT LBS.	SECTION LOCATION
			LENGTH	WIDTH	HEIGHT				WIDTH	LENGTH	DIA.	CFM	S.P.	MJA CFM	AC CFM		
1	FRYER HOOD	XXEP-83-S	83	TOP 23 BOT 3	FRT 12 BACK 36	430 SS WHERE EXPOSED	MEDIUM	1500	12	12		1500	0.518			169	SINGLE

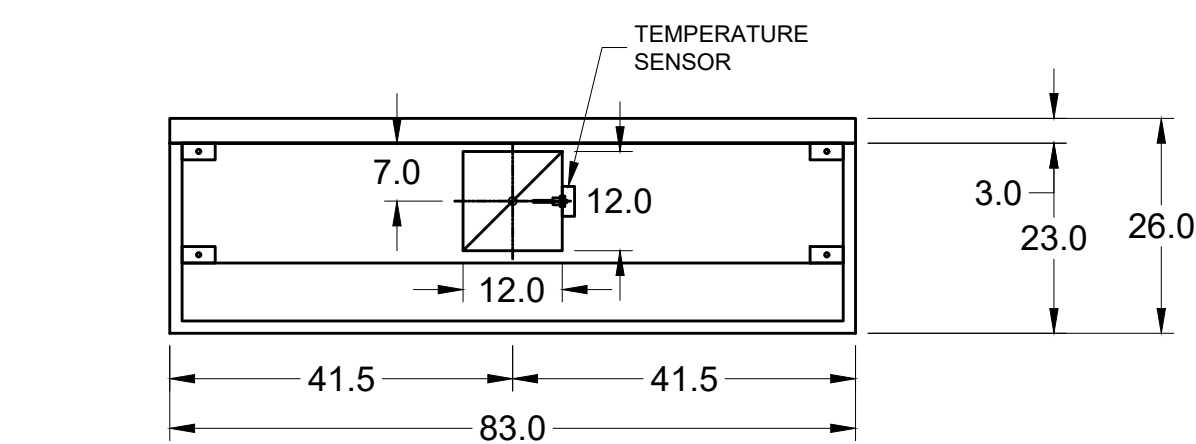
HOOD INFORMATION														
HOOD NO.	MARK	LIGHTING DETAILS			GREASE FILTRATION DETAILS			UTILITY CABINET(S)						
		FIXTURE TYPE	BULB / LAMP INFO	QTY	FOOT CANDLES	TYPE / MODEL MATERIAL	QTY	SIZE (IN.) L H	LOCATION	FIRE SYSTEM TYPE	SIZE	MODEL	CONTROLS INTERFACE	
1	FRYER HOOD					X-TRACTOR STAINLESS STEEL	5	16	16					

HOOD OPTIONS														
UL 710 LISTED W/ OUT EXHAUST FIRE DAMPER - UL #R25625										SPECIAL DESIGN REQUESTS				
BACK NON-INTEGRAL AIR SPACE - 3 IN WIDE										SDR #K1100559 - NEW PITCO 4L FRYER FLUE BYPASS SYSTEM				
26 IN HIGH CEILING ENCLOSURES - FRONT LEFT RIGHT - FIELD INSTALLED										SDR #K1700974 - CULVERS 4VAT 2FIRE PROCESS - FRYER HOOD				
FACTORY MOUNTED EXHAUST COLLAR(S)														
PERFORMANCE ENHANCING LIP (PEL) TECHNOLOGY														
STANDING SEAM CONSTRUCTION FOR SUPERIOR STRENGTH														

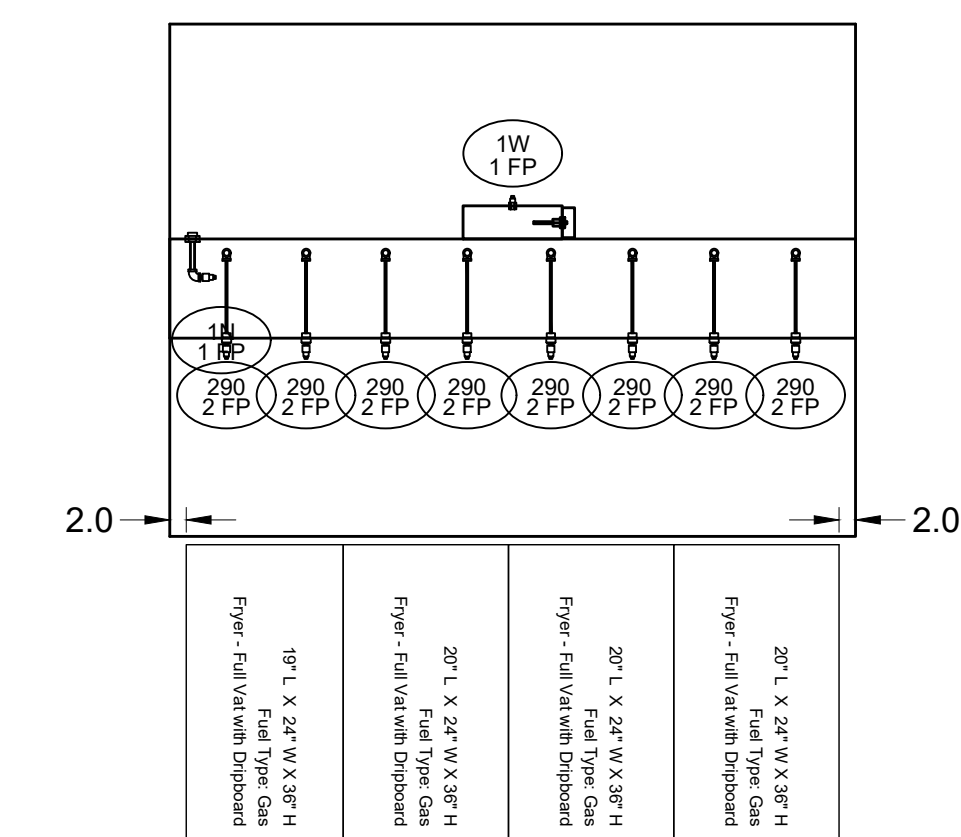
Direct Drive Upblast Centrifugal Roof Exhaust Fan														
MARK INFORMATION			FAN INFORMATION						MOTOR INFORMATION					
QTY	MARK	MODEL	VOLUME (CFM)	TOTAL EXTERNAL SP (IN WG)	FAN RPM	OPERATING POWER (HP)	WEIGHT (LB.)	SIZE (HP)	V/C/P	ENCLOSURE	MOTOR RPM	WINDINGS	NEC FLA*	
1	PRV-3 Fryer Fan	XCUE-140-VG	1,500	1	1,365	0.46	92	1	115/60/1	OP	1725	1	16	

*NEC FLA - Based on table 430.250 or 430.248 of National Electrical Code 2020. Actual motor FLA may vary for sizing thermal overload, consult factory"

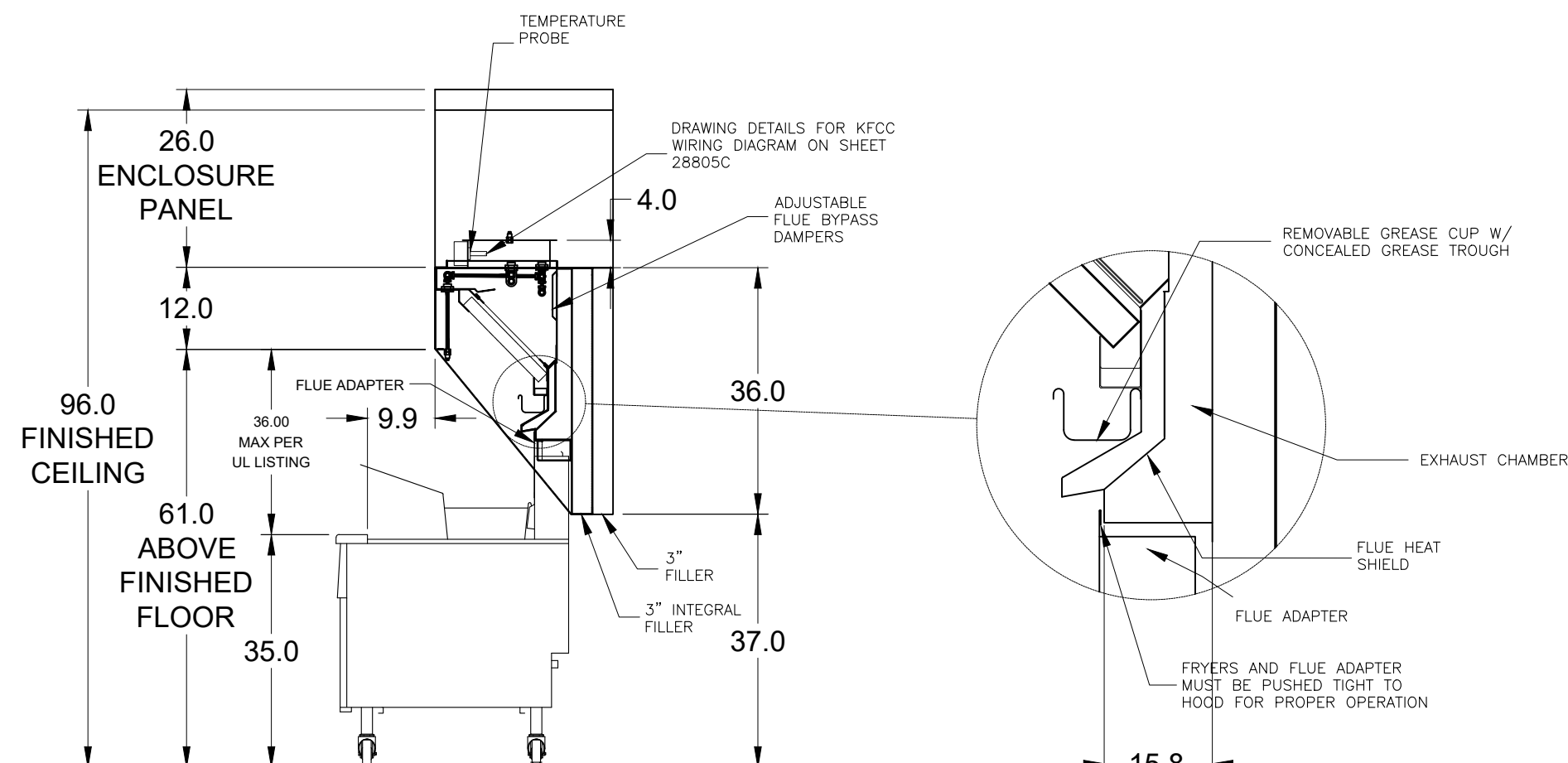
PRV-3 Fryer Fan : SELECTED OPTIONS AND ACCESSORIES														
One piece fully welded windband														
Tapered bushing wheel hub														
Breather tube outlet area min. 4.4 sq. in. (sizes 99-480), 2.0 sq. in. (sizes 60-95)														
Min. windband material thickness: 0.051" aluminum (060-240), 0.064" aluminum (240HP, 240XP), 0.080" aluminum (sizes 300-480)														
Larger Curb Cap Size - 26 Square														
UL/cUL 705 Listed - Supplement SC - "Power Ventilators for Restaurant Exh. Appliances" (Formerly UL 762)														
Switch, NEMA-3R, Toggle														
Hinge, Factory Installed														
High Temp Curb Seal Rated for Continuous Duty at 1500 F (Factory Attached)														
Grease Trap (PN 475538)														
Clean-out Port - Factory Installed														
Conduit Chase Qty 1														



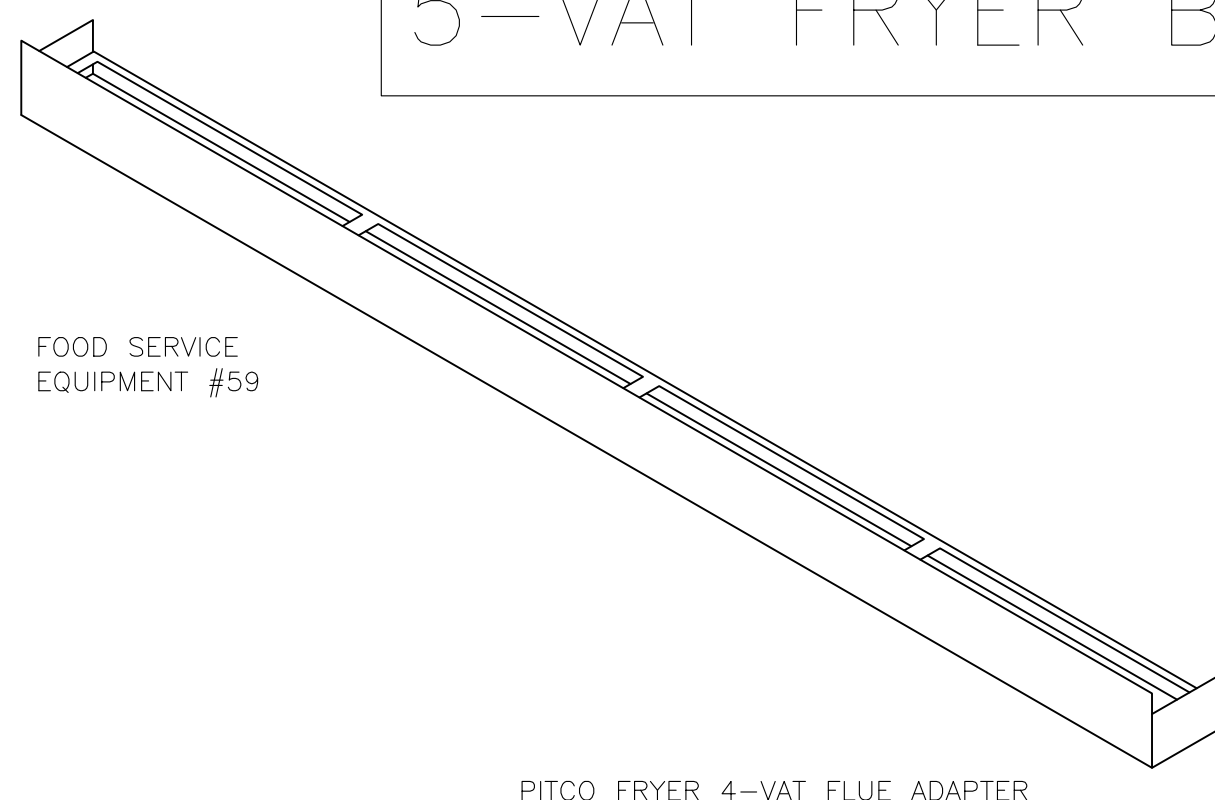
MARK: Fryer Hood - SECTION 1 PLAN VIEW



MARK: Fryer Hood - SECTION 1 ELEVATION VIEW



MARK: ITEM #59 SECTION VIEW

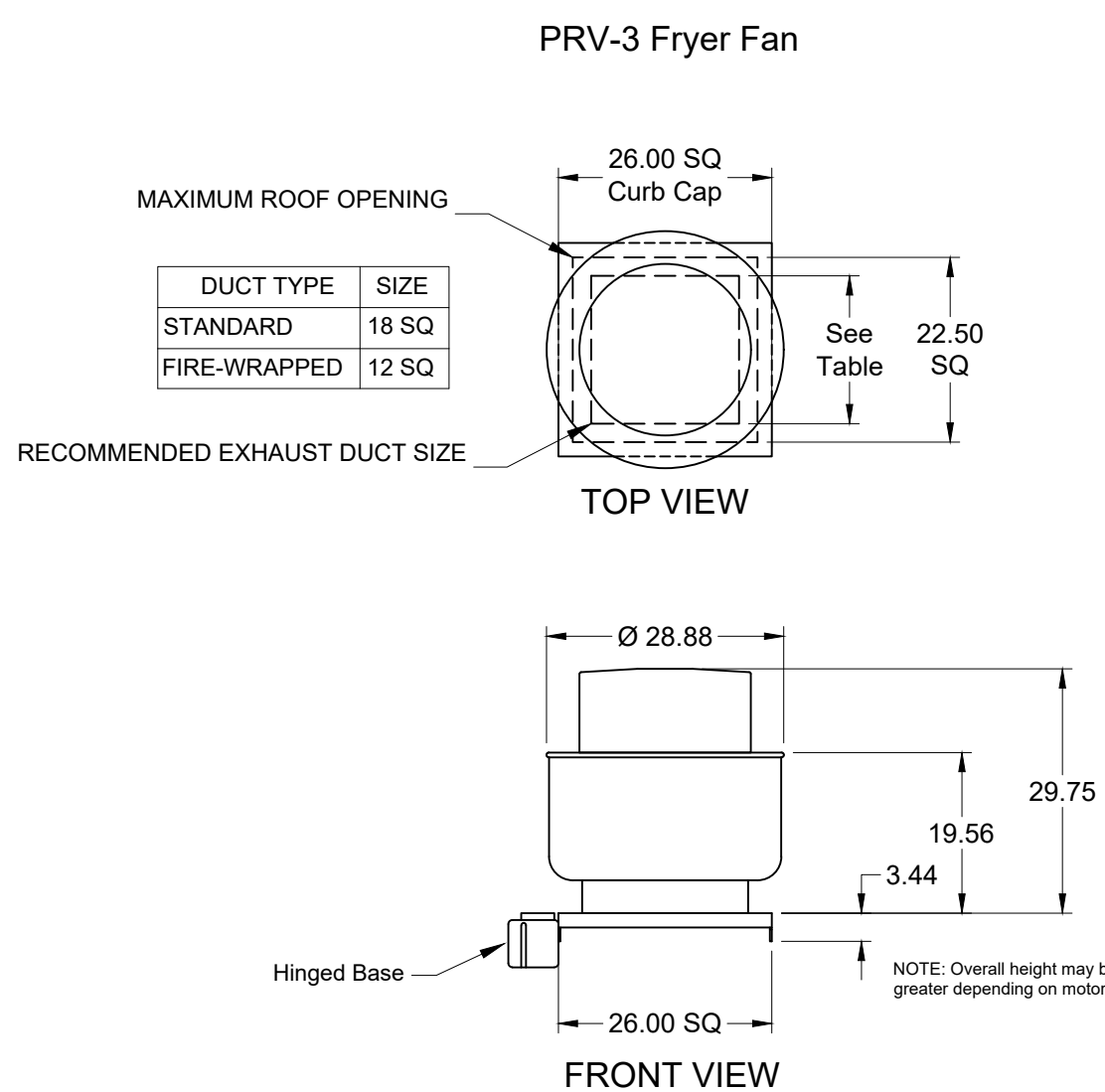


PITCO FRYER 4-VAT FLUE ADAPTER

MUST USE WITH ONE OF THE FOLLOWING: PITCO OR FRYMASTER

FIRE SYSTEM INFORMATION														
MARK	MODEL	LOCATION	FLOW POINTS		SUPPLY LINE	DETECTION	MARK(S) PROTECTED BY FIRE SYSTEM							
			HOODS	PCU										
FRYER FSS-PP	ANSUL R-102 WET CHEMICAL	LEFT END PRE-PIPE ONLY	18 UTILIZED	22 AVAILABLE	CONTINUOUS	FUSIBLE LINK	FRYER HOOD SECTION 1							

FIRE SYSTEM OPTIONS AND ACCESSORIES
 PRE-PIPE ONLY (INCLUDES PRE-PIPED HOOD(S) WITH DETECTION ONLY)
 CHROME SLEEVES FOR FACTORY PROVIDED APPLIANCES DROPS - INCLUDED
 METAL BLOW-OFF CAPS - INCLUDED



PRV-3 Fryer Fan

ANSUL R102 (WET CHEMICAL) FIRE PROTECTION SYSTEM - MODEL FSSC

CONTROL PANEL

- STAINLESS STEEL ENCLOSURE
- AGENT STORAGE TANK
- EXPELLANT GAS CARTRIDGE
- ANISUL AUTOMAN RELEASE
- REGULATOR
- KNOCKOUT FOR WIRING MICROSWITCH

WIRING DIAGRAMS
 WIRING MICRO SWITCH
 DPDT SWITCHES PROVIDED BY MANUFACTURER MAY BE WIRED PER TYPICAL EXAMPLES SHOWN. VERIFY WITH LOCAL CODES AND EQUIPMENT SUPPLIER AS THE CONNECTION NEEDED FOR YOUR INSTALLATION.

CONNECTION TO BUILDINGS ALARM

CONNECTION TO COOKING EQUIPMENT SHUT DOWN

CONNECTION TO FAN SHUT DOWN

NOTES:

WET CHEMICAL FIRE PROTECTION SYSTEM TO BE ANSUL R-102. DESIGNED IN COMPLIANCE WITH UL 300 REQUIREMENTS.
 -VERIFICATION OF ALL COOKING EQUIPMENT MAKE, MODEL AND LOCATION REQUIRED FOR ALL FIRE PROTECTION SYSTEMS.
 -ALL FIRE SYSTEM PIPING IS STANDARD TO THE RIGHT END OF THE HOOD UNLESS A WALL IS LOCATED ON THE RIGHT END.
 -ANSUL AUTOMAN RELEASE TO BE LOCATED WITHIN 60" OF HOOD.

THE BASIC FIRE SYSTEM WILL INCLUDE THE FOLLOWING:
 -GAS SHUT-OFF VALVE, IF REQUIRED, TO BE SUPPLIED BY MANUFACTURER (UP TO 2" DIAMETER AS STANDARD) AND INSTALLED BY A LICENSED PLUMBER.
 -MICRO SWITCH TO BE SUPPLIED BY MANUFACTURER FOR CONNECTION TO, BUT NOT LIMITED TO, BUILDING ALARM SYSTEM(S), EXHAUST AND SUPPLY FANS AND ELECTRICAL POWER SHUT DOWN. FIELD WIRING AND CONNECTIONS TO BE PERFORMED BY A LICENSED ELECTRICIAN.

THE BASIC FIRE SYSTEM DOES NOT INCLUDE THE FOLLOWING:
 -FULL DUMP TEST OTHER THAN WHAT IS SPECIFIED PER THE INSTALLATION MANUAL, OR TO SATISFY A STATE OR LOCAL CODE. PERMIT AND TESTING FEES ARE NOT INCLUDED UNLESS NOTED UNDER THE EQUIPMENT SCHEDULE FOR THE FIRE SYSTEM.
 -MORE THAN TWO TRIPS TO THE JOBSITE OR SPECIAL TRANSPORTATION, OR OVERNIGHT LOGGING REQUIREMENTS IN REMOTE AREAS. NORMAL TRAVEL DISTANCE IS FIRST 50 MI. (80.5 KM) FROM OFFICE.
 -SPECIAL CLASSES OR ADDITIONAL LABOR FOR ACCESS TO SECURITY SENSITIVE AREAS.
 -INSTALLATION OF GAS SHUT-OFF VALVE.
 -SPECIAL DRAWINGS REQUIRED TO SATISFY STATE OR LOCAL CODE. PLAN EXAMINATION FEES, PE OR FS APPROVAL STAMP.
 -UNION LABOR, GOVERNMENT LABOR, OR PREVAILING WAGES REQUIRED FOR FINAL FIELD HOOK-UP.
 -ANY AND ALL ELECTRICAL COMPONENTS/CONNECTIONS REQUIRED TO SHUT DOWN FANS, SHUT OFF DEVICE FOR ELECTRIC COOKING EQUIPMENT (SHUNT TRIP BREAKER), OR ACTIVATE AN ALARM SYSTEM, ETC.
 -ANY DISMANTLING OR REASSEMBLY REQUIRED TO GAIN ACCESS TO THE FIRE SUPPRESSION PIPING LOCATED ON THE TOP OF THE HOOD.
 -ROUGH-IN HIDDEN CONDUIT FOR REMOTE PULL STATION OR GAS VALVE (FLUSH MOUNTED PULL STATION).
 -INSTALLATION OF MORE THAN (1) REMOTE PULL STATIONS OR DISTANCES GREATER THAN 20 FT (6.1M).
 -PARTS OR LABOR REQUIRED TO CORRECT PIPING DUE TO COOKING EQUIPMENT CHANGES OR DEVIATION FROM PLANS. OR ANY CHARGES FOR MISSING OR ADDITIONAL PARTS OTHER THAN THOSE INDICATED ON THE FIRE SUPPRESSION DETAIL.

NOTES:
 1. _____ DENOTES FIELD INSTALLATION.
 2. _____ DENOTES FACTORY INSTALLATION.
 3. DO NOT USE BLACK WIRE ON SNAP-ACTION SWITCH IN NORMAL INSTALLATION. BLACK WIRE TO BE USED ONLY FOR EXTRANEOUS ALARM, LIGHT CIRCUITS, ETC.

